

VICINITY MAP
NOT TO SCALE

NOTES:

1) BEARINGS AND COORDINATES SHOWN HEREON ARE BASED ON THE NORTH AMERICAN DATUM OF 1983, TEXAS COORDINATE SYSTEM, NORTH CENTRAL ZONE (4202).

2) 1,000-FOOT CONTOUR ELEVATION OF POSSUM KINGDOM LAKE IS DETERMINED BASED ON MEASUREMENTS FROM THE TOP OF THE EXISTING SPILLWAY CREST GATES AT THE MORRIS SHEPPARD DAM BEING AT ELEVATION 1,000- FEET ABOVE MEAN SEA LEVEL AS NOTED IN FEDERAL POWER COMMISSION REPORT PROJECT NO. 1490 - TEXAS ON JUNE 2, 1938.

3) SET = 5/8" IRON ROD W/CAP STAMPED "AECOM" SET; D.R.P.P.C.T.= DEED RECORDS, PALO PINTO COUNTY, TEXAS; P.R.P.P.C.T.= PLAT RECORDS, PALO PINTO COUNTY, TEXAS; F.E.R.C.= FEDERAL ENERGY REGULATORY COMMISSION; J.R.P.P.C.T.= JUDGEMENT RECORDS, PALO PINTO COUNTY, TEXAS. LFS = 5/8" IRON ROD W/CAP STAMPED "LINKFIELD RPLS 5087" FOUND.

4) METES AND BOUNDS DESCRIPTIONS TO ACCOMPANY THIS SURVEY.

5) LOCATION, POSITION AND GEOMETRY OF ROAD RIGHTS-OF-WAY SHOWN AND DESCRIBED HEREON BASED ON SURVEYS PROVIDED BY LINK FIELD SERVICES, NO DEED OF RECORD HAS BEEN RECORDED AT THIS TIME FOR SAME UNLESS NOTED OTHERWISE.

6) IMPROVEMENTS SHOWN HEREON TIED FEBRUARY 2010.

SURVEYORS CERTIFICATE

TO: BRAZOS RIVER AUTHORITY, PATTERSON PK LAND PARTNERSHIP, LTD., AND HERITAGE TITLE COMPANY OF AUSTIN, INC.

I, MUNIR ODHWANI, A REGISTERED PROFESSIONAL LAND SURVEYOR IN THE STATE OF TEXAS, REGISTRATION NUMBER 5996, HEREBY STATE THAT A SURVEY OF THE REAL PROPERTY DESCRIBED IN SEPARATE LEGAL DESCRIPTION AS NOTED HEREON, WAS ACTUALLY MADE UPON THE GROUND UNDER MY DIRECTION AND SUPERVISION, AND THAT TO THE BEST OF MY PROFESSIONAL KNOWLEDGE AND BELIEF, THE INFORMATION SHOWN HEREON IS CORRECT AS DETERMINED BY SAID SURVEY.

THIS SURVEY SUBSTANTIALLY COMPLIES WITH THE CURRENT TEXAS SOCIETY OF PROFESSIONAL SURVEYORS STANDARDS AND SPECIFICATIONS FOR A CATEGORY 1B, CONDITION II SURVEY.

Munir Odhwani

MUNIR ODHWANI
REGISTERED PROFESSIONAL LAND SURVEYOR
TEXAS REGISTRATION NO. 5996

DATE: MAY 21, 2010



CURVE TABLE					
CURVE	LENGTH	DELTA	RADIUS	CHORD BEARING	CHORD
C1	148.54	43°38'36"	195.00	S30°37'22"E	144.97'

ACREAGE TABLE		
LEASE BLOCK:	8.6607 ACRES	
F.E.R.C. BUFFER AREA:	1.6244 ACRES	
SURVEY BLOCK:	10.2851 ACRES TOTAL	

LINE TABLE		
LINE	BEARING	DISTANCE
L1	N50°50'24"W	5.94'
L2	N53°35'57"W	33.98'
L3	N48°41'49"W	34.06'
L4	N61°14'43"W	40.81'
L5	N61°08'28"W	35.42'
L6	N60°47'43"W	37.32'
L7	N74°11'50"W	40.07'
L8	N76°52'51"W	32.19'
L9	N87°08'45"W	52.76'
L10	S35°08'34"W	38.37'
L11	N56°25'31"W	4.33'
L12	N42°25'24"W	36.81'
L13	N61°38'53"W	32.47'
L14	N07°49'15"E	28.33'
L15	N00°26'15"W	37.64'
L16	N04°00'15"W	38.80'
L17	N27°43'15"W	19.22'
L18	N55°11'18"E	20.18'
L19	N32°38'07"E	28.38'
L20	N27°24'33"E	22.60'
L21	N77°51'40"E	16.41'
L22	N35°26'39"E	34.62'
L23	N21°14'23"W	22.36'
L24	N27°22'43"E	30.09'
L25	N33°20'00"E	27.25'
L26	N89°10'50"E	12.57'
L27	N17°26'01"E	51.93'
L28	N11°55'32"E	41.52'
L29	N39°56'00"W	36.34'
L30	N15°33'31"W	14.12'
L31	N38°02'02"W	21.11'
L32	N19°37'52"E	23.68'
L33	N45°44'57"E	34.55'
L34	N47°00'39"E	27.87'
L35	N38°50'10"E	41.83'
L36	N25°30'32"E	51.91'
L37	N27°30'42"E	51.87'
L38	N15°10'12"E	40.85'
L39	S55°00'00"E	14.44'
L40	S55°19'21"E	36.03'
L41	S82°03'18"E	50.36'
L42	N87°13'35"E	33.01'
L43	S61°17'30"E	26.26'

LINE TABLE		
LINE	BEARING	DISTANCE
L44	S62°29'29"E	54.96'
L45	N15°58'40"E	71.94'
L46	N30°59'55"E	28.26'
L47	N18°43'43"E	42.02'
L48	N15°21'43"E	47.77'
L49	N16°58'06"E	43.59'
L50	N41°53'18"W	24.27'
L51	N27°01'15"E	26.27'
L52	N24°01'02"E	10.73'
L53	S68°32'55"E	23.16'
L54	S42°15'27"E	16.69'
L55	S36°46'28"E	14.77'
L56	S30°39'49"E	24.58'
L57	S10°14'18"E	20.32'
L58	S00°33'28"W	26.11'
L59	S18°16'41"W	33.11'
L60	S15°00'28"W	36.85'
L61	S16°53'26"W	34.99'
L62	S15°30'24"W	44.43'
L63	S08°52'56"E	40.94'
L64	S15°13'07"E	39.59'
L65	S36°25'14"E	29.61'
L66	S09°37'42"E	30.07'
L67	S87°05'56"E	55.60'
L68	S38°45'36"E	29.40'
L69	S51°29'39"E	18.19'
L70	S07°32'17"W	20.33'
L71	S30°16'30"W	44.07'
L72	S20°32'32"W	28.21'
L73	S03°51'39"E	29.32'
L74	S34°12'18"E	37.55'
L75	S48°32'26"E	31.54'
L76	S51°49'11"E	37.62'
L77	S67°21'48"E	31.91'
L78	S62°35'41"E	40.01'
L79	N72°27'07"E	23.87'
L80	S48°09'43"E	35.53'
L81	S13°04'11"E	42.38'
L82	N46°05'06"W	11.57'
L83	N50°50'24"W	27.31'
L84	N53°35'57"W	34.45'
L85	N48°41'49"W	32.38'
L86	N61°14'43"W	38.09'

LINE TABLE		
LINE	BEARING	DISTANCE
L87	N61°08'28"W	35.52'
L88	N60°47'43"W	34.46'
L89	N74°11'50"W	36.55'
L90	N76°52'51"W	29.36'
L91	N87°08'45"W	36.74'
L92	S35°08'34"W	27.38'
L93	S45°17'29"W	15.83'
L94	S82°48'22"W	9.23'
L95	N56°25'31"W	22.11'
L96	N42°25'24"W	35.64'
L97	N61°38'53"W	32.37'
L98	N72°34'18"W	20.01'
L99	S83°43'40"W	32.36'
L100	S82°33'37"W	33.92'
L101	N44°37'01"W	16.27'
L102	N60°24'49"E	11.20'
L103	N84°00'53"E	23.35'
L104	N84°52'53"E	35.30'
L105	N70°46'30"E	20.65'
L106	N07°49'15"E	22.36'
L107	N00°26'15"W	35.06'
L108	N04°00'15"W	32.77'
L109	N27°43'15"W	23.01'
L110	N70°47'48"W	16.82'
L111	N85°47'14"W	29.13'
L112	N56°04'17"W	19.30'
L113	N61°50'44"E	22.61'
L114	S80°24'12"E	23.59'
L115	N88°34'19"E	32.45'
L116	N55°11'18"E	11.99'
L117	N32°38'07"E	22.26'
L118	N27°24'33"E	33.23'
L119	N77°51'40"E	18.49'
L120	N35°26'39"E	11.43'
L121	N21°14'23"W	20.17'
L122	N27°22'43"E	42.68'
L123	N33°20'00"E	41.80'
L124	N89°10'50"E	7.74'
L125	N17°26'01"E	32.64'
L126	N11°55'32"E	28.17'
L127	N39°56'00"W	29.59'
L128	N15°33'31"W	14.56'
L129	N38°02'02"W	29.90'

LINE TABLE		
LINE	BEARING	DISTANCE
L130	N19°37'52"E	43.24'
L131	N45°44'57"E	40.63'
L132	N47°00'39"E	26.36'
L133	N38°50'10"E	37.13'
L134	N25°30'32"E	49.42'
L135	N27°30'42"E	49.61'
L136	N15°10'12"E	29.75'
L137	N36°38'15"W	23.42'
L138	N41°50'01"W	50.20'
L139	N37°20'37"E	17.06'
L140	S79°01'14"E	18.22'
L141	S52°41'45"E	47.16'
L142	S55°00'00"E	41.69'
L143	S55°19'21"E	30.02'
L144	S82°03'18"E	42.08'
L145	N87°13'35"E	37.71'
L146	S61°17'30"E	33.04'
L147	S62°29'29"E	24.08'
L148	N15°58'40"E	44.62'
L149	N30°59'55"E	28.86'
L150	N18°43'43"E	38.60'
L151	N15°21'43"E	47.38'
L152	N16°58'06"E	29.84'
L153	N41°53'18"W	27.32'
L154	N27°01'15"E	42.75'
L155	N23°55'46"E	14.35'
L156	N43°39'31"E	21.19'
L157	S68°32'55"E	45.80'
L158	S42°15'27"E	23.72'
L159	S36°46'28"E	17.30'
L160	S30°39'49"E	30.42'
L161	S10°14'18"E	27.19'
L162	S00°33'28"W	32.37'
L163	S18°16'41"W	36.30'
L164	S15°00'28"W	36.55'
L165	S16°53'26"W	35.10'
L166	S15°30'24"W	38.72'
L167	S08°52'56"E	34.16'
L168	S15°13'07"E	33.53'
L169	S36°25'14"E	30.88'
L170	S09°37'42"E	15.97'
L171	S87°05'56"E	46.76'
L172	S38°45'36"E	37.83'

LINE TABLE		
LINE	BEARING	DISTANCE
L173	S51°29'39"E	29.56'
L174	S07°32'17"W	39.51'
L175	S30°16'30"W	46.97'
L176	S20°32'32"W	20.68'
L177	S03°51'39"E	17.13'
L178	S34°12'18"E	27.62'
L179	S48°32'26"E	27.68'
L180	S51°49'11"E	33.49'
L181	S67°21'48"E	29.54'
L182	S62°35'41"E	30.70'
L183	N72°27'07"E	27.78'
L184	S48°09'43"E	40.94'
L185	S22°21'12"W	26.52'

STANDARD LAND SURVEY
OF

10.2851 ACRES

SITUATED IN TRACT 38-1-50
AREA 10-B, LOTS 7-12

POSSUM KINGDOM LAKE

JOHN F. SMITH SURVEY, ABSTRACT 410
PALO PINTO COUNTY, TEXAS

AECOM

AECOM USA GROUP, INC.
1200 SUMMIT AVENUE, SUITE 600
FORT WORTH, TEXAS 76102
WWW.AECOM.COM
817.698.6770

REVISED: 05/21/10

SHEET 1 OF 7

Date: 12/21/09

Project No. 60102581

60052528
R206By.dwg

SHEET 6

LOT 9

LEASE BLOCK R206
AREA: 10-B

LOT 10

SHEET 3

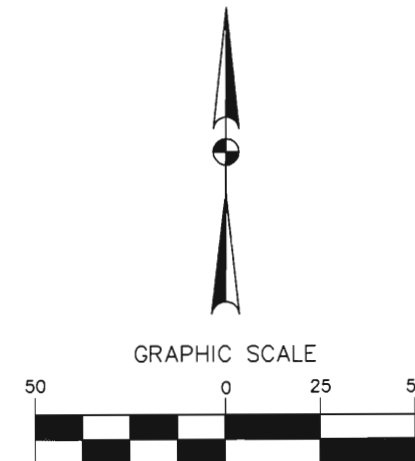
LOT 7-A

LOT 11

JOHN F. SMITH SURVEY
ABSTRACT 410

POSSUM KINGDOM LAKE

THE BRAZOS RIVER CONSERVATION AND
RECLAMATION DISTRICT
TRACT 38-1-50
VOLUME 184, PAGE 150
D.R.P.P.C.T.



(IN FEET)
1 inch = 50 ft.

8.6607 ACRES
377,258 SQ. FT.

F.E.R.C. BUFFER AREA
1.6244 ACRES
70,757 SQ. FT.

F.E.R.C.
POINT OF
BEGINNING

STANDARD LAND SURVEY
OF

10.2851 ACRES

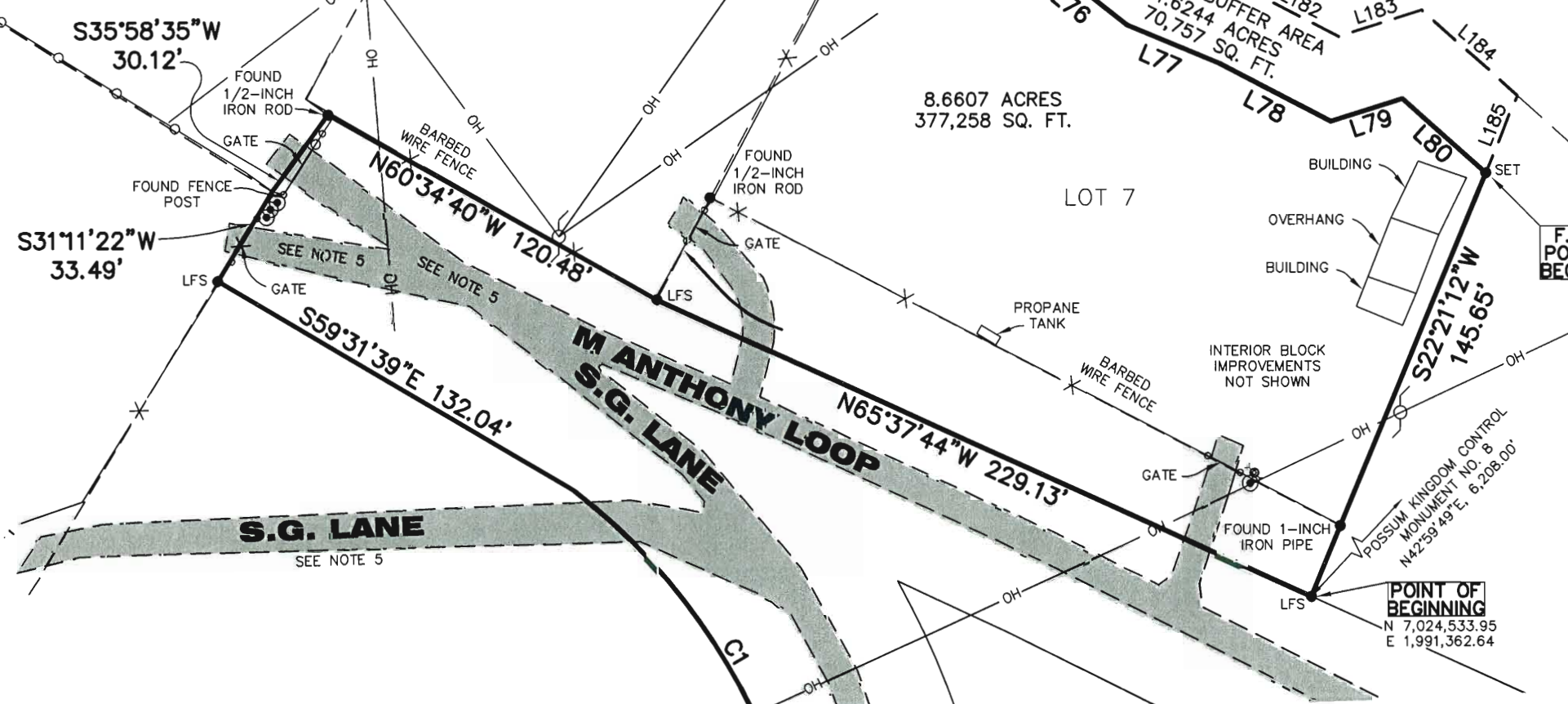
SITUATED IN TRACT 38-1-50

AREA 10-B, LOTS 7-12

POSSUM KINGDOM LAKE

JOHN F. SMITH SURVEY, ABSTRACT 410

PALO PINTO COUNTY, TEXAS



POINT OF
BEGINNING
N 7,024,533.95
E 1,991,362.64

AECOM

AECOM USA GROUP, INC.
1200 SUMMIT AVENUE, SUITE 600
FORT WORTH, TEXAS 76102
WWW.AECOM.COM
817.698.6770

REVISED: 05/21/10 SHEET 2 OF 7

Date: 12/10/09 Project No. 60102581 60052528 R206By.dwg

NO PART OR PARTS OF THIS DRAWING MAY BE REPRODUCED OR TRANSMITTED IN ANY WAY OR FORM (ELECTRONIC, MECHANICAL, PHOTOCOPYING, OR OTHERWISE) WITHOUT THE EXPRESS WRITTEN PERMISSION OF AECOM.

J:\60052528 Possum Kingdom Lake\102.01 Assimilation of Data\Group 2\R205\60052528 R206By.dwg 12/10/2009 1:03:51 PM CST

SHEET 6

LOT 9

LEASE BLOCK R206
AREA: 10-B

LOT 10

LOT 7-A

LOT 11

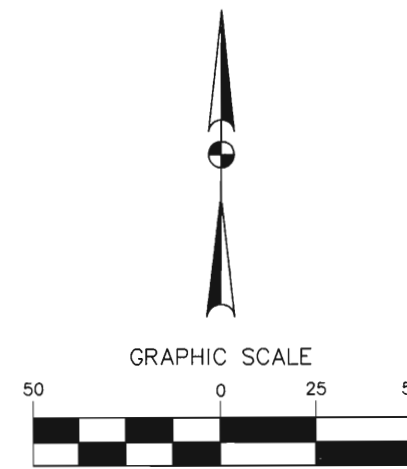
8.6607 ACRES
377,258 SQ. FT.

LEASE BLOCK R206
AREA: 10-B

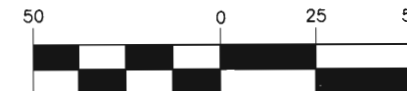
JOHN F. SMITH SURVEY
ABSTRACT 410

LOT 12

SHEET 4



GRAPHIC SCALE

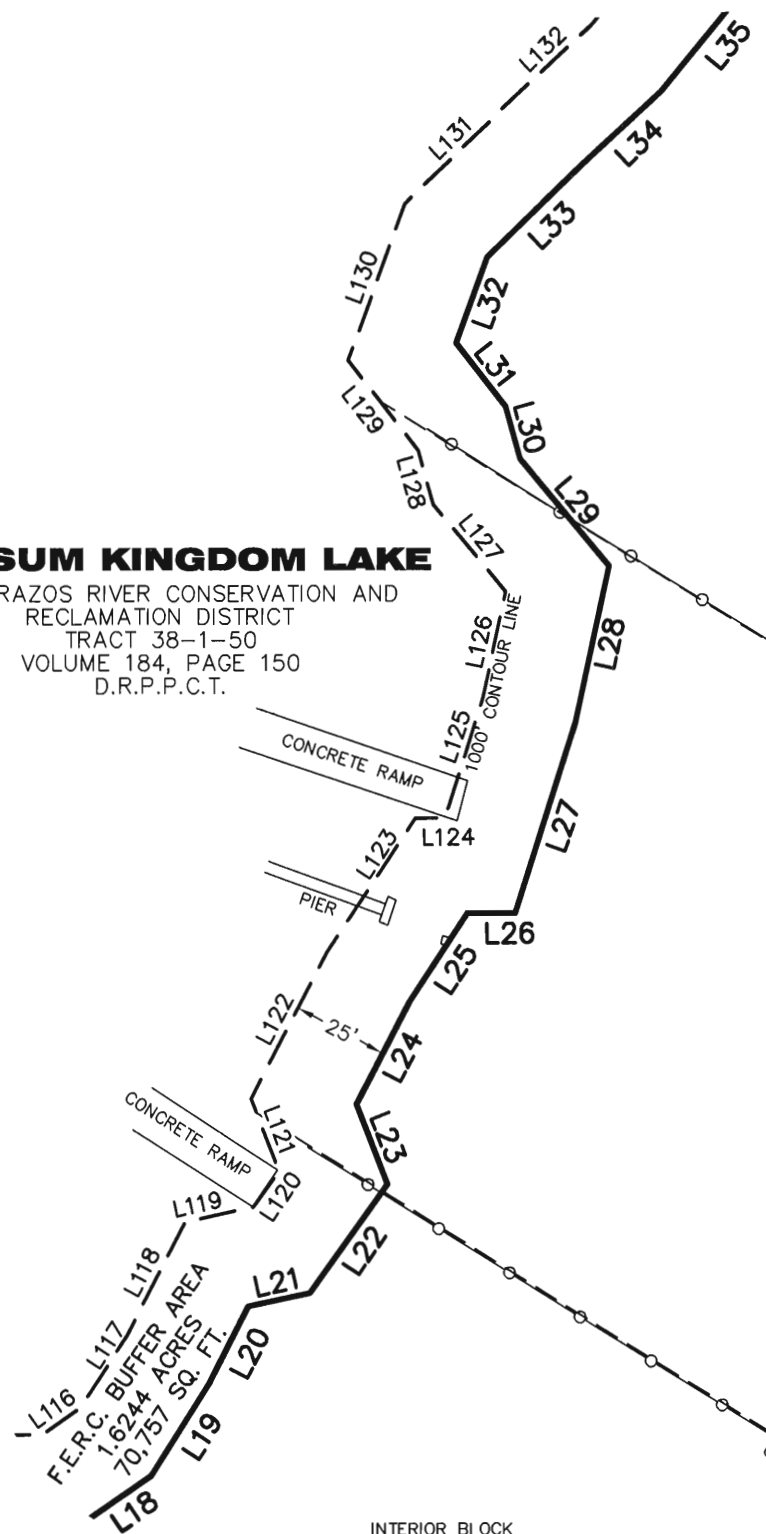


(IN FEET)

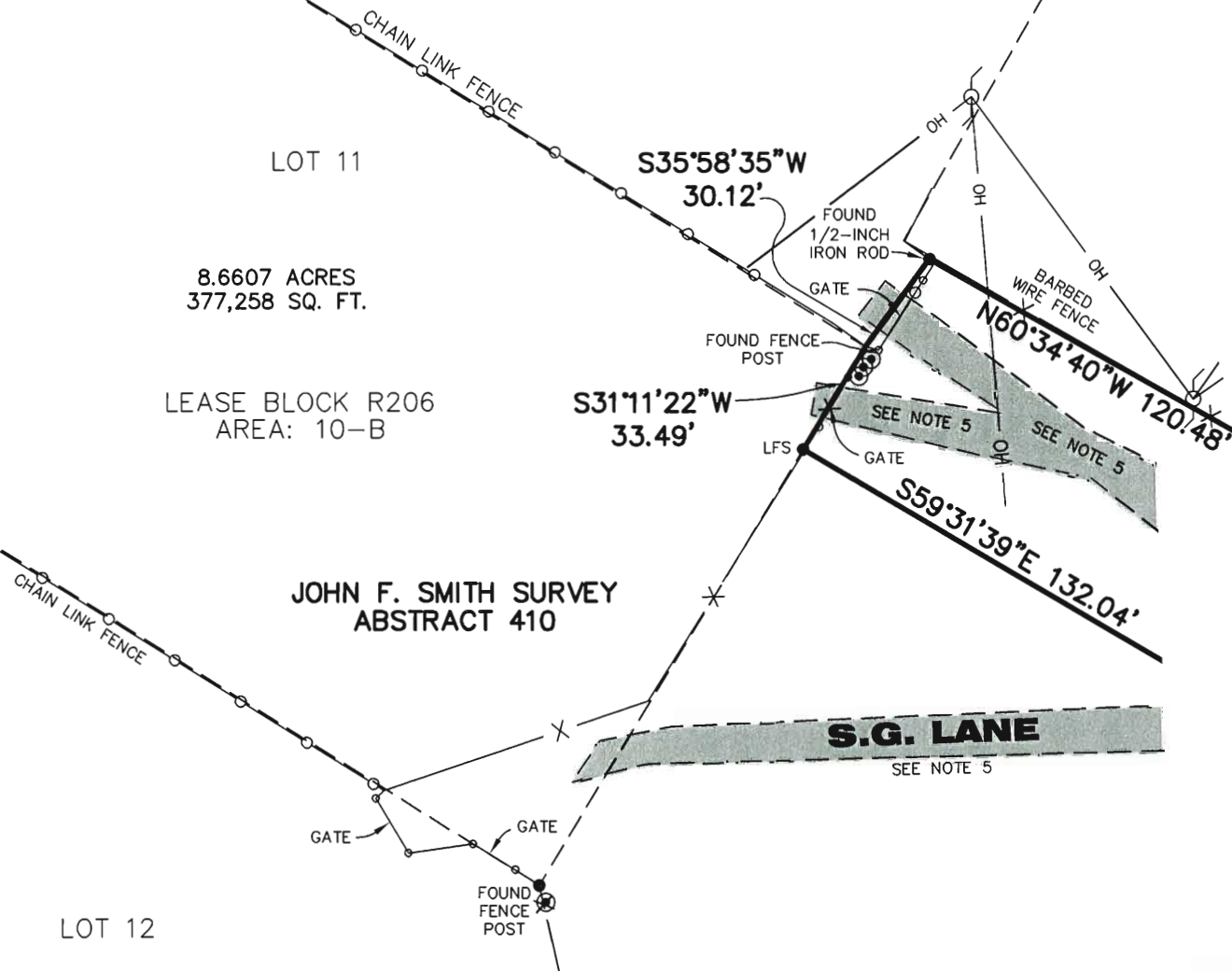
1 inch = 50 ft.

POSSUM KINGDOM LAKE

THE BRAZOS RIVER CONSERVATION AND
RECLAMATION DISTRICT
TRACT 38-1-50
VOLUME 184, PAGE 150
D.R.P.P.C.T.



INTERIOR BLOCK
IMPROVEMENTS
NOT SHOWN



SHEET 2

STANDARD LAND SURVEY
OF
10.2851 ACRES
SITUATED IN TRACT 38-1-50
AREA 10-B, LOTS 7-12
POSSUM KINGDOM LAKE
JOHN F. SMITH SURVEY, ABSTRACT 410
PALO PINTO COUNTY, TEXAS

AECOM

AECOM USA GROUP, INC.
1200 SUMMIT AVENUE, SUITE 600
FORT WORTH, TEXAS 76102
WWW.AECOM.COM
817.698.6770

REVISED: 05/21/10

SHEET 3 OF 7

Date: 12/07/09

Project No. 60102581

60052528
R206By.dwg

8.6607 ACRES
377,258 SQ. FT.

LEASE BLOCK R206
AREA: 10-B

JOHN F. SMITH SURVEY
ABSTRACT 410

INTERIOR BLOCK
IMPROVEMENTS
NOT SHOWN

LOT 12

THE BRAZOS RIVER
CONSERVATION AND
RECLAMATION DISTRICT
TRACT 38-1-50
VOLUME 184, PAGE 150
D.R.P.P.C.T.

POSSUM KINGDOM LAKE

THE BRAZOS RIVER CONSERVATION AND
RECLAMATION DISTRICT
TRACT 38-1-50
VOLUME 184, PAGE 150
D.R.P.P.C.T.

F.E.R.C. BUFFER AREA
1.6244 ACRES
70,757 SQ. FT.

STANDARD LAND SURVEY
OF

10.2851 ACRES
SITUATED IN TRACT 38-1-50
AREA 10-B, LOTS 7-12
POSSUM KINGDOM LAKE
JOHN F. SMITH SURVEY, ABSTRACT 410
PALO PINTO COUNTY, TEXAS

AECOM

AECOM USA GROUP, INC.
1200 SUMMIT AVENUE, SUITE 600
FORT WORTH, TEXAS 76102
WWW.AECOM.COM
817.698.6770

REVISED: 05/21/10

SHEET 4 OF 7

Date: 12/07/09

Project No. 60102581

60052528
R206By.dwg

LOT 11

8.6607 ACRES
377,258 SQ. FT.

LEASE BLOCK R206
AREA: 10-B

JOHN F. SMITH SURVEY
ABSTRACT 410

LOT 12

S.G. LANE

SEE NOTE 5

THE BRAZOS RIVER
CONSERVATION AND
RECLAMATION DISTRICT
TRACT 38-1-50
VOLUME 184, PAGE 150
D.R.P.P.C.T.

SHEET 4

STANDARD LAND SURVEY
OF

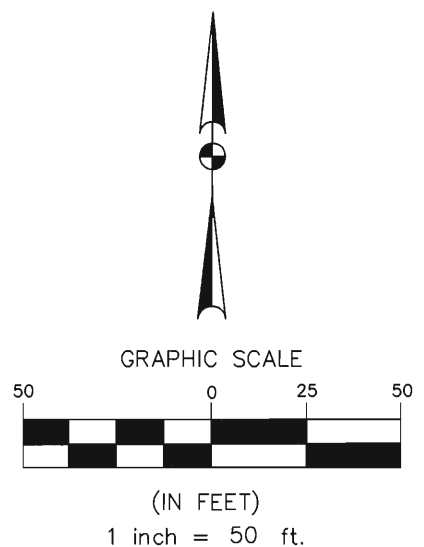
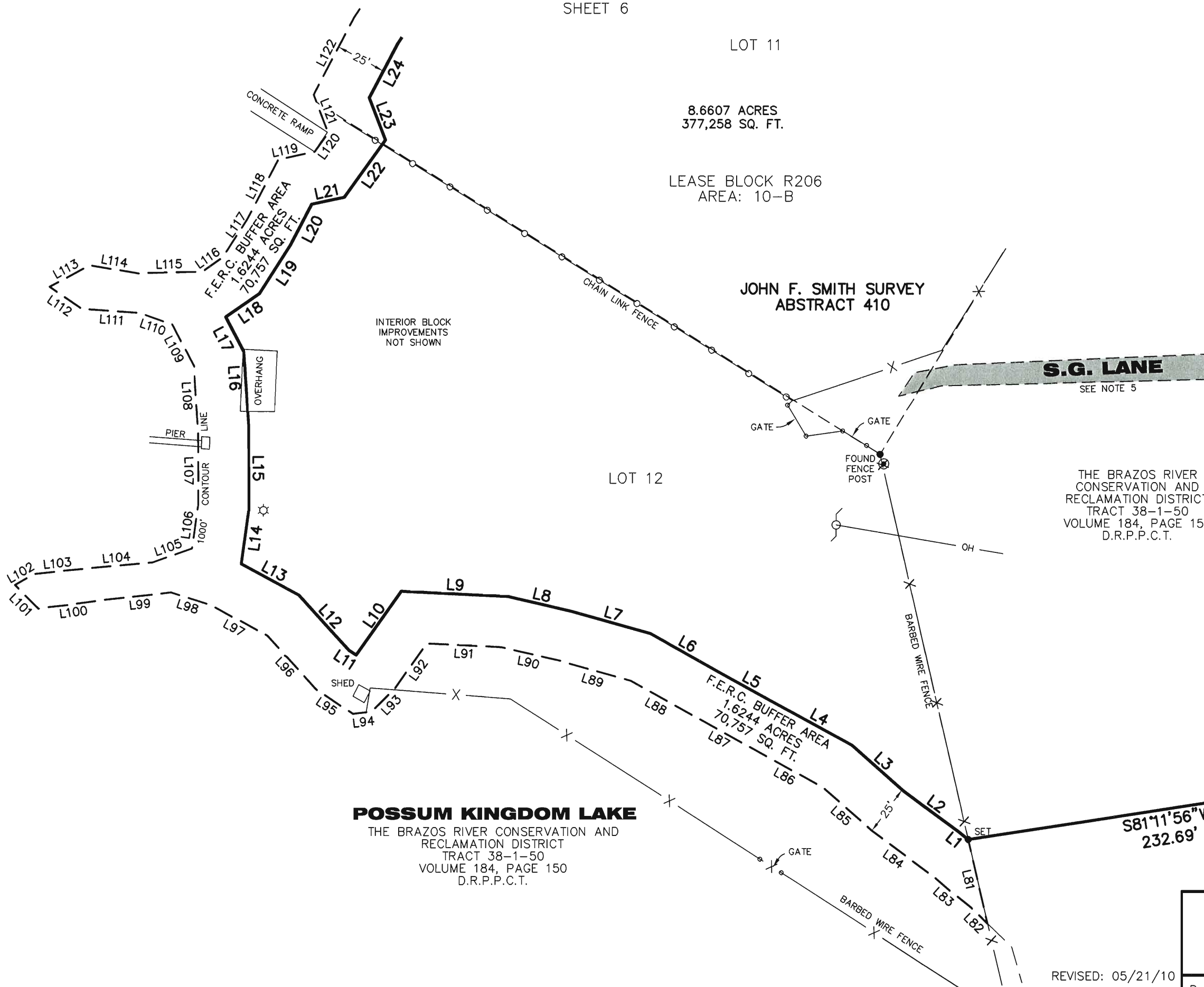
10.2851 ACRES

SITUATED IN TRACT 38-1-50
AREA 10-B, LOTS 7-12

POSSUM KINGDOM LAKE
JOHN F. SMITH SURVEY, ABSTRACT 410
PALO PINTO COUNTY, TEXAS

POSSUM KINGDOM LAKE

THE BRAZOS RIVER CONSERVATION AND
RECLAMATION DISTRICT
TRACT 38-1-50
VOLUME 184, PAGE 150
D.R.P.P.C.T.



REVISED: 05/21/10
SHEET 5 OF 7

AECOM	AECOM USA GROUP, INC. 1200 SUMMIT AVENUE, SUITE 600 FORT WORTH, TEXAS 76102 WWW.AECOM.COM 817.698.6770		
	Date: 12/07/09	Project No. 60102581	60052528 R206By.dwg

NO PART OR PARTS OF THIS DRAWING MAY BE REPRODUCED OR TRANSMITTED IN ANY WAY OR FORM (ELECTRONIC, MECHANICAL, PHOTOCOPYING, OR OTHERWISE) WITHOUT THE EXPRESS WRITTEN PERMISSION OF AECOM.

J:\60052528 Possum Kingdom Lake\02.01 Assimilation of Data\Group 2\RF205\60052528 R206By.dwg 12/10/2009 1:03:51 PM CST

POSSUM KINGDOM LAKE

THE BRAZOS RIVER CONSERVATION AND RECLAMATION DISTRICT
TRACT 38-1-50
VOLUME 184, PAGE 150
D.R.P.P.C.T.

F.E.R.C. BUFFER AREA
1.6244 ACRES
70,757 SQ. FT.

INTERIOR BLOCK IMPROVEMENTS NOT SHOWN

JOHN F. SMITH SURVEY
ABSTRACT 410

8.6607 ACRES
377,258 SQ. FT.

LOT 8

LEASE BLOCK R206
AREA: 10-B

LOT 9

LOT 10

SHEET 2

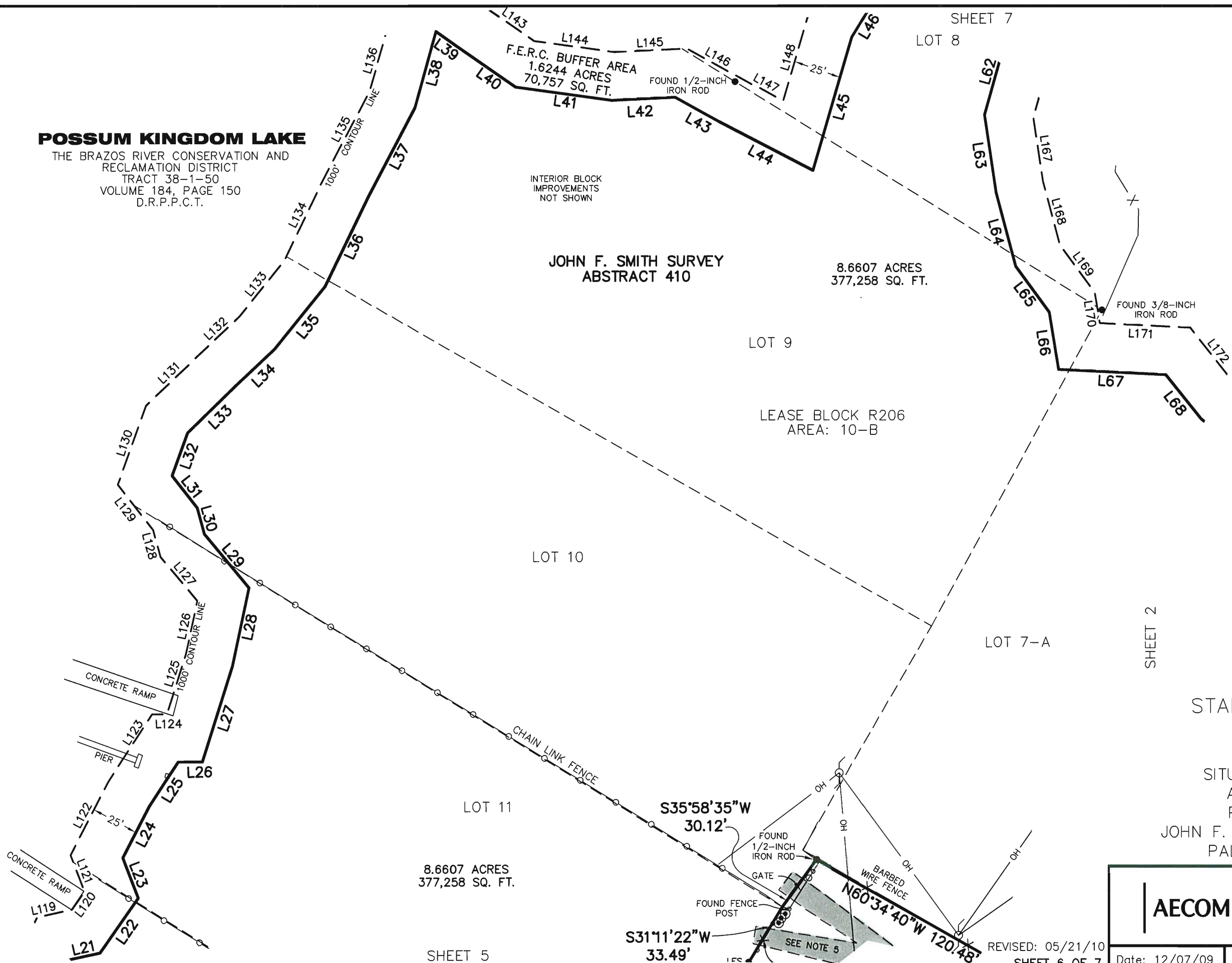
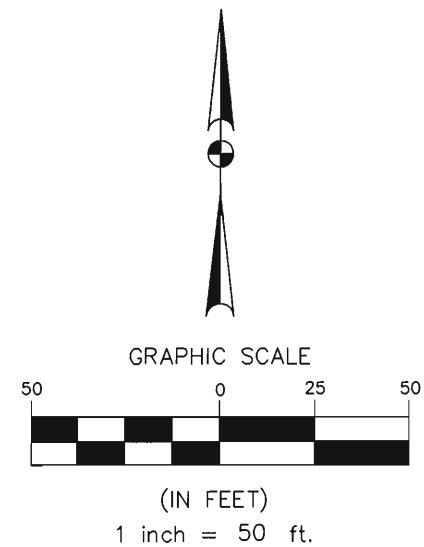
LOT 11

8.6607 ACRES
377,258 SQ. FT.

SHEET 5

SHEET 7

LOT 8



STANDARD LAND SURVEY OF

10.2851 ACRES

SITUATED IN TRACT 38-1-50

AREA 10-B, LOTS 7-12

POSSUM KINGDOM LAKE

JOHN F. SMITH SURVEY, ABSTRACT 410

PALO PINTO COUNTY, TEXAS

AECOM

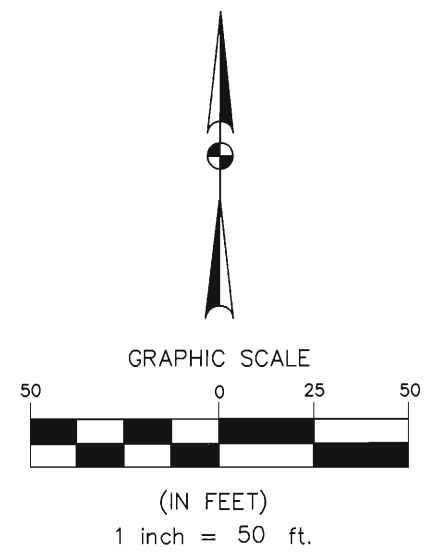
AECOM USA GROUP, INC.
1200 SUMMIT AVENUE, SUITE 600
FORT WORTH, TEXAS 76102
WWW.AECOM.COM
817.698.6770

REVISED: 05/21/10
SHEET 6 OF 7

Date: 12/07/09

Project No. 60102581

60052528
R206By.dwg



POSSUM KINGDOM LAKE
 THE BRAZOS RIVER CONSERVATION AND
 RECLAMATION DISTRICT
 TRACT 38-1-50
 VOLUME 184, PAGE 150
 D.R.P.P.C.T.

F.E.R.C. BUFFER AREA
 1.6244 ACRES
 70,757 SQ. FT.

INTERIOR BLOCK
 IMPROVEMENTS
 NOT SHOWN

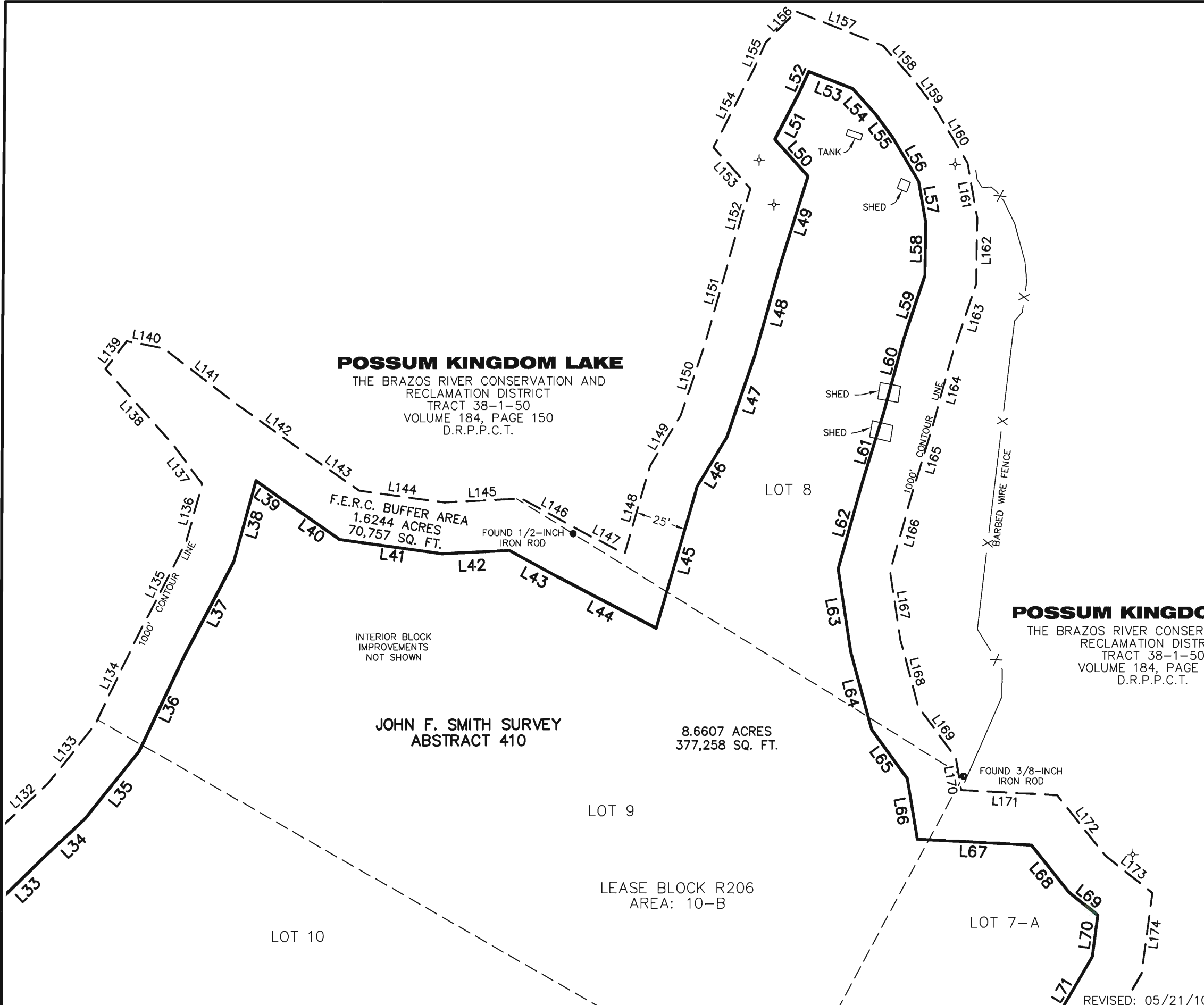
JOHN F. SMITH SURVEY
 ABSTRACT 410

8.6607 ACRES
 377,258 SQ. FT.

POSSUM KINGDOM LAKE
 THE BRAZOS RIVER CONSERVATION AND
 RECLAMATION DISTRICT
 TRACT 38-1-50
 VOLUME 184, PAGE 150
 D.R.P.P.C.T.

STANDARD LAND SURVEY
 OF
10.2851 ACRES
 SITUATED IN TRACT 38-1-50
 AREA 10-B, LOTS 7-12
 POSSUM KINGDOM LAKE
 JOHN F. SMITH SURVEY, ABSTRACT 410
 PALO PINTO COUNTY, TEXAS

AECOM	AECOM USA GROUP, INC. 1200 SUMMIT AVENUE, SUITE 600 FORT WORTH, TEXAS 76102 WWW.AECOM.COM 817.698.6770	
	Date: 12/07/09	Project No. 60102581



SHEET 6

REVISED: 05/21/10
 SHEET 7 OF 7

NO PART OR PARTS OF THIS DRAWING MAY BE REPRODUCED OR RETRANSMITTED IN ANY WAY OR FORM (ELECTRONIC, MECHANICAL, PHOTOCOPYING, OR OTHERWISE) WITHOUT THE EXPRESS WRITTEN PERMISSION OF AECOM.

J:\60052528 Possum Kingdom Lake\102.01 Assimilation of Data\Group 2\R205\60052528 R205By.dwg 12/10/2009 1:03:51 PM CST