

VICINITY MAP
NOT TO SCALE

LINE	BEARING	DISTANCE
L1	S15°03'01"W	59.42'
L2	S15°43'49"W	7.05'
L3	S27°35'03"W	15.74'
L4	S06°33'59"W	24.09'
L5	S16°28'42"W	11.64'
L6	S29°20'46"W	26.19'
L7	S21°19'18"W	45.76'
L8	S16°48'31"W	11.42'
L9	S19°35'06"W	17.68'
L10	S24°13'24"W	19.84'
L11	S27°41'57"W	20.67'
L12	S24°51'28"W	12.03'
L13	S45°16'23"W	27.15'
L14	S29°02'49"W	31.29'
L15	S19°30'30"W	31.50'
L16	S12°48'37"W	15.42'
L17	S31°28'59"W	33.95'
L18	S18°21'41"E	18.61'
L19	S25°25'53"W	0.51'
L20	S26°38'01"W	28.61'
L21	S26°17'59"W	26.05'
L22	S32°50'10"W	21.02'
L23	S30°41'01"W	40.67'
L24	S27°43'29"W	42.03'
L25	S31°53'57"W	40.60'
L26	S28°38'38"W	34.07'
L27	S26°19'39"W	39.43'
L28	S24°14'35"W	18.39'
L29	S23°54'15"W	26.03'
L30	S32°23'04"W	41.77'
L31	S20°16'27"W	39.66'
L32	S33°49'29"W	32.40'
L33	S30°06'49"W	13.42'
L34	S41°18'01"W	12.06'
L35	S41°19'12"W	9.90'
L36	S78°22'25"W	5.15'
L37	S87°19'33"W	11.04'
L38	N40°48'25"W	7.54'
L39	N49°55'05"W	44.37'
L40	N46°50'11"W	34.62'

LINE	BEARING	DISTANCE
L41	N47°14'19"W	31.64'
L42	N46°24'52"W	29.80'
L43	N41°16'13"W	34.41'
L44	N44°22'13"W	43.77'
L45	N50°57'52"W	51.82'
L46	N52°31'47"W	89.22'
L47	N70°49'34"W	44.15'
L48	N84°54'03"W	49.97'
L49	N87°09'51"W	52.38'
L50	S76°31'28"W	28.41'
L51	S82°12'47"W	26.80'
L52	S69°00'02"E	50.27'
L53	S15°03'14"W	54.80'
L54	S15°43'49"W	12.25'
L55	S27°35'03"W	11.65'
L56	S06°33'59"W	19.15'
L57	S16°28'42"W	21.61'
L58	S29°20'46"W	28.32'
L59	S21°19'18"W	40.29'
L60	S16°48'31"W	10.66'
L61	S19°35'06"W	20.92'
L62	S24°13'24"W	23.38'
L63	S26°19'07"W	40.73'
L64	S45°16'23"W	29.03'
L65	S29°02'49"W	19.99'
L66	S19°30'30"W	24.40'
L67	S12°48'37"W	20.71'
L68	S31°28'59"W	18.94'
L69	S18°21'41"E	15.47'
L70	S26°07'36"W	50.12'
L71	S26°17'59"W	28.76'
L72	S32°50'10"W	22.94'
L73	S30°41'01"W	38.44'
L74	S27°43'29"W	42.56'
L75	S31°53'57"W	41.00'
L76	S28°38'38"W	31.64'
L77	S26°19'39"W	37.51'
L78	S24°14'35"W	17.33'
L79	S23°54'15"W	29.59'
L80	S32°23'04"W	40.17'

LINE	BEARING	DISTANCE
L81	S20°16'27"W	40.30'
L82	S33°49'29"W	36.72'
L83	S30°06'49"W	16.70'
L84	S41°18'44"W	43.62'
L85	S78°22'25"W	25.82'
L86	S87°19'33"W	21.96'
L87	N79°06'31"W	21.97'
L88	N40°48'25"W	21.32'
L89	N49°55'05"W	41.74'
L90	N46°49'39"W	100.02'
L91	N41°16'13"W	35.31'
L92	N44°22'13"W	39.54'
L93	N50°57'52"W	48.26'
L94	N52°31'47"W	80.48'
L95	N70°49'34"W	29.93'
L96	N84°54'03"W	42.81'
L97	N87°09'51"W	44.22'
L98	S76°31'28"W	21.78'
L99	N39°52'16"W	58.78'

ACREAGE TABLE		
LEASE BLOCK: 6.1939 ACRES		
F.E.R.C. BUFFER AREA: 1.7136 ACRES		
SURVEY BLOCK: 7.9075 ACRES TOTAL		

SURVEYORS CERTIFICATE

TO: BRAZOS RIVER AUTHORITY, PATTERSON PK LAND PARTNERSHIP, LTD., AND HERITAGE TITLE COMPANY OF AUSTIN, INC.

I, JAMES T. MULLER, A REGISTERED PROFESSIONAL LAND SURVEYOR IN THE STATE OF TEXAS, REGISTRATION NUMBER 4522, HEREBY STATE THAT A SURVEY OF THE REAL PROPERTY DESCRIBED IN SEPARATE LEGAL DESCRIPTION AS NOTED HEREON, WAS ACTUALLY MADE UPON THE GROUND UNDER MY DIRECTION AND SUPERVISION, AND THAT TO THE BEST OF MY PROFESSIONAL KNOWLEDGE AND BELIEF, THE INFORMATION SHOWN HEREON IS CORRECT AS DETERMINED BY SAID SURVEY.

THIS SURVEY SUBSTANTIALLY COMPLIES WITH THE CURRENT TEXAS SOCIETY OF PROFESSIONAL SURVEYORS STANDARDS AND SPECIFICATIONS FOR A CATEGORY 1B, CONDITION II SURVEY.

JAMES T. MULLER
REGISTERED PROFESSIONAL LAND SURVEYOR
TEXAS REGISTRATION NO. 4522

DATE: FEBRUARY 12, 2010



NOTES:

- 1) BEARINGS AND COORDINATES SHOWN HEREON ARE BASED ON THE NORTH AMERICAN DATUM OF 1983, TEXAS COORDINATE SYSTEM, NORTH CENTRAL ZONE (4202).
- 2) 1,000-FOOT CONTOUR ELEVATION OF POSSUM KINGDOM LAKE IS DETERMINED BASED ON MEASUREMENTS FROM THE TOP OF THE EXISTING SPILLWAY CREST GATES AT THE MORRIS SHEPPARD DAM BEING AT ELEVATION 1,000- FEET ABOVE MEAN SEA LEVEL AS NOTED IN FEDERAL POWER COMMISSION REPORT PROJECT NO. 1490 - TEXAS ON JUNE 2, 1938.
- 3) SET = 5/8" IRON ROD W/CAP STAMPED "AECOM" SET; D.R.P.C.T.= DEED RECORDS, PALO PINTO COUNTY, TEXAS; P.R.P.C.T.= PLAT RECORDS, PALO PINTO COUNTY, TEXAS; F.E.R.C.= FEDERAL ENERGY REGULATORY COMMISSION; J.R.P.C.T.= JUDGEMENT RECORDS, PALO PINTO COUNTY, TEXAS.
- 4) METES AND BOUNDS DESCRIPTIONS TO ACCOMPANY THIS SURVEY.
- 5) THERE IS A 15' BUILDING OR SETBACK LINE AND A 10' UTILITY EASEMENT ON EACH SIDE OF ALL SIDE LOT LINES IN BLOCK D; COMMON AREAS, GREENBELT AREAS AND DRAINAGE EASEMENTS ARE ALSO DESIGNATED AS UTILITY EASEMENTS AS NOTED ON THE RANCH ON POSSUM KINGDOM SECTION 1 RECORDED IN VOLUME 7, PAGE 90 D.R.P.C.T.

STANDARD LAND SURVEY
OF
7.9075 ACRES
AREA 0-1

LOTS D10 B.R.A. - D16 B.R.A., BLOCK D
THE RANCH ON POSSUM KINGDOM LAKE
C.E.P.I. & M. CO. SURVEY, ABSTRACT 138
PALO PINTO COUNTY, TEXAS

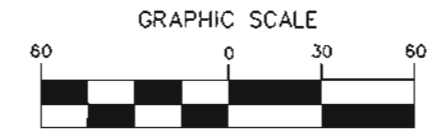
AECOM

AECOM USA GROUP, INC.
1200 SUMMIT AVENUE, SUITE 600
FORT WORTH, TEXAS 76102
WWW.AECOM.COM
817.698.6770

POSSUM KINGDOM LAKE

THE BRAZOS RIVER CONSERVATION AND RECLAMATION DISTRICT
TRACT 2-1-45
VOLUME 182, PAGE 297
D.R.P.P.C.T.

BLOCK D
THE RANCH ON POSSUM KINGDOM SECTION 1
VOLUME 7, PAGE 90
D.R.T.C.T.



(IN FEET)
1 inch = 60 ft.

LEGEND

● = LEASE CORNER MARKER
"AS NOTED"

POINT OF BEGINNING

FOUND 1/2-INCH IRON ROD W/CAP STAMPED "CLEAR FORK"
N 6,999,023.45
E 1,988,320.01

POSSUM KINGDOM CONTROL MONUMENT NO. 5
N53°53'39"E, 2832.68'

F.E.R.C. POINT OF BEGINNING

SET MAG NAIL

S69°00'02"E
15' UTILITY EASEMENT VOLUME 7, PAGE 80, D.R.H.C.T.

228.88'

681.03'

D10 B.R.A.

FOUND 1/2-INCH IRON ROD W/CAP STAMPED "CLEAR FORK"

LEASE BLOCK R173
AREA 0-1
6.1939 ACRES
269,805 SQ. FT.
INTERIOR BLOCK IMPROVEMENTS NOT SHOWN

D11 B.R.A.

FOUND 1/2-INCH IRON ROD WITH CAP

FOUND 1/2-INCH IRON ROD WITH CAP

D12

N22°10'52"E

D13

FOUND 1/2-INCH IRON ROD W/CAP STAMPED "CLEAR FORK"

D12 B.R.A.

VARIABLE WIDTH BUILDING LINE

F.E.R.C. BUFFER AREA
1.7136 ACRES
74,646 SQ. FT.

POSSUM KINGDOM LAKE

THE BRAZOS RIVER CONSERVATION AND RECLAMATION DISTRICT
TRACT 2-1-45
VOLUME 182, PAGE 297
D.R.P.P.C.T.

STANDARD LAND SURVEY
OF
7.9075 ACRES
AREA 0-1

LOTS D10 B.R.A. - D16 B.R.A., BLOCK D
THE RANCH ON POSSUM KINGDOM LAKE
C.E.P.I. & M. CO. SURVEY, ABSTRACT 138
PALO PINTO COUNTY, TEXAS

AECOM

AECOM USA GROUP, INC.
1200 SUMMIT AVENUE, SUITE 600
FORT WORTH, TEXAS 76102
WWW.AECOM.COM
817.698.6770

NO PART OR PARTS OF THIS DRAWING MAY BE REPRODUCED OR TRANSMITTED IN ANY WAY OR FORM (ELECTRONIC, MECHANICAL, PHOTOCOPYING, OR OTHERWISE) WITHOUT THE EXPRESS WRITTEN PERMISSION OF AECOM.

S:\Survey\Projects\60052528\3.0 Ref Docs\Drafting\Blocks\R173\60052528 R1738y.dwg 12/4/2009 5:48:59 AM CST

BLOCK D
THE RANCH ON POSSUM KINGDOM SECTION 1
VOLUME 7, PAGE 90
D.R.T.C.T.

D14

FOUND 1/2-INCH IRON
ROD W/CAP STAMPED
"CLEAR FORK"

D12 B.R.A.

D13

681.03'

N22°10'52"E

LEASE BLOCK R173
AREA 0-1
6.1939 ACRES
269,805 SQ. FT.
INTERIOR BLOCK
IMPROVEMENTS NOT
SHOWN

D13 B.R.A.

6" x 6" CONCRETE
BRAZOS RIVER
AUTHORITY
MONUMENT

VARIABLE WIDTH BUILDING LINE

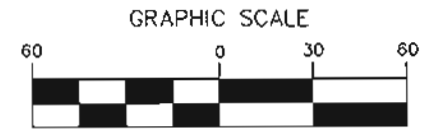
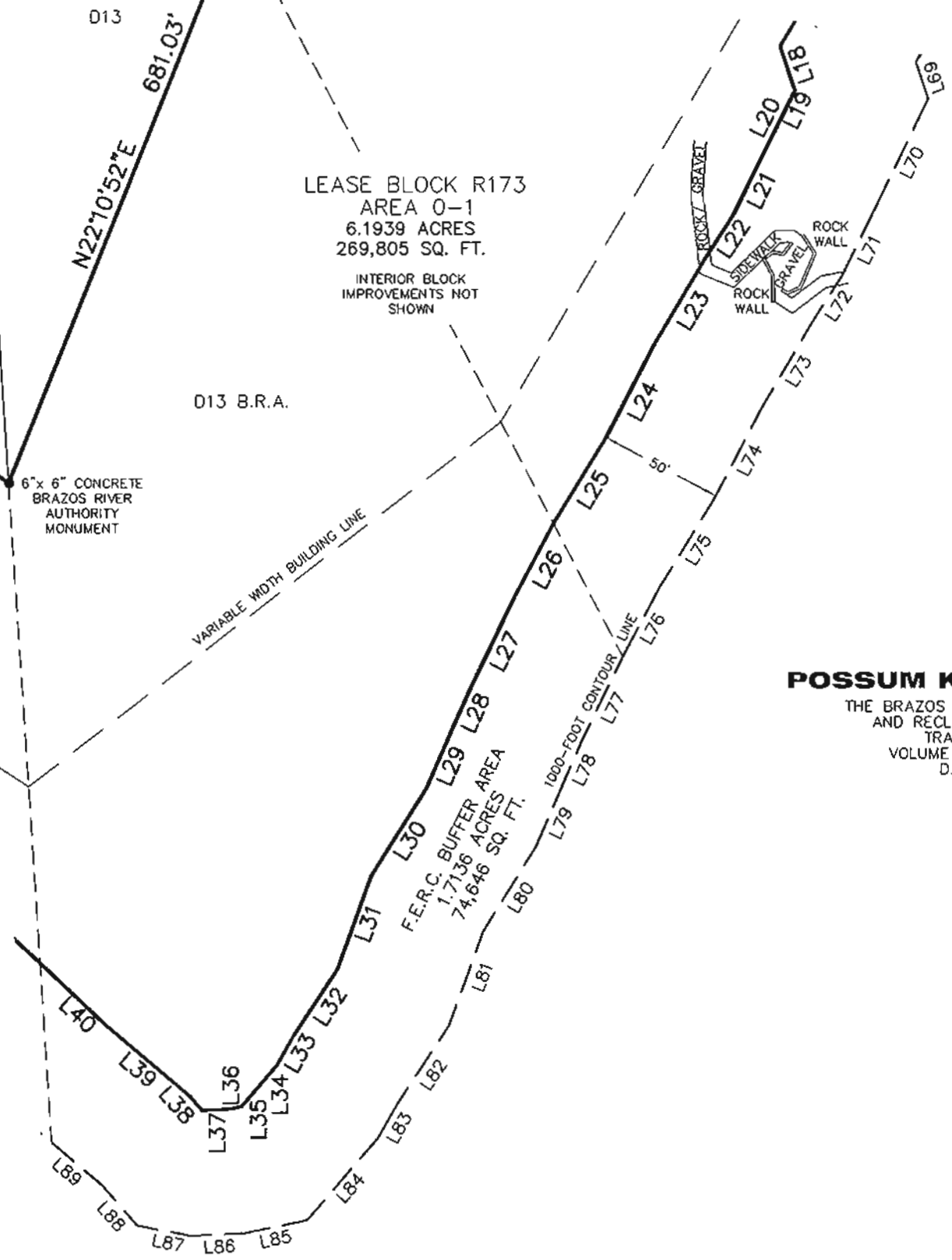
D14 B.R.A.

POSSUM KINGDOM LAKE

THE BRAZOS RIVER CONSERVATION
AND RECLAMATION DISTRICT
TRACT 2-1-45
VOLUME 182, PAGE 297
D.R.P.P.C.T.

STANDARD LAND SURVEY
OF
7.9075 ACRES
AREA 0-1

LOTS D10 B.R.A. - D16 B.R.A., BLOCK D
THE RANCH ON POSSUM KINGDOM LAKE
C.E.P.I. & M. CO. SURVEY, ABSTRACT 138
PALO PINTO COUNTY, TEXAS



(IN FEET)
1 inch = 60 ft.

LEGEND

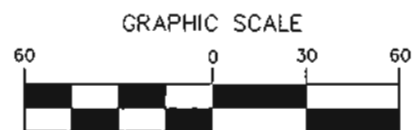
● = LEASE CORNER MARKER
"AS NOTED"

AECOM

AECOM USA GROUP, INC.
1200 SUMMIT AVENUE, SUITE 600
FORT WORTH, TEXAS 76102
WWW.AECOM.COM
817.698.6770

C.E.P.I. & M. CO. SURVEY, ABSTRACT 138

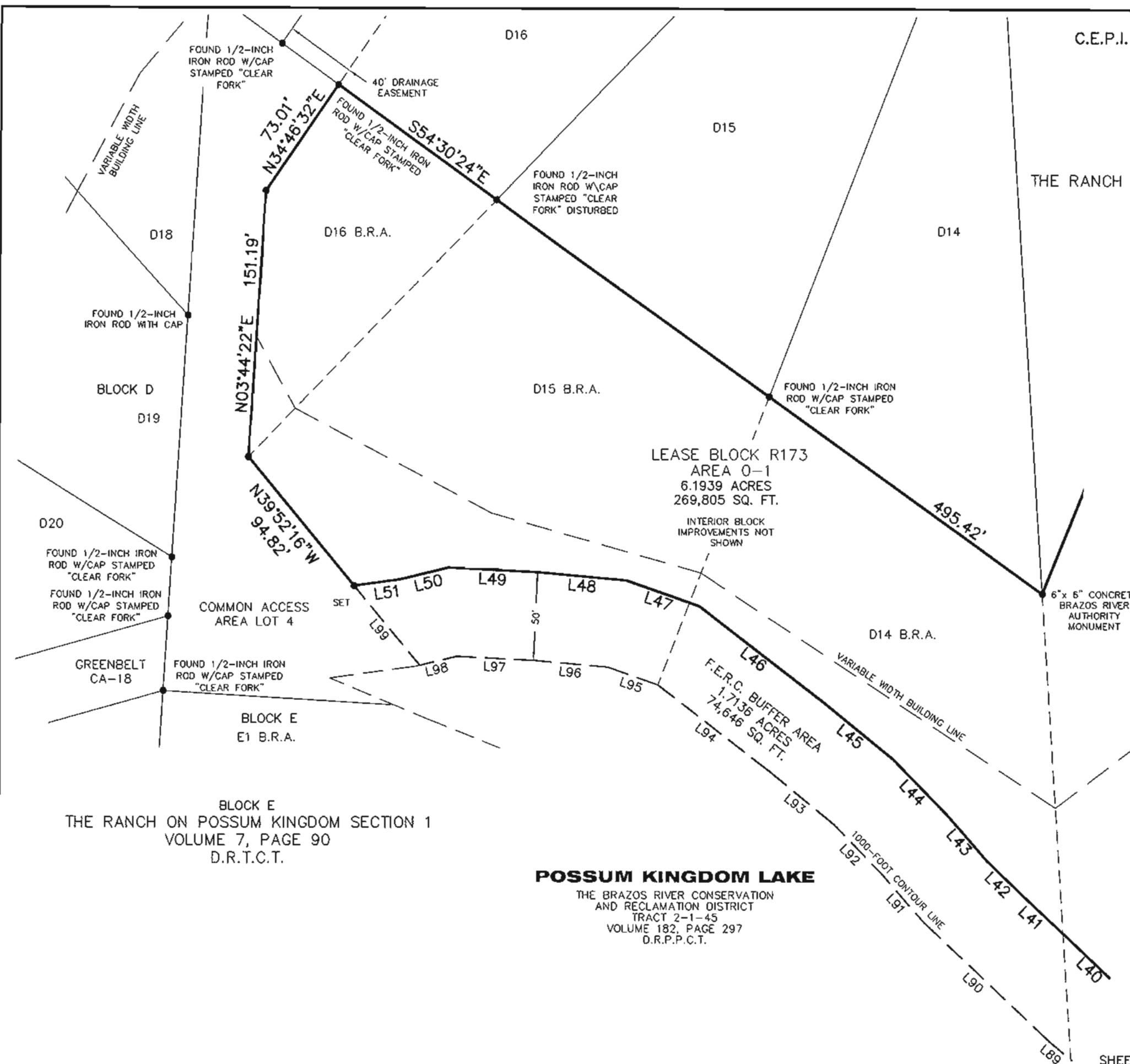
BLOCK D
THE RANCH ON POSSUM KINGDOM SECTION 1
VOLUME 7, PAGE 90
D.R.T.C.T.



(IN FEET)
1 inch = 60 ft.

LEGEND

● = LEASE CORNER MARKER
"AS NOTED"



LEASE BLOCK R173
AREA 0-1
6.1939 ACRES
269,805 SQ. FT.
INTERIOR BLOCK
IMPROVEMENTS NOT
SHOWN

F.E.R.C. BUFFER AREA
1.7136 ACRES
74,646 SQ. FT.

STANDARD LAND SURVEY
OF
7.9075 ACRES
AREA 0-1

LOTS D10 B.R.A. - D16 B.R.A., BLOCK D
THE RANCH ON POSSUM KINGDOM LAKE
C.E.P.I. & M. CO. SURVEY, ABSTRACT 138
PALO PINTO COUNTY, TEXAS

AECOM

AECOM USA GROUP, INC.
1200 SUMMIT AVENUE, SUITE 600
FORT WORTH, TEXAS 76102
WWW.AECOM.COM
817.698.6770

Date: 12/03/09 Project No. 60052528.103 60052528 R173By.dwg

SHEET 4 OF 4

NO PART OR PARTS OF THIS DRAWING MAY BE REPRODUCED OR RETRANSMITTED IN ANY WAY OR FORM (ELECTRONIC, MECHANICAL, PHOTOCOPIING, OR OTHERWISE) WITHOUT THE EXPRESS WRITTEN PERMISSION OF AECOM.

S:\Survey\Projects\60052528\3.0 Ref Docs\Drafting\Blocks\R173\60052528 R173By.dwg 12/4/2009 5:48:59 AM CST