

BLOCK I
THE RANCH ON POSSUM KINGDOM SECTION 1
VOLUME 7, PAGE 90
D.R.T.C.T.

C.E.P.I. & M. CO. SURVEY, ABSTRACT 138

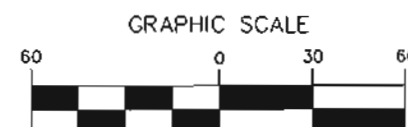
F.M. HARRIS SURVEY, ABSTRACT 247

POINT OF BEGINNING
PART 1
FOUND 5/8-INCH
IRON ROD BEARS
N36°44'E, 0.7'
N 6,999,086.93
E 1,986,082.35

FOUND 5/8-INCH
IRON ROD BEARS
N67°45'E, 1.0'

LEASE BLOCK R172
0.4329 OF ONE ACRE
11 B.R.A. 18,857 SQ. FT.

F.E.R.C.
POINT OF BEGINNING

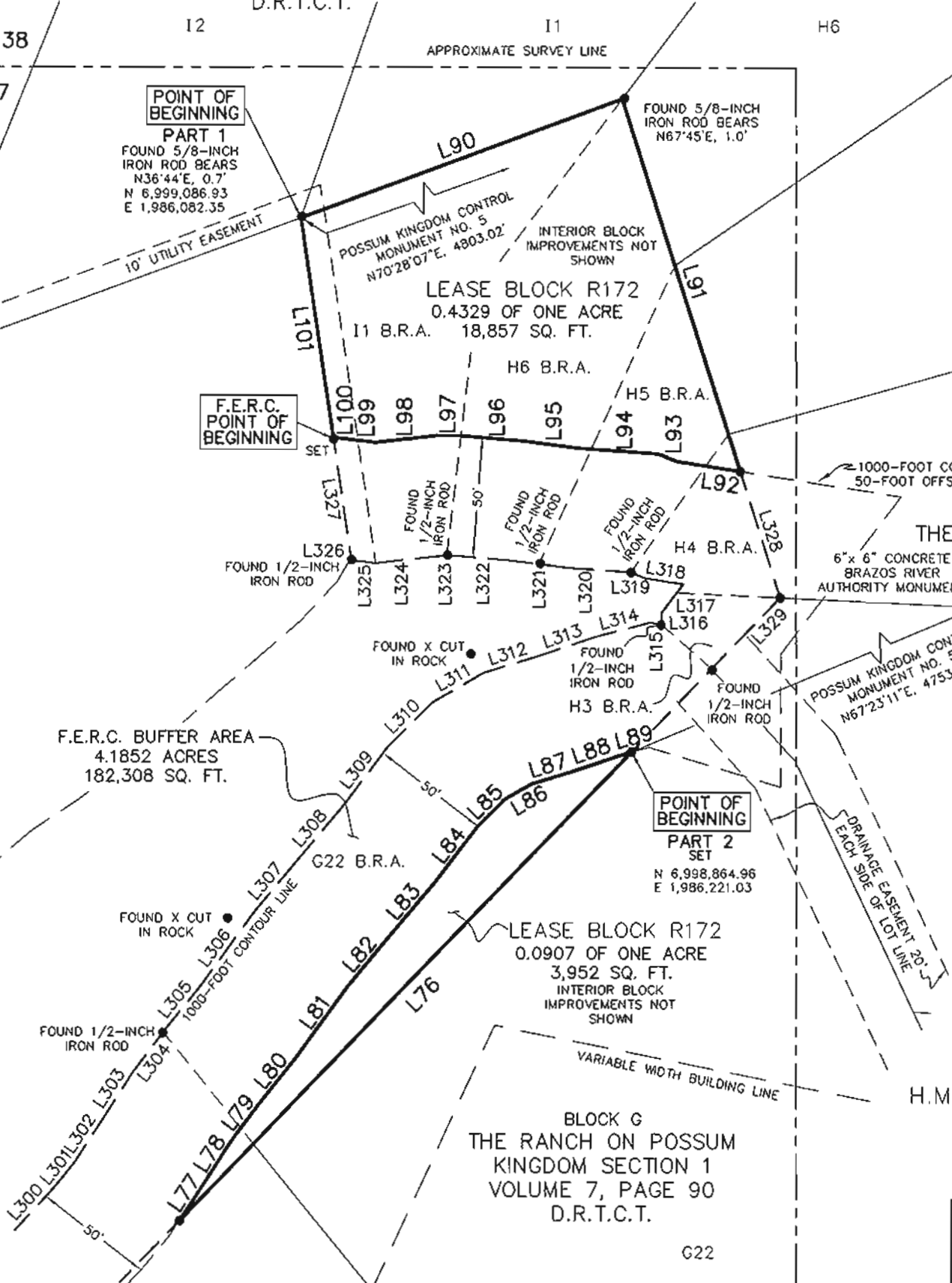


(IN FEET)
1 inch = 60 ft.

LEGEND
● = LEASE CORNER MARKER
"AS NOTED"

- NOTES:
- 1) BEARINGS AND COORDINATES SHOWN HEREON ARE BASED ON THE NORTH AMERICAN DATUM OF 1983, TEXAS COORDINATE SYSTEM, NORTH CENTRAL ZONE (4202).
 - 2) 1,000-FOOT CONTOUR ELEVATION OF POSSUM KINGDOM LAKE IS DETERMINED BASED ON MEASUREMENTS FROM THE TOP OF THE EXISTING SPILLWAY CREST GATES AT THE MORRIS SHEPPARD DAM BEING AT ELEVATION 1,000-FEET ABOVE MEAN SEA LEVEL AS NOTED IN FEDERAL POWER COMMISSION REPORT PROJECT NO. 1490 - TEXAS ON JUNE 2, 1938.
 - 3) SET = 5/8" IRON ROD W/CAP STAMPED "AECOM" SET; D.R.P.P.C.T.= DEED RECORDS, PALO PINTO COUNTY, TEXAS; P.R.P.P.C.T.= PLAT RECORDS, PALO PINTO COUNTY, TEXAS; F.E.R.C.= FEDERAL ENERGY REGULATORY COMMISSION; J.R.P.P.C.T.= JUDGEMENT RECORDS, PALO PINTO COUNTY, TEXAS.
 - 4) METES AND BOUNDS DESCRIPTIONS TO ACCOMPANY THIS SURVEY.
 - 5) THERE IS A 15' BUILDING OR SETBACK LINE AND A 10' UTILITY EASEMENT ON EACH SIDE OF ALL SIDE LOT LINES IN BLOCKS G, H, & I; COMMON AREAS, GREENBELT AREAS AND DRAINAGE EASEMENTS ARE ALSO DESIGNATED AS UTILITY EASEMENTS AS NOTED ON THE RANCH ON POSSUM KINGDOM SECTION 1 RECORDED IN VOLUME 7, PAGE 90 D.R.P.P.C.T.

POSSUM KINGDOM LAKE
THE BRAZOS RIVER CONSERVATION
AND RECLAMATION DISTRICT
TRACT 2-1-45
VOLUME 182, PAGE 297
D.R.P.P.C.T.



BLOCK H
THE RANCH ON POSSUM KINGDOM SECTION 1
VOLUME 7, PAGE 90
D.R.T.C.T.

BLOCK H
STANDARD LAND SURVEY
OF
5.5654 ACRES
AREA 0-1
F11 B.R.A., BLOCK F
LOTS G1 B.R.A. - G22 B.R.A., BLOCK G
LOTS H3 B.R.A. - H6 B.R.A., BLOCK H
I1 B.R.A., BLOCK I
THE RANCH ON POSSUM KINGDOM LAKE
C.E.P.I. & M. CO. SURVEY, ABSTRACT 138
H.M.W.P. & H.A. LONGINO SURVEY, ABSTRACT 2070
F.M. HARRIS SURVEY, ABSTRACT 247
F.M. HARRIS SURVEY, ABSTRACT 248
PALO PINTO COUNTY, TEXAS

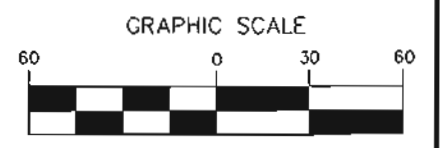
AECOM
AECOM USA GROUP, INC.
1200 SUMMIT AVENUE, SUITE 600
FORT WORTH, TEXAS 76102
WWW.AECOM.COM
817.698.6770

NO PART OR PARTS OF THIS DRAWING MAY BE REPRODUCED OR TRANSMITTED IN ANY WAY OR FORM (ELECTRONIC, MECHANICAL, PHOTOCOPYING, OR OTHERWISE) WITHOUT THE EXPRESS WRITTEN PERMISSION OF AECOM.

S:\Survey\Projects\60052528\3.0 Ref Docs\Drafting\Blocks\172\60052528 R172B.dwg 2/18/2010 7:38:48 AM CST

F.M. HARRIS SURVEY, ABSTRACT 247

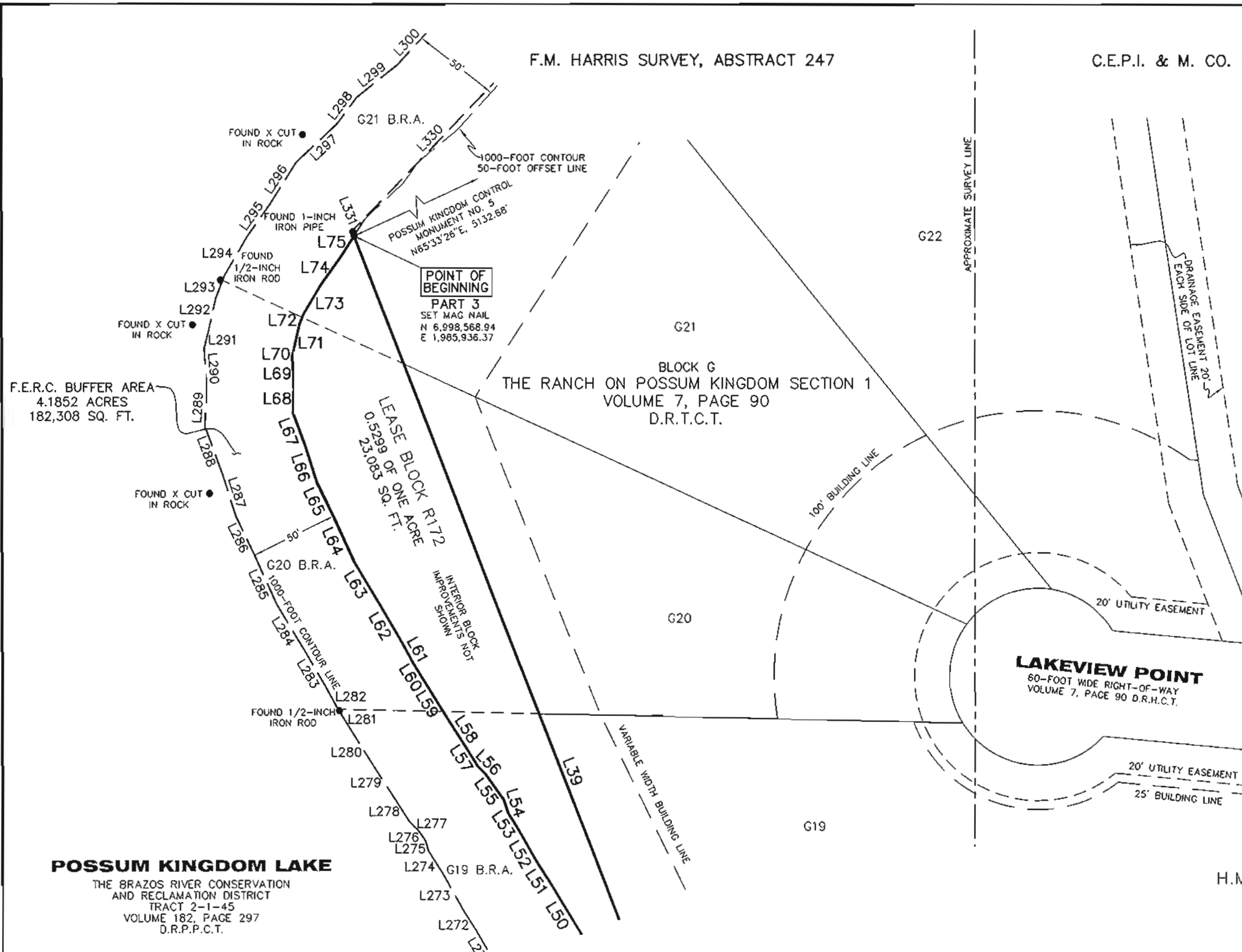
C.E.P.I. & M. CO. SURVEY, ABSTRACT 138



(IN FEET)
1 inch = 60 ft.

LEGEND

● = LEASE CORNER MARKER
"AS NOTED"



F.E.R.C. BUFFER AREA
4.1852 ACRES
182,308 SQ. FT.

POINT OF BEGINNING
PART 3
SET MAG NAIL
N 6,998,568.94
E 1,985,936.37

BLOCK G
THE RANCH ON POSSUM KINGDOM SECTION 1
VOLUME 7, PAGE 90
D.R.T.C.T.

LEASE BLOCK R172
0.5299 OF ONE ACRE
23,083 SQ. FT.

POSSUM KINGDOM LAKE
THE BRAZOS RIVER CONSERVATION
AND RECLAMATION DISTRICT
TRACT 2-1-45
VOLUME 182, PAGE 297
D.R.P.P.C.T.

STANDARD LAND SURVEY
OF

5.5654 ACRES

AREA 0-1

F11 B.R.A., BLOCK F

LOTS G1 B.R.A. - G22 B.R.A., BLOCK G

LOTS H3 B.R.A. - H6 B.R.A., BLOCK H

I1 B.R.A., BLOCK I

THE RANCH ON POSSUM KINGDOM LAKE

C.E.P.I. & M. CO. SURVEY, ABSTRACT 138

H.M.W.P. & H.A. LONGINO SURVEY, ABSTRACT 2070

F.M. HARRIS SURVEY, ABSTRACT 247

F.M. HARRIS SURVEY, ABSTRACT 248

PALO PINTO COUNTY, TEXAS

AECOM

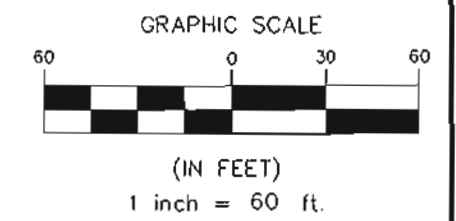
AECOM USA GROUP, INC.
1200 SUMMIT AVENUE, SUITE 600
FORT WORTH, TEXAS 76102
WWW.AECOM.COM
817.698.6770

NO PART OR PARTS OF THIS DRAWING MAY BE REPRODUCED OR TRANSMITTED IN ANY WAY OR FORM (ELECTRONIC, MECHANICAL, PHOTOCOPIING, OR OTHERWISE) WITHOUT THE EXPRESS WRITTEN PERMISSION OF AECOM.

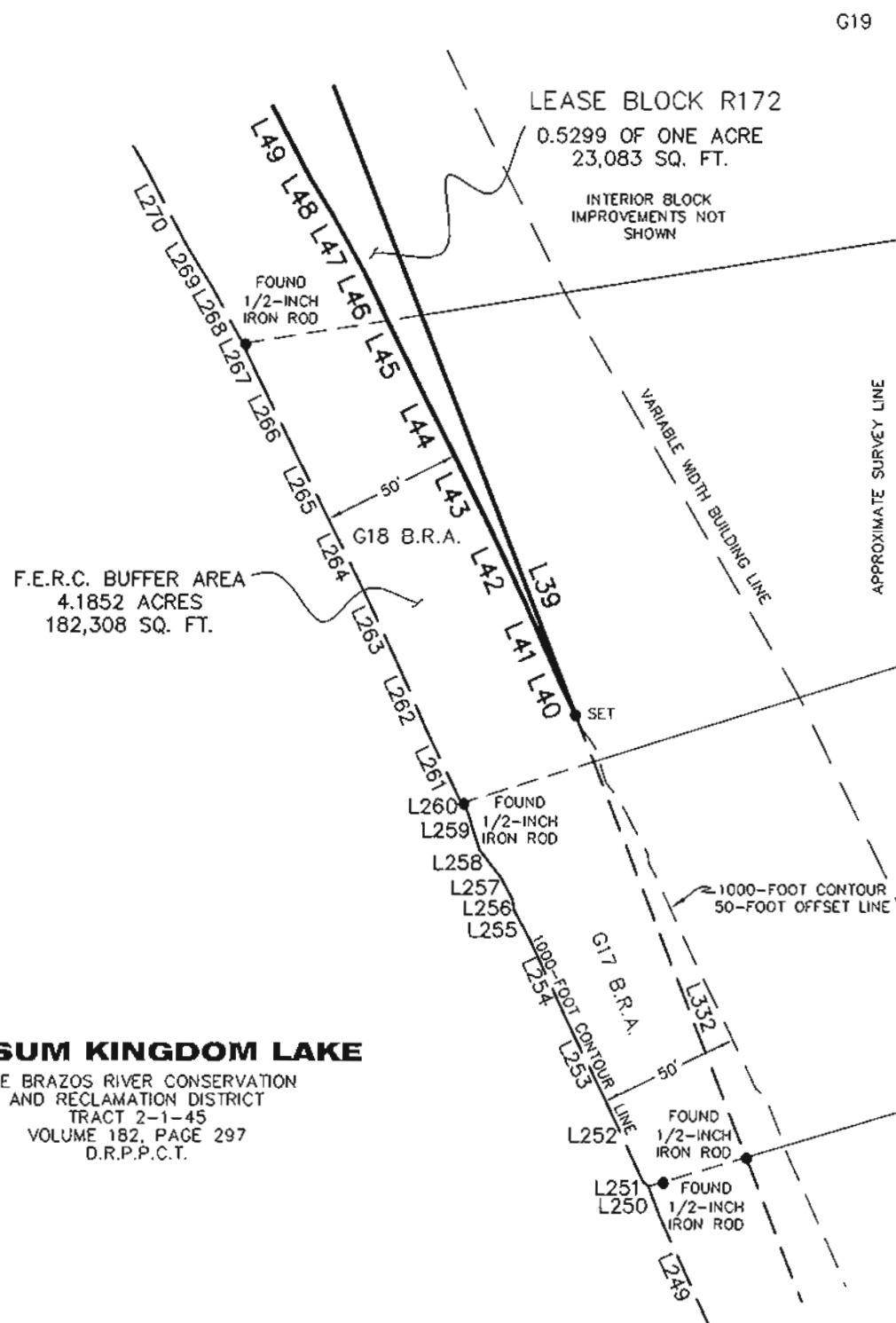
S:\Survey\Projects\60052528\3.0 Ref Docs\Drafting\Blocks\R172\60052528 R172By.dwg 2/18/2010 7:38:48 AM CST

F.M. HARRIS SURVEY, ABSTRACT 247

C.E.P.I. & M. CO. SURVEY, ABSTRACT 138



LEGEND
● = LEASE CORNER MARKER
"AS NOTED"



THE RANCH ROAD
60-FOOT WIDE RIGHT-OF-WAY
VOLUME 7, PAGE 90 D.R.H.C.T.

BLOCK G
THE RANCH ON POSSUM KINGDOM SECTION 1
VOLUME 7, PAGE 90
D.R.T.C.T.

STANDARD LAND SURVEY
OF
5.5654 ACRES

AREA 0-1
F11 B.R.A., BLOCK F
LOTS G1 B.R.A. - G22 B.R.A., BLOCK G
LOTS H3 B.R.A. - H6 B.R.A., BLOCK H
I1 B.R.A., BLOCK I

THE RANCH ON POSSUM KINGDOM LAKE
C.E.P.I. & M. CO. SURVEY, ABSTRACT 138
H.M.W.P. & H.A. LONGINO SURVEY, ABSTRACT 2070
F.M. HARRIS SURVEY, ABSTRACT 247
F.M. HARRIS SURVEY, ABSTRACT 248
PALO PINTO COUNTY, TEXAS

POSSUM KINGDOM LAKE
THE BRAZOS RIVER CONSERVATION
AND RECLAMATION DISTRICT
TRACT 2-1-45
VOLUME 182, PAGE 297
D.R.P.P.C.T.

F.E.R.C. BUFFER AREA
4.1852 ACRES
182,308 SQ. FT.

LEASE BLOCK R172
0.5299 OF ONE ACRE
23,083 SQ. FT.
INTERIOR BLOCK
IMPROVEMENTS NOT
SHOWN

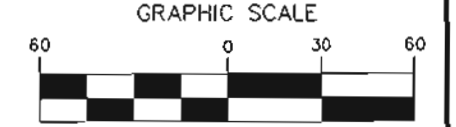
AECOM	AECOM USA GROUP, INC. 1200 SUMMIT AVENUE, SUITE 600 FORT WORTH, TEXAS 76102 WWW.AECOM.COM 817.698.6770	
	Date: 12/10/09	Project No. 60052528.103

NO PART OR PARTS OF THIS DRAWING MAY BE REPRODUCED OR RETRANSMITTED IN ANY WAY OR FORM (ELECTRONIC, MECHANICAL, PHOTOCOPIING, OR OTHERWISE) WITHOUT THE EXPRESS WRITTEN PERMISSION OF AECOM.

S:\Survey\Projects\60052528\3.0 Rev Desc\Drawing\Blocks\R172\60052528 R172By.dwg 2/18/2010 7:38:48 AM CST

F.M. HARRIS SURVEY, ABSTRACT 247

C.E.P.I. & M. CO. SURVEY, ABSTRACT 138



(IN FEET)
1 inch = 60 ft.

LEGEND

● = LEASE CORNER MARKER
"AS NOTED"

APPROXIMATE SURVEY LINE

APPROXIMATE SURVEY LINE

G16

G15

BLOCK G
THE RANCH ON POSSUM KINGDOM SECTION 1
VOLUME 7, PAGE 90
D.R.T.C.T.

G14

THE RANCH ROAD
50-FOOT WIDE RIGHT-OF-WAY
VOLUME 7, PAGE 90 D.R.H.C.T.

20' UTILITY EASEMENT

75' BUILDING LINE

VARIABLE WIDTH BUILDING LINE

100-FOOT CONTOUR 50-FOOT OFFSET LINE

100-FOOT CONTOUR LINE

G16 B.R.A.

G15 B.R.A.

G14 B.R.A.

FOUND 1/2-INCH IRON ROD

FOUND 1/2-INCH IRON ROD

FOUND 1/2-INCH IRON ROD

FOUND 1/2-INCH IRON ROD

F.E.R.C. BUFFER AREA
4.1852 ACRES
182,308 SQ. FT.

POSSUM KINGDOM LAKE
THE BRAZOS RIVER CONSERVATION
AND RECLAMATION DISTRICT
TRACT 2-1-45
VOLUME 182, PAGE 297
D.R.P.P.C.T.

STANDARD LAND SURVEY
OF
5.5654 ACRES
AREA 0-1

F11 B.R.A., BLOCK F
LOTS G1 B.R.A. - G22 B.R.A., BLOCK G
LOTS H3 B.R.A. - H6 B.R.A., BLOCK H
I1 B.R.A., BLOCK I

THE RANCH ON POSSUM KINGDOM LAKE
C.E.P.I. & M. CO. SURVEY, ABSTRACT 138
H.M.W.P. & H.A. LONGINO SURVEY, ABSTRACT 2070
F.M. HARRIS SURVEY, ABSTRACT 247
F.M. HARRIS SURVEY, ABSTRACT 248
PALO PINTO COUNTY, TEXAS

F.M. HARRIS SURVEY, ABSTRACT 248

AECOM

AECOM USA GROUP, INC.
1200 SUMMIT AVENUE, SUITE 600
FORT WORTH, TEXAS 76102
WWW.AECOM.COM
817.698.6770

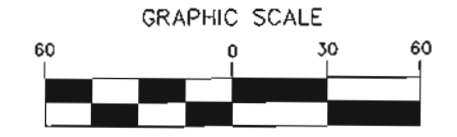
SHEET 5 OF 9

Date: 12/10/09 Project No. 60052528.103 60052528 R172By.dwg

F.M. HARRIS SURVEY, ABSTRACT 248

C.E.P.I. & M. CO. SURVEY, ABSTRACT 138

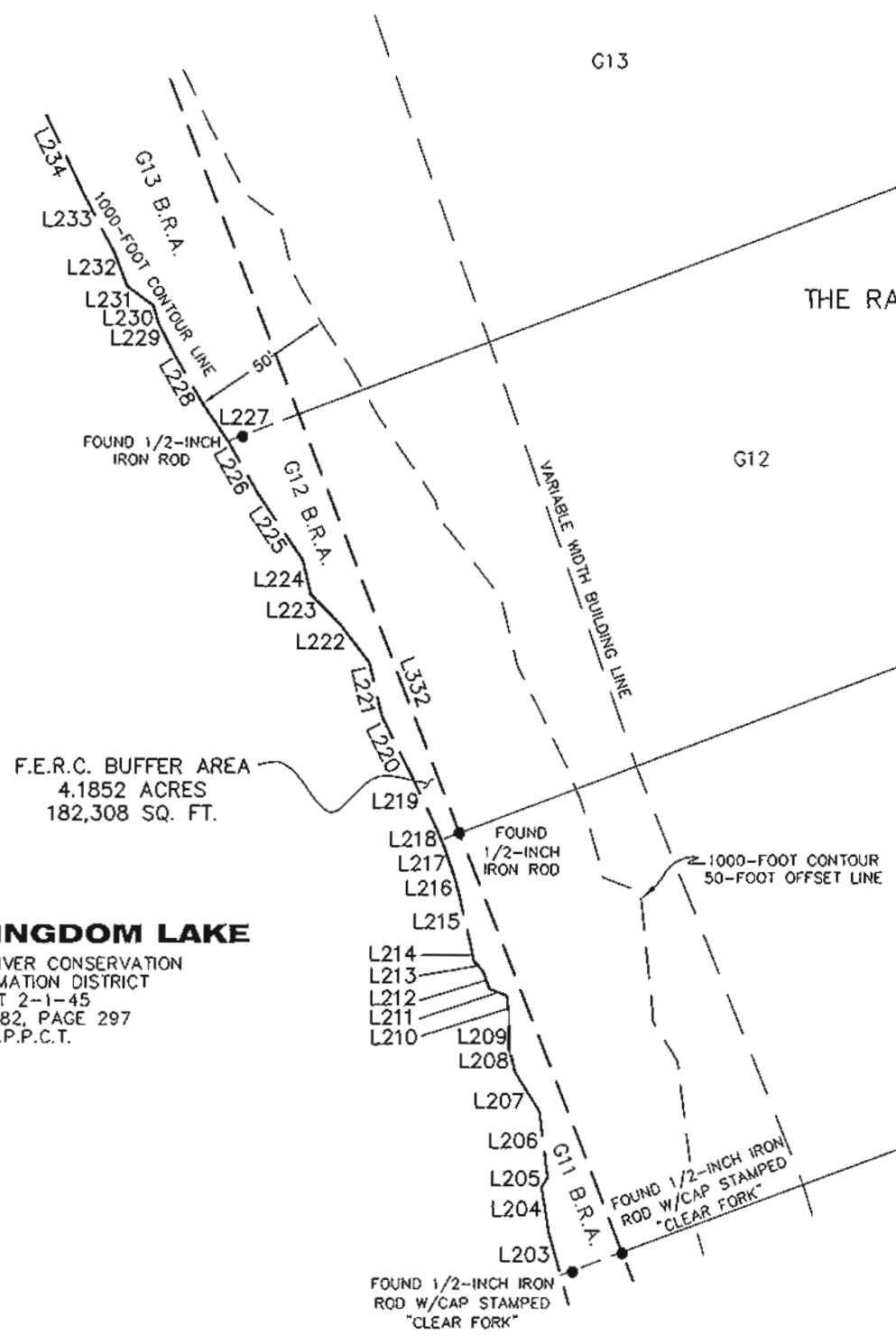
THE RANCH ROAD
60-FOOT WIDE RIGHT-OF-WAY
VOLUME 7, PAGE 90 D.R.H.C.T.



GRAPHIC SCALE
(IN FEET)
1 inch = 60 ft.

LEGEND
● = LEASE CORNER MARKER
"AS NOTED"

BLOCK G
THE RANCH ON POSSUM KINGDOM SECTION 1
VOLUME 7, PAGE 90
D.R.T.C.T.



STANDARD LAND SURVEY
OF
5.5654 ACRES
AREA 0-1

F11 B.R.A., BLOCK F
LOTS G1 B.R.A. - G22 B.R.A., BLOCK G
LOTS H3 B.R.A. - H6 B.R.A., BLOCK H
I1 B.R.A., BLOCK I

THE RANCH ON POSSUM KINGDOM LAKE
C.E.P.I. & M. CO. SURVEY, ABSTRACT 138
H.M.W.P. & H.A. LONGINO SURVEY, ABSTRACT 2070
F.M. HARRIS SURVEY, ABSTRACT 247
F.M. HARRIS SURVEY, ABSTRACT 248
PALO PINTO COUNTY, TEXAS

POSSUM KINGDOM LAKE
THE BRAZOS RIVER CONSERVATION
AND RECLAMATION DISTRICT
TRACT 2-1-45
VOLUME 182, PAGE 297
D.R.P.P.C.T.

F.E.R.C. BUFFER AREA
4.1852 ACRES
182,308 SQ. FT.

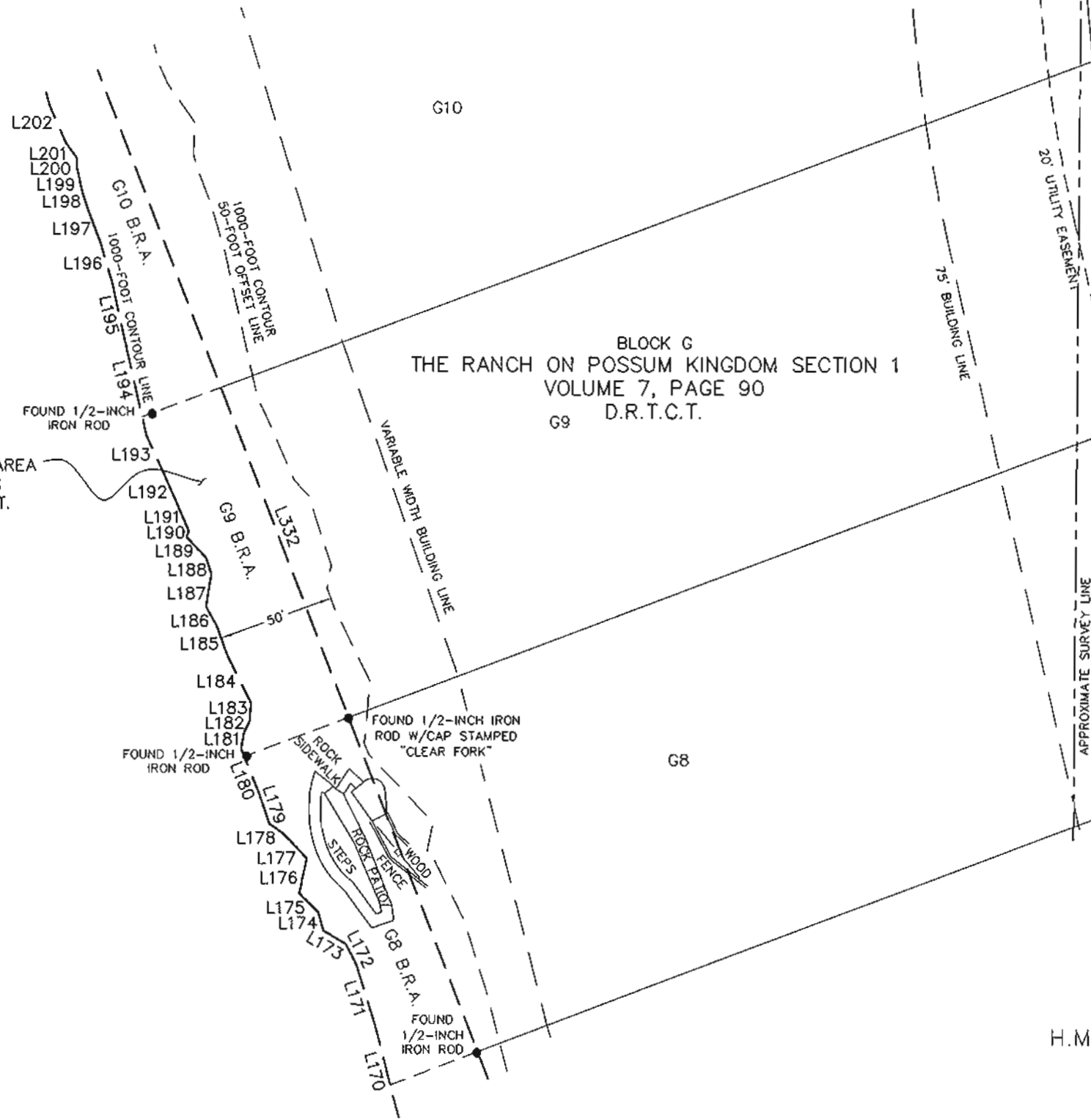
AECOM
AECOM USA GROUP, INC.
1200 SUMMIT AVENUE, SUITE 600
FORT WORTH, TEXAS 76102
WWW.AECOM.COM
817.698.6770

NO PART OR PARTS OF THIS DRAWING MAY BE REPRODUCED OR TRANSMITTED IN ANY WAY OR FORM (ELECTRONIC, MECHANICAL, PHOTOCOPIING, OR OTHERWISE) WITHOUT THE EXPRESS WRITTEN PERMISSION OF AECOM.

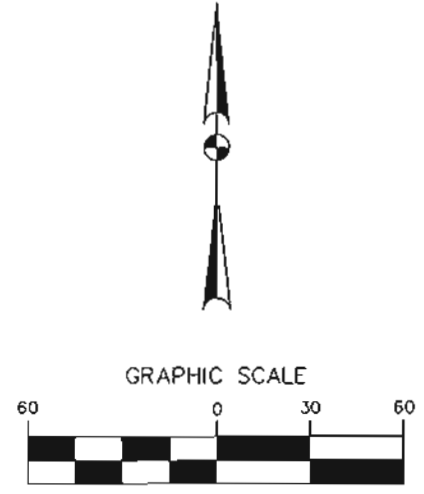
S:\Surveyor\Projects\60052528\3.0 Ref Docs\Drafting\Blocks\172\60052528 R172By.dwg 2/18/2010 7:38:48 AM CST

F.M. HARRIS SURVEY, ABSTRACT 248

C.E.P.I. & M. CO. SURVEY, ABSTRACT 138



THE RANCH ROAD
60-FOOT WIDE RIGHT-OF-WAY
VOLUME 7, PAGE 90 D.R.H.C.T.



LEGEND
● = LEASE CORNER MARKER
"AS NOTED"

POSSUM KINGDOM LAKE
THE BRAZOS RIVER CONSERVATION
AND RECLAMATION DISTRICT
TRACT 2-1-45
VOLUME 182, PAGE 297
D.R.P.P.C.T.

STANDARD LAND SURVEY
OF
5.5654 ACRES
AREA 0-1
F11 B.R.A., BLOCK F
LOTS G1 B.R.A. - G22 B.R.A., BLOCK G
LOTS H3 B.R.A. - H6 B.R.A., BLOCK H
I1 B.R.A., BLOCK I
THE RANCH ON POSSUM KINGDOM LAKE
C.E.P.I. & M. CO. SURVEY, ABSTRACT 138
H.M.W.P. & H.A. LONGINO SURVEY, ABSTRACT 2070
F.M. HARRIS SURVEY, ABSTRACT 247
F.M. HARRIS SURVEY, ABSTRACT 248
PALO PINTO COUNTY, TEXAS

AECOM	AECOM USA GROUP, INC. 1200 SUMMIT AVENUE, SUITE 600 FORT WORTH, TEXAS 76102 WWW.AECOM.COM 817.698.6770	
	Date: 12/10/09	Project No. 60052528.103

NO PART OR PARTS OF THIS DRAWING MAY BE REPRODUCED OR TRANSMITTED IN ANY WAY OR FORM (ELECTRONIC, MECHANICAL, PHOTOCOPIING, OR OTHERWISE) WITHOUT THE EXPRESS WRITTEN PERMISSION OF AECOM.

S:\Source\Projects\60052528\3.0 Ref Docs\Drafting\Blocks\172\60052528_R172By.dwg 2/16/2010 7:38:48 AM CST

BLOCK G
THE RANCH ON POSSUM KINGDOM SECTION
VOLUME 7, PAGE 90
D.R.T.C.T.

G7

LEASE BLOCK R172
0.0033 OF ONE ACRE
144 SQ. FT.

G6

INTERIOR BLOCK
IMPROVEMENTS NOT
SHOWN

POINT OF
BEGINNING

PART 4
SET
N 6,996,234.96
E 1,986,848.72

G5

H.M.W.P. & H.A. LONGINO SURVEY, ABSTRACT 2070

G4

STANDARD LAND SURVEY
OF
5.5654 ACRES
AREA 0-1

F11 B.R.A., BLOCK F
LOTS G1 B.R.A. - G22 B.R.A., BLOCK G
LOTS H3 B.R.A. - H6 B.R.A., BLOCK H
I1 B.R.A., BLOCK I

THE RANCH ON POSSUM KINGDOM LAKE
C.E.P.I. & M. CO. SURVEY, ABSTRACT 138
H.M.W.P. & H.A. LONGINO SURVEY, ABSTRACT 2070
F.M. HARRIS SURVEY, ABSTRACT 247
F.M. HARRIS SURVEY, ABSTRACT 248
PALO PINTO COUNTY, TEXAS

AECOM

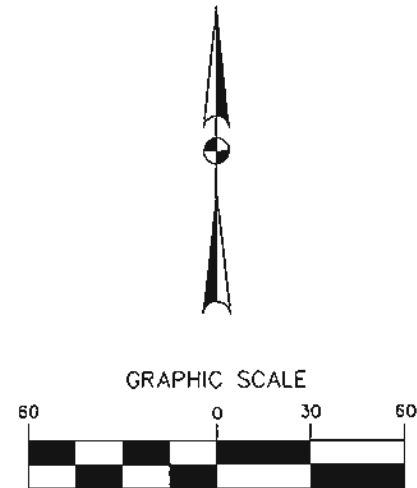
AECOM USA GROUP, INC.
1200 SUMMIT AVENUE, SUITE 600
FORT WORTH, TEXAS 76102
WWW.AECOM.COM
817.698.6770

SHEET 8 OF 9

Date: 12/10/09

Project No. 60052528.103

60052528
R172By.dwg



(IN FEET)
1 inch = 60 ft.

LEGEND

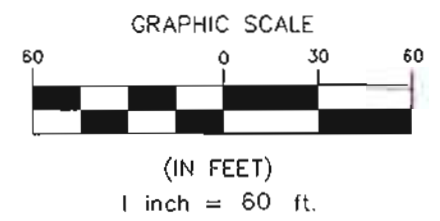
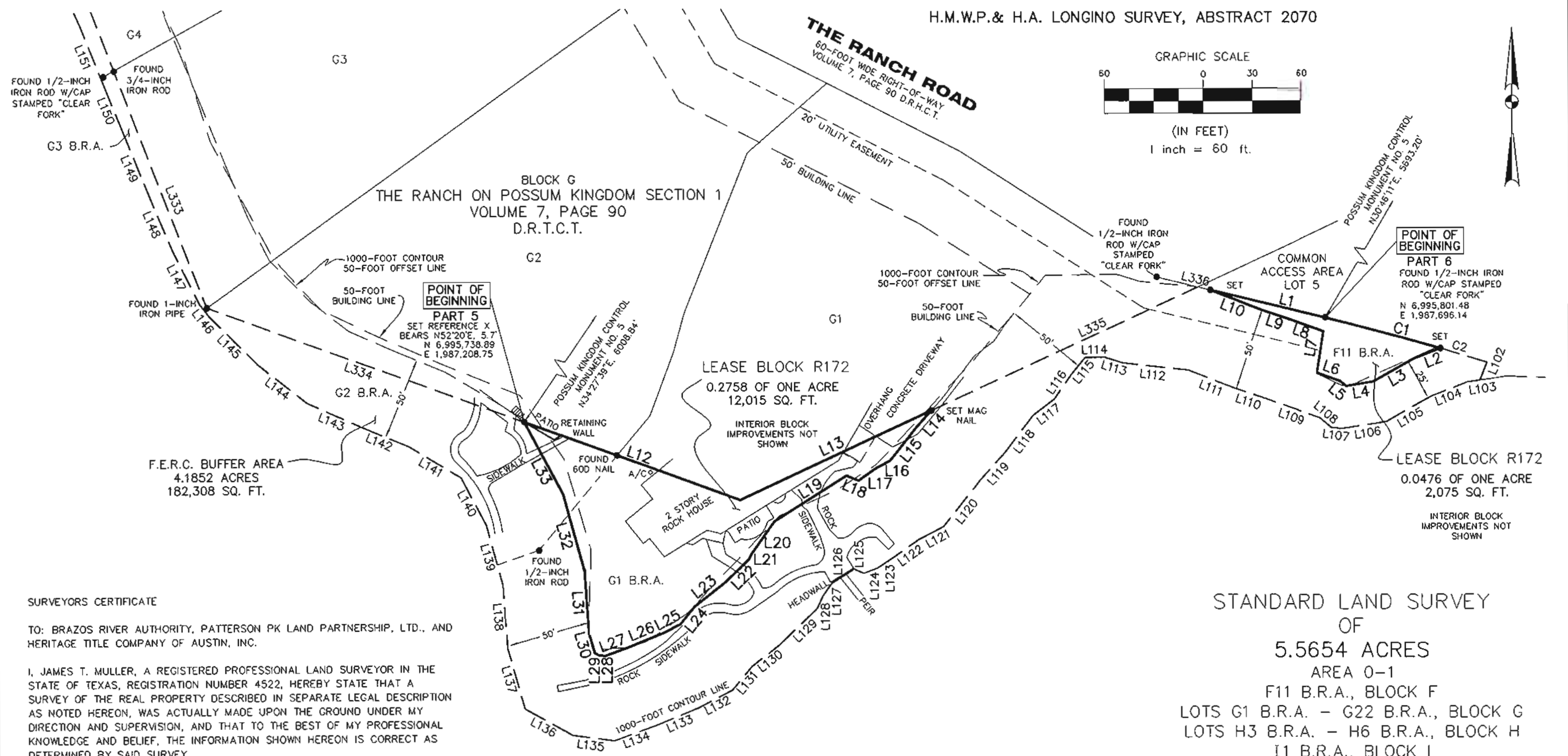
● = LEASE CORNER MARKER
"AS NOTED"

F.E.R.C. BUFFER AREA
4.1852 ACRES
182,308 SQ. FT.

F.M. HARRIS SURVEY, ABSTRACT 248

POSSUM KINGDOM LAKE

THE BRAZOS RIVER CONSERVATION
AND RECLAMATION DISTRICT
TRACT 2-1-45
VOLUME 182, PAGE 297
D.R.P.P.C.T.



SURVEYORS CERTIFICATE

TO: BRAZOS RIVER AUTHORITY, PATTERSON PK LAND PARTNERSHIP, LTD., AND HERITAGE TITLE COMPANY OF AUSTIN, INC.

I, JAMES T. MULLER, A REGISTERED PROFESSIONAL LAND SURVEYOR IN THE STATE OF TEXAS, REGISTRATION NUMBER 4522, HEREBY STATE THAT A SURVEY OF THE REAL PROPERTY DESCRIBED IN SEPARATE LEGAL DESCRIPTION AS NOTED HEREON, WAS ACTUALLY MADE UPON THE GROUND UNDER MY DIRECTION AND SUPERVISION, AND THAT TO THE BEST OF MY PROFESSIONAL KNOWLEDGE AND BELIEF, THE INFORMATION SHOWN HEREON IS CORRECT AS DETERMINED BY SAID SURVEY.

THIS SURVEY SUBSTANTIALLY COMPLIES WITH THE CURRENT TEXAS SOCIETY OF PROFESSIONAL SURVEYORS STANDARDS AND SPECIFICATIONS FOR A CATEGORY 1B, CONDITION II SURVEY.

JAMES T. MULLER
REGISTERED PROFESSIONAL LAND SURVEYOR
TEXAS REGISTRATION NO. 4522

DATE: FEBRUARY 12, 2010



POSSUM KINGDOM LAKE

THE BRAZOS RIVER CONSERVATION AND RECLAMATION DISTRICT
TRACT 2-1-45
VOLUME 182, PAGE 297
D.R.P.C.T.

LEGEND
● = LEASE CORNER MARKER
"AS NOTED"

STANDARD LAND SURVEY OF 5.5654 ACRES

AREA 0-1
F11 B.R.A., BLOCK F
LOTS G1 B.R.A. - G22 B.R.A., BLOCK G
LOTS H3 B.R.A. - H6 B.R.A., BLOCK H
I1 B.R.A., BLOCK I
THE RANCH ON POSSUM KINGDOM LAKE
C.E.P.I. & M. CO. SURVEY, ABSTRACT 138
H.M.W.P. & H.A. LONGINO SURVEY, ABSTRACT 2070
F.M. HARRIS SURVEY, ABSTRACT 247
F.M. HARRIS SURVEY, ABSTRACT 248
PALO PINTO COUNTY, TEXAS



AECOM USA GROUP, INC.
1200 SUMMIT AVENUE, SUITE 600
FORT WORTH, TEXAS 76102
WWW.AECOM.COM
817.698.6770

NO PART OR PARTS OF THIS DRAWING MAY BE REPRODUCED OR TRANSMITTED IN ANY WAY OR FORM (ELECTRONIC, MECHANICAL, PHOTOCOPYING, OR OTHERWISE) WITHOUT THE EXPRESS WRITTEN PERMISSION OF AECOM

S:\Surveyor\Projects\60052528\3.0 Ref Docs\Drafting\Blocks\R172\60052528 R172B.dwg 2/18/2010 7:38:48 AM CST