

VICINITY MAP
NOT TO SCALE

CURVE TABLE					
CURVE	LENGTH	DELTA	RADIUS	CHORD BEARING	CHORD
C1	22.89'	52°27'52"	25.00'	S81°22'16"E	22.10'
C2	6.54'	81°27'34"	4.60'	S66°42'45"E	6.00'

- LEGEND
- = LEASE CORNER MARKER
"AS NOTED"
 - OH = OVERHEAD LINES
 - = POWER POLE

ACREAGE TABLE
 LEASE BLOCK: 4.6858 ACRES
 F.E.R.C. BUFFER AREA: 0.8215 OF ONE ACRE
 SURVEY BLOCK: 5.5073 ACRES TOTAL

NOTES:

- BEARINGS AND COORDINATES SHOWN HEREON ARE BASED ON THE NORTH AMERICAN DATUM OF 1983, TEXAS COORDINATE SYSTEM, NORTH CENTRAL ZONE (4202).
- 1,000-FOOT CONTOUR ELEVATION OF POSSUM KINGDOM LAKE IS DETERMINED BASED ON MEASUREMENTS FROM THE TOP OF THE EXISTING SPILLWAY CREST GATES AT THE MORRIS SHEPPARD DAM BEING AT ELEVATION 1,000- FEET ABOVE MEAN SEA LEVEL AS NOTED IN FEDERAL POWER COMMISSION REPORT PROJECT NO. 1490 - TEXAS ON JUNE 2, 1938.
- SET = 5/8" IRON ROD W/CAP STAMPED "AECOM" SET; D.R.P.P.C.T.= DEED RECORDS, PALO PINTO COUNTY, TEXAS; P.R.P.P.C.T.= PLAT RECORDS, PALO PINTO COUNTY, TEXAS; F.E.R.C.= FEDERAL ENERGY REGULATORY COMMISSION; J.R.P.P.C.T.= JUDGEMENT RECORDS, PALO PINTO COUNTY, TEXAS.
- METES AND BOUNDS DESCRIPTIONS TO ACCOMPANY THIS SURVEY.
- LOCATION OF ROAD PROVIDED BY LINK FIELD SERVICES, DATED OCTOBER 21, 2009, AS SHOWN SHADED HEREON.

SURVEYORS CERTIFICATE

TO: BRAZOS RIVER AUTHORITY, PATTERSON PK LAND PARTNERSHIP, LTD., AND HERITAGE TITLE COMPANY OF AUSTIN, INC.

I, MUNIR ODHWANI, A REGISTERED PROFESSIONAL LAND SURVEYOR IN THE STATE OF TEXAS, REGISTRATION NUMBER 5996, HEREBY STATE THAT A SURVEY OF THE REAL PROPERTY DESCRIBED IN SEPARATE LEGAL DESCRIPTION AS NOTED HEREON, WAS ACTUALLY MADE UPON THE GROUND UNDER MY DIRECTION AND SUPERVISION, AND THAT TO THE BEST OF MY PROFESSIONAL KNOWLEDGE AND BELIEF, THE INFORMATION SHOWN HEREON IS CORRECT AS DETERMINED BY SAID SURVEY.

THIS SURVEY SUBSTANTIALLY COMPLIES WITH THE CURRENT TEXAS SOCIETY OF PROFESSIONAL SURVEYORS STANDARDS AND SPECIFICATIONS FOR A CATEGORY 1B, CONDITION II SURVEY.

Munir Odhwani
 MUNIR ODHWANI
 REGISTERED PROFESSIONAL LAND SURVEYOR
 TEXAS REGISTRATION NO. 5996



DATE: FEBRUARY 19, 2010

LINE TABLE		
LINE	BEARING	DISTANCE
L1	N14°10'39"E	19.15'
L2	N12°09'50"W	10.94'
L3	N21°53'02"E	15.08'
L4	N31°36'31"E	20.84'
L5	N34°34'32"E	30.04'
L6	N36°25'05"E	20.97'
L7	N64°32'48"E	17.26'
L8	N74°40'48"E	17.06'
L9	N50°28'45"E	30.68'
L10	N52°35'29"E	24.08'
L11	N61°26'31"E	18.08'
L12	N75°15'39"E	18.60'
L13	N60°24'56"E	40.96'
L14	N65°51'59"E	30.76'
L15	N78°44'25"E	33.66'
L16	N68°04'57"E	43.18'
L17	N62°19'15"E	27.09'
L18	N69°58'31"E	25.69'
L19	N68°53'53"E	31.95'
L20	N72°50'30"E	35.11'
L21	N76°50'27"E	19.96'
L22	N76°31'37"E	24.88'
L23	N79°34'06"E	44.75'
L24	N28°31'56"E	31.33'
L25	N26°33'50"E	18.85'
L26	N58°44'25"E	22.58'
L27	N68°55'31"E	17.66'
L28	N57°57'35"E	34.62'
L29	S89°37'22"E	9.42'
L30	N72°38'47"E	35.26'
L31	N67°29'20"E	29.60'
L32	N73°12'34"E	35.55'
L33	N71°28'00"E	38.09'
L34	N80°41'45"E	30.86'
L35	N81°14'45"E	18.79'
L36	S55°08'20"E	11.24'
L37	N72°23'48"E	28.19'
L38	S86°07'41"E	22.75'
L39	S67°54'51"E	19.86'
L40	N81°58'16"E	20.65'
L41	N87°57'59"E	14.58'
L42	S40°33'20"E	6.03'
L43	N84°03'53"E	30.80'
L44	N58°55'41"E	28.98'
L45	N44°28'28"E	24.72'

LINE TABLE		
LINE	BEARING	DISTANCE
L46	N52°02'48"E	9.78'
L47	N89°43'06"E	2.04'
L48	S42°39'57"E	10.93'
L49	S53°30'10"E	35.13'
L50	S89°58'46"E	38.80'
L51	N84°10'53"E	26.52'
L52	N76°43'36"E	31.90'
L53	N86°07'20"E	22.06'
L54	S88°38'06"E	26.96'
L55	S79°47'10"E	26.43'
L56	N76°49'24"E	22.47'
L57	N78°47'48"E	23.23'
L58	S20°51'12"E	69.55'
L59	N35°11'28"W	40.14'
L60	N21°53'02"E	23.43'
L61	N31°36'31"E	23.61'
L62	N34°34'32"E	31.09'
L63	N36°25'05"E	27.64'
L64	N64°32'48"E	25.74'
L65	N74°40'48"E	13.92'
L66	N50°28'45"E	25.79'
L67	N52°35'29"E	26.47'
L68	N61°26'31"E	23.04'
L69	N75°15'39"E	18.37'
L70	N60°24'56"E	38.90'
L71	N65°51'59"E	34.77'
L72	N78°44'25"E	34.15'
L73	N68°04'57"E	39.59'
L74	N62°19'15"E	27.51'
L75	N69°58'31"E	27.13'
L76	N68°53'53"E	32.58'
L77	N72°50'30"E	36.85'
L78	N76°50'27"E	20.76'
L79	N76°31'37"E	25.48'
L80	N79°34'06"E	33.48'
L81	N28°31'56"E	18.96'
L82	N26°33'50"E	25.63'
L83	N58°44'25"E	32.02'
L84	N68°55'31"E	17.49'
L85	N57°57'35"E	39.49'
L86	N72°33'28"E	7.58'
L87	N72°38'47"E	30.29'
L88	N67°29'20"E	29.72'
L89	N73°12'34"E	36.42'
L90	N71°28'00"E	39.73'

LINE TABLE		
LINE	BEARING	DISTANCE
L91	N80°41'45"E	33.00'
L92	N81°14'45"E	19.45'
L93	S87°57'11"E	12.04'
L94	S55°08'20"E	17.98'
L95	N72°23'48"E	32.93'
L96	S86°07'41"E	31.50'
L97	S67°54'51"E	17.14'
L98	N81°58'16"E	15.23'
L99	N87°57'59"E	27.94'
L100	S40°33'20"E	4.96'
L101	N84°03'53"E	12.10'
L102	N58°52'40"E	20.34'
L103	N44°28'28"E	23.11'
L104	N52°02'48"E	19.96'
L105	N89°43'06"E	21.60'
L106	S42°39'57"E	19.59'
L107	S53°30'10"E	24.52'
L108	S89°58'46"E	29.29'
L109	N84°10'53"E	23.62'
L110	N76°43'36"E	32.32'
L111	N86°07'20"E	25.26'
L112	S88°38'06"E	30.04'
L113	S79°47'10"E	23.19'
L114	N76°49'24"E	17.73'
L115	N78°47'48"E	19.41'
L116	S20°51'12"E	25.36'

STANDARD LAND SURVEY
 OF
 5.5073 ACRES
 SITUATED IN TRACT 49-1-15
 AREA NL, LOTS 1-2, 2A & 3-7
 POSSUM KINGDOM LAKE
 JOHN MONTGOMERY SURVEY
 ABSTRACT 2134
 PALO PINTO COUNTY, TEXAS

AECOM

AECOM USA GROUP, INC.
 1200 SUMMIT AVENUE, SUITE 600
 FORT WORTH, TEXAS 76102
 WWW.AECOM.COM
 817.698.6770

POSSUM KINGDOM LAKE MANHOLE
 THE BRAZOS RIVER CONSERVATION
 AND RECLAMATION DISTRICT
 TRACT 49-1-15
 CALLED 55.15 ACRES
 VOLUME 180, PAGE 177
 D.R.P.P.C.T.

F.E.R.C. BUFFER AREA
 0.8215 OF ONE ACRE
 35,783 SQ. FT.

LOT 2
 4.6858 ACRES
 204,115 SQ. FT.
 LEASE BLOCK R156
 AREA: NL

S. D. WILLIAMSON SURVEY
 ABSTRACT 1000

WILLIAM INEZ
 WILLIAMSON HEGGIE
 VOLUME 1190, PAGE 66
 D.R.P.P.C.T.

POINT OF BEGINNING

FOUND 5/8-INCH
 IRON ROD
 N 7,045,831.85
 E 1,991,755.44

THE BRAZOS RIVER CONSERVATION
 AND RECLAMATION DISTRICT
 TRACT 49-1-15
 CALLED 55.15 ACRES
 VOLUME 180, PAGE 177
 D.R.P.P.C.T.

STANDARD LAND SURVEY
 OF
5.5073 ACRES
 SITUATED IN TRACT 49-1-15
 AREA NL, LOTS 1-2, 2A & 3-7
 POSSUM KINGDOM LAKE
 JOHN MONTGOMERY SURVEY
 ABSTRACT 2134
 PALO PINTO COUNTY, TEXAS

AECOM

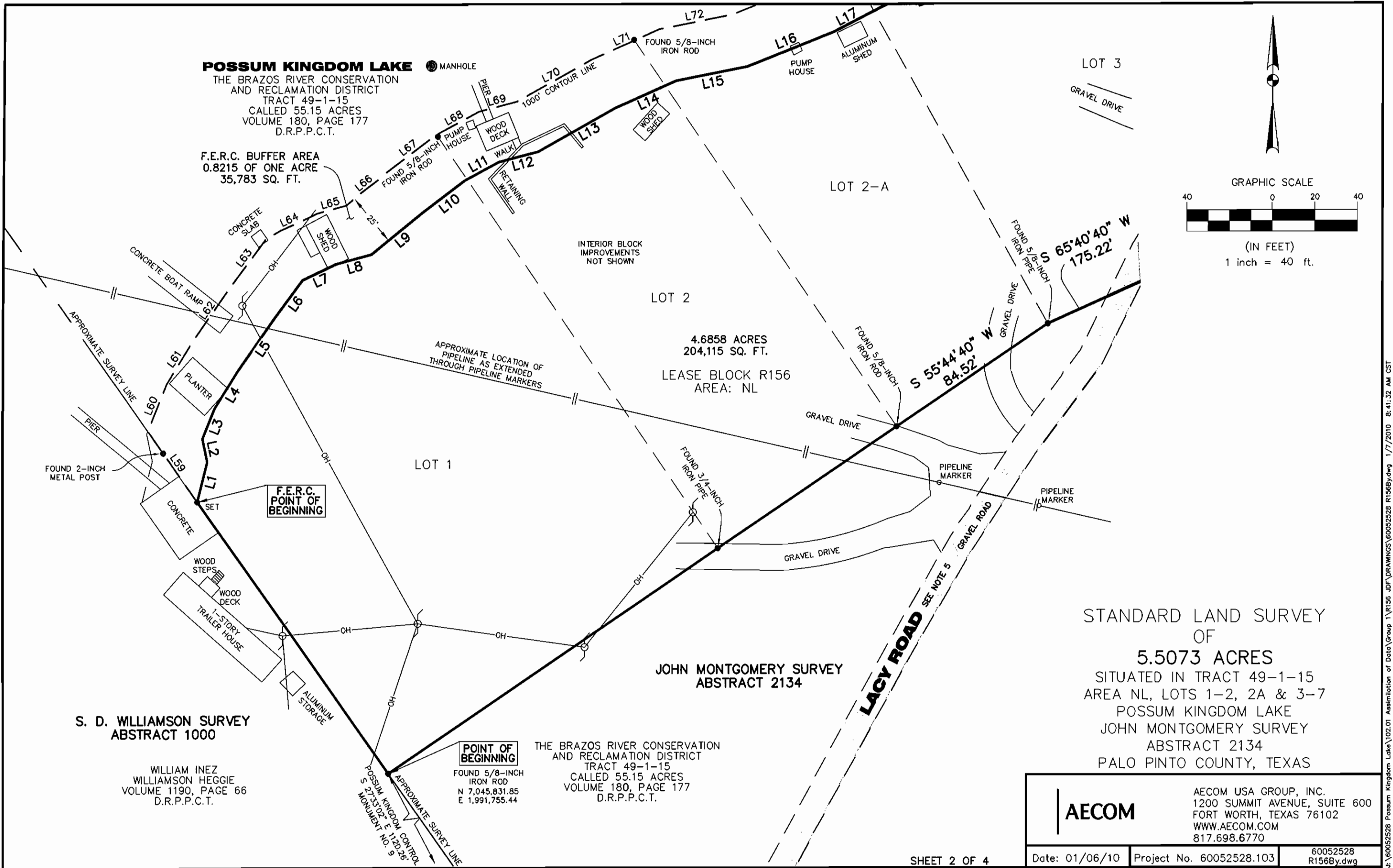
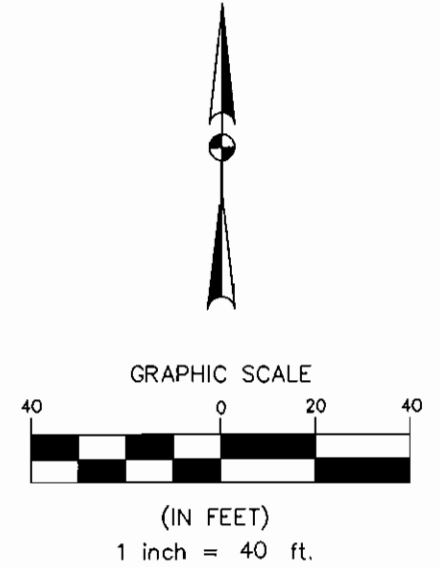
AECOM USA GROUP, INC.
 1200 SUMMIT AVENUE, SUITE 600
 FORT WORTH, TEXAS 76102
 WWW.AECOM.COM
 817.698.6770

SHEET 2 OF 4

Date: 01/06/10

Project No. 60052528.103

60052528
 R156By.dwg



POSSUM KINGDOM LAKE
 THE BRAZOS RIVER CONSERVATION
 AND RECLAMATION DISTRICT
 TRACT 49-1-15
 CALLED 55.15 ACRES
 VOLUME 180, PAGE 177
 D.R.P.P.C.T.

F.E.R.C. BUFFER AREA
 0.8215 OF ONE ACRE
 35,783 SQ. FT.

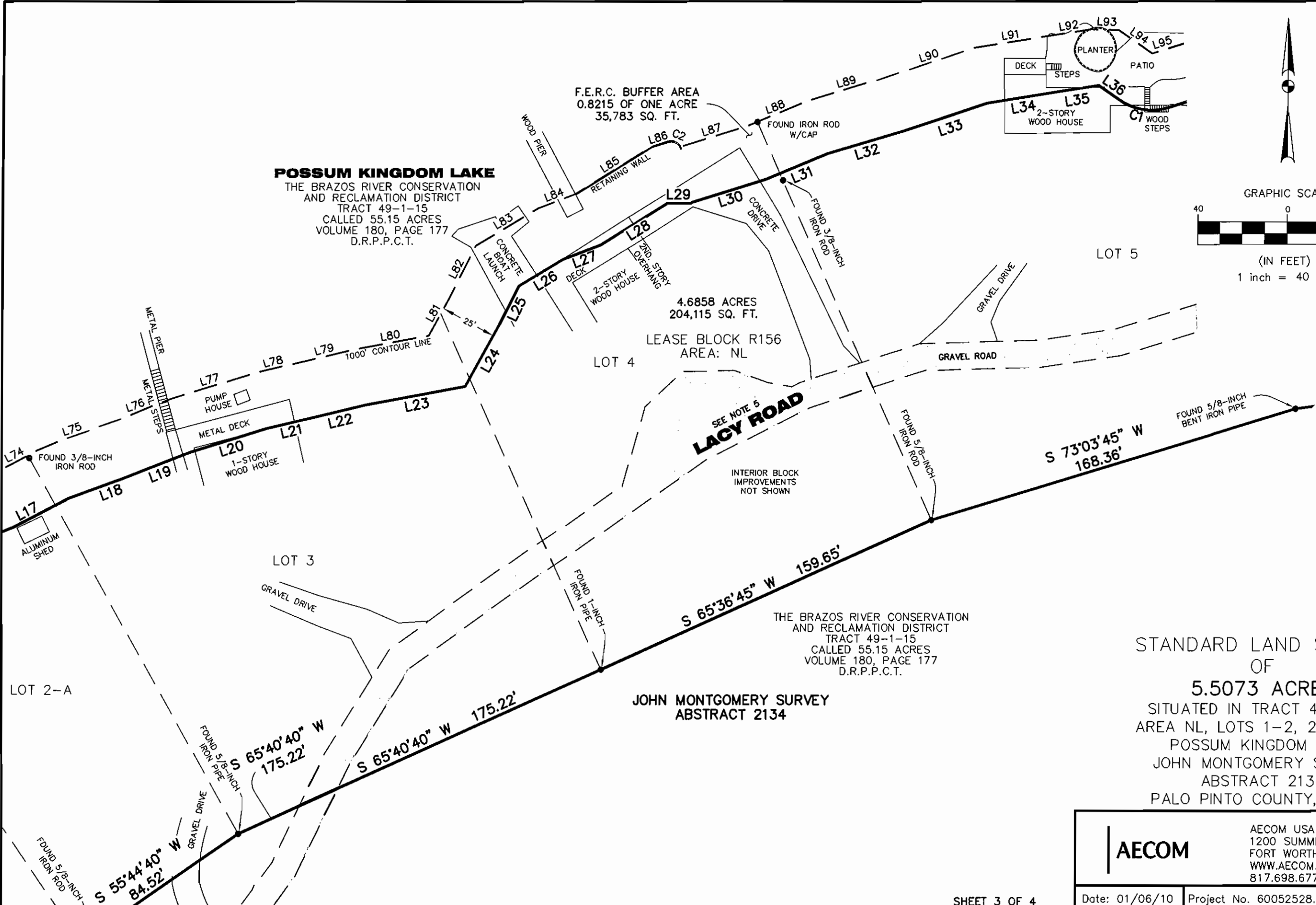
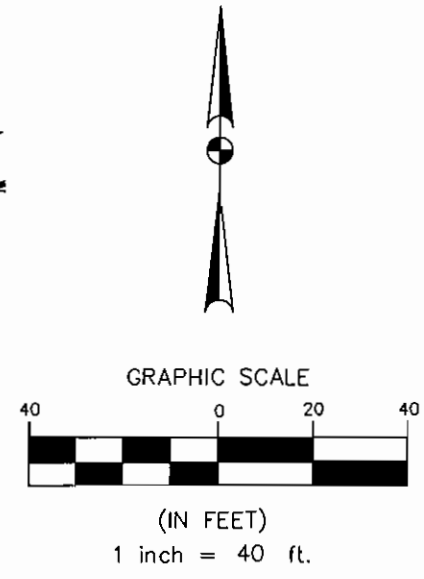
4.6858 ACRES
 204,115 SQ. FT.

LEASE BLOCK R156
 AREA: NL

THE BRAZOS RIVER CONSERVATION
 AND RECLAMATION DISTRICT
 TRACT 49-1-15
 CALLED 55.15 ACRES
 VOLUME 180, PAGE 177
 D.R.P.P.C.T.

JOHN MONTGOMERY SURVEY
 ABSTRACT 2134

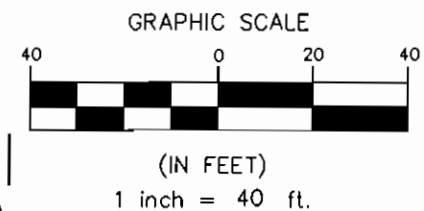
STANDARD LAND SURVEY
 OF
5.5073 ACRES
 SITUATED IN TRACT 49-1-15
 AREA NL, LOTS 1-2, 2A & 3-7
 POSSUM KINGDOM LAKE
 JOHN MONTGOMERY SURVEY
 ABSTRACT 2134
 PALO PINTO COUNTY, TEXAS



AECOM	AECOM USA GROUP, INC. 1200 SUMMIT AVENUE, SUITE 600 FORT WORTH, TEXAS 76102 WWW.AECOM.COM 817.698.6770	
	Date: 01/06/10	Project No. 60052528.103

NO PART OR PARTS OF THIS DRAWING MAY BE REPRODUCED OR RETRANSMITTED IN ANY WAY OR FORM (ELECTRONIC, MECHANICAL, PHOTOCOPIING, OR OTHERWISE) WITHOUT THE EXPRESS WRITTEN PERMISSION OF AECOM.

J:\60052528 Possum Kingdom Lake\102.01 Assimilation of Data\Group 1\R156.dwg DRAWINGS\60052528 R156By.dwg 1/7/2010 8:41:32 AM CST



POSSUM KINGDOM LAKE
 THE BRAZOS RIVER CONSERVATION
 AND RECLAMATION DISTRICT
 TRACT 49-1-15
 CALLED 55.15 ACRES
 VOLUME 180, PAGE 177
 D.R.P.P.C.T.

F.E.R.C. BUFFER AREA
 0.8215 OF ONE ACRE
 35,783 SQ. FT.

4.6858 ACRES
 204,115 SQ. FT.

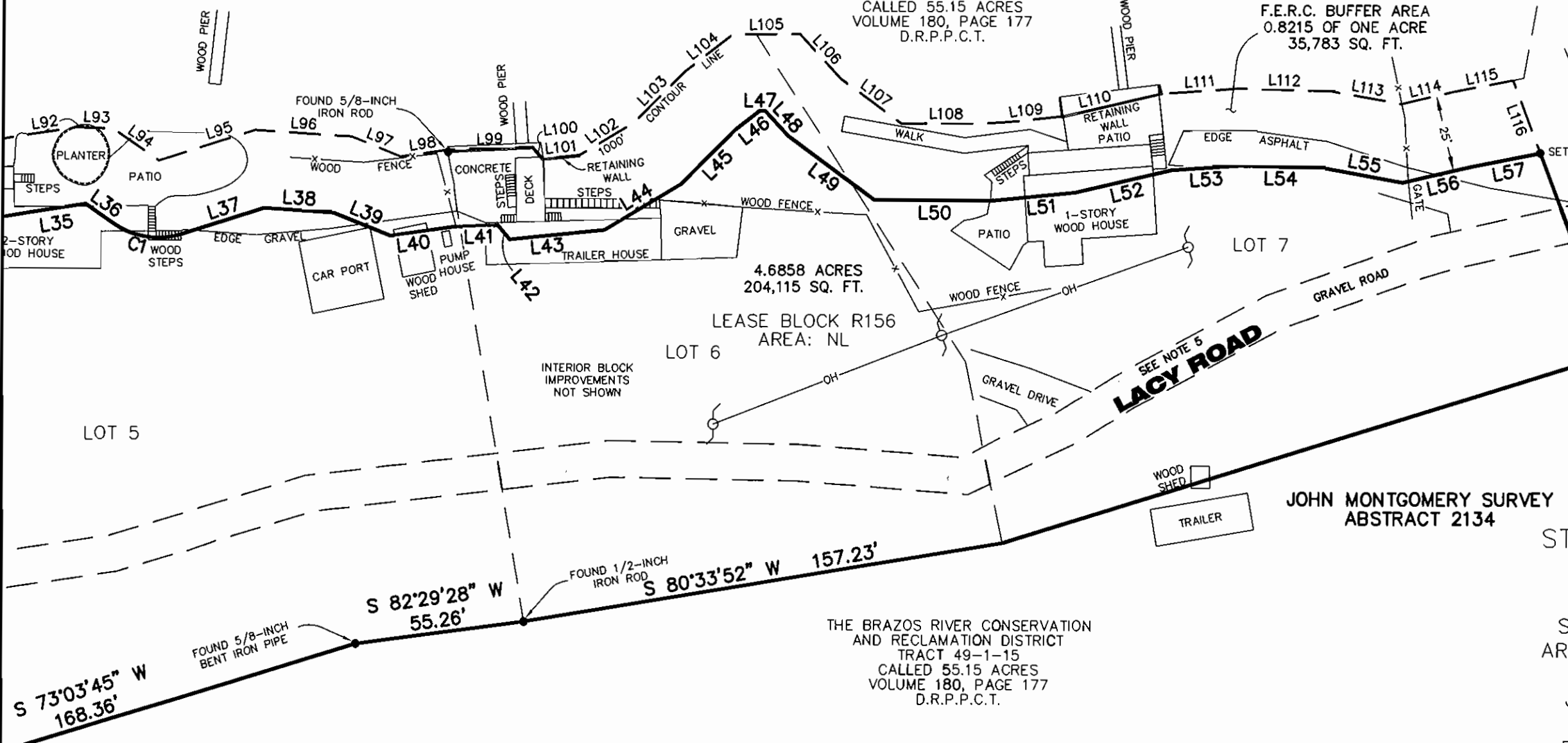
LEASE BLOCK R156
 AREA: NL

MOSES G. LEMLEY SURVEY
 ABSTRACT 2133

JOHN MONTGOMERY SURVEY
 ABSTRACT 2134

STANDARD LAND SURVEY OF
 5.5073 ACRES
 SITUATED IN TRACT 49-1-15
 AREA NL, LOTS 1-2, 2A & 3-7
 POSSUM KINGDOM LAKE
 JOHN MONTGOMERY SURVEY
 ABSTRACT 2134
 PALO PINTO COUNTY, TEXAS

THE BRAZOS RIVER CONSERVATION
 AND RECLAMATION DISTRICT
 TRACT 49-1-15
 CALLED 55.15 ACRES
 VOLUME 180, PAGE 177
 D.R.P.P.C.T.



S 73°03'45" W
 168.36'

FOUND 5/8-INCH
 BENT IRON PIPE

S 82°29'28" W
 55.26'

FOUND 1/2-INCH
 IRON ROD

S 80°33'52" W
 157.23'

AECOM

AECOM USA GROUP, INC.
 1200 SUMMIT AVENUE, SUITE 600
 FORT WORTH, TEXAS 76102
 WWW.AECOM.COM
 817.698.6770