

VICINITY MAP NOT TO SCALE

LINE	BEARING	DISTANCE
L1	S15°07'45"W	29.92'
L2	S17°19'37"E	32.36'
L3	S66°39'31"W	8.29'
L4	S75°35'04"W	16.05'
L5	S80°49'03"W	13.24'
L6	S75°26'09"W	15.84'
L7	S80°32'46"W	8.64'
L8	N50°24'04"W	13.83'
L9	N85°23'56"W	37.93'
L10	S84°17'31"W	24.94'
L11	S26°20'26"W	43.25'
L12	S01°17'45"W	11.12'
L13	S26°03'01"E	18.17'
L14	S47°01'15"W	12.77'
L15	S63°18'49"W	29.03'
L16	S56°41'42"W	96.71'
L17	S63°59'51"W	7.08'
L18	S54°03'11"W	27.91'
L19	S30°15'23"W	22.37'
L20	S52°29'18"W	28.92'
L21	N07°57'37"W	5.32'
L22	S51°09'35"W	69.02'
L23	S49°59'34"W	65.72'
L24	N51°25'15"W	12.10'
L25	S31°22'01"W	11.41'
L26	S10°02'28"W	17.60'
L27	S23°14'23"W	16.06'

LINE	BEARING	DISTANCE
L28	S31°08'43"W	23.12'
L29	S10°39'10"W	12.92'
L30	S06°37'49"E	9.02'
L31	S39°47'40"W	13.04'
L32	S22°08'09"W	24.28'
L33	S24°35'40"W	16.63'
L34	S31°42'26"W	12.37'
L35	S36°25'24"W	19.38'
L36	S35°31'58"W	39.03'
L37	S16°32'03"W	19.13'
L38	S36°06'27"W	9.00'
L39	S45°35'20"W	15.31'
L40	S35°29'27"W	25.26'
L41	S14°18'17"W	20.52'
L42	S29°38'03"W	15.72'
L43	S27°35'50"W	41.30'
L44	S20°56'37"W	46.88'
L45	S26°33'56"W	24.37'
L46	S18°42'58"W	16.75'
L47	S30°01'11"W	28.22'
L48	S40°24'00"W	34.41'
L49	N46°18'12"W	49.07'
L50	N25°26'41"W	49.24'
L51	N21°51'53"W	52.99'
L52	N12°03'38"W	124.67'
L53	N07°56'12"E	6.12'
L54	N30°59'45"E	24.69'
L55	N20°36'42"E	5.02'
L56	N32°51'00"E	2.40'
L57	N19°02'40"E	5.78'
L58	N63°25'43"E	11.10'
L59	N05°50'27"E	12.66'
L60	N16°50'12"E	25.35'
L61	N14°59'03"E	84.25'
L62	N32°39'58"E	28.25'
L63	N59°14'58"E	13.23'
L64	N84°10'51"E	19.63'
L65	S86°10'59"E	23.25'
L66	S69°58'15"E	13.02'
L67	N31°12'47"W	11.11'
L68	N48°01'46"W	8.37'
L69	N24°52'49"W	8.79'
L70	N58°05'45"E	45.98'

LINE	BEARING	DISTANCE
L71	N53°31'42"E	25.99'
L72	N61°28'35"E	26.61'
L73	N57°06'39"E	47.84'
L74	N73°35'23"E	7.61'
L75	N62°45'01"E	33.33'
L76	N62°32'05"E	44.18'
L77	N64°10'00"E	26.11'
L78	N80°29'15"E	11.61'
L79	S81°14'52"E	23.09'
L80	N64°12'25"E	24.42'
L81	N58°39'16"E	21.58'
L82	N63°49'18"E	35.74'
L83	N45°33'31"E	16.56'
L84	N69°25'36"E	12.28'
L85	N59°51'28"E	13.06'
L86	N50°55'36"E	12.27'
L87	N57°57'44"E	51.11'
L88	N54°37'59"E	18.95'
L89	N59°39'30"E	18.31'
L90	N57°51'31"E	34.40'
L91	N63°38'31"E	26.45'
L92	N83°25'00"E	8.76'
L93	N73°18'50"E	17.74'
L94	N67°03'47"E	51.33'
L95	N50°28'35"E	32.51'
L96	N67°34'04"E	33.37'
L97	S34°30'00"E	37.89'
L98	S34°30'00"E	32.81'
L99	S15°07'45"W	1.39'
L100	S17°19'37"E	34.57'
L101	S10°22'23"E	5.20'
L102	S66°39'31"W	23.99'
L103	S75°35'04"W	19.15'
L104	S80°49'03"W	13.21'
L105	S75°26'09"W	15.78'
L106	S80°32'46"W	14.07'
L107	N85°18'43"W	10.37'
L108	N09°54'04"E	0.67'
L109	N50°24'04"W	13.17'
L110	N85°23'56"W	27.90'
L111	S84°14'37"W	22.56'
L112	S26°20'26"W	37.40'
L113	S26°03'01"E	15.03'

LINE	BEARING	DISTANCE
L114	S47°01'15"W	38.02'
L115	S63°18'49"W	24.67'
L116	N70°39'44"W	6.32'
L117	S56°41'42"W	111.98'
L118	N32°42'02"W	5.16'
L119	S63°59'51"W	4.90'
L120	S54°03'11"W	20.47'
L121	S30°15'23"W	14.98'
L122	S39°33'07"E	11.89'
L123	S50°38'25"W	28.93'
L124	N39°13'37"W	10.17'
L125	S52°29'18"W	11.54'
L126	S33°52'44"E	10.70'
L127	S51°09'35"W	88.31'
L128	S49°59'34"W	59.99'
L129	S48°40'52"W	45.56'
L130	N43°20'53"W	4.21'
L131	N11°25'22"E	15.34'
L132	N20°52'23"W	10.22'
L133	N51°25'15"W	9.73'
L134	S31°22'01"W	6.70'
L135	S10°02'28"W	15.78'
L136	S23°14'23"W	20.68'
L137	S31°08'43"W	20.33'
L138	S10°39'10"W	4.60'
L139	S06°37'49"E	15.94'
L140	S39°47'40"W	19.88'
L141	S22°08'09"W	20.93'
L142	S24°35'40"W	18.72'
L143	S31°42'26"W	14.95'
L144	S36°25'24"W	20.41'
L145	S53°46'18"E	8.17'
L146	S31°18'31"W	29.97'
L147	S36°24'56"W	24.99'
L148	S16°32'03"W	14.75'
L149	S46°54'30"E	16.92'
L150	S33°47'57"W	10.92'
L151	N56°12'03"W	3.95'
L152	S36°06'27"W	4.12'
L153	S55°08'57"E	4.00'
L154	S34°51'03"W	23.62'
L155	N67°26'19"W	14.53'
L156	S45°35'20"W	13.10'

LINE	BEARING	DISTANCE
L157	S35°29'27"W	18.37'
L158	S14°18'17"W	19.21'
L159	S29°38'03"W	18.64'
L160	S27°35'50"W	39.40'
L161	S20°56'37"W	46.65'
L162	S26°33'56"W	23.88'
L163	S18°42'58"W	17.51'
L164	S30°01'11"W	32.96'
L165	S40°24'00"W	42.84'
L166	S27°49'57"E	17.80'
L167	S42°33'41"E	29.77'
L168	S39°32'58"W	7.59'
L169	N57°07'19"W	1.76'
L170	N50°20'06"W	68.29'
L171	N46°18'12"W	56.27'
L172	N25°26'41"W	54.62'
L173	N21°51'53"W	55.91'
L174	N12°03'38"W	117.33'
L175	N07°57'37"W	12.40'
L176	N07°56'12"E	14.71'
L177	N30°59'45"E	27.51'
L178	N20°36'42"E	5.43'
L179	N32°51'00"E	8.49'
L180	N67°13'30"W	1.42'
L181	N23°58'36"W	1.63'
L182	N62°29'22"W	3.77'
L183	N49°23'06"W	3.18'
L184	N15°00'24"E	16.51'
L185	N63°25'43"E	20.66'
L186	N05°50'27"E	38.19'
L187	S74°39'24"E	4.41'
L188	N16°50'12"E	4.94'
L189	N73°36'21"W	5.09'
L190	N14°59'06"E	110.82'
L191	N30°31'07"E	15.72'
L192	S60°28'49"E	2.93'
L193	N32°39'58"E	3.87'
L194	N56°41'58"W	3.04'
L195	N30°23'42"E	4.53'
L196	N59°14'58"E	31.85'
L197	N84°10'51"E	27.26'
L198	S86°10'59"E	28.92'
L199	S69°58'15"E	20.63'

CURVE	LENGTH	DELTA	RADIUS	CHORD BEARING	CHORD
C1	25.26'	57°54'11"	25.00'	S55°17'31"W	24.20'
C2	18.21'	41°43'49"	25.00'	S77°33'36"W	17.81'
C3	13.16'	30°09'51"	25.00'	S79°04'47"W	13.01'
C4	24.57'	56°19'08"	25.00'	S24°19'44"W	23.60'
C5	42.42'	97°12'46"	25.00'	S79°58'23"W	37.51'
C6	23.48'	53°48'28"	25.00'	S09°31'10"W	22.62'
C7	23.43'	53°42'19"	25.00'	S10°19'07"E	22.58'
C8	24.81'	56°51'10"	25.00'	S74°00'55"W	23.80'
C9	10.83'	37°13'37"	16.67'	N47°41'41"W	10.64'
C10	12.76'	72°46'05"	10.05'	S25°18'04"W	11.92'
C11	43.13'	80°45'02"	30.60'	N03°02'34"W	39.64'
C12	25.13'	57°35'16"	25.00'	N34°38'05"E	24.08'
C13	17.04'	39°03'25"	25.00'	N02°41'30"W	16.71'
C14	74.56'	170°53'24"	25.00'	N54°13'55"E	49.84'
C15	22.78'	52°12'50"	25.00'	N83°13'05"E	22.00'
C16	66.10'	151°28'48"	25.00'	N82°29'34"E	48.46'
C17	19.12'	46°17'38"	23.67'	S04°53'56"E	18.61'
C18	8.67'	12°44'20"	39.00'	S82°33'51"W	8.65'
C19	7.14'	83°18'54"	4.91'	S07°46'05"E	6.53'
C20	9.49'	77°42'38"	7.00'	S73°42'22"W	8.78'
C21	17.68'	24°18'27"	41.67'	N33°25'39"W	17.55'
C22	8.20'	83°54'30"	5.60'	N19°35'39"W	7.49'
C23	4.23'	36°58'00"	6.55'	N03°28'36"W	4.16'
C24	14.77'	13°53'50"	60.90'	N21°33'47"E	14.74'
C25	8.84'	141°06'14"	3.59'	N81°16'30"E	6.77'

ACREAGE TABLE	
LEASE BLOCK:	4.3276 ACRES
F.E.R.C. BUFFER AREA:	1.7508 ACRES
SURVEY BLOCK:	6.0784 ACRES TOTAL

SURVEYORS CERTIFICATE

TO: BRAZOS RIVER AUTHORITY, PATTERSON PK LAND PARTNERSHIP, LTD., AND HERITAGE TITLE COMPANY OF AUSTIN, INC.

I, JAMES T. MULLER, A REGISTERED PROFESSIONAL LAND SURVEYOR IN THE STATE OF TEXAS, REGISTRATION NUMBER 4522, HEREBY STATE THAT A SURVEY OF THE REAL PROPERTY DESCRIBED IN SEPARATE LEGAL DESCRIPTION AS NOTED HEREON, WAS ACTUALLY MADE UPON THE GROUND UNDER MY DIRECTION AND SUPERVISION, AND THAT TO THE BEST OF MY PROFESSIONAL KNOWLEDGE AND BELIEF, THE INFORMATION SHOWN HEREON IS CORRECT AS DETERMINED BY SAID SURVEY.

THIS SURVEY SUBSTANTIALLY COMPLIES WITH THE CURRENT TEXAS SOCIETY OF PROFESSIONAL SURVEYORS STANDARDS AND SPECIFICATIONS FOR A CATEGORY 1B, CONDITION II SURVEY.


 JAMES T. MULLER
 REGISTERED PROFESSIONAL LAND SURVEYOR
 TEXAS REGISTRATION NO. 4522



DATE: FEBRUARY 12, 2010

NOTES:

- 1) BEARINGS AND COORDINATES SHOWN HEREON ARE BASED ON THE NORTH AMERICAN DATUM OF 1983, TEXAS COORDINATE SYSTEM, NORTH CENTRAL ZONE (4202).
- 2) 1,000-FOOT CONTOUR ELEVATION OF POSSUM KINGDOM LAKE IS DETERMINED BASED ON MEASUREMENTS FROM THE TOP OF THE EXISTING SPILLWAY CREST GATES AT THE MORRIS SHEPPARD DAM BEING AT ELEVATION 1,000- FEET ABOVE MEAN SEA LEVEL AS NOTED IN FEDERAL POWER COMMISSION REPORT PROJECT NO. 1490 - TEXAS ON JUNE 2, 1938.
- 3) SET = 5/8" IRON ROD W/CAP STAMPED "AECOM" SET; D.R.P.P.C.T.= DEED RECORDS, PALO PINTO COUNTY, TEXAS; P.R.P.P.C.T.= PLAT RECORDS, PALO PINTO COUNTY, TEXAS; F.E.R.C.= FEDERAL ENERGY REGULATORY COMMISSION; J.R.P.P.C.T.= JUDGEMENT RECORDS, PALO PINTO COUNTY, TEXAS.
- 4) METES AND BOUNDS DESCRIPTIONS TO ACCOMPANY THIS SURVEY.
- 5) LOCATION OF ROAD PROVIDED BY LINK FIELD SERVICES, DATED JANUARY 15, 2010, AS SHOWN SHADED HEREON.

STANDARD LAND SURVEY
 OF
 6.0784 ACRES
 SITUATED IN TRACTS 32-1-48 & 30-1-47
 AREA 12, LOTS 1 - 4, 4-A, 4-B,
 AREA 11-A, LOTS A - L
 POSSUM KINGDOM LAKE
 B.B.B. & C. R.R. Co. SURVEY No. 50,
 ABSTRACT 104
 J. B. BOWNE SURVEY, ABSTRACT 1733
 PALO PINTO COUNTY, TEXAS

	AECOM USA GROUP, INC. 1200 SUMMIT AVENUE, SUITE 600 FORT WORTH, TEXAS 76102 WWW.AECOM.COM 817.698.6770	
	Date: 01/21/10	Project No. 60052528.103

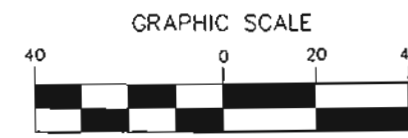
NO PART OR PARTS OF THIS DRAWING MAY BE REPRODUCED OR TRANSMITTED IN ANY WAY OR FORM (ELECTRONIC, MECHANICAL, PHOTOCOPYING, OR OTHERWISE) WITHOUT THE EXPRESS WRITTEN PERMISSION OF AECOM.

S:\Survey\Projects\60052528\3.0 Ref Deca\Drafting\Blocks\154\60052528_R154By.dwg 2/24/2010 1:45:15 PM CST

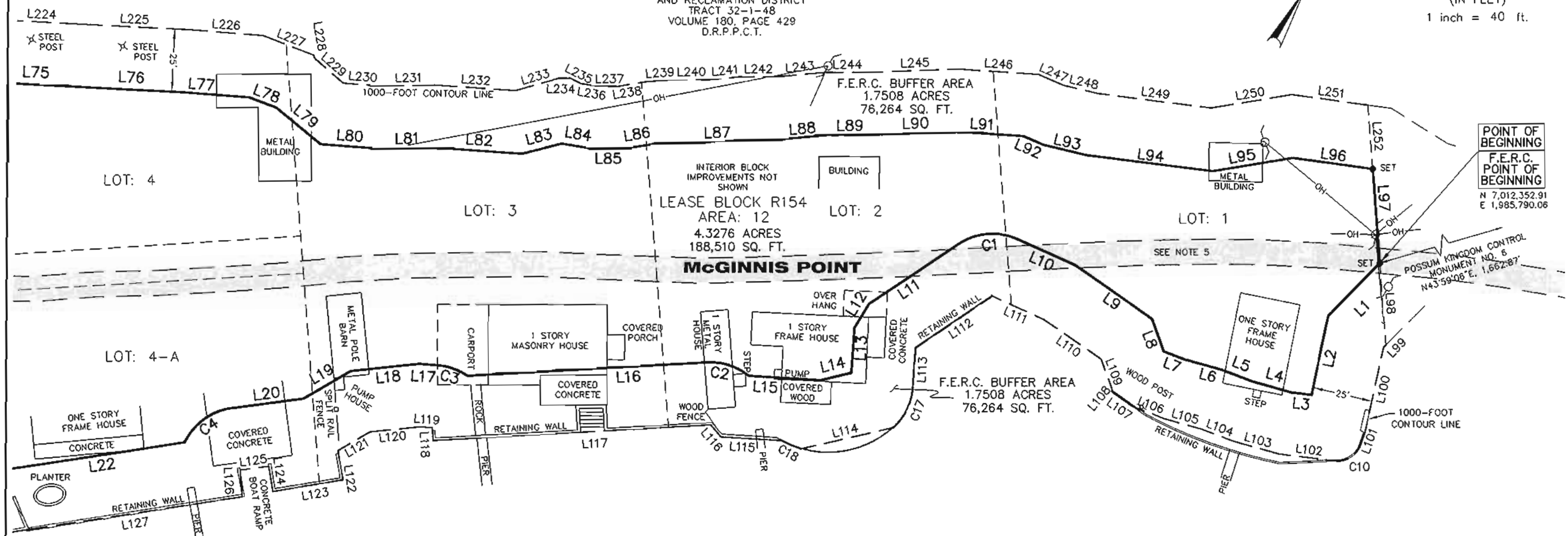
B.B.B. & C. RR CO. SURVEY No. 50
ABSTRACT 104

POSSUM KINGDOM LAKE

THE BRAZOS RIVER CONSERVATION
AND RECLAMATION DISTRICT
TRACT 32-1-48
VOLUME 180, PAGE 429
D.R.P.P.C.T.



(IN FEET)
1 inch = 40 ft.



POSSUM KINGDOM LAKE

THE BRAZOS RIVER CONSERVATION
AND RECLAMATION DISTRICT
TRACT 32-1-48
VOLUME 180, PAGE 429
D.R.P.P.C.T.

STANDARD LAND SURVEY
OF

6.0784 ACRES

SITUATED IN TRACTS 32-1-48 & 30-1-47
AREA 12, LOTS 1 - 4, 4-A, 4-B,
AREA 11-A, LOTS A - L
POSSUM KINGDOM LAKE
B.B.B. & C. R.R. Co. SURVEY No. 50,
ABSTRACT 104
J. B. BOWNE SURVEY, ABSTRACT 1733
PALO PINTO COUNTY, TEXAS

LINE	BEARING	DISTANCE
L225	N62°32'05"E	44.49'
L226	N64°10'00"E	30.05'
L227	N80°29'15"E	22.16'
L228	S39°51'01"E	1.15'
L229	S79°50'54"E	15.37'
L230	N64°12'25"E	15.80'
L231	N58°39'16"E	21.50'
L232	N63°49'18"E	32.54'
L233	N44°08'59"E	18.39'
L234	N61°07'39"E	4.64'
L235	N85°58'54"E	4.50'
L236	N69°25'36"E	6.55'
L237	N59°51'28"E	9.02'
L238	N50°55'36"E	11.85'

LINE	BEARING	DISTANCE
L239	N56°12'28"E	9.80'
L240	N59°47'51"E	15.25'
L241	N54°22'44"E	12.04'
L242	N59°58'37"E	15.33'
L243	N54°37'59"E	18.88'
L244	N59°39'30"E	19.02'
L245	N57°51'31"E	35.27'
L246	N63°38'31"E	32.07'
L247	N83°25'00"E	10.90'
L248	N73°18'50"E	14.16'
L249	N67°03'47"E	46.33'
L250	N50°28'35"E	32.62'
L251	N67°34'04"E	31.78'
L252	S34°30'00"E	25.56'

- LEGEND**
- = LEASE CORNER MARKER "AS NOTED"
 - OH = OVERHEAD LINES
 - ⊙ = WATER METER
 - ∇ = FLAG POLE
 - = TELEPHONE PEDESTAL
 - ⊕ = POWER POLE
 - ⊙ = WATER VALVE
 - ⊕ = IRRIGATION CONTROL VALVE
 - ⊕ = FIRE HYDRANT
 - ⊕ = POST
 - ⊕ = ELECTRIC PEDESTAL

AECOM
AECOM USA GROUP, INC.
1200 SUMMIT AVENUE, SUITE 600
FORT WORTH, TEXAS 76102
WWW.AECOM.COM
817.698.6770

NO PART OR PARTS OF THIS DRAWING MAY BE REPRODUCED OR TRANSMITTED IN ANY WAY OR FORM (ELECTRONIC, MECHANICAL, PHOTOCOPIING, OR OTHERWISE) WITHOUT THE EXPRESS WRITTEN PERMISSION OF AECOM.

S:\Survey\Projects\60052528\3.0 Ref Docs\Drafting\Blocks\R154By.dwg 2/24/2010 1:45:15 PM CST

POSSUM KINGDOM LAKE

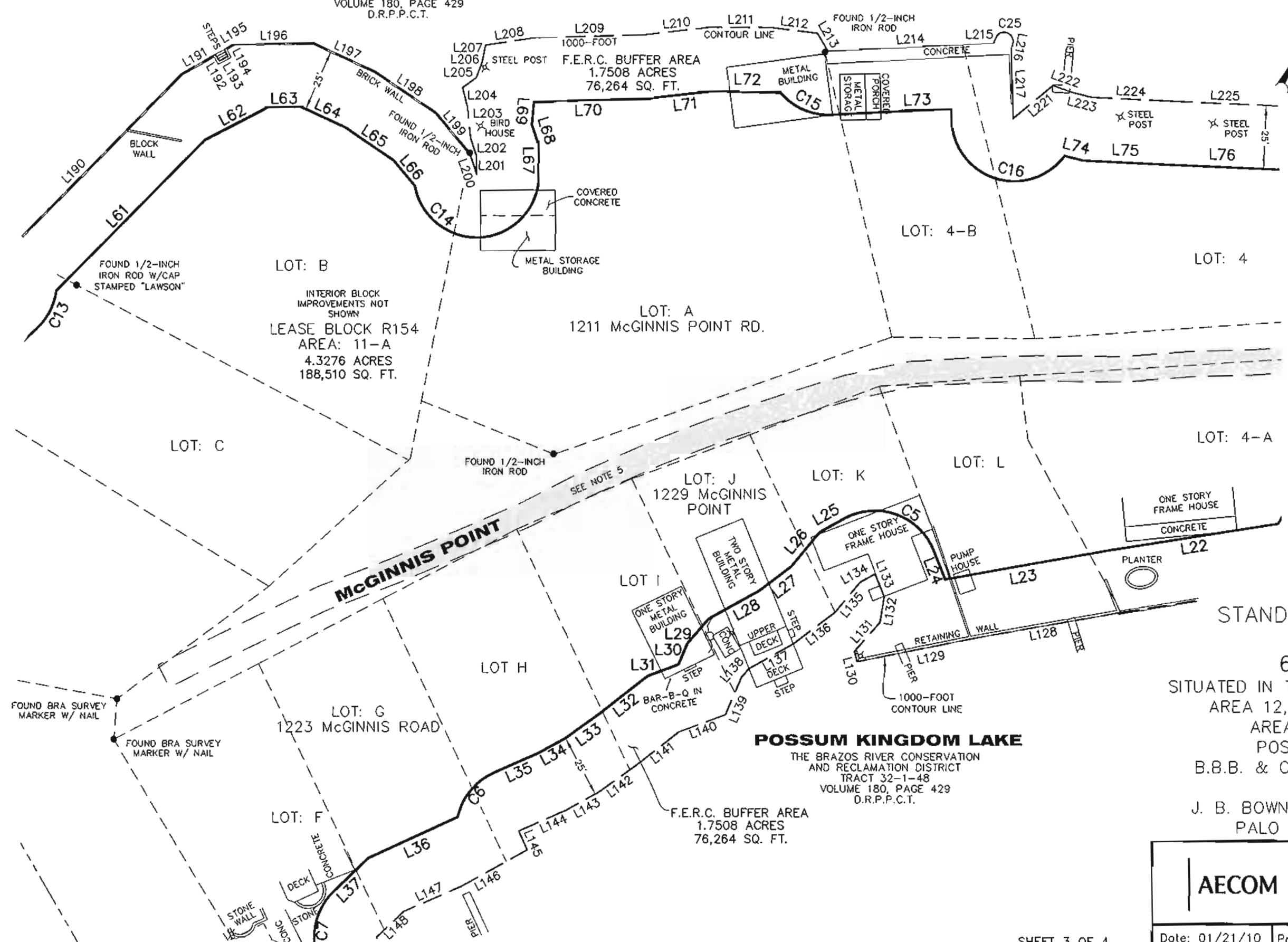
THE BRAZOS RIVER CONSERVATION
AND RECLAMATION DISTRICT
TRACT 32-1-48
VOLUME 180, PAGE 429
D.R.P.P.C.T.

**B.B.B. & C. RR CO. SURVEY No. 50
ABSTRACT 104**



(IN FEET)
1 inch = 40 ft.

LINE	BEARING	DISTANCE
L200	S48°30'00"E	8.94'
L201	N31°12'47"W	7.41'
L202	N48°01'46"W	7.40'
L203	N35°35'08"W	11.82'
L204	N43°50'14"W	8.12'
L205	N24°19'56"E	6.67'
L206	N08°44'29"W	6.45'
L207	N17°59'44"W	6.88'
L208	N51°29'48"E	20.23'
L209	N58°32'27"E	43.53'
L210	N53°31'42"E	26.32'
L211	N60°04'20"E	23.83'
L212	N67°00'51"E	19.09'
L213	S60°42'06"E	8.18'
L214	N57°06'39"E	65.88'
L215	N04°21'33"W	3.22'
L216	S18°43'53"E	3.36'
L217	S31°15'37"E	26.91'
L221	N20°33'57"E	20.44'
L222	N78°57'58"E	8.55'
L223	N73°35'23"E	7.69'
L224	N62°45'01"E	30.91'



STANDARD LAND SURVEY
OF
6.0784 ACRES
SITUATED IN TRACTS 32-1-48 & 30-1-47
AREA 12, LOTS 1 - 4, 4-A, 4-B,
AREA 11-A, LOTS A - L
POSSUM KINGDOM LAKE
B.B.B. & C. R.R. Co. SURVEY No. 50,
ABSTRACT 104
J. B. BOWNE SURVEY, ABSTRACT 1733
PALO PINTO COUNTY, TEXAS

	AECOM USA GROUP, INC. 1200 SUMMIT AVENUE, SUITE 600 FORT WORTH, TEXAS 76102 WWW.AECOM.COM 817.698.6770	
	Date: 01/21/10	Project No. 60052528.103

NO PART OR PARTS OF THIS DRAWING MAY BE REPRODUCED OR TRANSMITTED IN ANY WAY OR FORM (ELECTRONIC, MECHANICAL, PHOTOCOPYING, OR OTHERWISE) WITHOUT THE EXPRESS WRITTEN PERMISSION OF AECOM.

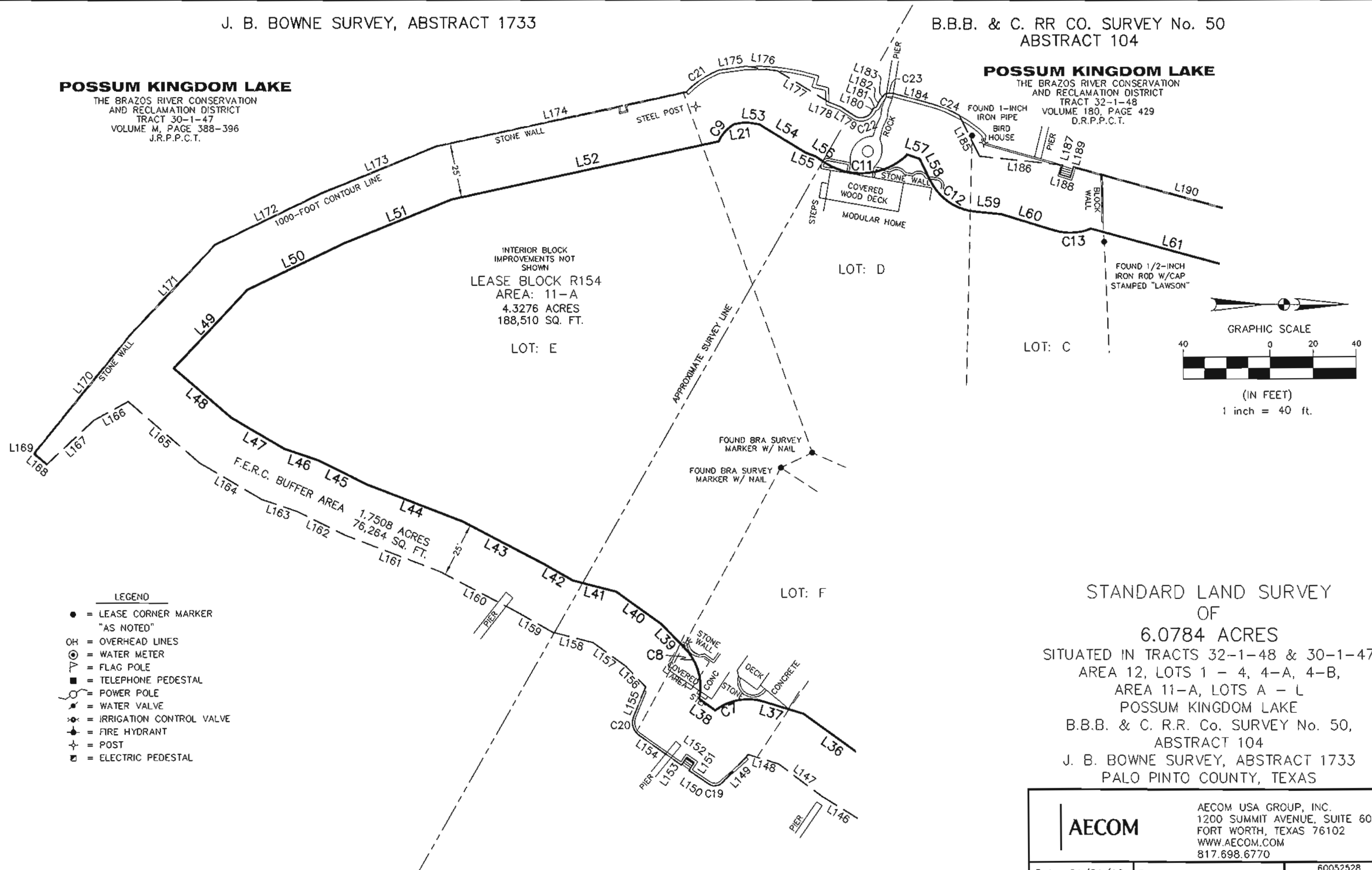
S:\Survey\Projects\60052528\3.0 Ref Docs\Drafting\Blocks\154\60052528_R154By.dwg 2/24/2010 1:45:15 PM CST

POSSUM KINGDOM LAKE

THE BRAZOS RIVER CONSERVATION
AND RECLAMATION DISTRICT
TRACT 30-1-47
VOLUME M, PAGE 388-396
J.R.P.P.C.T.

POSSUM KINGDOM LAKE

THE BRAZOS RIVER CONSERVATION
AND RECLAMATION DISTRICT
TRACT 32-1-48
VOLUME 180, PAGE 429
D.R.P.P.C.T.



INTERIOR BLOCK
IMPROVEMENTS NOT
SHOWN
LEASE BLOCK R154
AREA: 11-A
4.3276 ACRES
188,510 SQ. FT.

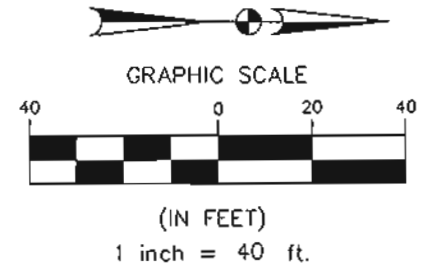
LOT: E

LOT: D

LOT: C

LOT: F

F.E.R.C. BUFFER AREA
1.7508 ACRES
76,264 SQ. FT.



- LEGEND**
- = LEASE CORNER MARKER "AS NOTED"
 - OH = OVERHEAD LINES
 - ⊙ = WATER METER
 - ▽ = FLAG POLE
 - = TELEPHONE PEDESTAL
 - ⊕ = POWER POLE
 - ⊗ = WATER VALVE
 - ⊗ = IRRIGATION CONTROL VALVE
 - ⊕ = FIRE HYDRANT
 - ⊕ = POST
 - ⊕ = ELECTRIC PEDESTAL

STANDARD LAND SURVEY
OF
6.0784 ACRES
SITUATED IN TRACTS 32-1-48 & 30-1-47
AREA 12, LOTS 1 - 4, 4-A, 4-B,
AREA 11-A, LOTS A - L
POSSUM KINGDOM LAKE
B.B.B. & C. R.R. Co. SURVEY No. 50,
ABSTRACT 104
J. B. BOWNE SURVEY, ABSTRACT 1733
PALO PINTO COUNTY, TEXAS

AECOM	AECOM USA GROUP, INC. 1200 SUMMIT AVENUE, SUITE 600 FORT WORTH, TEXAS 76102 WWW.AECOM.COM 817.698.6770	
	Date: 01/21/10	Project No. 60052528.103

NO PART OR PARTS OF THIS DRAWING MAY BE REPRODUCED OR TRANSMITTED IN ANY WAY OR FORM (ELECTRONIC, MECHANICAL, PHOTOCOPIING, OR OTHERWISE) WITHOUT THE EXPRESS WRITTEN PERMISSION OF AECOM.

S:\Survey\Projects\60052528\3.0 Ref Docs\Drafting\Blocks\R154\60052528 R154B.dwg 2/24/2010 1:45:15 PM CST