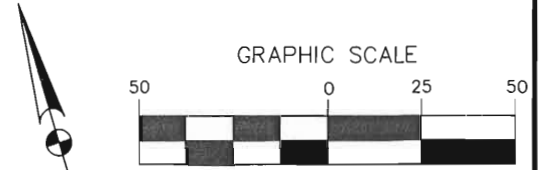


B.B.B. & C. RR CO. SURVEY No. 50
ABSTRACT 104



(IN FEET)
1 inch = 50 ft.

LEGEND

- = LEASE CORNER MARKER "AS NOTED"
- OH = OVERHEAD LINES
- ⊙ = WATER METER
- ∇ = FLAG POLE
- = TELEPHONE PEDESTAL
- = POWER POLE
- ⊗ = WATER VALVE
- ⊕ = IRRIGATION CONTROL VALVE
- ⊙ = FIRE HYDRANT
- ⊕ = POST
- ⊕ = ELECTRIC PEDESTAL
- ⊕ = SIGN
- ⊕ = MAIL BOX

POSSUM KINGDOM LAKE

THE BRAZOS RIVER CONSERVATION AND RECLAMATION DISTRICT
TRACT 32-1-48
VOLUME 180, PAGE 429
D.P.P.C.T.

THE BRAZOS RIVER CONSERVATION AND RECLAMATION DISTRICT
TRACT 32-1-48
VOLUME 180, PAGE 429
D.P.P.C.T.

LOT: 3

LOT: 4

LEASE BLOCK R152
AREA : 11-C
19.7638 ACRES
860,912 SQ. FT.

INTERIOR BLOCK IMPROVEMENTS NOT SHOWN

LOT: 5

LOT: 6

LOT: 7

CURVE	LENGTH	DELTA	RADIUS	CHORD BEARING	CHORD
C1	43.43'	99°31'51"	25.00'	N28°31'05"E	38.17'
C2	34.67'	79°28'01"	25.00'	N40°41'36"E	31.96'
C3	53.90'	123°31'56"	25.00'	N15°08'59"E	44.05'
C4	37.49'	85°55'18"	25.00'	N54°09'00"E	34.07'
C5	34.57'	79°13'37"	25.00'	N20°44'40"W	31.88'
C6	36.42'	83°28'42"	25.00'	N11°48'13"W	33.29'
C7	33.56'	76°54'49"	25.00'	N04°56'35"W	31.10'
C8	36.56'	07°28'55"	280.00'	S00°34'09"E	36.54'
C9	169.28'	19°23'51"	500.00'	S03°22'58"W	168.47'
C10	20.59'	06°33'11"	180.00'	S03°02'22"E	20.58'
C11	28.21'	05°46'23"	280.00'	S03°07'25"W	28.20'
C12	65.31'	16°16'13"	230.00'	S14°08'44"W	65.09'

STANDARD LAND SURVEY
OF
22.1142 ACRES
SITUATED IN TRACT 32-1-48
AREA 11-C, LOTS 3 - 27
POSSUM KINGDOM LAKE
B.B.B. & C. R.R. Co. SURVEY No. 50
ABSTRACT 104
PALO PINTO COUNTY, TEXAS

AECOM

AECOM USA GROUP, INC.
1200 SUMMIT AVENUE, SUITE 600
FORT WORTH, TEXAS 76102
WWW.AECOM.COM
817.698.6770

REVISED: 05/21/10

SHEET 2 OF 8

Date: 01/28/10

Project No. 60102581.02

60052528
R152By.dwg

B.B.B. & C. RR CO. SURVEY No. 50
ABSTRACT 104

LOT: 16

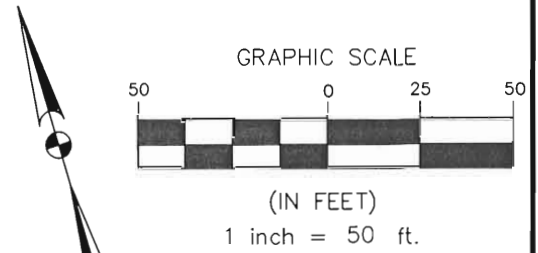
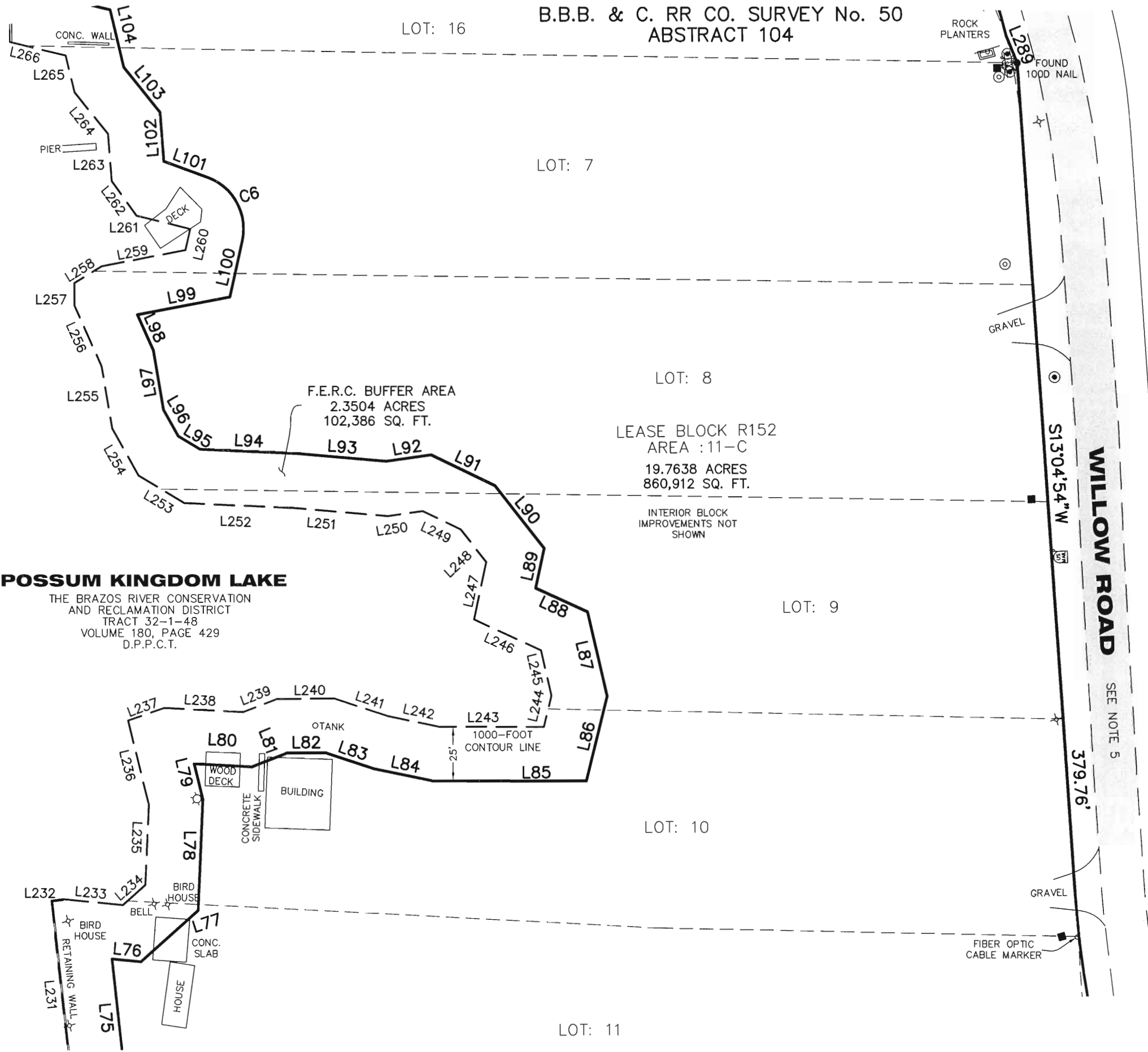
LOT: 7

LOT: 8

LOT: 9

LOT: 10

LOT: 11



- LEGEND
- = LEASE CORNER MARKER "AS NOTED"
 - OH = OVERHEAD LINES
 - ⊙ = WATER METER
 - ▽ = FLAG POLE
 - = TELEPHONE PEDESTAL
 - = POWER POLE
 - ⊙ = WATER VALVE
 - ⊗ = IRRIGATION CONTROL VALVE
 - ⊙ = FIRE HYDRANT
 - ⊙ = POST
 - ⊙ = ELECTRIC PEDESTAL
 - ⊙ = SIGN
 - ⊙ = MAIL BOX

THE BRAZOS RIVER CONSERVATION AND RECLAMATION DISTRICT
TRACT 32-1-48
VOLUME 180, PAGE 429
D.P.P.C.T.

POSSUM KINGDOM LAKE
THE BRAZOS RIVER CONSERVATION AND RECLAMATION DISTRICT
TRACT 32-1-48
VOLUME 180, PAGE 429
D.P.P.C.T.

STANDARD LAND SURVEY OF
22.1142 ACRES
SITUATED IN TRACT 32-1-48
AREA 11-C, LOTS 3 - 27
POSSUM KINGDOM LAKE
B.B.B. & C. R.R. Co. SURVEY No. 50
ABSTRACT 104
PALO PINTO COUNTY, TEXAS

AECOM	AECOM USA GROUP, INC. 1200 SUMMIT AVENUE, SUITE 600 FORT WORTH, TEXAS 76102 WWW.AECOM.COM 817.698.6770	
	Date: 01/28/10	Project No. 60102581.02

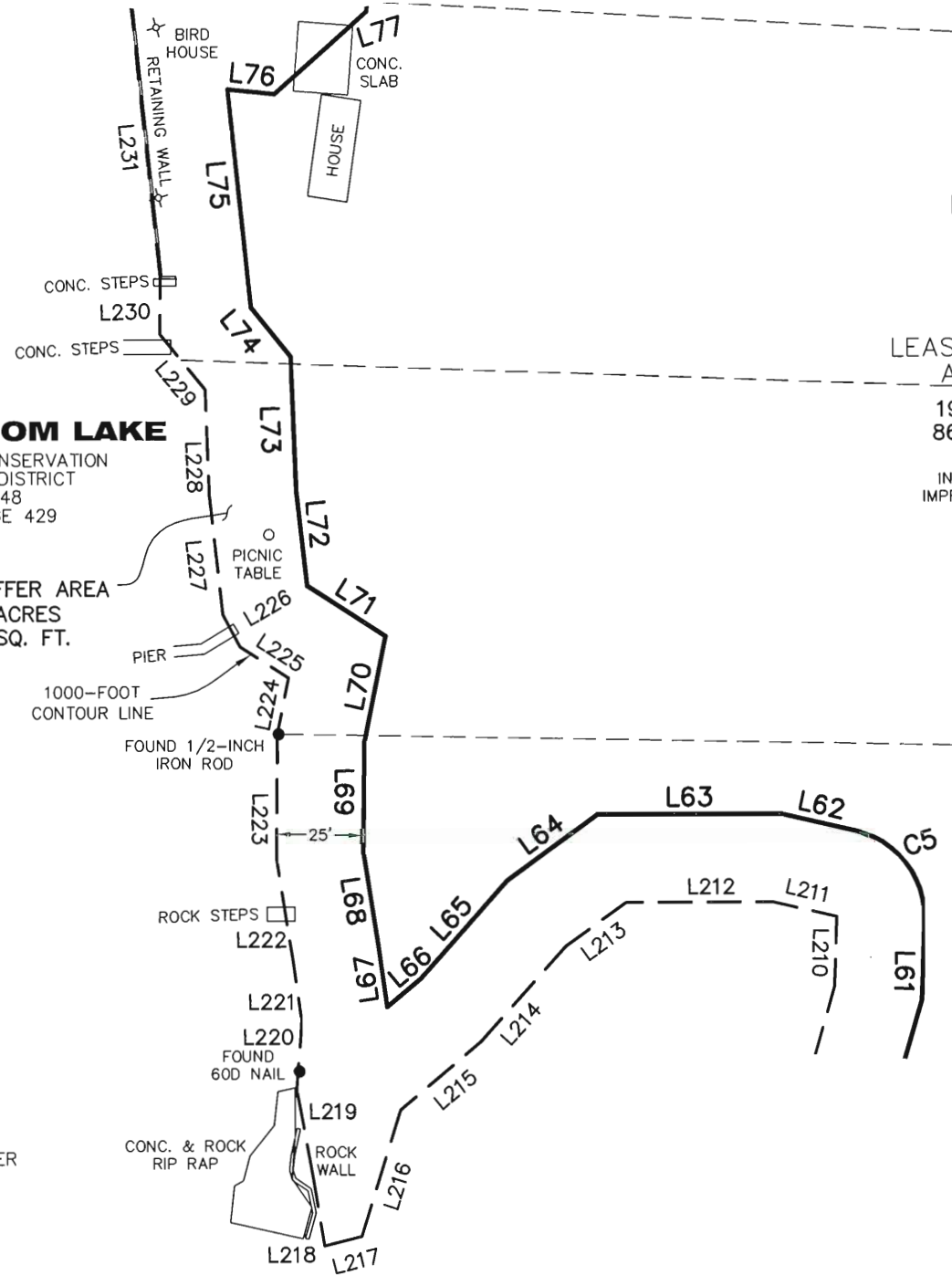
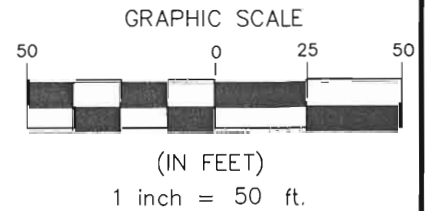
REVISED: 05/21/10 SHEET 3 OF 8

NO PART OR PARTS OF THIS DRAWING MAY BE REPRODUCED OR TRANSMITTED IN ANY WAY OR FORM (ELECTRONIC, MECHANICAL, PHOTOCOPYING, OR OTHERWISE) WITHOUT THE EXPRESS WRITTEN PERMISSION OF AECOM.

S:\Survcon\Projects\60102581\3.0 Ref Docs\Drafting\Undeveloped Strips\Blocks\R152\60052528 R152B.R.dwg 5/18/2010 8:56:56 AM CDT

B.B.B. & C. RR CO. SURVEY No. 50
ABSTRACT 104

LOT: 10



LOT: 11

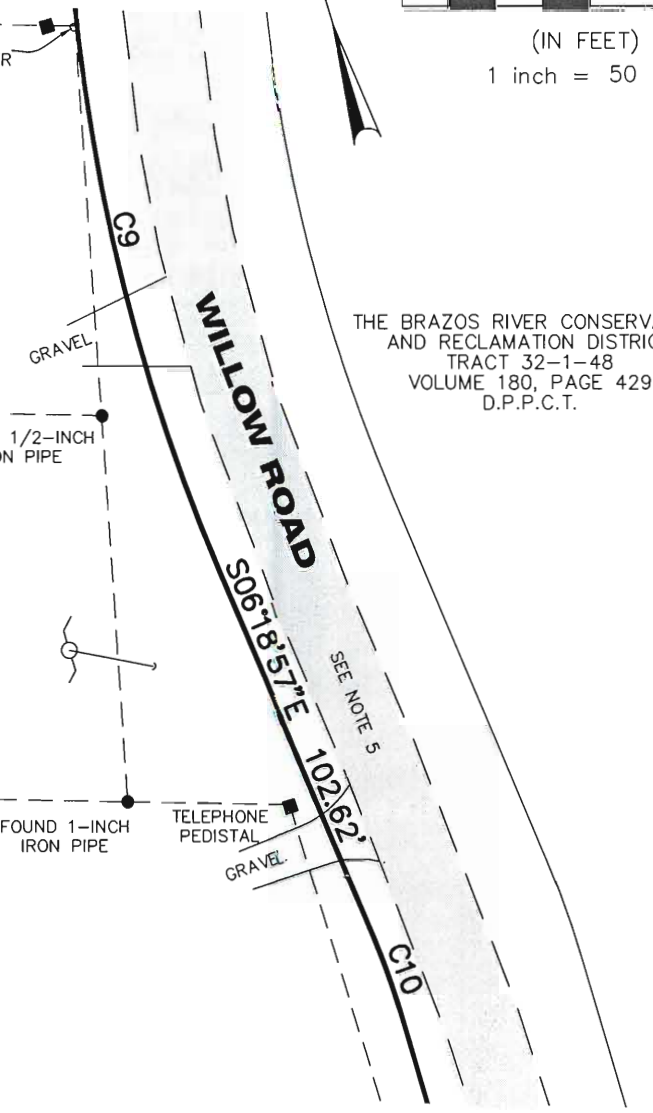
LEASE BLOCK R152
AREA :11-C
19.7638 ACRES
860,912 SQ. FT.

INTERIOR BLOCK
IMPROVEMENTS NOT
SHOWN

LOT: 12

LOT: 13

LOT: 14



THE BRAZOS RIVER CONSERVATION
AND RECLAMATION DISTRICT
TRACT 32-1-48
VOLUME 180, PAGE 429
D.P.P.C.T.

POSSUM KINGDOM LAKE

THE BRAZOS RIVER CONSERVATION
AND RECLAMATION DISTRICT
TRACT 32-1-48
VOLUME 180, PAGE 429
D.P.P.C.T.

F.E.R.C. BUFFER AREA
2.3504 ACRES
102,386 SQ. FT.

STANDARD LAND SURVEY
OF

22.1142 ACRES
SITUATED IN TRACT 32-1-48
AREA 11-C, LOTS 3 - 27
POSSUM KINGDOM LAKE
B.B.B. & C. R.R. Co. SURVEY No. 50
ABSTRACT 104
PALO PINTO COUNTY, TEXAS

- LEGEND**
- = LEASE CORNER MARKER "AS NOTED"
 - OH = OVERHEAD LINES
 - ⊙ = WATER METER
 - ▽ = FLAG POLE
 - = TELEPHONE PEDESTAL
 - ⊕ = POWER POLE
 - ⊗ = WATER VALVE
 - ⊗ = IRRIGATION CONTROL VALVE
 - ⊕ = FIRE HYDRANT
 - ⊕ = POST
 - ⊕ = ELECTRIC PEDESTAL
 - ⊕ = SIGN
 - ⊕ = MAIL BOX

AECOM

AECOM USA GROUP, INC.
1200 SUMMIT AVENUE, SUITE 600
FORT WORTH, TEXAS 76102
WWW.AECOM.COM
817.698.6770

REVISED: 05/21/10

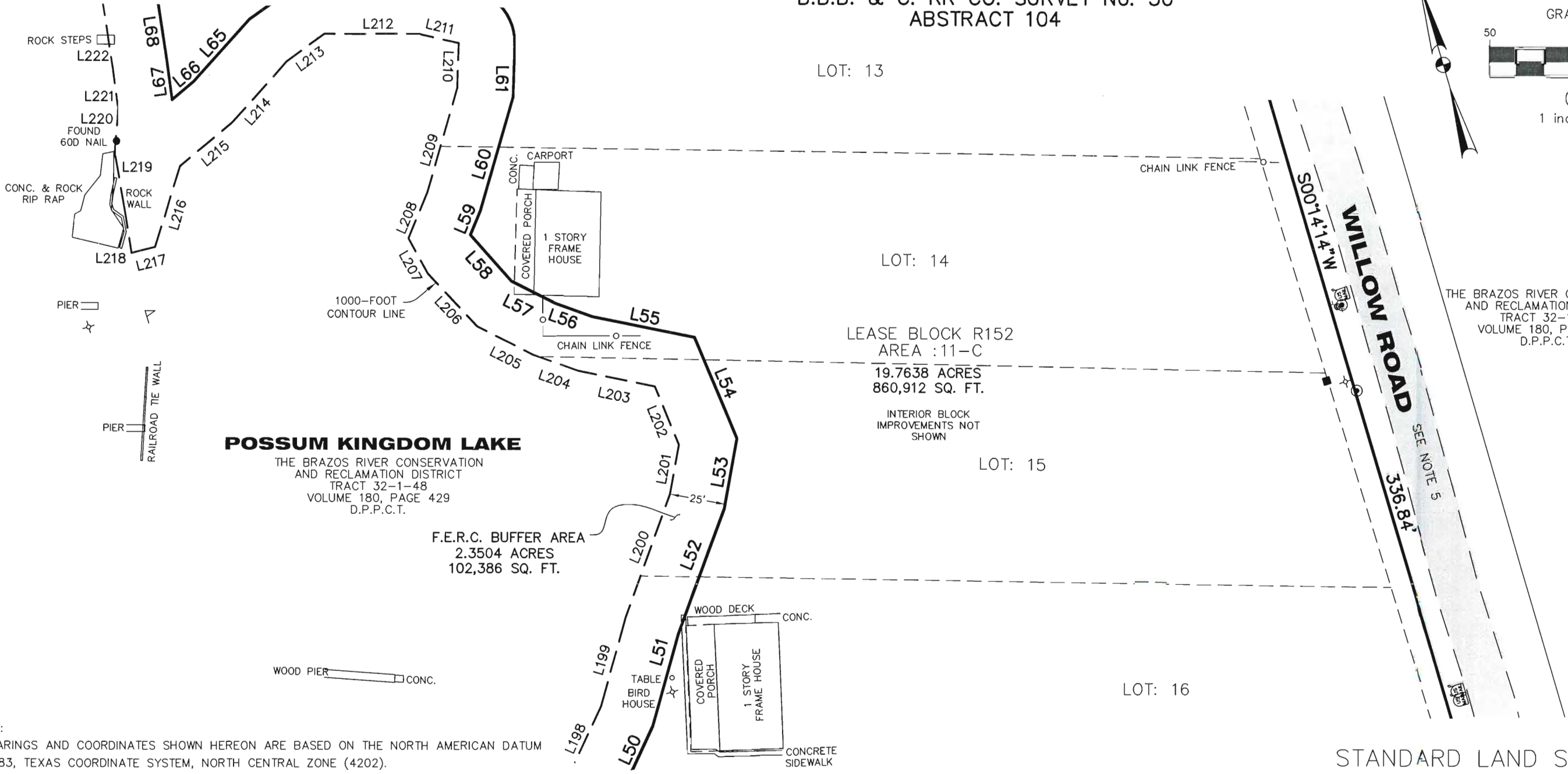
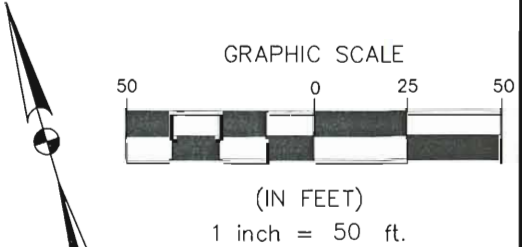
SHEET 4 OF 8

Date: 01/28/10

Project No. 60102581.02

60052528
R152By.dwg

B.B.B. & C. RR CO. SURVEY No. 50
ABSTRACT 104



POSSUM KINGDOM LAKE

THE BRAZOS RIVER CONSERVATION
AND RECLAMATION DISTRICT
TRACT 32-1-48
VOLUME 180, PAGE 429
D.P.P.C.T.

F.E.R.C. BUFFER AREA
2.3504 ACRES
102,386 SQ. FT.

LEASE BLOCK R152
AREA :11-C
19.7638 ACRES
860,912 SQ. FT.

INTERIOR BLOCK
IMPROVEMENTS NOT
SHOWN

THE BRAZOS RIVER CONSERVATION
AND RECLAMATION DISTRICT
TRACT 32-1-48
VOLUME 180, PAGE 429
D.P.P.C.T.

NOTES:

- 1) BEARINGS AND COORDINATES SHOWN HEREON ARE BASED ON THE NORTH AMERICAN DATUM OF 1983, TEXAS COORDINATE SYSTEM, NORTH CENTRAL ZONE (4202).
- 2) 1,000-FOOT CONTOUR ELEVATION OF POSSUM KINGDOM LAKE IS DETERMINED BASED ON MEASUREMENTS FROM THE TOP OF THE EXISTING SPILLWAY CREST GATES AT THE MORRIS SHEPPARD DAM BEING AT ELEVATION 1,000-FEET ABOVE MEAN SEA LEVEL AS NOTED IN FEDERAL POWER COMMISSION REPORT PROJECT NO. 1490 - TEXAS ON JUNE 2, 1938.
- 3) SET = 5/8" IRON ROD W/CAP STAMPED "AECOM" SET; D.R.P.P.C.T.= DEED RECORDS, PALO PINTO COUNTY, TEXAS; P.R.P.P.C.T.= PLAT RECORDS, PALO PINTO COUNTY, TEXAS; F.E.R.C.= FEDERAL ENERGY REGULATORY COMMISSION; J.R.P.P.C.T.= JUDGEMENT RECORDS, PALO PINTO COUNTY, TEXAS; LFS = 5/8" IRON ROD W/CAP STAMPED "LINKFIELD RPLS 5087" FOUND.
- 4) METES AND BOUNDS DESCRIPTIONS TO ACCOMPANY THIS SURVEY.
- 5) LOCATION, POSITION AND GEOMETRY OF ROAD RIGHTS-OF-WAY SHOWN AND DESCRIBED HEREON BASED ON SURVEYS PROVIDED BY LINK FIELD SERVICES, NO DEED OF RECORD HAS BEEN RECORDED AT THIS TIME FOR SAME UNLESS NOTED OTHERWISE.
- 6) IMPROVEMENTS SHOWN HEREON TIED FEBRUARY 2010.

- LEGEND
- = LEASE CORNER MARKER "AS NOTED"
 - OH = OVERHEAD LINES
 - ⊙ = WATER METER
 - ▽ = FLAG POLE
 - = TELEPHONE PEDESTAL
 - = POWER POLE
 - ⊙ = WATER VALVE
 - ⊗ = IRRIGATION CONTROL VALVE
 - ⊙ = FIRE HYDRANT
 - ⊙ = POST
 - = ELECTRIC PEDESTAL
 - = SIGN
 - ⊙ = MAIL BOX

STANDARD LAND SURVEY
OF
22.1142 ACRES
SITUATED IN TRACT 32-1-48
AREA 11-C, LOTS 3 - 27
POSSUM KINGDOM LAKE
B.B.B. & C. R.R. Co. SURVEY No. 50
ABSTRACT 104
PALO PINTO COUNTY, TEXAS

AECOM	AECOM USA GROUP, INC. 1200 SUMMIT AVENUE, SUITE 600 FORT WORTH, TEXAS 76102 WWW.AECOM.COM 817.698.6770	
	Date: 01/28/10	Project No. 60102581.02

NO PART OR PARTS OF THIS DRAWING MAY BE REPRODUCED OR RETRANSMITTED IN ANY WAY OR FORM (ELECTRONIC, MECHANICAL, PHOTOCOPYING, OR OTHERWISE) WITHOUT THE EXPRESS WRITTEN PERMISSION OF AECOM.

S:\Surcon\Projects\60102581\3.0 Ref Docs\Drafting\Undeveloped Strips\Blocks\R152\60052528 R152ByR.dwg 5/18/2010 8:56:56 AM CDT

B.B.B. & C. RR CO. SURVEY No. 50
ABSTRACT 104

LOT: 16

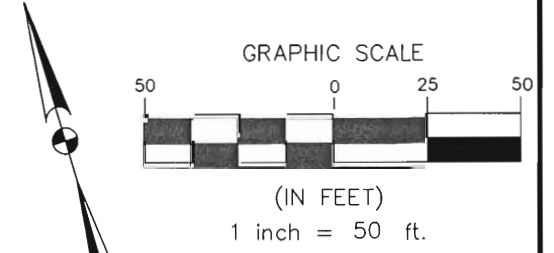
LOT: 17

LEASE BLOCK R152
AREA : 11-C
19.7638 ACRES
860,912 SQ. FT.

INTERIOR BLOCK
IMPROVEMENTS NOT
SHOWN

LOT: 18

LOT: 19

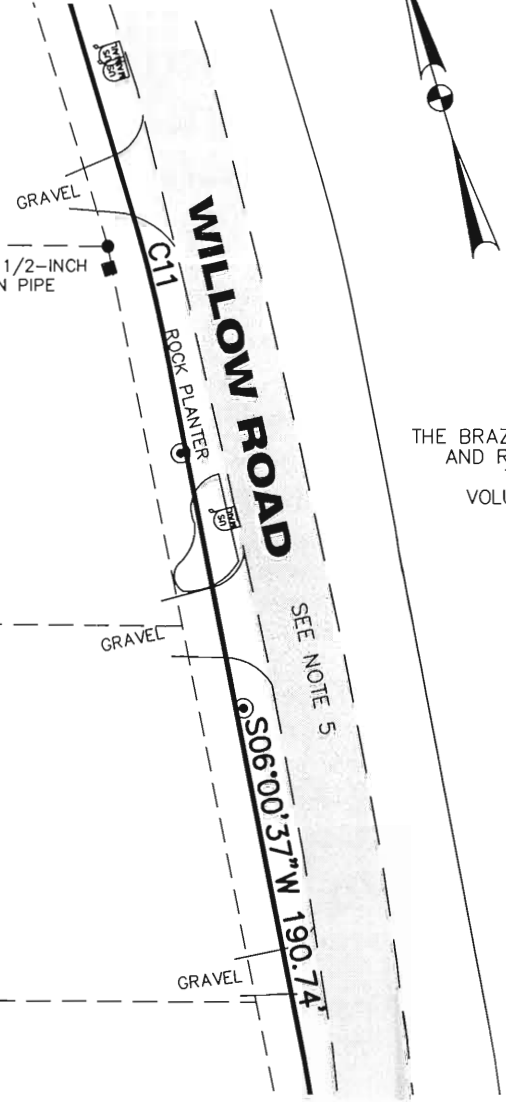
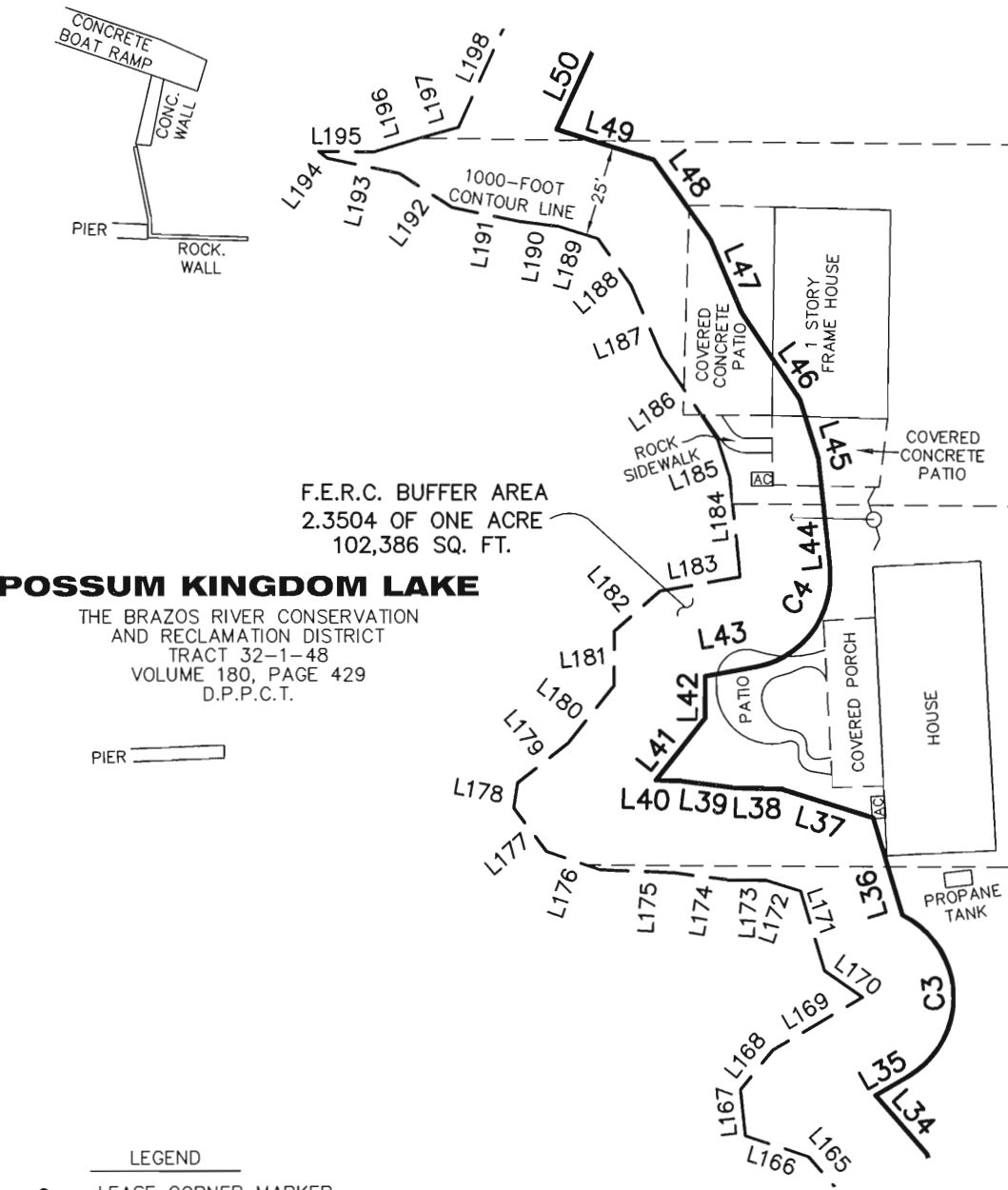


THE BRAZOS RIVER CONSERVATION
AND RECLAMATION DISTRICT
TRACT 32-1-48
VOLUME 180, PAGE 429
D.P.P.C.T.

POSSUM KINGDOM LAKE

THE BRAZOS RIVER CONSERVATION
AND RECLAMATION DISTRICT
TRACT 32-1-48
VOLUME 180, PAGE 429
D.P.P.C.T.

F.E.R.C. BUFFER AREA
2.3504 OF ONE ACRE
102,386 SQ. FT.



- LEGEND**
- = LEASE CORNER MARKER
"AS NOTED"
 - OH = OVERHEAD LINES
 - ⊙ = WATER METER
 - ▽ = FLAG POLE
 - = TELEPHONE PEDESTAL
 - = POWER POLE
 - ⊙ = WATER VALVE
 - ⊙ = IRRIGATION CONTROL VALVE
 - ⊙ = FIRE HYDRANT
 - ⊙ = POST
 - = ELECTRIC PEDESTAL
 - ⊙ = SIGN
 - ⊙ = MAIL BOX

STANDARD LAND SURVEY
OF
22.1142 ACRES
SITUATED IN TRACT 32-1-48
AREA 11-C, LOTS 3 - 27
POSSUM KINGDOM LAKE
B.B.B. & C. R.R. Co. SURVEY No. 50
ABSTRACT 104
PALO PINTO COUNTY, TEXAS

AECOM	AECOM USA GROUP, INC. 1200 SUMMIT AVENUE, SUITE 600 FORT WORTH, TEXAS 76102 WWW.AECOM.COM 817.698.6770	
	Date: 01/28/10	Project No. 60102581.02

REVISED: 05/21/10 SHEET 6 OF 8

NO PART OR PARTS OF THIS DRAWING MAY BE REPRODUCED OR TRANSMITTED IN ANY WAY OR FORM (ELECTRONIC, MECHANICAL, PHOTOCOPYING, OR OTHERWISE) WITHOUT THE EXPRESS WRITTEN PERMISSION OF AECOM.

S:\Survcon\Projects\60102581\3.0 Ref Docs\Drafting\Undeveloped Strips\Blocks\R152\60052528 R152By.dwg 5/18/2010 8:56:56 AM CDT

B.B.B. & C. RR CO. SURVEY No. 50
ABSTRACT 104



(IN FEET)
1 inch = 50 ft.



- LEGEND**
- = LEASE CORNER MARKER "AS NOTED"
 - OH = OVERHEAD LINES
 - ⊙ = WATER METER
 - ▽ = FLAG POLE
 - = TELEPHONE PEDESTAL
 - = POWER POLE
 - ⊙ = WATER VALVE
 - ⊙ = IRRIGATION CONTROL VALVE
 - ⊙ = FIRE HYDRANT
 - ⊙ = POST
 - ⊙ = ELECTRIC PEDESTAL
 - ⊙ = SIGN
 - ⊙ = MAIL BOX

POSSUM KINGDOM LAKE

THE BRAZOS RIVER CONSERVATION
AND RECLAMATION DISTRICT
TRACT 32-1-48
VOLUME 180, PAGE 429
D.P.P.C.T.

F.E.R.C. BUFFER AREA
2.3504 OF ONE ACRE
102,386 SQ. FT.

LEASE BLOCK R152
AREA : 11-C
19.7638 ACRES
860,912 SQ. FT.

INTERIOR BLOCK
IMPROVEMENTS NOT
SHOWN

THE BRAZOS RIVER CONSERVATION
AND RECLAMATION DISTRICT
TRACT 32-1-48
VOLUME 180, PAGE 429
D.P.P.C.T.

STANDARD LAND SURVEY
OF
22.1142 ACRES
SITUATED IN TRACT 32-1-48
AREA 11-C, LOTS 3 - 27
POSSUM KINGDOM LAKE
B.B.B. & C. R.R. Co. SURVEY No. 50
ABSTRACT 104
PALO PINTO COUNTY, TEXAS

AECOM

AECOM USA GROUP, INC.
1200 SUMMIT AVENUE, SUITE 600
FORT WORTH, TEXAS 76102
WWW.AECOM.COM
817.698.6770

REVISED: 05/21/10 SHEET 7 OF 8

Date: 01/28/10

Project No. 60102581.02

60052528
R152By.dwg

B.B.B. & C. RR CO. SURVEY No. 50
ABSTRACT 104

LOT: 23

LOT: 24

LOT: 25

LEASE BLOCK R152
AREA :11-C
19.7638 ACRES
860,912 SQ. FT.

INTERIOR BLOCK
IMPROVEMENTS NOT
SHOWN

LOT: 26

LOT: 27

POSSUM KINGDOM LAKE

THE BRAZOS RIVER CONSERVATION
AND RECLAMATION DISTRICT
TRACT 32-1-48
VOLUME 180, PAGE 429
D.P.P.C.T.

CONCRETE
BOAT RAMP

WALL
PIER

ROCK
L131 RETAINING
F.E.R.C. BUFFER AREA
2.3504 OF ONE ACRE
102,386 SQ. FT.

1000-FOOT
CONTOUR LINE

RAIL ROAD TIE
RETAINING WALL

SET
BARBED WIRE
FENCE

FOUND 1/2-INCH
IRON ROD W/CAP
STAMPED "LAWSON"

CHAIN LINK FENCE
S46°27'22"W
WILLOW ROAD

FOUND 1/2-INCH
IRON ROD W/CAP
STAMPED "LAWSON"

SEE NOTE 5

THE BRAZOS RIVER CONSERVATION
AND RECLAMATION DISTRICT
TRACT 32-1-48
VOLUME 180, PAGE 429
D.P.P.C.T.

STANDARD LAND SURVEY
OF
22.1142 ACRES
SITUATED IN TRACT 32-1-48
AREA 11-C, LOTS 3 - 27
POSSUM KINGDOM LAKE
B.B.B. & C. R.R. Co. SURVEY No. 50
ABSTRACT 104
PALO PINTO COUNTY, TEXAS

AECOM

AECOM USA GROUP, INC.
1200 SUMMIT AVENUE, SUITE 600
FORT WORTH, TEXAS 76102
WWW.AECOM.COM
817.698.6770

REVISED: 05/21/10

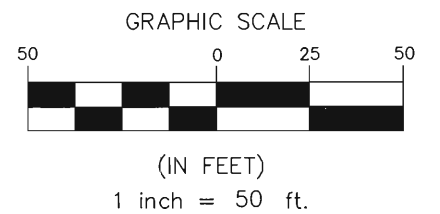
SHEET 8 OF 8

Date: 01/28/10

Project No. 60102581.02

60052528
R152By.dwg

- LEGEND
- = LEASE CORNER MARKER
"AS NOTED"
 - OH = OVERHEAD LINES
 - ⊙ = WATER METER
 - ▽ = FLAG POLE
 - = TELEPHONE PEDESTAL
 - ⊕ = POWER POLE
 - ⊙ = WATER VALVE
 - ⊙ = IRRIGATION CONTROL VALVE
 - ⊙ = FIRE HYDRANT
 - ⊙ = POST
 - = ELECTRIC PEDESTAL
 - ⊙ = SIGN
 - ⊙ = MAIL BOX



NO PART OR PARTS OF THIS DRAWING MAY BE REPRODUCED OR TRANSMITTED IN ANY WAY OR FORM (ELECTRONIC, MECHANICAL, PHOTOCOPYING, OR OTHERWISE) WITHOUT THE EXPRESS WRITTEN PERMISSION OF AECOM.

S:\Surveon\Projects\60102581\3.0 Ref Docs\Drafting\Undeveloped Strips\Blocks\R152\60052528 R152By.dwg 5/18/2010 8:56:56 AM CDT