

VICINITY MAP  
NOT TO SCALE

NOTES:  
1) BEARINGS AND COORDINATES SHOWN HEREON ARE BASED ON THE NORTH AMERICAN DATUM OF 1983, TEXAS COORDINATE SYSTEM, NORTH CENTRAL ZONE (4202).

2) 1,000-FOOT CONTOUR ELEVATION OF POSSUM KINGDOM LAKE IS DETERMINED BASED ON MEASUREMENTS FROM THE TOP OF THE EXISTING SPILLWAY CREST GATES AT THE MORRIS SHEPPARD DAM BEING AT ELEVATION 1,000- FEET ABOVE MEAN SEA LEVEL AS NOTED IN FEDERAL POWER COMMISSION REPORT PROJECT NO. 1490 - TEXAS ON JUNE 2, 1938.

3) SET = 5/8" IRON ROD W/CAP STAMPED "AECOM" SET; D.R.P.C.T. = DEED RECORDS, PALO PINTO COUNTY, TEXAS; P.R.P.C.T. = PLAT RECORDS, PALO PINTO COUNTY, TEXAS; F.E.R.C. = FEDERAL ENERGY REGULATORY COMMISSION; J.R.P.C.T. = JUDGEMENT RECORDS, PALO PINTO COUNTY, TEXAS. LFS = 5/8" IRON ROD W/CAP STAMPED "LINKFIELD RPLS 5087" FOUND.

4) METES AND BOUNDS DESCRIPTIONS TO ACCOMPANY THIS SURVEY.

5) LOCATION, POSITION AND GEOMETRY OF ROAD RIGHTS-OF-WAY SHOWN AND DESCRIBED HEREON BASED ON SURVEYS PROVIDED BY LINK FIELD SERVICES, NO DEED OF RECORD HAS BEEN RECORDED AT THIS TIME FOR SAME UNLESS NOTED OTHERWISE.

6) IMPROVEMENTS SHOWN HEREON TIED FEBRUARY 2010.

SURVEYORS CERTIFICATE

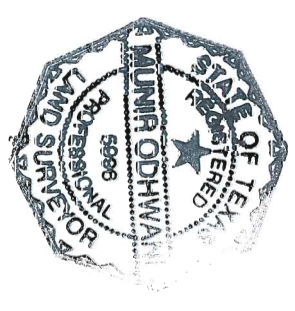
TO: BRAZOS RIVER AUTHORITY, PATTERSON PK LAND PARTNERSHIP, LTD., AND HERITAGE TITLE COMPANY OF AUSTIN, INC.

I, MUNIR ODHWANI, A REGISTERED PROFESSIONAL LAND SURVEYOR IN THE STATE OF TEXAS, REGISTRATION NUMBER 5996, HEREBY STATE THAT A SURVEY OF THE REAL PROPERTY DESCRIBED IN SEPARATE LEGAL DESCRIPTION AS NOTED HEREON, WAS ACTUALLY MADE UPON THE GROUND UNDER MY DIRECTION AND SUPERVISION, AND THAT TO THE BEST OF MY PROFESSIONAL KNOWLEDGE AND BELIEF, THE INFORMATION SHOWN HEREON IS CORRECT AS DETERMINED BY SAID SURVEY.

THIS SURVEY SUBSTANTIALLY COMPLIES WITH THE CURRENT TEXAS SOCIETY OF PROFESSIONAL SURVEYORS STANDARDS AND SPECIFICATIONS FOR A CATEGORY 1B, CONDITION II SURVEY.

*Munir Odhwani*

MUNIR ODHWANI  
REGISTERED PROFESSIONAL LAND SURVEYOR  
TEXAS REGISTRATION NO. 5996  
DATE: MAY 21, 2010



- LEGEND
- = LEASE CORNER MARKER  
"AS NOTED" (SEE NOTE 3)
  - OH = OVERHEAD LINES
  - = POWER POLE
  - ⊙ = WATER METER
  - ⊕ = IRRIGATION CONTROL VALVE
  - ⚑ = FLAG POLE
  - ⚓ = SIGN
  - = TELEPHONE PEDISTAL
  - ⊙ = GAS METER
  - ☆ = LIGHT
  - 📧 = MAIL BOX
  - ✚ = POST

ACREAGE TABLE	
LEASE BLOCK:	17.1784 ACRES
F.E.R.C. BUFFER AREA:	2.1609 ACRES
SURVEY BLOCK:	19.3393 ACRES TOTAL

STANDARD LAND SURVEY  
OF  
**19.3393 ACRES**

SITUATED IN TRACT 37-1-48  
AREA 11-B, LOTS 1-21  
POSSUM KINGDOM LAKE  
JULIO LAZARIN SURVEY  
ABSTRACT 283  
PALO PINTO COUNTY, TEXAS

**AECOM**

AECOM USA GROUP, INC.  
1200 SUMMIT AVENUE, SUITE 600  
FORT WORTH, TEXAS 76102  
WWW.AECOM.COM  
817.698.6770

REVISED: 05/21/10

SHEET 1 OF 7

Date: 01/21/10

Project No. 60102581

60052528  
R151By.dwg

CURVE TABLE					
CURVE	LENGTH	DELTA	RADIUS	CHORD BEARING	CHORD
C1	24.56	561.718"	25.00	N47.5012"W	23.58'
C2	38.13	87.2349"	25.00	N17.5000"E	34.54'
C3	24.17	55.2359"	25.00	N53.3354"W	23.24'
C4	40.65	93.0929"	25.00	N56.1159"E	36.32'
C5	41.35	94.4531"	25.00	N06.5416"W	36.79'
C6	67.71	155.1015"	25.00	N06.5416"E	48.83'
C7	41.10	94.1144"	25.00	N84.3943"E	36.63'
C8	120.25	1205.14"	570.00	S20.0107"W	120.03'
C9	113.07	1730.34"	370.00	S13.4837"E	112.63'
C10	35.22	910.25"	220.00	S27.0906"E	35.19'
C11	2.68	00.3253"	280.00	S31.2752"E	2.68'

LINE	BEARING	DISTANCE
L181	N06.3156"E	50.73'
L182	N19.3342"E	41.83'
L183	N13.2623"E	41.73'
L184	N16.5714"E	43.35'
L185	N16.2349"E	33.82'
L186	N53.1633"W	21.71'
L187	N51.0016"W	46.29'
L188	N56.2134"W	4.88'
L189	S81.5646"E	4.55'
L190	S59.1745"E	16.59'
L191	S58.5439"E	40.97'
L192	S37.5716"E	24.64'
L193	N79.2705"E	33.10'
L194	N22.2930"E	45.61'
L195	N08.1120"E	27.92'
L196	N22.5055"W	55.70'
L197	N29.3635"W	43.69'
L198	N49.0847"W	41.58'
L199	N40.2330"W	37.62'
L200	N52.1836"W	88.66'
L201	N50.0615"W	38.99'
L202	N33.5726"W	9.95'
L203	S68.2346"E	12.17'
L204	S52.3454"E	42.62'
L205	S49.1209"E	65.41'
L206	N39.0311"E	34.21'
L207	N05.5203"E	33.63'
L208	N27.4612"W	33.19'
L209	N63.2523"W	42.69'
L210	N51.5412"W	49.66'
L211	N56.1842"W	47.38'
L212	N15.1946"W	8.16'
L213	N77.3434"E	8.73'
L214	S65.3446"E	57.34'
L215	S80.1058"E	12.65'
L216	N66.1233"E	20.88'
L217	N50.3125"E	43.79'
L218	N34.4800"E	43.43'
L219	N30.4215"E	39.99'
L220	N41.4900"E	3.42'
L221	N03.1220"E	11.02'
L222	N00.5355"E	2.75'
L223	N29.3207"W	38.10'
L224	N35.4245"W	37.75'
L225	N01.3152"E	13.97'
L226	N76.2050"E	26.66'
L227	N55.1534"E	30.52'
L228	N46.5813"E	20.28'
L229	N85.0657"E	14.33'
L230	S87.1452"E	3.50'
L231	N86.3812"E	28.04'
L232	S52.0422"E	32.40'
L233	S48.1425"E	71.61'
L234	N37.3391"E	11.46'
L235	S63.0302"E	25.44'

LINE	BEARING	DISTANCE
L121	N08.5535"W	44.43'
L122	N08.1446"E	43.41'
L123	N04.3526"E	22.97'
L124	S88.3503"E	33.62'
L125	N61.3155"E	20.88'
L126	N25.5154"W	22.09'
L127	N81.5533"W	25.18'
L128	S86.2016"W	23.84'
L129	S67.0214"W	20.28'
L130	N60.2943"W	22.28'
L131	N35.3921"W	21.07'
L132	N21.0411"W	36.24'
L133	N28.5556"W	36.49'
L134	N39.1114"W	53.43'
L135	N30.5820"W	47.02'
L136	N34.0327"W	53.46'
L137	N01.0121"W	31.97'
L138	N02.1005"E	38.52'
L139	N03.1203"W	26.37'
L140	N42.4311"E	12.00'
L141	N19.1910"E	47.08'
L142	N03.1154"E	41.81'
L143	N48.2807"E	1.81'
L144	N07.1401"E	93.33'
L145	N12.3056"E	2.25'
L146	S80.2115"E	25.52'
L147	S75.3754"E	41.20'
L148	S77.0924"E	80.86'
L149	S88.0334"E	43.76'
L150	S77.1317"E	32.90'
L151	N09.3714"E	30.63'
L152	N26.4908"E	31.43'
L153	N31.4339"E	31.95'
L154	N09.1530"W	54.78'
L155	N18.1251"W	22.39'
L156	N47.3204"W	30.67'
L157	N62.4631"W	30.69'
L158	N74.2159"W	29.52'
L159	S81.0252"W	48.14'
L160	N79.1754"W	28.29'
L161	S05.5635"W	44.65'
L162	N69.4254"W	35.21'
L163	N35.2002"W	41.15'
L164	N17.4738"W	47.41'
L165	N05.3439"W	44.99'
L166	N19.4049"W	50.74'
L167	N25.4401"W	42.43'
L168	N04.2228"W	41.84'
L169	N38.5053"E	20.61'
L170	N64.4809"E	12.66'
L171	N84.2923"E	11.36'
L172	N70.4052"W	25.58'
L173	N31.3419"W	62.95'
L174	N21.5556"W	51.22'
L175	N01.1616"E	41.77'
L176	N04.2738"W	46.71'
L177	N01.3219"E	41.19'
L178	N22.3101"W	49.34'
L179	N07.2945"W	38.56'
L180	N29.3308"E	39.22'

LINE	BEARING	DISTANCE
L61	N64.4809"E	2.56'
L62	N84.2923"E	7.02'
L63	N70.4052"W	16.70'
L64	N31.3419"W	51.97'
L65	N21.5556"W	43.98'
L66	N01.1616"E	37.89'
L67	N04.2738"W	46.65'
L68	N01.3219"E	45.21'
L69	N22.3101"W	51.37'
L70	N07.2945"W	26.89'
L71	N29.3308"E	35.94'
L72	N06.3156"E	52.97'
L73	N19.3342"E	40.31'
L74	N13.2623"E	42.30'
L75	N16.5714"E	42.70'
L76	N16.2349"E	10.85'
L77	N79.2705"E	45.32'
L78	N22.2930"E	62.31'
L79	N08.1120"E	38.00'
L80	N22.5055"W	64.11'
L81	N29.3635"W	49.47'
L82	N49.0847"W	43.97'
L83	N40.2330"W	32.77'
L84	N39.0311"E	21.87'
L85	N05.5203"E	48.63'
L86	N27.4612"W	48.79'
L87	N63.2523"W	48.21'
L88	N51.5412"W	1.52'
L89	N66.1233"E	13.82'
L90	N50.3125"E	50.69'
L91	N34.4800"E	47.77'
L92	N30.4215"E	38.45'
L93	N41.4900"E	9.75'
L94	N03.1220"E	20.28'
L95	N00.5355"E	10.06'
L96	N29.3207"W	46.25'
L97	N35.4245"W	16.55'
L98	N76.2050"E	3.33'
L99	N55.1534"E	36.99'
L100	N46.5813"E	13.45'
L101	N85.0657"E	4.02'
L102	S87.1452"E	3.17'
L103	N86.3812"E	19.96'
L104	S52.0422"E	22.14'
L105	S48.1425"E	70.77'
L106	N37.3351"E	16.15'
L107	N77.5952"W	26.57'
L108	N05.5341"E	5.80'
L109	N05.3233"E	6.17'
L110	N10.2511"W	10.67'
L111	N28.4604"W	48.98'
L112	N13.3247"W	15.82'
L113	N19.4133"W	27.20'
L114	N75.5851"W	31.82'
L115	N66.5121"W	29.69'
L116	N84.4246"W	28.88'
L117	N87.4438"W	28.41'
L118	S74.2544"W	25.23'
L119	N84.0047"W	29.83'
L120	N77.1925"W	24.61'

LINE	BEARING	DISTANCE
L1	N03.5016"W	8.40'
L2	N05.5341"E	0.43'
L3	N05.3233"E	9.75'
L4	N10.2511"W	18.21'
L5	N28.4604"W	49.68'
L6	N13.3247"W	13.82'
L7	N19.4133"W	28.55'
L8	N75.5851"W	29.83'
L9	N66.5121"W	31.62'
L10	N84.4246"W	33.47'
L11	N87.4438"W	32.99'
L12	S74.2544"W	24.39'
L13	N84.0047"W	23.61'
L14	N77.1925"W	6.16'
L15	N08.5535"W	23.67'
L16	N08.1446"E	40.44'
L17	N04.3526"E	0.12'
L18	S88.3503"E	16.64'
L19	N61.3155"E	27.55'
L20	N25.5154"W	22.09'
L21	N81.5533"W	27.90'
L22	S86.2016"W	30.81'
L23	S67.0214"W	12.21'
L24	N60.2943"W	4.45'
L25	N35.3921"W	12.36'
L26	N21.0411"W	34.76'
L27	N28.5550"W	40.45'
L28	N39.1114"W	53.88'
L29	N30.5820"W	45.90'
L30	N34.0327"W	46.72'
L31	N01.0121"W	23.86'
L32	N02.1005"E	39.00'
L33	N03.1203"W	16.95'
L34	N42.4311"E	6.58'
L35	N19.1910"E	55.80'
L36	N03.1154"E	34.93'
L37	N48.2807"E	0.79'
L38	N07.1401"E	78.79'
L39	S75.3754"E	39.12'
L40	S77.0924"E	83.57'
L41	S88.0334"E	43.77'
L42	S77.1317"E	30.53'
L43	N09.3714"E	26.85'
L44	N26.4908"E	26.58'
L45	N31.4339"E	40.23'
L46	N09.1530"W	66.09'
L47	N18.1251"W	30.89'
L48	N47.3204"W	40.56'
L49	N62.4631"W	36.57'
L50	N74.2159"W	37.51'
L51	S81.0252"W	49.26'
L52	N79.1754"W	23.95'
L53	S05.5635"W	8.41'
L54	N35.2002"W	22.63'
L55	N17.4738"W	40.88'
L56	N05.3439"W	45.41'
L57	N19.4049"W	55.15'
L58	N25.4401"W	39.04'
L59	N04.2226"W	27.22'
L60	N38.5053"E	4.95'

STANDARD LAND SURVEY  
OF  
19.3393 ACRES

SITUATED IN TRACT 37-1-48  
AREA 11-B, LOTS 1-21  
POSSUM KINGDOM LAKE  
JULIO LAZARIN SURVEY  
ABSTRACT 283  
PALO PINTO COUNTY, TEXAS

**AECOM**

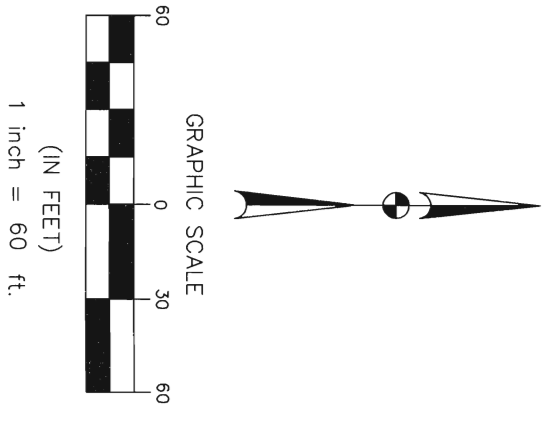
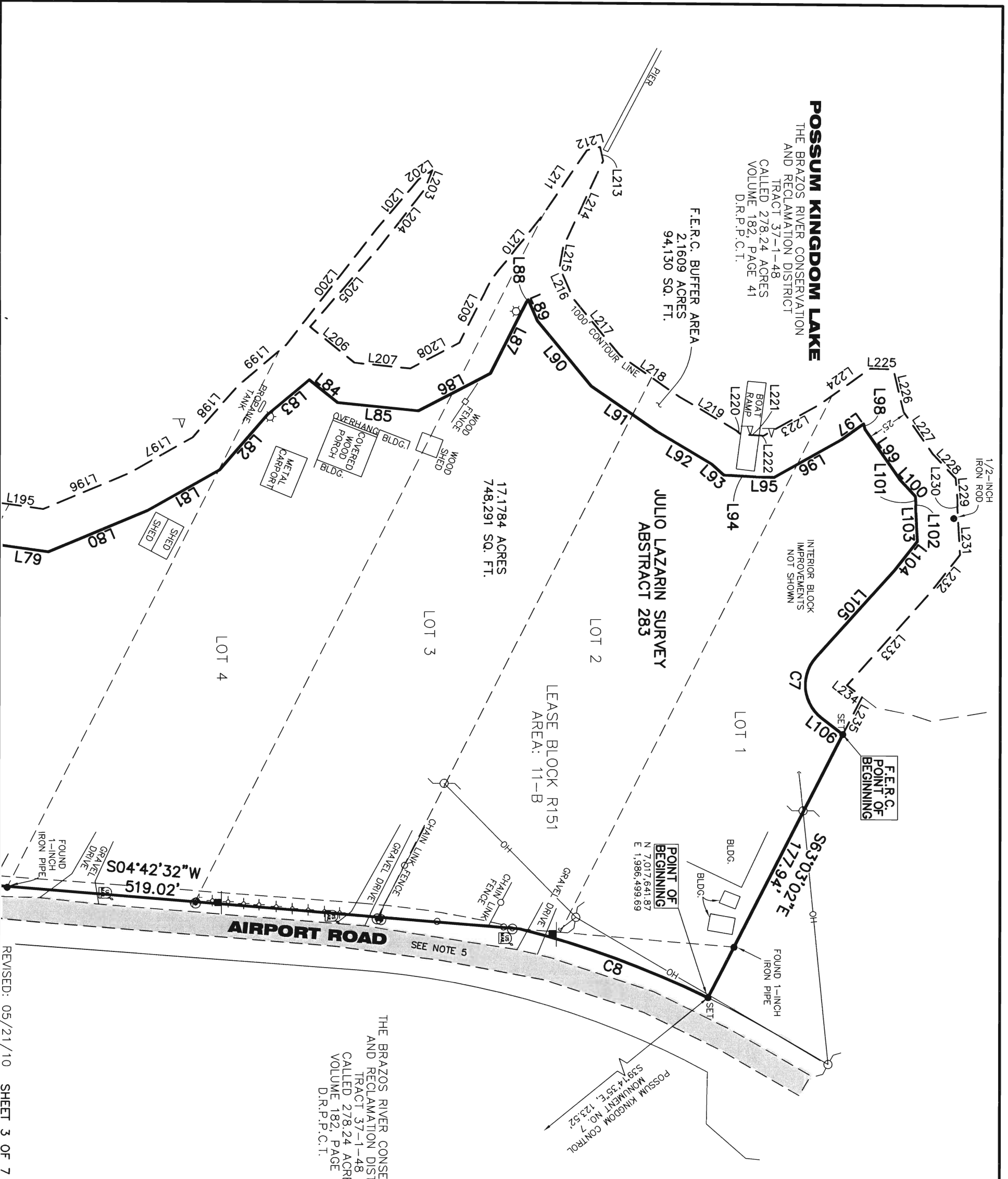
AECOM USA GROUP, INC.  
1200 SUMMIT AVENUE, SUITE 600  
FORT WORTH, TEXAS 76102  
WWW.AECOM.COM  
817.698.6770

**POSSUM KINGDOM LAKE**  
 THE BRAZOS RIVER CONSERVATION  
 AND RECLAMATION DISTRICT  
 TRACT 37-1-48  
 CALLED 278.24 ACRES  
 VOLUME 182, PAGE 41  
 D.R.P.C.T.

F.E.R.C. BUFFER AREA  
 2,1609 ACRES  
 94,130 SQ. FT.

**JULIO LAZARIN SURVEY  
 ABSTRACT 283**  
 17,1784 ACRES  
 748,291 SQ. FT.

THE BRAZOS RIVER CONSERVATION  
 AND RECLAMATION DISTRICT  
 TRACT 37-1-48  
 CALLED 278.24 ACRES  
 VOLUME 182, PAGE 41  
 D.R.P.C.T.



STANDARD LAND SURVEY  
 OF  
**19.3393 ACRES**  
 SITUATED IN TRACT 37-1-48  
 AREA 11-B, LOTS 1-21  
 POSSUM KINGDOM LAKE  
 JULIO LAZARIN SURVEY  
 ABSTRACT 283  
 PALO PINTO COUNTY, TEXAS

**AECOM**

AECOM USA GROUP, INC.  
 1200 SUMMIT AVENUE, SUITE 600  
 FORT WORTH, TEXAS 76102  
 WWW.AECOM.COM  
 817.698.6770

REVISED: 05/21/10 SHEET 3 OF 7

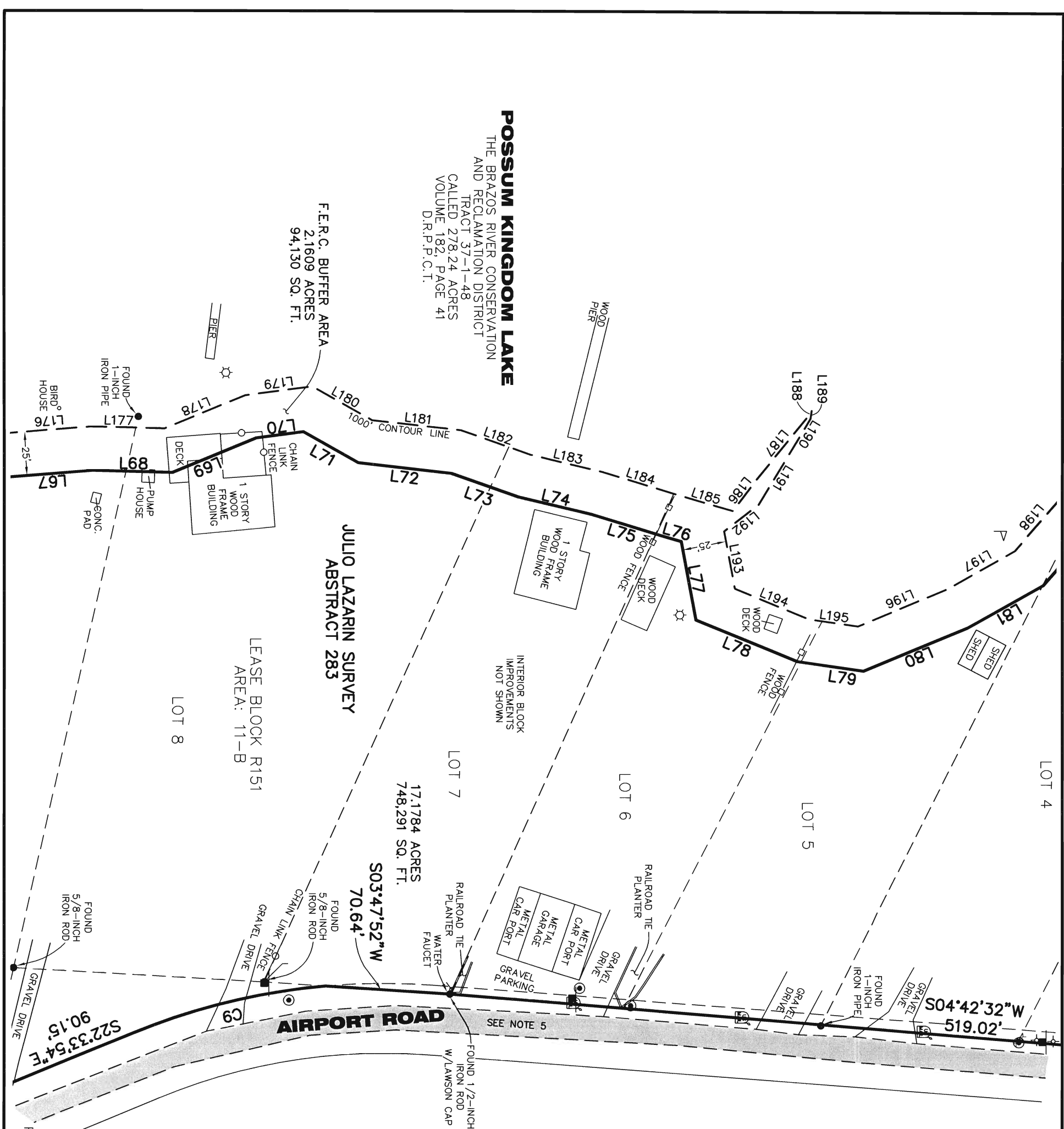
Date: 01/21/10 Project No. 60102581 60052528 R151By.dwg

NO PART OR PARTS OF THIS DRAWING MAY BE REPRODUCED OR TRANSMITTED IN ANY WAY OR FORM (ELECTRONIC, MECHANICAL, PHOTOCOPIING, OR OTHERWISE) WITHOUT THE EXPRESS WRITTEN PERMISSION OF AECOM.



**POSSUM KINGDOM LAKE**  
 THE BRAZOS RIVER CONSERVATION  
 AND RECLAMATION DISTRICT  
 TRACT 37-1-48  
 CALLED 278.24 ACRES  
 VOLUME 182, PAGE 41  
 D.R.P.P.C.T.

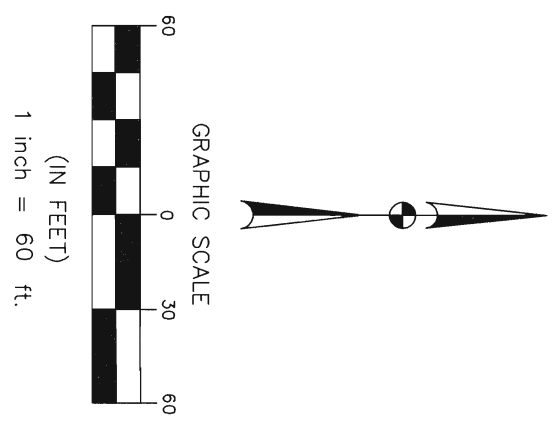
F.R.C. BUFFER AREA  
 2,1609 ACRES  
 94,130 SQ. FT.



THE BRAZOS RIVER CONSERVATION  
 AND RECLAMATION DISTRICT  
 TRACT 37-1-48  
 CALLED 278.24 ACRES  
 VOLUME 182, PAGE 41  
 D.R.P.P.C.T.

STANDARD LAND SURVEY  
 OF

**19.3393 ACRES**  
 SITUATED IN TRACT 37-1-48  
 AREA 11-B, LOTS 1-21  
 POSSUM KINGDOM LAKE  
 JULIO LAZARIN SURVEY  
 ABSTRACT 283  
 PALO PINTO COUNTY, TEXAS



REVISED: 05/21/10  
 SHEET 4 OF 7

<b>AECOM</b>	Date: 01/21/10	Project No. 60102581	60052528 R151By.dwg
	AECOM USA GROUP, INC. 1200 SUMMIT AVENUE, SUITE 600 FORT WORTH, TEXAS 76102 WWW.AECOM.COM 817.698.6770		

NO PART OR PARTS OF THIS DRAWING MAY BE REPRODUCED OR TRANSMITTED IN ANY WAY OR FORM (ELECTRONIC, MECHANICAL, PHOTOCOPIING, OR OTHERWISE) WITHOUT THE EXPRESS WRITTEN PERMISSION OF AECOM.

**POSSUM KINGDOM LAKE**  
 THE BRAZOS RIVER CONSERVATION  
 AND RECLAMATION DISTRICT  
 TRACT 37-1-48  
 VOLUME 182, PAGE 41  
 CALLED 278.24 ACRES  
 D.R.P.C.T.

F.E.R.C. BUFFER AREA  
 2,1609 ACRES  
 94,130 SQ. FT.

JULIO LAZARIN SURVEY  
 ABSTRACT 283

17,1784 ACRES  
 748,291 SQ. FT.

LEASE BLOCK R151  
 AREA: 11-B

36.67'

576.39'36"E

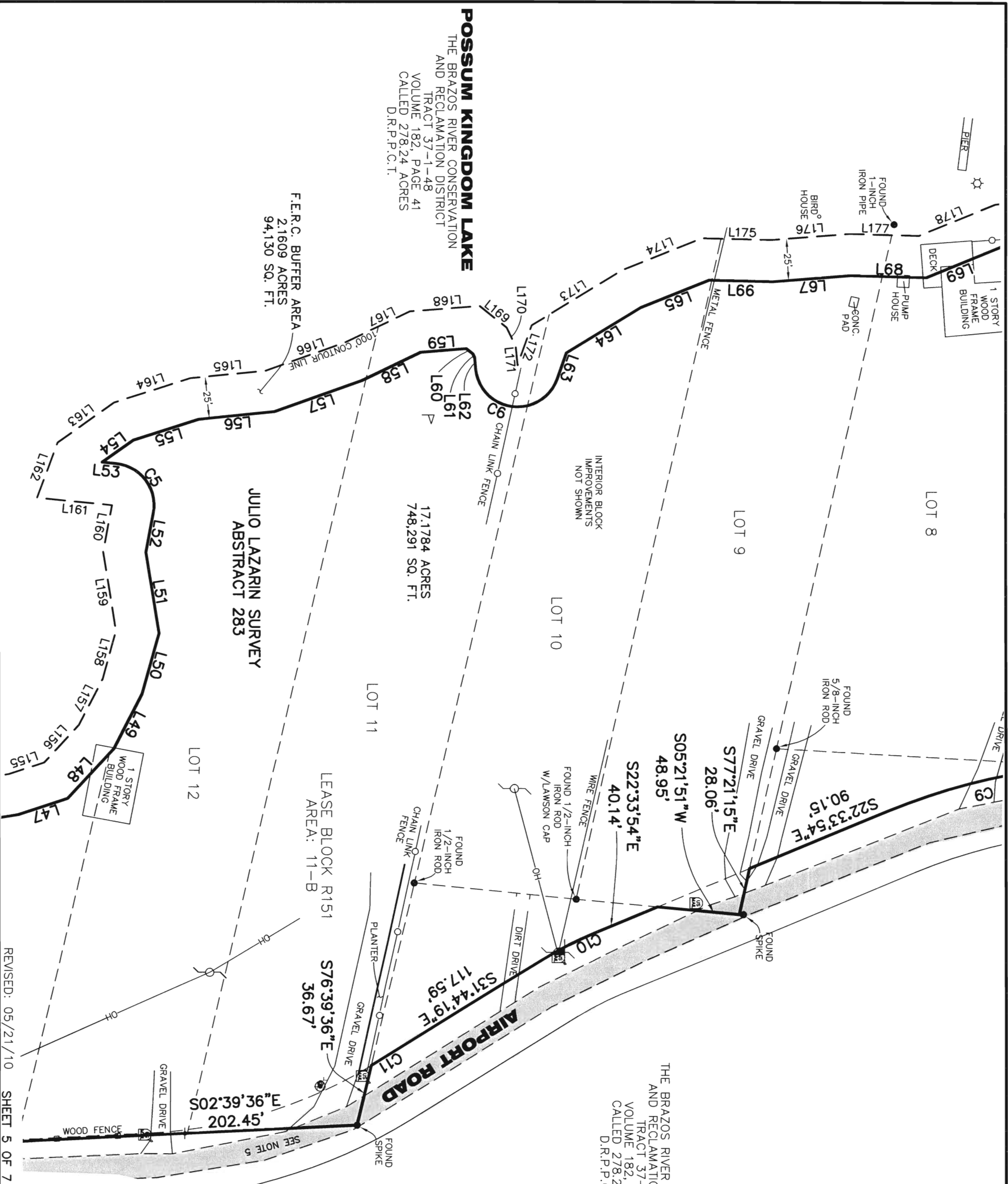
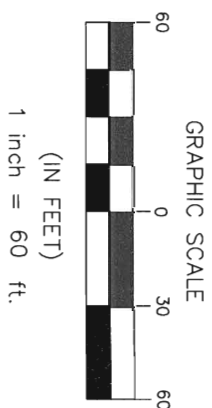
202.45'

S02°39'36"E

117.59'

S31°44'19"E

THE BRAZOS RIVER CONSERVATION  
 AND RECLAMATION DISTRICT  
 TRACT 37-1-48  
 VOLUME 182, PAGE 41  
 CALLED 278.24 ACRES  
 D.R.P.C.T.



**AECOM**

AECOM USA GROUP, INC.  
 1200 SUMMIT AVENUE, SUITE 600  
 FORT WORTH, TEXAS 76102  
 WWW.AECOM.COM  
 817.698.6770

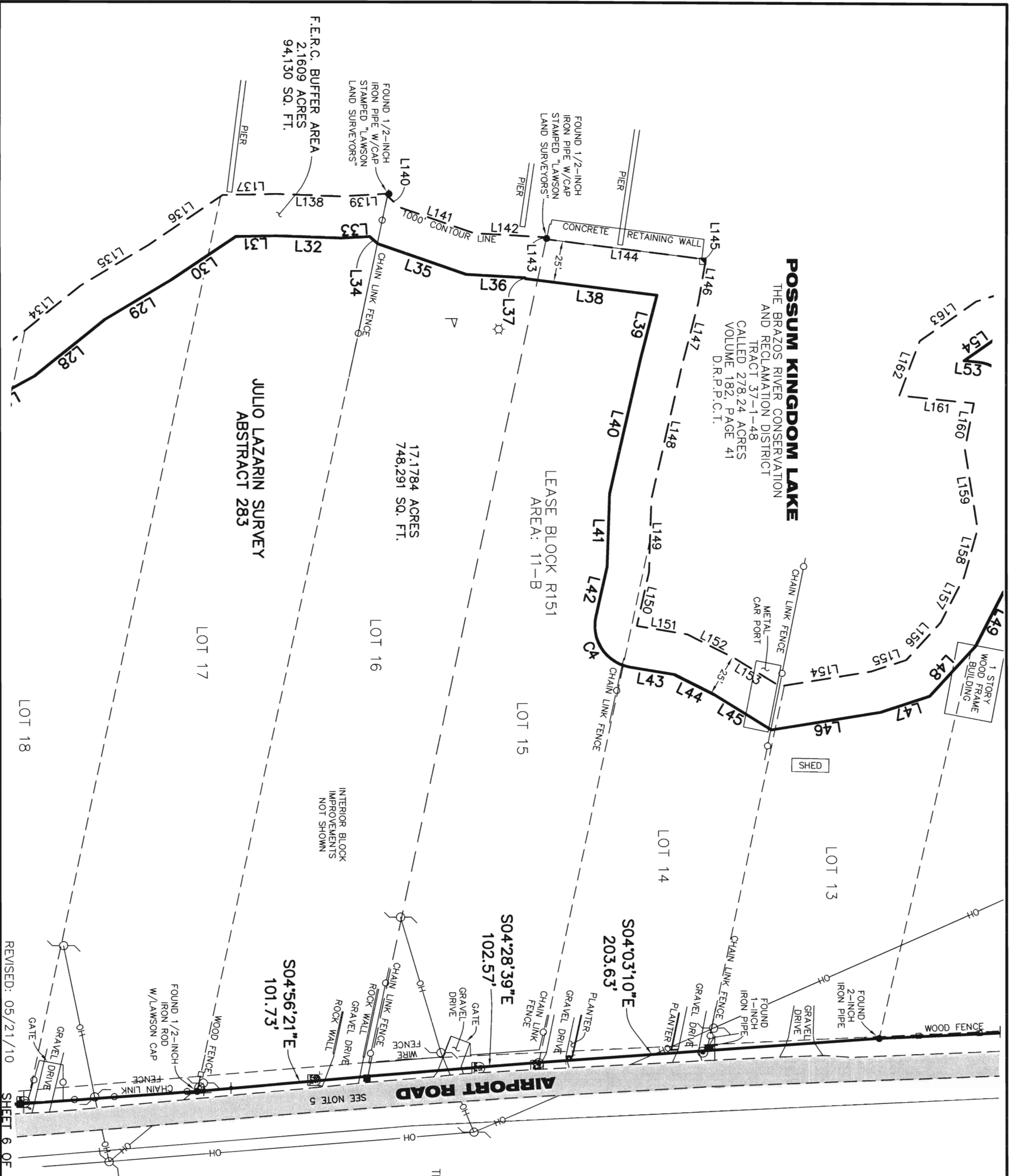
Date: 01/21/10 Project No. 60102581

STANDARD LAND SURVEY  
 OF  
**19.3393 ACRES**  
 SITUATED IN TRACT 37-1-48  
 AREA 11-B, LOTS 1-21  
 POSSUM KINGDOM LAKE  
 JULIO LAZARIN SURVEY  
 ABSTRACT 283  
 PALO PINTO COUNTY, TEXAS

REVISED: 05/21/10 SHEET 5 OF 7

NO PART OR PARTS OF THIS DRAWING MAY BE REPRODUCED OR TRANSMITTED IN ANY WAY OR FORM (ELECTRONIC, MECHANICAL, PHOTOCOPIING, OR OTHERWISE) WITHOUT THE EXPRESS WRITTEN PERMISSION OF AECOM.

NO PART OR PARTS OF THIS DRAWING MAY BE REPRODUCED OR TRANSMITTED IN ANY WAY OR FORM (ELECTRONIC, MECHANICAL, PHOTOCOPIING, OR OTHERWISE) WITHOUT THE EXPRESS WRITTEN PERMISSION OF AECOM.



**POSSUM KINGDOM LAKE**  
 THE BRAZOS RIVER CONSERVATION  
 AND RECLAMATION DISTRICT  
 TRACT 37-1-48  
 CALLED 278.24 ACRES  
 VOLUME 182, PAGE 41  
 D.R.P.P.C.T.

**JULIO LAZARIN SURVEY**  
 ABSTRACT 283

17,178.4 ACRES  
 748,291 SQ. FT.

LEASE BLOCK R151  
 AREA: 11-B

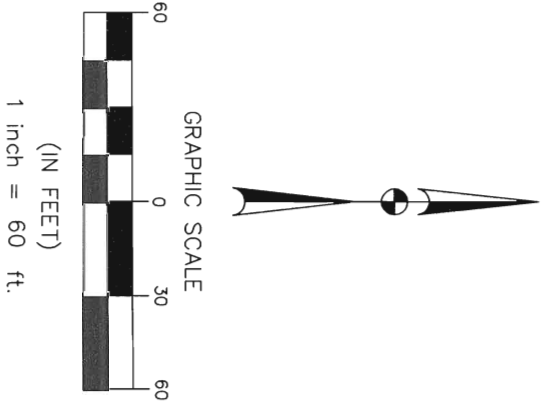
**AIRPORT ROAD**

REVISED: 05/21/10

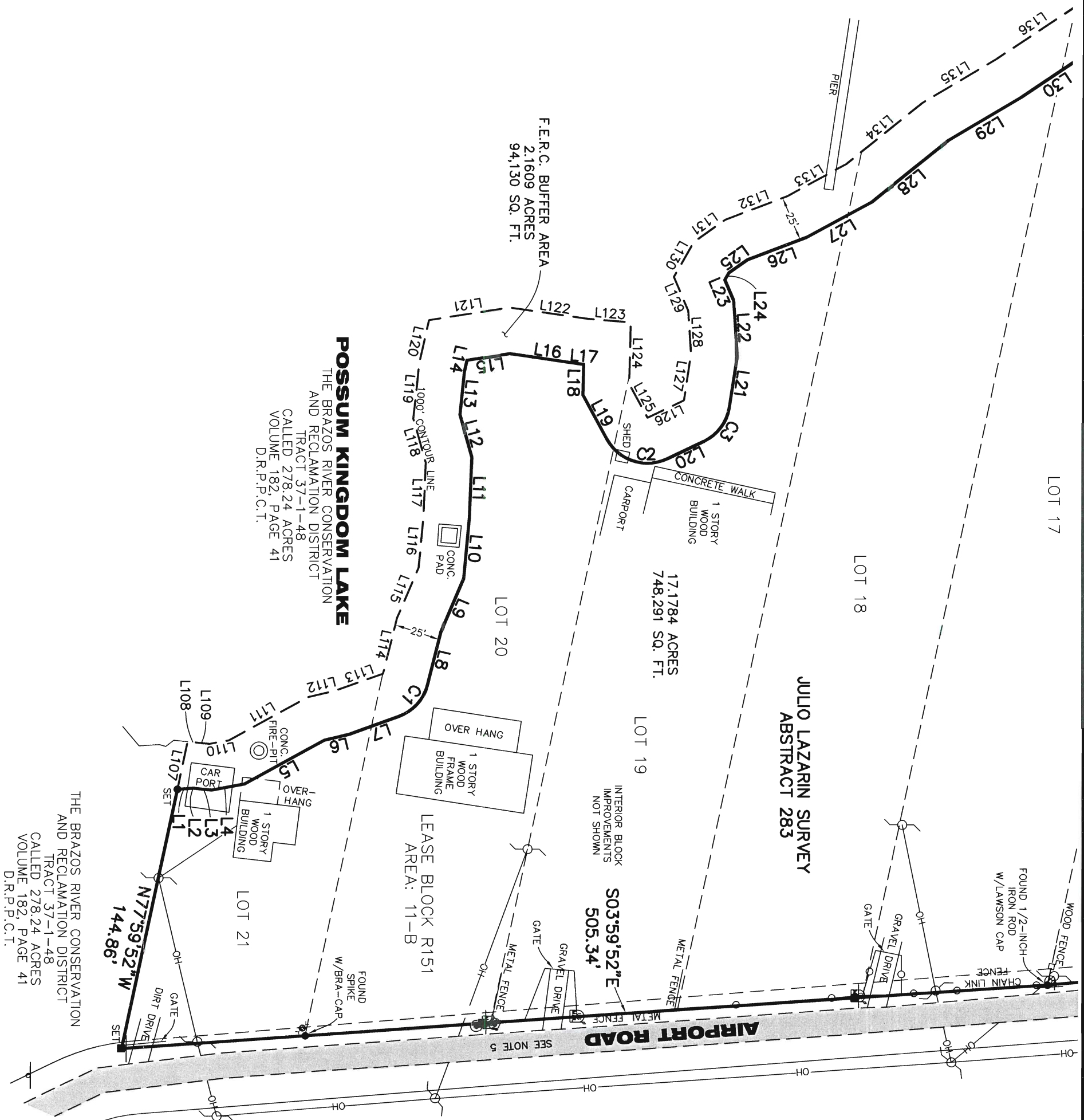
DATE: 01/21/10  
 PROJECT NO. 60102581  
**AECOM**  
 AECOM USA GROUP, INC.  
 1200 SUMMIT AVENUE, SUITE 600  
 FORT WORTH, TEXAS 76102  
 WWW.AECOM.COM  
 817.698.6770

STANDARD LAND SURVEY  
 OF  
**19.3393 ACRES**  
 SITUATED IN TRACT 37-1-48  
 AREA 11-B, LOTS 1-21  
 POSSUM KINGDOM LAKE  
 JULIO LAZARIN SURVEY  
 ABSTRACT 283  
 PALO PINTO COUNTY, TEXAS

THE BRAZOS RIVER CONSERVATION  
 AND RECLAMATION DISTRICT  
 TRACT 37-1-48  
 CALLED 278.24 ACRES  
 VOLUME 182, PAGE 41  
 D.R.P.P.C.T.



NO PART OR PARTS OF THIS DRAWING MAY BE REPRODUCED OR RETRANSMITTED IN ANY WAY OR FORM (ELECTRONIC, MECHANICAL, PHOTOCOPIING, OR OTHERWISE) WITHOUT THE EXPRESS WRITTEN PERMISSION OF AECOM.



**POSSUM KINGDOM LAKE**  
 THE BRAZOS RIVER CONSERVATION  
 AND RECLAMATION DISTRICT  
 TRACT 37-1-48  
 CALLED 278.24 ACRES  
 VOLUME 182, PAGE 41  
 D.R.P.C.T.

**JULIO LAZARIN SURVEY**  
**ABSTRACT 283**

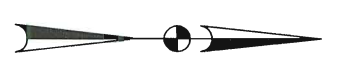
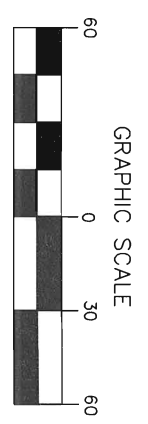
17,178.4 ACRES  
 748,291 SQ. FT.

LEASE BLOCK R151  
 AREA: 11-B

S03°59'52"E  
 505.34'

N77°59'52"W  
 144.86'

THE BRAZOS RIVER CONSERVATION  
 AND RECLAMATION DISTRICT  
 TRACT 37-1-48  
 CALLED 278.24 ACRES  
 VOLUME 182, PAGE 41  
 D.R.P.C.T.



(IN FEET)  
 1 inch = 60 ft.

THE BRAZOS RIVER CONSERVATION  
 AND RECLAMATION DISTRICT  
 TRACT 37-1-48  
 CALLED 278.24 ACRES  
 VOLUME 182, PAGE 41  
 D.R.P.C.T.

STANDARD LAND SURVEY  
 OF  
**19.3393 ACRES**  
 SITUATED IN TRACT 37-1-48  
 AREA 11-B, LOTS 1-21  
 POSSUM KINGDOM LAKE  
 JULIO LAZARIN SURVEY  
 ABSTRACT 283  
 PALO PINTO COUNTY, TEXAS

**AECOM**

AECOM USA GROUP, INC.  
 1200 SUMMIT AVENUE, SUITE 600  
 FORT WORTH, TEXAS 76102  
 WWW.AECOM.COM  
 817.698.6770

Date: 01/21/10 Project No. 60102581 60052528 R151By.dwg