

VICINITY MAP  
NOT TO SCALE

- LEGEND
- = LEASE CORNER MARKER  
"AS NOTED" (SEE NOTE 3)
  - OH = OVERHEAD LINES
  - = POWER POLE
  - ⊙ = WATER METER
  - ⊕ = IRRIGATION CONTROL VALVE
  - ☐ = MAIL BOX

ACREAGE TABLE  
LEASE BLOCK: 7.3765 ACRES  
E.F.R.C. BUFFER AREA: 1.3782 ACRES  
SURVEY BLOCK: 8.7547 ACRES TOTAL

NOTES:  
1) BEARINGS AND COORDINATES SHOWN HEREON ARE BASED ON THE NORTH AMERICAN DATUM OF 1983, TEXAS COORDINATE SYSTEM, NORTH CENTRAL ZONE (4202).

2) 1,000-FOOT CONTOUR ELEVATION OF POSSUM KINGDOM LAKE IS DETERMINED BASED ON MEASUREMENTS FROM THE TOP OF THE EXISTING SPILLWAY CREST GATES AT THE MORRIS SHEPPARD DAM BEING AT ELEVATION 1,000-FEET ABOVE MEAN SEA LEVEL AS NOTED IN FEDERAL POWER COMMISSION REPORT PROJECT NO. 1490 - TEXAS ON JUNE 2, 1938.

3) SET = 5/8" IRON ROD W/CAP STAMPED "AECOM" SET; D.R.P.C.T. = DEED RECORDS, PALO PINTO COUNTY, TEXAS; P.R.P.C.T. = PLAT RECORDS, PALO PINTO COUNTY, TEXAS; F.E.R.C. = FEDERAL ENERGY REGULATORY COMMISSION; J.R.P.C.T. = JUDGEMENT RECORDS, PALO PINTO COUNTY, TEXAS. LFS = 5/8" IRON ROD W/CAP STAMPED "LINKFIELD RPLS 5087" FOUND.

4) METES AND BOUNDS DESCRIPTIONS TO ACCOMPANY THIS SURVEY.

5) LOCATION, POSITION AND GEOMETRY OF ROAD RIGHTS-OF-WAY SHOWN AND DESCRIBED HEREON BASED ON SURVEYS PROVIDED BY LINK FIELD SERVICES. NO DEED OF RECORD HAS BEEN RECORDED AT THIS TIME FOR SAME UNLESS NOTED OTHERWISE.

6) IMPROVEMENTS SHOWN HEREON TIED FEBRUARY 2010.

SURVEYORS CERTIFICATE

TO: BRAZOS RIVER AUTHORITY, PATTERSON PK LAND PARTNERSHIP, LTD., AND HERITAGE TITLE COMPANY OF AUSTIN, INC.

I, MUNIR ODHWANI, A REGISTERED PROFESSIONAL LAND SURVEYOR IN THE STATE OF TEXAS, REGISTRATION NUMBER 5996, HEREBY STATE THAT A SURVEY OF THE REAL PROPERTY DESCRIBED IN SEPARATE LEGAL DESCRIPTION AS NOTED HEREON, WAS ACTUALLY MADE UPON THE GROUND UNDER MY DIRECTION AND SUPERVISION, AND THAT TO THE BEST OF MY PROFESSIONAL KNOWLEDGE AND BELIEF, THE INFORMATION SHOWN HEREON IS CORRECT AS DETERMINED BY SAID SURVEY.

THIS SURVEY SUBSTANTIALLY COMPLIES WITH THE CURRENT TEXAS SOCIETY OF PROFESSIONAL SURVEYORS STANDARDS AND SPECIFICATIONS FOR A CATEGORY 1B, CONDITION II SURVEY.

MUNIR ODHWANI  
REGISTERED PROFESSIONAL LAND SURVEYOR  
TEXAS REGISTRATION NO. 5996  
DATE: MAY 21, 2010



STANDARD LAND SURVEY  
OF  
**8.7547 ACRES**

SITUATED IN TRACT 38-1-50  
AREA 11, LOTS 1-16  
POSSUM KINGDOM LAKE  
R.R. WILLIAMS SURVEY  
ABSTRACT 896  
PALO PINTO COUNTY, TEXAS

**AECOM**  
AECOM USA GROUP, INC.  
1200 SUMMIT AVENUE, SUITE 600  
FORT WORTH, TEXAS 76102  
WWW.AECOM.COM  
817.698.6770

LINE	BEARING	DISTANCE
L1	N21°20'19"W	25.08'
L2	N31°20'19"W	20.51'
L3	N10°05'57"W	18.80'
L4	N1°31'04.6"W	18.17'
L5	N00°21'45"E	11.78'
L6	N34°33'51"E	4.79'
L7	S78°42'47"E	20.52'
L8	N52°03'22"E	11.08'
L9	S77°18'36"E	16.24'
L10	N78°55'17"E	29.49'
L11	N55°51'25"E	32.74'
L12	N14°46'24"E	28.91'
L13	N14°38'14"E	25.29'
L14	N11°38'00"W	1.57'
L15	N75°56'07"E	7.60'
L16	N41°55'21"E	40.67'
L17	N27°43'01"W	26.15'
L18	N45°37'16"W	10.03'
L19	N58°35'07"E	20.71'
L20	N05°36'24"W	23.83'
L21	N32°54'50"E	9.82'
L22	N05°23'56"W	15.35'
L23	N27°52'40"E	6.97'
L24	N40°53'47"E	1.84'
L25	S74°58'20"E	5.44'
L26	N10°45'03"E	12.78'
L27	N08°52'31"E	11.63'
L28	N30°57'13"E	9.90'
L29	N40°38'11"E	18.00'
L30	N28°42'01"E	28.17'
L31	N40°47'23"E	38.99'
L32	N35°01'31"E	21.62'
L33	S72°35'15"E	1.69'
L34	N44°18'04"E	45.20'
L35	N24°40'48"E	33.05'
L36	N16°47'45"E	21.39'
L37	N19°04'10"E	41.22'
L38	N41°54'09"W	32.97'
L39	N19°34'07"E	6.84'
L40	N33°03'33"E	16.30'
L41	N29°39'04"E	2.94'
L42	S89°12'23"E	11.43'
L43	N67°44'48"W	13.57'
L44	N28°50'22"E	3.13'
L45	N31°09'50"E	31.18'
L46	N00°17'08"W	15.31'

LINE	BEARING	DISTANCE
L47	S86°40'34"E	7.10'
L48	N50°26'19"E	1.10'
L49	S59°17'10"E	16.74'
L50	N33°44'54"E	10.98'
L51	S80°50'31"E	21.38'
L52	N60°44'22"E	42.36'
L53	N35°06'09"E	38.90'
L54	N52°58'16"E	15.60'
L55	N31°10'17"E	11.39'
L56	N31°00'53"E	13.46'
L57	N45°29'26"E	19.54'
L58	N19°51'07"E	19.42'
L59	N26°23'41"E	18.63'
L60	N26°15'00"E	48.06'
L61	N18°10'00"E	29.28'
L62	N10°52'40"E	12.59'
L63	N06°27'17"E	12.48'
L64	N04°05'15"E	17.25'
L65	N16°24'28"W	24.04'
L66	N45°05'04"W	23.66'
L67	N56°16'49"W	21.14'
L68	N58°53'01"W	23.14'
L69	N76°58'54"W	1.26'
L70	N06°32'31"W	5.21'
L71	N63°40'46"E	6.16'
L72	N30°06'50"E	39.36'
L73	N67°04'49"E	14.57'
L74	N54°05'38"E	41.22'
L75	N45°30'00"E	11.45'
L76	S67°20'18"E	59.85'
L77	N27°05'45"E	36.69'
L78	N54°17'00"W	16.51'
L79	N55°16'50"W	36.90'
L80	N27°26'35"E	11.27'
L81	N18°11'48"E	10.23'
L82	S71°01'57"E	44.99'
L83	N19°03'30"E	107.68'
L84	N49°22'31"E	23.26'
L85	N74°58'49"E	32.05'
L86	S18°04'54"W	23.07'
L87	S51°22'39"E	44.50'
L88	S61°49'24"E	61.40'
L89	S78°03'17"E	22.65'
L90	S62°42'16"E	38.23'
L91	N42°01'32"E	44.73'
L92	N55°06'57"E	29.98'

LINE	BEARING	DISTANCE
L93	N37°58'24"E	19.52'
L94	N49°35'09"E	11.63'
L95	N58°04'24"E	6.63'
L96	N59°17'42"W	44.04'
L97	N31°20'19"W	11.00'
L98	N10°05'57"W	22.81'
L99	N13°10'46"W	20.47'
L100	N00°21'45"E	22.44'
L101	N34°33'51"E	28.94'
L102	S78°42'47"E	25.53'
L103	N52°03'22"E	11.45'
L104	S77°18'36"E	22.80'
L105	N78°55'17"E	19.13'
L106	N55°51'25"E	18.27'
L107	N14°46'24"E	19.51'
L108	N14°38'14"E	19.43'
L109	N11°38'00"W	19.70'
L110	N75°56'07"E	23.91'
L111	N41°55'21"E	15.63'
L112	N27°43'01"W	4.83'
L113	N45°37'16"W	32.81'
L114	N39°34'57"E	16.09'
L115	N58°35'07"E	20.61'
L116	N05°36'24"W	18.58'
L117	N39°56'26"E	8.61'
L118	N05°23'56"W	14.13'
L119	N27°52'40"E	17.29'
L120	N40°53'47"E	20.35'
L121	S74°58'20"E	21.10'
L122	N10°45'03"E	12.37'
L123	N08°52'31"E	16.10'
L124	N30°57'13"E	16.90'
L125	N40°38'11"E	17.50'
L126	N28°42'01"E	28.20'
L127	N40°47'23"E	40.38'
L128	N35°01'31"E	22.15'
L129	N17°42'03"E	15.73'
L130	S72°35'15"E	9.54'
L131	N44°18'04"E	25.52'
L132	N24°40'48"E	27.00'
L133	N16°47'45"E	20.16'
L134	N19°04'10"E	26.99'
L135	N41°54'09"W	13.93'
L136	N73°59'48"W	14.13'
L137	N10°05'34"E	16.73'
L138	N19°34'07"E	18.21'

LINE	BEARING	DISTANCE
L139	N33°03'33"E	18.51'
L140	N29°39'04"E	16.97'
L141	S89°12'23"E	26.20'
L142	N67°44'48"W	16.53'
L143	N56°18'47"W	16.21'
L144	N15°15'43"W	12.61'
L145	N28°50'22"E	18.39'
L146	N31°09'50"E	24.64'
L147	N00°17'08"W	23.87'
L148	N57°31'08"E	18.80'
L149	S86°40'34"E	7.97'
L150	N50°26'19"E	8.87'
L151	S59°17'10"E	10.63'
L152	N33°44'54"E	8.52'
L153	S61°59'08"E	14.61'
L154	S80°50'31"E	12.74'
L155	N60°44'22"E	27.96'
L156	N35°06'09"E	37.14'
L157	N52°58'16"E	19.53'
L158	N53°55'52"W	32.88'
L159	N50°54'22"E	18.37'
L160	N56°53'01"E	8.18'
L161	N31°10'17"E	8.80'
L162	N31°00'53"E	16.60'
L163	N45°29'26"E	17.03'
L164	N19°51'07"E	15.16'
L165	N26°23'41"E	20.03'
L166	N26°15'00"E	46.26'
L167	N18°10'00"E	25.92'
L168	N10°52'40"E	10.04'
L169	N06°27'17"E	10.99'
L170	N04°05'15"E	12.21'
L171	N16°24'28"W	13.13'
L172	N45°05'04"W	14.82'
L173	N56°16'49"W	18.13'
L174	N58°53'01"W	18.59'
L175	N76°58'54"W	3.07'
L176	N59°51'47"W	26.22'
L177	N29°51'43"E	16.61'
L178	N06°32'31"W	15.37'
L179	N63°40'46"E	16.20'
L180	N30°06'50"E	49.73'
L181	S57°18'16"E	6.96'
L182	N67°04'49"E	8.51'
L183	N54°05'38"E	36.49'
L184	N45°30'00"E	18.50'

LINE	BEARING	DISTANCE
L185	N54°31'02"W	30.14'
L186	N32°58'07"E	1.14'
L187	S63°35'41"E	22.78'
L188	S69°00'33"E	27.38'
L189	S67°18'40"E	18.95'
L190	N07°20'50"E	7.24'
L191	S57°43'57"E	42.09'
L192	N27°05'45"E	36.69'
L193	N54°17'00"W	16.29'
L194	N55°16'50"W	44.70'
L195	N67°45'16"W	13.94'
L196	N27°26'35"E	34.29'
L197	N18°11'48"E	33.55'
L198	S71°01'57"E	45.36'
L199	N19°03'30"E	89.49'
L200	N49°22'31"E	35.71'
L201	N74°58'49"E	49.36'
L202	N72°41'35"E	39.62'
L203	S24°11'02"W	31.85'
L204	S18°04'54"W	24.31'
L205	S51°22'39"E	24.88'
L206	S61°49'24"E	55.55'
L207	S78°03'17"E	22.45'
L208	S62°42'16"E	22.32'
L209	N42°01'32"E	28.32'
L210	N55°06'57"E	29.08'
L211	N37°58'24"E	18.29'
L212	N49°35'09"E	11.93'
L213	S59°06'25"E	27.42'

CURVE TABLE					
CURVE	LENGTH	DELTA	RADIUS	CHORD BEARING	CHORD
C1	41.14	94°16'39"	25.00	N57°53'22"E	36.65'
C2	69.18	158°32'25"	25.00	N11°31'24"E	49.13'
C3	46.79	107°13'58"	25.00	N00°38'44"W	40.25'
C4	37.36	85°37'29"	25.00	N69°54'29"E	33.98'
C5	35.51	81°22'45"	25.00	N13°35'38"W	32.60'

STANDARD LAND SURVEY  
 OF  
**8.7547 ACRES**  
 SITUATED IN TRACT 38-1-50  
 AREA 11, LOTS 1-16  
 POSSUM KINGDOM LAKE  
 R.R. WILLIAMS SURVEY  
 ABSTRACT 896  
 PALO PINTO COUNTY, TEXAS

**AECOM**  
 AECOM USA GROUP, INC.  
 1200 SUMMIT AVENUE, SUITE 600  
 FORT WORTH, TEXAS 76102  
 WWW.AECOM.COM  
 817.698.6770

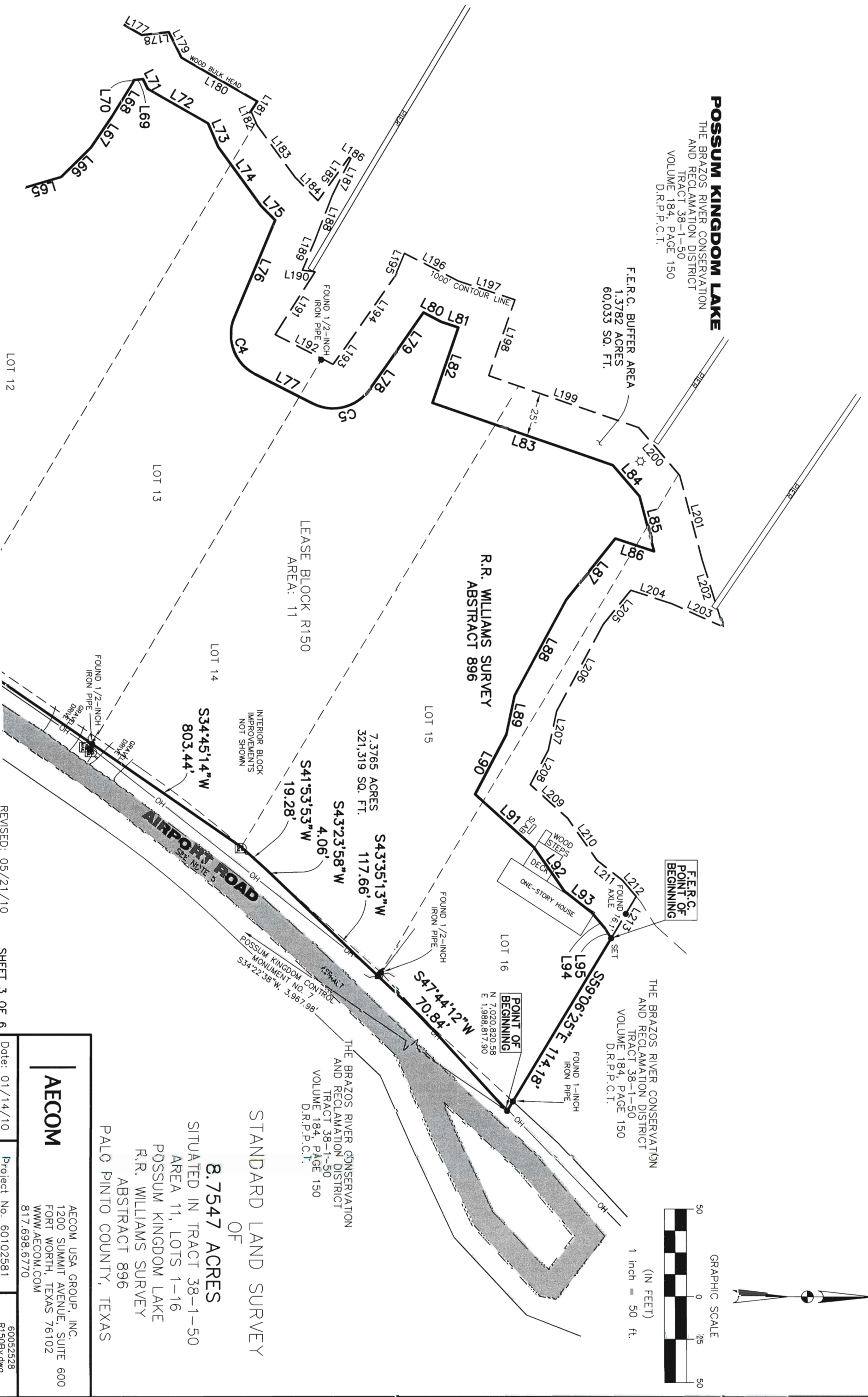
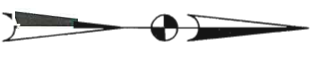
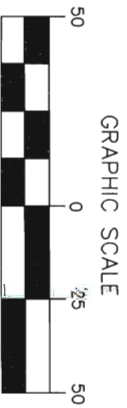
Date: 01/14/10 Project No. 60102581 60052528 R150BY.dwg

**POSSUM KINGDOM LAKE**  
 THE BRAZOS RIVER CONSERVATION  
 AND RECLAMATION DISTRICT  
 TRACT 38-1-50  
 VOLUME 184, PAGE 150  
 D.R.P.P.C.T.

F.E.R.C. BUFFER AREA  
 1,3782 ACRES  
 60,033 SQ. FT.

F.E.R.C. POINT OF BEGINNING

THE BRAZOS RIVER CONSERVATION  
 AND RECLAMATION DISTRICT  
 TRACT 38-1-50  
 VOLUME 184, PAGE 150  
 D.R.P.P.C.T.



LEASE BLOCK R150  
 AREA: 11

R.R. WILLIAMS SURVEY  
 ABSTRACT 896

7.3765 ACRES  
 321,319 SQ. FT.

334°45'14"W  
 803.44'

54°53'53"W  
 19.28'

54°32'58"W  
 4.06'

54°35'13"W  
 117.66'

54°7'44"12"W  
 70.84'

POINT OF BEGINNING  
 N 7.020, 820.58  
 E 1,988, 817.90

55°9'06"25"E 114.18'

THE BRAZOS RIVER CONSERVATION  
 AND RECLAMATION DISTRICT  
 TRACT 38-1-50  
 VOLUME 184, PAGE 150  
 D.R.P.P.C.T.

STANDARD LAND SURVEY  
 OF  
**8.7547 ACRES**  
 SITUATED IN TRACT 38-1-50  
 AREA 11, LOTS 1-16  
 POSSUM KINGDOM LAKE  
 R.R. WILLIAMS SURVEY  
 ABSTRACT 896  
 PALO PINTO COUNTY, TEXAS

**AECOM**

AECOM USA GROUP, INC.  
 1200 SUMMIT AVENUE, SUITE 600  
 FORT WORTH, TEXAS 76102  
 WWW.AECOM.COM  
 817.698.6770

REVISED: 05/21/10

SHEET 3 OF 6

Date: 01/14/10

Project No. 60102581

60052528  
 R150By.dwg

NO PART OF THIS DRAWING MAY BE REPRODUCED OR TRANSMITTED IN ANY WAY OR FORM (ELECTRONIC, MECHANICAL, PHOTOCOPYING, OR OTHERWISE) WITHOUT THE EXPRESS WRITTEN PERMISSION OF AECOM.

LOT 12

LOT 13

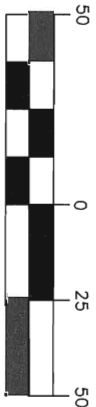
LOT 14

LOT 15

LOT 16



GRAPHIC SCALE



(IN FEET)  
1 inch = 50 ft.

# POSSUM KINGDOM LAKE

THE BRAZOS RIVER CONSERVATION  
AND RECLAMATION DISTRICT  
TRACT 38-1-50  
VOLUME 184, PAGE 150  
D.R.P.P.C.T.

F.E.R.C. BUFFER AREA  
1.3782 ACRES  
60,033 SQ. FT.

7.3765 ACRES  
321,319 SQ. FT.

R.R. WILLIAMS SURVEY  
ABSTRACT 896

S34.45'14"W  
803.44'

THE BRAZOS RIVER (CONSERVATION  
AND RECLAMATION DISTRICT  
TRACT 38-1-50  
VOLUME 184, PAGE 150  
D.R.P.P.C.T.

## STANDARD LAND SURVEY OF

### 8.7547 ACRES

SITUATED IN TRACT 38-1-50  
AREA 11, LOTS 1-16  
POSSUM KINGDOM LAKE  
R.R. WILLIAMS SURVEY  
ABSTRACT 896  
PALO PINTO COUNTY, TEXAS

# AECOM

AECOM USA GROUP, INC.  
1200 SUMMIT AVENUE, SUITE 600  
FORT WORTH, TEXAS 76102  
WWW.AECOM.COM  
817.698.6770

Date: 01/14/10

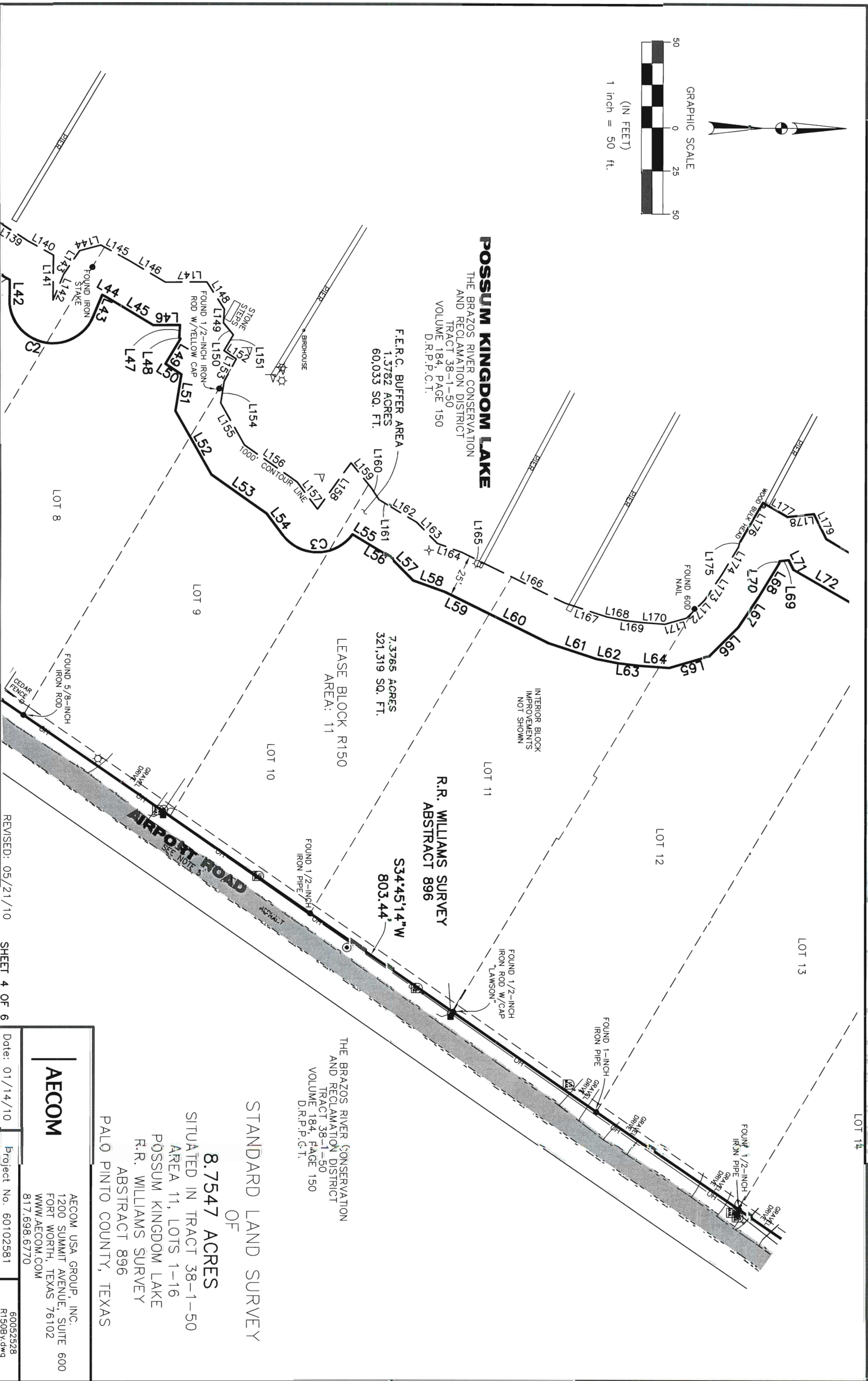
Project No. 60102581

60052528  
R150By.dwg

REVISED: 05/21/10

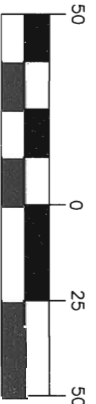
SHEET 4 OF 6

NO PART OR PARTS OF THIS DRAWING MAY BE REPRODUCED OR RETRANSMITTED IN ANY WAY OR FORM (ELECTRONIC, MECHANICAL, PHOTOCOPYING, OR OTHERWISE) WITHOUT THE EXPRESS WRITTEN PERMISSION OF AECOM.





GRAPHIC SCALE



(IN FEET)  
1 inch = 50 ft.

# POSSUM KINGDOM LAKE

THE BRAZOS RIVER CONSERVATION  
AND RECLAMATION DISTRICT  
TRACT 38-1-50  
VOLUME 184, PAGE 150  
D.R.P.C.T.

F.E.R.C. BUFFER AREA  
1.3782 ACRES  
60,033 SQ. FT.

FOUND 1/2-INCH  
IRON PIPE

BIRDHOUSE  
FOUND 1/2-INCH  
IRON PIPE

7.3765 ACRES  
321,319 SQ. FT.

R.R. WILLIAMS SURVEY  
ABSTRACT 896

$S34.45'14''W$   
803.44'

INTERIOR BLOCK  
IMPROVEMENTS  
NOT SHOWN

LEASE BLOCK R150  
AREA: 11

$S30.44'18''W$   
605.80'

THE BRAZOS RIVER CONSERVATION  
AND RECLAMATION DISTRICT  
TRACT 38-1-50  
VOLUME 184, PAGE 150  
D.R.P.C.T.

STANDARD LAND SURVEY  
OF

**8.7547 ACRES**

SITUATED IN TRACT 38-1-50  
AREA 11, LOTS 1-16  
POSSUM KINGDOM LAKE  
R.R. WILLIAMS SURVEY  
ABSTRACT 896  
PALO PINTO COUNTY, TEXAS

**AECOM**

AECOM USA GROUP, INC.  
1200 SUMMIT AVENUE, SUITE 600  
FORT WORTH, TEXAS 76102  
WWW.AECOM.COM  
817.698.6770

REVISED: 05/21/10 SHEET 5 OF 6

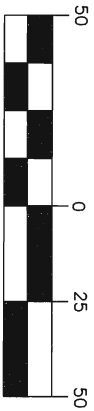
Date: 01/14/10

Project No. 60102581

60052528  
R150By.dwg



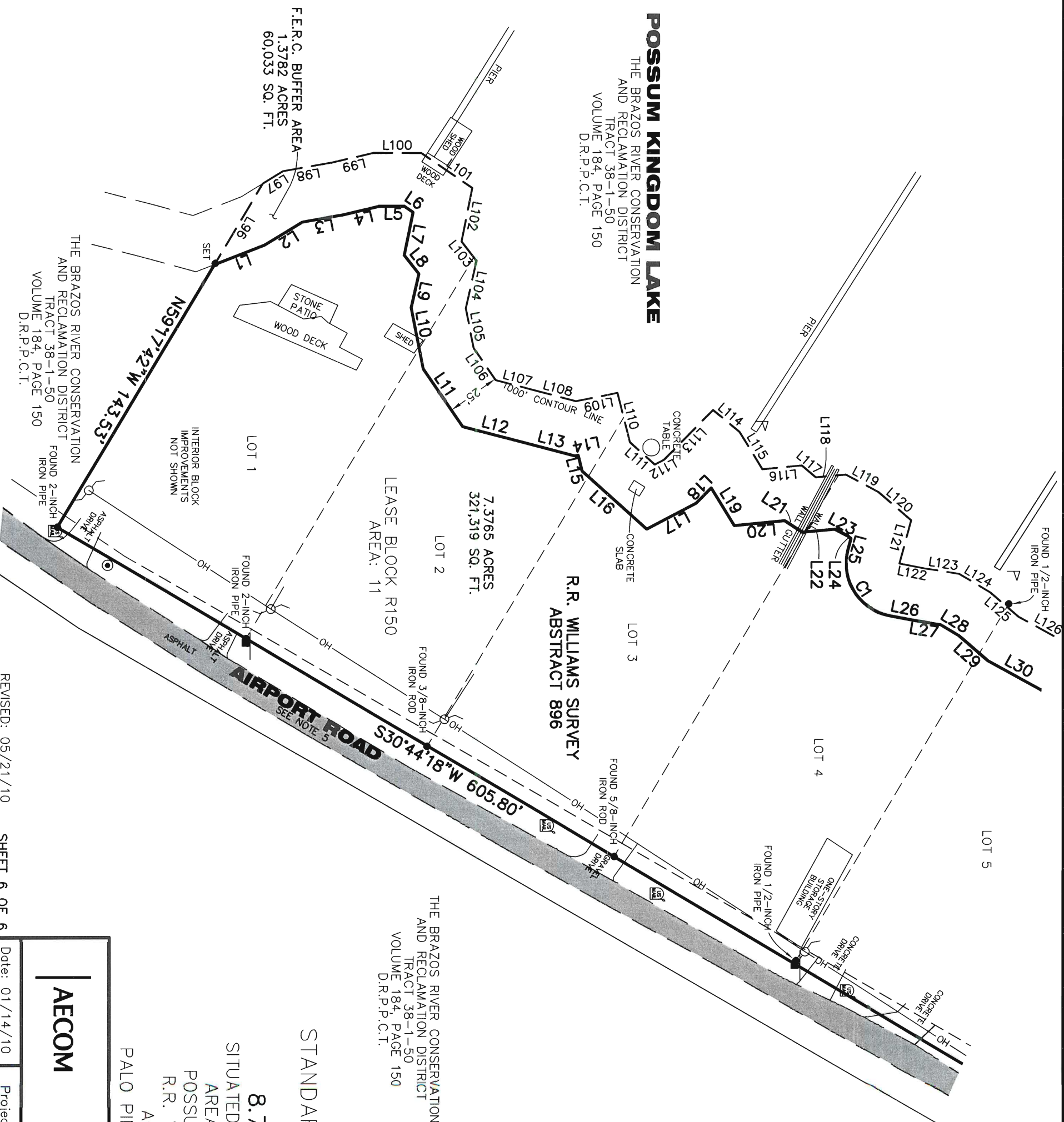
GRAPHIC SCALE



(IN FEET)  
1 inch = 50 ft.

### POSSUM KINGDOM LAKE

THE BRAZOS RIVER CONSERVATION  
AND RECLAMATION DISTRICT  
TRACT 38-1-50  
VOLUME 184, PAGE 150  
D.R.P.P.C.T.



THE BRAZOS RIVER CONSERVATION  
AND RECLAMATION DISTRICT  
TRACT 38-1-50  
VOLUME 184, PAGE 150  
D.R.P.P.C.T.

STANDARD LAND SURVEY  
OF  
**8.7547 ACRES**  
SITUATED IN TRACT 38-1-50  
AREA 11, LOTS 1-16  
POSSUM KINGDOM LAKE  
R.R. WILLIAMS SURVEY  
ABSTRACT 896  
PALO PINTO COUNTY, TEXAS

<b>AECOM</b>	AECOM USA GROUP, INC.
	1200 SUMMIT AVENUE, SUITE 600 FORT WORTH, TEXAS 76102 WWW.AECOM.COM 817.698.6770
Date: 01/14/10	Project No. 60102581
REVISED: 05/21/10	SHEET 6 OF 6

NO PART OR PARTS OF THIS DRAWING MAY BE REPRODUCED OR TRANSMITTED IN ANY WAY OR FORM (ELECTRONIC, MECHANICAL, PHOTOCOPIING, OR OTHERWISE) WITHOUT THE EXPRESS WRITTEN PERMISSION OF AECOM.