

VICINITY MAP
NOT TO SCALE

- LEGEND**
- = LEASE CORNER MARKER
"AS NOTED"
 - OH = OVERHEAD LINES
 - = POWER POLE
 - ⊙ = POST
 - ☆ = LIGHT
 - ⊙ = WATER METER

ACREAGE TABLE	
LEASE BLOCK:	4.2383 ACRES
F.E.R.C. BUFFER AREA:	0.6035 OF ONE ACRE
SURVEY BLOCK:	4.8418 ACRES TOTAL

NOTES:

- 1) BEARINGS AND COORDINATES SHOWN HEREON ARE BASED ON THE NORTH AMERICAN DATUM OF 1983, TEXAS COORDINATE SYSTEM, NORTH CENTRAL ZONE (4202).
- 2) 1,000-FOOT CONTOUR ELEVATION OF POSSUM KINGDOM LAKE IS DETERMINED BASED ON MEASUREMENTS FROM THE TOP OF THE EXISTING SPILLWAY CREST GATES AT THE MORRIS SHEPPARD DAM BEING AT ELEVATION 1,000-FEET ABOVE MEAN SEA LEVEL AS NOTED IN FEDERAL POWER COMMISSION REPORT PROJECT NO. 1490 - TEXAS ON JUNE 2, 1938.
- 3) SET = 5/8" IRON ROD W/CAP STAMPED "AECOM" SET; D.R.P.P.C.T.= DEED RECORDS, PALO PINTO COUNTY, TEXAS; P.R.P.P.C.T.= PLAT RECORDS, PALO PINTO COUNTY, TEXAS; F.E.R.C.= FEDERAL ENERGY REGULATORY COMMISSION; J.R.P.P.C.T.= JUDGMENT RECORDS, PALO PINTO COUNTY, TEXAS.
- 4) METES AND BOUNDS DESCRIPTIONS TO ACCOMPANY THIS SURVEY.
- 5) LOCATION OF ROAD AS PROVIDED BY LINK FIELD SERVICES, DATED OCTOBER 28, 2009, AS SHOWN SHADED HEREON.

SURVEYORS CERTIFICATE

TO: BRAZOS RIVER AUTHORITY, PATTERSON PK LAND PARTNERSHIP, LTD., AND HERITAGE TITLE COMPANY OF AUSTIN, INC.

I, MUNIR ODHWANI, A REGISTERED PROFESSIONAL LAND SURVEYOR IN THE STATE OF TEXAS, REGISTRATION NUMBER 5996, HEREBY STATE THAT A SURVEY OF THE REAL PROPERTY DESCRIBED IN SEPARATE LEGAL DESCRIPTION AS NOTED HEREON, WAS ACTUALLY MADE UPON THE GROUND UNDER MY DIRECTION AND SUPERVISION, AND THAT TO THE BEST OF MY PROFESSIONAL KNOWLEDGE AND BELIEF, THE INFORMATION SHOWN HEREON IS CORRECT AS DETERMINED BY SAID SURVEY.

THIS SURVEY SUBSTANTIALLY COMPLIES WITH THE CURRENT TEXAS SOCIETY OF PROFESSIONAL SURVEYORS STANDARDS AND SPECIFICATIONS FOR A CATEGORY 1B, CONDITION II SURVEY.

MUNIR ODHWANI
REGISTERED PROFESSIONAL LAND SURVEYOR
TEXAS REGISTRATION NO. 5996

DATE: FEBRUARY 12, 2010



LINE TABLE		
LINE	BEARING	DISTANCE
L1	N08°17'13"E	14.88'
L2	N04°59'05"W	31.60'
L3	N27°20'13"E	17.73'
L4	N35°31'49"E	19.09'
L5	N38°33'15"E	33.28'
L6	N36°56'02"E	37.98'
L7	N30°49'03"E	32.95'
L8	N38°53'24"E	34.67'
L9	N40°20'20"E	22.99'
L10	N51°16'13"E	24.23'
L11	N65°18'46"E	27.96'
L12	N79°42'42"E	25.67'
L13	N63°55'23"E	18.44'
L14	N71°10'11"E	24.75'
L15	S42°23'14"E	9.76'
L16	S86°11'27"E	53.36'
L17	N07°06'28"E	33.84'
L18	N11°43'53"E	25.48'
L19	N21°42'07"E	37.34'
L20	N18°36'44"E	32.61'
L21	N31°38'55"E	43.59'
L22	N09°32'22"W	38.86'
L23	N02°31'27"W	11.21'
L24	N16°19'45"W	26.99'
L25	N02°23'15"W	32.29'
L26	N13°45'49"W	33.33'
L27	N16°53'07"W	18.83'
L28	N02°54'57"W	16.52'
L29	N02°43'46"E	30.70'
L30	N05°27'15"E	32.71'
L31	N02°50'42"W	6.46'
L32	N53°25'22"E	14.87'
L33	N51°38'46"E	29.66'
L34	N37°13'30"E	26.67'
L35	N70°40'55"E	22.38'
L36	N57°17'18"E	27.38'
L37	N50°07'32"E	37.70'
L38	N32°05'28"E	30.38'
L39	N30°42'28"E	9.90'
L40	N64°58'21"E	2.59'
L41	N61°56'47"W	26.57'
L42	N08°17'13"E	2.99'

LINE TABLE		
LINE	BEARING	DISTANCE
L43	N04°59'05"W	27.06'
L44	N23°14'20"W	6.14'
L45	N27°20'13"E	30.36'
L46	N35°31'49"E	21.54'
L47	N38°33'15"E	33.59'
L48	N36°56'02"E	36.29'
L49	N30°49'03"E	33.37'
L50	N38°53'24"E	36.75'
L51	N40°20'20"E	25.70'
L52	N51°16'13"E	29.70'
L53	N65°18'46"E	34.20'
L54	N79°42'42"E	25.36'
L55	N63°55'23"E	16.55'
L56	N71°10'11"E	24.78'
L57	N47°23'17"E	16.44'
L58	S42°23'14"E	23.31'
L59	S86°11'27"E	19.71'
L60	N07°06'28"E	11.25'
L61	N11°43'53"E	28.67'
L62	N21°42'07"E	38.84'
L63	N18°36'44"E	34.79'
L64	N31°38'55"E	37.05'
L65	N09°32'22"W	31.00'
L66	N02°31'27"W	9.71'
L67	N16°19'45"W	27.02'
L68	N02°23'15"W	32.86'
L69	N13°45'49"W	30.16'
L70	N16°53'07"W	21.21'
L71	N02°54'57"W	20.82'
L72	N02°43'46"E	32.53'
L73	N05°27'15"E	31.50'
L74	N02°50'42"W	18.01'
L75	N53°25'22"E	27.85'
L76	N51°38'46"E	26.11'
L77	N37°13'30"E	31.02'
L78	N70°40'55"E	26.96'
L79	N57°17'18"E	22.88'
L80	N50°07'32"E	32.16'
L81	N32°05'28"E	26.11'
L82	N30°42'28"E	10.52'
L83	S61°56'19"E	26.49'

STANDARD LAND SURVEY
OF
4.8418 ACRES
SITUATED IN TRACT 40-1-21
AREA 10-A, LOTS 1-N, 1-S, 2-S, 2-N,
3, 4-N, 4-A, 4-S AND 5
POSSUM KINGDOM LAKE
JOHN F. SMITH SURVEY, ABSTRACT 410
PALO PINTO COUNTY, TEXAS

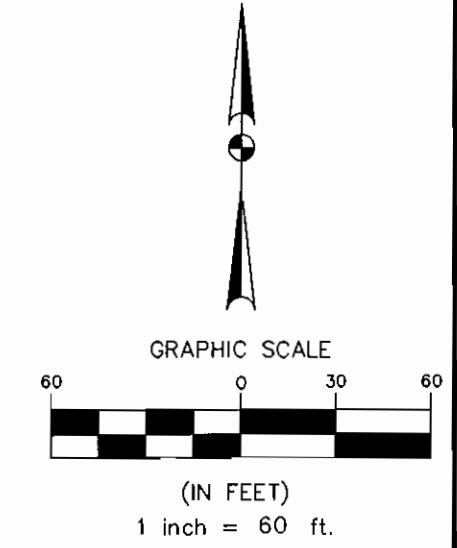
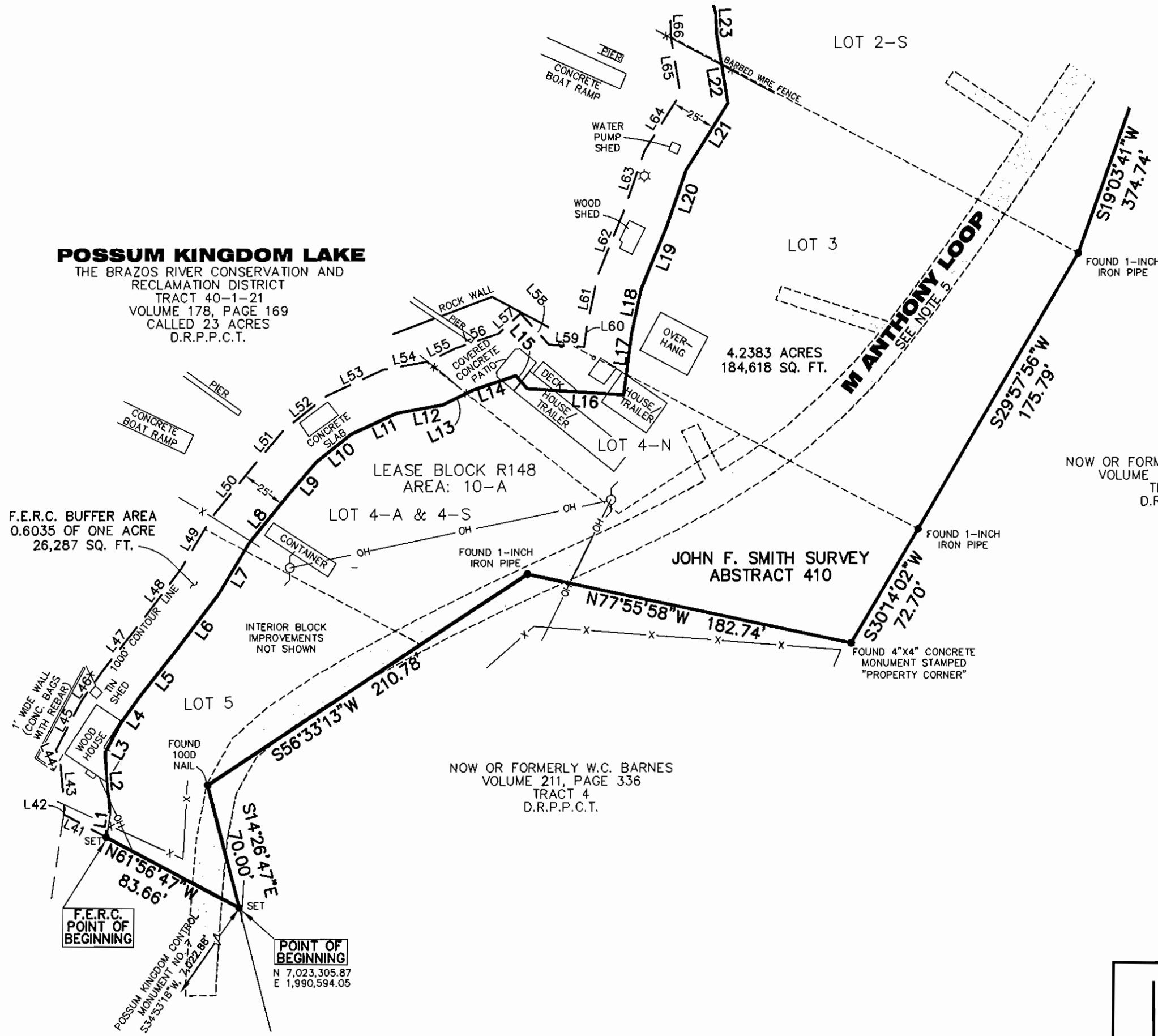
AECOM

AECOM USA GROUP, INC.
1200 SUMMIT AVENUE, SUITE 600
FORT WORTH, TEXAS 76102
WWW.AECOM.COM
817.698.6770

POSSUM KINGDOM LAKE

THE BRAZOS RIVER CONSERVATION AND RECLAMATION DISTRICT
TRACT 40-1-21
VOLUME 178, PAGE 169
CALLED 23 ACRES
D.R.P.P.C.T.

F.E.R.C. BUFFER AREA
0.6035 OF ONE ACRE
26,287 SQ. FT.



STANDARD LAND SURVEY
OF
4.8418 ACRES
SITUATED IN TRACT 40-1-21
AREA 10-A, LOTS 1-N, 1-S, 2-S, 2-N,
3, 4-N, 4-A, 4-S AND 5
POSSUM KINGDOM LAKE
JOHN F. SMITH SURVEY, ABSTRACT 410
PALO PINTO COUNTY, TEXAS

AECOM	AECOM USA GROUP, INC. 1200 SUMMIT AVENUE, SUITE 600 FORT WORTH, TEXAS 76102 WWW.AECOM.COM 817.698.6770	
	Date: 12/09/09	Project No. 60052528.103

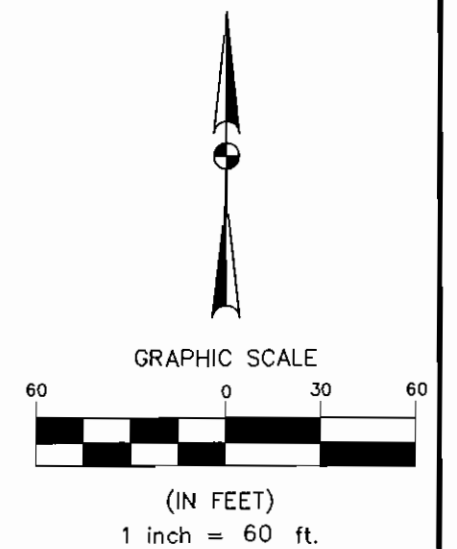
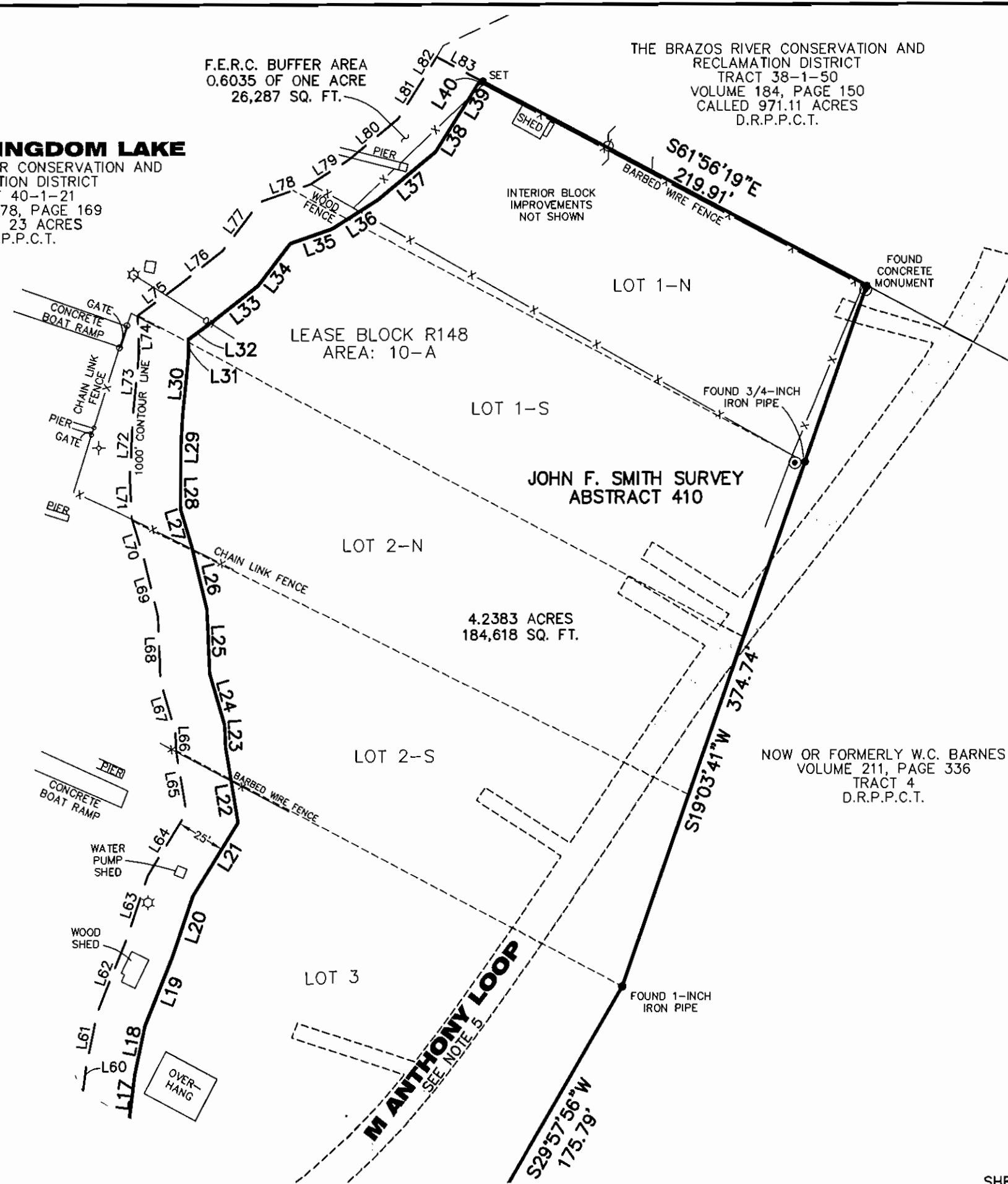
NO PART OR PARTS OF THIS DRAWING MAY BE REPRODUCED OR TRANSMITTED IN ANY WAY OR FORM (ELECTRONIC, MECHANICAL, PHOTOCOPYING, OR OTHERWISE) WITHOUT THE EXPRESS WRITTEN PERMISSION OF AECOM.

POSSUM KINGDOM LAKE

THE BRAZOS RIVER CONSERVATION AND RECLAMATION DISTRICT
TRACT 40-1-21
VOLUME 178, PAGE 169
CALLED 23 ACRES
D.R.P.P.C.T.

F.E.R.C. BUFFER AREA
0.6035 OF ONE ACRE
26,287 SQ. FT.

THE BRAZOS RIVER CONSERVATION AND RECLAMATION DISTRICT
TRACT 38-1-50
VOLUME 184, PAGE 150
CALLED 971.11 ACRES
D.R.P.P.C.T.



STANDARD LAND SURVEY OF
4.8418 ACRES
SITUATED IN TRACT 40-1-21
AREA 10-A, LOTS 1-N, 1-S, 2-S, 2-N,
3, 4-N, 4-A, 4-S AND 5
POSSUM KINGDOM LAKE
JOHN F. SMITH SURVEY, ABSTRACT 410
PALO PINTO COUNTY, TEXAS

AECOM	AECOM USA GROUP, INC. 1200 SUMMIT AVENUE, SUITE 600 FORT WORTH, TEXAS 76102 WWW.AECOM.COM 817.698.6770
	60052528 R148By.dwg

NO PART OR PARTS OF THIS DRAWING MAY BE REPRODUCED OR TRANSMITTED IN ANY WAY OR FORM (ELECTRONIC, MECHANICAL, PHOTOCOPYING, OR OTHERWISE) WITHOUT THE EXPRESS WRITTEN PERMISSION OF AECOM.

J:\60052528 Possum Kingdom Lake\102.01 Assimilation of Data\Group 2\R148\60052528 R148By.dwg 12/9/2009 7:54:01 PM CST