

SHEET 5

REYNOLD CLARK SURVEY
ABSTRACT 135

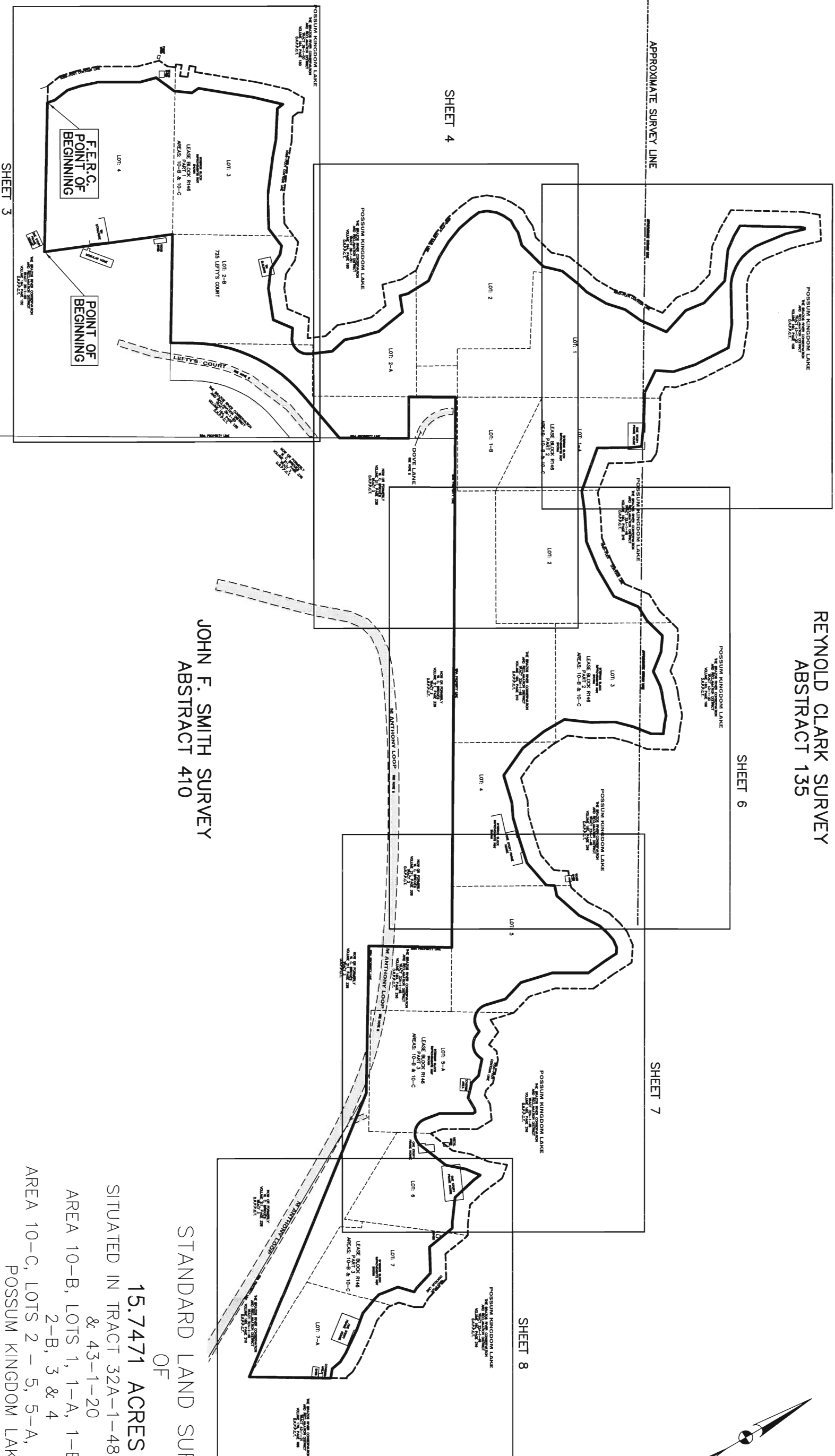
SHEET 6

APPROXIMATE SURVEY LINE

SHEET 7

SHEET 8

SHEET 4



JOHN F. SMITH SURVEY
ABSTRACT 410

STANDARD LAND SURVEY
OF

15.7471 ACRES

SITUATED IN TRACT 32A-1-48, 38-1-50
& 43-1-20

AREA 10-B, LOTS 1, 1-A, 1-B, 2, 2-A,
2-B, 3 & 4

AREA 10-C, LOTS 2-5, 5-A, 6, 7, & 7-A
POSSUM KINGDOM LAKE

JOHN F. SMITH SURVEY, ABSTRACT 410 &
REYNOLD CLARK SURVEY, ABSTRACT 135
PALO PINTO COUNTY, TEXAS

AECOM

AECOM USA GROUP, INC.
1200 SUMMIT AVENUE, SUITE 600
FORT WORTH, TEXAS 76102
WWW.AECOM.COM
817.698.6770

REVISED: 05/21/10
SHEET 2 OF 8

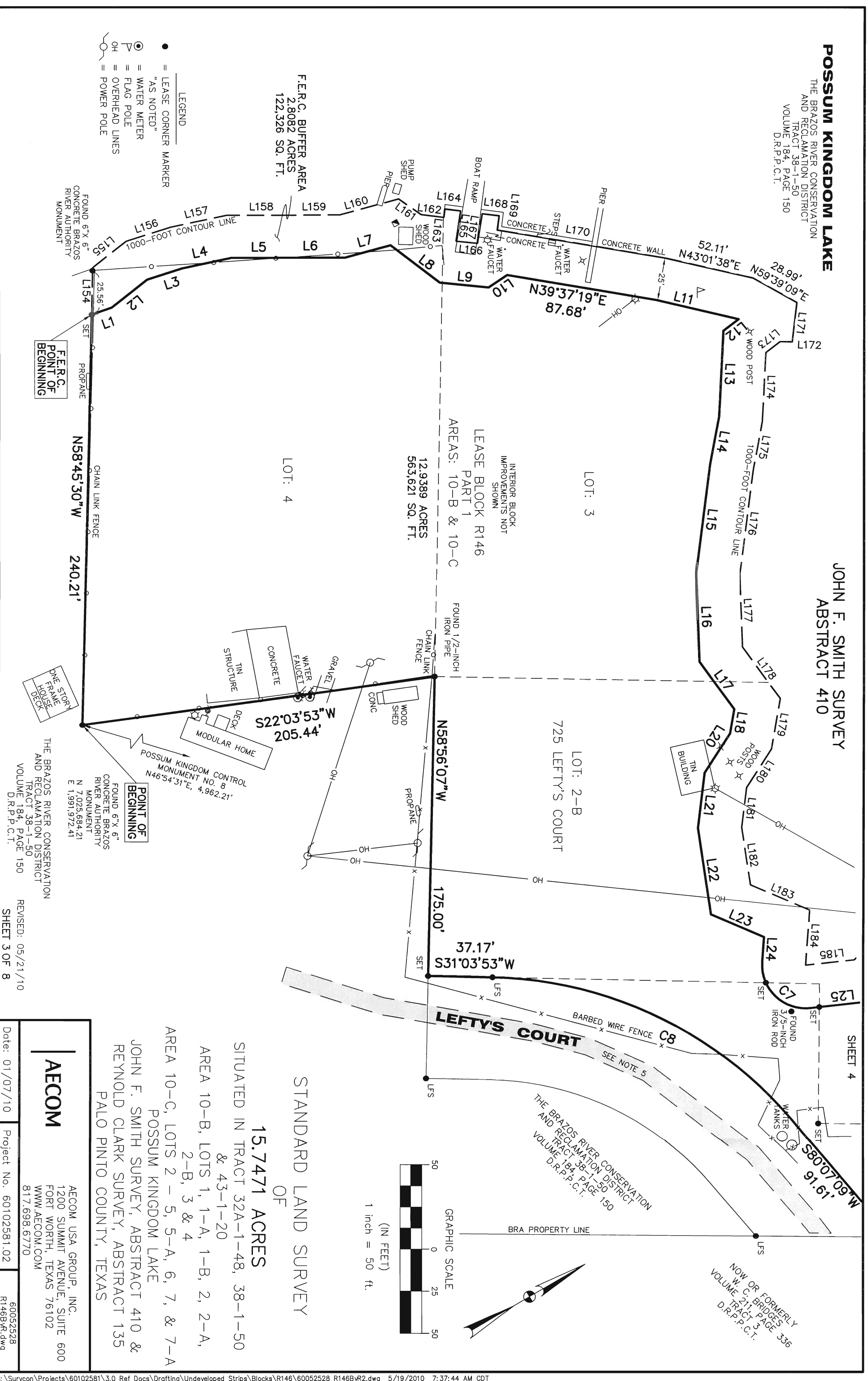
Date: 01/07/10 Project No. 60102581.02 60052528
R146BYR.dwg

POSSUM KINGDOM LAKE

THE BRAZOS RIVER CONSERVATION
AND RECLAMATION DISTRICT
TRACT 38-1-50
VOLUME 184, PAGE 150
D.R.P.P.C.T.

**JOHN F. SMITH SURVEY
ABSTRACT 410**

- LEGEND**
- = LEASE CORNER MARKER
 - "AS NOTED"
 - ⊙ = WATER METER
 - ⊕ = FLAG POLE
 - = OVERHEAD LINES
 - = POWER POLE



F.E.R.C. BUFFER AREA
2,8082 ACRES
122,326 SQ. FT.

LEASE BLOCK R146
PART 1
AREAS: 10-B & 10-C
12.9389 ACRES
563,621 SQ. FT.

LEFTY'S COURT
BARBED WIRE FENCE C8
SEE NOTE 5
THE BRAZOS RIVER CONSERVATION
AND RECLAMATION DISTRICT
TRACT 38-1-50
VOLUME 184, PAGE 150
D.R.P.P.C.T.



STANDARD LAND SURVEY
OF
15.7471 ACRES
SITUATED IN TRACT 32A-1-48, 38-1-50
& 43-1-20
AREA 10-B, LOTS 1, 1-A, 1-B, 2, 2-A,
2-B, 3 & 4
AREA 10-C, LOTS 2 - 5, 5-A, 6, 7, & 7-A
POSSUM KINGDOM LAKE
JOHN F. SMITH SURVEY, ABSTRACT 410 &
REYNOLD CLARK SURVEY, ABSTRACT 135
PALO PINTO COUNTY, TEXAS

AECOM	
AECOM USA GROUP, INC. 1200 SUMMIT AVENUE, SUITE 600 FORT WORTH, TEXAS 76102 WWW.AECOM.COM 817.698.6770	
Date: 01/07/10	Project No. 60102581.02
REVISED: 05/21/10 SHEET 3 OF 8	60052528 R146BYR.dwg

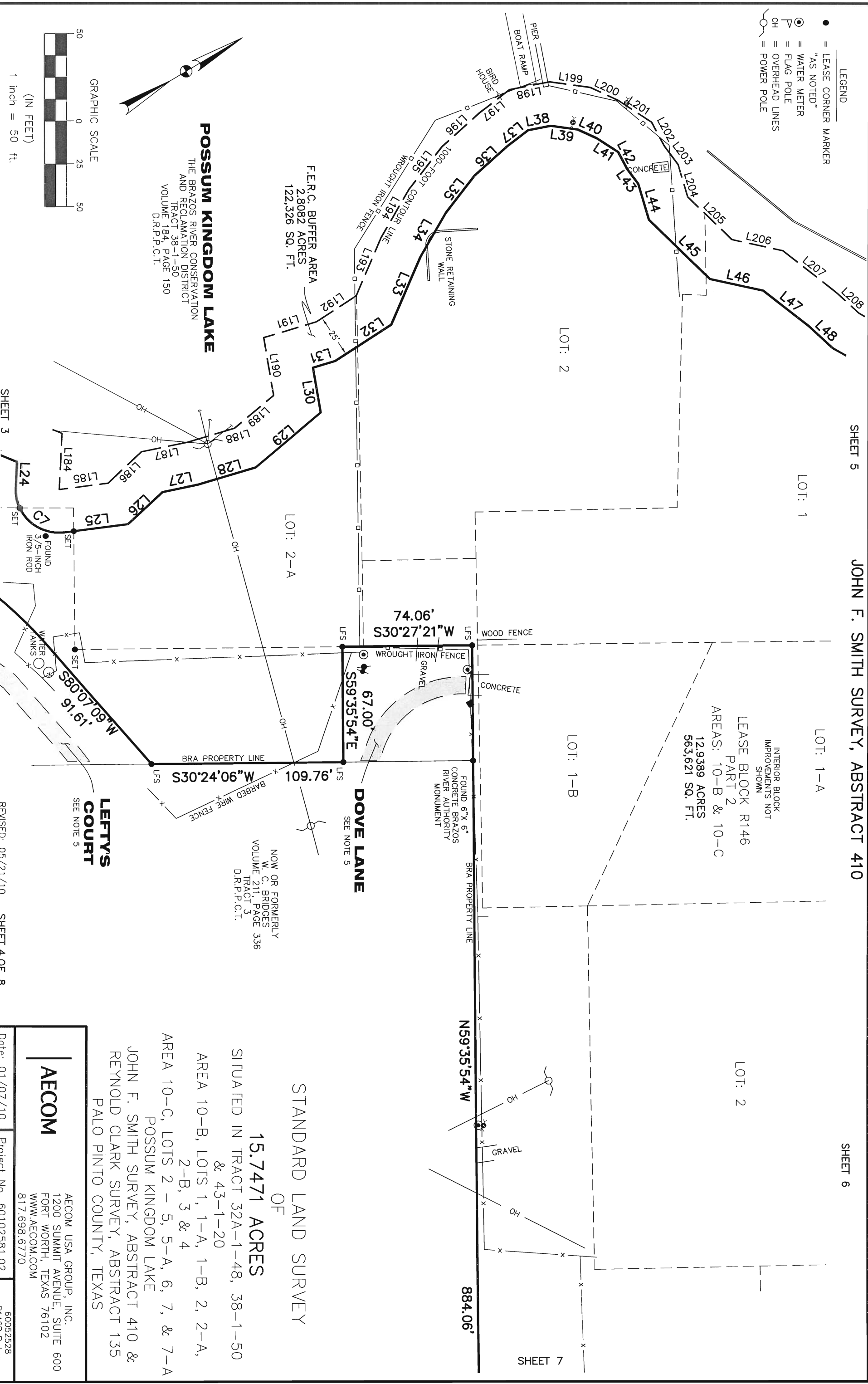
NO PART OR PARTS OF THIS DRAWING MAY BE REPRODUCED OR TRANSMITTED IN ANY WAY OR FORM (ELECTRONIC, MECHANICAL, PHOTOCOPIING, OR OTHERWISE) WITHOUT THE EXPRESS WRITTEN PERMISSION OF AECOM.

- LEGEND**
- = LEASE CORNER MARKER "AS NOTED"
 - = WATER METER
 - △ = FLAG POLE
 - OH = OVERHEAD LINES
 - = POWER POLE

SHEET 5

JOHN F. SMITH SURVEY, ABSTRACT 410

SHEET 6



POSSUM KINGDOM LAKE

THE BRAZOS RIVER CONSERVATION
AND RECLAMATION DISTRICT
TRACT 38-1-50
VOLUME 184, PAGE 150
D.R.P.P.C.T.

F.E.R.C. BUFFER AREA
2,8082 ACRES
122,326 SQ. FT.

LEASE BLOCK R146
PART 2
AREAS: 10-B & 10-C
12,9389 ACRES
563,621 SQ. FT.

NOW OR FORMERLY
W. C. BRIDGES
TRACT 3
VOLUME 211, PAGE 356
D.R.P.P.C.T.

LEFTY'S COURT
SEE NOTE 5

DOVE LANE
SEE NOTE 5

STANDARD LAND SURVEY
OF

15.7471 ACRES

SITUATED IN TRACT 32A-1-48, 38-1-50
& 43-1-20

AREA 10-B, LOTS 1, 1-A, 1-B, 2, 2-A,
2-B, 3 & 4

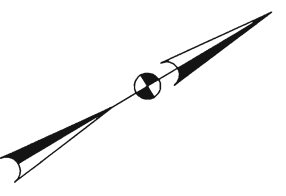
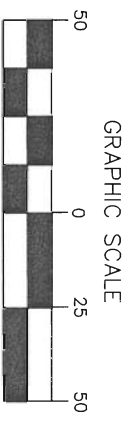
AREA 10-C, LOTS 2-5, 5-A, 6, 7, & 7-A
POSSUM KINGDOM LAKE

JOHN F. SMITH SURVEY, ABSTRACT 410 &
REYNOLD CLARK SURVEY, ABSTRACT 135
PALO PINTO COUNTY, TEXAS

AECOM

AECOM USA GROUP, INC.
1200 SUMMIT AVENUE, SUITE 600
FORT WORTH, TEXAS 76102
WWW.AECOM.COM
817.698.6770

Date: 01/07/10 Project No. 60102581.02 60052528 R146BYR.dwg



NO PART OF THIS DRAWING MAY BE REPRODUCED OR TRANSMITTED IN ANY WAY OR FORM (ELECTRONIC, MECHANICAL, PHOTOCOPIING, OR OTHERWISE) WITHOUT THE EXPRESS WRITTEN PERMISSION OF AECOM.

SHEET 3

REVISED: 05/21/10

SHEET 4 OF 8

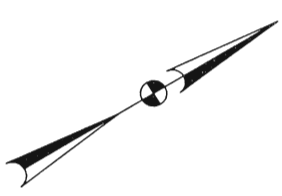
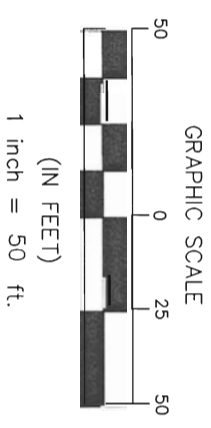
SHEET 7

REYNOLD CLARK SURVEY, ABSTRACT 135

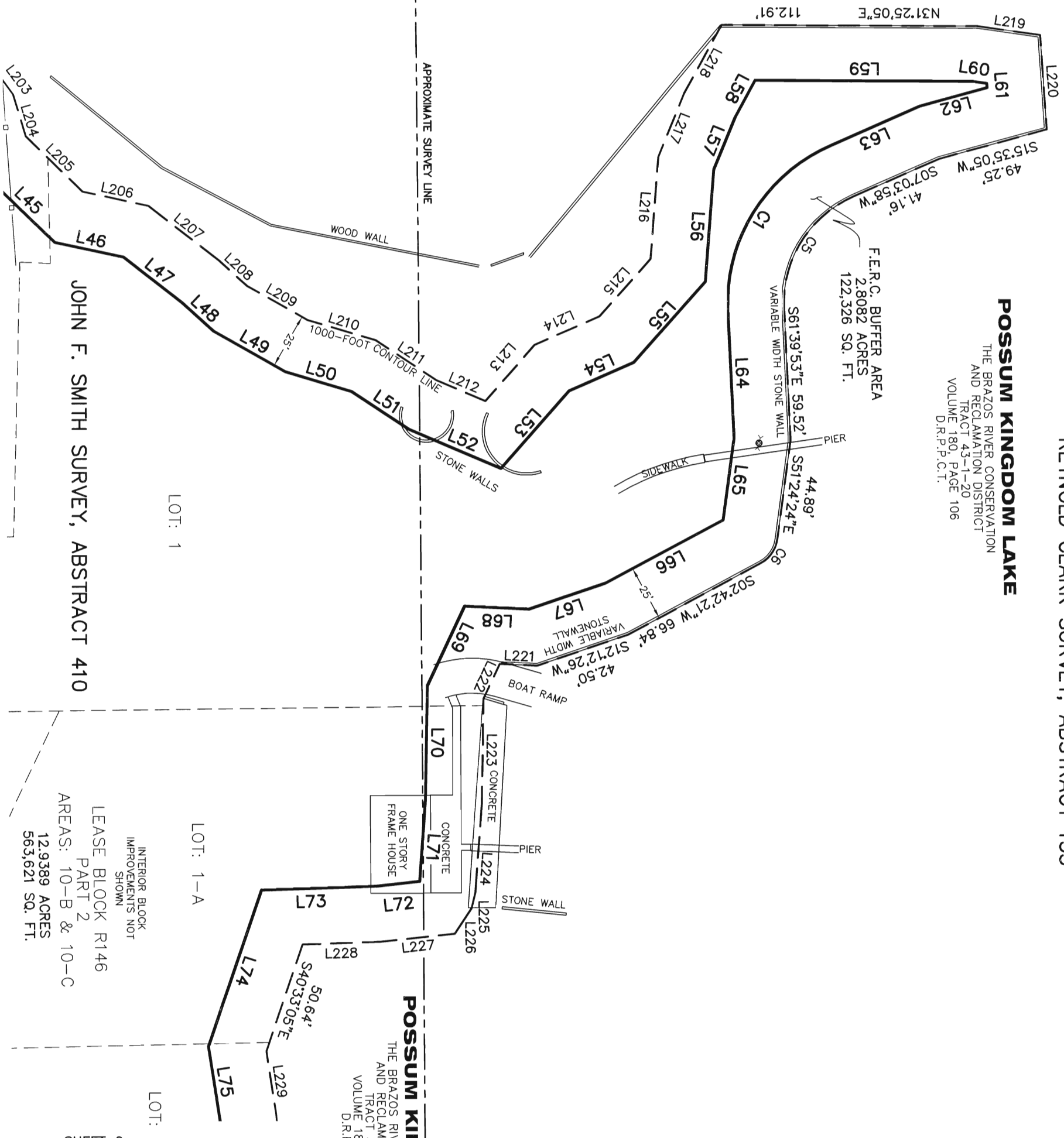
POSSUM KINGDOM LAKE

THE BRAZOS RIVER CONSERVATION
AND RECLAMATION DISTRICT
TRACT 43-1-20
VOLUME 180, PAGE 106
D.R.P.P.C.T.

F.E.R.C. BUFFER AREA
2,8082 ACRES
122,326 SQ. FT.



- LEGEND
- = LEASE CORNER MARKER
 - "AS NOTED"
 - ⊙ = WATER METER
 - ⊙ = FLAG POLE
 - OH = OVERHEAD LINES
 - = POWER POLE



POSSUM KINGDOM LAKE
THE BRAZOS RIVER CONSERVATION
AND RECLAMATION DISTRICT
TRACT 32A-1-48
VOLUME 180, PAGE 210
D.R.P.P.C.T.

STANDARD LAND SURVEY
OF

15.7471 ACRES

SITUATED IN TRACT 32A-1-48, 38-1-50
& 43-1-20
AREA 10-B, LOTS 1, 1-A, 1-B, 2, 2-A,
2-B, 3 & 4
AREA 10-C, LOTS 2 - 5, 5-A, 6, 7, & 7-A
POSSUM KINGDOM LAKE

JOHN F. SMITH SURVEY, ABSTRACT 410 &
REYNOLD CLARK SURVEY, ABSTRACT 135
PALO PINTO COUNTY, TEXAS

AECOM
AECOM USA GROUP, INC.
1200 SUMMIT AVENUE, SUITE 600
FORT WORTH, TEXAS 76102
WWW.AECOM.COM
817.698.6770

Date: 01/07/10 Project No. 60102581.02 60052528 R146BR.dwg

JOHN F. SMITH SURVEY, ABSTRACT 410

LEASE BLOCK R146
PART 2
AREAS: 10-B & 10-C
12.9389 ACRES
563,621 SQ. FT.

SHEET 4

REVISED: 05/21/10 SHEET 5 OF 8

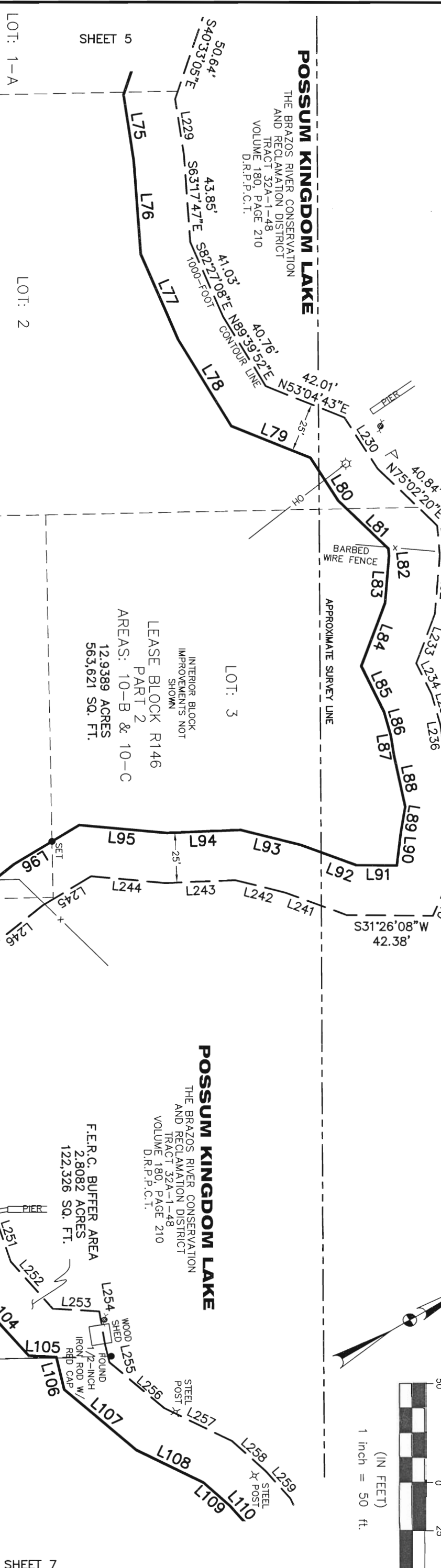
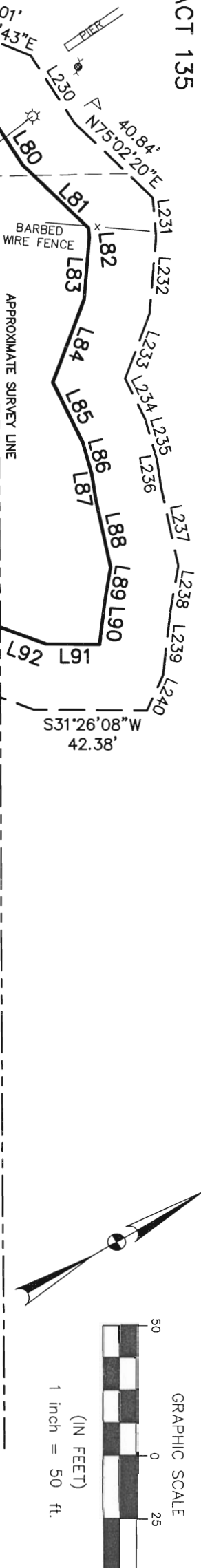
SHEET 6

NO PART OF THIS DRAWING MAY BE REPRODUCED OR TRANSMITTED IN ANY WAY OR FORM (ELECTRONIC, MECHANICAL, PHOTOCOPYING, OR OTHERWISE) WITHOUT THE EXPRESS WRITTEN PERMISSION OF AECOM.

REYNOLD CLARK SURVEY, ABSTRACT 135

POSSUM KINGDOM LAKE

THE BRAZOS RIVER CONSERVATION
AND RECLAMATION DISTRICT
TRACT 32A-1-48
VOLUME 180, PAGE 210
D.R.P.P.C.T.



- LEGEND**
- = LEASE CORNER MARKER "AS NOTED"
 - = WATER METER
 - ⊙ = FLAG POLE
 - OH = OVERHEAD LINES
 - = POWER POLE

JOHN F. SMITH SURVEY, ABSTRACT 410

NOW OR FORMERLY
W. C. BRIDGES
TRACT 3
VOLUME 211, PAGE 336
D.R.P.P.C.T.

THE BRAZOS RIVER CONSERVATION
AND RECLAMATION DISTRICT
TRACT 32A-1-48
VOLUME 180, PAGE 210
D.R.P.P.C.T.

POSSUM KINGDOM LAKE

THE BRAZOS RIVER CONSERVATION
AND RECLAMATION DISTRICT
TRACT 32A-1-48
VOLUME 180, PAGE 210
D.R.P.P.C.T.

F.E.R.C. BUFFER AREA
2,8082 ACRES
122,326 SQ. FT.

STANDARD LAND SURVEY

15.7471 ACRES
SITUATED IN TRACT 32A-1-48, 38-1-50
& 43-1-20

AREA 10-B, LOTS 1, 1-A, 1-B, 2, 2-A,
2-B, 3 & 4

AREA 10-C, LOTS 2-5, 5-A, 6, 7, & 7-A
POSSUM KINGDOM LAKE
JOHN F. SMITH SURVEY, ABSTRACT 410 &
REYNOLD CLARK SURVEY, ABSTRACT 135
PALO PINTO COUNTY, TEXAS

M ANTHONY LOOP

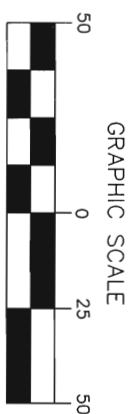
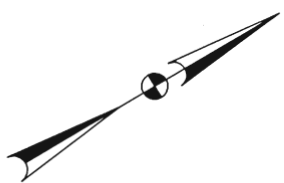
SEE NOTE 5

AECOM

AECOM USA GROUP, INC.
1200 SUMMIT AVENUE, SUITE 600
FORT WORTH, TEXAS 76102
WWW.AECOM.COM
817.698.6770

NO PART OF THIS DRAWING MAY BE REPRODUCED OR TRANSMITTED IN ANY MANNER WITHOUT THE EXPRESS WRITTEN PERMISSION OF AECOM.

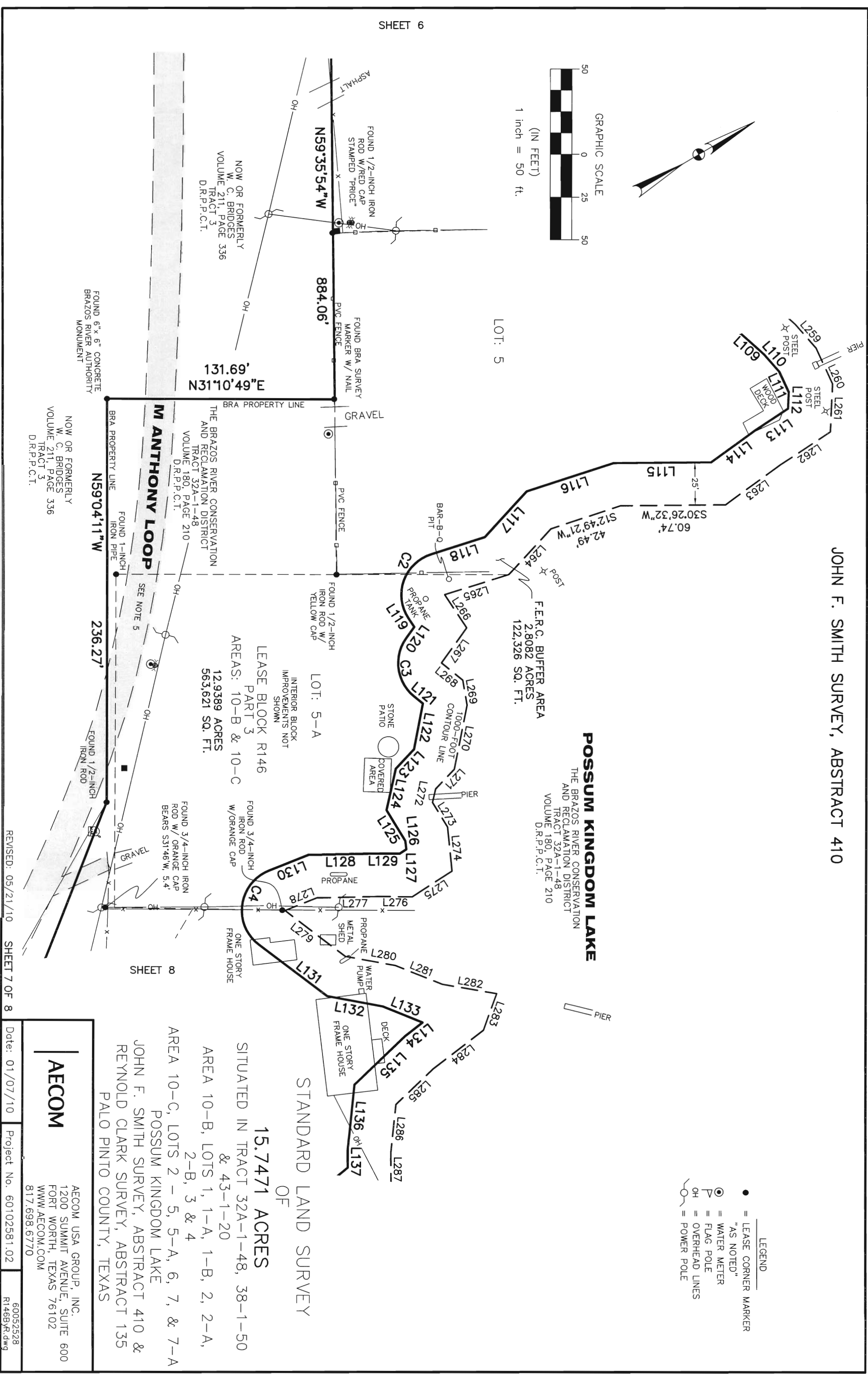
JOHN F. SMITH SURVEY, ABSTRACT 410



(IN FEET)
1 inch = 50 ft.

POSSUM KINGDOM LAKE
THE BRAZOS RIVER CONSERVATION
AND RECLAMATION DISTRICT
TRACT 32A-1-48
VOLUME 180, PAGE 210
D.R.P.C.T.

- LEGEND**
- = LEASE CORNER MARKER "AS NOTED"
 - ⊙ = WATER METER
 - ⊕ = FLAG POLE
 - OH = OVERHEAD LINES
 - = POWER POLE



SHEET 8

NO PART OR PARTS OF THIS DRAWING MAY BE REPRODUCED OR TRANSMITTED IN ANY WAY OR FORM (ELECTRONIC, MECHANICAL, PHOTOCOPIING, OR OTHERWISE) WITHOUT THE EXPRESS WRITTEN PERMISSION OF AECOM.

REVISED: 05/21/10 SHEET 7 OF 8

15.7471 ACRES
STANDARD LAND SURVEY
OF
SITUATED IN TRACT 32A-1-48, 38-1-50
& 43-1-20
AREA 10-B, LOTS 1, 1-A, 1-B, 2, 2-A,
2-B, 3 & 4
AREA 10-C, LOTS 2-5, 5-A, 6, 7, & 7-A
POSSUM KINGDOM LAKE
JOHN F. SMITH SURVEY, ABSTRACT 410 &
REYNOLD CLARK SURVEY, ABSTRACT 135
PALO PINTO COUNTY, TEXAS

AECOM

AECOM USA GROUP, INC.
1200 SUMMIT AVENUE, SUITE 600
FORT WORTH, TEXAS 76102
WWW.AECOM.COM
817.698.6770

Date: 01/07/10 Project No. 60102581.02 60052528 R146BR.dwg

JOHN F. SMITH SURVEY, ABSTRACT 410

POSSUM KINGDOM LAKE

THE BRAZOS RIVER CONSERVATION AND RECLAMATION DISTRICT TRACT 32A-1-48 VOLUME 180, PAGE 210 D.R.P.P.C.T.

SURVEYORS CERTIFICATE
TO: BRAZOS RIVER AUTHORITY, PATTERSON PK LAND PARTNERSHIP, LTD., AND HERITAGE TITLE COMPANY OF AUSTIN, INC.

I, JAMES T. MULLER, A REGISTERED PROFESSIONAL LAND SURVEYOR IN THE STATE OF TEXAS, REGISTRATION NUMBER 4522, HEREBY STATE THAT A SURVEY OF THE REAL PROPERTY DESCRIBED IN SEPARATE LEGAL DESCRIPTION AS NOTED HEREON, WAS ACTUALLY MADE UPON THE GROUND UNDER MY DIRECTION AND SUPERVISION, AND THAT TO THE BEST OF MY PROFESSIONAL KNOWLEDGE AND BELIEF, THE INFORMATION SHOWN HEREON IS CORRECT AS DETERMINED BY SAID SURVEY.

THIS SURVEY SUBSTANTIALLY COMPLIES WITH THE CURRENT TEXAS SOCIETY OF PROFESSIONAL SURVEYORS STANDARDS AND SPECIFICATIONS FOR A CATEGORY 1B, CONDITION II SURVEY.

JAMES T. MULLER
REGISTERED PROFESSIONAL LAND SURVEYOR
TEXAS REGISTRATION NO. 4522
DATE: MAY 21, 2010



- LEGEND
- = LEASE CORNER MARKER "AS NOTED"
 - ⊙ = WATER METER
 - P = FLAG POLE
 - OH = OVERHEAD LINES
 - = POWER POLE

STANDARD LAND SURVEY OF

15.7471 ACRES

SITUATED IN TRACT 32A-1-48, 38-1-50 & 43-1-20

AREA 10-B, LOTS 1, 1-A, 1-B, 2, 2-A, 2-B, 3 & 4

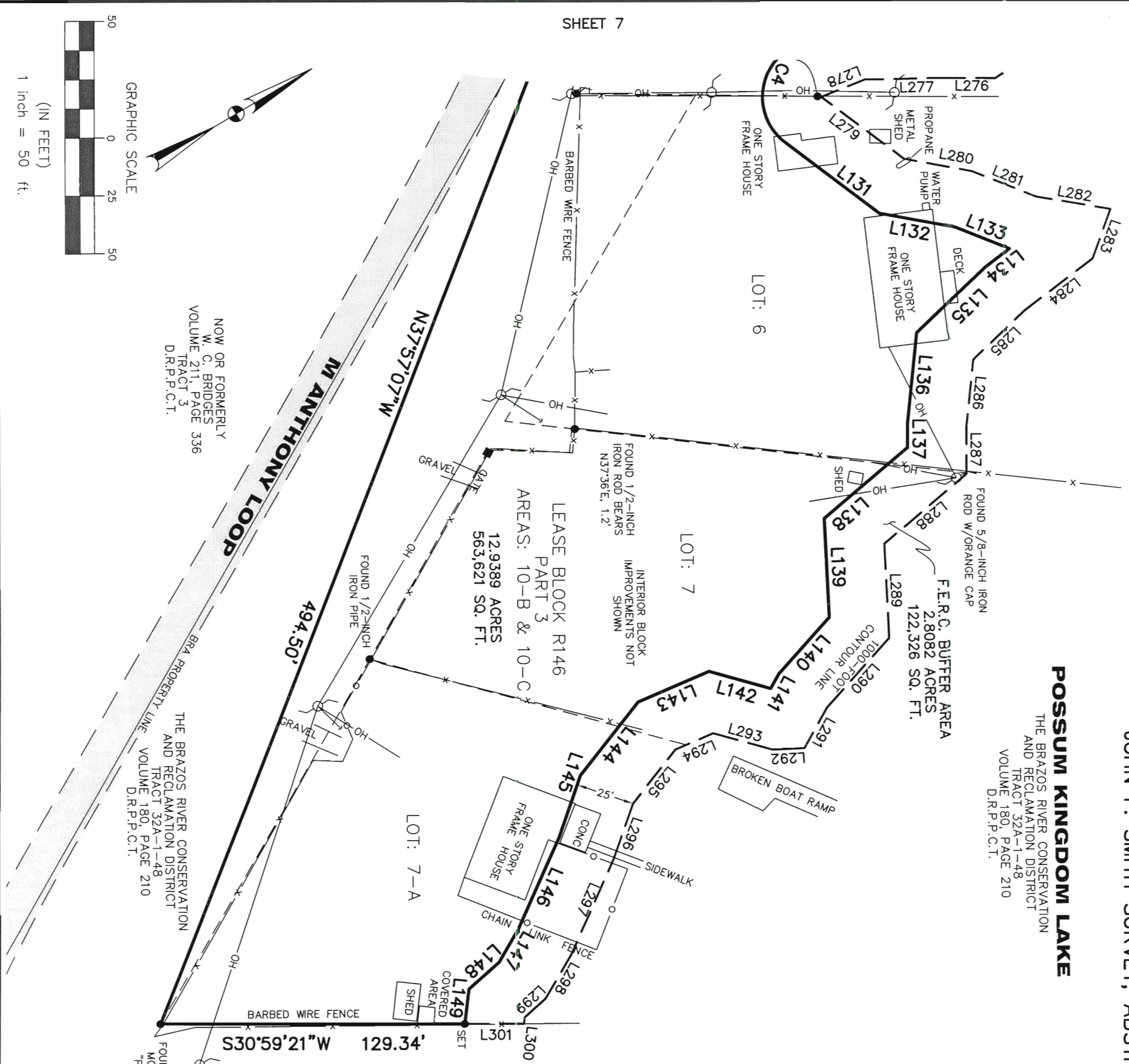
AREA 10-C, LOTS 2 - 5, 5-A, 6, 7, & 7-A

POSSUM KINGDOM LAKE
JOHN F. SMITH SURVEY, ABSTRACT 410 &
REYNOLD CLARK SURVEY, ABSTRACT 135
PALO PINTO COUNTY, TEXAS

AECOM

AECOM USA GROUP, INC.
1200 SUMMIT AVENUE, SUITE 600
FORT WORTH, TEXAS 76102
WWW.AECOM.COM
817.698.6770

Date: 01/07/10 Project No. 60102581.02 60052528 R146BYR.dwg

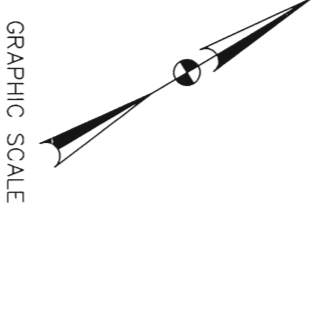


NOW OR FORMERLY
W. C. BRIDGES
VOLUME 211, PAGE 336
TRACT 3
D.R.P.P.C.T.

THE BRAZOS RIVER CONSERVATION AND RECLAMATION DISTRICT TRACT 32A-1-48 VOLUME 180, PAGE 210 D.R.P.P.C.T.

THE BRAZOS RIVER CONSERVATION AND RECLAMATION DISTRICT TRACT 42-1-21 VOLUME 178, PAGE 168 D.R.P.P.C.T.

FOUND 4"x4" CONCRETE MONUMENT STAMPED PROPERTY CORNER 32-42"



(IN FEET)
1 inch = 50 ft.