

VICINITY MAP
NOT TO SCALE

LINE	BEARING	DISTANCE
L1	S51°50'32"W	14.82'
L2	S151°7'06"W	12.82'
L3	N59°46'04"W	25.40'
L4	S23°04'51"W	151.73'
L5	N24°41'39"E	43.21'
L6	N07°01'37"E	37.32'
L7	N16°44'50"E	53.51'
L8	N28°01'21"W	43.90'
L9	N22°20'09"W	41.13'
L10	N64°07'24"W	27.20'
L11	N25°40'13"W	12.72'
L12	N07°43'08"W	18.75'
L13	N23°19'03"W	17.19'
L14	N48°53'56"W	41.05'
L15	N31°59'20"E	34.18'
L16	N22°35'33"E	22.94'
L17	N15°48'53"E	20.09'
L18	N03°49'59"E	53.19'
L19	N34°33'23"W	19.42'
L20	N44°18'16"E	26.76'
L21	N24°12'35"W	37.88'
L22	N05°29'22"W	30.11'
L23	N31°27'17"W	47.13'
L24	N44°35'38"W	25.08'
L25	N15°53'25"W	8.37'
L26	N59°59'50"E	24.98'

LINE	BEARING	DISTANCE
L27	N23°56'57"E	45.46'
L28	N20°36'48"E	26.06'
L29	S55°17'48"E	14.73'
L30	S65°36'30"E	44.73'
L31	N38°26'18"E	29.80'
L32	N28°08'32"E	21.60'
L33	N45°42'35"E	36.10'
L34	N34°32'03"E	40.25'
L35	N36°01'37"E	70.65'
L36	N03°50'11"E	35.26'
L37	N38°19'12"E	16.66'
L38	N55°02'52"E	22.44'
L39	N27°10'28"E	33.91'
L40	N15°55'32"E	43.89'
L41	N17°01'52"E	41.30'
L42	N08°40'48"E	34.93'
L43	N15°10'15"E	26.04'
L44	N02°28'28"E	39.97'
L45	N01°20'42"E	42.53'
L46	N26°33'20"W	43.03'
L47	N04°12'34"E	32.54'
L48	N17°20'08"W	35.61'
L49	N22°54'13"W	53.96'
L50	N07°56'01"E	36.65'
L51	N04°26'29"W	61.95'
L52	N66°54'58"W	41.39'
L53	N16°55'41"E	12.14'
L54	N18°56'46"E	17.69'
L55	N22°17'10"E	32.07'
L56	S72°55'42"E	37.57'
L57	N29°11'45"E	20.96'
L58	N37°09'44"E	39.26'
L59	N28°25'31"E	36.75'
L60	N37°28'27"E	20.89'
L61	N29°46'44"E	32.60'
L62	N06°09'17"E	40.30'
L63	N58°45'09"W	26.95'
L64	N40°53'14"E	36.36'
L65	N27°31'14"E	31.02'
L66	N19°18'05"E	11.98'
L67	N73°38'50"E	24.09'

LINE	BEARING	DISTANCE
L68	S88°42'26"E	5.75'
L69	S73°34'16"E	12.62'
L70	S43°27'24"E	7.56'
L71	S11°25'30"E	45.56'
L72	S19°55'42"E	112.63'
L73	S43°08'13"W	39.23'
L74	S05°45'52"E	25.73'
L75	S01°43'22"W	20.19'
L76	S17°37'28"E	44.15'
L77	S71°35'56"E	77.43'
L78	S03°32'21"E	43.54'
L79	S80°23'39"W	26.29'
L80	S27°31'27"W	62.40'
L81	S02°13'41"E	9.89'
L82	S18°01'17"W	53.47'
L83	S08°01'20"E	90.05'
L84	S19°25'28"E	60.06'
L85	S81°29'08"E	41.34'
L86	S37°37'08"W	12.25'
L87	S28°41'02"W	18.02'
L88	S16°52'06"W	6.27'
L89	S74°16'41"W	8.40'
L90	S37°01'59"W	29.46'
L91	S15°17'01"W	34.28'
L92	S43°44'12"E	74.01'
L93	S65°17'56"E	30.13'
L94	S36°46'54"E	61.08'
L95	N86°59'36"E	41.13'
L96	N60°43'10"E	31.23'
L97	N26°43'31"E	25.54'
L98	N38°01'44"E	38.07'
L99	N32°15'03"W	31.79'
L100	N50°01'53"E	39.63'
L101	N37°28'27"E	32.84'
L102	S63°30'08"E	52.91'
L103	N73°40'15"E	35.91'
L104	N49°08'33"E	43.74'
L105	N45°29'20"E	38.31'
L106	N61°44'24"E	27.82'
L107	N58°21'57"E	16.29'
L108	S71°43'39"E	23.20'

LINE	BEARING	DISTANCE
L109	N20°17'08"E	41.65'
L110	N42°31'30"E	23.26'
L111	N28°23'29"E	38.83'
L112	N04°46'00"W	54.58'
L113	N61°40'45"W	27.01'
L114	N42°55'54"E	34.93'
L115	N36°57'09"E	9.54'
L116	N60°38'33"E	146.10'
L117	N53°37'23"E	18.26'
L118	S23°04'51"W	16.24'
L119	N82°55'09"W	22.19'
L120	N12°21'34"E	17.22'
L121	N04°41'39"E	41.14'
L122	N07°01'37"E	39.96'
L123	N16°44'50"E	45.34'
L124	N28°01'21"W	34.85'
L125	N22°20'09"W	32.83'
L126	N62°33'10"W	25.95'
L127	N24°37'10"W	32.54'
L128	N31°07'09"E	24.85'
L129	N07°43'08"W	15.32'
L130	N23°19'03"W	8.09'
L131	S58°02'30"W	32.08'
L132	N04°25'05"W	43.80'
L133	N32°56'03"W	17.53'
L134	N31°59'20"E	48.56'
L135	N22°35'33"E	19.40'
L136	N15°48'53"E	15.98'
L137	N03°49'59"E	41.87'
L138	N34°33'23"W	31.27'
L139	N44°18'16"E	30.29'
L140	N24°12'35"W	24.97'
L141	N05°29'22"W	28.47'
L142	N31°27'17"W	38.49'
L143	N44°35'38"W	28.60'
L144	N15°53'25"W	34.26'
L145	N59°59'50"E	36.34'
L146	N23°56'57"E	36.60'
L147	N20°36'48"E	36.22'
L148	N65°21'53"E	23.86'
L149	S55°17'48"E	27.21'

LINE	BEARING	DISTANCE
L150	S65°36'30"E	42.48'
L151	N38°26'18"E	27.55'
L152	N28°08'32"E	23.21'
L153	N45°42'35"E	37.52'
L154	N34°32'03"E	38.13'
L155	N36°01'37"E	63.76'
L156	N03°50'11"E	35.81'
L157	N38°19'12"E	28.10'
L158	N55°02'52"E	19.91'
L159	N27°10'28"E	25.24'
L160	N15°55'32"E	41.67'
L161	N17°01'52"E	39.71'
L162	N08°40'48"E	34.52'
L163	N15°10'15"E	24.68'
L164	N02°28'28"E	36.95'
L165	N01°20'42"E	36.07'
L166	N26°33'20"W	43.70'
L167	N04°12'34"E	34.66'
L168	N17°20'08"W	29.64'
L169	N22°54'13"W	59.64'
L170	N07°56'01"E	40.83'
L171	N04°26'29"W	44.07'
L172	N66°54'58"W	20.62'
L173	N70°55'14"W	27.91'
L174	N16°55'41"E	47.88'
L175	N75°27'37"E	4.96'
L176	N18°56'46"E	17.69'
L177	N47°08'37"W	4.75'
L178	N22°17'10"E	69.85'
L179	S68°08'55"E	22.55'
L180	S72°55'46"E	37.25'
L181	N29°11'45"E	22.70'
L182	N37°09'44"E	39.09'
L183	N28°25'31"E	36.82'
L184	N37°28'27"E	21.19'
L185	N29°46'44"E	25.69'
L186	N06°09'17"E	19.17'
L187	N58°45'09"W	37.19'
L188	N33°32'57"E	26.76'
L189	N40°53'14"E	35.91'
L190	N27°31'14"E	26.29'

LINE	BEARING	DISTANCE
L191	N19°18'05"E	23.02'
L192	N73°38'50"E	40.80'
L193	S88°42'26"E	12.95'
L194	S73°34'16"E	22.67'
L195	S43°27'24"E	21.46'
L196	S11°25'30"E	50.87'
L197	S19°55'42"E	126.11'
L198	S43°08'13"W	43.21'
L199	S05°45'52"E	16.00'
L200	S01°43'22"W	17.56'
L201	S17°37'28"E	27.16'
L202	S71°35'56"E	70.88'
L203	N87°05'51"E	9.93'
L204	S03°32'21"E	83.55'
L205	S87°42'41"W	8.70'
L206	S50°23'39"W	23.20'
L207	S27°31'27"W	50.70'
L208	S02°13'41"E	7.71'
L209	S18°01'17"W	52.15'
L210	S08°01'20"E	81.77'
L211	S19°25'28"E	42.53'
L212	S81°29'08"E	36.03'
L213	N72°56'19"E	11.23'
L214	S28°07'19"E	18.44'
L215	S06°46'56"W	10.44'
L216	S37°37'08"W	29.49'
L217	S28°41'02"W	16.07'
L218	S41°21'21"E	15.14'
L219	S29°41'28"W	14.11'
L220	S16°52'06"W	18.02'
L221	S74°16'41"W	13.66'
L222	S37°01'59"W	16.23'
L223	S15°17'01"W	15.33'
L224	S43°44'12"E	55.10'
L225	S65°17'56"E	31.72'

LINE	BEARING	DISTANCE
L226	S36°46'54"E	54.08'
L227	N86°59'36"E	17.96'
L228	N60°43'10"E	21.76'
L229	N26°43'31"E	20.38'
L230	N38°01'44"E	22.95'
L231	N32°15'03"W	36.04'
L232	N50°01'53"E	51.39'
L233	N06°06'21"E	53.55'
L234	S63°03'08"E	60.40'
L235	N73°40'15"E	20.55'
L236	N49°08'33"E	37.51'
L237	N45°29'20"E	41.08'
L238	N61°44'24"E	30.65'
L239	N58°21'57"E	27.19'
L240	S71°43'39"E	34.84'
L241	N20°17'08"E	46.57'
L242	N42°31'30"E	25.07'
L243	N28°23'29"E	28.29'
L244	N04°46'00"W	33.59'
L245	N61°40'45"W	43.82'
L246	N33°22'22"E	11.66'
L247	N42°55'54"E	53.97'
L248	N36°57'09"E	13.47'
L249	N60°38'38"E	48.88'
L250	S71°28'37"E	30.70'

ACREAGE TABLE
LEASE BLOCK: 14.7466 ACRES
F.E.R.C. BUFFER AREA: 2.4031 ACRES
SURVEY BLOCK: 17.1497 ACRES TOTAL

STANDARD LAND SURVEY
OF
17.1497 ACRES
SITUATED IN TRACT 43-1-20

AREA 10-E, LOTS 1-A - 1-G, 2-A - 2-B,
2-11, 3-A, 5-A, 6-A, 11-A, & 11-C
REYNOLD CLARK SURVEY, ABSTRACT 135
POSSUM KINGDOM LAKE
PALO PINTO COUNTY, TEXAS

TO: BRAZOS RIVER AUTHORITY, PATTERSON PK LAND PARTNERSHIP, LTD., AND HERITAGE TITLE COMPANY OF AUSTIN, INC.

I, JAMES T. MULLER, A REGISTERED PROFESSIONAL LAND SURVEYOR IN THE STATE OF TEXAS, REGISTRATION NUMBER 4522, HEREBY STATE THAT A SURVEY OF THE REAL PROPERTY DESCRIBED IN SEPARATE LEGAL DESCRIPTION AS NOTED HEREON, WAS ACTUALLY MADE UPON THE GROUND UNDER MY DIRECTION AND SUPERVISION, AND THAT TO THE BEST OF MY PROFESSIONAL KNOWLEDGE AND BELIEF, THE INFORMATION SHOWN HEREON IS CORRECT AS DETERMINED BY SAID SURVEY.

THIS SURVEY SUBSTANTIALLY COMPLIES WITH THE CURRENT TEXAS SOCIETY OF PROFESSIONAL SURVEYORS STANDARDS AND SPECIFICATIONS FOR A CATEGORY 1B, CONDITION II SURVEY.

[Handwritten Signature]

JAMES T. MULLER
REGISTERED PROFESSIONAL LAND SURVEYOR
TEXAS REGISTRATION NO. 4522



DATE: MAY 21, 2010

- 1) BEARINGS AND COORDINATES SHOWN HEREON ARE BASED ON THE NORTH AMERICAN DATUM OF 1983, TEXAS COORDINATE SYSTEM, NORTH CENTRAL ZONE (4202).
- 2) 1,000-FOOT CONTOUR ELEVATION OF POSSUM KINGDOM LAKE IS DETERMINED BASED ON MEASUREMENTS FROM THE TOP OF THE EXISTING SPILLWAY GREST GATES AT THE MORRIS SHEPPARD DAM BEING AT ELEVATION 1,000- FEET ABOVE MEAN SEA LEVEL AS NOTED IN FEDERAL POWER COMMISSION REPORT PROJECT NO. 1490 - TEXAS ON JUNE 2, 1938.
- 3) SET = 5/8" IRON ROD W/CAP STAMPED "AECOM" SET; D.R.P.C.T. = DEED RECORDS, PALO PINTO COUNTY, TEXAS; P.R.P.C.T. = PLAT RECORDS, PALO PINTO COUNTY, TEXAS; F.E.R.C. = FEDERAL ENERGY REGULATORY COMMISSION; J.R.P.C.T. = JUDGEMENT RECORDS, PALO PINTO COUNTY, TEXAS; LRS = 5/8" IRON ROD W/CAP STAMPED "LINKFIELD RPLS 5087" FOUND.
- 4) METES AND BOUNDS DESCRIPTIONS TO ACCOMPANY THIS SURVEY.
- 5) LOCATION, POSITION AND GEOMETRY OF ROAD RIGHTS-OF-WAY SHOWN AND DESCRIBED HEREON BASED ON SURVEYS PROVIDED BY LINK FIELD SERVICES, NO DEED OF RECORD HAS BEEN RECORDED AT THIS TIME FOR SAME UNLESS NOTED OTHERWISE.
- 6) IMPROVEMENTS SHOWN HEREON TIED FEBRUARY 2010.

REVISED: 05/21/10 SHEET 1 OF 7

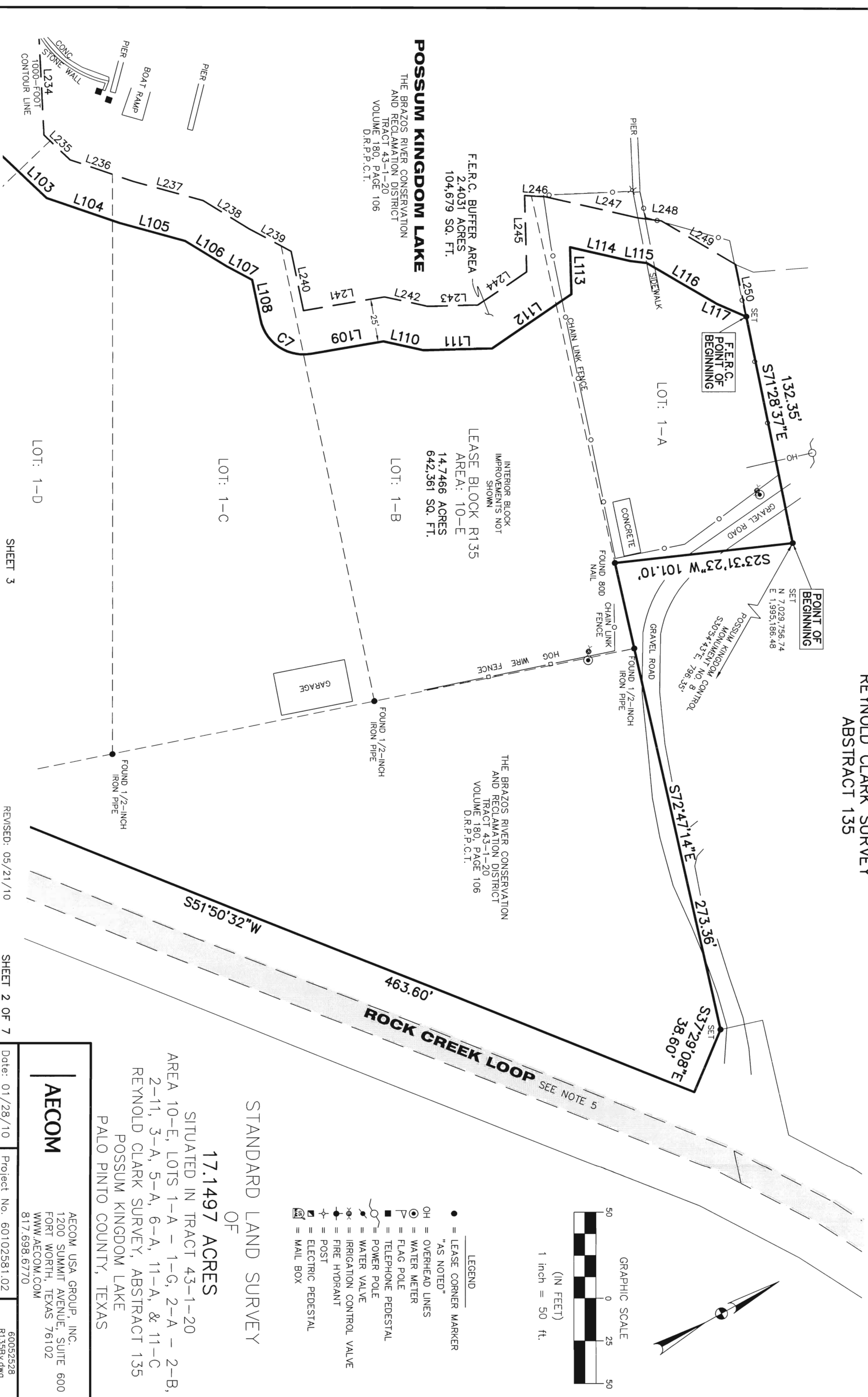
Date: 01/28/10 Project No. 60102581.02

AECOM

AECOM USA GROUP, INC.
1200 SUMMIT AVENUE, SUITE 600
FORT WORTH, TEXAS 76102
WWW.AECOM.COM
817.698.6770

60052528
R135By.dwg

REYNOLD CLARK SURVEY
ABSTRACT 135



POINT OF BEGINNING
SET
N 7,029.756.74
E 1,995,186.48

F.R.C. POINT OF BEGINNING

POSSUM KINGDOM CONTROL MONUMENT NO. 8
S30°54'43"E 796.35'

THE BRAZOS RIVER CONSERVATION AND RECLAMATION DISTRICT
TRACT 43-1-20
VOLUME 180, PAGE 106
D.R.P.C.T.

POSSUM KINGDOM LAKE
THE BRAZOS RIVER CONSERVATION AND RECLAMATION DISTRICT
TRACT 43-1-20
VOLUME 180, PAGE 106
D.R.P.C.T.

LEASE BLOCK R1355
AREA: 10-E
14,746.66 ACRES
642,361 SQ. FT.

LOT: 1-D

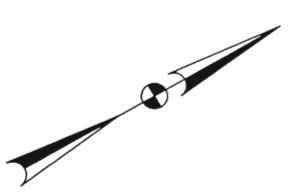
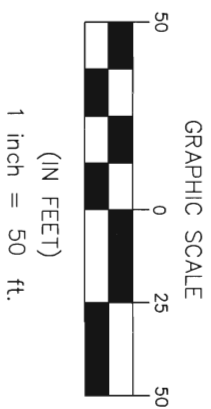
LOT: 1-C

LOT: 1-B

SHEET 3

REVISED: 05/21/10

SHEET 2 OF 7



- LEGEND
- = LEASE CORNER MARKER
 - "AS NOTED"
 - OH = OVERHEAD LINES
 - ⊙ = WATER METER
 - ⊐ = FLAG POLE
 - = TELEPHONE PEDESTAL
 - ⊖ = POWER POLE
 - ⊕ = WATER VALVE
 - ⊗ = IRRIGATION CONTROL VALVE
 - ⊙ = FIRE HYDRANT
 - ⊖ = POST
 - ⊖ = ELECTRIC PEDESTAL
 - ⊖ = MAIL BOX

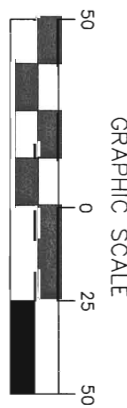
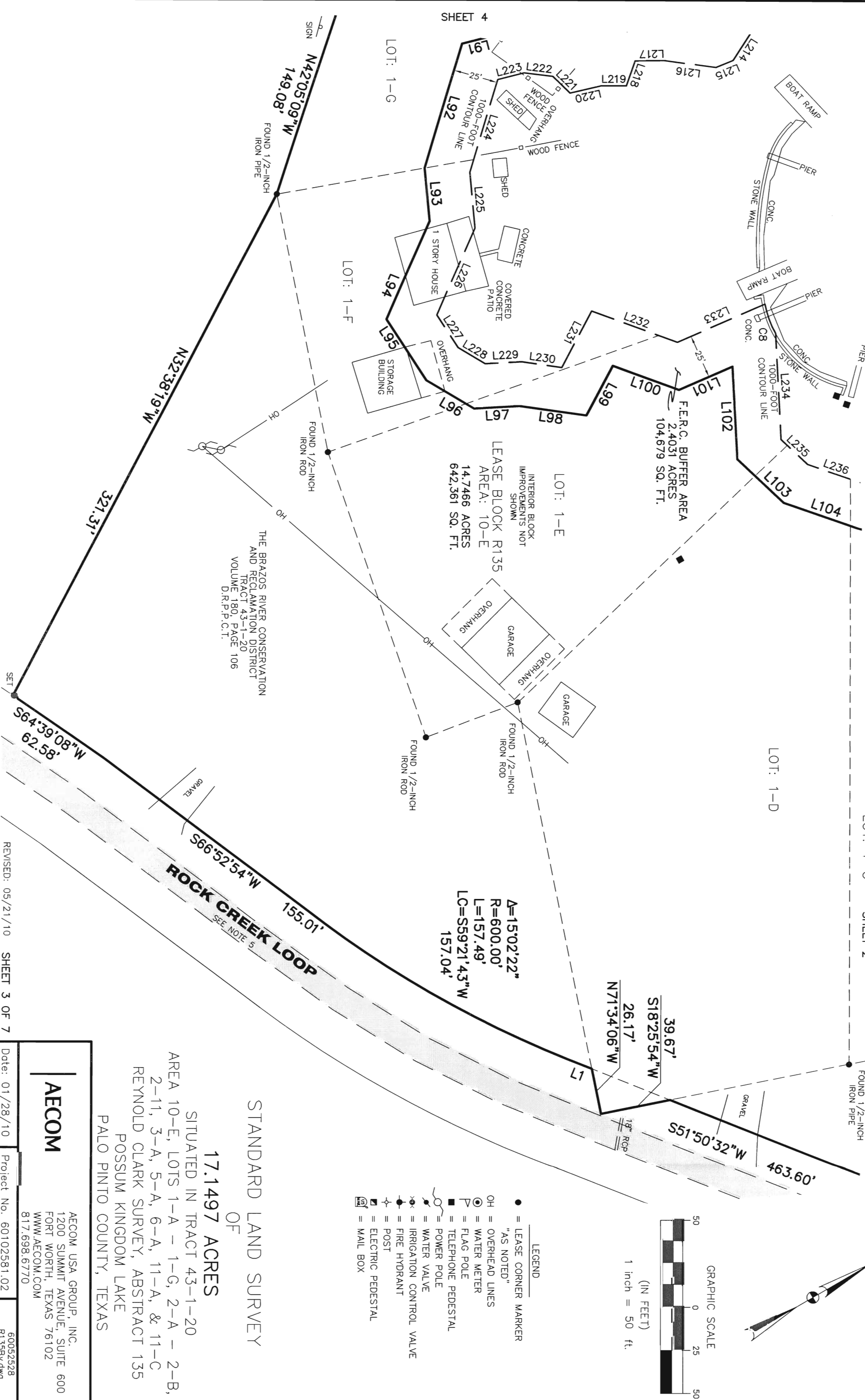
STANDARD LAND SURVEY
OF
17.1497 ACRES
SITUATED IN TRACT 43-1-20
AREA 10-E, LOTS 1-A - 1-G, 2-A - 2-B,
2-11, 3-A, 5-A, 6-A, 11-A, & 11-C
REYNOLD CLARK SURVEY, ABSTRACT 135
POSSUM KINGDOM LAKE
PALO PINTO COUNTY, TEXAS

AECOM

AECOM USA GROUP, INC.
1200 SUMMIT AVENUE, SUITE 600
FORT WORTH, TEXAS 76102
WWW.AECOM.COM
817.698.6770

Date: 01/28/10 Project No. 60102581.02 60052528 R135By.dwg

NO PART OF THIS DRAWING MAY BE REPRODUCED OR TRANSMITTED IN ANY WAY OR FORM (ELECTRONIC, MECHANICAL, PHOTOGRAPHIC, OR OTHERWISE) WITHOUT THE EXPRESS WRITTEN PERMISSION OF AECOM.



- LEGEND
- = LEASE CORNER MARKER
 - "AS NOTED"
 - OH = OVERHEAD LINES
 - ⊙ = WATER METER
 - ⚑ = FLAG POLE
 - ☎ = TELEPHONE PEDESTAL
 - ⚡ = POWER POLE
 - ⚙ = WATER VALVE
 - ⚙ = IRRIGATION CONTROL VALVE
 - ⚙ = FIRE HYDRANT
 - ⚓ = POST
 - ⚡ = ELECTRIC PEDESTAL
 - ☐ = MAIL BOX

THE BRAZOS RIVER CONSERVATION AND RECLAMATION DISTRICT TRACT 43-1-20 VOLUME 180, PAGE 106 D.R.P.C.T.

STANDARD LAND SURVEY
OF
17.1497 ACRES
SITUATED IN TRACT 43-1-20
AREA 10-E, LOTS 1-A - 1-G, 2-A - 2-B,
2-11, 3-A, 5-A, 6-A, 11-A, & 11-C
REYNOLD CLARK SURVEY, ABSTRACT 135
POSSUM KINGDOM LAKE
PALO PINTO COUNTY, TEXAS

AECOM

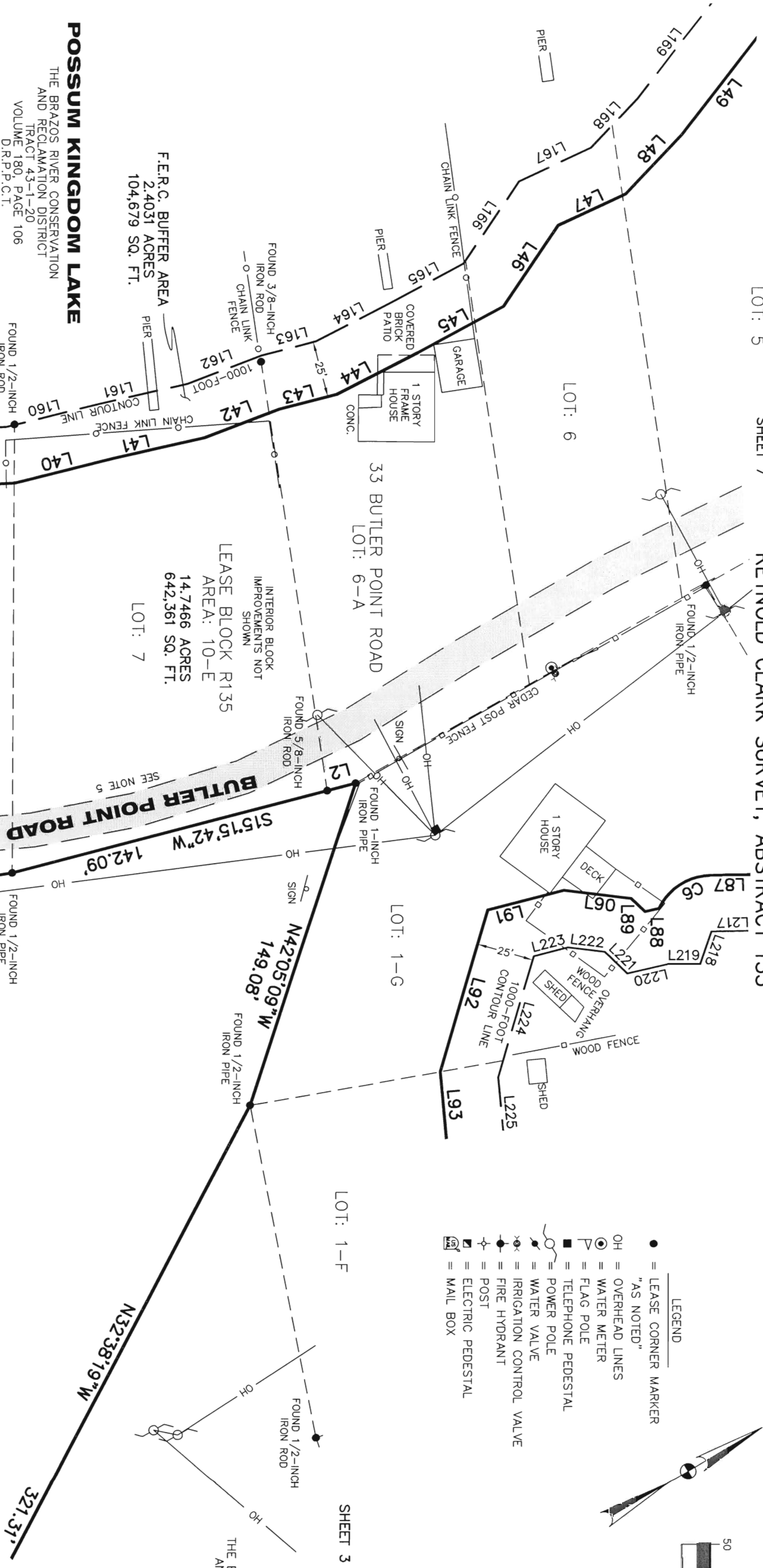
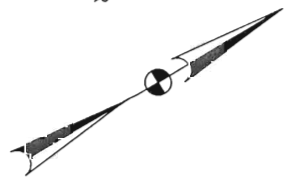
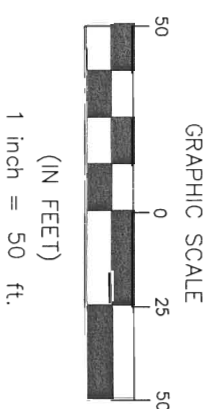
AECOM USA GROUP, INC.
1200 SUMMIT AVENUE, SUITE 600
FORT WORTH, TEXAS 76102
WWW.AECOM.COM
817.698.6770

REVISED: 05/21/10 SHEET 3 OF 7

Date: 01/28/10 Project No. 60102581.02 60052528 R135By.dwg

NO PART OR PARTS OF THIS DRAWING MAY BE REPRODUCED OR TRANSMITTED IN ANY MANNER OR FORM (ELECTRONIC, MECHANICAL, PHOTOCOPYING, OR OTHERWISE) WITHOUT THE EXPRESS WRITTEN PERMISSION OF AECOM.

- LEGEND**
- = LEASE CORNER MARKER "AS NOTED"
 - OH = OVERHEAD LINES
 - ⊙ = WATER METER
 - ▣ = FLAG POLE
 - ▣ = TELEPHONE PEDESTAL
 - ⊖ = POWER POLE
 - ⊖ = WATER VALVE
 - ⊖ = IRRIGATION CONTROL VALVE
 - ⊖ = FIRE HYDRANT
 - ⊖ = POST
 - ⊖ = ELECTRIC PEDESTAL
 - ⊖ = MAIL BOX



THE BRAZOS RIVER CONSERVATION AND RECLAMATION DISTRICT TRACT 43-1-20 VOLUME 180, PAGE 106 D.R.P.C.T.

POSSUM KINGDOM LAKE
THE BRAZOS RIVER CONSERVATION AND RECLAMATION DISTRICT TRACT 43-1-20 VOLUME 180, PAGE 106 D.R.P.C.T.

F.E.R.C. BUFFER AREA
2,4031 ACRES
104,679 SQ. FT.

LEASE BLOCK R135
AREA: 10-E
14,7466 ACRES
642,361 SQ. FT.

THE BRAZOS RIVER CONSERVATION AND RECLAMATION DISTRICT TRACT 43-1-20 VOLUME 180, PAGE 106 D.R.P.C.T.

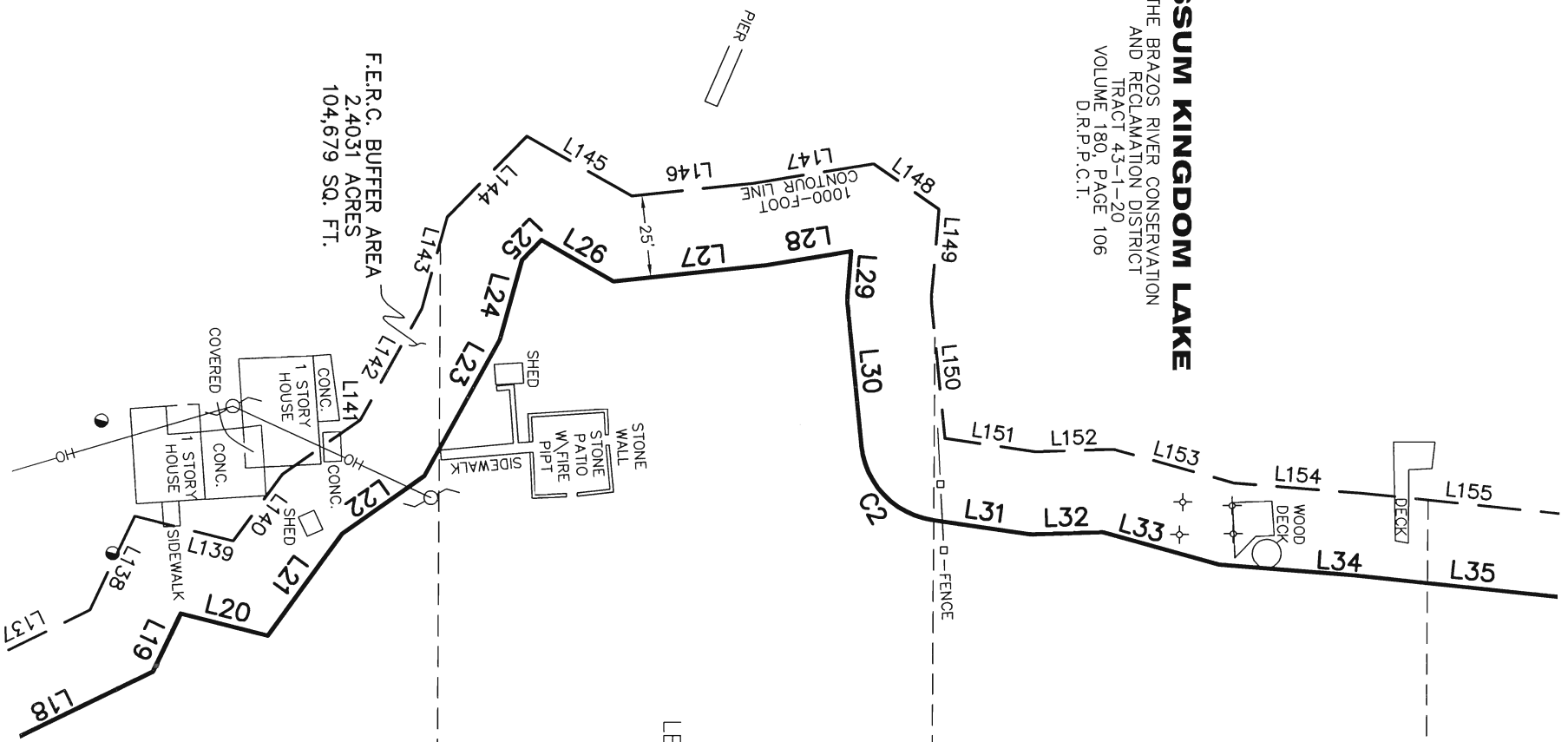
STANDARD LAND SURVEY
OF
17.1497 ACRES
SITUATED IN TRACT 43-1-20
AREA 10-E, LOTS 1-A - 1-G, 2-A - 2-B,
2-11, 3-A, 5-A, 6-A, 11-A, & 11-C
REYNOLD CLARK SURVEY, ABSTRACT 135
POSSUM KINGDOM LAKE
PALO PINTO COUNTY, TEXAS

AECOM

AECOM USA GROUP, INC.
1200 SUMMIT AVENUE, SUITE 600
FORT WORTH, TEXAS 76102
WWW.AECOM.COM
817.698.6770

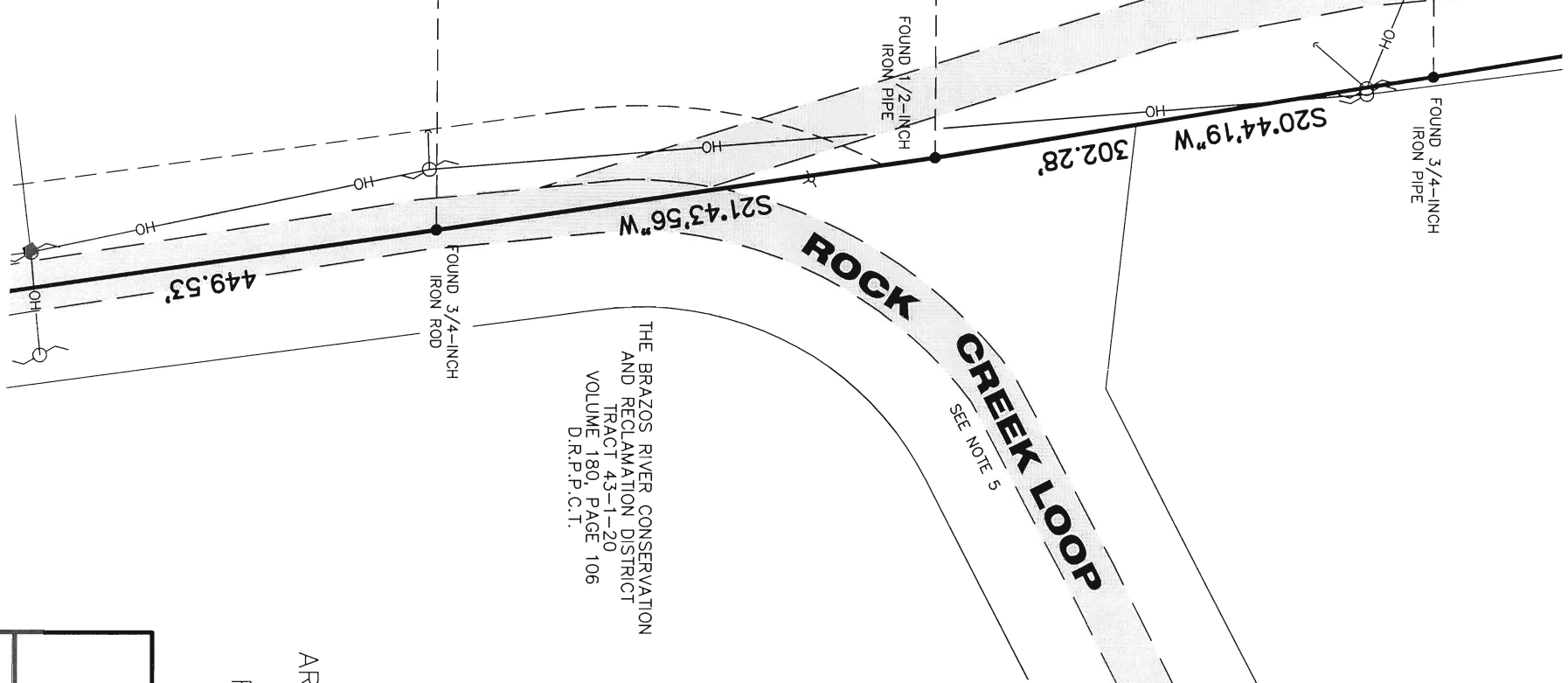
NO PART OF THIS DRAWING MAY BE REPRODUCED OR TRANSMITTED IN ANY MANNER OR FORM (ELECTRONIC, MECHANICAL, PHOTOCOPIING, OR OTHERWISE) WITHOUT THE EXPRESS WRITTEN PERMISSION OF AECOM.

POSSUM KINGDOM LAKE
THE BRAZOS RIVER CONSERVATION
AND RECLAMATION DISTRICT
TRACT 43-1-20
VOLUME 180, PAGE 106
D.R.P.P.C.T.



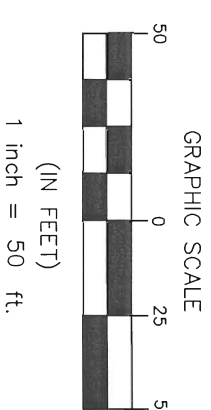
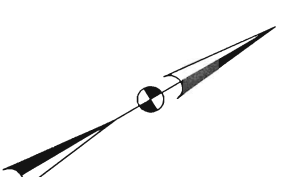
343 ROCK CREEK LOOP
LOT: 11

SHEET 6



REVISED: 05/21/10

SHEET 5 OF 7



- LEGEND
- = LEASE CORNER MARKER
"AS NOTED"
 - OH = OVERHEAD LINES
 - ⊙ = WATER METER
 - ⊕ = FLAG POLE
 - ⊞ = TELEPHONE PEDESTAL
 - ⊚ = POWER POLE
 - ⊛ = WATER VALVE
 - ⊜ = IRRIGATION CONTROL VALVE
 - ⊝ = FIRE HYDRANT
 - ⊞ = POST
 - ⊚ = ELECTRIC PEDESTAL
 - ⊞ = MAIL BOX

STANDARD LAND SURVEY
OF
17.1497 ACRES
SITUATED IN TRACT 43-1-20
AREA 10-E, LOTS 1-A - 1-G, 2-A - 2-B,
2-11, 3-A, 5-A, 6-A, 11-A, & 11-C
REYNOLD CLARK SURVEY, ABSTRACT 135
POSSUM KINGDOM LAKE
PALO PINTO COUNTY, TEXAS

AECOM

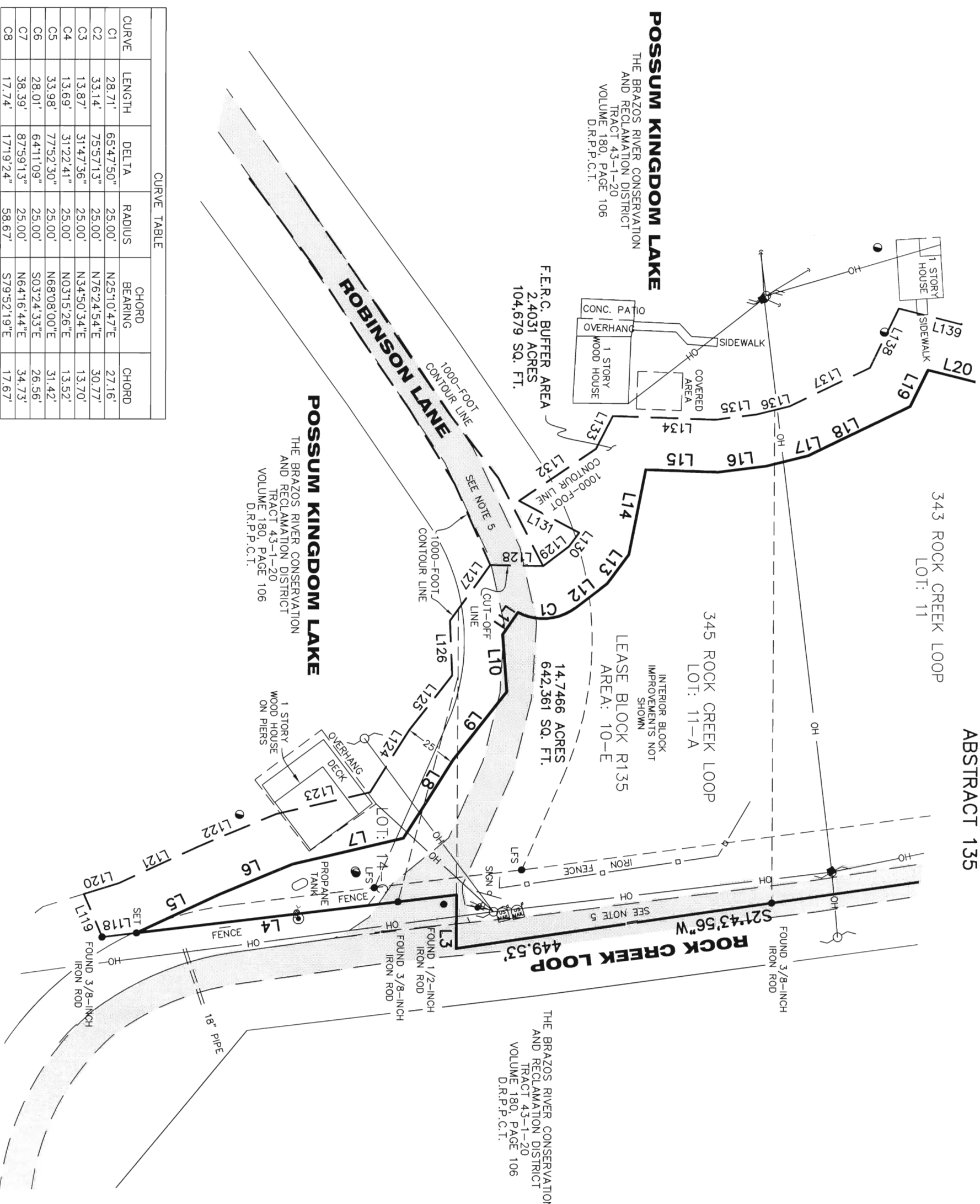
AECOM USA GROUP, INC.
1200 SUMMIT AVENUE, SUITE 600
FORT WORTH, TEXAS 76102
WWW.AECOM.COM
817.698.6770

Date: 01/28/10

Project No. 60102581.02

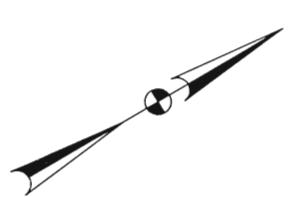
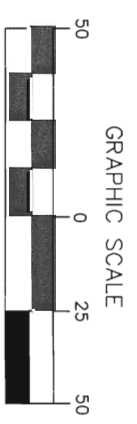
60052528
R135BY.dwg

REYNOLD CLARK SURVEY
ABSTRACT 135



CURVE TABLE

CURVE	LENGTH	DELTA	RADIUS	CHORD BEARING	CHORD
C1	28.71'	65°47'50"	25.00'	N25°10'47"E	27.16'
C2	33.14'	75°57'13"	25.00'	N76°24'54"E	30.77'
C3	13.87'	31°47'36"	25.00'	N34°50'34"E	13.70'
C4	13.69'	31°22'41"	25.00'	N03°15'26"E	13.52'
C5	33.98'	77°52'30"	25.00'	N68°08'00"E	31.42'
C6	28.01'	64°11'09"	25.00'	S03°24'33"E	26.56'
C7	38.39'	87°59'13"	25.00'	N64°16'44"E	34.73'
C8	17.74'	17°19'24"	58.67'	S79°52'19"E	17.67'



- LEGEND
- = LEASE CORNER MARKER "AS NOTED"
 - OH = OVERHEAD LINES
 - ⊙ = WATER METER
 - P = FLAG POLE
 - = TELEPHONE PEDESTAL
 - ⊥ = POWER POLE
 - ⊕ = IRRIGATION CONTROL VALVE
 - ⊕ = FIRE HYDRANT
 - ⊕ = POST
 - ⊕ = ELECTRIC PEDESTAL
 - ⊕ = MAIL BOX

STANDARD LAND SURVEY
OF
17.1497 ACRES

SITUATED IN TRACT 43-1-20
AREA 10-E, LOTS 1-A - 1-G, 2-A - 2-B,
2-11, 3-A, 5-A, 6-A, 11-A, & 11-C
REYNOLD CLARK SURVEY, ABSTRACT 135
POSSUM KINGDOM LAKE
PALO PINTO COUNTY, TEXAS



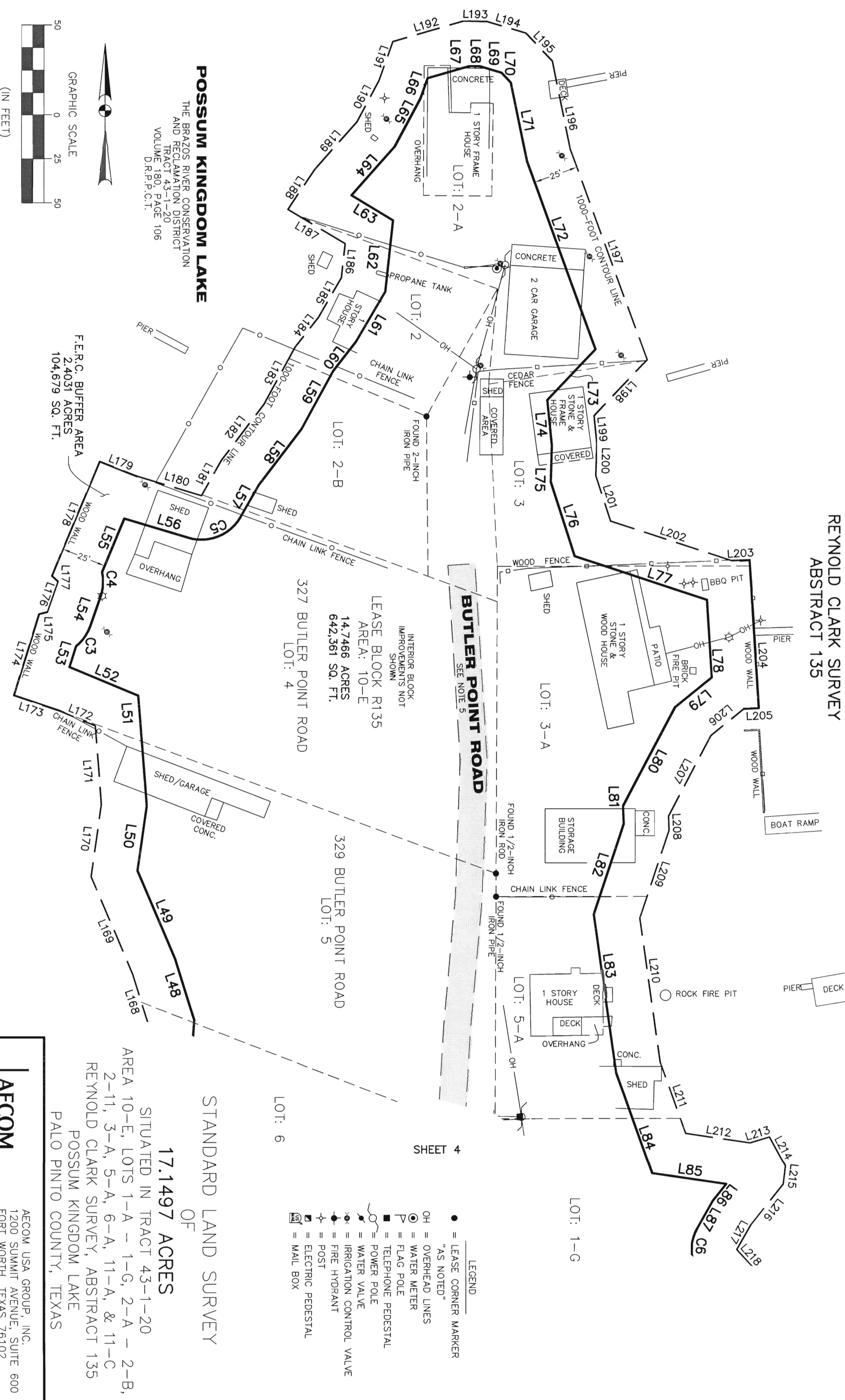
AECOM USA GROUP, INC.
1200 SUMMIT AVENUE, SUITE 600
FORT WORTH, TEXAS 76102
WWW.AECOM.COM
817.698.6770

REVISED: 05/21/10 SHEET 6 OF 7

Date: 01/28/10 Project No. 60102581.02 60052528 R135BY.dwg

NO PART OF THIS DRAWING MAY BE REPRODUCED OR TRANSMITTED IN ANY MANNER OR FORM (ELECTRONIC, MECHANICAL, PHOTOCOPYING, OR OTHERWISE) WITHOUT THE EXPRESS WRITTEN PERMISSION OF AECOM.

REYNOLD CLARK SURVEY
ABSTRACT 135



BUTLER POINT ROAD
SEE NOTE 5

LEASE BLOCK R135
AREA: 10-E
642,361 SQ. FT.
INTERIOR BLOCK
IMPROVEMENTS NOT
SHOWN

327 BUTLER POINT ROAD
LOT: 4

329 BUTLER POINT ROAD
LOT: 5

LOT: 6

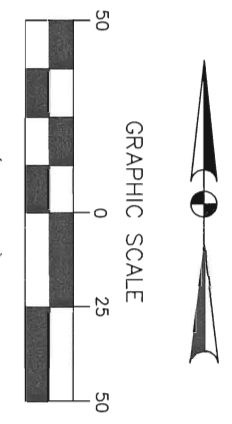
- LEGEND**
- = LEASE CORNER MARKER "AS NOTED"
 - OH = OVERHEAD LINES
 - ⊙ = WATER METER
 - ⊕ = FLAG POLE
 - = TELEPHONE PEDESTAL
 - ⊖ = POWER POLE
 - ⚡ = WATER VALVE
 - ⊕ = IRRIGATION CONTROL VALVE
 - ⚡ = FIRE HYDRANT
 - ⊕ = POST
 - ⊖ = ELECTRIC PEDESTAL
 - ☐ = MAIL BOX

STANDARD LAND SURVEY
OF
17.1497 ACRES

SITUATED IN TRACT 43-1-20
AREA 10-E, LOTS 1-A - 1-G, 2-A - 2-B,
2-11, 3-A, 5-A, 6-A, 11-A, & 11-C
REYNOLD CLARK SURVEY, ABSTRACT 135
POSSUM KINGDOM LAKE
PALO PINTO COUNTY, TEXAS

POSSUM KINGDOM LAKE

THE BRAZOS RIVER CONSERVATION
AND RECLAMATION DISTRICT
TRACT 43-1-20
VOLUME 180, PAGE 106
D.R.P.C.T.



1 inch = 50 ft.

F.E.R.C. BUFFER AREA
2,4031 ACRES
104,679 SQ. FT.

REVISED: 05/21/10

SHEET 7 OF 7

AECOM

AECOM USA GROUP, INC.
1200 SUMMIT AVENUE, SUITE 600
FORT WORTH, TEXAS 76102
WWW.AECOM.COM
817.698.6770

Date: 01/28/10 Project No. 60102581.02

NO PART OR PARTS OF THIS DRAWING MAY BE REPRODUCED OR RETRANSMITTED IN ANY MANNER OR FORM (ELECTRONIC, MECHANICAL, PHOTOCOPYING, OR OTHERWISE) WITHOUT THE EXPRESS WRITTEN PERMISSION OF AECOM.