

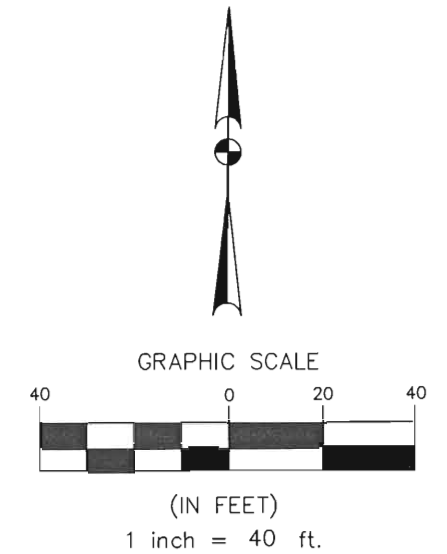
S.P. RR CO. SURVEY
ABSTRACT 420

POSSUM KINGDOM LAKE

THE BRAZOS RIVER CONSERVATION
AND RECLAMATION DISTRICT
TRACT 29-1-72
CAUSE No. 14,971
BOOK M, PAGE 286
J.R.P.P.C.T.

F.E.R.C. BUFFER AREA
2.2809 ACRES
99,357 SQ. FT.

F.E.R.C.
POINT OF
BEGINNING



LEGEND

- = LEASE CORNER MARKER "AS NOTED"
- = TELEPHONE BOX
- ⊙ = WATER METER
- = WATER VALVE
- = FIRE HYDRANT
- OH = OVERHEAD LINES
- = POWER POLE

LEASE BLOCK R131
AREA: 7-A
13.9010 ACRES
605,529 SQ. FT.
INTERIOR BLOCK
IMPROVEMENTS NOT
SHOWN

THE BRAZOS RIVER CONSERVATION
AND RECLAMATION DISTRICT
TRACT 29-1-72
CAUSE No. 14,971
BOOK M, PAGE 286
J.R.P.P.C.T.

LOT: E-16

LOT: 15

STANDARD LAND SURVEY
OF

16.1819 ACRES

SITUATED IN TRACT 29-1-72
AREA 7-A, LOTS 2, 9, 15, E-1-A, E-1-B,
E-8-1, E-8-2, E-3 - E-5, E-7, E-10,
E-12 - E-14, E-16, NE-6 & SE-6
POSSUM KINGDOM LAKE
S.P. RR CO. SURVEY, ABSTRACT 420
PALO PINTO COUNTY, TEXAS

AECOM

AECOM USA GROUP, INC.
1200 SUMMIT AVENUE, SUITE 600
FORT WORTH, TEXAS 76102
WWW.AECOM.COM
817.698.6770

REVISED: 05/21/10 SHEET 2 OF 12

Date: 12/17/09

Project No. 60102581.02

60052528
R131ByR1.dwg

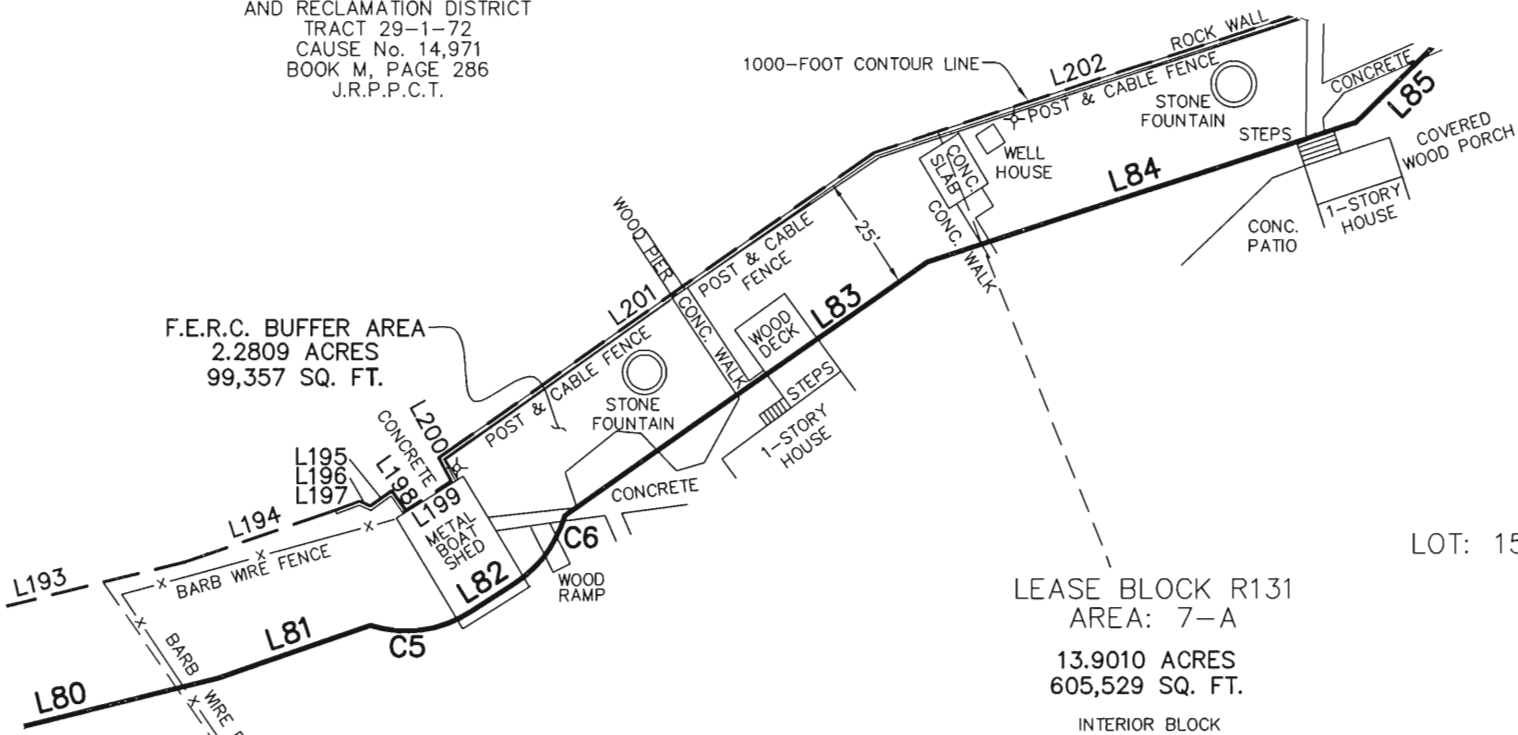
S.P. RR CO. SURVEY
ABSTRACT 420

POSSUM KINGDOM LAKE

THE BRAZOS RIVER CONSERVATION
AND RECLAMATION DISTRICT
TRACT 29-1-72
CAUSE No. 14,971
BOOK M, PAGE 286
J.R.P.P.C.T.

F.E.R.C. BUFFER AREA
2.2809 ACRES
99,357 SQ. FT.

1000-FOOT CONTOUR LINE



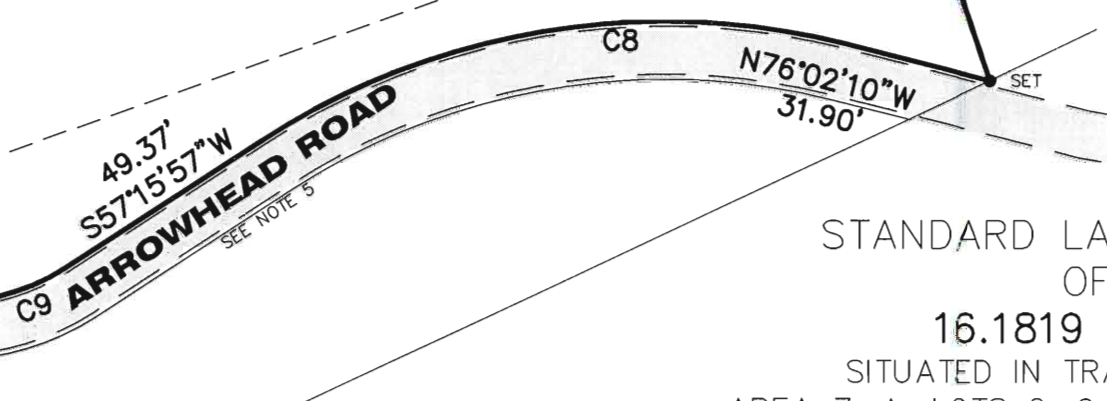
LEASE BLOCK R131
AREA: 7-A
13.9010 ACRES
605,529 SQ. FT.
INTERIOR BLOCK
IMPROVEMENTS NOT
SHOWN

LOT: E-16

LOT: 15

LOT: E-14

LOT: E-13

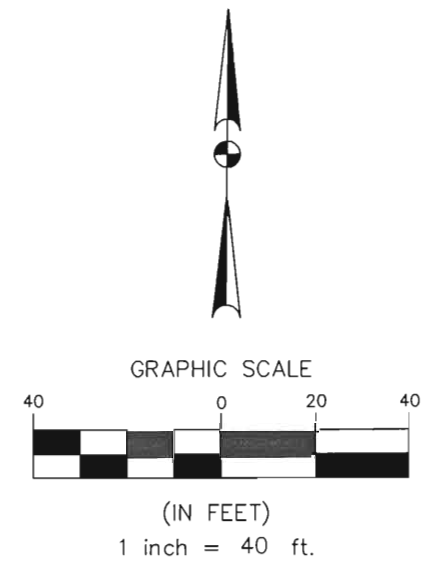


STANDARD LAND SURVEY
OF

16.1819 ACRES
SITUATED IN TRACT 29-1-72
AREA 7-A, LOTS 2, 9, 15, E-1-A, E-1-B,
E-8-1, E-8-2, E-3 - E-5, E-7, E-10,
E-12 - E-14, E-16, NE-6 & SE-6
POSSUM KINGDOM LAKE
S.P. RR CO. SURVEY, ABSTRACT 420
PALO PINTO COUNTY, TEXAS

THE BRAZOS RIVER CONSERVATION
AND RECLAMATION DISTRICT
TRACT 29-1-72
CAUSE No. 14,971
BOOK M, PAGE 286
J.R.P.P.C.T.

CLUB VISTA PROPERTIES, LLC.
VOLUME 1400, PAGE 171
D.R.P.P.C.T.



- LEGEND**
- = LEASE CORNER MARKER "AS NOTED"
 - = TELEPHONE BOX
 - ⊙ = WATER METER
 - = WATER VALVE
 - ⊕ = FIRE HYDRANT
 - OH = OVERHEAD LINES
 - = POWER POLE

AECOM	AECOM USA GROUP, INC. 1200 SUMMIT AVENUE, SUITE 600 FORT WORTH, TEXAS 76102 WWW.AECOM.COM 817.698.6770		
	REVISED: 05/21/10 SHEET 3 OF 12	Date: 12/17/09	Project No. 60102581.02

NO PART OR PARTS OF THIS DRAWING MAY BE REPRODUCED OR TRANSMITTED IN ANY WAY OR FORM (ELECTRONIC, MECHANICAL, PHOTOCOPYING, OR OTHERWISE) WITHOUT THE EXPRESS WRITTEN PERMISSION OF AECOM.

S:\Survey\Projects\60102581\3.0 Ref Docs\Drafting\Undeveloped Strips\Blocks\R131\60052528 R131ByR.dwg 4/20/2010 6:21:39 PM CDT

POSSUM KINGDOM LAKE

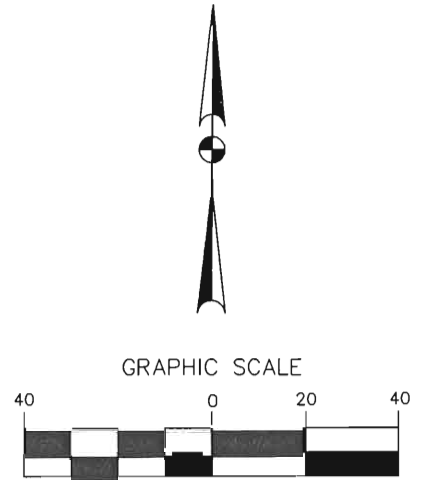
THE BRAZOS RIVER CONSERVATION
AND RECLAMATION DISTRICT
TRACT 29-1-72
CAUSE No. 14,971
BOOK M, PAGE 286
J.R.P.P.C.T.

**S.P. RR CO. SURVEY
ABSTRACT 420**

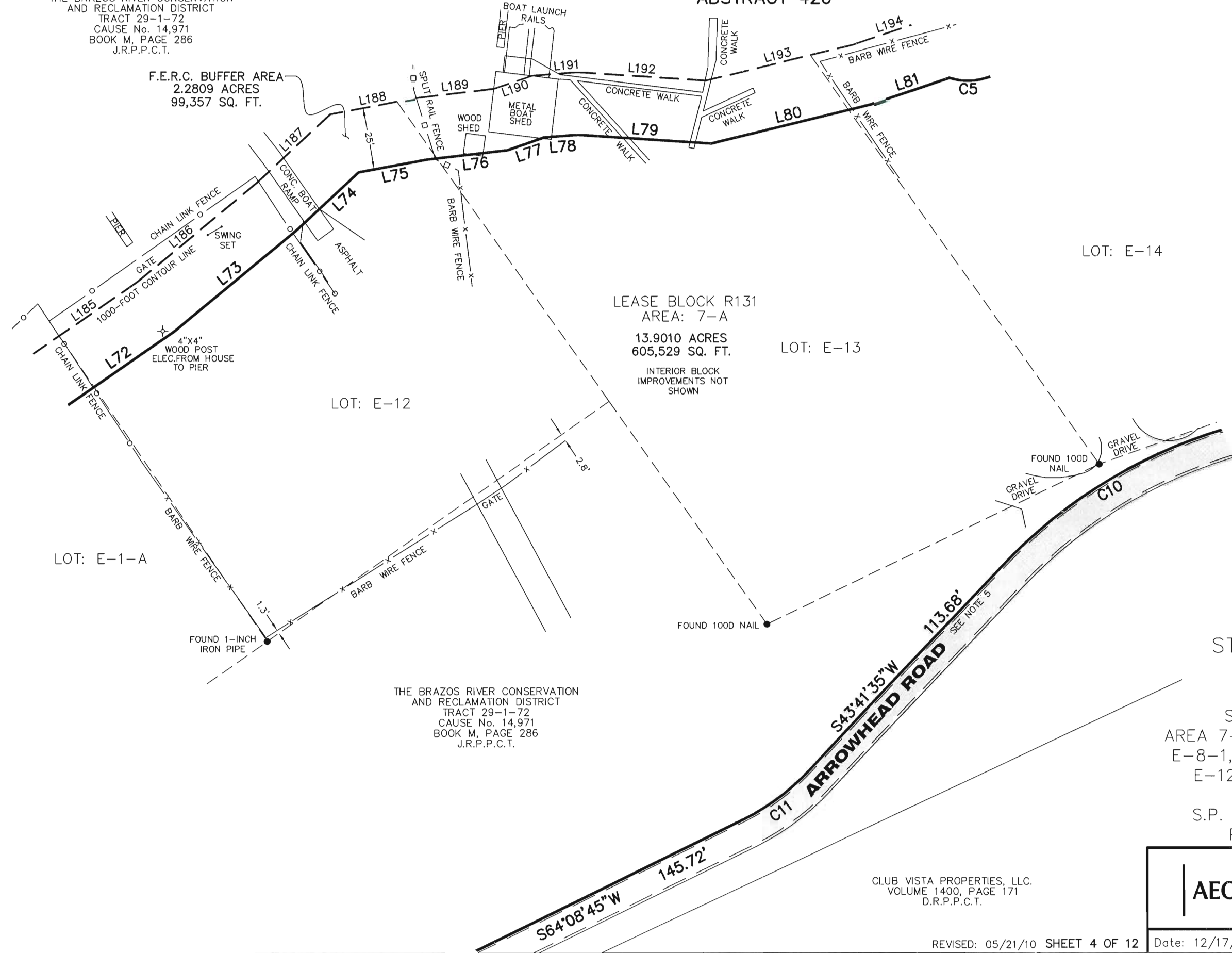
F.E.R.C. BUFFER AREA
2.2809 ACRES
99,357 SQ. FT.

LEASE BLOCK R131
AREA: 7-A
13.9010 ACRES
605,529 SQ. FT.
INTERIOR BLOCK
IMPROVEMENTS NOT
SHOWN

THE BRAZOS RIVER CONSERVATION
AND RECLAMATION DISTRICT
TRACT 29-1-72
CAUSE No. 14,971
BOOK M, PAGE 286
J.R.P.P.C.T.



- LEGEND**
- = LEASE CORNER MARKER "AS NOTED"
 - = TELEPHONE BOX
 - ⊙ = WATER METER
 - ⊙ = WATER VALVE
 - ⊙ = FIRE HYDRANT
 - OH = OVERHEAD LINES
 - = POWER POLE



STANDARD LAND SURVEY
OF
16.1819 ACRES
SITUATED IN TRACT 29-1-72
AREA 7-A, LOTS 2, 9, 15, E-1-A, E-1-B,
E-8-1, E-8-2, E-3 - E-5, E-7, E-10,
E-12 - E-14, E-16, NE-6 & SE-6
POSSUM KINGDOM LAKE
S.P. RR CO. SURVEY, ABSTRACT 420
PALO PINTO COUNTY, TEXAS

AECOM	AECOM USA GROUP, INC. 1200 SUMMIT AVENUE, SUITE 600 FORT WORTH, TEXAS 76102 WWW.AECOM.COM 817.698.6770	
	REVISIONS: 05/21/10 SHEET 4 OF 12	Date: 12/17/09 Project No. 60102581.02

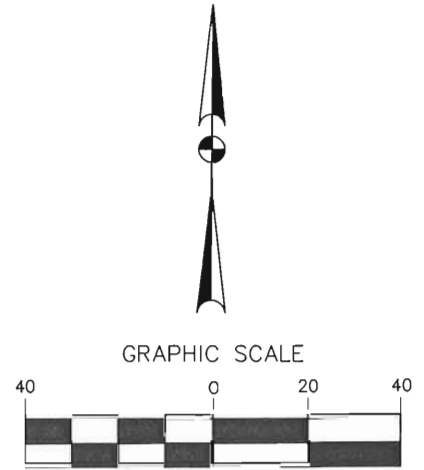
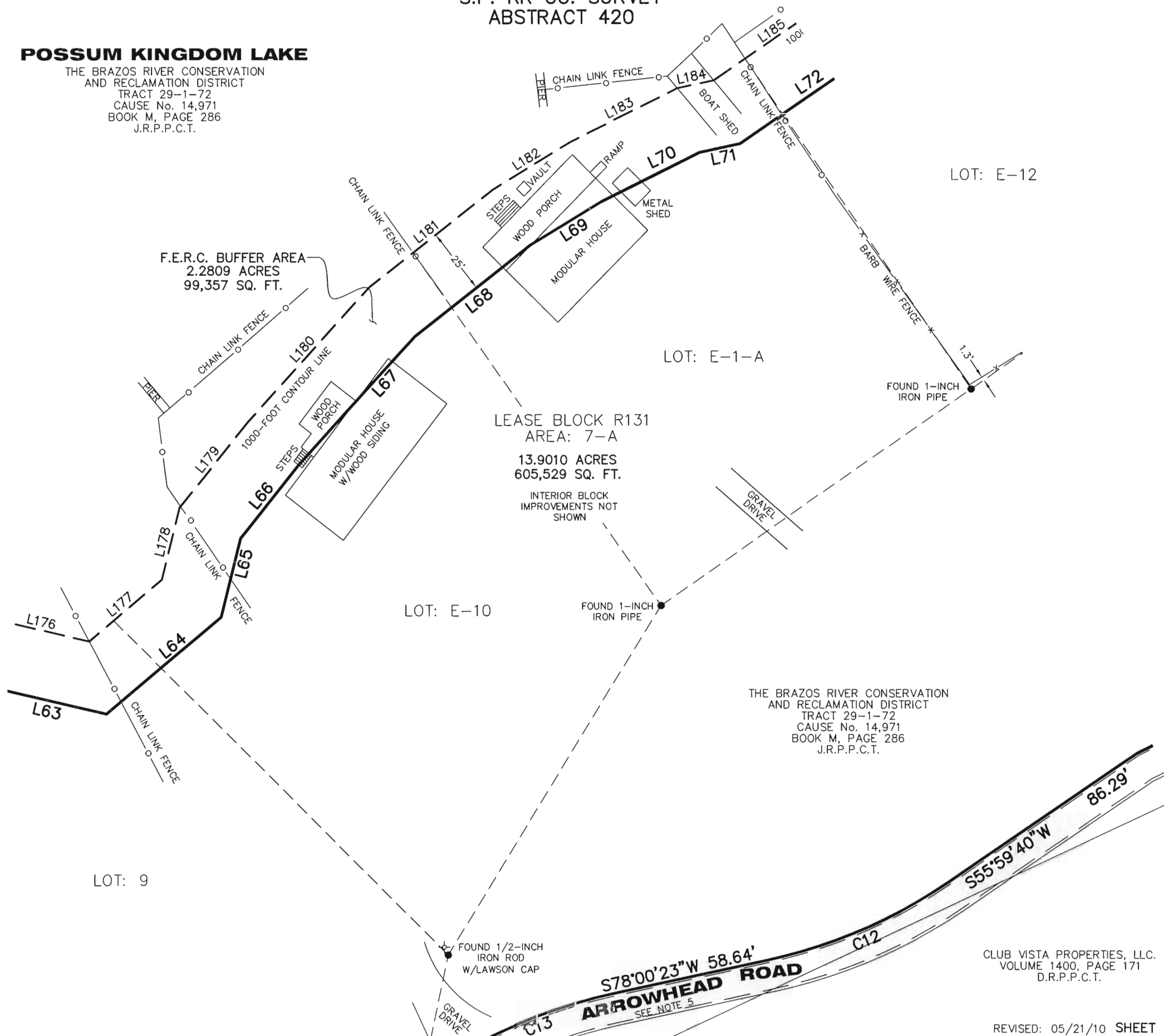
NO PART OR PARTS OF THIS DRAWING MAY BE REPRODUCED OR RETRANSMITTED IN ANY WAY OR FORM (ELECTRONIC, MECHANICAL, PHOTOCOPIING, OR OTHERWISE) WITHOUT THE EXPRESS WRITTEN PERMISSION OF AECOM.

S:\Survey\Projects\60102581\3.0 Ref Docs\Drafting\Undeveloped Strips\Blocks\R131\60052528 R131ByR.dwg 4/20/2010 6:21:39 PM CDT

S.P. RR CO. SURVEY
ABSTRACT 420

POSSUM KINGDOM LAKE

THE BRAZOS RIVER CONSERVATION
AND RECLAMATION DISTRICT
TRACT 29-1-72
CAUSE No. 14,971
BOOK M, PAGE 286
J.R.P.P.C.T.



- LEGEND
- = LEASE CORNER MARKER "AS NOTED"
 - = TELEPHONE BOX
 - ⊙ = WATER METER
 - ⊙ = WATER VALVE
 - ⊙ = FIRE HYDRANT
 - OH = OVERHEAD LINES
 - = POWER POLE

STANDARD LAND SURVEY
OF
16.1819 ACRES
SITUATED IN TRACT 29-1-72
AREA 7-A, LOTS 2, 9, 15, E-1-A, E-1-B,
E-8-1, E-8-2, E-3 - E-5, E-7, E-10,
E-12 - E-14, E-16, NE-6 & SE-6
POSSUM KINGDOM LAKE
S.P. RR CO. SURVEY, ABSTRACT 420
PALO PINTO COUNTY, TEXAS

AECOM	AECOM USA GROUP, INC. 1200 SUMMIT AVENUE, SUITE 600 FORT WORTH, TEXAS 76102 WWW.AECOM.COM 817.698.6770
	60052528 R131ByR1.dwg

CLUB VISTA PROPERTIES, LLC.
VOLUME 1400, PAGE 171
D.R.P.P.C.T.

NO PART OR PARTS OF THIS DRAWING MAY BE REPRODUCED OR RETRANSMITTED IN ANY WAY OR FORM (ELECTRONIC, MECHANICAL, PHOTOCOPYING, OR OTHERWISE) WITHOUT THE EXPRESS WRITTEN PERMISSION OF AECOM.

S:\Survcon\Projects\60102581\3.0 Ref Docs\Drafting\Undeveloped Strips\Blocks\R131\60052528 R131ByR.dwg 4/20/2010 6:21:39 PM CDT

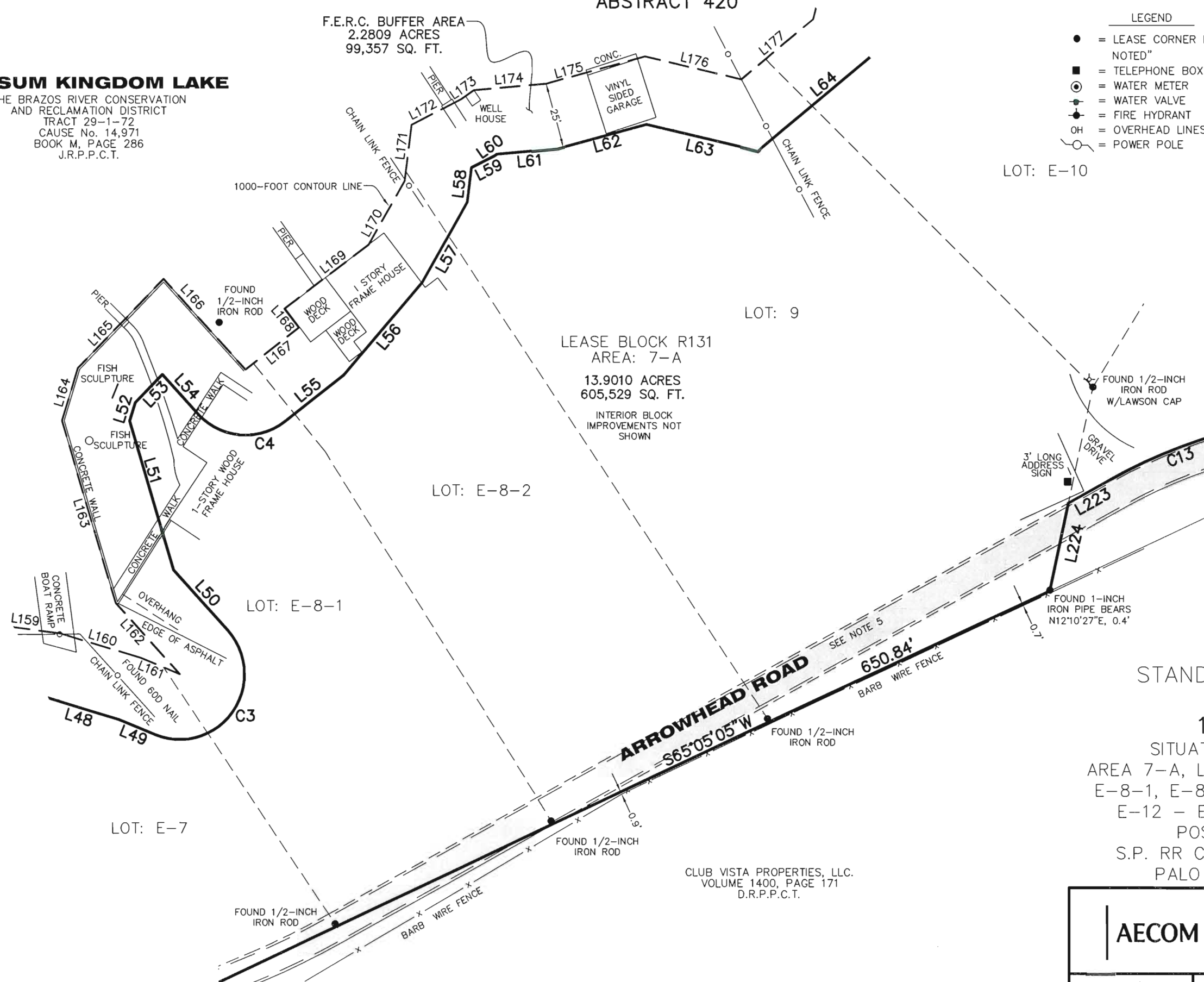
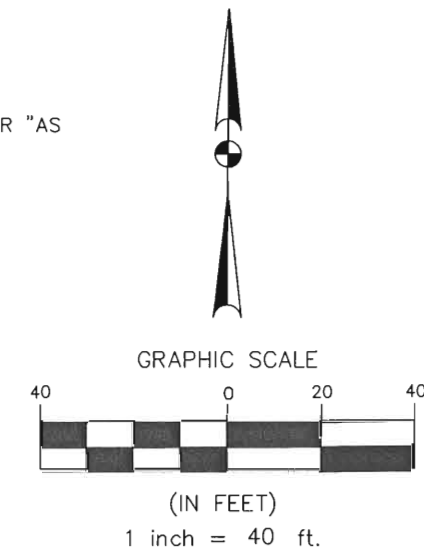
S.P. RR CO. SURVEY
ABSTRACT 420

POSSUM KINGDOM LAKE

THE BRAZOS RIVER CONSERVATION
AND RECLAMATION DISTRICT
TRACT 29-1-72
CAUSE No. 14,971
BOOK M, PAGE 286
J.R.P.P.C.T.

F.E.R.C. BUFFER AREA
2.2809 ACRES
99,357 SQ. FT.

- LEGEND
- = LEASE CORNER MARKER "AS NOTED"
 - = TELEPHONE BOX
 - ⊙ = WATER METER
 - ⊕ = WATER VALVE
 - ⊙ = FIRE HYDRANT
 - OH = OVERHEAD LINES
 - = POWER POLE



LEASE BLOCK R131
AREA: 7-A
13.9010 ACRES
605,529 SQ. FT.
INTERIOR BLOCK
IMPROVEMENTS NOT
SHOWN

THE BRAZOS RIVER CONSERVATION
AND RECLAMATION DISTRICT
TRACT 29-1-72
CAUSE No. 14,971
BOOK M, PAGE 286
J.R.P.P.C.T.

CLUB VISTA PROPERTIES, LLC.
VOLUME 1400, PAGE 171
D.R.P.P.C.T.

CLUB VISTA PROPERTIES, LLC.
VOLUME 1400, PAGE 171
D.R.P.P.C.T.

STANDARD LAND SURVEY
OF

16.1819 ACRES
SITUATED IN TRACT 29-1-72
AREA 7-A, LOTS 2, 9, 15, E-1-A, E-1-B,
E-8-1, E-8-2, E-3 - E-5, E-7, E-10,
E-12 - E-14, E-16, NE-6 & SE-6
POSSUM KINGDOM LAKE
S.P. RR CO. SURVEY, ABSTRACT 420
PALO PINTO COUNTY, TEXAS

AECOM

AECOM USA GROUP, INC.
1200 SUMMIT AVENUE, SUITE 600
FORT WORTH, TEXAS 76102
WWW.AECOM.COM
817.698.6770

REVISED: 05/21/10 SHEET 6 OF 12

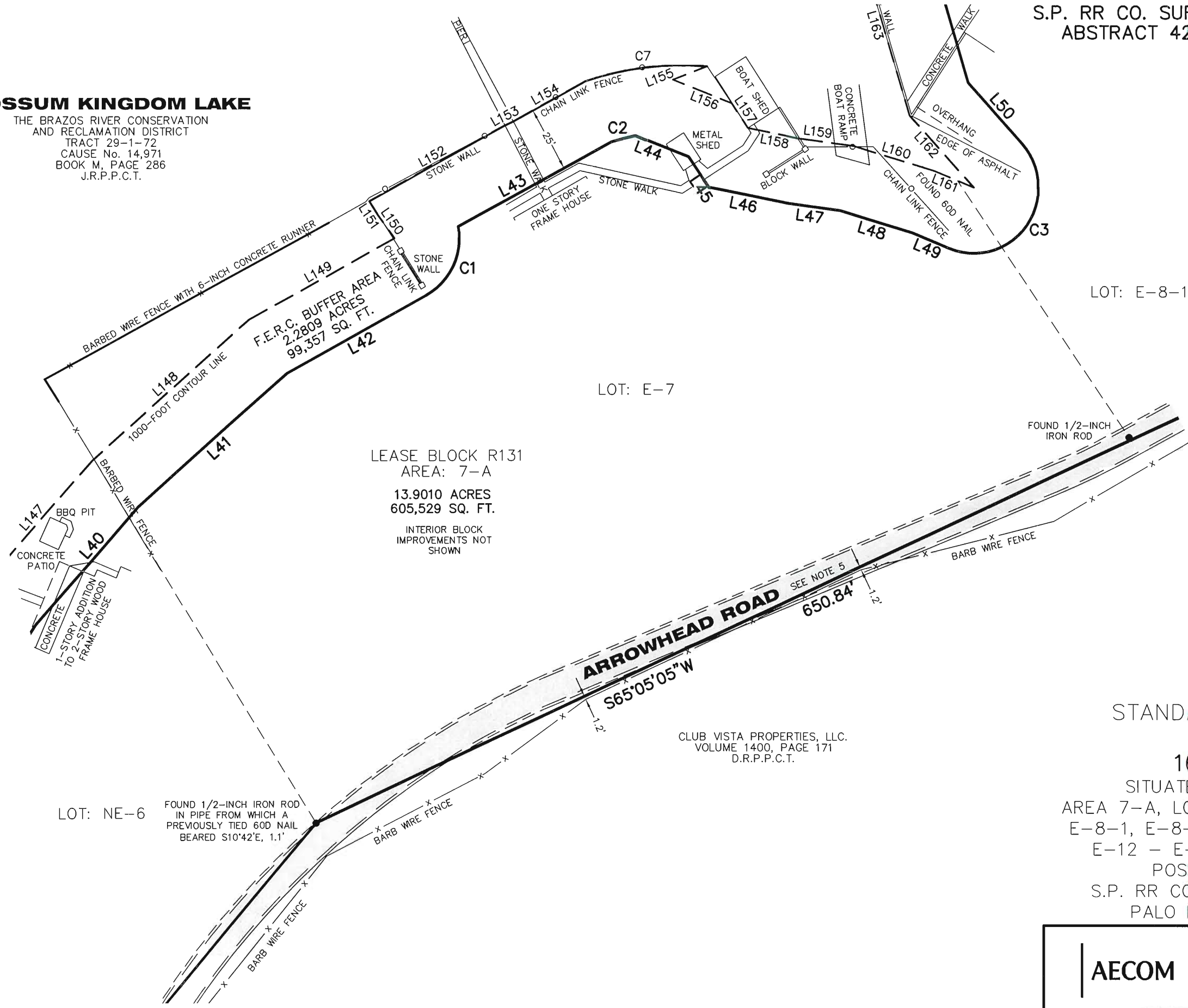
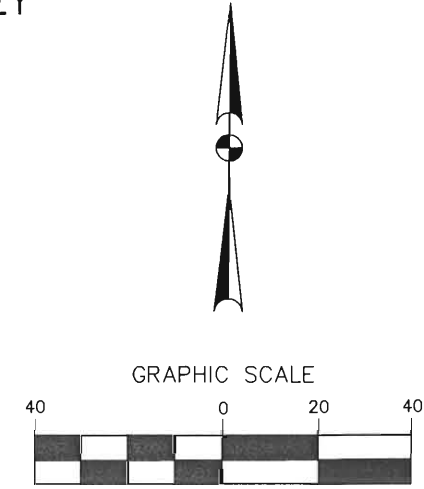
Date: 12/17/09

Project No. 60102581.02

60052528
R131ByR1.dwg

POSSUM KINGDOM LAKE

THE BRAZOS RIVER CONSERVATION
AND RECLAMATION DISTRICT
TRACT 29-1-72
CAUSE No. 14,971
BOOK M, PAGE 286
J.R.P.P.C.T.



LOT: E-8-1

LOT: E-7

LEASE BLOCK R131
AREA: 7-A
13.9010 ACRES
605,529 SQ. FT.
INTERIOR BLOCK
IMPROVEMENTS NOT
SHOWN

LOT: NE-6

FOUND 1/2-INCH IRON ROD
IN PIPE FROM WHICH A
PREVIOUSLY TIED 60D NAIL
BEARED S10°42'E, 1.1'

CLUB VISTA PROPERTIES, LLC.
VOLUME 1400, PAGE 171
D.R.P.P.C.T.

- LEGEND
- = LEASE CORNER MARKER "AS NOTED"
 - = TELEPHONE BOX
 - ⊙ = WATER METER
 - ⊙ = WATER VALVE
 - ⊙ = FIRE HYDRANT
 - OH = OVERHEAD LINES
 - = POWER POLE

STANDARD LAND SURVEY
OF

16.1819 ACRES

SITUATED IN TRACT 29-1-72
AREA 7-A, LOTS 2, 9, 15, E-1-A, E-1-B,
E-8-1, E-8-2, E-3 - E-5, E-7, E-10,
E-12 - E-14, E-16, NE-6 & SE-6
POSSUM KINGDOM LAKE
S.P. RR CO. SURVEY, ABSTRACT 420
PALO PINTO COUNTY, TEXAS

AECOM

AECOM USA GROUP, INC.
1200 SUMMIT AVENUE, SUITE 600
FORT WORTH, TEXAS 76102
WWW.AECOM.COM
817.698.6770

REVISED: 05/21/10 SHEET 7 OF 12

Date: 12/17/09

Project No. 60102581.02

60052528
R131ByR1.dwg

NO PART OR PARTS OF THIS DRAWING MAY BE REPRODUCED OR RE TRANSMITTED IN ANY WAY OR FORM (ELECTRONIC, MECHANICAL, PHOTOCOPYING, OR OTHERWISE) WITHOUT THE EXPRESS WRITTEN PERMISSION OF AECOM.

S:\Survey\Projects\60102581\3.0 Ref Docs\Drafting\Undeveloped Strips\Blocks\R131\60052528 R131ByR.dwg 4/20/2010 6:21:39 PM CDT

S.P. RR CO. SURVEY
ABSTRACT 420

POSSUM KINGDOM LAKE

THE BRAZOS RIVER CONSERVATION
AND RECLAMATION DISTRICT
TRACT 29-1-72
CAUSE No. 14,971
BOOK M, PAGE 286
J.R.P.P.C.T.

F.E.R.C. BUFFER AREA
2.2809 ACRES
99,357 SQ. FT.

LEASE BLOCK R131
AREA: 7-A
13.9010 ACRES
605,529 SQ. FT.

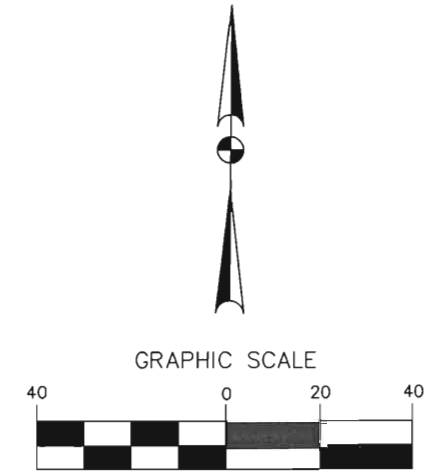
INTERIOR BLOCK
IMPROVEMENTS NOT
SHOWN

CLUB VISTA PROPERTIES, LLC.
VOLUME 1400, PAGE 171
D.R.P.P.C.T.

STANDARD LAND SURVEY
OF

16.1819 ACRES

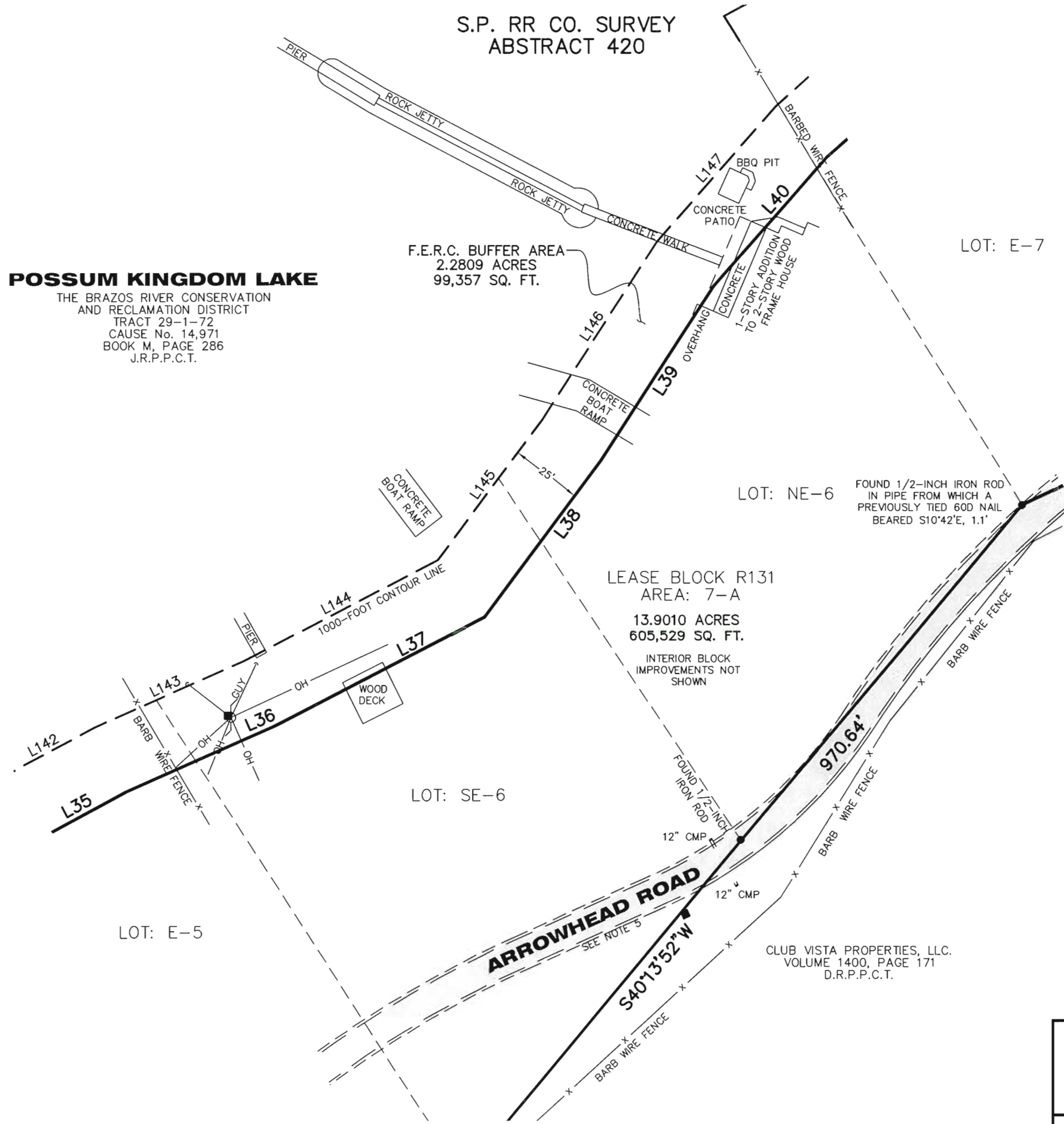
SITUATED IN TRACT 29-1-72
AREA 7-A, LOTS 2, 9, 15, E-1-A, E-1-B,
E-8-1, E-8-2, E-3 - E-5, E-7, E-10,
E-12 - E-14, E-16, NE-6 & SE-6
POSSUM KINGDOM LAKE
S.P. RR CO. SURVEY, ABSTRACT 420
PALO PINTO COUNTY, TEXAS



(IN FEET)
1 inch = 40 ft.

LEGEND

- = LEASE CORNER MARKER "AS NOTED"
- = TELEPHONE BOX
- ⊙ = WATER METER
- = WATER VALVE
- = FIRE HYDRANT
- OH = OVERHEAD LINES
- = POWER POLE



REVISED: 05/21/10 SHEET 8 OF 12

Date: 12/17/09

Project No. 60102581.02

60052528
R131ByR1.dwg

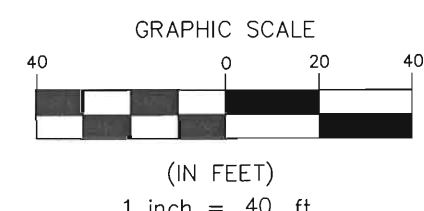
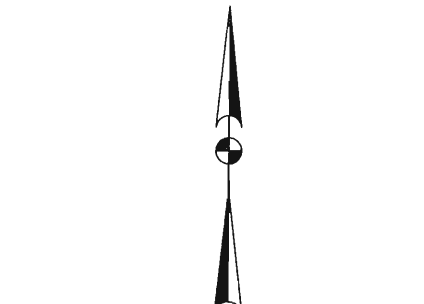
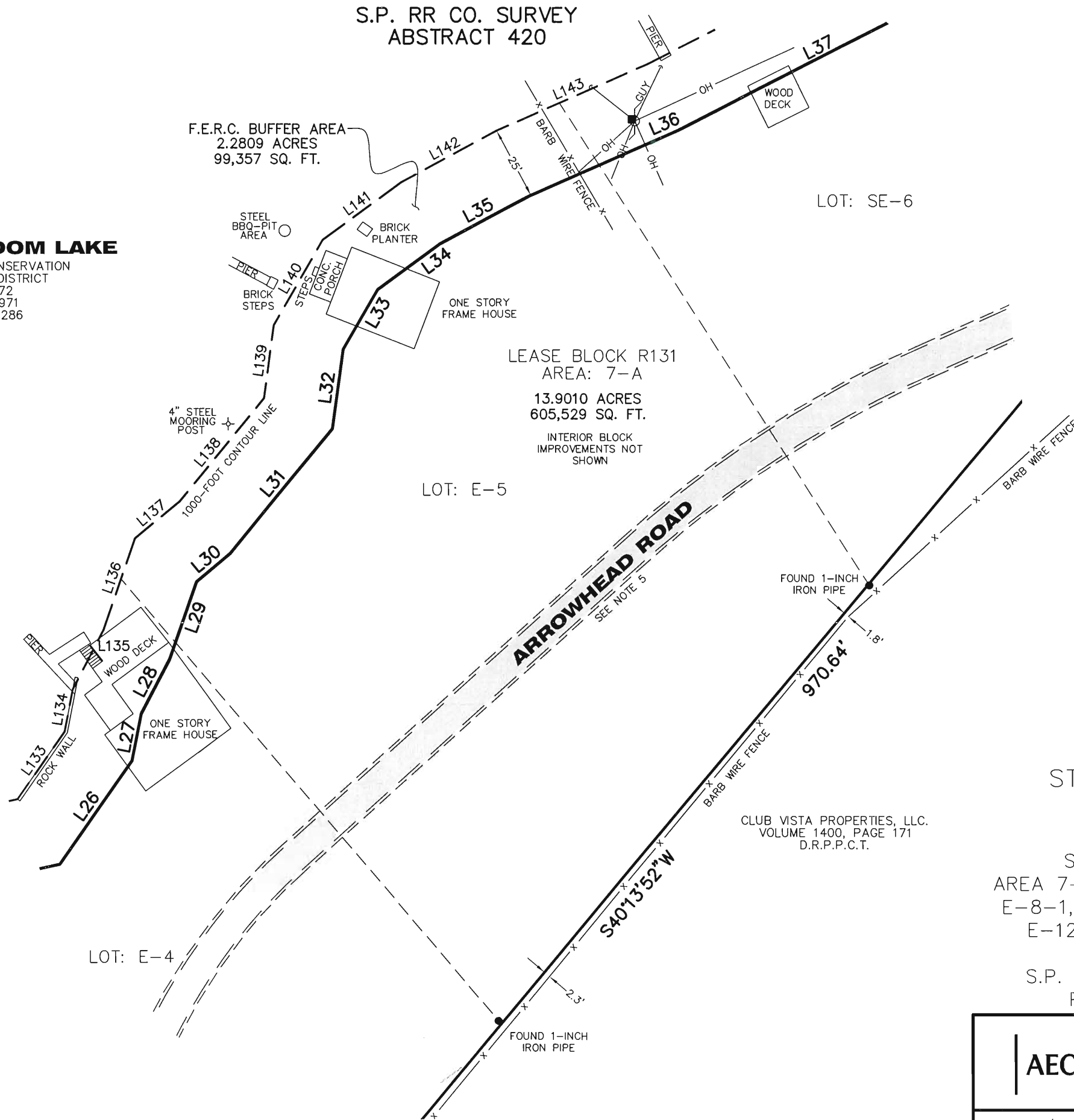
AECOM

AECOM USA GROUP, INC.
1200 SUMMIT AVENUE, SUITE 600
FORT WORTH, TEXAS 76102
WWW.AECOM.COM
817.698.6770

S.P. RR CO. SURVEY
ABSTRACT 420

POSSUM KINGDOM LAKE

THE BRAZOS RIVER CONSERVATION
AND RECLAMATION DISTRICT
TRACT 29-1-72
CAUSE No. 14,971
BOOK M, PAGE 286
J.R.P.C.T.



- LEGEND
- = LEASE CORNER MARKER "AS NOTED"
 - = TELEPHONE BOX
 - ⊙ = WATER METER
 - ⊕ = WATER VALVE
 - = FIRE HYDRANT
 - OH = OVERHEAD LINES
 - = POWER POLE

STANDARD LAND SURVEY
OF
16.1819 ACRES
SITUATED IN TRACT 29-1-72
AREA 7-A, LOTS 2, 9, 15, E-1-A, E-1-B,
E-8-1, E-8-2, E-3 - E-5, E-7, E-10,
E-12 - E-14, E-16, NE-6 & SE-6
POSSUM KINGDOM LAKE
S.P. RR CO. SURVEY, ABSTRACT 420
PALO PINTO COUNTY, TEXAS

AECOM	AECOM USA GROUP, INC. 1200 SUMMIT AVENUE, SUITE 600 FORT WORTH, TEXAS 76102 WWW.AECOM.COM 817.698.6770
	60052528 R131ByR1.dwg

REVISED: 05/21/10 SHEET 9 OF 12 Date: 12/17/09 Project No. 60102581.02

NO PART OR PARTS OF THIS DRAWING MAY BE REPRODUCED OR RETRANSMITTED IN ANY WAY OR FORM (ELECTRONIC, MECHANICAL, PHOTOCOPYING, OR OTHERWISE) WITHOUT THE EXPRESS WRITTEN PERMISSION OF AECOM.

S:\Survey\Projects\60102581\3.0 Ref Docs\Drafting\Undeveloped Strips\Blocks\R131\60052528 R131ByR1.dwg 4/20/2010 6:21:39 PM CDT

S.P. RR CO. SURVEY
ABSTRACT 420

POSSUM KINGDOM LAKE

THE BRAZOS RIVER CONSERVATION
AND RECLAMATION DISTRICT
TRACT 29-1-72
CAUSE No. 14,971
BOOK M, PAGE 286
J.R.P.P.C.T.

F.E.R.C. BUFFER AREA
2.2809 ACRES
99,357 SQ. FT.

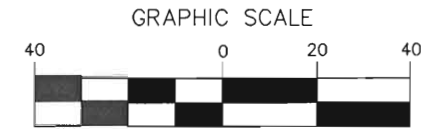
LEASE BLOCK R131
AREA: 7-A
13.9010 ACRES
605,529 SQ. FT.
INTERIOR BLOCK
IMPROVEMENTS NOT
SHOWN

LOT: E-5

LOT: E-4

LOT: E-3

LOT: 2



(IN FEET)
1 inch = 40 ft.

LEGEND

- = LEASE CORNER MARKER "AS NOTED"
- = TELEPHONE BOX
- ⊙ = WATER METER
- ⊙ = WATER VALVE
- ⊙ = FIRE HYDRANT
- OH = OVERHEAD LINES
- ⊖ = POWER POLE

ARROWHEAD ROAD

STANDARD LAND SURVEY
OF

16.1819 ACRES

SITUATED IN TRACT 29-1-72
AREA 7-A, LOTS 2, 9, 15, E-1-A, E-1-B,
E-8-1, E-8-2, E-3 - E-5, E-7, E-10,
E-12 - E-14, E-16, NE-6 & SE-6
POSSUM KINGDOM LAKE
S.P. RR CO. SURVEY, ABSTRACT 420
PALO PINTO COUNTY, TEXAS

CLUB VISTA PROPERTIES, LLC.
VOLUME 1400, PAGE 171
D.R.P.P.C.T.

AECOM

AECOM USA GROUP, INC.
1200 SUMMIT AVENUE, SUITE 600
FORT WORTH, TEXAS 76102
WWW.AECOM.COM
817.698.6770

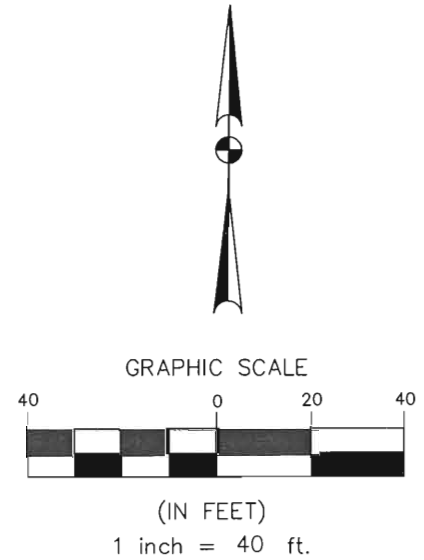
REVISED: 05/21/10 SHEET 10 OF 12

Date: 12/17/09

Project No. 60102581.02

60052528
R131ByR1.dwg

S.P. RR CO. SURVEY
ABSTRACT 420

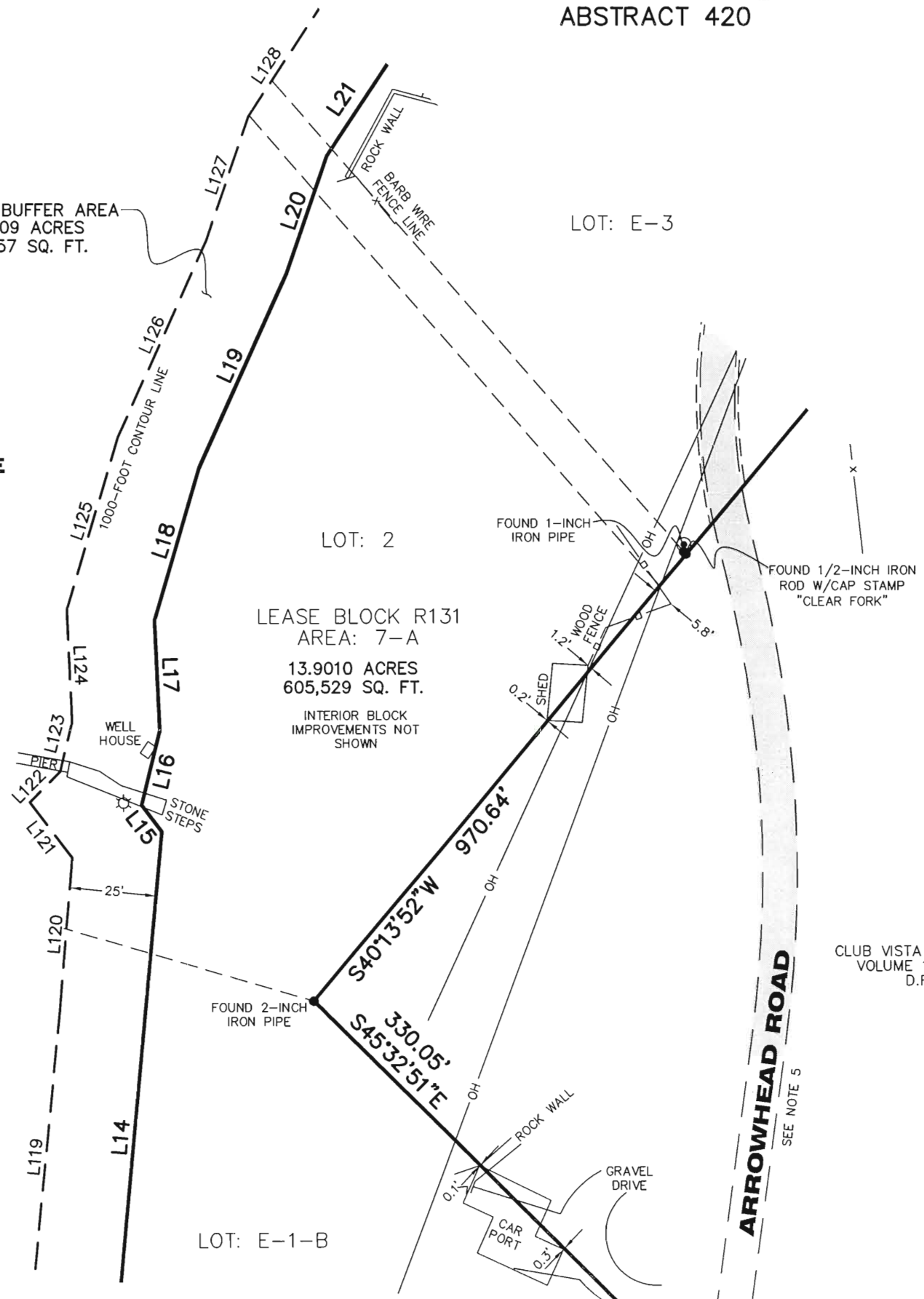


- LEGEND
- = LEASE CORNER MARKER "AS NOTED"
 - = TELEPHONE BOX
 - ⊙ = WATER METER
 - ⊕ = WATER VALVE
 - ⦿ = FIRE HYDRANT
 - OH = OVERHEAD LINES
 - = POWER POLE

POSSUM KINGDOM LAKE

THE BRAZOS RIVER CONSERVATION
AND RECLAMATION DISTRICT
TRACT 29-1-72
CAUSE No. 14,971
BOOK M, PAGE 286
J.R.P.P.C.T.

F.E.R.C. BUFFER AREA
2.2809 ACRES
99,357 SQ. FT.



LEASE BLOCK R131
AREA: 7-A
13.9010 ACRES
605,529 SQ. FT.
INTERIOR BLOCK
IMPROVEMENTS NOT
SHOWN

CLUB VISTA PROPERTIES, LLC.
VOLUME 1400, PAGE 171
D.R.P.P.C.T.

STANDARD LAND SURVEY
OF

16.1819 ACRES
SITUATED IN TRACT 29-1-72
AREA 7-A, LOTS 2, 9, 15, E-1-A, E-1-B,
E-8-1, E-8-2, E-3 - E-5, E-7, E-10,
E-12 - E-14, E-16, NE-6 & SE-6
POSSUM KINGDOM LAKE
S.P. RR CO. SURVEY, ABSTRACT 420
PALO PINTO COUNTY, TEXAS

AECOM

AECOM USA GROUP, INC.
1200 SUMMIT AVENUE, SUITE 600
FORT WORTH, TEXAS 76102
WWW.AECOM.COM
817.698.6770

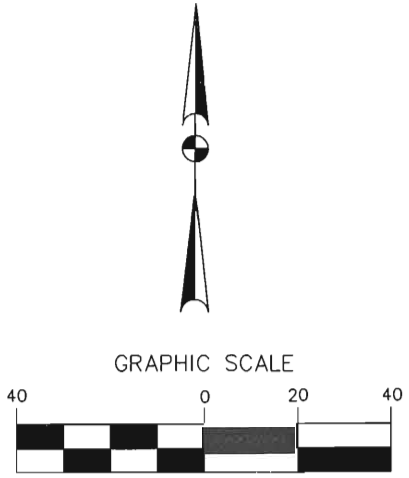
REVISED: 05/21/10 SHEET 11 OF 12

Date: 12/17/09

Project No. 60102581.02

60052528
R131ByR1.dwg

S.P. RR CO. SURVEY
ABSTRACT 420



(IN FEET)
1 inch = 40 ft.

- LEGEND
- = LEASE CORNER MARKER "AS NOTED"
 - = TELEPHONE BOX
 - ⊙ = WATER METER
 - ⊙ = WATER VALVE
 - ⊙ = FIRE HYDRANT
 - OH = OVERHEAD LINES
 - = POWER POLE

POSSUM KINGDOM LAKE
THE BRAZOS RIVER CONSERVATION
AND RECLAMATION DISTRICT
TRACT 29-1-72
CAUSE No. 14,971
BOOK M, PAGE 286
J.R.P.P.C.T.

LEASE BLOCK R131
AREA: 7-A
13.9010 ACRES
605,529 SQ. FT.
INTERIOR BLOCK
IMPROVEMENTS NOT
SHOWN

CLUB VISTA PROPERTIES, LLC.
VOLUME 1400, PAGE 171
D.R.P.P.C.T.

STANDARD LAND SURVEY
OF
16.1819 ACRES
SITUATED IN TRACT 29-1-72
AREA 7-A, LOTS 2, 9, 15, E-1-A, E-1-B,
E-8-1, E-8-2, E-3 - E-5, E-7, E-10,
E-12 - E-14, E-16, NE-6 & SE-6
POSSUM KINGDOM LAKE
S.P. RR CO. SURVEY, ABSTRACT 420
PALO PINTO COUNTY, TEXAS

POSSUM KINGDOM LAKE
THE BRAZOS RIVER CONSERVATION
AND RECLAMATION DISTRICT
TRACT 29-1-72
CAUSE No. 14,971
BOOK M, PAGE 286
J.R.P.P.C.T.

AECOM	AECOM USA GROUP, INC. 1200 SUMMIT AVENUE, SUITE 600 FORT WORTH, TEXAS 76102 WWW.AECOM.COM 817.698.6770	
	Date: 12/17/09	Project No. 60102581.02

REVISED: 05/21/10 SHEET 12 OF 12

NO PART OR PARTS OF THIS DRAWING MAY BE REPRODUCED OR RETRANSMITTED IN ANY WAY OR FORM (ELECTRONIC, MECHANICAL, PHOTOCOPYING, OR OTHERWISE) WITHOUT THE EXPRESS WRITTEN PERMISSION OF AECOM.

S:\Survey\Projects\60102581\3.0 Ref Docs\Drafting\Undeveloped Strips\Blocks\R131\60052528 R131ByR1.dwg 4/20/2010 6:21:39 PM CDT