

VICINITY MAP
NOT TO SCALE

ACREAGE TABLE
LEASE BLOCK: 5.6894 ACRES
F.E.R.C. BUFFER AREA: 1.0709 ACRES
SURVEY BLOCK: 6.7603 ACRES TOTAL

LINE TABLE		
LINE	BEARING	DISTANCE
L1	S27°21'49"W	40.91'
L2	S11°12'22"W	30.20'
L3	S27°26'35"W	30.58'
L4	S12°08'55"W	68.64'
L5	S46°19'23"W	43.41'
L6	S53°57'27"W	25.88'
L7	S38°40'24"W	13.06'
L8	S75°18'55"W	87.41'
L9	N74°38'28"W	29.90'
L10	S72°44'03"W	43.02'
L11	S49°55'09"W	31.54'
L12	S78°55'52"W	9.13'
L13	S85°11'55"W	19.15'
L14	N70°22'55"W	21.88'
L15	N39°54'22"W	34.79'
L16	N17°05'05"W	33.46'
L17	N35°49'44"W	48.43'
L18	S76°16'04"W	40.20'
L19	S74°09'04"W	37.43'
L20	N74°47'00"W	42.57'
L21	N50°03'01"W	58.99'
L22	N21°33'21"W	95.07'
L23	N40°25'45"W	78.17'

LINE TABLE		
LINE	BEARING	DISTANCE
L24	N49°25'34"W	51.02'
L25	N43°31'26"W	42.83'
L26	N15°48'09"W	27.96'
L27	N16°24'01"E	42.61'
L28	N25°02'06"E	43.86'
L29	N26°05'34"E	50.24'
L30	N31°28'41"E	57.91'
L31	N22°12'44"E	102.29'
L32	N07°20'26"W	67.52'
L33	N49°23'24"W	40.58'
L34	N35°42'35"E	53.99'
L35	N46°36'13"E	50.89'
L36	N29°27'28"E	25.69'
L37	N04°39'02"W	32.26'
L38	N08°19'40"E	28.30'
L39	N28°51'07"E	11.80'
L40	N86°53'46"E	11.19'
L41	N85°37'34"E	26.37'
L42	N82°50'36"E	17.64'
L43	S71°18'52"E	25.29'
L44	S27°21'49"W	41.18'
L45	S11°12'22"W	30.22'
L46	S27°26'35"W	30.79'

LINE TABLE		
LINE	BEARING	DISTANCE
L47	S12°08'55"W	72.97'
L48	S46°19'23"W	52.77'
L49	S53°57'27"W	24.20'
L50	S38°40'24"W	17.99'
L51	N74°38'28"W	29.29'
L52	S72°44'03"W	30.66'
L53	S49°55'09"W	32.96'
L54	S78°55'52"W	16.97'
L55	S85°11'55"W	25.93'
L56	N70°22'55"W	33.18'
L57	S35°14'25"W	30.37'
L58	N49°52'28"W	12.72'
L59	N36°21'23"E	32.00'
L60	N39°54'22"W	35.09'
L61	N17°05'05"W	34.38'
L62	N35°49'44"W	27.48'
L63	S76°16'04"W	22.91'
L64	S74°09'04"W	43.92'
L65	N74°47'00"W	55.00'
L66	N50°03'01"W	70.81'
L67	N21°33'21"W	97.27'
L68	N40°25'45"W	72.05'
L69	N49°25'34"W	50.35'

LINE TABLE		
LINE	BEARING	DISTANCE
L70	N43°31'26"W	50.28'
L71	N15°48'09"W	41.34'
L72	N16°24'01"E	51.71'
L73	N25°02'06"E	45.98'
L74	N26°05'34"E	51.65'
L75	N31°28'41"E	57.06'
L76	N22°12'44"E	93.67'
L77	N07°20'26"W	51.32'
L78	N49°23'24"W	37.32'
L79	N58°15'59"W	17.76'
L80	N38°45'14"E	22.06'
L81	N35°42'35"E	59.94'
L82	N46°36'13"E	49.50'
L83	N29°27'28"E	21.92'
L84	N54°00'39"W	4.24'
L85	N48°33'34"W	8.53'
L86	N04°39'02"W	45.52'
L87	N08°19'40"E	35.67'
L88	N28°51'07"E	30.19'
L89	N86°53'46"E	24.79'
L90	N85°35'56"E	25.74'
L91	S72°13'10"E	39.19'

CURVE TABLE					
CURVE	LENGTH	DELTA	RADIUS	CHORD BEARING	CHORD
C1	36.96'	84°42'57"	25.00'	N12°54'00"W	33.69'
C2	21.22'	48°37'20"	25.00'	N58°31'56"E	20.58'

SURVEYORS CERTIFICATE

TO: BRAZOS RIVER AUTHORITY, PATTERSON PK LAND PARTNERSHIP, LTD., AND HERITAGE TITLE COMPANY OF AUSTIN, INC.

I, JAMES T. MULLER, A REGISTERED PROFESSIONAL LAND SURVEYOR IN THE STATE OF TEXAS, REGISTRATION NUMBER 4522, HEREBY STATE THAT A SURVEY OF THE REAL PROPERTY DESCRIBED IN SEPARATE LEGAL DESCRIPTION AS NOTED HEREON, WAS ACTUALLY MADE UPON THE GROUND UNDER MY DIRECTION AND SUPERVISION, AND THAT TO THE BEST OF MY PROFESSIONAL KNOWLEDGE AND BELIEF, THE INFORMATION SHOWN HEREON IS CORRECT AS DETERMINED BY SAID SURVEY.

THIS SURVEY SUBSTANTIALLY COMPLIES WITH THE CURRENT TEXAS SOCIETY OF PROFESSIONAL SURVEYORS STANDARDS AND SPECIFICATIONS FOR A CATEGORY 1B, CONDITION II SURVEY.

JAMES T. MULLER
REGISTERED PROFESSIONAL LAND SURVEYOR
TEXAS REGISTRATION NO. 4522



DATE: FEBRUARY 12, 2010

NOTES:

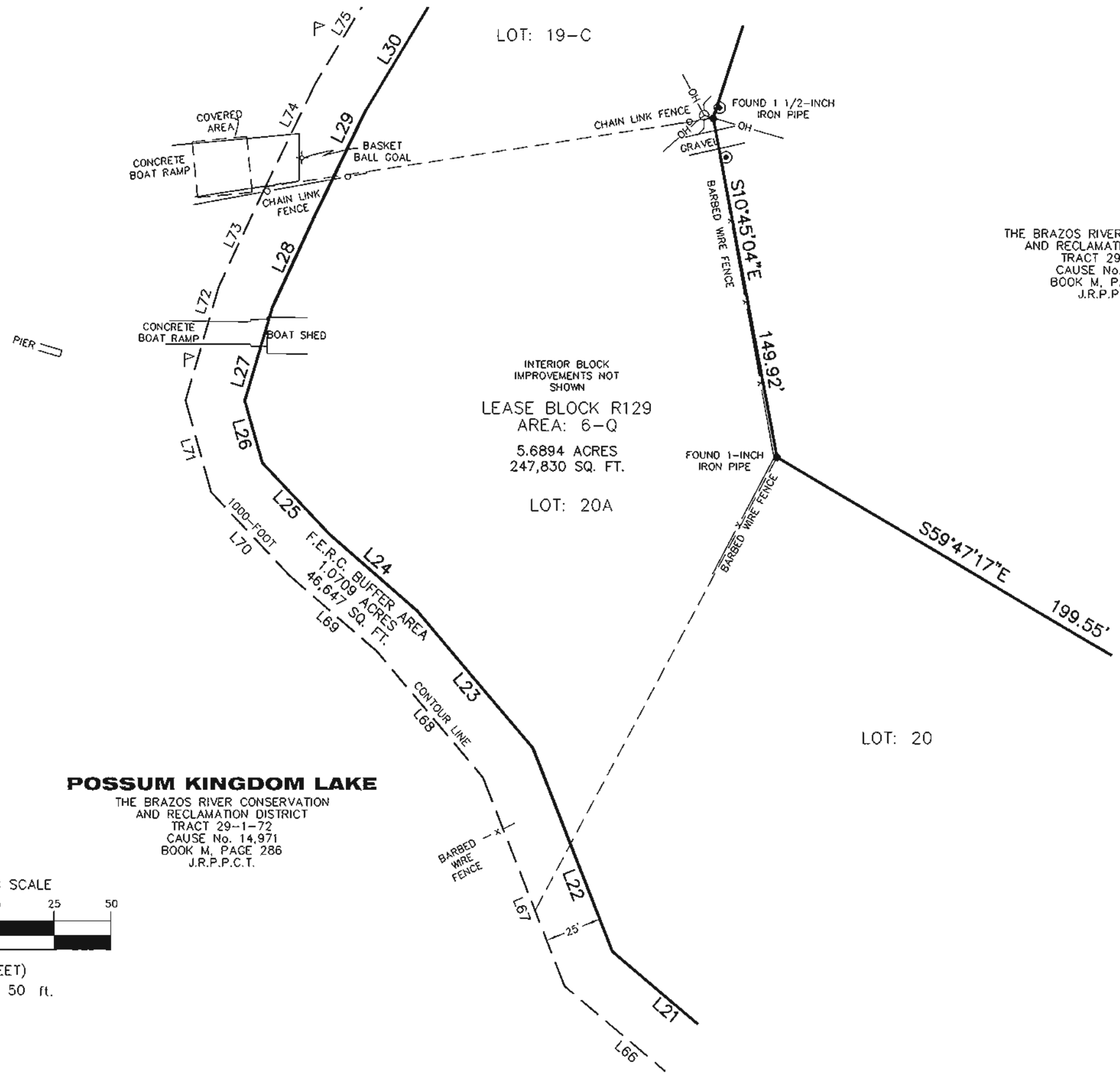
- 1) BEARINGS AND COORDINATES SHOWN HEREON ARE BASED ON THE NORTH AMERICAN DATUM OF 1983, TEXAS COORDINATE SYSTEM, NORTH CENTRAL ZONE (4202).
- 2) 1,000-FOOT CONTOUR ELEVATION OF POSSUM KINGDOM LAKE IS DETERMINED BASED ON MEASUREMENTS FROM THE TOP OF THE EXISTING SPILLWAY CREST GATES AT THE MORRIS SHEPPARD DAM BEING AT ELEVATION 1,000- FEET ABOVE MEAN SEA LEVEL AS NOTED IN FEDERAL POWER COMMISSION REPORT PROJECT NO. 1490 - TEXAS ON JUNE 2, 1938.
- 3) SET = 5/8" IRON ROD W/CAP STAMPED "AECOM" SET; D.R.P.P.C.T.= DEED RECORDS, PALO PINTO COUNTY, TEXAS; P.R.P.P.C.T.= PLAT RECORDS, PALO PINTO COUNTY, TEXAS; F.E.R.C.= FEDERAL ENERGY REGULATORY COMMISSION; J.R.P.P.C.T.= JUDGEMENT RECORDS, PALO PINTO COUNTY, TEXAS.
- 4) METES AND BOUNDS DESCRIPTIONS TO ACCOMPANY THIS SURVEY.
- 5) LOCATION OF ROAD PROVIDED BY LINK FIELD SERVICES, DATED JANUARY 15, 2010, AS SHOWN SHADED HEREON.

STANDARD LAND SURVEY
OF
6.7603 ACRES
SITUATED IN TRACT 29-1-72
AREA 6-Q, LOTS 19-A, 19-B, 19-C, 20-A,
20, 21 & 22-N & 22-S
POSSUM KINGDOM LAKE
S.P. RR CO. SURVEY, ABSTRACT 420
PALO PINTO COUNTY, TEXAS

AECOM

AECOM USA GROUP, INC.
1200 SUMMIT AVENUE, SUITE 600
FORT WORTH, TEXAS 76102
WWW.AECOM.COM
817.698.6770

S.P. RR CO. SURVEY, ABSTRACT 420



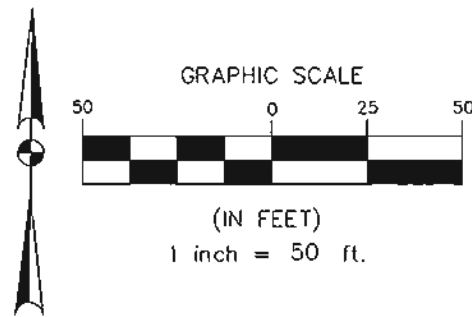
THE BRAZOS RIVER CONSERVATION
AND RECLAMATION DISTRICT
TRACT 29-1-72
CAUSE No. 14,971
BOOK M, PAGE 286
J.R.P.P.C.T.

NAVAJO TRAIL
SEE NOTE 5

INTERIOR BLOCK
IMPROVEMENTS NOT
SHOWN
LEASE BLOCK R129
AREA: 6-Q
5.6894 ACRES
247,830 SQ. FT.
LOT: 20A

- LEGEND
- = LEASE CORNER MARKER
"AS NOTED"
 - ⊙ = WATER METER
 - △ = FLAG POLE
 - OH = OVERHEAD LINES
 - ⊕ = POWER POLE

POSSUM KINGDOM LAKE
THE BRAZOS RIVER CONSERVATION
AND RECLAMATION DISTRICT
TRACT 29-1-72
CAUSE No. 14,971
BOOK M, PAGE 286
J.R.P.P.C.T.

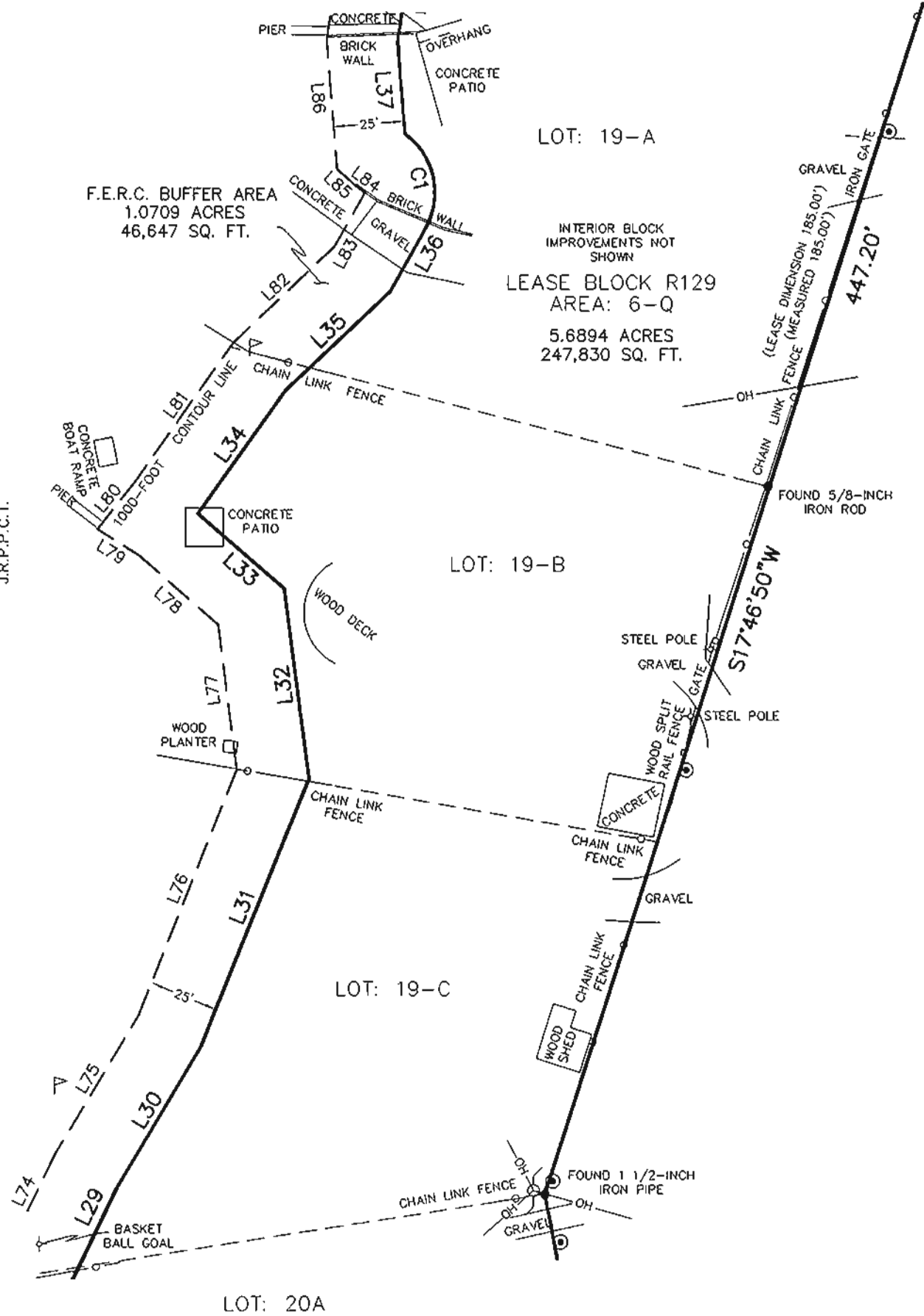


STANDARD LAND SURVEY
OF
6.7603 ACRES
SITUATED IN TRACT 29-1-72
AREA 6-Q, LOTS 19-A, 19-B, 19-C, 20-A,
20, 21 & 22-N & 22-S
POSSUM KINGDOM LAKE
S.P. RR CO. SURVEY, ABSTRACT 420
PALO PINTO COUNTY, TEXAS

AECOM	AECOM USA GROUP, INC. 1200 SUMMIT AVENUE, SUITE 600 FORT WORTH, TEXAS 76102 WWW.AECOM.COM 817.698.6770	
	Date: 01/07/10	Project No. 60052528.103

S.P. RR CO. SURVEY, ABSTRACT 420

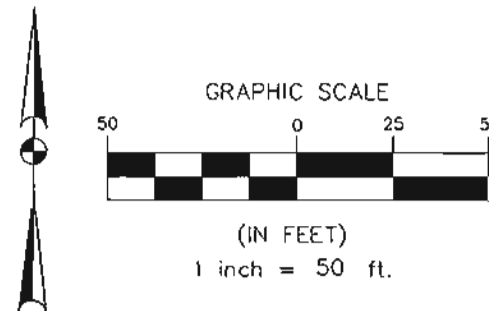
POSSUM KINGDOM LAKE
THE BRAZOS RIVER CONSERVATION
AND RECLAMATION DISTRICT
TRACT 29-1-72
CAUSE No. 14,971
BOOK M, PAGE 286
J.R.P.P.C.T.



THE BRAZOS RIVER CONSERVATION
AND RECLAMATION DISTRICT
TRACT 29-1-72
CAUSE No. 14,971
BOOK M, PAGE 286
J.R.P.P.C.T.

- LEGEND**
- = LEASE CORNER MARKER
"AS NOTED"
 - ⊙ = WATER METER
 - ▽ = FLAG POLE
 - OH = OVERHEAD LINES
 - = POWER POLE

STANDARD LAND SURVEY
OF
6.7603 ACRES
SITUATED IN TRACT 29-1-72
AREA 6-Q, LOTS 19-A, 19-B, 19-C, 20-A,
20, 21 & 22-N & 22-S
POSSUM KINGDOM LAKE
S.P. RR CO. SURVEY, ABSTRACT 420
PALO PINTO COUNTY, TEXAS



SHEET 4 OF 5

AECOM	AECOM USA GROUP, INC. 1200 SUMMIT AVENUE, SUITE 600 FORT WORTH, TEXAS 76102 WWW.AECOM.COM 817.698.6770	
	Date: 01/07/10	Project No. 60052528.103

S:\Source\Projects\60052528\3.0 Ref Docs\Drafting\Blocks\R129\60052528 R129By.dwg 2/11/2010 9:34:19 AM CST

POSSUM KINGDOM LAKE

S.P. RR CO. SURVEY, ABSTRACT 420

THE BRAZOS RIVER CONSERVATION
AND RECLAMATION DISTRICT
TRACT 29-1-72
CAUSE No. 14,971
BOOK M, PAGE 286
J.R.P.P.C.T.

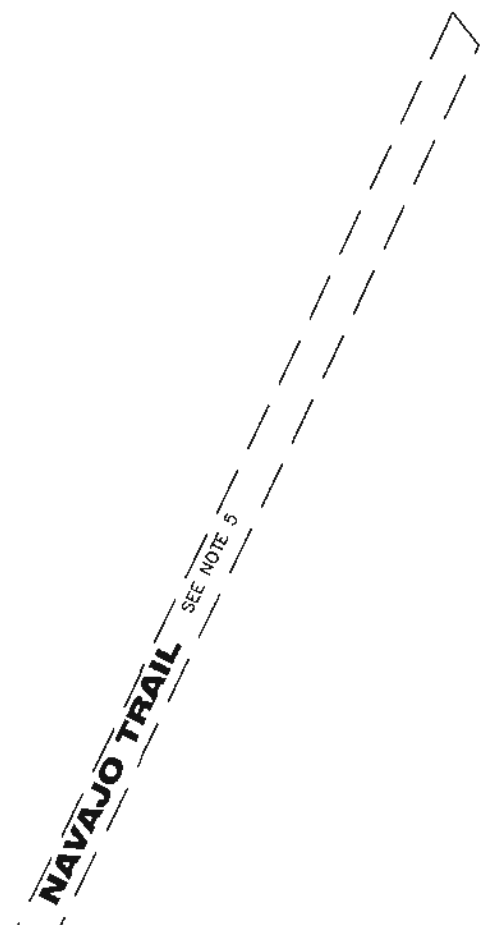
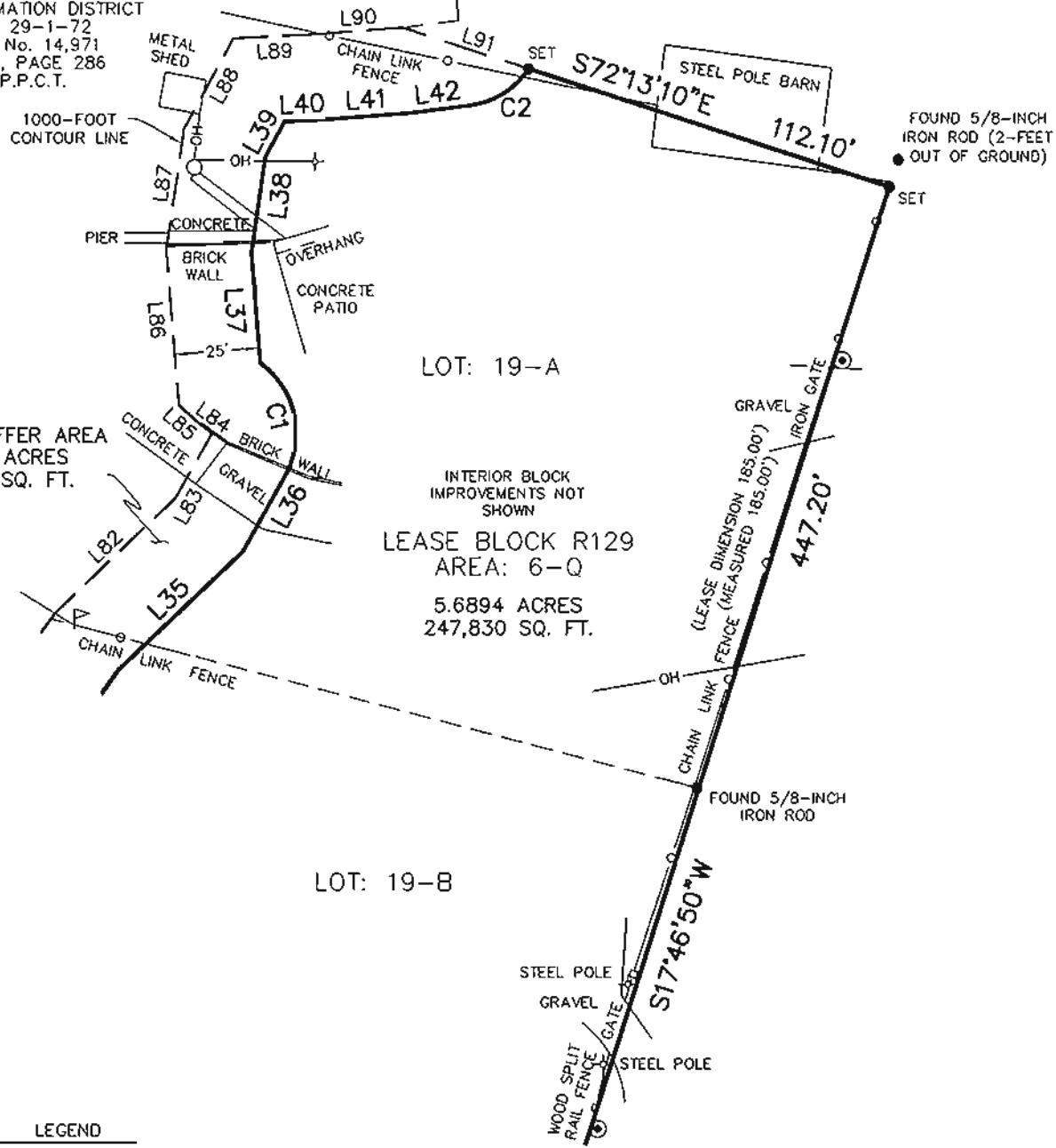
F.E.R.C. BUFFER AREA
1.0709 ACRES
46,647 SQ. FT.

LOT: 19-A

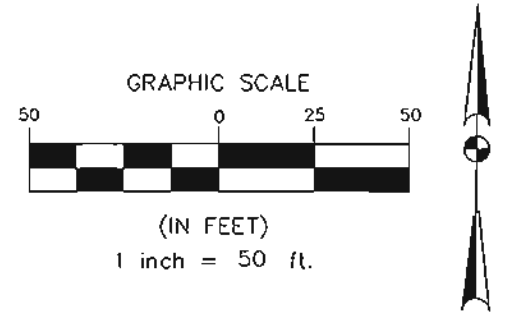
LEASE BLOCK R129
AREA: 6-Q
5.6894 ACRES
247,830 SQ. FT.

LOT: 19-B

THE BRAZOS RIVER CONSERVATION
AND RECLAMATION DISTRICT
TRACT 29-1-72
CAUSE No. 14,971
BOOK M, PAGE 286
J.R.P.P.C.T.



- LEGEND**
- = LEASE CORNER MARKER "AS NOTED"
 - ⊙ = WATER METER
 - ⊠ = FLAG POLE
 - OH = OVERHEAD LINES
 - ⊕ = POWER POLE



STANDARD LAND SURVEY
OF
6.7603 ACRES
SITUATED IN TRACT 29-1-72
AREA 6-Q, LOTS 19-A, 19-B, 19-C, 20-A,
20, 21 & 22-N & 22-S
POSSUM KINGDOM LAKE
S.P. RR CO. SURVEY, ABSTRACT 420
PALO PINTO COUNTY, TEXAS

AECOM	AECOM USA GROUP, INC. 1200 SUMMIT AVENUE, SUITE 600 FORT WORTH, TEXAS 76102 WWW.AECOM.COM 817.698.6770	
	Date: 01/07/10	Project No. 60052528.103

NO PART OR PARTS OF THIS DRAWING MAY BE REPRODUCED OR TRANSMITTED IN ANY WAY OR FORM (ELECTRONIC, MECHANICAL, PHOTOCOPYING, OR OTHERWISE) WITHOUT THE EXPRESS WRITTEN PERMISSION OF AECOM

S:\Survey\Projects\60052528\3.0 Ref Docs\Drafting\Blocks\R129\60052528 R129By.dwg 2/11/2010 9:34:19 AM CST