

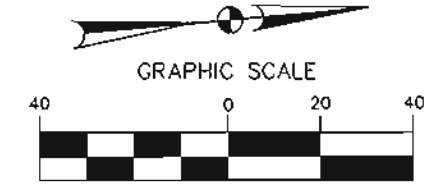
VICINITY MAP  
NOT TO SCALE

CURVE TABLE					
CURVE	LENGTH	DELTA	RADIUS	CHORD BEARING	CHORD
C1	47.92'	109°49'40"	25.00'	N28°06'31"W	40.91'

S.P. RR Co. SURVEY  
ABSTRACT 420

THE BRAZOS RIVER CONSERVATION  
AND RECLAMATION DISTRICT  
TRACT 29-1-72  
CAUSE No. 14,971  
BOOK M, PAGE 286  
J.R.P.P.C.T.

JOE RAMSEY, W. RALPH  
THOMAS AND JEFF DAVIS  
VOLUME 891, PAGE 808  
D.R.P.P.C.T.



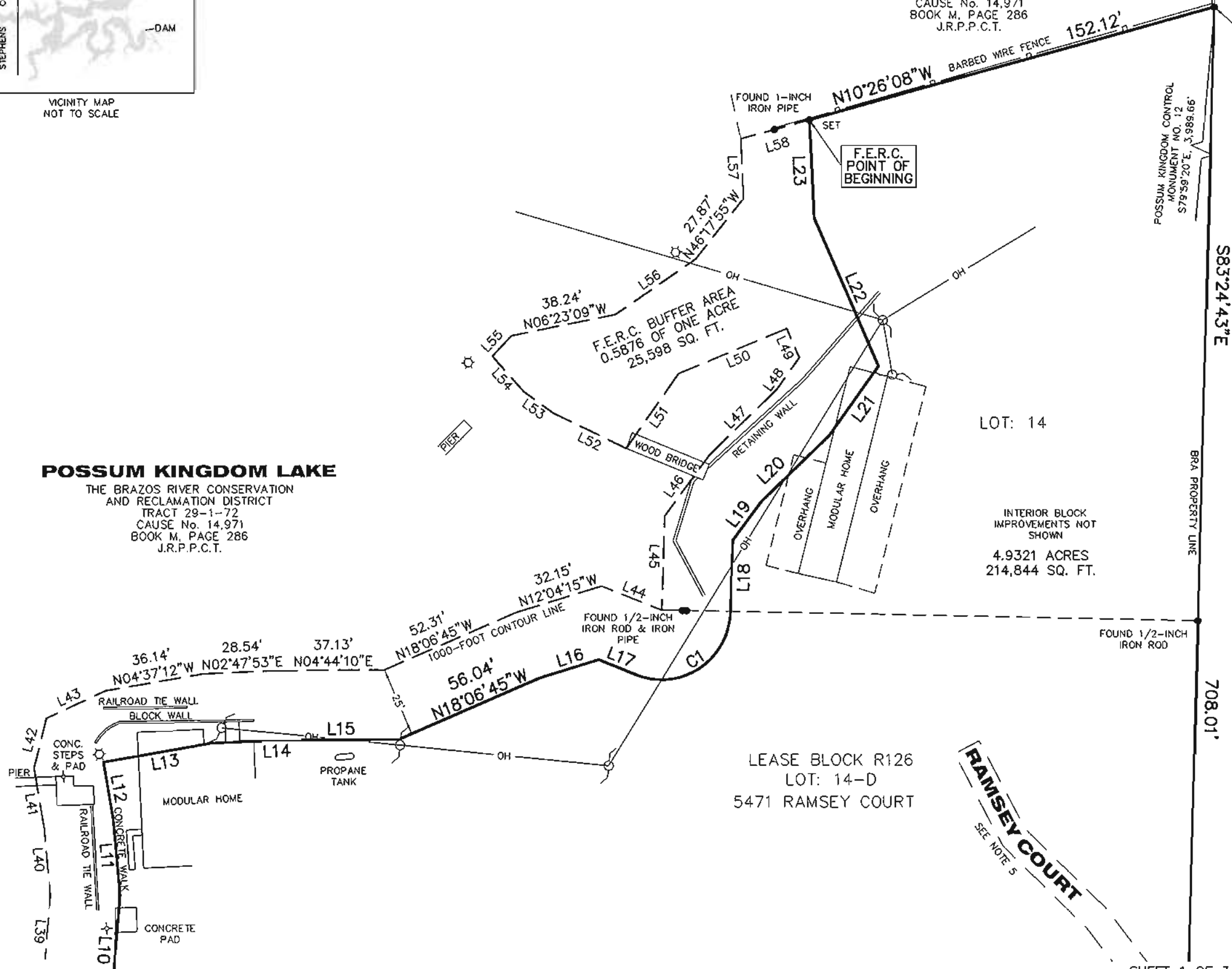
(IN FEET)  
1 inch = 40 ft.

ACREAGE TABLE	
LEASE BLOCK:	4.9321 ACRES
F.E.R.C. BUFFER AREA:	0.5876 OF ONE ACRE
SURVEY BLOCK:	5.5197 ACRES TOTAL

- LEGEND
- = LEASE CORNER MARKER  
"AS NOTED"
  - OH = OVERHEAD LINES
  - = POWER POLE
  - ☆ = LIGHT POLE

**POSSUM KINGDOM LAKE**

THE BRAZOS RIVER CONSERVATION  
AND RECLAMATION DISTRICT  
TRACT 29-1-72  
CAUSE No. 14,971  
BOOK M, PAGE 286  
J.R.P.P.C.T.



CLUB VISTA PROPERTIES, LLC  
VOLUME 1400, PAGE 156  
D.R.P.P.C.T.

STANDARD LAND SURVEY  
OF  
5.5197 ACRES  
SITUATED IN TRACT 29-1-72  
AREA 6-Q, LOTS 14, 14-A, 14-B,  
14-C & 14-D  
POSSUM KINGDOM LAKE  
S.P. RR CO. SURVEY, ABSTRACT 420  
PALO PINTO COUNTY, TEXAS

LEASE BLOCK R126  
LOT: 14-D  
5471 RAMSEY COURT

**RAMSEY COURT**  
SEE NOTE 5

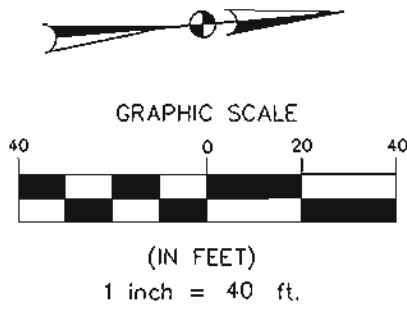
**AECOM**

AECOM USA GROUP, INC.  
1200 SUMMIT AVENUE, SUITE 600  
FORT WORTH, TEXAS 76102  
WWW.AECOM.COM  
817.698.6770

Date: 12/24/09 Project No. 60052528.103 60052528 R126R.dwg

S.P. RR Co. SURVEY  
ABSTRACT 420

LOT: 14



**POSSUM KINGDOM LAKE**

THE BRAZOS RIVER CONSERVATION  
AND RECLAMATION DISTRICT  
TRACT 29-1-72  
CAUSE No. 14,971  
BOOK M, PAGE 286  
J.R.P.C.T.

F.E.R.C. BUFFER AREA  
0.5876 OF ONE ACRE  
25,598 SQ. FT.

5473 RAMSEY CT.  
LOT: 14-C  
INTERIOR BLOCK  
IMPROVEMENTS NOT  
SHOWN  
4.9321 ACRES  
214,844 SQ. FT.

LEASE BLOCK R126  
LOT: 14-B

LOT: 14-A

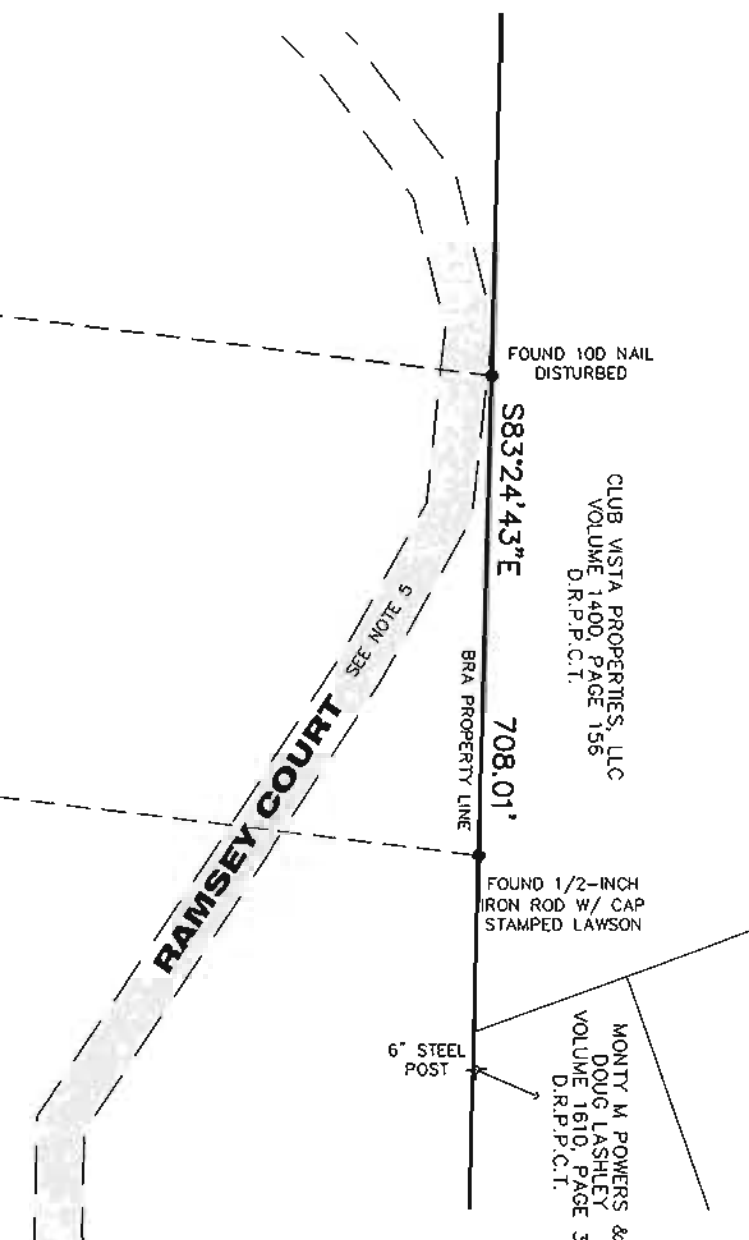
STANDARD LAND SURVEY  
OF  
5.5197 ACRES  
SITUATED IN TRACT 29-1-72  
AREA 6-Q, LOTS 14, 14-A, 14-B,  
14-C & 14-D  
POSSUM KINGDOM LAKE  
S.P. RR CO. SURVEY, ABSTRACT 420  
PALO PINTO COUNTY, TEXAS

LINE	BEARING	DISTANCE
L1	N17°12'00"W	30.75'
L2	N33°19'25"W	36.99'
L3	N64°13'23"W	56.06'
L4	N85°34'47"W	40.96'
L5	S69°48'22"W	21.06'
L6	S87°29'17"W	30.78'
L7	S78°33'21"W	13.31'
L8	N86°22'59"W	15.86'
L9	N72°56'53"W	12.79'
L10	N80°10'17"W	32.38'
L11	S89°57'27"W	27.42'
L12	S85°19'52"W	20.72'
L13	N04°37'12"W	39.58'
L14	N02°47'53"E	26.49'
L15	N04°44'10"E	41.76'
L16	N12°04'15"W	22.01'
L17	N26°48'19"E	14.53'
L18	N83°01'21"W	26.02'
L19	N48°14'18"W	17.48'
L20	N38°55'05"W	33.88'
L21	N49°15'34"W	30.61'
L22	S71°22'12"W	58.00'
L23	N87°39'04"W	35.37'
L24	N14°42'33"W	16.90'
L25	N69°54'48"E	23.20'
L26	N47°01'14"E	14.20'
L27	N01°31'06"E	10.00'
L28	N17°12'00"W	20.41'
L29	N33°19'25"W	26.54'
L30	N64°13'23"W	44.44'

LINE	BEARING	DISTANCE
L31	N85°34'47"W	30.79'
L32	S69°48'22"W	19.49'
L33	S87°29'17"W	32.72'
L34	S78°33'21"W	14.66'
L35	N86°22'59"W	22.11'
L36	N72°56'53"W	18.93'
L37	N58°20'45"W	12.97'
L38	N50°59'09"W	29.06'
L39	N80°10'17"W	23.71'
L40	S89°57'27"W	24.25'
L41	S85°19'52"W	21.71'
L42	N71°05'17"W	18.38'
L43	N19°49'18"W	23.54'
L44	N26°48'19"E	23.36'
L45	N83°01'21"W	33.85'
L46	N48°14'18"W	27.35'

LINE	BEARING	DISTANCE
L47	N38°55'05"W	33.66'
L48	N49°15'34"W	14.10'
L49	S71°22'12"W	11.33'
L50	S17°20'50"E	42.39'
L51	S49°43'04"E	32.74'
L52	S30°40'23"W	29.20'
L53	S40°45'46"W	13.12'
L54	S53°00'35"W	17.04'
L55	N41°37'29"W	10.14'
L56	N29°27'44"W	35.37'
L57	N87°39'04"W	21.43'
L58	N10°26'08"W	25.64'

- LEGEND
- = LEASE CORNER MARKER "AS NOTED"
  - OH = OVERHEAD LINES
  - = POWER POLE
  - ☆ = LIGHT POLE



<b>AECOM</b>	AECOM USA GROUP, INC. 1200 SUMMIT AVENUE, SUITE 600 FORT WORTH, TEXAS 76102 WWW.AECOM.COM 817.698.6770	
	Date: 12/24/09	Project No. 60052528.103

