

VICINITY MAP
NOT TO SCALE

LINE	BEARING	DISTANCE
L1	S00°03'50"W	50.28'
L2	NOT USED	
L3	N57°41'33"E	24.25'
L4	S31°00'11"E	24.33'
L5	S72°47'45"E	61.49'
L6	S16°17'17"E	17.11'
L7	S29°47'28"E	40.94'
L8	S00°06'59"E	54.23'
L9	S05°44'45"E	43.85'
L10	S20°00'22"E	26.43'
L11	S00°52'07"W	47.93'
L12	S07°08'28"E	58.94'
L13	S21°44'35"E	110.10'
L14	S00°28'05"E	71.97'
L15	S13°37'11"E	52.94'
L16	S13°25'45"E	46.63'
L17	S29°16'04"E	19.34'
L18	S41°05'35"E	40.97'
L19	S23°31'17"E	36.25'
L20	S06°34'06"E	41.55'
L21	S13°31'31"E	36.14'
L22	S38°11'45"E	14.88'
L23	S05°34'04"E	31.34'
L24	S23°47'32"E	10.66'
L25	S01°27'01"E	27.31'
L26	S05°25'49"W	40.00'
L27	S11°19'16"E	23.91'
L28	S33°42'20"W	16.84'

LINE	BEARING	DISTANCE
L29	S39°53'14"W	18.63'
L30	S47°44'18"W	25.52'
L31	S69°18'41"W	6.59'
L32	S63°32'39"W	14.16'
L33	S58°13'31"W	9.39'
L34	S71°56'19"W	18.97'
L35	S39°44'35"W	38.23'
L36	S02°45'14"W	18.51'
L37	S12°58'39"W	16.21'
L38	S05°56'42"W	23.22'
L39	S34°53'19"W	27.93'
L40	S57°35'15"W	43.95'
L41	S62°15'58"W	35.67'
L42	S66°38'52"W	31.39'
L43	S83°20'09"W	34.64'
L44	S66°04'49"W	44.49'
L45	S49°26'30"W	22.26'
L46	S65°47'53"W	14.93'
L47	S72°34'40"W	29.34'
L48	S73°07'17"W	34.98'
L49	S84°56'48"W	41.67'
L50	S55°11'09"W	35.52'
L51	N89°47'50"W	23.08'
L52	N85°57'09"W	32.32'
L53	S70°41'27"W	26.55'
L54	S67°14'21"W	23.46'
L55	S72°56'07"W	15.38'
L56	S02°11'58"W	12.66'
L57	S86°48'12"W	28.29'
L58	S17°31'10"W	11.84'
L59	S24°37'05"W	7.21'
L60	S84°26'05"W	8.37'
L61	N08°38'05"E	11.51'
L62	N56°57'59"W	30.49'
L63	N83°00'39"W	38.92'
L64	S89°14'18"W	60.30'
L65	S84°24'55"W	30.19'
L66	S69°22'22"W	20.44'
L67	S36°12'59"W	26.69'
L68	S06°14'08"W	7.69'
L69	N84°59'13"W	33.09'
L70	N03°55'45"W	6.96'
L71	N85°46'31"W	33.94'
L72	N82°48'07"W	54.77'

LINE	BEARING	DISTANCE
L73	N85°43'11"W	58.28'
L74	N61°16'31"W	26.07'
L75	N77°23'48"W	27.43'
L76	S81°28'51"W	15.44'
L77	N85°41'12"W	20.61'
L78	N68°47'52"W	11.45'
L79	N80°45'48"W	35.63'
L80	S84°06'46"W	31.10'
L81	N86°41'25"W	43.00'
L82	N69°58'50"W	61.54'
L83	N79°24'00"W	66.19'
L84	N85°27'13"W	32.82'
L85	S83°50'28"W	35.38'
L86	N86°56'44"W	21.80'
L87	S44°37'32"W	9.52'
L88	N84°34'54"W	56.59'
L89	N36°26'19"W	4.89'
L90	N76°31'49"W	28.58'
L91	N87°32'14"W	22.03'
L92	N79°41'06"W	13.40'
L93	N39°05'42"W	9.96'
L94	N74°15'08"W	39.48'
L95	S79°42'00"W	15.87'
L96	S73°16'11"W	8.40'
L97	N61°55'58"W	41.48'
L98	N79°42'36"W	30.50'
L99	N00°32'31"E	2.64'
L100	N47°18'09"W	42.20'
L101	N57°17'16"W	47.10'
L102	N72°13'54"W	22.90'
L103	N86°49'31"W	48.75'
L104	S77°56'10"W	11.74'
L105	S39°00'50"W	8.32'
L106	N77°37'08"W	37.60'
L107	N89°45'06"W	19.22'
L108	N60°20'51"W	17.84'
L109	N76°58'23"W	26.76'
L110	N70°29'17"W	51.07'
L111	N52°04'54"W	33.11'
L112	N71°25'58"W	30.62'
L113	N80°12'11"W	24.58'
L114	N87°14'30"W	23.50'
L115	S85°53'43"W	28.06'
L116	N86°50'52"W	12.98'

LINE	BEARING	DISTANCE
L117	N80°13'47"W	24.41'
L118	S89°56'57"W	11.61'
L119	S82°28'20"W	7.11'
L120	S79°57'37"W	46.77'
L121	N85°05'04"W	15.82'
L122	N50°24'55"W	13.45'
L123	N82°26'16"W	11.35'
L124	N67°39'00"W	12.54'
L125	N63°14'04"W	22.84'
L126	N75°03'41"W	24.50'
L127	N67°23'39"W	21.67'
L128	N62°34'23"W	9.39'
L129	N77°59'43"W	31.43'
L130	N66°37'22"W	9.47'
L131	N70°56'31"W	5.62'
L132	N85°57'02"W	25.78'
L133	S85°07'32"W	6.32'
L134	N89°08'31"W	41.21'
L135	S58°25'07"W	7.00'
L136	N82°02'10"W	11.53'
L137	S82°25'37"W	26.94'
L138	N78°47'50"W	23.16'
L139	N64°44'16"W	4.63'
L140	N83°28'41"W	14.94'
L141	S88°15'02"W	10.39'
L142	N85°05'10"W	34.80'
L143	N86°02'33"W	21.22'
L144	N66°27'14"W	19.89'
L145	N76°02'49"W	31.32'
L146	N69°44'35"W	36.57'
L147	N77°42'28"W	27.25'
L148	N52°11'48"W	8.31'
L149	N75°08'57"W	30.97'
L150	N64°20'05"W	15.31'
L151	N43°34'47"W	22.95'
L152	N36°32'10"W	32.99'
L153	N45°35'45"W	31.44'
L154	N29°35'31"W	21.75'
L155	N27°40'48"W	34.81'
L156	N15°46'59"W	41.38'
L157	N29°27'18"W	43.61'
L158	N43°44'53"W	35.27'
L159	S77°28'34"W	24.05'
L160	N00°04'02"E	58.51'

LINE	BEARING	DISTANCE
L161	N67°41'33"E	27.67'
L162	S03°07'14"E	5.69'
L163	S31°00'11"E	19.94'
L164	N66°01'38"E	18.12'
L165	S72°47'45"E	74.89'
L166	S16°17'17"E	27.59'
L167	S29°47'28"E	44.60'
L168	S00°06'59"E	59.62'
L169	S05°44'45"E	39.49'
L170	S20°00'22"E	27.91'
L171	S00°52'07"W	50.79'
L172	S07°08'28"E	53.62'
L173	S21°36'46"E	112.37'
L174	S00°28'05"E	73.33'
L175	S13°37'11"E	50.14'
L176	S13°25'45"E	43.15'
L177	S29°16'04"E	13.27'
L178	S41°05'35"E	42.25'
L179	S23°31'17"E	43.84'
L180	S06°34'06"E	43.76'
L181	S13°31'31"E	29.15'
L182	S38°11'45"E	16.73'
L183	S05°34'04"E	34.64'
L184	S23°47'32"E	11.59'
L185	S01°27'01"E	33.75'
L186	S05°25'49"W	37.82'
L187	S11°19'16"E	28.45'
L188	S20°36'04"W	6.70'
L189	S33°42'20"W	23.54'
L190	S39°53'14"W	21.58'
L191	S47°14'07"W	25.74'
L192	S52°21'42"W	7.35'
L193	S69°18'41"W	9.05'
L194	S63°32'39"W	11.74'
L195	S58°13'31"W	17.64'
L196	S87°02'55"W	5.83'
L197	S71°56'19"E	2.92'
L198	S39°44'35"W	22.66'
L199	S02°45'14"W	12.39'
L200	S59°52'49"E	5.19'
L201	S09°39'00"W	12.95'
L202	S79°44'49"W	6.22'
L203	S05°56'42"W	19.59'
L204	S38°16'12"E	23.90'

LINE	BEARING	DISTANCE
L205	N67°08'47"W	48.01'
L206	S34°53'19"W	33.58'
L207	S57°35'15"W	49.99'
L208	S62°15'58"W	37.64'
L209	S66°38'09"W	36.01'
L210	S83°20'09"W	34.52'
L211	S66°04'49"W	37.04'
L212	S49°26'30"W	22.20'
L213	S65°47'53"W	20.00'
L214	S72°34'40"W	30.94'
L215	S73°07'17"W	37.69'
L216	S84°56'48"W	37.62'
L217	S55°11'09"W	36.77'
L218	N89°47'50"W	31.80'
L219	N85°57'09"W	27.99'
L220	S70°41'27"W	20.62'
L221	S67°14'21"W	23.95'
L222	S72°56'07"W	16.63'
L223	S02°11'58"W	35.41'
L224	S86°48'12"W	51.04'
L225	S17°31'10"W	13.39'
L226	S24°37'05"W	23.14'
L227	S84°26'05"W	30.09'
L228	N89°35'12"W	19.78'
L229	N09°32'06"W	14.20'
L230	N08°38'05"E	26.82'
L231	N56°57'59"W	24.70'
L232	S87°49'54"W	27.75'
L233	N35°31'45"W	5.99'
L234	S89°14'18"W	57.55'
L235	S84°24'55"W	25.84'
L236	S69°22'22"W	9.69'
L237	S36°12'59"W	12.55'
L238	S06°14'08"W	25.47'
L239	N84°59'13"W	80.34'
L240	N00°01'46"W	20.37'

LINE	BEARING	DISTANCE
L241	N03°55'45"W	7.80'
L242	N85°46'31"W	34.59'
L243	N82°48'07"W	54.78'
L244	N85°43'11"W	51.24'
L245	S30°13'12"W	11.85'
L246	S16°07'42"W	11.93'
L247	N76°59'59"W	25.72'
L248	N80°28'22"W	12.47'
L249	N73°26'41"W	17.50'
L250	N06°40'20"E	8.81'
L251	N73°08'42"E	10.28'
L252	S80°12'56"E	20.15'
L253	N68°21'04"E	14.68'
L254	N61°16'31"W	19.68'
L255	N77°23'48"W	19.23'
L256	S81°28'51"W	13.59'
L257	N85°41'12"W	17.97'
L258	N68°47'52"W	21.70'
L259	N80°45'48"W	29.69'
L260	S84°06'46"W	29.79'
L261	N86°41'25"W	48.68'
L262	N69°58'50"W	43.15'
L263	N79°24'00"W	62.80'
L264	N85°27'13"W	29.16'
L265	S83°50'28"W	35.06'
L266	N86°56'44"W	12.57'
L267	S44°37'32"W	10.15'
L268	N84°34'54"W	79.63'
L269	N36°26'19"W	6.93'
L270	N76°31'49"W	17.05'
L271	N87°32'14"W	21.33'
L272	N79°41'06"W	24.36'
L273	N39°05'42"W	11.29'
L274	N74°15'08"W	25.78'
L275	S79°42'00"W	8.69'
L276	N61°55'58"W	47.87'

ACREAGE TABLE
LEASE BLOCK: 27.7350 ACRES
E.F.R.C. BUFFER AREA: 2.8290 ACRES
SURVEY BLOCK: 30.5640 ACRES TOTAL

SURVEYORS CERTIFICATE
TO: BRAZOS RIVER AUTHORITY, PATTERSON PK LAND PARTNERSHIP, LTD., AND HERITAGE TITLE COMPANY OF AUSTIN, INC.
I, JAMES T. MULLER, A REGISTERED PROFESSIONAL LAND SURVEYOR IN THE STATE OF TEXAS, REGISTRATION NUMBER 4522, HEREBY STATE THAT A SURVEY OF THE REAL PROPERTY DESCRIBED IN SEPARATE LEGAL DESCRIPTION AS NOTED HEREON, WAS ACTUALLY MADE UPON THE GROUND UNDER MY DIRECTION AND SUPERVISION, AND THAT TO THE BEST OF MY PROFESSIONAL KNOWLEDGE AND BELIEF, THE INFORMATION SHOWN HEREON IS CORRECT AS DETERMINED BY SAID SURVEY.
THIS SURVEY SUBSTANTIALLY COMPLIES WITH THE CURRENT TEXAS SOCIETY OF PROFESSIONAL SURVEYORS STANDARDS AND SPECIFICATIONS FOR A CATEGORY 1B, CONDITION II SURVEY.

JAMES T. MULLER
REGISTERED PROFESSIONAL LAND SURVEYOR
TEXAS REGISTRATION NO. 4522



DATE: MAY 21, 2010

REVISED: 05/21/10
REVISED: 03/22/10

SHEET 1 OF 13

ACCOM USA GROUP, INC.
1200 SUMMIT AVENUE, SUITE 600
FORT WORTH, TEXAS 76102
WWW.ACCOM.COM
817.698.6770

Date: 01/21/10 Project No. 60102581.02

LINE TABLE		LINE TABLE
LINE	BEARING	DISTANCE
L277	N79.42.36"W	38.65'
L278	N89.25.44"W	8.88'
L279	N00.32.31"E	14.14'
L280	N47.18.09"W	28.93'
L281	N57.17.16"W	41.63'
L282	N27.13.54"W	15.98'
L283	N88.49.31"W	42.21'
L284	S39.00.50"W	17.56'
L285	N71.20.01"W	21.59'
L286	N77.37.08"W	27.73'
L287	N89.45.06"W	23.12'
L288	N60.20.51"W	20.75'
L289	N76.58.23"W	24.53'
L290	N70.29.17"W	42.14'
L291	S22.58.30"W	29.58'
L292	N78.21.57"W	11.83'
L293	N05.44.36"W	18.74'
L294	N04.06.29"E	18.92'
L295	N52.04.54"W	20.11'
L296	N71.25.58"W	24.44'
L297	N80.12.11"W	21.13'
L298	N87.14.30"W	20.46'
L299	S85.53.43"W	26.57'
L300	S03.44.42"W	5.32'
L301	N88.17.32"W	18.51'
L302	N86.26.03"W	11.85'
L303	N80.13.47"W	23.62'
L304	S89.56.57"W	7.83'
L305	S82.28.20"W	7.76'
L306	N87.35.10"W	6.54'
L307	S19.15.35"W	4.50'
L308	S79.57.37"W	61.55'
L309	N89.01.35"W	11.36'
L310	N81.40.59"W	17.11'

LINE TABLE		LINE TABLE
LINE	BEARING	DISTANCE
L311	N50.24.55"W	13.27'
L312	N82.26.16"W	7.42'
L313	N67.39.00"W	16.75'
L314	N60.34.30"W	8.70'
L315	N65.04.50"W	12.53'
L316	N75.03.41"W	23.50'
L317	N67.23.39"W	24.40'
L318	N62.34.23"W	10.45'
L319	N77.59.43"W	36.52'
L320	N66.37.22"W	23.29'
L321	N02.38.06"E	3.66'
L322	S72.47.49"W	13.49'
L323	N70.56.31"W	23.61'
L324	N17.16.09"W	4.88'
L325	N85.57.02"W	23.83'
L326	S85.07.32"W	5.62'
L327	N89.08.31"W	35.18'
L328	S58.25.07"W	8.72'
L329	N82.02.10"W	17.11'
L330	S82.25.37"W	27.66'
L331	N78.47.50"W	30.37'
L332	N64.44.16"W	3.59'
L333	N83.28.41"W	9.01'
L334	S88.15.02"W	10.04'
L335	N85.05.10"W	36.04'
L336	N86.02.33"W	25.33'
L337	N66.27.14"W	22.11'
L338	N76.02.49"W	30.60'
L339	N69.44.35"W	36.21'
L340	N77.42.28"W	31.17'
L341	N52.11.48"W	8.89'
L342	N75.08.57"W	28.26'
L343	N64.20.05"W	34.02'
L344	N02.50.32"E	13.28'

LINE TABLE		LINE TABLE
LINE	BEARING	DISTANCE
L345	N43.34.47"W	24.49'
L346	N36.32.10"W	32.54'
L347	N45.35.45"W	32.98'
L348	N29.35.31"W	25.68'
L349	N27.40.48"W	37.83'
L350	N15.46.59"W	40.99'
L351	N29.27.18"W	37.47'
L352	N43.45.53"W	18.06'
L353	S49.51.35"W	16.91'
L354	N71.31.07"W	2.39'
L355	N00.04.02"E	32.38'
L356	S89.56.10"E	42.96'

CURVE TABLE						
CURVE	LENGTH	DELTA	RADIUS	BEARING	CHORD	CHORD
C1	36.74'	84.12.42"	25.00'	S73.06.32"E	33.53'	33.53'
C2	28.09'	21.32.43"	74.69'	S77.30.42"W	27.92'	27.92'
C3	22.47'	34.08.21"	37.71'	S49.40.10"W	22.14'	22.14'
C4	30.86'	70.44.09"	25.00'	S37.34.02"W	28.94'	28.94'
C5	50.79'	69.17.02"	42.00'	S52.09.41"W	47.75'	47.75'
C6	28.62'	65.36.04"	25.00'	N24.09.57"W	27.09'	27.09'
C7	35.71'	81.50.47"	25.00'	N44.51.08"W	32.75'	32.75'
C8	14.07'	32.14.06"	25.00'	S69.46.40"W	13.88'	13.88'
C9	35.05'	64.55.03"	30.93'	S83.08.22"W	33.20'	33.20'
C10	30.45'	69.46.33"	25.00'	S82.32.20"W	28.60'	28.60'
C11	18.01'	24.19.28"	42.42'	S59.48.47"W	17.87'	17.87'
C12	35.66'	81.43.47"	25.00'	N77.09.57"W	32.71'	32.71'
C13	20.75'	47.33.45"	25.00'	N62.10.10"W	20.16'	20.16'
C14	16.83'	38.34.03"	25.00'	N24.17.46"W	16.51'	16.51'
C15	10.67'	82.10.48"	7.44'	N84.37.32"E	9.78'	9.78'
C16	19.12'	109.33.47"	10.00'	S81.40.59"E	16.34'	16.34'
C17	24.33'	48.22.27"	28.82'	S51.05.19"E	23.61'	23.61'
C18	22.54'	17.36.01"	73.39'	S74.44.01"E	22.45'	22.45'
C19	19.32'	162.47.19"	6.80'	S15.27.39"W	13.45'	13.45'
C20	29.93'	15.46.25"	108.73'	N75.15.29"W	29.84'	29.84'
C21	13.49'	33.31.17"	23.05'	N84.22.03"W	13.30'	13.30'

CURVE TABLE						
CURVE	LENGTH	DELTA	RADIUS	BEARING	CHORD	CHORD
C22	34.03'	39.14.00"	49.69'	S86.21.21"W	33.36'	33.36'
C23	7.94'	35.47.36"	12.71'	S48.50.33"W	7.81'	7.81'
C24	20.56'	69.17.02"	17.00'	S52.09.41"W	19.33'	19.33'
C25	17.53'	32.16.32"	31.12'	S73.16.11"W	17.30'	17.30'
C26	4.49'	36.12.58"	7.10'	N69.28.41"W	4.41'	4.41'
C27	5.59'	54.02.07"	5.93'	N78.23.15"W	5.39'	5.39'
C28	30.31'	25.45.14"	67.42'	S60.31.41"W	30.05'	30.05'
C29	8.88'	23.48.49"	21.36'	S85.18.42"W	8.82'	8.82'
C30	109.88'	02.13.44"	2824.79'	S75.51.17"E	109.87'	109.87'
C31	35.30'	00.21.02"	5769.58'	S74.54.56"E	35.30'	35.30'
C32	44.89'	24.29.34"	105.00'	S41.46.55"E	44.54'	44.54'
C33	146.64'	18.40.15"	450.00'	S44.41.34"E	145.99'	145.99'
C34	76.21'	54.34.43"	80.00'	S62.38.49"E	73.36'	73.36'
C35	157.36'	83.28.50"	108.00'	N30.59.51"E	143.80'	143.80'
C36	444.89'	17.18.44"	1472.39'	S86.45.31"E	443.20'	443.20'
C37	461.22'	80.56.29"	326.48'	N44.06.53"E	423.81'	423.81'

NOTES:

- 1) BEARINGS AND COORDINATES SHOWN HEREON ARE BASED ON THE NORTH AMERICAN DATUM OF 1983, TEXAS COORDINATE SYSTEM, NORTH CENTRAL ZONE (4202).
- 2) 1,000-FOOT CONTOUR ELEVATION OF POSSUM KINGDOM LAKE IS DETERMINED BASED ON MEASUREMENTS FROM THE TOP OF THE EXISTING SPILLWAY GREST GATES AT THE MORRIS SHEPPARD DAM BEING AT ELEVATION 1,000-FEET ABOVE MEAN SEA LEVEL AS NOTED IN FEDERAL POWER COMMISSION REPORT PROJECT NO. 1490 - TEXAS ON JUNE 2, 1938.
- 3) SET = 5/8" IRON ROD W/CAP STAMPED "AECOM" SET; D.R.P.C.T.= DEED RECORDS, PALO PINTO COUNTY, TEXAS; P.R.P.C.T.= PLAT RECORDS, PALO PINTO COUNTY, TEXAS; F.E.R.C.= FEDERAL ENERGY REGULATORY COMMISSION; J.R.P.C.T.= JUDGEMENT RECORDS, PALO PINTO COUNTY, TEXAS; LFS = 5/8" IRON ROD W/CAP STAMPED "LINKFIELD RPLS 5087" FOUND.
- 4) METES AND BOUNDS DESCRIPTIONS TO ACCOMPANY THIS SURVEY.
- 5) LOCATION, POSITION AND GEOMETRY OF ROAD RIGHTS-OF-WAY SHOWN AND DESCRIBED HEREON BASED ON SURVEYS PROVIDED BY LINK FIELD SERVICES, NO DEED OF RECORD HAS BEEN RECORDED AT THIS TIME FOR SAME UNLESS NOTED OTHERWISE.
- 6) RIGHT-OF-WAY FOR F.M. 1148 WAS DETERMINED USING TEXAS DEPARTMENT OF TRANSPORTATION RIGHT-OF-WAY PLANS FOR F.M. 1148, FROM: 4.3 MILES EAST OF STEPHENS COUNTY LINE EAST AND NORTH 3.3 MILES, TO: COUNTY ROAD INTERSECTION), OBTAINED FROM THE TEXAS DEPARTMENT OF TRANSPORTATION'S WEB SITE (WWW.DOT.STATE.TX.US), BEING THEIR CONTROL NO. 1525-2-2.
- 7) IMPROVEMENTS SHOWN HEREON TIED FEBRUARY 2010.

NO PART OF THIS DRAWING MAY BE REPRODUCED OR TRANSMITTED IN ANY WAY OR FROM (ELECTRONIC, MECHANICAL, PHOTOCOPIING, OR OTHERWISE) WITHOUT THE EXPRESS WRITTEN PERMISSION OF AECOM.

REVISED: 05/21/10
REVISED: 03/22/10

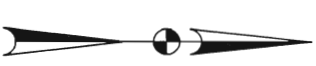
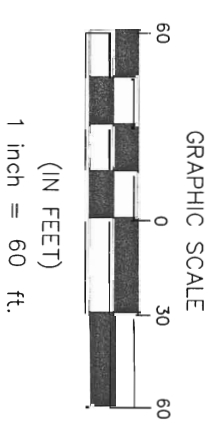
SHEET 2 OF 13

STANDARD LAND SURVEY
OF
30.5640 ACRES
SITUATED IN TRACT 27-2-29
AREA 6-0, LOTS 7 - 9, 12 - 16, 19, 21,
9-A, 10-E, 10-W, 11-E, 11-W, 14-A, 17-E,
17-W, 18-E, 18-W, 20-A & 20-B
POSSUM KINGDOM LAKE
W.D. NICKLAS SURVEY, ABSTRACT 1114
PALO PINTO COUNTY, TEXAS

AECOM
AECOM USA GROUP, INC.
1200 SUMMIT AVENUE, SUITE 600
FORT WORTH, TEXAS 76102
WWW.AECOM.COM
817.698.6770

Date: 01/21/10 Project No. 60102581.02 60052528 R118By.dwg

W.D. NICKLAS SURVEY, ABSTRACT 1114



- LEGEND
- = LEASE CORNER MARKER "AS NOTED"
 - OH = OVERHEAD LINES
 - ⊙ = WATER METER
 - P = FLAG POLE
 - = TELEPHONE PEDESTAL
 - = POWER POLE
 - ⌘ = WATER VALVE
 - ⊗ = IRRIGATION CONTROL VALVE
 - ⊕ = FIRE HYDRANT
 - ⊙ = POST
 - ⊠ = ELECTRIC PEDESTAL

F.M. 1148
 CALLED 80-FOOT WIDE RIGHT-OF-WAY
 NO DEED OF RECORD FOUND
 (SEE NOTE 6)

THE BRAZOS RIVER CONSERVATION
 AND RECLAMATION DISTRICT
 TRACT 27-2-29
 VOLUME 184, PAGE 513
 D.R.P.P.C.T.

POINT OF BEGINNING
 FOUND 1000 NAIL
 N 7,009,016.34
 E 1,963,792.99

POINT OF BEGINNING
 F.E.R.C.
 SET MAG NAIL

POSSUM KINGDOM CONTROL
 MONUMENT NO. 14
 S88°13'16"W, 1,935.12'

LEASE BLOCK R118
 AREA: 6-0
 27,7350 ACRES
 1,208,139 SQ. FT.
 INTERIOR BLOCK
 IMPROVEMENTS NOT
 SHOWN

THE BRAZOS RIVER CONSERVATION
 AND RECLAMATION DISTRICT
 TRACT 27-2-29
 VOLUME 184, PAGE 513
 D.R.P.P.C.T.

SHEET 5

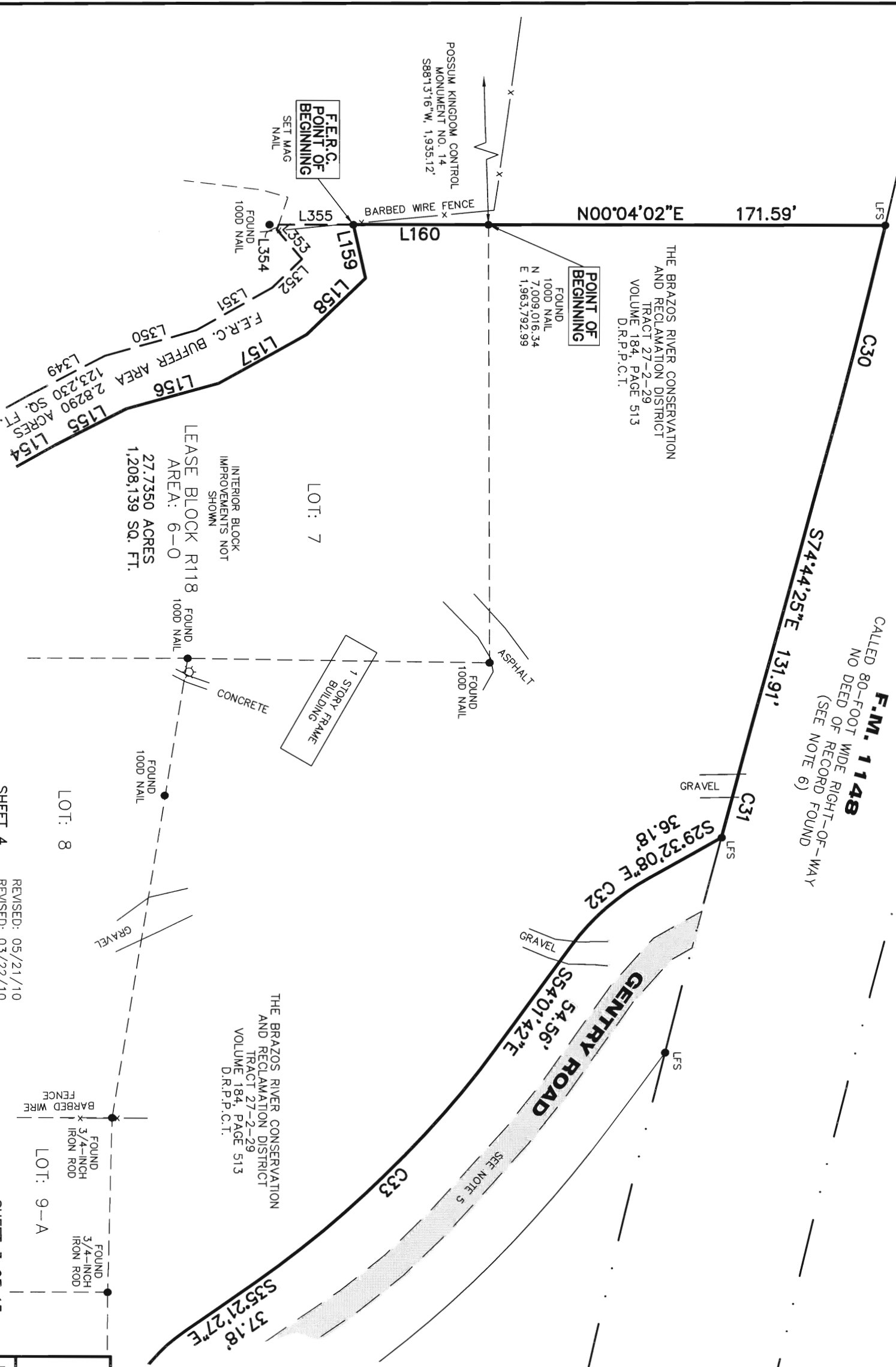
STANDARD LAND SURVEY
 OF
30.5640 ACRES
 SITUATED IN TRACT 27-2-29
 AREA 6-0, LOTS 7 - 9, 12 - 16, 19, 21,
 9-A, 10-E, 10-W, 11-E, 11-W, 14-A, 17-E,
 17-W, 18-E, 18-W, 20-A & 20-B
 POSSUM KINGDOM LAKE
 W.D. NICKLAS SURVEY, ABSTRACT 1114
 PALO PINTO COUNTY, TEXAS

AECOM
 AECOM USA GROUP, INC.
 1200 SUMMIT AVENUE, SUITE 600
 FORT WORTH, TEXAS 76102
 WWW.AECOM.COM
 817.698.6770

Date: 01/21/10 Project No. 60102581.02 60052528 R118By1.dwg

SHEET 4 REVISED: 05/21/10
 REVISED: 03/22/10

SHEET 3 OF 13



NO PART OF THIS DRAWING MAY BE REPRODUCED OR TRANSMITTED IN ANY WAY OR FORM (ELECTRONIC, MECHANICAL, PHOTOCOPYING, OR OTHERWISE) WITHOUT THE EXPRESS WRITTEN PERMISSION OF AECOM.

THE BRAZOS RIVER CONSERVATION
AND RECLAMATION DISTRICT
TRACT 27-2-29
VOLUME 184, PAGE 513
D.R.P.C.T.

SHEET 3

W.D. NICKLAS SURVEY, ABSTRACT 1114

POINT OF BEGINNING
FOUND
1000 NAIL
N 7,009,016.34
E 1,963,792.99

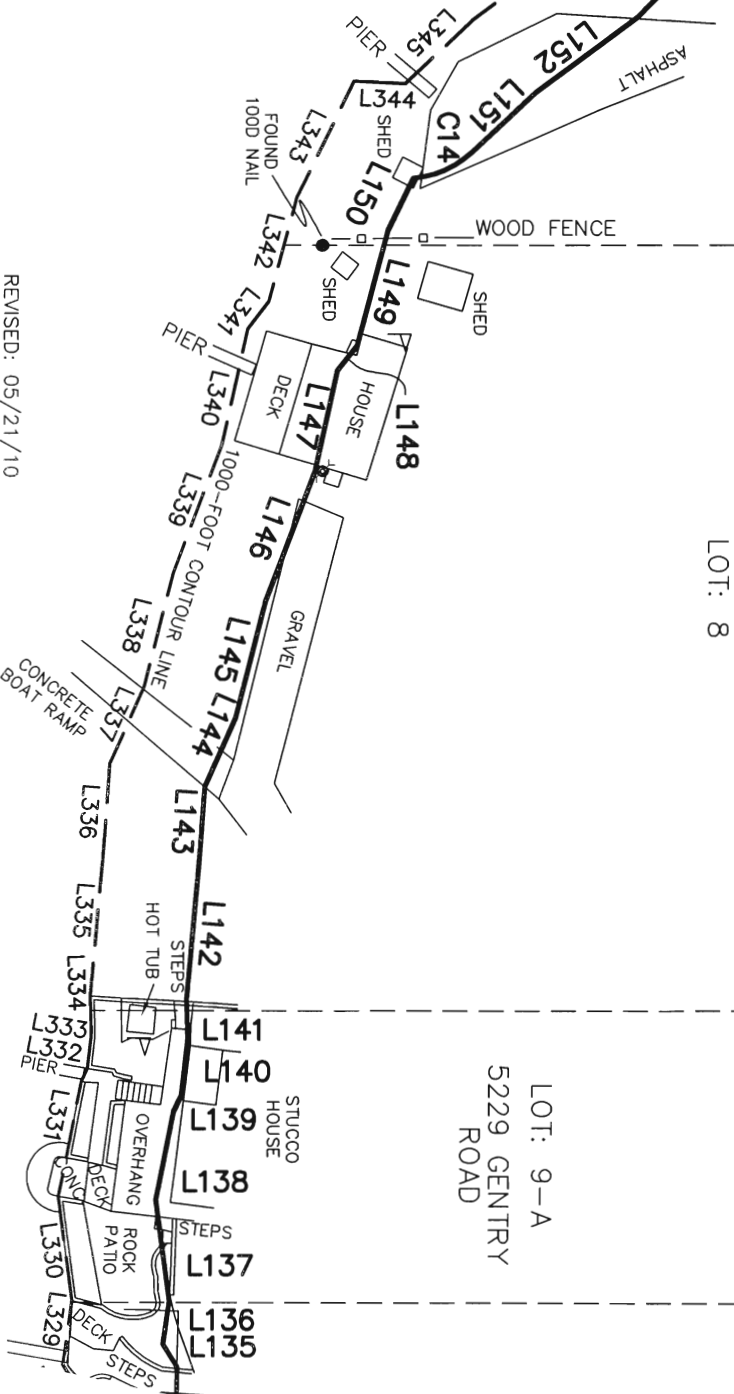
POSSUM KINGDOM CONTROL
MONUMENT NO. 14
S88°13'16"W, 1,935.12'

F.E.R.C. POINT OF BEGINNING
SET MAG
NAIL

BARBED WIRE FENCE
L160

LOT: 7
LEASE BLOCK R118
INTERIOR BLOCK
IMPROVEMENTS NOT SHOWN
AREA: 6-0
27,7350 ACRES
1,208,139 SQ. FT.

POSSUM KINGDOM LAKE
THE BRAZOS RIVER CONSERVATION
AND RECLAMATION DISTRICT
TRACT 27-2-29
VOLUME 184, PAGE 513
D.R.P.C.T.



THE BRAZOS RIVER CONSERVATION
AND RECLAMATION DISTRICT
TRACT 27-2-29
VOLUME 184, PAGE 513
D.R.P.C.T.

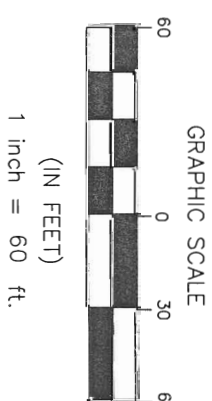
LOT: 8

LOT: 9-A
5229 GENTRY
ROAD

LOT: 9

SHEET 5

- LEGEND**
- = LEASE CORNER MARKER "AS NOTED"
 - OH = OVERHEAD LINES
 - ⊙ = WATER METER
 - ⚡ = FLAG POLE
 - ⊞ = TELEPHONE PEDESTAL
 - ⊞ = POWER POLE
 - ⊞ = WATER VALVE
 - ⊞ = IRRIGATION CONTROL VALVE
 - ⊞ = FIRE HYDRANT
 - ⊞ = POST
 - ⊞ = ELECTRIC PEDESTAL



STANDARD LAND SURVEY
OF
30.5640 ACRES
SITUATED IN TRACT 27-2-29
AREA 6-0, LOTS 7 - 9, 12 - 16, 19, 21,
9-A, 10-E, 10-W, 11-E, 11-W, 14-A, 17-E,
17-W, 18-E, 18-W, 20-A & 20-B
POSSUM KINGDOM LAKE
W.D. NICKLAS SURVEY, ABSTRACT 1114
PALO PINTO COUNTY, TEXAS

AECOM

AECOM USA GROUP, INC.
1200 SUMMIT AVENUE, SUITE 600
FORT WORTH, TEXAS 76102
WWW.AECOM.COM
817.698.6770

Date: 01/21/10 Project No. 60102581.02

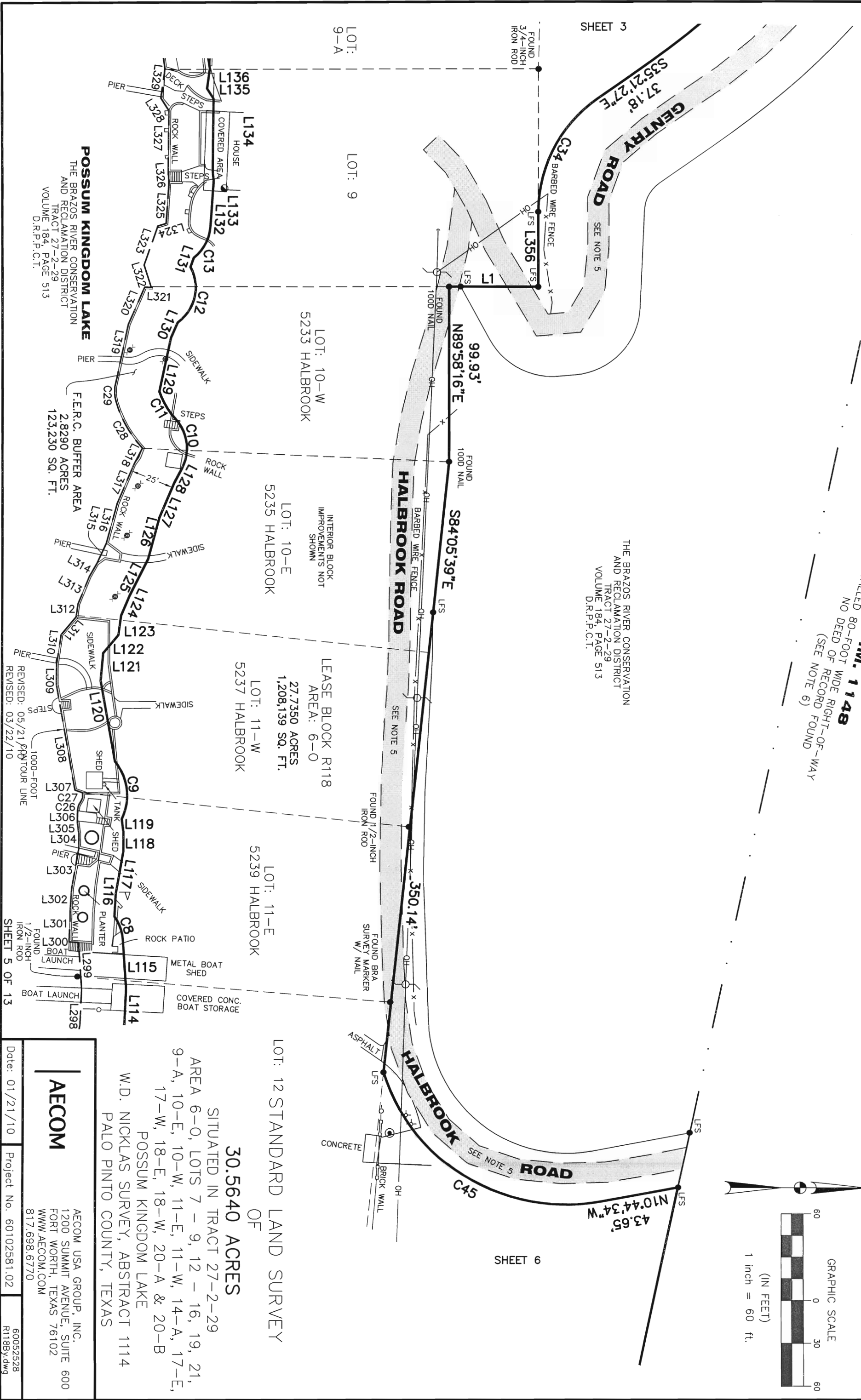
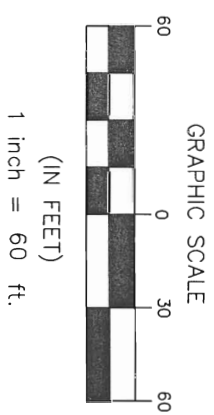
60052528
R118By.dwg

REVISED: 05/21/10
REVISED: 03/22/10

SHEET 4 OF 13

F.M. 1148
 CALLED 80-FOOT WIDE RIGHT-OF-WAY
 NO DEED OF RECORD FOUND
 (SEE NOTE 6)

THE BRAZOS RIVER CONSERVATION
 AND RECLAMATION DISTRICT
 TRACT 27-2-29
 VOLUME 184, PAGE 513
 D.R.P.C.T.



LOT: 12 STANDARD LAND SURVEY
 OF
30.5640 ACRES
 SITUATED IN TRACT 27-2-29
 AREA 6-0, LOTS 7 - 9, 12 - 16, 19, 21,
 9-A, 10-E, 10-W, 11-E, 11-W, 14-A, 17-E,
 17-W, 18-E, 18-W, 20-A & 20-B
 POSSUM KINGDOM LAKE
 W.D. NICKLAS SURVEY, ABSTRACT 1114
 PALO PINTO COUNTY, TEXAS

AECOM

AECOM USA GROUP, INC.
 1200 SUMMIT AVENUE, SUITE 600
 FORT WORTH, TEXAS 76102
 WWW.AECOM.COM
 817.698.6770

Date: 01/21/10 Project No. 60102581.02 60052528 R118By.dwg

NO PART OF THIS DRAWING MAY BE REPRODUCED OR TRANSMITTED IN ANY WAY OR FORM (ELECTRONIC, MECHANICAL, PHOTOCOPIING, OR OTHERWISE) WITHOUT THE EXPRESS WRITTEN PERMISSION OF AECOM.

- LEGEND**
- = LEASE CORNER MARKER
 - "AS NOTED"
 - OH = OVERHEAD LINES
 - = WATER METER
 - △ = FLAG POLE
 - = TELEPHONE PEDESTAL
 - = POWER POLE
 - ⊗ = WATER VALVE
 - ⊕ = IRRIGATION CONTROL VALVE
 - ⊙ = FIRE HYDRANT
 - ⊖ = POST
 - ⊞ = ELECTRIC PEDESTAL

SHEET 5

LOT: 11-E

LOT: 12

LOT: 13

LOT: 14-A

LOT: 14

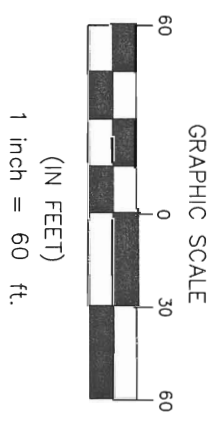
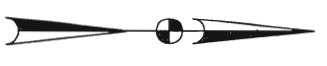
W.D. NICKLAS SURVEY, ABSTRACT 1114

578°06'08"E

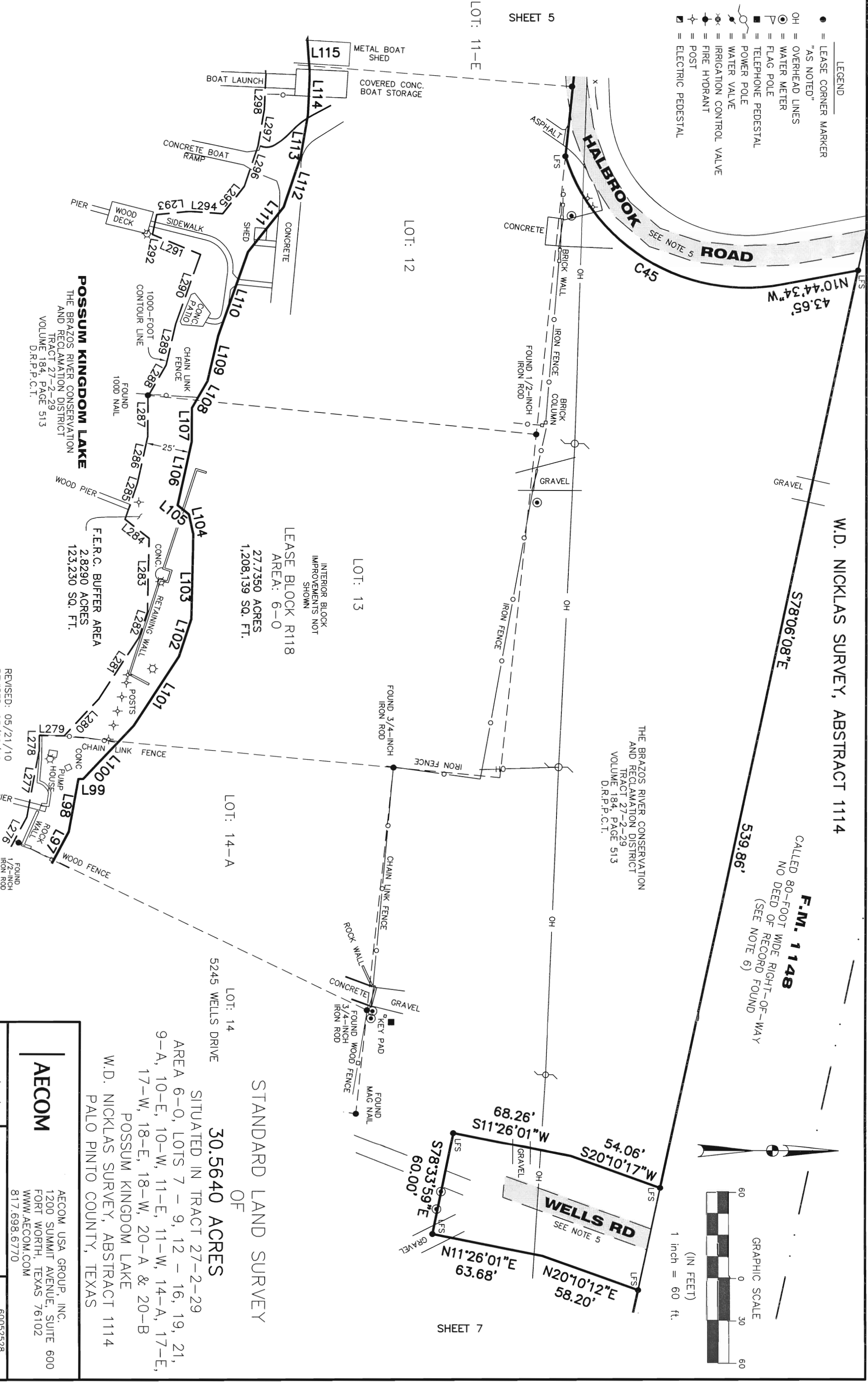
539.86'

CALLLED **F.M. 1148**
NO DEED OF RECORD FOUND
(SEE NOTE 6)

THE BRAZOS RIVER CONSERVATION
AND RECLAMATION DISTRICT
TRACT 27-2-29
VOLUME 184, PAGE 513
D.R.P.P.C.T.



SHEET 7



LEASE BLOCK R118
AREA: 6-0
27,7350 ACRES
1,208,139 SQ. FT.

POSSUM KINGDOM LAKE
THE BRAZOS RIVER CONSERVATION
AND RECLAMATION DISTRICT
TRACT 27-2-29
VOLUME 184, PAGE 513
D.R.P.P.C.T.

F.E.R.C. BUFFER AREA
2,8290 ACRES
123,230 SQ. FT.

STANDARD LAND SURVEY
OF
30.5640 ACRES

SITUATED IN TRACT 27-2-29
AREA 6-0, LOTS 7 - 9, 12 - 16, 19, 21,
9-A, 10-E, 10-W, 11-E, 11-W, 14-A, 17-E,
17-W, 18-E, 18-W, 20-A & 20-B
POSSUM KINGDOM LAKE
W.D. NICKLAS SURVEY, ABSTRACT 1114
PALO PINTO COUNTY, TEXAS

AECOM

AECOM USA GROUP, INC.
1200 SUMMIT AVENUE, SUITE 600
FORT WORTH, TEXAS 76102
WWW.AECOM.COM
817.698.6770

Date: 01/21/10 Project No. 60102581.02 60052528 R118By.dwg

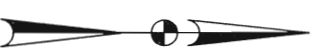
NO PART OF THIS DRAWING MAY BE REPRODUCED OR TRANSMITTED IN ANY FORM OR BY ANY MEANS, ELECTRONIC, MECHANICAL, PHOTOCOPYING, OR OTHERWISE, WITHOUT THE EXPRESS WRITTEN PERMISSION OF AECOM.

W.D. NICKLAS SURVEY, ABSTRACT 1114

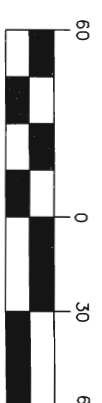
F.M. 1148

CALLED 80-FOOT WIDE RIGHT-OF-WAY
NO DEED OF RECORD FOUND
(SEE NOTE 6)

THE BRAZOS RIVER CONSERVATION
AND RECLAMATION DISTRICT
TRACT 27-2-29
VOLUME 184, PAGE 513
D.R.P.C.T.



GRAPHIC SCALE

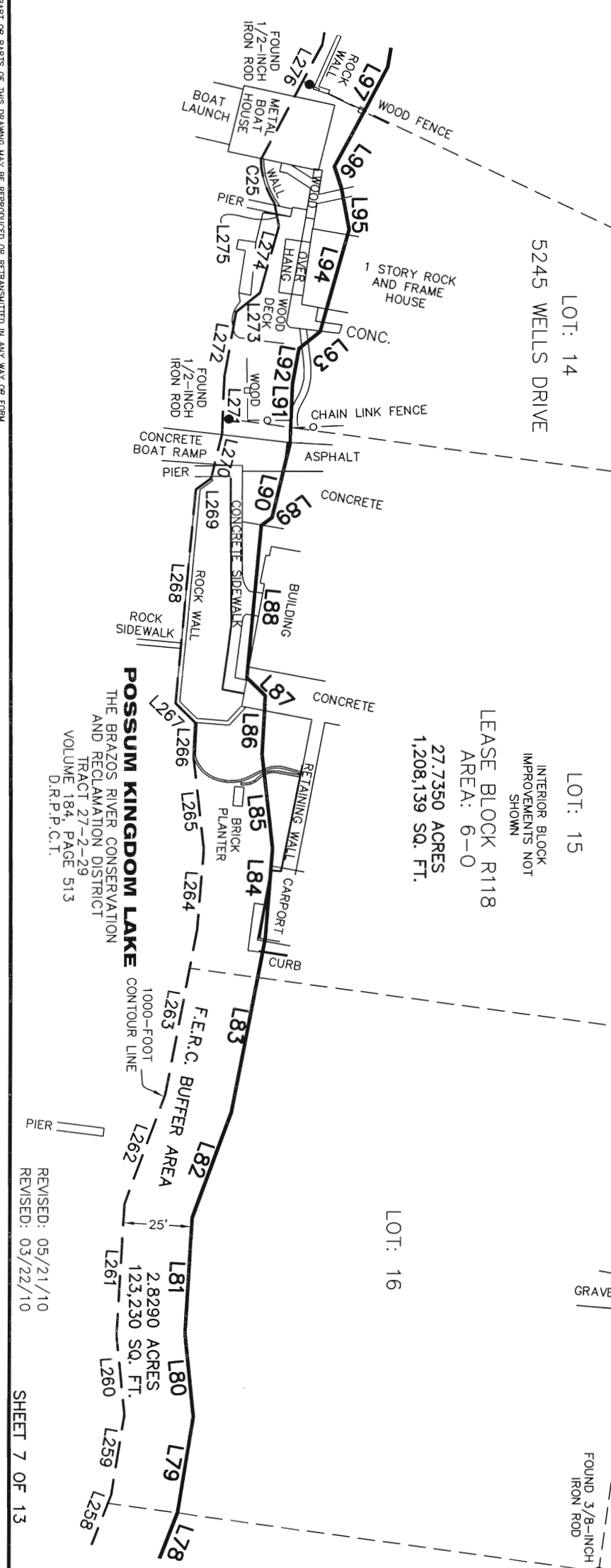
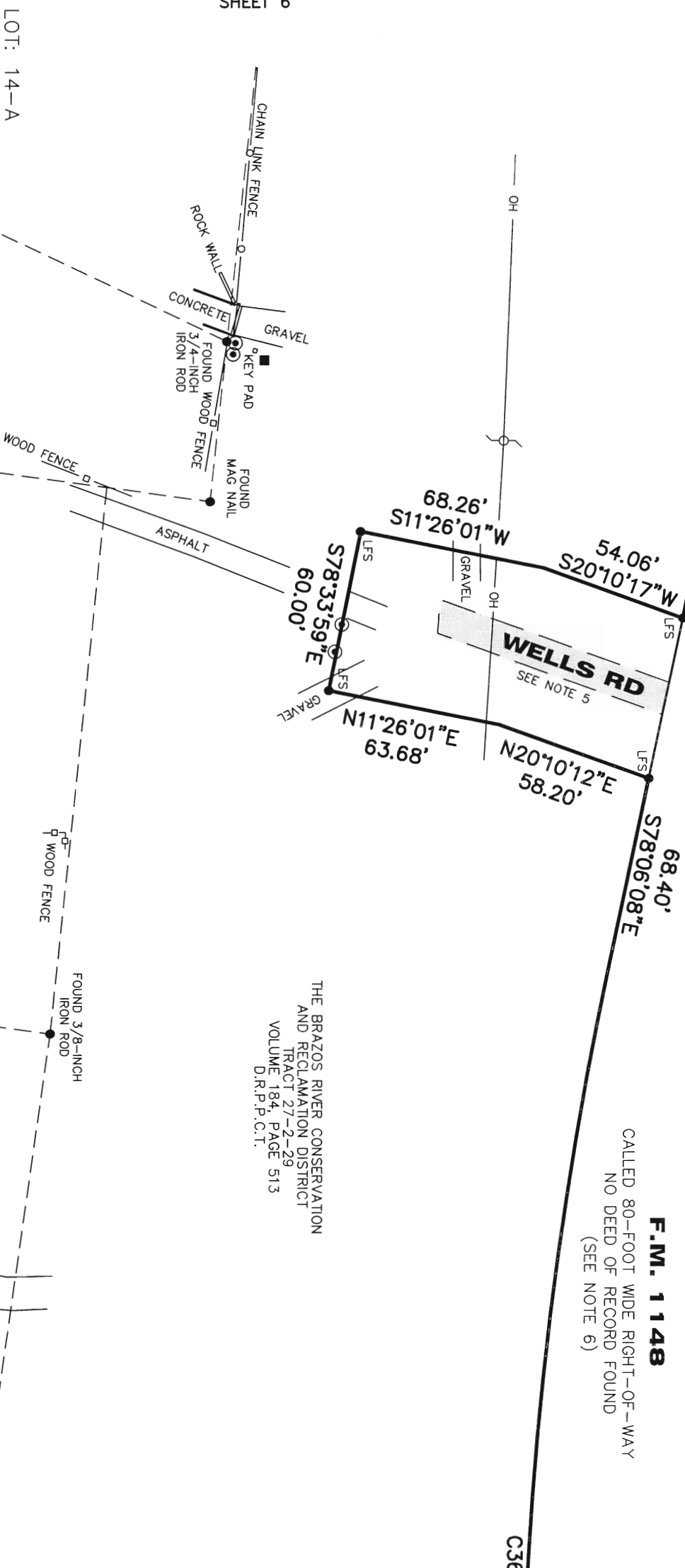


(IN FEET)
1 inch = 60 ft.

LEGEND

- = LEASE CORNER MARKER "AS NOTED"
- OH = OVERHEAD LINES
- ⊙ = WATER METER
- P = FLAG POLE
- = TELEPHONE PEDESTAL
- ⊥ = POWER POLE
- ⌋ = WATER VALVE
- ⌋ = IRRIGATION CONTROL VALVE
- ⌋ = FIRE HYDRANT
- ⌋ = POST
- ⌋ = ELECTRIC PEDESTAL

SHEET 8



STANDARD LAND SURVEY
OF
30.5640 ACRES

SITUATED IN TRACT 27-2-29
AREA 6-0, LOTS 7 - 9, 12 - 16, 19, 21,
9-A, 10-E, 10-W, 11-E, 11-W, 14-A, 17-E,
17-W, 18-E, 18-W, 20-A & 20-B
POSSUM KINGDOM LAKE
W.D. NICKLAS SURVEY, ABSTRACT 1114
PALO PINTO COUNTY, TEXAS

AECOM

AECOM USA GROUP, INC.
1200 SUMMIT AVENUE, SUITE 600
FORT WORTH, TEXAS 76102
WWW.AECOM.COM
817.698.6770

Date: 01/21/10 Project No. 60102581.02 60052528 R118By.dwg

REVISED: 05/21/10 SHEET 7 OF 13
REVISED: 03/22/10

W.D. NICKLAS SURVEY, ABSTRACT 1114

F.M. 1148

CALLED 80-FOOT WIDE RIGHT-OF-WAY
NO DEED OF RECORD FOUND
(SEE NOTE 6)

N84°35'07"E

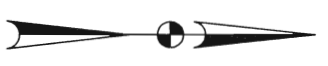
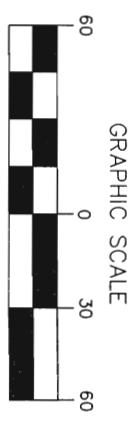
343.77'

STRINGER LANE
SEE NOTE 5

SHEET 7

THE BRAZOS RIVER CONSERVATION
AND RECLAMATION DISTRICT
TRACT 27-2-29
VOLUME 184, PAGE 513
D.R.P.P.C.T.

SHEET 10



- LEGEND
- = LEASE CORNER MARKER "AS NOTED"
 - OH = OVERHEAD LINES
 - ⊙ = WATER METER
 - ⊥ = FLAG POLE
 - = TELEPHONE PEDESTAL
 - ⊥ = POWER POLE
 - ⊥ = WATER VALVE
 - ⊥ = IRRIGATION CONTROL VALVE
 - ⊥ = FIRE HYDRANT
 - ⊥ = POST
 - ⊥ = ELECTRIC PEDESTAL

LOT: 16

LOT: 17-W

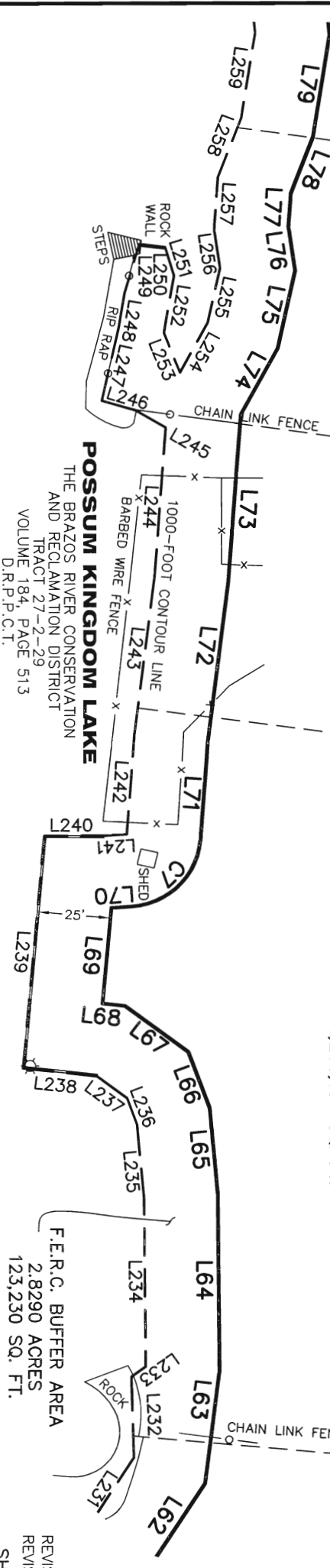
LOT: 17-E

LOT: 18-W

LOT: 18-E

LEASE BLOCK R118
AREA: 6-0
27,7350 ACRES
1,208,139 SQ. FT.

SHEET 9



STANDARD LAND SURVEY
OF
30.5640 ACRES
SITUATED IN TRACT 27-2-29
AREA 6-0, LOTS 7 - 9, 12 - 16, 19, 21,
9-A, 10-E, 10-W, 11-E, 11-W, 14-A, 17-E,
17-W, 18-E, 18-W, 20-A & 20-B
POSSUM KINGDOM LAKE
W.D. NICKLAS SURVEY, ABSTRACT 1114
PALO PINTO COUNTY, TEXAS

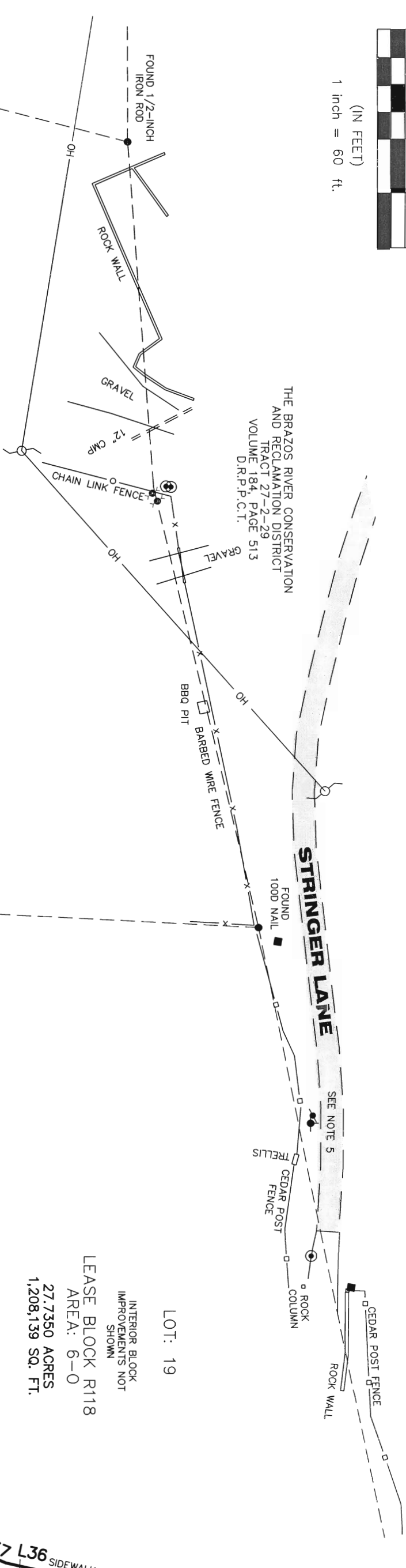
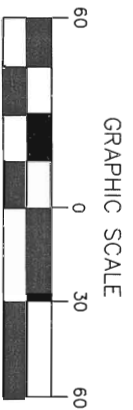
AECOM

AECOM USA GROUP, INC.
1200 SUMMIT AVENUE, SUITE 600
FORT WORTH, TEXAS 76102
WWW.AECOM.COM
817.698.6770

REVISED: 05/21/10
REVISED: 03/22/10
SHEET 8 OF 13

Date: 01/21/10 Project No. 60102581.02 60052528 R118By.dwg

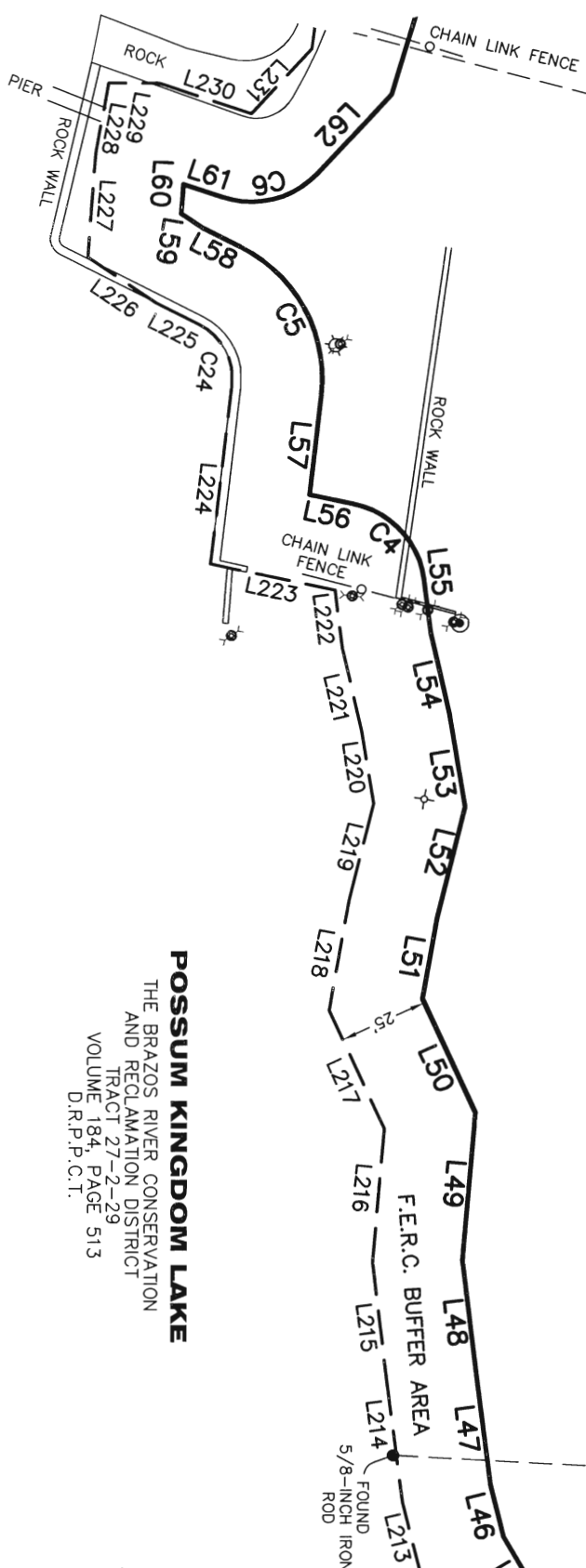
NO PART OR PARTS OF THIS DRAWING MAY BE REPRODUCED OR RETRANSMITTED IN ANY WAY OR FORM (ELECTRONIC, MECHANICAL, PHOTOCOPYING, OR OTHERWISE) WITHOUT THE EXPRESS WRITTEN PERMISSION OF AECOM.



SHEET 8

LOT: 18-W

LOT: 18-E



POSSUM KINGDOM LAKE
THE BRAZOS RIVER CONSERVATION
AND RECLAMATION DISTRICT
TRACT 27-2-29
VOLUME 184, PAGE 513
D.R.P.P.C.T.

- LEGEND**
- = LEASE CORNER MARKER "AS NOTED"
 - = OVERHEAD LINES
 - = WATER METER
 - △ = FLAG POLE
 - = TELEPHONE PEDESTAL
 - = POWER POLE
 - = WATER VALVE
 - = IRRIGATION CONTROL VALVE
 - = FIRE HYDRANT
 - = POST
 - = ELECTRIC PEDESTAL

LOT: 19
INTERIOR BLOCK
IMPROVEMENTS NOT
SHOWN
LEASE BLOCK R118
AREA: 6-0
27,7350 ACRES
1,208,139 SQ. FT.

SHEET 11

STANDARD LAND SURVEY
OF
30.5640 ACRES

SITUATED IN TRACT 27-2-29
AREA 6-0, LOTS 7 - 9, 12 - 16, 19, 21,
9-A, 10-E, 10-W, 11-E, 11-W, 14-A, 17-E,
17-W, 18-E, 18-W, 20-A & 20-B
POSSUM KINGDOM LAKE
W.D. NICKLAS SURVEY, ABSTRACT 1114
PALO PINTO COUNTY, TEXAS

AECOM

AECOM USA GROUP, INC.
1200 SUMMIT AVENUE, SUITE 600
FORT WORTH, TEXAS 76102
WWW.AECOM.COM
817.698.6770

REVISED: 05/21/10
REVISED: 03/22/10

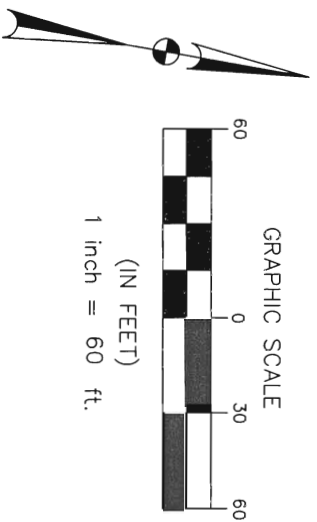
SHEET 9 OF 13

Date: 01/21/10

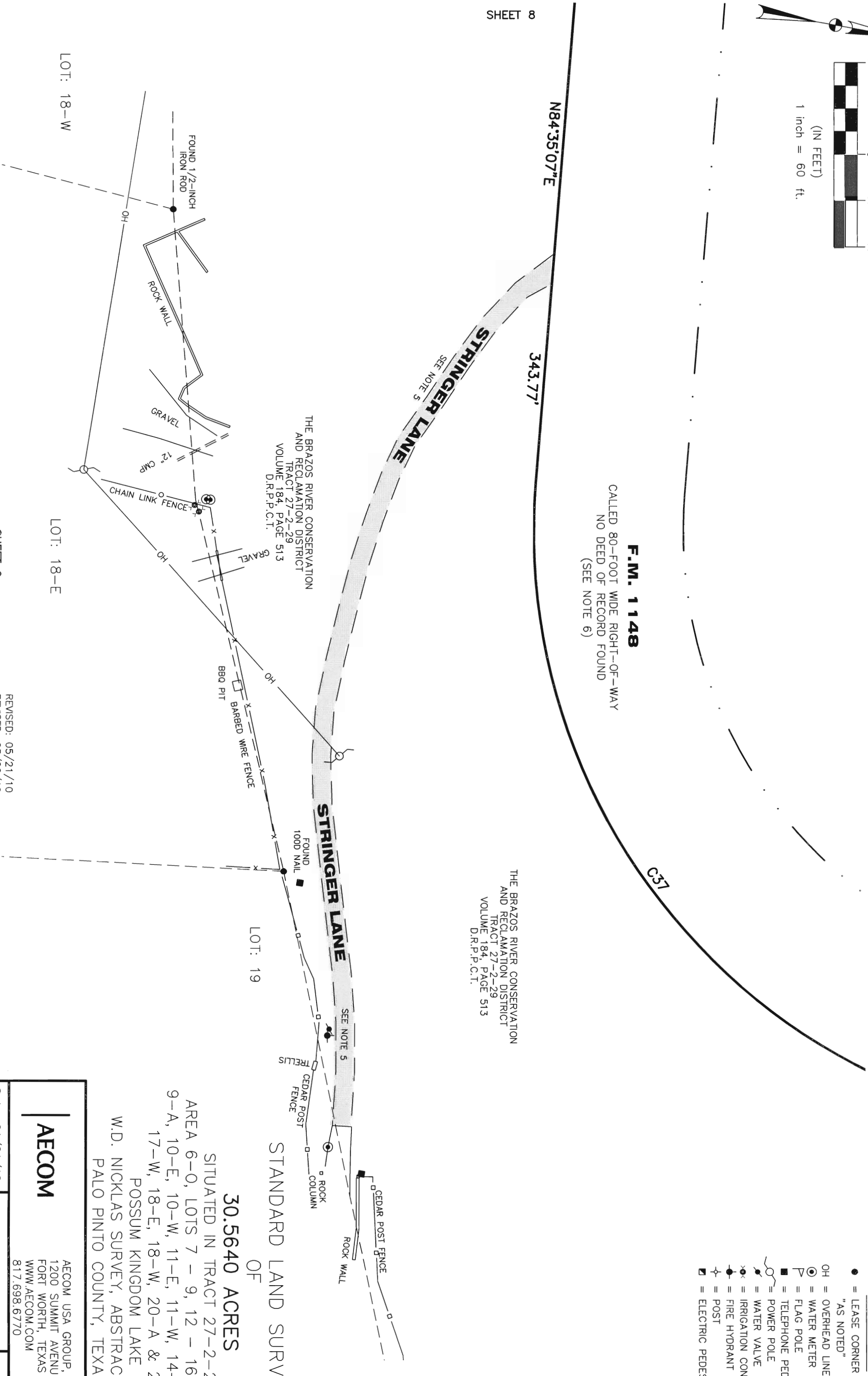
Project No. 60102581.02

60052528
R118By.dwg

W.D. NICKLAS SURVEY, ABSTRACT 1114



SHEET 8



F.M. 1148
 CALLED 80-FOOT WIDE RIGHT-OF-WAY
 NO DEED OF RECORD FOUND
 (SEE NOTE 6)

THE BRAZOS RIVER CONSERVATION
 AND RECLAMATION DISTRICT
 TRACT 27-2-29
 VOLUME 184, PAGE 513
 D.R.P.C.T.

THE BRAZOS RIVER CONSERVATION
 AND RECLAMATION DISTRICT
 TRACT 27-2-29
 VOLUME 184, PAGE 513
 D.R.P.C.T.

- LEGEND**
- = LEASE CORNER MARKER
 - "AS NOTED"
 - OH = OVERHEAD LINES
 - ⊙ = WATER METER
 - ⊕ = FLAG POLE
 - = TELEPHONE PEDESTAL
 - = POWER POLE
 - ⊙ = WATER VALVE
 - ⊙ = IRRIGATION CONTROL VALVE
 - ⊕ = FIRE HYDRANT
 - ⊕ = POST
 - = ELECTRIC PEDESTAL

SHEET 11

STANDARD LAND SURVEY
 OF
30.5640 ACRES
 SITUATED IN TRACT 27-2-29
 AREA 6-0, LOTS 7 - 9, 12 - 16, 19, 21,
 9-A, 10-E, 10-W, 11-E, 11-W, 14-A, 17-E,
 17-W, 18-E, 18-W, 20-A & 20-B
 POSSUM KINGDOM LAKE
 W.D. NICKLAS SURVEY, ABSTRACT 1114
 PALO PINTO COUNTY, TEXAS

AECOM

AECOM USA GROUP, INC.
 1200 SUMMIT AVENUE, SUITE 600
 FORT WORTH, TEXAS 76102
 WWW.AECOM.COM
 817.698.6770

Date: 01/21/10 Project No. 60102581.02 60052528 R118By.dwg

NO PART OF THIS DRAWING MAY BE REPRODUCED OR TRANSMITTED IN ANY WAY OR FORM (ELECTRONIC, MECHANICAL, PHOTOCOPYING, OR OTHERWISE) WITHOUT THE EXPRESS WRITTEN PERMISSION OF AECOM.

REVISED: 05/21/10
 REVISED: 03/22/10

SHEET 9

SHEET 10 OF 13

F.M. 1148
 CALLED 80-FOOT WIDE RIGHT-OF-WAY
 NO DEED OF RECORD FOUND
 (SEE NOTE 6)
C37

W.D. NICKLAS SURVEY, ABSTRACT 1114

SHEET 12

THE BRAZOS RIVER CONSERVATION
 AND RECLAMATION DISTRICT
 TRACT 27-2-29
 VOLUME 184, PAGE 513
 D.R.P.P.C.T.

SHEET 10

LOT: 18-E

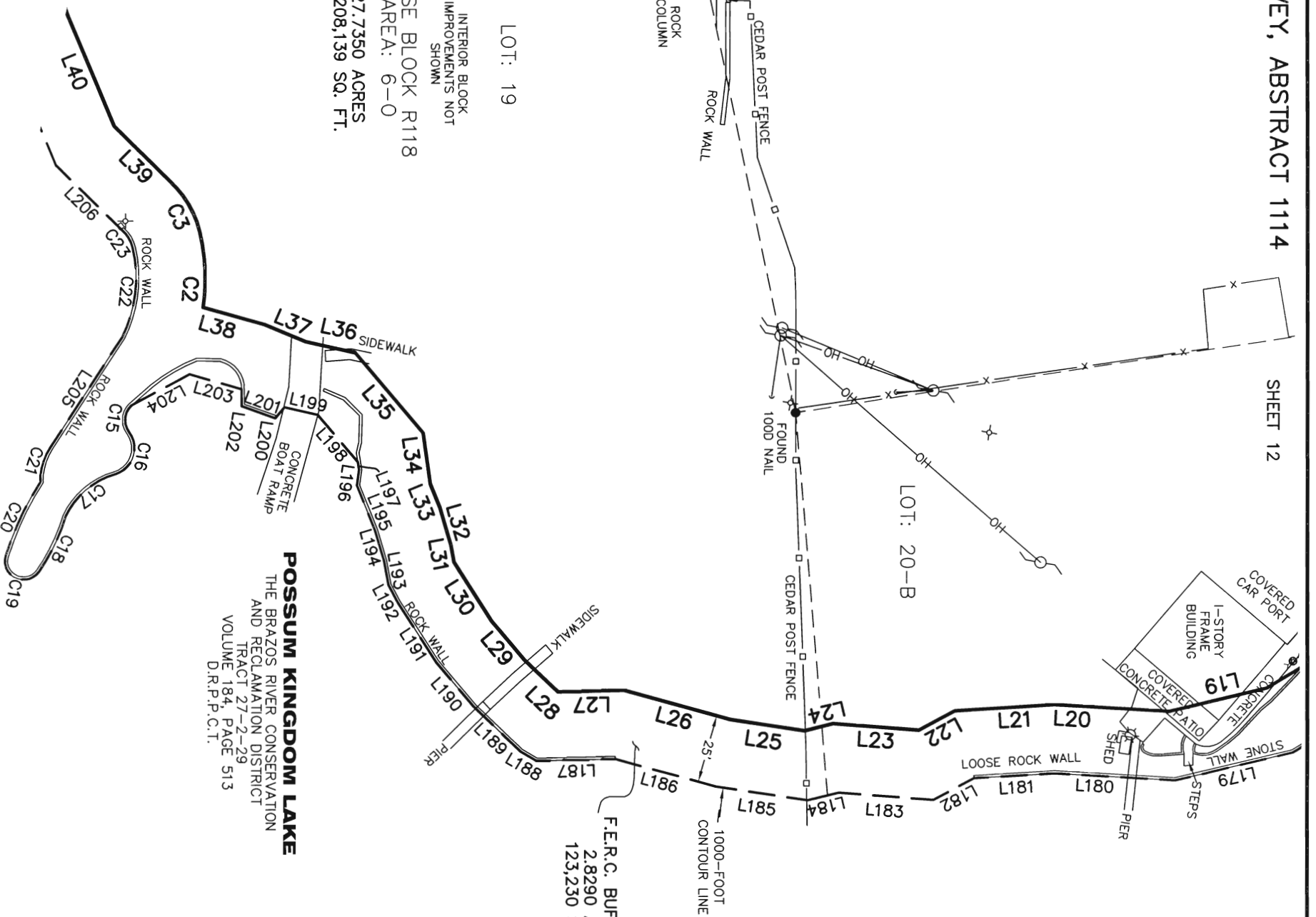
LOT: 19

LOT: 20-B

LEASE BLOCK R118
 AREA: 6-0
 27,7350 ACRES
 1,208,139 SQ. FT.

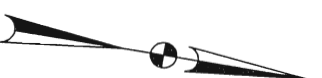
POSSUM KINGDOM LAKE
 THE BRAZOS RIVER CONSERVATION
 AND RECLAMATION DISTRICT
 TRACT 27-2-29
 VOLUME 184, PAGE 513
 D.R.P.P.C.T.

F.E.R.C. BUFFER AREA
 2,8290 ACRES
 123,230 SQ. FT.

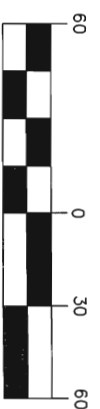


REVISED: 05/21/10
 REVISED: 03/22/10

SHEET 11 OF 13



GRAPHIC SCALE



(IN FEET)
 1 inch = 60 ft.

LEGEND

- = LEASE CORNER MARKER "AS NOTED"
- OH = OVERHEAD LINES
- ⊙ = WATER METER
- ⊥ = FLAG POLE
- = TELEPHONE PEDESTAL
- = POWER POLE
- ⊕ = WATER VALVE
- ⊗ = IRRIGATION CONTROL VALVE
- ⊙ = FIRE HYDRANT
- ⊥ = POST
- ⊥ = ELECTRIC PEDESTAL

STANDARD LAND SURVEY
 OF
30.5640 ACRES

SITUATED IN TRACT 27-2-29
 AREA 6-0, LOTS 7 - 9, 12 - 16, 19, 21,
 9-A, 10-E, 10-W, 11-E, 11-W, 14-A, 17-E,
 17-W, 18-E, 18-W, 20-A & 20-B
 POSSUM KINGDOM LAKE
 W.D. NICKLAS SURVEY, ABSTRACT 1114
 PALO PINTO COUNTY, TEXAS

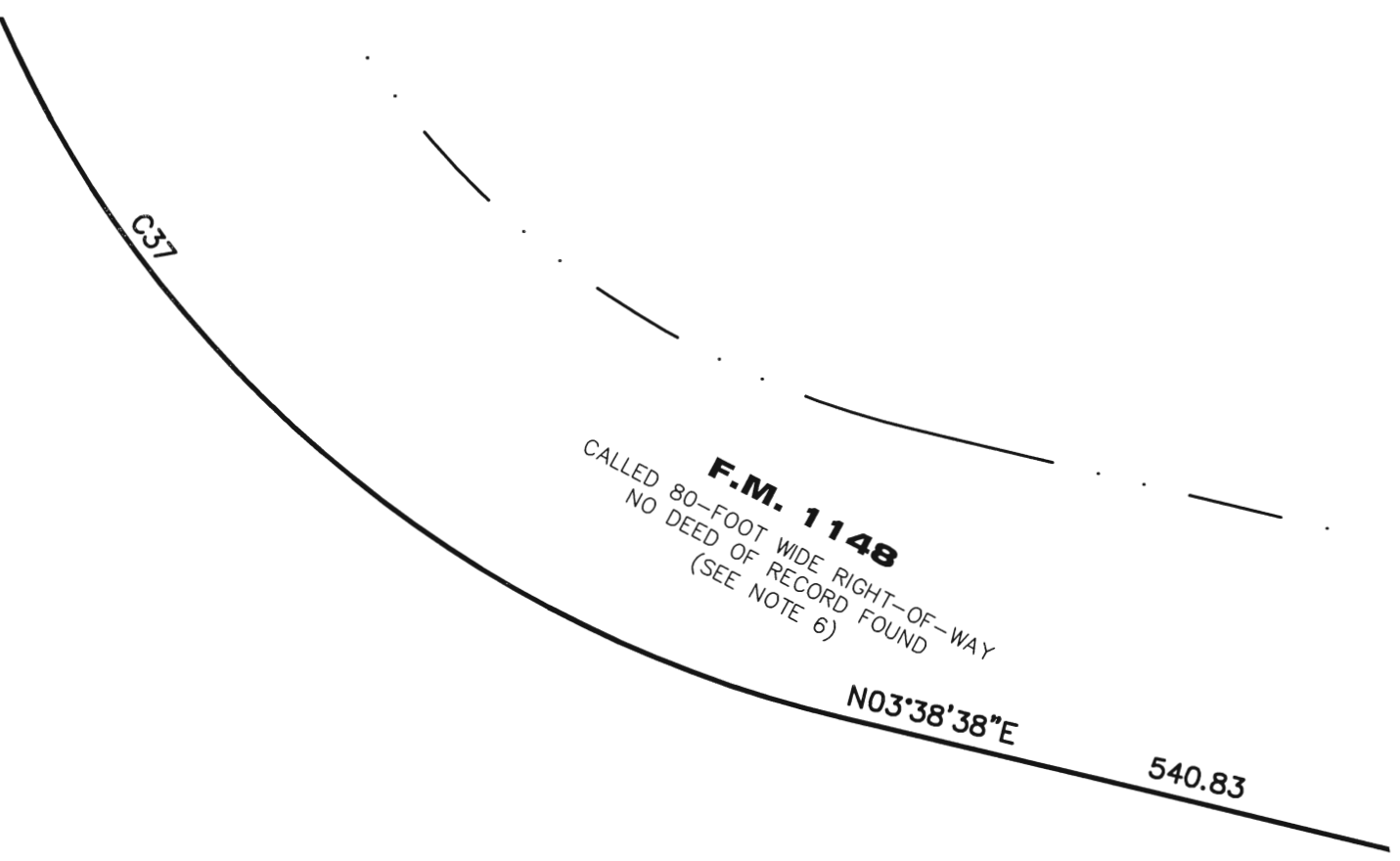
AECOM

AECOM USA GROUP, INC.
 1200 SUMMIT AVENUE, SUITE 600
 FORT WORTH, TEXAS 76102
 WWW.AECOM.COM
 817.698.6770

Date: 01/21/10 Project No. 60102581.02

60052528
 R118By.dwg

LOT: 20-A

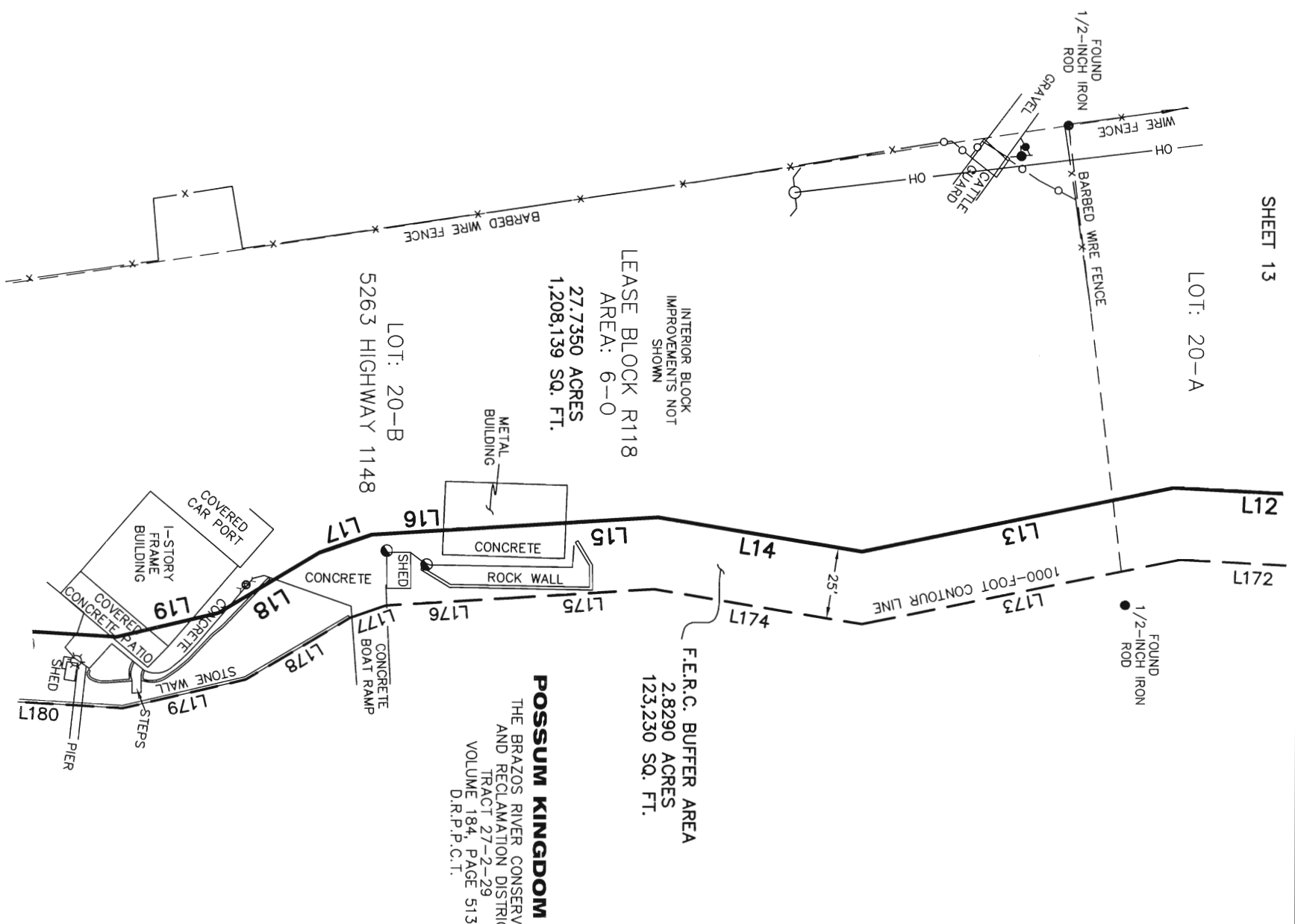


F.M. 1148
 CALLED 80-FOOT WIDE RIGHT-OF-WAY
 NO DEED OF RECORD FOUND
 (SEE NOTE 6)

N03°38'38"E

540.83

C37



LEASE BLOCK R118
 AREA: 6-0
 27,7350 ACRES
 1,208,139 SQ. FT.

F.E.R.C. BUFFER AREA
 2,8290 ACRES
 123,230 SQ. FT.

POSSUM KINGDOM LAKE
 THE BRAZOS RIVER CONSERVATION
 AND RECLAMATION DISTRICT
 TRACT 27-2-29
 VOLUME 184, PAGE 513
 D.R.P.C.T.

LOT: 20-B
 5263 HIGHWAY 1148

LOT: 19



- LEGEND**
- = LEASE CORNER MARKER "AS NOTED"
 - OH = OVERHEAD LINES
 - ⊙ = WATER METER
 - ⊥ = FLAG POLE
 - = TELEPHONE PEDESTAL
 - ⊖ = POWER POLE
 - ⊕ = WATER VALVE
 - ⊗ = IRRIGATION CONTROL VALVE
 - ⊙ = FIRE HYDRANT
 - ⊕ = POST
 - ⊖ = ELECTRIC PEDESTAL

STANDARD LAND SURVEY
 OF
30.5640 ACRES

SITUATED IN TRACT 27-2-29
 AREA 6-0, LOTS 7 - 9, 12 - 16, 19, 21,
 9-A, 10-E, 10-W, 11-E, 11-W, 14-A, 17-E,
 17-W, 18-E, 18-W, 20-A & 20-B
 POSSUM KINGDOM LAKE
 W.D. NICKLAS SURVEY, ABSTRACT 1114
 PALO PINTO COUNTY, TEXAS

AECOM

AECOM USA GROUP, INC.
 1200 SUMMIT AVENUE, SUITE 600
 FORT WORTH, TEXAS 76102
 WWW.AECOM.COM
 817.698.6770

Date: 01/21/10 Project No. 60102581.02

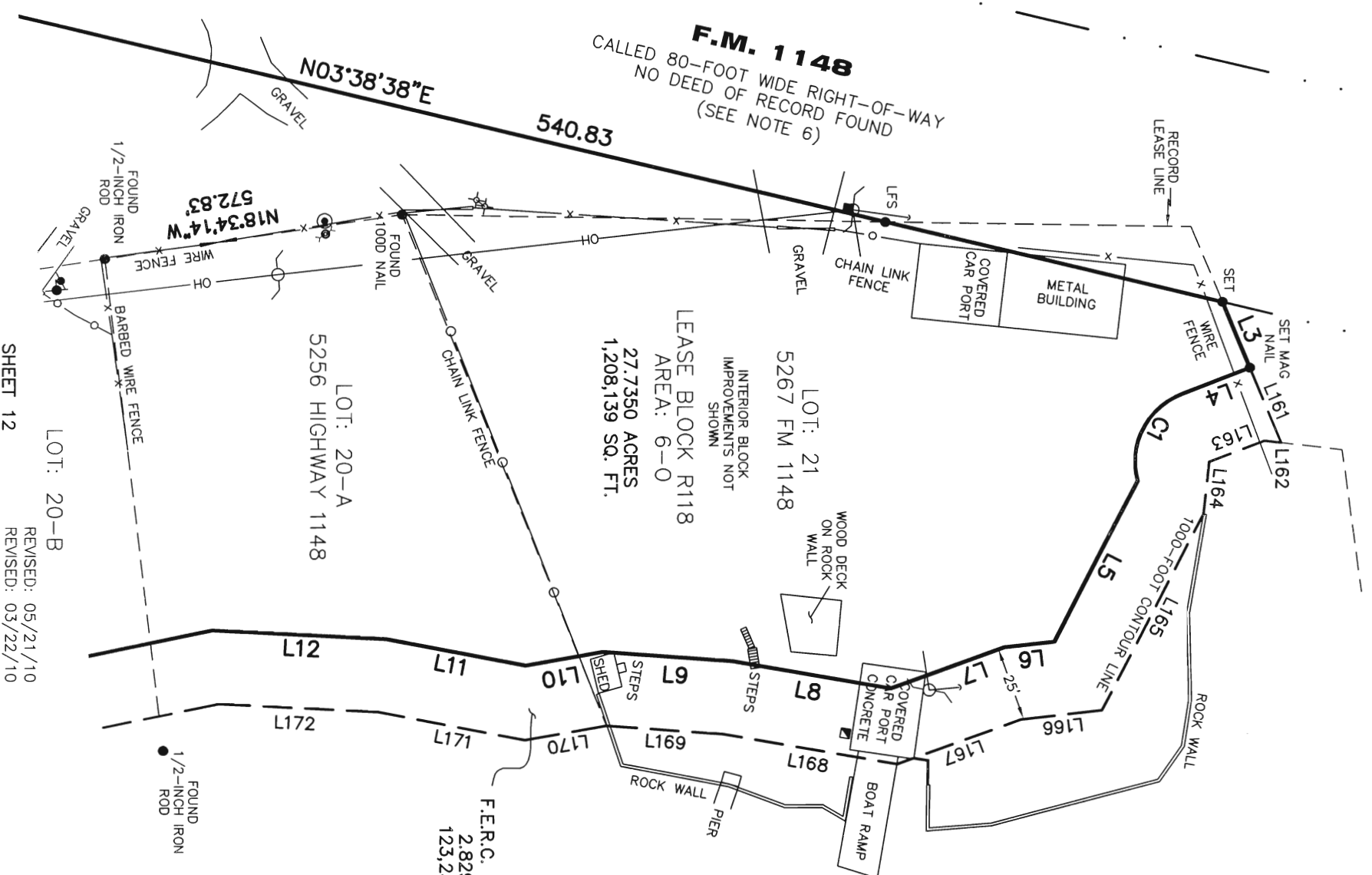
60052528
 R118By.dwg

NO PART OR PARTS OF THIS DRAWING MAY BE REPRODUCED OR RETRANSMITTED IN ANY WAY OR FORM (ELECTRONIC, MECHANICAL, PHOTOCOPYING, OR OTHERWISE) WITHOUT THE EXPRESS WRITTEN PERMISSION OF AECOM.

W.D. NICKLAS SURVEY, ABSTRACT 1114

- LEGEND**
- = LEASE CORNER MARKER "AS NOTED"
 - OH = OVERHEAD LINES
 - ⊙ = WATER METER
 - ⊐ = FLAG POLE
 - = TELEPHONE PEDESTAL
 - ⊕ = POWER POLE
 - ⊖ = WATER VALVE
 - ⊗ = IRRIGATION CONTROL VALVE
 - ⊙ = FIRE HYDRANT
 - ⊕ = POST
 - ⊖ = ELECTRIC PEDESTAL

F.M. 1148
 CALLED 80-FOOT WIDE RIGHT-OF-WAY
 NO DEED OF RECORD FOUND
 (SEE NOTE 6)



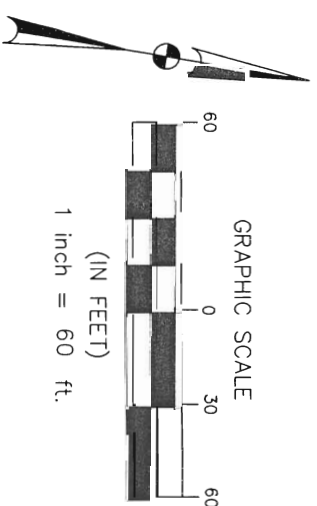
LOT: 21
 5267 FM 1148
 INTERIOR BLOCK
 IMPROVEMENTS NOT
 SHOWN
 LEASE BLOCK R118
 AREA: 6-0
 1,208,139 SQ. FT.

LOT: 20-A
 5256 HIGHWAY 1148

LOT: 20-B

F.E.R.C. BUFFER AREA
 2,8290 ACRES
 123,230 SQ. FT.

POSSUM KINGDOM LAKE
 THE BRAZOS RIVER CONSERVATION
 AND RECLAMATION DISTRICT
 TRACT 27-2-29
 VOLUME 184, PAGE 513
 D.R.P.C.T.



STANDARD LAND SURVEY
 OF
30.5640 ACRES
 SITUATED IN TRACT 27-2-29
 AREA 6-0, LOTS 7 - 9, 12 - 16, 19, 21,
 9-A, 10-E, 10-W, 11-E, 11-W, 14-A, 17-E,
 17-W, 18-E, 18-W, 20-A & 20-B
 POSSUM KINGDOM LAKE
 W.D. NICKLAS SURVEY, ABSTRACT 1114
 PALO PINTO COUNTY, TEXAS

AECOM	
AECOM USA GROUP, INC. 1200 SUMMIT AVENUE, SUITE 600 FORT WORTH, TEXAS 76102 WWW.AECOM.COM 817.698.6770	
Date: 01/21/10	Project No. 60102581.02
	60052528 R118By.dwg

NO PART OR PARTS OF THIS DRAWING MAY BE REPRODUCED OR TRANSMITTED IN ANY WAY OR FORM (ELECTRONIC, MECHANICAL, PHOTOCOPYING, OR OTHERWISE) WITHOUT THE EXPRESS WRITTEN PERMISSION OF AECOM.