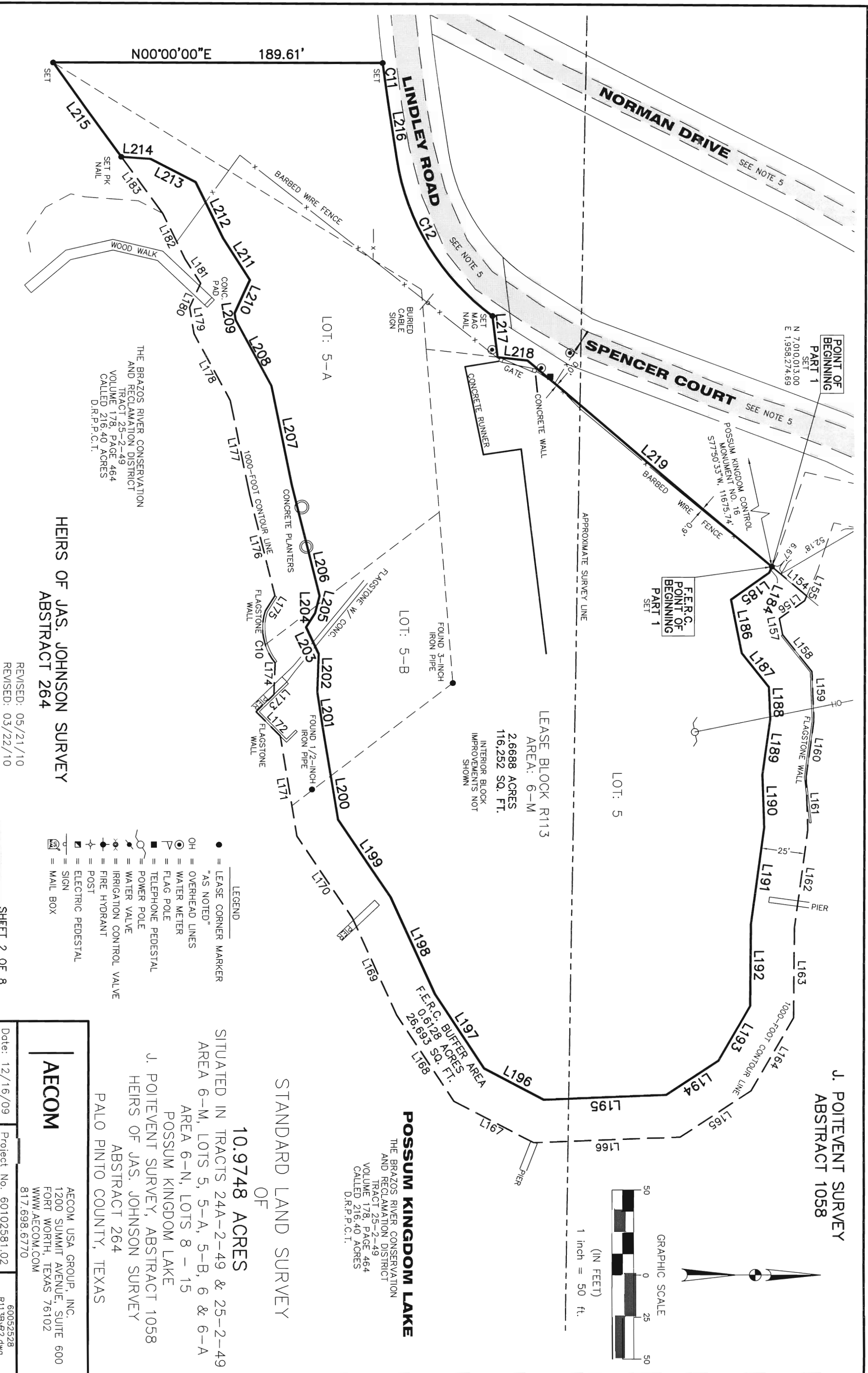




NO PART OR PARTS OF THIS DRAWING MAY BE REPRODUCED OR TRANSMITTED IN ANY WAY OR FORM (ELECTRONIC, MECHANICAL, PHOTOCOPIING, OR OTHERWISE) WITHOUT THE EXPRESS WRITTEN PERMISSION OF AECOM.



POINT OF BEGINNING PART 1  
 SET  
 N 7.010,013.00  
 E 1,958,274.69

F.E.R.C. POINT OF BEGINNING PART 1  
 SET

POSSUM KINGDOM CONTROL MONUMENT NO. 16  
 S77°50'33"W, 11675.74  
 6.67' 52.18'

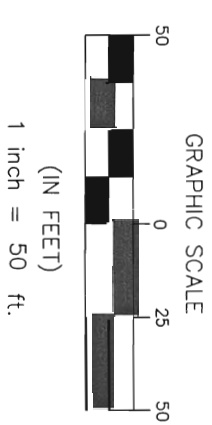
LEASE BLOCK R113  
 AREA: 6-M  
 2,6688 ACRES  
 116,252 SQ. FT.  
 INTERIOR BLOCK IMPROVEMENTS NOT SHOWN

**POSSUM KINGDOM LAKE**  
 THE BRAZOS RIVER CONSERVATION AND RECLAMATION DISTRICT  
 TRACT 25-2-49  
 VOLUME 178, PAGE 464  
 CALLED 216.40 ACRES  
 D.R.P.P.C.T.

THE BRAZOS RIVER CONSERVATION AND RECLAMATION DISTRICT  
 TRACT 25-2-49  
 VOLUME 178, PAGE 464  
 CALLED 216.40 ACRES  
 D.R.P.P.C.T.

HEIRS OF JAS. JOHNSON SURVEY  
 ABSTRACT 264

J. POITEVENT SURVEY  
 ABSTRACT 1058



- LEGEND
- = LEASE CORNER MARKER "AS NOTED"
  - OH = OVERHEAD LINES
  - ⊙ = WATER METER
  - ▣ = FLAG POLE
  - = TELEPHONE PEDESTAL
  - ⊕ = POWER POLE
  - ⊗ = WATER VALVE
  - ⊙ = IRRIGATION CONTROL VALVE
  - ⊕ = FIRE HYDRANT
  - ⊕ = POST
  - ⊕ = ELECTRIC PEDESTAL
  - ⊕ = SIGN
  - ⊕ = MAIL BOX

STANDARD LAND SURVEY  
 OF  
**10.9748 ACRES**  
 SITUATED IN TRACTS 24A-2-49 & 25-2-49  
 AREA 6-M, LOTS 5, 5-A, 5-B, 6 & 6-A  
 AREA 6-N, LOTS 8 - 15  
 POSSUM KINGDOM LAKE  
 J. POITEVENT SURVEY, ABSTRACT 1058  
 HEIRS OF JAS. JOHNSON SURVEY  
 ABSTRACT 264  
 PALO PINTO COUNTY, TEXAS

REVISED: 05/21/10  
 REVISED: 03/22/10

SHEET 2 OF 8

Date: 12/16/09

**AECOM**

AECOM USA GROUP, INC.  
 1200 SUMMIT AVENUE, SUITE 600  
 FORT WORTH, TEXAS 76102  
 WWW.AECOM.COM  
 817.698.6770

60052528  
 R113BYR2.dwg

R. DEAN HAWN INTERESTS  
VOLUME 801, PAGE 130  
D.R.P.C.T.

POSSUM KINGDOM CONTROL  
MONUMENT NO. 16  
576'22".36"W, 11585.91'

**POINT OF BEGINNING PART 2**  
FOUND 1/2-INCH IRON PIPE  
N 7.010,013.00  
E 1,958,274.69

THE BRAZOS RIVER CONSERVATION AND RECLAMATION DISTRICT  
TRACT 25-2-49  
VOLUME 178, PAGE 464  
CALLED 216.40 ACRES  
D.R.P.C.T.

- LEGEND**
- = LEASE CORNER MARKER
  - = "AS NOTED"
  - OH = OVERHEAD LINES
  - ⊙ = WATER METER
  - △ = FLAG POLE
  - ⊠ = TELEPHONE PEDESTAL
  - ⊡ = POWER POLE
  - ⊕ = WATER VALVE
  - ⊖ = IRRIGATION CONTROL VALVE
  - ⊗ = FIRE HYDRANT
  - ⊘ = POST
  - ⊙ = ELECTRIC PEDESTAL
  - ⊚ = SIGN
  - ⊛ = MAIL BOX

200.00'

LEASE BLOCK R113  
AREA: 6-M  
6.2085 ACRES  
270,441 SQ. FT.  
INTERIOR BLOCK IMPROVEMENTS NOT SHOWN

LOT: 6 & 6A

LOT: 15  
AREA: 6-N

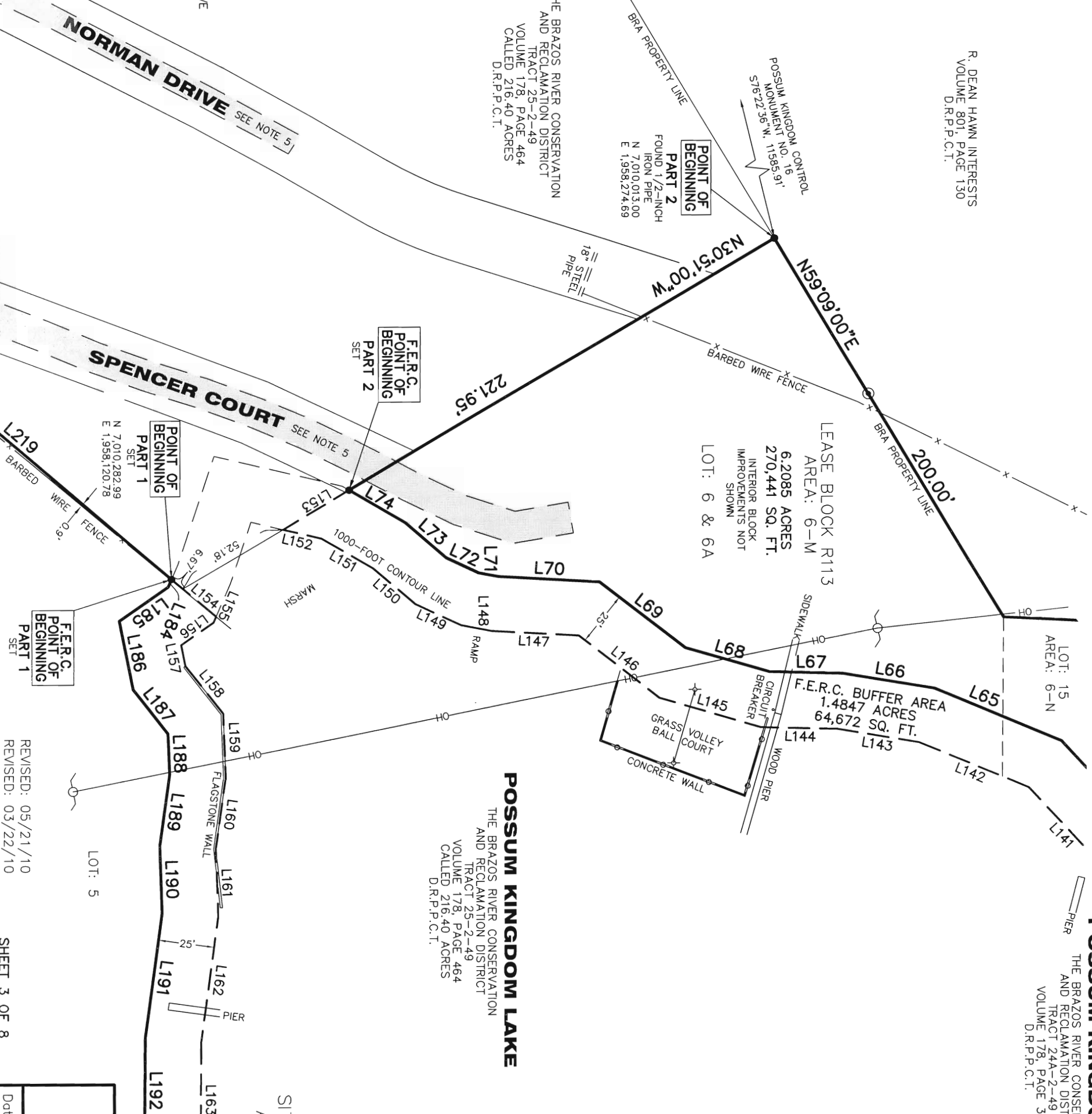
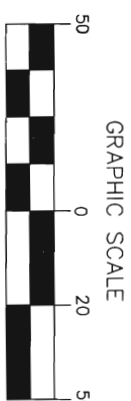
F.E.R.C. BUFFER AREA  
1.4847 ACRES  
64,672 SQ. FT.

**POSSUM KINGDOM LAKE**

THE BRAZOS RIVER CONSERVATION AND RECLAMATION DISTRICT  
TRACT 25-2-49  
VOLUME 178, PAGE 464  
CALLED 216.40 ACRES  
D.R.P.C.T.

**POSSUM KINGDOM LAKE**  
THE BRAZOS RIVER CONSERVATION AND RECLAMATION DISTRICT  
TRACT 24A-2-49  
VOLUME 178, PAGE 363  
D.R.P.C.T.

**J. POITEVENT SURVEY**  
ABSTRACT 1058



**NORMAN DRIVE** SEE NOTE 5

**SPENCER COURT** SEE NOTE 5

**POINT OF BEGINNING PART 1 SET**  
N 7.010,282.99  
E 1,958,120.78

**POINT OF BEGINNING PART 2 SET**

**POINT OF BEGINNING PART 1 SET**

REVISED: 05/21/10  
REVISED: 03/22/10

SHEET 3 OF 8

STANDARD LAND SURVEY  
OF  
**10.9748 ACRES**  
SITUATED IN TRACTS 24A-2-49 & 25-2-49  
AREA 6-M, LOTS 5, 5-A, 5-B, 6 & 6-A  
AREA 6-N, LOTS 8 - 15  
POSSUM KINGDOM LAKE  
J. POITEVENT SURVEY, ABSTRACT 1058  
HEIRS OF JAS. JOHNSON SURVEY  
ABSTRACT 264  
PALO PINTO COUNTY, TEXAS

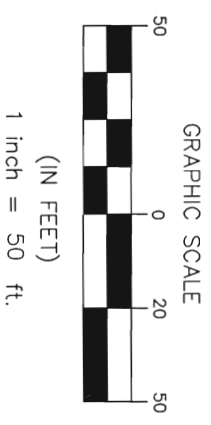
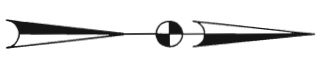
**AECOM**

AECOM USA GROUP, INC.  
1200 SUMMIT AVENUE, SUITE 600  
FORT WORTH, TEXAS 76102  
WWW.AECOM.COM  
817.698.6770

Date: 12/16/09 Project No. 60102581.02 60052528 R113ByR2.dwg

NO PART OR PARTS OF THIS DRAWING MAY BE REPRODUCED OR TRANSMITTED IN ANY WAY OR FORM (ELECTRONIC, MECHANICAL, PHOTOCOPYING, OR OTHERWISE) WITHOUT THE EXPRESS WRITTEN PERMISSION OF AECOM.

J. POITEVENT SURVEY  
ABSTRACT 1058

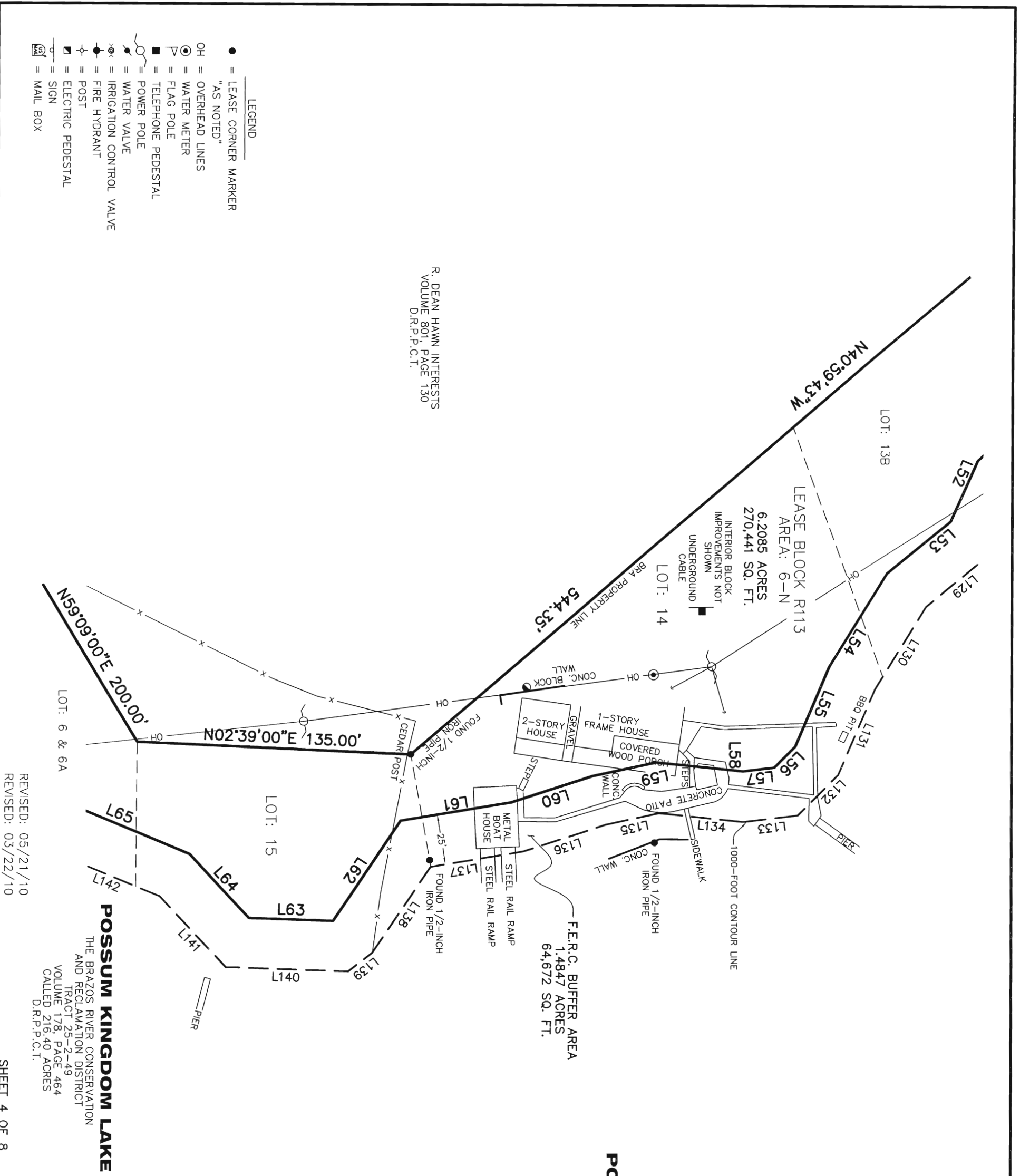


**POSSUM KINGDOM LAKE**  
THE BRAZOS RIVER CONSERVATION  
AND RECLAMATION DISTRICT  
TRACT 24A-2-49  
VOLUME 178, PAGE 363  
D.R.P.P.C.T.

STANDARD LAND SURVEY  
OF  
**10.9748 ACRES**  
SITUATED IN TRACTS 24A-2-49 & 25-2-49  
AREA 6-M, LOTS 5, 5-A, 5-B, 6 & 6-A  
AREA 6-N, LOTS 8 - 15  
POSSUM KINGDOM LAKE  
J. POITEVENT SURVEY, ABSTRACT 1058  
HEIRS OF JAS. JOHNSON SURVEY  
ABSTRACT 264  
PALO PINTO COUNTY, TEXAS

**AECOM**  
AECOM USA GROUP, INC.  
1200 SUMMIT AVENUE, SUITE 600  
FORT WORTH, TEXAS 76102  
WWW.AECOM.COM  
817.698.6770

Date: 12/16/09 Project No. 60102581.02 60052528 R113ByR2.dwg



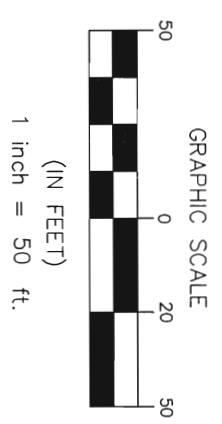
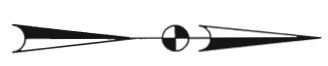
R. DEAN HAWN INTERESTS  
VOLUME 801, PAGE 130  
D.R.P.P.C.T.

- LEGEND**
- = LEASE CORNER MARKER "AS NOTED"
  - OH = OVERHEAD LINES
  - ⊙ = WATER METER
  - ▽ = FLAG POLE
  - = TELEPHONE PEDESTAL
  - ⊕ = POWER POLE
  - ⊙ = WATER VALVE
  - ⊙ = IRRIGATION CONTROL VALVE
  - ⊙ = FIRE HYDRANT
  - ⊕ = POST
  - ⊕ = ELECTRIC PEDESTAL
  - ⊕ = SIGN
  - ⊕ = MAIL BOX

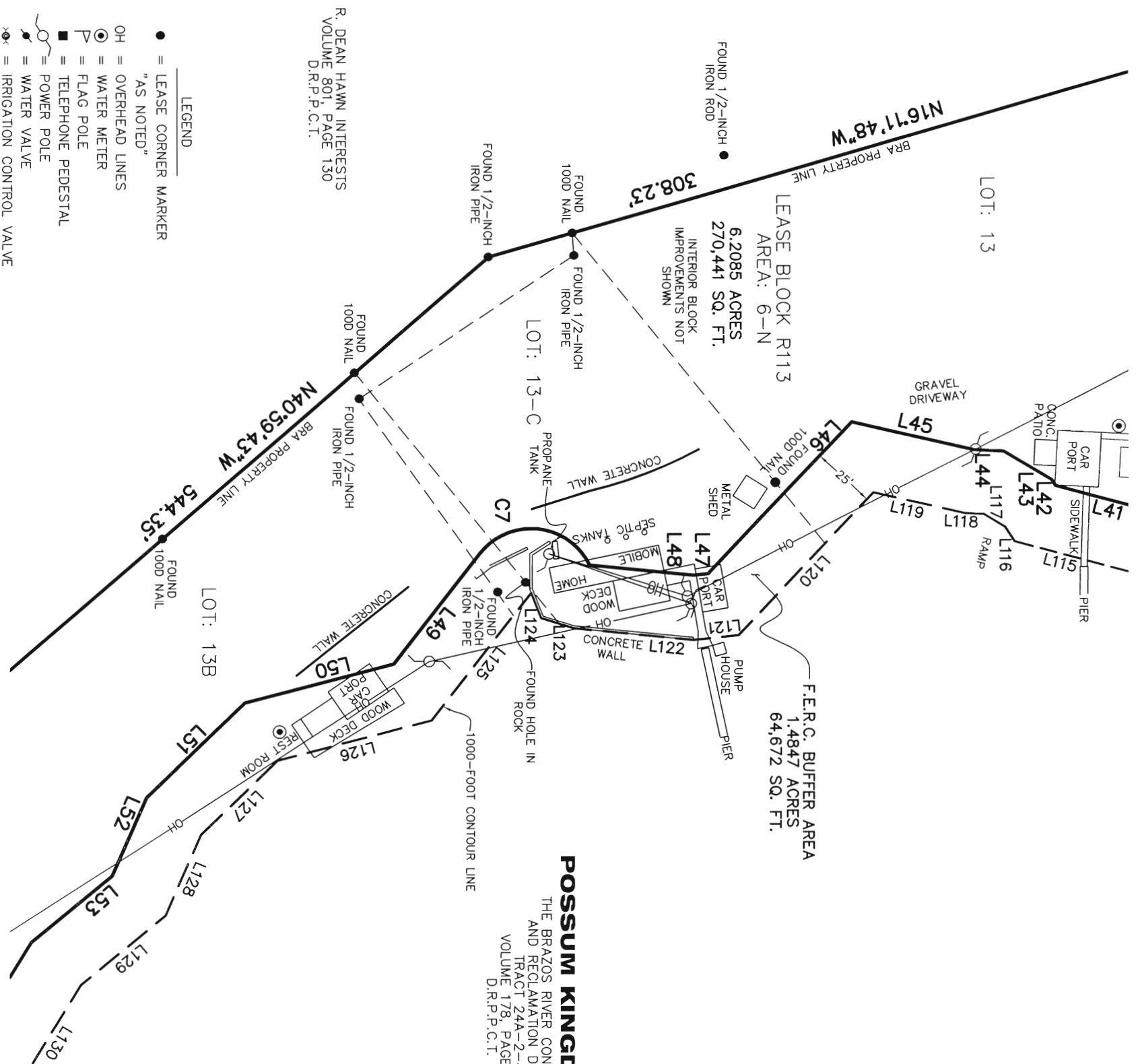
REVISED: 05/21/10  
REVISED: 03/22/10

NO PART OR PARTS OF THIS DRAWING MAY BE REPRODUCED OR RETRANSMITTED IN ANY WAY OR FORM (ELECTRONIC, MECHANICAL, PHOTOGRAPHING, OR OTHERWISE) WITHOUT THE EXPRESS WRITTEN PERMISSION OF AECOM.

**J. POITEVENT SURVEY  
ABSTRACT 1058**



**F.M. 1148**  
80-FOOT WIDE RIGHT-OF-WAY  
VOLUME 326, PAGE 525  
D.R.P.P.C.T.



**POSSUM KINGDOM LAKE**  
THE BRAZOS RIVER CONSERVATION  
AND RECLAMATION DISTRICT  
TRACT 24A-2-49  
VOLUME 178, PAGE 363  
D.R.P.P.C.T.

R. DEAN HAWN INTERESTS  
VOLUME 801, PAGE 130  
D.R.P.P.C.T.

- LEGEND**
- = LEASE CORNER MARKER  
"AS NOTED"
  - OH = OVERHEAD LINES
  - ⊙ = WATER METER
  - ▽ = FLAG POLE
  - = TELEPHONE PEDESTAL
  - ⊕ = POWER POLE
  - ⊗ = WATER VALVE
  - ⊘ = IRRIGATION CONTROL VALVE
  - ⊙ = FIRE HYDRANT
  - ⊙ = POST
  - ⊙ = ELECTRIC PEDESTAL
  - ⊙ = SIGN
  - ⊙ = MAIL BOX

REVISED: 05/21/10  
REVISED: 03/22/10

SHEET 5 OF 8

STANDARD LAND SURVEY  
OF  
**10.9748 ACRES**  
SITUATED IN TRACTS 24A-2-49 & 25-2-49  
AREA 6-M, LOTS 5, 5-A, 5-B, 6 & 6-A  
AREA 6-N, LOTS 8 - 15  
POSSUM KINGDOM LAKE  
J. POITEVENT SURVEY, ABSTRACT 1058  
HEIRS OF JAS. JOHNSON SURVEY  
ABSTRACT 264  
PALO PINTO COUNTY, TEXAS

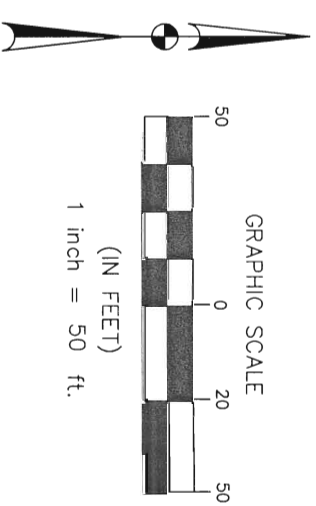
**AECOM**

AECOM USA GROUP, INC.  
1200 SUMMIT AVENUE, SUITE 600  
FORT WORTH, TEXAS 76102  
WWW.AECOM.COM  
817.698.6770

Date: 12/16/09 Project No. 60102581.02 60052528 R113B/R2.dwg

NO PART OF THIS DRAWING MAY BE REPRODUCED OR TRANSMITTED IN ANY FORM OR BY ANY MEANS, ELECTRONIC OR MECHANICAL, WITHOUT THE EXPRESS WRITTEN PERMISSION OF AECOM.

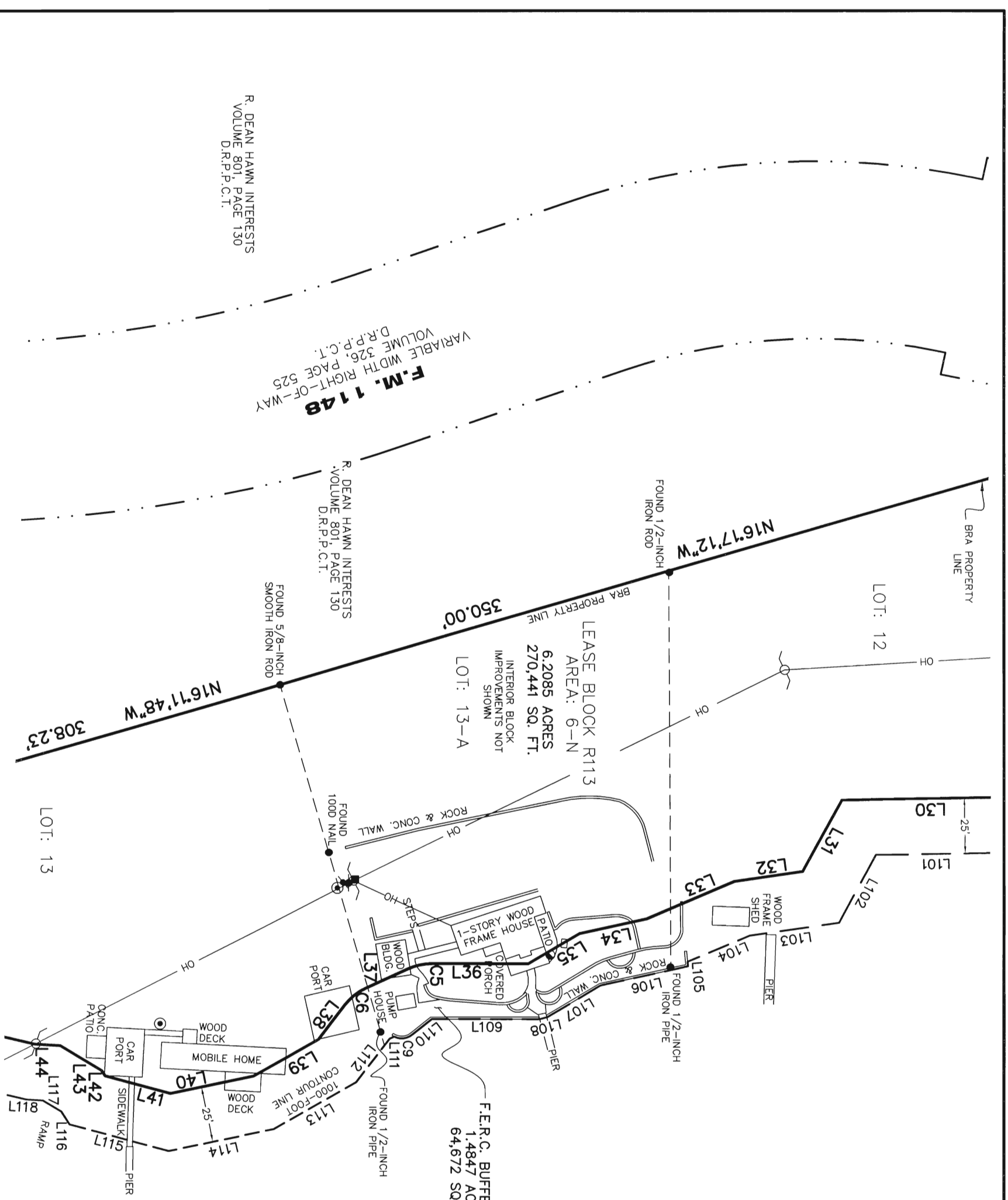
**J. POITEVENT SURVEY  
ABSTRACT 1058**



- LEGEND**
- = LEASE CORNER MARKER "AS NOTED"
  - OH = OVERHEAD LINES
  - ⊙ = WATER METER
  - ⊥ = FLAG POLE
  - = TELEPHONE PEDESTAL
  - ⊖ = POWER POLE
  - ⊕ = WATER VALVE
  - ⊗ = IRRIGATION CONTROL VALVE
  - ⊙ = FIRE HYDRANT
  - ⊕ = POST
  - ⊖ = ELECTRIC PEDESTAL
  - ⊙ = SIGN
  - ⊖ = MAIL BOX

**POSSUM KINGDOM LAKE**

THE BRAZOS RIVER CONSERVATION  
AND RECLAMATION DISTRICT  
TRACT 24A-2-49  
VOLUME 178, PAGE 363  
D.R.P.P.C.T.



R. DEAN HAWN INTERESTS  
VOLUME 801, PAGE 130  
D.R.P.P.C.T.

**F.M. 1148**  
VARIABLE WIDTH RIGHT-OF-WAY  
VOLUME 326, PAGE 525  
D.R.P.P.C.T.

R. DEAN HAWN INTERESTS  
VOLUME 801, PAGE 130  
D.R.P.P.C.T.

350.00'

308.23'

LOT: 13

F.E.R.C. BUFFER AREA  
1,4847 ACRES  
64,672 SQ. FT.

**STANDARD LAND SURVEY  
OF**

**10.9748 ACRES**

SITUATED IN TRACTS 24A-2-49 & 25-2-49  
AREA 6-M, LOTS 5, 5-A, 5-B, 6 & 6-A  
AREA 6-N, LOTS 8 - 15  
POSSUM KINGDOM LAKE  
J. POITEVENT SURVEY, ABSTRACT 1058  
HEIRS OF JAS. JOHNSON SURVEY  
ABSTRACT 264  
PALO PINTO COUNTY, TEXAS



AECOM USA GROUP, INC.  
1200 SUMMIT AVENUE, SUITE 600  
FORT WORTH, TEXAS 76102  
WWW.AECOM.COM  
817.698.6770

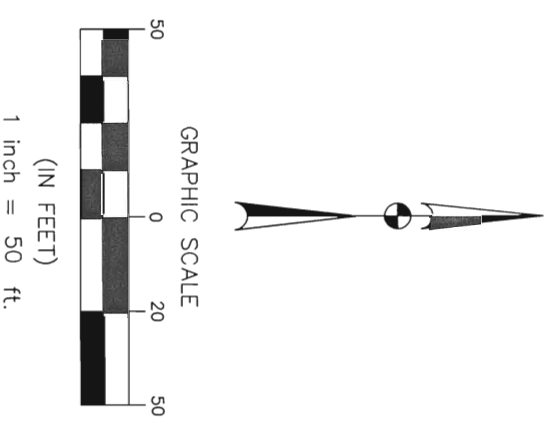
REVISED: 05/21/10  
REVISED: 03/22/10

SHEET 6 OF 8

Date: 12/16/09 Project No. 60102581.02 60052528 R113ByR2.dwg

NO PART OR PARTS OF THIS DRAWING MAY BE REPRODUCED OR TRANSMITTED IN ANY WAY OR FORM (ELECTRONIC, MECHANICAL, PHOTOCOPIING, OR OTHERWISE) WITHOUT THE EXPRESS WRITTEN PERMISSION OF AECOM.

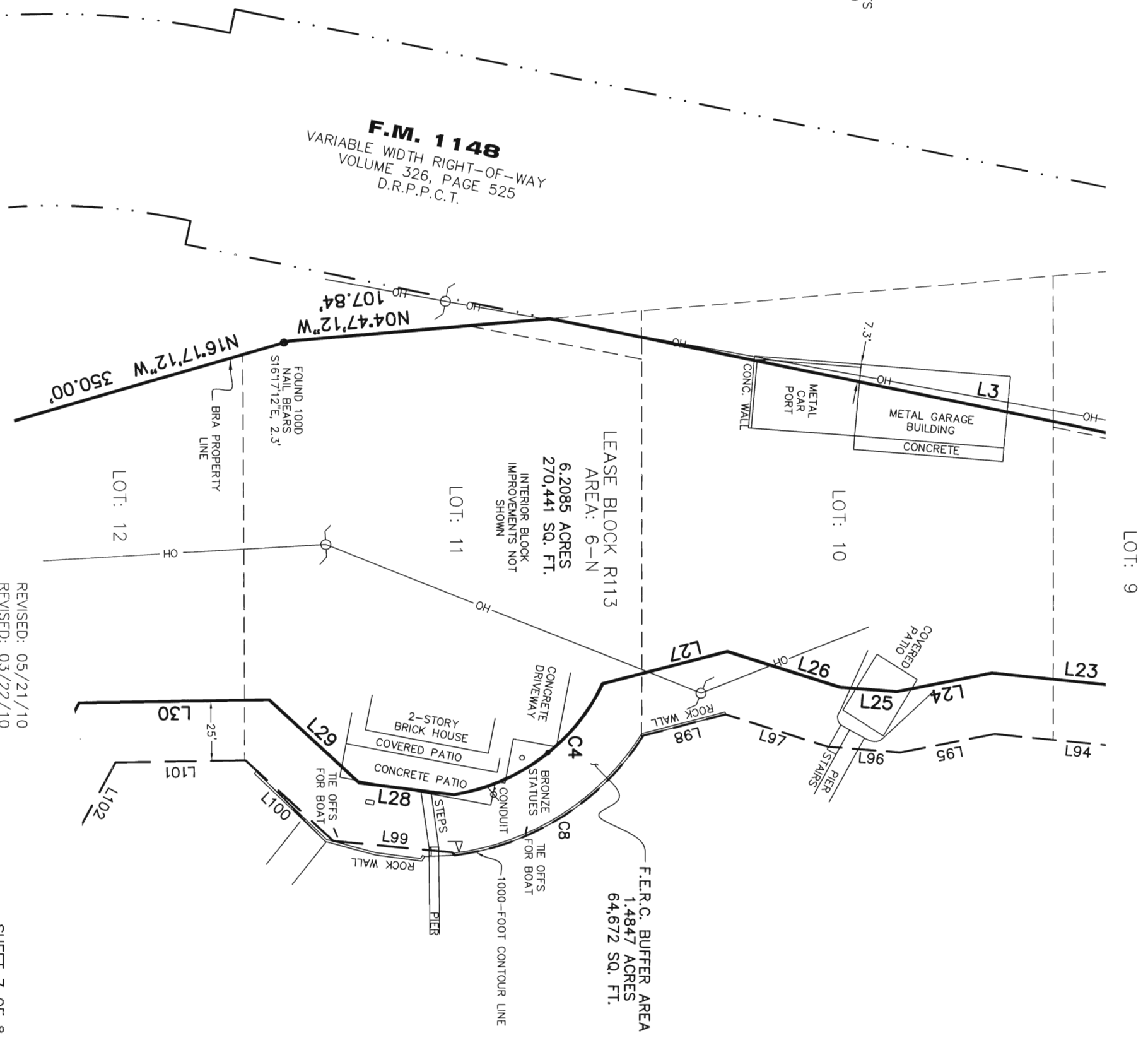
**J. POITEVENT SURVEY  
ABSTRACT 1058**



R. DEAN HAWN INTERESTS  
VOLUME 801, PAGE 130  
D.R.P.C.T.

**F.M. 1148**  
VARIABLE WIDTH RIGHT-OF-WAY  
VOLUME 326, PAGE 525  
D.R.P.P.C.T.

- LEGEND**
- = LEASE CORNER MARKER  
"AS NOTED"
  - OH = OVERHEAD LINES
  - = WATER METER
  - △ = FLAG POLE
  - = TELEPHONE PEDESTAL
  - = POWER POLE
  - ⊗ = WATER VALVE
  - ⊕ = IRRIGATION CONTROL VALVE
  - ⊖ = FIRE HYDRANT
  - ⊙ = POST
  - ⊚ = ELECTRIC PEDESTAL
  - ⊛ = SIGN
  - ⊜ = MAIL BOX



**POSSUM KINGDOM LAKE**  
THE BRAZOS RIVER CONSERVATION  
AND RECLAMATION DISTRICT  
TRACT 24A-2-49  
VOLUME 178, PAGE 363  
D.R.P.P.C.T.

**STANDARD LAND SURVEY  
OF  
10.9748 ACRES**

SITUATED IN TRACTS 24A-2-49 & 25-2-49  
AREA 6-M, LOTS 5, 5-A, 5-B, 6 & 6-A  
AREA 6-N, LOTS 8 - 15  
POSSUM KINGDOM LAKE  
J. POITEVENT SURVEY, ABSTRACT 1058  
HEIRS OF JAS. JOHNSON SURVEY  
ABSTRACT 264  
PALO PINTO COUNTY, TEXAS

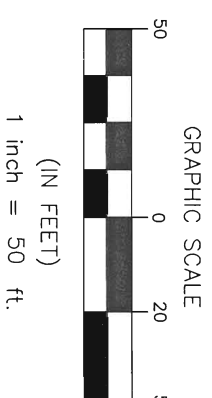
<b>AECOM</b>	Date: 12/16/09		60052528 R113ByR2.dwg
	Project No. 60102581.02		

AECOM USA GROUP, INC.  
1200 SUMMIT AVENUE, SUITE 600  
FORT WORTH, TEXAS 76102  
WWW.AECOM.COM  
817.698.6770

REVISED: 05/21/10  
REVISED: 03/22/10  
SHEET 7 OF 8

NO PART OF THIS DRAWING MAY BE REPRODUCED OR TRANSMITTED IN ANY FORM OR BY ANY MEANS, ELECTRONIC OR MECHANICAL, INCLUDING PHOTOCOPYING, RECORDING, OR BY ANY INFORMATION STORAGE AND RETRIEVAL SYSTEM, WITHOUT THE EXPRESS WRITTEN PERMISSION OF AECOM.

**J. POITTEVENT SURVEY  
ABSTRACT 1058**



**POSSUM KINGDOM LAKE**  
THE BRAZOS RIVER CONSERVATION  
AND RECLAMATION DISTRICT  
TRACT 24A-2-49  
VOLUME 178, PAGE 464  
D.R.P.C.T.

STANDARD LAND SURVEY  
OF  
**10.9748 ACRES**  
SITUATED IN TRACTS 24A-2-49 & 25-2-49  
AREA 6-M, LOTS 5, 5-A, 5-B, 6 & 6-A  
AREA 6-N, LOTS 8 - 15  
POSSUM KINGDOM LAKE  
J. POITTEVENT SURVEY, ABSTRACT 1058  
HEIRS OF JAS. JOHNSON SURVEY  
ABSTRACT 264  
PALO PINTO COUNTY, TEXAS

**AECOM**  
AECOM USA GROUP, INC.  
1200 SUMMIT AVENUE, SUITE 600  
FORT WORTH, TEXAS 76102  
WWW.AECOM.COM  
817.698.6770

Date: 12/16/09 Project No. 60102581.02  
60052528  
R113ByR2.dwg

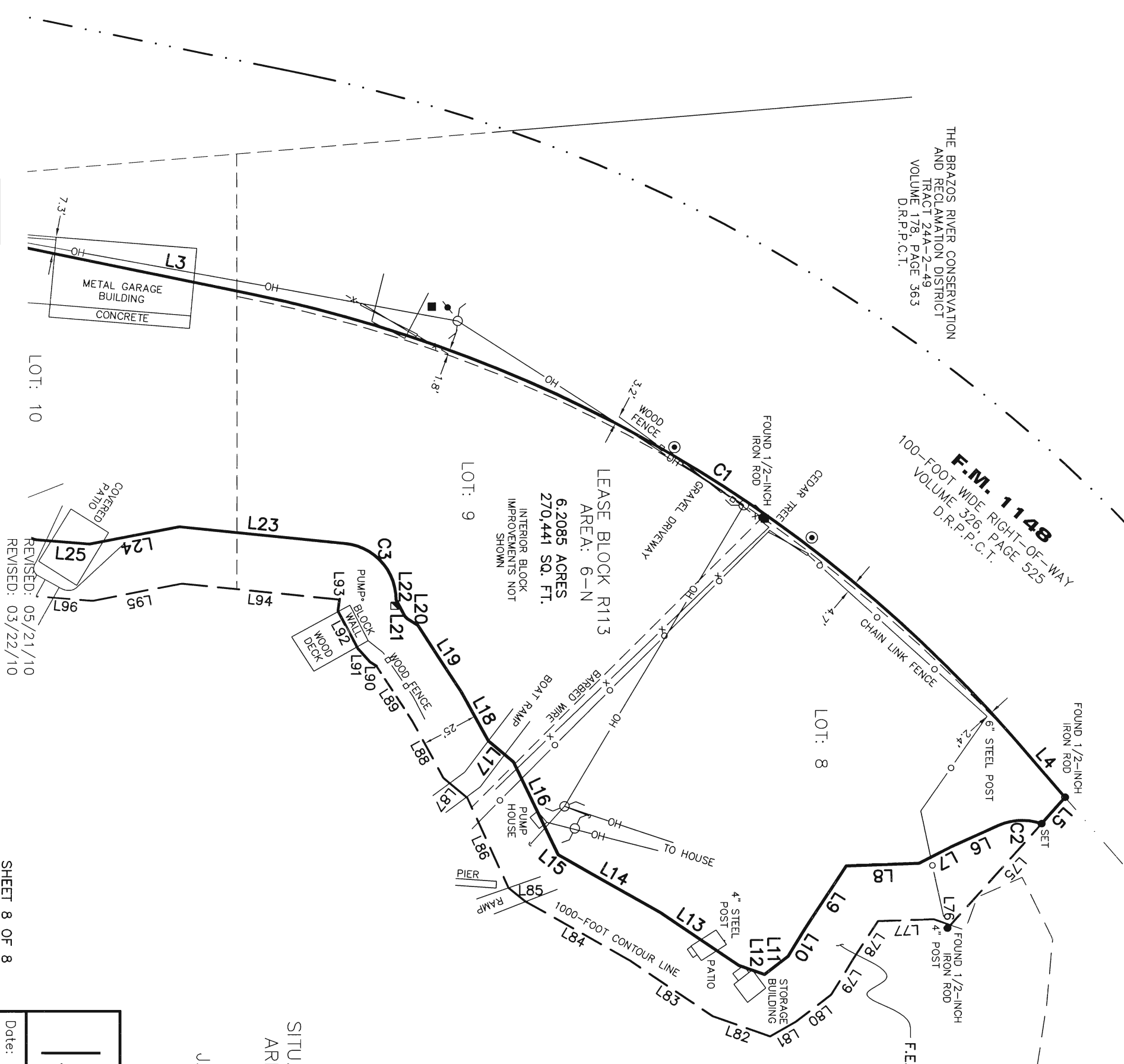
- LEGEND**
- = LEASE CORNER MARKER
  - = "AS NOTED"
  - OH = OVERHEAD LINES
  - ⊙ = WATER METER
  - △ = FLAG POLE
  - = TELEPHONE PEDESTAL
  - = POWER POLE
  - = WATER VALVE
  - ⊙ = IRRIGATION CONTROL VALVE
  - ⊙ = FIRE HYDRANT
  - ⊙ = POST
  - ⊙ = ELECTRIC PEDESTAL
  - ⊙ = SIGN
  - ⊙ = MAIL BOX

R. DEAN HAWN INTERESTS  
VOLUME 801, PAGE 130  
D.R.P.C.T.

THE BRAZOS RIVER CONSERVATION  
AND RECLAMATION DISTRICT  
TRACT 24A-2-49  
VOLUME 178, PAGE 363  
D.R.P.C.T.

**F.M. 1148**  
100-FOOT WIDE RIGHT-OF-WAY  
VOLUME 326, PAGE 525  
D.R.P.C.T.

F.E.R.C. BUFFER AREA  
1,4847 ACRES  
64,672 SQ. FT.



NO PART OR PARTS OF THIS DRAWING MAY BE REPRODUCED OR RETRANSMITTED IN ANY WAY OR FORM (ELECTRONIC, MECHANICAL, PHOTOCOPIING, OR OTHERWISE) WITHOUT THE EXPRESS WRITTEN PERMISSION OF AECOM.