

VICINITY MAP
NOT TO SCALE

- LEGEND
- = LEASE CORNER MARKER
"AS NOTED"
 - OH = OVERHEAD LINES
 - ⊕ = POWER POLE

ACREAGE TABLE
 LEASE BLOCK: 9.5612 ACRES
 F.E.R.C. BUFFER AREA: 2.3247 ACRES
 SURVEY BLOCK: 11.8859 ACRES TOTAL

CURVE TABLE					
CURVE	LENGTH	DELTA	RADIUS	CHORD BEARING	CHORD
C1	19.41	44°29'30"	25.00	S82°09'15"E	18.93'
C2	29.28	67°06'04"	25.00	S37°45'46"E	27.63'
C3	27.73	63°33'24"	25.00	S12°08'35"W	26.33'
C4	26.62	61°01'07"	25.00	S17°41'30"W	25.38'
C5	19.61	44°56'55"	25.00	S19°08'50"W	19.11'
C6	25.19	57°44'19"	25.00	S51°07'21"E	24.14'
C7	27.03	61°57'33"	25.00	S24°55'53"W	25.74'
C8	26.74	61°16'58"	25.00	S75°53'11"E	25.48'
C9	25.14	57°36'25"	25.00	S29°10'10"W	24.09'
C10	35.96	82°24'23"	25.00	S55°42'29"E	32.94'
C11	42.19	96°41'33"	25.00	S40°31'42"W	37.36'
C12	37.12	85°03'58"	25.00	S74°20'22"E	33.80'
C13	21.15	48°28'05"	25.00	S10°57'19"W	20.52'
C14	6.56	15°02'14"	25.00	S83°43'51"W	6.54'
C15	6.95	74°26'52"	5.35	S26°28'55"E	6.47'
C16	8.62	68°52'04"	7.17	N54°29'57"W	8.11'
C17	4.19	59°29'05"	4.04	N26°36'58"E	4.00'
C18	18.63	23°51'22"	44.75	S46°37'39"W	18.50'

NOTES:

- 1) BEARINGS AND COORDINATES SHOWN HEREON ARE BASED ON THE NORTH AMERICAN DATUM OF 1983, TEXAS COORDINATE SYSTEM, NORTH CENTRAL ZONE (4202).
- 2) 1,000-FOOT CONTOUR ELEVATION OF POSSUM KINGDOM LAKE IS DETERMINED BASED ON MEASUREMENTS FROM THE TOP OF THE EXISTING SPILLWAY CREST GATES AT THE MORRIS SHEPPARD DAM BEING AT ELEVATION 1,000- FEET ABOVE MEAN SEA LEVEL AS NOTED IN FEDERAL POWER COMMISSION REPORT PROJECT NO. 1490 - TEXAS ON JUNE 2, 1938.
- 3) SET = 5/8" IRON ROD W/CAP STAMPED "AECOM" SET; D.R.P.P.C.T.= DEED RECORDS, PALO PINTO COUNTY, TEXAS; P.R.P.P.C.T.= PLAT RECORDS, PALO PINTO COUNTY, TEXAS; F.E.R.C.= FEDERAL ENERGY REGULATORY COMMISSION; J.R.P.P.C.T.= JUDGMENT RECORDS, PALO PINTO COUNTY, TEXAS.
- 4) METES AND BOUNDS DESCRIPTIONS TO ACCOMPANY THIS SURVEY.
- 5) LOCATION OF ROAD PROVIDED BY LINK FIELD SERVICES, DATED OCTOBER 27, 2009, AS SHOWN SHADED HEREON.

SURVEYORS CERTIFICATE

TO: BRAZOS RIVER AUTHORITY, PATTERSON PK LAND PARTNERSHIP, LTD., AND HERITAGE TITLE COMPANY OF AUSTIN, INC.

I, MUNIR ODHWANI, A REGISTERED PROFESSIONAL LAND SURVEYOR IN THE STATE OF TEXAS, REGISTRATION NUMBER 5996, HEREBY STATE THAT A SURVEY OF THE REAL PROPERTY DESCRIBED IN SEPARATE LEGAL DESCRIPTION AS NOTED HEREON, WAS ACTUALLY MADE UPON THE GROUND UNDER MY DIRECTION AND SUPERVISION, AND THAT TO THE BEST OF MY PROFESSIONAL KNOWLEDGE AND BELIEF, THE INFORMATION SHOWN HEREON IS CORRECT AS DETERMINED BY SAID SURVEY.

THIS SURVEY SUBSTANTIALLY COMPLIES WITH THE CURRENT TEXAS SOCIETY OF PROFESSIONAL SURVEYORS STANDARDS AND SPECIFICATIONS FOR A CATEGORY 1B, CONDITION II SURVEY.

Munir Odhwani

 MUNIR ODHWANI

REGISTERED PROFESSIONAL LAND SURVEYOR
 TEXAS REGISTRATION NO. 5996

DATE: FEBRUARY 12, 2010



STANDARD LAND SURVEY
 OF
11.8859 ACRES
 SITUATED IN TRACTS 18-3-1 & 20-3-1
 AREA 6-J, LOTS 1 THROUGH 10,
 11-S, 11-N, 12-S, 12-N & 12-1
 & AREA 6-I, LOT 1-D
 POSSUM KINGDOM LAKE
 HEIRS OF JOHN HAYS SURVEY
 ABSTRACT 222 &
 B. S. & F. SURVEY, ABSTRACT 107
 PALO PINTO COUNTY, TEXAS

AECOM	AECOM USA GROUP, INC. 1200 SUMMIT AVENUE, SUITE 600 FORT WORTH, TEXAS 76102 WWW.AECOM.COM 817.698.6770	
	Date: 01/15/10	Project No. 60052528.103

REVISED: 06/09/10
 SHEET 1 OF 11

LINE TABLE		
LINE	BEARING	DISTANCE
L1	S59°54'30"E	5.73'
L2	S22°57'08"E	16.32'
L3	S49°30'27"E	24.07'
L4	S52°52'23"E	22.20'
L5	S28°33'21"W	2.47'
L6	S05°08'09"W	34.55'
L7	S19°23'34"W	14.46'
L8	S11°22'39"W	18.15'
L9	S09°29'48"E	32.63'
L10	S26°21'25"E	24.32'
L11	S14°46'54"E	19.31'
L12	S18°41'41"E	23.34'
L13	S05°06'26"E	27.05'
L14	S01°55'03"E	16.70'
L15	S07°58'12"E	9.93'
L16	S17°59'08"W	26.53'
L17	S21°42'53"E	16.06'
L18	S05°38'46"E	24.90'
L19	S13°11'01"E	28.38'
L20	S16°09'28"W	27.88'
L21	S16°17'45"W	48.36'
L22	S04°12'44"E	24.09'
L23	S71°18'48"E	37.77'
L24	N83°06'09"E	0.12'
L25	S71°35'42"W	24.71'
L26	S51°01'22"W	30.45'
L27	S07°09'40"W	22.47'
L28	S43°55'17"W	3.30'
L29	S19°38'07"E	26.32'
L30	S56°58'34"E	39.07'
L31	S15°40'55"E	51.93'
L32	S57°33'49"E	19.54'
L33	S25°32'04"W	27.42'
L34	S03°17'23"W	38.96'
L35	S02°34'31"E	27.87'
L36	S01°06'48"E	51.16'
L37	S10°50'01"E	37.45'
L38	S51°16'55"E	15.34'
L39	S08°17'57"W	19.49'
L40	S17°48'21"E	44.47'
L41	S48°18'59"E	1.88'
L42	S48°12'04"W	13.29'
L43	S12°49'03"E	33.00'
L44	S01°04'11"E	39.42'
L45	S08°39'36"E	35.86'
L46	S25°22'13"E	10.37'
L47	S34°47'02"W	2.29'
L48	S08°12'20"E	51.32'
L49	S12°28'13"E	41.62'
L50	S25°57'05"E	42.88'
L51	S32°07'25"E	26.08'
L52	S39°19'34"E	37.42'
L53	S74°38'18"E	18.71'
L54	S27°04'46"E	5.58'
L55	S03°19'38"E	15.44'
L56	S05°24'53"W	34.04'
L57	S00°09'39"E	13.93'
L58	S22°15'12"E	69.97'
L59	S79°59'31"E	16.20'
L60	N87°41'16"E	26.26'

LINE TABLE		
LINE	BEARING	DISTANCE
L61	S22°36'18"E	20.44'
L62	S56°26'46"E	24.51'
L63	S43°53'09"W	28.55'
L64	S55°54'40"W	31.28'
L65	S06°02'53"E	19.08'
L66	S18°22'39"E	26.74'
L67	S14°22'14"E	24.08'
L68	S29°13'39"E	25.23'
L69	S45°14'42"E	21.05'
L70	N73°28'20"E	29.07'
L71	N72°50'44"E	26.61'
L72	S09°31'06"E	16.99'
L73	S13°32'45"E	12.92'
L74	S07°50'16"E	15.05'
L75	S78°32'39"W	21.76'
L76	S57°58'23"W	43.58'
L77	S00°21'58"W	38.48'
L78	S14°30'18"E	27.73'
L79	N83°05'18"E	17.40'
L80	N88°52'24"E	31.44'
L81	S89°17'14"E	16.18'
L82	S03°56'41"W	28.57'
L83	S07°38'03"W	0.72'
L84	S59°14'10"W	12.87'
L85	S57°34'24"W	25.34'
L86	S61°03'26"W	33.61'
L87	S07°46'25"W	38.84'
L88	S01°22'55"E	44.09'
L89	S19°07'52"E	41.47'
L90	S20°42'57"E	33.41'
L91	S68°50'12"E	69.79'
L92	N81°45'02"E	35.09'
L93	S79°06'27"E	14.64'
L94	S15°12'16"E	13.31'
L95	S05°43'40"W	15.43'
L96	S53°58'35"W	11.31'
L97	S68°07'56"W	27.08'
L98	S88°52'30"W	14.02'
L99	S07°49'04"E	38.26'
L100	S23°19'07"E	29.21'
L101	S36°19'36"E	30.42'
L102	S88°47'59"E	39.64'
L103	N62°25'58"E	42.04'
L104	S68°50'53"E	11.07'
L105	S50°02'28"E	51.50'
L106	S57°27'23"E	3.69'
L107	S28°19'22"E	18.13'
L108	S31°48'23"E	15.22'
L109	N82°26'46"E	9.10'
L110	S22°51'42"E	22.76'
L111	S06°19'22"E	26.68'
L112	S05°34'10"W	31.66'
L113	S19°08'47"E	19.74'
L114	S16°36'17"E	53.93'
L115	S05°56'00"E	28.45'
L116	S35°11'21"W	8.82'
L117	S13°16'45"E	81.08'
L118	S85°42'44"E	17.88'
L119	S19°40'49"W	26.82'
L120	S13°27'10"W	19.27'

LINE TABLE		
LINE	BEARING	DISTANCE
L121	S03°45'41"W	11.31'
L122	S14°22'19"W	24.37'
L123	S78°33'15"W	10.53'
L124	S71°44'17"W	15.18'
L125	S68°01'50"W	2.58'
L126	S76°12'42"W	15.41'
L127	S80°13'50"W	6.54'
L128	S83°29'53"W	27.71'
L129	S86°08'05"W	18.24'
L130	S42°54'32"W	27.81'
L131	S05°24'14"W	4.35'
L132	S80°22'27"W	40.24'
L133	N48°41'48"E	38.32'
L134	S79°04'00"E	4.68'
L135	S39°10'59"E	15.92'
L136	S22°57'08"E	18.86'
L137	S49°30'27"E	17.44'
L138	S52°52'23"E	22.91'
L139	S62°56'35"E	19.85'
L140	S28°33'21"W	22.31'
L141	S05°08'09"W	32.50'
L142	S19°23'34"W	15.83'
L143	S11°22'39"W	11.80'
L144	S09°29'48"E	24.32'
L145	S26°21'25"E	23.15'
L146	S14°46'54"E	20.99'
L147	S18°41'41"E	25.46'
L148	S05°06'26"E	30.72'
L149	S01°55'03"E	16.08'
L150	S07°58'12"E	14.37'
L151	S17°59'08"W	23.26'
L152	S21°42'53"E	10.56'
L153	S05°38'46"E	26.78'
L154	S13°11'01"E	33.28'
L155	S16°09'28"W	34.45'
L156	S16°17'45"W	43.87'
L157	S04°12'44"E	19.56'
L158	S71°18'48"E	32.09'
L159	N83°06'09"E	23.68'
L160	S89°25'47"E	28.53'
L161	S77°12'17"E	22.21'
L162	S57°18'54"E	19.00'
L163	S08°48'18"E	6.13'
L164	S62°03'00"W	11.18'
L165	S61°39'39"W	22.81'
L166	S72°13'26"W	23.52'
L167	S79°15'22"W	26.10'
L168	S71°35'42"W	27.82'
L169	S51°01'22"W	15.84'
L170	S07°09'40"W	20.71'
L171	S43°55'17"W	11.61'
L172	S19°38'07"E	17.87'
L173	S56°58'34"E	21.27'
L174	S75°33'13"E	15.99'
L175	S89°58'43"E	45.62'
L176	S83°49'38"E	29.12'
L177	S22°17'35"W	7.16'
L178	S86°10'48"W	26.52'
L179	S83°48'13"W	18.67'
L180	S61°30'52"W	9.97'

LINE TABLE		
LINE	BEARING	DISTANCE
L181	S41°44'59"W	16.47'
L182	S15°40'55"E	26.49'
L183	S57°33'49"E	24.43'
L184	S74°18'40"E	17.16'
L185	S85°55'46"E	32.63'
L186	S78°11'14"E	42.14'
L187	S80°55'24"E	43.30'
L188	S88°53'11"E	14.92'
L189	S07°47'03"W	13.98'
L190	N87°29'34"W	27.82'
L191	N82°22'35"W	27.31'
L192	S84°55'51"W	38.81'
L193	N88°58'25"W	30.76'
L194	N83°10'45"W	28.45'
L195	S25°32'04"W	14.65'
L196	S03°17'23"W	32.76'
L197	S02°34'31"E	26.91'
L198	S01°06'48"E	49.36'
L199	S10°50'01"E	26.12'
L200	S51°16'55"E	20.44'
L201	S08°17'57"W	28.00'
L202	S17°48'21"E	31.85'
L203	S48°18'59"E	30.80'
L204	S77°47'48"W	15.55'
L205	S48°12'04"W	28.67'
L206	S12°49'03"E	35.57'
L207	S01°04'11"E	40.33'
L208	S08°39'36"E	30.53'
L209	S25°22'13"E	8.69'
L210	S69°07'54"E	13.21'
L211	S33°02'22"E	8.75'
L212	S86°16'21"W	12.89'
L213	S34°47'02"W	4.98'
L214	S08°12'20"E	40.55'
L215	S12°28'13"E	37.74'
L216	S25°57'05"E	38.58'
L217	S32°07'25"E	23.15'
L218	S39°19'34"E	27.89'
L219	S74°38'18"E	21.77'
L220	S27°04'46"E	17.58'
L221	S81°01'35"E	15.28'
L222	N83°15'50"E	32.00'
L223	N86°16'35"E	33.15'
L224	S17°06'10"E	4.46'
L225	S67°34'15"W	32.37'
L226	S79°58'07"W	42.77'
L227	S63°39'49"W	14.80'
L228	S03°19'38"E	17.35'
L229	S05°24'53"W	34.74'
L230	S00°09'39"E	7.83'
L231	S22°15'12"E	65.09'
L232	S79°59'31"E	13.50'
L233	N87°41'16"E	34.45'
L234	S70°14'11"E	8.28'
L235	S22°36'18"E	26.93'
L236	S56°26'46"E	21.01'
L237	S68°01'29"E	14.94'
L238	S79°18'52"E	15.08'
L239	S00°58'46"W	7.90'
L240	S70°50'31"W	14.13'

LINE TABLE		
LINE	BEARING	DISTANCE
L241	S43°53'09"W	51.97'
L242	S55°54'40"W	33.91'
L243	S06°02'53"E	16.38'
L244	S18°22'39"E	24.91'
L245	S14°22'14"E	21.69'
L246	S29°13'39"E	18.46'
L247	S45°14'42"E	17.54'
L248	N73°28'20"E	28.93'
L249	N72°50'44"E	33.64'
L250	N68°28'36"E	10.94'
L251	S84°18'47"E	8.45'
L252	S23°42'09"E	9.66'
L253	S09°31'06"E	32.53'
L254	S13°32'45"E	13.29'
L255	S07°50'16"E	28.80'
L256	S21°05'16"W	12.60'
L257	S75°20'40"W	5.79'
L258	S78°32'39"W	28.83'
L259	S57°58'23"W	39.04'
L260	S00°21'58"W	35.22'
L261	S14°30'18"E	24.46'
L262	N83°05'18"E	18.66'
L263	N88°52'24"E	33.10'
L264	S89°17'14"E	36.25'
L265	N83°02'39"E	6.89'
L266	S03°56'41"W	56.75'
L267	S07°38'03"W	13.61'
L268	S59°14'10"W	24.59'
L269	S57°34'24"W	25.74'
L270	S61°03'26"W	21.83'
L271	S07°46'25"W	24.29'
L272	S01°22'55"E	38.19'
L273	S19°07'52"E	37.22'
L274	S20°42'57"E	21.91'
L275	S68°50'12"E	52.07'
L276	N81°45'02"E	32.74'
L277	S79°06'27"E	34.45'
L278	S15°12'16"E	33.52'
L279	S05°43'40"W	31.24'
L280	S53°58'35"W	25.61'

LINE TABLE		
LINE	BEARING	DISTANCE
L281	S68°07'56"W	34.75'
L282	S88°52'30"W	18.59'
L283	S07°49'04"E	34.85'
L284	S23°19'07"E	22.96'
L285	S36°19'36"E	15.25'
L286	S88°47'59"E	20.91'
L287	N62°25'58"E	37.84'
L288	N71°52'54"E	10.81'
L289	S68°50'53"E	24.16'
L290	S50°02'28"E	54.02'
L291	S57°27'23"E	8.57'
L292	S28°19'22"E	23.87'
L293	S31°48'23"E	14.46'
L294	N60°28'14"E	3.76'
L295	N82°26'46"E	23.70'
L296	S56°19'11"E	16.19'
L297	S22°51'42"E	34.40'
L298	S06°19'22"E	32.92'
L299	S05°34'10"W	28.79'
L300	S19°08'47"E	14.82'
L301	S16°36'17"E	56.82'
L302	S05°56'00"E	40.17'
L303	S35°11'21"W	18.20'
L304	S13°16'45"E	62.77'
L305	S85°42'44"E	12.48'
L306	S54°29'32"E	5.33'
L307	S89°26'07"E	17.15'
L308	S58°34'00"W	9.14'
L309	S19°40'49"W	22.87'
L310	S13°27'10"W	15.79'
L311	S03°45'41"W	11.51'
L312	S14°22'19"W	25.91'
L313	S61°30'23"E	4.11'
L314	S23°29'11"W	11.58'
L315	S80°22'27"W	145.58'

STANDARD LAND SURVEY
OF

11.8859 ACRES

SITUATED IN TRACTS 18-3-1 & 20-3-1
AREA 6-J, LOTS 1 THROUGH 10,
11-S, 11-N, 12-S, 12-N & 12-1
& AREA 6-I, LOT 1-D
POSSUM KINGDOM LAKE
HEIRS OF JOHN HAYS SURVEY
ABSTRACT 222 &
B. S. & F. SURVEY, ABSTRACT 107

HEIRS OF JOHN HAYS SURVEY
ABSTRACT 222

FOX HOLLOW FARMS SUBDIVISION
VOLUME 5, PAGE 15
P.R.P.P.C.T.

B. S. & F. SURVEY
ABSTRACT 107

DANNY GOLDSMITH
VOLUME 1162, PAGE 776
D.R.P.P.C.T.

LOT 1

9.5612 ACRES
416,487 SQ. FT.

LEASE BLOCK R101
AREA: 6-J

LEASE BLOCK R101
AREA: 6-I

LOT 1-D

THE BRAZOS RIVER CONSERVATION
AND RECLAMATION DISTRICT
TRACT 18-3-1
CALLED 266.57 ACRES
VOLUME 180, PAGE 524
D.R.P.P.C.T.

POSSUM KINGDOM LAKE

THE BRAZOS RIVER CONSERVATION
AND RECLAMATION DISTRICT
TRACT 18-3-1
CALLED 266.57 ACRES
VOLUME 180, PAGE 524
D.R.P.P.C.T.

F.E.R.C. BUFFER AREA
2.3247 ACRES
101,265 SQ. FT.

STANDARD LAND SURVEY
OF

11.8859 ACRES

SITUATED IN TRACTS 18-3-1 & 20-3-1
AREA 6-J, LOTS 1 THROUGH 10,
11-S, 11-N, 12-S, 12-N & 12-1
& AREA 6-I, LOT 1-D
POSSUM KINGDOM LAKE
HEIRS OF JOHN HAYS SURVEY
ABSTRACT 222 &
B. S. & F. SURVEY, ABSTRACT 107
PALO PINTO COUNTY, TEXAS

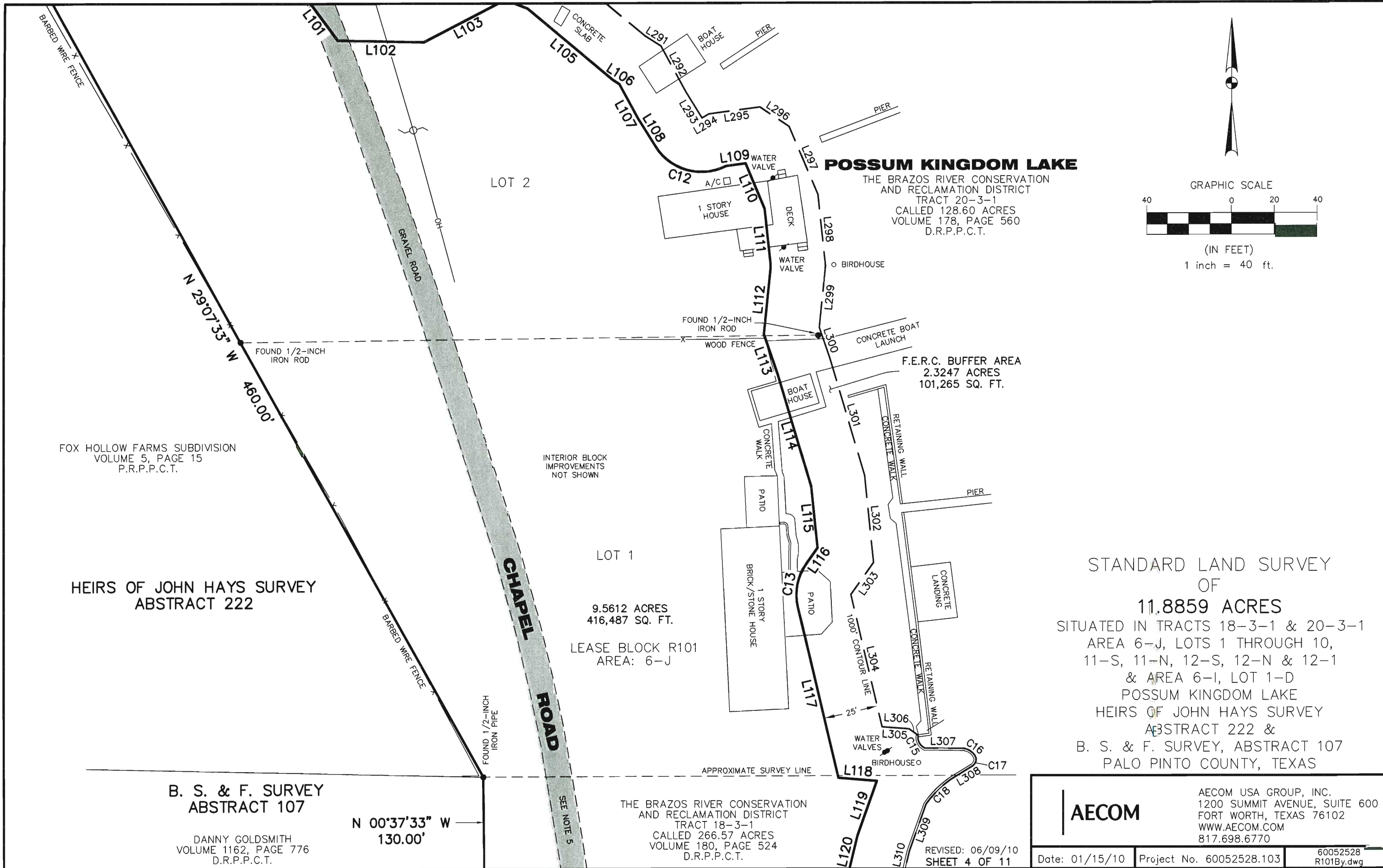
AECOM

AECOM USA GROUP, INC.
1200 SUMMIT AVENUE, SUITE 600
FORT WORTH, TEXAS 76102
WWW.AECOM.COM
817.698.6770

REVISED: 06/09/10
SHEET 3 OF 11

Date: 01/15/10 Project No. 60052528.103

60052528
R101By.dwg



STANDARD LAND SURVEY
 OF
11.8859 ACRES
 SITUATED IN TRACTS 18-3-1 & 20-3-1
 AREA 6-J, LOTS 1 THROUGH 10,
 11-S, 11-N, 12-S, 12-N & 12-1
 & AREA 6-I, LOT 1-D
 POSSUM KINGDOM LAKE
 HEIRS OF JOHN HAYS SURVEY
 ABSTRACT 222 &
 B. S. & F. SURVEY, ABSTRACT 107
 PALO PINTO COUNTY, TEXAS

AECOM	AECOM USA GROUP, INC. 1200 SUMMIT AVENUE, SUITE 600 FORT WORTH, TEXAS 76102 WWW.AECOM.COM 817.698.6770	
	Date: 01/15/10	Project No. 60052528.103

THE BRAZOS RIVER CONSERVATION
 AND RECLAMATION DISTRICT
 TRACT 18-3-1
 CALLED 266.57 ACRES
 VOLUME 180, PAGE 524
 D.R.P.P.C.T.

FOX HOLLOW FARMS SUBDIVISION
 VOLUME 5, PAGE 15
 P.R.P.P.C.T.

HEIRS OF JOHN HAYS SURVEY
 ABSTRACT 222

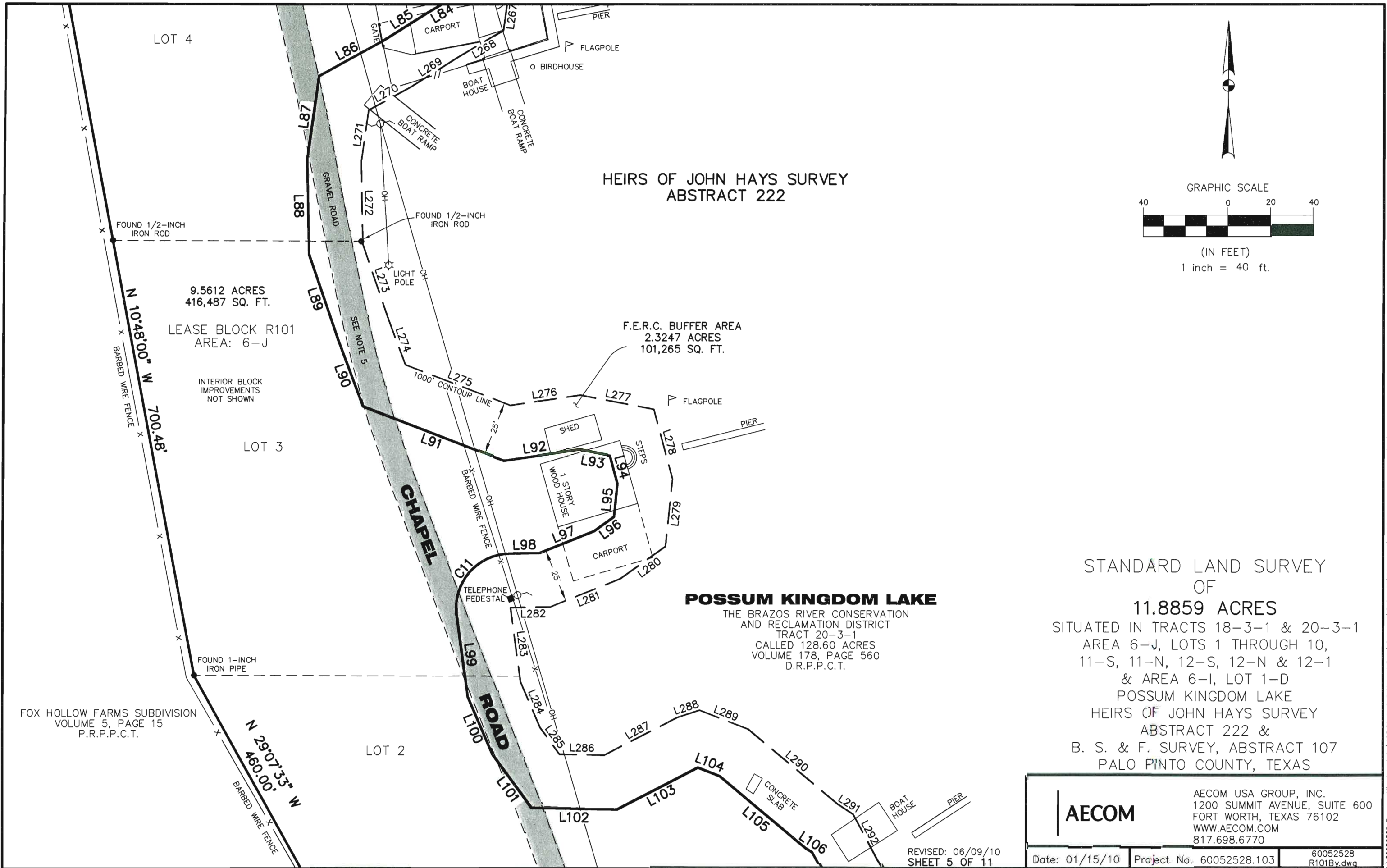
B. S. & F. SURVEY
 ABSTRACT 107

 DANNY GOLDSMITH
 VOLUME 1162, PAGE 776
 D.R.P.P.C.T.

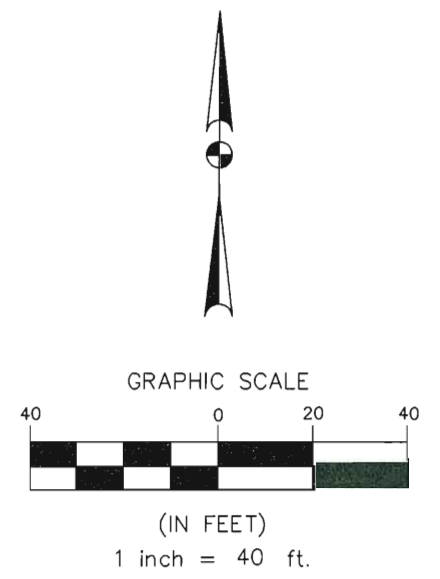
N 00°37'33" W
 130.00'

NO PART OR PARTS OF THIS DRAWING MAY BE REPRODUCED OR RETRANSMITTED IN ANY WAY OR FORM
 (ELECTRONIC, MECHANICAL, PHOTOCOPIING, OR OTHERWISE) WITHOUT THE EXPRESS WRITTEN PERMISSION OF AECOM.

J:\60052528_Possum Kingdom Lake\102.01_Assimilation of Data\Group\11\10110101.dwg\DRAWINGS\60052528_R101By.dwg 1/16/2010 12:10:51 PM CST



HEIRS OF JOHN HAYS SURVEY
ABSTRACT 222



9.5612 ACRES
416,487 SQ. FT.
LEASE BLOCK R101
AREA: 6-J
INTERIOR BLOCK
IMPROVEMENTS
NOT SHOWN

F.E.R.C. BUFFER AREA
2.3247 ACRES
101,265 SQ. FT.

POSSUM KINGDOM LAKE
THE BRAZOS RIVER CONSERVATION
AND RECLAMATION DISTRICT
TRACT 20-3-1
CALLED 128.60 ACRES
VOLUME 178, PAGE 560
D.R.P.P.C.T.

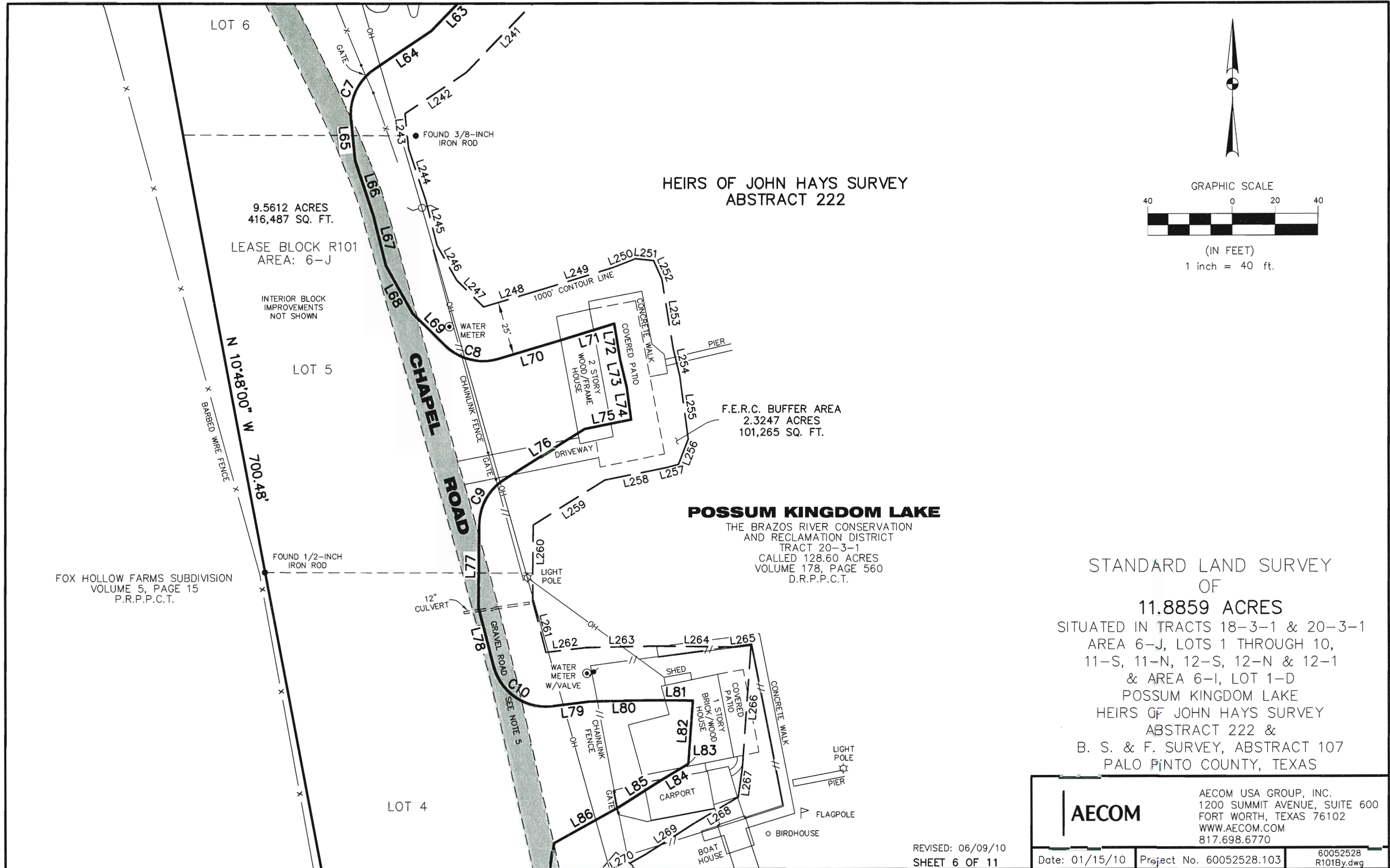
STANDARD LAND SURVEY
OF
11.8859 ACRES
SITUATED IN TRACTS 18-3-1 & 20-3-1
AREA 6-J, LOTS 1 THROUGH 10,
11-S, 11-N, 12-S, 12-N & 12-1
& AREA 6-I, LOT 1-D
POSSUM KINGDOM LAKE
HEIRS OF JOHN HAYS SURVEY
ABSTRACT 222 &
B. S. & F. SURVEY, ABSTRACT 107
PALO PINTO COUNTY, TEXAS

FOX HOLLOW FARMS SUBDIVISION
VOLUME 5, PAGE 15
P.R.P.P.C.T.

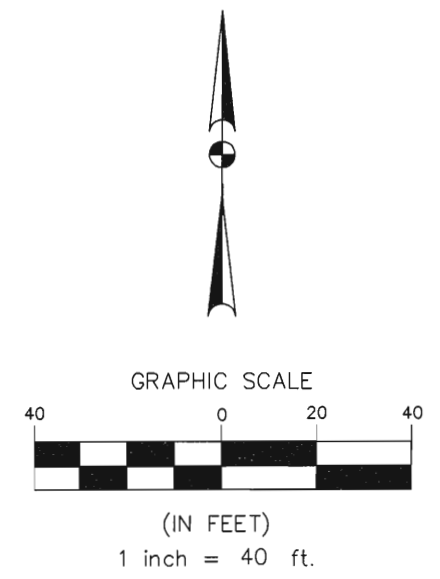
AECOM	AECOM USA GROUP, INC. 1200 SUMMIT AVENUE, SUITE 600 FORT WORTH, TEXAS 76102 WWW.AECOM.COM 817.698.6770	
	Date: 01/15/10	Project No. 60052528.103
		60052528 R101By.dwg

NO PART OR PARTS OF THIS DRAWING MAY BE REPRODUCED OR RETRANSMITTED IN ANY WAY OR FORM (ELECTRONIC, MECHANICAL, PHOTOCOPYING, OR OTHERWISE) WITHOUT THE EXPRESS WRITTEN PERMISSION OF AECOM.

J:\60052528 Possum Kingdom Lake\102.01 Assimilation of Data\Group 11\R101 JD\DRAWINGS\60052528 R101By.dwg 1/16/2010 12:10:51 PM CST



HEIRS OF JOHN HAYS SURVEY
ABSTRACT 222



9.5612 ACRES
416,487 SQ. FT.

LEASE BLOCK R101
AREA: 6-J

INTERIOR BLOCK
IMPROVEMENTS
NOT SHOWN

F.E.R.C. BUFFER AREA
2.3247 ACRES
101,265 SQ. FT.

POSSUM KINGDOM LAKE

THE BRAZOS RIVER CONSERVATION
AND RECLAMATION DISTRICT
TRACT 20-3-1
CALLED 128.60 ACRES
VOLUME 178, PAGE 560
D.R.P.P.C.T.

STANDARD LAND SURVEY
OF

11.8859 ACRES

SITUATED IN TRACTS 18-3-1 & 20-3-1
AREA 6-J, LOTS 1 THROUGH 10,
11-S, 11-N, 12-S, 12-N & 12-1
& AREA 6-I, LOT 1-D
POSSUM KINGDOM LAKE
HEIRS OF JOHN HAYS SURVEY
ABSTRACT 222 &
B. S. & F. SURVEY, ABSTRACT 107
PALO PINTO COUNTY, TEXAS

FOX HOLLOW FARMS SUBDIVISION
VOLUME 5, PAGE 15
P.R.P.P.C.T.

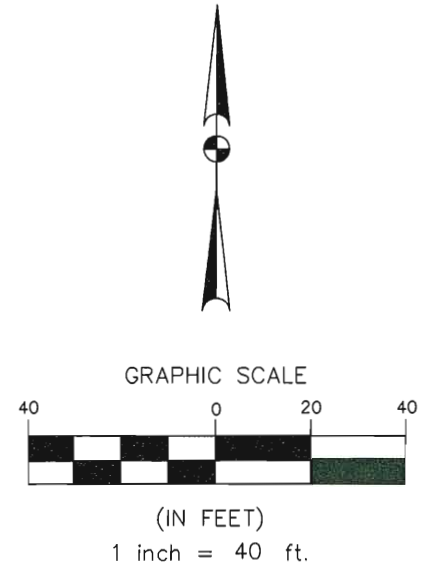
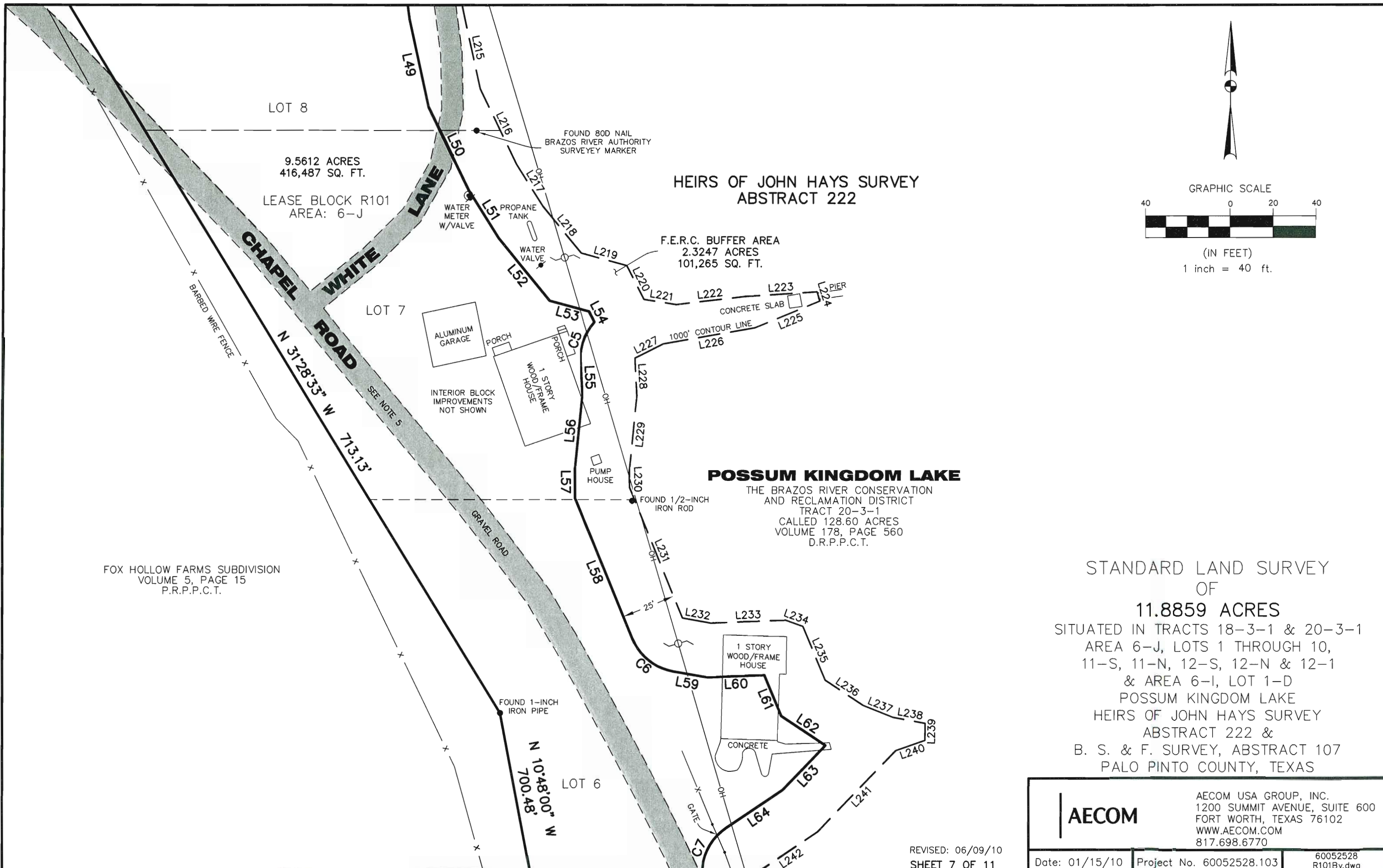
N 10°48'00" W
700.48'

REVISED: 06/09/10
SHEET 6 OF 11

AECOM	AECOM USA GROUP, INC. 1200 SUMMIT AVENUE, SUITE 600 FORT WORTH, TEXAS 76102 WWW.AECOM.COM 817.698.6770	
	Date: 01/15/10	Project No. 60052528.103
		60052528 R101By.dwg

NO PART OR PARTS OF THIS DRAWING MAY BE REPRODUCED OR TRANSMITTED IN ANY WAY OR FORM (ELECTRONIC, MECHANICAL, PHOTOCOPYING, OR OTHERWISE) WITHOUT THE EXPRESS WRITTEN PERMISSION OF AECOM.

J:\60052528_Possum Kingdom Lake\102.01 Assimilation of Data\Group 11\R101.dwg\DRAWINGS\60052528 R101By.dwg 1/16/2010 12:10:51 PM CST



**HEIRS OF JOHN HAYS SURVEY
ABSTRACT 222**

POSSUM KINGDOM LAKE

THE BRAZOS RIVER CONSERVATION
AND RECLAMATION DISTRICT
TRACT 20-3-1
CALLED 128.60 ACRES
VOLUME 178, PAGE 560
D.R.P.P.C.T.

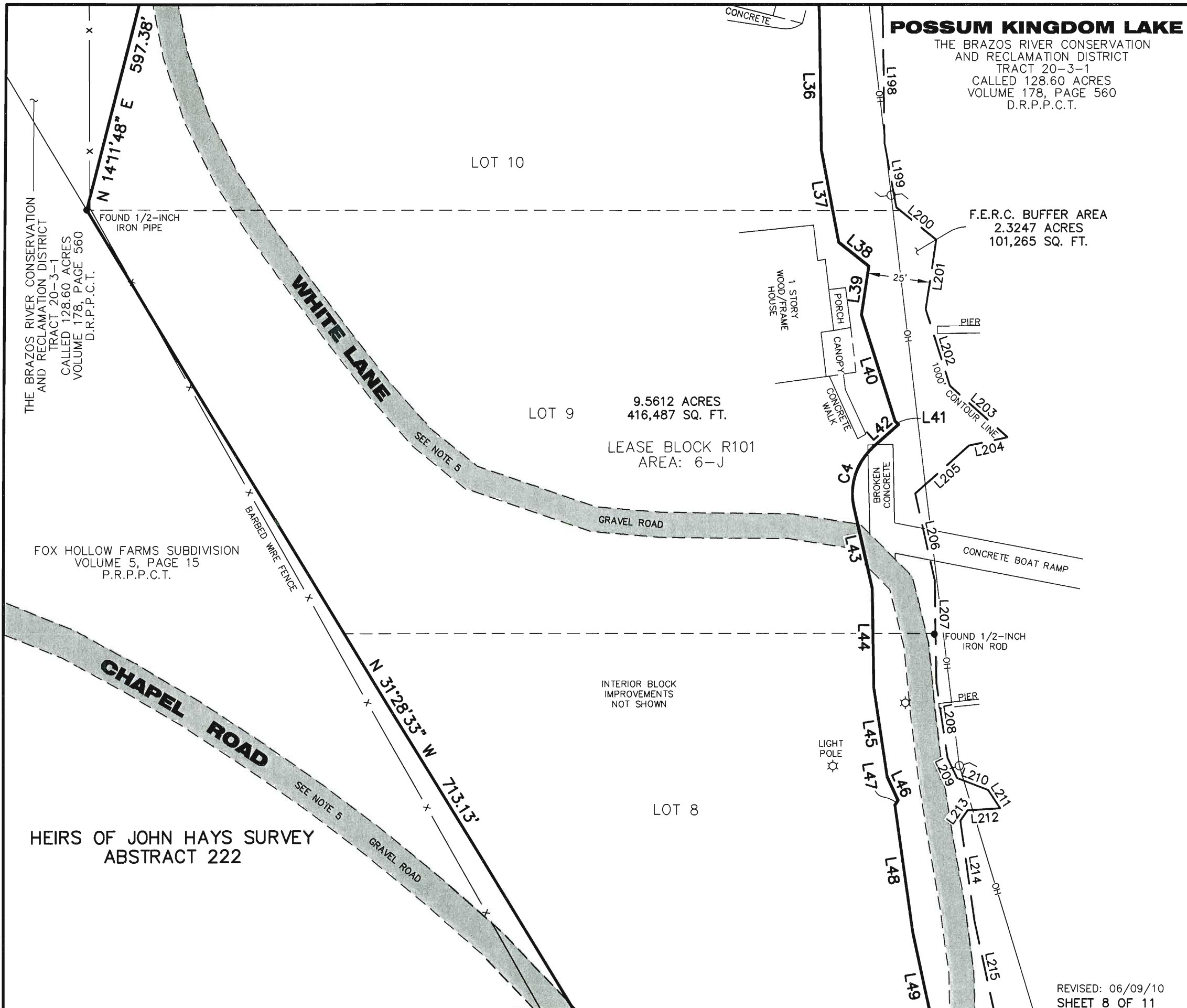
STANDARD LAND SURVEY
OF
11.8859 ACRES
SITUATED IN TRACTS 18-3-1 & 20-3-1
AREA 6-J, LOTS 1 THROUGH 10,
11-S, 11-N, 12-S, 12-N & 12-1
& AREA 6-I, LOT 1-D
POSSUM KINGDOM LAKE
HEIRS OF JOHN HAYS SURVEY
ABSTRACT 222 &
B. S. & F. SURVEY, ABSTRACT 107
PALO PINTO COUNTY, TEXAS

AECOM	AECOM USA GROUP, INC. 1200 SUMMIT AVENUE, SUITE 600 FORT WORTH, TEXAS 76102 WWW.AECOM.COM 817.698.6770	
	Date: 01/15/10	Project No. 60052528.103
		60052528 R101By.dwg

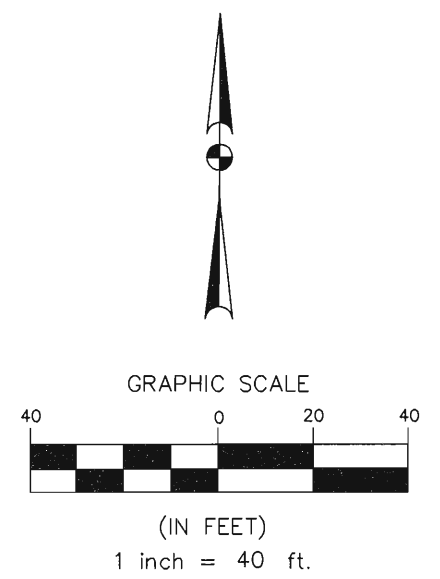
REVISED: 06/09/10
SHEET 7 OF 11

NO PART OR PARTS OF THIS DRAWING MAY BE REPRODUCED OR RETRANSMITTED IN ANY WAY OR FORM (ELECTRONIC, MECHANICAL, PHOTOCOPYING, OR OTHERWISE) WITHOUT THE EXPRESS WRITTEN PERMISSION OF AECOM.

J:\60052528 Possum Kingdom Lake\102.01 Assimilation of Data\Group 11\101 JDF\DRAWINGS\60052528 R101By.dwg 1/16/2010 12:10:51 PM CST



POSSUM KINGDOM LAKE
 THE BRAZOS RIVER CONSERVATION
 AND RECLAMATION DISTRICT
 TRACT 20-3-1
 CALLED 128.60 ACRES
 VOLUME 178, PAGE 560
 D.R.P.P.C.T.



LOT 9
 9.5612 ACRES
 416,487 SQ. FT.
 LEASE BLOCK R101
 AREA: 6-J

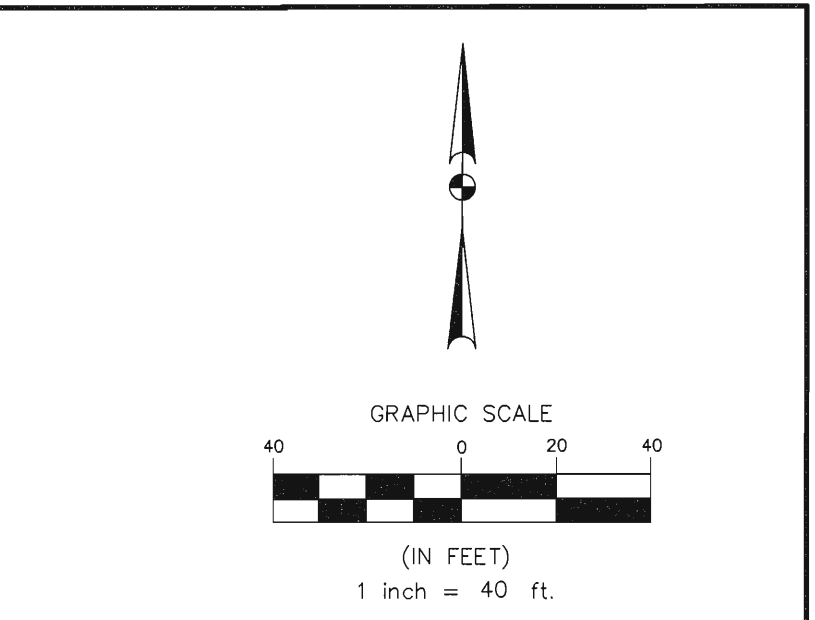
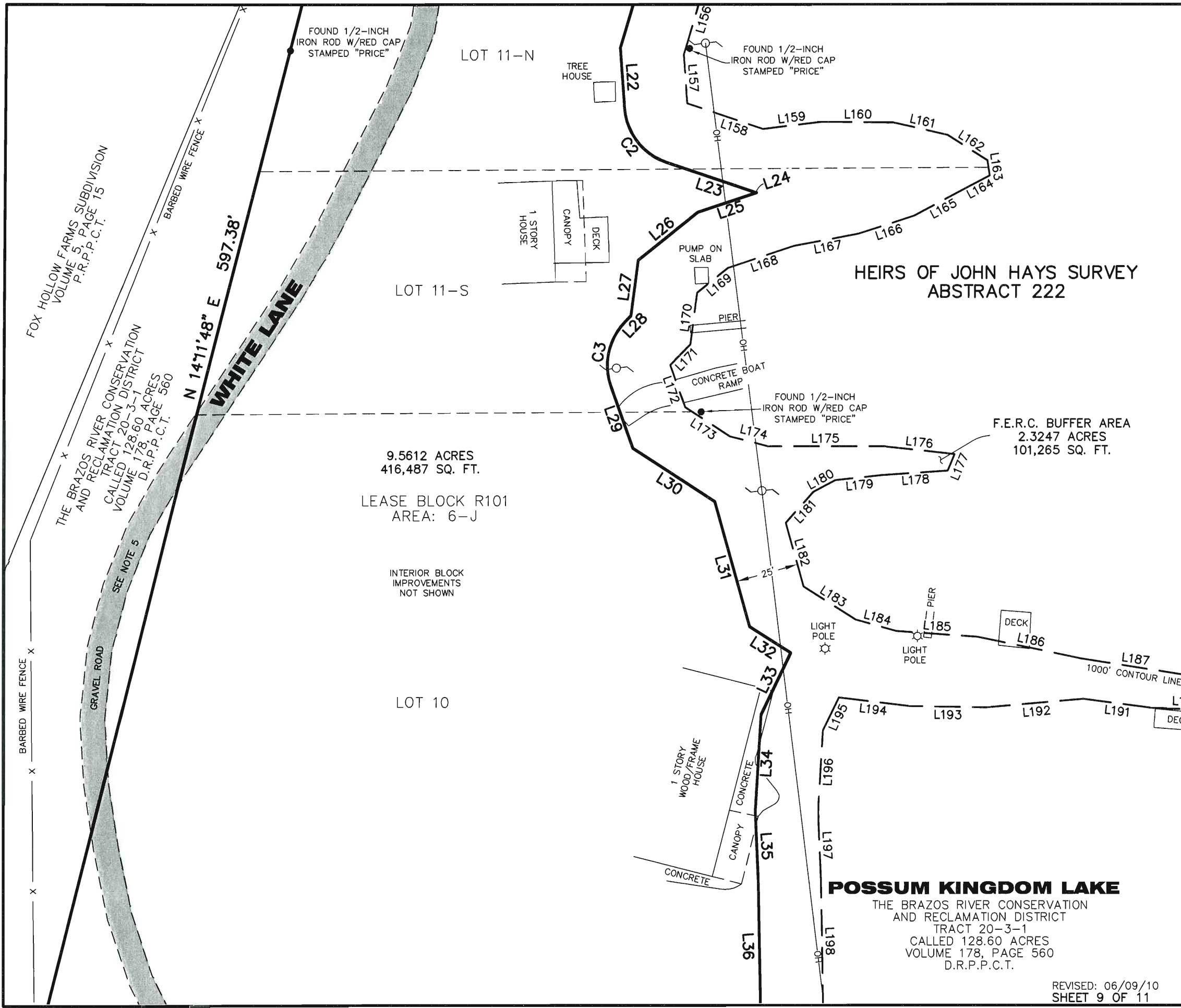
STANDARD LAND SURVEY
 OF
11.8859 ACRES
 SITUATED IN TRACTS 18-3-1 & 20-3-1
 AREA 6-J, LOTS 1 THROUGH 10,
 11-S, 11-N, 12-S, 12-N & 12-1
 & AREA 6-I, LOT 1-D
 POSSUM KINGDOM LAKE
 HEIRS OF JOHN HAYS SURVEY
 ABSTRACT 222 &
 B. S. & F. SURVEY, ABSTRACT 107
 PALO PINTO COUNTY, TEXAS

AECOM	AECOM USA GROUP, INC. 1200 SUMMIT AVENUE, SUITE 600 FORT WORTH, TEXAS 76102 WWW.AECOM.COM 817.698.6770	
	Date: 01/15/10	Project No. 60052528.103

REVISED: 06/09/10
 SHEET 8 OF 11

NO PART OR PARTS OF THIS DRAWING MAY BE REPRODUCED OR RETRANSMITTED IN ANY WAY OR FORM (ELECTRONIC, MECHANICAL, PHOTOCOPYING, OR OTHERWISE) WITHOUT THE EXPRESS WRITTEN PERMISSION OF AECOM.

J:\60052528 Possum Kingdom Lake\102.01 Assimilation of Data\Group 11\R101 JDF\DRAWINGS\60052528 R101By.dwg 1/16/2010 12:10:51 PM CST



9.5612 ACRES
416,487 SQ. FT.
LEASE BLOCK R101
AREA: 6-J

INTERIOR BLOCK
IMPROVEMENTS
NOT SHOWN

F.E.R.C. BUFFER AREA
2.3247 ACRES
101,265 SQ. FT.

STANDARD LAND SURVEY
OF

11.8859 ACRES

SITUATED IN TRACTS 18-3-1 & 20-3-1
AREA 6-J, LOTS 1 THROUGH 10,
11-S, 11-N, 12-S, 12-N & 12-1
& AREA 6-I, LOT 1-D
POSSUM KINGDOM LAKE
HEIRS OF JOHN HAYS SURVEY
ABSTRACT 222 &
B. S. & F. SURVEY, ABSTRACT 107
PALO PINTO COUNTY, TEXAS

POSSUM KINGDOM LAKE

THE BRAZOS RIVER CONSERVATION
AND RECLAMATION DISTRICT
TRACT 20-3-1
CALLED 128.60 ACRES
VOLUME 178, PAGE 560
D.R.P.P.C.T.

AECOM	AECOM USA GROUP, INC. 1200 SUMMIT AVENUE, SUITE 600 FORT WORTH, TEXAS 76102 WWW.AECOM.COM 817.698.6770	
	Date: 01/15/10	Project No. 60052528.103

REVISED: 06/09/10
SHEET 9 OF 11

NO PART OR PARTS OF THIS DRAWING MAY BE REPRODUCED OR RETRANSMITTED IN ANY WAY OR FORM (ELECTRONIC, MECHANICAL, PHOTOCOPYING, OR OTHERWISE) WITHOUT THE EXPRESS WRITTEN PERMISSION OF AECOM.

J:\60052528 Possu: Kingdom Lake\102.01 Assimilation of Data\Group 11\R101 JD\DRAWINGS\60052528 R101By.dwg 1/16/2010 12:10:51 PM CST

HEIRS OF JOHN HAYS SURVEY
ABSTRACT 222

FOX HOLLOW FARMS SUBDIVISION
VOLUME 5, PAGE 15
P.R.P.P.C.T.

THE BRAZOS RIVER CONSERVATION
AND RECLAMATION DISTRICT
TRACT 20-3-1
CALLED 128.60 ACRES
VOLUME 178, PAGE 560
D.R.P.P.C.T.

POSSUM KINGDOM LAKE

THE BRAZOS RIVER CONSERVATION
AND RECLAMATION DISTRICT
TRACT 20-3-1
CALLED 128.60 ACRES
VOLUME 178, PAGE 560
D.R.P.P.C.T.

F.E.R.C. BUFFER AREA
2.3247 ACRES
101,265 SQ. FT.

9.5612 ACRES
416,487 SQ. FT.

LEASE BLOCK R101
AREA: 6-J

STANDARD LAND SURVEY
OF

11.8859 ACRES

SITUATED IN TRACTS 18-3-1 & 20-3-1
AREA 6-J, LOTS 1 THROUGH 10,
11-S, 11-N, 12-S, 12-N & 12-1
& AREA 6-I, LOT 1-D
POSSUM KINGDOM LAKE
HEIRS OF JOHN HAYS SURVEY
ABSTRACT 222 &
B. S. & F. SURVEY, ABSTRACT 107
PALO PINTO COUNTY, TEXAS

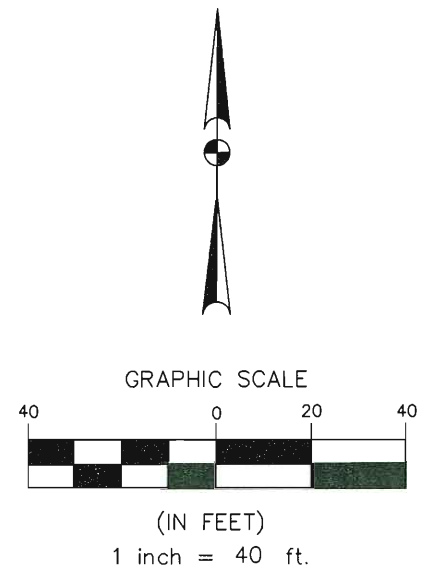
AECOM

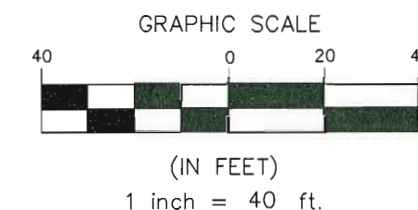
AECOM USA GROUP, INC.
1200 SUMMIT AVENUE, SUITE 600
FORT WORTH, TEXAS 76102
WWW.AECOM.COM
817.698.6770

REVISED: 06/09/10
SHEET 10 OF 11

Date: 01/15/10 Project No. 60052528.103

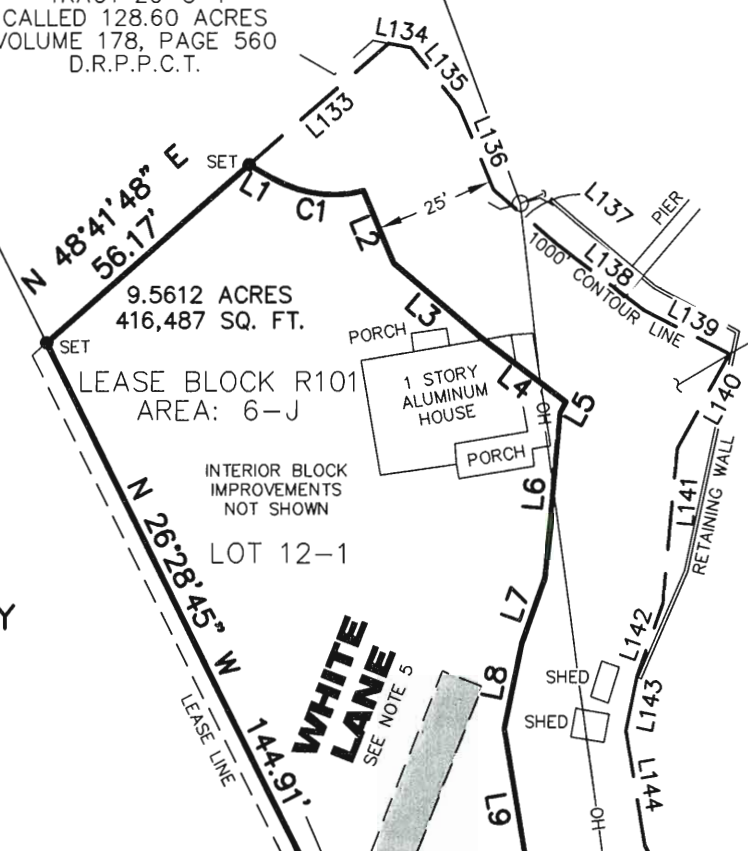
60052528
R101By.dwg





THE BRAZOS RIVER CONSERVATION
AND RECLAMATION DISTRICT
TRACT 20-3-1
CALLED 128.60 ACRES
VOLUME 178, PAGE 560
D.R.P.P.C.T.

FOX HOLLOW FARMS SUBDIVISION
VOLUME 5, PAGE 15
P.R.P.P.C.T.



F.E.R.C. BUFFER AREA
2.3247 ACRES
101,265 SQ. FT.

POSSUM KINGDOM LAKE

THE BRAZOS RIVER CONSERVATION
AND RECLAMATION DISTRICT
TRACT 20-3-1
CALLED 128.60 ACRES
VOLUME 178, PAGE 560
D.R.P.P.C.T.

HEIRS OF JOHN HAYS SURVEY
ABSTRACT 222

STANDARD LAND SURVEY
OF

11.8859 ACRES

SITUATED IN TRACTS 18-3-1 & 20-3-1
AREA 6-J, LOTS 1 THROUGH 10,
11-S, 11-N, 12-S, 12-N & 12-1
& AREA 6-I, LOT 1-D
POSSUM KINGDOM LAKE
HEIRS OF JOHN HAYS SURVEY
ABSTRACT 222 &
B. S. & F. SURVEY, ABSTRACT 107
PALO PINTO COUNTY, TEXAS

AECOM

AECOM USA GROUP, INC.
1200 SUMMIT AVENUE, SUITE 600
FORT WORTH, TEXAS 76102
WWW.AECOM.COM
817.698.6770

REVISED: 06/09/10
SHEET 11 OF 11

Date: 01/15/10 Project No. 60052528.103 60052528 R101By.dwg