

VICINITY MAP
NOT TO SCALE

- LEGEND
- = LEASE CORNER MARKER
"AS NOTED"
 - OH = OVERHEAD LINES
 - ⊕ = POWER POLE

ACREAGE TABLE
 LEASE BLOCK: 3.8741 ACRES
 F.E.R.C. BUFFER AREA: 0.8423 OF ONE ACRE
 SURVEY BLOCK: 4.7164 ACRES TOTAL

NOTES:

- 1) BEARINGS AND COORDINATES SHOWN HEREON ARE BASED ON THE NORTH AMERICAN DATUM OF 1983, TEXAS COORDINATE SYSTEM, NORTH CENTRAL ZONE (4202).
- 2) 1,000-FOOT CONTOUR ELEVATION OF POSSUM KINGDOM LAKE IS DETERMINED BASED ON MEASUREMENTS FROM THE TOP OF THE EXISTING SPILLWAY CREST GATES AT THE MORRIS SHEPPARD DAM BEING AT ELEVATION 1,000- FEET ABOVE MEAN SEA LEVEL AS NOTED IN FEDERAL POWER COMMISSION REPORT PROJECT NO. 1490 - TEXAS ON JUNE 2, 1938.
- 3) SET = 5/8" IRON ROD W/CAP STAMPED "AECOM" SET; D.R.P.P.C.T.= DEED RECORDS, PALO PINTO COUNTY, TEXAS; P.R.P.P.C.T.= PLAT RECORDS, PALO PINTO COUNTY, TEXAS; F.E.R.C.= FEDERAL ENERGY REGULATORY COMMISSION; J.R.P.P.C.T.= JUDGEMENT RECORDS, PALO PINTO COUNTY, TEXAS.
- 4) METES AND BOUNDS DESCRIPTIONS TO ACCOMPANY THIS SURVEY.
- 5) LOCATION OF ROAD PROVIDED BY LINK FIELD SERVICES, DATED OCTOBER 27, 2009, AS SHOWN SHADED HEREON.

SURVEYORS CERTIFICATE

TO: BRAZOS RIVER AUTHORITY, PATTERSON PK LAND PARTNERSHIP, LTD., AND HERITAGE TITLE COMPANY OF AUSTIN, INC.

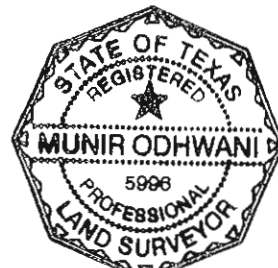
I, MUNIR ODHWANI, A REGISTERED PROFESSIONAL LAND SURVEYOR IN THE STATE OF TEXAS, REGISTRATION NUMBER 5996, HEREBY STATE THAT A SURVEY OF THE REAL PROPERTY DESCRIBED IN SEPARATE LEGAL DESCRIPTION AS NOTED HEREON, WAS ACTUALLY MADE UPON THE GROUND UNDER MY DIRECTION AND SUPERVISION, AND THAT TO THE BEST OF MY PROFESSIONAL KNOWLEDGE AND BELIEF, THE INFORMATION SHOWN HEREON IS CORRECT AS DETERMINED BY SAID SURVEY.

THIS SURVEY SUBSTANTIALLY COMPLIES WITH THE CURRENT TEXAS SOCIETY OF PROFESSIONAL SURVEYORS STANDARDS AND SPECIFICATIONS FOR A CATEGORY 1B, CONDITION II SURVEY.

Munir Odhwani

MUNIR ODHWANI
 REGISTERED PROFESSIONAL LAND SURVEYOR
 TEXAS REGISTRATION NO. 5996

DATE: FEBRUARY 12, 2010



LINE TABLE		
LINE	BEARING	DISTANCE
L1	S12°12'22"E	39.95'
L2	S33°43'35"W	29.14'
L3	S01°15'00"E	27.91'
L4	S07°57'55"E	24.91'
L5	S01°17'54"E	21.43'
L6	S00°00'25"E	18.72'
L7	S27°09'08"W	32.06'
L8	S03°05'45"W	47.72'
L9	S12°02'32"E	44.94'
L10	S12°36'16"E	35.74'
L11	N53°43'26"W	6.57'
L12	N80°01'00"W	52.25'
L13	S86°51'29"W	41.00'
L14	N76°11'29"W	36.24'
L15	S80°55'32"W	42.11'
L16	S87°55'36"W	24.52'
L17	S79°32'40"W	68.58'
L18	S38°46'31"W	36.97'
L19	N83°13'25"W	5.02'
L20	N53°23'10"W	11.31'
L21	N38°33'08"W	16.35'
L22	N31°58'51"W	35.87'
L23	N62°13'29"W	29.29'
L24	N78°27'38"W	36.19'
L25	N81°39'07"W	37.41'
L26	S85°07'06"W	29.23'
L27	S76°20'25"W	64.66'
L28	S72°00'21"W	51.37'
L29	S15°21'32"E	44.24'
L30	N41°22'50"W	29.98'
L31	N46°30'52"W	37.84'
L32	N58°45'58"W	34.21'
L33	N65°38'17"W	33.76'
L34	N61°12'14"W	39.76'
L35	N71°41'21"W	20.88'
L36	N77°58'37"W	37.04'
L37	S23°55'25"W	66.21'
L38	N89°21'18"E	25.52'
L39	S12°12'22"E	45.43'
L40	S33°43'35"W	31.86'
L41	S01°15'00"E	18.57'
L42	S07°57'55"E	24.90'
L43	S01°17'54"E	23.17'
L44	S00°00'25"E	25.05'
L45	S27°09'08"W	32.77'
L46	S03°05'45"W	39.07'
L47	S12°02'32"E	41.50'
L48	S12°36'16"E	34.52'
L49	S60°30'19"E	21.02'
L50	N31°28'03"E	4.23'

LINE TABLE		
LINE	BEARING	DISTANCE
L51	S53°36'44"E	34.10'
L52	S27°00'14"W	17.87'
L53	S50°21'03"W	6.71'
L54	S08°59'07"E	5.15'
L55	S12°42'35"E	15.08'
L56	S79°54'16"W	22.59'
L57	N11°45'14"W	17.59'
L58	N85°56'55"E	2.15'
L59	N31°37'45"W	16.71'
L60	N53°43'26"W	36.27'
L61	N80°01'00"W	43.53'
L62	S86°51'29"W	41.85'
L63	N76°11'29"W	34.90'
L64	S80°55'32"W	38.58'
L65	S87°55'36"W	24.21'
L66	S79°32'40"W	57.46'
L67	S38°46'31"W	41.54'
L68	N83°13'25"W	25.54'
L69	N53°23'10"W	21.22'
L70	N38°33'08"W	21.04'
L71	N31°58'51"W	30.55'
L72	N62°13'29"W	18.97'
L73	N78°27'38"W	31.93'
L74	N81°39'07"W	33.82'
L75	S85°07'06"W	24.41'
L76	S76°20'25"W	61.80'
L77	S72°00'21"W	26.55'
L78	S15°21'32"E	24.87'
L79	S59°22'28"W	4.18'
L80	N79°35'10"W	9.92'
L81	N07°01'03"E	6.30'
L82	N88°09'47"W	10.11'
L83	N41°22'50"W	29.64'
L84	N46°30'52"W	34.03'
L85	N58°45'58"W	30.03'
L86	N65°38'17"W	33.22'
L87	N61°12'14"W	38.44'
L88	N71°41'21"W	17.21'
L89	N77°58'37"W	15.38'
L90	S23°55'25"W	50.82'
L91	S10°33'54"E	3.02'
L92	N50°38'42"W	27.71'

CURVE TABLE					
CURVE	LENGTH	DELTA	RADIUS	CHORD BEARING	CHORD
C1	25.26	153°58'42"	9.40	S61°37'49"W	18.32'
C2	4.63	85°59'37"	3.08	S10°36'56"E	4.21'
C3	5.58	36°17'18"	8.82	S05°26'04"W	5.49'
C4	11.67	49°18'51"	13.56	S48°14'08"W	11.31'
C5	6.59	71°11'49"	5.30	N64°29'50"W	6.18'
C6	6.75	7°00'52"	55.14	N25°23'29"W	6.75'
C7	36.53	80°02'16"	26.15	S17°41'56"W	33.63'
C8	2.37	39°15'36"	3.46	N89°37'13"W	2.32'
C9	1.53	30°47'10"	2.85	S23°37'29"W	1.51'
C10	11.55	9°59'46"	66.20	S70°03'17"W	11.53'
C11	6.67	34°11'04"	11.18	S86°50'05"W	6.57'
C12	7.36	34°33'51"	12.20	N62°18'14"W	7.25'

STANDARD LAND SURVEY
 OF
 4.7164 ACRES
 SITUATED IN TRACT 18-3-1
 AREA 6-I, LOTS 9-11, 11A & 11B
 B.S. & F. SURVEY, ABSTRACT 107
 POSSUM KINGDOM LAKE
 PALO PINTO COUNTY, TEXAS

AECOM

AECOM USA GROUP, INC.
 1200 SUMMIT AVENUE, SUITE 600
 FORT WORTH, TEXAS 76102
 WWW.AECOM.COM
 817.698.6770



(IN FEET)
1 inch = 60 ft.

B.S. & F. SURVEY ABSTRACT 107

THE BRAZOS RIVER CONSERVATION
AND RECLAMATION DISTRICT
TRACT 18-3-1
CALLED 266.57 ACRES
VOLUME 180, PAGE 524
D.R.P.P.C.T.

FOUND 1/2-INCH IRON ROD
W/YELLOW CAP STAMPED
"LAWSON LAND SURVEYING"

N 89°21'18" E 642.16'

LOT 11-A

3.8741 ACRES
168,756 SQ. FT.

LEASE BLOCK R100
AREA: 6-1

INTERIOR BLOCK
IMPROVEMENTS
NOT SHOWN

FOUND 1/2-INCH
IRON ROD

POND

APPROXIMATE LOCATION
OF POND INSIDE
BLOCK (PER AERIAL)

POND

E 1/2 LOT 11

STANDARD LAND SURVEY OF

4.7164 ACRES

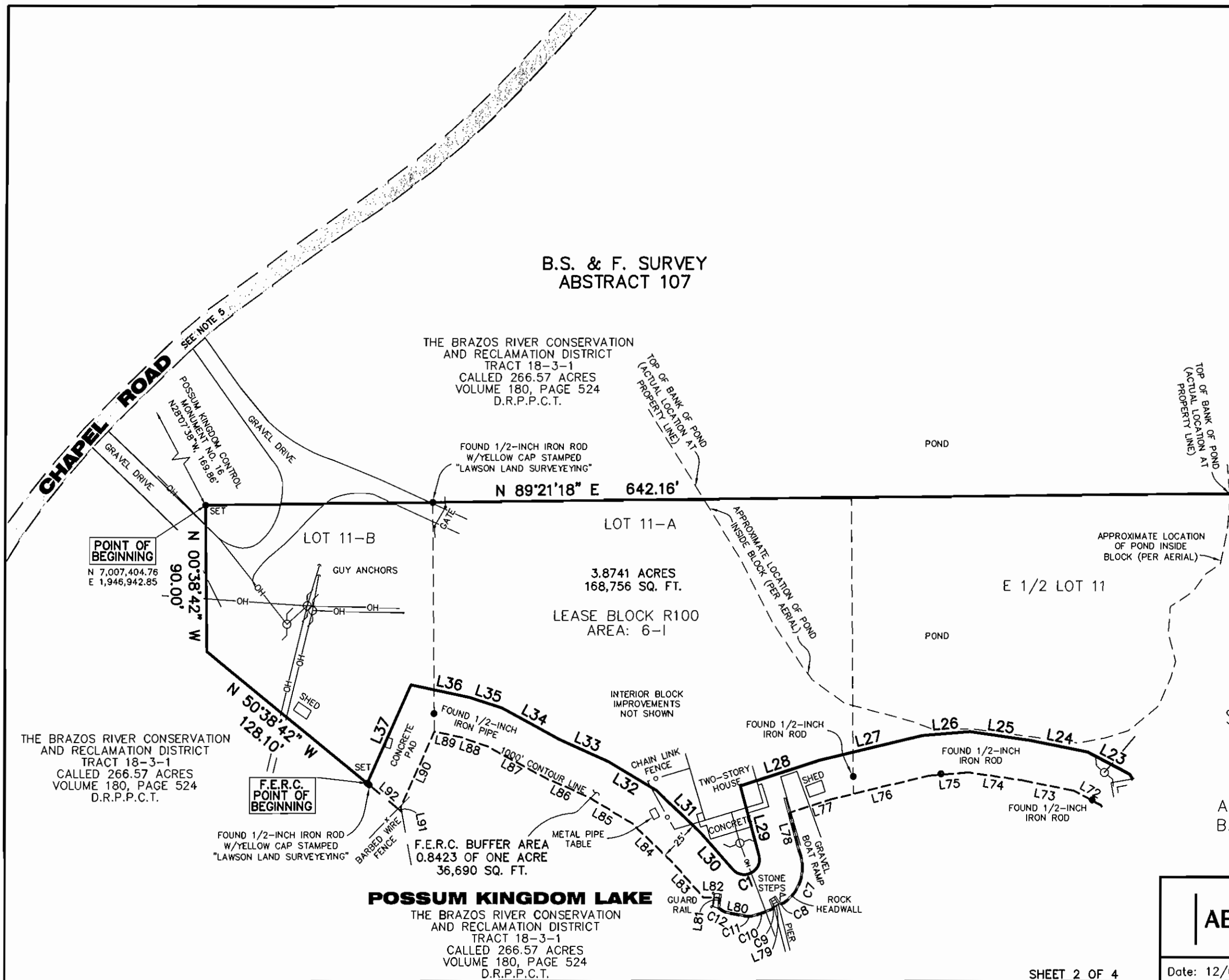
SITUATED IN TRACT 18-3-1
AREA 6-1, LOTS 9-11, 11A & 11B
B.S. & F. SURVEY, ABSTRACT 107
POSSUM KINGDOM LAKE
PALO PINTO COUNTY, TEXAS

AECOM

AECOM USA GROUP, INC.
1200 SUMMIT AVENUE, SUITE 600
FORT WORTH, TEXAS 76102
WWW.AECOM.COM
817.698.6770

SHEET 2 OF 4

Date: 12/09/09 Project No. 60052528.103 60052528 R100By.dwg



POINT OF BEGINNING
N 7,007,404.76
E 1,946,942.85

F.E.R.C. POINT OF BEGINNING

THE BRAZOS RIVER CONSERVATION
AND RECLAMATION DISTRICT
TRACT 18-3-1
CALLED 266.57 ACRES
VOLUME 180, PAGE 524
D.R.P.P.C.T.

FOUND 1/2-INCH IRON ROD
W/YELLOW CAP STAMPED
"LAWSON LAND SURVEYING"

F.E.R.C. BUFFER AREA
0.8423 OF ONE ACRE
36,690 SQ. FT.

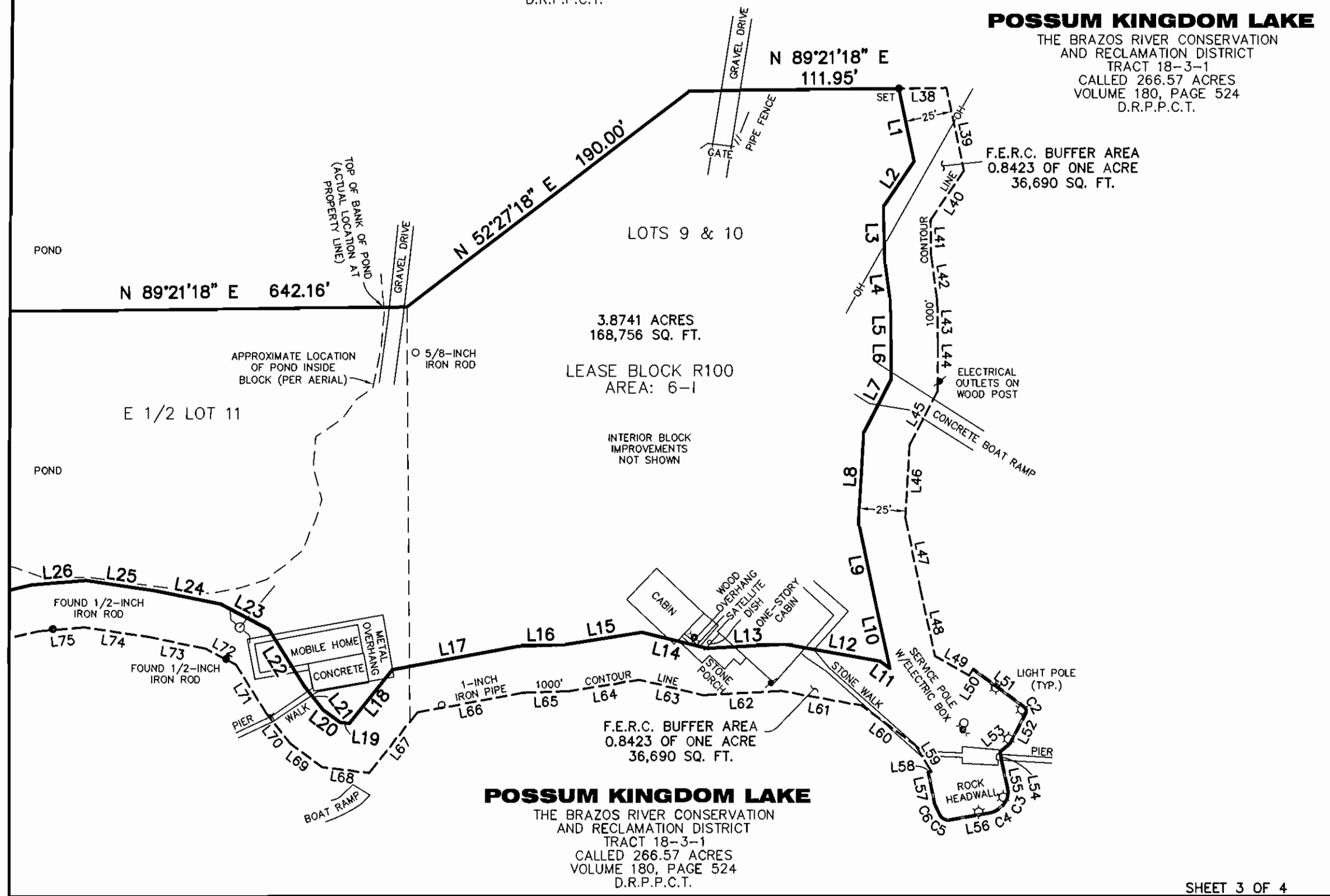
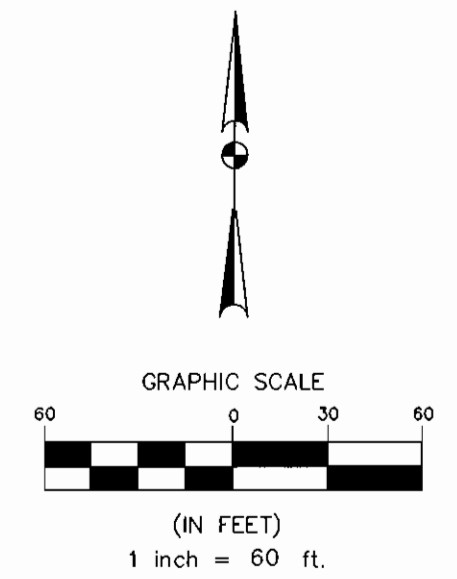
POSSUM KINGDOM LAKE
THE BRAZOS RIVER CONSERVATION
AND RECLAMATION DISTRICT
TRACT 18-3-1
CALLED 266.57 ACRES
VOLUME 180, PAGE 524
D.R.P.P.C.T.

**B.S. & F. SURVEY
ABSTRACT 107**

THE BRAZOS RIVER CONSERVATION
AND RECLAMATION DISTRICT
TRACT 18-3-1
CALLED 266.57 ACRES
VOLUME 180, PAGE 524
D.R.P.P.C.T.

POSSUM KINGDOM LAKE

THE BRAZOS RIVER CONSERVATION
AND RECLAMATION DISTRICT
TRACT 18-3-1
CALLED 266.57 ACRES
VOLUME 180, PAGE 524
D.R.P.P.C.T.



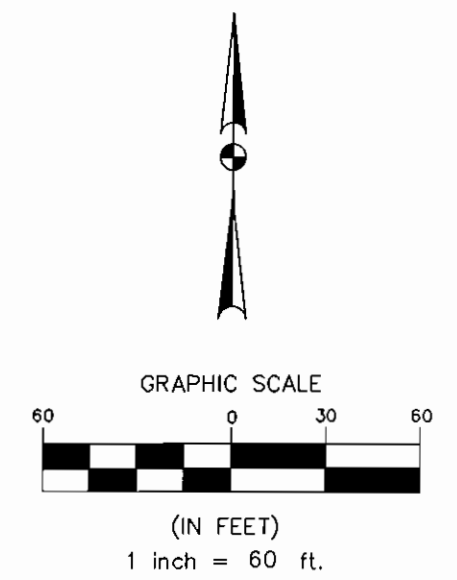
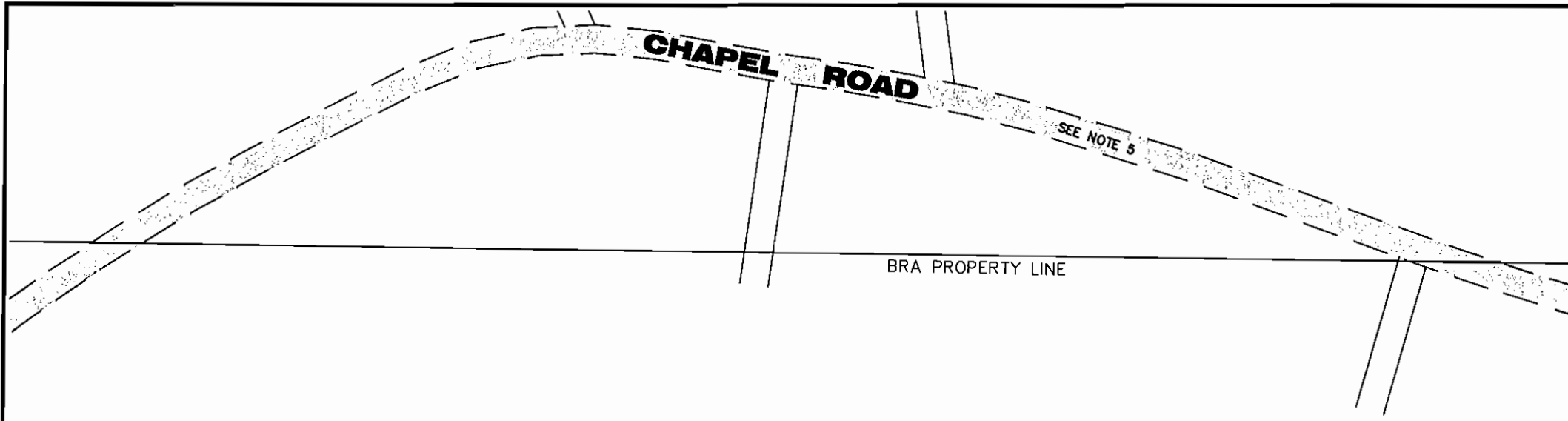
STANDARD LAND SURVEY
OF
4.7164 ACRES
SITUATED IN TRACT 18-3-1
AREA 6-I, LOTS 9-11, 11A & 11B
B.S. & F. SURVEY, ABSTRACT 107
POSSUM KINGDOM LAKE
PALO PINTO COUNTY, TEXAS

POSSUM KINGDOM LAKE
THE BRAZOS RIVER CONSERVATION
AND RECLAMATION DISTRICT
TRACT 18-3-1
CALLED 266.57 ACRES
VOLUME 180, PAGE 524
D.R.P.P.C.T.

AECOM	AECOM USA GROUP, INC. 1200 SUMMIT AVENUE, SUITE 600 FORT WORTH, TEXAS 76102 WWW.AECOM.COM 817.698.6770	
	Date: 12/10/09	Project No. 60052528.103

NO PART OR PARTS OF THIS DRAWING MAY BE REPRODUCED OR RE TRANSMITTED IN ANY WAY OR FORM (ELECTRONIC, MECHANICAL, PHOTOCOPYING, OR OTHERWISE) WITHOUT THE EXPRESS WRITTEN PERMISSION OF AECOM.

J:\60052528 Possum Kingdom Lake\102.01 Assimilation of Data\Group 11\100\DRAWINGS\60052528 R100By.dwg 12/10/2009 4:17:32 PM CST



**B.S. & F. SURVEY
ABSTRACT 107**

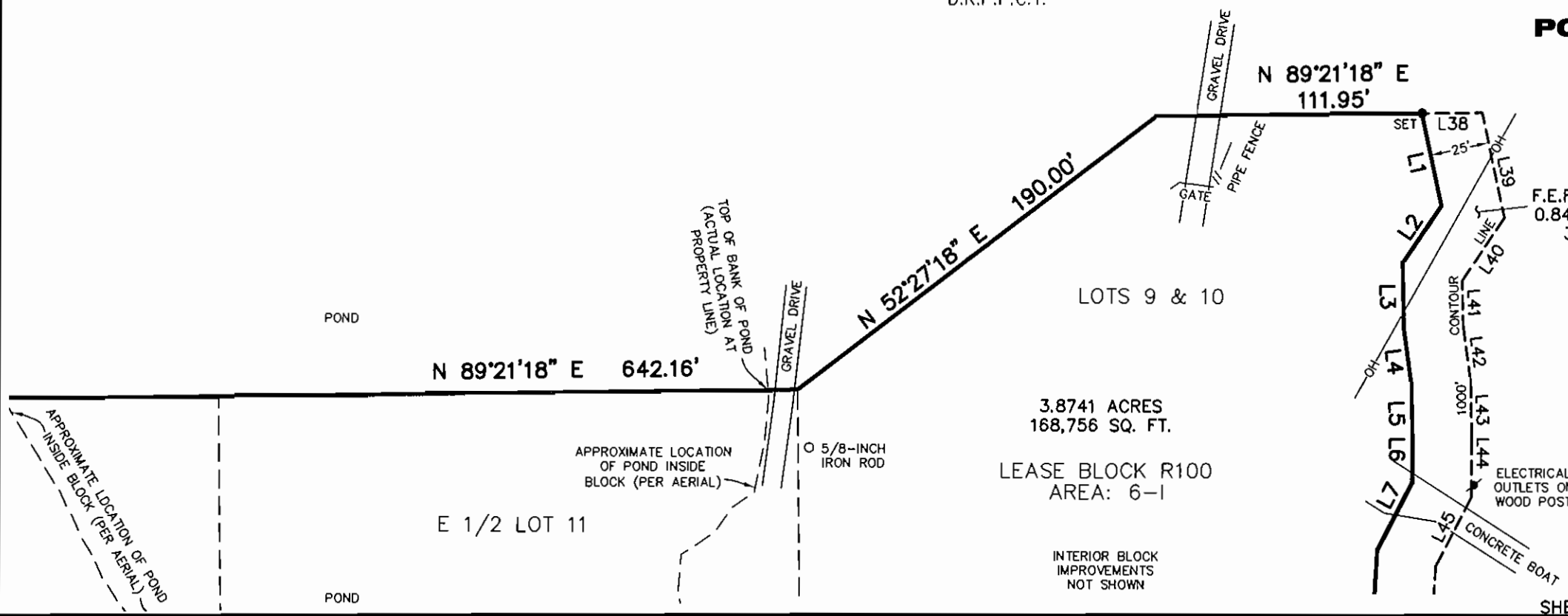
THE BRAZOS RIVER CONSERVATION
AND RECLAMATION DISTRICT
TRACT 18-3-1
CALLED 266.57 ACRES
VOLUME 180, PAGE 524
D.R.P.P.C.T.

POSSUM KINGDOM LAKE

THE BRAZOS RIVER CONSERVATION
AND RECLAMATION DISTRICT
TRACT 18-3-1
CALLED 266.57 ACRES
VOLUME 180, PAGE 524
D.R.P.P.C.T.

F.E.R.C. BUFFER AREA
0.8423 OF ONE ACRE
36,690 SQ. FT.

STANDARD LAND SURVEY
OF
4.7164 ACRES
SITUATED IN TRACT 18-3-1
AREA 6-1, LOTS 9-11, 11A & 11B
B.S. & F. SURVEY, ABSTRACT 107
POSSUM KINGDOM LAKE
PALO PINTO COUNTY, TEXAS



AECOM	AECOM USA GROUP, INC. 1200 SUMMIT AVENUE, SUITE 600 FORT WORTH, TEXAS 76102 WWW.AECOM.COM 817.698.6770	
	Date: 12/09/09	Project No. 60052528.103
		60052528 R100By.dwg

NO PART OR PARTS OF THIS DRAWING MAY BE REPRODUCED OR RETRANSMITTED IN ANY WAY OR FORM (ELECTRONIC, MECHANICAL, PHOTOCOPYING, OR OTHERWISE) WITHOUT THE EXPRESS WRITTEN PERMISSION OF AECOM.

J:\80052528 Possum Kingdom Lake\102.01 Assimilation of Data\Group 11\100\DRAWINGS\60052528 R100By.dwg 12/10/2009 4:17:32 PM CST