

VICINITY MAP
NOT TO SCALE

LEGEND

- = LEASE CORNER MARKER
"AS NOTED"
- OH = OVERHEAD LINES
- = POWER POLE

ACREAGE TABLE	
LEASE BLOCK:	3.7959 ACRES
F.E.R.C. BUFFER AREA:	1.0240 ACRES
SURVEY BLOCK:	4.8199 ACRES TOTAL

NOTES:

- 1) BEARINGS AND COORDINATES SHOWN HEREON ARE BASED ON THE NORTH AMERICAN DATUM OF 1983, TEXAS COORDINATE SYSTEM, NORTH CENTRAL ZONE (4202).
- 2) 1,000-FOOT CONTOUR ELEVATION OF POSSUM KINGDOM LAKE IS DETERMINED BASED ON MEASUREMENTS FROM THE TOP OF THE EXISTING SPILLWAY CREST GATES AT THE MORRIS SHEPPARD DAM BEING AT ELEVATION 1,000- FEET ABOVE MEAN SEA LEVEL AS NOTED IN FEDERAL POWER COMMISSION REPORT PROJECT NO. 1490 - TEXAS ON JUNE 2, 1938.
- 3) SET = 5/8" IRON ROD W/CAP STAMPED "AECOM" SET; D.R.S.C.T.= DEED RECORDS, STEPHENS COUNTY, TEXAS; P.R.S.C.T.= PLAT RECORDS, STEPHENS COUNTY, TEXAS; F.E.R.C.= FEDERAL ENERGY REGULATORY COMMISSION; J.R.S.C.T.= JUDGMENT RECORDS, STEPHENS COUNTY, TEXAS.
- 4) METES AND BOUNDS DESCRIPTIONS TO ACCOMPANY THIS SURVEY.
- 5) LOCATION OF ROADS PROVIDED BY LINK FIELD SERVICES, DATED OCTOBER 28, 2009, AS SHOWN SHADED HEREON.

SURVEYORS CERTIFICATE

TO: BRAZOS RIVER AUTHORITY, PATTERSON PK LAND PARTNERSHIP, LTD., AND HERITAGE TITLE COMPANY OF AUSTIN, INC.

I, MUNIR ODHWANI, A REGISTERED PROFESSIONAL LAND SURVEYOR IN THE STATE OF TEXAS, REGISTRATION NUMBER 5996, HEREBY STATE THAT A SURVEY OF THE REAL PROPERTY DESCRIBED IN SEPARATE LEGAL DESCRIPTION AS NOTED HEREON, WAS ACTUALLY MADE UPON THE GROUND UNDER MY DIRECTION AND SUPERVISION, AND THAT TO THE BEST OF MY PROFESSIONAL KNOWLEDGE AND BELIEF, THE INFORMATION SHOWN HEREON IS CORRECT AS DETERMINED BY SAID SURVEY.

THIS SURVEY SUBSTANTIALLY COMPLIES WITH THE CURRENT TEXAS SOCIETY OF PROFESSIONAL SURVEYORS STANDARDS AND SPECIFICATIONS FOR A CATEGORY 1B, CONDITION II SURVEY.

Munir Odhwani

MUNIR ODHWANI
REGISTERED PROFESSIONAL LAND SURVEYOR
TEXAS REGISTRATION NO. 5996

DATE: FEBRUARY 12, 2010



CURVE TABLE					
CURVE	LENGTH	DELTA	RADIUS	CHORD BEARING	CHORD
C1	26.95	5'49'40"	264.97	S28°24'50"E	26.94'
C2	31.08	6'04'22"	293.25	S28°32'11"E	31.07'
C3	5.69	14'24'00"	22.62	S24°22'22"E	5.67'
C4	16.12	6'05'44"	151.56	S14°07'30"E	16.12'
C5	17.03	12'52'18"	75.82	S04°38'29"E	17.00'
C6	25.01	1'04'05"	1341.36	S02°19'43"W	25.01'
C7	5.71	24°07'37"	13.56	S14°55'34"W	5.67'
C8	4.37	8'48'45"	28.43	S31°23'45"W	4.37'
C9	3.28	1'53'46"	99.03	S36°45'01"W	3.28'
C10	15.77	9'07'34"	99.03	S42°15'41"W	15.76'
C11	27.47	38°44'54"	40.61	S20°59'21"W	26.95'
C12	7.30	16°43'36"	25.00	N78°38'53"W	7.27'
C13	30.65	53°55'55"	32.56	N78°46'11"W	29.53'
C14	8.17	18°43'23"	25.00	S81°19'46"W	8.13'
C15	11.40	12°54'25"	50.61	S80°40'20"W	11.38'
C16	53.06	9°44'07"	312.28	N79°31'11"W	53.00'
C17	30.28	5°59'02"	289.97	S28°29'31"E	30.27'
C18	28.43	6°04'22"	268.25	S28°32'11"E	28.42'
C19	11.97	14°24'00"	47.62	S24°22'22"E	11.94'
C20	18.78	6°05'44"	176.56	S14°07'30"E	18.78'
C21	22.65	12°52'18"	100.82	S04°38'29"E	22.60'
C22	25.47	1'04'05"	1366.36	S02°19'43"W	25.47'
C23	16.24	24°07'37"	38.56	S14°55'34"W	16.12'
C24	8.22	8°48'45"	53.43	S31°23'45"W	8.21'
C25	33.90	15°39'35"	124.03	S43°37'55"W	33.79'
C26	13.43	49°17'07"	15.61	S16°33'21"W	13.02'
C27	4.92	37°09'55"	7.58	S10°29'45"W	4.83'
C28	5.43	2°54'10"	107.26	S30°31'47"W	5.43'
C29	10.44	64°41'32"	9.24	N83°08'53"W	9.89'
C30	4.66	9°09'58"	29.12	N46°13'08"W	4.65'
C31	5.74	43°30'24"	7.56	N63°23'21"W	5.60'
C32	8.47	35°22'44"	13.71	S89°02'14"W	8.33'
C33	18.84	42°09'00"	25.61	S72°15'49"W	18.42'
C34	44.61	7°34'52"	337.19	N80°47'19"W	44.58'

STANDARD LAND SURVEY
OF

4.8199 ACRES

SITUATED IN TRACTS 153-3-22,
149-3-22 & 17-3-23
AREA 6-E, LOTS E-1A - E-1D,
AREA 6-F, LOTS 1 - 2
& AREA 6-G, LOTS 1 - 3
POSSUM KINGDOM LAKE

HEIRS OF JOHN HIBINS SURVEY, ABSTRACT 70,
T. B. WYATT SURVEY, ABSTRACT 1481 &
J. W. DOOLEY SURVEY, ABSTRACT 2507
STEPHENS COUNTY, TEXAS

AECOM

AECOM USA GROUP, INC.
1200 SUMMIT AVENUE, SUITE 600
FORT WORTH, TEXAS 76102
WWW.AECOM.COM
817.698.6770

LINE TABLE		
LINE	BEARING	DISTANCE
L1	S20°25'01"E	68.18'
L2	S57°18'23"E	11.31'
L3	S22°37'31"E	1.34'
L4	S12°47'40"E	12.47'
L5	S36°15'28"E	10.29'
L6	S37°55'18"E	17.06'
L7	S34°31'45"W	18.93'
L8	S12°02'17"W	35.51'
L9	S42°25'05"W	22.67'
L10	S67°02'39"W	25.11'
L11	S54°33'15"W	46.35'
L12	S07°40'27"W	16.99'
L13	S19°51'10"W	36.63'
L14	S20°06'19"W	54.66'
L15	S08°28'04"E	22.76'
L16	S80°38'14"W	17.49'
L17	S34°51'59"E	63.50'
L18	N18°51'21"W	1.65'
L19	S46°52'05"W	17.68'
L20	S54°10'56"W	17.01'
L21	S18°51'21"E	2.38'
L22	S46°52'05"W	5.08'
L23	S78°16'54"W	12.94'
L24	S56°51'59"W	33.92'
L25	S30°50'55"W	23.70'
L26	S15°11'57"W	10.75'
L27	S50°35'35"W	13.09'
L28	S34°17'13"W	8.17'
L29	S41°19'26"W	3.27'
L30	S39°00'01"W	16.17'
L31	S31°58'52"W	14.80'
L32	S30°15'10"W	17.00'
L33	S06°20'25"W	13.29'
L34	S24°32'52"E	14.02'
L35	S58°56'40"W	7.66'
L36	S78°31'11"W	4.36'
L37	N75°08'32"W	5.48'
L38	N53°41'19"W	27.38'
L39	N70°56'39"W	26.57'
L40	S58°55'09"W	37.81'
L41	S28°29'25"W	34.07'
L42	S18°36'43"E	10.70'
L43	S42°21'56"W	19.58'
L44	S21°09'52"E	4.18'
L45	S55°22'05"W	9.47'
L46	S55°18'41"W	27.52'
L47	S57°39'28"W	10.37'
L48	S63°57'53"W	15.64'
L49	S63°34'32"W	22.63'
L50	S55°39'46"W	15.52'

LINE TABLE		
LINE	BEARING	DISTANCE
L51	S55°14'37"W	11.44'
L52	S71°58'05"W	6.89'
L53	N55°33'35"W	6.32'
L54	S76°18'20"W	20.64'
L55	S48°20'58"W	28.97'
L56	S08°22'48"W	46.88'
L57	S25°36'08"W	7.71'
L58	S43°31'07"W	5.88'
L59	S77°09'44"W	5.07'
L60	S89°07'33"W	25.18'
L61	N86°16'30"W	27.78'
L62	N85°34'45"W	20.43'
L63	N62°31'09"W	9.35'
L64	S81°56'14"W	32.18'
L65	S59°41'22"W	31.73'
L66	S55°25'00"W	36.08'
L67	S50°04'59"W	21.48'
L68	S70°18'14"W	6.11'
L69	S83°43'30"W	5.64'
L70	S80°03'13"W	12.78'
L71	N26°16'27"W	1.44'
L72	S80°20'09"W	34.80'
L73	N05°56'39"W	0.45'
L74	S84°01'40"W	32.58'
L75	S84°01'40"W	27.76'
L76	S40°53'06"W	0.28'
L77	N89°26'33"W	1.74'
L78	N13°51'17"W	44.32'
L79	N75°22'43"E	71.94'
L80	N79°23'43"E	33.12'
L81	N84°44'50"E	151.00'
L82	N00°04'00"W	88.25'
L83	S88°24'22"E	20.00'
L84	S88°24'22"E	26.97'
L85	S20°25'01"E	49.73'
L86	S57°18'23"E	10.78'
L87	S22°37'31"E	11.30'
L88	S12°47'40"E	9.42'
L89	S36°15'28"E	4.74'
L90	S37°55'18"E	35.01'
L91	S34°31'45"W	32.27'
L92	S12°02'17"W	46.60'
L93	S12°45'47"W	18.39'
L94	N53°43'51"W	13.87'
L95	S42°25'05"W	11.10'
L96	S80°42'56"W	2.91'
L97	S67°02'39"W	23.49'
L98	S54°33'15"W	32.78'
L99	S07°40'27"W	8.81'
L100	S19°51'10"W	39.35'

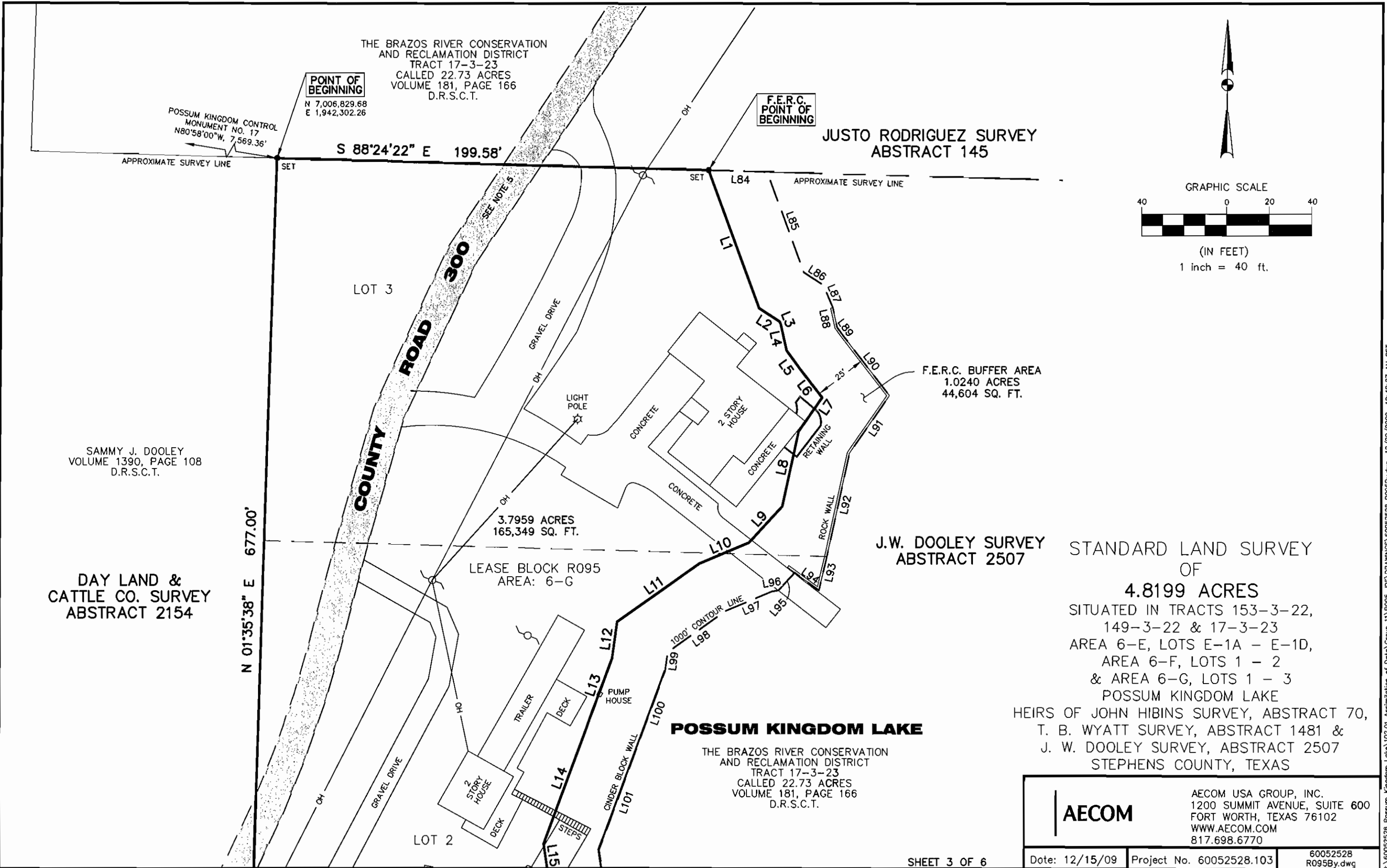
LINE TABLE		
LINE	BEARING	DISTANCE
L101	S20°06'19"W	48.35'
L102	S08°28'04"E	21.05'
L103	S08°38'14"E	19.96'
L104	S80°38'14"W	2.54'
L105	S34°51'59"E	24.63'
L106	S54°10'56"W	8.76'
L107	S18°51'21"E	17.62'
L108	S71°23'54"W	17.61'
L109	N18°51'21"W	9.58'
L110	S46°52'05"W	18.22'
L111	N40°21'52"W	5.51'
L112	S78°16'54"W	4.68'
L113	S56°51'59"W	23.42'
L114	S30°50'55"W	14.49'
L115	S15°11'57"W	15.30'
L116	S50°35'35"W	17.49'
L117	S34°17'13"W	6.12'
L118	S41°19'26"W	4.30'
L119	S39°00'01"W	16.03'
L120	S31°58'52"W	14.97'
L121	S30°15'10"W	11.33'
L122	S06°20'25"W	1.09'
L123	S24°32'52"E	14.61'
L124	S00°11'47"E	14.58'
L125	S38°41'16"W	6.37'
L126	S58°56'40"W	22.51'
L127	S78°31'11"W	14.52'
L128	N75°08'32"W	16.07'
L129	N53°41'19"W	28.32'
L130	N70°56'39"W	11.09'
L131	S58°55'09"W	19.31'
L132	S28°29'25"W	16.37'
L133	S18°36'43"E	17.39'
L134	S69°59'23"W	5.41'
L135	S42°21'56"W	12.64'
L136	S21°09'52"E	8.42'
L137	S55°22'05"W	29.19'
L138	S55°18'41"W	28.01'
L139	S57°39'28"W	12.26'
L140	S63°57'53"W	16.93'
L141	S63°34'32"W	23.68'
L142	S68°04'50"W	17.12'
L143	N24°49'32"W	6.34'
L144	S55°39'46"W	9.82'
L145	S55°14'37"W	18.93'
L146	S71°58'05"W	10.79'
L147	N55°33'35"W	9.53'
L148	S76°18'20"W	3.25'
L149	S48°20'58"W	11.26'
L150	S60°45'04"E	1.15'

LINE TABLE		
LINE	BEARING	DISTANCE
L151	S17°47'18"W	15.97'
L152	S08°22'48"W	27.24'
L153	S25°36'08"W	15.44'
L154	S43°31'07"W	16.41'
L155	S04°05'08"W	0.56'
L156	S77°09'44"W	15.89'
L157	S89°07'33"W	30.80'
L158	N86°16'30"W	26.94'
L159	N85°34'45"W	25.69'
L160	N62°31'09"W	6.44'
L161	S81°56'14"W	19.25'
L162	S59°41'22"W	25.88'
L163	S55°25'00"W	33.99'
L164	S50°04'59"W	5.27'
L165	S11°17'14"E	9.91'
L166	S32°21'47"W	11.38'
L167	N19°53'25"W	6.85'
L168	S83°59'28"W	13.56'
L169	S70°18'14"W	8.19'
L170	S83°43'30"W	7.78'
L171	S80°03'13"W	18.29'
L172	S82°53'31"W	12.61'
L173	N26°16'27"W	0.88'
L174	S80°20'09"W	17.28'
L175	S17°26'50"W	0.73'
L176	S67°53'53"W	9.07'
L177	S05°56'39"E	5.15'
L178	S81°30'43"W	16.53'
L179	N05°56'39"W	9.54'
L180	S84°01'40"W	7.56'
L181	S84°01'40"W	17.88'
L182	S40°53'06"W	1.97'
L183	N89°26'33"W	14.39'
L184	N13°51'17"W	28.32'

STANDARD LAND SURVEY
OF
4.8199 ACRES
SITUATED IN TRACTS 153-3-22,
149-3-22 & 17-3-23
AREA 6-E, LOTS E-1A - E-1D,
AREA 6-F, LOTS 1 - 2
& AREA 6-G, LOTS 1 - 3
POSSUM KINGDOM LAKE
HEIRS OF JOHN HIBINS SURVEY, ABSTRACT 70,
T. B. WYATT SURVEY, ABSTRACT 1481 &
J. W. DOOLEY SURVEY, ABSTRACT 2507
STEPHENS COUNTY, TEXAS

AECOM

AECOM USA GROUP, INC.
1200 SUMMIT AVENUE, SUITE 600
FORT WORTH, TEXAS 76102
WWW.AECOM.COM
817.698.6770

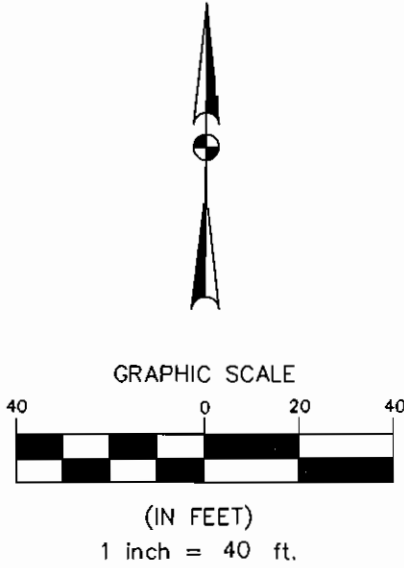


THE BRAZOS RIVER CONSERVATION AND RECLAMATION DISTRICT
TRACT 17-3-23
CALLED 22.73 ACRES
VOLUME 181, PAGE 166
D.R.S.C.T.

POINT OF BEGINNING
N 7,006,829.68
E 1,942,302.26

F.E.R.C. POINT OF BEGINNING

**JUSTO RODRIGUEZ SURVEY
ABSTRACT 145**



POSSUM KINGDOM CONTROL MONUMENT NO. 17
N80°58'00"W, 7,569.36'

S 88°24'22" E 199.58'

APPROXIMATE SURVEY LINE

LOT 3

COUNTY ROAD 300

3.7959 ACRES
165,349 SQ. FT.

F.E.R.C. BUFFER AREA
1.0240 ACRES
44,604 SQ. FT.

SAMMY J. DOOLEY
VOLUME 1390, PAGE 108
D.R.S.C.T.

**J.W. DOOLEY SURVEY
ABSTRACT 2507**

STANDARD LAND SURVEY
OF

4.8199 ACRES

SITUATED IN TRACTS 153-3-22,
149-3-22 & 17-3-23
AREA 6-E, LOTS E-1A - E-1D,
AREA 6-F, LOTS 1 - 2
& AREA 6-G, LOTS 1 - 3
POSSUM KINGDOM LAKE

**DAY LAND &
CATTLE CO. SURVEY
ABSTRACT 2154**

N 01°35'38" E 677.00'

LEASE BLOCK R095
AREA: 6-G

HEIRS OF JOHN HIBINS SURVEY, ABSTRACT 70,
T. B. WYATT SURVEY, ABSTRACT 1481 &
J. W. DOOLEY SURVEY, ABSTRACT 2507
STEPHENS COUNTY, TEXAS

POSSUM KINGDOM LAKE

THE BRAZOS RIVER CONSERVATION AND RECLAMATION DISTRICT
TRACT 17-3-23
CALLED 22.73 ACRES
VOLUME 181, PAGE 166
D.R.S.C.T.

AECOM

AECOM USA GROUP, INC.
1200 SUMMIT AVENUE, SUITE 600
FORT WORTH, TEXAS 76102
WWW.AECOM.COM
817.698.6770

SHEET 3 OF 6

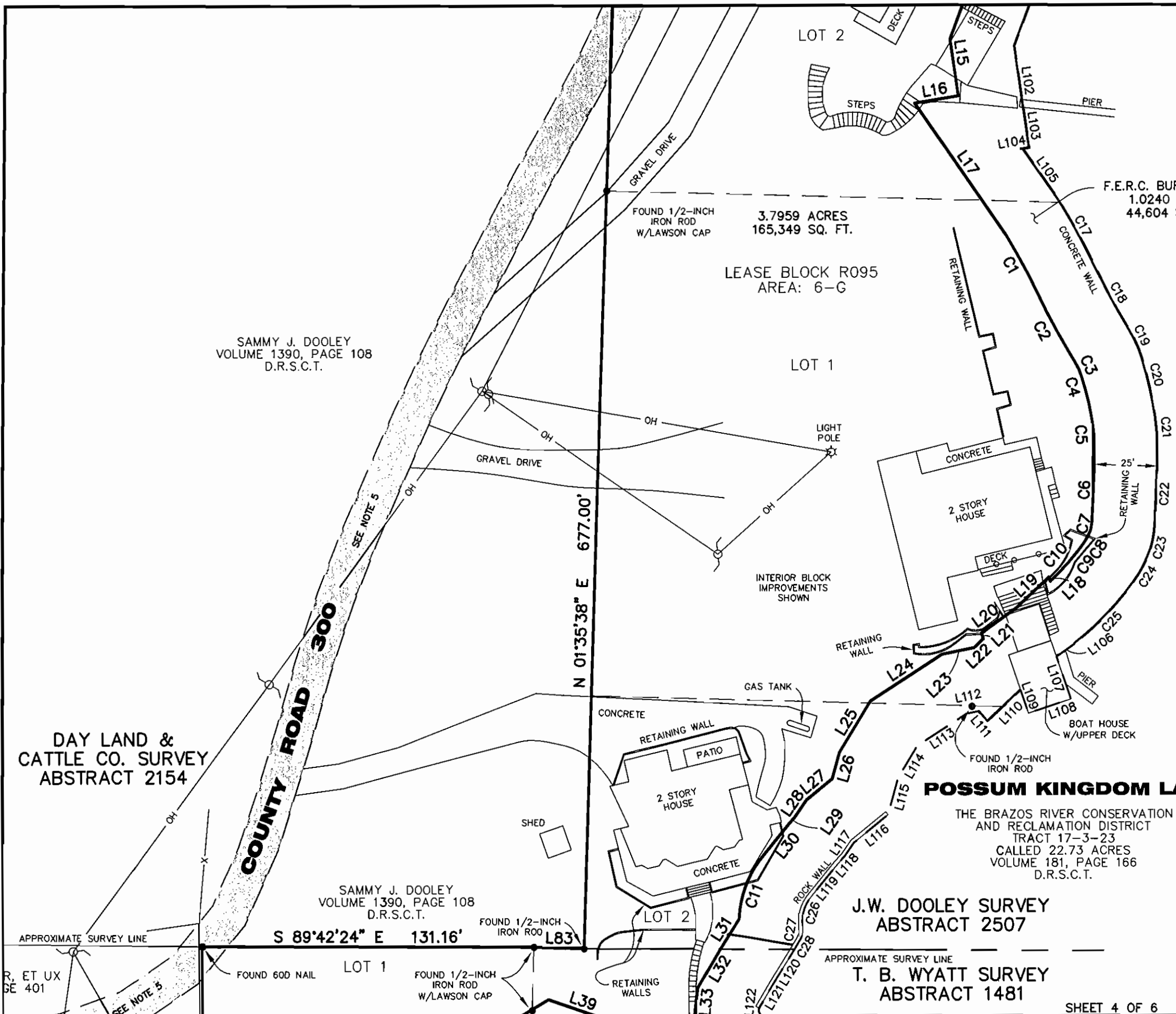
Date: 12/15/09

Project No. 60052528.103

60052528
R095By.dwg

NO PART OR PARTS OF THIS DRAWING MAY BE REPRODUCED OR RETRANSMITTED IN ANY WAY OR FORM (ELECTRONIC, MECHANICAL, PHOTOCOPYING, OR OTHERWISE) WITHOUT THE EXPRESS WRITTEN PERMISSION OF AECOM.

J:\60052528 Possum Kingdom Lake\102.01 Assimilation of Data\Group 11\R095.dwg\DRAWINGS\60052528 R095By.dwg 12/22/2009 10:48:27 AM CST



SAMMY J. DOOLEY
VOLUME 1390, PAGE 108
D.R.S.C.T.

DAY LAND &
CATTLE CO. SURVEY
ABSTRACT 2154

SAMMY J. DOOLEY
VOLUME 1390, PAGE 108
D.R.S.C.T.

J.W. DOOLEY SURVEY
ABSTRACT 2507

T. B. WYATT SURVEY
ABSTRACT 1481

3.7959 ACRES
165,349 SQ. FT.

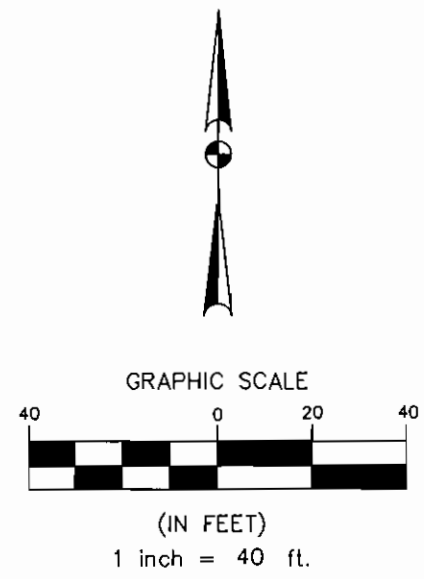
LEASE BLOCK R095
AREA: 6-G

F.E.R.C. BUFFER AREA
1.0240 ACRES
44,604 SQ. FT.

STANDARD LAND SURVEY
OF

4.8199 ACRES
SITUATED IN TRACTS 153-3-22,
149-3-22 & 17-3-23
AREA 6-E, LOTS E-1A - E-1D,
AREA 6-F, LOTS 1 - 2
& AREA 6-G, LOTS 1 - 3
POSSUM KINGDOM LAKE

HEIRS OF JOHN HIBINS SURVEY, ABSTRACT 70,
T. B. WYATT SURVEY, ABSTRACT 1481 &
J. W. DOOLEY SURVEY, ABSTRACT 2507
STEPHENS COUNTY, TEXAS



AECOM	AECOM USA GROUP, INC. 1200 SUMMIT AVENUE, SUITE 600 FORT WORTH, TEXAS 76102 WWW.AECOM.COM 817.698.6770	
	Date: 12/15/09	Project No. 60052528.103

NO PART OR PARTS OF THIS DRAWING MAY BE REPRODUCED OR TRANSMITTED IN ANY WAY OR FORM (ELECTRONIC, MECHANICAL, PHOTOCOPYING, OR OTHERWISE) WITHOUT THE EXPRESS WRITTEN PERMISSION OF AECOM.

J:\60052528 Possum Kingdom Lake\102.01 Assimilation of Data\Group 11\R095 JDF\DRAWINGS\60052528 R095B.dwg 12/22/2009 10:48:27 AM CST

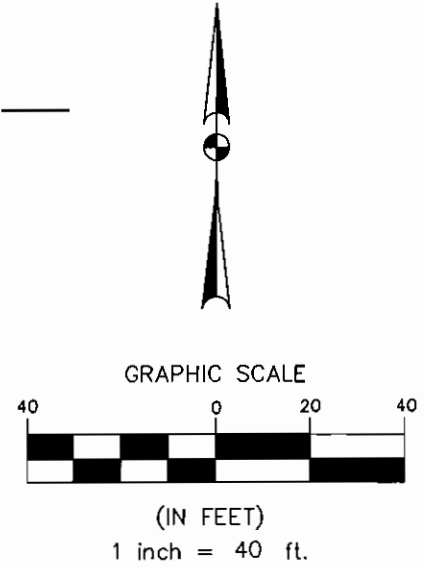
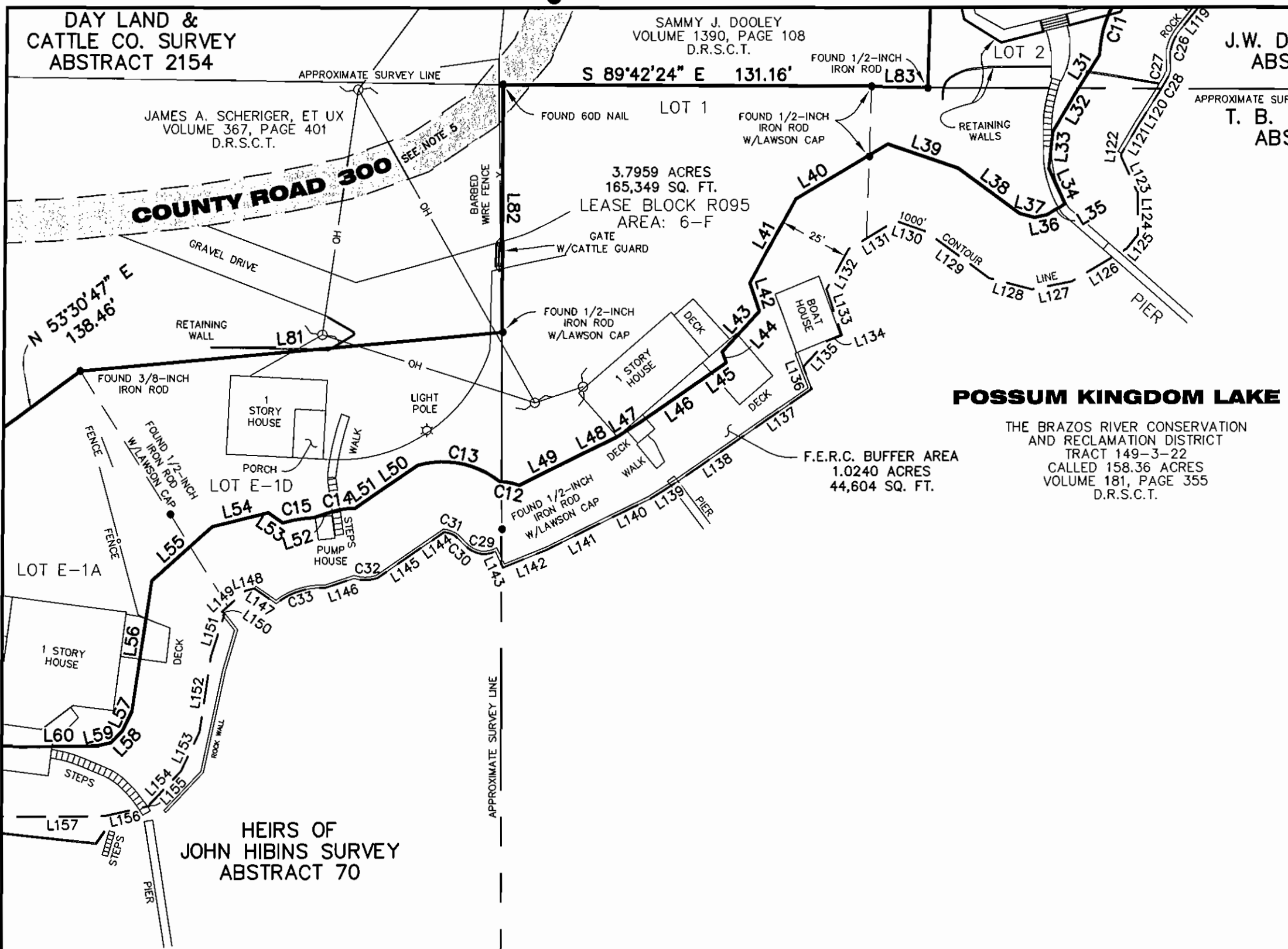
DAY LAND &
CATTLE CO. SURVEY
ABSTRACT 2154

JAMES A. SCHERIGER, ET UX
VOLUME 367, PAGE 401
D.R.S.C.T.

SAMMY J. DOOLEY
VOLUME 1390, PAGE 108
D.R.S.C.T.

J.W. DOOLEY SURVEY
ABSTRACT 2507

T. B. WYATT SURVEY
ABSTRACT 1481



POSSUM KINGDOM LAKE

THE BRAZOS RIVER CONSERVATION
AND RECLAMATION DISTRICT
TRACT 149-3-22
CALLED 158.36 ACRES
VOLUME 181, PAGE 355
D.R.S.C.T.

F.E.R.C. BUFFER AREA
1.0240 ACRES
44,604 SQ. FT.

HEIRS OF
JOHN HIBINS SURVEY
ABSTRACT 70

POSSUM KINGDOM LAKE

THE BRAZOS RIVER CONSERVATION
AND RECLAMATION DISTRICT
TRACT 153-3-22
CALLED 152.10 ACRES
VOLUME 180, PAGE 264
D.R.S.C.T.

STANDARD LAND SURVEY
OF
4.8199 ACRES
SITUATED IN TRACTS 153-3-22,
149-3-22 & 17-3-23
AREA 6-E, LOTS E-1A - E-1D,
AREA 6-F, LOTS 1 - 2
& AREA 6-G, LOTS 1 - 3
POSSUM KINGDOM LAKE
HEIRS OF JOHN HIBINS SURVEY, ABSTRACT 70,
T. B. WYATT SURVEY, ABSTRACT 1481 &
J. W. DOOLEY SURVEY, ABSTRACT 2507
STEPHENS COUNTY, TEXAS

AECOM	AECOM USA GROUP, INC. 1200 SUMMIT AVENUE, SUITE 600 FORT WORTH, TEXAS 76102 WWW.AECOM.COM 817.698.6770	
	Date: 12/15/09	Project No. 60052528.103

NO PART OR PARTS OF THIS DRAWING MAY BE REPRODUCED OR TRANSMITTED IN ANY WAY OR FORM (ELECTRONIC, MECHANICAL, PHOTOCOPYING, OR OTHERWISE) WITHOUT THE EXPRESS WRITTEN PERMISSION OF AECOM.

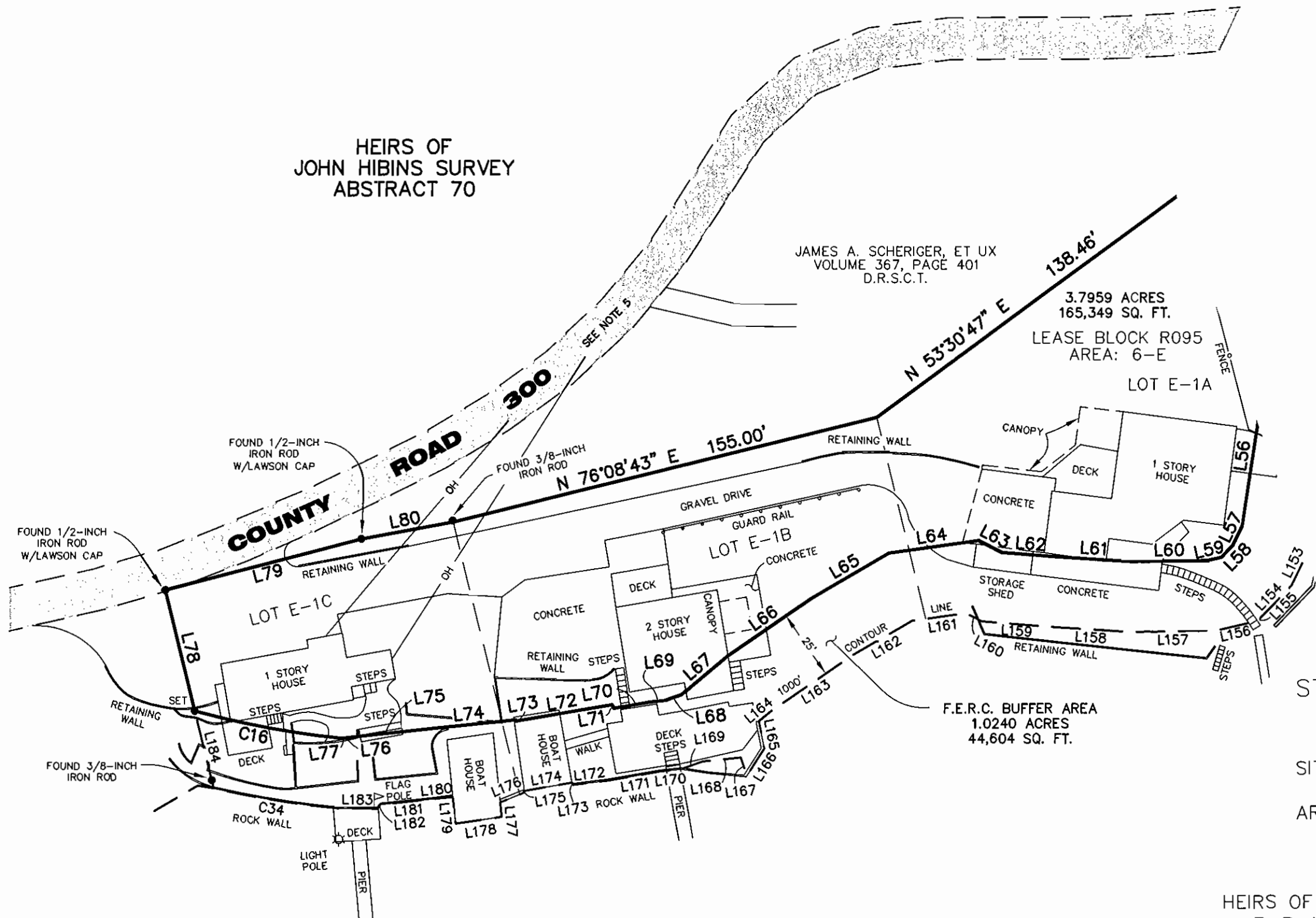
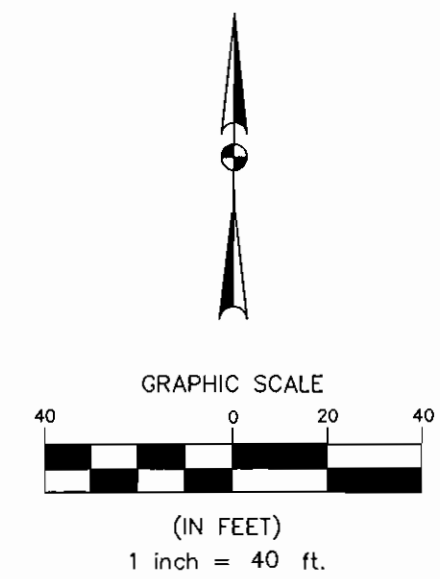
J:\60052528_Possum Kingdom Lake\102.01 Assimilation of Data\Group 11\R095.dwg DRAWINGS\60052528 R095B.dwg 12/22/2009 10:48:27 AM CST

HEIRS OF
JOHN HIBINS SURVEY
ABSTRACT 70

JAMES A. SCHERIGER, ET UX
VOLUME 367, PAGE 401
D.R.S.C.T.

3.7959 ACRES
165,349 SQ. FT.
LEASE BLOCK R095
AREA: 6-E
LOT E-1A

F.E.R.C. BUFFER AREA
1.0240 ACRES
44,604 SQ. FT.



STANDARD LAND SURVEY
OF
4.8199 ACRES

SITUATED IN TRACTS 153-3-22,
149-3-22 & 17-3-23
AREA 6-E, LOTS E-1A - E-1D,
AREA 6-F, LOTS 1 - 2
& AREA 6-G, LOTS 1 - 3
POSSUM KINGDOM LAKE

HEIRS OF JOHN HIBINS SURVEY, ABSTRACT 70,
T. B. WYATT SURVEY, ABSTRACT 1481 &
J. W. DOOLEY SURVEY, ABSTRACT 2507
STEPHENS COUNTY, TEXAS

POSSUM KINGDOM LAKE

THE BRAZOS RIVER CONSERVATION
AND RECLAMATION DISTRICT
TRACT 153-3-22
CALLED 152.10 ACRES
VOLUME 180, PAGE 264
D.R.S.C.T.

AECOM	AECOM USA GROUP, INC. 1200 SUMMIT AVENUE, SUITE 600 FORT WORTH, TEXAS 76102 WWW.AECOM.COM 817.698.6770	
	Date: 12/15/09	Project No. 60052528.103

NO PART OR PARTS OF THIS DRAWING MAY BE REPRODUCED OR RETRANSMITTED IN ANY WAY OR FORM (ELECTRONIC, MECHANICAL, PHOTOCOPYING, OR OTHERWISE) WITHOUT THE EXPRESS WRITTEN PERMISSION OF AECOM.

j:\60052528 Possum Kingdom Lake\102.01 Assimilation of Data\Group 11\R095_D\DRAWINGS\60052528 R095B.dwg 12/22/2009 10:46:27 AM CST