

VICINITY MAP
NOT TO SCALE

LINE TABLE		
LINE	BEARING	DISTANCE
L1	S59°49'25"E	106.71'
L2	S34°28'22"E	29.51'
L3	S02°08'34"W	64.16'
L4	S36°35'09"E	70.61'
L5	S07°35'43"W	52.52'
L6	S10°05'54"E	41.68'
L7	S03°40'13"W	126.26'
L8	S22°12'47"W	99.41'
L9	N74°22'05"E	37.99'
L10	N22°12'47"E	81.00'
L11	N03°33'23"E	134.56'
L12	N10°05'54"W	40.63'
L13	N07°35'43"E	60.53'
L14	N36°35'09"W	71.88'
L15	N02°08'34"E	63.54'
L16	N34°28'22"W	89.42'
L17	N67°44'16"E	122.32'
L18	N55°10'17"E	88.12'
L19	N80°03'35"E	30.98'
L20	S22°56'15"W	34.48'
L21	S18°57'59"W	38.75'
L22	S07°30'28"E	33.98'
L23	S02°30'24"E	41.08'
L24	S02°39'24"E	35.08'
L25	S04°08'18"E	33.65'
L26	S18°04'37"W	44.24'
L27	S03°30'57"E	45.86'
L28	S02°13'52"E	34.22'
L29	S14°03'43"E	48.35'
L30	S18°14'35"E	42.50'
L31	S18°22'27"E	27.77'
L32	S09°50'22"E	42.58'
L33	S16°16'46"E	48.16'
L34	S13°01'12"E	27.73'
L35	S09°11'41"W	29.70'
L36	S04°00'18"W	23.29'
L37	S60°30'14"W	16.03'
L38	S66°48'21"W	22.60'
L39	S70°59'13"W	33.42'
L40	S71°13'57"W	31.38'

LINE TABLE		
LINE	BEARING	DISTANCE
L41	S73°09'16"W	35.83'
L42	S55°11'33"W	27.59'
L43	S75°16'00"W	31.51'
L44	S75°14'23"W	45.32'
L45	S47°58'56"W	30.09'
L46	S69°27'06"W	20.97'
L47	N66°28'56"W	7.07'
L48	N51°35'35"W	16.79'
L49	N45°10'18"W	6.79'
L50	N47°35'37"W	42.21'
L51	N59°08'39"W	32.25'
L52	N78°17'13"W	35.54'
L53	S87°39'56"W	23.80'
L54	S84°40'39"W	14.34'
L55	N44°10'03"E	6.43'
L56	N47°00'15"E	21.88'
L57	N38°52'12"E	43.03'
L58	N35°01'03"E	12.98'
L59	N03°05'07"E	28.02'
L60	N59°47'35"W	30.55'
L61	S74°02'28"W	32.05'
L62	N81°41'45"W	24.96'
L63	N83°57'40"W	23.89'
L64	N78°27'08"W	20.72'
L65	S72°50'11"W	19.74'
L66	S74°00'56"W	26.57'
L67	N02°55'26"W	3.29'
L69	N35°41'32"E	30.09'
L70	N35°14'26"E	28.44'
L71	N13°40'14"E	19.34'
L72	N34°39'47"E	22.97'
L73	N25°47'08"E	33.80'
L74	N29°41'48"E	39.77'
L75	N22°02'26"E	43.19'
L76	N23°19'55"E	55.46'
L77	N08°17'12"W	21.93'
L78	N61°18'19"E	39.05'
L79	N80°03'35"E	32.27'
L80	S36°39'28"W	8.87'
L81	S22°56'15"W	42.52'

LINE TABLE		
LINE	BEARING	DISTANCE
L82	S18°57'59"W	32.00'
L83	S07°30'28"E	29.19'
L84	S02°30'24"E	42.14'
L85	S02°39'24"E	34.73'
L86	S04°08'18"E	38.24'
L87	S18°04'37"W	44.39'
L88	S03°30'57"E	41.37'
L89	S02°13'52"E	31.91'
L90	S14°03'43"E	44.85'
L91	S18°14'35"E	41.56'
L92	S18°22'27"E	29.61'
L93	S09°50'22"E	43.04'
L94	S16°16'46"E	47.47'
L95	S13°01'12"E	33.35'
L96	S09°11'41"W	33.48'
L97	S04°00'18"W	26.62'
L98	S40°31'49"W	21.89'
L99	S60°30'14"W	15.21'
L100	S66°48'21"W	24.88'
L101	S70°59'13"W	34.39'
L102	S71°13'57"W	31.85'
L103	S73°09'16"W	32.29'
L104	S55°11'33"W	28.06'
L105	S75°16'00"W	35.94'
L106	S75°14'23"W	39.25'
L107	S47°58'56"W	28.77'
L108	S69°27'06"W	35.83'
L109	N66°28'56"W	20.46'
L110	N51°35'35"W	21.46'
L111	N45°10'18"W	7.67'
L112	N47°35'37"W	39.15'
L113	N59°08'39"W	25.51'
L114	N78°17'13"W	28.25'
L115	S87°39'56"W	20.07'
L116	S84°40'39"W	15.80'
L117	S83°45'17"W	20.33'
L118	N62°49'33"W	17.99'
L119	N14°16'03"E	21.96'
L120	N44°10'03"E	12.19'
L121	N47°00'15"E	20.73'

LINE TABLE		
LINE	BEARING	DISTANCE
L122	N38°52'12"E	40.41'
L123	N35°01'03"E	14.26'
L124	N03°05'07"E	25.23'
L125	N59°47'35"W	16.96'
L126	S74°02'28"W	26.77'
L127	N81°41'45"W	29.84'
L128	N83°57'40"W	24.60'
L129	N78°27'08"W	15.52'
L130	S72°50'11"W	13.60'
L131	S74°00'56"W	18.59'
L132	S74°48'45"W	22.87'
L135	N54°11'46"W	20.92'
L136	N02°55'26"W	26.31'
L137	N35°41'32"E	38.75'
L138	N35°14'26"E	23.58'
L139	N13°40'14"E	19.21'
L140	N34°39'47"E	25.66'
L141	N25°47'08"E	32.71'
L142	N29°41'48"E	38.95'
L143	N22°02'26"E	41.80'
L144	N23°19'55"E	48.66'
L145	N08°17'12"W	5.55'
L146	N61°18'19"E	26.67'

ACREAGE TABLE	
LEASE BLOCK:	4.2956 ACRES
F.E.R.C. BUFFER AREA:	1.1206 ACRES
SURVEY BLOCK:	5.4162 ACRES TOTAL

CURVE TABLE					
CURVE	LENGTH	DELTA	RADIUS	CHORD BEARING	CHORD
C1	27.65'	28°45'45"	55.08'	N38°21'32"E	27.36'
C2	20.79'	31°03'41"	38.35'	N27°10'04"E	20.54'
C3	5.23'	52°11'19"	5.74'	N32°42'05"E	5.05'
C4	92.72'	44°52'23"	118.38'	N31°30'51"E	90.36'
C5	38.07'	33°51'09"	64.43'	N19°35'52"W	37.52'
C6	20.00'	10°44'48"	106.64'	N41°53'50"W	19.97'
C7	19.40'	8°19'00"	133.64'	N37°38'23"E	19.38'
C8	23.21'	44°13'22"	30.08'	N38°50'12"E	22.64'
C9	8.04'	34°30'09"	13.35'	N30°48'07"E	7.92'
C10	24.72'	46°04'49"	30.74'	N32°54'28"E	24.06'
C11	71.32'	43°45'29"	93.38'	N31°42'44"E	69.60'
C12	22.19'	32°14'54"	39.43'	N20°23'59"W	21.90'
C13	12.75'	8°56'54"	81.64'	N40°59'53"W	12.74'

SURVEYORS CERTIFICATE

TO: BRAZOS RIVER AUTHORITY, PATTERSON PK LAND PARTNERSHIP, LTD., AND HERITAGE TITLE COMPANY OF AUSTIN, INC.

I, JAMES T. MULLER, A REGISTERED PROFESSIONAL LAND SURVEYOR IN THE STATE OF TEXAS, REGISTRATION NUMBER 4522, HEREBY STATE THAT A SURVEY OF THE REAL PROPERTY DESCRIBED IN SEPARATE LEGAL DESCRIPTION AS NOTED HEREON, WAS ACTUALLY MADE UPON THE GROUND UNDER MY DIRECTION AND SUPERVISION, AND THAT TO THE BEST OF MY PROFESSIONAL KNOWLEDGE AND BELIEF, THE INFORMATION SHOWN HEREON IS CORRECT AS DETERMINED BY SAID SURVEY.

THIS SURVEY SUBSTANTIALLY COMPLIES WITH THE CURRENT TEXAS SOCIETY OF PROFESSIONAL SURVEYORS STANDARDS AND SPECIFICATIONS FOR A CATEGORY 1B, CONDITION II SURVEY.


 JAMES T. MULLER
 REGISTERED PROFESSIONAL LAND SURVEYOR
 TEXAS REGISTRATION NO. 4522



DATE: FEBRUARY 12, 2010

NOTES:

1) BEARINGS AND COORDINATES SHOWN HEREON ARE BASED ON THE NORTH AMERICAN DATUM OF 1983, TEXAS COORDINATE SYSTEM, NORTH CENTRAL ZONE (4202).

2) 1,000-FOOT CONTOUR ELEVATION OF POSSUM KINGDOM LAKE IS DETERMINED BASED ON MEASUREMENTS FROM THE TOP OF THE EXISTING SPILLWAY CREST GATES AT THE MORRIS SHEPPARD DAM BEING AT ELEVATION 1,000- FEET ABOVE MEAN SEA LEVEL AS NOTED IN FEDERAL POWER COMMISSION REPORT PROJECT NO. 1490 - TEXAS ON JUNE 2, 1938.

3) SET = 5/8" IRON ROD W/CAP STAMPED "AECOM" SET; D.R.P.P.C.T.= DEED RECORDS, PALO PINTO COUNTY, TEXAS; P.R.P.P.C.T.= PLAT RECORDS, PALO PINTO COUNTY, TEXAS; F.E.R.C.= FEDERAL ENERGY REGULATORY COMMISSION; J.R.P.P.C.T.= JUDGEMENT RECORDS, PALO PINTO COUNTY, TEXAS.

4) METES AND BOUNDS DESCRIPTIONS TO ACCOMPANY THIS SURVEY.

5) THERE IS A 10' BUILDING OR SETBACK LINE AND A 10' UTILITY EASEMENT ON EACH SIDE OF ALL SIDE LOT LINES IN BLOCK F; COMMON AREAS, GREENBELT AREAS AND DRAINAGE EASEMENTS ARE ALSO DESIGNATED AS UTILITY EASEMENTS AS NOTED ON THE RANCH ON POSSUM KINGDOM SECTION 1 RECORDED IN VOLUME 7, PAGE 90 D.R.P.P.C.T.

STANDARD LAND SURVEY
 OF
5.4162 ACRES
 AREA 0-1
 LOTS F1 B.R.A. - F10 B.R.A., AND PART OF
 COMMON ACCESS AREA LOT 6, BLOCK F
 THE RANCH ON POSSUM KINGDOM LAKE
 H.M.W.P. & H.A. LONGINO SURVEY,
 ABSTRACT 2070
 PALO PINTO COUNTY, TEXAS

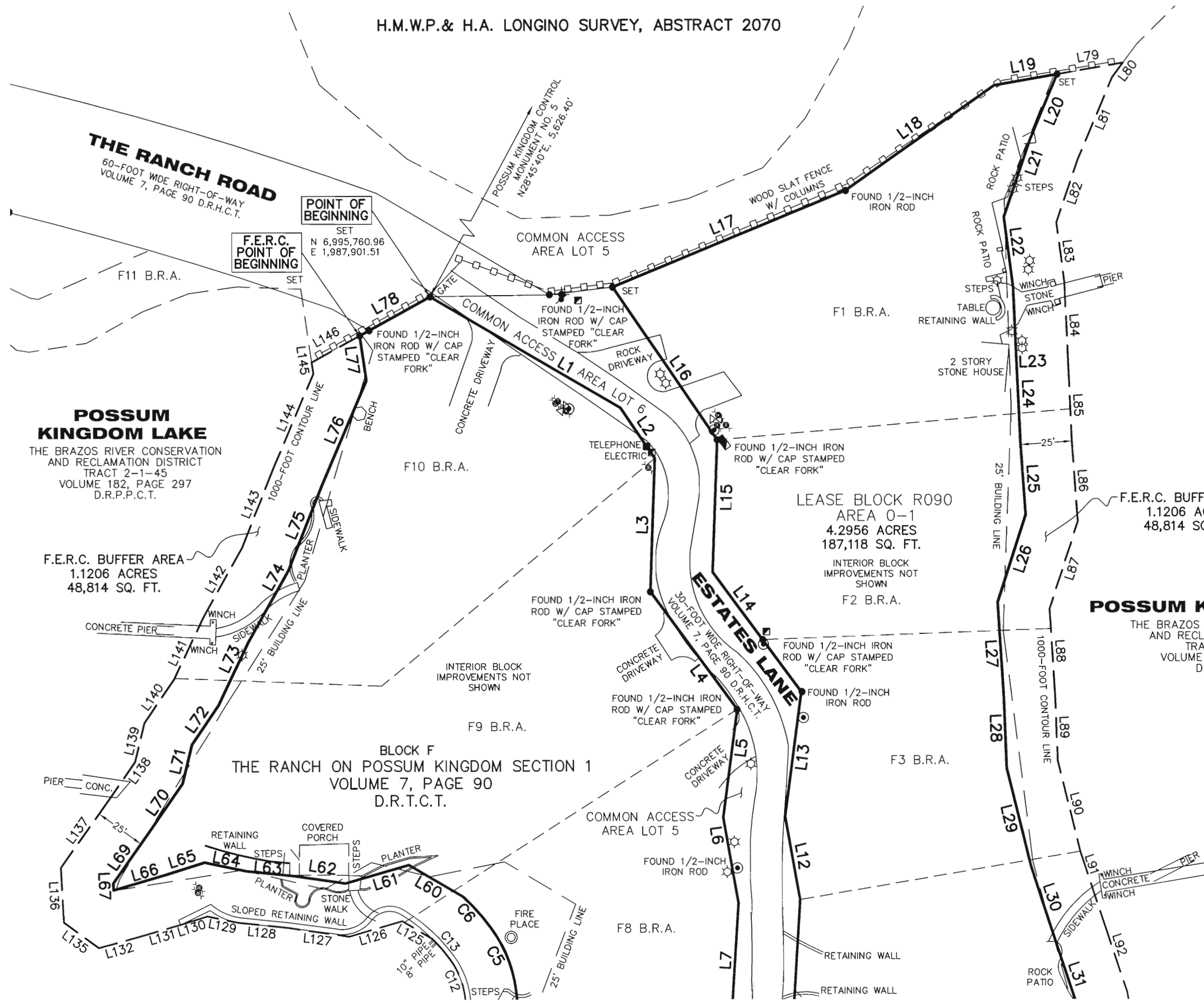
AECOM	AECOM USA GROUP, INC. 1200 SUMMIT AVENUE, SUITE 600 FORT WORTH, TEXAS 76102 WWW.AECOM.COM 817.698.6770	
	Date: 12/03/09	Project No. 60052528.103



(IN FEET)
1 inch = 50 ft.

LEGEND

- = LEASE CORNER MARKER "AS NOTED"
- = TELEPHONE BOX
- ⊕ = POST
- ⊙ = WATER METER
- ⊛ = LIGHT
- ⊙ = WATER VALVE
- ⊖ = FLAG POLE
- ⊗ = IRRIGATION CONTROL VALVE
- ⊕ = FIRE HYDRANT
- ⊙ = ELECTRIC BOX
- ⊗ = VALVE
- ⊙ = ELECTRIC METER



STANDARD LAND SURVEY
OF
5.4162 ACRES
AREA 0-1
LOTS F1 B.R.A. - F10 B.R.A., AND PART OF
COMMON ACCESS AREA LOT 6, BLOCK F
THE RANCH ON POSSUM KINGDOM LAKE
H.M.W.P.& H.A. LONGINO SURVEY,
ABSTRACT 2070
PALO PINTO COUNTY, TEXAS

AECOM	AECOM USA GROUP, INC. 1200 SUMMIT AVENUE, SUITE 600 FORT WORTH, TEXAS 76102 WWW.AECOM.COM 817.698.6770	
	Date: 12/03/09	Project No. 60052528.103

NO PART OR PARTS OF THIS DRAWING MAY BE REPRODUCED OR TRANSMITTED IN ANY WAY OR FORM (ELECTRONIC, MECHANICAL, PHOTOCOPYING, OR OTHERWISE) WITHOUT THE EXPRESS WRITTEN PERMISSION OF AECOM.

S:\Survey\Projects\60052528\3.0 Ref Docs\Drafting\Blocks\R090By.dwg 2/11/2010 6:04:32 AM CST

H.M.W.P. & H.A. LONGINO SURVEY, ABSTRACT 2070

POSSUM KINGDOM LAKE

THE BRAZOS RIVER CONSERVATION AND RECLAMATION DISTRICT
TRACT 2-1-45
VOLUME 182, PAGE 297
D.R.P.P.C.T.

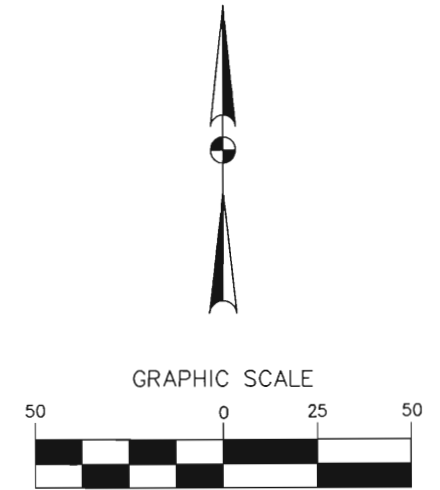
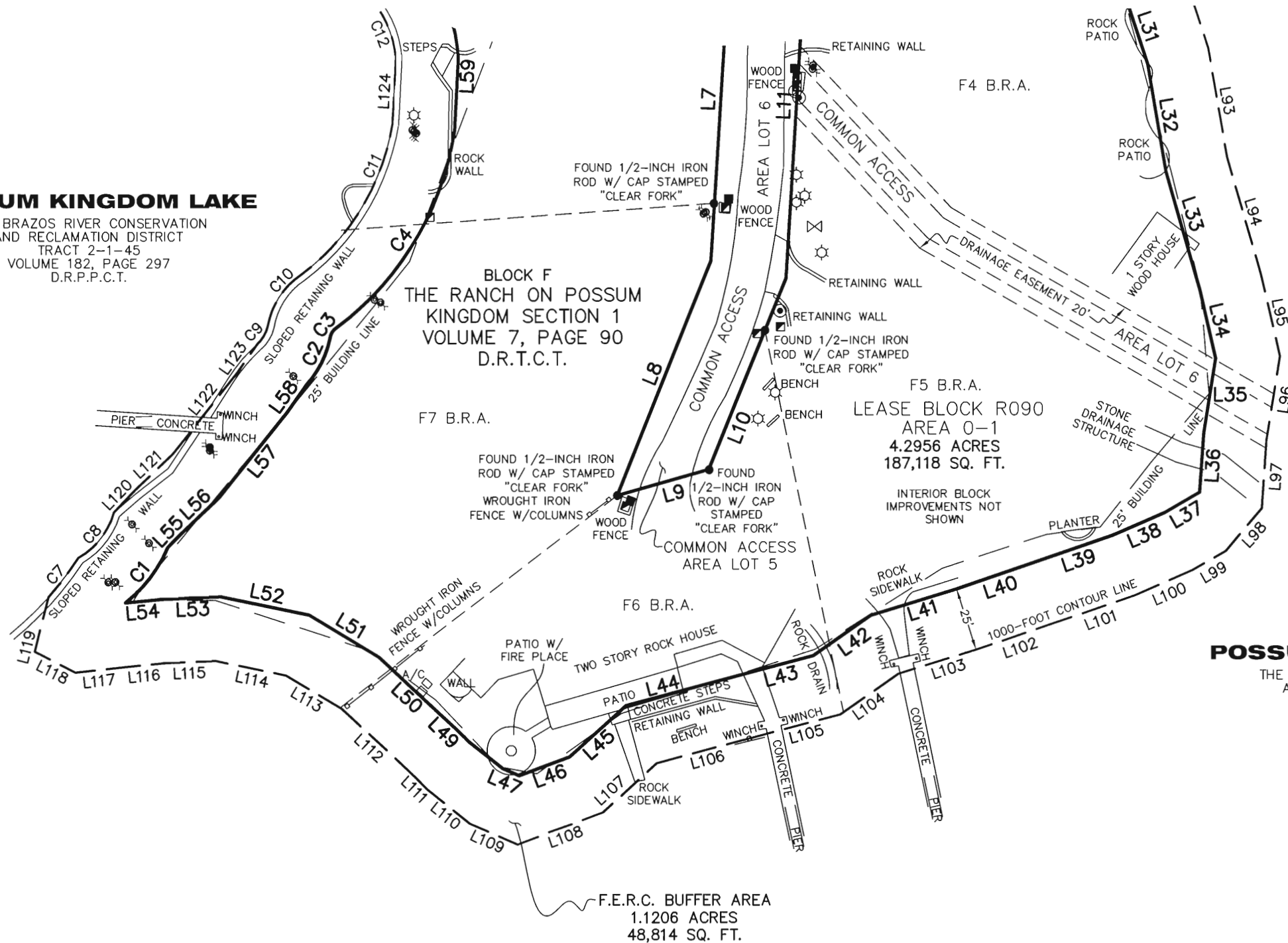
BLOCK F
THE RANCH ON POSSUM KINGDOM SECTION 1
VOLUME 7, PAGE 90
D.R.T.C.T.

POSSUM KINGDOM LAKE

THE BRAZOS RIVER CONSERVATION AND RECLAMATION DISTRICT
TRACT 2-1-45
VOLUME 182, PAGE 297
D.R.P.P.C.T.

STANDARD LAND SURVEY OF
OF
5.4162 ACRES
AREA 0-1

LOTS F1 B.R.A. - F10 B.R.A., AND PART OF
COMMON ACCESS AREA LOT 6, BLOCK F
THE RANCH ON POSSUM KINGDOM LAKE
H.M.W.P. & H.A. LONGINO SURVEY,
ABSTRACT 2070
PALO PINTO COUNTY, TEXAS



(IN FEET)
1 inch = 50 ft.

LEGEND

- = LEASE CORNER MARKER "AS NOTED"
- = TELEPHONE BOX
- ⊕ = POST
- ⊙ = WATER METER
- ⊗ = LIGHT
- ⊖ = WATER VALVE
- ⚑ = FLAG POLE
- ⊗ = IRRIGATION CONTROL VALVE
- ⊕ = FIRE HYDRANT
- ⊖ = ELECTRIC BOX
- ⊗ = VALVE
- ⊕ = ELECTRIC METER

AECOM

AECOM USA GROUP, INC.
1200 SUMMIT AVENUE, SUITE 600
FORT WORTH, TEXAS 76102
WWW.AECOM.COM
817.698.6770

NO PART OR PARTS OF THIS DRAWING MAY BE REPRODUCED OR TRANSMITTED IN ANY WAY OR FORM (ELECTRONIC, MECHANICAL, PHOTOCOPYING, OR OTHERWISE) WITHOUT THE EXPRESS WRITTEN PERMISSION OF AECOM.

S:\Survey\Projects\60052528\3.0 Ref Docs\Drafting\Blocks\R090\60052528_R090By.dwg 2/11/2010 6:04:32 AM CST