

LINE	BEARING	DISTANCE
L1	S86°31'40"E	46.85'
L2	S67°28'40"E	59.06'
L3	S68°19'05"E	45.92'
L4	S58°49'28"E	27.50'
L5	S44°38'35"E	34.27'
L6	S38°19'15"E	29.84'
L7	S34°46'34"E	45.96'
L8	S36°58'21"E	24.11'
L9	S36°47'49"E	17.92'
L10	S29°16'40"E	20.96'
L11	S18°19'34"E	56.36'
L12	S15°40'09"E	21.39'
L13	S02°35'20"W	48.24'
L14	S28°54'55"E	31.82'
L15	S17°56'02"E	28.86'
L16	S14°36'52"E	23.30'
L17	S13°20'00"E	28.27'
L18	S04°28'05"E	12.32'
L19	S01°53'20"E	22.67'
L20	S02°36'56"E	23.34'
L21	S08°39'39"W	38.36'
L22	S07°28'05"E	46.47'
L23	S06°35'15"E	33.17'
L24	S00°42'16"E	32.35'
L25	S17°17'08"W	11.73'
L26	S36°02'54"W	4.60'
L27	S45°21'23"W	11.59'
L28	S89°32'04"W	34.67'
L29	S70°25'41"W	38.67'
L30	S08°04'17"W	128.07'
L31	S16°17'40"W	28.23'
L32	S19°01'23"W	26.13'
L33	S28°50'38"W	29.69'
L34	S33°05'35"W	24.05'
L35	S41°01'49"W	33.64'
L36	S27°27'51"W	39.80'
L37	S35°19'49"W	48.24'
L38	S29°18'06"W	27.44'
L39	S28°29'09"W	49.82'
L40	S10°02'36"W	24.79'

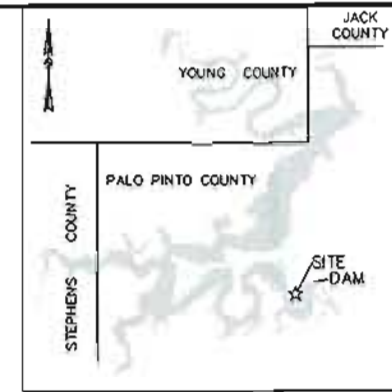
LINE	BEARING	DISTANCE
L41	S15°26'50"W	7.30'
L42	S33°27'58"W	5.99'
L43	S53°58'37"W	83.35'
L44	S02°26'40"E	54.47'
L45	S13°37'36"E	14.83'
L46	S01°07'46"W	26.60'
L47	S14°39'20"W	25.23'
L48	S11°27'45"W	24.02'
L49	S13°16'55"W	33.10'
L50	S14°21'44"W	51.22'
L51	S16°47'26"W	28.27'
L52	S16°10'46"W	26.71'
L53	S14°23'28"W	11.62'
L54	S48°00'14"W	3.52'
L55	S24°08'50"W	37.96'
L56	S36°45'43"W	20.40'
L57	S40°18'09"W	34.75'
L58	S25°38'11"W	61.26'
L59	S06°30'30"E	43.79'
L60	S24°31'24"E	23.65'
L61	S12°13'25"E	25.94'
L62	S01°59'40"E	21.59'
L63	S13°53'42"W	34.92'
L64	S02°34'28"W	33.62'
L65	S05°52'43"W	34.11'
L66	S16°11'19"W	23.36'
L67	S05°31'44"W	34.10'
L68	S20°04'23"W	11.90'
L69	S10°42'13"W	34.06'
L70	S11°55'39"W	15.57'
L71	S10°08'45"W	34.20'
L72	S02°19'11"E	38.38'
L73	S04°02'11"E	23.74'
L74	S09°20'36"W	28.81'
L75	S03°53'26"W	25.71'
L76	S09°26'30"W	36.66'
L77	S06°38'57"E	33.28'
L78	N87°38'11"W	26.18'
L79	S86°31'40"E	86.17'
L80	S67°28'40"E	18.58'

LINE	BEARING	DISTANCE
L81	S68°19'05"E	49.71'
L82	S58°49'28"E	37.87'
L83	S44°38'35"E	43.25'
L84	S38°19'15"E	34.15'
L85	S34°46'34"E	46.55'
L86	S36°58'21"E	23.23'
L87	S36°47'49"E	21.28'
L88	S29°16'40"E	29.04'
L89	S18°19'34"E	62.32'
L90	S15°40'09"E	30.58'
L91	S02°35'20"W	42.17'
L92	S28°54'55"E	22.52'
L93	S17°56'02"E	35.12'
L94	S13°53'32"E	58.01'
L95	S04°28'05"E	17.32'
L96	S02°17'02"E	51.43'
L97	S08°39'39"W	36.21'
L98	S07°02'56"E	75.89'
L99	S00°42'16"E	42.84'
L100	S17°17'08"W	27.90'
L101	S36°02'54"W	16.93'
L102	S45°21'23"W	35.95'
L103	S89°32'04"W	46.54'
L104	S04°50'07"W	68.94'
L105	S15°35'28"W	65.82'
L106	S19°01'23"W	31.62'
L107	S28°50'38"W	35.84'
L108	S33°05'35"W	29.37'
L109	S41°01'49"W	31.16'
L110	S27°27'51"W	37.29'
L111	S35°19'49"W	49.04'
L112	S28°47'21"W	65.80'
L113	S10°02'36"W	19.03'
L114	S15°26'50"W	17.58'
L115	S33°27'58"W	22.96'
L116	S53°58'37"W	65.57'
L117	S02°26'40"E	22.76'
L118	S13°37'36"E	16.41'
L119	S01°07'46"W	39.00'
L120	S14°39'20"W	29.77'

LINE	BEARING	DISTANCE
L121	S11°27'45"W	23.42'
L122	S13°16'55"W	34.37'
L123	S14°21'44"W	52.75'
L124	S16°30'14"W	54.73'
L125	S14°23'28"W	25.94'
L126	S48°00'14"W	8.06'
L127	S24°08'50"W	32.92'
L128	S36°45'43"W	27.47'
L129	S40°18'09"W	29.86'
L130	S25°38'11"W	40.42'
L131	S06°30'30"E	21.46'
L132	S24°31'24"E	21.11'
L133	S12°13'25"E	35.80'
L134	S01°59'40"E	33.05'
L135	S13°53'42"W	36.94'
L136	S02°34'28"W	30.11'
L137	S05°52'43"W	40.06'
L138	S16°11'19"W	23.21'
L139	S05°31'44"W	35.81'
L140	S20°04'23"W	14.18'
L141	S10°44'47"W	73.78'
L142	S02°19'11"E	32.17'
L143	S04°02'11"E	28.85'
L144	S09°20'36"W	32.29'
L145	S03°53'26"W	25.76'
L146	S09°26'30"W	32.02'
L147	S06°38'57"E	34.14'
L148	N87°38'11"W	50.63'

CURVE TABLE					
CURVE	LENGTH	DELTA	RADIUS	CHORD BEARING	CHORD
C1	48.67'	55°46'16"	50.00'	S39°35'32"E	46.77'

**ACREAGE TABLE**  
 LEASE BLOCK: 9.2157 ACRES  
 F.E.R.C. BUFFER AREA: 2.8288 ACRES  
 SURVEY BLOCK: 12.0445 ACRES TOTAL



VICINITY MAP  
NOT TO SCALE

**SURVEYORS CERTIFICATE**

TO: BRAZOS RIVER AUTHORITY, PATTERSON PK LAND PARTNERSHIP, LTD., AND HERITAGE TITLE COMPANY OF AUSTIN, INC.

I, JAMES T. MULLER, A REGISTERED PROFESSIONAL LAND SURVEYOR IN THE STATE OF TEXAS, REGISTRATION NUMBER 4522, HEREBY STATE THAT A SURVEY OF THE REAL PROPERTY DESCRIBED IN SEPARATE LEGAL DESCRIPTION AS NOTED HEREON, WAS ACTUALLY MADE UPON THE GROUND UNDER MY DIRECTION AND SUPERVISION, AND THAT TO THE BEST OF MY PROFESSIONAL KNOWLEDGE AND BELIEF, THE INFORMATION SHOWN HEREON IS CORRECT AS DETERMINED BY SAID SURVEY.

THIS SURVEY SUBSTANTIALLY COMPLIES WITH THE CURRENT TEXAS SOCIETY OF PROFESSIONAL SURVEYORS STANDARDS AND SPECIFICATIONS FOR A CATEGORY 1B, CONDITION II SURVEY.

JAMES T. MULLER  
REGISTERED PROFESSIONAL LAND SURVEYOR  
TEXAS REGISTRATION NO. 4522

DATE: FEBRUARY 12, 2010



**NOTES:**

- 1) BEARINGS AND COORDINATES SHOWN HEREON ARE BASED ON THE NORTH AMERICAN DATUM OF 1983, TEXAS COORDINATE SYSTEM, NORTH CENTRAL ZONE (4202).
- 2) 1,000-FOOT CONTOUR ELEVATION OF POSSUM KINGDOM LAKE IS DETERMINED BASED ON MEASUREMENTS FROM THE TOP OF THE EXISTING SPILLWAY CREST GATES AT THE MORRIS SHEPPARD DAM BEING AT ELEVATION 1,000- FEET ABOVE MEAN SEA LEVEL AS NOTED IN FEDERAL POWER COMMISSION REPORT PROJECT NO. 1490 - TEXAS ON JUNE 2, 1938.
- 3) SET = 5/8" IRON ROD W/CAP STAMPED "AECOM" SET; D.R.P.P.C.T.= DEED RECORDS, PALO PINTO COUNTY, TEXAS; P.R.P.P.C.T.= PLAT RECORDS, PALO PINTO COUNTY, TEXAS; F.E.R.C.= FEDERAL ENERGY REGULATORY COMMISSION; J.R.P.P.C.T.= JUDGEMENT RECORDS, PALO PINTO COUNTY, TEXAS.
- 4) METES AND BOUNDS DESCRIPTIONS TO ACCOMPANY THIS SURVEY.
- 5) THERE IS A 15' BUILDING OR SETBACK LINE AND A 10' UTILITY EASEMENT ON EACH SIDE OF ALL SIDE LOT LINES IN BLOCKS A, B, & C; COMMON AREAS, GREENBELT AREAS AND DRAINAGE EASEMENTS ARE ALSO DESIGNATED AS UTILITY EASEMENTS AS NOTED ON THE RANCH ON POSSUM KINGDOM SECTION 1 RECORDED IN VOLUME 7, PAGE 90 D.R.P.P.C.T.

**STANDARD LAND SURVEY  
OF**

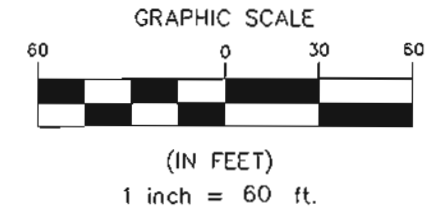
**12.0445 ACRES**

AREA 0-1

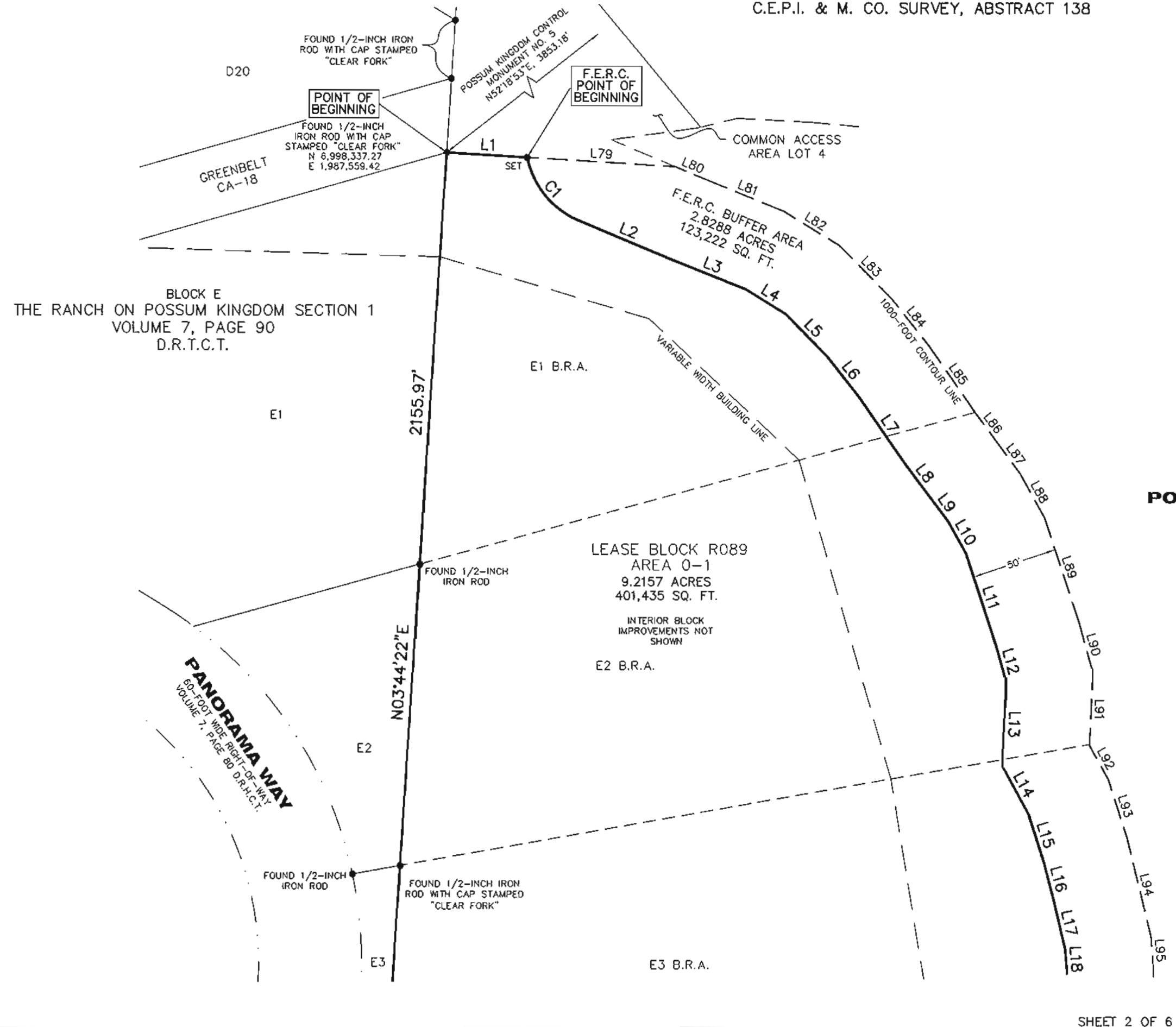
LOTS E1 B.R.A. - E7 B.R.A., BLOCK E  
 LOTS E11 B.R.A. - E16 B.R.A., BLOCK E  
 THE RANCH ON POSSUM KINGDOM LAKE  
 C.E.P.I. & M. CO. SURVEY, ABSTRACT 138  
 H.M.W.P. & H.A. LONGINO SURVEY,  
 ABSTRACT 2070  
 PALO PINTO COUNTY, TEXAS

**AECOM**

AECOM USA GROUP, INC.  
1200 SUMMIT AVENUE, SUITE 600  
FORT WORTH, TEXAS 76102  
WWW.AECOM.COM  
817.698.6770



- LEGEND**
- = LEASE CORNER MARKER "AS NOTED"
  - OH = OVERHEAD LINES
  - ☒ = ELECTRIC BOX
  - ⊗ = IRRIGATION CONTROL VALVE



**POSSUM KINGDOM LAKE**  
 THE BRAZOS RIVER CONSERVATION  
 AND RECLAMATION DISTRICT  
 TRACT 2-1-45  
 VOLUME 182, PAGE 297  
 D.R.P.P.C.T.

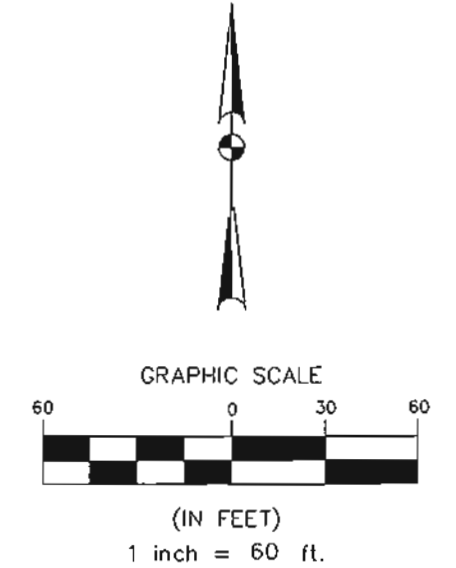
STANDARD LAND SURVEY  
 OF  
 12.0445 ACRES  
 AREA 0-1  
 LOTS E1 B.R.A. - E7 B.R.A., BLOCK E  
 LOTS E11 B.R.A. - E16 B.R.A., BLOCK E  
 THE RANCH ON POSSUM KINGDOM LAKE  
 C.E.P.I. & M. CO. SURVEY, ABSTRACT 138  
 H.M.W.P. & H.A. LONGINO SURVEY,  
 ABSTRACT 2070  
 PALO PINTO COUNTY, TEXAS

<b>AECOM</b>	AECOM USA GROUP, INC. 1200 SUMMIT AVENUE, SUITE 600 FORT WORTH, TEXAS 76102 WWW.AECOM.COM 817.698.6770	
	Date: 12/03/09	Project No. 60052528.103

NO PART OR PARTS OF THIS DRAWING MAY BE REPRODUCED OR TRANSMITTED IN ANY WAY OR FORM (ELECTRONIC, MECHANICAL, PHOTOCOPYING, OR OTHERWISE) WITHOUT THE EXPRESS WRITTEN PERMISSION OF AECOM.

S:\Survey\Projects\60052528\3.0 Ref Desa\Drafting\Blocks\R089\60052528\_R089By.dwg 2/26/2010 2:10:25 PM CST

BLOCK E  
THE RANCH ON POSSUM  
KINGDOM SECTION 1  
VOLUME 7, PAGE 90  
D.R.T.C.T.



- LEGEND**
- = LEASE CORNER MARKER "AS NOTED"
  - OH = OVERHEAD LINES
  - = ELECTRIC BOX
  - ⊗ = IRRIGATION CONTROL VALVE

**POSSUM KINGDOM LAKE**  
THE BRAZOS RIVER CONSERVATION  
AND RECLAMATION DISTRICT  
TRACT 2-1-45  
VOLUME 182, PAGE 297  
D.R.P.P.C.T.

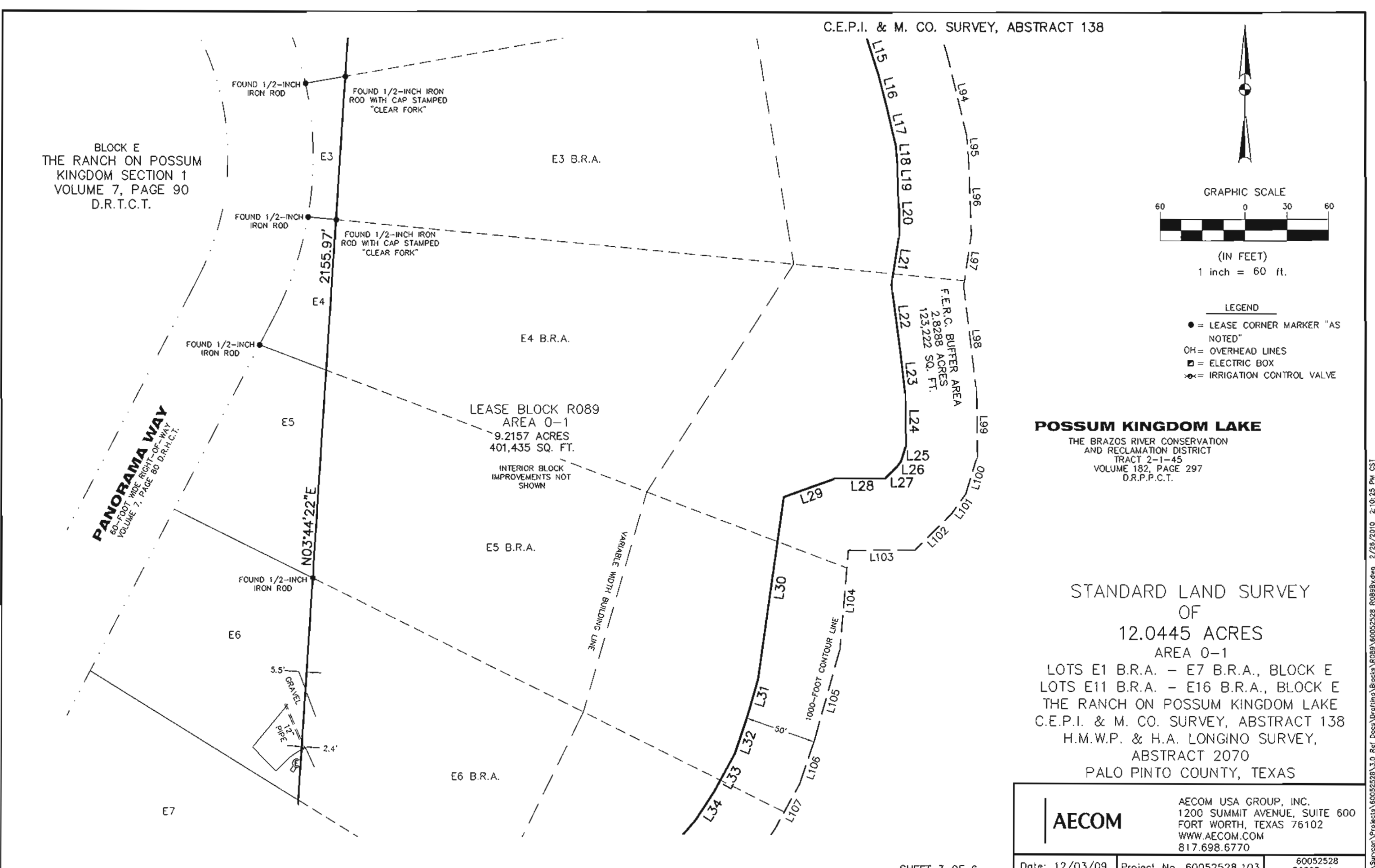
STANDARD LAND SURVEY  
OF  
12.0445 ACRES  
AREA 0-1

LOTS E1 B.R.A. - E7 B.R.A., BLOCK E  
LOTS E11 B.R.A. - E16 B.R.A., BLOCK E  
THE RANCH ON POSSUM KINGDOM LAKE  
C.E.P.I. & M. CO. SURVEY, ABSTRACT 138  
H.M.W.P. & H.A. LONGINO SURVEY,  
ABSTRACT 2070  
PALO PINTO COUNTY, TEXAS

<b>AECOM</b>	AECOM USA GROUP, INC. 1200 SUMMIT AVENUE, SUITE 600 FORT WORTH, TEXAS 76102 WWW.AECOM.COM 817.698.6770	
	Date: 12/03/09	Project No. 60052528.103

NO PART OR PARTS OF THIS DRAWING MAY BE REPRODUCED OR TRANSMITTED IN ANY WAY OR FORM (ELECTRONIC, MECHANICAL, PHOTOCOPYING, OR OTHERWISE) WITHOUT THE EXPRESS WRITTEN PERMISSION OF AECOM.

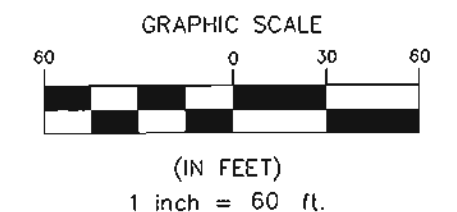
S:\Suncon\Projects\60052528\3.0 Ref Docs\Drawing\Blocks\R089\60052528\_R089By.dwg 2/26/2010 2:10:25 PM CST



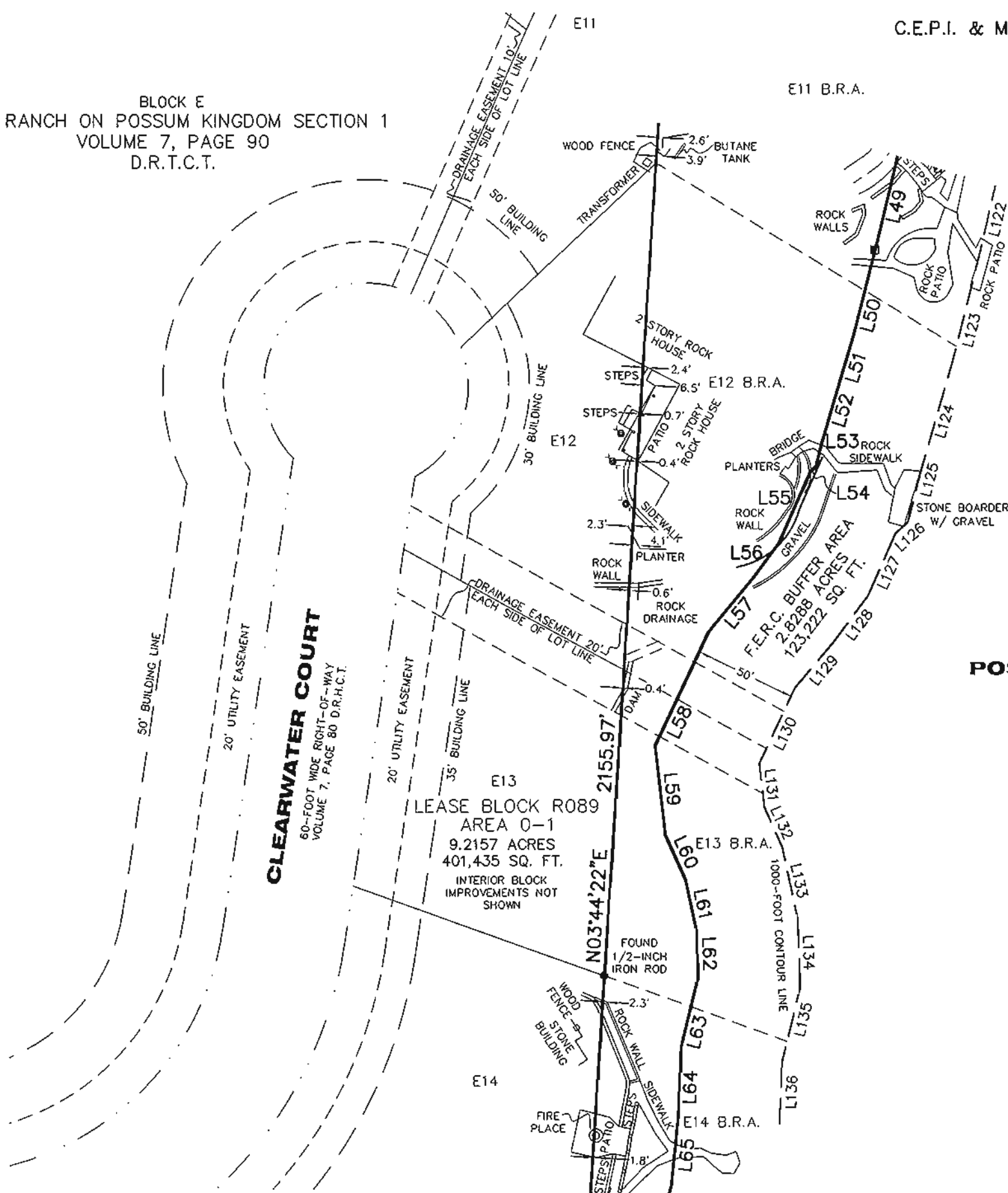


BLOCK E  
THE RANCH ON POSSUM KINGDOM SECTION 1  
VOLUME 7, PAGE 90  
D.R.T.C.T.

C.E.P.I. & M. CO. SURVEY, ABSTRACT 138



- LEGEND
- = LEASE CORNER MARKER "AS NOTED"
  - OH = OVERHEAD LINES
  - = ELECTRIC BOX
  - ⊗ = IRRIGATION CONTROL VALVE



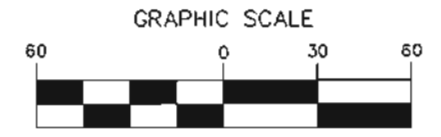
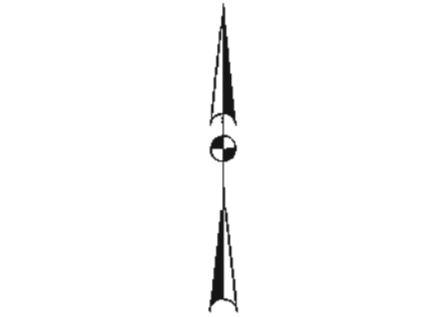
**POSSUM KINGDOM LAKE**  
THE BRAZOS RIVER CONSERVATION  
AND RECLAMATION DISTRICT  
TRACT 2-1-45  
VOLUME 182, PAGE 297  
D.R.P.P.C.T.

STANDARD LAND SURVEY  
OF  
12.0445 ACRES  
AREA 0-1  
LOTS E1 B.R.A. - E7 B.R.A., BLOCK E  
LOTS E11 B.R.A. - E16 B.R.A., BLOCK E  
THE RANCH ON POSSUM KINGDOM LAKE  
C.E.P.I. & M. CO. SURVEY, ABSTRACT 138  
H.M.W.P. & H.A. LONGINO SURVEY,  
ABSTRACT 2070  
PALO PINTO COUNTY, TEXAS

<b>AECOM</b>	AECOM USA GROUP, INC. 1200 SUMMIT AVENUE, SUITE 600 FORT WORTH, TEXAS 76102 WWW.AECOM.COM 817.698.6770	
	Date: 12/03/09	Project No. 60052528.103

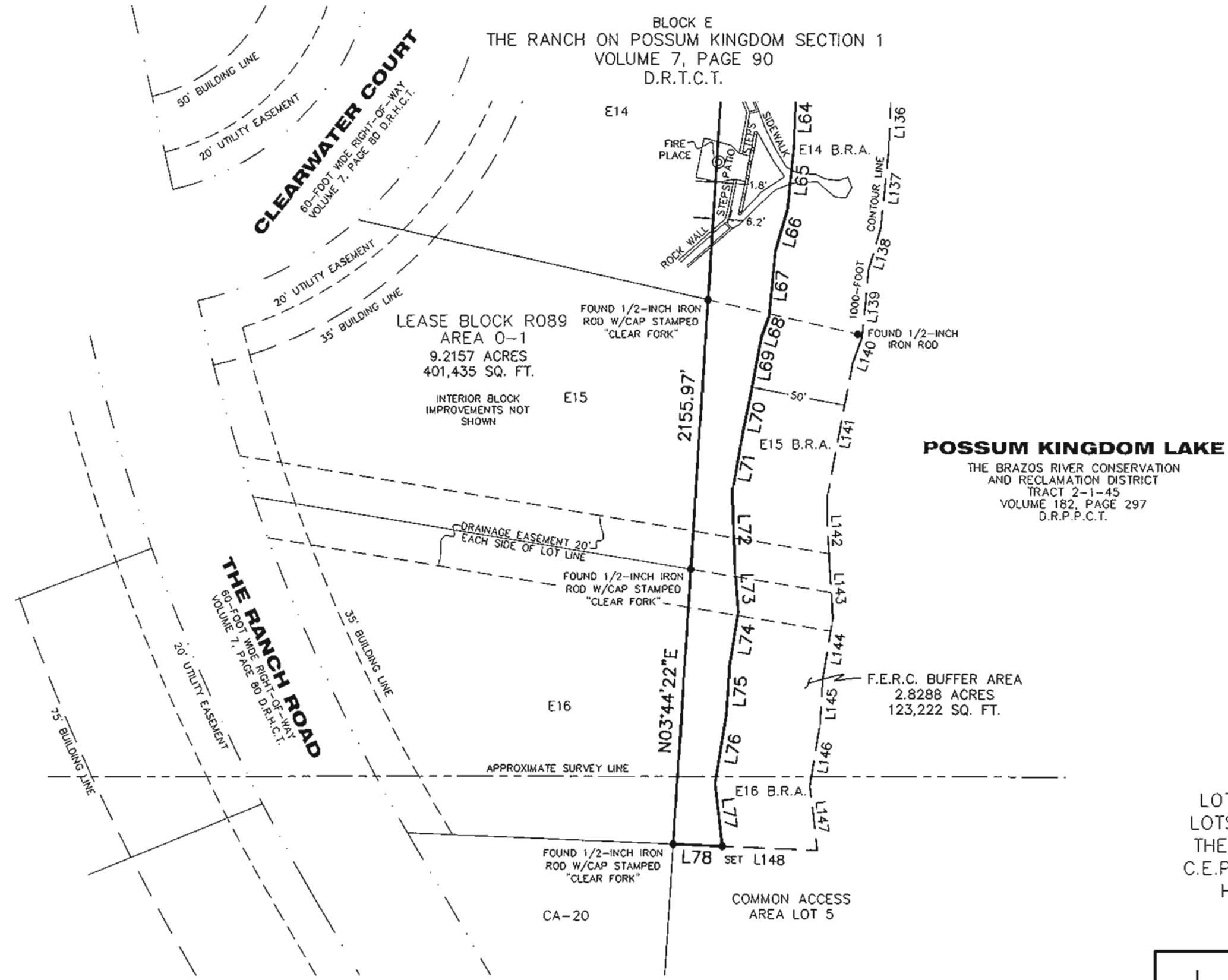
NO PART OR PARTS OF THIS DRAWING MAY BE REPRODUCED OR RETRANSMITTED IN ANY WAY OR FORM (ELECTRONIC, MECHANICAL, PHOTOCOPYING, OR OTHERWISE) WITHOUT THE EXPRESS WRITTEN PERMISSION OF AECOM.

S:\Survey\Projects\60052528\3.0 Ref Docs\Drafting\Blocks\R089\60052528\_R089B.dwg 2/26/2010 2:10:25 PM CST



(IN FEET)  
1 inch = 60 ft.

- LEGEND**
- = LEASE CORNER MARKER "AS NOTED"
  - OH= OVERHEAD LINES
  - = ELECTRIC BOX
  - ⊙ = IRRIGATION CONTROL VALVE



STANDARD LAND SURVEY  
OF  
12.0445 ACRES  
AREA 0-1  
LOTS E1 B.R.A. - E7 B.R.A., BLOCK E  
LOTS E11 B.R.A. - E16 B.R.A., BLOCK E  
THE RANCH ON POSSUM KINGDOM LAKE  
C.E.P.I. & M. CO. SURVEY, ABSTRACT 138  
H.M.W.P. & H.A. LONGINO SURVEY,  
ABSTRACT 2070  
PALO PINTO COUNTY, TEXAS

H.M.W.P. & H.A. LONGINO SURVEY, ABSTRACT 2070

<b>AECOM</b>	AECOM USA GROUP, INC. 1200 SUMMIT AVENUE, SUITE 600 FORT WORTH, TEXAS 76102 WWW.AECOM.COM 817.698.6770	
	Date: 12/03/09	Project No. 60052528.103
		60052528 R089By.dwg

NO PART OR PARTS OF THIS DRAWING MAY BE REPRODUCED OR TRANSMITTED IN ANY WAY OR FORM (ELECTRONIC, MECHANICAL, PHOTOCOPYING, OR OTHERWISE) WITHOUT THE EXPRESS WRITTEN PERMISSION OF AECOM.

S:\Survey\Projects\60052528\3.0 Ref Docs\Drafting\Blocks\RO89\60052528\_R089By.dwg 2/26/2010 2:10:25 PM CST