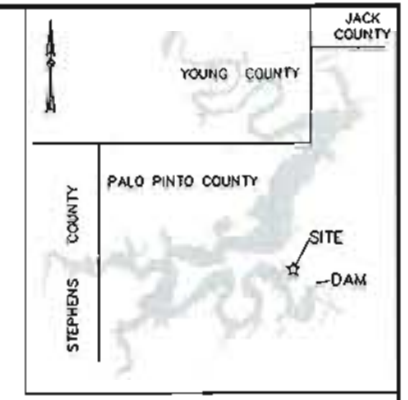


LINE TABLE			LINE TABLE			LINE TABLE			LINE TABLE			LINE TABLE			LINE TABLE		
LINE	BEARING	DISTANCE	LINE	BEARING	DISTANCE	LINE	BEARING	DISTANCE	LINE	BEARING	DISTANCE	LINE	BEARING	DISTANCE	LINE	BEARING	DISTANCE
L1	S19°24'08"E	55.72'	L41	N09°48'44"W	25.89'	L81	N82°14'15"W	50.04'	L121	S63°28'13"W	29.70'	L161	N05°47'37"E	22.12'	L201	S84°11'39"W	30.22'
L2	S43°48'42"W	37.79'	L42	N05°04'01"W	29.05'	L82	N82°08'41"W	34.84'	L122	S44°02'30"W	37.08'	L162	N14°47'37"E	34.66'	L202	N82°37'11"W	24.21'
L3	S68°19'58"W	14.54'	L43	N03°37'39"W	44.06'	L83	N79°04'02"W	41.48'	L123	S58°37'38"W	34.23'	L163	N30°47'58"E	36.69'	L203	N78°50'56"W	35.04'
L4	S62°59'49"W	46.59'	L44	N04°50'15"W	40.34'	L84	S84°11'39"W	31.80'	L124	S43°49'40"W	41.55'	L164	N45°43'52"E	32.32'	L204	N74°15'52"W	37.20'
L5	S63°28'13"W	38.06'	L45	N14°59'23"W	24.98'	L85	N82°37'11"W	15.91'	L125	S58°02'59"W	34.64'	L165	N36°25'14"E	30.05'	L205	N68°12'15"W	54.54'
L6	S44°02'30"W	39.24'	L46	N05°47'37"E	9.02'	L86	N76°50'56"W	31.40'	L126	S57°06'23"W	54.98'	L166	N34°40'11"E	38.60'	L206	N60°52'28"W	30.55'
L7	S58°37'38"W	34.32'	L47	N14°47'37"E	23.70'	L87	N74°15'52"W	33.43'	L127	S63°54'15"W	38.28'	L167	N07°17'16"E	25.14'	L207	N40°19'07"W	27.15'
L8	S43°49'40"W	41.80'	L48	N30°47'58"E	23.11'	L88	N68°12'15"W	48.69'	L128	S43°46'34"W	36.09'	L168	N10°17'17"E	28.03'	L208	N44°02'46"W	35.90'
L9	S58°02'59"W	28.81'	L49	N45°43'52"E	29.84'	L89	N60°52'28"W	18.28'	L129	S66°44'27"W	40.94'	L169	N07°53'01"E	34.62'	L209	N56°56'33"W	27.17'
L10	S57°06'23"W	52.42'	L50	N36°25'14"E	34.89'	L90	N40°19'07"W	19.71'	L130	S45°09'48"W	43.41'	L170	N04°47'40"E	27.09'	L210	N69°01'10"W	23.39'
L11	S63°54'15"W	44.19'	L51	N34°40'11"E	51.55'	L91	N44°02'46"W	43.18'	L131	S57°21'25"W	33.43'	L171	N02°38'22"E	46.21'	L211	N78°34'50"W	31.12'
L12	S43°46'34"W	34.80'	L52	N07°17'16"E	36.01'	L92	N56°56'33"W	38.11'	L132	S66°27'20"W	34.42'	L172	N25°41'31"E	8.63'	L212	N73°06'30"W	35.53'
L13	S66°44'27"W	40.31'	L53	N10°17'17"E	27.77'	L93	N69°01'10"W	32.86'	L133	S85°11'54"W	36.29'	L173	N14°39'54"W	7.87'	L213	N77°38'52"W	21.33'
L14	S45°09'48"W	47.60'	L54	N07°53'01"E	37.01'	L94	N78°34'50"W	32.91'	L134	N60°34'54"W	35.86'	L174	N02°36'29"E	12.09'	L214	N52°22'09"W	15.20'
L15	S57°21'25"W	24.11'	L55	N04°47'40"E	29.38'	L95	N73°06'30"W	35.12'	L135	N31°03'03"W	14.65'	L175	S83°23'18"W	16.55'	L215	N58°12'05"W	27.48'
L16	S66°27'20"W	22.19'	L56	N02°38'22"E	36.95'	L96	N77°38'52"W	12.10'	L136	N40°01'50"W	27.37'	L176	N39°17'15"W	13.68'	L216	N65°39'56"W	16.96'
L17	S85°11'54"W	12.65'	L57	N25°41'31"E	16.81'	L97	N52°22'09"W	6.53'	L137	N31°42'02"W	31.96'	L177	N59°36'24"W	13.13'	L217	S34°57'39"E	9.81'
L18	N60°34'54"W	7.29'	L58	N14°39'54"W	18.65'	L98	N58°12'05"W	33.29'	L138	N29°35'10"W	68.18'	L178	S16°09'18"W	10.00'	L218	S28°19'14"E	32.56'
L19	N31°03'03"W	5.40'	L59	N02°36'29"E	4.49'	L99	N65°39'56"W	20.22'	L139	N17°28'16"W	35.10'	L179	S09°23'10"W	21.27'	L219	S34°14'43"E	26.80'
L20	N40°01'50"W	27.65'	L60	N70°55'59"W	23.57'	L100	S34°57'39"E	6.91'	L140	N29°48'06"W	28.47'	L180	S02°37'29"E	20.85'	L220	S52°37'10"E	34.79'
L21	N31°42'02"W	27.05'	L61	S16°09'18"W	12.96'	L101	S28°19'14"E	32.25'	L141	S74°55'56"W	17.55'	L181	S09°59'57"W	37.13'	L221	S61°56'10"E	36.73'
L22	N28°48'21"W	37.95'	L62	S09°23'10"W	29.48'	L102	S34°14'43"E	37.47'	L142	N76°09'10"W	27.85'	L182	S15°39'20"W	21.18'	L222	S48°53'25"E	30.76'
L23	N30°35'37"W	24.79'	L63	S02°37'29"E	20.58'	L103	S52°37'10"E	46.95'	L143	N68°36'15"W	37.25'	L183	S29°57'54"W	26.88'	L223	S29°33'19"E	19.59'
L24	N17°28'16"W	34.75'	L64	S09°59'57"W	29.13'	L104	S61°56'10"E	35.09'	L144	N59°14'29"W	25.21'	L184	S37°04'44"W	19.05'	L224	S22°20'20"E	25.85'
L25	N29°48'06"W	72.43'	L65	S15°39'20"W	12.44'	L105	S48°53'25"E	16.52'	L145	N62°42'38"W	28.22'	L185	S44°25'00"W	32.02'	L225	S32°13'48"E	6.95'
L26	S74°55'56"W	43.21'	L66	S29°57'54"W	17.49'	L106	S29°33'19"E	7.92'	L146	N72°28'57"W	34.28'	L186	S54°53'51"W	28.57'	L226	S08°31'51"E	14.76'
L27	N76°09'10"W	11.66'	L67	S37°04'44"W	12.74'	L107	S22°20'20"E	27.02'	L147	N54°18'08"W	24.97'	L187	S63°45'54"W	22.13'	L227	S04°31'14"E	17.56'
L28	N68°36'15"W	29.85'	L68	S44°25'00"W	24.22'	L108	S32°13'48"E	0.78'	L148	N61°11'39"W	26.05'	L188	S61°33'34"W	27.15'	L228	S10°09'05"W	24.09'
L29	N59°14'29"W	22.63'	L69	S54°53'51"W	20.10'	L109	S08°31'51"E	2.52'	L149	N49°18'06"W	26.35'	L189	S45°08'11"W	55.93'	L229	S28°50'05"W	139.48'
L30	N62°42'38"W	34.01'	L70	S63°45'54"W	19.22'	L110	S04°31'14"E	9.37'	L150	N56°56'29"W	30.31'	L190	S34°43'05"W	33.02'			
L31	N72°28'57"W	30.56'	L71	S61°33'34"W	35.32'	L111	S10°09'05"W	16.39'	L151	N55°55'15"W	27.77'	L191	S26°51'12"W	25.70'			
L32	N54°18'08"W	19.98'	L72	S45°08'11"W	67.70'	L112	S21°14'13"W	31.64'	L152	N48°34'50"W	30.93'	L192	S21°18'21"W	29.99'			
L33	N61°11'39"W	23.85'	L73	S34°43'05"W	41.02'	L113	S17°29'09"W	29.10'	L153	N37°10'03"W	59.68'	L193	S20°21'10"W	49.27'			
L34	N49°18'06"W	24.48'	L74	S26°51'12"W	31.56'	L114	S18°43'31"W	22.17'	L154	N27°42'58"W	31.55'	L194	S20°34'28"W	31.49'			
L35	N56°56'29"W	33.21'	L75	S21°18'21"W	32.82'	L115	S14°19'59"W	8.57'	L155	N07°09'39"W	39.10'	L195	S40°24'23"W	29.14'			
L36	N55°55'15"W	24.11'	L76	S20°21'10"W	49.58'	L116	S28°50'05"W	21.29'	L156	N09°48'44"W	26.81'	L196	S66°03'09"W	24.83'			
L37	N48°34'50"W	22.72'	L77	S20°34'28"W	22.65'	L117	S19°24'08"E	56.01'	L157	N05°04'01"W	31.75'	L197	N86°57'02"W	21.16'			
L38	N37°10'03"W	50.55'	L78	S40°24'23"W	9.02'	L118	S43°48'42"W	23.42'	L158	N03°37'39"W	44.16'	L198	N82°14'15"W	52.14'			
L39	N27°42'58"W	18.35'	L79	S66°03'09"W	1.45'	L119	S68°19'58"W	23.08'	L159	N04°50'15"W	35.37'	L199	N82°08'41"W	36.22'			
L40	N07°09'39"W	31.19'	L80	N86°57'02"W	7.10'	L120	S62°59'49"W	44.47'	L160	N14°59'23"W	29.71'	L200	N79°04'02"W	35.47'			



VICINITY MAP NOT TO SCALE

ACREAGE TABLE	
LEASE BLOCK:	10.8483 ACRES
F.E.R.C. BUFFER AREA:	3.9691 ACRES
SURVEY BLOCK:	14.8174 ACRES TOTAL

CURVE TABLE					
CURVE	LENGTH	DELTA	RADIUS	CHORD BEARING	CHORD
C1	64.18'	73°32'28"	50.00'	N34°09'45"W	59.86'
C2	97.24'	111°25'27"	50.00'	S71°52'02"W	82.62'
C3	130.28'	149°17'44"	50.00'	S39°41'13"W	96.43'
C4	48.98'	56°07'39"	50.00'	S13°43'51"E	47.05'

SURVEYORS CERTIFICATE

TO: BRAZOS RIVER AUTHORITY, PATTERSON PK LAND PARTNERSHIP, LTD., AND HERITAGE TITLE COMPANY OF AUSTIN, INC.

I, JAMES T. MULLER, A REGISTERED PROFESSIONAL LAND SURVEYOR IN THE STATE OF TEXAS, REGISTRATION NUMBER 4522, HEREBY STATE THAT A SURVEY OF THE REAL PROPERTY DESCRIBED IN SEPARATE LEGAL DESCRIPTION AS NOTED HEREON, WAS ACTUALLY MADE UPON THE GROUND UNDER MY DIRECTION AND SUPERVISION, AND THAT TO THE BEST OF MY PROFESSIONAL KNOWLEDGE AND BELIEF, THE INFORMATION SHOWN HEREON IS CORRECT AS DETERMINED BY SAID SURVEY.

THIS SURVEY SUBSTANTIALLY COMPLIES WITH THE CURRENT TEXAS SOCIETY OF PROFESSIONAL SURVEYORS STANDARDS AND SPECIFICATIONS FOR A CATEGORY 1B, CONDITION II SURVEY.

JAMES T. MULLER
REGISTERED PROFESSIONAL LAND SURVEYOR
TEXAS REGISTRATION NO. 4522



DATE: FEBRUARY 12, 2010

NOTES:

1) BEARINGS AND COORDINATES SHOWN HEREON ARE BASED ON THE NORTH AMERICAN DATUM OF 1983, TEXAS COORDINATE SYSTEM, NORTH CENTRAL ZONE (4202).

2) 1,000-FOOT CONTOUR ELEVATION OF POSSUM KINGDOM LAKE IS DETERMINED BASED ON MEASUREMENTS FROM THE TOP OF THE EXISTING SPILLWAY CREST GATES AT THE MORRIS SHEPPARD DAM BEING AT ELEVATION 1,000- FEET ABOVE MEAN SEA LEVEL AS NOTED IN FEDERAL POWER COMMISSION REPORT PROJECT NO. 1490 - TEXAS ON JUNE 2, 1938.

3) SET = 5/8" IRON ROD W/CAP STAMPED "AECOM" SET; D.R.P.P.C.T.= DEED RECORDS, PALO PINTO COUNTY, TEXAS; P.R.P.P.C.T.= PLAT RECORDS, PALO PINTO COUNTY, TEXAS; F.E.R.C.= FEDERAL ENERGY REGULATORY COMMISSION; J.R.P.P.C.T.= JUDGEMENT RECORDS, PALO PINTO COUNTY, TEXAS.

4) METES AND BOUNDS DESCRIPTIONS TO ACCOMPANY THIS SURVEY.

5) THERE IS A 15' BUILDING OR SETBACK LINE AND A 10' UTILITY EASEMENT ON EACH SIDE OF ALL SIDE LOT LINES IN BLOCKS A, B, & C; COMMON AREAS, GREENBELT AREAS AND DRAINAGE EASEMENTS ARE ALSO DESIGNATED AS UTILITY EASEMENTS AS NOTED ON THE RANCH ON POSSUM KINGDOM SECTION 1 RECORDED IN VOLUME 7, PAGE 90 D.R.P.P.C.T.

STANDARD LAND SURVEY OF 14.8174 ACRES

LOTS A1 B.R.A. - A7 B.R.A., BLOCK A
LOTS A9 B.R.A. & A10 B.R.A., BLOCK A
LOTS B3 B.R.A. - B8 B.R.A., BLOCK B
LOTS C2 B.R.A. - C4 B.R.A., BLOCK C
COMMON ACCESS AREA LOTS 1 & 2
THE RANCH ON POSSUM KINGDOM LAKE
C.E.P.I. & M. CO. SURVEY, ABSTRACT 138
B.B.B. & C.R.R. CO. SURVEY, ABSTRACT 103
PALO PINTO COUNTY, TEXAS

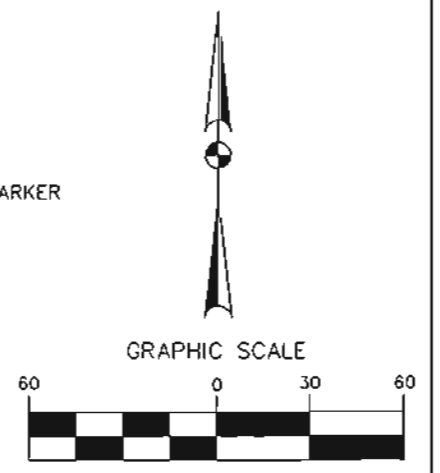


AECOM USA GROUP, INC.
1200 SUMMIT AVENUE, SUITE 600
FORT WORTH, TEXAS 76102
WWW.AECOM.COM
817.698.6770

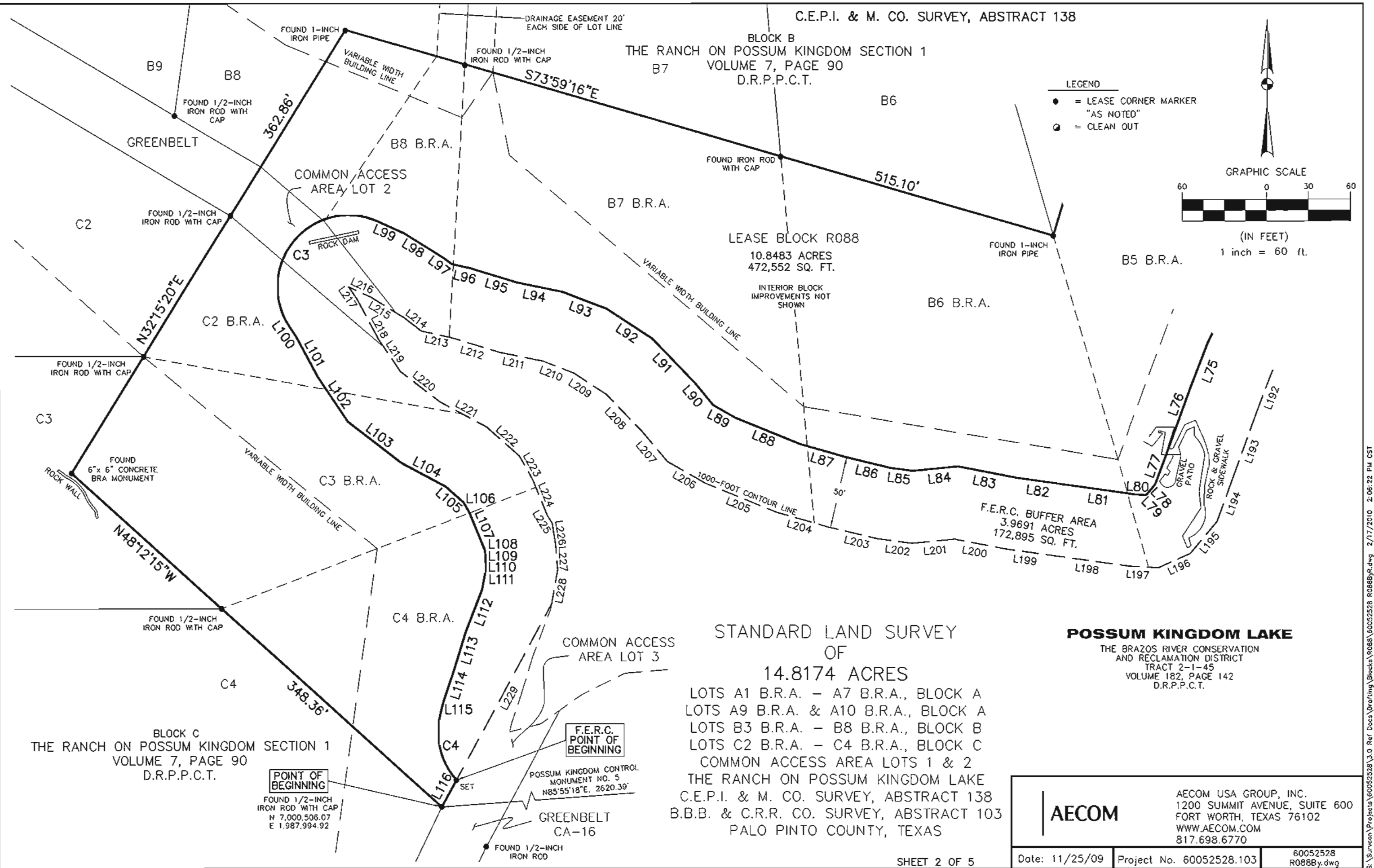
Date: 11/25/09 Project No. 60052528.103 60052528 R0888y.dwg

BLOCK B
THE RANCH ON POSSUM KINGDOM SECTION 1
VOLUME 7, PAGE 90
D.R.P.P.C.T.

LEGEND
● = LEASE CORNER MARKER
"AS NOTED"
○ = CLEAN OUT



(IN FEET)
1 inch = 60 ft.



BLOCK C
THE RANCH ON POSSUM KINGDOM SECTION 1
VOLUME 7, PAGE 90
D.R.P.P.C.T.

POINT OF BEGINNING
FOUND 1/2-INCH IRON ROD WITH CAP
N 7,000.506.07
E 1,987.994.92

F.E.R.C. POINT OF BEGINNING

POSSUM KINGDOM CONTROL MONUMENT NO. 5
N85°55'18"E. 2620.39'

GREENBELT CA-16

STANDARD LAND SURVEY OF
14.8174 ACRES
LOTS A1 B.R.A. - A7 B.R.A., BLOCK A
LOTS A9 B.R.A. & A10 B.R.A., BLOCK A
LOTS B3 B.R.A. - B8 B.R.A., BLOCK B
LOTS C2 B.R.A. - C4 B.R.A., BLOCK C
COMMON ACCESS AREA LOTS 1 & 2
THE RANCH ON POSSUM KINGDOM LAKE
C.E.P.I. & M. CO. SURVEY, ABSTRACT 138
B.B.B. & C.R.R. CO. SURVEY, ABSTRACT 103
PALO PINTO COUNTY, TEXAS

POSSUM KINGDOM LAKE
THE BRAZOS RIVER CONSERVATION AND RECLAMATION DISTRICT
TRACT 2-1-45
VOLUME 182, PAGE 142
D.R.P.P.C.T.

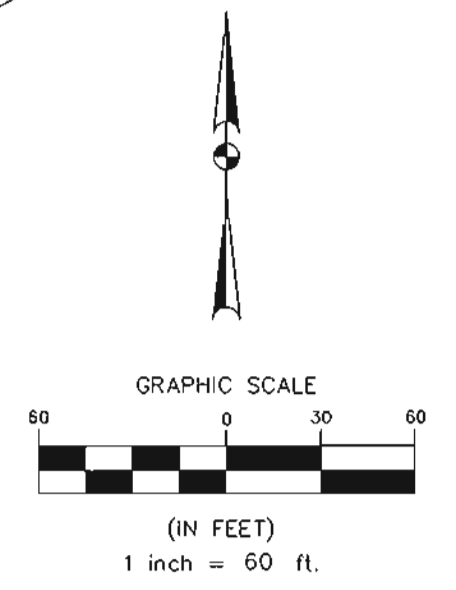
AECOM
AECOM USA GROUP, INC.
1200 SUMMIT AVENUE, SUITE 600
FORT WORTH, TEXAS 76102
WWW.AECOM.COM
817.698.6770

Date: 11/25/09 Project No. 60052528.103 60052528 R088By.dwg

NO PART OR PARTS OF THIS DRAWING MAY BE REPRODUCED OR RETRANSMITTED IN ANY WAY OR FORM (ELECTRONIC, MECHANICAL, PHOTOCOPIING, OR OTHERWISE) WITHOUT THE EXPRESS WRITTEN PERMISSION OF AECOM.

S:\Survey\Projects\60052528\3.0 Ref Docs\Drafting\Blocks\R088\60052528 R088By.dwg 2/17/2010 2:06:22 PM CST

BLOCK B
THE RANCH ON POSSUM KINGDOM SECTION 1
VOLUME 7, PAGE 90
D.R.P.P.C.T.



- LEGEND
- = LEASE CORNER MARKER "AS NOTED"
 - = CLEAN OUT

LEASE BLOCK R088
10.8483 ACRES
472,552 SQ. FT.
INTERIOR BLOCK
IMPROVEMENTS NOT
SHOWN
B4 B.R.A.

BLOCK A
THE RANCH ON POSSUM KINGDOM SECTION 1
VOLUME 7, PAGE 90
D.R.P.P.C.T.

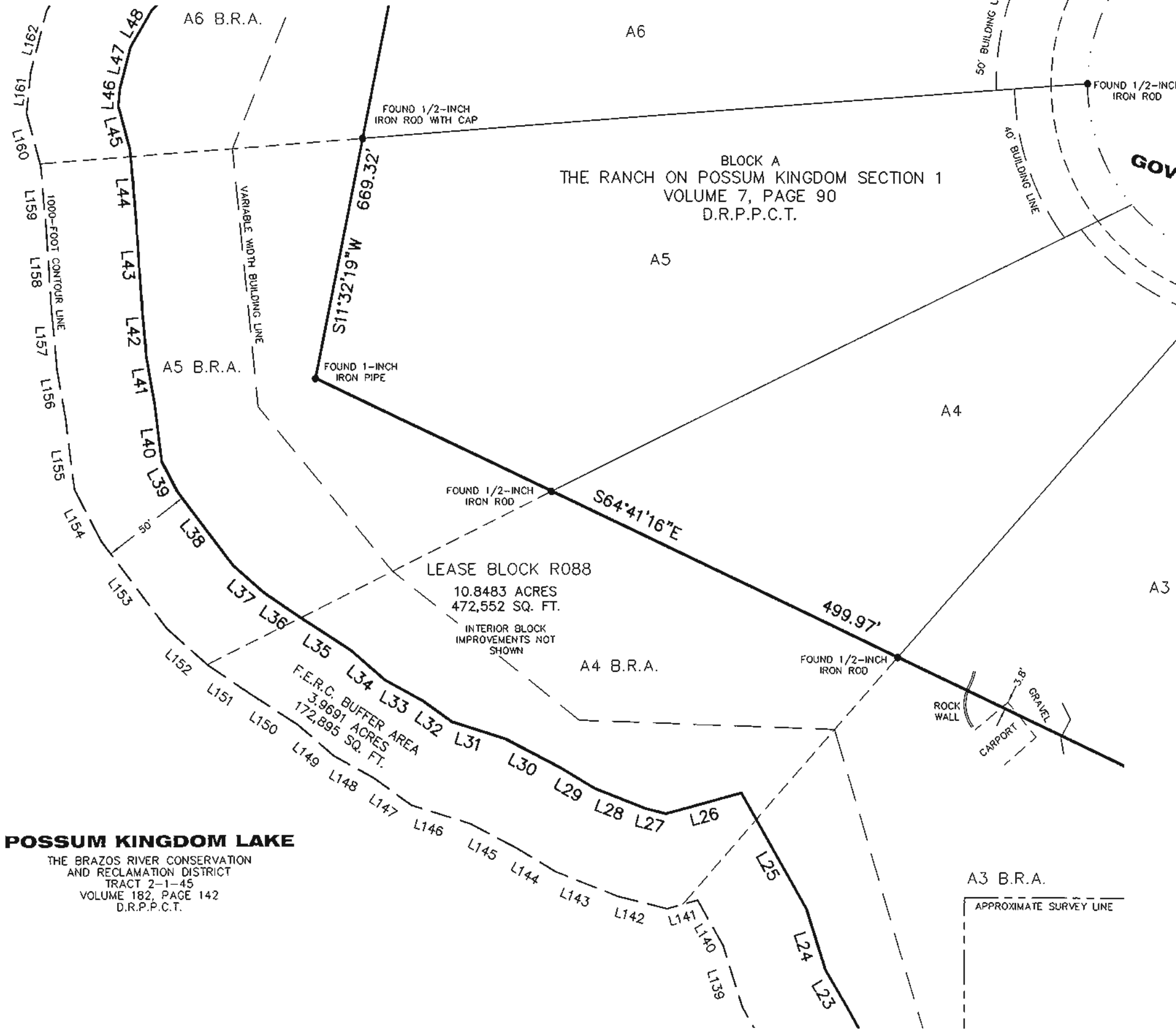
STANDARD LAND SURVEY
OF
14.8174 ACRES

LOTS A1 B.R.A. - A7 B.R.A., BLOCK A
LOTS A9 B.R.A. & A10 B.R.A., BLOCK A
LOTS B3 B.R.A. - B8 B.R.A., BLOCK B
LOTS C2 B.R.A. - C4 B.R.A., BLOCK C
COMMON ACCESS AREA LOTS 1 & 2
THE RANCH ON POSSUM KINGDOM LAKE
C.E.P.I. & M. CO. SURVEY, ABSTRACT 138
B.B.B. & C.R.R. CO. SURVEY, ABSTRACT 103
PALO PINTO COUNTY, TEXAS

AECOM	AECOM USA GROUP, INC. 1200 SUMMIT AVENUE, SUITE 600 FORT WORTH, TEXAS 76102 WWW.AECOM.COM 817.698.6770	
	Date: 11/25/09	Project No. 60052528.103

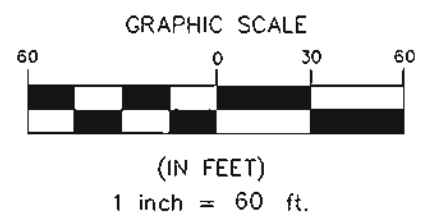
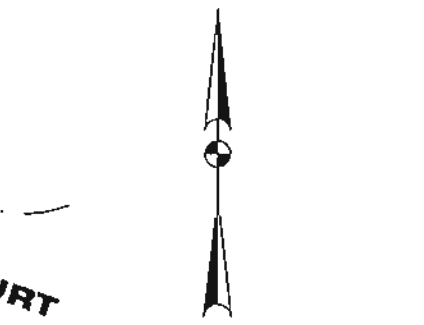
NO PART OR PARTS OF THIS DRAWING MAY BE REPRODUCED OR TRANSMITTED IN ANY WAY OR FORM (ELECTRONIC, MECHANICAL, PHOTOCOPIING, OR OTHERWISE) WITHOUT THE EXPRESS WRITTEN PERMISSION OF AECOM

S:\Source\Projects\60052528\3.0 Ref Docs\Drafting\Blocks\60052528 R088B.R.dwg 2/17/2010 2:06:22 PM CST



POSSUM KINGDOM LAKE
 THE BRAZOS RIVER CONSERVATION
 AND RECLAMATION DISTRICT
 TRACT 2-1-45
 VOLUME 182, PAGE 142
 D.R.P.P.C.T.

STANDARD LAND SURVEY
 OF
 14.8174 ACRES
 LOTS A1 B.R.A. - A7 B.R.A., BLOCK A
 LOTS A9 B.R.A. & A10 B.R.A., BLOCK A
 LOTS B3 B.R.A. - B8 B.R.A., BLOCK B
 LOTS C2 B.R.A. - C4 B.R.A., BLOCK C
 COMMON ACCESS AREA LOTS 1 & 2
 THE RANCH ON POSSUM KINGDOM LAKE
 C.E.P.I. & M. CO. SURVEY, ABSTRACT 138
 B.B.B. & C.R.R. CO. SURVEY, ABSTRACT 103
 PALO PINTO COUNTY, TEXAS



- LEGEND
- = LEASE CORNER MARKER "AS NOTED"
 - = CLEAN OUT

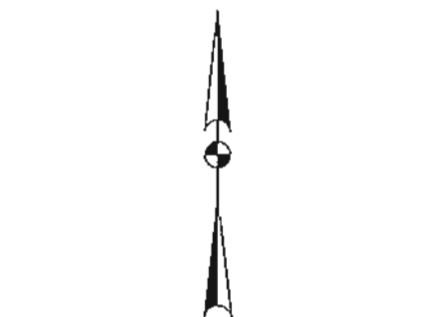
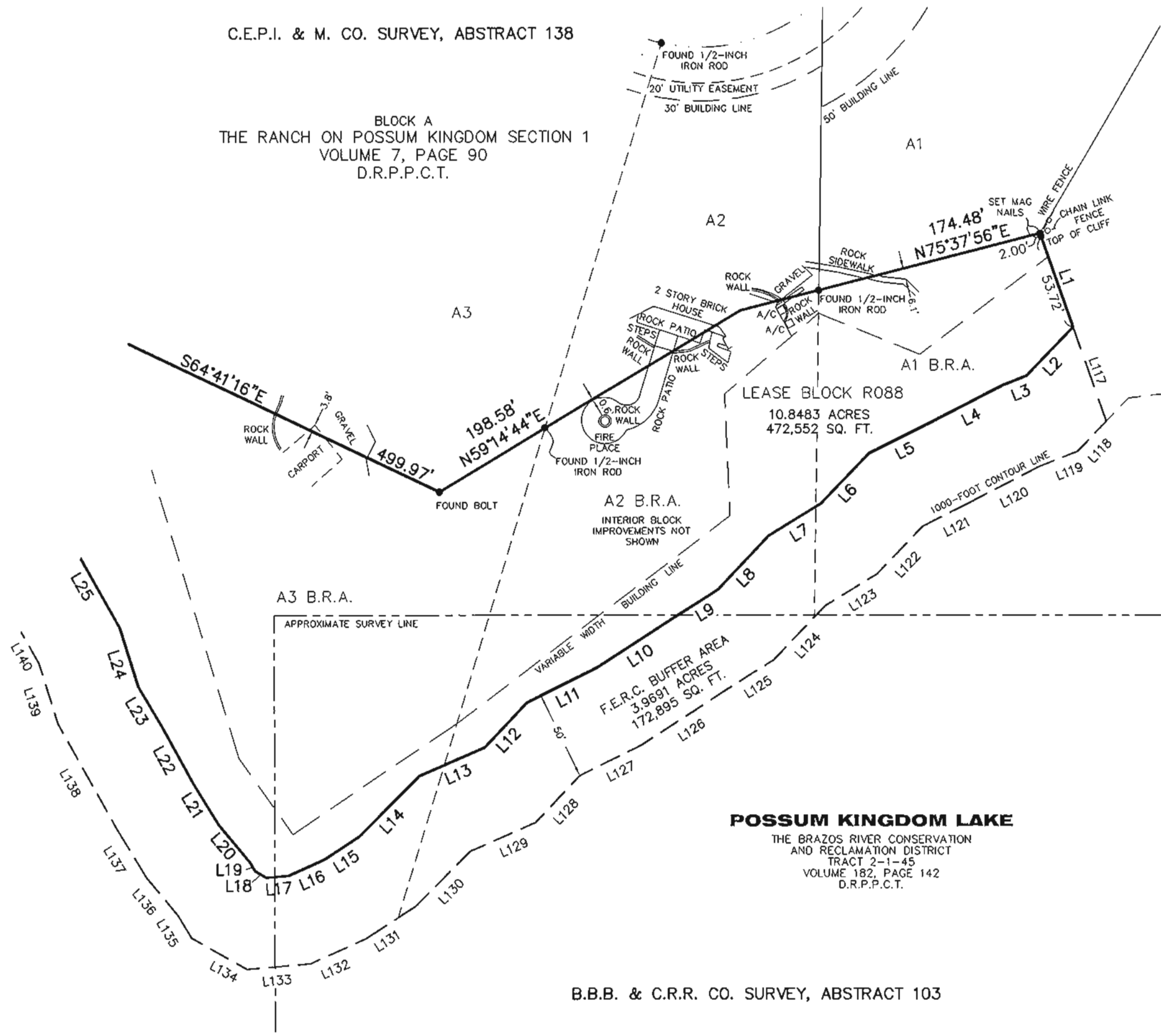
AECOM	AECOM USA GROUP, INC. 1200 SUMMIT AVENUE, SUITE 600 FORT WORTH, TEXAS 76102 WWW.AECOM.COM 817.698.6770	
	Date: 11/25/09	Project No. 60052528.103

NO PART OR PARTS OF THIS DRAWING MAY BE REPRODUCED OR TRANSMITTED IN ANY WAY OR FORM (ELECTRONIC, MECHANICAL, PHOTOCOPYING, OR OTHERWISE) WITHOUT THE EXPRESS WRITTEN PERMISSION OF AECOM.

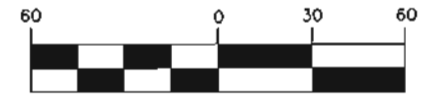
S:\Survey\Projects\60052528\3.0 Ref Docs\Drafting\Blocks\R088\60052528_R088By.dwg 2/17/2010 2:06:22 PM CST

C.E.P.I. & M. CO. SURVEY, ABSTRACT 138

BLOCK A
THE RANCH ON POSSUM KINGDOM SECTION 1
VOLUME 7, PAGE 90
D.R.P.P.C.T.



GRAPHIC SCALE



(IN FEET)
1 inch = 60 ft.

LEGEND

- = LEASE CORNER MARKER "AS NOTED"
- = CLEAN OUT

STANDARD LAND SURVEY OF

14.8174 ACRES

LOTS A1 B.R.A. - A7 B.R.A., BLOCK A
 LOTS A9 B.R.A. & A10 B.R.A., BLOCK A
 LOTS B3 B.R.A. - B8 B.R.A., BLOCK B
 LOTS C2 B.R.A. - C4 B.R.A., BLOCK C
 COMMON ACCESS AREA LOTS 1 & 2
 THE RANCH ON POSSUM KINGDOM LAKE
 C.E.P.I. & M. CO. SURVEY, ABSTRACT 138
 B.B.B. & C.R.R. CO. SURVEY, ABSTRACT 103
 PALO PINTO COUNTY, TEXAS

POSSUM KINGDOM LAKE

THE BRAZOS RIVER CONSERVATION
 AND RECLAMATION DISTRICT
 TRACT 2-1-45
 VOLUME 182, PAGE 142
 D.R.P.P.C.T.

B.B.B. & C.R.R. CO. SURVEY, ABSTRACT 103

AECOM

AECOM USA GROUP, INC.
 1200 SUMMIT AVENUE, SUITE 600
 FORT WORTH, TEXAS 76102
 WWW.AECOM.COM
 817.698.6770

NO PART OF THIS DRAWING MAY BE REPRODUCED OR TRANSMITTED IN ANY WAY OR FORM (ELECTRONIC, MECHANICAL, PHOTOCOPYING, OR OTHERWISE) WITHOUT THE EXPRESS WRITTEN PERMISSION OF AECOM.

S:\Survey\Projects\60052528\3.0 Ref Docs\Drafting\Blocks\R0888y.dwg 2/17/2010 2:06:22 PM CST