

VICINITY MAP
NOT TO SCALE

CURVE TABLE					
CURVE	LENGTH	DELTA	RADIUS	CHORD BEARING	CHORD
C1	74.48	170°42'13"	25.00	S86°13'49"E	49.84'

- LEGEND
- = LEASE CORNER MARKER
"AS NOTED"
 - OH = OVERHEAD LINES
 - ⊕ = POWER POLE

ACREAGE TABLE	
LEASE BLOCK:	2.0593 ACRES
F.E.R.C. BUFFER AREA:	0.6875 OF ONE ACRE
SURVEY BLOCK:	2.7468 ACRES TOTAL

NOTES:

- BEARINGS AND COORDINATES SHOWN HEREON ARE BASED ON THE NORTH AMERICAN DATUM OF 1983, TEXAS COORDINATE SYSTEM, NORTH CENTRAL ZONE (4202).
- 1,000-FOOT CONTOUR ELEVATION OF POSSUM KINGDOM LAKE IS DETERMINED BASED ON MEASUREMENTS FROM THE TOP OF THE EXISTING SPILLWAY CREST GATES AT THE MORRIS SHEPPARD DAM BEING AT ELEVATION 1,000- FEET ABOVE MEAN SEA LEVEL AS NOTED IN FEDERAL POWER COMMISSION REPORT PROJECT NO. 1490 - TEXAS ON JUNE 2, 1938.
- SET = 5/8" IRON ROD W/CAP STAMPED "AECOM" SET; D.R.Y.C.T.= DEED RECORDS, YOUNG COUNTY, TEXAS; P.R.Y.C.T.= PLAT RECORDS, YOUNG COUNTY, TEXAS; F.E.R.C.= FEDERAL ENERGY REGULATORY COMMISSION; J.R.Y.C.T.= JUDGEMENT RECORDS, YOUNG COUNTY, TEXAS.
- METES AND BOUNDS DESCRIPTIONS TO ACCOMPANY THIS SURVEY.
- LOCATION OF ROAD PROVIDED BY LINK FIELD SERVICES, DATED OCTOBER 30, 2009, AS SHOWN SHADED HEREON.

SURVEYORS CERTIFICATE

TO: BRAZOS RIVER AUTHORITY, PATTERSON PK LAND PARTNERSHIP, LTD., AND HERITAGE TITLE COMPANY OF AUSTIN, INC.

I, MUNIR ODHWANI, A REGISTERED PROFESSIONAL LAND SURVEYOR IN THE STATE OF TEXAS, REGISTRATION NUMBER 5996, HEREBY STATE THAT A SURVEY OF THE REAL PROPERTY DESCRIBED IN SEPARATE LEGAL DESCRIPTION AS NOTED HEREON, WAS ACTUALLY MADE UPON THE GROUND UNDER MY DIRECTION AND SUPERVISION, AND THAT TO THE BEST OF MY PROFESSIONAL KNOWLEDGE AND BELIEF, THE INFORMATION SHOWN HEREON IS CORRECT AS DETERMINED BY SAID SURVEY.

THIS SURVEY SUBSTANTIALLY COMPLIES WITH THE CURRENT TEXAS SOCIETY OF PROFESSIONAL SURVEYORS STANDARDS AND SPECIFICATIONS FOR A CATEGORY 1B, CONDITION II SURVEY.



MUNIR ODHWANI
REGISTERED PROFESSIONAL LAND SURVEYOR
TEXAS REGISTRATION NO. 5996

DATE: FEBRUARY 19, 2010



LINE TABLE		
LINE	BEARING	DISTANCE
L1	S54°28'37"W	2.86'
L2	S70°43'26"W	3.92'
L3	N81°55'29"W	14.32'
L4	S77°11'15"W	19.71'
L5	S88°10'48"W	34.11'
L6	S53°56'15"W	39.32'
L7	S11°56'01"W	45.54'
L8	S00°52'42"E	28.83'
L9	N08°25'05"E	36.53'
L10	N76°45'28"E	31.48'
L11	S39°16'49"E	5.16'
L12	S75°17'12"E	25.78'
L13	N78°26'44"E	32.89'
L14	N65°29'06"E	54.07'
L15	S42°44'54"E	8.65'
L16	S33°46'46"E	25.69'
L17	S46°25'37"E	22.63'
L18	S46°13'07"E	20.26'
L19	S25°28'09"W	3.40'
L20	S58°18'20"W	35.83'
L21	S47°01'50"W	14.93'
L22	S65°49'45"W	36.39'
L23	S53°43'39"W	50.54'
L24	S47°36'38"W	56.40'
L25	S48°19'10"W	41.93'
L26	S47°21'30"W	37.77'
L27	S54°40'34"W	15.43'
L28	N83°33'11"W	4.70'
L29	N49°57'40"W	44.86'
L30	N68°25'26"W	16.11'
L31	N39°57'36"W	18.18'
L32	N58°13'17"W	20.03'
L33	N48°35'40"W	25.55'
L34	N52°35'15"W	32.01'
L35	N56°02'52"W	19.68'
L36	N50°15'03"W	38.95'
L37	N57°11'11"W	27.29'
L38	N51°39'01"W	29.91'
L39	N48°53'53"W	29.12'
L40	N53°13'54"W	40.86'
L41	S66°29'44"E	30.17'
L42	S83°38'03"W	1.78'
L43	S54°28'37"W	20.40'
L44	S70°43'26"W	13.57'
L45	N81°55'29"W	15.80'
L46	S77°11'15"W	17.51'
L47	S88°10'48"W	28.81'
L48	S53°56'15"W	22.02'
L49	S11°56'01"W	33.13'
L50	S00°52'42"E	26.03'

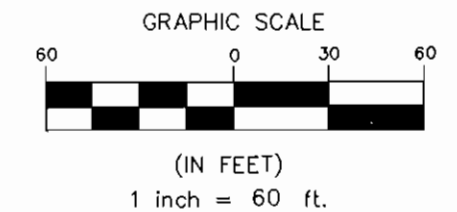
LINE TABLE		
LINE	BEARING	DISTANCE
L51	N08°25'05"E	53.50'
L52	N76°45'28"E	64.06'
L53	S39°16'49"E	12.65'
L54	S75°17'12"E	11.82'
L55	N78°26'44"E	24.22'
L56	N65°29'06"E	48.41'
L57	N48°49'46"E	15.76'
L58	S60°56'57"E	13.13'
L59	S42°44'54"E	22.33'
L60	S33°46'46"E	24.88'
L61	S46°25'37"E	19.91'
L62	S46°13'07"E	31.68'
L63	S23°26'28"E	8.41'
L64	S25°28'09"W	25.40'
L65	S58°18'20"W	40.73'
L66	S47°01'50"W	16.60'
L67	S65°49'45"W	37.88'
L68	S53°43'39"W	46.55'
L69	S47°36'38"W	55.22'
L70	S48°19'10"W	41.88'
L71	S47°21'30"W	39.16'
L72	S54°40'34"W	26.57'
L73	N83°33'11"W	21.78'
L74	N49°57'40"W	48.35'
L75	N68°25'26"W	18.39'
L76	N39°57'36"W	20.51'
L77	N58°13'17"W	18.12'
L78	N48°35'40"W	26.79'
L79	N52°35'15"W	30.38'
L80	N56°02'52"W	20.20'
L81	N50°15'03"W	38.70'
L82	N57°11'11"W	26.98'
L83	N51°39'01"W	31.72'
L84	N48°53'53"W	28.78'
L85	N53°13'54"W	37.76'
L86	N31°50'49"E	25.09'

STANDARD LAND SURVEY
OF
2.7468 ACRES
SITUATED IN TRACT 63--2-8
AREA NL, LOT 25
POSSUM KINGDOM LAKE
JOHN CONNER SURVEY
ABSTRACT 57
YOUNG COUNTY, TEXAS

AECOM

AECOM USA GROUP, INC.
1200 SUMMIT AVENUE, SUITE 600
FORT WORTH, TEXAS 76102
WWW.AECOM.COM
817.698.6770

JOHN CONNER SURVEY
ABSTRACT 57



POINT OF BEGINNING
FOUND 3/4-INCH IRON PIPE
N 7,046,146.33
E 1,973,926.96

THE BRAZOS RIVER CONSERVATION AND RECLAMATION DISTRICT
TRACT 63-2-8
CALLED 1229.68 ACRES
VOLUME 182, PAGE 295
D.R.Y.C.T.

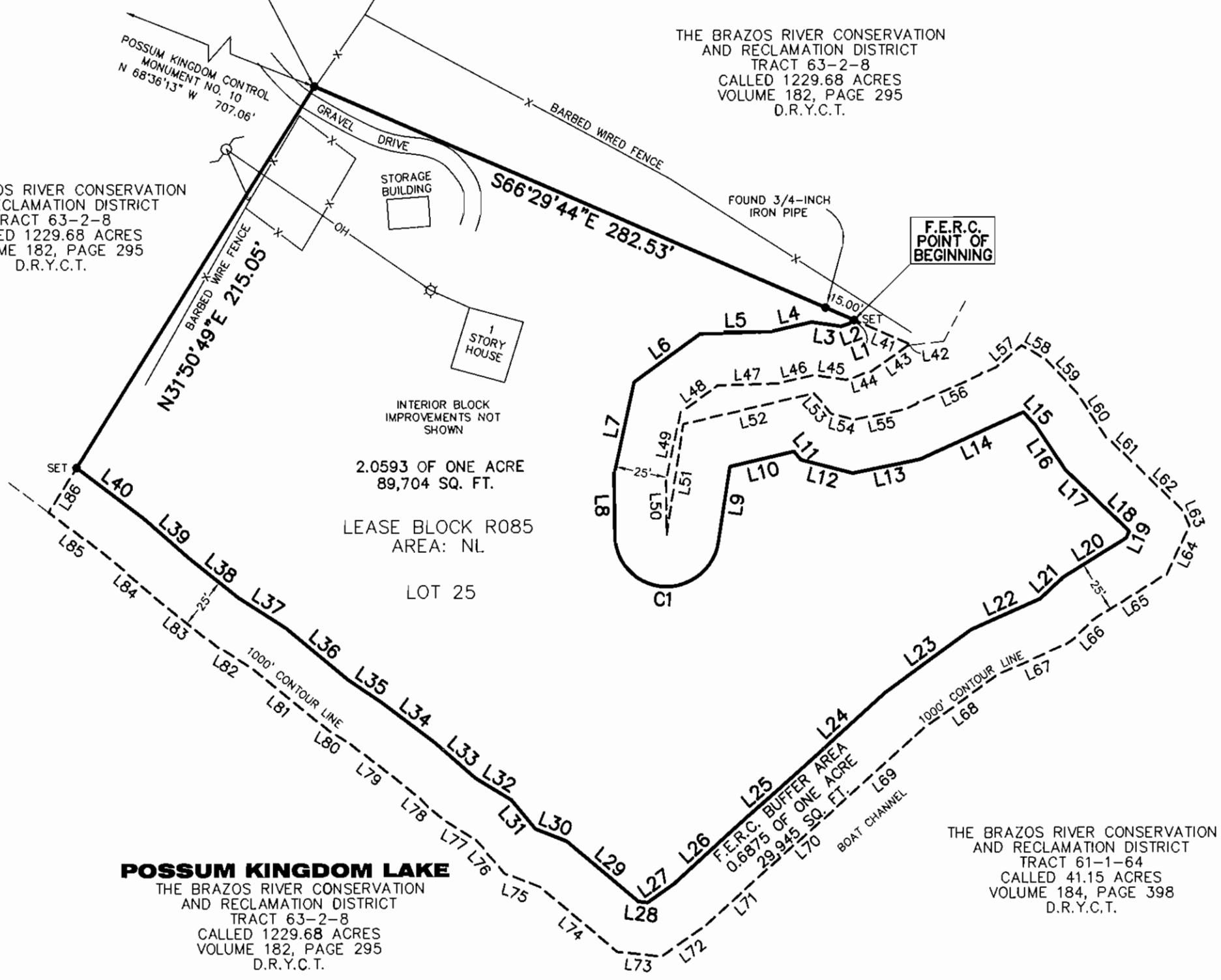
THE BRAZOS RIVER CONSERVATION AND RECLAMATION DISTRICT
TRACT 63-2-8
CALLED 1229.68 ACRES
VOLUME 182, PAGE 295
D.R.Y.C.T.

F.E.R.C. POINT OF BEGINNING

INTERIOR BLOCK IMPROVEMENTS NOT SHOWN
2.0593 OF ONE ACRE
89,704 SQ. FT.
LEASE BLOCK R085
AREA: NL
LOT 25

POSSUM KINGDOM LAKE
THE BRAZOS RIVER CONSERVATION AND RECLAMATION DISTRICT
TRACT 63-2-8
CALLED 1229.68 ACRES
VOLUME 182, PAGE 295
D.R.Y.C.T.

THE BRAZOS RIVER CONSERVATION AND RECLAMATION DISTRICT
TRACT 61-1-64
CALLED 41.15 ACRES
VOLUME 184, PAGE 398
D.R.Y.C.T.

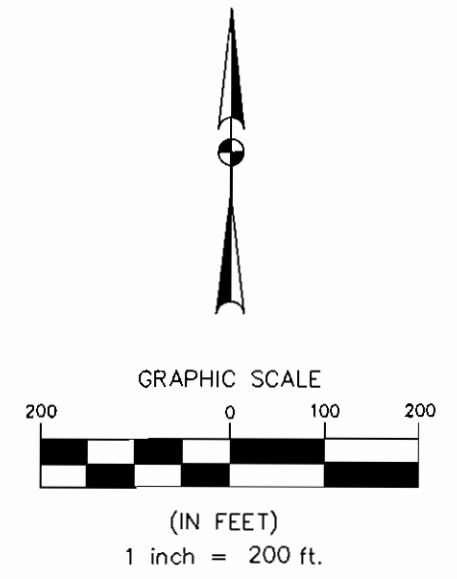
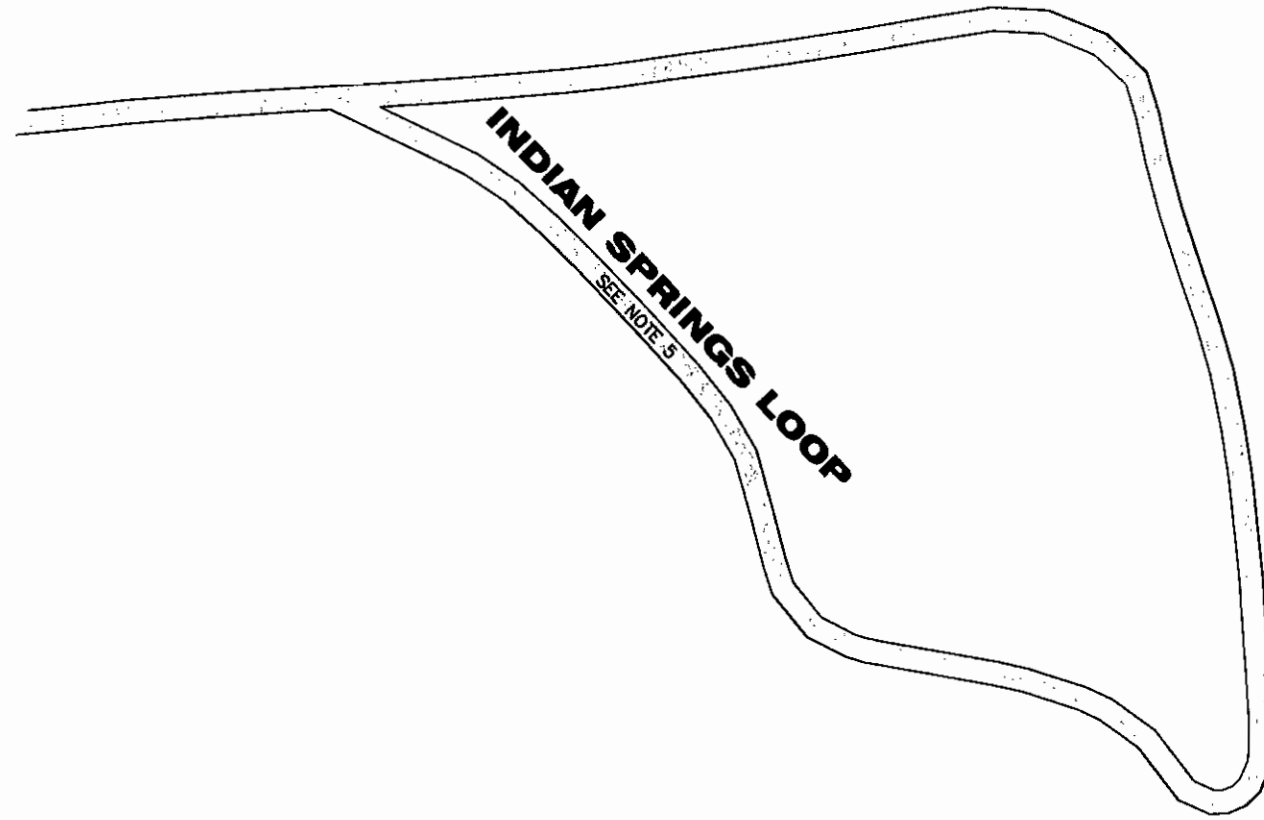


STANDARD LAND SURVEY OF
2.7468 ACRES
SITUATED IN TRACT 63-2-8
AREA NL, LOT 25
POSSUM KINGDOM LAKE
JOHN CONNER SURVEY
ABSTRACT 57
YOUNG COUNTY, TEXAS

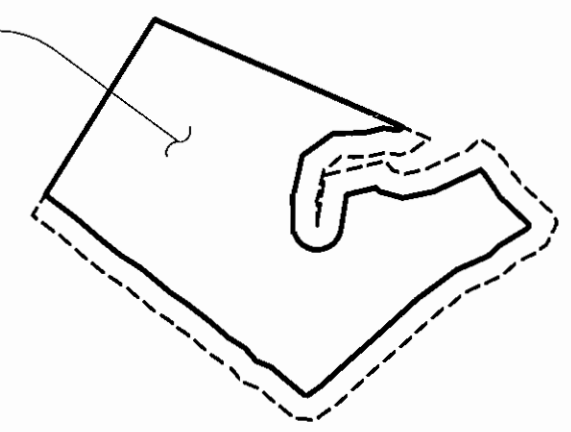
AECOM	AECOM USA GROUP, INC. 1200 SUMMIT AVENUE, SUITE 600 FORT WORTH, TEXAS 76102 WWW.AECOM.COM 817.698.6770	
	Date: 12/30/09	Project No. 60052528.103

NO PART OR PARTS OF THIS DRAWING MAY BE REPRODUCED OR TRANSMITTED IN ANY WAY OR FORM (ELECTRONIC, MECHANICAL, PHOTOCOPYING, OR OTHERWISE) WITHOUT THE EXPRESS WRITTEN PERMISSION OF AECOM.

J:\60052528 Possum Kingdom Lake\102.01 Assimilation of Data\Group 1\R085.dwg DRAWINGS\60052528 R085B.dwg 12/30/2009 10:11:58 AM CST



LEASE BLOCK R085
AREA: NL
LOT 25



STANDARD LAND SURVEY
OF
2.7468 ACRES
SITUATED IN TRACT 63-2-8
AREA NL, LOT 25
POSSUM KINGDOM LAKE
JOHN CONNER SURVEY
ABSTRACT 57
YOUNG COUNTY, TEXAS

AECOM	AECOM USA GROUP, INC. 1200 SUMMIT AVENUE, SUITE 600 FORT WORTH, TEXAS 76102 WWW.AECOM.COM 817.698.6770	
	Date: 12/30/09	Project No. 60052528.103