

VICINITY MAP  
NOT TO SCALE

CURVE TABLE					
CURVE	LENGTH	DELTA	RADIUS	CHORD BEARING	CHORD
C1	33.57'	76°55'44"	25.00'	N21°30'31"W	31.10'
C2	31.92'	73°09'58"	25.00'	S83°26'38"W	29.80'

- LEGEND
- = LEASE CORNER MARKER  
"AS NOTED"
  - OH = OVERHEAD LINES
  - ⊕ = POWER POLE

ACREAGE TABLE	
LEASE BLOCK:	4.3084 ACRES
F.E.R.C. BUFFER AREA:	0.6914 OF ONE ACRE
SURVEY BLOCK:	4.9998 ACRES TOTAL

- NOTES:
- 1) BEARINGS AND COORDINATES SHOWN HEREON ARE BASED ON THE NORTH AMERICAN DATUM OF 1983, TEXAS COORDINATE SYSTEM, NORTH CENTRAL ZONE (4202).
  - 2) 1,000-FOOT CONTOUR ELEVATION OF POSSUM KINGDOM LAKE IS DETERMINED BASED ON MEASUREMENTS FROM THE TOP OF THE EXISTING SPILLWAY CREST GATES AT THE MORRIS SHEPPARD DAM BEING AT ELEVATION 1,000-FEET ABOVE MEAN SEA LEVEL AS NOTED IN FEDERAL POWER COMMISSION REPORT PROJECT NO. 1490 - TEXAS ON JUNE 2, 1938.
  - 3) SET = 5/8" IRON ROD W/CAP STAMPED "AECOM" SET; D.R.Y.C.T.= DEED RECORDS, YOUNG COUNTY, TEXAS; P.R.Y.C.T.= PLAT RECORDS, YOUNG COUNTY, TEXAS; F.E.R.C.= FEDERAL ENERGY REGULATORY COMMISSION; J.R.Y.C.T.= JUDGMENT RECORDS, YOUNG COUNTY, TEXAS.
  - 4) METES AND BOUNDS DESCRIPTIONS TO ACCOMPANY THIS SURVEY.

SURVEYORS CERTIFICATE

TO: BRAZOS RIVER AUTHORITY, PATTERSON PK LAND PARTNERSHIP, LTD., AND HERITAGE TITLE COMPANY OF AUSTIN, INC.

I, MUNIR ODHWANI, A REGISTERED PROFESSIONAL LAND SURVEYOR IN THE STATE OF TEXAS, REGISTRATION NUMBER 5996, HEREBY STATE THAT A SURVEY OF THE REAL PROPERTY DESCRIBED IN SEPARATE LEGAL DESCRIPTION AS NOTED HEREON, WAS ACTUALLY MADE UPON THE GROUND UNDER MY DIRECTION AND SUPERVISION, AND THAT TO THE BEST OF MY PROFESSIONAL KNOWLEDGE AND BELIEF, THE INFORMATION SHOWN HEREON IS CORRECT AS DETERMINED BY SAID SURVEY.

THIS SURVEY SUBSTANTIALLY COMPLIES WITH THE CURRENT TEXAS SOCIETY OF PROFESSIONAL SURVEYORS STANDARDS AND SPECIFICATIONS FOR A CATEGORY 1B, CONDITION II SURVEY.

*Munir Odhwani*  
MUNIR ODHWANI  
REGISTERED PROFESSIONAL LAND SURVEYOR  
TEXAS REGISTRATION NO. 5996



DATE: FEBRUARY 12, 2010

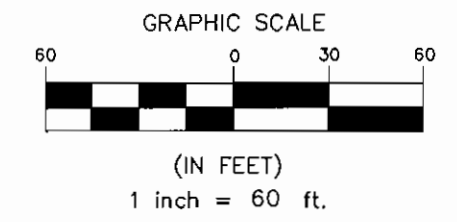
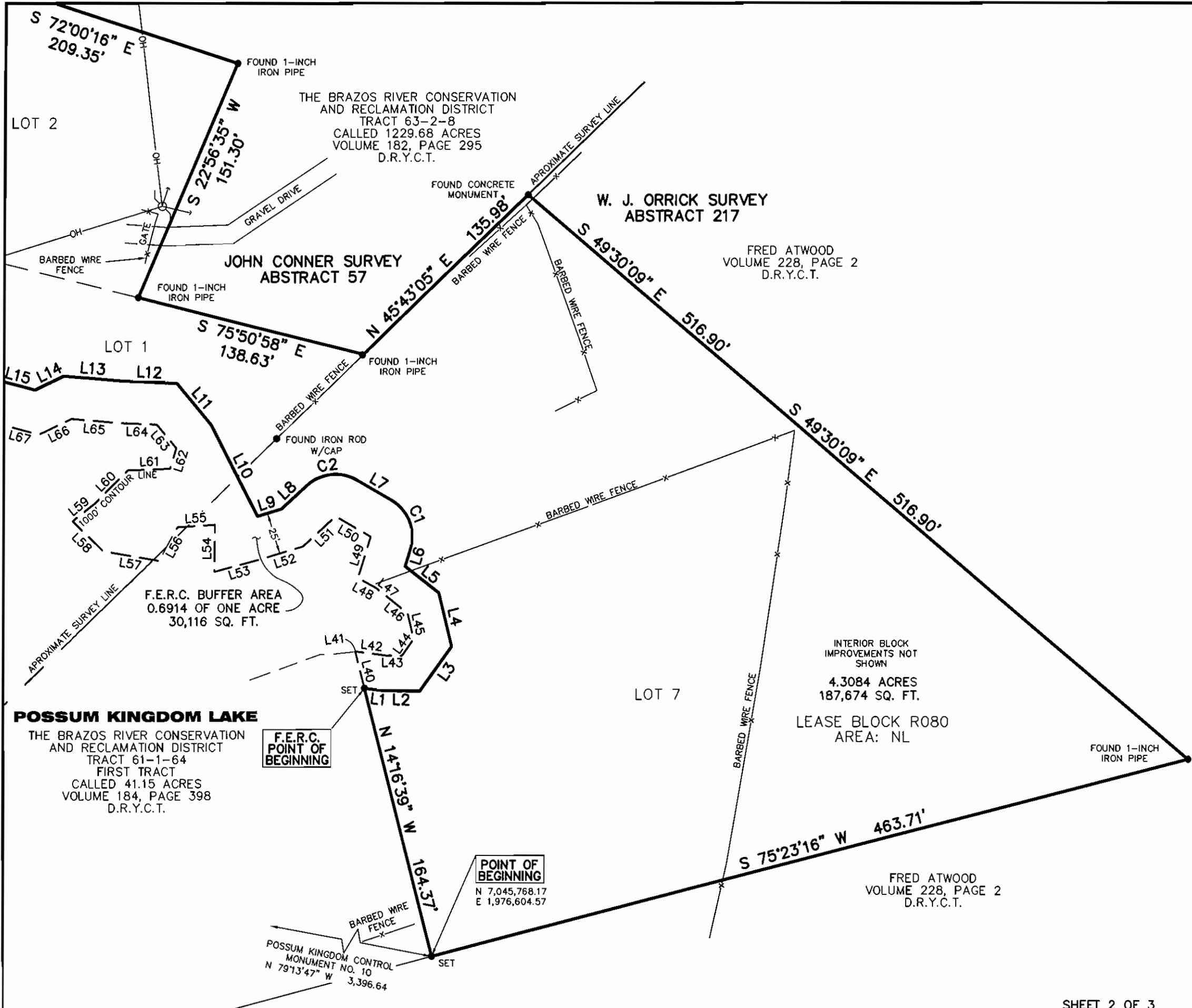
LINE TABLE		
LINE	BEARING	DISTANCE
L1	S82°49'34"E	11.54'
L2	S88°51'47"E	21.65'
L3	N35°30'30"E	32.68'
L4	N13°33'44"W	32.84'
L5	N51°51'04"W	25.59'
L6	N16°57'21"E	10.79'
L7	N59°58'23"W	24.29'
L8	S46°51'39"W	20.24'
L9	S73°11'43"W	14.77'
L10	N27°17'43"W	61.12'
L11	N39°55'16"W	32.13'
L12	N87°20'58"W	33.56'
L13	N85°11'50"W	34.01'
L14	S64°15'18"W	18.90'
L15	N75°06'11"W	18.16'
L16	S78°32'22"W	40.98'
L17	S59°12'11"W	30.79'
L18	S80°41'29"W	23.15'
L19	S75°24'52"W	32.69'
L20	S59°50'14"W	25.31'
L21	S78°05'21"W	41.05'
L22	S47°12'28"W	13.86'
L23	N81°07'25"W	17.69'
L24	S89°15'25"W	27.74'
L25	N56°34'21"W	8.67'
L26	N01°25'40"W	9.39'
L27	N19°14'32"E	21.21'
L28	N33°54'02"E	23.73'
L29	N31°31'53"E	10.56'
L30	N79°11'19"E	18.15'
L31	N64°26'54"E	37.80'
L32	N22°58'23"E	39.33'
L33	N23°07'35"E	30.17'
L34	N28°34'24"E	29.08'
L35	N37°45'21"E	36.62'
L36	N13°08'49"E	38.31'
L37	N23°42'28"E	20.08'
L38	N30°59'48"E	33.17'
L39	N15°47'22"E	34.40'
L40	N14°16'39"W	22.49'
L41	N83°27'20"E	0.24'
L42	S82°49'34"E	18.43'
L43	S88°51'47"E	9.48'
L44	N35°30'30"E	12.03'
L45	N13°33'44"W	15.98'
L46	N51°51'04"W	12.26'
L47	N51°47'12"W	11.97'
L48	N61°05'19"W	12.16'
L49	N16°57'21"E	25.69'
L50	N59°58'23"W	24.29'

LINE TABLE		
LINE	BEARING	DISTANCE
L51	S46°51'39"W	26.09'
L52	S73°11'43"W	26.78'
L53	S75°14'35"W	28.03'
L54	N00°28'58"E	27.84'
L55	S86°21'57"W	22.60'
L56	S28°28'20"W	22.71'
L57	N80°09'16"W	33.93'
L58	N45°44'25"W	25.34'
L59	N51°31'40"E	16.88'
L60	N44°46'46"E	27.91'
L61	N87°55'46"E	24.97'
L62	N17°03'00"E	12.65'
L63	N39°55'16"W	18.38'
L64	N87°20'58"W	23.05'
L65	N85°11'50"W	27.66'
L66	S64°15'18"W	21.34'
L67	N75°06'11"W	21.56'
L68	S78°32'22"W	30.87'
L69	S59°12'11"W	31.27'
L70	S80°41'29"W	26.75'
L71	S75°24'52"W	28.12'
L72	S59°50'14"W	25.90'
L73	S78°05'21"W	38.16'
L74	S47°12'28"W	19.06'
L75	N81°07'25"W	27.69'
L76	S89°15'25"W	33.32'
L77	N56°34'21"W	29.41'
L78	N01°25'40"W	27.00'
L79	N19°14'32"E	28.98'
L80	N33°54'02"E	26.43'
L81	N31°31'53"E	21.08'
L82	N79°11'19"E	25.96'
L83	N64°26'54"E	25.10'
L84	N22°58'23"E	29.90'
L85	N23°07'35"E	31.39'
L86	N28°34'24"E	32.27'
L87	N37°45'21"E	33.18'
L88	N13°08'49"E	35.17'
L89	N23°42'28"E	23.98'
L90	N30°59'48"E	31.42'
L91	N15°47'22"E	32.03'
L92	S72°00'16"E	25.02'

STANDARD LAND SURVEY  
OF  
**4.9998 ACRES**  
SITUATED IN TRACTS 63-2-8 & 61-1-64  
AREA NL, LOTS 1, 2, & 7  
POSSUM KINGDOM LAKE  
JOHN CONNER SURVEY, ABSTRACT 57 &  
W. J. ORRICK SURVEY, ABSTRACT 217  
YOUNG COUNTY, TEXAS

<b>AECOM</b>	AECOM USA GROUP, INC. 1200 SUMMIT AVENUE, SUITE 600 FORT WORTH, TEXAS 76102 WWW.AECOM.COM 817.698.6770	
	SHEET 1 OF 3	

Date: 01/07/10 Project No. 60052528.103 60052528 R080By.dwg



LOT 2

LOT 1

LOT 7

THE BRAZOS RIVER CONSERVATION AND RECLAMATION DISTRICT TRACT 63-2-8 CALLED 1229.68 ACRES VOLUME 182, PAGE 295 D.R.Y.C.T.

JOHN CONNER SURVEY ABSTRACT 57

W. J. ORRICK SURVEY ABSTRACT 217

FRED ATWOOD VOLUME 228, PAGE 2 D.R.Y.C.T.

F.E.R.C. BUFFER AREA 0.6914 OF ONE ACRE 30,116 SQ. FT.

INTERIOR BLOCK IMPROVEMENTS NOT SHOWN 4.3084 ACRES 187,674 SQ. FT. LEASE BLOCK R080 AREA: NL

**POSSUM KINGDOM LAKE**  
THE BRAZOS RIVER CONSERVATION AND RECLAMATION DISTRICT TRACT 61-1-64 FIRST TRACT CALLED 41.15 ACRES VOLUME 184, PAGE 398 D.R.Y.C.T.

F.E.R.C. POINT OF BEGINNING

POINT OF BEGINNING  
N 7,045,768.17  
E 1,976,604.57

POSSUM KINGDOM CONTROL MONUMENT NO. 10  
N 79°13'47" W 3,396.64

STANDARD LAND SURVEY OF 4.9998 ACRES

SITUATED IN TRACTS 63-2-8 & 61-1-64 AREA NL, LOTS 1, 2, & 7 POSSUM KINGDOM LAKE JOHN CONNER SURVEY, ABSTRACT 57 & W. J. ORRICK SURVEY, ABSTRACT 217 YOUNG COUNTY, TEXAS

**AECOM**

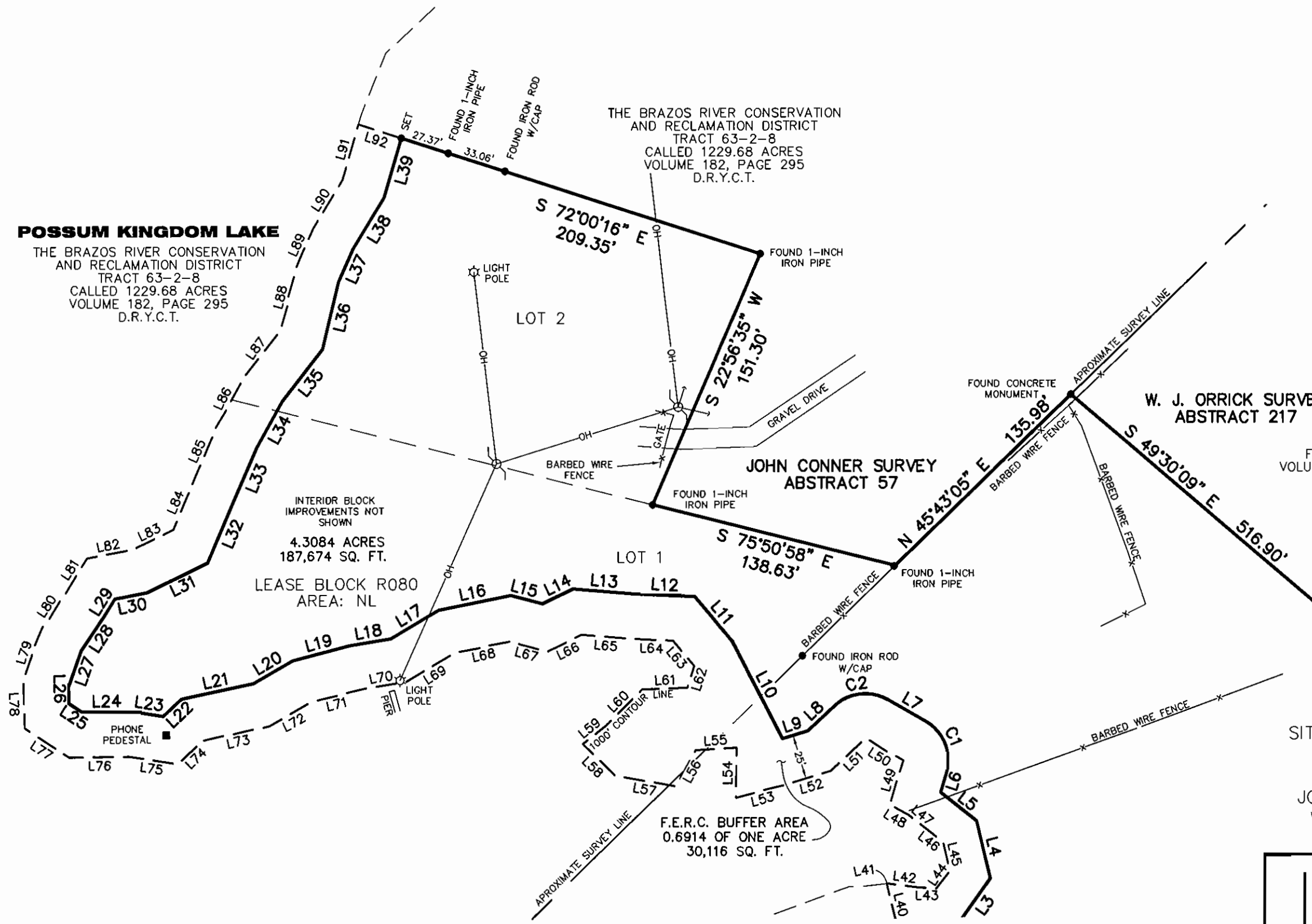
AECOM USA GROUP, INC.  
1200 SUMMIT AVENUE, SUITE 600  
FORT WORTH, TEXAS 76102  
WWW.AECOM.COM  
817.698.6770

NO PART OR PARTS OF THIS DRAWING MAY BE REPRODUCED OR TRANSMITTED IN ANY WAY OR FORM (ELECTRONIC, MECHANICAL, PHOTOCOPYING, OR OTHERWISE) WITHOUT THE EXPRESS WRITTEN PERMISSION OF AECOM.

J:\60052528-Possum Kingdom Lake\102.01 Assimilation of Data\Group 1\R080\_JDF\_DRAWINGS\60052528 R080By.dwg 1/7/2010 3:45:53 PM CST



(IN FEET)  
1 inch = 60 ft.



**POSSUM KINGDOM LAKE**  
THE BRAZOS RIVER CONSERVATION AND RECLAMATION DISTRICT  
TRACT 63-2-8  
CALLED 1229.68 ACRES  
VOLUME 182, PAGE 295  
D.R.Y.C.T.

THE BRAZOS RIVER CONSERVATION AND RECLAMATION DISTRICT  
TRACT 63-2-8  
CALLED 1229.68 ACRES  
VOLUME 182, PAGE 295  
D.R.Y.C.T.

INTERIOR BLOCK IMPROVEMENTS NOT SHOWN  
4.3084 ACRES  
187,674 SQ. FT.  
LEASE BLOCK R080  
AREA: NL

F.E.R.C. BUFFER AREA  
0.6914 OF ONE ACRE  
30,116 SQ. FT.

W. J. ORRICK SURVEY  
ABSTRACT 217  
  
FRED ATWOOD  
VOLUME 228, PAGE 2  
D.R.Y.C.T.

STANDARD LAND SURVEY  
OF  
**4.9998 ACRES**  
SITUATED IN TRACTS 63-2-8 & 61-1-64  
AREA NL, LOTS 1, 2, & 7  
POSSUM KINGDOM LAKE  
JOHN CONNER SURVEY, ABSTRACT 57 &  
W. J. ORRICK SURVEY, ABSTRACT 217  
YOUNG COUNTY, TEXAS

**AECOM**

AECOM USA GROUP, INC.  
1200 SUMMIT AVENUE, SUITE 600  
FORT WORTH, TEXAS 76102  
WWW.AECOM.COM  
817.698.6770

NO PART OR PARTS OF THIS DRAWING MAY BE REPRODUCED OR TRANSMITTED IN ANY WAY OR FORM (ELECTRONIC, MECHANICAL, PHOTOCOPIING, OR OTHERWISE) WITHOUT THE EXPRESS WRITTEN PERMISSION OF AECOM.

J:\60052528 - Posssum Kingdom Lake\102.01 Assimilation of Data\Group 1\RO80 - JD\DRAWINGS\60052528 R080By.dwg 1/7/2010 3:45:53 PM CST