

VICINITY MAP
NOT TO SCALE

- LEGEND
- = LEASE CORNER MARKER
"AS NOTED"
 - OH = OVERHEAD LINES
 - ⊕ = POWER POLE

ACREAGE TABLE	
LEASE BLOCK:	2.4045 ACRES
F.E.R.C. BUFFER AREA:	0.3663 OF ONE ACRE
SURVEY BLOCK:	2.7708 ACRES TOTAL

NOTES:

- 1) BEARINGS AND COORDINATES SHOWN HEREON ARE BASED ON THE NORTH AMERICAN DATUM OF 1983, TEXAS COORDINATE SYSTEM, NORTH CENTRAL ZONE (4202).
- 2) 1,000-FOOT CONTOUR ELEVATION OF POSSUM KINGDOM LAKE IS DETERMINED BASED ON MEASUREMENTS FROM THE TOP OF THE EXISTING SPILLWAY CREST GATES AT THE MORRIS SHEPPARD DAM BEING AT ELEVATION 1,000-FEET ABOVE MEAN SEA LEVEL AS NOTED IN FEDERAL POWER COMMISSION REPORT PROJECT NO. 1490 - TEXAS ON JUNE 2, 1938.
- 3) SET = 5/8" IRON ROD W/CAP STAMPED "AECOM" SET; D.R.Y.C.T.= DEED RECORDS, YOUNG COUNTY, TEXAS; P.R.Y.C.T.= PLAT RECORDS, YOUNG COUNTY, TEXAS; F.E.R.C.= FEDERAL ENERGY REGULATORY COMMISSION; J.R.Y.C.T.= JUDGMENT RECORDS, YOUNG COUNTY, TEXAS.
- 4) METES AND BOUNDS DESCRIPTIONS TO ACCOMPANY THIS SURVEY.

SURVEYORS CERTIFICATE

TO: BRAZOS RIVER AUTHORITY, PATTERSON PK LAND PARTNERSHIP, LTD., AND HERITAGE TITLE COMPANY OF AUSTIN, INC.

I, MUNIR ODHWANI, A REGISTERED PROFESSIONAL LAND SURVEYOR IN THE STATE OF TEXAS, REGISTRATION NUMBER 5996, HEREBY STATE THAT A SURVEY OF THE REAL PROPERTY DESCRIBED IN SEPARATE LEGAL DESCRIPTION AS NOTED HEREON, WAS ACTUALLY MADE UPON THE GROUND UNDER MY DIRECTION AND SUPERVISION, AND THAT TO THE BEST OF MY PROFESSIONAL KNOWLEDGE AND BELIEF, THE INFORMATION SHOWN HEREON IS CORRECT AS DETERMINED BY SAID SURVEY.

THIS SURVEY SUBSTANTIALLY COMPLIES WITH THE CURRENT TEXAS SOCIETY OF PROFESSIONAL SURVEYORS STANDARDS AND SPECIFICATIONS FOR A CATEGORY 1B, CONDITION II SURVEY.


 MUNIR ODHWANI
 REGISTERED PROFESSIONAL LAND SURVEYOR
 TEXAS REGISTRATION NO. 5996


DATE: FEBRUARY 12, 2010



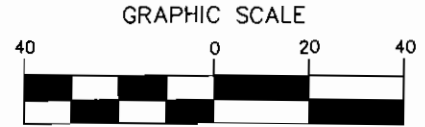
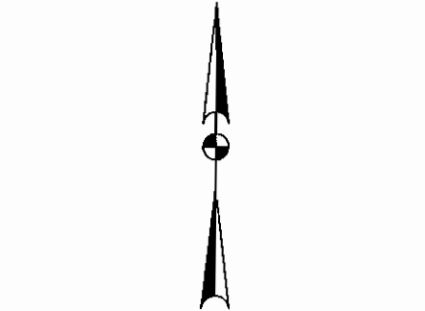
LINE TABLE		
LINE	BEARING	DISTANCE
L1	S73°24'54"W	27.03'
L2	N89°33'04"W	31.39'
L3	S74°29'59"W	27.92'
L4	S60°10'55"W	29.75'
L5	S48°31'40"W	16.35'
L6	N86°01'11"W	11.28'
L7	N60°59'07"W	8.57'
L8	N28°23'20"W	21.48'
L9	N49°25'53"W	19.96'
L10	N48°19'43"W	22.15'
L11	N47°41'27"W	34.44'
L12	S63°06'42"W	53.97'
L13	S35°48'18"W	32.54'
L14	S34°18'16"W	29.52'
L15	S49°50'31"W	23.77'
L16	N87°32'25"W	25.93'
L17	S79°18'59"W	36.42'
L18	S88°45'19"W	29.02'
L19	S87°43'58"W	36.63'
L20	S73°52'40"W	34.32'
L21	S89°53'40"W	30.39'
L22	S85°36'15"W	39.31'
L23	S71°15'31"W	17.19'
L24	S05°04'33"E	25.51'

LINE TABLE		
LINE	BEARING	DISTANCE
L25	S73°24'54"W	25.69'
L26	N89°33'04"W	31.63'
L27	S74°29'59"W	21.27'
L28	S60°10'55"W	24.06'
L29	S48°31'40"W	24.26'
L30	N86°01'11"W	27.30'
L31	N60°59'07"W	21.43'
L32	N28°23'20"W	24.15'
L33	N49°25'53"W	15.56'
L34	N48°19'43"W	22.53'
L35	N47°41'27"W	17.33'
L36	S63°06'42"W	30.65'
L37	S35°48'18"W	26.14'
L38	S34°18'16"W	32.60'
L39	S49°50'31"W	36.93'
L40	N87°32'25"W	32.80'
L41	S79°18'59"W	35.60'
L42	S88°45'19"W	30.86'
L43	S87°43'58"W	33.37'
L44	S73°52'40"W	34.80'
L45	S89°53'40"W	32.98'
L46	S85°36'15"W	35.22'
L47	S71°15'31"W	20.10'
L48	N05°06'38"W	25.72'

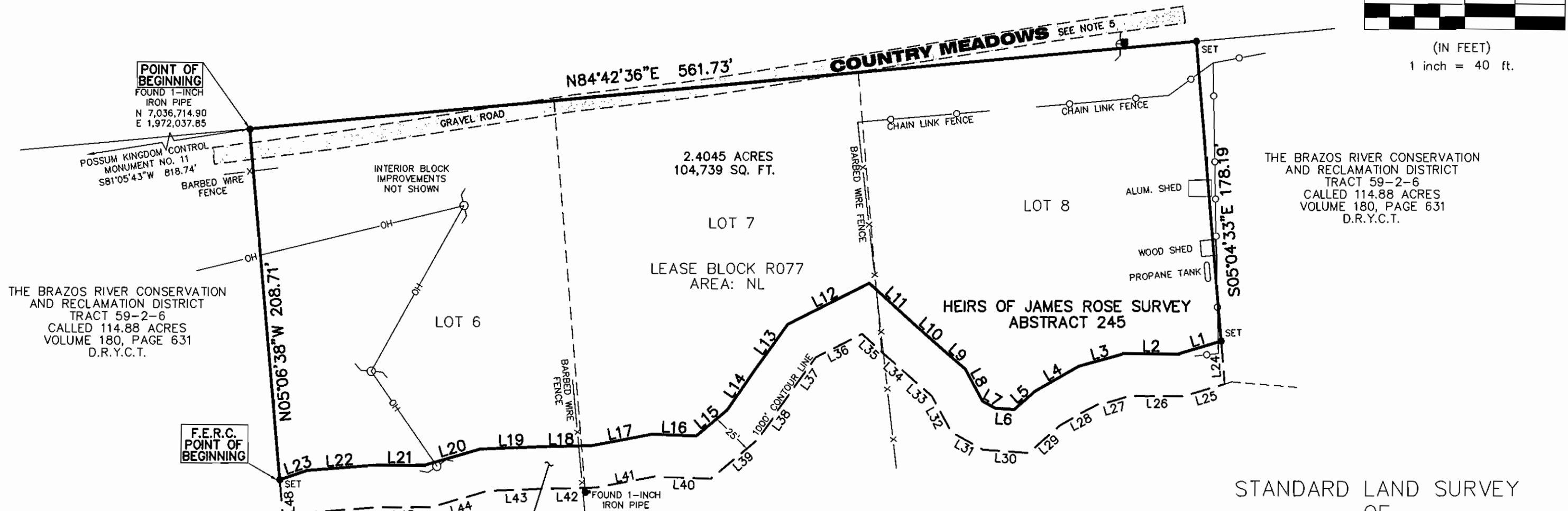
STANDARD LAND SURVEY
 OF
 2.7708 ACRES
 SITUATED IN TRACT 59-2-6
 AREA NL, LOTS 6-8
 POSSUM KINGDOM LAKE
 HEIRS OF JAMES ROSE SURVEY
 ABSTRACT 245
 YOUNG COUNTY, TEXAS

	AECOM USA GROUP, INC. 1200 SUMMIT AVENUE, SUITE 600 FORT WORTH, TEXAS 76102 WWW.AECOM.COM 817.698.6770	
	Date: 12/30/09	Project No. 60052528.103

THE ROBERT I. HART 1996 TRUST
 VOLUME 982, PAGE 884
 D.R.Y.C.T.



(IN FEET)
 1 inch = 40 ft.



THE BRAZOS RIVER CONSERVATION
 AND RECLAMATION DISTRICT
 TRACT 59-2-6
 CALLED 114.88 ACRES
 VOLUME 180, PAGE 631
 D.R.Y.C.T.

THE BRAZOS RIVER CONSERVATION
 AND RECLAMATION DISTRICT
 TRACT 59-2-6
 CALLED 114.88 ACRES
 VOLUME 180, PAGE 631
 D.R.Y.C.T.

POINT OF BEGINNING
 FOUND 1-INCH
 IRON PIPE
 N 7,036,714.90
 E 1,972,037.85

**F.E.R.C.
 POINT OF BEGINNING**

F.E.R.C. BUFFER AREA
 0.3663 OF ONE ACRE
 15,958 SQ. FT.

POSSUM KINGDOM LAKE
 THE BRAZOS RIVER CONSERVATION
 AND RECLAMATION DISTRICT
 TRACT 59-2-6
 CALLED 114.88 ACRES
 VOLUME 180, PAGE 631
 D.R.Y.C.T.

STANDARD LAND SURVEY
 OF
2.7708 ACRES
 SITUATED IN TRACT 59-2-6
 AREA NL, LOTS 6-8
 POSSUM KINGDOM LAKE
 HEIRS OF JAMES ROSE SURVEY
 ABSTRACT 245
 YOUNG COUNTY, TEXAS

AECOM	AECOM USA GROUP, INC. 1200 SUMMIT AVENUE, SUITE 600 FORT WORTH, TEXAS 76102 WWW.AECOM.COM 817.698.6770	
	Date: 12/30/09	Project No. 60052528.103

NO PART OR PARTS OF THIS DRAWING MAY BE REPRODUCED OR RETRANSMITTED IN ANY WAY OR FORM (ELECTRONIC, MECHANICAL, PHOTOCOPYING, OR OTHERWISE) WITHOUT THE EXPRESS WRITTEN PERMISSION OF AECOM.

J:\60052528 Possum Kingdom Lake\102.01 Assimilation of Data\Group 1\1077\60052528 R077By.dwg 12/30/2009 10:12:51 AM CST