

VICINITY MAP  
NOT TO SCALE

ACREAGE TABLE	
LEASE BLOCK:	8.7831 ACRES
F.E.R.C. BUFFER AREA:	1.7655 ACRES
SURVEY BLOCK:	10.5486 ACRES TOTAL

- LEGEND**
- = LEASE CORNER MARKER  
"AS NOTED"
  - OH = OVERHEAD LINES
  - ⊕ = POWER POLE

**NOTES:**

- 1) BEARINGS AND COORDINATES SHOWN HEREON ARE BASED ON THE NORTH AMERICAN DATUM OF 1983, TEXAS COORDINATE SYSTEM, NORTH CENTRAL ZONE (4202).
- 2) 1,000-FOOT CONTOUR ELEVATION OF POSSUM KINGDOM LAKE IS DETERMINED BASED ON MEASUREMENTS FROM THE TOP OF THE EXISTING SPILLWAY CREST GATES AT THE MORRIS SHEPPARD DAM BEING AT ELEVATION 1,000- FEET ABOVE MEAN SEA LEVEL AS NOTED IN FEDERAL POWER COMMISSION REPORT PROJECT NO. 1490 - TEXAS ON JUNE 2, 1938.
- 3) SET = 5/8" IRON ROD W/CAP STAMPED "AECOM" SET; D.R.S.C.T.= DEED RECORDS, STEPHENS COUNTY, TEXAS; P.R.S.C.T.= PLAT RECORDS, STEPHENS COUNTY, TEXAS; F.E.R.C.= FEDERAL ENERGY REGULATORY COMMISSION; J.R.S.C.T.= JUDGEMENT RECORDS, STEPHENS COUNTY, TEXAS.
- 4) METES AND BOUNDS DESCRIPTIONS TO ACCOMPANY THIS SURVEY.
- 5) LOCATION OF ROAD PROVIDED BY LINK FIELD SERVICES, DATED OCTOBER 27, 2009, AS SHOWN SHADED HEREON.

**SURVEYORS CERTIFICATE**

TO: BRAZOS RIVER AUTHORITY, PATTERSON PK LAND PARTNERSHIP, LTD., AND HERITAGE TITLE COMPANY OF AUSTIN, INC.

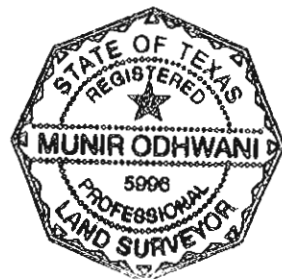
I, MUNIR ODHWANI, A REGISTERED PROFESSIONAL LAND SURVEYOR IN THE STATE OF TEXAS, REGISTRATION NUMBER 5996, HEREBY STATE THAT A SURVEY OF THE REAL PROPERTY DESCRIBED IN SEPARATE LEGAL DESCRIPTION AS NOTED HEREON, WAS ACTUALLY MADE UPON THE GROUND UNDER MY DIRECTION AND SUPERVISION, AND THAT TO THE BEST OF MY PROFESSIONAL KNOWLEDGE AND BELIEF, THE INFORMATION SHOWN HEREON IS CORRECT AS DETERMINED BY SAID SURVEY.

THIS SURVEY SUBSTANTIALLY COMPLIES WITH THE CURRENT TEXAS SOCIETY OF PROFESSIONAL SURVEYORS STANDARDS AND SPECIFICATIONS FOR A CATEGORY 1B, CONDITION II SURVEY.

*Munir Odhwani*

MUNIR ODHWANI  
REGISTERED PROFESSIONAL LAND SURVEYOR  
TEXAS REGISTRATION NO. 5996

DATE: FEBRUARY 12, 2010



CURVE TABLE					
CURVE	LENGTH	DELTA	RADIUS	CHORD BEARING	CHORD
C1	46.27	106°02'34"	25.00	N82°02'11"W	39.94'
C2	41.21	94°26'17"	25.00	S60°53'51"W	36.70'
C3	30.31	69°28'02"	25.00	N74°45'30"W	28.49'
C4	25.03	57°21'38"	25.00	N75°48'31"W	24.00'
C5	37.49	85°55'27"	25.00	N42°07'25"W	34.08'
C6	11.93	11°57'28"	57.15	N07°29'57"W	11.91'
C7	26.74	61°17'06"	25.00	N22°32'24"W	25.48'
C8	58.13	133°13'21"	25.00	N39°38'16"W	45.89'
C9	4.78	36°33'48"	7.49	N70°59'11"W	4.70'
C10	6.70	58°01'40"	6.62	N23°41'26"W	6.42'
C11	15.72	3°23'12"	265.96	N07°00'59"E	15.72'
C12	19.70	35°06'02"	32.15	N08°50'26"W	19.39'

STANDARD LAND SURVEY  
OF  
**10.5486 ACRES**  
SITUATED IN TRACTS 157-3-75  
& 158-3-22  
AREA 6-B & 6-C  
LOTS E-1 THROUGH E-12  
& 1-E, 1-W & 2  
POSSUM KINGDOM LAKE  
J. POITEVENT SURVEY  
ABSTRACT 142  
STEPHENS COUNTY, TEXAS

<b>AECOM</b>	AECOM USA GROUP, INC. 1200 SUMMIT AVENUE, SUITE 600 FORT WORTH, TEXAS 76102 WWW.AECOM.COM 817.698.6770	
	Date: 01/22/10	Project No. 60052528.103

LINE TABLE		
LINE	BEARING	DISTANCE
L1	S14°13'54"W	11.67'
L2	S12°05'15"E	27.38'
L3	S37°57'22"E	5.71'
L4	S37°20'51"W	20.71'
L5	S13°30'11"W	36.74'
L6	S30°51'02"E	19.05'
L7	S09°30'31"W	17.21'
L8	S30°29'42"E	3.58'
L9	S83°53'20"W	41.63'
L10	S87°47'38"W	17.80'
L11	N02°42'41"W	1.98'
L12	N06°37'33"W	37.14'
L13	N33°24'12"W	13.14'
L14	N55°53'19"W	30.22'
L15	N79°39'45"W	35.67'
L16	N81°52'21"W	30.10'
L17	N78°32'51"W	32.08'
L18	N84°24'18"W	25.23'
L19	N29°00'53"W	17.82'
L20	S44°56'31"W	13.11'
L21	N69°15'54"W	20.39'
L22	N66°40'54"W	16.80'
L23	N65°34'53"W	14.27'
L24	N71°52'59"W	9.35'
L25	N65°09'40"W	15.08'
L26	N46°14'14"W	14.77'
L27	N13°49'58"W	51.20'
L28	N57°14'17"W	34.99'
L29	N31°12'34"W	24.84'
L30	N34°05'31"W	49.41'
L31	N34°41'36"W	38.64'
L32	N36°13'44"W	39.30'
L33	N33°44'30"W	31.62'
L34	N40°01'28"W	16.46'
L35	S70°30'28"W	0.49'
L36	N36°47'35"W	3.66'
L37	N36°49'43"W	17.80'
L38	N41°56'39"W	31.85'
L39	N42°21'07"W	20.41'
L40	N54°04'38"W	20.00'
L41	N34°29'31"E	2.74'
L42	N56°44'00"W	39.81'
L43	N63°38'19"W	25.15'
L44	N62°21'40"W	19.81'
L45	N45°10'31"W	18.27'
L46	N40°15'34"W	10.75'
L47	N41°07'10"W	34.78'
L48	N40°12'37"W	12.42'
L49	N44°51'11"W	20.32'
L50	N44°58'54"W	21.64'

LINE TABLE		
LINE	BEARING	DISTANCE
L51	N42°52'03"W	12.06'
L52	N28°01'53"W	19.15'
L53	N65°15'47"W	25.32'
L54	N47°07'42"W	29.71'
L55	N53°31'23"W	36.63'
L56	N34°21'58"E	7.49'
L57	N54°11'29"W	49.32'
L58	S47°03'34"W	1.69'
L59	N40°27'45"W	7.79'
L60	N39°43'46"W	28.43'
L61	N38°27'46"W	26.63'
L62	N61°33'25"W	3.65'
L63	N52°24'41"W	43.38'
L64	N52°08'03"W	51.19'
L65	N84°41'15"W	15.02'
L66	N58°12'09"W	17.91'
L67	N49°29'07"W	19.63'
L68	N36°21'54"W	11.67'
L69	N34°22'22"W	9.62'
L70	N85°05'09"W	1.37'
L71	N53°10'57"W	1.29'
L72	N13°09'33"E	25.10'
L73	N04°30'50"W	26.82'
L74	N35°27'58"W	18.92'
L75	N68°13'47"W	26.71'
L76	N78°42'39"W	28.19'
L77	S58°51'09"W	15.43'
L78	N57°47'47"W	29.73'
L79	N58°17'29"W	9.99'
L80	N49°10'38"W	15.67'
L81	N46°29'16"W	23.78'
L82	N53°17'50"W	20.12'
L83	N47°30'50"W	22.12'
L84	N49°01'16"W	28.41'
L85	N40°28'59"W	30.76'
L86	N45°33'12"W	26.50'
L87	N61°09'52"W	5.62'
L88	N18°50'21"W	1.24'
L89	N30°54'30"W	15.35'
L90	N16°08'05"W	11.06'
L91	N18°49'15"W	25.22'
L92	N11°15'03"W	17.82'
L93	N12°22'58"E	22.53'
L94	N17°40'46"E	34.19'
L95	N30°23'44"E	20.84'
L96	N32°16'48"E	14.76'
L97	N40°44'59"E	12.93'
L98	N32°29'17"E	22.17'
L99	N22°47'02"E	15.72'
L100	N26°58'24"E	7.24'

LINE TABLE		
LINE	BEARING	DISTANCE
L101	S73°45'03"W	37.13'
L102	S56°51'27"W	18.98'
L103	S57°24'01"W	6.80'
L104	S71°04'00"W	12.33'
L105	N89°21'53"W	5.61'
L106	N53°22'47"W	8.05'
L107	N41°15'22"W	23.46'
L108	N30°55'06"W	26.63'
L109	N34°14'40"W	22.39'
L110	N31°05'31"W	12.32'
L111	N30°58'10"W	16.78'
L112	N29°16'13"W	29.72'
L113	N29°56'58"W	23.01'
L114	N31°15'31"W	29.58'
L115	N28°00'53"W	19.62'
L116	N32°52'22"W	37.99'
L117	N41°40'06"W	20.77'
L118	N21°44'24"W	10.58'
L119	N18°56'51"W	18.37'
L120	N28°09'26"W	29.64'
L121	N30°51'32"W	25.59'
L122	N33°44'37"W	24.69'
L123	N21°52'04"W	26.59'
L124	N01°42'05"W	22.03'
L125	N20°59'52"W	26.17'
L126	N40°34'19"W	15.49'
L127	N33°27'05"W	3.67'
L128	S63°53'06"E	25.55'
L129	S14°13'54"W	0.57'
L130	S12°05'15"E	15.80'
L131	S37°57'22"E	11.08'
L132	S03°36'48"E	12.08'
L133	S37°20'51"W	27.68'
L134	S13°30'11"W	21.27'
L135	S30°51'02"E	18.04'
L136	S09°30'31"W	17.29'
L137	S30°29'42"E	25.09'
L138	S70°14'37"W	31.54'
L139	S83°53'20"W	47.25'
L140	S87°47'38"W	31.95'
L141	N73°22'55"W	12.17'
L142	N02°42'41"W	21.98'
L143	N06°37'33"W	30.33'
L144	N33°24'12"W	2.22'
L145	N55°53'19"W	19.99'
L146	N79°39'45"W	29.93'
L147	N81°52'21"W	30.34'
L148	N78°32'51"W	31.53'
L149	N84°24'18"W	36.00'
L150	N39°02'59"W	5.05'

LINE TABLE		
LINE	BEARING	DISTANCE
L151	N29°00'53"W	26.58'
L152	S44°56'31"W	13.99'
L153	S01°22'51"E	17.01'
L154	N63°49'22"W	19.15'
L155	N69°15'54"W	30.73'
L156	N66°40'54"W	17.61'
L157	N65°34'53"W	13.13'
L158	N71°52'59"W	7.98'
L159	S01°17'16"E	26.70'
L160	S03°21'07"E	20.70'
L161	S05°15'01"W	20.44'
L162	S26°00'42"W	27.32'
L163	S30°43'00"W	19.89'
L164	N60°51'57"W	4.89'
L165	N17°13'42"E	26.13'
L166	N15°48'45"E	32.00'
L167	N13°58'33"E	13.83'
L168	N47°32'01"W	23.99'
L169	N65°09'40"W	30.73'
L170	N46°14'14"W	26.20'
L171	N13°49'58"W	48.52'
L172	N57°14'17"W	30.82'
L173	N31°12'34"W	29.99'
L174	N34°05'31"W	48.65'
L175	N34°41'36"W	38.18'
L176	N36°13'44"W	39.51'
L177	N33°44'30"W	30.79'
L178	N40°01'28"W	15.08'
L179	S70°30'28"W	10.97'
L180	S06°42'35"W	1.20'
L181	S52°32'06"W	6.74'
L182	N36°47'35"W	25.36'
L183	N36°49'43"W	16.67'
L184	N41°56'39"W	30.64'
L185	N42°21'07"W	17.75'
L186	N54°04'38"W	22.14'
L187	N54°39'43"W	19.68'
L188	N34°29'31"E	1.78'
L189	N56°44'00"W	12.76'
L190	N63°38'19"W	23.92'
L191	N62°21'40"W	23.86'
L192	N45°10'31"W	23.12'
L193	N40°15'34"W	11.64'
L194	N41°07'10"W	34.79'
L195	N40°12'37"W	11.60'
L196	N44°51'11"W	19.28'
L197	N44°58'54"W	22.07'
L198	N42°52'03"W	15.77'
L199	N28°01'53"W	13.98'
L200	N65°15'47"W	20.89'

LINE TABLE		
LINE	BEARING	DISTANCE
L201	N47°07'42"W	33.70'
L202	S07°34'46"W	2.50'
L203	S58°09'32"W	7.39'
L204	N53°52'18"W	32.14'
L205	N53°31'23"W	30.63'
L206	N52°58'16"W	15.86'
L207	N34°21'58"E	7.05'
L208	N54°11'29"W	4.43'
L209	S47°03'34"W	7.28'
L210	N40°27'45"W	34.05'
L211	N39°43'46"W	28.87'
L212	N38°27'46"W	21.80'
L213	N61°33'25"W	0.55'
L214	N52°24'41"W	45.44'
L215	N52°08'03"W	43.95'
L216	N84°41'15"W	13.61'
L217	N58°12'09"W	25.70'
L218	N49°29'07"W	24.41'
L219	N36°21'54"W	14.98'
L220	N34°22'22"W	16.53'
L221	N39°17'22"W	1.71'
L222	N02°42'32"E	7.83'
L223	N85°05'09"W	7.59'
L224	S04°23'30"E	6.27'
L225	N84°19'50"W	12.45'
L226	N38°26'23"E	3.26'
L227	N53°10'57"W	17.63'
L228	N13°09'33"E	37.56'
L229	N04°30'50"W	16.01'
L230	N35°27'58"W	4.65'
L231	N68°13'47"W	17.07'
L232	N78°42'39"W	16.19'
L233	S58°51'09"W	14.44'
L234	S49°25'15"W	22.38'
L235	S55°49'40"W	24.39'
L236	S69°23'00"W	11.05'
L237	N13°22'01"E	3.11'
L238	N32°27'58"E	8.83'
L239	N44°17'29"E	22.87'
L240	N01°32'16"W	14.91'
L241	N57°47'47"W	20.53'
L242	N58°17'29"W	11.87'
L243	N49°10'38"W	18.25'
L244	N46°29'16"W	22.88'
L245	N53°17'50"W	19.89'
L246	N47°30'50"W	23.05'
L247	N49°01'16"W	29.95'
L248	N40°28'59"W	31.51'
L249	N45°33'12"W	21.96'
L250	N61°09'52"W	5.08'

LINE TABLE		
LINE	BEARING	DISTANCE
L251	N62°32'38"W	6.62'
L252	N18°50'21"W	8.52'
L253	N30°54'30"W	15.94'
L254	N16°08'05"W	13.71'
L255	N18°49'15"W	26.29'
L256	N11°15'03"W	24.70'
L257	N12°22'58"E	28.91'
L258	N17°40'46"E	38.13'
L259	N30°23'44"E	24.03'
L260	N32°16'48"E	17.02'
L261	N40°44'59"E	12.98'
L262	N32°29'17"E	18.25'
L263	N22°47'02"E	14.51'
L264	N26°58'24"E	8.16'
L265	S73°45'03"W	33.41'
L266	S56°51'27"W	15.38'
L267	S57°24'01"W	9.91'
L268	S71°04'00"W	19.63'
L269	N89°21'53"W	18.04'
L270	N53°22'47"W	18.83'
L271	N41°15'22"W	28.37'
L272	N30°55'06"W	28.16'
L273	N34°14'40"W	22.36'
L274	N31°05'31"W	13.03'
L275	N30°58'10"W	17.18'

LINE TABLE		
LINE	BEARING	DISTANCE
L276	N29°16'13"W	29.94'
L277	N29°56'58"W	22.57'
L278	N31°15'31"W	30.01'
L279	N28°00'53"W	19.27'
L280	N32°52'22"W	35.01'
L281	N41°40'06"W	23.24'
L282	N21°44'24"W	15.58'
L283	N18°56'51"W	16.97'
L284	N28°09'26"W	27.04'
L285	N30°51'32"W	24.37'
L286	N33°44'37"W	26.66'
L287	N21°52'04"W	33.64'
L288	N01°42'05"W	22.23'
L289	N20°59'52"W	17.61'
L290	N40°34'19"W	12.73'
L291	N33°27'05"W	0.25'
L292	N45°17'31"E	25.49'

STANDARD LAND SURVEY  
OF  
**10.5486 ACRES**  
SITUATED IN TRACTS 157-3-75  
& 158-3-22  
AREA 6-B & 6-C  
LOTS E-1 THROUGH E-12  
& 1-E, 1-W & 2  
POSSUM KINGDOM LAKE  
J. POITEVENT SURVEY  
ABSTRACT 142  
STEPHENS COUNTY, TEXAS

**AECOM**

AECOM USA GROUP, INC.  
1200 SUMMIT AVENUE, SUITE 600  
FORT WORTH, TEXAS 76102  
WWW.AECOM.COM  
817.698.6770

SHEET 2 OF 8

Date: 01/22/10

Project No. 60052528.103

60052528  
R076By.dwg

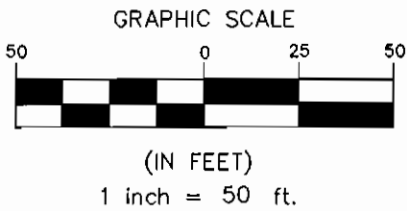
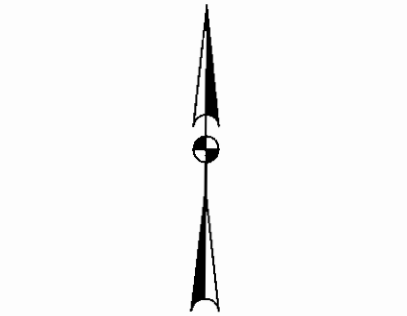
**UNNAMED ROAD #2**  
SEE NOTE 5

**POINT OF BEGINNING**  
N 7,008.567.85  
E 1,935.879.90

THE BRAZOS RIVER CONSERVATION  
AND RECLAMATION DISTRICT  
TRACT 158-3-22  
CALLED 173.97 ACRES  
VOLUME 180, PAGE 277  
D.R.S.C.T.

**F.E.R.C.  
POINT OF  
BEGINNING**

POSSUM KINGDOM CONTROL  
MONUMENT NO. 17  
S62°23'56"W, 1,187.09'



L291  
FOUND 5/8-INCH  
IRON ROD  
CONCRETE  
BOAT RAMP  
L290

F.E.R.C. BUFFER AREA  
1.7655 ACRES  
76,906 SQ. FT.

FOUND 5/8-INCH  
IRON ROD

FOUND  
5/8-INCH  
IRON ROD

FOUND 1/2-INCH  
IRON ROD

J. POITEVENT SURVEY  
ABSTRACT 142

RANDY HOBBS ET UX  
VOLUME 1806, PAGE 10  
D.R.S.C.T.

THE BRAZOS RIVER CONSERVATION  
AND RECLAMATION DISTRICT  
TRACT 158-3-22  
CALLED 173.97 ACRES  
VOLUME 180, PAGE 277  
D.R.S.C.T.

8.7831 ACRES  
382,591 SQ. FT.  
LEASE BLOCK R076  
AREA: 6-B

**POSSUM KINGDOM LAKE**  
THE BRAZOS RIVER CONSERVATION  
AND RECLAMATION DISTRICT  
TRACT 158-3-22  
CALLED 173.97 ACRES  
VOLUME 180, PAGE 277  
D.R.S.C.T.

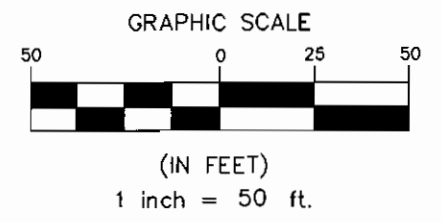
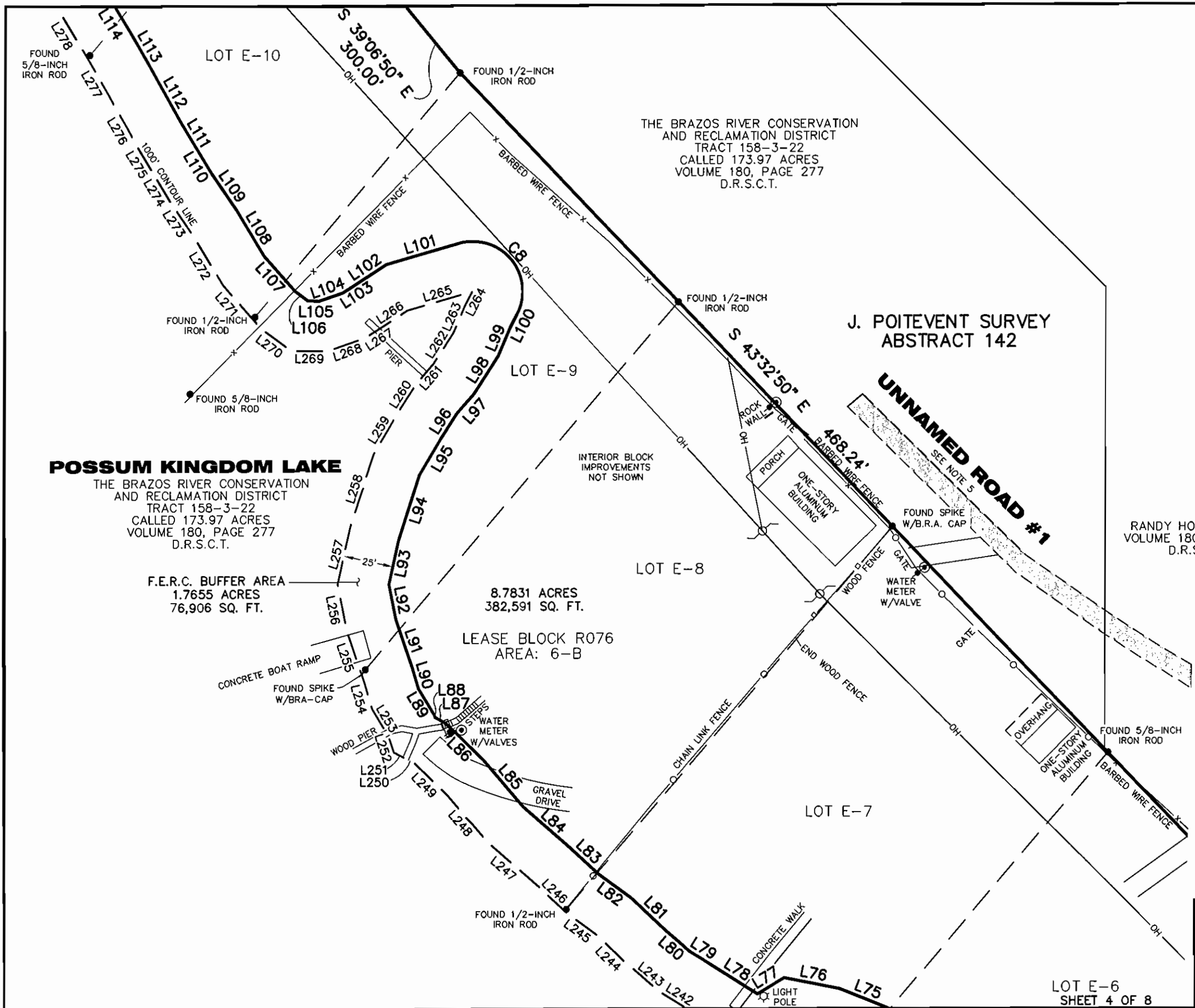
STANDARD LAND SURVEY  
OF  
**10.5486 ACRES**  
SITUATED IN TRACTS 157-3-75  
& 158-3-22  
AREA 6-B & 6-C  
LOTS E-1 THROUGH E-12  
& 1-E, 1-W & 2  
POSSUM KINGDOM LAKE  
J. POITEVENT SURVEY  
ABSTRACT 142  
STEPHENS COUNTY, TEXAS

<b>AECOM</b>	AECOM USA GROUP, INC. 1200 SUMMIT AVENUE, SUITE 600 FORT WORTH, TEXAS 76102 WWW.AECOM.COM 817.698.6770	
	Date: 01/22/10	Project No. 60052528.103

SHEET 3 OF 8

NO PART OR PARTS OF THIS DRAWING MAY BE REPRODUCED OR TRANSMITTED IN ANY WAY OR FORM (ELECTRONIC, MECHANICAL, PHOTOCOPYING, OR OTHERWISE) WITHOUT THE EXPRESS WRITTEN PERMISSION OF AECOM.

J:\60052528 Possum Kingdom Lake\102.01 Assamiation of Data\Group 11\R076 JDF\DRAWINGS\60052528 R076By.dwg 1/22/2010 1:41:12 PM CST



THE BRAZOS RIVER CONSERVATION  
AND RECLAMATION DISTRICT  
TRACT 158-3-22  
CALLED 173.97 ACRES  
VOLUME 180, PAGE 277  
D.R.S.C.T.

**POSSUM KINGDOM LAKE**  
THE BRAZOS RIVER CONSERVATION  
AND RECLAMATION DISTRICT  
TRACT 158-3-22  
CALLED 173.97 ACRES  
VOLUME 180, PAGE 277  
D.R.S.C.T.

J. POITEVENT SURVEY  
ABSTRACT 142

RANDY HOBBS ET UX  
VOLUME 1806, PAGE 10  
D.R.S.C.T.

F.E.R.C. BUFFER AREA  
1.7655 ACRES  
76,906 SQ. FT.

8.7831 ACRES  
382,591 SQ. FT.

LEASE BLOCK R076  
AREA: 6-B

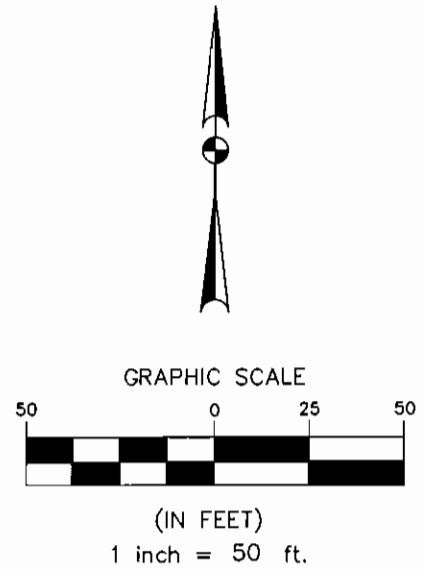
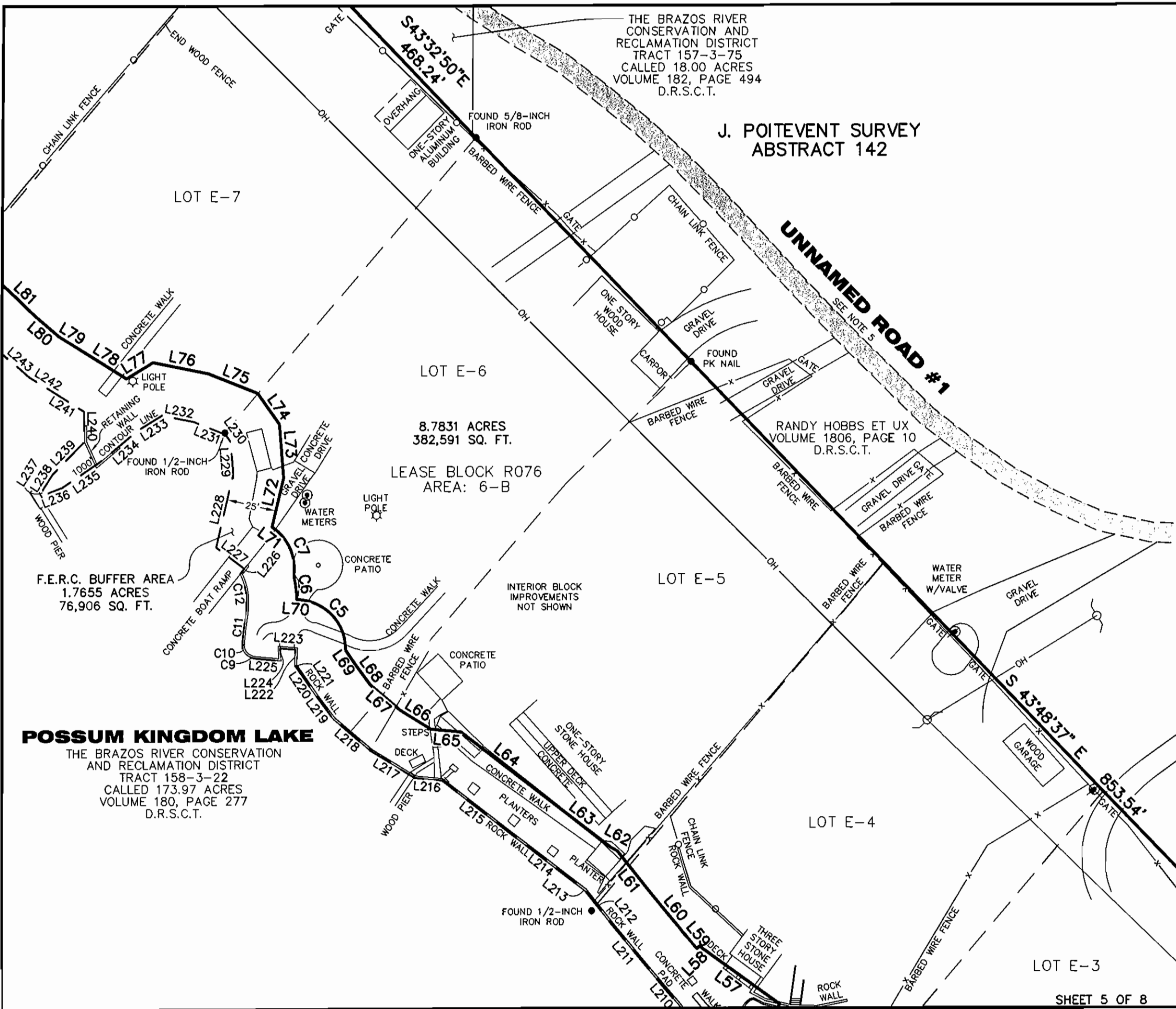
STANDARD LAND SURVEY  
OF  
**10.5486 ACRES**  
SITUATED IN TRACTS 157-3-75  
& 158-3-22  
AREA 6-B & 6-C  
LOTS E-1 THROUGH E-12  
& 1-E, 1-W & 2  
POSSUM KINGDOM LAKE  
J. POITEVENT SURVEY  
ABSTRACT 142  
STEPHENS COUNTY, TEXAS

<b>AECOM</b>	AECOM USA GROUP, INC. 1200 SUMMIT AVENUE, SUITE 600 FORT WORTH, TEXAS 76102 WWW.AECOM.COM 817.698.6770	
	Date: 01/22/10	Project No. 60052528.103

LOT E-6  
SHEET 4 OF 8

NO PART OR PARTS OF THIS DRAWING MAY BE REPRODUCED OR TRANSMITTED IN ANY WAY OR FORM (ELECTRONIC, MECHANICAL, PHOTOCOPIING, OR OTHERWISE) WITHOUT THE EXPRESS WRITTEN PERMISSION OF AECOM.

J:\60052528 Possum Kingdom Lake\102.01 Assimilation of Data\Group 11\1076.DWG\DRAWINGS\60052528 R076By.dwg 1/22/2010 1:41:12 PM CST



STANDARD LAND SURVEY  
 OF  
**10.5486 ACRES**  
 SITUATED IN TRACTS 157-3-75  
 & 158-3-22  
 AREA 6-B & 6-C  
 LOTS E-1 THROUGH E-12  
 & 1-E, 1-W & 2  
 POSSUM KINGDOM LAKE  
 J. POITEVENT SURVEY  
 ABSTRACT 142  
 STEPHENS COUNTY, TEXAS

**POSSUM KINGDOM LAKE**  
 THE BRAZOS RIVER CONSERVATION  
 AND RECLAMATION DISTRICT  
 TRACT 158-3-22  
 CALLED 173.97 ACRES  
 VOLUME 180, PAGE 277  
 D.R.S.C.T.

8.7831 ACRES  
 382,591 SQ. FT.  
 LEASE BLOCK R076  
 AREA: 6-B

THE BRAZOS RIVER  
 CONSERVATION AND  
 RECLAMATION DISTRICT  
 TRACT 157-3-75  
 CALLED 18.00 ACRES  
 VOLUME 182, PAGE 494  
 D.R.S.C.T.

J. POITEVENT SURVEY  
 ABSTRACT 142

**UNNAMED ROAD #1**  
 SEE NOTE 5

RANDY HOBBS ET UX  
 VOLUME 1806, PAGE 10  
 D.R.S.C.T.

S 43°48'37" E  
 853.54'

**AECOM**

AECOM USA GROUP, INC.  
 1200 SUMMIT AVENUE, SUITE 600  
 FORT WORTH, TEXAS 76102  
 WWW.AECOM.COM  
 817.698.6770

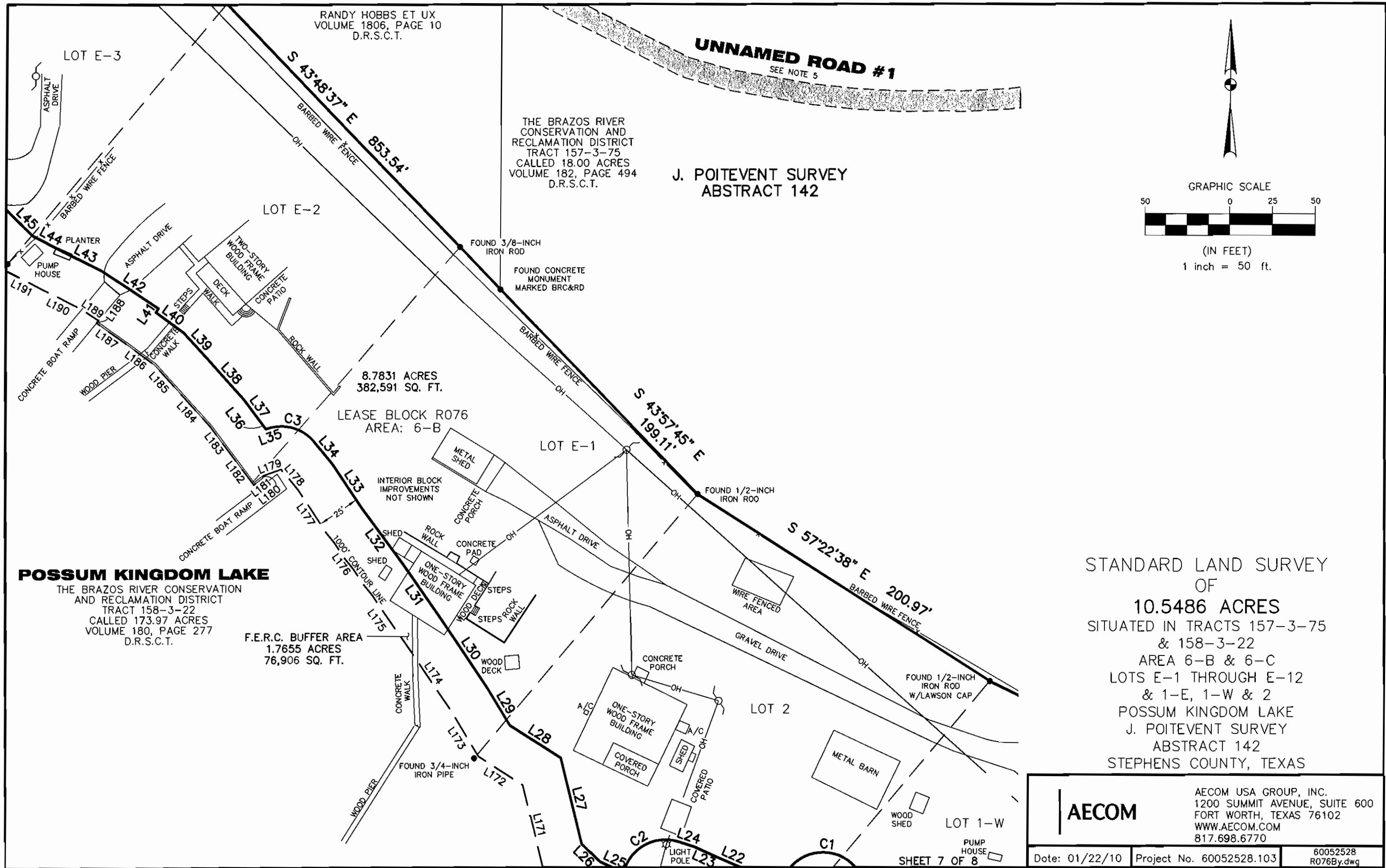
Date: 01/22/10 Project No. 60052528.103 60052528 R076By.dwg

SHEET 5 OF 8

NO PART OR PARTS OF THIS DRAWING MAY BE REPRODUCED OR TRANSMITTED IN ANY WAY OR FORM (ELECTRONIC, MECHANICAL, PHOTOCOPIING, OR OTHERWISE) WITHOUT THE EXPRESS WRITTEN PERMISSION OF AECOM.

J:\60052528-Possum Kingdom Lake\102.01-Asmiration of Data\Group 11\R076.dwg\DRAWINGS\60052528 R076By.dwg 1/22/2010 1:41:12 PM CST



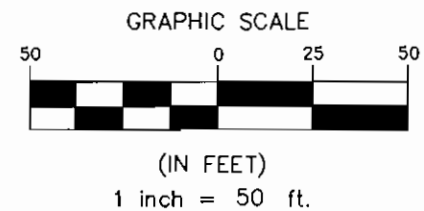


RANDY HOBBS ET UX  
VOLUME 1806, PAGE 10  
D.R.S.C.T.

**UNNAMED ROAD #1**  
SEE NOTE 5

THE BRAZOS RIVER  
CONSERVATION AND  
RECLAMATION DISTRICT  
TRACT 157-3-75  
CALLED 18.00 ACRES  
VOLUME 182, PAGE 494  
D.R.S.C.T.

**J. POITEVENT SURVEY  
ABSTRACT 142**



8.7831 ACRES  
382,591 SQ. FT.

LEASE BLOCK R076  
AREA: 6-B

**POSSUM KINGDOM LAKE**  
THE BRAZOS RIVER CONSERVATION  
AND RECLAMATION DISTRICT  
TRACT 158-3-22  
CALLED 173.97 ACRES  
VOLUME 180, PAGE 277  
D.R.S.C.T.

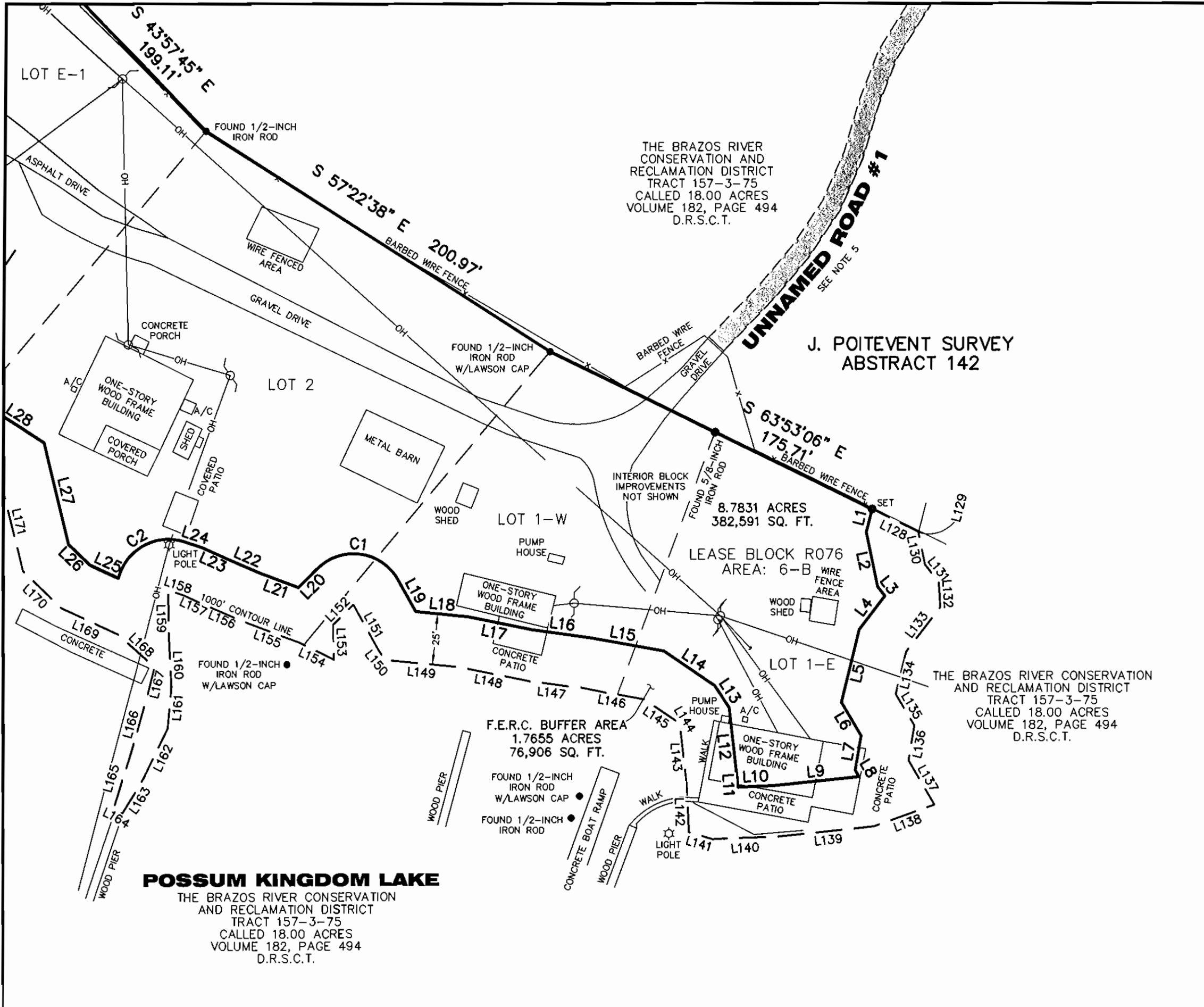
F.E.R.C. BUFFER AREA  
1.7655 ACRES  
76,906 SQ. FT.

STANDARD LAND SURVEY  
OF  
**10.5486 ACRES**  
SITUATED IN TRACTS 157-3-75  
& 158-3-22  
AREA 6-B & 6-C  
LOTS E-1 THROUGH E-12  
& 1-E, 1-W & 2  
POSSUM KINGDOM LAKE  
J. POITEVENT SURVEY  
ABSTRACT 142  
STEPHENS COUNTY, TEXAS

<b>AECOM</b>	AECOM USA GROUP, INC. 1200 SUMMIT AVENUE, SUITE 600 FORT WORTH, TEXAS 76102 WWW.AECOM.COM 817.698.6770	
	Date: 01/22/10	Project No. 60052528.103
		60052528 R076By.dwg

NO PART OR PARTS OF THIS DRAWING MAY BE REPRODUCED OR TRANSMITTED IN ANY WAY OR FORM (ELECTRONIC, MECHANICAL, PHOTOCOPYING, OR OTHERWISE) WITHOUT THE EXPRESS WRITTEN PERMISSION OF AECOM.

J:\60052528 Possum Kingdom Lake\102.01 Assimilation of Data\Group 11\R076 JDF\_DRAWINGS\60052528 R076By.dwg 1/22/2010 1:41:12 PM CST



THE BRAZOS RIVER  
CONSERVATION AND  
RECLAMATION DISTRICT  
TRACT 157-3-75  
CALLED 18.00 ACRES  
VOLUME 182, PAGE 494  
D.R.S.C.T.

J. POITEVENT SURVEY  
ABSTRACT 142

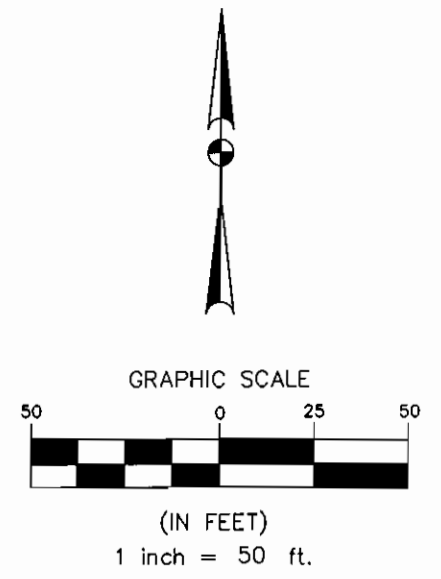
8.7831 ACRES  
382,591 SQ. FT.

LEASE BLOCK R076  
AREA: 6-B

THE BRAZOS RIVER CONSERVATION  
AND RECLAMATION DISTRICT  
TRACT 157-3-75  
CALLED 18.00 ACRES  
VOLUME 182, PAGE 494  
D.R.S.C.T.

**POSSUM KINGDOM LAKE**  
THE BRAZOS RIVER CONSERVATION  
AND RECLAMATION DISTRICT  
TRACT 157-3-75  
CALLED 18.00 ACRES  
VOLUME 182, PAGE 494  
D.R.S.C.T.

F.E.R.C. BUFFER AREA  
1.7655 ACRES  
76,906 SQ. FT.



STANDARD LAND SURVEY  
OF  
**10.5486 ACRES**  
SITUATED IN TRACTS 157-3-75  
& 158-3-22  
AREA 6-B & 6-C  
LOTS E-1 THROUGH E-12  
& 1-E, 1-W & 2  
POSSUM KINGDOM LAKE  
J. POITEVENT SURVEY  
ABSTRACT 142  
STEPHENS COUNTY, TEXAS

**AECOM**  
AECOM USA GROUP, INC.  
1200 SUMMIT AVENUE, SUITE 600  
FORT WORTH, TEXAS 76102  
WWW.AECOM.COM  
817.698.6770

NO PART OR PARTS OF THIS DRAWING MAY BE REPRODUCED OR TRANSMITTED IN ANY WAY OR FORM (ELECTRONIC, MECHANICAL, PHOTOCOPYING, OR OTHERWISE) WITHOUT THE EXPRESS WRITTEN PERMISSION OF AECOM.

J:\60052528 Possum Kingdom Lake\102.01 Assimilation of Data\Group 11\R076 JDF\DRAWINGS\60052528 R076By.dwg 1/22/2010 1:41:12 PM CST