

VICINITY MAP
NOT TO SCALE

ACREAGE TABLE	
LEASE BLOCK:	11.1954 ACRES
F.E.R.C. BUFFER AREA:	2.0889 ACRES
SURVEY BLOCK:	13.2843 ACRES TOTAL

- LEGEND
- = LEASE CORNER MARKER
"AS NOTED" (SEE NOTE 3)
 - OH— = OVERHEAD ELECTRIC
 - = POWER POLE
 - ⊙ = WATER METER
 - ⊕ = IRRIGATION CONTROL VALVE
 - ⊙ = LIGHT POLE
 - ∇ = FLAG POLE
 - ⋈ = GUY ANCHOR
 - ⊙ = WATER VALVE

CURVE TABLE					
CURVE	LENGTH	DELTA	RADIUS	CHORD BEARING	CHORD
C1	83.24'	25°06'09"	190.00'	N87°55'36"E	82.58'
C2	111.94'	34°40'03"	185.00'	S87°17'27"E	110.24'

NOTES:

- 1) BEARINGS AND COORDINATES SHOWN HEREON ARE BASED ON THE NORTH AMERICAN DATUM OF 1983, TEXAS COORDINATE SYSTEM, NORTH CENTRAL ZONE (4202).
- 2) 1,000-FOOT CONTOUR ELEVATION OF POSSUM KINGDOM LAKE IS DETERMINED BASED ON MEASUREMENTS FROM THE TOP OF THE EXISTING SPILLWAY CREST GATES AT THE MORRIS SHEPPARD DAM BEING AT ELEVATION 1,000- FEET ABOVE MEAN SEA LEVEL AS NOTED IN FEDERAL POWER COMMISSION REPORT PROJECT NO. 1490 - TEXAS ON JUNE 2, 1938.
- 3) SET = 5/8" IRON ROD W/CAP STAMPED "AECOM" SET; D.R.P.P.C.T.= DEED RECORDS, PALO PINTO COUNTY, TEXAS; P.R.P.P.C.T.= PLAT RECORDS, PALO PINTO COUNTY, TEXAS; F.E.R.C.= FEDERAL ENERGY REGULATORY COMMISSION; J.R.P.P.C.T.= JUDGEMENT RECORDS, PALO PINTO COUNTY, TEXAS. LFS = 5/8" IRON ROD W/CAP STAMPED "LINKFIELD RPLS 5087" FOUND.
- 4) METES AND BOUNDS DESCRIPTIONS TO ACCOMPANY THIS SURVEY.
- 5) LOCATION, POSITION AND GEOMETRY OF ROAD RIGHTS-OF-WAY SHOWN AND DESCRIBED HEREON BASED ON SURVEYS PROVIDED BY LINK FIELD SERVICES, NO DEED OF RECORD HAS BEEN RECORDED AT THIS TIME FOR SAME UNLESS NOTED OTHERWISE.
- 6) IMPROVEMENTS SHOWN HEREON TIED FEBRUARY 2010.

SURVEYORS CERTIFICATE

TO: BRAZOS RIVER AUTHORITY, PATTERSON PK LAND PARTNERSHIP, LTD., AND HERITAGE TITLE COMPANY OF AUSTIN, INC.

I, MUNIR ODHWANI, A REGISTERED PROFESSIONAL LAND SURVEYOR IN THE STATE OF TEXAS, REGISTRATION NUMBER 5996, HEREBY STATE THAT A SURVEY OF THE REAL PROPERTY DESCRIBED IN SEPARATE LEGAL DESCRIPTION AS NOTED HEREON, WAS ACTUALLY MADE UPON THE GROUND UNDER MY DIRECTION AND SUPERVISION, AND THAT TO THE BEST OF MY PROFESSIONAL KNOWLEDGE AND BELIEF, THE INFORMATION SHOWN HEREON IS CORRECT AS DETERMINED BY SAID SURVEY.

THIS SURVEY SUBSTANTIALLY COMPLIES WITH THE CURRENT TEXAS SOCIETY OF PROFESSIONAL SURVEYORS STANDARDS AND SPECIFICATIONS FOR A CATEGORY 1B, CONDITION II SURVEY.

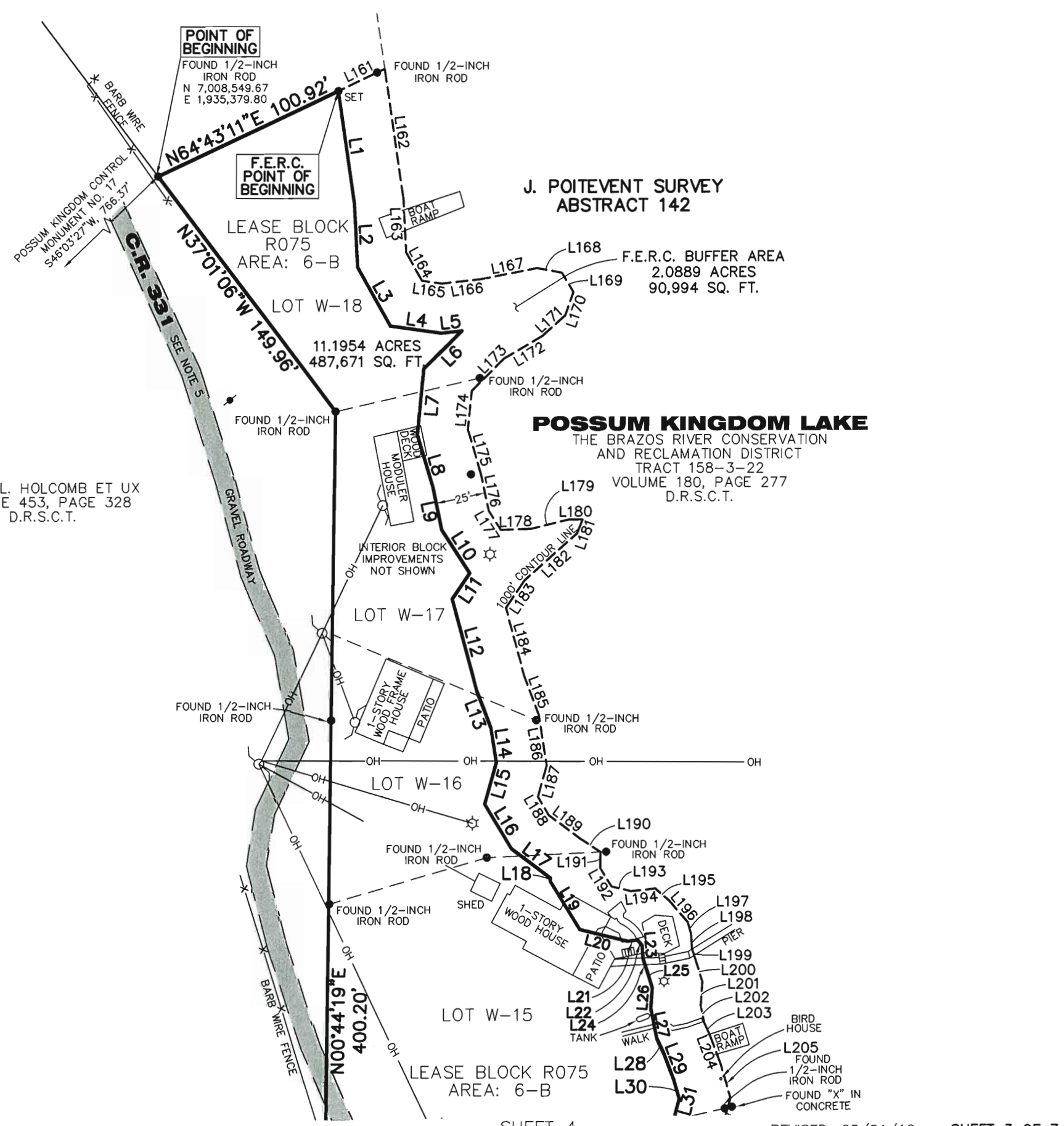

MUNIR ODHWANI
REGISTERED PROFESSIONAL LAND SURVEYOR
TEXAS REGISTRATION NO. 5996



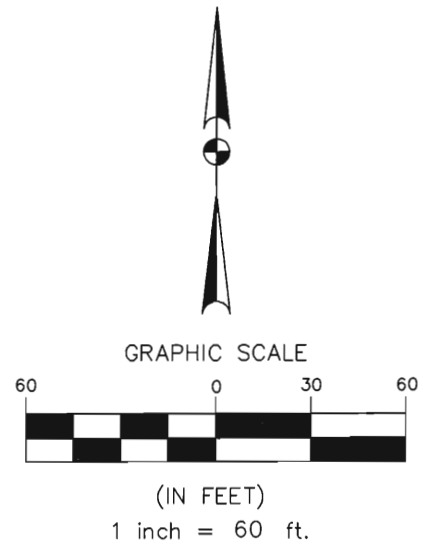
DATE: MAY 21, 2010

STANDARD LAND SURVEY
OF
13.2843 ACRES
SITUATED IN TRACT 158-3-22
AREA 6-B, LOTS W-1-A, W-1 - W-18
J. POITEVENT SURVEY
ABSTRACT 142
STEPHENS COUNTY, TEXAS

	AECOM USA GROUP, INC. 1200 SUMMIT AVENUE, SUITE 600 FORT WORTH, TEXAS 76102 WWW.AECOM.COM 817.698.6770
	60052528 R075By.dwg



JAMES L. HOLCOMB ET UX
VOLUME 453, PAGE 328
D.R.S.C.T.



STANDARD LAND SURVEY
OF
13.2843 ACRES
SITUATED IN TRACT 158-3-22
AREA 6-B, LOTS W-1-A, W-1 - W-18
J. POITEVENT SURVEY
ABSTRACT 142
STEPHENS COUNTY, TEXAS

AECOM	AECOM USA GROUP, INC. 1200 SUMMIT AVENUE, SUITE 600 FORT WORTH, TEXAS 76102 WWW.AECOM.COM 817.698.6770	
	Date: 01/11/10	Project No. 60102581

NO PART OR PARTS OF THIS DRAWING MAY BE REPRODUCED OR TRANSMITTED IN ANY WAY OR FORM (ELECTRONIC, MECHANICAL, PHOTOCOPYING, OR OTHERWISE) WITHOUT THE EXPRESS WRITTEN PERMISSION OF AECOM.

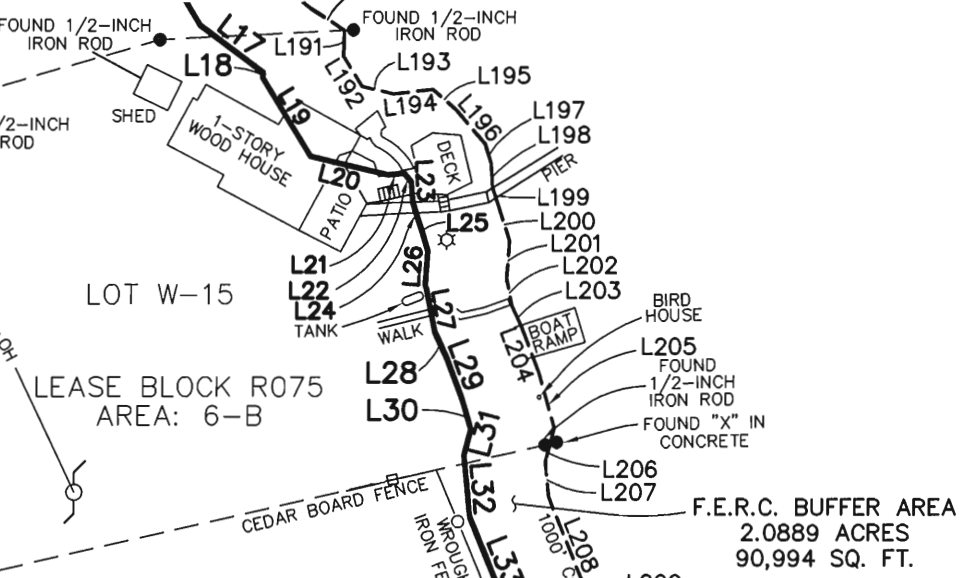
J:\60052528 Possum Kingdom Lake\102.01 Assimilation of Data\Group 11\R073\60052528 R073By.dwg 1/4/2010 2:50:24 PM CST

SHEET 6

JAMES L. HOLCOMB ET UX
VOLUME 453, PAGE 328
D.R.S.C.T.

THE BRAZOS RIVER CONSERVATION
AND RECLAMATION DISTRICT
TRACT 158-3-22
VOLUME 180, PAGE 277
D.R.S.C.T.

SHEET 3



J. POITEVENT SURVEY
ABSTRACT 142

LOT W-14

11.1954 ACRES
487,671 SQ. FT.

N04°07'50"W
243.48'

INTERIOR BLOCK
IMPROVEMENTS
NOT SHOWN

POSSUM KINGDOM LAKE
THE BRAZOS RIVER CONSERVATION
AND RECLAMATION DISTRICT
TRACT 158-3-22
VOLUME 180, PAGE 277
D.R.S.C.T.

F.E.R.C. BUFFER AREA
2.0889 ACRES
90,994 SQ. FT.

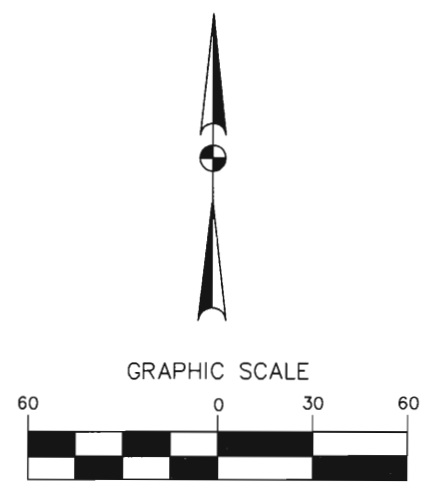
LOT W-13

LOT W-12

LOT W-6

INTERIOR BLOCK
IMPROVEMENTS
NOT SHOWN

LOT W-7



(IN FEET)
1 inch = 60 ft.

STANDARD LAND SURVEY
OF
13.2843 ACRES
SITUATED IN TRACT 158-3-22
AREA 6-B, LOTS W-1-A, W-1 - W-18
J. POITEVENT SURVEY
ABSTRACT 142
STEPHENS COUNTY, TEXAS

AECOM

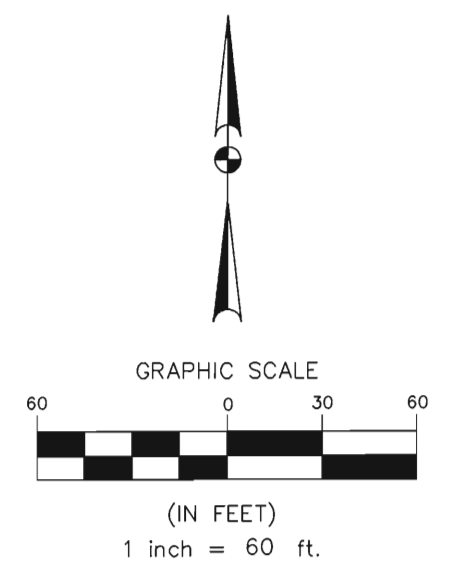
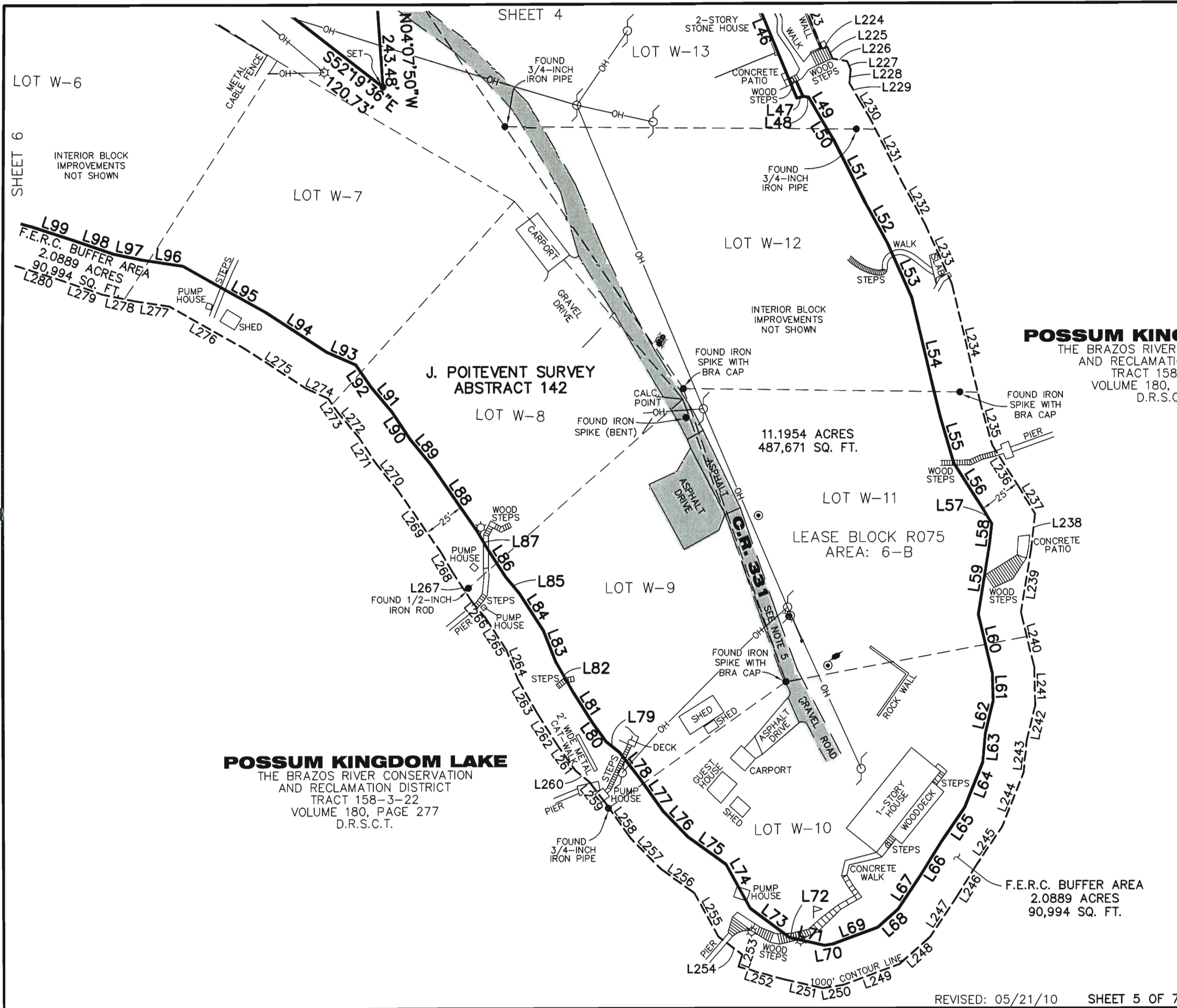
AECOM USA GROUP, INC.
1200 SUMMIT AVENUE, SUITE 600
FORT WORTH, TEXAS 76102
WWW.AECOM.COM
817.698.6770

Date: 01/11/10 Project No. 60102581 60052528 R075By.dwg

REvised: 05/21/10 SHEET 4 OF 7

NO PART OR PARTS OF THIS DRAWING MAY BE REPRODUCED OR RETRANSMITTED IN ANY WAY OR FORM (ELECTRONIC, MECHANICAL, PHOTOCOPYING, OR OTHERWISE) WITHOUT THE EXPRESS WRITTEN PERMISSION OF AECOM.

J:\60052528_Possom Kingdom Lake\102.01_Assimilation of Data\Group 11\1073\60052528 R075By.dwg 1/4/2010 2:50:24 PM CST



SHEET 6
 INTERIOR BLOCK IMPROVEMENTS NOT SHOWN

L99 L98 L97 L96
 F.E.R.C. BUFFER AREA
 2.0889 ACRES
 90,994 SQ. FT.
 L280 L279 L278 L277

POSSUM KINGDOM LAKE
 THE BRAZOS RIVER CONSERVATION
 AND RECLAMATION DISTRICT
 TRACT 158-3-22
 VOLUME 180, PAGE 277
 D.R.S.C.T.

**J. POITEVENT SURVEY
 ABSTRACT 142**

11.1954 ACRES
 487,671 SQ. FT.

LEASE BLOCK R075
 AREA: 6-B

POSSUM KINGDOM LAKE
 THE BRAZOS RIVER CONSERVATION
 AND RECLAMATION DISTRICT
 TRACT 158-3-22
 VOLUME 180, PAGE 277
 D.R.S.C.T.

STANDARD LAND SURVEY
 OF
13.2843 ACRES
 SITUATED IN TRACT 158-3-22
 AREA 6-B, LOTS W-1-A, W-1 - W-18
 J. POITEVENT SURVEY
 ABSTRACT 142
 STEPHENS COUNTY, TEXAS

F.E.R.C. BUFFER AREA
 2.0889 ACRES
 90,994 SQ. FT.

AECOM	AECOM USA GROUP, INC. 1200 SUMMIT AVENUE, SUITE 600 FORT WORTH, TEXAS 76102 WWW.AECOM.COM 817.698.6770	
	Date: 01/11/10	Project No. 60102581

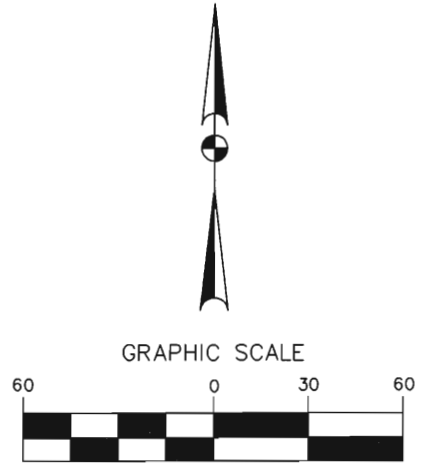
REVISED: 05/21/10 SHEET 5 OF 7

NO PART OR PARTS OF THIS DRAWING MAY BE REPRODUCED OR TRANSMITTED IN ANY WAY OR FORM (ELECTRONIC, MECHANICAL, PHOTOCOPYING, OR OTHERWISE) WITHOUT THE EXPRESS WRITTEN PERMISSION OF AECOM.

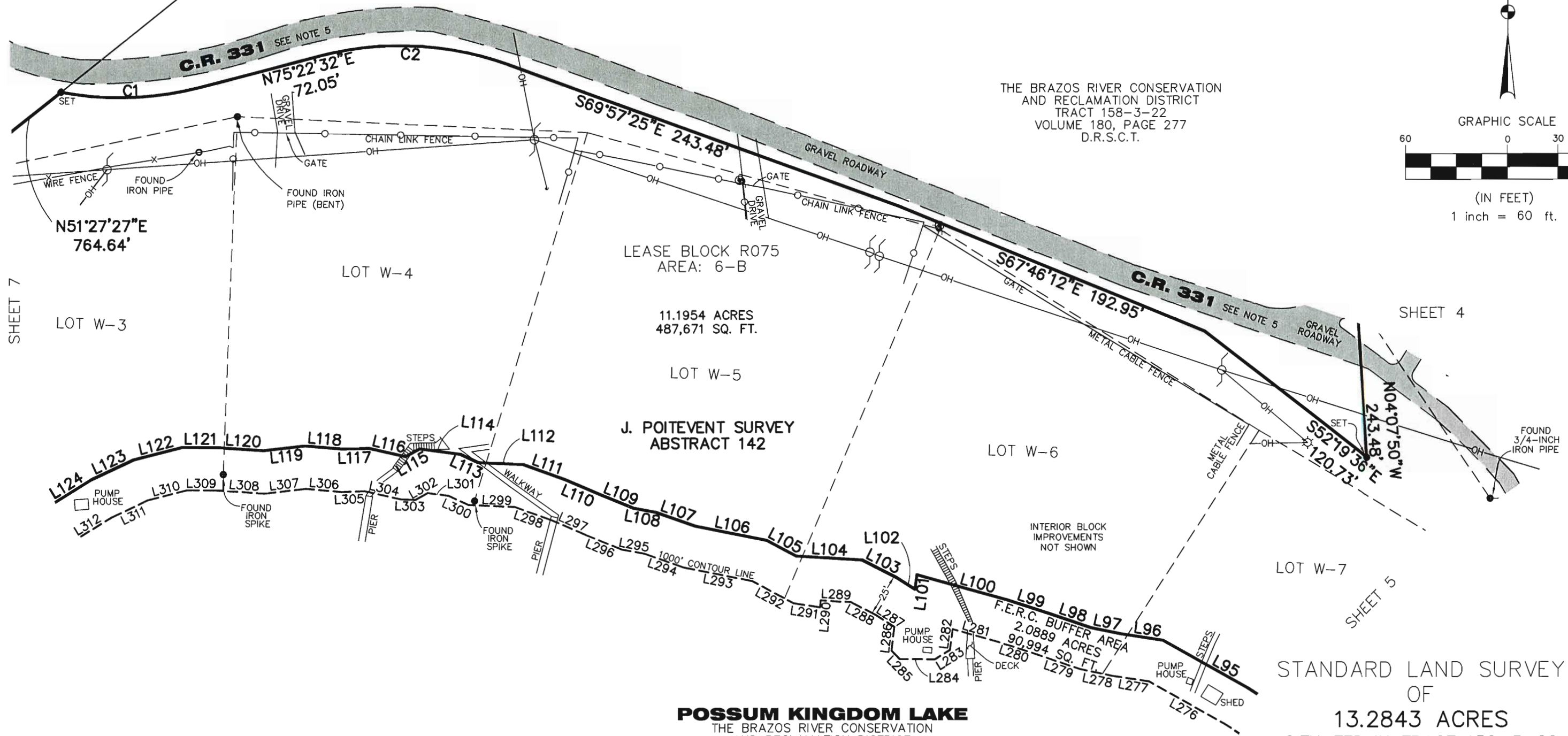
J:\60052528 Possum Kingdom Lake\102.01 Assimilation of Data\Group 11\R073\60052528 R073By.dwg 1/4/2010 2:50:24 PM CST

JAMES L. HOLCOMB ET UX
VOLUME 453, PAGE 328
D.R.S.C.T.

THE BRAZOS RIVER CONSERVATION
AND RECLAMATION DISTRICT
TRACT 158-3-22
VOLUME 180, PAGE 277
D.R.S.C.T.



(IN FEET)
1 inch = 60 ft.



LEASE BLOCK R075
AREA: 6-B
11.1954 ACRES
487,671 SQ. FT.

J. POITEVENT SURVEY
ABSTRACT 142

F.E.R.C. BUFFER AREA
2.0889 ACRES
90,994 SQ. FT.

POSSUM KINGDOM LAKE
THE BRAZOS RIVER CONSERVATION
AND RECLAMATION DISTRICT
TRACT 158-3-22
VOLUME 180, PAGE 277
D.R.S.C.T.

STANDARD LAND SURVEY
OF
13.2843 ACRES
SITUATED IN TRACT 158-3-22
AREA 6-B, LOTS W-1-A, W-1 - W-18
J. POITEVENT SURVEY
ABSTRACT 142
STEPHENS COUNTY, TEXAS

AECOM	AECOM USA GROUP, INC. 1200 SUMMIT AVENUE, SUITE 600 FORT WORTH, TEXAS 76102 WWW.AECOM.COM 817.698.6770		
	REVISD: 05/21/10	SHEET 6 OF 7	Date: 01/11/10

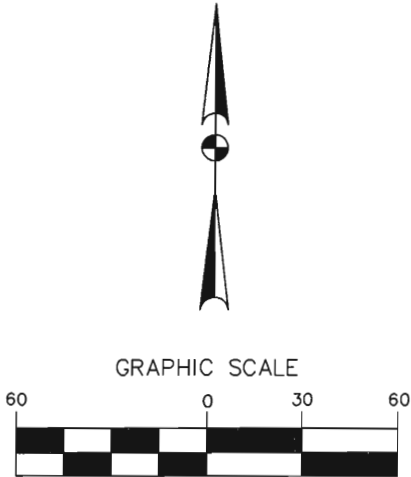
SHEET 7

SHEET 4

SHEET 5

NO PART OR PARTS OF THIS DRAWING MAY BE REPRODUCED OR RE TRANSMITTED IN ANY WAY OR FORM (ELECTRONIC, MECHANICAL, PHOTOCOPIING, OR OTHERWISE) WITHOUT THE EXPRESS WRITTEN PERMISSION OF AECOM.

J:\60052528 Possum Kingdom Lake\102.01 Assimilation of Data\Group 11\R073\60052528 R073By.dwg 1/4/2010 2:50:24 PM CST



GRAPHIC SCALE

(IN FEET)
1 inch = 60 ft.

THE BRAZOS RIVER CONSERVATION
AND RECLAMATION DISTRICT
TRACT 158-3-22
VOLUME 180, PAGE 277
D.R.S.C.T.

JAMES L. HOLCOMB ET UX
VOLUME 453, PAGE 328
D.R.S.C.T.

TROY G. BOOKOUT ET UX
VOLUME 475, PAGE 551
D.R.S.C.T.

JAMES L. HOLCOMB ET UX
VOLUME 453, PAGE 328
D.R.S.C.T.

J. POITEVENT SURVEY
ABSTRACT 142

POSSUM KINGDOM LAKE

THE BRAZOS RIVER CONSERVATION
AND RECLAMATION DISTRICT
TRACT 158-3-22
VOLUME 180, PAGE 277
D.R.S.C.T.

STANDARD LAND SURVEY
OF

13.2843 ACRES

SITUATED IN TRACT 158-3-22
AREA 6-B, LOTS W-1-A, W-1 - W-18

J. POITEVENT SURVEY
ABSTRACT 142

STEPHENS COUNTY, TEXAS

AECOM

AECOM USA GROUP, INC.
1200 SUMMIT AVENUE, SUITE 600
FORT WORTH, TEXAS 76102
WWW.AECOM.COM
817.698.6770

REVISED: 05/21/10 SHEET 7 OF 7

Date: 01/11/10

Project No. 60102581

60052528
R075B.dwg