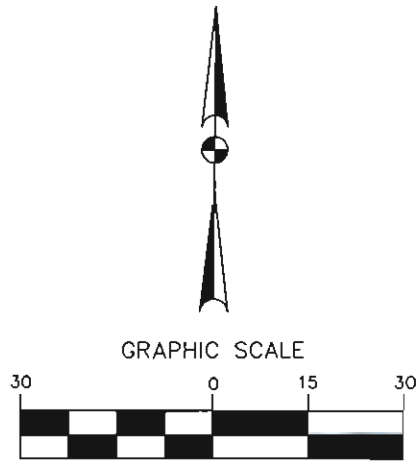


VICINITY MAP  
NOT TO SCALE



(IN FEET)  
1 inch = 30 ft.

ACREAGE TABLE	
LEASE BLOCK:	0.1592 OF ONE ACRE
F.E.R.C. BUFFER AREA:	0.1558 OF ONE ACRE
SURVEY BLOCK:	0.3150 OF ONE ACRE TOTAL

LEGEND  
● = LEASE CORNER MARKER  
"AS NOTED"

CURVE TABLE					
CURVE	LENGTH	DELTA	RADIUS	CHORD BEARING	CHORD
C1	17.15	39°18'14"	25.00	S81°58'44"W	16.82'

NOTES:  
1) BEARINGS AND COORDINATES SHOWN HEREON ARE BASED ON THE NORTH AMERICAN DATUM OF 1983, TEXAS COORDINATE SYSTEM, NORTH CENTRAL ZONE (4202).

2) 1,000-FOOT CONTOUR ELEVATION OF POSSUM KINGDOM LAKE IS DETERMINED BASED ON MEASUREMENTS FROM THE TOP OF THE EXISTING SPILLWAY CREST GATES AT THE MORRIS SHEPPARD DAM BEING AT ELEVATION 1,000- FEET ABOVE MEAN SEA LEVEL AS NOTED IN FEDERAL POWER COMMISSION REPORT PROJECT NO. 1490 - TEXAS ON JUNE 2, 1938.

3) SET = 5/8" IRON ROD W/CAP STAMPED "AECOM" SET; D.R.S.C.T.= DEED RECORDS, STEPHENS COUNTY, TEXAS; P.R.S.C.T.= PLAT RECORDS, STEPHENS COUNTY, TEXAS; F.E.R.C.= FEDERAL ENERGY REGULATORY COMMISSION; J.R.S.C.T.= JUDGEMENT RECORDS, STEPHENS COUNTY, TEXAS.

4) METES AND BOUNDS DESCRIPTIONS TO ACCOMPANY THIS SURVEY.

**SURVEYORS CERTIFICATE**

TO: BRAZOS RIVER AUTHORITY, PATTERSON PK LAND PARTNERSHIP, LTD., AND HERITAGE TITLE COMPANY OF AUSTIN, INC.

I, MUNIR ODHWANI, A REGISTERED PROFESSIONAL LAND SURVEYOR IN THE STATE OF TEXAS, REGISTRATION NUMBER 5996, HEREBY STATE THAT A SURVEY OF THE REAL PROPERTY DESCRIBED IN SEPARATE LEGAL DESCRIPTION AS NOTED HEREON, WAS ACTUALLY MADE UPON THE GROUND UNDER MY DIRECTION AND SUPERVISION, AND THAT TO THE BEST OF MY PROFESSIONAL KNOWLEDGE AND BELIEF, THE INFORMATION SHOWN HEREON IS CORRECT AS DETERMINED BY SAID SURVEY.

THIS SURVEY SUBSTANTIALLY COMPLIES WITH THE CURRENT TEXAS SOCIETY OF PROFESSIONAL SURVEYORS STANDARDS AND SPECIFICATIONS FOR A CATEGORY 1B, CONDITION II SURVEY.

*Munir Odhwani*

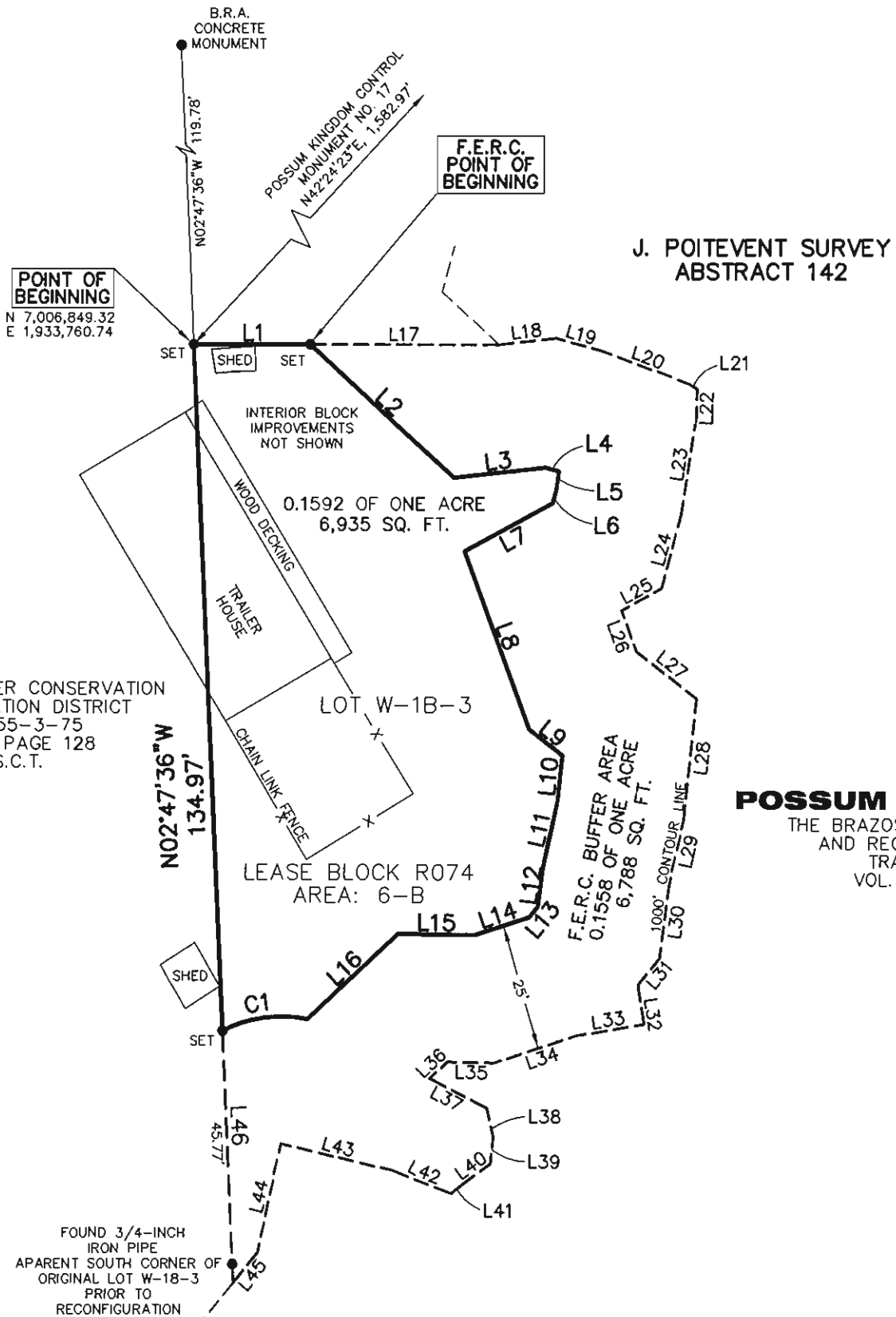
MUNIR ODHWANI  
REGISTERED PROFESSIONAL LAND SURVEYOR  
TEXAS REGISTRATION NO. 5996

DATE: FEBRUARY 12, 2010



THE BRAZOS RIVER CONSERVATION AND RECLAMATION DISTRICT  
TRACT 155-3-75  
VOL. 184, PAGE 128  
D.R.S.C.T.

FOUND 3/4-INCH IRON PIPE APARENT SOUTH CORNER OF ORIGINAL LOT W-18-3 PRIOR TO RECONFIGURATION



LINE TABLE		
LINE	BEARING	DISTANCE
L1	N90°00'00"E	22.84'
L2	S47°23'29"E	38.59'
L3	N83°34'28"E	17.98'
L4	S74°54'38"E	2.83'
L5	S08°18'03"W	3.38'
L6	S14°23'07"W	3.00'
L7	S61°08'19"W	19.62'
L8	S20°14'40"E	37.20'
L9	S51°55'51"E	8.34'
L10	S05°43'22"W	8.50'
L11	S11°42'58"W	13.68'
L12	S07°02'43"W	7.82'
L13	S38°42'10"W	2.72'
L14	S71°28'36"W	11.20'
L15	N88°59'34"W	14.95'
L16	S46°36'13"W	24.48'
L17	S90°00'00"E	36.99'
L18	N83°34'28"E	11.27'
L19	S74°54'38"E	9.10'
L20	S69°26'17"E	18.47'
L21	S57°54'56"E	2.00'
L22	S01°32'30"W	5.54'
L23	S08°18'03"W	19.12'

LINE TABLE		
LINE	BEARING	DISTANCE
L24	S14°23'07"W	15.13'
L25	S61°08'19"W	8.93'
L26	S20°14'40"E	8.61'
L27	S51°55'51"E	15.00'
L28	S05°43'22"W	23.57'
L29	S11°42'58"W	13.97'
L30	S07°02'43"W	13.88'
L31	S38°42'10"W	6.67'
L32	S08°56'04"E	7.87'
L33	S80°21'00"W	13.51'
L34	S71°28'36"W	17.02'
L35	N88°59'34"W	9.05'
L36	S46°36'13"W	4.70'
L37	S62°21'35"E	12.63'
L38	S12°29'37"E	5.85'
L39	S05°14'54"W	5.19'
L40	S53°39'50"W	6.40'
L41	S50°11'07"W	3.18'
L42	N68°32'27"W	12.59'
L43	N76°56'55"W	22.42'
L44	S11°48'26"W	21.74'
L45	S38°32'35"W	7.63'
L46	N02°47'36"W	49.45'

**POSSUM KINGDOM LAKE**

THE BRAZOS RIVER CONSERVATION AND RECLAMATION DISTRICT  
TRACT 158-3-22  
VOL. 180, PAGE 277  
D.R.S.C.T.

STANDARD LAND SURVEY  
OF  
0.3150 OF ONE ACRE  
SITUATED IN TRACT 158-3-22  
AREA 6-B, LOT W-18-3  
J. POITEVENT SURVEY  
ABSTRACT 142  
STEPHENS COUNTY, TEXAS

**AECOM**

AECOM USA GROUP, INC.  
1200 SUMMIT AVENUE, SUITE 600  
FORT WORTH, TEXAS 76102  
WWW.AECOM.COM  
817.698.6770