

VICINITY MAP
NOT TO SCALE

CURVE TABLE					
CURVE	LENGTH	DELTA	RADIUS	CHORD BEARING	CHORD
C1	32.32	74°04'49"	25.00	S88°10'13"W	30.12'
C2	28.82	66°02'50"	25.00	S18°06'24"W	27.25'

- LEGEND
- = LEASE CORNER MARKER
"AS NOTED"
 - OH = OVERHEAD POWER LINE
 - = POWER POLE

ACREAGE TABLE	
LEASE BLOCK:	2.1533 ACRES
F.E.R.C. BUFFER AREA:	0.4432 OF ONE ACRE
SURVEY BLOCK:	2.5965 ACRES TOTAL

NOTES:

- BEARINGS AND COORDINATES SHOWN HEREON ARE BASED ON THE NORTH AMERICAN DATUM OF 1983, TEXAS COORDINATE SYSTEM, NORTH CENTRAL ZONE (4202).
- 1,000-FOOT CONTOUR ELEVATION OF POSSUM KINGDOM LAKE IS DETERMINED BASED ON MEASUREMENTS FROM THE TOP OF THE EXISTING SPILLWAY CREST GATES AT THE MORRIS SHEPPARD DAM BEING AT ELEVATION 1,000- FEET ABOVE MEAN SEA LEVEL AS NOTED IN FEDERAL POWER COMMISSION REPORT PROJECT NO. 1490 - TEXAS ON JUNE 2, 1938.
- SET = 5/8" IRON ROD W/CAP STAMPED "AECOM" SET; D.R.P.P.C.T.= DEED RECORDS, PALO PINTO COUNTY, TEXAS; P.R.P.P.C.T.= PLAT RECORDS, PALO PINTO COUNTY, TEXAS; F.E.R.C.= FEDERAL ENERGY REGULATORY COMMISSION; J.R.P.P.C.T.= JUDGMENT RECORDS, PALO PINTO COUNTY, TEXAS.
- METES AND BOUNDS DESCRIPTIONS TO ACCOMPANY THIS SURVEY.
- LOCATION OF ROAD PROVIDED BY LINK FIELD SERVICES, DATED OCTOBER 29, 2009, AS SHOWN SHADED HEREON.

SURVEYORS CERTIFICATE

TO: BRAZOS RIVER AUTHORITY, PATTERSON PK LAND PARTNERSHIP, LTD., AND HERITAGE TITLE COMPANY OF AUSTIN, INC.

I, MUNIR ODHWANI, A REGISTERED PROFESSIONAL LAND SURVEYOR IN THE STATE OF TEXAS, REGISTRATION NUMBER 5996, HEREBY STATE THAT A SURVEY OF THE REAL PROPERTY DESCRIBED IN SEPARATE LEGAL DESCRIPTION AS NOTED HEREON, WAS ACTUALLY MADE UPON THE GROUND UNDER MY DIRECTION AND SUPERVISION, AND THAT TO THE BEST OF MY PROFESSIONAL KNOWLEDGE AND BELIEF, THE INFORMATION SHOWN HEREON IS CORRECT AS DETERMINED BY SAID SURVEY.

THIS SURVEY SUBSTANTIALLY COMPLIES WITH THE CURRENT TEXAS SOCIETY OF PROFESSIONAL SURVEYORS STANDARDS AND SPECIFICATIONS FOR A CATEGORY 1B, CONDITION II SURVEY.

Munir Odhwani

MUNIR ODHWANI
REGISTERED PROFESSIONAL LAND SURVEYOR
TEXAS REGISTRATION NO. 5996

DATE: FEBRUARY 19, 2010



LINE TABLE		
LINE	BEARING	DISTANCE
L1	N60°37'51"W	1.21'
L2	S07°23'42"W	36.41'
L3	N85°21'56"W	53.94'
L4	S11°03'47"E	64.76'
L5	S43°23'42"E	35.25'
L6	S85°54'38"E	18.34'
L7	N84°02'25"E	12.99'
L8	S27°51'03"E	21.31'
L9	S18°48'14"E	4.32'
L10	S14°29'42"W	32.74'
L11	S60°47'15"W	4.40'
L12	S59°33'06"W	16.71'
L13	S36°22'22"W	8.93'
L14	N54°47'22"W	23.95'
L15	S51°07'49"W	9.80'
L16	S14°55'01"E	30.99'
L17	S61°00'55"E	22.49'
L18	S03°03'16"E	16.31'
L19	S16°02'18"E	26.63'
L20	S02°40'39"W	44.65'
L21	S25°59'24"E	24.75'
L22	S01°37'22"W	18.45'
L23	S19°50'29"W	26.92'
L24	S22°10'01"W	27.80'
L25	S15°07'35"W	42.21'
L26	S09°16'10"W	40.16'
L27	S23°36'06"W	14.04'
L28	S32°02'22"W	23.38'
L29	S46°59'08"W	21.73'
L30	S26°41'13"E	44.77'
L31	N60°37'51"W	1.30'
L32	S07°23'42"W	14.20'
L33	S58°58'23"W	15.40'
L34	N85°21'56"W	32.69'
L35	S11°03'47"E	24.52'

LINE TABLE		
LINE	BEARING	DISTANCE
L36	S43°23'42"E	18.28'
L37	S85°54'38"E	6.41'
L38	N84°02'25"E	20.02'
L39	S83°48'37"E	8.59'
L40	S27°51'03"E	23.12'
L41	N53°07'48"E	2.50'
L42	S18°48'14"E	29.47'
L43	S14°29'42"W	50.90'
L44	S60°47'15"W	14.81'
L45	S59°33'06"W	11.32'
L46	S36°22'22"W	11.56'
L47	S52°40'54"W	1.64'
L48	S24°00'59"W	4.77'
L49	N72°48'36"W	13.83'
L50	S73°11'06"W	7.90'
L51	N54°47'22"W	31.22'
L52	S51°07'49"W	9.80'
L53	S14°55'01"E	20.36'
L54	N89°51'44"E	4.16'
L55	S54°24'30"E	13.54'
L56	S33°29'46"E	13.93'
L57	S03°03'16"E	20.27'
L58	S16°02'18"E	27.91'
L59	S02°40'39"W	42.39'
L60	S25°59'24"E	24.51'
L61	S01°37'22"W	28.60'
L62	S19°50'29"W	31.44'
L63	S22°10'01"W	26.77'
L64	S15°07'35"W	39.39'
L65	S09°16'10"W	42.03'
L66	S23°36'06"W	19.03'
L67	S32°02'22"W	28.50'
L68	S46°59'08"W	23.10'
L69	N47°24'07"W	25.07'

STANDARD LAND SURVEY
OF
2.5965 ACRES
SITUATED IN TRACT 12-2-47
AREA 4, LOTS N-1 - N-4
POSSUM KINGDOM LAKE
HEIRS OF HENRY MIERS
ORIGINAL SURVEY NO. 95
ABSTRACT 318
PALO PINTO COUNTY, TEXAS

AECOM

AECOM USA GROUP, INC.
1200 SUMMIT AVENUE, SUITE 600
FORT WORTH, TEXAS 76102
WWW.AECOM.COM
817.698.6770

THE BRAZOS RIVER CONSERVATION
AND RECLAMATION DISTRICT
FIRST TRACT
TRACT 12-2-47
CALLED 120 ACRES
VOL. 182, PG. 174
D.R.P.P.C.T.

HEIRS OF HENRY MIERS
ORIGINAL SURVEY NO. 95
ABSTRACT 318

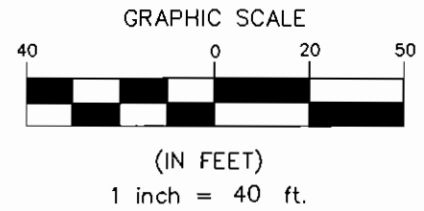
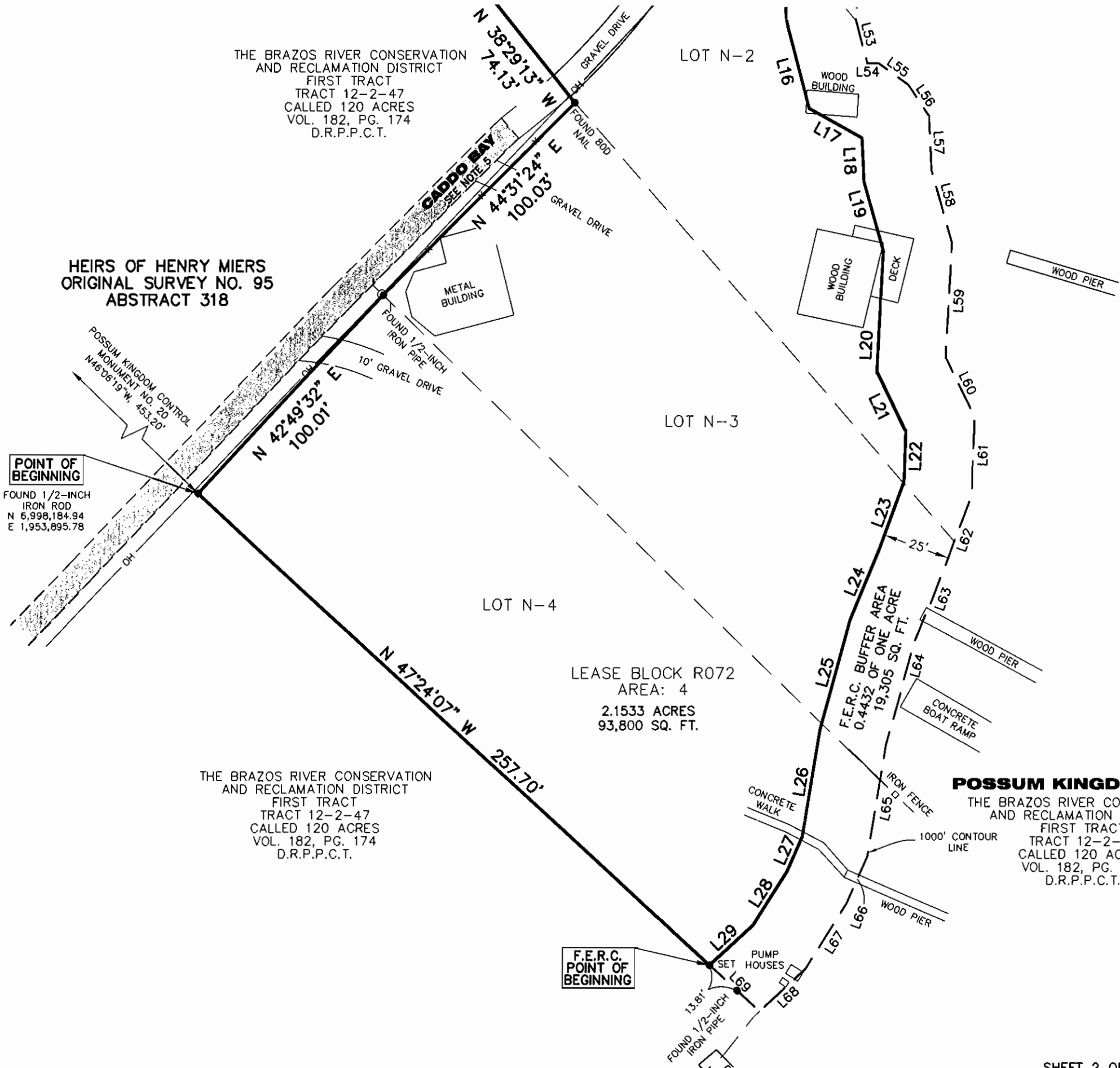
POINT OF BEGINNING
FOUND 1/2-INCH
IRON ROD
N 6,998,184.94
E 1,953,895.78

POSSUM KINGDOM CONTROL
MONUMENT NO. 20
N46°08'19"W. 453.20'

THE BRAZOS RIVER CONSERVATION
AND RECLAMATION DISTRICT
FIRST TRACT
TRACT 12-2-47
CALLED 120 ACRES
VOL. 182, PG. 174
D.R.P.P.C.T.

LEASE BLOCK R072
AREA: 4
2.1533 ACRES
93,800 SQ. FT.

**F.E.R.C.
POINT OF BEGINNING**



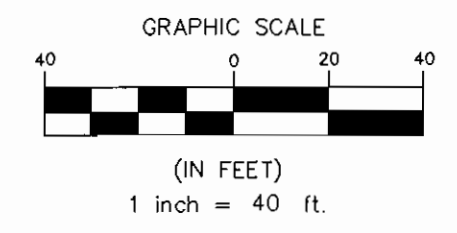
STANDARD LAND SURVEY
OF
2.5965 ACRES
SITUATED IN TRACT 12-2-47
AREA 4, LOTS N-1 - N-4
POSSUM KINGDOM LAKE
HEIRS OF HENRY MIERS
ORIGINAL SURVEY NO. 95
ABSTRACT 318
PALO PINTO COUNTY, TEXAS

POSSUM KINGDOM LAKE
THE BRAZOS RIVER CONSERVATION
AND RECLAMATION DISTRICT
FIRST TRACT
TRACT 12-2-47
CALLED 120 ACRES
VOL. 182, PG. 174
D.R.P.P.C.T.

AECOM	AECOM USA GROUP, INC. 1200 SUMMIT AVENUE, SUITE 600 FORT WORTH, TEXAS 76102 WWW.AECOM.COM 817.698.6770	
	Date: 12/03/09	Project No. 60052528.103
		60052528 R072By.dwg

NO PART OR PARTS OF THIS DRAWING MAY BE REPRODUCED OR RETRANSMITTED IN ANY WAY OR FORM (ELECTRONIC, MECHANICAL, PHOTOCOPYING, OR OTHERWISE) WITHOUT THE EXPRESS WRITTEN PERMISSION OF AECOM.

J:\60052528 Possum Kingdom Lake\02.01 Assimilation of Data\Group 10\R072 DRAWING\60052528 R072By.dwg 12/7/2009 7:41:37 AM CST



THE BRAZOS RIVER CONSERVATION
AND RECLAMATION DISTRICT
FIRST TRACT
TRACT 12-2-47
CALLED 120 ACRES
VOL. 182, PG. 174
D.R.P.P.C.T.

HEIRS OF HENRY MIERS
ORIGINAL SURVEY NO. 95
ABSTRACT 318

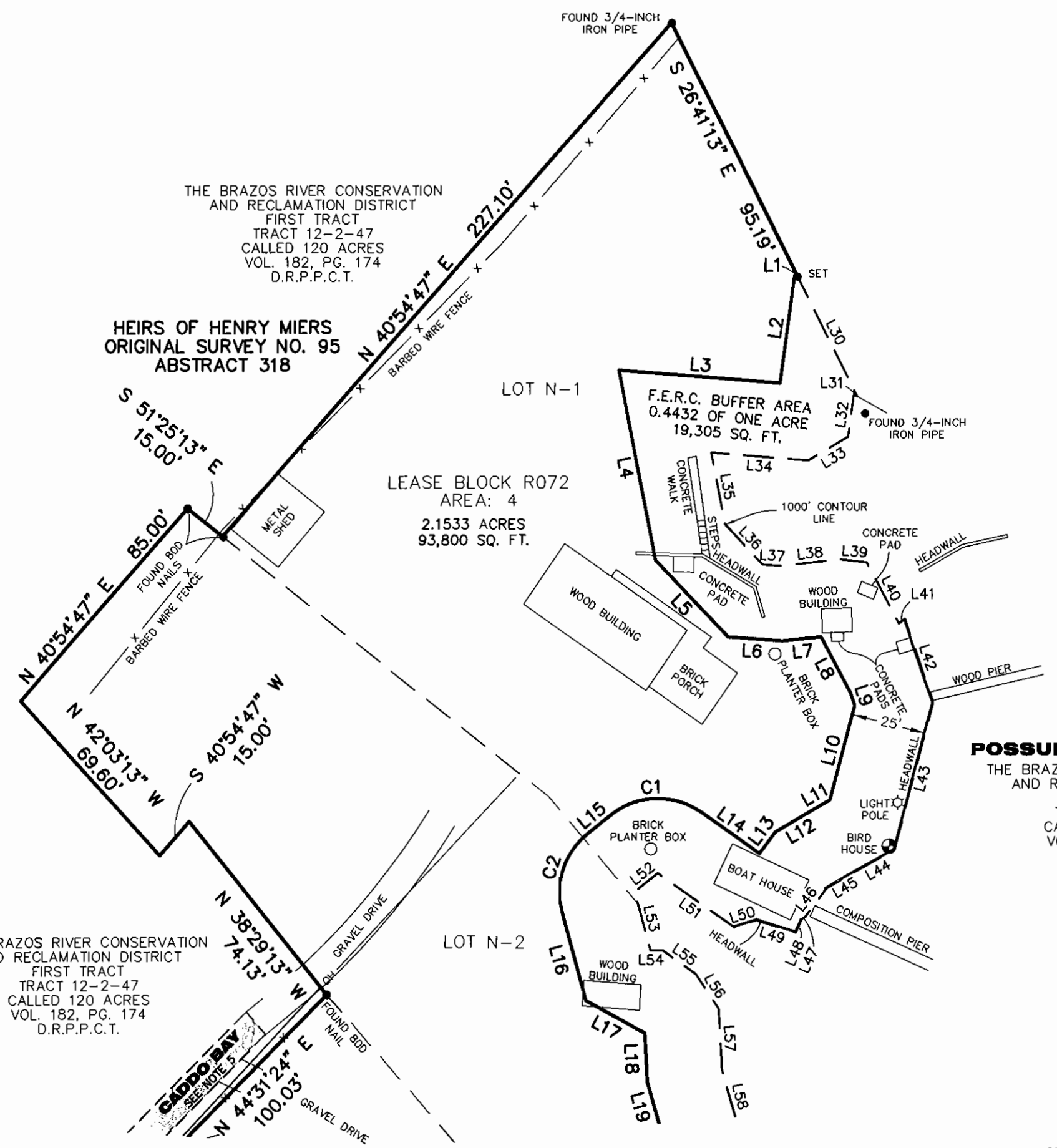
THE BRAZOS RIVER CONSERVATION
AND RECLAMATION DISTRICT
FIRST TRACT
TRACT 12-2-47
CALLED 120 ACRES
VOL. 182, PG. 174
D.R.P.P.C.T.

LEASE BLOCK R072
AREA: 4
2.1533 ACRES
93,800 SQ. FT.

F.E.R.C. BUFFER AREA
0.4432 OF ONE ACRE
19,305 SQ. FT.

POSSUM KINGDOM LAKE
THE BRAZOS RIVER CONSERVATION
AND RECLAMATION DISTRICT
FIRST TRACT
TRACT 12-2-47
CALLED 120 ACRES
VOL. 182, PG. 174
D.R.P.P.C.T.

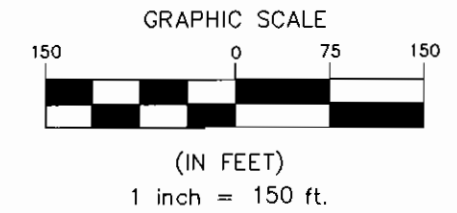
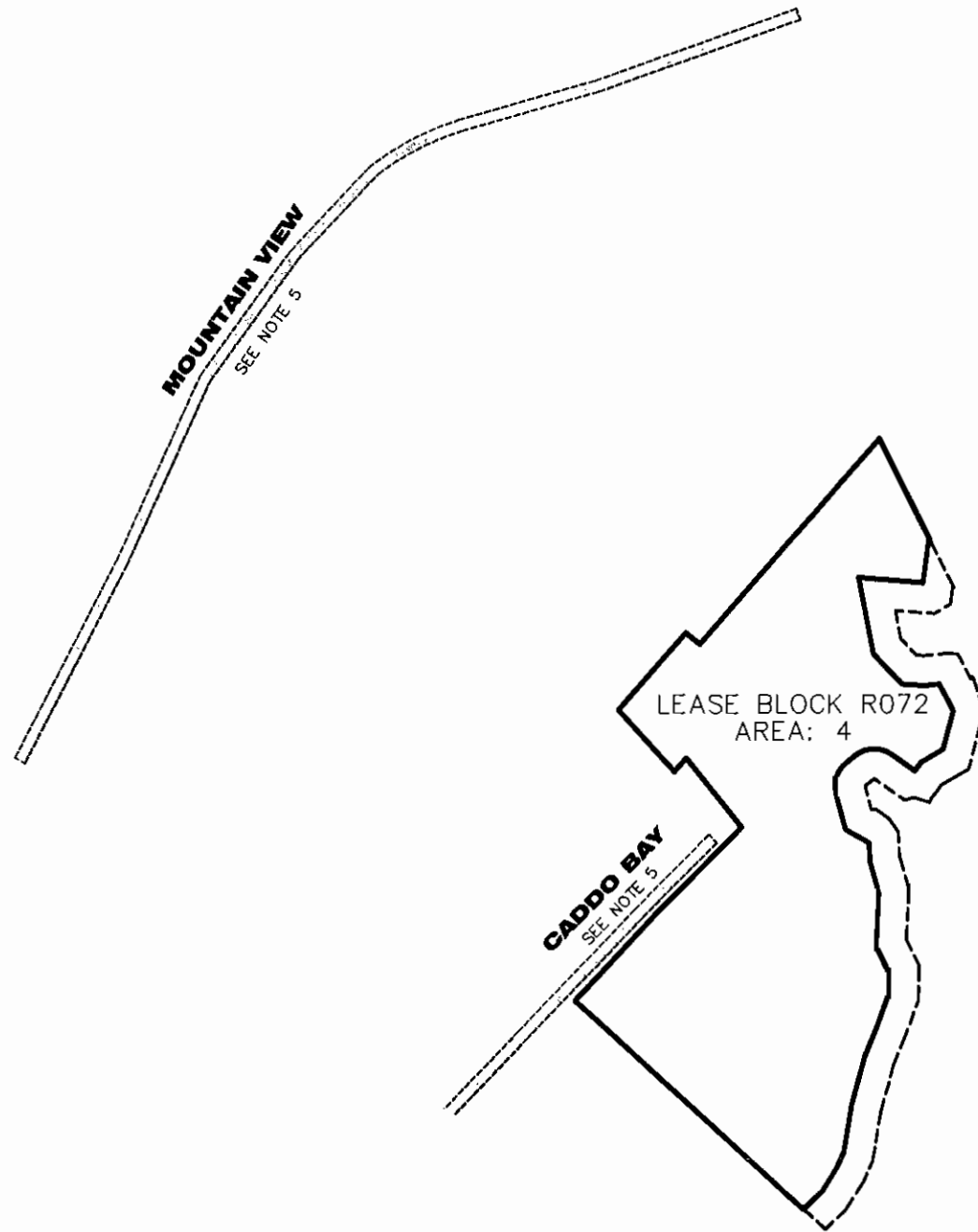
STANDARD LAND SURVEY
OF
2.5965 ACRES
SITUATED IN TRACT 12-2-47
AREA 4, LOTS N-1 - N-4
POSSUM KINGDOM LAKE
HEIRS OF HENRY MIERS
ORIGINAL SURVEY NO. 95
ABSTRACT 318
PALO PINTO COUNTY, TEXAS



AECOM	AECOM USA GROUP, INC. 1200 SUMMIT AVENUE, SUITE 600 FORT WORTH, TEXAS 76102 WWW.AECOM.COM 817.698.6770	
	Date: 12/03/09	Project No. 60052528.103

NO PART OR PARTS OF THIS DRAWING MAY BE REPRODUCED OR TRANSMITTED IN ANY WAY OR FORM (ELECTRONIC, MECHANICAL, PHOTOCOPYING, OR OTHERWISE) WITHOUT THE EXPRESS WRITTEN PERMISSION OF AECOM.

J:\60052528\Possum Kingdom Lake\102.01 Assimilation of Data\Group 10\R072\DRAWING\60052528 R072By.dwg 12/7/2009 7:41:37 AM CST



STANDARD LAND SURVEY
OF
2.5965 ACRES
SITUATED IN TRACT 12-2-47
AREA 4, LOTS N-1 - N-4
POSSUM KINGDOM LAKE
HEIRS OF HENRY MIERS
ORIGINAL SURVEY NO. 95
ABSTRACT 318
PALO PINTO COUNTY, TEXAS

AECOM

AECOM USA GROUP, INC.
1200 SUMMIT AVENUE, SUITE 600
FORT WORTH, TEXAS 76102
WWW.AECOM.COM
817.698.6770

SHEET 4 OF 4

Date: 12/03/09 Project No. 60052528.103

60052528
R072By.dwg