

VICINITY MAP
NOT TO SCALE

NOTES:

- 1) BEARINGS AND COORDINATES SHOWN HEREON ARE BASED ON THE NORTH AMERICAN DATUM OF 1983, TEXAS COORDINATE SYSTEM, NORTH CENTRAL ZONE (4202).
- 2) 1,000-FOOT CONTOUR ELEVATION OF POSSUM KINGDOM LAKE IS DETERMINED BASED ON MEASUREMENTS FROM THE TOP OF THE EXISTING SPILLWAY CREST GATES AT THE MORRIS SHEPPARD DAM BEING AT ELEVATION 1,000- FEET ABOVE MEAN SEA LEVEL AS NOTED IN FEDERAL POWER COMMISSION REPORT PROJECT NO. 1490 - TEXAS ON JUNE 2, 1938.
- 3) SET = 5/8" IRON ROD W/CAP STAMPED "AECOM" SET; D.R.P.C.T.= DEED RECORDS, PALO PINTO COUNTY, TEXAS; P.R.P.C.T.= PLAT RECORDS, PALO PINTO COUNTY, TEXAS; F.E.R.C.= FEDERAL ENERGY REGULATORY COMMISSION; J.R.P.C.T.= JUDGEMENT RECORDS, PALO PINTO COUNTY, TEXAS.
- 4) METES AND BOUNDS DESCRIPTIONS TO ACCOMPANY THIS SURVEY.
- 5) LOCATION OF ROAD PROVIDED BY LINK FIELD SERVICES, DATED OCTOBER 28, 2009, AS SHOWN SHADED HEREON.

SURVEYORS CERTIFICATE

TO: BRAZOS RIVER AUTHORITY, PATTERSON PK LAND PARTNERSHIP, LTD., AND HERITAGE TITLE COMPANY OF AUSTIN, INC.

I, MUNIR ODHWANI, A REGISTERED PROFESSIONAL LAND SURVEYOR IN THE STATE OF TEXAS, REGISTRATION NUMBER 4522, HEREBY STATE THAT A SURVEY OF THE REAL PROPERTY DESCRIBED IN SEPARATE LEGAL DESCRIPTION AS NOTED HEREON, WAS ACTUALLY MADE UPON THE GROUND UNDER MY DIRECTION AND SUPERVISION, AND THAT TO THE BEST OF MY PROFESSIONAL KNOWLEDGE AND BELIEF, THE INFORMATION SHOWN HEREON IS CORRECT AS DETERMINED BY SAID SURVEY.

THIS SURVEY SUBSTANTIALLY COMPLIES WITH THE CURRENT TEXAS SOCIETY OF PROFESSIONAL SURVEYORS STANDARDS AND SPECIFICATIONS FOR A CATEGORY 1B, CONDITION II SURVEY.

MUNIR ODHWANI
REGISTERED PROFESSIONAL LAND SURVEYOR
TEXAS REGISTRATION NO. 5996

DATE: FEBRUARY 12, 2010



LINE TABLE		
LINE	BEARING	DISTANCE
L1	N29°33'23"W	100.20'
L2	S33°50'04"E	46.15'
L3	S53°39'35"E	13.39'
L4	S46°18'18"E	12.33'
L5	S34°06'09"E	5.59'
L6	S12°51'53"E	18.90'
L7	S05°08'42"W	34.41'
L8	S16°31'29"E	32.67'
L9	S39°36'04"E	23.11'
L10	S52°51'24"E	22.79'
L11	S65°37'00"E	16.68'
L12	S87°07'44"E	25.57'
L13	S37°34'37"E	18.76'
L14	S17°15'29"E	31.24'
L15	S14°41'56"W	7.76'
L16	S11°23'20"E	39.32'
L17	S17°22'16"E	19.10'
L18	S39°34'33"E	23.59'
L19	S08°07'11"E	0.10'
L20	S09°11'21"W	15.01'
L21	S07°07'07"E	18.21'
L22	S38°54'14"W	28.78'
L23	S26°06'10"W	22.91'
L24	S07°58'07"W	15.08'
L25	N83°25'23"W	25.46'
L26	S59°26'58"W	18.98'
L27	S62°31'19"E	30.32'
L28	S66°16'21"E	36.85'
L29	N82°25'30"E	27.13'
L30	S75°30'05"E	3.73'
L31	S51°07'45"E	5.73'
L32	S46°33'25"E	13.49'
L33	S19°01'27"E	6.96'
L34	S15°08'54"E	31.18'
L35	S54°17'43"E	4.09'
L36	S03°56'52"E	18.75'
L37	S08°03'14"E	23.17'
L38	S12°22'22"E	23.07'
L39	S08°25'27"E	21.67'
L40	S05°51'03"E	24.21'
L41	S14°51'48"E	25.08'
L42	S09°59'08"E	19.27'
L43	S06°01'53"E	42.31'
L44	S04°20'12"E	17.92'
L45	S77°40'23"W	11.17'
L46	S71°58'21"W	13.30'
L47	S50°09'35"E	39.96'
L48	S79°26'01"E	12.79'
L49	S07°10'00"E	15.99'
L50	S24°27'26"W	7.01'
L51	S00°56'46"E	21.53'
L52	S08°11'08"E	5.79'
L53	S02°00'34"E	15.04'
L54	S14°05'48"E	15.49'
L55	S19°06'33"E	16.11'
L56	S36°18'28"E	24.51'
L57	S28°43'50"E	20.18'
L58	S04°29'21"E	6.85'
L59	S26°22'31"E	40.55'
L60	S10°43'53"E	22.79'
L61	S14°12'08"E	54.41'
L62	S81°21'21"W	13.08'
L63	S02°00'09"W	39.43'
L64	S08°50'35"E	37.86'
L65	S74°25'16"E	13.60'
L66	S06°15'30"E	27.79'

LINE TABLE		
LINE	BEARING	DISTANCE
L67	S70°00'48"W	3.11'
L68	S38°03'00"W	23.17'
L69	S00°04'06"W	25.82'
L70	S13°35'42"E	46.28'
L71	S12°07'56"E	33.42'
L72	S01°45'46"W	7.49'
L73	S09°01'10"W	12.25'
L74	S14°47'52"W	21.25'
L75	S29°17'00"W	16.92'
L76	S39°06'13"W	24.18'
L77	S18°48'19"W	23.81'
L78	S34°19'45"W	49.27'
L79	S02°28'02"E	2.97'
L80	S88°50'14"E	30.52'
L81	S33°50'04"E	24.28'
L82	S53°39'35"E	10.62'
L83	S46°18'18"E	16.61'
L84	S34°06'09"E	16.23'
L85	S01°16'18"W	7.41'
L86	N89°30'15"E	18.99'
L87	S12°51'53"E	62.43'
L88	S82°45'54"W	6.19'
L89	S05°08'42"W	13.66'
L90	S16°31'29"E	22.79'
L91	S39°36'04"E	15.10'
L92	S52°51'24"E	17.09'
L93	S65°37'00"E	9.14'
L94	S87°07'44"E	25.31'
L95	S66°59'19"E	10.92'
L96	S37°34'37"E	29.83'
L97	S17°15'29"E	42.88'
L98	S14°41'56"W	9.12'
L99	S11°23'20"E	32.22'
L100	S17°22'16"E	12.89'
L101	S39°34'33"E	25.72'
L102	S08°07'11"E	10.95'
L103	S09°11'21"W	15.24'
L104	S07°07'07"E	25.24'
L105	S38°54'14"W	36.59'
L106	S26°06'10"W	33.64'
L107	N81°25'28"W	5.36'
L108	S07°58'07"W	33.82'
L109	S80°34'08"W	20.52'
L110	N83°25'23"W	21.87'
L111	S59°26'58"W	10.58'
L112	S62°31'19"E	29.50'
L113	S66°16'21"E	29.02'
L114	N82°25'30"E	25.00'
L115	S75°30'05"E	14.00'
L116	S51°07'45"E	12.13'
L117	S46°33'25"E	20.61'
L118	S19°01'27"E	13.93'
L119	S15°08'54"E	23.13'
L120	S54°17'43"E	4.23'
L121	S82°39'08"E	9.48'
L122	S34°01'04"E	5.04'
L123	S25°02'45"W	4.66'
L124	S68°25'35"W	7.84'
L125	S03°56'52"E	18.67'
L126	S08°03'14"E	21.33'
L127	S12°22'22"E	22.99'
L128	S08°25'27"E	23.09'
L129	S05°51'03"E	22.80'
L130	S14°51'48"E	24.18'
L131	S09°59'08"E	21.19'
L132	S06°34'47"E	20.24'

LINE TABLE		
LINE	BEARING	DISTANCE
L133	S27°32'22"E	13.83'
L134	S12°16'10"E	7.91'
L135	S61°10'00"W	6.64'
L136	S04°20'12"E	16.81'
L137	S49°21'15"E	7.95'
L138	S05°06'16"W	6.23'
L139	S04°43'42"E	11.77'
L140	S81°10'53"W	15.75'
L141	S77°40'23"W	20.54'
L142	S71°58'21"W	12.05'
L143	S50°09'35"E	33.43'
L144	S79°26'01"E	6.49'
L145	S07°10'00"E	34.67'
L146	S72°13'59"W	1.61'
L147	S00°56'46"E	15.89'
L148	N81°57'29"E	12.51'
L149	S08°11'08"E	40.64'
L150	S47°53'56"W	11.35'
L151	S12°52'33"E	9.55'
L152	S28°46'51"W	3.52'
L153	S14°05'48"E	11.75'
L154	S19°06'33"E	11.24'
L155	S36°18'28"E	22.39'
L156	S28°43'50"E	27.21'
L157	S04°29'21"E	7.38'
L158	N75°05'24"E	10.12'
L159	S11°25'37"E	38.44'
L160	S10°43'53"E	25.42'
L161	N82°19'50"E	2.94'
L162	S11°06'31"E	50.20'
L163	S38°42'56"E	3.69'
L164	N86°18'53"E	0.59'
L165	S10°19'07"E	4.11'
L166	S10°33'59"W	24.69'
L167	S81°21'21"W	11.55'
L168	S02°00'09"W	16.32'
L169	S08°50'35"E	19.38'
L170	S74°25'16"E	14.41'
L171	S06°15'30"E	64.33'
L172	S70°00'48"W	15.58'
L173	S38°03'00"W	7.41'
L174	S00°04'06"W	14.23'
L175	S13°35'42"E	43.61'
L176	S12°07'56"E	36.78'
L177	S01°45'46"W	12.12'
L178	S09°01'10"W	15.10'
L179	S14°47'52"W	25.69'
L180	S29°17'00"W	22.25'
L181	S39°06'13"W	21.85'
L182	S18°48'19"W	22.74'
L183	S34°19'45"W	31.28'
L184	S78°40'11"W	33.23'

CURVE TABLE					
CURVE	LENGTH	DELTA	RADIUS	CHORD BEARING	CHORD
C1	38.25'	87°40'25"	25.00'	S44°01'46"E	34.63'
C2	24.19'	55°26'40"	25.00'	S35°41'27"W	23.26'
C3	53.22'	121°58'16"	25.00'	S01°32'10"E	43.72'
C4	53.29'	122°07'56"	25.00'	S10°54'23"W	43.76'
C5	29.35'	67°16'14"	25.00'	S34°34'52"E	27.70'
C6	19.76'	45°16'31"	25.00'	S20°37'41"W	19.25'
C7	14.04'	14°14'31"	56.50'	S72°18'46"E	14.01'
C8	7.88'	45°13'03"	9.99'	S42°34'58"E	7.68'
C9	7.67'	44°56'30"	9.78'	S15°18'15"W	7.48'

ACREAGE TABLE	
LEASE BLOCK:	8.0902 ACRES
F.E.R.C. BUFFER AREA:	1.1106 ACRES
SURVEY BLOCK:	9.2008 ACRES TOTAL

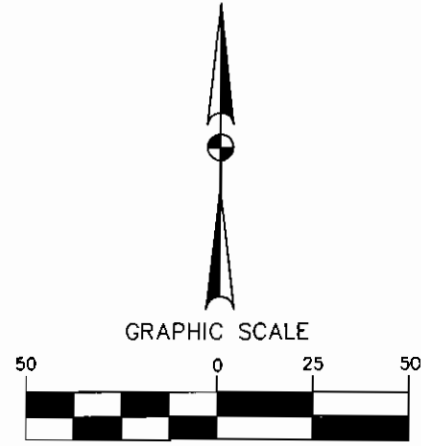
STANDARD LAND SURVEY
OF
9.2008 ACRES
SITUATED IN TRACT 11-2-46 & 19A-3-3
AREA 4, LOTS N-13 - N-27
POSSUM KINGDOM LAKE
D. & S.E. RR CO. ORIGINAL SURVEY No. 1
ABSTRACT 1243
A. SIDNEY JOHNSTON ORIGINAL SURVEY No. 96,
ABSTRACT 262
PALO PINTO COUNTY, TEXAS

AECOM	AECOM USA GROUP, INC. 1200 SUMMIT AVENUE, SUITE 600 FORT WORTH, TEXAS 76102 WWW.AECOM.COM 817.698.6770
	Date: 12/24/09 Project No. 60052528.103 60052528 R070By.dwg

D. & S.E. RR CO. ORIGINAL SURVEY No. 1,
ABSTRACT 1243

POSSUM KINGDOM LAKE

THE BRAZOS RIVER CONSERVATION
AND RECLAMATION DISTRICT
TRACT 19A-3-3
VOLUME 182, PAGE 244
D.R.P.P.C.T.

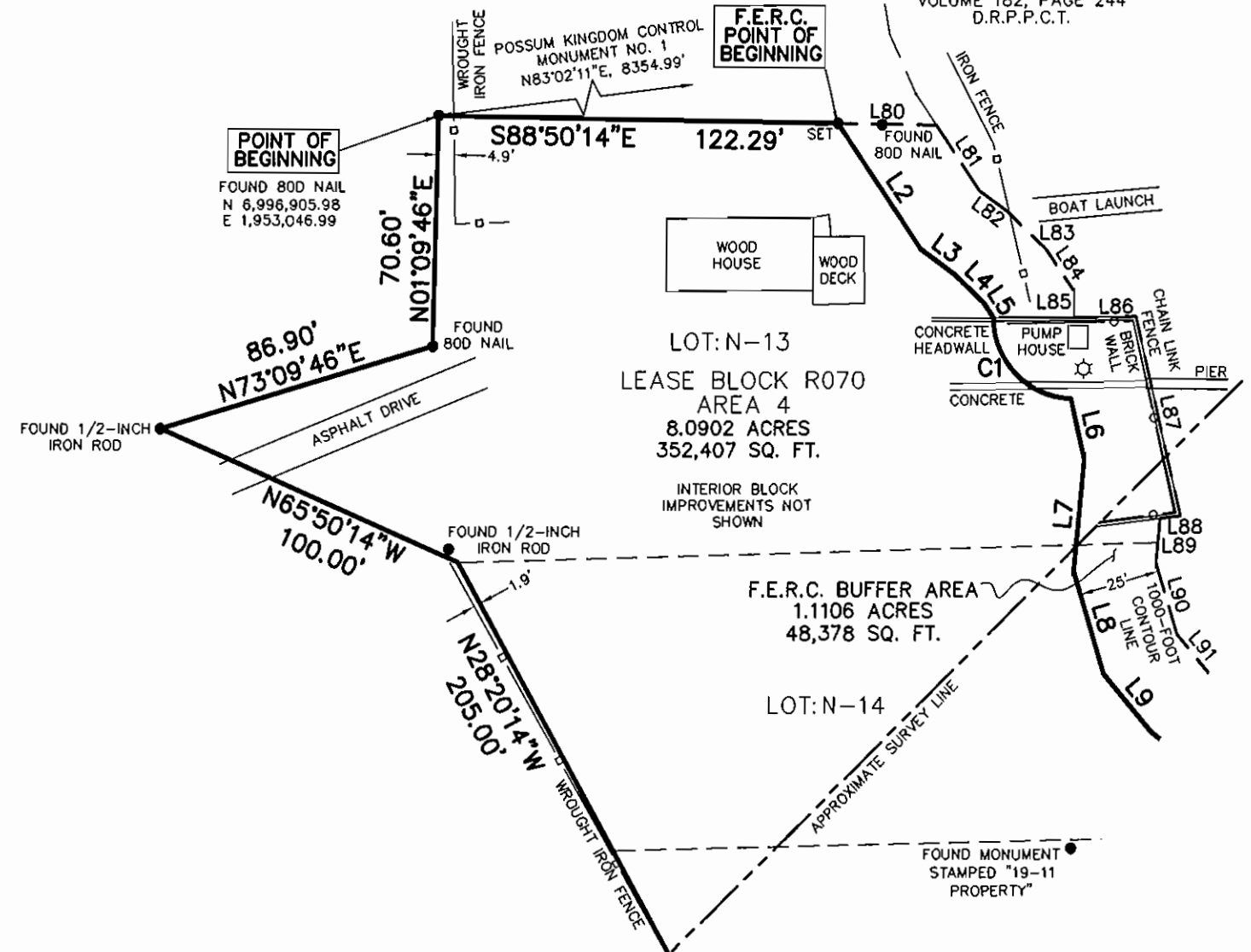


(IN FEET)
1 inch = 50 ft.

LEGEND

- = LEASE CORNER MARKER "AS NOTED"
- ⊙ = WATER METER
- ⊛ = LIGHT
- ⊚ = FLAG POLE
- ⊜ = OVERHEAD LINES
- ⊝ = POWER POLE

THE BRAZOS RIVER CONSERVATION
AND RECLAMATION DISTRICT
TRACT 19A-3-3
VOLUME 182, PAGE 244
D.R.P.P.C.T.



STANDARD LAND SURVEY
OF
9.2008 ACRES

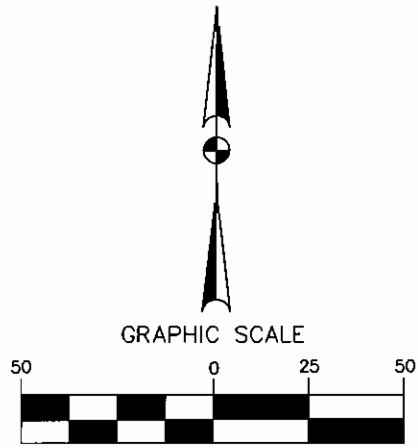
SITUATED IN TRACT 11-2-46 & 19A-3-3
AREA 4, LOTS N-13 - N-27
POSSUM KINGDOM LAKE
D. & S.E. RR CO. ORIGINAL SURVEY No. 1
ABSTRACT 1243
A. SIDNEY JOHNSTON ORIGINAL SURVEY No. 96,
ABSTRACT 262
PALO PINTO COUNTY, TEXAS

AECOM	AECOM USA GROUP, INC. 1200 SUMMIT AVENUE, SUITE 600 FORT WORTH, TEXAS 76102 WWW.AECOM.COM 817.698.6770	
	Date: 12/24/09	Project No. 60052528.103

NO PART OR PARTS OF THIS DRAWING MAY BE REPRODUCED OR RETRANSMITTED IN ANY WAY OR FORM (ELECTRONIC, MECHANICAL, PHOTOCOPYING, OR OTHERWISE) WITHOUT THE EXPRESS WRITTEN PERMISSION OF AECOM.

S:\Surveyor\Projects\60052528\3.0 Ref Docs\Drafting\Blocks\R070\60052528 R070By.dwg 2/3/2010 7:23:07 AM CST

D. & S.E. RR CO. ORIGINAL SURVEY No. 1,
ABSTRACT 1243



(IN FEET)
1 inch = 50 ft.

THE BRAZOS RIVER CONSERVATION
AND RECLAMATION DISTRICT
TRACT 19A-3-3
VOLUME 182, PAGE 244
D.R.P.P.C.T.

LEGEND

- = LEASE CORNER MARKER "AS NOTED"
- ⊙ = WATER METER
- ⊙ = LIGHT
- ⊙ = FLAG POLE
- OH = OVERHEAD LINES
- ⊙ = POWER POLE

POSSUM KINGDOM LAKE

THE BRAZOS RIVER CONSERVATION
AND RECLAMATION DISTRICT
TRACT 11-2-46
VOLUME 182, PAGE 339
D.R.P.P.C.T.

F.E.R.C. BUFFER AREA
1.1106 ACRES
48,378 SQ. FT.

LOT: N-15
LEASE BLOCK R070
AREA 4
8.0902 ACRES
352,407 SQ. FT.

INTERIOR BLOCK
IMPROVEMENTS NOT
SHOWN

STANDARD LAND SURVEY
OF
9.2008 ACRES

SITUATED IN TRACT 11-2-46 & 19A-3-3
AREA 4, LOTS N-13 - N-27
POSSUM KINGDOM LAKE
D. & S.E. RR CO. ORIGINAL SURVEY No. 1
ABSTRACT 1243

A. SIDNEY JOHNSTON ORIGINAL SURVEY No. 96,
ABSTRACT 262
PALO PINTO COUNTY, TEXAS

THE BRAZOS RIVER CONSERVATION
AND RECLAMATION DISTRICT
TRACT 11-2-46
VOLUME 182, PAGE 339
D.R.P.P.C.T.

A. SIDNEY JOHNSTON ORIGINAL
SURVEY No. 96, ABSTRACT 262

AECOM	AECOM USA GROUP, INC. 1200 SUMMIT AVENUE, SUITE 600 FORT WORTH, TEXAS 76102 WWW.AECOM.COM 817.698.6770
	60052528 R070By.dwg

SHEET 3 OF 7

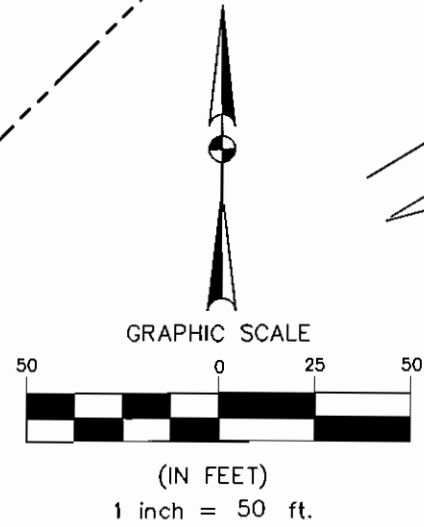
Date: 12/24/09 Project No. 60052528.103

A. SIDNEY JOHNSTON ORIGINAL SURVEY No. 96, ABSTRACT 262

POSSUM KINGDOM LAKE

THE BRAZOS RIVER CONSERVATION AND RECLAMATION DISTRICT
TRACT 11-2-46
VOLUME 182, PAGE 339
D.R.P.P.C.T.

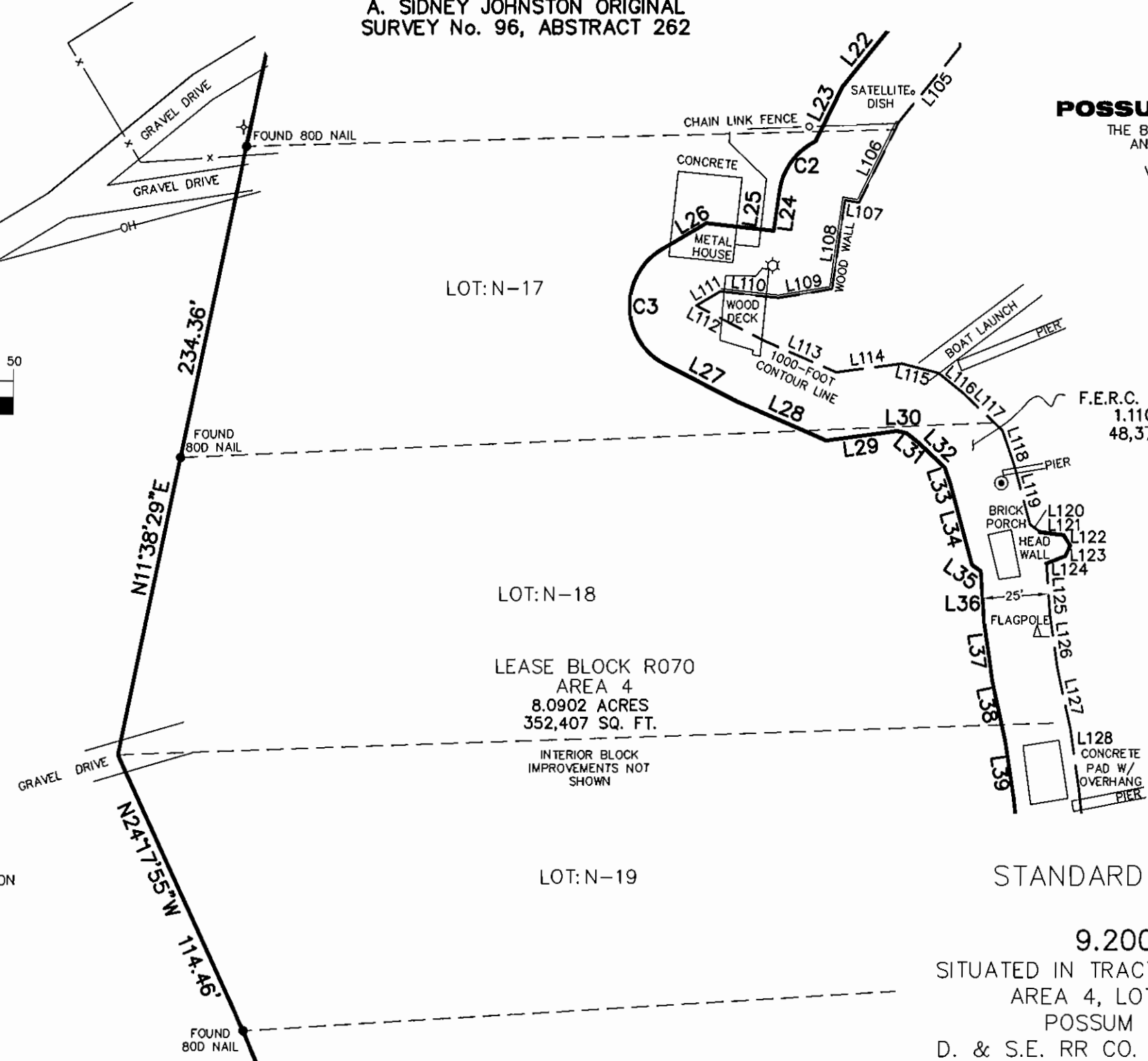
THE BRAZOS RIVER CONSERVATION AND RECLAMATION DISTRICT
TRACT 19A-3-3
VOLUME 182, PAGE 244
D.R.P.P.C.T.



TIMBERLINE

HARBOR VIEW
SEE NOTE 5

THE BRAZOS RIVER CONSERVATION AND RECLAMATION DISTRICT
TRACT 11-2-46
VOLUME 182, PAGE 339
D.R.P.P.C.T.



F.E.R.C. BUFFER AREA
1.1106 ACRES
48,378 SQ. FT.

LEASE BLOCK R070
AREA 4
8.0902 ACRES
352,407 SQ. FT.

- LEGEND**
- = LEASE CORNER MARKER "AS NOTED"
 - ⊙ = WATER METER
 - ⊛ = LIGHT
 - ▽ = FLAG POLE
 - OH = OVERHEAD LINES
 - ⊕ = POWER POLE

STANDARD LAND SURVEY
OF
9.2008 ACRES
SITUATED IN TRACT 11-2-46 & 19A-3-3
AREA 4, LOTS N-13 - N-27
POSSUM KINGDOM LAKE
D. & S.E. RR CO. ORIGINAL SURVEY No. 1
ABSTRACT 1243
A. SIDNEY JOHNSTON ORIGINAL SURVEY No. 96,
ABSTRACT 262
PALO PINTO COUNTY, TEXAS

AECOM	AECOM USA GROUP, INC. 1200 SUMMIT AVENUE, SUITE 600 FORT WORTH, TEXAS 76102 WWW.AECOM.COM 817.698.6770	
	Date: 12/24/09	Project No. 60052528.103

NO PART OR PARTS OF THIS DRAWING MAY BE REPRODUCED OR RETRANSMITTED IN ANY WAY OR FORM (ELECTRONIC, MECHANICAL, PHOTOCOPYING, OR OTHERWISE) WITHOUT THE EXPRESS WRITTEN PERMISSION OF AECOM.

S:\Survcom\Projects\60052528\3.0 Ref Docs\Drafting\Blocks\R070\60052528 R070By.dwg 2/3/2010 7:23:07 AM CST

A. SIDNEY JOHNSTON ORIGINAL SURVEY No. 96, ABSTRACT 262

F.E.R.C. BUFFER AREA
1.1106 ACRES
48,378 SQ. FT.

POSSUM KINGDOM LAKE

THE BRAZOS RIVER CONSERVATION AND RECLAMATION DISTRICT
TRACT 11-2-46
VOLUME 182, PAGE 339
D.R.P.P.C.T.

STANDARD LAND SURVEY OF

9.2008 ACRES

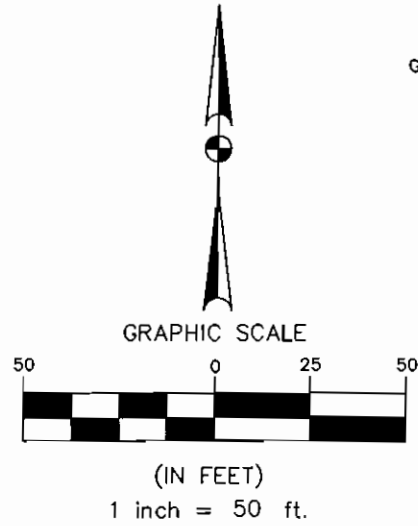
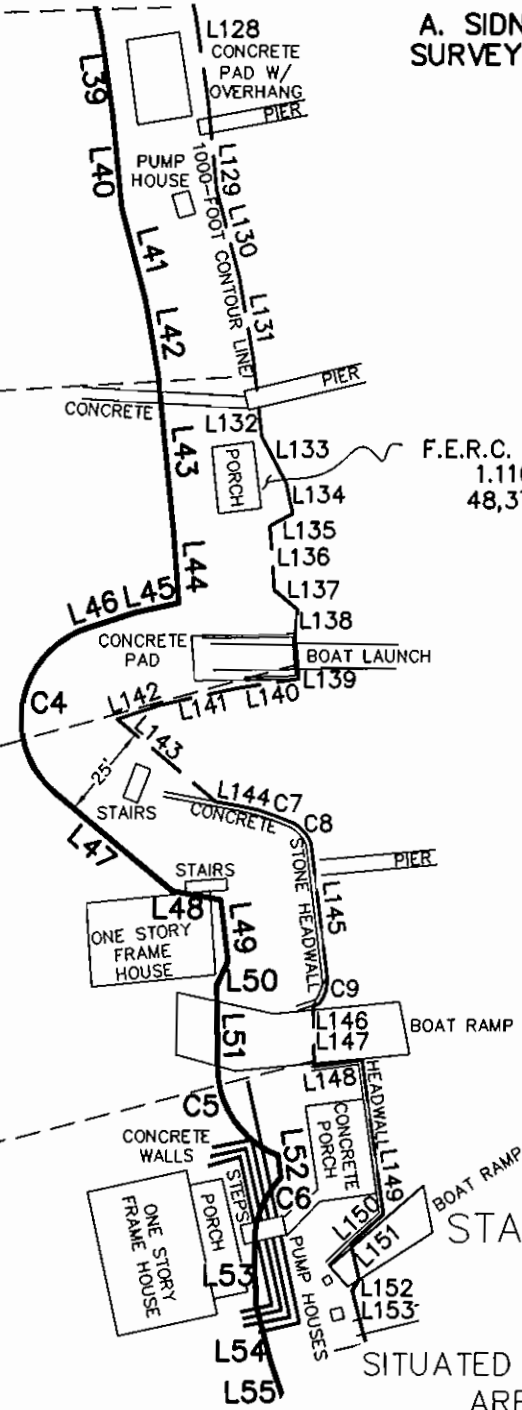
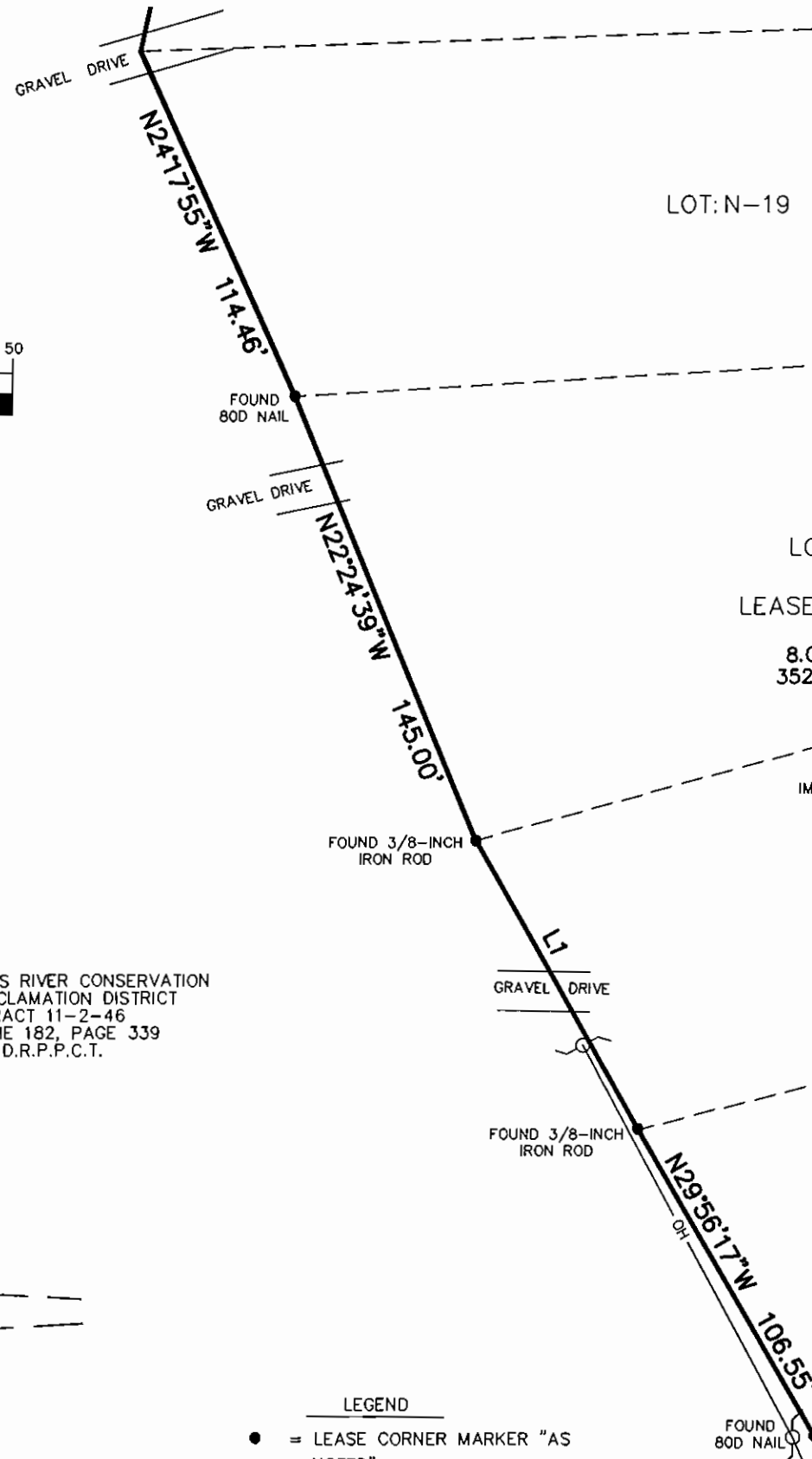
SITUATED IN TRACT 11-2-46 & 19A-3-3
AREA 4, LOTS N-13 - N-27

POSSUM KINGDOM LAKE

D. & S.E. RR CO. ORIGINAL SURVEY No. 1
ABSTRACT 1243

A. SIDNEY JOHNSTON ORIGINAL SURVEY No. 96,
ABSTRACT 262

PALO PINTO COUNTY, TEXAS



THE BRAZOS RIVER CONSERVATION AND RECLAMATION DISTRICT
TRACT 11-2-46
VOLUME 182, PAGE 339
D.R.P.P.C.T.

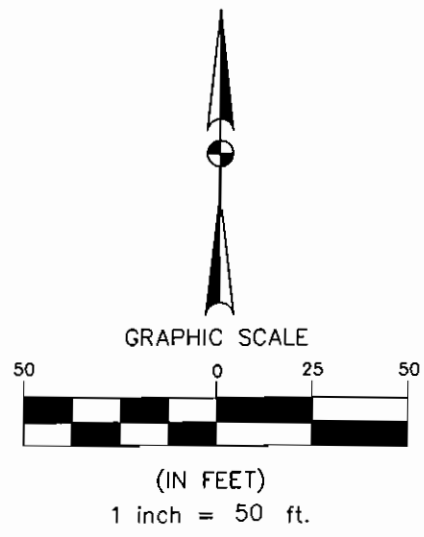
HARBOR VIEW
SEE NOTE 5

- LEGEND**
- = LEASE CORNER MARKER "AS NOTED"
 - ⊙ = WATER METER
 - ☆ = LIGHT
 - △ = FLAG POLE
 - OH = OVERHEAD LINES
 - ⊕ = POWER POLE

AECOM	AECOM USA GROUP, INC. 1200 SUMMIT AVENUE, SUITE 600 FORT WORTH, TEXAS 76102 WWW.AECOM.COM 817.698.6770	
	Date: 12/24/09	Project No. 60052528.103

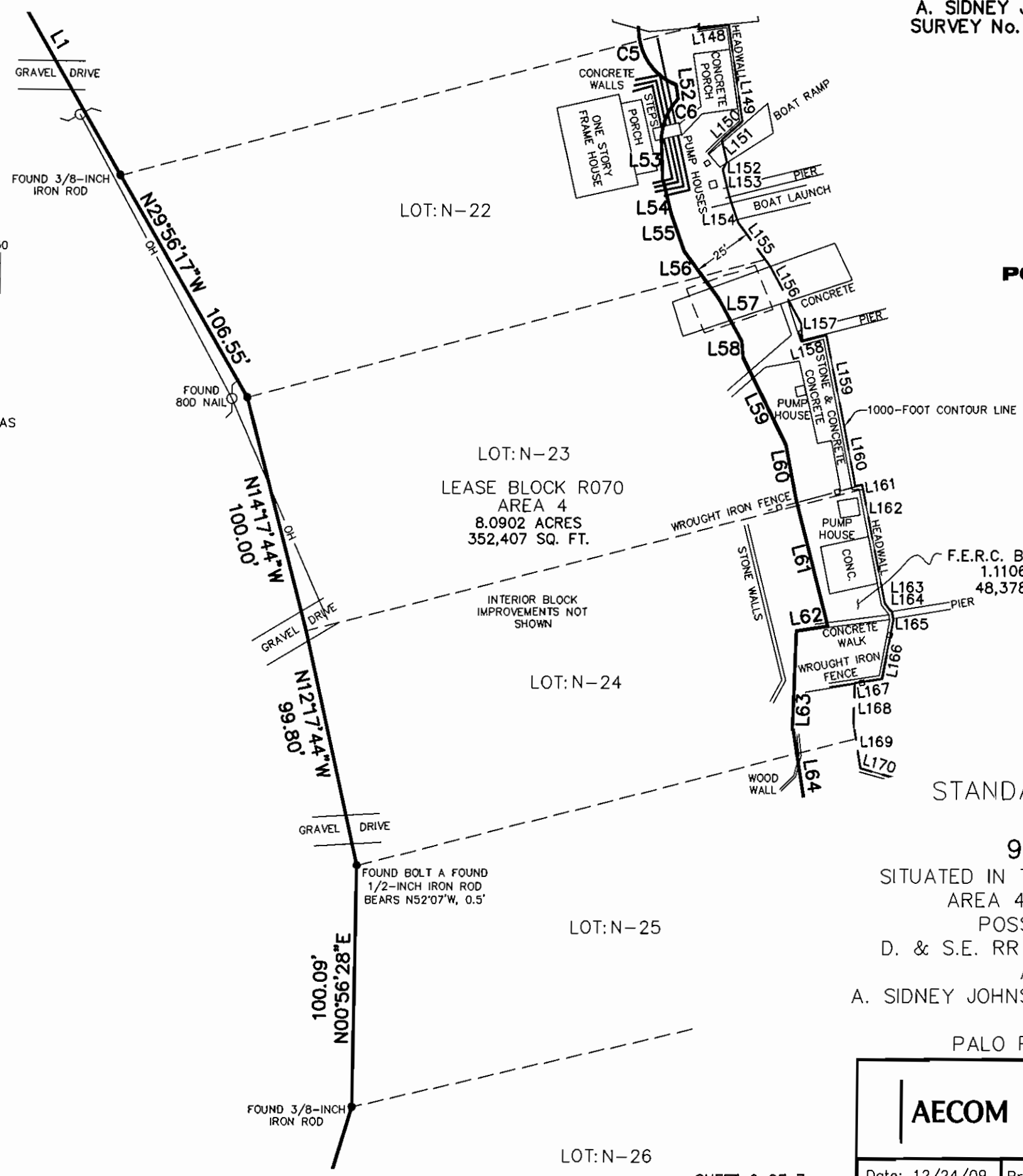
A. SIDNEY JOHNSTON ORIGINAL SURVEY No. 96, ABSTRACT 262

POSSUM KINGDOM LAKE
 THE BRAZOS RIVER CONSERVATION AND RECLAMATION DISTRICT
 TRACT 11-2-46
 VOLUME 182, PAGE 339
 D.R.P.P.C.T.



- LEGEND**
- = LEASE CORNER MARKER "AS NOTED"
 - ⊙ = WATER METER
 - ⊛ = LIGHT
 - △ = FLAG POLE
 - OH = OVERHEAD LINES
 - = POWER POLE

THE BRAZOS RIVER CONSERVATION AND RECLAMATION DISTRICT
 TRACT 11-2-46
 VOLUME 182, PAGE 339
 D.R.P.P.C.T.



STANDARD LAND SURVEY OF
9.2008 ACRES
 SITUATED IN TRACT 11-2-46 & 19A-3-3
 AREA 4, LOTS N-13 - N-27
 POSSUM KINGDOM LAKE
 D. & S.E. RR CO. ORIGINAL SURVEY No. 1
 ABSTRACT 1243
 A. SIDNEY JOHNSTON ORIGINAL SURVEY No. 96,
 ABSTRACT 262
 PALO PINTO COUNTY, TEXAS

AECOM	AECOM USA GROUP, INC. 1200 SUMMIT AVENUE, SUITE 600 FORT WORTH, TEXAS 76102 WWW.AECOM.COM 817.698.6770	
	Date: 12/24/09	Project No. 60052528.103

NO PART OR PARTS OF THIS DRAWING MAY BE REPRODUCED OR TRANSMITTED IN ANY WAY OR FORM (ELECTRONIC, MECHANICAL, PHOTOCOPYING, OR OTHERWISE) WITHOUT THE EXPRESS WRITTEN PERMISSION OF AECOM.

S:\Survey\Projects\60052528\3.0 Ref Docs\Drafting\Blocks\R070\60052528 R070By.dwg 2/3/2010 7:23:07 AM CST

