

VICINITY MAP  
NOT TO SCALE

LEGEND  
● = LEASE CORNER MARKER  
"AS NOTED"

ACREAGE TABLE  
LEASE BLOCK: 1.4741 ACRES  
F.E.R.C. BUFFER AREA: 0.3428 OF ONE ACRE  
SURVEY BLOCK: 1.8169 ACRES TOTAL

NOTES:

1) BEARINGS AND COORDINATES SHOWN HEREON ARE BASED ON THE NORTH AMERICAN DATUM OF 1983, TEXAS COORDINATE SYSTEM, NORTH CENTRAL ZONE (4202).

2) 1,000-FOOT CONTOUR ELEVATION OF POSSUM KINGDOM LAKE IS DETERMINED BASED ON MEASUREMENTS FROM THE TOP OF THE EXISTING SPILLWAY CREST GATES AT THE MORRIS SHEPPARD DAM BEING AT ELEVATION 1,000- FEET ABOVE MEAN SEA LEVEL AS NOTED IN FEDERAL POWER COMMISSION REPORT PROJECT NO. 1490 - TEXAS ON JUNE 2, 1938.

3) SET = 5/8" IRON ROD W/CAP STAMPED "AECOM" SET; D.R.P.C.T.= DEED RECORDS, PALO PINTO COUNTY, TEXAS; P.R.P.C.T.= PLAT RECORDS, PALO PINTO COUNTY, TEXAS; F.E.R.C.= FEDERAL ENERGY REGULATORY COMMISSION; J.R.P.C.T.= JUDGMENT RECORDS, PALO PINTO COUNTY, TEXAS.

4) METES AND BOUNDS DESCRIPTIONS TO ACCOMPANY THIS SURVEY.

5) LOCATION OF ROAD PROVIDED BY LINK FIELD SERVICES, DATED OCTOBER 28, 2009, AS SHOWN SHADED HEREON.

SURVEYORS CERTIFICATE

TO: BRAZOS RIVER AUTHORITY, PATTERSON PK LAND PARTNERSHIP, LTD., AND HERITAGE TITLE COMPANY OF AUSTIN, INC.

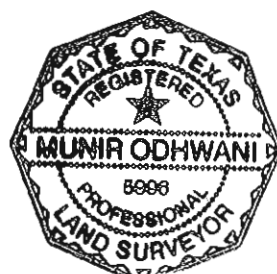
I, MUNIR ODHWANI, A REGISTERED PROFESSIONAL LAND SURVEYOR IN THE STATE OF TEXAS, REGISTRATION NUMBER 5996, HEREBY STATE THAT A SURVEY OF THE REAL PROPERTY DESCRIBED IN SEPARATE LEGAL DESCRIPTION AS NOTED HEREON, WAS ACTUALLY MADE UPON THE GROUND UNDER MY DIRECTION AND SUPERVISION, AND THAT TO THE BEST OF MY PROFESSIONAL KNOWLEDGE AND BELIEF, THE INFORMATION SHOWN HEREON IS CORRECT AS DETERMINED BY SAID SURVEY.

THIS SURVEY SUBSTANTIALLY COMPLIES WITH THE CURRENT TEXAS SOCIETY OF PROFESSIONAL SURVEYORS STANDARDS AND SPECIFICATIONS FOR A CATEGORY 1B, CONDITION II SURVEY.

*Munir Odhwani*

MUNIR ODHWANI  
REGISTERED PROFESSIONAL LAND SURVEYOR  
TEXAS REGISTRATION NO. 5996

DATE: FEBRUARY 19, 2010



LINE TABLE		
LINE	BEARING	DISTANCE
L1	S62°52'15"E	3.02'
L2	N75°13'28"E	33.32'
L3	N58°34'40"E	38.13'
L4	N64°00'16"E	12.17'
L5	S54°23'11"E	22.59'
L6	N62°29'26"E	18.05'
L7	S65°34'25"E	6.89'
L8	S63°16'44"E	18.67'
L9	S34°59'09"E	10.16'
L10	S38°45'42"E	6.23'
L11	S50°13'10"E	20.62'
L12	S40°32'17"E	8.87'
L13	S02°51'45"E	19.43'
L14	S23°28'13"E	35.95'
L15	S39°27'32"E	38.72'
L16	N77°45'07"E	11.49'
L17	S31°52'25"E	10.93'
L18	S30°10'46"E	15.22'
L19	S07°29'22"E	7.82'
L20	S05°24'28"W	17.30'
L21	S39°24'28"E	11.96'
L22	S54°18'14"W	9.78'
L23	S48°11'21"W	23.22'
L24	S30°53'57"W	52.08'
L25	S25°43'13"W	23.69'
L26	S25°19'43"W	37.50'
L27	S47°20'03"E	14.53'
L28	S02°58'41"E	4.61'
L29	N29°07'30"E	31.90'
L30	N75°13'28"E	9.79'
L31	N58°34'40"E	35.66'
L32	N64°00'16"E	19.53'
L33	N81°39'06"E	11.07'
L34	S54°23'11"E	18.33'
L35	N62°29'26"E	14.87'
L36	S65°34'25"E	19.57'
L37	S63°16'44"E	20.69'
L38	S56°21'41"E	9.89'
L39	S38°46'13"E	10.52'
L40	S50°53'13"W	2.03'

LINE TABLE		
LINE	BEARING	DISTANCE
L41	S38°45'42"E	2.90'
L42	N49°49'24"E	2.99'
L43	S41°37'09"E	22.04'
L44	S40°32'17"E	22.42'
L45	S27°57'36"E	15.65'
L46	S58°40'53"W	11.05'
L47	S23°28'13"E	27.89'
L48	S39°27'32"E	19.96'
L49	N77°45'07"E	9.98'
L50	N57°18'19"E	2.81'
L51	S35°34'31"E	13.12'
L52	S31°52'25"E	17.18'
L53	S30°10'46"E	20.61'
L54	S07°29'22"E	22.97'
L55	S36°39'05"W	3.15'
L56	S39°24'28"E	6.34'
L57	S70°17'47"E	7.80'
L58	S84°52'08"E	19.82'
L59	S77°16'00"E	20.12'
L60	S07°33'29"E	16.98'
L61	S78°33'10"W	11.79'
L62	S82°32'00"W	26.49'
L63	S89°49'07"W	17.38'
L64	S54°18'14"W	10.22'
L65	S48°11'21"W	18.09'
L66	S30°53'57"W	47.15'
L67	S25°43'13"W	22.48'
L68	S25°19'43"W	19.03'
L69	S47°20'03"E	6.34'
L70	S02°58'41"E	15.84'
L71	S89°23'26"W	25.02'

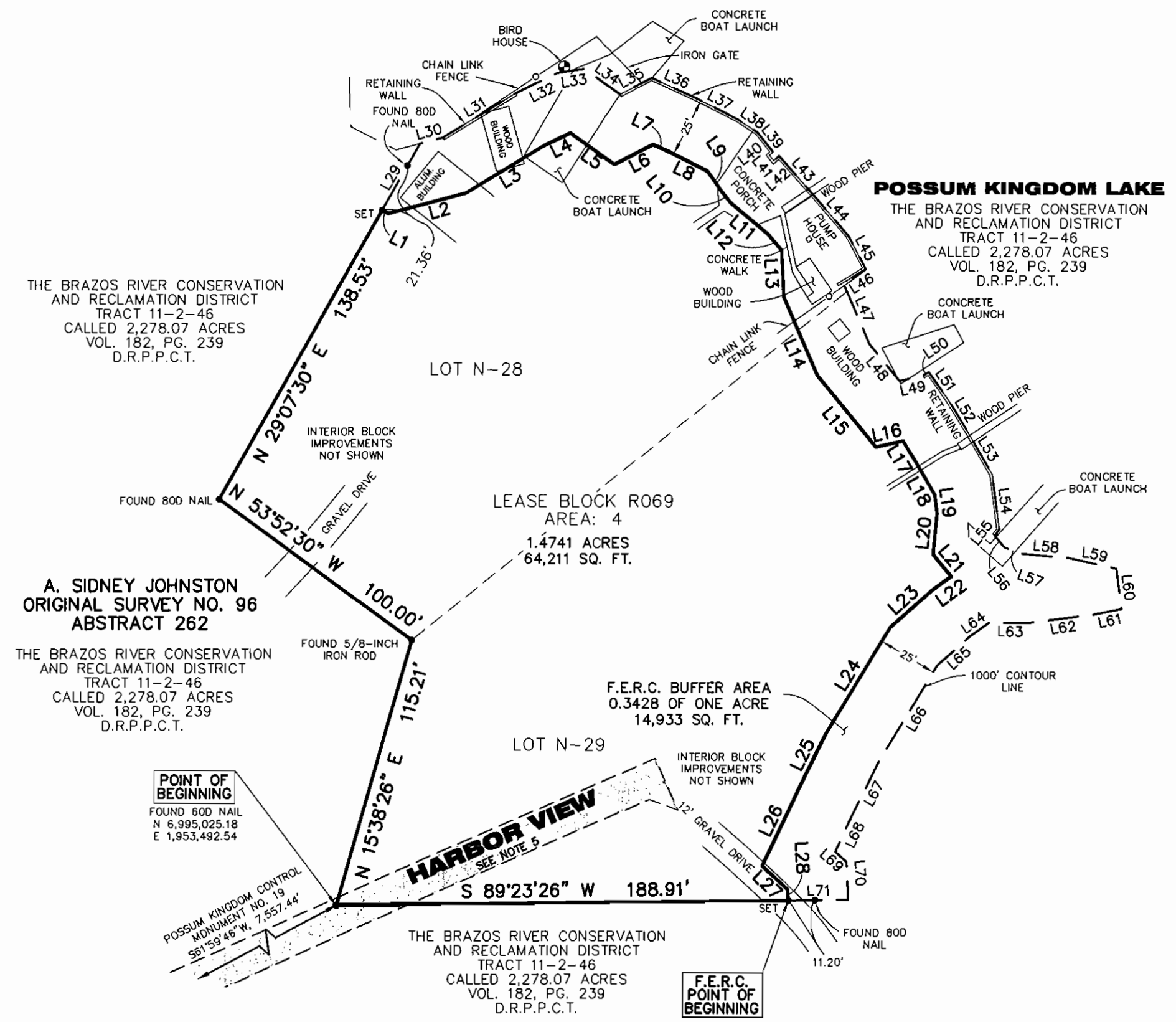
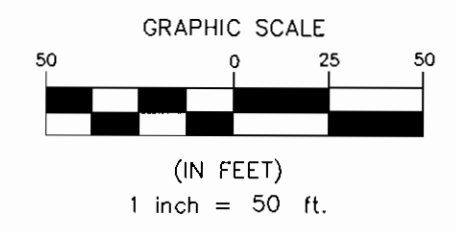
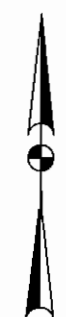
STANDARD LAND SURVEY  
OF  
1.8169 ACRES

SITUATED IN TRACT 11-2-46  
AREA 4, LOTS N-28 - N-29  
POSSUM KINGDOM LAKE

A. SIDNEY JOHNSTON ORIGINAL SURVEY NO.96  
ABSTRACT 262  
PALO PINTO COUNTY, TEXAS

AECOM

AECOM USA GROUP, INC.  
1200 SUMMIT AVENUE, SUITE 600  
FORT WORTH, TEXAS 76102  
WWW.AECOM.COM  
817.698.6770



THE BRAZOS RIVER CONSERVATION AND RECLAMATION DISTRICT TRACT 11-2-46 CALLED 2,278.07 ACRES VOL. 182, PG. 239 D.R.P.P.C.T.

A. SIDNEY JOHNSTON ORIGINAL SURVEY NO. 96 ABSTRACT 262 THE BRAZOS RIVER CONSERVATION AND RECLAMATION DISTRICT TRACT 11-2-46 CALLED 2,278.07 ACRES VOL. 182, PG. 239 D.R.P.P.C.T.

**POSSUM KINGDOM LAKE**  
THE BRAZOS RIVER CONSERVATION AND RECLAMATION DISTRICT TRACT 11-2-46 CALLED 2,278.07 ACRES VOL. 182, PG. 239 D.R.P.P.C.T.

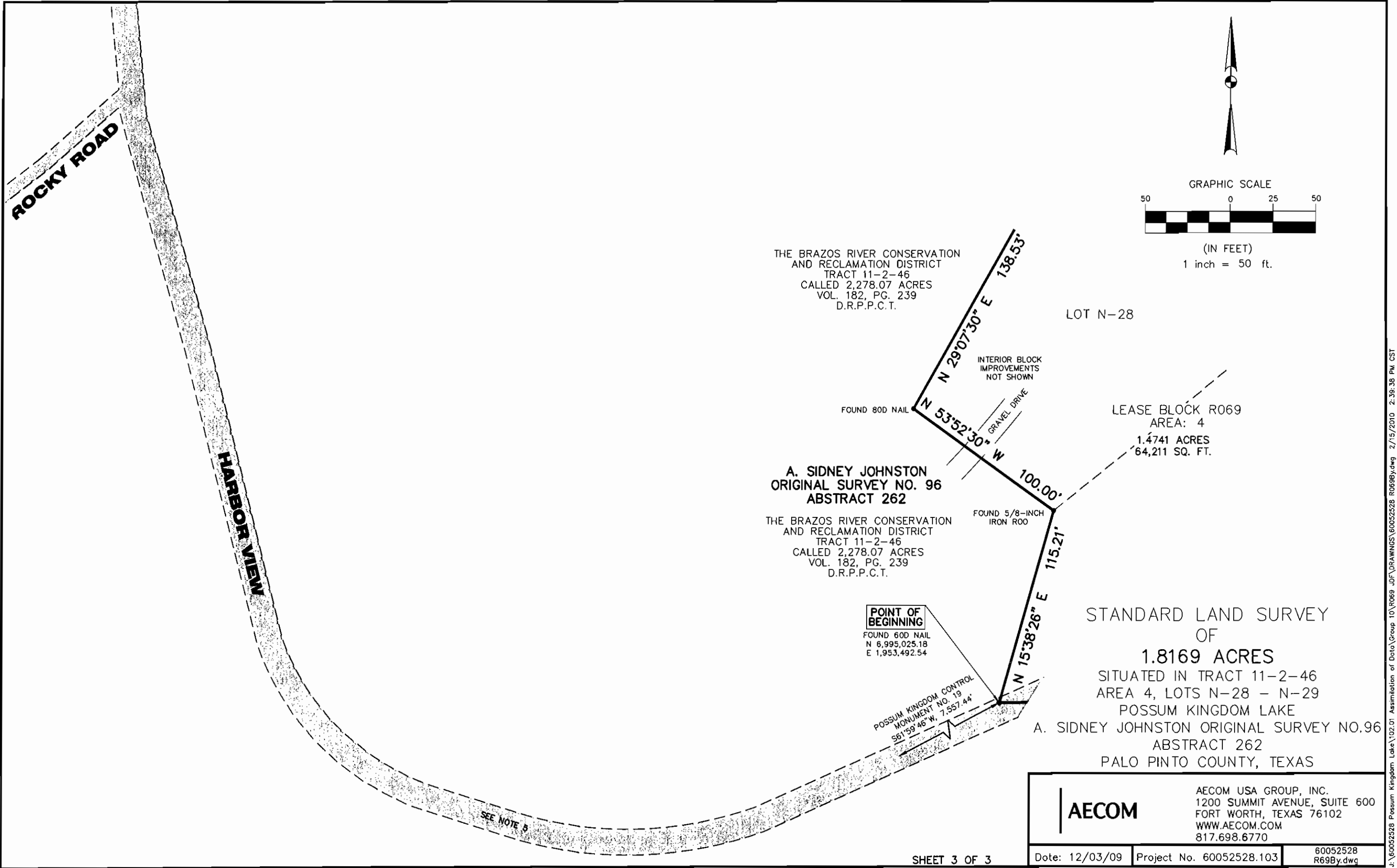
STANDARD LAND SURVEY OF  
**1.8169 ACRES**  
SITUATED IN TRACT 11-2-46  
AREA 4, LOTS N-28 - N-29  
POSSUM KINGDOM LAKE  
A. SIDNEY JOHNSTON ORIGINAL SURVEY NO.96  
ABSTRACT 262  
PALO PINTO COUNTY, TEXAS

**AECOM**  
AECOM USA GROUP, INC.  
1200 SUMMIT AVENUE, SUITE 600  
FORT WORTH, TEXAS 76102  
WWW.AECOM.COM  
817.698.6770

Date: 12/03/09 Project No. 60052528.103 60052528 R69By.dwg

NO PART OR PARTS OF THIS DRAWING MAY BE REPRODUCED OR TRANSMITTED IN ANY WAY OR FORM (ELECTRONIC, MECHANICAL, PHOTOCOPYING, OR OTHERWISE) WITHOUT THE EXPRESS WRITTEN PERMISSION OF AECOM.

J:\60052528 Possum Kingdom Lake\102.01 Assimilation of Data\Group 10\R069 JDF\DRAWINGS\60052528 R069By.dwg 2/15/2010 2:39:38 PM CST



<b>AECOM</b>	AECOM USA GROUP, INC. 1200 SUMMIT AVENUE, SUITE 600 FORT WORTH, TEXAS 76102 WWW.AECOM.COM 817.698.6770	
	Date: 12/03/09	Project No. 60052528.103
		60052528 R69By.dwg

NO PART OR PARTS OF THIS DRAWING MAY BE REPRODUCED OR RE TRANSMITTED IN ANY WAY OR FORM (ELECTRONIC, MECHANICAL, PHOTOCOPYING, OR OTHERWISE) WITHOUT THE EXPRESS WRITTEN PERMISSION OF AECOM.

J:\60052528 Possum Kingdom Lake\02.01 Assimilation of Data\Group 10\R069 JDF\DRAWINGS\60052528 R069By.dwg 2/15/2010 2:39:38 PM CST