

VICINITY MAP
NOT TO SCALE

- LEGEND
- = LEASE CORNER MARKER
"AS NOTED" (SEE NOTE 3)
 - OH = OVERHEAD LINES
 - ⊕ = POWER POLE

ACREAGE TABLE
 LEASE BLOCK: 13.1280 ACRES
 F.E.R.C. BUFFER AREA: 1.3563 ACRES
 SURVEY BLOCK: 14.4843 ACRES TOTAL

CURVE TABLE					
CURVE	LENGTH	DELTA	RADIUS	CHORD BEARING	CHORD
C1	24.91	19°59'03"	71.43	S61°02'03"E	24.79'
C2	37.88	18°46'46"	115.57	S10°24'17"W	37.71'
C3	36.96	84°42'21"	25.00	S01°47'08"E	33.68'
C4	37.83	86°42'37"	25.00	S52°54'04"W	34.33'
C5	14.92	18°24'45"	46.43	S61°49'12"E	14.86'
C6	38.74	24°30'22"	90.57	S13°16'06"W	38.44'
C7	99.29	25°51'33"	220.00	N02°33'46"W	98.45'

NOTES:

- 1) BEARINGS AND COORDINATES SHOWN HEREON ARE BASED ON THE NORTH AMERICAN DATUM OF 1983, TEXAS COORDINATE SYSTEM, NORTH CENTRAL ZONE (4202).
- 2) 1,000-FOOT CONTOUR ELEVATION OF POSSUM KINGDOM LAKE IS DETERMINED BASED ON MEASUREMENTS FROM THE TOP OF THE EXISTING SPILLWAY CREST GATES AT THE MORRIS SHEPPARD DAM BEING AT ELEVATION 1,000-FEET ABOVE MEAN SEA LEVEL AS NOTED IN FEDERAL POWER COMMISSION REPORT PROJECT NO. 1490 - TEXAS ON JUNE 2, 1938.
- 3) SET = 5/8" IRON ROD W/CAP STAMPED "AECOM" SET; D.R.P.P.C.T.= DEED RECORDS, PALO PINTO COUNTY, TEXAS; P.R.P.P.C.T.= PLAT RECORDS, PALO PINTO COUNTY, TEXAS; F.E.R.C.= FEDERAL ENERGY REGULATORY COMMISSION; J.R.P.P.C.T.= JUDGEMENT RECORDS, PALO PINTO COUNTY, TEXAS. LFS = 5/8" IRON ROD W/CAP STAMPED "LINKFIELD RPLS 5087" FOUND.
- 4) METES AND BOUNDS DESCRIPTIONS TO ACCOMPANY THIS SURVEY.
- 5) LOCATION, POSITION AND GEOMETRY OF ROAD RIGHTS-OF-WAY SHOWN AND DESCRIBED HEREON BASED ON SURVEYS PROVIDED BY LINK FIELD SERVICES, NO DEED OF RECORD HAS BEEN RECORDED AT THIS TIME FOR SAME UNLESS NOTED OTHERWISE.
- 6) IMPROVEMENTS SHOWN HEREON TIED FEBRUARY 2010.

SURVEYORS CERTIFICATE

TO: BRAZOS RIVER AUTHORITY, PATTERSON PK LAND PARTNERSHIP, LTD., AND HERITAGE TITLE COMPANY OF AUSTIN, INC.

I, MUNIR ODHWANI, A REGISTERED PROFESSIONAL LAND SURVEYOR IN THE STATE OF TEXAS, REGISTRATION NUMBER 5996, HEREBY STATE THAT A SURVEY OF THE REAL PROPERTY DESCRIBED IN SEPARATE LEGAL DESCRIPTION AS NOTED HEREON, WAS ACTUALLY MADE UPON THE GROUND UNDER MY DIRECTION AND SUPERVISION, AND THAT TO THE BEST OF MY PROFESSIONAL KNOWLEDGE AND BELIEF, THE INFORMATION SHOWN HEREON IS CORRECT AS DETERMINED BY SAID SURVEY.

THIS SURVEY SUBSTANTIALLY COMPLIES WITH THE CURRENT TEXAS SOCIETY OF PROFESSIONAL SURVEYORS STANDARDS AND SPECIFICATIONS FOR A CATEGORY 1B, CONDITION II SURVEY.

Munir Odhwani
 MUNIR ODHWANI
 REGISTERED PROFESSIONAL LAND SURVEYOR
 TEXAS REGISTRATION NO. 5996



DATE: MAY 21, 2010

STANDARD LAND SURVEY
 OF
14.4843 ACRES
 SITUATED IN TRACT 9-3-9
 AREAS 3 & 4
 LOTS S-1, S-2, W-1-N, W-1-C, W-1-S,
 & W-2 THROUGH W-7
 POSSUM KINGDOM LAKE
 GEORGE ARCHY SURVEY
 ABSTRACT 7
 PALO PINTO COUNTY, TEXAS

AECOM	AECOM USA GROUP, INC. 1200 SUMMIT AVENUE, SUITE 600 FORT WORTH, TEXAS 76102 WWW.AECOM.COM 817.698.6770	
	Date: 01/13/09	Project No. 60102581

LINE TABLE		
LINE	BEARING	DISTANCE
L1	S33°41'53"E	2.46'
L2	S28°23'42"E	18.13'
L3	S30°58'40"E	24.48'
L4	S27°40'32"E	17.17'
L5	S01°21'28"W	8.52'
L6	S28°06'21"E	16.45'
L7	S53°21'53"E	5.09'
L8	S03°42'45"E	7.31'
L9	S12°33'38"E	27.45'
L10	S11°37'47"E	22.14'
L11	S28°13'30"E	26.58'
L12	S32°53'38"E	15.79'
L13	S33°15'44"E	21.58'
L14	S16°42'56"E	18.00'
L15	S08°54'32"E	15.37'
L16	S12°22'20"E	22.54'
L17	S17°59'26"E	13.78'
L18	S13°44'10"W	0.86'
L19	S23°18'07"W	18.13'
L20	S11°18'40"W	17.67'
L21	S09°36'11"W	48.23'
L22	S23°23'50"E	28.50'
L23	S29°25'57"E	27.65'
L24	S47°45'41"E	26.84'
L25	S59°57'35"E	5.42'
L26	S71°01'35"E	4.63'
L27	S01°00'54"W	20.93'
L28	S16°02'29"E	20.76'
L29	S18°49'41"E	18.02'
L30	S23°45'50"E	11.99'
L31	S36°25'08"E	17.52'
L32	S54°18'00"E	2.96'
L33	S39°14'42"E	9.92'
L34	S48°21'45"E	18.41'
L35	S38°58'29"E	13.06'
L36	S14°23'04"E	10.91'
L37	S01°01'39"E	3.57'
L38	S15°54'00"W	9.26'
L39	S19°44'33"W	22.07'
L40	S01°18'35"E	16.09'
L41	S11°27'08"E	0.28'
L42	S37°02'55"W	13.64'
L43	S25°01'35"W	29.85'
L44	S07°23'56"W	26.50'
L45	S34°46'23"W	11.81'
L46	S45°33'15"W	24.15'
L47	S30°56'45"W	35.78'
L48	S09°43'46"W	44.55'
L49	S30°17'05"E	36.25'
L50	S77°03'01"E	26.83'

LINE TABLE		
LINE	BEARING	DISTANCE
L51	S66°28'18"E	30.32'
L52	S28°26'34"E	14.24'
L53	S44°26'55"E	13.60'
L54	S15°56'57"E	11.14'
L55	S27°12'25"E	11.95'
L56	S31°48'43"E	30.74'
L57	S46°28'52"E	31.70'
L58	S68°58'34"E	19.30'
L59	S41°18'07"E	7.89'
L60	S21°58'49"E	20.48'
L61	S34°35'10"E	25.45'
L62	S49°24'51"E	19.81'
L63	S16°33'59"E	55.69'
L64	S35°30'32"E	19.09'
L65	S58°28'33"E	19.79'
L66	S30°07'15"E	17.44'
L67	S40°53'25"E	25.62'
L68	S44°44'26"E	24.20'
L69	S48°17'21"E	26.66'
L70	S46°50'14"E	22.16'
L71	S43°52'01"E	26.59'
L72	S72°28'19"E	28.82'
L73	S47°07'14"E	22.49'
L74	S64°40'42"E	15.21'
L75	S44°30'39"E	9.53'
L76	S23°47'15"E	11.99'
L77	S36°25'28"E	29.94'
L78	S71°22'59"E	16.60'
L79	S24°54'29"E	10.97'
L80	S26°20'05"E	21.50'
L81	S24°50'59"E	22.35'
L82	S21°23'02"E	16.00'
L83	S44°08'20"E	12.23'
L84	S33°47'28"E	16.20'
L85	S31°16'15"E	26.70'
L86	S28°54'58"E	7.10'
L87	S35°28'58"E	20.48'
L88	S56°59'51"E	25.30'
L89	S51°30'01"E	23.39'
L90	S84°07'20"E	39.72'
L91	S49°31'57"E	9.23'
L92	S29°02'06"W	35.48'
L93	S12°19'57"E	50.54'
L94	S72°57'27"E	10.01'
L95	S30°20'14"E	15.91'
L96	S19°52'49"E	4.36'
L97	S00°18'40"E	7.36'
L98	S32°38'47"E	33.24'
L99	S23°50'56"W	36.93'
L100	S52°34'26"W	11.66'

LINE TABLE		
LINE	BEARING	DISTANCE
L101	N83°44'37"W	7.55'
L102	S38°57'03"W	22.82'
L103	S18°38'14"W	27.62'
L104	S15°01'38"W	26.06'
L105	S02°22'59"E	21.13'
L106	S05°28'41"E	26.65'
L107	S45°33'38"E	17.90'
L108	S44°34'43"W	29.41'
L109	S61°09'05"W	40.77'
L110	N70°01'07"E	25.50'
L111	S28°23'42"E	16.28'
L112	S30°58'40"E	24.63'
L113	S27°40'32"E	24.36'
L114	S01°21'28"W	8.42'
L115	S28°06'21"E	4.27'
L116	S53°21'53"E	11.05'
L117	S03°42'45"E	16.94'
L118	S12°33'38"E	25.72'
L119	S11°37'47"E	18.70'
L120	S28°13'30"E	21.91'
L121	S32°53'38"E	14.69'
L122	S33°15'44"E	25.13'
L123	S16°42'56"E	23.34'
L124	S08°54'32"E	16.32'
L125	S12°22'20"E	20.56'
L126	S17°59'26"E	19.65'
L127	S13°44'10"W	10.05'
L128	S23°18'07"W	17.59'
L129	S11°18'40"W	10.43'
L130	S09°36'11"E	40.59'
L131	S23°23'50"E	24.16'
L132	S29°25'57"E	22.30'
L133	S47°45'41"E	20.13'
L134	N37°24'46"E	4.34'
L135	S53°52'40"E	7.83'
L136	S36°43'37"W	3.99'
L137	S71°01'35"E	19.59'
L138	S68°33'46"E	8.97'
L139	S03°54'14"E	8.62'
L140	S30°55'51"W	8.18'
L141	S01°00'54"W	17.18'
L142	S16°02'29"E	16.40'
L143	S18°49'41"E	16.33'
L144	N64°47'41"E	3.99'
L145	S24°44'35"E	7.93'
L146	S61°57'35"W	4.14'
L147	S36°25'08"E	10.81'
L148	S54°18'00"E	2.33'
L149	S39°14'42"E	11.23'
L150	S48°21'45"E	18.47'

LINE TABLE		
LINE	BEARING	DISTANCE
L151	S38°58'29"E	20.56'
L152	S14°23'04"E	19.28'
L153	S01°01'39"E	10.22'
L154	S15°54'00"W	13.82'
L155	S19°44'33"W	18.26'
L156	S01°18'35"E	9.22'
L157	S11°27'08"E	8.26'
L158	S19°25'35"W	14.17'
L159	N72°20'33"W	3.71'
L160	S37°02'55"W	8.24'
L161	S25°01'35"W	23.35'
L162	S07°23'56"W	28.71'
L163	S34°46'23"W	20.26'
L164	S45°33'15"W	23.30'
L165	S30°56'45"W	27.89'
L166	S09°43'46"W	30.76'
L167	S30°17'05"E	16.34'
L168	S77°03'01"E	18.33'
L169	S66°28'18"E	19.64'
L170	N40°50'48"E	6.62'
L171	S60°25'14"E	9.15'
L172	N36°18'04"E	2.51'
L173	S28°26'34"E	32.01'
L174	S44°26'55"E	16.44'
L175	S15°56'57"E	15.03'
L176	S27°12'25"E	8.48'
L177	S31°48'43"E	26.52'
L178	S46°28'52"E	23.51'
L179	S68°58'34"E	20.48'
L180	S41°18'07"E	18.30'
L181	S21°58'49"E	21.97'
L182	S34°35'10"E	19.44'
L183	S49°24'51"E	23.92'
L184	S16°33'59"E	58.89'
L185	S35°30'32"E	9.84'
L186	S58°28'33"E	21.03'
L187	S30°07'15"E	21.40'
L188	S40°53'25"E	22.42'
L189	S44°44'26"E	22.58'
L190	S48°17'21"E	26.20'
L191	S46°50'14"E	23.13'
L192	S43°52'01"E	20.87'
L193	S72°28'19"E	28.07'
L194	S47°07'14"E	24.26'
L195	S64°40'42"E	15.79'
L196	S44°30'39"E	18.54'
L197	S23°47'15"E	13.79'
L198	S36°25'28"E	19.30'
L199	S71°22'59"E	19.46'
L200	S24°54'29"E	21.39'

LINE TABLE		
LINE	BEARING	DISTANCE
L201	S26°20'05"E	21.52'
L202	S24°50'59"E	23.43'
L203	S21°23'02"E	27.46'
L204	S20°18'58"W	14.24'
L205	S57°40'53"W	3.84'
L206	S44°08'20"E	7.47'
L207	S65°42'49"E	5.48'
L208	S29°28'33"E	22.28'
L209	S31°16'15"E	26.82'
L210	S28°54'58"E	6.18'
L211	S35°28'58"E	14.29'
L212	S56°59'51"E	21.75'
L213	S51°30'01"E	17.27'
L214	S84°07'20"E	40.19'
L215	S49°31'57"E	32.54'
L216	S17°01'28"E	13.25'
L217	S76°10'25"W	6.43'
L218	S29°02'06"W	33.90'
L219	S12°19'57"E	26.48'
L220	S72°57'27"E	9.64'
L221	S04°08'18"E	6.90'
L222	S30°20'14"E	18.44'
L223	S19°52'49"E	10.96'
L224	S00°18'40"E	4.42'
L225	S32°38'47"E	36.28'
L226	N89°01'02"E	2.33'
L227	S01°02'03"W	5.15'
L228	S88°51'25"W	1.65'
L229	S23°50'56"W	54.03'
L230	S52°34'26"W	28.09'
L231	N83°44'37"W	17.57'
L232	S11°56'10"W	7.09'
L233	S38°57'03"W	24.30'
L234	S18°38'14"W	22.35'
L235	S15°01'38"W	21.44'
L236	S02°22'59"E	16.62'
L237	S05°28'41"E	16.86'
L238	S45°33'38"E	14.31'
L239	S42°33'59"E	14.79'
L240	S02°40'33"W	5.46'
L241	S40°35'09"W	15.99'
L242	S44°34'43"W	37.30'
L243	S61°09'05"W	27.54'
L244	N62°51'05"W	30.16'

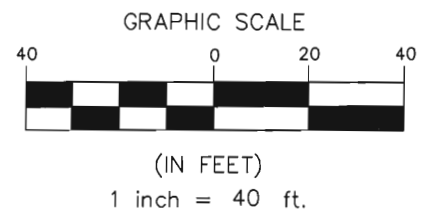
STANDARD LAND SURVEY
OF
14.4843 ACRES
SITUATED IN TRACT 9-3-9
AREAS 3 & 4
LOTS S-1, S-2, W-1-N, W-1-C, W-1-S,
& W-2 THROUGH W-7
POSSUM KINGDOM LAKE
GEORGE ARCHY SURVEY
ABSTRACT 7
PALO PINTO COUNTY, TEXAS

AECOM	AECOM USA GROUP, INC. 1200 SUMMIT AVENUE, SUITE 600 FORT WORTH, TEXAS 76102 WWW.AECOM.COM 817.698.6770	
	Date: 01/13/09	Project No. 60102581

LOT W-5

BRANDY ROAD

SEE NOTE 5



SHEET 5

FOUND 100D NAIL
W/ BRA CAP

N 86°51'09" W
454.94'

THE BRAZOS RIVER CONSERVATION
AND RECLAMATION DISTRICT
TRACT 9-3-9
TRACT ONE
CAUSE NO. 2539
DATED JULY 11, 1940
VOL. 5, PAGES 414
J.R.P.P.C.T.

13.1280 ACRES
571,857 SQ. FT.

LEASE BLOCK R060
AREA: 3

LOT W-6

INTERIOR BLOCK
IMPROVEMENTS NOT
SHOWN

GEORGE ARCHY SURVEY
ABSTRACT 7

N 03°08'55" E 195.00'

FOUND 100D NAIL
W/ BRA CAP

POINT OF
BEGINNING

FOUND 100D NAIL
W/ BRA CAP
N 6,988,648.04
E 1,949,035.67

POSSUM KINGDOM CONTROL
MONUMENT NO. 18
S35°59'51" W, 738.33'

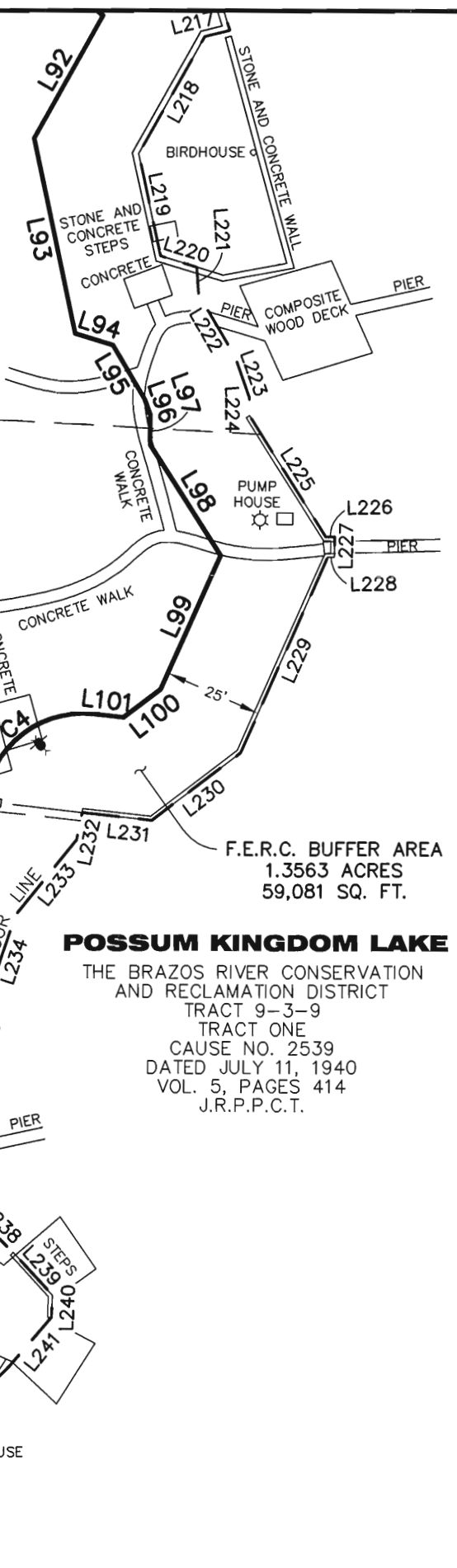
LOT W-7

N 62°51'05" W 180.66'

THE BRAZOS RIVER CONSERVATION
AND RECLAMATION DISTRICT
TRACT 9-3-9
TRACT ONE
CAUSE NO. 2539
DATED JULY 11, 1940
VOL. 5, PAGES 414
J.R.P.P.C.T.

F.E.R.C.
POINT OF
BEGINNING

FOUND 100D NAIL
W/ BRA CAP



POSSUM KINGDOM LAKE

THE BRAZOS RIVER CONSERVATION
AND RECLAMATION DISTRICT
TRACT 9-3-9
TRACT ONE
CAUSE NO. 2539
DATED JULY 11, 1940
VOL. 5, PAGES 414
J.R.P.P.C.T.

F.E.R.C. BUFFER AREA
1.3563 ACRES
59,081 SQ. FT.

STANDARD LAND SURVEY
OF

14.4843 ACRES

SITUATED IN TRACT 9-3-9

AREAS 3 & 4

LOTS S-1, S-2, W-1-N, W-1-C, W-1-S,

& W-2 THROUGH W-7

POSSUM KINGDOM LAKE

GEORGE ARCHY SURVEY

ABSTRACT 7

PALO PINTO COUNTY, TEXAS

AECOM

AECOM USA GROUP, INC.
1200 SUMMIT AVENUE, SUITE 600
FORT WORTH, TEXAS 76102
WWW.AECOM.COM
817.698.6770

REVISED: 05/21/10

SHEET 3 OF 11

Date: 01/13/09

Project No. 60102581

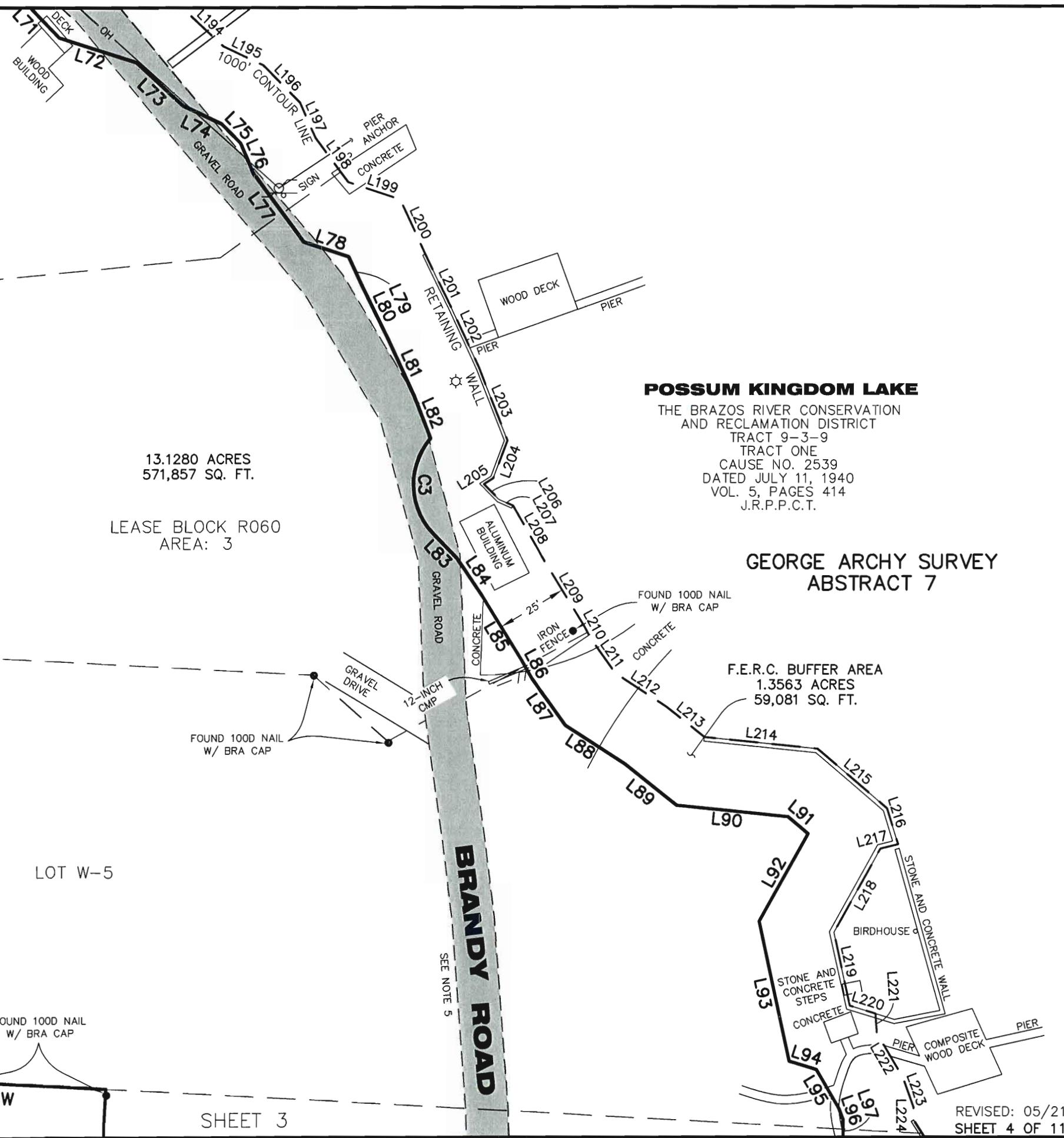
60052528
R060By.dwg

LOT W-3

SHEET 6

LOT W-4

SHEET 5



13.1280 ACRES
571,857 SQ. FT.

LEASE BLOCK R060
AREA: 3

LOT W-5

FOUND 100D NAIL
W/ BRA CAP

N 86°51'09" W
454.94'

SHEET 3

POSSUM KINGDOM LAKE

THE BRAZOS RIVER CONSERVATION
AND RECLAMATION DISTRICT
TRACT 9-3-9
TRACT ONE
CAUSE NO. 2539
DATED JULY 11, 1940
VOL. 5, PAGES 414
J.R.P.P.C.T.

**GEORGE ARCHY SURVEY
ABSTRACT 7**

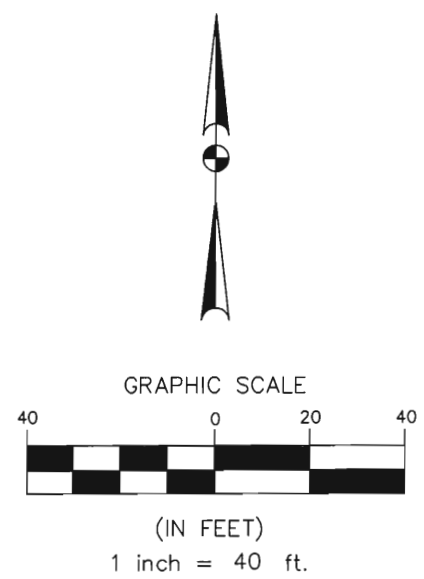
F.E.R.C. BUFFER AREA
1.3563 ACRES
59,081 SQ. FT.

STANDARD LAND SURVEY
OF

14.4843 ACRES

SITUATED IN TRACT 9-3-9
AREAS 3 & 4

LOTS S-1, S-2, W-1-N, W-1-C, W-1-S,
& W-2 THROUGH W-7
POSSUM KINGDOM LAKE
GEORGE ARCHY SURVEY
ABSTRACT 7
PALO PINTO COUNTY, TEXAS



AECOM

AECOM USA GROUP, INC.
1200 SUMMIT AVENUE, SUITE 600
FORT WORTH, TEXAS 76102
WWW.AECOM.COM
817.698.6770

REVISED: 05/21/10
SHEET 4 OF 11

Date: 01/13/09	Project No. 60102581	60052528 R060By.dwg
----------------	----------------------	------------------------

NO PART OR PARTS OF THIS DRAWING MAY BE REPRODUCED OR RE TRANSMITTED IN ANY WAY OR FORM (ELECTRONIC, MECHANICAL, PHOTOCOPYING, OR OTHERWISE) WITHOUT THE EXPRESS WRITTEN PERMISSION OF AECOM.

J:\60052528 Possum Kingdom Lake\102.01 Assimilation of Data\Group 10\R060 .JDF DRAWINGS\60052528 R060By.dwg 1/14/2010 7:39:54 AM CST

SHEET 7

LOT W-3

SHEET 6

N 03°08'55" E
150.00'

S 86°51'05" E 110.00'

GEORGE ARCHY SURVEY
ABSTRACT 7

13.1280 ACRES
571,857 SQ. FT.

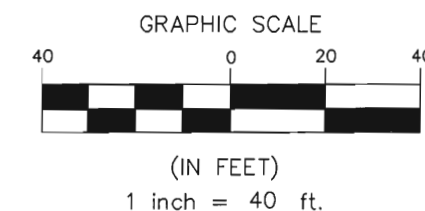
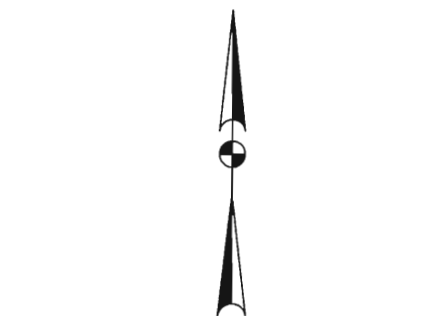
LEASE BLOCK R060
AREA: 3

LOT W-4

LOT W-3

N 03°08'55" E 300.00'

THE BRAZOS RIVER CONSERVATION
AND RECLAMATION DISTRICT
TRACT 9-3-9
TRACT ONE
CAUSE NO. 2539
DATED JULY 11, 1940
VOL. 5, PAGES 414
J.R.P.P.C.T.



STANDARD LAND SURVEY
OF

14.4843 ACRES

SITUATED IN TRACT 9-3-9
AREAS 3 & 4

LOTS S-1, S-2, W-1-N, W-1-C, W-1-S,
& W-2 THROUGH W-7
POSSUM KINGDOM LAKE
GEORGE ARCHY SURVEY
ABSTRACT 7
PALO PINTO COUNTY, TEXAS

SHEET 4

N 86°51'09" W 454.94'

AECOM

AECOM USA GROUP, INC.
1200 SUMMIT AVENUE, SUITE 600
FORT WORTH, TEXAS 76102
WWW.AECOM.COM
817.698.6770

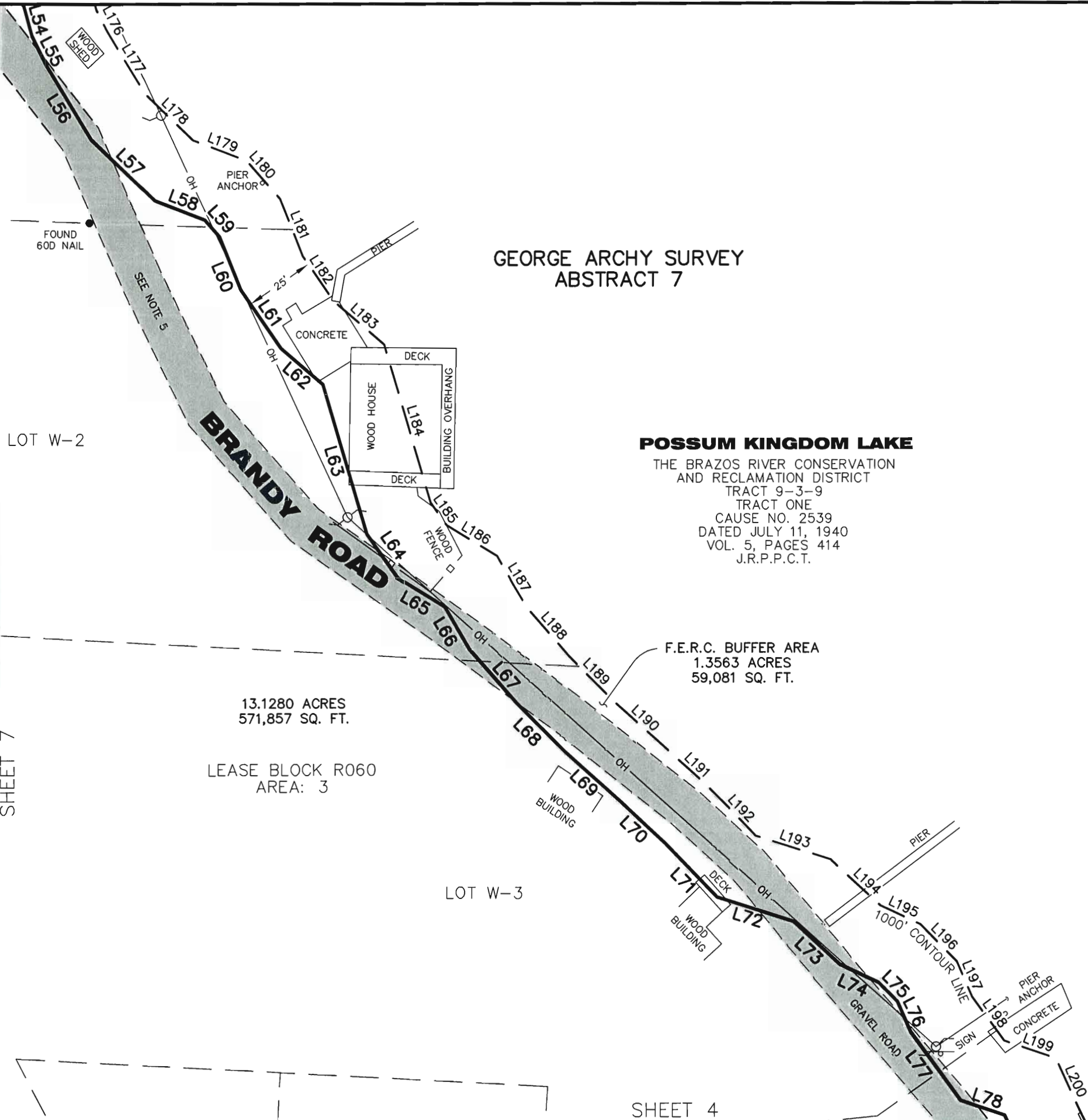
REVISED: 05/21/10

SHEET 5 OF 11

Date: 01/13/09

Project No. 60102581

60052528
R060By.dwg

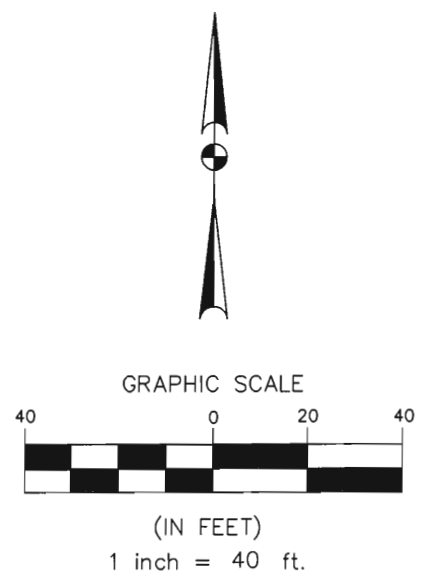


**GEORGE ARCHY SURVEY
ABSTRACT 7**

POSSUM KINGDOM LAKE
 THE BRAZOS RIVER CONSERVATION
 AND RECLAMATION DISTRICT
 TRACT 9-3-9
 TRACT ONE
 CAUSE NO. 2539
 DATED JULY 11, 1940
 VOL. 5, PAGES 414
 J.R.P.C.T.

13.1280 ACRES
 571,857 SQ. FT.
 LEASE BLOCK R060
 AREA: 3

STANDARD LAND SURVEY
 OF
14.4843 ACRES
 SITUATED IN TRACT 9-3-9
 AREAS 3 & 4
 LOTS S-1, S-2, W-1-N, W-1-C, W-1-S,
 & W-2 THROUGH W-7
 POSSUM KINGDOM LAKE
 GEORGE ARCHY SURVEY
 ABSTRACT 7
 PALO PINTO COUNTY, TEXAS



SHEET 7

SHEET 4

REVISED: 05/21/10
 SHEET 6 OF 11

AECOM	AECOM USA GROUP, INC. 1200 SUMMIT AVENUE, SUITE 600 FORT WORTH, TEXAS 76102 WWW.AECOM.COM 817.698.6770	
	Date: 01/13/09	Project No. 60102581

NO PART OR PARTS OF THIS DRAWING MAY BE REPRODUCED OR TRANSMITTED IN ANY WAY OR FORM (ELECTRONIC, MECHANICAL, PHOTOCOPYING, OR OTHERWISE) WITHOUT THE EXPRESS WRITTEN PERMISSION OF AECOM.

J:\60052528 Possum Kingdom Lake\102.01 Assimilation of Data\Group 10\R060.dwg\DRAWINGS\60052528 R060By.dwg 1/14/2010 7:39:54 AM CST

LOT W-1-S SHEET 8

BRANDY ROAD
SEE NOTE 5



N 01°55'15" E
542.99'

FOUND 1/2-INCH
IRON ROD

N 88°04'45" W 125.11'

THE BRAZOS RIVER CONSERVATION
AND RECLAMATION DISTRICT
TRACT 9-3-9
TRACT ONE
CAUSE NO. 2539
DATED JULY 11, 1940
VOL. 5, PAGES 414
J.R.P.P.C.T.

N 03°08'55" E 144.00'

13.1280 ACRES
571,857 SQ. FT.

LEASE BLOCK R060
AREA: 3

LOT W-2

N 86°51'05" W 140.00'

GEORGE ARCHY SURVEY
ABSTRACT 7

N 03°08'55" E
150.00'

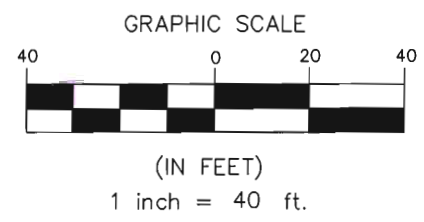
LOT W-3

N 03°08'55" E
300.00'

S 86°51'05" E 110.00'

SHEET 5

REVISED: 05/21/10 SHEET 7 OF 11



STANDARD LAND SURVEY
OF
14.4843 ACRES
SITUATED IN TRACT 9-3-9
AREAS 3 & 4
LOTS S-1, S-2, W-1-N, W-1-C, W-1-S,
& W-2 THROUGH W-7
POSSUM KINGDOM LAKE
GEORGE ARCHY SURVEY
ABSTRACT 7
PALO PINTO COUNTY, TEXAS

AECOM

AECOM USA GROUP, INC.
1200 SUMMIT AVENUE, SUITE 600
FORT WORTH, TEXAS 76102
WWW.AECOM.COM
817.698.6770

Date: 01/13/09 Project No. 60102581 60052528 R060By.dwg

SHEET 9

N 01°55'15" E 542.99'

LOT W-1-C

13.1280 ACRES
571,857 SQ. FT.

LEASE BLOCK R060
AREA: 3

FOUND 1/2-INCH
IRON ROD

THE BRAZOS RIVER CONSERVATION
AND RECLAMATION DISTRICT
TRACT 9-3-9
CAUSE NO. 2539
DATED JULY 11, 1940
VOL. 5, PAGES 414
J.R.P.P.C.T.

SEE NOTE 5

BRANDY ROAD

ROAD

LOT W-1-S

N 03°08'55" E
144.00'

N 88°04'45" W 125.11'

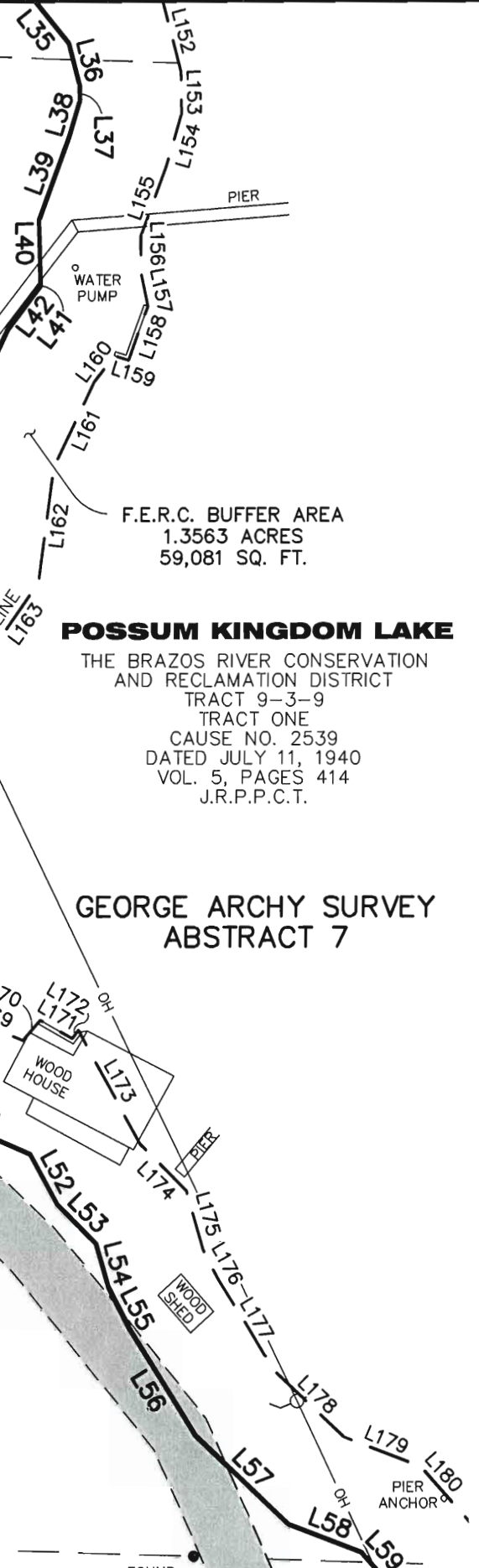
FOUND 1/2-INCH
IRON ROD

SHEET 7

REVISED: 05/21/10

FOUND
60D NAIL

SHEET 8 OF 11



F.E.R.C. BUFFER AREA
1.3563 ACRES
59,081 SQ. FT.

POSSUM KINGDOM LAKE

THE BRAZOS RIVER CONSERVATION
AND RECLAMATION DISTRICT
TRACT 9-3-9
TRACT ONE
CAUSE NO. 2539
DATED JULY 11, 1940
VOL. 5, PAGES 414
J.R.P.P.C.T.

**GEORGE ARCHY SURVEY
ABSTRACT 7**

STANDARD LAND SURVEY
OF

14.4843 ACRES

SITUATED IN TRACT 9-3-9
AREAS 3 & 4

LOTS S-1, S-2, W-1-N, W-1-C, W-1-S,
& W-2 THROUGH W-7
POSSUM KINGDOM LAKE
GEORGE ARCHY SURVEY
ABSTRACT 7
PALO PINTO COUNTY, TEXAS

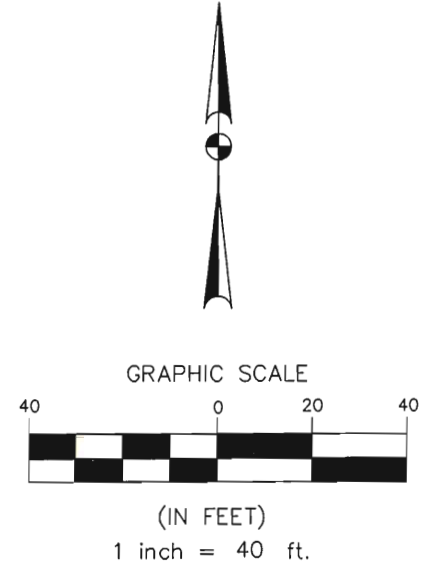
AECOM

AECOM USA GROUP, INC.
1200 SUMMIT AVENUE, SUITE 600
FORT WORTH, TEXAS 76102
WWW.AECOM.COM
817.698.6770

Date: 01/13/09

Project No. 60102581

60052528
R060By.dwg



SHEET 11
LOT S-1

LEASE BLOCK R060
AREA: 4

SHEET 10

N 69°53'28" W
40.81'

N 51°06'53" W
40.12'

N 21°24'25" W
33.70'

FOUND 1/2-INCH
IRON PIPE

AREA NOT COVERED
BY LEASE DESCRIPTIONS

13.1280 ACRES
571,857 SQ. FT.

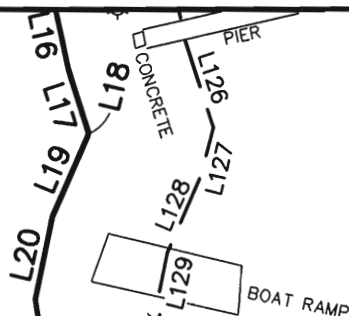
LEASE BLOCK R060
AREA: 3

LOT W-1-N

SEE NOTE 5

BRANDY ROAD

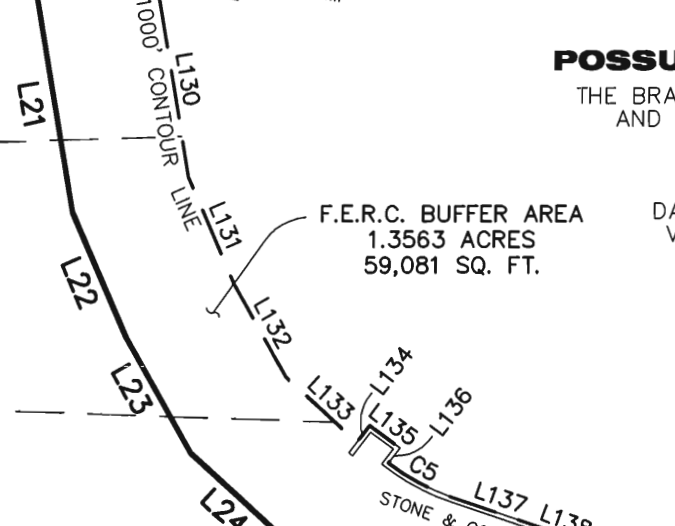
N 01°55'15" E 542.99'



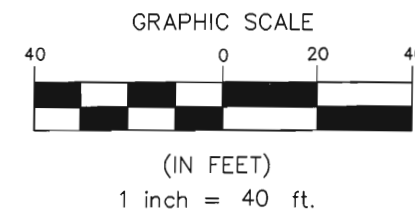
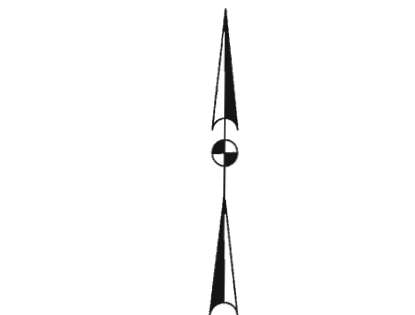
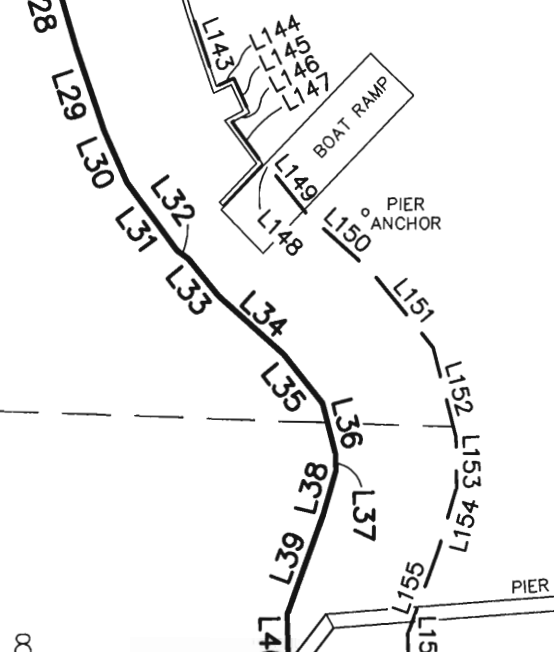
POSSUM KINGDOM LAKE

THE BRAZOS RIVER CONSERVATION
AND RECLAMATION DISTRICT
TRACT 9-3-9
TRACT ONE
CAUSE NO. 2539
DATED JULY 11, 1940
VOL. 5, PAGES 414
J.R.P.P.C.T.

F.E.R.C. BUFFER AREA
1.3563 ACRES
59,081 SQ. FT.



**GEORGE ARCHY SURVEY
ABSTRACT 7**



STANDARD LAND SURVEY
OF

14.4843 ACRES

SITUATED IN TRACT 9-3-9

AREAS 3 & 4

LOTS S-1, S-2, W-1-N, W-1-C, W-1-S,
& W-2 THROUGH W-7

POSSUM KINGDOM LAKE

GEORGE ARCHY SURVEY

ABSTRACT 7

PALO PINTO COUNTY, TEXAS

AECOM

AECOM USA GROUP, INC.
1200 SUMMIT AVENUE, SUITE 600
FORT WORTH, TEXAS 76102
WWW.AECOM.COM
817.698.6770

REVISED: 05/21/10
SHEET 9 OF 11

Date: 01/13/09

Project No. 60102581

60052528
R060By.dwg

SHEET 11

LOT S-1

LEASE BLOCK R060
AREA: 4

N 15°29'33" W
151.87'

S 81°13'05" W
28.41'

N 84°13'42" W
19.36'

N 69°53'28" W
40.81'

N 51°06'53" W
40.12'

N 21°24'25" W
33.70'

FOUND 1/2-INCH
IRON PIPE

AREA NOT COVERED
BY LEASE DESCRIPTIONS

13.1280 ACRES
571,857 SQ. FT.

LEASE BLOCK R060
AREA: 3

LOT W-1-N

N 01°55'15" E 542.99'

SEE NOTE 5

KOKO ROAD
BRANDY ROAD

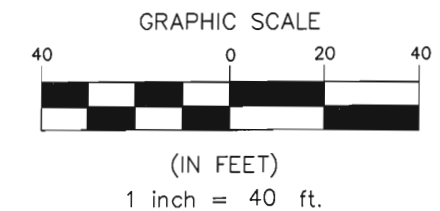
ROAD

GRAVEL ROAD

BRANDY ROAD

GEORGE ARCHY SURVEY
ABSTRACT 7

THE BRAZOS RIVER CONSERVATION
AND RECLAMATION DISTRICT
TRACT 9-3-9
TRACT ONE
CAUSE NO. 2539
DATED JULY 11, 1940
VOL. 5, PAGES 414
J.R.P.C.T.



STANDARD LAND SURVEY
OF
14.4843 ACRES
SITUATED IN TRACT 9-3-9
AREAS 3 & 4
LOTS S-1, S-2, W-1-N, W-1-C, W-1-S,
& W-2 THROUGH W-7
POSSUM KINGDOM LAKE
GEORGE ARCHY SURVEY
ABSTRACT 7
PALO PINTO COUNTY, TEXAS

AECOM

AECOM USA GROUP, INC.
1200 SUMMIT AVENUE, SUITE 600
FORT WORTH, TEXAS 76102
WWW.AECOM.COM
817.698.6770

SHEET 9

REVISED: 05/21/10

SHEET 10 OF 11

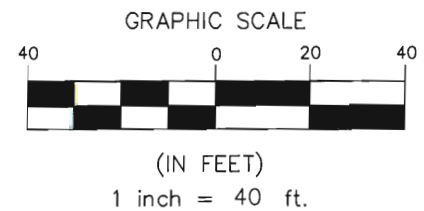
Date: 01/13/09

Project No. 60102581

60052528
R060By.dwg

NO PART OR PARTS OF THIS DRAWING MAY BE REPRODUCED OR TRANSMITTED IN ANY WAY OR FORM (ELECTRONIC, MECHANICAL, PHOTOCOPYING, OR OTHERWISE) WITHOUT THE EXPRESS WRITTEN PERMISSION OF AECOM.

J:\60052528-Possum Kingdom Lake\102.01 Assimilation of Data\Group 10\R060 JDF DRAWINGS\60052528 R060By.dwg 1/14/2010 7:38:54 AM CST

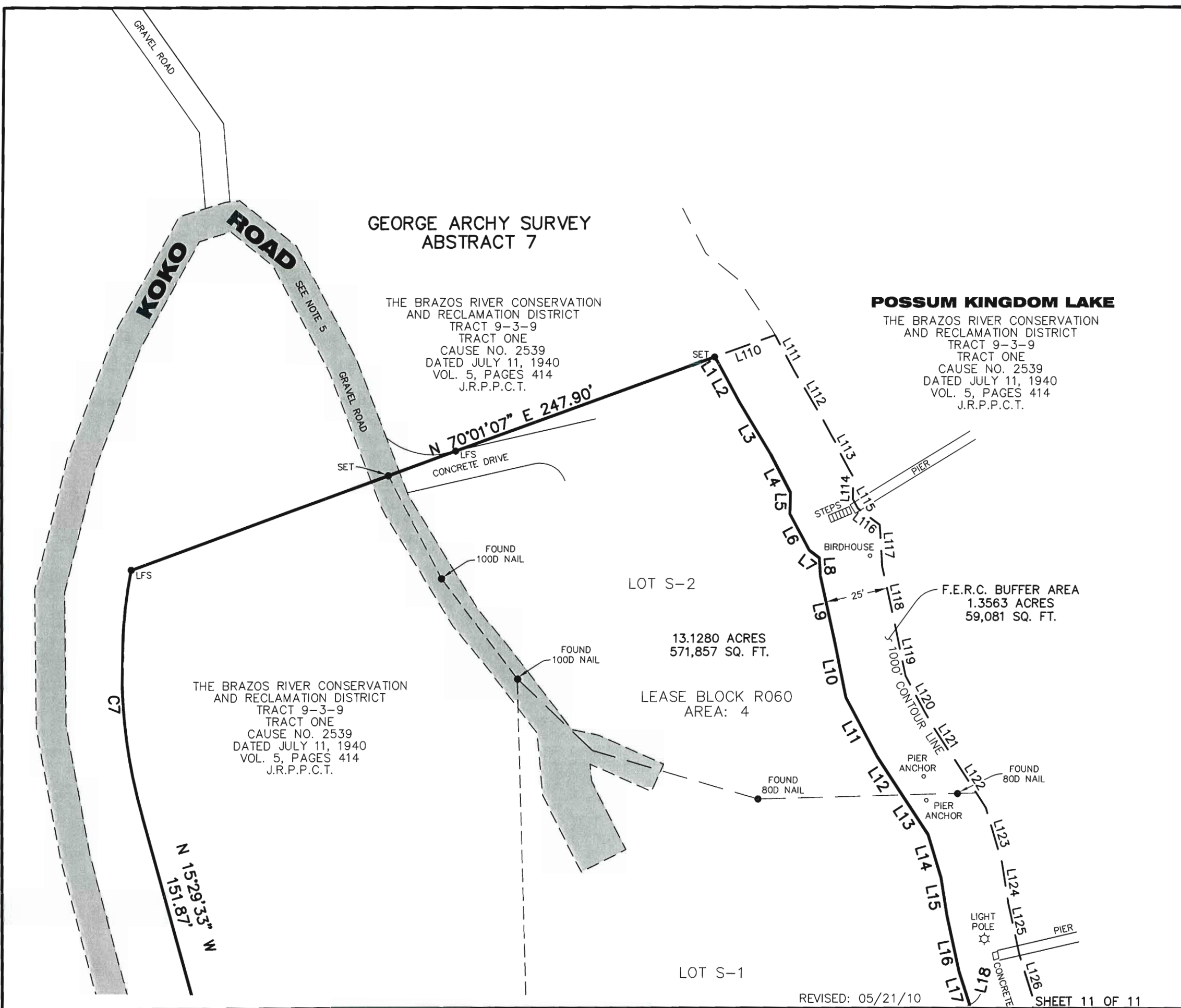


**GEORGE ARCHY SURVEY
ABSTRACT 7**

THE BRAZOS RIVER CONSERVATION
AND RECLAMATION DISTRICT
TRACT 9-3-9
TRACT ONE
CAUSE NO. 2539
DATED JULY 11, 1940
VOL. 5, PAGES 414
J.R.P.P.C.T.

POSSUM KINGDOM LAKE

THE BRAZOS RIVER CONSERVATION
AND RECLAMATION DISTRICT
TRACT 9-3-9
TRACT ONE
CAUSE NO. 2539
DATED JULY 11, 1940
VOL. 5, PAGES 414
J.R.P.P.C.T.



STANDARD LAND SURVEY
OF

14.4843 ACRES

SITUATED IN TRACT 9-3-9
AREAS 3 & 4
LOTS S-1, S-2, W-1-N, W-1-C, W-1-S,
& W-2 THROUGH W-7
POSSUM KINGDOM LAKE
GEORGE ARCHY SURVEY
ABSTRACT 7
PALO PINTO COUNTY, TEXAS

AECOM

AECOM USA GROUP, INC.
1200 SUMMIT AVENUE, SUITE 600
FORT WORTH, TEXAS 76102
WWW.AECOM.COM
817.698.6770

REVISED: 05/21/10

SHEET 11 OF 11

Date: 01/13/09

Project No. 60102581

60052528
R060By.dwg

NO PART OR PARTS OF THIS DRAWING MAY BE REPRODUCED OR RETRANSMITTED IN ANY WAY OR FORM (ELECTRONIC, MECHANICAL, PHOTOCOPYING, OR OTHERWISE) WITHOUT THE EXPRESS WRITTEN PERMISSION OF AECOM.

J:\60052528 Possum Kingdom Lake\102.01 Assimilation of Data\Group 10\R060 JDF DRAWINGS\60052528 R060By.dwg 1/14/2010 7:39:54 AM CST