

VICINITY MAP  
NOT TO SCALE

- LEGEND**
- = LEASE CORNER MARKER  
"AS NOTED" (SEE NOTE 3)
  - OH = OVERHEAD LINES
  - = POWER POLE

ACREAGE TABLE	
LEASE BLOCK:	28.8672 ACRES
F.E.R.C. BUFFER AREA:	3.2989 ACRES
SURVEY BLOCK:	32.1661 ACRES TOTAL

CURVE TABLE					
CURVE	LENGTH	DELTA	RADIUS	CHORD BEARING	CHORD
C1	58.37	133°46'59"	25.00	S70°06'25"E	45.99'
C2	1.23	0°19'39"	215.00	N01°10'20"W	1.23'
C3	20.33	5°25'05"	215.00	N12°04'13"W	20.32'
C4	27.83	8°37'12"	185.00	N11°43'41"W	27.81'
C5	24.89	16°46'40"	85.00	N00°58'15"E	24.80'

**NOTES:**

- 1) BEARINGS AND COORDINATES SHOWN HEREON ARE BASED ON THE NORTH AMERICAN DATUM OF 1983, TEXAS COORDINATE SYSTEM, NORTH CENTRAL ZONE (4202).
- 2) 1,000-FOOT CONTOUR ELEVATION OF POSSUM KINGDOM LAKE IS DETERMINED BASED ON MEASUREMENTS FROM THE TOP OF THE EXISTING SPILLWAY CREST GATES AT THE MORRIS SHEPPARD DAM BEING AT ELEVATION 1,000- FEET ABOVE MEAN SEA LEVEL AS NOTED IN FEDERAL POWER COMMISSION REPORT PROJECT NO. 1490 - TEXAS ON JUNE 2, 1938.
- 3) SET = 5/8" IRON ROD W/CAP STAMPED "AECOM" SET; D.R.P.P.C.T.= DEED RECORDS, PALO PINTO COUNTY, TEXAS; P.R.P.P.C.T.= PLAT RECORDS, PALO PINTO COUNTY, TEXAS; F.E.R.C.= FEDERAL ENERGY REGULATORY COMMISSION; J.R.P.P.C.T.= JUDGEMENT RECORDS, PALO PINTO COUNTY, TEXAS. LFS = 5/8" IRON ROD W/CAP STAMPED "LINKFIELD RPLS 5087" FOUND.
- 4) METES AND BOUNDS DESCRIPTIONS TO ACCOMPANY THIS SURVEY.
- 5) LOCATION, POSITION AND GEOMETRY OF ROAD RIGHTS-OF-WAY SHOWN AND DESCRIBED HEREON BASED ON SURVEYS PROVIDED BY LINK FIELD SERVICES, NO DEED OF RECORD HAS BEEN RECORDED AT THIS TIME FOR SAME UNLESS NOTED OTHERWISE.
- 6) IMPROVEMENTS SHOWN HEREON TIED FEBRUARY 2010.

**SURVEYORS CERTIFICATE**

TO: BRAZOS RIVER AUTHORITY, PATTERSON PK LAND PARTNERSHIP, LTD., AND HERITAGE TITLE COMPANY OF AUSTIN, INC.

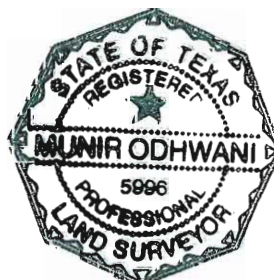
I, MUNIR ODHWANI, A REGISTERED PROFESSIONAL LAND SURVEYOR IN THE STATE OF TEXAS, REGISTRATION NUMBER 5996, HEREBY STATE THAT A SURVEY OF THE REAL PROPERTY DESCRIBED IN SEPARATE LEGAL DESCRIPTION AS NOTED HEREON, WAS ACTUALLY MADE UPON THE GROUND UNDER MY DIRECTION AND SUPERVISION, AND THAT TO THE BEST OF MY PROFESSIONAL KNOWLEDGE AND BELIEF, THE INFORMATION SHOWN HEREON IS CORRECT AS DETERMINED BY SAID SURVEY.

THIS SURVEY SUBSTANTIALLY COMPLIES WITH THE CURRENT TEXAS SOCIETY OF PROFESSIONAL SURVEYORS STANDARDS AND SPECIFICATIONS FOR A CATEGORY 1B, CONDITION II SURVEY.

*Munir Odhwani*

MUNIR ODHWANI  
REGISTERED PROFESSIONAL LAND SURVEYOR  
TEXAS REGISTRATION NO. 5996

DATE: MAY 21, 2010



STANDARD LAND SURVEY  
OF

**32.1661 ACRES**

SITUATED IN TRACTS 9-3-9 & 178-3-7  
AREA 3, LOTS 1-6, W-9 - W-25  
POSSUM KINGDOM LAKE  
LAFAYETTE BLACK SURVEY, ABSTRACT 40  
AND J.K.P. HUGHES NO. 1 SURVEY  
ABSTRACT 2082  
PALO PINTO COUNTY, TEXAS

**AECOM**

AECOM USA GROUP, INC.  
1200 SUMMIT AVENUE, SUITE 600  
FORT WORTH, TEXAS 76102  
WWW.AECOM.COM  
817.698.6770

REVISED: 05/21/10

SHEET 1 OF 11

Date: 12/22/09

Project No. 60102581

60052528  
R58By.dwg

LINE TABLE		
LINE	BEARING	DISTANCE
L1	S69°54'34"E	11.78'
L2	S74°47'09"E	45.80'
L3	N16°42'12"E	52.74'
L4	N29°30'31"E	15.29'
L5	N86°09'10"E	16.13'
L6	N88°55'16"E	28.23'
L7	S82°20'04"E	26.73'
L8	S74°55'19"E	60.92'
L9	N57°52'39"E	36.54'
L10	N60°26'09"E	36.25'
L11	N33°06'59"E	29.94'
L12	N88°56'23"E	9.78'
L13	S76°18'31"E	29.17'
L14	S84°06'22"E	30.02'
L15	S74°56'58"E	29.87'
L16	S77°14'23"E	12.41'
L17	S02°53'40"E	9.78'
L18	S15°11'46"W	28.71'
L19	S09°33'35"W	35.18'
L20	S08°49'08"W	40.79'
L21	S59°09'57"E	38.92'
L22	N68°12'55"E	43.54'
L23	N16°08'56"E	32.09'
L24	N24°06'32"E	29.30'
L25	N26°29'18"E	25.25'
L26	N38°23'50"E	31.90'
L27	N24°40'39"E	13.83'
L28	S84°46'07"E	10.10'
L29	S74°08'05"E	25.38'
L30	S76°08'01"E	41.48'
L31	S70°24'28"E	23.12'
L32	S54°02'36"E	29.53'
L33	S67°38'19"E	27.18'
L34	S89°47'28"E	68.19'
L35	S80°34'42"E	29.27'
L36	S79°18'51"E	25.98'
L37	S69°35'56"E	19.62'
L38	S26°19'12"E	12.53'
L39	S07°50'44"W	22.59'
L40	S06°20'35"E	9.43'
L41	S13°11'07"W	24.46'
L42	S09°22'20"W	24.06'
L43	S01°22'23"E	29.46'
L44	S03°12'56"E	11.10'
L45	N43°00'05"E	28.17'
L46	N12°14'10"E	18.96'
L47	N23°00'53"E	22.38'
L48	N44°25'18"E	13.25'
L49	N39°06'50"E	31.73'
L50	N10°09'03"E	20.35'
L51	S72°10'09"E	14.84'
L52	S68°11'21"E	29.18'
L53	S67°56'46"E	13.86'
L54	S04°07'43"W	22.47'
L55	S77°21'00"E	50.11'
L56	S18°02'22"E	59.37'
L57	N88°08'04"E	50.37'
L58	N80°12'07"E	39.59'
L59	N45°37'52"E	12.95'
L60	S54°16'07"E	5.21'
L61	S42°23'53"E	34.54'

LINE TABLE		
LINE	BEARING	DISTANCE
L62	S64°33'57"E	37.69'
L63	S83°07'58"E	13.99'
L64	S52°54'20"E	5.84'
L65	S45°07'44"E	28.22'
L66	S66°42'39"E	25.86'
L67	S60°28'53"E	13.73'
L68	S46°09'56"E	21.40'
L69	S73°38'10"E	24.06'
L70	S69°40'05"E	15.84'
L71	S85°22'50"E	48.95'
L72	N08°05'11"E	24.96'
L73	N46°02'45"E	19.64'
L74	N77°04'23"E	21.50'
L75	S85°17'17"E	15.62'
L76	N81°55'49"E	45.79'
L77	N47°58'34"E	0.50'
L78	S37°03'47"E	17.88'
L79	S34°22'24"E	25.04'
L80	S23°16'10"E	21.85'
L81	S28°33'45"E	23.24'
L82	S25°03'38"E	19.90'
L83	S31°22'47"E	21.22'
L84	S37°16'17"E	25.35'
L85	S48°41'09"E	3.07'
L86	S30°16'58"E	5.86'
L87	S04°40'30"E	5.14'
L88	S23°52'19"W	14.29'
L89	S08°43'00"W	27.40'
L90	S07°08'28"E	31.95'
L91	S35°59'10"E	40.68'
L92	S74°23'14"E	34.34'
L93	S82°20'18"E	6.85'
L94	S57°01'41"E	22.08'
L95	S63°15'51"E	14.33'
L96	S70°26'24"E	19.23'
L97	S44°01'48"E	51.75'
L98	S37°35'33"E	26.58'
L99	S38°22'52"E	21.18'
L100	S10°44'45"E	49.01'
L101	S03°23'52"E	24.02'
L102	S13°53'10"W	2.82'
L103	S07°41'49"E	15.49'
L104	S31°32'41"W	7.65'
L105	S08°03'44"W	10.27'
L106	S20°48'48"W	7.28'
L107	S34°18'09"W	16.32'
L108	S09°22'23"W	29.51'
L109	S08°22'23"E	27.67'
L110	S10°17'44"E	21.05'
L111	S28°31'15"E	22.89'
L112	S10°06'12"E	15.44'
L113	S08°30'27"E	39.97'
L114	S46°16'13"E	21.80'
L115	S19°44'24"E	15.65'
L116	S07°48'20"E	19.89'
L117	S11°24'11"E	33.07'
L118	S01°52'44"W	22.91'
L119	S04°26'00"W	26.50'
L120	S02°03'31"E	26.73'
L121	S14°40'24"E	32.61'
L122	S34°08'50"E	31.34'

LINE TABLE		
LINE	BEARING	DISTANCE
L123	S21°16'37"W	22.54'
L124	S32°10'18"W	18.68'
L125	S53°40'23"W	16.27'
L126	S32°34'39"W	29.44'
L127	S30°00'13"W	36.56'
L128	S17°04'06"W	28.09'
L129	S13°28'23"E	19.89'
L130	S05°30'35"E	12.70'
L131	S03°42'02"W	41.05'
L132	S20°44'18"E	24.22'
L133	S14°14'33"E	19.78'
L134	S15°37'41"E	17.21'
L135	S06°37'32"W	10.19'
L136	S09°40'22"E	27.25'
L137	S23°42'50"E	20.22'
L138	S13°16'55"E	6.81'
L139	S07°39'16"E	10.00'
L140	S39°30'54"W	11.34'
L141	S01°37'44"E	28.96'
L142	S04°15'56"E	16.73'
L143	S11°44'31"E	31.36'
L144	S48°53'58"E	16.71'
L145	S15°31'21"E	18.78'
L146	S44°02'44"E	36.21'
L147	S65°51'39"E	14.05'
L148	S30°51'04"E	7.08'
L149	S15°36'29"E	21.77'
L150	S18°28'17"E	15.05'
L151	S16°28'11"E	24.06'
L152	S21°23'43"E	8.66'
L153	S19°58'20"W	4.99'
L154	S36°22'52"W	22.68'
L155	S20°15'18"W	19.64'
L156	S28°07'14"W	21.12'
L157	S00°57'58"W	30.95'
L158	S15°13'07"E	26.97'
L159	S27°42'02"E	33.24'
L160	S55°16'20"E	5.58'
L161	S13°55'43"E	5.88'
L162	S21°20'56"W	12.93'
L163	S09°58'31"E	26.75'
L164	S02°09'21"W	14.93'
L165	S13°46'44"E	46.77'
L166	S31°17'29"E	19.12'
L167	S22°56'15"E	17.85'
L168	S23°24'05"W	19.80'
L169	S03°04'42"E	24.82'
L170	S13°51'41"E	25.04'
L171	S08°24'31"E	21.27'
L172	S06°14'42"W	27.74'
L173	S27°57'49"E	35.00'
L174	S51°58'24"E	25.44'
L175	S47°01'41"E	14.01'
L176	S32°01'00"E	9.13'
L177	S15°55'23"E	16.54'
L178	S27°11'32"E	13.57'
L179	S21°56'25"E	10.78'
L180	S16°51'41"E	26.13'
L181	S11°20'15"E	26.13'
L182	S05°35'24"E	16.37'
L183	S10°37'58"E	36.59'

LINE TABLE		
LINE	BEARING	DISTANCE
L184	S12°49'28"E	29.82'
L185	S14°19'23"E	31.00'
L186	S30°28'10"E	16.54'
L187	S22°35'16"E	11.17'
L188	S12°16'09"E	26.40'
L189	S14°11'03"E	34.66'
L190	S20°22'06"E	22.91'
L191	S16°05'14"E	22.41'
L192	S13°45'47"E	34.94'
L193	S08°27'01"E	32.16'
L194	S12°42'28"E	24.54'
L195	S25°27'43"E	52.83'
L196	S29°05'53"E	32.96'
L197	S23°29'40"E	21.53'
L198	S27°31'30"E	20.34'
L199	S08°00'29"E	47.43'
L200	S04°12'42"W	25.69'
L201	S22°56'30"E	39.05'
L202	S39°51'45"E	30.71'
L203	S45°12'48"E	7.33'
L204	S01°59'48"W	27.07'
L205	S77°27'42"E	20.80'
L206	S18°21'56"E	28.57'
L207	S67°06'14"E	16.81'
L208	S33°56'04"E	6.52'
L209	S11°45'16"E	63.87'
L210	S31°21'29"E	9.53'
L211	S44°10'24"W	37.82'
L212	S16°37'43"E	38.22'
L213	S14°12'34"E	35.82'
L214	S47°27'00"E	36.39'
L215	S69°49'58"E	7.19'
L216	S24°11'04"E	3.02'
L217	S22°35'55"E	12.80'
L218	S11°31'39"W	33.15'
L219	S66°14'09"E	35.55'
L220	S23°44'55"W	21.46'
L221	S01°58'14"W	28.52'
L222	S01°25'24"E	31.30'
L223	S02°25'26"W	17.85'
L224	S03°28'58"W	20.78'
L225	S15°47'36"W	18.06'
L226	S13°06'57"W	43.00'
L227	S05°33'09"W	37.92'
L228	S17°51'41"W	19.97'
L229	S12°26'06"W	13.52'
L230	S40°27'30"W	7.86'
L231	N17°32'29"E	25.02'
L232	S69°54'34"E	11.83'
L233	S74°47'09"E	20.38'
L234	N16°42'12"E	31.19'
L235	N29°30'31"E	31.57'
L236	N86°09'10"E	30.21'
L237	N88°55'16"E	30.75'
L238	S82°20'04"E	30.26'
L239	S74°55'19"E	51.62'
L240	N57°52'39"E	26.18'
L241	N60°26'09"E	30.73'
L242	N33°06'59"E	37.11'
L243	N88°56'23"E	26.26'
L244	S76°18'31"E	30.70'

LINE TABLE		
LINE	BEARING	DISTANCE
L245	S84°06'22"E	30.32'
L246	S74°56'58"E	31.37'
L247	S77°14'23"E	30.87'
L248	S02°53'40"E	32.72'
L249	S15°11'46"W	31.45'
L250	S09°33'35"W	33.79'
L251	S08°49'08"W	23.78'
L252	S59°09'57"E	9.70'
L253	N68°12'55"E	18.97'
L254	N16°08'56"E	21.62'
L255	N24°06'32"E	31.56'
L256	N26°29'18"E	28.37'
L257	N38°23'50"E	31.50'
L258	N24°40'39"E	28.51'
L259	S84°46'07"E	30.12'
L260	S74°08'05"E	27.27'
L261	S76°08'01"E	42.29'
L262	S70°24'28"E	27.97'
L263	S54°02'36"E	30.15'
L264	S67°38'19"E	19.30'
L265	S89°47'28"E	65.31'
L266	S80°34'42"E	31.56'
L267	S79°18'51"E	28.38'
L268	S69°35'56"E	31.67'
L269	S26°19'12"E	30.13'
L270	S07°50'44"W	27.16'
L271	S06°20'35"E	10.62'
L272	S13°11'07"W	27.93'
L273	S09°22'20"W	20.88'
L274	S01°22'23"E	26.71'
L275	S03°12'56"E	10.70'
L276	N43°00'05"E	21.29'
L277	N12°14'10"E	14.44'
L278	N23°00'53"E	29.47'
L279	N44°25'18"E	16.82'
L280	N39°06'50"E	24.12'
L281	N10°09'03"E	27.53'
L282	N16°10'12"E	5.15'
L283	N67°22'25"E	7.97'
L284	N73°41'05"E	8.02'
L285	S72°10'09"E	29.76'
L286	S68°11'21"E	30.10'
L287	S67°56'46"E	32.10'
L288	S04°07'43"W	19.13'
L289	S77°21'00"E	19.96'
L290	N36°17'50"E	11.69'
L291	S53°21'05"E	17.57'
L292	S18°02'22"E	58.97'
L293	N88°08'04"E	29.86'
L294	N80°12'07"E	30.08'
L295	N45°37'52"E	26.19'
L296	S54°16'07"E	28.83'
L297	S42°23'53"E	32.24'
L298	S64°33'57"E	28.71'
L299	S83°07'58"E	16.66'
L300	S52°54'20"E	14.29'
L301	S45°07'44"E	25.16'
L302	S66°42'39"E	22.46'
L303	S60°28'53"E	18.23'
L304	S46°09'56"E	18.42'
L305	S73°38'10"E	18.81'

LINE TABLE		
LINE	BEARING	DISTANCE
L306	S69°40'05"E	13.26'
L307	S85°22'50"E	21.96'
L308	N08°05'11"E	10.03'
L309	N46°02'45"E	35.18'
L310	N77°04'23"E	32.32'
L311	S85°17'17"E	16.70'
L312	N81°55'49"E	35.36'
L313	N47°58'34"E	22.10'
L314	S32°29'46"E	24.69'
L315	S37°03'47"E	21.29'
L316	S34°22'24"E	28.05'
L317	S23°16'10"E	23.12'
L318	S28°33'45"E	22.85'
L319	S25°03'38"E	19.28'
L320	S31°22'47"E	18.55'
L321	N55°56'04"E	4.28'
L322	S31°14'41"E	11.90'
L32		

**POSSUM KINGDOM LAKE**

THE BRAZOS RIVER CONSERVATION  
AND RECLAMATION DISTRICT  
TRACT 178-3-7  
VOLUME 180, PAGE 344  
D.R.P.P.C.T.

F.E.R.C. BUFFER AREA  
3.2989 ACRES  
143,700 SQ. FT.

28.8672 ACRES  
1,257,456 SQ. FT.

J.K.P. HUGHES NO. 1 SURVEY  
ABSTRACT 2082

THE BRAZOS RIVER CONSERVATION  
AND RECLAMATION DISTRICT  
TRACT 178-3-7  
VOLUME 180, PAGE 344  
D.R.P.P.C.T.

STANDARD LAND SURVEY  
OF

**32.1661 ACRES**

SITUATED IN TRACTS 9-3-9 & 178-3-7  
AREA 3, LOTS 1-6, W-9 - W-25  
POSSUM KINGDOM LAKE  
LAFAYETTE BLACK SURVEY, ABSTRACT 40  
AND J.K.P. HUGHES NO. 1 SURVEY  
ABSTRACT 2082  
PALO PINTO COUNTY, TEXAS

**AECOM**

AECOM USA GROUP, INC.  
1200 SUMMIT AVENUE, SUITE 600  
FORT WORTH, TEXAS 76102  
WWW.AECOM.COM  
817.698.6770

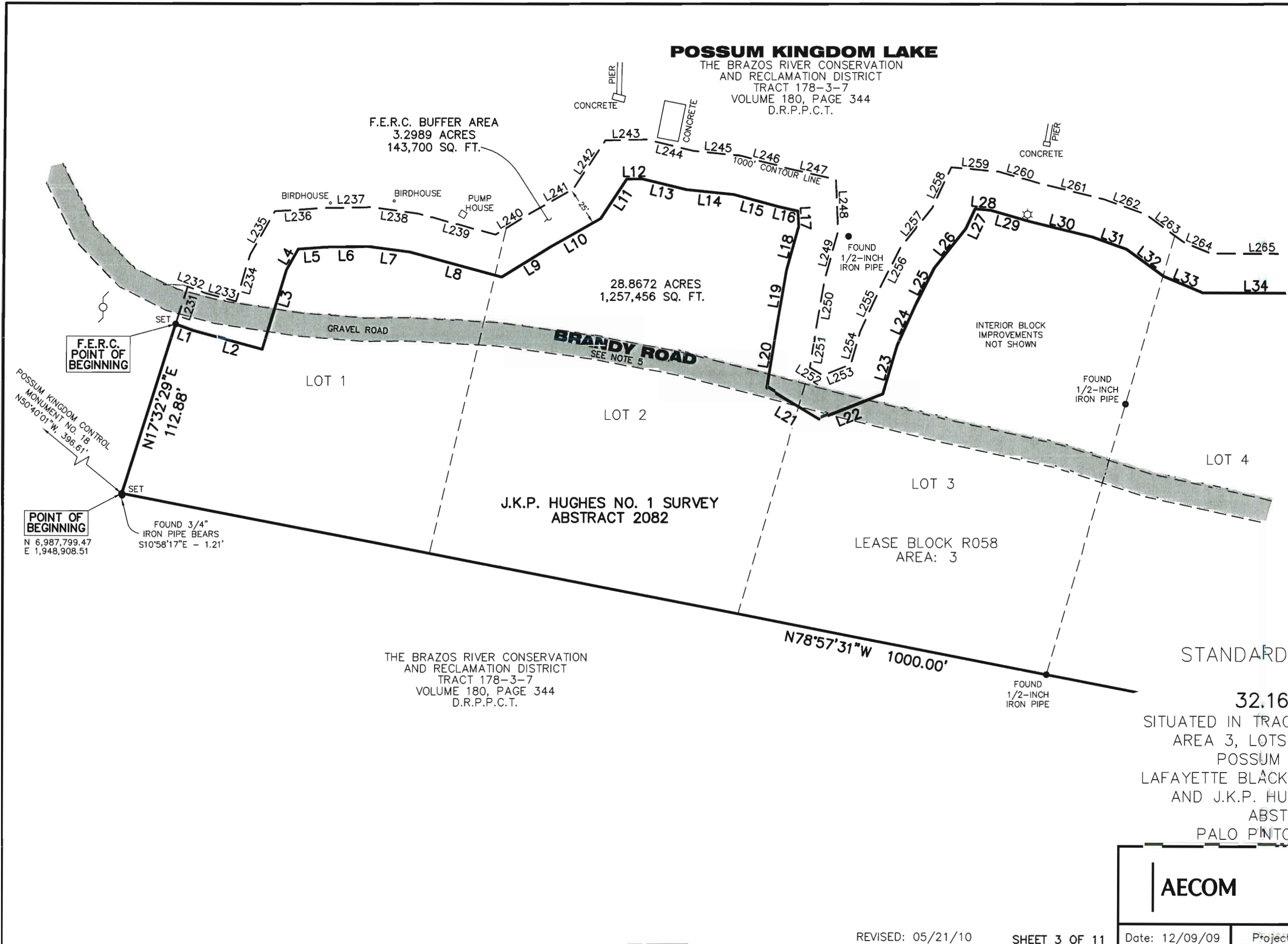
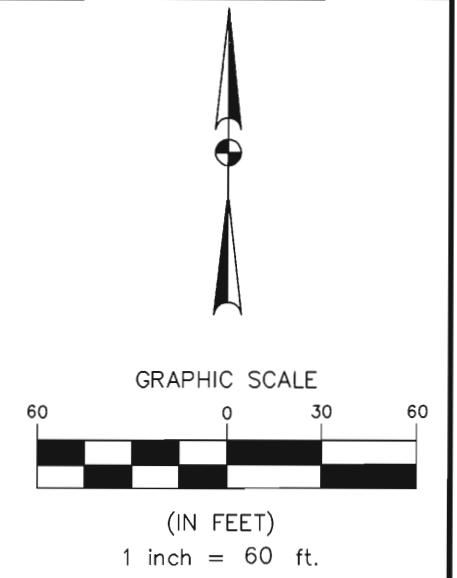
REVISED: 05/21/10

SHEET 3 OF 11

Date: 12/09/09

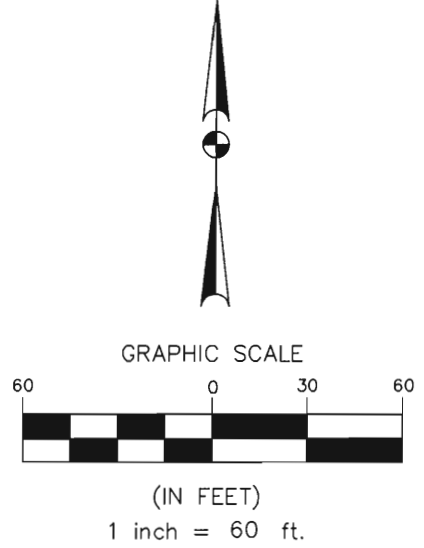
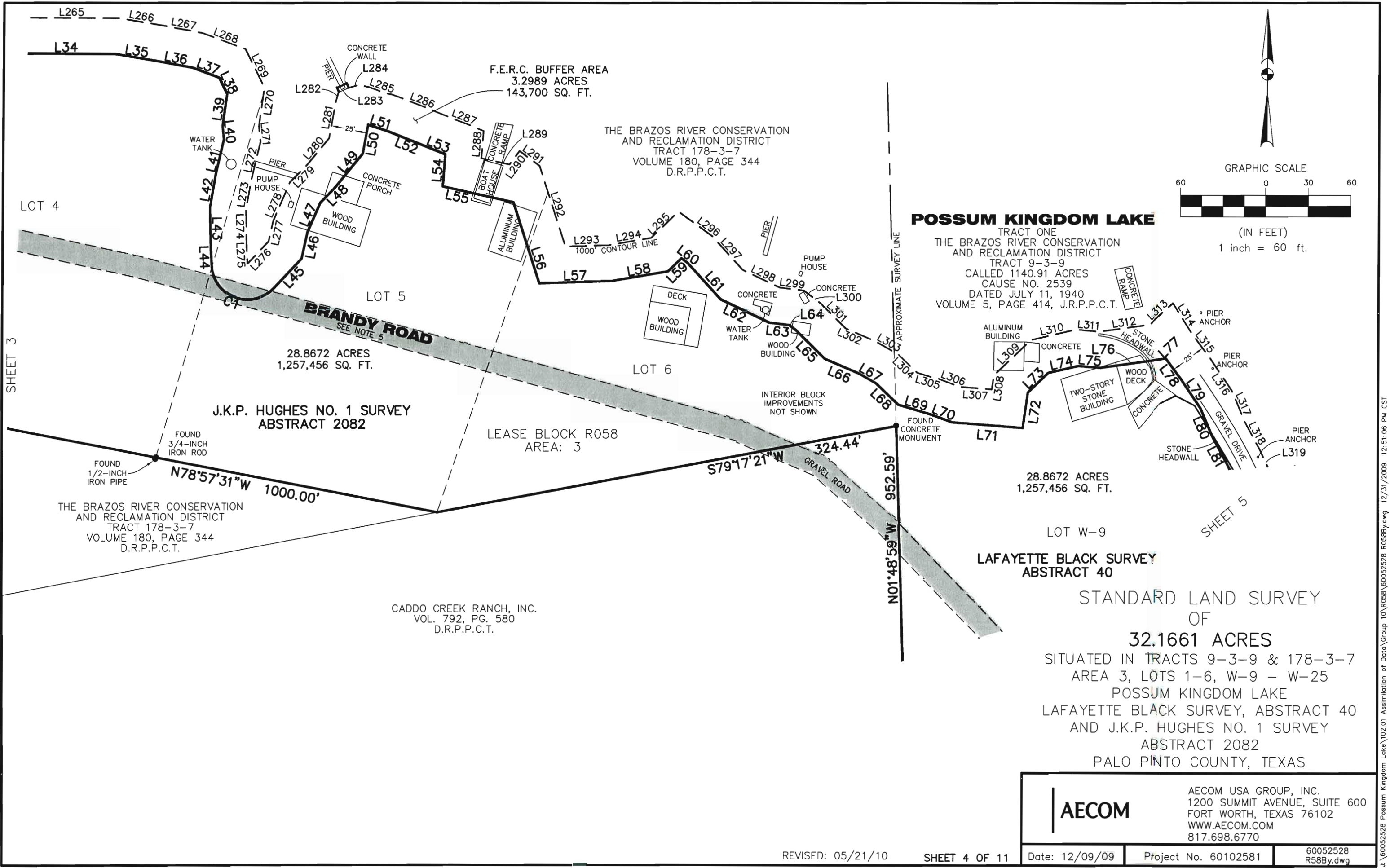
Project No. 60102581

60052528  
R58By.dwg



NO PART OR PARTS OF THIS DRAWING MAY BE REPRODUCED OR TRANSMITTED IN ANY WAY OR FORM (ELECTRONIC, MECHANICAL, PHOTOCOPYING, OR OTHERWISE) WITHOUT THE EXPRESS WRITTEN PERMISSION OF AECOM.

J:\60052528 Possum Kingdom Lake\102.01 Assimilation of Data\Group 10\R058\60052528 R058By.dwg 12/31/2009 12:51:06 PM CST



**POSSUM KINGDOM LAKE**

TRACT ONE  
 THE BRAZOS RIVER CONSERVATION  
 AND RECLAMATION DISTRICT  
 TRACT 9-3-9  
 CALLED 1140.91 ACRES  
 CAUSE NO. 2539  
 DATED JULY 11, 1940  
 VOLUME 5, PAGE 414, J.R.P.P.C.T.

F.E.R.C. BUFFER AREA  
 3.2989 ACRES  
 143,700 SQ. FT.

THE BRAZOS RIVER CONSERVATION  
 AND RECLAMATION DISTRICT  
 TRACT 178-3-7  
 VOLUME 180, PAGE 344  
 D.R.P.P.C.T.

J.K.P. HUGHES NO. 1 SURVEY  
 ABSTRACT 2082

28.8672 ACRES  
 1,257,456 SQ. FT.

LEASE BLOCK R058  
 AREA: 3

28.8672 ACRES  
 1,257,456 SQ. FT.

LAFAYETTE BLACK SURVEY  
 ABSTRACT 40

STANDARD LAND SURVEY  
 OF  
**32.1661 ACRES**  
 SITUATED IN TRACTS 9-3-9 & 178-3-7  
 AREA 3, LOTS 1-6, W-9 - W-25  
 POSSUM KINGDOM LAKE  
 LAFAYETTE BLACK SURVEY, ABSTRACT 40  
 AND J.K.P. HUGHES NO. 1 SURVEY  
 ABSTRACT 2082  
 PALO PINTO COUNTY, TEXAS

<b>AECOM</b>	AECOM USA GROUP, INC. 1200 SUMMIT AVENUE, SUITE 600 FORT WORTH, TEXAS 76102 WWW.AECOM.COM 817.698.6770	
	Date: 12/09/09	Project No. 60102581

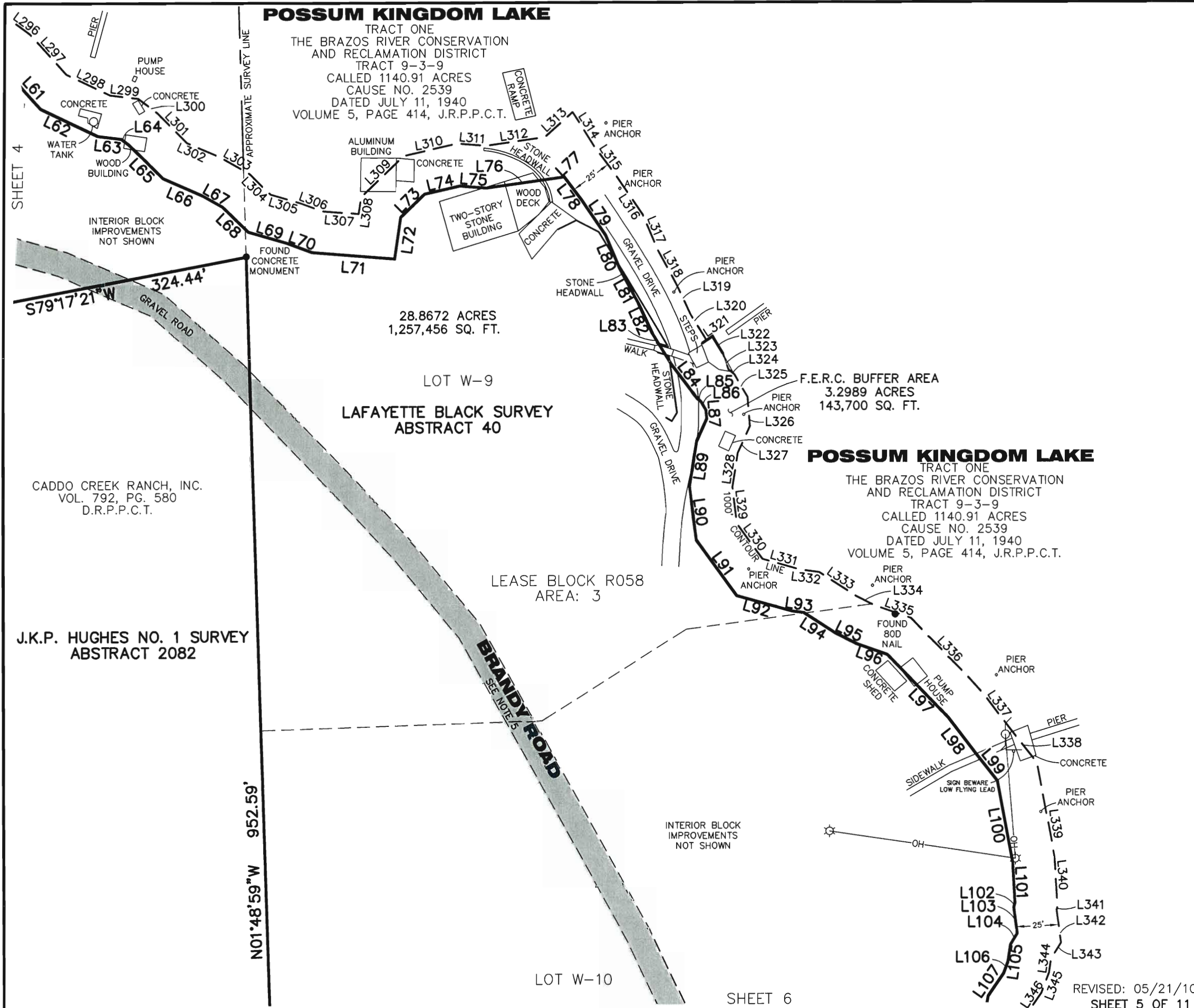
REVISED: 05/21/10

SHEET 4 OF 11

60052528  
R58By.dwg

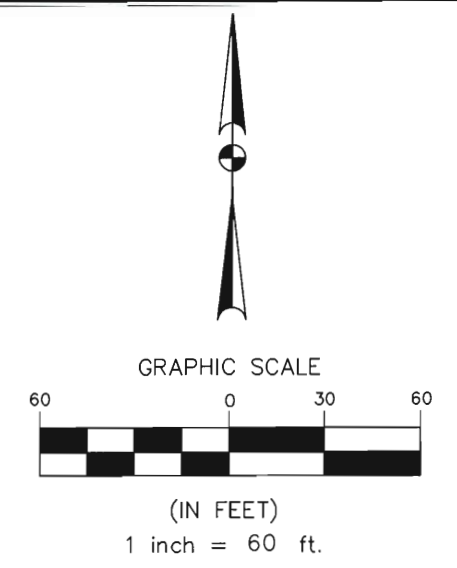
NO PART OR PARTS OF THIS DRAWING MAY BE REPRODUCED OR TRANSMITTED IN ANY WAY OR FORM (ELECTRONIC, MECHANICAL, PHOTOCOPYING, OR OTHERWISE) WITHOUT THE EXPRESS WRITTEN PERMISSION OF AECOM.

J:\60052528 Possum Kingdom Lake\102.01 Assimilation of Data\Group 10\R058\60052528 R058By.dwg 12/31/2009 12:51:06 PM GST



**POSSUM KINGDOM LAKE**  
 TRACT ONE  
 THE BRAZOS RIVER CONSERVATION  
 AND RECLAMATION DISTRICT  
 TRACT 9-3-9  
 CALLED 1140.91 ACRES  
 CAUSE NO. 2539  
 DATED JULY 11, 1940  
 VOLUME 5, PAGE 414, J.R.P.P.C.T.

**POSSUM KINGDOM LAKE**  
 TRACT ONE  
 THE BRAZOS RIVER CONSERVATION  
 AND RECLAMATION DISTRICT  
 TRACT 9-3-9  
 CALLED 1140.91 ACRES  
 CAUSE NO. 2539  
 DATED JULY 11, 1940  
 VOLUME 5, PAGE 414, J.R.P.P.C.T.



28.8672 ACRES  
 1,257,456 SQ. FT.

F.E.R.C. BUFFER AREA  
 3.2989 ACRES  
 143,700 SQ. FT.

STANDARD LAND SURVEY  
 OF  
**32.1661 ACRES**  
 SITUATED IN TRACTS 9-3-9 & 178-3-7  
 AREA 3, LOTS 1-6, W-9 - W-25  
 POSSUM KINGDOM LAKE  
 LAFAYETTE BLACK SURVEY, ABSTRACT 40  
 AND J.K.P. HUGHES NO. 1 SURVEY  
 ABSTRACT 2082  
 PALO PINTO COUNTY, TEXAS

<b>AECOM</b>	AECOM USA GROUP, INC. 1200 SUMMIT AVENUE, SUITE 600 FORT WORTH, TEXAS 76102 WWW.AECOM.COM 817.698.6770	
	Date: 12/09/09	Project No. 60102581

NO PART OR PARTS OF THIS DRAWING MAY BE REPRODUCED OR TRANSMITTED IN ANY WAY OR FORM (ELECTRONIC, MECHANICAL, PHOTOCOPYING, OR OTHERWISE) WITHOUT THE EXPRESS WRITTEN PERMISSION OF AECOM.

J:\60052528 Possum Kingdom Lake\102.01 Assimilation of Data\Group 10\RO58\60052528 RO58By.dwg 12/31/2009 12:51:06 PM CST

LOT W-10

28.8672 ACRES  
1,257,456 SQ. FT.

CADDO CREEK RANCH, INC.  
VOL. 792, PG. 580  
D.R.P.P.C.T.

LEASE BLOCK R058  
AREA: 3

LOT W-11

J.K.P. HUGHES NO. 1 SURVEY  
ABSTRACT 2082

LAFAYETTE BLACK SURVEY  
ABSTRACT 40

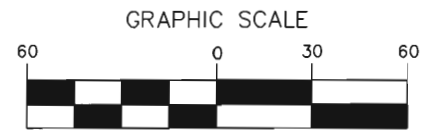
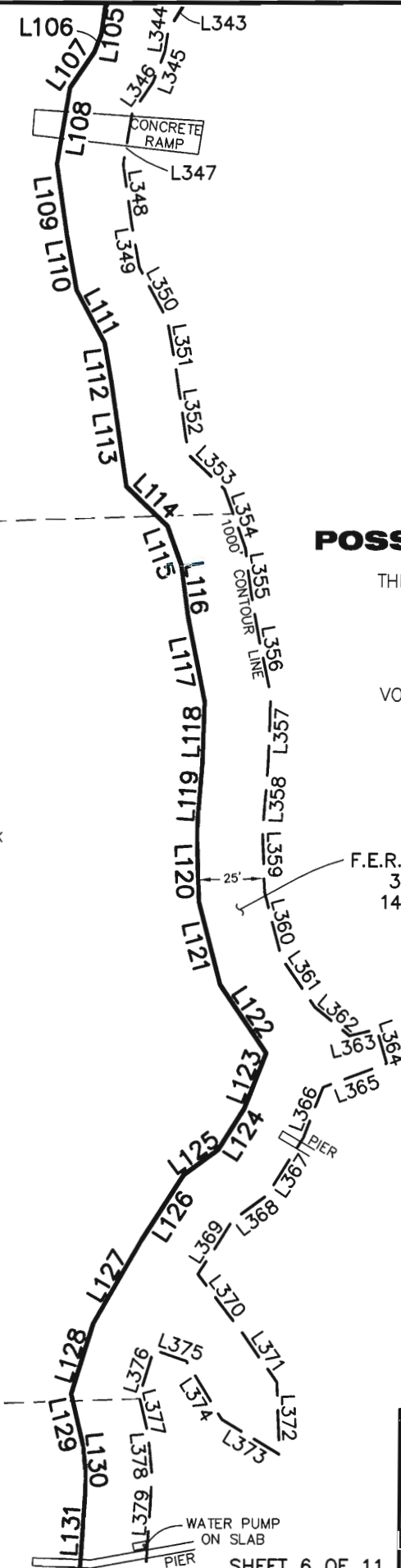
TRACT ONE  
THE BRAZOS RIVER CONSERVATION  
AND RECLAMATION DISTRICT  
TRACT 9-3-9  
CALLED 1140.91 ACRES  
CAUSE NO. 2539  
DATED JULY 11, 1940  
VOLUME 5, PAGE 414, J.R.P.P.C.T.

FOUND  
60D NAIL

S88°06'15"W 163.61'

N00°25'18"E  
147.00'

LOT W-12-N



(IN FEET)  
1 inch = 60 ft.

**POSSUM KINGDOM LAKE**

TRACT ONE  
THE BRAZOS RIVER CONSERVATION  
AND RECLAMATION DISTRICT  
TRACT 9-3-9  
CALLED 1140.91 ACRES  
CAUSE NO. 2539  
DATED JULY 11, 1940  
VOLUME 5, PAGE 414, J.R.P.P.C.T.

F.E.R.C. BUFFER AREA  
3.2989 ACRES  
143,700 SQ. FT.

STANDARD LAND SURVEY  
OF

**32.1661 ACRES**

SITUATED IN TRACTS 9-3-9 & 178-3-7  
AREA 3, LOTS 1-6, W-9 - W-25  
POSSUM KINGDOM LAKE  
LAFAYETTE BLACK SURVEY, ABSTRACT 40  
AND J.K.P. HUGHES NO. 1 SURVEY  
ABSTRACT 2082  
PALO PINTO COUNTY, TEXAS

**AECOM**

AECOM USA GROUP, INC.  
1200 SUMMIT AVENUE, SUITE 600  
FORT WORTH, TEXAS 76102  
WWW.AECOM.COM  
817.698.6770

REVISED: 05/21/10

S88°06'15"W 163.61'

N00°25'18"E 147.00'

S88°42'37"W 70.00'

N01°17'23"W 152.46'

N89°25'18"W 29.68'

N00°33'44"E 300.05'

TRACT ONE  
THE BRAZOS RIVER CONSERVATION  
AND RECLAMATION DISTRICT  
TRACT 9-3-9  
CALLED 1140.91 ACRES  
CAUSE NO. 2539  
DATED JULY 11, 1940  
VOLUME 5, PAGE 414, J.R.P.P.C.T.

CADDO CREEK RANCH, INC.  
VOL. 792, PG. 580  
D.R.P.P.C.T.

LAFAYETTE BLACK SURVEY  
ABSTRACT 40

LEASE BLOCK R058  
AREA: 3

28.8672 ACRES  
1,257,456 SQ. FT.

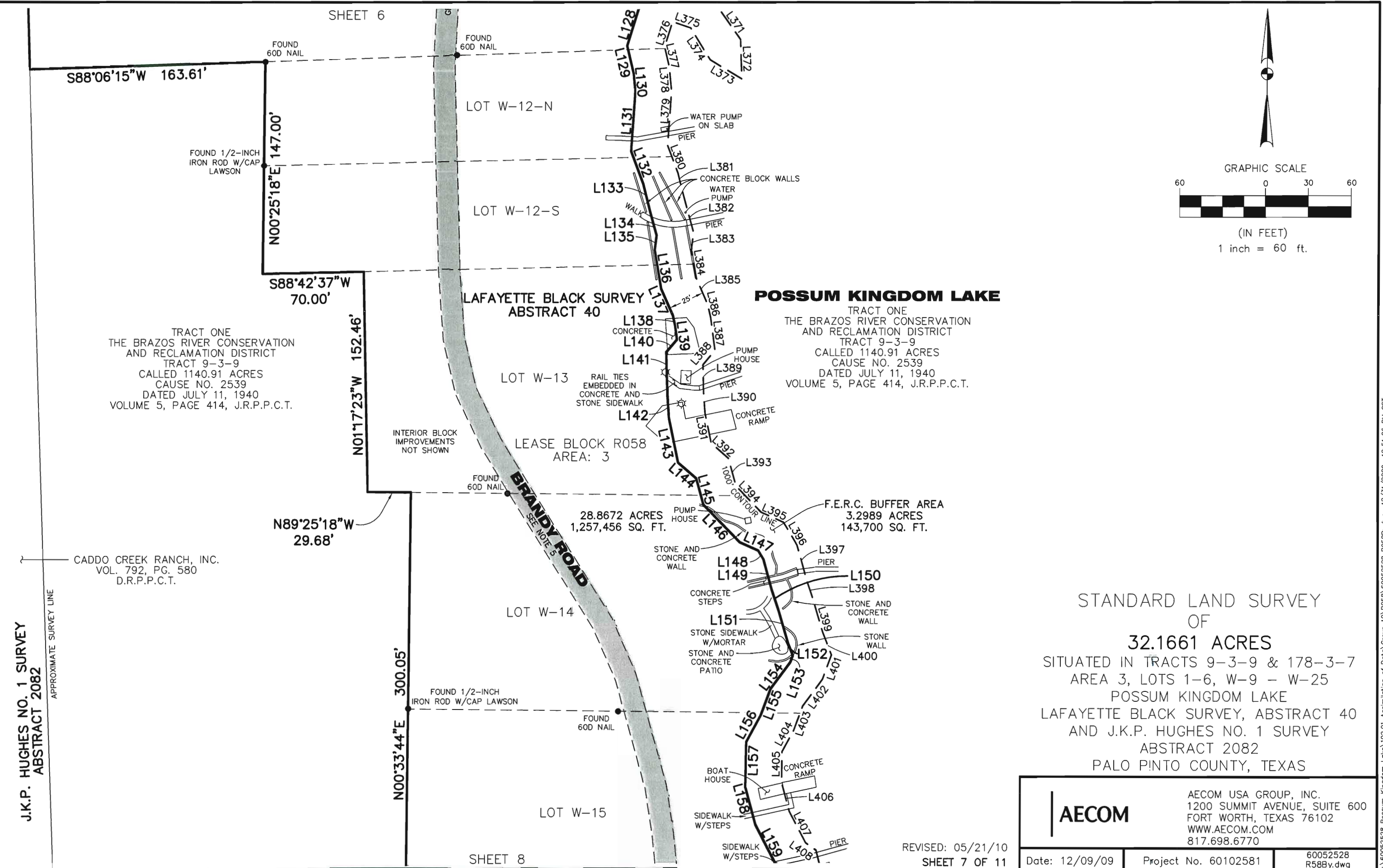
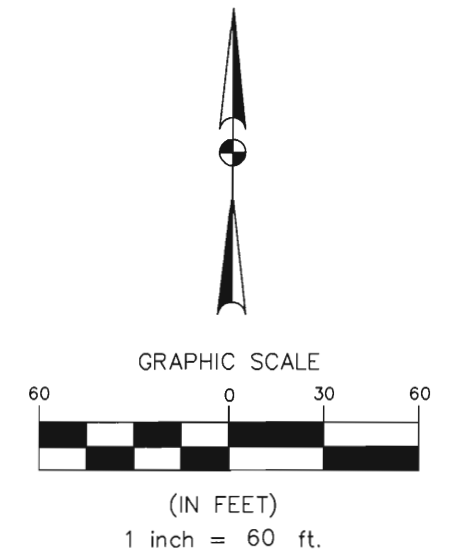
**POSSUM KINGDOM LAKE**

TRACT ONE  
THE BRAZOS RIVER CONSERVATION  
AND RECLAMATION DISTRICT  
TRACT 9-3-9  
CALLED 1140.91 ACRES  
CAUSE NO. 2539  
DATED JULY 11, 1940  
VOLUME 5, PAGE 414, J.R.P.P.C.T.

F.E.R.C. BUFFER AREA  
3.2989 ACRES  
143,700 SQ. FT.

J.K.P. HUGHES NO. 1 SURVEY  
ABSTRACT 2082

APPROXIMATE SURVEY LINE



STANDARD LAND SURVEY  
OF  
**32.1661 ACRES**  
SITUATED IN TRACTS 9-3-9 & 178-3-7  
AREA 3, LOTS 1-6, W-9 - W-25  
POSSUM KINGDOM LAKE  
LAFAYETTE BLACK SURVEY, ABSTRACT 40  
AND J.K.P. HUGHES NO. 1 SURVEY  
ABSTRACT 2082  
PALO PINTO COUNTY, TEXAS

	AECOM USA GROUP, INC. 1200 SUMMIT AVENUE, SUITE 600 FORT WORTH, TEXAS 76102 WWW.AECOM.COM 817.698.6770	
	Date: 12/09/09	Project No. 60102581
		60052528 R58By.dwg

REVISED: 05/21/10  
SHEET 7 OF 11

SHEET 7

LOT W-14

N00°33'44"E  
300.05'

FOUND 1/2-INCH  
IRON ROD W/CAP  
LAWSON

FOUND  
60D NAIL

LOT W-15

LAFAYETTE BLACK SURVEY  
ABSTRACT 40

S89°26'57"E  
20.07'

FOUND  
1/2-INCH  
IRON PIPE

FOUND 1/2-INCH  
IRON ROD W/CAP  
LAWSON

28.8672 ACRES  
1,257,456 SQ. FT.

LOT W-16

LEASE BLOCK R058  
AREA: 3

N00°33'03"E  
143.95'

TRACT ONE  
THE BRAZOS RIVER CONSERVATION  
AND RECLAMATION DISTRICT  
TRACT 9-3-9  
CALLED 1140.91 ACRES  
CAUSE NO. 2539  
DATED JULY 11, 1940  
VOLUME 5, PAGE 414, J.R.P.P.C.T.

S89°37'30"W  
50.29'

FOUND 3/8-INCH  
IRON ROD

FOUND  
60D NAIL

LOT W-17

N00°06'18"E  
150.26'

S89°37'03"W  
26.16'

N00°28'37"W  
149.80'

SHEET 9

LOT W-18

STEPS  
L151  
STONE SIDEWALK  
W/MORTAR  
STONE AND  
CONCRETE  
PATIO

STONE AND  
CONCRETE  
WALL  
STONE  
WALL  
L400

BOAT  
HOUSE

SIDEWALK  
W/STEPS

SIDEWALK  
W/STEPS

L160  
L161

WOOD  
DECK  
CONTOUR  
LINE  
L415  
L416  
L417  
L418

F.E.R.C. BUFFER AREA  
3.2989 ACRES  
143,700 SQ. FT.

STONE  
AND  
CONCRETE  
PATIO  
L175

PIER  
L427

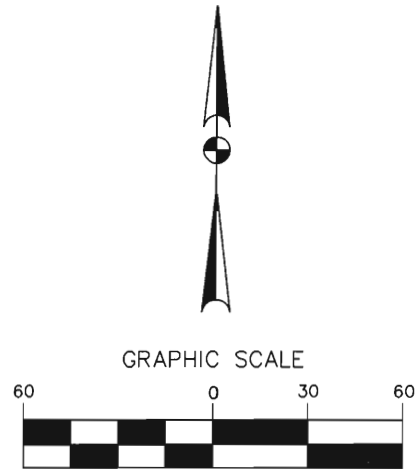
### POSSUM KINGDOM LAKE

TRACT ONE  
THE BRAZOS RIVER CONSERVATION  
AND RECLAMATION DISTRICT  
TRACT 9-3-9  
CALLED 1140.91 ACRES  
CAUSE NO. 2539  
DATED JULY 11, 1940  
VOLUME 5, PAGE 414, J.R.P.P.C.T.

BRANDY ROAD  
SEE NOTE 5

GRAVEL ROAD

INTERIOR BLOCK  
IMPROVEMENTS  
NOT SHOWN



(IN FEET)  
1 inch = 60 ft.

### STANDARD LAND SURVEY OF

### 32.1661 ACRES

SITUATED IN TRACTS 9-3-9 & 178-3-7  
AREA 3, LOTS 1-6, W-9 - W-25  
POSSUM KINGDOM LAKE  
LAFAYETTE BLACK SURVEY, ABSTRACT 40  
AND J.K.P. HUGHES NO. 1 SURVEY  
ABSTRACT 2082  
PALO PINTO COUNTY, TEXAS

## AECOM

AECOM USA GROUP, INC.  
1200 SUMMIT AVENUE, SUITE 600  
FORT WORTH, TEXAS 76102  
WWW.AECOM.COM  
817.698.6770

REVISED: 05/21/10  
SHEET 8 OF 11

Date: 12/09/09

Project No. 60102581

60052528  
R58By.dwg



LOT W-17 SHEET 8

N00°06'18"E  
150.26'

S89°37'03"W  
26.16'

N00°28'37"W  
149.80'

S89°38'26"W  
56.34'

N00°21'34"W  
155.29'

S89°38'26"W  
42.68'

TRACT ONE  
THE BRAZOS RIVER CONSERVATION  
AND RECLAMATION DISTRICT  
TRACT 9-3-9  
CALLED 1140.91 ACRES  
CAUSE NO. 2539  
DATED JULY 11, 1940  
VOLUME 5, PAGE 414, J.R.P.P.C.T.

BRANDY ROAD  
SEE NOTE 5

GRAVEL ROAD

N00°21'34"W  
70.65'

N07°25'05"W  
4.69'

N00°21'34"W  
58.19'

S89°38'26"W  
7.21'

N07°25'05"W  
30.86'

FOUND 3/8-INCH IRON ROD

FOUND 3/8-INCH IRON ROD

LOT W-18

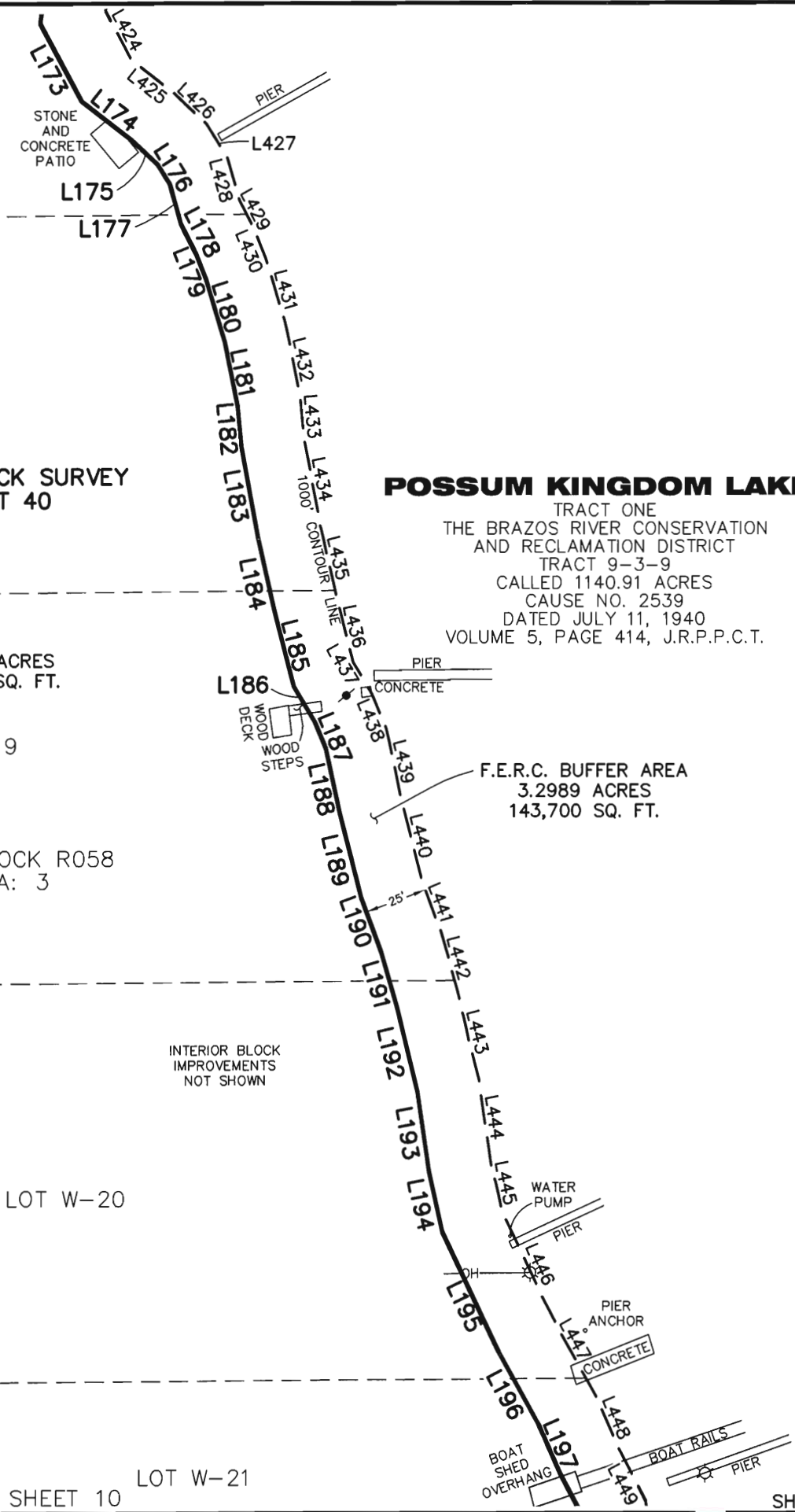
LAFAYETTE BLACK SURVEY  
ABSTRACT 40

28.8672 ACRES  
1,257,456 SQ. FT.

LOT W-19

LEASE BLOCK R058  
AREA: 3

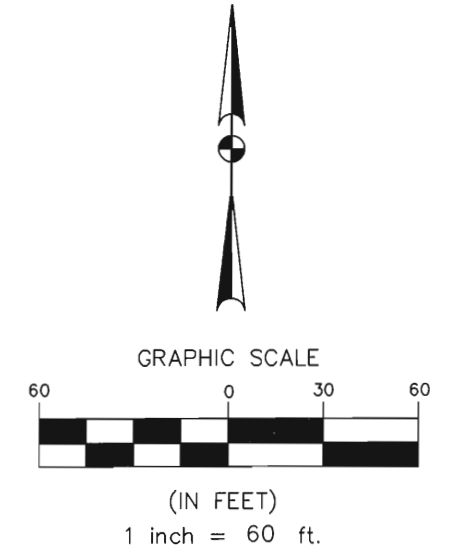
INTERIOR BLOCK  
IMPROVEMENTS  
NOT SHOWN



**POSSUM KINGDOM LAKE**

TRACT ONE  
THE BRAZOS RIVER CONSERVATION  
AND RECLAMATION DISTRICT  
TRACT 9-3-9  
CALLED 1140.91 ACRES  
CAUSE NO. 2539  
DATED JULY 11, 1940  
VOLUME 5, PAGE 414, J.R.P.P.C.T.

F.E.R.C. BUFFER AREA  
3.2989 ACRES  
143,700 SQ. FT.



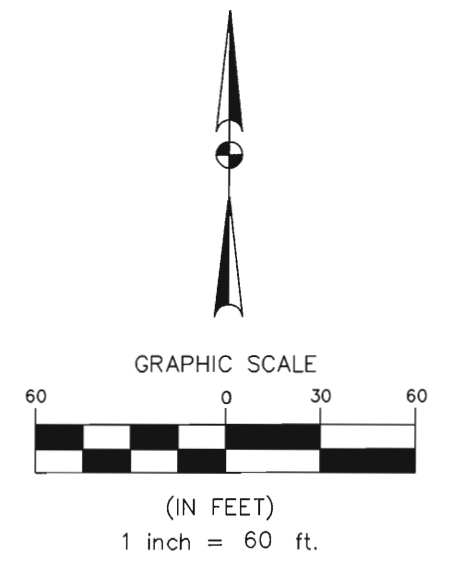
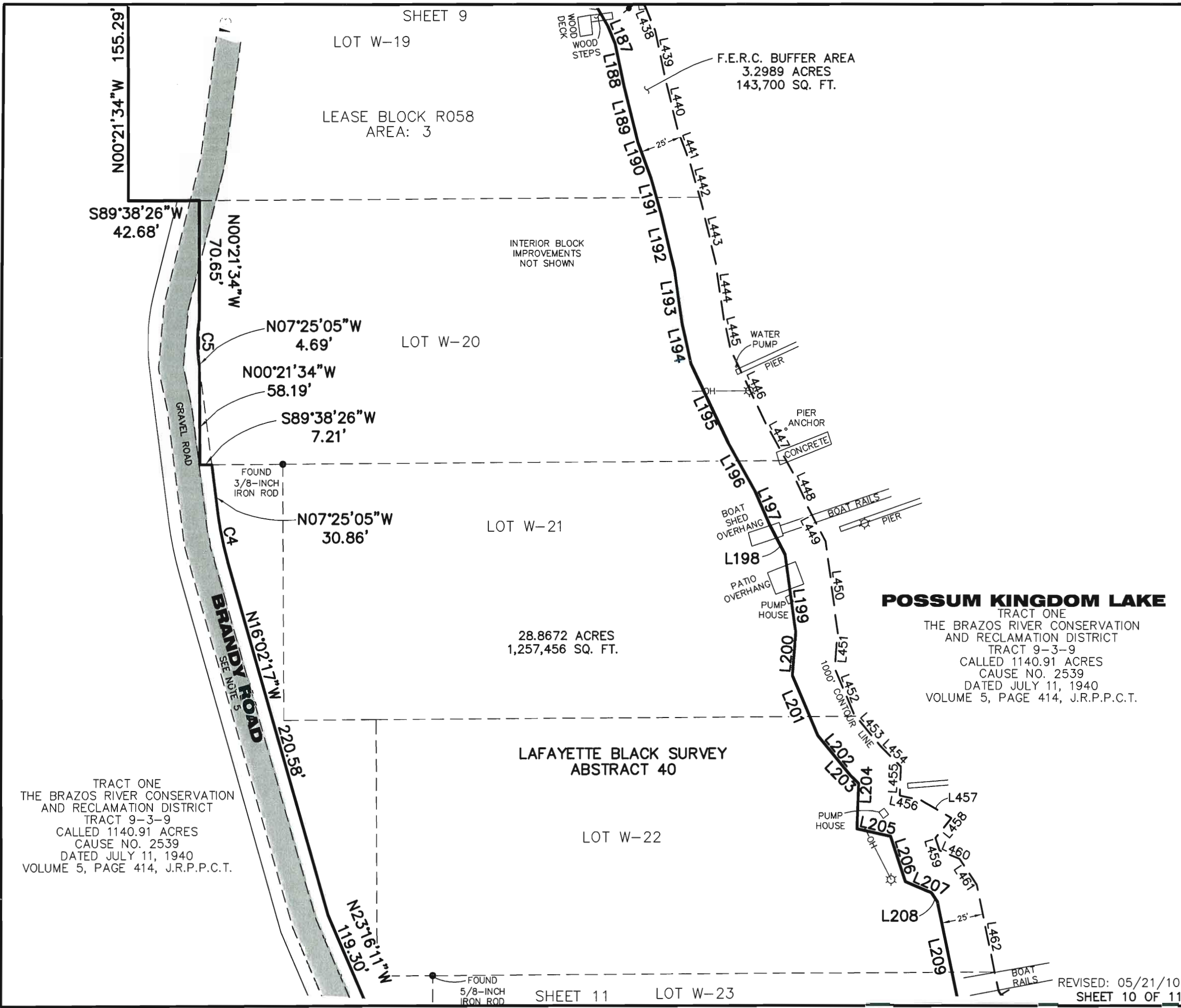
STANDARD LAND SURVEY  
OF  
**32.1661 ACRES**  
SITUATED IN TRACTS 9-3-9 & 178-3-7  
AREA 3, LOTS 1-6, W-9 - W-25  
POSSUM KINGDOM LAKE  
LAFAYETTE BLACK SURVEY, ABSTRACT 40  
AND J.K.P. HUGHES NO. 1 SURVEY  
ABSTRACT 2082  
PALO PINTO COUNTY, TEXAS

<b>AECOM</b>	AECOM USA GROUP, INC. 1200 SUMMIT AVENUE, SUITE 600 FORT WORTH, TEXAS 76102 WWW.AECOM.COM 817.698.6770	
	Date: 12/09/09	Project No. 60102581
		60052528 R58By.dwg

REVISED: 05/21/10

SHEET 10 LOT W-21

SHEET 9 OF 11



TRACT ONE  
THE BRAZOS RIVER CONSERVATION  
AND RECLAMATION DISTRICT  
TRACT 9-3-9  
CALLED 1140.91 ACRES  
CAUSE NO. 2539  
DATED JULY 11, 1940  
VOLUME 5, PAGE 414, J.R.P.P.C.T.

STANDARD LAND SURVEY  
OF  
**32.1661 ACRES**  
SITUATED IN TRACTS 9-3-9 & 178-3-7  
AREA 3, LOTS 1-6, W-9 - W-25  
POSSUM KINGDOM LAKE  
LAFAYETTE BLACK SURVEY, ABSTRACT 40  
AND J.K.P. HUGHES NO. 1 SURVEY  
ABSTRACT 2082  
PALO PINTO COUNTY, TEXAS

<b>AECOM</b>	AECOM USA GROUP, INC. 1200 SUMMIT AVENUE, SUITE 600 FORT WORTH, TEXAS 76102 WWW.AECOM.COM 817.698.6770	
	Date: 12/09/09	Project No. 60102581
		60052528 R58By.dwg

NO PART OR PARTS OF THIS DRAWING MAY BE REPRODUCED OR TRANSMITTED IN ANY WAY OR FORM (ELECTRONIC, MECHANICAL, PHOTOCOPYING, OR OTHERWISE) WITHOUT THE EXPRESS WRITTEN PERMISSION OF AECOM.

J:\60052528 Possum Kingdom Lake\102.01 Assimilation of Data\Group 10\R058\60052528 R058By.dwg 12/31/2009 12:51:06 PM CST

