

VICINITY MAP  
NOT TO SCALE

CURVE TABLE					
CURVE	LENGTH	DELTA	RADIUS	CHORD BEARING	CHORD
C1	30.39	69°38'23"	25.00	N68°27'10"E	28.55'

NOTES:

- BEARINGS AND COORDINATES SHOWN HEREON ARE BASED ON THE NORTH AMERICAN DATUM OF 1983, TEXAS COORDINATE SYSTEM, NORTH CENTRAL ZONE (4202).
- 1,000-FOOT CONTOUR ELEVATION OF POSSUM KINGDOM LAKE IS DETERMINED BASED ON MEASUREMENTS FROM THE TOP OF THE EXISTING SPILLWAY CREST GATES AT THE MORRIS SHEPPARD DAM BEING AT ELEVATION 1,000- FEET ABOVE MEAN SEA LEVEL AS NOTED IN FEDERAL POWER COMMISSION REPORT PROJECT NO. 1490 - TEXAS ON JUNE 2, 1938.
- SET = 5/8" IRON ROD W/CAP STAMPED "AECOM" SET; D.R.P.P.C.T.= DEED RECORDS, PALO PINTO COUNTY, TEXAS; P.R.P.P.C.T.= PLAT RECORDS, PALO PINTO COUNTY, TEXAS; F.E.R.C.= FEDERAL ENERGY REGULATORY COMMISSION; J.R.P.P.C.T.= JUDGEMENT RECORDS, PALO PINTO COUNTY, TEXAS.
- METES AND BOUNDS DESCRIPTIONS TO ACCOMPANY THIS SURVEY.

SURVEYORS CERTIFICATE

TO: BRAZOS RIVER AUTHORITY, PATTERSON PK LAND PARTNERSHIP, LTD., AND HERITAGE TITLE COMPANY OF AUSTIN, INC.

I, MUNIR ODHWANI, A REGISTERED PROFESSIONAL LAND SURVEYOR IN THE STATE OF TEXAS, REGISTRATION NUMBER 5996, HEREBY STATE THAT A SURVEY OF THE REAL PROPERTY DESCRIBED IN SEPARATE LEGAL DESCRIPTION AS NOTED HEREON, WAS ACTUALLY MADE UPON THE GROUND UNDER MY DIRECTION AND SUPERVISION, AND THAT TO THE BEST OF MY PROFESSIONAL KNOWLEDGE AND BELIEF, THE INFORMATION SHOWN HEREON IS CORRECT AS DETERMINED BY SAID SURVEY.

THIS SURVEY SUBSTANTIALLY COMPLIES WITH THE CURRENT TEXAS SOCIETY OF PROFESSIONAL SURVEYORS STANDARDS AND SPECIFICATIONS FOR A CATEGORY IB, CONDITION II SURVEY.

*Munir Odhwani*

MUNIR ODHWANI  
REGISTERED PROFESSIONAL LAND SURVEYOR  
TEXAS REGISTRATION NO. 5996

DATE: FEBRUARY 12, 2010



LINE TABLE		
LINE	BEARING	DISTANCE
L1	N52°54'36"W	21.26'
L2	N26°20'56"W	2.31'
L3	N22°53'42"E	16.64'
L4	N13°34'01"E	14.88'
L5	N27°15'09"E	12.04'
L6	N57°13'57"E	30.56'
L7	N05°26'02"E	34.14'
L8	N06°09'33"E	24.48'
L9	N03°46'01"W	5.31'
L10	S88°55'22"E	5.61'
L11	N65°08'31"E	24.77'
L12	S81°35'07"E	1.19'
L13	S84°44'41"E	11.98'
L14	S81°05'10"E	32.04'
L15	N65°41'53"E	32.12'
L16	N19°46'29"E	10.28'
L17	N75°52'43"E	9.09'
L18	N25°59'32"E	8.91'
L19	N69°36'46"E	13.45'
L20	N57°55'57"E	7.05'
L21	N72°15'36"E	21.43'
L22	N39°59'06"E	25.38'
L23	N25°07'57"E	23.70'
L24	S81°05'43"E	6.45'
L25	N75°14'48"E	29.45'
L26	N43°55'57"E	38.91'
L27	N13°34'49"E	5.52'
L28	S84°13'19"E	1.42'
L29	S11°51'20"E	9.05'
L30	S62°19'12"E	48.29'
L31	N87°36'29"E	44.10'
L32	N65°20'08"E	61.42'
L33	N09°13'43"E	40.35'
L34	N25°43'25"E	31.50'
L35	N38°58'53"E	19.14'
L36	N36°31'49"E	18.46'
L37	N59°57'53"E	38.03'
L38	N44°53'52"E	29.40'
L39	N43°31'57"E	29.99'
L40	N41°43'19"E	19.07'

LINE TABLE		
LINE	BEARING	DISTANCE
L41	N33°37'59"E	5.82'
L42	N62°28'18"E	25.21'
L43	N54°45'28"E	9.08'
L44	S85°51'14"E	19.77'
L45	N74°02'51"E	34.41'
L46	N58°09'06"E	42.53'
L47	N26°59'39"E	6.10'
L48	S33°50'56"E	8.20'
L49	S68°14'04"E	32.13'
L50	N77°04'11"E	31.91'
L51	S75°21'35"W	31.84'
L52	N52°54'36"W	7.44'
L53	N26°20'56"W	19.67'
L54	N22°53'42"E	26.06'
L55	N13°34'01"E	15.84'
L56	N27°15'09"E	21.73'
L57	N57°13'57"E	25.12'
L58	N05°26'02"E	22.15'
L59	N06°09'33"E	22.46'
L60	N03°46'01"W	12.60'
L61	N37°43'13"E	13.09'
L62	N51°08'29"E	11.39'
L63	S88°23'34"E	9.13'
L64	N65°08'31"E	26.36'
L65	S81°35'07"E	7.97'
L66	S84°44'41"E	12.09'
L67	S81°05'10"E	25.38'
L68	N65°41'53"E	14.07'
L69	N19°46'29"E	13.01'
L70	N75°52'43"E	10.78'
L71	N25°59'32"E	7.29'
L72	N69°36'46"E	20.89'
L73	N57°55'57"E	7.64'
L74	N72°15'36"E	17.34'
L75	N39°59'06"E	14.88'
L76	N25°07'57"E	27.21'
L77	N42°09'01"E	13.77'
L78	S81°05'43"E	15.78'
L79	N75°14'48"E	17.21'
L80	N43°55'57"E	25.13'

LINE TABLE		
LINE	BEARING	DISTANCE
L81	N13°34'49"E	13.96'
L82	N74°09'06"E	17.70'
L83	S84°13'19"E	25.95'
L84	S11°51'20"E	15.55'
L85	S62°19'12"E	29.79'
L86	N87°36'29"E	32.47'
L87	N65°20'08"E	43.18'
L88	N09°13'43"E	30.65'
L89	N25°43'25"E	38.03'
L90	N38°58'53"E	21.51'
L91	N36°31'49"E	23.11'
L92	N59°57'53"E	39.91'
L93	N44°53'52"E	25.79'
L94	N43°31'57"E	29.30'
L95	N41°43'19"E	11.34'
L96	N14°18'55"W	13.85'
L97	N33°13'37"E	16.06'
L98	S74°48'05"E	9.62'
L99	S52°38'34"E	18.39'
L100	N33°37'59"E	12.24'
L101	N62°28'18"E	29.95'
L102	N54°45'28"E	16.34'
L103	S85°51'14"E	24.29'
L104	N74°02'51"E	26.49'
L105	N58°09'06"E	32.07'
L106	N26°59'39"E	23.94'
L107	N57°33'40"E	12.37'
L108	S47°59'48"E	12.85'
L109	S33°50'56"E	21.62'
L110	S68°14'04"E	16.59'
L111	N77°04'11"E	14.48'
L112	S33°58'15"E	26.79'

LEGEND

- = LEASE CORNER MARKER  
"AS NOTED"

ACREAGE TABLE	
LEASE BLOCK:	3.0431 ACRES
F.E.R.C. BUFFER AREA:	0.6602 OF ONE ACRE
SURVEY BLOCK:	3.7033 ACRES TOTAL

STANDARD LAND SURVEY  
OF  
3.7033 ACRES  
SITUATED IN TRACT 11-2-46  
AREA 2, LOTS 38-42  
POSSUM KINGDOM LAKE  
J.G. LOVE SURVEY,  
ABSTRACT 1041  
PALO PINTO COUNTY, TEXAS

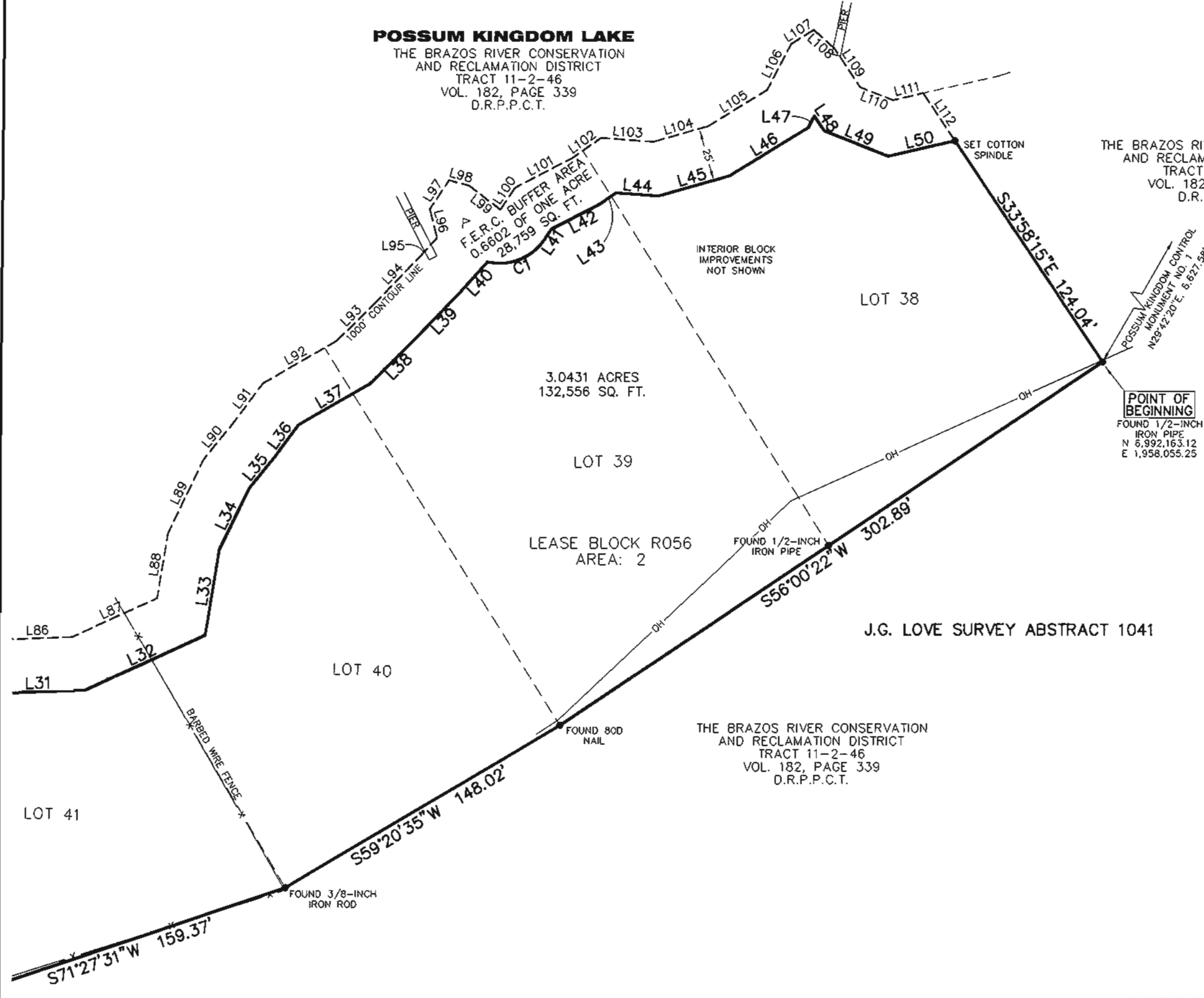
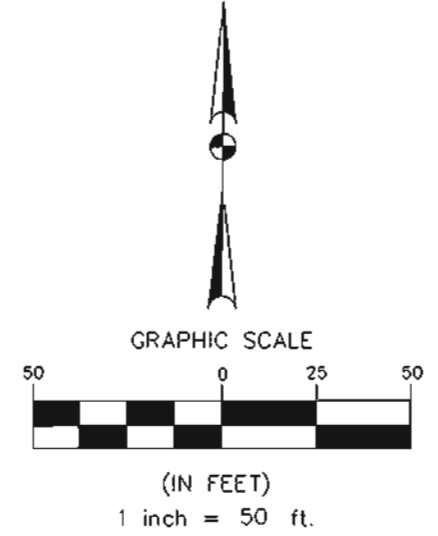
**AECOM**

AECOM USA GROUP, INC.  
1200 SUMMIT AVENUE, SUITE 600  
FORT WORTH, TEXAS 76102  
WWW.AECOM.COM  
817.698.6770

**POSSUM KINGDOM LAKE**

THE BRAZOS RIVER CONSERVATION  
AND RECLAMATION DISTRICT  
TRACT 11-2-46  
VOL. 182, PAGE 339  
D.R.P.P.C.T.

THE BRAZOS RIVER CONSERVATION  
AND RECLAMATION DISTRICT  
TRACT 11-2-46  
VOL. 182, PAGE 339  
D.R.P.P.C.T.



STANDARD LAND SURVEY  
OF  
3.7033 ACRES  
SITUATED IN TRACT 11-2-46  
AREA 2, LOTS 38-42  
POSSUM KINGDOM LAKE  
J.G. LOVE SURVEY,  
ABSTRACT 1041  
PALO PINTO COUNTY, TEXAS

<b>AECOM</b>	AECOM USA GROUP, INC. 1200 SUMMIT AVENUE, SUITE 600 FORT WORTH, TEXAS 76102 WWW.AECOM.COM 817.698.6770	
	Date: 12/16/09	Project No. 60052528.103

**POSSUM KINGDOM LAKE**

THE BRAZOS RIVER CONSERVATION  
AND RECLAMATION DISTRICT  
TRACT 11-2-46  
VOL. 182, PAGE 339  
D.R.P.P.C.T.

F.E.R.C. BUFFER AREA  
0.6602 OF ONE ACRE  
28,759 SQ. FT.

3.0431 ACRES  
132,556 SQ. FT.

LEASE BLOCK R056  
AREA: 2

THE BRAZOS RIVER CONSERVATION  
AND RECLAMATION DISTRICT  
TRACT 11-2-46  
VOL. 182, PAGE 339  
D.R.P.P.C.T.

INTERIOR BLOCK  
IMPROVEMENTS  
NOT SHOWN

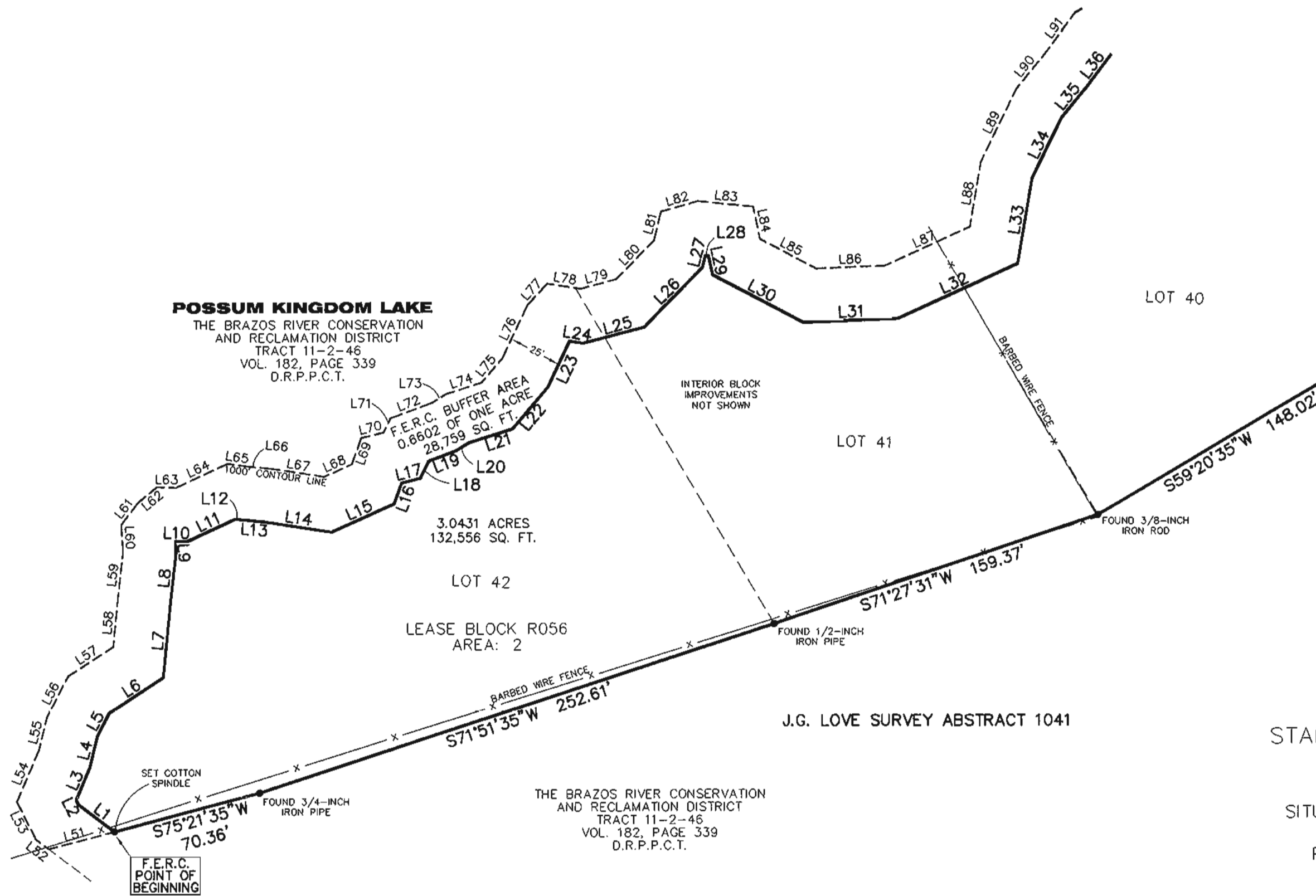
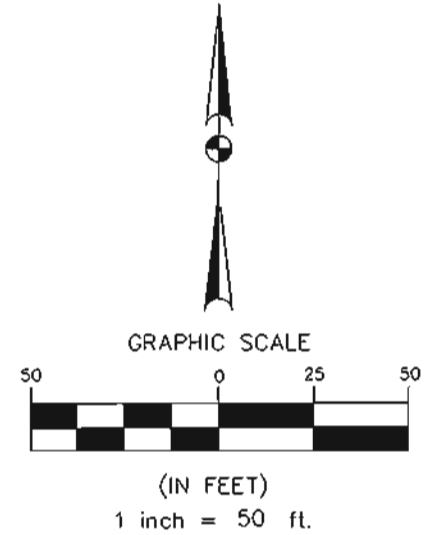
LOT 40

LOT 41

LOT 42

J.G. LOVE SURVEY ABSTRACT 1041

STANDARD LAND SURVEY  
OF  
3.7033 ACRES  
SITUATED IN TRACT 11-2-46  
AREA 2, LOTS 38-42  
POSSUM KINGDOM LAKE  
J.G. LOVE SURVEY,  
ABSTRACT 1041  
PALO PINTO COUNTY, TEXAS



**AECOM**

AECOM USA GROUP, INC.  
1200 SUMMIT AVENUE, SUITE 600  
FORT WORTH, TEXAS 76102  
WWW.AECOM.COM  
817.698.6770

SHEET 3 OF 3

Date: 12/16/09 Project No. 60052528.103

60052528  
R56By.dwg