

VICINITY MAP
NOT TO SCALE

- LEGEND**
- = LEASE CORNER MARKER
"AS NOTED"
 - OH = OVERHEAD LINES
 - = POWER POLE

ACREAGE TABLE
 LEASE BLOCK: 3.3024 ACRES
 F.E.R.C. BUFFER AREA: 0.7263 OF ONE ACRE
 SURVEY BLOCK: 4.0287 ACRES TOTAL

NOTES:

- 1) BEARINGS AND COORDINATES SHOWN HEREON ARE BASED ON THE NORTH AMERICAN DATUM OF 1983, TEXAS COORDINATE SYSTEM, NORTH CENTRAL ZONE (4202).
- 2) 1,000-FOOT CONTOUR ELEVATION OF POSSUM KINGDOM LAKE IS DETERMINED BASED ON MEASUREMENTS FROM THE TOP OF THE EXISTING SPILLWAY CREST GATES AT THE MORRIS SHEPPARD DAM BEING AT ELEVATION 1,000- FEET ABOVE MEAN SEA LEVEL AS NOTED IN FEDERAL POWER COMMISSION REPORT PROJECT NO. 1490 - TEXAS ON JUNE 2, 1938.
- 3) SET = 5/8" IRON ROD W/CAP STAMPED "AECOM" SET; D.R.P.P.C.T.= DEED RECORDS, PALO PINTO COUNTY, TEXAS; P.R.P.P.C.T.= PLAT RECORDS, PALO PINTO COUNTY, TEXAS; F.E.R.C.= FEDERAL ENERGY REGULATORY COMMISSION; J.R.P.P.C.T.= JUDGEMENT RECORDS, PALO PINTO COUNTY, TEXAS.
- 4) METES AND BOUNDS DESCRIPTIONS TO ACCOMPANY THIS SURVEY.

SURVEYORS CERTIFICATE

TO: BRAZOS RIVER AUTHORITY, PATTERSON PK LAND PARTNERSHIP, LTD., AND HERITAGE TITLE COMPANY OF AUSTIN, INC.

I, MUNIR ODHWANI, A REGISTERED PROFESSIONAL LAND SURVEYOR IN THE STATE OF TEXAS, REGISTRATION NUMBER 5996, HEREBY STATE THAT A SURVEY OF THE REAL PROPERTY DESCRIBED IN SEPARATE LEGAL DESCRIPTION AS NOTED HEREON, WAS ACTUALLY MADE UPON THE GROUND UNDER MY DIRECTION AND SUPERVISION, AND THAT TO THE BEST OF MY PROFESSIONAL KNOWLEDGE AND BELIEF, THE INFORMATION SHOWN HEREON IS CORRECT AS DETERMINED BY SAID SURVEY.

THIS SURVEY SUBSTANTIALLY COMPLIES WITH THE CURRENT TEXAS SOCIETY OF PROFESSIONAL SURVEYORS STANDARDS AND SPECIFICATIONS FOR A CATEGORY 1B, CONDITION II SURVEY.

Munir Odhwani

MUNIR ODHWANI
 REGISTERED PROFESSIONAL LAND SURVEYOR
 TEXAS REGISTRATION NO. 5996

DATE: FEBRUARY 12, 2010



LINE TABLE		
LINE	BEARING	DISTANCE
L1	N54°25'29"W	35.73'
L2	N51°40'49"W	27.55'
L3	N26°14'19"W	45.34'
L4	N36°27'23"W	16.13'
L5	N31°20'18"W	17.32'
L6	N41°44'44"W	23.06'
L7	N49°22'37"W	14.11'
L8	N31°56'03"W	17.81'
L9	N35°59'41"W	19.70'
L10	N31°53'38"W	22.14'
L11	N45°13'45"W	21.77'
L12	N41°36'51"W	17.61'
L13	N31°38'24"W	17.58'
L14	N31°46'46"W	24.34'
L15	N35°40'09"W	21.35'
L16	N24°35'26"W	11.42'
L17	N03°34'13"W	11.79'
L18	N24°13'27"E	12.64'
L19	N35°45'16"E	21.77'
L20	N60°34'12"E	23.62'
L21	N61°36'47"E	27.09'
L22	N48°01'05"E	27.39'
L23	N45°43'00"E	26.51'
L24	N75°52'31"W	23.98'
L25	N70°27'11"W	24.33'
L26	N55°18'02"W	21.80'
L27	N54°17'41"W	25.59'
L28	N68°45'35"W	33.78'
L29	N88°53'48"W	32.96'
L30	S84°09'57"W	26.96'
L31	S81°37'11"W	36.73'

LINE TABLE		
LINE	BEARING	DISTANCE
L32	S79°02'43"W	25.85'
L33	S89°14'16"W	22.30'
L34	N72°25'42"W	18.72'
L35	N56°35'46"W	23.54'
L36	N53°12'51"W	21.99'
L37	N37°35'02"W	44.05'
L38	N21°04'15"W	31.02'
L39	N03°27'32"W	16.07'
L40	N06°55'06"E	15.19'
L41	N26°00'46"E	14.13'
L42	N33°25'42"E	28.68'
L43	N19°50'19"E	23.60'
L44	N24°42'29"E	20.39'
L45	N38°15'04"E	18.20'
L46	N35°33'27"E	27.42'
L47	N36°15'39"E	40.15'
L48	N49°49'45"E	27.38'
L49	N13°15'10"E	32.67'
L50	N00°35'44"E	8.85'
L51	S56°32'56"W	26.77'
L52	N54°25'29"W	26.75'
L53	N51°40'49"W	33.80'
L54	N26°14'19"W	48.75'
L55	N36°27'23"W	15.02'
L56	N31°20'18"W	16.16'
L57	N41°44'44"W	19.12'
L58	N49°22'37"W	16.28'
L59	N31°56'03"W	20.76'
L60	N35°59'41"W	19.71'
L61	N31°53'38"W	20.11'
L62	N45°13'45"W	19.63'

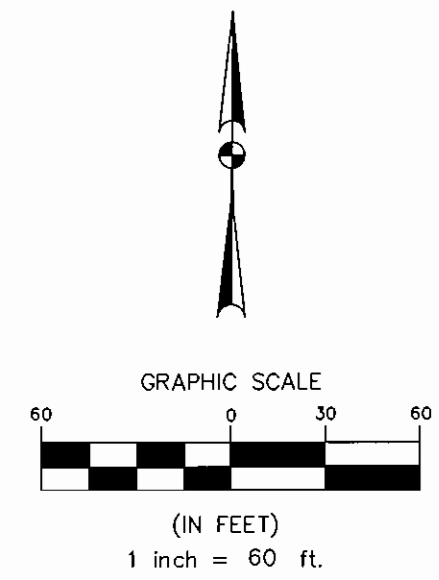
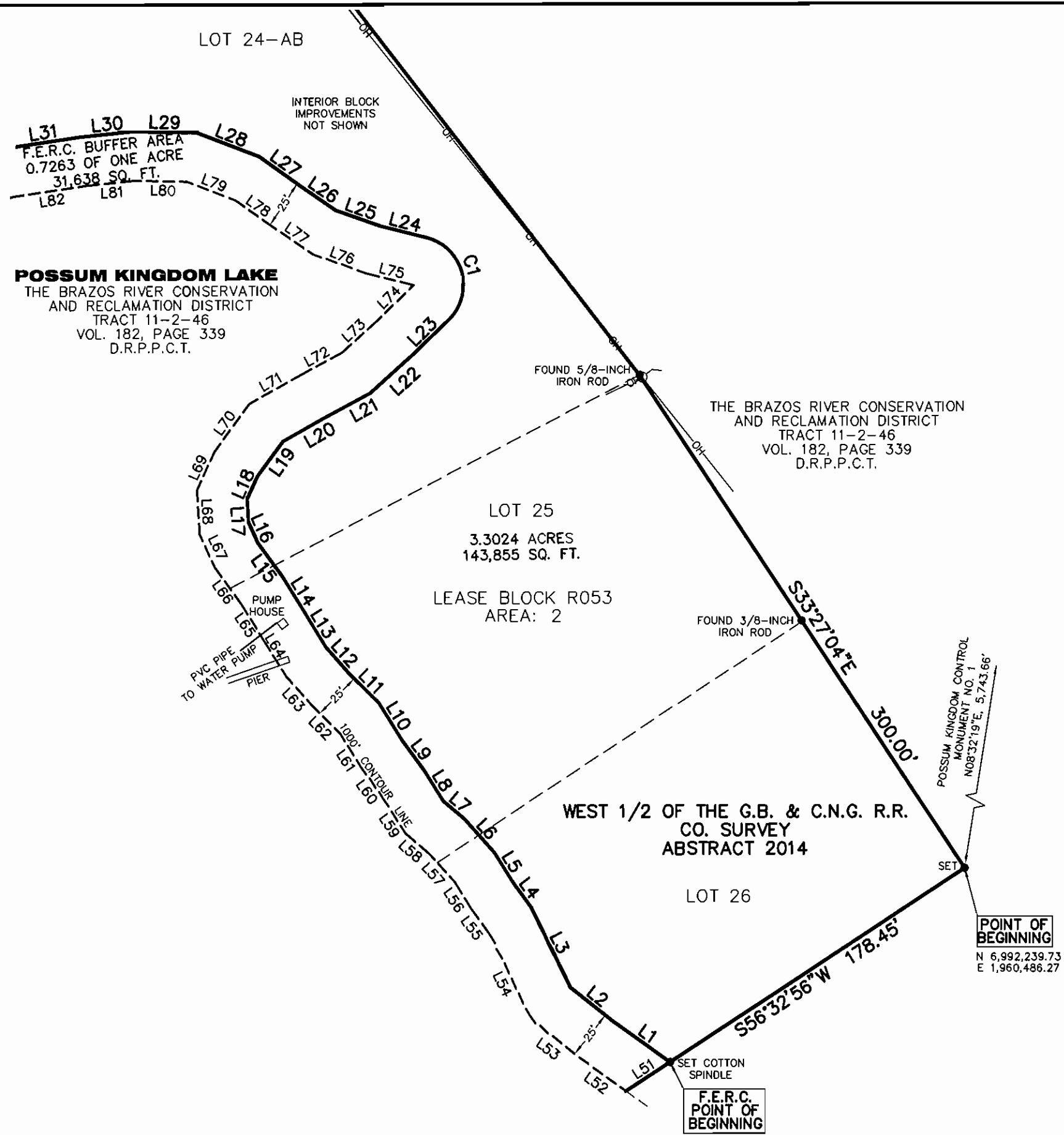
LINE TABLE		
LINE	BEARING	DISTANCE
L63	N41°36'51"W	20.58'
L64	N31°38'24"W	19.73'
L65	N31°46'46"W	23.46'
L66	N35°40'09"W	22.93'
L67	N24°35'26"W	18.48'
L68	N03°34'13"W	22.61'
L69	N24°13'27"E	21.35'
L70	N35°45'16"E	29.80'
L71	N60°34'12"E	29.35'
L72	N61°36'47"E	24.34'
L73	N48°01'05"E	23.91'
L74	N45°43'00"E	26.01'
L75	N75°52'31"W	25.16'
L76	N70°27'11"W	28.84'
L77	N55°18'02"W	25.35'
L78	N54°17'41"W	22.63'
L79	N68°45'35"W	26.17'
L80	N88°53'48"W	27.01'
L81	S84°09'57"W	24.89'
L82	S81°37'11"W	35.61'
L83	S79°02'43"W	27.52'
L84	S89°14'16"W	28.56'
L85	N72°25'42"W	26.23'
L86	N56°35'46"W	27.75'
L87	N53°12'51"W	25.88'
L88	N38°48'43"W	28.80'
L89	N35°58'14"W	22.93'
L90	N21°04'15"W	38.16'
L91	N03°27'32"W	22.21'
L92	N06°55'06"E	21.67'
L93	N26°00'46"E	19.95'

LINE TABLE		
LINE	BEARING	DISTANCE
L94	N33°25'42"E	27.32'
L95	N19°50'19"E	21.69'
L96	N24°42'29"E	24.43'
L97	N38°15'04"E	20.58'
L98	N35°33'27"E	26.98'
L99	N36°15'39"E	43.28'
L100	N49°49'45"E	22.09'
L101	N13°15'10"E	21.64'
L102	N00°35'44"E	21.16'
L103	N19°59'59"E	12.11'
L104	S37°46'16"E	33.80'

CURVE TABLE					
CURVE	LENGTH	DELTA	RADIUS	CHORD BEARING	CHORD
C1	53.05	121°35'31"	25.00	N15°04'46"W	43.64'

STANDARD LAND SURVEY
 OF
4.0287 ACRES
 SITUATED IN TRACT 11-2-46
 AREA 2, LOTS 24AB, 24C, 24D, 25 AND 26
 POSSUM KINGDOM LAKE
 WEST 1/2 OF THE G.B. & C.N.G.
 R.R. CO. SURVEY
 ABSTRACT 2014
 PALO PINTO COUNTY, TEXAS

AECOM	AECOM USA GROUP, INC. 1200 SUMMIT AVENUE, SUITE 600 FORT WORTH, TEXAS 76102 WWW.AECOM.COM 817.698.6770
	Date: 10/27/09 Project No. 60052528.103



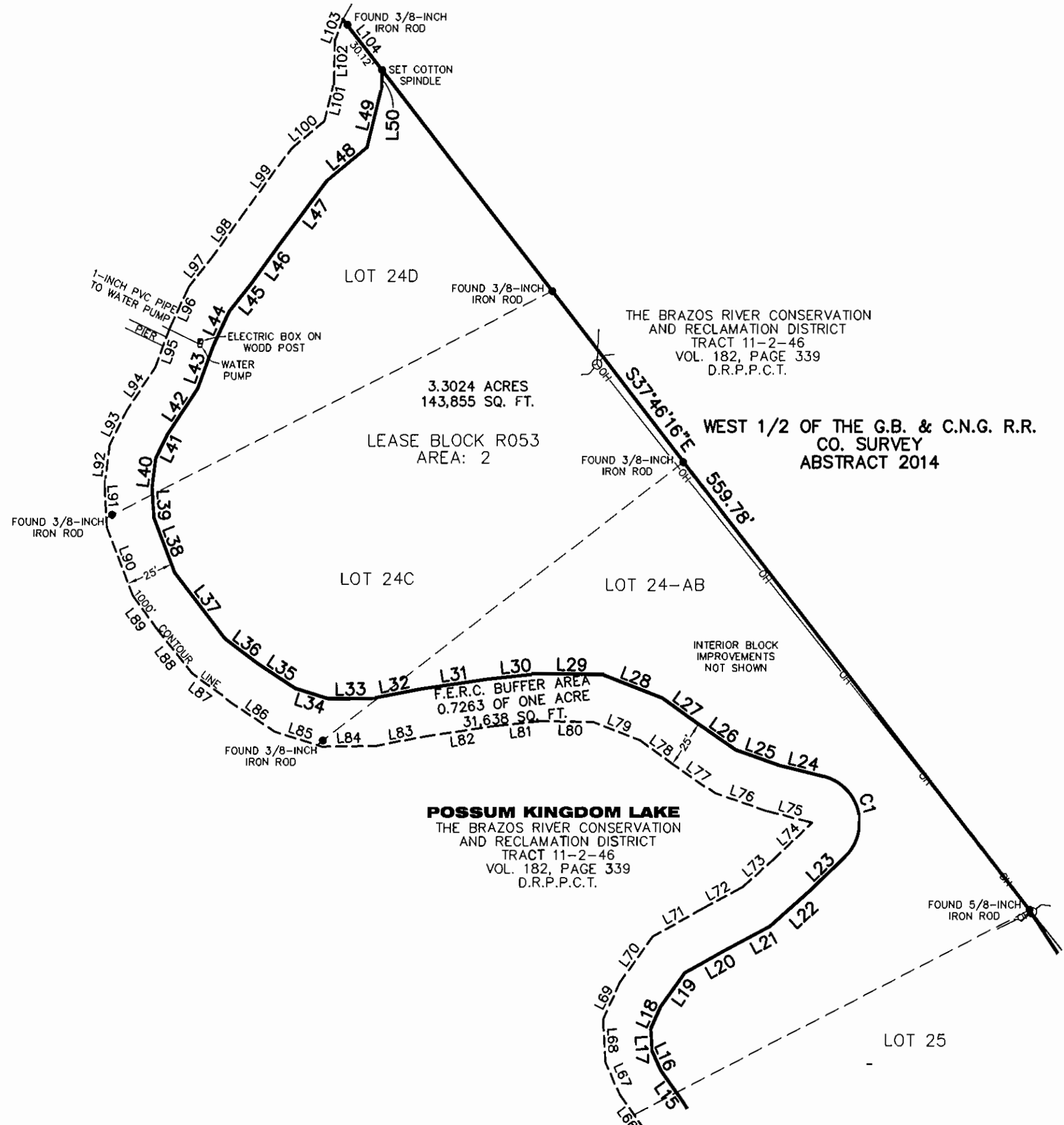
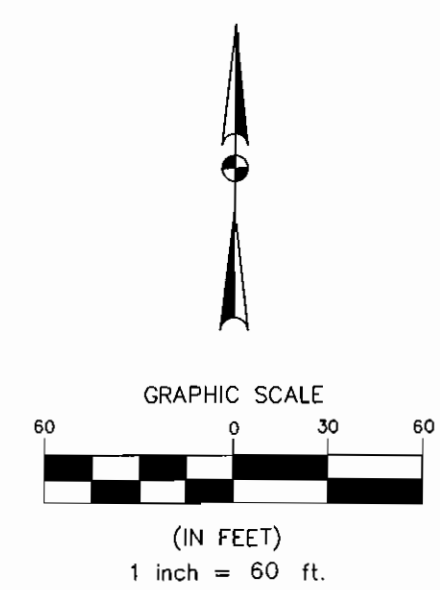
STANDARD LAND SURVEY
OF
4.0287 ACRES
SITUATED IN TRACT 11-2-46
AREA 2, LOTS 24AB, 24C, 24D, 25 AND 26
POSSUM KINGDOM LAKE
WEST 1/2 OF THE G.B. & C.N.G.
R.R. CO. SURVEY
ABSTRACT 2014
PALO PINTO COUNTY, TEXAS

AECOM
AECOM USA GROUP, INC.
1200 SUMMIT AVENUE, SUITE 600
FORT WORTH, TEXAS 76102
WWW.AECOM.COM
817.698.6770

SHEET 2 OF 3
Date: 10/27/09 Project No. 60052528.103 60052528 R53By.dwg

NO PART OR PARTS OF THIS DRAWING MAY BE REPRODUCED OR TRANSMITTED IN ANY WAY OR FORM (ELECTRONIC, MECHANICAL, PHOTOCOPYING, OR OTHERWISE) WITHOUT THE EXPRESS WRITTEN PERMISSION OF AECOM.

j:\60052528 Possum Kingdom Lake\102.01 Assimilation of Data\Group 8\R053\60052528 R053By.dwg 10/27/2009 9:10:38 AM CDT



THE BRAZOS RIVER CONSERVATION AND RECLAMATION DISTRICT
TRACT 11-2-46
VOL. 182, PAGE 339
D.R.P.P.C.T.

3.3024 ACRES
143,855 SQ. FT.

LEASE BLOCK R053
AREA: 2

WEST 1/2 OF THE G.B. & C.N.G. R.R.
CO. SURVEY
ABSTRACT 2014

POSSUM KINGDOM LAKE
THE BRAZOS RIVER CONSERVATION AND RECLAMATION DISTRICT
TRACT 11-2-46
VOL. 182, PAGE 339
D.R.P.P.C.T.

F.E.R.C. BUFFER AREA
0.7263 OF ONE ACRE
31,638 SQ. FT.

STANDARD LAND SURVEY
OF
4.0287 ACRES
SITUATED IN TRACT 11-2-46
AREA 2, LOTS 24AB, 24C, 24D, 25 AND 26
POSSUM KINGDOM LAKE
WEST 1/2 OF THE G.B. & C.N.G.
R.R. CO. SURVEY
ABSTRACT 2014
PALO PINTO COUNTY, TEXAS

AECOM	AECOM USA GROUP, INC. 1200 SUMMIT AVENUE, SUITE 600 FORT WORTH, TEXAS 76102 WWW.AECOM.COM 817.698.6770	
	Date: 10/27/09	Project No. 60052528.103

NO PART OR PARTS OF THIS DRAWING MAY BE REPRODUCED OR TRANSMITTED IN ANY WAY OR FORM (ELECTRONIC, MECHANICAL, PHOTOCOPYING, OR OTHERWISE) WITHOUT THE EXPRESS WRITTEN PERMISSION OF AECOM.

J:\60052528 Possum Kingdom Lake\102.01 Assimilation of Data\Group 8\60053\60052528 R053By.dwg 10/27/2009 9:10:38 AM CDT