

VICINITY MAP
NOT TO SCALE

ACREAGE TABLE
LEASE BLOCK: 6.0941 ACRES
F.E.R.C. BUFFER AREA: 1.2436 ACRES
SURVEY BLOCK: 7.3377 ACRES TOTAL

LEGEND
● = LEASE CORNER MARKER
"AS NOTED"
OH= OVERHEAD LINES

NOTES:

- 1) BEARINGS AND COORDINATES SHOWN HEREON ARE BASED ON THE NORTH AMERICAN DATUM OF 1983, TEXAS COORDINATE SYSTEM, NORTH CENTRAL ZONE (4202).
- 2) 1,000-FOOT CONTOUR ELEVATION OF POSSUM KINGDOM LAKE IS DETERMINED BASED ON MEASUREMENTS FROM THE TOP OF THE EXISTING SPILLWAY CREST GATES AT THE MORRIS SHEPPARO DAM BEING AT ELEVATION 1,000- FEET ABOVE MEAN SEA LEVEL AS NOTED IN FEDERAL POWER COMMISSION REPORT PROJECT NO. 1490 - TEXAS ON JUNE 2, 1938.
- 3) SET = 5/8" IRON ROD W/CAP STAMPED "AECOM" SET; D.R.P.P.C.T.= DEED RECORDS, PALO PINTO COUNTY, TEXAS; P.R.P.P.C.T.= PLAT RECORDS, PALO PINTO COUNTY, TEXAS; F.E.R.C.= FEDERAL ENERGY REGULATORY COMMISSION; J.R.P.P.C.T.= JUDGEMENT RECORDS, PALO PINTO COUNTY, TEXAS.
- 4) METES AND BOUNDS DESCRIPTIONS TO ACCOMPANY THIS SURVEY.

SURVEYORS CERTIFICATE

TO: BRAZOS RIVER AUTHORITY, PATTERSON PK LAND PARTNERSHIP, LTD., AND HERITAGE TITLE COMPANY OF AUSTIN, INC.

I, MUNIR ODHWANI, A REGISTERED PROFESSIONAL LAND SURVEYOR IN THE STATE OF TEXAS, REGISTRATION NUMBER 5996, HEREBY STATE THAT A SURVEY OF THE REAL PROPERTY DESCRIBED IN SEPARATE LEGAL DESCRIPTION AS NOTED HEREON, WAS ACTUALLY MADE UPON THE GROUND UNDER MY DIRECTION AND SUPERVISION, AND THAT TO THE BEST OF MY PROFESSIONAL KNOWLEDGE AND BELIEF, THE INFORMATION SHOWN HEREON IS CORRECT AS DETERMINED BY SAID SURVEY.

THIS SURVEY SUBSTANTIALLY COMPLIES WITH THE CURRENT TEXAS SOCIETY OF PROFESSIONAL SURVEYORS STANDARDS AND SPECIFICATIONS FOR A CATEGORY 1B, CONDITION II SURVEY.

MUNIR ODHWANI
REGISTERED PROFESSIONAL LAND SURVEYOR
TEXAS REGISTRATION NO. 5996

DATE: FEBRUARY 12, 2010



LINE	BEARING	DISTANCE
L1	N05°31'48"W	54.12'
L2	N16°23'55"W	31.27'
L3	N31°25'05"W	31.67'
L4	N44°31'48"W	31.71'
L5	N50°39'56"W	24.61'
L6	N52°56'28"W	27.88'
L7	N61°14'48"W	55.73'
L8	N71°48'54"W	30.21'
L9	N75°43'09"W	24.57'
L10	N44°31'35"W	2.14'
L11	N20°49'24"W	7.30'
L12	N09°15'00"W	17.67'
L13	N09°54'38"E	14.74'
L14	N30°32'36"E	16.16'
L15	N43°40'04"E	14.75'
L16	N40°23'01"E	24.41'
L17	N32°23'21"E	21.04'
L18	N48°09'47"E	20.19'
L19	N58°54'50"E	46.74'
L20	N57°30'42"E	29.01'
L21	N61°46'49"E	28.40'
L22	N69°06'58"E	31.45'
L23	N57°51'55"E	35.03'
L24	N32°17'49"E	34.75'
L25	N42°29'20"E	24.30'
L26	N47°23'57"E	27.35'
L27	N49°20'33"E	26.17'
L28	N47°36'06"E	26.16'
L29	N54°22'01"E	5.54'
L30	N66°34'17"E	43.68'
L31	N39°39'28"E	41.49'
L32	N32°19'00"E	29.90'
L33	N36°19'57"E	24.40'
L34	N42°07'04"E	20.95'
L35	N55°17'40"E	15.61'
L36	N79°11'32"E	9.95'
L37	S61°58'22"E	8.27'
L38	S39°26'21"E	13.66'
L39	S20°03'25"E	14.37'
L40	S02°30'40"W	18.63'
L41	S12°09'14"W	22.87'
L42	S16°55'49"W	27.26'
L43	S22°59'04"W	26.21'
L44	S12°26'56"W	30.35'
L45	S03°32'46"W	26.23'
L46	S04°47'34"W	25.22'
L47	S02°19'51"W	25.91'
L48	S06°23'05"W	44.44'

LINE	BEARING	DISTANCE
L49	S29°54'20"W	38.82'
L50	S14°15'06"W	30.72'
L51	S02°14'57"W	26.63'
L52	S11°07'41"E	23.89'
L53	S07°14'16"E	26.79'
L54	S23°15'47"E	24.64'
L55	S28°33'58"E	18.76'
L56	S24°18'49"E	21.71'
L57	S32°54'24"E	27.52'
L58	S46°04'38"E	29.41'
L59	S51°37'17"E	19.59'
L60	S43°10'27"E	24.43'
L61	S60°19'28"E	29.76'
L62	S61°40'55"E	25.61'
L63	S56°05'53"E	22.37'
L64	S40°15'41"E	40.48'
L65	S60°13'30"E	55.82'
L66	S67°54'53"E	26.89'
L67	S62°33'14"E	27.09'
L68	S65°52'21"E	16.42'
L69	S61°47'54"E	19.41'
L70	S57°56'15"E	25.50'
L71	S68°13'32"E	35.45'
L72	S82°55'53"E	29.20'
L73	N79°07'24"E	31.37'
L74	N75°10'22"E	18.98'
L75	N86°08'48"E	18.64'
L76	S83°26'29"E	23.81'
L77	S84°15'29"E	25.16'
L78	S75°35'23"E	25.57'
L79	S76°56'38"E	15.97'
L80	S66°21'06"E	16.73'
L81	S56°19'46"E	24.72'
L82	S71°17'13"E	37.61'
L83	S78°11'34"E	4.87'
L84	N89°40'26"W	25.13'
L85	N05°31'48"W	49.17'
L86	N16°23'55"W	25.60'
L87	N31°25'05"W	25.50'
L88	N44°31'48"W	27.49'
L89	N50°39'56"W	22.78'
L90	N52°56'28"W	25.57'
L91	N61°14'48"W	51.60'
L92	N71°48'54"W	27.05'
L93	N75°43'09"W	30.69'
L94	N44°31'35"W	14.37'
L95	N20°49'24"W	15.08'
L96	N09°15'00"W	24.42'

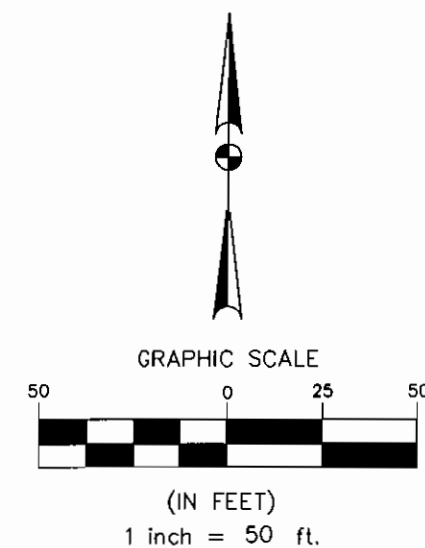
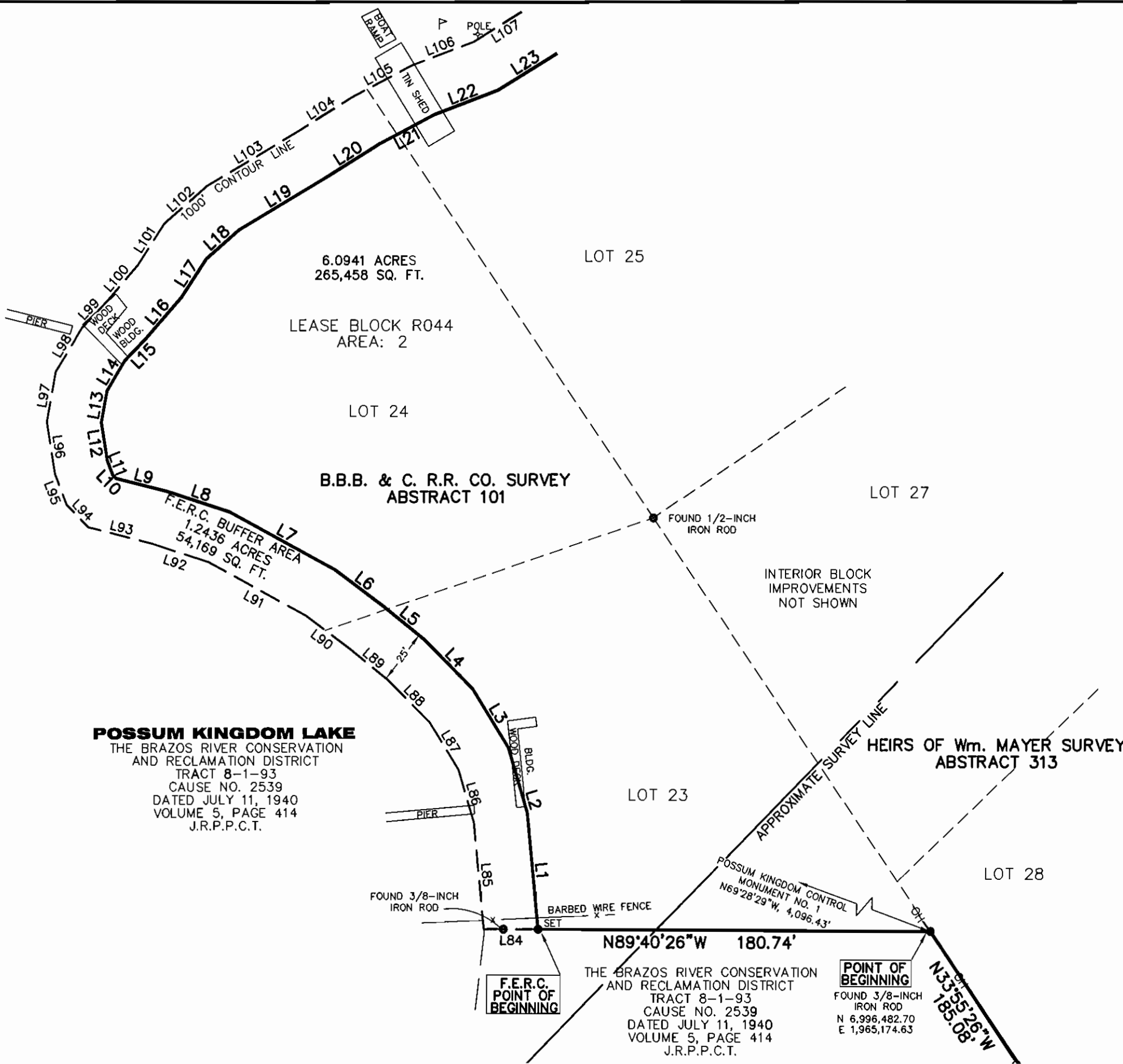
LINE	BEARING	DISTANCE
L97	N09°54'38"E	23.51'
L98	N30°32'36"E	23.59'
L99	N43°40'04"E	16.91'
L100	N40°23'01"E	21.95'
L101	N32°23'21"E	22.76'
L102	N48°09'47"E	26.00'
L103	N58°54'50"E	48.78'
L104	N57°30'42"E	29.64'
L105	N61°46'49"E	30.93'
L106	N69°06'58"E	30.59'
L107	N57°51'55"E	26.90'
L108	N32°17'49"E	31.30'
L109	N42°29'20"E	27.60'
L110	N47°23'57"E	28.85'
L111	N49°20'33"E	26.21'
L112	N47°36'06"E	27.26'
L113	N54°22'01"E	9.69'
L114	N66°34'17"E	40.37'
L115	N39°39'28"E	33.90'
L116	N32°19'00"E	29.17'
L117	N36°19'57"E	26.54'
L118	N42°07'04"E	25.10'
L119	N55°17'40"E	23.79'
L120	N79°11'32"E	24.05'
L121	S61°58'22"E	22.06'
L122	S39°26'21"E	22.91'
L123	S20°03'25"E	23.63'
L124	S02°30'40"W	25.72'
L125	S12°09'14"W	26.02'
L126	S16°55'49"W	29.62'
L127	S22°59'04"W	25.23'
L128	S12°26'56"W	26.10'
L129	S03°32'46"W	24.56'
L130	S04°47'34"W	24.95'
L131	S02°19'51"W	26.26'
L132	S06°23'05"W	50.53'
L133	S29°54'20"W	40.59'
L134	S14°15'06"W	24.65'
L135	S02°14'57"W	21.07'
L136	S11°07'41"E	21.81'
L137	S07°14'16"E	24.12'
L138	S23°15'47"E	19.96'
L139	S28°33'58"E	18.53'

LINE	BEARING	DISTANCE
L140	S24°18'49"E	20.76'
L141	S32°54'24"E	22.76'
L142	S46°04'38"E	25.31'
L143	S51°37'17"E	20.23'
L144	S43°10'27"E	22.50'
L145	S60°19'28"E	25.69'
L146	S61°40'55"E	26.53'
L147	S56°05'53"E	27.06'
L148	S40°15'41"E	39.55'
L149	S60°13'30"E	49.74'
L150	S67°54'53"E	26.38'
L151	S62°33'14"E	27.54'
L152	S65°52'21"E	16.58'
L153	S61°47'54"E	21.14'
L154	S57°56'15"E	24.09'
L155	S68°13'32"E	29.97'
L156	S82°55'53"E	22.02'
L157	N79°07'24"E	26.56'
L158	N75°10'22"E	20.52'
L159	N86°08'48"E	23.32'
L160	S83°26'29"E	25.91'
L161	S84°15'29"E	26.88'
L162	S75°35'23"E	27.17'
L163	S76°56'38"E	17.99'
L164	S66°21'06"E	21.24'
L165	S56°19'46"E	23.63'
L166	S71°17'13"E	32.82'
L167	S78°11'34"E	1.74'
L168	S08°05'14"W	25.05'

STANDARD LAND SURVEY
OF
7.3377 ACRES
SITUATED IN TRACT 8-1-93
AREA 2, LOTS 23-31
POSSUM KINGDOM LAKE
B.B.B. & C. R.R. CO. SURVEY
ABSTRACT 101 AND
HEIRS OF Wm. MAYER SURVEY
ABSTRACT 313
PALO PINTO COUNTY, TEXAS

AECOM

AECOM USA GROUP, INC.
1200 SUMMIT AVENUE, SUITE 600
FORT WORTH, TEXAS 76102
WWW.AECOM.COM
817.698.6770



POSSUM KINGDOM LAKE
 THE BRAZOS RIVER CONSERVATION
 AND RECLAMATION DISTRICT
 TRACT 8-1-93
 CAUSE NO. 2539
 DATED JULY 11, 1940
 VOLUME 5, PAGE 414
 J.R.P.P.C.T.

THE BRAZOS RIVER CONSERVATION
 AND RECLAMATION DISTRICT
 TRACT 8-1-93
 CAUSE NO. 2539
 DATED JULY 11, 1940
 VOLUME 5, PAGE 414
 J.R.P.P.C.T.

STANDARD LAND SURVEY OF
 7.3377 ACRES
 SITUATED IN TRACT 8-1-93
 AREA 2, LOTS 23-31
 POSSUM KINGDOM LAKE
 B.B.B. & C. R.R. CO. SURVEY
 ABSTRACT 101 AND
 HEIRS OF Wm. MAYER SURVEY
 ABSTRACT 313
 PALO PINTO COUNTY, TEXAS

AECOM	AECOM USA GROUP, INC. 1200 SUMMIT AVENUE, SUITE 600 FORT WORTH, TEXAS 76102 WWW.AECOM.COM 817.698.6770	
	Date: 10/26/09	Project No. 60052528.103

NO PART OR PARTS OF THIS DRAWING MAY BE REPRODUCED OR TRANSMITTED IN ANY WAY OR FORM (ELECTRONIC, MECHANICAL, PHOTOCOPYING, OR OTHERWISE) WITHOUT THE EXPRESS WRITTEN PERMISSION OF AECOM.

J:\60052528 Possum Kingdom Lake\102.01 Assimilation of Data\Group 8\R044\60052528 R044By.dwg 10/26/2009 4:18:39 PM CDT

POSSUM KINGDOM LAKE

THE BRAZOS RIVER CONSERVATION
AND RECLAMATION DISTRICT
TRACT 8-1-93
CAUSE NO. 2539
DATED JULY 11, 1940
VOLUME 5, PAGE 414
J.R.P.P.C.T.

B.B.B. & C. R.R. CO. SURVEY
ABSTRACT 101

6.0941 ACRES
265,458 SQ. FT.

LEASE BLOCK R044
AREA: 2

INTERIOR BLOCK
IMPROVEMENTS
NOT SHOWN

POSSUM KINGDOM LAKE

THE BRAZOS RIVER CONSERVATION
AND RECLAMATION DISTRICT
TRACT 8-1-93
CAUSE NO. 2539
DATED JULY 11, 1940
VOLUME 5, PAGE 414
J.R.P.P.C.T.

STANDARD LAND SURVEY
OF
7.3377 ACRES
SITUATED IN TRACT 8-1-93
AREA 2, LOTS 23-31
POSSUM KINGDOM LAKE
B.B.B. & C. R.R. CO. SURVEY
ABSTRACT 101 AND
HEIRS OF Wm. MAYER SURVEY
ABSTRACT 313
PALO PINTO COUNTY, TEXAS

AECOM

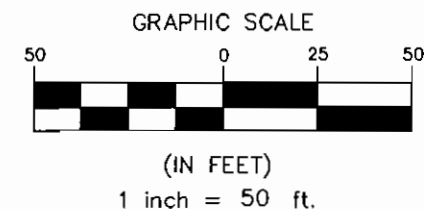
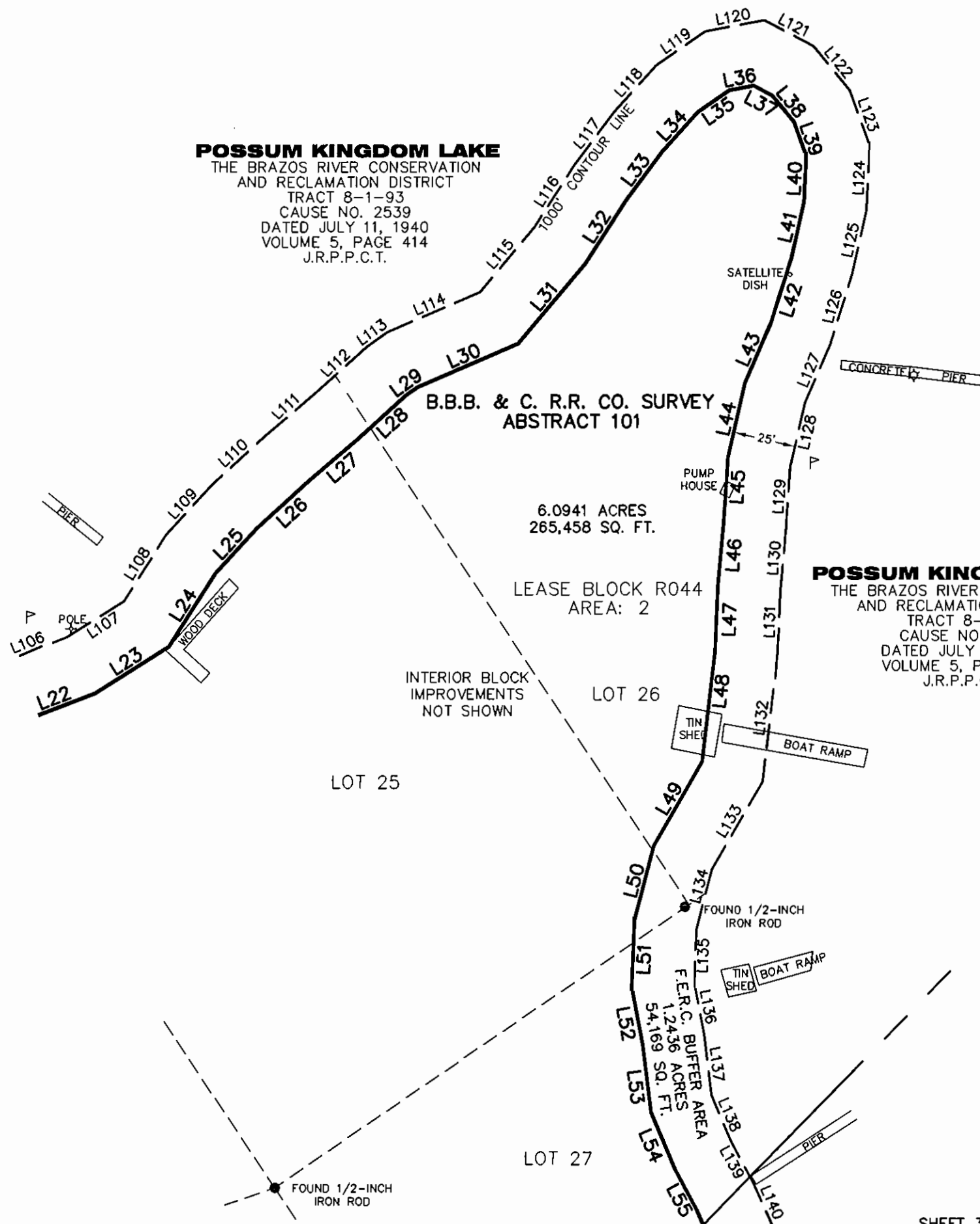
AECOM USA GROUP, INC.
1200 SUMMIT AVENUE, SUITE 600
FORT WORTH, TEXAS 76102
WWW.AECOM.COM
817.698.6770

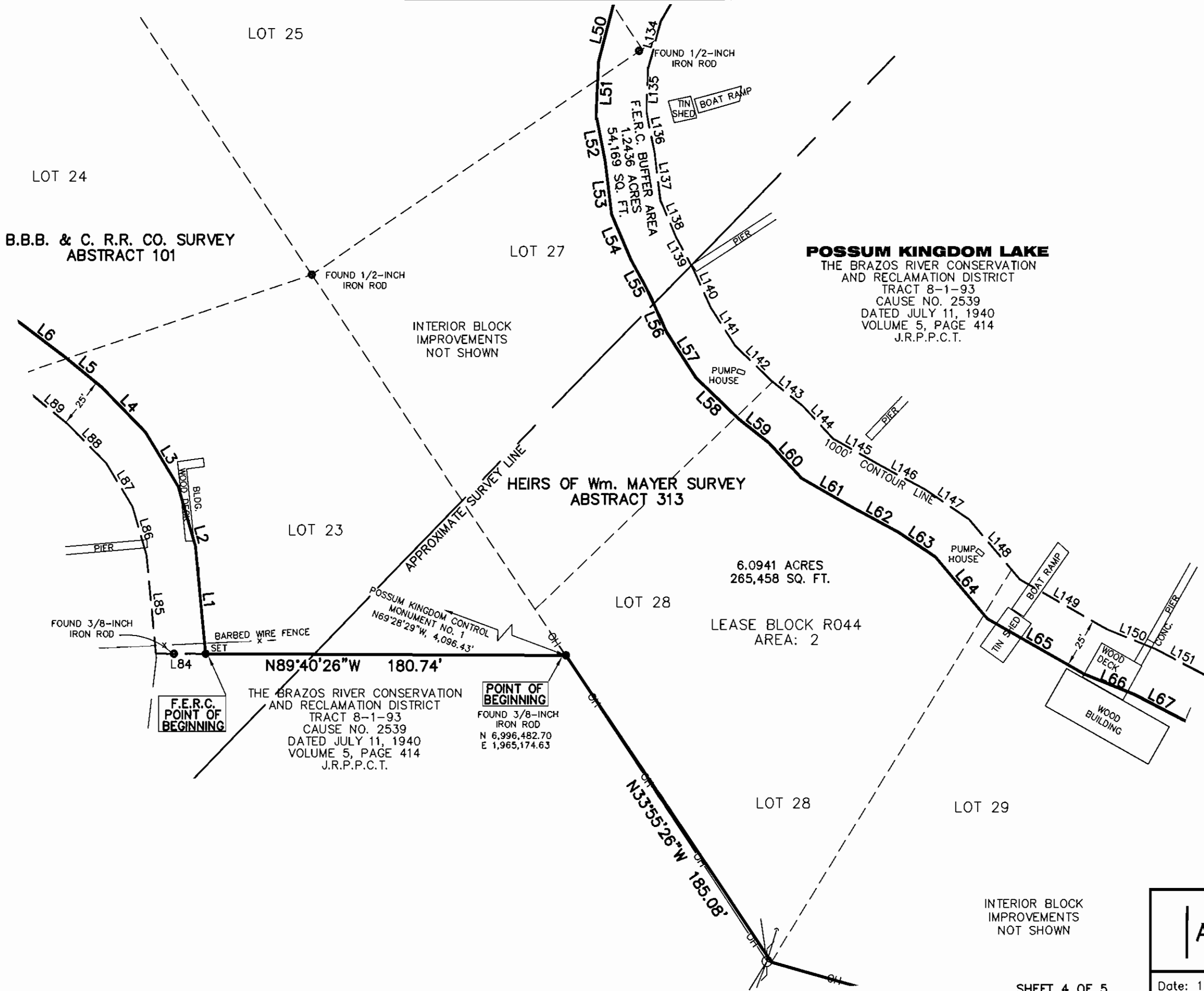
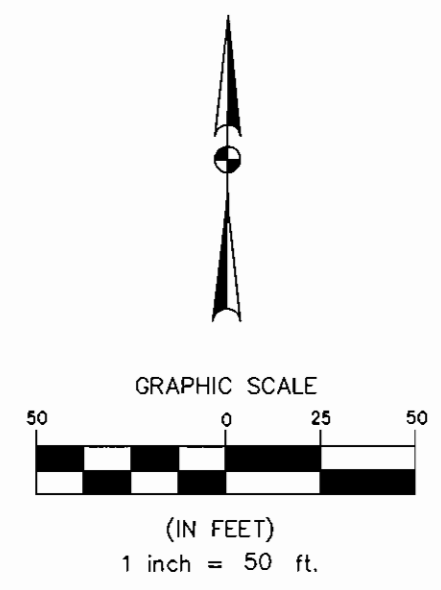
Date: 10/26/09

Project No. 60052528.103

60052528
R44By.dwg

SHEET 3 OF 5





POSSUM KINGDOM LAKE
 THE BRAZOS RIVER CONSERVATION
 AND RECLAMATION DISTRICT
 TRACT 8-1-93
 CAUSE NO. 2539
 DATED JULY 11, 1940
 VOLUME 5, PAGE 414
 J.R.P.P.C.T.

**B.B.B. & C. R.R. CO. SURVEY
 ABSTRACT 101**

**HEIRS OF Wm. MAYER SURVEY
 ABSTRACT 313**

THE BRAZOS RIVER CONSERVATION
 AND RECLAMATION DISTRICT
 TRACT 8-1-93
 CAUSE NO. 2539
 DATED JULY 11, 1940
 VOLUME 5, PAGE 414
 J.R.P.P.C.T.

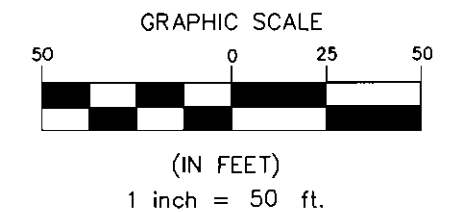
6.0941 ACRES
 265,458 SQ. FT.
 LEASE BLOCK R044
 AREA: 2

STANDARD LAND SURVEY
 OF
7.3377 ACRES
 SITUATED IN TRACT 8-1-93
 AREA 2, LOTS 23-31
 POSSUM KINGDOM LAKE
 B.B.B. & C. R.R. CO. SURVEY
 ABSTRACT 101 AND
 HEIRS OF Wm. MAYER SURVEY
 ABSTRACT 313
 PALO PINTO COUNTY, TEXAS

AECOM	AECOM USA GROUP, INC. 1200 SUMMIT AVENUE, SUITE 600 FORT WORTH, TEXAS 76102 WWW.AECOM.COM 817.698.6770	
	Date: 10/26/09	Project No. 60052528.103
		60052528 R44By.dwg

NO PART OR PARTS OF THIS DRAWING MAY BE REPRODUCED OR TRANSMITTED IN ANY WAY OR FORM (ELECTRONIC, MECHANICAL, PHOTOCOPYING, OR OTHERWISE) WITHOUT THE EXPRESS WRITTEN PERMISSION OF AECOM.

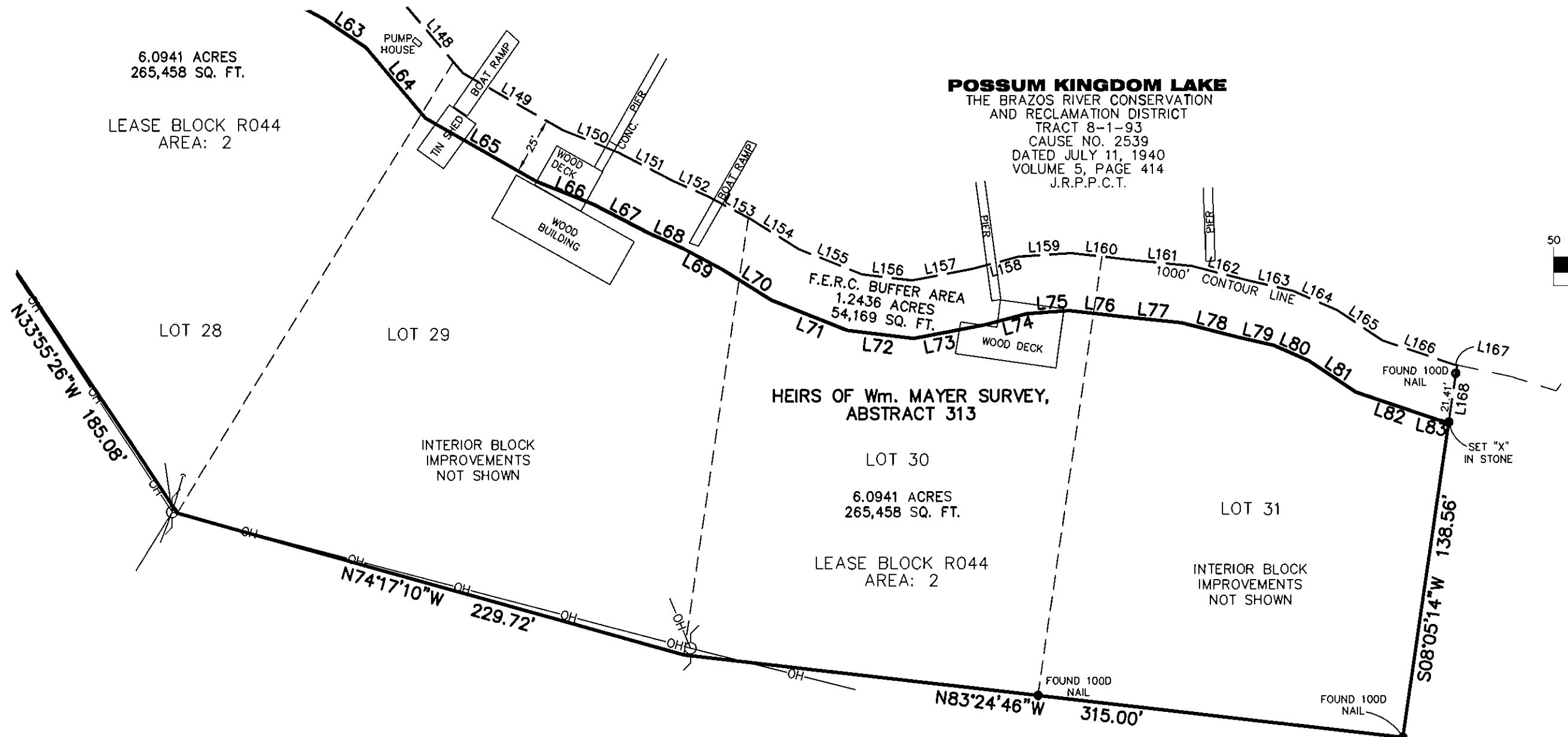
J:\60052528_Possum Kingdom Lake\102.01 Assimilation of Data\Group 8\R044\60052528 R044By.dwg 10/26/2009 4:18:39 PM CDT



POSSUM KINGDOM LAKE
 THE BRAZOS RIVER CONSERVATION
 AND RECLAMATION DISTRICT
 TRACT 8-1-93
 CAUSE NO. 2539
 DATED JULY 11, 1940
 VOLUME 5, PAGE 414
 J.R.P.P.C.T.

THE BRAZOS RIVER CONSERVATION
 AND RECLAMATION DISTRICT
 TRACT 8-1-93
 CAUSE NO. 2539
 DATED JULY 11, 1940
 VOLUME 5, PAGE 414
 J.R.P.P.C.T.

STANDARD LAND SURVEY OF
 7.3377 ACRES
 SITUATED IN TRACT 8-1-93
 AREA 2, LOTS 23-31
 POSSUM KINGDOM LAKE
 B.B.B. & C. R.R. CO. SURVEY
 ABSTRACT 101 AND
 HEIRS OF Wm. MAYER SURVEY
 ABSTRACT 313
 PALO PINTO COUNTY, TEXAS



AECOM	AECOM USA GROUP, INC. 1200 SUMMIT AVENUE, SUITE 600 FORT WORTH, TEXAS 76102 WWW.AECOM.COM 817.698.6770	
	Date: 10/26/09	Project No. 60052528.103
		60052528 R44By.dwg

NO PART OR PARTS OF THIS DRAWING MAY BE REPRODUCED OR RETRANSMITTED IN ANY WAY OR FORM (ELECTRONIC, MECHANICAL, PHOTOCOPYING, OR OTHERWISE) WITHOUT THE EXPRESS WRITTEN PERMISSION OF AECOM.

J:\60052528 Possum Kingdom Lake\102.01 Assimilation of Data\Group 8\R044\60052528 R044By.dwg 10/26/2009 4:18:39 PM CDT