

VICINITY MAP
NOT TO SCALE

LEGEND
 ● = LEASE CORNER MARKER
 "AS NOTED"
 OH= OVERHEAD LINES
 ○ = POWER POLE

ACREAGE TABLE
 LEASE BLOCK: 7.8963 ACRES
 F.E.R.C. BUFFER AREA: 1.1911 ACRES
 SURVEY BLOCK: 9.0874 ACRES TOTAL

- NOTES:**
- 1) BEARINGS AND COORDINATES SHOWN HEREON ARE BASED ON THE NORTH AMERICAN DATUM OF 1983, TEXAS COORDINATE SYSTEM, NORTH CENTRAL ZONE (4202).
 - 2) 1,000-FOOT CONTOUR ELEVATION OF POSSUM KINGDOM LAKE IS DETERMINED BASED ON MEASUREMENTS FROM THE TOP OF THE EXISTING SPILLWAY CREST GATES AT THE MORRIS SHEPPARD DAM BEING AT ELEVATION 1,000- FEET ABOVE MEAN SEA LEVEL AS NOTED IN FEDERAL POWER COMMISSION REPORT PROJECT NO. 1490 - TEXAS ON JUNE 2, 1938.
 - 3) SET = 5/8" IRON ROD W/CAP STAMPED "AECOM" SET; D.R.P.P.C.T.= DEED RECORDS, PALO PINTO COUNTY, TEXAS; P.R.P.P.C.T.= PLAT RECORDS, PALO PINTO COUNTY, TEXAS; F.E.R.C.= FEDERAL ENERGY REGULATORY COMMISSION; J.R.P.P.C.T.= JUDGMENT RECORDS, PALO PINTO COUNTY, TEXAS.
 - 4) METES AND BOUNDS DESCRIPTIONS TO ACCOMPANY THIS SURVEY.

SURVEYORS CERTIFICATE

TO: BRAZOS RIVER AUTHORITY, PATTERSON PK LAND PARTNERSHIP, LTD., AND HERITAGE TITLE COMPANY OF AUSTIN, INC.

I, MUNIR ODHWANI, A REGISTERED PROFESSIONAL LAND SURVEYOR IN THE STATE OF TEXAS, REGISTRATION NUMBER 5996, HEREBY STATE THAT A SURVEY OF THE REAL PROPERTY DESCRIBED IN SEPARATE LEGAL DESCRIPTION AS NOTED HEREON, WAS ACTUALLY MADE UPON THE GROUND UNDER MY DIRECTION AND SUPERVISION, AND THAT TO THE BEST OF MY PROFESSIONAL KNOWLEDGE AND BELIEF, THE INFORMATION SHOWN HEREON IS CORRECT AS DETERMINED BY SAID SURVEY.

THIS SURVEY SUBSTANTIALLY COMPLIES WITH THE CURRENT TEXAS SOCIETY OF PROFESSIONAL SURVEYORS STANDARDS AND SPECIFICATIONS FOR A CATEGORY 1B, CONDITION II SURVEY.

Munir Odhwani
 MUNIR ODHWANI
 REGISTERED PROFESSIONAL LAND SURVEYOR
 TEXAS REGISTRATION NO. 5996



DATE: FEBRUARY 12, 2010

LINE TABLE		
LINE	BEARING	DISTANCE
L1	N25°32'10"E	4.75'
L2	N29°50'48"E	7.70'
L3	N44°54'42"E	12.31'
L4	N28°05'04"E	25.20'
L5	N31°44'05"E	29.81'
L6	N38°29'03"E	22.27'
L7	N42°38'15"E	21.19'
L8	N36°06'32"E	17.83'
L9	N53°16'51"E	24.69'
L10	N20°53'35"E	23.17'
L11	N47°50'53"E	17.85'
L12	N51°51'59"E	25.54'
L13	N56°25'53"E	16.77'
L14	N75°27'48"E	43.66'
L15	S89°30'06"E	18.46'
L16	S84°52'42"E	20.37'
L17	S80°08'01"E	24.16'
L18	N78°31'55"E	48.21'
L19	N22°30'04"E	47.61'
L20	N22°35'01"E	29.90'
L21	N19°39'53"E	26.49'
L22	N29°38'43"E	17.86'
L23	N26°09'47"E	29.86'
L24	N21°54'02"E	28.21'
L25	N19°26'53"E	27.10'
L26	N14°05'55"E	23.96'
L27	N11°54'52"E	25.80'
L28	N06°29'57"E	7.61'
L29	N29°04'49"E	36.32'
L30	N14°35'39"W	70.59'
L31	N09°37'00"W	23.16'
L32	N15°21'58"W	21.70'
L33	N03°00'32"W	51.49'
L34	N28°41'29"W	40.63'
L35	N16°22'18"W	19.34'
L36	N11°30'11"E	8.54'
L37	N39°52'01"E	19.14'

LINE TABLE		
LINE	BEARING	DISTANCE
L38	N47°43'19"E	21.89'
L39	N55°27'54"E	29.48'
L40	N39°46'45"E	29.37'
L41	N37°15'14"E	30.23'
L42	N27°06'13"E	29.96'
L43	N18°49'46"E	35.77'
L44	N06°33'10"W	34.81'
L45	N18°32'22"W	29.12'
L46	N27°51'54"W	24.99'
L47	N10°50'32"E	12.36'
L48	N21°40'56"E	16.10'
L49	N48°59'25"E	14.14'
L50	N59°42'56"E	14.99'
L51	N75°29'29"E	8.87'
L52	S72°15'16"E	11.32'
L53	S66°12'44"E	18.50'
L54	S58°44'46"E	20.74'
L55	S51°58'35"E	19.87'
L56	S34°14'56"E	22.63'
L57	S41°32'21"E	28.38'
L58	S49°51'02"E	25.43'
L59	S52°46'28"E	27.93'
L60	S50°48'32"E	32.62'
L61	S70°54'42"E	39.24'
L62	N85°44'59"E	34.12'
L63	N62°03'04"E	27.79'
L64	N68°22'43"E	30.26'
L65	N42°27'16"E	48.16'
L66	N18°57'50"W	34.78'
L67	N01°14'50"E	9.85'
L68	N34°20'12"E	9.52'
L69	N49°29'38"E	18.37'
L70	N55°07'29"E	25.89'
L71	N46°40'02"E	64.63'
L72	N11°23'16"E	33.68'
L73	N30°55'54"E	17.30'
L74	N55°53'54"E	22.52'

LINE TABLE		
LINE	BEARING	DISTANCE
L75	N57°12'27"E	29.03'
L76	N49°06'53"E	32.85'
L77	N46°40'30"E	30.00'
L78	N43°33'04"E	32.90'
L79	N32°56'22"E	35.81'
L80	N18°56'51"E	2.04'
L81	N59°55'02"W	25.08'
L82	N25°32'10"E	3.70'
L83	N29°50'48"E	11.95'
L84	N44°54'42"E	11.92'
L85	N28°05'04"E	22.30'
L86	N31°44'05"E	32.08'
L87	N38°29'03"E	24.65'
L88	N42°38'15"E	20.67'
L89	N36°06'32"E	20.18'
L90	N53°16'51"E	21.20'
L91	N20°53'35"E	21.91'
L92	N47°50'53"E	24.72'
L93	N51°51'59"E	27.41'
L94	N56°25'53"E	21.96'
L95	N75°27'48"E	51.15'
L96	S89°30'06"E	22.77'
L97	S84°52'42"E	22.42'
L98	S80°08'01"E	20.49'
L99	N78°31'55"E	30.20'
L100	N22°30'04"E	34.33'
L101	N22°35'01"E	29.28'
L102	N19°39'53"E	28.04'
L103	N29°38'43"E	19.28'
L104	N26°09'47"E	28.17'
L105	N21°54'02"E	26.75'
L106	N19°26'53"E	25.40'
L107	N14°05'55"E	22.31'
L108	N11°54'52"E	24.14'
L109	N06°29'57"E	11.42'
L110	N29°04'49"E	31.29'
L111	N14°35'39"W	61.66'

LINE TABLE		
LINE	BEARING	DISTANCE
L112	N09°37'00"W	22.99'
L113	N15°21'58"W	23.15'
L114	N03°00'32"W	48.50'
L115	N28°41'29"W	37.63'
L116	N16°22'18"W	28.24'
L117	N11°30'11"E	21.07'
L118	N39°52'01"E	27.17'
L119	N47°43'19"E	25.30'
L120	N55°27'54"E	27.73'
L121	N39°46'45"E	25.37'
L122	N37°15'14"E	27.46'
L123	N27°06'13"E	25.93'
L124	N18°49'46"E	28.33'
L125	N06°33'10"W	26.55'
L126	N18°32'22"W	24.46'
L127	N27°51'54"W	31.74'
L128	N10°50'32"E	23.51'
L129	N21°40'56"E	24.55'
L130	N48°59'25"E	22.56'
L131	N59°42'56"E	20.80'
L132	N75°29'29"E	19.57'
L133	S72°15'16"E	19.87'
L134	S66°12'44"E	21.45'
L135	S58°44'46"E	23.85'
L136	S51°58'35"E	25.24'
L137	S34°14'56"E	24.93'
L138	S41°32'21"E	24.97'
L139	S49°51'02"E	22.98'
L140	S52°46'28"E	27.72'
L141	S50°48'32"E	28.62'
L142	S70°54'42"E	29.64'
L143	N85°44'59"E	23.71'
L144	N62°03'04"E	23.93'
L145	N68°22'43"E	25.89'
L146	N42°27'16"E	27.56'
L147	N18°57'50"W	24.39'
L148	N01°14'50"E	21.73'

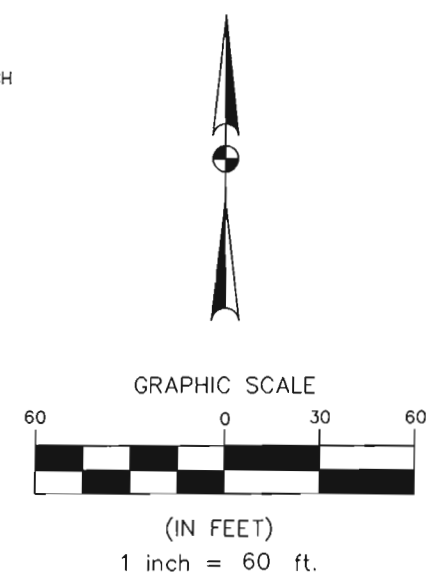
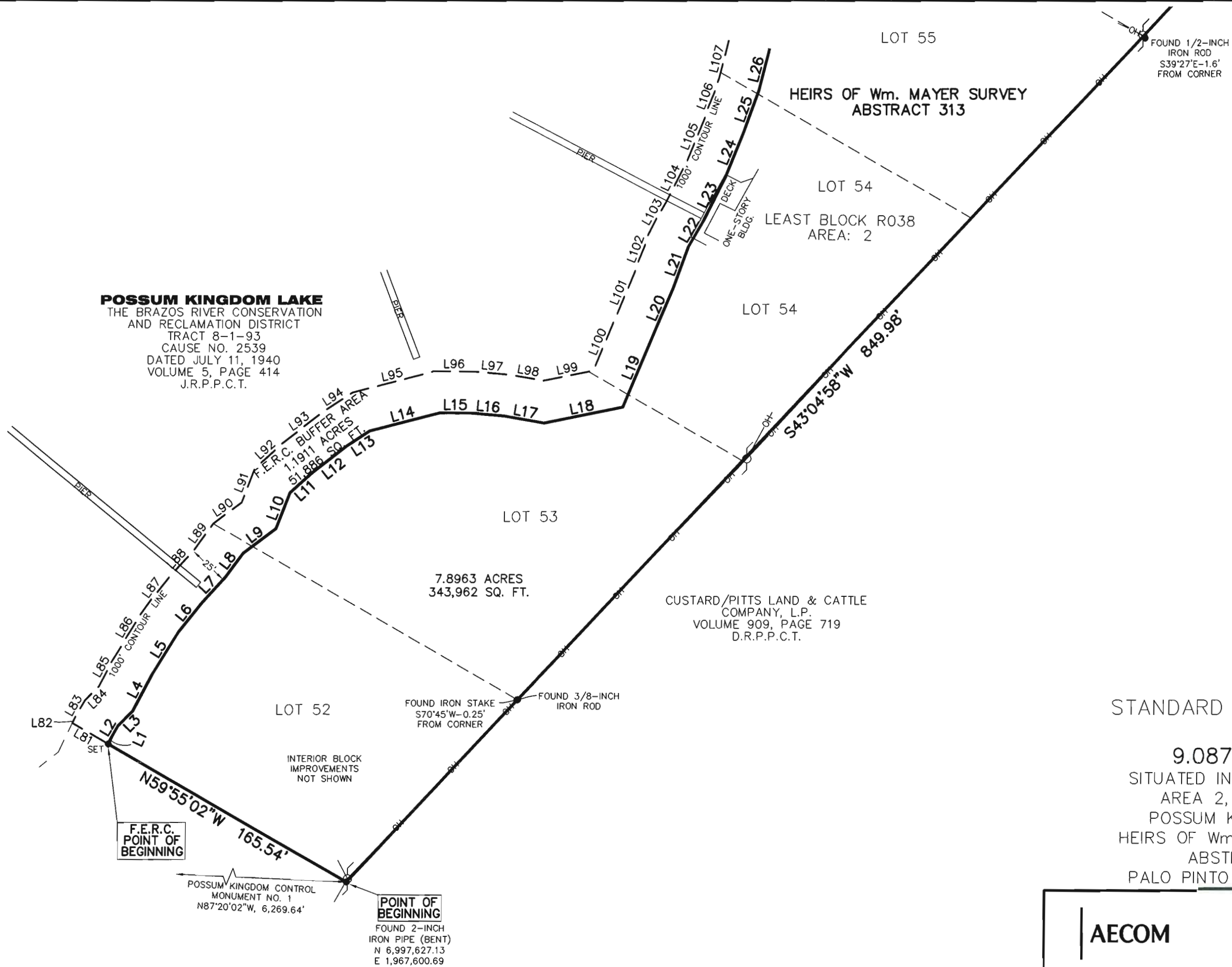
LINE TABLE		
LINE	BEARING	DISTANCE
L149	N34°20'12"E	20.27'
L150	N49°29'38"E	22.92'
L151	N55°07'29"E	25.27'
L152	N45°59'55"E	26.49'
L153	N47°17'32"E	28.34'
L154	N11°23'16"E	30.03'
L155	N30°55'54"E	27.14'
L156	N55°53'54"E	28.34'
L157	N57°12'27"E	27.55'
L158	N49°06'53"E	30.55'
L159	N46°40'30"E	28.79'
L160	N43°33'04"E	29.90'
L161	N32°56'22"E	30.42'
L162	N18°56'51"E	3.88'
L163	S59°56'51"E	25.48'

STANDARD LAND SURVEY
 OF
9.0874 ACRES
 SITUATED IN TRACT 8-1-93
 AREA 2, LOTS 52-61
 POSSUM KINGDOM LAKE
 HEIRS OF Wm. MAYER SURVEY
 ABSTRACT 313
 PALO PINTO COUNTY, TEXAS

AECOM	AECOM USA GROUP, INC. 1200 SUMMIT AVENUE, SUITE 600 FORT WORTH, TEXAS 76102 WWW.AECOM.COM 817.698.6770	
	Date: 11/10/09	Project No. 60052528.103

J:\60052528 Possum Kingdom Lake\102.01 Assimilation of Data\Group 8\R053\60052528 R053By.dwg 10/27/2009 9:10:38 AM CDT

POSSUM KINGDOM LAKE
 THE BRAZOS RIVER CONSERVATION
 AND RECLAMATION DISTRICT
 TRACT 8-1-93
 CAUSE NO. 2539
 DATED JULY 11, 1940
 VOLUME 5, PAGE 414
 J.R.P.P.C.T.

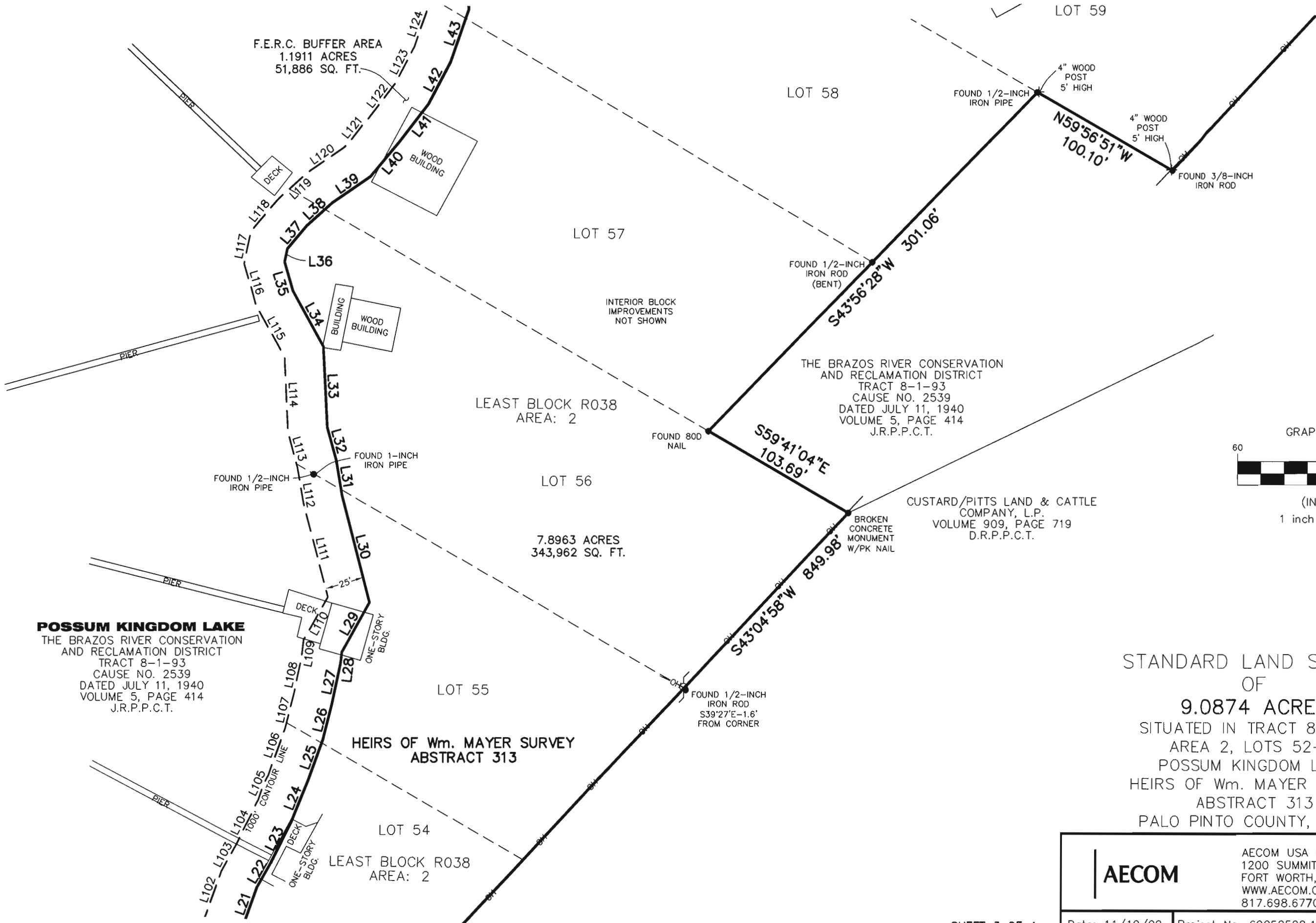


STANDARD LAND SURVEY
 OF
9.0874 ACRES
 SITUATED IN TRACT 8-1-93
 AREA 2, LOTS 52-61
 POSSUM KINGDOM LAKE
 HEIRS OF Wm. MAYER SURVEY
 ABSTRACT 313
 PALO PINTO COUNTY, TEXAS

AECOM
 AECOM USA GROUP, INC.
 1200 SUMMIT AVENUE, SUITE 600
 FORT WORTH, TEXAS 76102
 WWW.AECOM.COM
 817.698.6770

NO PART OR PARTS OF THIS DRAWING MAY BE REPRODUCED OR RE TRANSMITTED IN ANY WAY OR FORM (ELECTRONIC, MECHANICAL, PHOTOCOPYING, OR OTHERWISE) WITHOUT THE EXPRESS WRITTEN PERMISSION OF AECOM.

J:\60052528 Possum Kingdom Lake\02.01 Assimilation of Data\Group 8\6053\60052528 R053By.dwg 10/27/2009 9:10:38 AM CDT



POSSUM KINGDOM LAKE
 THE BRAZOS RIVER CONSERVATION
 AND RECLAMATION DISTRICT
 TRACT 8-1-93
 CAUSE NO. 2539
 DATED JULY 11, 1940
 VOLUME 5, PAGE 414
 J.R.P.P.C.T.

**HEIRS OF Wm. MAYER SURVEY
 ABSTRACT 313**

**THE BRAZOS RIVER CONSERVATION
 AND RECLAMATION DISTRICT
 TRACT 8-1-93
 CAUSE NO. 2539
 DATED JULY 11, 1940
 VOLUME 5, PAGE 414
 J.R.P.P.C.T.**

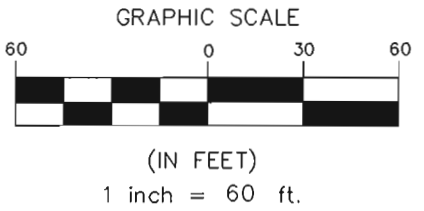
**CUSTARD/PITTS LAND & CATTLE
 COMPANY, L.P.
 VOLUME 909, PAGE 719
 D.R.P.P.C.T.**

**STANDARD LAND SURVEY
 OF
 9.0874 ACRES
 SITUATED IN TRACT 8-1-93
 AREA 2, LOTS 52-61
 POSSUM KINGDOM LAKE
 HEIRS OF Wm. MAYER SURVEY
 ABSTRACT 313
 PALO PINTO COUNTY, TEXAS**

AECOM	AECOM USA GROUP, INC. 1200 SUMMIT AVENUE, SUITE 600 FORT WORTH, TEXAS 76102 WWW.AECOM.COM 817.698.6770	
	Date: 11/10/09	Project No. 60052528.103
SHEET 3 OF 4		60052528 R38By.dwg

NO PART OR PARTS OF THIS DRAWING MAY BE REPRODUCED OR TRANSMITTED IN ANY WAY OR FORM (ELECTRONIC, MECHANICAL, PHOTOCOPYING, OR OTHERWISE) WITHOUT THE EXPRESS WRITTEN PERMISSION OF AECOM.

J:\60052528 Possum Kingdom Lake\102.01 Assimilation of Data\Group 8\R053\60052528 R053By.dwg 10/27/2009 9:10:38 AM COT



POSSUM KINGDOM LAKE
THE BRAZOS RIVER CONSERVATION
AND RECLAMATION DISTRICT
TRACT 8-1-93
CAUSE NO. 2539
DATED JULY 11, 1940
VOLUME 5, PAGE 414
J.R.P.P.C.T.

HEIRS OF Wm. MAYER SURVEY
ABSTRACT 313

LEASE BLOCK R038
AREA: 2

7.8963 ACRES
343,962 SQ. FT.

THE BRAZOS RIVER CONSERVATION
AND RECLAMATION DISTRICT
TRACT 8-1-93
CAUSE NO. 2539
DATED JULY 11, 1940
VOLUME 5, PAGE 414
J.R.P.P.C.T.

STANDARD LAND SURVEY
OF
9.0874 ACRES
SITUATED IN TRACT 8-1-93
AREA 2, LOTS 52-61
POSSUM KINGDOM LAKE
HEIRS OF Wm. MAYER SURVEY
ABSTRACT 313
PALO PINTO COUNTY, TEXAS

AECOM
AECOM USA GROUP, INC.
1200 SUMMIT AVENUE, SUITE 600
FORT WORTH, TEXAS 76102
WWW.AECOM.COM
817.698.6770

SHEET 4 OF 4

Date: 11/10/09 Project No. 60052528.103 60052528 R38By.dwg

F.E.R.C. BUFFER AREA
1.1911 ACRES
51,886 SQ. FT.

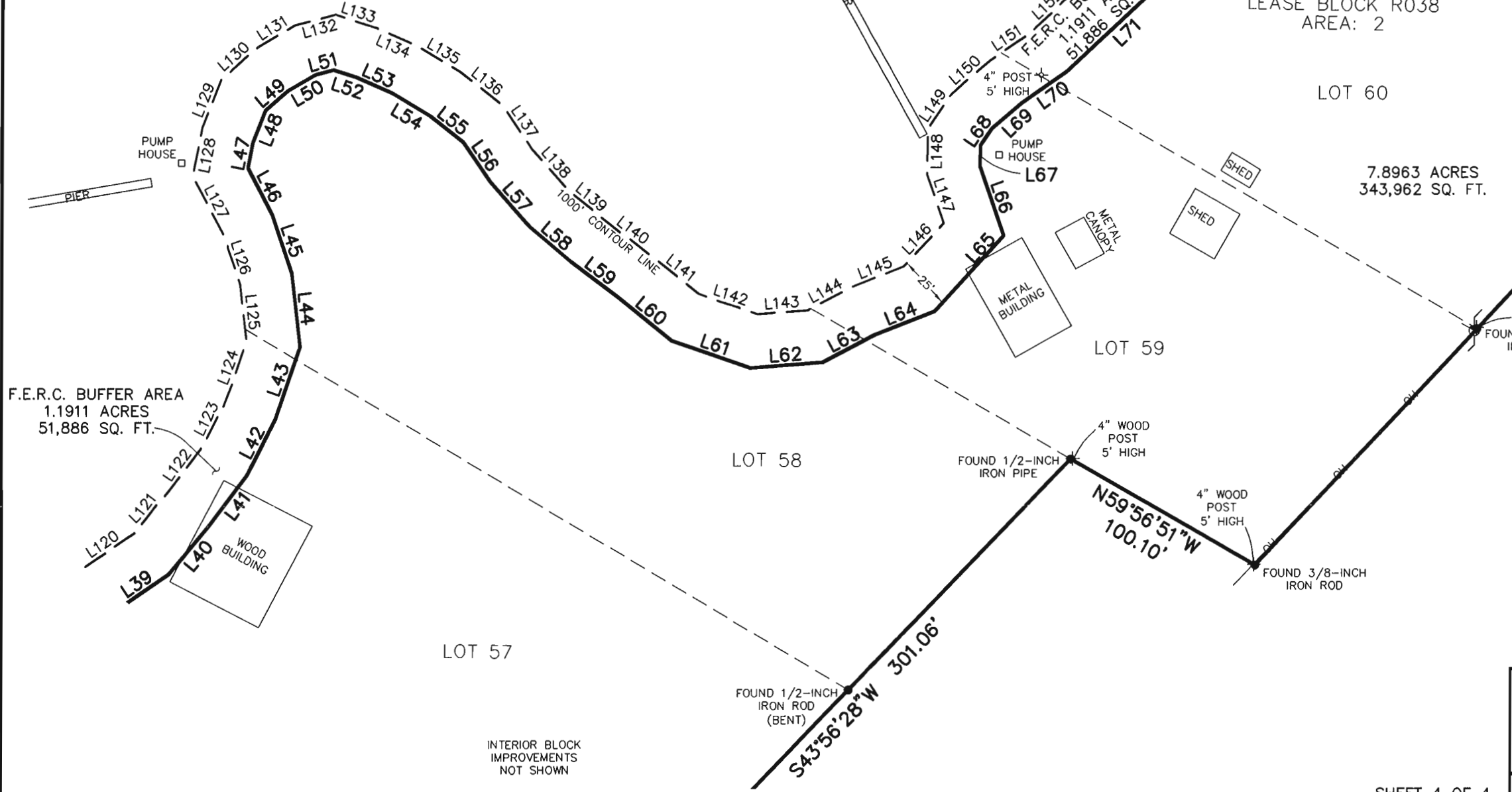
LOT 57

LOT 58

LOT 59

LOT 60

LOT 61



NO PART OR PARTS OF THIS DRAWING MAY BE REPRODUCED OR RE TRANSMITTED IN ANY WAY OR FORM (ELECTRONIC, MECHANICAL, PHOTOCOPYING, OR OTHERWISE) WITHOUT THE EXPRESS WRITTEN PERMISSION OF AECOM.

J:\60052528 Possum Kingdom Lake\102.01 Assimilation of Data\Group 8\RO53\60052528 R053By.dwg 10/27/2009 9:10:38 AM CDT