

VICINITY MAP
NOT TO SCALE

- LEGEND**
- = LEASE CORNER MARKER
"AS NOTED"
 - OH = OVERHEAD LINES
 - = POWER POLE

ACREAGE TABLE	
LEASE BLOCK:	6.4941 ACRES
F.E.R.C. BUFFER AREA:	1.1928 ACRES
SURVEY BLOCK:	7.6869 ACRES TOTAL

NOTES:


- 1) BEARINGS AND COORDINATES SHOWN HEREON ARE BASED ON THE NORTH AMERICAN DATUM OF 1983, TEXAS COORDINATE SYSTEM, NORTH CENTRAL ZONE (4202).
- 2) 1,000-FOOT CONTOUR ELEVATION OF POSSUM KINGDOM LAKE IS DETERMINED BASED ON MEASUREMENTS FROM THE TOP OF THE EXISTING SPILLWAY CREST GATES AT THE MORRIS SHEPPARD DAM BEING AT ELEVATION 1,000- FEET ABOVE MEAN SEA LEVEL AS NOTED IN FEDERAL POWER COMMISSION REPORT PROJECT NO. 1490 - TEXAS ON JUNE 2, 1938.
- 3) SET = 5/8" IRON ROD W/CAP STAMPED "AECOM" SET; O.R.P.P.C.T.= DEED RECORDS, PALO PINTO COUNTY, TEXAS; P.R.P.P.C.T.= PLAT RECORDS, PALO PINTO COUNTY, TEXAS; F.E.R.C.= FEDERAL ENERGY REGULATORY COMMISSION; J.R.P.P.C.T.= JUDGMENT RECORDS, PALO PINTO COUNTY, TEXAS.
- 4) METES AND BOUNDS DESCRIPTIONS TO ACCOMPANY THIS SURVEY.

SURVEYORS CERTIFICATE

TO: BRAZOS RIVER AUTHORITY, PATTERSON PK LAND PARTNERSHIP, LTD., AND HERITAGE TITLE COMPANY OF AUSTIN, INC.

I, MUNIR ODHWANI, A REGISTERED PROFESSIONAL LAND SURVEYOR IN THE STATE OF TEXAS, REGISTRATION NUMBER 5996, HEREBY STATE THAT A SURVEY OF THE REAL PROPERTY DESCRIBED IN SEPARATE LEGAL DESCRIPTION AS NOTED HEREON, WAS ACTUALLY MADE UPON THE GROUND UNDER MY DIRECTION AND SUPERVISION, AND THAT TO THE BEST OF MY PROFESSIONAL KNOWLEDGE AND BELIEF, THE INFORMATION SHOWN HEREON IS CORRECT AS DETERMINED BY SAID SURVEY.

THIS SURVEY SUBSTANTIALLY COMPLIES WITH THE CURRENT TEXAS SOCIETY OF PROFESSIONAL SURVEYORS STANDARDS AND SPECIFICATIONS FOR A CATEGORY 1B, CONDITION II SURVEY.


MUNIR ODHWANI
REGISTERED PROFESSIONAL LAND SURVEYOR
TEXAS REGISTRATION NO. 5996



DATE: FEBRUARY 12, 2010

LINE TABLE		
LINE	BEARING	DISTANCE
L1	N25°06'04"W	26.40'
L2	N30°42'10"W	31.06'
L3	N24°25'53"W	26.10'
L4	N27°16'38"W	28.34'
L5	N14°32'52"W	15.99'
L6	N18°35'46"E	21.19'
L7	N26°02'57"E	31.19'
L8	N27°55'32"E	33.58'
L9	N24°26'48"E	36.64'
L10	N18°03'26"W	65.87'
L11	N21°07'29"W	24.82'
L12	N33°43'24"W	37.39'
L13	N60°49'01"W	26.23'
L14	N40°11'55"W	24.85'
L15	N54°43'45"W	24.76'
L16	N36°50'40"W	36.08'
L17	N59°48'25"W	27.16'
L18	N37°52'24"W	22.88'
L19	N30°39'44"W	24.08'
L20	N41°06'26"W	32.03'
L21	N54°46'33"W	23.58'
L22	N60°18'01"W	38.89'
L23	N78°00'06"E	46.27'
L24	N57°32'46"E	41.54'
L25	N69°47'59"E	29.43'
L26	N55°58'20"E	23.68'
L27	N72°18'38"E	17.09'
L28	N82°58'37"E	23.99'
L29	S86°50'01"E	26.05'
L30	N80°36'47"E	26.06'
L31	S87°21'46"E	22.85'
L32	N82°31'32"E	32.54'
L33	N70°58'48"E	24.63'
L34	N66°38'20"E	25.54'
L35	N79°02'49"E	27.12'
L36	N66°07'50"E	29.57'
L37	N71°56'27"E	27.22'
L38	N63°10'15"E	29.69'

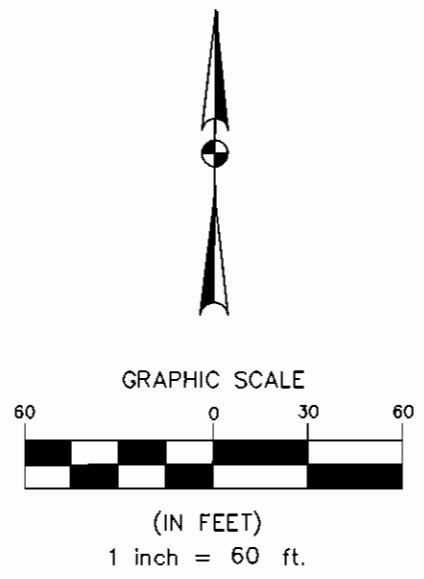
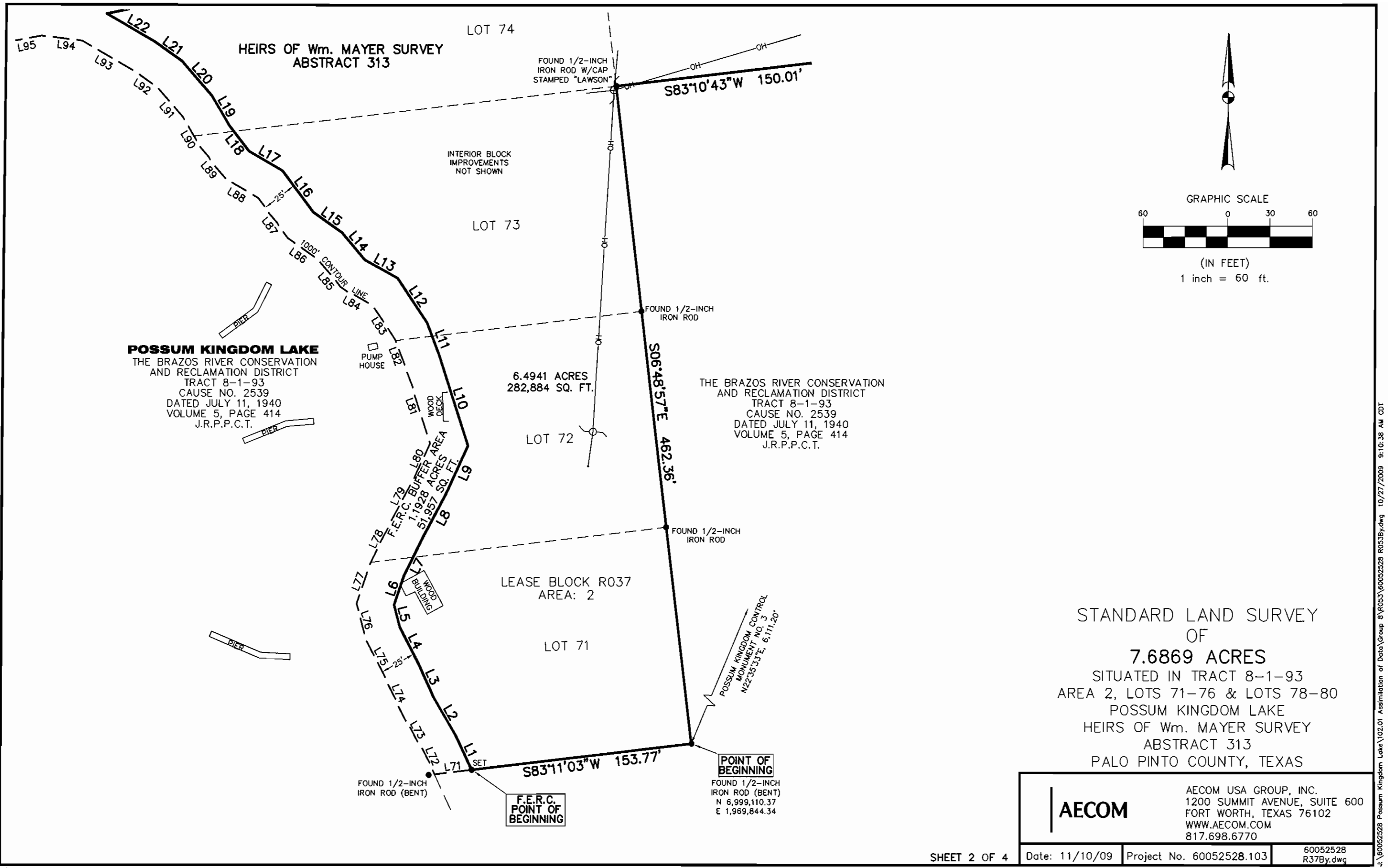
LINE TABLE		
LINE	BEARING	DISTANCE
L39	N62°34'06"E	26.93'
L40	N58°54'09"E	25.28'
L41	N70°02'34"E	29.40'
L42	N44°30'34"E	35.01'
L43	N47°22'01"E	25.77'
L44	N47°56'32"E	28.81'
L45	N46°57'26"E	28.32'
L46	N50°24'40"E	27.28'
L47	N48°48'01"E	26.83'
L48	N42°52'51"E	26.53'
L49	N35°12'09"E	19.95'
L50	N58°00'17"E	21.60'
L51	N48°19'06"E	26.74'
L52	N58°32'26"E	24.79'
L53	N65°49'37"E	24.19'
L54	N69°03'27"E	19.79'
L55	S88°29'00"E	18.86'
L56	S80°28'22"E	25.28'
L57	S77°14'58"E	25.30'
L58	S72°07'53"E	25.99'
L59	S61°22'07"E	21.80'
L60	S49°11'45"E	28.98'
L61	S56°50'02"E	25.83'
L62	S50°50'40"E	23.54'
L63	S42°19'27"E	22.29'
L64	S31°50'25"E	26.37'
L65	S47°29'02"E	27.69'
L66	S46°05'29"E	24.55'
L67	S67°32'00"E	26.89'
L68	S57°32'48"E	27.67'
L69	S83°03'37"E	26.97'
L70	S79°55'32"E	14.34'
L71	S83°11'03"W	26.33'
L72	N25°06'04"W	16.92'
L73	N30°42'10"W	31.21'
L74	N24°25'53"W	26.85'
L75	N27°16'38"W	30.51'
L76	N14°32'52"W	26.22'

LINE TABLE		
LINE	BEARING	DISTANCE
L77	N18°35'46"E	30.26'
L78	N26°02'57"E	33.22'
L79	N27°55'32"E	33.23'
L80	N24°26'48"E	26.22'
L81	N18°05'50"W	55.38'
L82	N21°07'29"W	21.44'
L83	N33°43'24"W	28.61'
L84	N60°49'01"W	24.75'
L85	N40°11'55"W	26.21'
L86	N54°43'45"W	25.51'
L87	N36°50'40"W	34.94'
L88	N59°48'25"W	26.93'
L89	N37°52'24"W	29.30'
L90	N30°39'44"W	23.37'
L91	N41°06'26"W	26.75'
L92	N54°46'33"W	19.38'
L93	N60°18'01"W	43.35'
L94	N83°08'22"W	28.80'
L95	S79°06'42"W	25.32'
L96	S58°31'52"W	26.46'
L97	S86°04'14"W	25.46'
L98	N26°00'36"W	17.91'
L99	N14°51'21"E	19.99'
L100	N69°06'54"E	26.30'
L101	S70°54'17"E	17.07'
L102	N78°35'41"E	26.36'
L103	N64°00'54"E	31.32'
L104	N84°02'06"E	28.82'
L105	N77°06'01"E	34.46'
L106	N57°32'46"E	39.91'
L107	N69°47'59"E	29.08'
L108	N55°58'20"E	24.23'
L109	N72°18'38"E	23.02'
L110	N82°58'37"E	28.55'
L111	S86°50'01"E	25.53'
L112	N80°36'47"E	25.95'
L113	S87°21'46"E	23.28'
L114	N82°31'32"E	27.81'

LINE TABLE		
LINE	BEARING	DISTANCE
L115	N70°58'48"E	21.15'
L116	N66°38'20"E	27.31'
L117	N79°02'49"E	27.01'
L118	N66°07'50"E	28.00'
L119	N71°56'27"E	26.57'
L120	N63°10'15"E	27.64'
L121	N62°34'06"E	25.99'
L122	N58°54'09"E	26.92'
L123	N70°02'34"E	26.18'
L124	N44°30'34"E	29.97'
L125	N47°22'01"E	26.52'
L126	N47°56'32"E	28.72'
L127	N46°57'26"E	28.86'
L128	N50°24'40"E	27.68'
L129	N48°48'01"E	25.19'
L130	N42°52'51"E	23.56'
L131	N35°12'09"E	23.32'
L132	N58°00'17"E	24.52'
L133	N48°19'06"E	26.86'
L134	N58°32'26"E	28.62'
L135	N65°49'37"E	26.49'
L136	N69°03'27"E	25.46'
L137	S88°29'00"E	25.58'
L138	S80°28'22"E	27.73'
L139	S77°14'58"E	27.12'
L140	S72°07'53"E	29.46'
L141	S61°22'07"E	26.82'
L142	S49°11'45"E	29.98'
L143	S56°50'02"E	25.47'
L144	S50°50'40"E	26.71'
L145	S42°19'27"E	26.45'
L146	S31°50'25"E	25.23'
L147	S47°29'02"E	24.55'
L148	S46°05'29"E	20.12'
L149	S67°32'00"E	24.34'
L150	S57°32'48"E	24.20'
L151	S83°03'37"E	21.99'
L152	S79°55'32"E	7.46'
L153	S06°45'35"E	26.12'

STANDARD LAND SURVEY
OF
7.6869 ACRES
SITUATED IN TRACT 8-1-93
AREA 2, LOTS 71-76 & LOTS 78-80
POSSUM KINGDOM LAKE
HEIRS OF Wm. MAYER SURVEY
ABSTRACT 313
PALO PINTO COUNTY, TEXAS

	AECOM USA GROUP, INC. 1200 SUMMIT AVENUE, SUITE 600 FORT WORTH, TEXAS 76102 WWW.AECOM.COM 817.698.6770
	Date: 11/11/09 Project No. 60052528.103



POSSUM KINGDOM LAKE
 THE BRAZOS RIVER CONSERVATION
 AND RECLAMATION DISTRICT
 TRACT 8-1-93
 CAUSE NO. 2539
 DATED JULY 11, 1940
 VOLUME 5, PAGE 414
 J.R.P.P.C.T.

6.4941 ACRES
 282,884 SQ. FT.

THE BRAZOS RIVER CONSERVATION
 AND RECLAMATION DISTRICT
 TRACT 8-1-93
 CAUSE NO. 2539
 DATED JULY 11, 1940
 VOLUME 5, PAGE 414
 J.R.P.P.C.T.

STANDARD LAND SURVEY
 OF
7.6869 ACRES
 SITUATED IN TRACT 8-1-93
 AREA 2, LOTS 71-76 & LOTS 78-80
 POSSUM KINGDOM LAKE
 HEIRS OF Wm. MAYER SURVEY
 ABSTRACT 313
 PALO PINTO COUNTY, TEXAS

AECOM
 AECOM USA GROUP, INC.
 1200 SUMMIT AVENUE, SUITE 600
 FORT WORTH, TEXAS 76102
 WWW.AECOM.COM
 817.698.6770

NO PART OR PARTS OF THIS DRAWING MAY BE REPRODUCED OR TRANSMITTED IN ANY WAY OR FORM (ELECTRONIC, MECHANICAL, PHOTOCOPYING, OR OTHERWISE) WITHOUT THE EXPRESS WRITTEN PERMISSION OF AECOM.

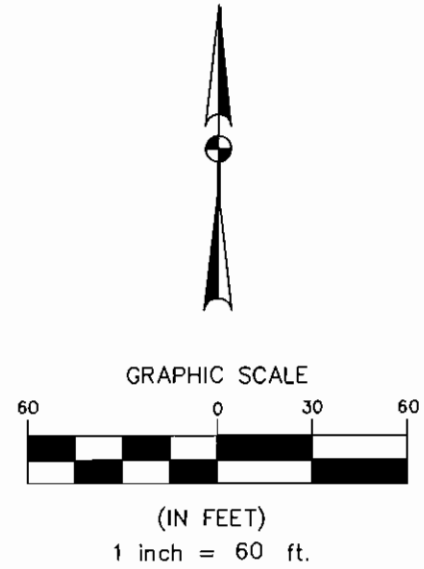
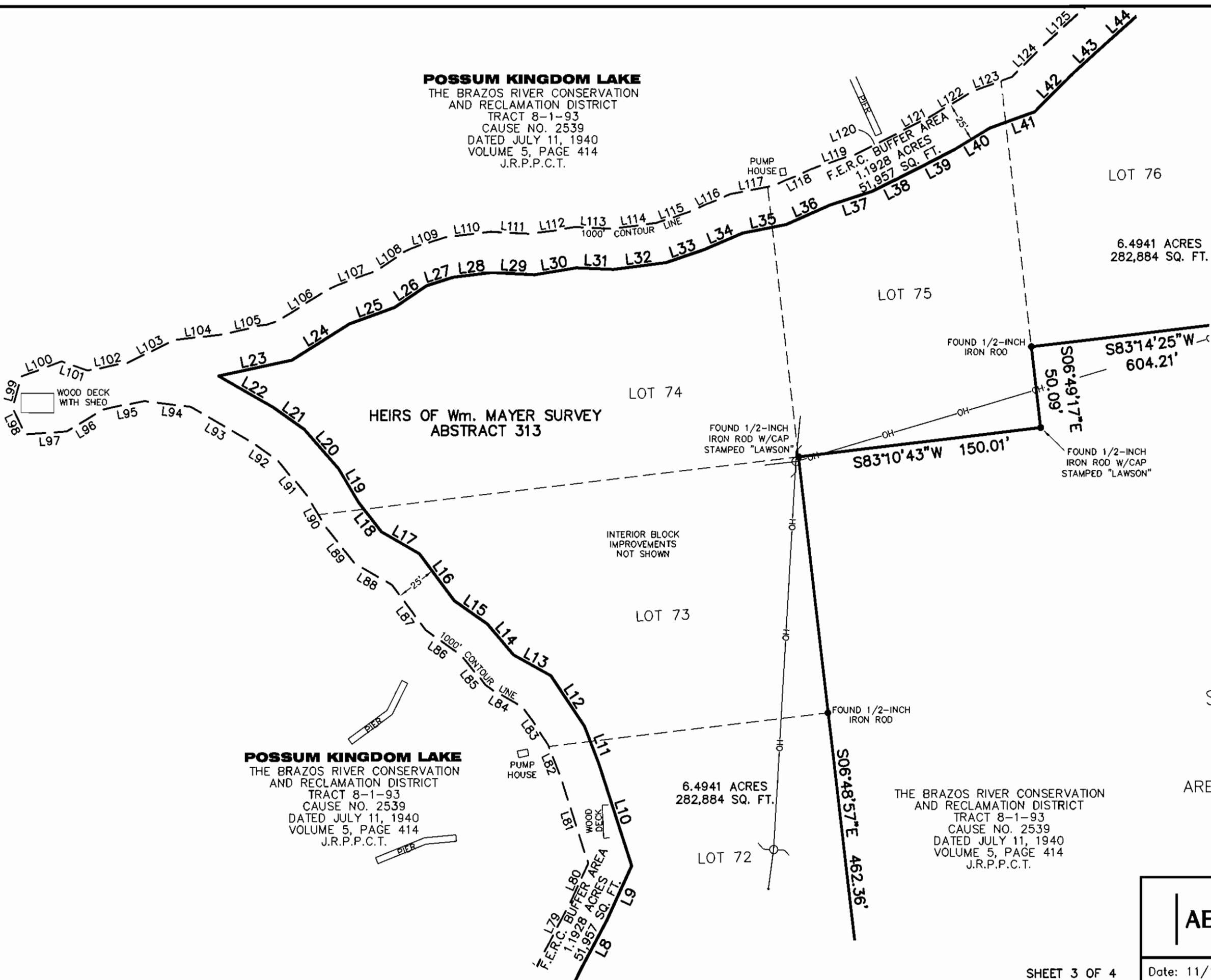
J:\60052528 Possum Kingdom Lake\102.01 Assimilation of Data\Group 8\6053\60052528 R053By.dwg 10/27/2009 9:10:38 AM CDT

POSSUM KINGDOM LAKE

THE BRAZOS RIVER CONSERVATION
AND RECLAMATION DISTRICT
TRACT 8-1-93
CAUSE NO. 2539
DATED JULY 11, 1940
VOLUME 5, PAGE 414
J.R.P.P.C.T.

POSSUM KINGDOM LAKE

THE BRAZOS RIVER CONSERVATION
AND RECLAMATION DISTRICT
TRACT 8-1-93
CAUSE NO. 2539
DATED JULY 11, 1940
VOLUME 5, PAGE 414
J.R.P.P.C.T.



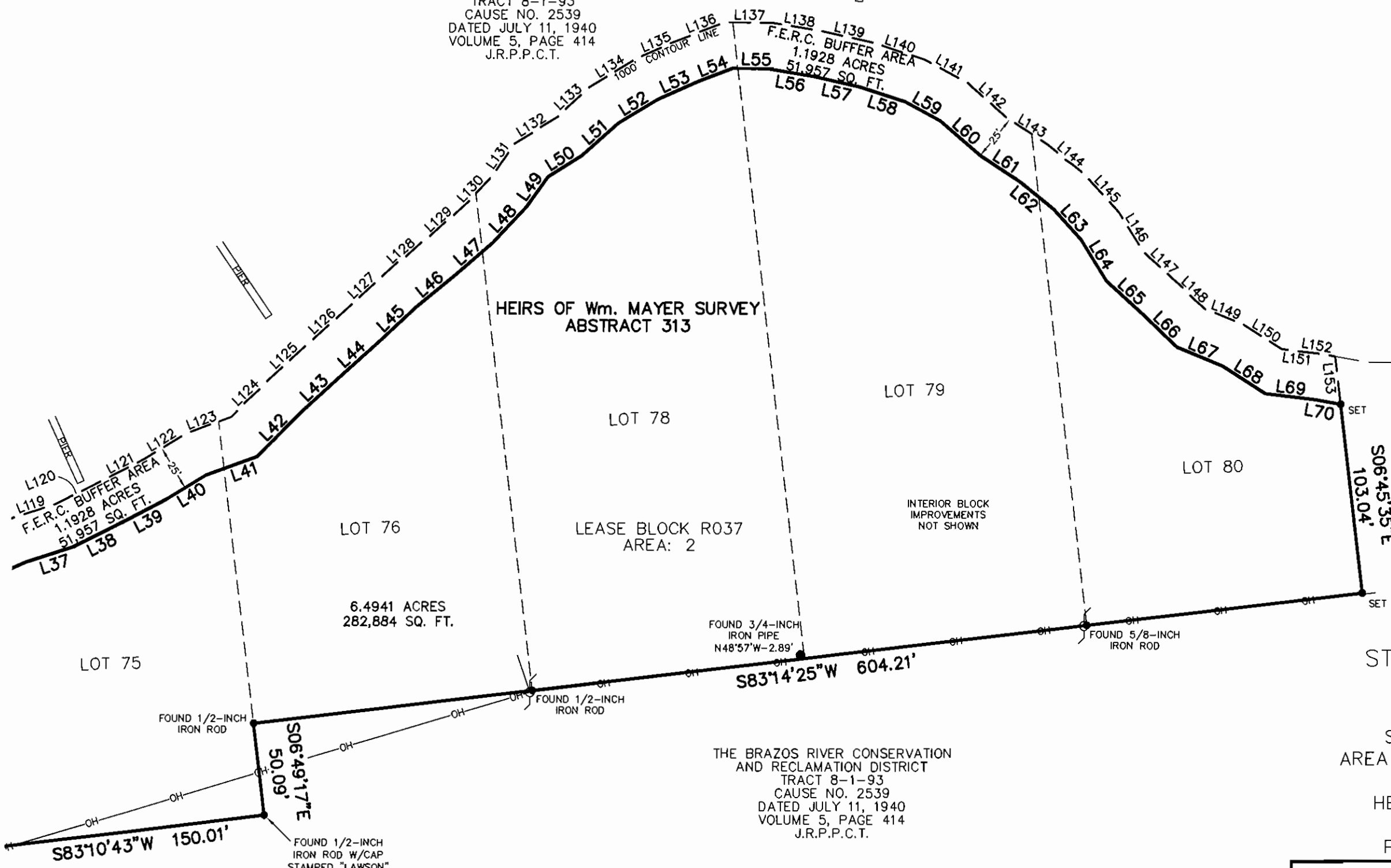
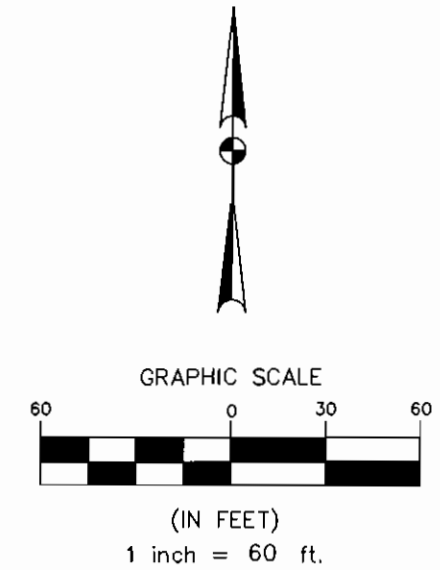
STANDARD LAND SURVEY
OF
7.6869 ACRES
SITUATED IN TRACT 8-1-93
AREA 2, LOTS 71-76 & LOTS 78-80
POSSUM KINGDOM LAKE
HEIRS OF Wm. MAYER SURVEY
ABSTRACT 313
PALO PINTO COUNTY, TEXAS

AECOM	AECOM USA GROUP, INC. 1200 SUMMIT AVENUE, SUITE 600 FORT WORTH, TEXAS 76102 WWW.AECOM.COM 817.698.6770	
	Date: 11/10/09	Project No. 60052528.103

NO PART OR PARTS OF THIS DRAWING MAY BE REPRODUCED OR RETRANSMITTED IN ANY WAY OR FORM (ELECTRONIC, MECHANICAL, PHOTOCOPYING, OR OTHERWISE) WITHOUT THE EXPRESS WRITTEN PERMISSION OF AECOM.

J:\60052528 Possum Kingdom Lake\02.01 Assimilation of Data\Group 8\6053\60052528 R03By.dwg 10/27/2009 9:10:38 AM CDT

POSSUM KINGDOM LAKE
 THE BRAZOS RIVER CONSERVATION
 AND RECLAMATION DISTRICT
 TRACT 8-1-93
 CAUSE NO. 2539
 DATED JULY 11, 1940
 VOLUME 5, PAGE 414
 J.R.P.P.C.T.



STANDARD LAND SURVEY
 OF
7.6869 ACRES
 SITUATED IN TRACT 8-1-93
 AREA 2, LOTS 71-76 & LOTS 78-80
 POSSUM KINGDOM LAKE
 HEIRS OF Wm. MAYER SURVEY
 ABSTRACT 313
 PALO PINTO COUNTY, TEXAS

THE BRAZOS RIVER CONSERVATION
 AND RECLAMATION DISTRICT
 TRACT 8-1-93
 CAUSE NO. 2539
 DATED JULY 11, 1940
 VOLUME 5, PAGE 414
 J.R.P.P.C.T.

AECOM	AECOM USA GROUP, INC. 1200 SUMMIT AVENUE, SUITE 600 FORT WORTH, TEXAS 76102 WWW.AECOM.COM 817.698.6770	
	Date: 11/10/09	Project No. 60052528.103

NO PART OR PARTS OF THIS DRAWING MAY BE REPRODUCED OR TRANSMITTED IN ANY WAY OR FORM (ELECTRONIC, MECHANICAL, PHOTOCOPYING, OR OTHERWISE) WITHOUT THE EXPRESS WRITTEN PERMISSION OF AECOM.

J:\60052528 Possum Kingdom Lake\102.01 Assimilation of Data\Group 8\60053\60052528 R0538y.dwg 10/27/2009 9:10:38 AM CDT