

VICINITY MAP NOT TO SCALE

NOTES:

- 1) BEARINGS AND COORDINATES SHOWN HEREON ARE BASED ON THE NORTH AMERICAN DATUM OF 1983, TEXAS COORDINATE SYSTEM, NORTH CENTRAL ZONE (4202).
- 2) 1,000-FOOT CONTOUR ELEVATION OF POSSUM KINGDOM LAKE IS DETERMINED BASED ON MEASUREMENTS FROM THE TOP OF THE EXISTING SPILLWAY CREST GATES AT THE MORRIS SHEPPARD DAM BEING AT ELEVATION 1,000- FEET ABOVE MEAN SEA LEVEL AS NOTED IN FEDERAL POWER COMMISSION REPORT PROJECT NO. 1490 - TEXAS ON JUNE 2, 1938.
- 3) SET = 5/8" IRON ROD W/CAP STAMPED "AECOM" SET; D.R.P.P.C.T.= DEED RECORDS, PALO PINTO COUNTY, TEXAS; P.R.P.P.C.T.= PLAT RECORDS, PALO PINTO COUNTY, TEXAS; F.E.R.C.= FEDERAL ENERGY REGULATORY COMMISSION; J.R.P.P.C.T.= JUDGMENT RECORDS, PALO PINTO COUNTY, TEXAS.
- 4) METES AND BOUNDS DESCRIPTIONS TO ACCOMPANY THIS SURVEY.

SURVEYORS CERTIFICATE

TO: BRAZOS RIVER AUTHORITY, PATTERSON PK LAND PARTNERSHIP, LTD., AND HERITAGE TITLE COMPANY OF AUSTIN, INC.

I, MUNIR ODHWANI, A REGISTERED PROFESSIONAL LAND SURVEYOR IN THE STATE OF TEXAS, REGISTRATION NUMBER 5996, HEREBY STATE THAT A SURVEY OF THE REAL PROPERTY DESCRIBED IN SEPARATE LEGAL DESCRIPTION AS NOTED HEREON, WAS ACTUALLY MADE UPON THE GROUND UNDER MY DIRECTION AND SUPERVISION, AND THAT TO THE BEST OF MY PROFESSIONAL KNOWLEDGE AND BELIEF, THE INFORMATION SHOWN HEREON IS CORRECT AS DETERMINED BY SAID SURVEY.

THIS SURVEY SUBSTANTIALLY COMPLIES WITH THE CURRENT TEXAS SOCIETY OF PROFESSIONAL SURVEYORS STANDARDS AND SPECIFICATIONS FOR A CATEGORY 1B, CONDITION II SURVEY.

Munir Odhwani

MUNIR ODHWANI
REGISTERED PROFESSIONAL LAND SURVEYOR
TEXAS REGISTRATION NO. 5996

DATE: FEBRUARY 12, 2010



LINE	BEARING	DISTANCE
L1	N50°15'23"E	12.38'
L2	N51°37'27"E	22.02'
L3	N53°54'29"E	28.55'
L4	N45°53'36"E	30.85'
L5	N23°36'17"E	25.57'
L6	N38°15'39"E	23.18'
L7	N37°33'50"E	22.71'
L8	N37°47'05"E	38.18'
L9	N30°48'07"E	31.88'
L10	N34°11'33"E	31.65'
L11	N28°13'51"E	41.02'
L12	N20°47'52"E	28.91'
L13	N30°57'57"E	43.98'
L14	N23°33'34"E	11.36'
L15	S56°31'42"E	10.11'
L16	S32°22'11"E	21.66'
L17	S22°32'11"E	36.57'
L18	S12°47'22"E	30.65'
L19	S36°07'24"E	36.81'
L20	S34°32'52"E	29.58'
L21	S08°50'17"E	26.16'
L22	S39°29'12"E	26.32'
L23	S17°41'13"E	26.10'
L24	S21°23'09"E	28.39'
L25	S18°03'48"E	20.81'
L26	S13°47'31"W	27.28'
L27	S06°12'15"W	21.13'
L28	S18°21'14"W	23.18'
L29	S24°48'27"W	24.97'
L30	S18°06'38"W	31.17'
L31	S15°20'08"W	29.60'
L32	S02°00'08"E	25.21'
L33	S01°25'05"E	23.21'
L34	S06°49'54"W	23.52'
L35	S03°36'49"E	34.57'
L36	S14°03'24"E	31.08'
L37	S05°58'37"E	20.54'
L38	S02°09'36"E	25.73'
L39	S03°15'48"W	23.39'
L40	S03°52'35"E	24.63'
L41	S13°13'34"W	20.78'
L42	S19°17'47"W	18.39'
L43	S37°31'15"W	19.72'
L44	S37°21'14"W	23.48'
L45	S51°36'24"W	33.09'
L46	S59°37'35"W	15.40'

LINE	BEARING	DISTANCE
L47	S55°55'04"W	25.02'
L48	S53°55'50"W	28.65'
L49	S51°56'35"W	27.33'
L50	S54°04'26"W	15.20'
L51	S48°00'11"W	30.28'
L52	S41°11'57"W	29.45'
L53	S30°16'46"W	24.81'
L54	S34°06'37"W	27.38'
L55	S16°01'24"W	32.48'
L56	S21°16'16"W	27.53'
L57	S10°37'23"W	27.77'
L58	S00°56'31"E	27.42'
L59	S08°13'08"W	21.57'
L60	S07°39'38"W	25.25'
L61	S00°41'05"E	26.94'
L62	S04°35'39"E	27.85'
L63	S03°51'35"E	25.87'
L64	S02°55'00"E	21.00'
L65	S11°13'22"W	24.81'
L66	S01°31'57"E	22.99'
L67	S09°11'32"W	24.74'
L68	S02°22'38"E	19.32'
L69	S14°16'00"W	20.97'
L70	S16°04'35"W	22.93'
L71	S17°51'45"W	18.80'
L72	S28°23'14"W	21.03'
L73	S24°13'29"W	24.05'
L74	S30°11'22"W	25.53'
L75	S18°58'11"W	30.22'
L76	S20°43'49"W	26.38'
L77	S06°32'47"W	22.25'
L78	S05°58'46"W	17.67'
L79	S00°09'04"E	23.69'
L80	S08°41'51"W	20.75'
L81	S02°28'00"W	24.21'
L82	S02°40'06"E	17.39'
L83	S17°57'14"W	19.63'
L84	S08°19'51"W	20.64'
L85	S21°24'12"W	25.19'
L86	S08°59'09"W	21.60'
L87	S32°09'39"W	23.86'
L88	S26°55'58"W	25.14'
L89	S29°42'35"W	24.16'
L90	S23°36'37"W	23.94'
L91	S24°49'18"W	28.43'
L92	S20°35'55"W	32.70'
L93	S09°42'46"W	25.59'

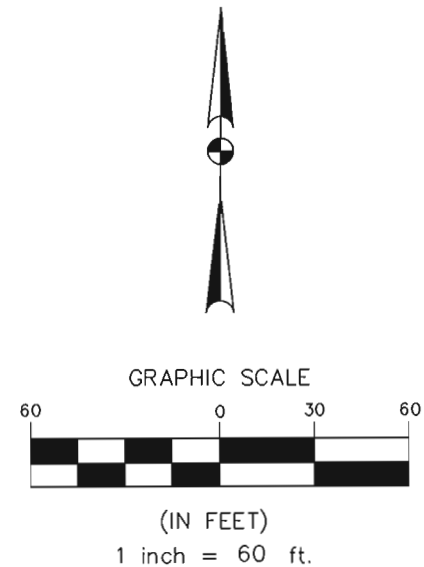
LINE	BEARING	DISTANCE
L94	S20°31'44"W	25.08'
L95	S12°35'32"W	26.00'
L96	S11°14'21"W	25.95'
L97	S20°16'12"W	12.00'
L98	S56°59'14"W	3.25'
L99	S13°18'30"W	24.91'
L100	S17°25'47"W	5.90'
L101	S31°39'03"W	21.25'
L102	N38°26'25"W	16.99'
L103	N27°06'37"W	20.13'
L104	N17°28'10"W	20.92'
L105	N24°51'14"W	25.86'
L106	N32°31'12"W	30.22'
L107	N47°29'56"W	41.23'
L108	N80°10'25"W	33.37'
L109	S78°34'13"W	29.38'
L110	S69°53'27"W	21.98'
L111	S57°18'56"W	35.69'
L112	S12°49'04"W	36.48'
L113	S13°12'55"W	20.61'
L114	S30°18'42"W	8.50'
L115	S27°14'35"W	18.64'
L116	S26°48'24"W	9.11'
L117	S41°18'31"W	6.80'
L118	S64°44'20"W	5.95'
L119	N59°53'53"W	6.77'
L120	N66°19'55"W	24.88'
L121	N72°54'18"W	14.64'
L122	N56°12'41"W	20.11'
L123	N58°08'29"W	15.18'
L124	N32°38'32"W	16.22'
L125	N27°41'21"W	21.27'
L126	N39°10'58"W	35.99'
L127	N85°57'13"W	39.67'
L128	S79°18'20"W	28.71'
L129	S72°35'23"W	19.08'
L130	N89°29'11"W	11.06'
L131	N82°34'13"W	22.85'
L132	N65°55'55"W	6.87'
L133	N15°20'12"W	4.61'
L134	N07°16'20"E	16.53'
L135	N06°20'35"E	22.51'
L136	N13°52'12"E	25.17'
L137	N05°05'50"E	34.39'
L138	N29°14'11"W	36.26'
L139	N59°46'18"W	40.01'

LINE	BEARING	DISTANCE
L140	N81°28'07"W	34.84'
L141	S82°37'26"W	43.51'
L142	S78°04'23"W	22.65'
L143	N85°56'53"W	14.18'
L144	N62°12'02"W	13.25'
L145	N49°54'15"W	17.51'
L146	N25°43'33"W	21.96'
L147	N36°16'40"W	14.59'
L148	N26°13'52"W	41.04'
L149	N47°33'04"W	23.29'
L150	N49°59'49"W	22.41'
L151	N33°51'09"W	32.95'
L152	N67°49'17"W	36.36'
L153	N89°49'07"W	21.51'
L154	S87°43'26"W	42.76'
L155	N59°38'38"W	26.69'
L156	N64°16'44"E	0.39'
L157	N50°15'23"E	21.39'
L158	N51°37'27"E	22.82'
L159	N53°54'29"E	27.29'
L160	N45°53'36"E	24.17'
L161	N23°36'17"E	23.86'
L162	N38°15'39"E	26.24'
L163	N37°33'50"E	22.61'
L164	N37°47'05"E	36.71'
L165	N30°48'07"E	31.10'
L166	N34°11'33"E	31.08'
L167	N28°13'51"E	38.09'
L168	N20°47'52"E	29.51'
L169	N30°57'57"E	44.59'
L170	N23°33'34"E	30.03'
L171	N87°06'29"E	15.72'
L172	S56°31'42"E	30.92'
L173	S32°22'11"E	29.16'
L174	S22°32'11"E	40.85'
L175	S12°47'22"E	27.62'
L176	S36°07'24"E	31.99'
L177	S34°32'52"E	35.63'
L178	S08°50'17"E	25.02'
L179	S39°29'12"E	24.29'
L180	S17°41'13"E	30.11'
L181	S21°23'09"E	28.31'
L182	S18°03'48"E	28.67'
L183	S13°47'31"W	32.76'
L184	S06°12'15"W	22.13'
L185	S18°21'14"W	27.25'

LINE	BEARING	DISTANCE
L186	S24°48'27"W	24.92'
L187	S18°06'38"W	29.10'
L188	S15°20'08"W	25.18'
L189	S02°00'08"E	21.52'
L190	S01°25'05"E	25.14'
L191	S06°49'54"W	23.03'
L192	S03°36'49"E	30.00'
L193	S14°03'24"E	30.56'
L194	S05°58'37"E	23.13'
L195	S02°09'36"E	27.75'
L196	S03°15'48"W	23.01'
L197	S03°52'35"E	26.83'
L198	S13°13'34"W	25.87'
L199	S19°17'47"W	23.72'
L200	S37°31'15"W	23.69'
L201	S37°21'14"W	26.57'
L202	S51°36'24"W	29.27'
L203	S68°39'34"E	1.55'
L204	S59°37'35"W	25.92'
L205	S55°55'04"W	23.78'
L206	S53°55'50"W	27.79'
L207	S51°56'35"W	27.36'
L208	S54°04'26"W	14.34'
L209	S48°00'11"W	27.47'
L210	S41°11'57"W	25.57'
L211	S30°16'46"W	23.26'
L212	S34°06'37"W	24.24'
L213	S16°01'24"W	29.65'
L214	S21°16'16"W	26.34'
L215	S10°37'23"W	22.91'
L216	S00°56'31"E	26.89'
L217	S08°13'08"W	23.45'
L218	S07°39'38"W	23.31'
L219	S00°41'05"E	24.27'
L220	S04°35'39"E	27.16'
L221	S03°51'35"E	26.23'
L222	S02°55'00"E	24.31'
L223	S11°13'22"W	25.12'
L224	S01°31'57"E	22.55'
L225	S09°11'32"W	24.56'
L226	S02°22'38"E	20.44'
L227	S14°16'00"W	25.02'
L228	S16°04'35"W	23.71'
L229	S17°51'45"W	21.49'
L230	S28°23'14"W	22.42'
L231	S24°13'29"W	24.44'

LINE	BEARING	DISTANCE
L232	S30°11'22"W	24.38'
L233	S18°58'11"W	28.15'
L234	S20°43'49"W	23.65'
L235	S06°32'47"W	19.02'
L236	S05°58'46"W	16.20'
L237	S00°09'04"E	24.29'
L238	S08°41'51"W	21.32'
L239	S02°28'00"W	21.72'
L240	S02°40'06"E	20.81'
L241	S17°57'14"W	22.08'
L242	S08°19'51"W	21.40'
L243	S21°24'12"W	25.34'
L244	S08°59'09"W	24.00'
L245	S32°09'39"W	27.84'
L246	S26°55'58"W	24.60'
L247	S29°42'35"W	23.43'
L248	S23°36'37"W	22.87'
L249	S24°49'18"W	27.77'
L250	S20°35'55"W	29.40'
L251	S09°42'46"W	25.57'
L252	S20°31'44"W	25.71'
L253	S12°35'32"W	23.97'
L254	S11°14'21"W	27.63'
L255	S20°16'12"W	22.27'
L256	S56°59'14"W	1.53'
L257	S13°18'30"W	15.79'
L258	S17°25'47"W	9.97'
L259	S31°34'10"W	31.58'
L260	S42°49'25"W	13.18'
L261	S88°57'57"W	13.91'
L262	N47°38'01"W	16.48'
L263	N38°26'25"W	22.78'
L264	N27°06'37"W	24.72'
L265	N17°28'10"W	21.42'
L266	N24°51'14"W	22.57'
L267	N32°31'12"W	25.26'
L268	N47°29'56"W	30.62'
L269	N80°10'25"W	21.35'
L270	S78°34'13"W	22.79'
L271	S69°53'27"W	17.33'
L272	S57°18'56"W	22.71'
L273	S12°49'04"W	26.34'
L274	S13°12'55"W	24.46'
L275	S30°18'42"W	11.59'
L276	S27°14'35"W	17.87'
L277	S26°48'24"W	12.20'

LINE	BEARING	DISTANCE
L278	S41°18'31"W	15.17'
L279	S64°44'20"W	16.12'
L280	S65°38'47"W	8.23'
L281	N59°53'53"W	18.33'
L282	N66°19'55"W	22.04'
L283	N72°54'18"W	16.88'
L284	N56°12'41"W	23.36'
L285	N58°08'29"W	20.41'
L286	N32°38'32"W	22.96'
L287	N27°41'21"W	19.83'
L288	N39°10'58"W	22.67'
L289	N85°57'13"W	25.62'
L290	S79°18'20"W	24.01'
L291	S72°35'23"W	21.55'
L292	N89°29'11"W	16.51'
L293	N82°34'13"W	28.02'
L294	N65°55'55"W	22.35'
L295	N15°20'	

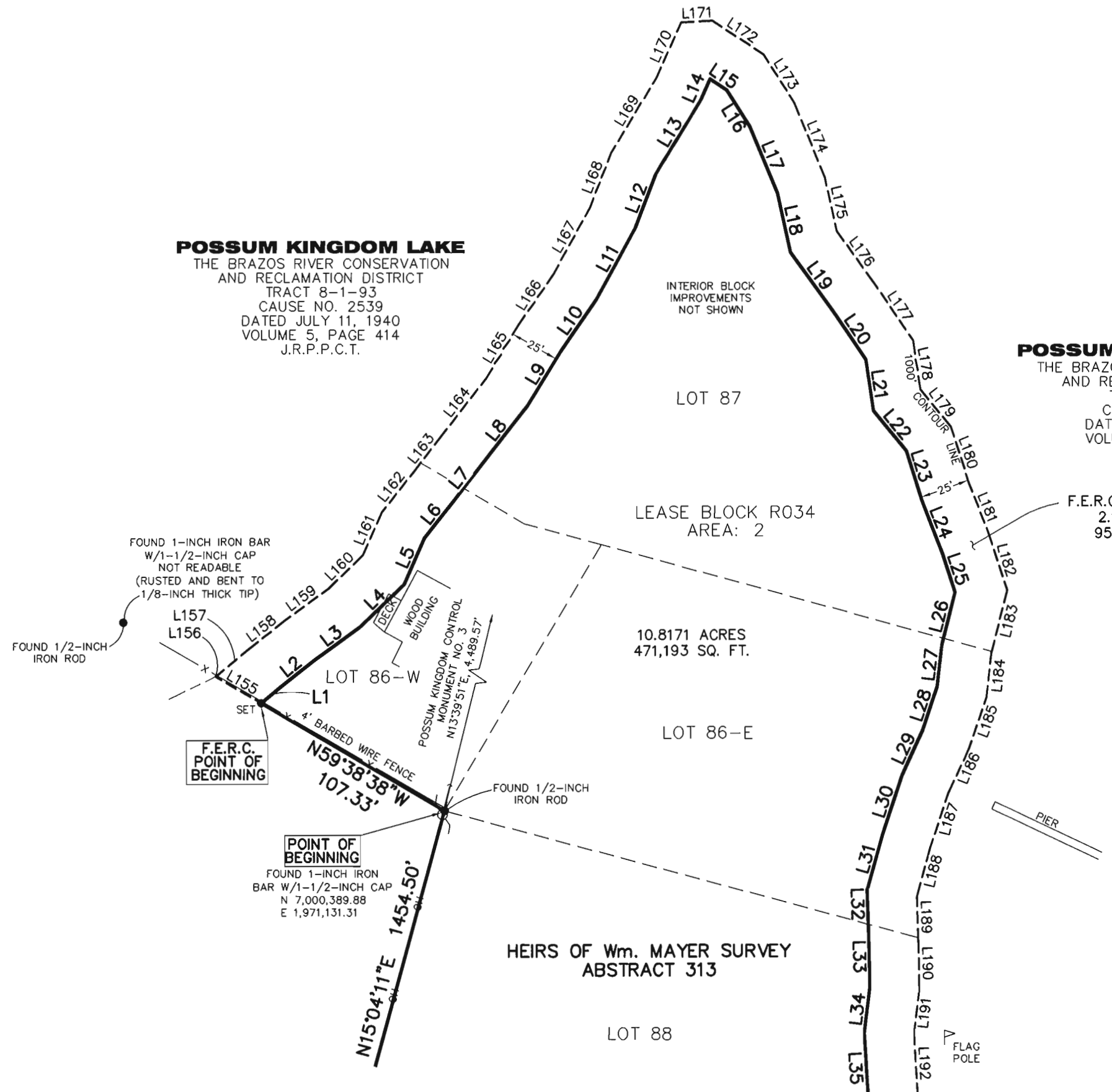


POSSUM KINGDOM LAKE

THE BRAZOS RIVER CONSERVATION
AND RECLAMATION DISTRICT
TRACT 8-1-93
CAUSE NO. 2539
DATED JULY 11, 1940
VOLUME 5, PAGE 414
J.R.P.C.T.

POSSUM KINGDOM LAKE

THE BRAZOS RIVER CONSERVATION
AND RECLAMATION DISTRICT
TRACT 8-1-93
CAUSE NO. 2539
DATED JULY 11, 1940
VOLUME 5, PAGE 414
J.R.P.C.T.



LOT 87
LEASE BLOCK R034
AREA: 2
10.8171 ACRES
471,193 SQ. FT.

F.E.R.C. BUFFER AREA
2.1886 ACRES
95,336 SQ. FT.

POINT OF BEGINNING
FOUND 1-INCH IRON
BAR W/1-1/2-INCH CAP
N 7,000,389.88
E 1,971,131.31

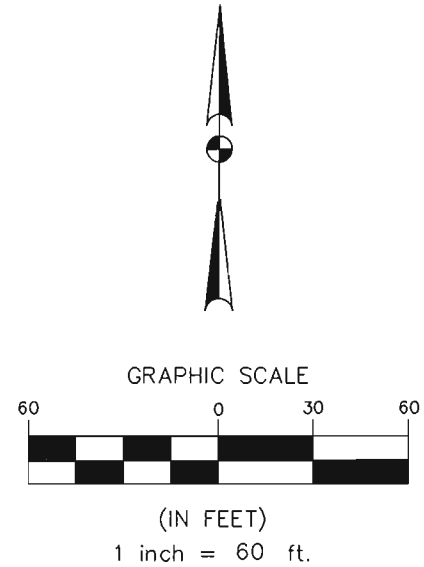
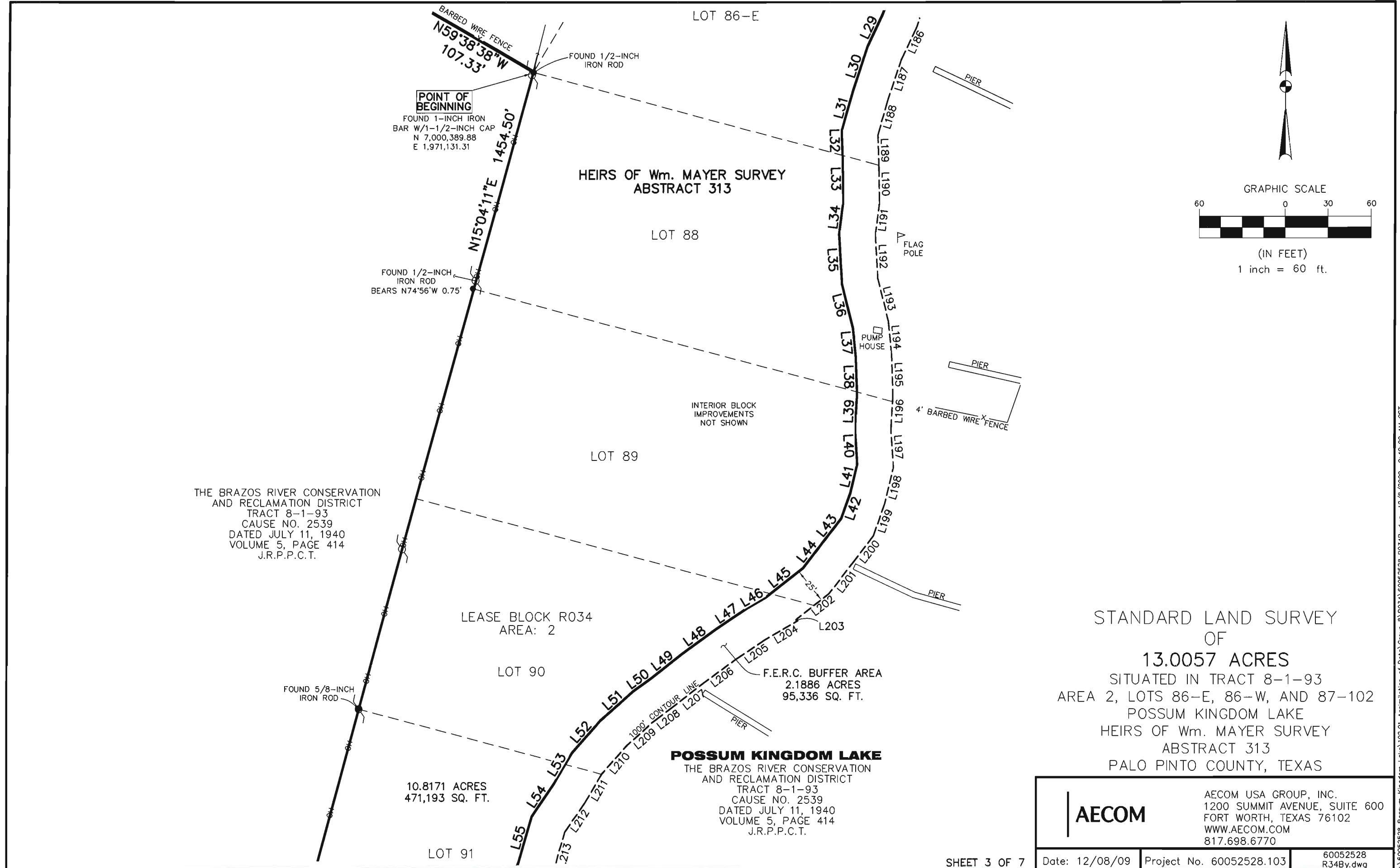
F.E.R.C. POINT OF BEGINNING

STANDARD LAND SURVEY
OF
13.0057 ACRES
SITUATED IN TRACT 8-1-93
AREA 2, LOTS 86-E, 86-W, AND 87-102
POSSUM KINGDOM LAKE
HEIRS OF Wm. MAYER SURVEY
ABSTRACT 313
PALO PINTO COUNTY, TEXAS

AECOM	AECOM USA GROUP, INC. 1200 SUMMIT AVENUE, SUITE 600 FORT WORTH, TEXAS 76102 WWW.AECOM.COM 817.698.6770	
	Date: 12/08/09	Project No. 60052528.103

NO PART OR PARTS OF THIS DRAWING MAY BE REPRODUCED OR TRANSMITTED IN ANY WAY OR FORM (ELECTRONIC, MECHANICAL, PHOTOCOPYING, OR OTHERWISE) WITHOUT THE EXPRESS WRITTEN PERMISSION OF AECOM.

J:\60052528 Possum Kingdom Lake\102.01 Assimilation of Data\Group 8\RO34\60052528 RO34By.dwg 12/8/2009 9:40:00 AM CST



THE BRAZOS RIVER CONSERVATION AND RECLAMATION DISTRICT TRACT 8-1-93 CAUSE NO. 2539 DATED JULY 11, 1940 VOLUME 5, PAGE 414 J.R.P.P.C.T.

10.8171 ACRES
471,193 SQ. FT.

LEASE BLOCK R034
AREA: 2

F.E.R.C. BUFFER AREA
2.1886 ACRES
95,336 SQ. FT.

POSSUM KINGDOM LAKE
THE BRAZOS RIVER CONSERVATION AND RECLAMATION DISTRICT TRACT 8-1-93 CAUSE NO. 2539 DATED JULY 11, 1940 VOLUME 5, PAGE 414 J.R.P.P.C.T.

STANDARD LAND SURVEY OF
13.0057 ACRES
SITUATED IN TRACT 8-1-93
AREA 2, LOTS 86-E, 86-W, AND 87-102
POSSUM KINGDOM LAKE
HEIRS OF Wm. MAYER SURVEY
ABSTRACT 313
PALO PINTO COUNTY, TEXAS

AECOM	AECOM USA GROUP, INC. 1200 SUMMIT AVENUE, SUITE 600 FORT WORTH, TEXAS 76102 WWW.AECOM.COM 817.698.6770	
	Date: 12/08/09	Project No. 60052528.103

NO PART OR PARTS OF THIS DRAWING MAY BE REPRODUCED OR RETRANSMITTED IN ANY WAY OR FORM (ELECTRONIC, MECHANICAL, PHOTOCOPYING, OR OTHERWISE) WITHOUT THE EXPRESS WRITTEN PERMISSION OF AECOM.

J:\60052528 Possum Kingdom Lake\102.01 Assimilation of Data\Group 8\R034\60052528 R034By.dwg 12/8/2009 9:40:00 AM CST

LOT 93

LEASE BLOCK R034
AREA: 2

LOT 94

10.8171 ACRES
471,193 SQ. FT.

LOT 95

POSSUM KINGDOM LAKE

THE BRAZOS RIVER CONSERVATION
AND RECLAMATION DISTRICT
TRACT 8-1-93
CAUSE NO. 2539
DATED JULY 11, 1940
VOLUME 5, PAGE 414
J.R.P.P.C.T.

HEIRS OF Wm. MAYER SURVEY
ABSTRACT 313

LOT 96

F.E.R.C. BUFFER AREA
2.1886 ACRES
95,336 SQ. FT.

STANDARD LAND SURVEY
OF

13.0057 ACRES

SITUATED IN TRACT 8-1-93
AREA 2, LOTS 86-E, 86-W, AND 87-102
POSSUM KINGDOM LAKE
HEIRS OF Wm. MAYER SURVEY
ABSTRACT 313
PALO PINTO COUNTY, TEXAS

LOT 97

INTERIOR BLOCK
IMPROVEMENTS
NOT SHOWN

THE BRAZOS RIVER CONSERVATION
AND RECLAMATION DISTRICT
TRACT 8-1-93
CAUSE NO. 2539
DATED JULY 11, 1940
VOLUME 5, PAGE 414
J.R.P.P.C.T.

FOUND 1/2-INCH
IRON PIPE

FOUND 3/4-INCH
IRON PIPE
(BENT)

N15°04'11"E
1454.50'

4' BARBED WIRE FENCE

4' BARBED WIRE FENCE

1000' CONTOUR
L252 L251

BLDG.

BLDG.

BLDG.

BLDG.

FLAG
POLE

PIER

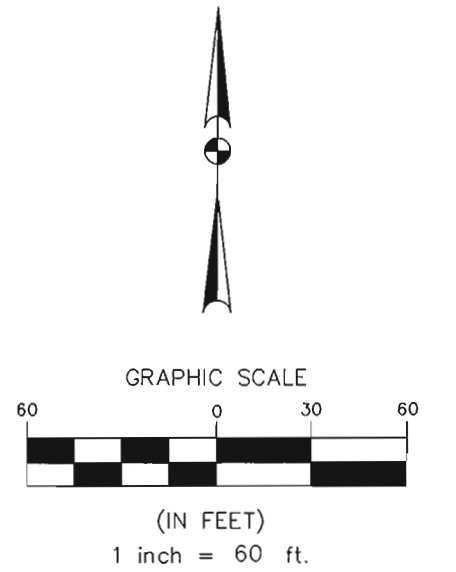
FOUND 1-INCH
IRON PIPE
(BENT)

25'

PIER

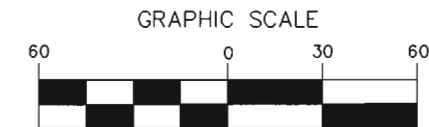
PIER

PIER

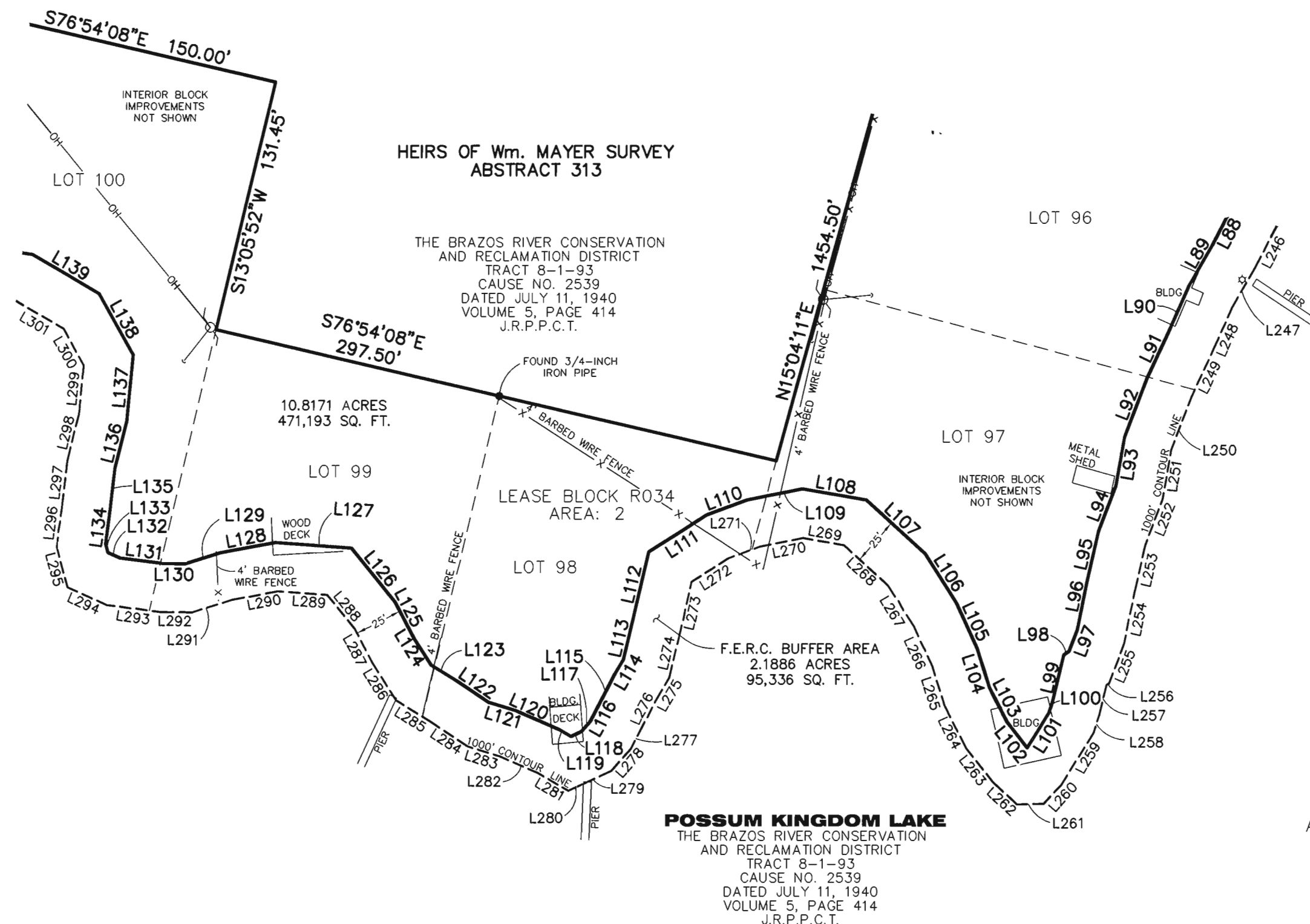


AECOM

AECOM USA GROUP, INC.
1200 SUMMIT AVENUE, SUITE 600
FORT WORTH, TEXAS 76102
WWW.AECOM.COM
817.698.6770



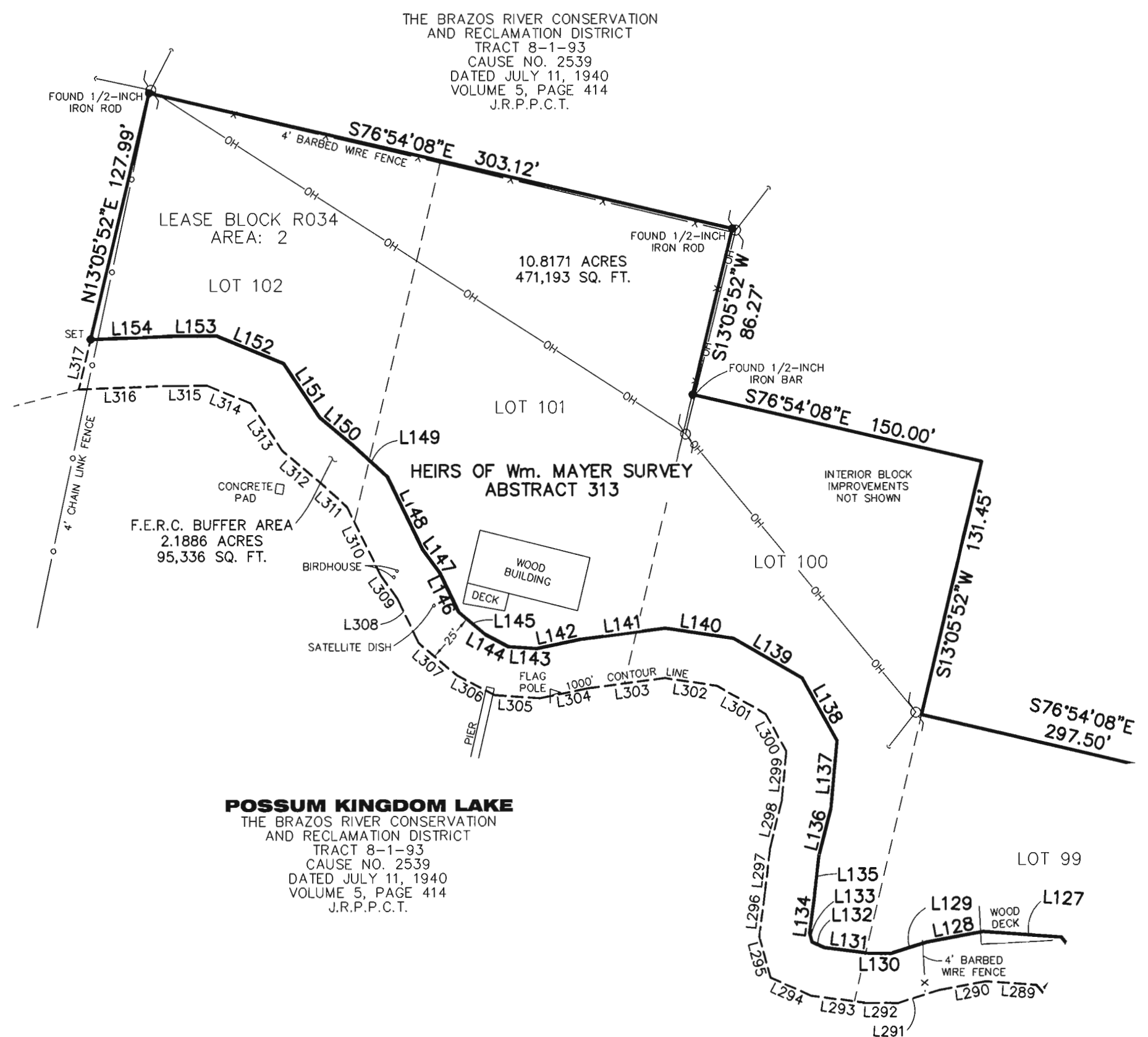
(IN FEET)
1 inch = 60 ft.



STANDARD LAND SURVEY
OF
13.0057 ACRES
SITUATED IN TRACT 8-1-93
AREA 2, LOTS 86-E, 86-W, AND 87-102
POSSUM KINGDOM LAKE
HEIRS OF Wm. MAYER SURVEY
ABSTRACT 313
PALO PINTO COUNTY, TEXAS

POSSUM KINGDOM LAKE
THE BRAZOS RIVER CONSERVATION
AND RECLAMATION DISTRICT
TRACT 8-1-93
CAUSE NO. 2539
DATED JULY 11, 1940
VOLUME 5, PAGE 414
J.R.P.P.C.T.

AECOM	AECOM USA GROUP, INC. 1200 SUMMIT AVENUE, SUITE 600 FORT WORTH, TEXAS 76102 WWW.AECOM.COM 817.698.6770	
	Date: 12/08/09	Project No. 60052528.103



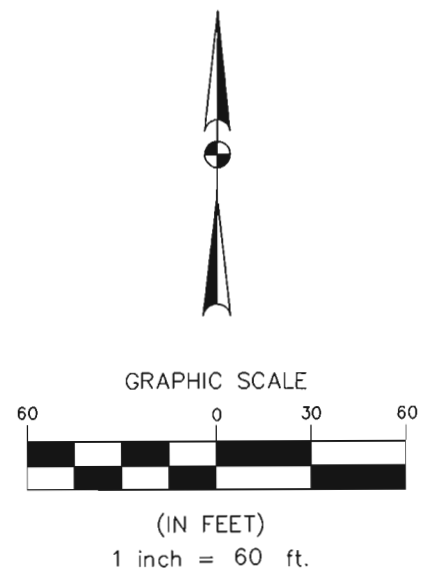
THE BRAZOS RIVER CONSERVATION
AND RECLAMATION DISTRICT
TRACT 8-1-93
CAUSE NO. 2539
DATED JULY 11, 1940
VOLUME 5, PAGE 414
J.R.P.P.C.T.

LEASE BLOCK R034
AREA: 2

F.E.R.C. BUFFER AREA
2.1886 ACRES
95,336 SQ. FT.

POSSUM KINGDOM LAKE
THE BRAZOS RIVER CONSERVATION
AND RECLAMATION DISTRICT
TRACT 8-1-93
CAUSE NO. 2539
DATED JULY 11, 1940
VOLUME 5, PAGE 414
J.R.P.P.C.T.

STANDARD LAND SURVEY
OF
13.0057 ACRES
SITUATED IN TRACT 8-1-93
AREA 2, LOTS 86-E, 86-W, AND 87-102
POSSUM KINGDOM LAKE
HEIRS OF Wm. MAYER SURVEY
ABSTRACT 313
PALO PINTO COUNTY, TEXAS



AECOM	AECOM USA GROUP, INC. 1200 SUMMIT AVENUE, SUITE 600 FORT WORTH, TEXAS 76102 WWW.AECOM.COM 817.698.6770	
	Date: 12/08/09	Project No. 60052528.103