

VICINITY MAP
NOT TO SCALE

NOTES:

- 1) BEARINGS AND COORDINATES SHOWN HEREON ARE BASED ON THE NORTH AMERICAN DATUM OF 1983, TEXAS COORDINATE SYSTEM, NORTH CENTRAL ZONE (4202).
- 2) 1,000-FOOT CONTOUR ELEVATION OF POSSUM KINGDOM LAKE IS DETERMINED BASED ON MEASUREMENTS FROM THE TOP OF THE EXISTING SPILLWAY CREST GATES AT THE MORRIS SHEPPARD DAM BEING AT ELEVATION 1,000-FEET ABOVE MEAN SEA LEVEL AS NOTED IN FEDERAL POWER COMMISSION REPORT PROJECT NO. 1490 - TEXAS ON JUNE 2, 1938.
- 3) SET = 5/8" IRON ROD W/CAP STAMPED "AECOM" SET; D.R.P.P.C.T.= DEED RECORDS, PALO PINTO COUNTY, TEXAS; P.R.P.P.C.T.= PLAT RECORDS, PALO PINTO COUNTY, TEXAS; F.E.R.C.= FEDERAL ENERGY REGULATORY COMMISSION; J.R.P.P.C.T.= JUDGEMENT RECORDS, PALO PINTO COUNTY, TEXAS.
- 4) METES AND BOUNDS DESCRIPTIONS TO ACCOMPANY THIS SURVEY.

SURVEYORS CERTIFICATE

TO: BRAZOS RIVER AUTHORITY, PATTERSON PK LAND PARTNERSHIP, LTD., AND HERITAGE TITLE COMPANY OF AUSTIN, INC.

I, MUNIR ODHWANI, A REGISTERED PROFESSIONAL LAND SURVEYOR IN THE STATE OF TEXAS, REGISTRATION NUMBER 5996, HEREBY STATE THAT A SURVEY OF THE REAL PROPERTY DESCRIBED IN SEPARATE LEGAL DESCRIPTION AS NOTED HEREON, WAS ACTUALLY MADE UPON THE GROUND UNDER MY DIRECTION AND SUPERVISION, AND THAT TO THE BEST OF MY PROFESSIONAL KNOWLEDGE AND BELIEF, THE INFORMATION SHOWN HEREON IS CORRECT AS DETERMINED BY SAID SURVEY.

THIS SURVEY SUBSTANTIALLY COMPLIES WITH THE CURRENT TEXAS SOCIETY OF PROFESSIONAL SURVEYORS STANDARDS AND SPECIFICATIONS FOR A CATEGORY 1B, CONDITION II SURVEY.

MUNIR ODHWANI
REGISTERED PROFESSIONAL LAND SURVEYOR
TEXAS REGISTRATION NO. 5996

DATE: FEBRUARY 12, 2010



LEGEND

- = LEASE CORNER MARKER
"AS NOTED"
- OH = OVERHEAD LINES
- = POWER POLE
- (= GUY ANCHOR

ACREAGE TABLE

LEASE BLOCK PART 1:	3.7048 ACRES
F.E.R.C. BUFFER AREA PART 1:	0.8755 OF ONE ACRE
LEASE BLOCK PART 2:	2.7357 ACRES
F.E.R.C. BUFFER AREA PART 2:	0.7163 OF ONE ACRE
SURVEY BLOCK:	8.0323 ACRES TOTAL

STANDARD LAND SURVEY
OF

8.0323 ACRES

SITUATED IN TRACT 8-1-93

AREA 2, LOTS 116-124

POSSUM KINGDOM LAKE

G.B. & C.N.G. R.R. CO. SURVEY NO. 1

ABSTRACT 1034

PALO PINTO COUNTY, TEXAS

AECOM

AECOM USA GROUP, INC.
1200 SUMMIT AVENUE, SUITE 600
FORT WORTH, TEXAS 76102
WWW.AECOM.COM
817.698.6770

LINE TABLE		
LINE	BEARING	DISTANCE
L1	S44°50'29"E	61.41'
L2	S46°29'05"E	18.94'
L3	S51°04'49"E	23.71'
L4	S41°40'14"E	10.73'
L5	S00°09'46"W	8.60'
L6	S21°33'49"W	17.95'
L7	S08°34'09"W	28.46'
L8	S08°10'30"W	22.68'
L9	S10°26'44"W	19.89'
L10	S21°21'51"W	17.91'
L11	S25°12'34"W	22.16'
L12	S31°42'51"W	19.17'
L13	S42°43'51"W	24.16'
L14	S24°58'16"W	28.64'
L15	S20°31'53"W	24.88'
L16	S12°55'09"W	25.01'
L17	S14°49'28"W	18.25'
L18	S21°24'52"W	23.43'
L19	S20°50'56"W	26.87'
L20	S03°16'24"E	13.38'
L21	S36°16'05"W	7.17'
L22	S57°36'37"W	2.85'
L23	N84°14'55"W	19.22'
L24	S10°58'22"W	38.97'
L25	S32°56'40"W	23.83'
L26	S40°46'39"W	34.04'
L27	S18°32'07"E	20.35'
L28	S19°02'45"W	19.08'
L29	S13°13'58"E	20.45'
L30	S19°45'29"W	1.42'
L31	N86°38'51"W	10.51'
L32	S22°51'39"W	42.27'
L33	S13°36'56"W	24.55'
L34	S26°32'38"W	26.19'
L35	S27°16'41"W	10.84'
L36	S60°34'38"W	13.04'
L37	S19°55'53"W	25.42'

LINE TABLE		
LINE	BEARING	DISTANCE
L38	S05°09'30"E	8.17'
L39	S21°12'47"W	19.75'
L40	S18°48'16"W	43.68'
L41	S12°30'09"E	10.90'
L42	S20°38'00"W	11.05'
L43	S32°26'57"W	20.33'
L44	S30°06'35"W	39.08'
L45	S24°55'27"E	0.99'
L46	S41°58'13"W	7.16'
L47	S34°39'53"W	26.78'
L48	S24°07'14"W	19.14'
L49	S49°32'36"W	34.58'
L50	S14°47'33"E	3.30'
L51	S62°56'49"W	12.75'
L52	S64°29'08"W	21.31'
L53	S87°55'53"W	14.39'
L54	S86°13'03"W	24.11'
L55	S77°37'09"W	38.34'
L56	S33°32'51"W	27.36'
L57	S50°30'18"W	11.33'
L58	S55°21'51"W	15.20'
L59	S77°27'16"W	13.33'
L60	N87°04'25"W	21.57'
L61	S40°50'26"W	17.16'
L62	S74°13'19"W	18.62'
L63	S46°14'59"W	1.96'
L64	N87°58'19"W	37.60'
L65	S20°25'29"W	16.95'
L66	N83°09'56"W	37.76'
L67	S89°05'51"W	45.99'
L68	S39°32'19"W	18.18'
L69	S81°27'55"W	22.61'
L70	S86°31'49"W	19.64'
L71	S69°22'27"E	60.21'
L72	S44°50'29"E	6.27'
L73	S46°29'05"E	17.58'
L74	S51°04'49"E	24.76'

LINE TABLE		
LINE	BEARING	DISTANCE
L75	S41°40'14"E	22.34'
L76	S00°09'46"W	22.88'
L77	S21°33'49"W	19.83'
L78	S08°34'09"W	25.53'
L79	S08°10'30"W	23.09'
L80	S10°26'44"W	22.78'
L81	S21°21'51"W	21.14'
L82	S25°12'34"W	24.42'
L83	S31°42'51"W	23.01'
L84	S42°43'51"W	22.66'
L85	S24°58'16"W	23.76'
L86	S20°31'53"W	22.25'
L87	S12°55'09"W	23.76'
L88	S14°49'28"W	20.10'
L89	S21°24'52"W	24.75'
L90	S20°50'56"W	21.40'
L91	S03°16'24"E	17.02'
L92	S36°16'05"W	20.87'
L93	S57°36'37"W	16.21'
L94	N84°14'55"W	5.04'
L95	S10°58'22"W	21.00'
L96	S32°56'40"W	30.40'
L97	S40°46'39"W	21.51'
L98	S18°32'07"E	14.62'
L99	S19°02'45"W	20.35'
L100	S13°13'58"E	20.62'
L101	S19°45'29"W	27.53'
L102	N86°38'51"W	11.54'
L103	S22°51'39"W	22.58'
L104	S13°36'56"W	25.36'
L105	S26°32'38"W	29.19'
L106	S27°16'41"W	18.47'
L107	S60°34'38"W	11.26'
L108	S19°55'53"W	10.60'
L109	S05°09'30"E	8.46'
L110	S21°12'47"W	25.08'
L111	S18°48'16"W	36.15'

LINE TABLE		
LINE	BEARING	DISTANCE
L112	S12°30'09"E	11.34'
L113	S20°38'00"W	21.08'
L114	S32°26'57"W	22.41'
L115	S30°06'35"W	25.55'
L116	S24°55'27"E	4.48'
L117	S41°58'13"W	22.07'
L118	S34°39'53"W	22.88'
L119	S24°07'14"W	22.47'
L120	S49°32'36"W	24.49'
L121	S14°47'33"E	10.00'
L122	S73°00'44"W	12.68'
L123	S62°56'49"W	20.26'
L124	S64°29'08"W	26.83'
L125	S87°55'53"W	19.20'
L126	S86°13'03"W	21.86'
L127	S77°37'09"W	26.34'
L128	S33°32'51"W	20.97'
L129	S50°30'18"W	16.11'
L130	S55°21'51"W	21.14'
L131	S77°27'16"W	21.61'
L132	N87°04'25"W	12.75'
L133	S40°50'26"W	12.44'
L134	S74°13'19"W	19.89'
L135	S46°14'59"W	6.29'
L136	N87°58'19"W	30.12'
L137	S20°25'29"W	18.60'
L138	N83°09'56"W	55.75'
L139	S89°05'51"W	32.76'
L140	S39°32'19"W	16.22'
L141	S81°27'55"W	33.29'
L142	S86°31'49"W	30.44'
L143	S52°19'16"W	37.62'
L144	S75°00'56"W	36.05'
L145	S50°06'28"W	25.49'
L146	N76°38'08"W	3.11'
L147	N52°22'33"E	120.38'
L148	S28°42'58"W	15.63'

LINE TABLE		
LINE	BEARING	DISTANCE
L149	S38°32'17"W	40.84'
L150	S31°00'52"W	53.78'
L151	S22°46'48"E	9.87'
L152	S14°14'07"W	25.80'
L153	S26°16'15"W	29.66'
L154	S16°48'04"W	38.26'
L155	S50°46'41"E	8.12'
L156	S09°07'49"W	17.60'
L157	S18°39'30"W	39.89'
L158	S01°05'32"E	22.82'
L159	S01°03'50"W	54.37'
L160	S04°57'00"W	9.70'
L161	S15°28'43"W	28.73'
L162	S01°01'59"E	22.99'
L163	S53°26'03"W	23.17'
L164	S35°07'31"W	13.31'
L165	S85°23'49"W	27.50'
L166	S88°56'27"W	31.72'
L167	S67°42'58"W	22.84'
L168	S38°15'54"W	15.62'
L169	S37°31'56"W	18.46'
L170	S65°40'17"W	27.12'
L171	S31°46'03"W	15.89'
L172	S48°29'03"W	42.02'
L173	S07°32'49"W	27.65'
L174	S36°42'12"W	17.28'
L175	S75°32'24"W	20.42'
L176	S26°52'57"W	36.78'
L177	S71°18'43"W	31.20'
L178	S11°06'56"W	19.95'
L179	S46°37'21"W	20.46'
L180	S38°38'17"W	20.59'
L181	S88°33'27"W	29.48'
L182	N89°38'31"W	18.10'
L183	S61°14'38"W	17.91'
L184	S71°42'53"W	14.90'
L185	S73°19'26"W	22.44'

LINE TABLE		
LINE	BEARING	DISTANCE
L186	N73°17'57"W	17.00'
L187	S64°22'04"W	27.65'
L188	S58°48'33"W	47.67'
L189	S26°33'25"W	47.97'
L190	S12°02'10"W	19.81'
L191	N52°22'33"E	88.35'
L192	S39°00'13"W	13.53'
L193	S34°16'24"W	28.06'
L194	S39°13'17"W	29.19'
L195	S28°42'58"W	28.76'
L196	S38°32'17"W	41.34'
L197	S31°00'52"W	39.46'
L198	S09°35'57"W	41.38'
L199	S26°16'15"W	30.23'
L200	S16°48'04"W	19.46'
L201	S50°46'41"E	5.79'
L202	S09°07'49"W	34.09'
L203	S18°39'30"W	37.62'
L204	S01°05'32"E	18.94'
L205	S01°03'50"W	32.10'
L206	S83°31'10"E	10.69'
L207	S18°48'10"W	40.25'
L208	S15°28'43"W	24.38'
L209	S63°33'32"E	22.13'
L210	S48°08'27"W	13.40'
L211	S01°34'04"E	7.05'
L212	S55°58'41"W	11.40'
L213	S37°49'28"E	5.97'
L214	S48°06'31"W	16.44'
L215	S78°50'54"W	17.46'
L216	S35°07'31"W	21.02'
L217	S85°23'49"W	40.00'
L218	S88°56'27"W	27.81'
L219	S04°48'09"W	7.33'
L220	N79°55'57"W	12.20'
L221	S34°18'57"W	6.86'
L222	N79°44'38"W	16.60'

LINE TABLE		
LINE	BEARING	DISTANCE
L223	S38°15'54"W	28.31'
L224	S83°03'25"W	12.77'
L225	N65°52'28"W	12.13'
L226	S37°31'56"W	24.73'
L227	S65°40'17"W	25.76'
L228	S31°46'03"W	11.95'
L229	S48°29'03"W	36.36'
L230	S07°32'49"W	24.82'
L231	S36°42'12"W	32.60'
L232	S75°32'24"W	17.93'
L233	S26°52'57"W	35.69'
L234	S71°18'43"W	26.92'
L235	S11°06'56"W	13.47'
L236	S46°37'21"W	26.72'
L237	S38°38'17"W	30.48'
L238	S88°33'27"W	41.51'
L239	N89°38'31"W	12.00'
L240	S61°14'38"W	13.71'
L241	S71°42'53"W	17.55'
L242	S73°19'26"W	30.29'
L243	N73°17'57"W	14.82'
L244	S64°22'04"W	16.75'
L245	S58°48'33"W	39.23'
L246	S26°33'25"W	37.56'
L247	S12°02'10"W	25.05'
L248	S21°17'18"W	4.70'
L249	N49°38'46"W	27.54'

CURVE TABLE					
CURVE	LENGTH	DELTA	RADIUS	CHORD BEARING	CHORD
C1	29.20	66°53'42"	25.01	S71°43'08"W	27.57'
C2	35.37	80°33'03"	25.16	S77°56'17"W	32.52'

STANDARD LAND SURVEY
OF
8.0323 ACRES
SITUATED IN TRACT 8-1-93
AREA 2, LOTS 116-124
POSSUM KINGDOM LAKE
G.B. & C.N.G. R.R. CO. SURVEY NO. 1
ABSTRACT 1034
PALO PINTO COUNTY, TEXAS

AECOM

AECOM USA GROUP, INC.
1200 SUMMIT AVENUE, SUITE 600
FORT WORTH, TEXAS 76102
WWW.AECOM.COM
817.698.6770

POSSUM KINGDOM CONTROL MONUMENT NO. 1
N83°53'54"W, 8,370.19'

POINT OF BEGINNING PART 1
N 6,997,029.19
E 1,969,660.25

F.E.R.C. POINT OF BEGINNING PART 1

S69°22'27"E
125.35'

N04°07'33"E
190.00'

4' CHAIN LINK FENCE

LOT 116

G.B. & C.N.G. R.R. CO SURVEY NO. 1
ABSTRACT 1034

THE BRAZOS RIVER CONSERVATION AND RECLAMATION DISTRICT
TRACT 8-1-93
CAUSE NO. 2539
DATED JULY 11, 1940
VOLUME 5, PAGE 414
J.R.P.P.C.T.

N24°07'33"E
250.00'

LEASE BLOCK R032
AREA: 2

LOT 117

PART 1
3.7048 ACRES
161,383 SQ. FT.

F.E.R.C. BUFFER AREA
PART 1
0.8755 OF ONE ACRE
38,136 SQ. FT.

CUSTARD/PITTS LAND AND CATTLE COMPANY, L.P.
VOLUME 909, PAGE 719
D.R.P.P.C.T.

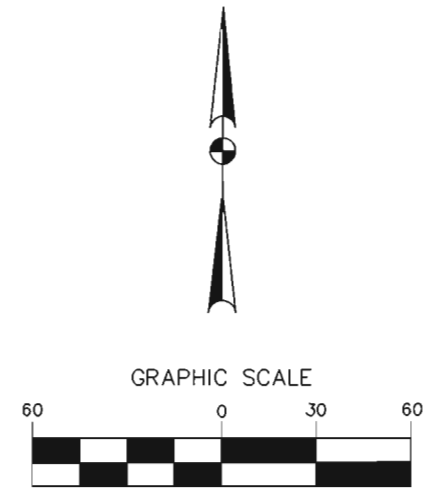
INTERIOR BLOCK IMPROVEMENTS NOT SHOWN

LOT 118

LEASE BLOCK R032
AREA: 2

N13°22'27"W
260.00'

POSSUM KINGDOM LAKE
THE BRAZOS RIVER CONSERVATION AND RECLAMATION DISTRICT
TRACT 8-1-93
CAUSE NO. 2539
DATED JULY 11, 1940
VOLUME 5, PAGE 414
J.R.P.P.C.T.



(IN FEET)
1 inch = 60 ft.

STANDARD LAND SURVEY OF
8.0323 ACRES
SITUATED IN TRACT 8-1-93
AREA 2, LOTS 116-124
POSSUM KINGDOM LAKE
G.B. & C.N.G. R.R. CO. SURVEY NO. 1
ABSTRACT 1034
PALO PINTO COUNTY, TEXAS

AECOM

AECOM USA GROUP, INC.
1200 SUMMIT AVENUE, SUITE 600
FORT WORTH, TEXAS 76102
WWW.AECOM.COM
817.698.6770

SHEET 3 OF 6

Date: 12/17/09

Project No. 60052528.103

60052528
R32By.dwg

LOT 118

LEASE BLOCK R032
AREA: 2

PART 1
3.7048 ACRES
161,383 SQ. FT.

INTERIOR BLOCK
IMPROVEMENTS
NOT SHOWN

FOUND BRAZOS RIVER
AUTHORITY CONCRETE
MONUMENT WITH BRASS
DISK STAMPED 8EE

CUSTARD/PITTS LAND
AND CATTLE COMPANY, L.P.
VOLUME 909, PAGE 719
D.R.P.P.C.T.

LEASE BLOCK R032
AREA: 2

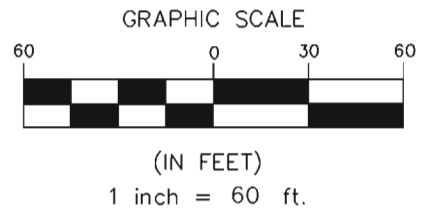
G.B. & C.N.G. R.R. CO. SURVEY
NO. 1
ABSTRACT 1034

LOT 119

PART 1
3.7048 ACRES
161,383 SQ. FT.

F.E.R.C. BUFFER AREA
PART 1
0.8755 OF ONE ACRE
38,136 SQ. FT.

POSSUM KINGDOM LAKE
THE BRAZOS RIVER CONSERVATION
AND RECLAMATION DISTRICT
TRACT 8-1-93
CAUSE NO. 2539
DATED JULY 11, 1940
VOLUME 5, PAGE 414
J.R.P.P.C.T.

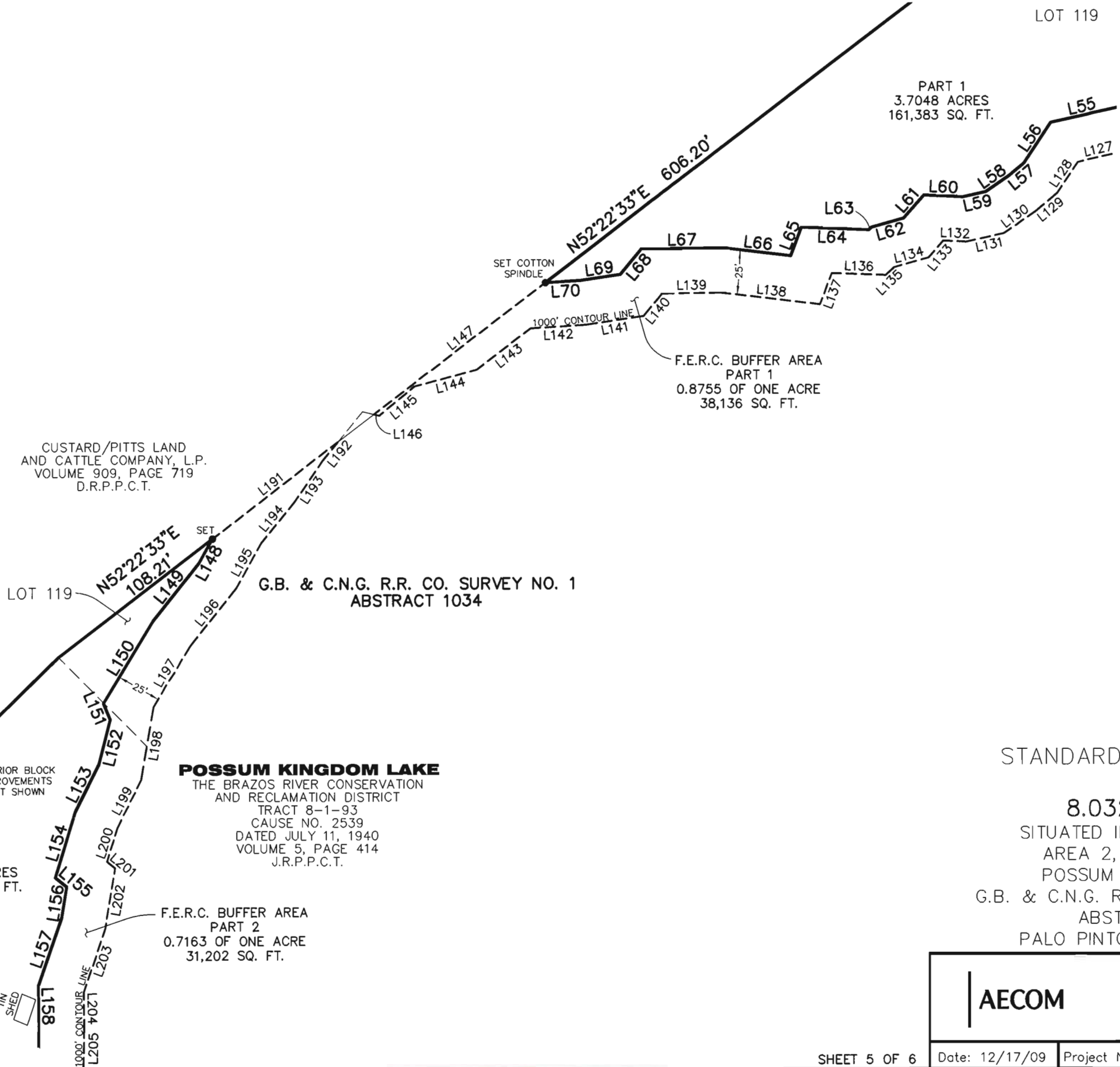
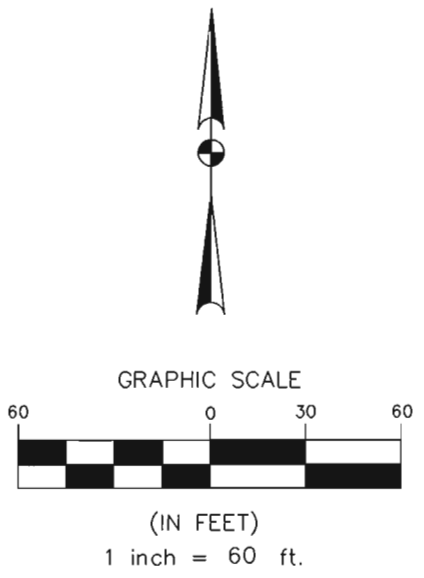


STANDARD LAND SURVEY
OF
8.0323 ACRES
SITUATED IN TRACT 8-1-93
AREA 2, LOTS 116-124
POSSUM KINGDOM LAKE
G.B. & C.N.G. R.R. CO. SURVEY NO. 1
ABSTRACT 1034
PALO PINTO COUNTY, TEXAS

AECOM	AECOM USA GROUP, INC. 1200 SUMMIT AVENUE, SUITE 600 FORT WORTH, TEXAS 76102 WWW.AECOM.COM 817.698.6770		
	SHEET 4 OF 6	Date: 12/17/09	Project No. 60052528.103

NO PART OR PARTS OF THIS DRAWING MAY BE REPRODUCED OR RE TRANSMITTED IN ANY WAY OR FORM (ELECTRONIC, MECHANICAL, PHOTOCOPYING, OR OTHERWISE) WITHOUT THE EXPRESS WRITTEN PERMISSION OF AECOM.

J:\60052528 Possum Kingdom Lake\102.01 Assimilation of Data\Group 8\R032\60052528 R032By.dwg 12/17/2009 9:06:03 PM CST



CUSTARD/PITTS LAND
AND CATTLE COMPANY, L.P.
VOLUME 909, PAGE 719
D.R.P.P.C.T.

G.B. & C.N.G. R.R. CO. SURVEY NO. 1
ABSTRACT 1034

POSSUM KINGDOM LAKE
THE BRAZOS RIVER CONSERVATION
AND RECLAMATION DISTRICT
TRACT 8-1-93
CAUSE NO. 2539
DATED JULY 11, 1940
VOLUME 5, PAGE 414
J.R.P.P.C.T.

PART 1
3.7048 ACRES
161,383 SQ. FT.

F.E.R.C. BUFFER AREA
PART 1
0.8755 OF ONE ACRE
38,136 SQ. FT.

PART 2
2.7357 ACRES
119,168 SQ. FT.

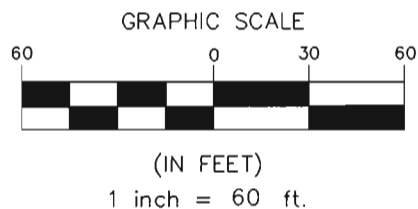
F.E.R.C. BUFFER AREA
PART 2
0.7163 OF ONE ACRE
31,202 SQ. FT.

STANDARD LAND SURVEY
OF
8.0323 ACRES
SITUATED IN TRACT 8-1-93
AREA 2, LOTS 116-124
POSSUM KINGDOM LAKE
G.B. & C.N.G. R.R. CO. SURVEY NO. 1
ABSTRACT 1034
PALO PINTO COUNTY, TEXAS

AECOM	AECOM USA GROUP, INC. 1200 SUMMIT AVENUE, SUITE 600 FORT WORTH, TEXAS 76102 WWW.AECOM.COM 817.698.6770		
	Date: 12/17/09	Project No. 60052528.103	60052528 R32By.dwg

NO PART OR PARTS OF THIS DRAWING MAY BE REPRODUCED OR TRANSMITTED IN ANY WAY OR FORM (ELECTRONIC, MECHANICAL, PHOTOCOPYING, OR OTHERWISE) WITHOUT THE EXPRESS WRITTEN PERMISSION OF AECOM.

J:\60052528 Possum Kingdom Lake\102.01 Assimilation of Data\Group 8\RO32\60052528 R032By.dwg 12/17/2009 9:06:03 PM CST



CUSTARD/PITTS LAND
AND CATTLE COMPANY, L.P.
VOLUME 909, PAGE 719
D.R.P.P.C.T.

G.B. & C.N.G. R.R. CO. SURVEY NO. 1
ABSTRACT 1034

POSSUM KINGDOM LAKE
THE BRAZOS RIVER CONSERVATION
AND RECLAMATION DISTRICT
TRACT 8-1-93
CAUSE NO. 2539
DATED JULY 11, 1940
VOLUME 5, PAGE 414
J.R.P.P.C.T.

STANDARD LAND SURVEY
OF
8.0323 ACRES
SITUATED IN TRACT 8-1-93
AREA 2, LOTS 116-124
POSSUM KINGDOM LAKE
G.B. & C.N.G. R.R. CO. SURVEY NO. 1
ABSTRACT 1034
PALO PINTO COUNTY, TEXAS

AECOM

AECOM USA GROUP, INC.
1200 SUMMIT AVENUE, SUITE 600
FORT WORTH, TEXAS 76102
WWW.AECOM.COM
817.698.6770

SHEET 6 OF 6

Date: 12/17/09

Project No. 60052528.103

60052528
R32By.dwg