

VICINITY MAP
NOT TO SCALE

NOTES:

- 1) BEARINGS AND COORDINATES SHOWN HEREON ARE BASED ON THE NORTH AMERICAN DATUM OF 1983, TEXAS COORDINATE SYSTEM, NORTH CENTRAL ZONE (4202).
- 2) 1,000-FOOT CONTOUR ELEVATION OF POSSUM KINGDOM LAKE IS DETERMINED BASED ON MEASUREMENTS FROM THE TOP OF THE EXISTING SPILLWAY CREST GATES AT THE MORRIS SHEPPARD DAM BEING AT ELEVATION 1,000-FEET ABOVE MEAN SEA LEVEL AS NOTED IN FEDERAL POWER COMMISSION REPORT PROJECT NO. 1490 - TEXAS ON JUNE 2, 1938.
- 3) SET = 5/8" IRON ROD W/CAP STAMPED "AECOM" SET; D.R.P.P.C.T.= DEED RECORDS, PALO PINTO COUNTY, TEXAS; P.R.P.P.C.T.= PLAT RECORDS, PALO PINTO COUNTY, TEXAS; F.E.R.C.= FEDERAL ENERGY REGULATORY COMMISSION; J.R.P.P.C.T.= JUDGEMENT RECORDS, PALO PINTO COUNTY, TEXAS.
- 4) METES AND BOUNDS DESCRIPTIONS TO ACCOMPANY THIS SURVEY.

SURVEYORS CERTIFICATE

TO: BRAZOS RIVER AUTHORITY, PATTERSON PK LAND PARTNERSHIP, LTD., AND HERITAGE TITLE COMPANY OF AUSTIN, INC.

I, MUNIR ODHWANI, A REGISTERED PROFESSIONAL LAND SURVEYOR IN THE STATE OF TEXAS, REGISTRATION NUMBER 5996, HEREBY STATE THAT A SURVEY OF THE REAL PROPERTY DESCRIBED IN SEPARATE LEGAL DESCRIPTION AS NOTED HEREON, WAS ACTUALLY MADE UPON THE GROUND UNDER MY DIRECTION AND SUPERVISION, AND THAT TO THE BEST OF MY PROFESSIONAL KNOWLEDGE AND BELIEF, THE INFORMATION SHOWN HEREON IS CORRECT AS DETERMINED BY SAID SURVEY.

THIS SURVEY SUBSTANTIALLY COMPLIES WITH THE CURRENT TEXAS SOCIETY OF PROFESSIONAL SURVEYORS STANDARDS AND SPECIFICATIONS FOR A CATEGORY 1B, CONDITION II SURVEY.

MUNIR ODHWANI
REGISTERED PROFESSIONAL LAND SURVEYOR
TEXAS REGISTRATION NO. 5996

DATE: FEBRUARY 12, 2010



- LEGEND
- = LEASE CORNER MARKER
"AS NOTED"
 - OH = OVERHEAD LINES
 - = POWER POLE

ACREAGE TABLE	
LEASE BLOCK:	7.3072 ACRES
F.E.R.C. BUFFER AREA:	1.7119 ACRES
SURVEY BLOCK:	9.0191 ACRES TOTAL

STANDARD LAND SURVEY
OF
9.0191 ACRES
SITUATED IN TRACT 8-1-93
AREA 2, LOTS 137-140
POSSUM KINGDOM LAKE
G.B. & C.N.G. R.R. CO. SURVEY NO. 1
ABSTRACT 1034
PALO PINTO COUNTY, TEXAS

AECOM	AECOM USA GROUP, INC. 1200 SUMMIT AVENUE, SUITE 600 FORT WORTH, TEXAS 76102 WWW.AECOM.COM 817.698.6770
--------------	--

LINE TABLE		
LINE	BEARING	DISTANCE
L1	N20°16'44"E	26.16'
L2	N05°02'46"W	26.16'
L3	N45°44'38"E	30.02'
L4	N05°29'14"W	40.43'
L5	N01°35'48"E	29.88'
L6	N64°35'41"E	2.91'
L7	N54°01'36"E	51.50'
L8	N41°15'26"E	23.68'
L9	N51°43'33"E	22.27'
L10	N33°31'13"E	29.72'
L11	N40°29'44"E	29.39'
L12	N38°15'39"E	26.18'
L13	N40°54'04"E	33.67'
L14	N39°52'00"E	25.99'
L15	N36°06'14"E	31.29'
L16	N13°45'35"E	40.02'
L17	N00°24'57"E	40.07'
L18	N24°12'01"W	20.65'
L19	N08°52'55"E	2.43'
L20	N10°51'32"W	34.25'
L21	N09°43'24"W	30.61'
L22	N76°54'21"E	11.34'
L23	N18°14'32"E	48.72'
L24	N13°34'45"E	28.16'
L25	N20°43'19"E	32.34'
L26	N03°27'09"E	51.70'
L27	N15°24'01"W	37.69'
L28	N09°06'45"W	24.94'
L29	N11°24'32"E	34.83'
L30	N69°44'45"W	10.48'
L31	N12°56'44"E	21.77'
L32	N62°37'50"W	24.48'
L33	N28°12'31"W	7.60'
L34	N22°30'12"E	5.88'
L35	N18°10'52"E	48.90'
L36	N47°23'45"W	20.25'
L37	N11°55'01"W	8.59'
L38	N10°41'57"E	28.88'
L39	N06°21'34"E	28.19'
L40	N33°09'35"E	20.85'
L41	N21°02'08"E	39.84'
L42	N24°03'07"W	11.74'
L43	N33°15'53"E	62.27'
L44	N22°36'57"W	30.05'
L45	N26°47'56"E	7.49'
L46	N84°11'57"E	33.21'
L47	N80°45'17"E	37.72'
L48	N60°25'40"E	26.96'
L49	S73°43'17"E	20.38'
L50	N83°50'40"E	26.74'
L51	N78°15'37"E	13.31'
L52	S62°19'21"E	32.80'
L53	N59°48'13"E	21.76'

LINE TABLE		
LINE	BEARING	DISTANCE
L54	S81°28'06"E	17.38'
L55	N75°57'12"E	3.98'
L56	S06°03'39"W	10.94'
L57	S20°36'52"W	44.69'
L58	S31°25'49"E	38.70'
L59	S29°04'19"W	18.75'
L60	S29°48'45"E	30.05'
L61	S06°55'11"E	16.71'
L62	S24°08'44"W	10.11'
L63	S33°19'04"W	29.74'
L64	S27°29'07"E	25.20'
L65	S47°43'35"W	12.93'
L66	S38°33'23"W	43.45'
L67	S06°18'19"E	13.60'
L68	S34°48'20"W	21.76'
L69	S19°16'20"E	30.77'
L70	S32°20'36"E	18.88'
L71	S01°53'46"W	33.31'
L72	S31°20'22"E	15.15'
L73	S12°39'17"W	17.42'
L74	S13°18'45"W	18.73'
L75	S22°42'58"W	35.37'
L76	S07°19'51"E	17.55'
L77	S24°23'30"W	31.97'
L78	S19°52'21"W	52.65'
L79	S37°12'35"E	14.13'
L80	S21°10'28"W	31.47'
L81	S20°37'57"W	48.99'
L82	S20°46'49"E	30.02'
L83	S21°24'10"W	9.39'
L84	S08°51'17"E	28.00'
L85	S03°10'33"E	27.43'
L86	S56°01'23"E	26.20'
L87	S04°07'52"W	17.44'
L88	S68°44'21"E	35.81'
L89	S56°17'48"E	6.67'
L90	S03°26'31"W	22.50'
L91	S42°16'25"E	14.17'
L92	S14°19'24"W	21.62'
L93	S04°23'00"W	34.18'
L94	S01°35'39"W	15.85'
L95	S23°43'36"W	45.95'
L96	S66°42'08"E	23.18'
L97	S11°12'38"W	4.08'
L98	S34°24'11"W	29.84'
L99	S38°31'01"E	23.92'
L100	S06°53'52"E	5.04'
L101	S13°16'33"W	35.25'
L102	S26°18'14"E	17.42'
L103	S32°41'58"W	10.08'
L104	S06°12'17"E	33.50'
L105	S04°56'52"W	32.43'
L106	S34°41'21"E	42.96'

LINE TABLE		
LINE	BEARING	DISTANCE
L107	S78°02'08"E	47.07'
L108	N66°41'15"E	4.42'
L109	S29°14'29"W	10.26'
L110	S43°04'10"E	41.19'
L111	S27°00'58"E	30.55'
L112	S08°22'57"E	6.85'
L113	S52°17'38"W	10.47'
L114	S47°27'16"W	17.08'
L115	N59°16'57"W	25.42'
L116	N20°16'44"E	15.94'
L117	N05°02'46"W	32.41'
L118	N45°44'38"E	29.90'
L119	N05°29'14"W	29.99'
L120	N01°35'48"E	30.72'
L121	N44°57'36"W	15.15'
L122	N64°35'41"E	28.26'
L123	N54°01'36"E	46.39'
L124	N41°15'26"E	23.17'
L125	N51°43'33"E	20.55'
L126	N33°31'13"E	27.24'
L127	N40°29'44"E	30.42'
L128	N38°15'39"E	26.27'
L129	N40°54'04"E	34.02'
L130	N39°52'00"E	24.94'
L131	N36°06'14"E	25.53'
L132	N13°45'35"E	32.16'
L133	N00°24'57"E	31.69'
L134	N24°12'01"W	10.72'
L135	S78°48'54"W	6.92'
L136	N08°52'55"E	17.85'
L137	N10°51'32"W	30.14'
L138	N09°43'24"W	27.33'
L139	N48°17'19"W	14.31'
L140	N10°43'23"E	16.79'
L141	N76°54'21"E	23.93'
L142	N18°14'32"E	33.66'
L143	N13°34'45"E	28.71'
L144	N20°43'19"E	30.10'
L145	N03°27'09"E	43.76'
L146	N15°24'01"W	34.91'
L147	N09°06'45"W	30.84'
L148	N11°24'32"E	17.95'
L149	N69°44'45"W	11.07'
L150	N12°56'44"E	24.39'
L151	N62°37'50"W	12.84'
L152	N28°12'31"W	27.19'
L153	N22°30'12"E	16.78'
L154	N18°10'52"E	31.85'
L155	N47°23'45"W	12.14'
L156	N11°55'01"W	21.59'
L157	N10°41'57"E	32.93'
L158	N06°21'34"E	33.20'
L159	N33°09'35"E	24.15'

LINE TABLE		
LINE	BEARING	DISTANCE
L160	N21°02'08"E	26.81'
L161	N24°03'07"W	15.02'
L162	N33°15'53"E	62.67'
L163	N22°36'57"W	28.30'
L164	N26°47'56"E	30.57'
L165	N74°13'13"E	10.27'
L166	N84°11'57"E	37.17'
L167	N80°45'17"E	32.49'
L168	N60°25'40"E	33.05'
L169	S73°43'17"E	26.00'
L170	N83°50'40"E	20.56'
L171	N78°15'37"E	21.05'
L172	S62°19'21"E	27.94'
L173	N59°48'13"E	16.73'
L174	S81°28'06"E	21.17'
L175	N75°57'12"E	8.05'
L176	N87°01'59"E	17.77'
L177	S34°22'26"E	11.62'
L178	S06°03'39"W	34.66'
L179	S20°36'52"W	35.67'
L180	S31°25'49"E	41.08'
L181	S29°04'19"W	19.22'
L182	S29°48'45"E	21.00'
L183	S06°55'11"E	28.72'
L184	S24°08'44"W	19.07'
L185	S33°19'04"W	17.08'
L186	S27°29'07"E	29.79'
L187	S47°43'35"W	30.18'
L188	S38°33'23"W	31.13'
L189	S06°18'19"E	12.66'
L190	S34°48'20"W	18.38'
L191	S19°16'20"E	15.15'
L192	S32°20'36"E	23.72'
L193	S01°53'46"W	33.55'
L194	S31°20'22"E	17.78'
L195	S12°39'17"W	27.66'
L196	S13°18'45"W	20.93'
L197	S22°42'58"W	30.71'
L198	S07°19'51"E	17.95'
L199	S24°23'30"W	38.09'
L200	S19°52'21"W	38.07'
L201	S37°12'35"E	14.50'
L202	S21°10'28"W	45.32'
L203	S20°37'57"W	39.42'
L204	S20°46'49"E	30.22'
L205	S21°24'10"W	12.28'
L206	S08°51'17"E	22.48'
L207	S03°10'33"E	16.24'
L208	S56°01'23"E	28.25'
L209	S04°07'52"W	13.46'
L210	S68°44'21"E	20.08'
L211	S56°17'48"E	23.75'
L212	S03°26'31"W	26.32'

LINE TABLE		
LINE	BEARING	DISTANCE
L213	S42°16'25"E	17.10'
L214	S14°19'24"W	32.90'
L215	S04°23'00"W	31.40'
L216	S01°35'39"W	20.13'
L217	S23°43'36"W	25.65'
L218	S66°42'08"E	18.20'
L219	S11°12'38"W	29.42'
L220	S34°24'11"W	16.50'
L221	S38°31'01"E	12.53'
L222	S06°53'52"E	16.57'
L223	S13°16'33"W	30.70'
L224	S26°18'14"E	22.57'
L225	S32°41'58"W	15.40'
L226	S06°12'17"E	27.11'
L227	S04°56'52"W	25.86'
L228	S34°41'21"E	24.02'
L229	S78°02'08"E	29.18'
L230	N66°41'15"E	13.87'
L231	S76°38'06"E	14.49'
L232	S73°18'50"E	20.83'
L233	S29°14'29"W	29.50'
L234	S43°04'10"E	26.45'
L235	S27°00'58"E	38.06'
L236	S08°53'37"E	16.56'
L237	S17°24'48"W	13.83'
L238	S52°17'38"W	2.28'
L239	S87°46'00"W	40.60'

STANDARD LAND SURVEY
OF
9.0191 ACRES
SITUATED IN TRACT 8-1-93
AREA 2, LOTS 137-140
POSSUM KINGDOM LAKE
G.B. & C.N.G. R.R. CO. SURVEY NO. 1
ABSTRACT 1034
PALO PINTO COUNTY, TEXAS

AECOM

AECOM USA GROUP, INC.
1200 SUMMIT AVENUE, SUITE 600
FORT WORTH, TEXAS 76102
WWW.AECOM.COM
817.698.6770

POSSUM KINGDOM LAKE
 THE BRAZOS RIVER CONSERVATION
 AND RECLAMATION DISTRICT
 TRACT 8-1-93
 CAUSE NO. 2539
 DATED JULY 11, 1940
 VOLUME 5, PAGE 414
 J.R.P.P.C.T.

LEASE BLOCK R029
 AREA: 2

LOT 138

7.3072 ACRES
 318,301 SQ. FT.

G.B. & C.N.G. R.R. CO. SURVEY NO. 1
 ABSTRACT 1034

POSSUM KINGDOM LAKE
 THE BRAZOS RIVER CONSERVATION
 AND RECLAMATION DISTRICT
 TRACT 8-1-93
 CAUSE NO. 2539
 DATED JULY 11, 1940
 VOLUME 5, PAGE 414
 J.R.P.P.C.T.

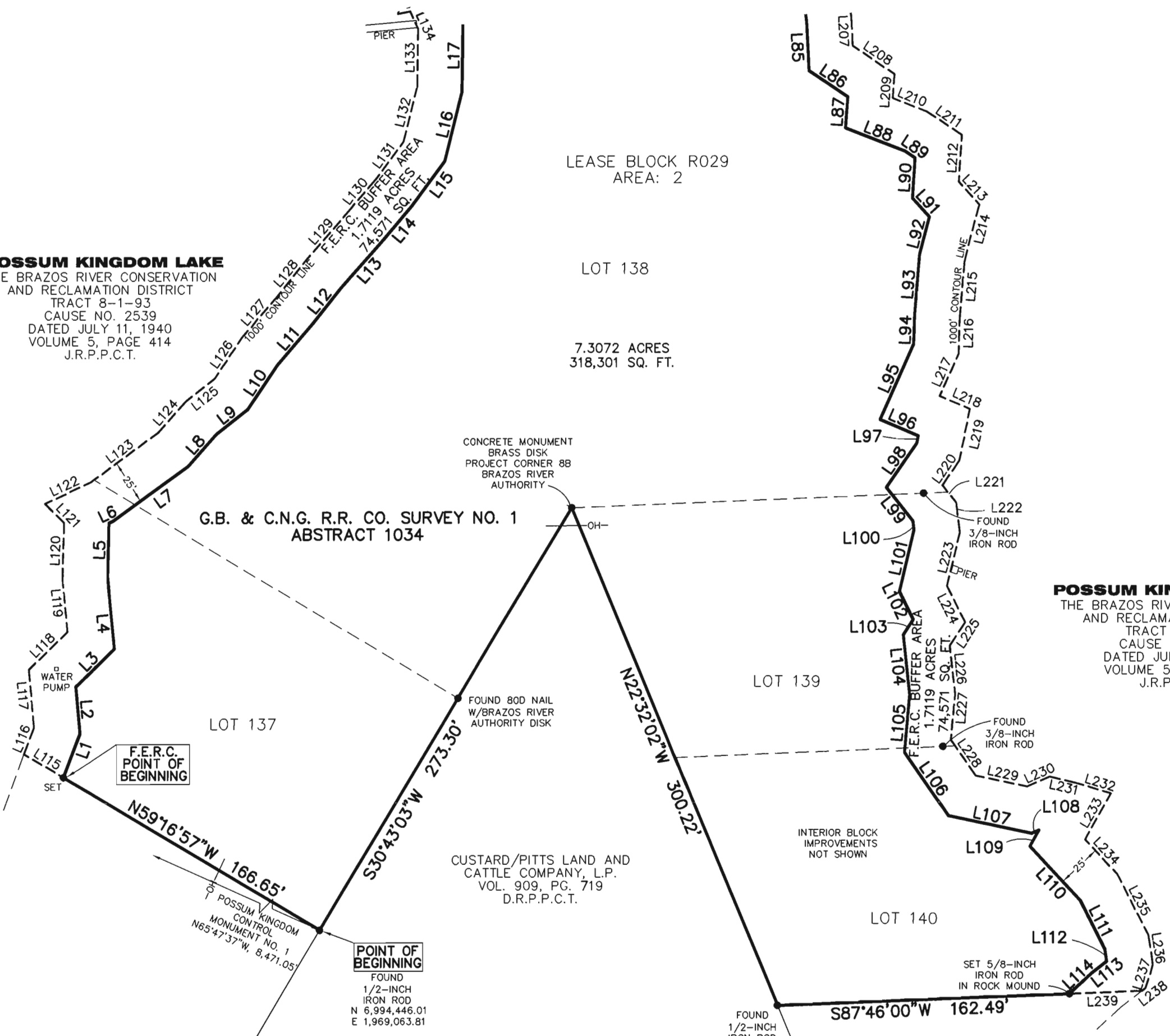
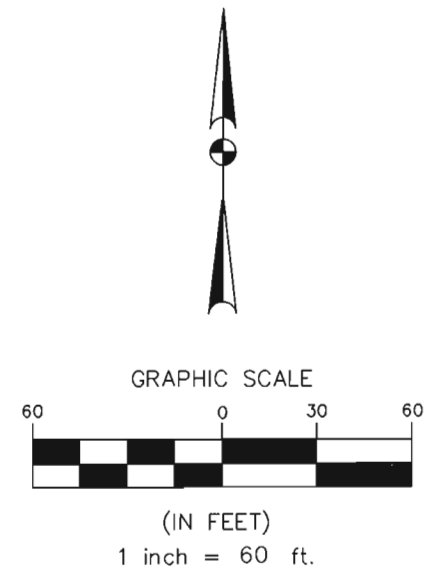
STANDARD LAND SURVEY
 OF
9.0191 ACRES
 SITUATED IN TRACT 8-1-93
 AREA 2, LOTS 137-140
 POSSUM KINGDOM LAKE
 G.B. & C.N.G. R.R. CO. SURVEY NO. 1
 ABSTRACT 1034
 PALO PINTO COUNTY, TEXAS

AECOM

AECOM USA GROUP, INC.
 1200 SUMMIT AVENUE, SUITE 600
 FORT WORTH, TEXAS 76102
 WWW.AECOM.COM
 817.698.6770

Date: 11/11/09 Project No. 60052528.103 60052528 R029By.dwg

SHEET 3 OF 5



POSSUM KINGDOM LAKE
 THE BRAZOS RIVER CONSERVATION
 AND RECLAMATION DISTRICT
 TRACT 8-1-93
 CAUSE NO. 2539
 DATED JULY 11, 1940
 VOLUME 5, PAGE 414
 J.R.P.P.C.T.

LEASE BLOCK R029
 AREA: 2

LOT 138

7.3072 ACRES
 318,301 SQ. FT.

G.B. & C.N.G. R.R. CO. SURVEY NO. 1
 ABSTRACT 1034

POSSUM KINGDOM LAKE
 THE BRAZOS RIVER CONSERVATION
 AND RECLAMATION DISTRICT
 TRACT 8-1-93
 CAUSE NO. 2539
 DATED JULY 11, 1940
 VOLUME 5, PAGE 414
 J.R.P.P.C.T.

STANDARD LAND SURVEY
 OF
9.0191 ACRES
 SITUATED IN TRACT 8-1-93
 AREA 2, LOTS 137-140
 POSSUM KINGDOM LAKE
 G.B. & C.N.G. R.R. CO. SURVEY NO. 1
 ABSTRACT 1034
 PALO PINTO COUNTY, TEXAS

AECOM

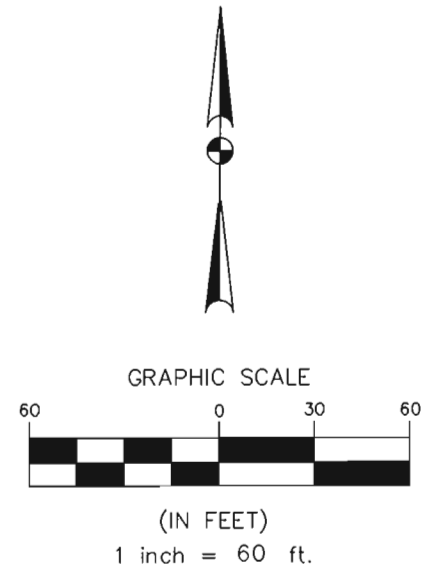
AECOM USA GROUP, INC.
 1200 SUMMIT AVENUE, SUITE 600
 FORT WORTH, TEXAS 76102
 WWW.AECOM.COM
 817.698.6770

SHEET 4 OF 5

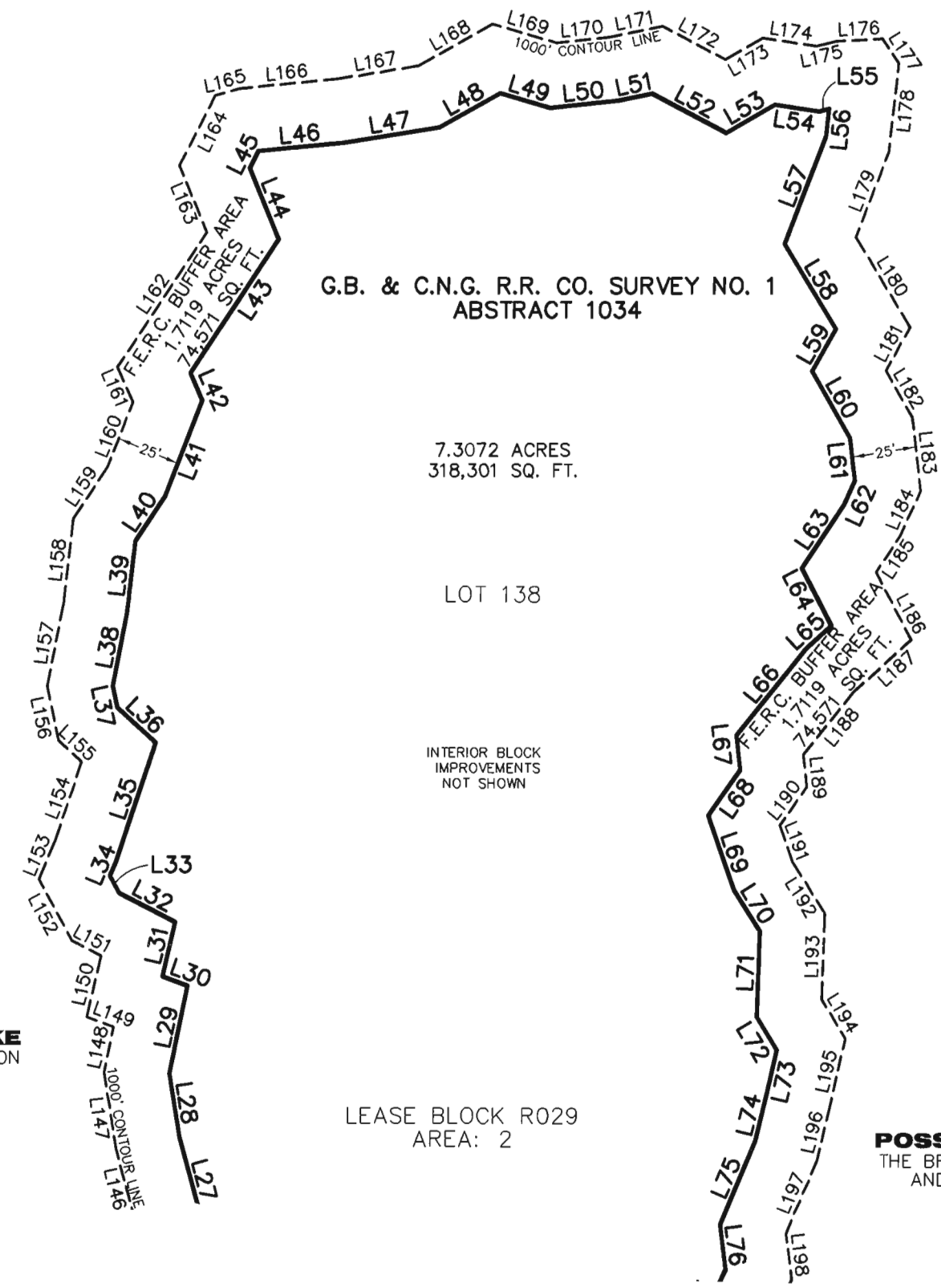
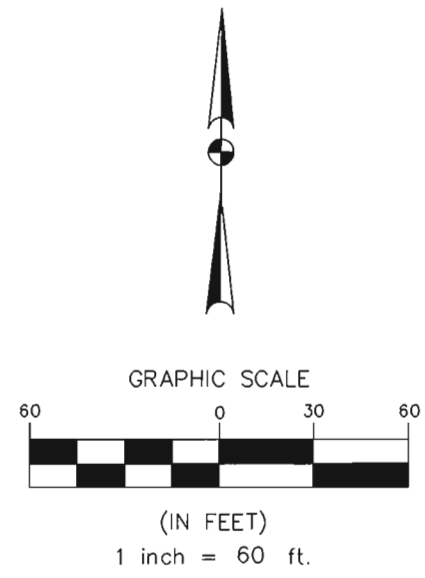
Date: 11/11/09

Project No. 60052528.103

60052528
 R029By.dwg



POSSUM KINGDOM LAKE
 THE BRAZOS RIVER CONSERVATION
 AND RECLAMATION DISTRICT
 TRACT 8-1-93
 CAUSE NO. 2539
 DATED JULY 11, 1940
 VOLUME 5, PAGE 414
 J.R.P.P.C.T.



POSSUM KINGDOM LAKE
 THE BRAZOS RIVER CONSERVATION
 AND RECLAMATION DISTRICT
 TRACT 8-1-93
 CAUSE NO. 2539
 DATED JULY 11, 1940
 VOLUME 5, PAGE 414
 J.R.P.P.C.T.

LEASE BLOCK R029
 AREA: 2

POSSUM KINGDOM LAKE
 THE BRAZOS RIVER CONSERVATION
 AND RECLAMATION DISTRICT
 TRACT 8-1-93
 CAUSE NO. 2539
 DATED JULY 11, 1940
 VOLUME 5, PAGE 414
 J.R.P.P.C.T.

STANDARD LAND SURVEY
 OF
9.0191 ACRES
 SITUATED IN TRACT 8-1-93
 AREA 2, LOTS 137-140
 POSSUM KINGDOM LAKE
 G.B. & C.N.G. R.R. CO. SURVEY NO. 1
 ABSTRACT 1034
 PALO PINTO COUNTY, TEXAS

AECOM	AECOM USA GROUP, INC. 1200 SUMMIT AVENUE, SUITE 600 FORT WORTH, TEXAS 76102 WWW.AECOM.COM 817.698.6770	
	Date: 11/11/09	Project No. 60052528.103