

LINE TABLE		
LINE	BEARING	DISTANCE
L1	S68°52'19"E	31.12'
L2	N45°59'36"W	24.34'
L3	N52°43'14"E	105.18'
L4	S32°39'31"E	11.80'
L5	N70°24'20"E	97.17'
L6	N46°49'27"W	130.80'
L7	N47°56'31"E	36.23'
L8	S16°13'31"E	53.33'
L9	S27°18'39"E	38.01'
L10	S33°36'10"E	35.43'
L11	S24°56'15"E	8.27'
L12	S38°26'52"E	24.13'
L13	S23°13'18"E	16.39'
L14	S07°58'07"E	31.08'
L15	S03°25'07"E	41.60'
L16	S24°59'51"E	35.03'
L17	S28°04'54"E	49.89'
L18	S32°13'28"E	15.86'
L19	S11°24'42"E	16.73'
L20	S11°01'44"E	30.98'
L21	S04°25'34"E	12.80'
L22	S15°05'52"E	33.38'
L23	S09°52'13"W	10.83'
L24	S42°22'25"W	38.98'
L25	S58°51'07"W	61.00'
L26	S49°53'49"W	63.69'
L27	S48°43'06"W	60.73'
L28	S42°11'21"W	14.23'
L29	S87°05'57"W	2.39'
L30	N84°43'38"W	5.61'
L31	N73°26'41"W	0.03'
L32	N27°34'17"W	32.28'
L33	N53°14'07"W	14.92'
L34	N57°00'29"W	43.48'
L35	S28°12'16"W	25.02'
L36	S08°01'31"W	15.59'
L37	S64°36'05"E	11.99'
L38	S56°56'44"E	6.45'
L39	S40°39'24"E	14.88'
L40	S43°58'44"E	21.53'
L41	S01°41'02"W	9.61'
L42	S04°10'22"W	5.91'
L43	S25°13'12"W	8.57'
L44	S44°39'30"W	44.75'
L45	S33°37'30"W	38.82'
L46	S41°18'45"W	0.37'
L47	S57°13'10"W	18.42'
L48	N75°55'50"W	18.18'
L49	N55°57'08"W	27.04'
L50	N31°35'56"W	61.95'
L51	N24°17'57"W	14.18'
L52	N87°00'40"W	10.64'
L53	S32°17'54"W	7.08'
L54	S68°25'47"W	36.08'
L55	S56°10'21"W	42.61'
L56	S44°51'43"W	5.13'
L57	S72°31'29"W	10.52'
L58	S59°10'39"W	21.71'
L59	S28°48'30"E	24.37'
L60	S53°12'58"E	26.80'
L61	S63°51'27"E	17.43'
L62	S61°03'08"E	27.15'
L63	S72°15'41"E	36.85'
L64	N80°42'52"E	22.48'
L65	N51°56'54"E	15.61'
L66	S35°43'32"E	20.05'
L67	S33°14'22"E	20.02'

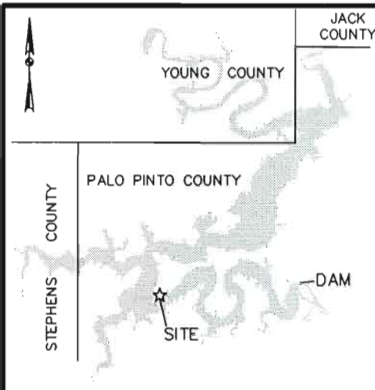
LINE TABLE		
LINE	BEARING	DISTANCE
L68	S78°14'15"E	29.66'
L69	N88°09'41"E	21.91'
L70	S43°43'54"E	38.78'
L71	S44°48'52"E	53.66'
L72	S41°22'45"E	66.38'
L73	S40°43'33"E	65.38'
L74	S47°49'30"E	48.43'
L75	S30°22'00"E	48.86'
L76	S00°25'28"W	32.87'
L77	S30°58'34"W	34.47'
L78	S47°23'47"W	37.33'
L79	S70°17'03"W	57.73'
L80	N45°11'48"W	25.40'
L81	S46°50'15"W	24.11'
L82	S03°21'21"W	23.54'
L83	S61°12'07"W	21.32'
L84	S52°44'19"W	31.84'
L85	N85°26'40"W	26.19'
L86	N86°05'01"W	29.13'
L87	S08°53'39"W	5.77'
L88	S40°31'54"E	17.86'
L89	S05°23'51"W	2.37'
L90	S45°15'10"W	65.48'
L91	S59°40'40"W	41.78'
L92	S33°44'45"W	66.73'
L93	S32°14'15"W	51.53'
L94	S38°30'26"W	50.34'
L95	S51°25'48"W	55.14'
L96	S58°15'33"W	59.43'
L97	S49°33'01"W	60.03'
L98	S62°22'25"W	34.25'
L99	S47°22'23"W	63.82'
L100	S63°51'30"W	63.46'
L101	S54°06'34"W	62.34'
L102	S45°06'43"W	48.85'
L103	S30°55'34"W	41.98'
L104	S42°36'35"W	61.52'
L105	S46°32'44"W	36.52'
L106	S45°50'24"W	52.65'
L107	S23°29'35"W	5.52'
L108	S35°53'33"W	32.64'
L109	S46°34'42"W	47.35'
L110	S72°39'23"W	10.10'
L111	S37°26'57"W	56.98'
L112	S50°34'34"W	48.06'
L113	S65°50'25"W	34.37'
L114	N53°50'57"W	18.02'
L115	S70°30'53"W	7.37'
L116	N54°32'16"W	18.54'
L117	S58°59'53"W	14.65'
L118	S02°16'03"E	36.73'
L119	S34°18'03"W	44.60'
L120	S33°25'20"W	70.04'
L121	S46°54'36"W	37.77'
L122	S50°12'52"W	16.66'
L123	S53°14'49"W	29.07'
L124	S27°59'34"W	3.09'
L125	S61°20'53"W	28.66'
L126	S73°36'58"W	20.42'
L127	S55°47'08"W	22.53'
L128	S89°01'00"W	8.55'
L129	S79°13'45"W	36.79'
L130	S52°05'35"W	75.97'
L131	S01°07'03"W	55.64'
L132	S32°03'29"W	34.18'
L133	S12°52'18"W	10.37'
L134	S03°28'52"W	30.45'

LINE TABLE		
LINE	BEARING	DISTANCE
L135	S14°50'39"E	28.70'
L136	S02°13'17"E	80.78'
L137	S88°31'47"W	36.48'
L138	N40°19'19"W	14.89'
L139	S88°14'27"W	79.05'
L140	S84°56'43"W	10.37'
L141	S88°26'45"W	13.65'
L142	N83°42'04"E	25.38'
L143	S16°13'31"E	46.53'
L144	S27°18'39"E	34.21'
L145	S33°36'10"E	35.95'
L146	S24°56'15"E	27.24'
L147	S58°11'52"W	7.71'
L148	S67°52'48"E	4.92'
L149	S38°26'52"E	33.91'
L150	S23°13'18"E	23.08'
L151	S07°58'07"E	35.42'
L152	S03°25'07"E	37.83'
L153	S24°59'51"E	29.59'
L154	S28°04'54"E	48.31'
L155	S32°13'28"E	19.55'
L156	S11°24'42"E	21.40'
L157	S11°01'44"E	32.51'
L158	S04°25'34"E	11.90'
L159	S81°59'30"E	16.39'
L160	S04°58'50"E	20.43'
L161	S60°42'59"E	3.96'
L162	S72°43'44"W	14.32'
L163	S19°37'52"E	5.76'
L164	S09°52'13"W	24.74'
L165	S42°22'25"W	49.89'
L166	S58°51'07"W	62.66'
L167	S49°53'49"W	61.47'
L168	S48°43'06"W	59.04'
L169	S42°11'21"W	38.17'
L170	S87°05'57"W	3.06'
L171	N84°43'38"W	9.87'
L172	N73°26'41"W	13.08'
L173	N27°34'17"W	42.52'
L174	N53°14'07"W	19.66'
L175	N57°00'29"W	42.65'
L176	S28°12'16"W	20.57'
L177	S08°01'31"W	11.14'
L178	S64°36'05"E	13.66'
L179	S56°56'44"E	11.70'
L180	S40°39'24"E	17.73'
L181	S43°58'43"E	25.43'
L182	S01°41'02"W	23.58'
L183	N86°22'34"W	3.91'
L184	S04°10'22"W	5.91'
L185	S81°40'46"E	3.79'
L186	S25°13'12"W	22.38'
L187	S44°39'30"W	46.62'
L188	S33°37'30"W	38.09'
L189	S41°18'45"W	5.54'
L190	S57°13'10"W	32.74'
L191	N75°55'50"W	33.41'
L192	N55°57'08"W	36.83'
L193	N31°35'56"W	68.94'
L194	N24°17'57"W	15.78'
L195	N87°00'40"W	10.64'
L196	S32°17'54"W	15.23'
L197	S68°25'47"W	41.55'
L198	S56°10'21"W	37.45'
L199	S44°51'43"W	8.81'
L200	S72°31'29"W	13.75'
L201	S59°10'39"W	18.78'

LINE TABLE		
LINE	BEARING	DISTANCE
L202	S28°48'30"E	18.97'
L203	S53°12'58"E	19.06'
L204	S63°51'27"E	15.10'
L205	N43°48'41"E	3.41'
L206	S61°03'08"E	36.23'
L207	S72°15'41"E	28.39'
L208	N80°42'52"E	10.06'
L209	N51°56'54"E	22.46'
L210	N88°06'05"E	7.91'
L211	S64°13'43"E	12.98'
L212	S35°43'32"E	43.06'
L213	S24°48'12"W	7.83'
L214	S33°14'22"E	9.66'
L215	S78°14'15"E	16.32'
L216	N22°52'44"E	4.83'
L217	S79°36'26"E	20.72'
L218	S60°37'04"E	20.05'
L219	S43°43'54"E	35.75'
L220	S44°48'52"E	54.17'
L221	S41°22'45"E	67.27'
L222	S40°43'33"E	63.97'
L223	S47°49'30"E	50.72'
L224	S30°22'00"E	59.58'
L225	S00°25'28"W	46.58'
L226	S30°58'34"W	44.91'
L227	S47°23'47"W	46.00'
L228	S70°17'03"W	78.58'
L229	N45°11'48"W	41.18'
L230	S46°50'15"W	14.14'
L231	S03°21'21"W	27.38'
L232	S61°12'07"W	33.28'
L233	S52°44'19"W	39.54'
L234	N85°26'40"W	35.61'
L235	N86°05'01"W	28.99'
L236	S08°53'39"W	5.77'
L237	S40°31'54"E	28.45'
L238	S05°23'51"W	22.03'
L239	S45°15'10"W	77.70'
L240	S59°40'40"W	39.19'
L241	S33°44'45"W	60.64'
L242	S32°14'15"W	52.57'
L243	S38°30'26"W	54.54'
L244	S51°25'48"W	59.46'
L245	S58°15'33"W	59.02'
L246	S49°33'01"W	60.96'
L247	S62°29'24"W	33.76'
L248	S47°22'23"W	64.13'
L249	S63°51'30"W	64.95'
L250	S54°06'34"W	58.24'
L251	S45°06'43"W	43.77'
L252	S30°55'34"W	41.43'
L253	S42°36'35"W	64.93'
L254	S46°32'44"W	37.23'
L255	S45°50'24"W	47.56'
L256	S23°29'35"W	3.30'
L257	S35°53'33"W	37.69'
L258	S46°34'42"W	55.47'
L259	S72°39'23"W	7.95'
L260	S37°26'57"W	51.93'
L261	S50°34'34"W	50.94'
L262	S65°50'25"W	52.91'
L263	N53°50'57"W	26.33'
L264	S70°30'53"W	20.06'
L265	N55°58'40"W	10.36'
L266	N54°32'16"W	21.36'
L267	S58°59'53"W	14.65'
L268	S02°16'03"E	44.99'

LINE TABLE		
LINE	BEARING	DISTANCE
L269	S34°18'03"W	52.67'
L270	S33°25'20"W	60.95'
L271	S44°16'44"E	2.77'
L272	S46°54'36"W	52.32'
L273	S42°14'01"E	5.08'
L274	S50°12'52"W	32.65'
L275	S53°14'49"W	24.13'
L276	S38°59'33"E	2.63'
L277	S56°57'30"W	5.00'
L278	S69°20'00"W	1.70'
L279	S61°20'53"W	36.79'
L280	S73°36'58"W	19.18'
L281	S55°47'08"W	26.07'
L282	S89°01'00"W	13.87'
L283	S79°13'45"W	28.62'
L284	S52°05'35"W	58.02'
L285	S01°07'03"W	35.58'
L286	S48°42'08"E	3.85'
L287	S58°22'04"E	3.94'
L288	S32°03'29"W	73.01'
L289	N71°07'01"W	23.30'
L290	S12°52'18"W	10.37'
L291	S71°48'17"E	19.80'
L292	S33°00'13"W	12.76'
L293	S03°28'52"W	32.15'
L294	N89°28'29"E	7.42'
L295	S02°39'43"E	26.51'
L296	S86°13'24"W	1.62'
L297	S02°13'17"E	108.87'
L298	S88°31'47"W	73.77'
L299	N40°19'19"W	14.82'
L300	S88°14'27"W	88.47'
L301	N04°54'57"W	13.54'
L302	S84°56'43"W	10.37'
L303	S05°09'45"E	12.99'
L304	S88°26'45"W	41.34'
L305	N09°39'17"E	25.49'

CURVE TABLE					
CURVE	LENGTH	DELTA	RADIUS	CHORD BEARING	CHORD
C1	37.07'	84°57'59"	25.00'	S21°21'50"E	33.77'
C2	23.70'	25°28'38"	53.30'	N75°45'44"W	23.51'
C3	42.56'	45°57'46"	53.05'	N51°53'08"W	41.43'
C4	41.36'	94°47'15"	25.00'	S75°35'53"W	36.80'
C5	31.69'	72°37'36"	25.00'	S28°17'17"E	29.61'
C6	6.70'	31°28'04"	12.20'	S00°37'23"W	6.62'
C7	33.28'	12°19'38"	154.69'	S06°00'13"W	33.22'
C8	13.08'	29°58'13"	25.00'	S19°09'28"W	12.93'
C9	9.43'	21°36'30"	25.00'	S06°37'53"E	9.37'
C10	27.36'	62°42'43"	25.00'	N55°39'18"W	26.02'
C11	26.48'	60°41'26"	25.00'	S62°38'37"W	25.26'
C12	38.39'	87°59'09"	25.00'	S15°11'04"W	34.73'
C13	11.76'	26°56'39"	25.00'	S77°19'47"E	11.65'
C14	17.82'	40°50'21"	25.00'	S12°49'11"E	17.44'
C15	38.38'	87°57'57"	25.00'	N89°10'47"W	34.72'
C16	37.10'	85°01'20"	25.00'	S51	



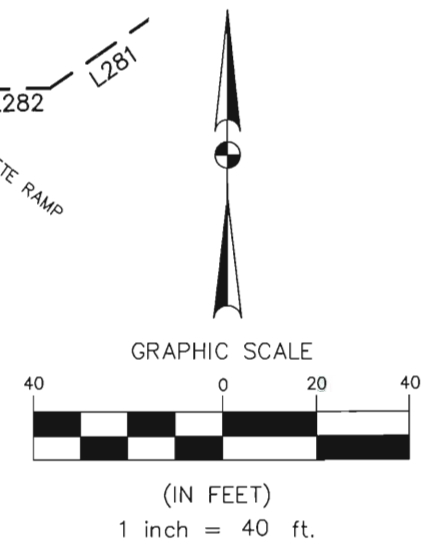
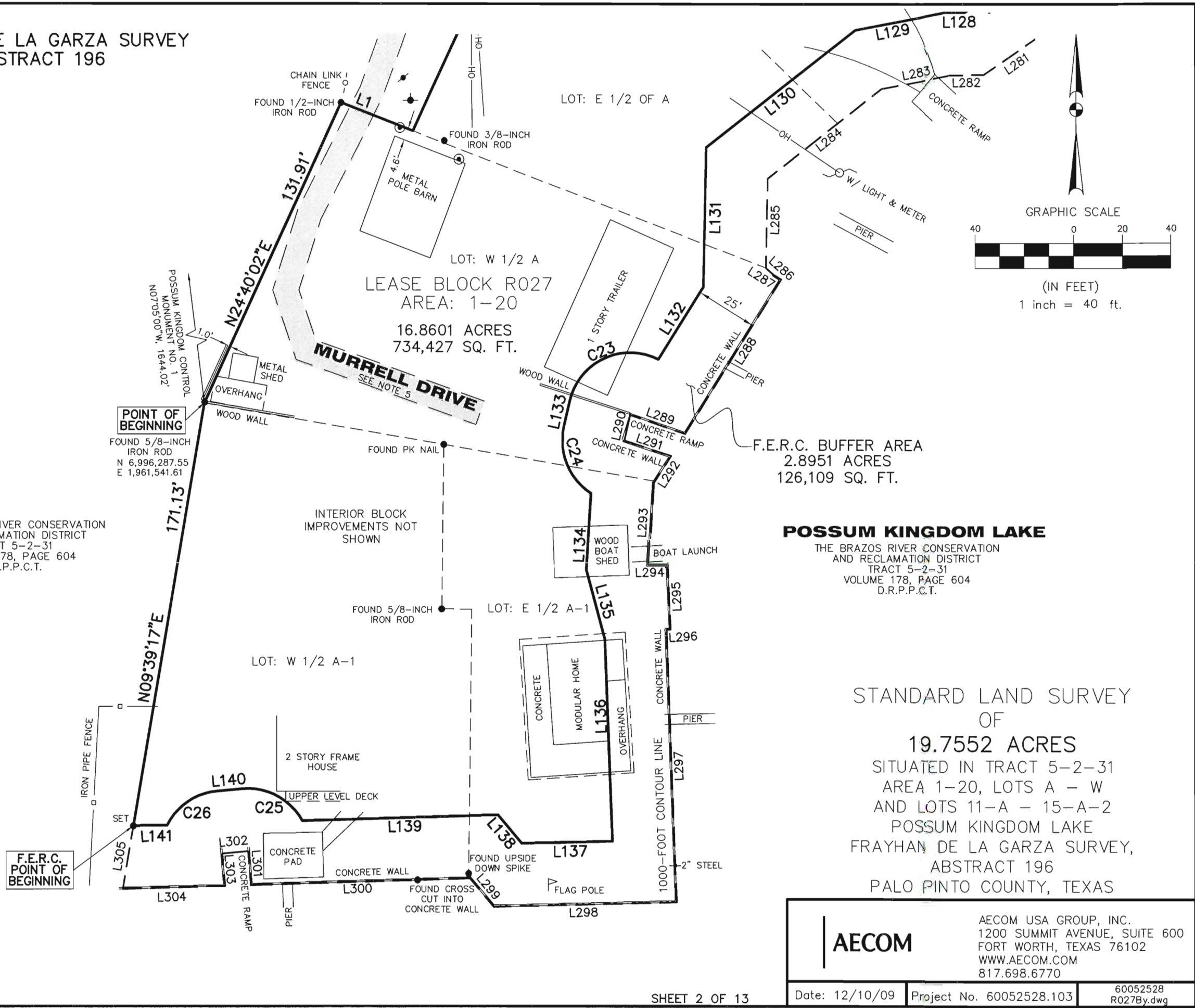
VICINITY MAP
NOT TO SCALE

FRAYHAN DE LA GARZA SURVEY ABSTRACT 196

THE BRAZOS RIVER CONSERVATION
AND RECLAMATION DISTRICT
TRACT 5-2-31
VOLUME 178, PAGE 604
D.R.P.P.C.T.

- LEGEND**
- = LEASE CORNER MARKER "AS NOTED"
 - = TELEPHONE BOX
 - ⊙ = WATER METER
 - ⊛ = LIGHT
 - ⊙ = WATER VALVE
 - ⚑ = FLAG POLE
 - ⊙ = FIRE HYDRANT
 - OH = OVERHEAD LINES
 - ⊕ = POWER POLE

- NOTES:**
- BEARINGS AND COORDINATES SHOWN HEREON ARE BASED ON THE NORTH AMERICAN DATUM OF 1983, TEXAS COORDINATE SYSTEM, NORTH CENTRAL ZONE (4202).
 - 1,000-FOOT CONTOUR ELEVATION OF POSSUM KINGDOM LAKE IS DETERMINED BASED ON MEASUREMENTS FROM THE TOP OF THE EXISTING SPILLWAY CREST GATES AT THE MORRIS SHEPPARD DAM BEING AT ELEVATION 1,000-FEET ABOVE MEAN SEA LEVEL AS NOTED IN FEDERAL POWER COMMISSION REPORT PROJECT NO. 1490 - TEXAS ON JUNE 2, 1938.
 - SET = 5/8" IRON ROD W/CAP STAMPED "AECOM" SET; D.R.P.P.C.T.= DEED RECORDS, PALO PINTO COUNTY, TEXAS; P.R.P.P.C.T.= PLAT RECORDS, PALO PINTO COUNTY, TEXAS; F.E.R.C.= FEDERAL ENERGY REGULATORY COMMISSION; J.R.P.P.C.T.= JUDGEMENT RECORDS, PALO PINTO COUNTY, TEXAS.
 - METES AND BOUNDS DESCRIPTIONS TO ACCOMPANY THIS SURVEY.
 - LOCATION OF ROAD PROVIDED BY LINK FIELD SERVICES, DATED JANUARY 15, 2010, AS SHOWN SHADED HEREON.



POSSUM KINGDOM LAKE
THE BRAZOS RIVER CONSERVATION
AND RECLAMATION DISTRICT
TRACT 5-2-31
VOLUME 178, PAGE 604
D.R.P.P.C.T.

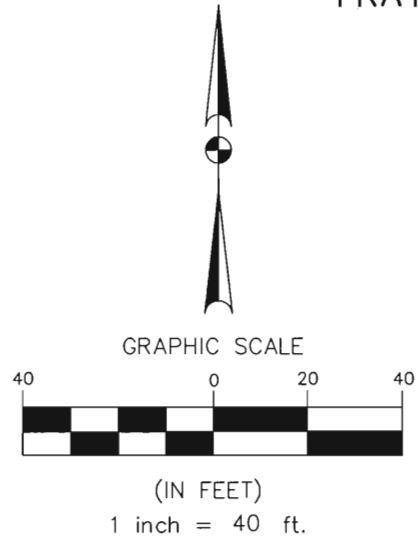
STANDARD LAND SURVEY
OF
19.7552 ACRES
SITUATED IN TRACT 5-2-31
AREA 1-20, LOTS A - W
AND LOTS 11-A - 15-A-2
POSSUM KINGDOM LAKE
FRAYHAN DE LA GARZA SURVEY,
ABSTRACT 196
PALO PINTO COUNTY, TEXAS

AECOM	AECOM USA GROUP, INC. 1200 SUMMIT AVENUE, SUITE 600 FORT WORTH, TEXAS 76102 WWW.AECOM.COM 817.698.6770	
	Date: 12/10/09	Project No. 60052528.103

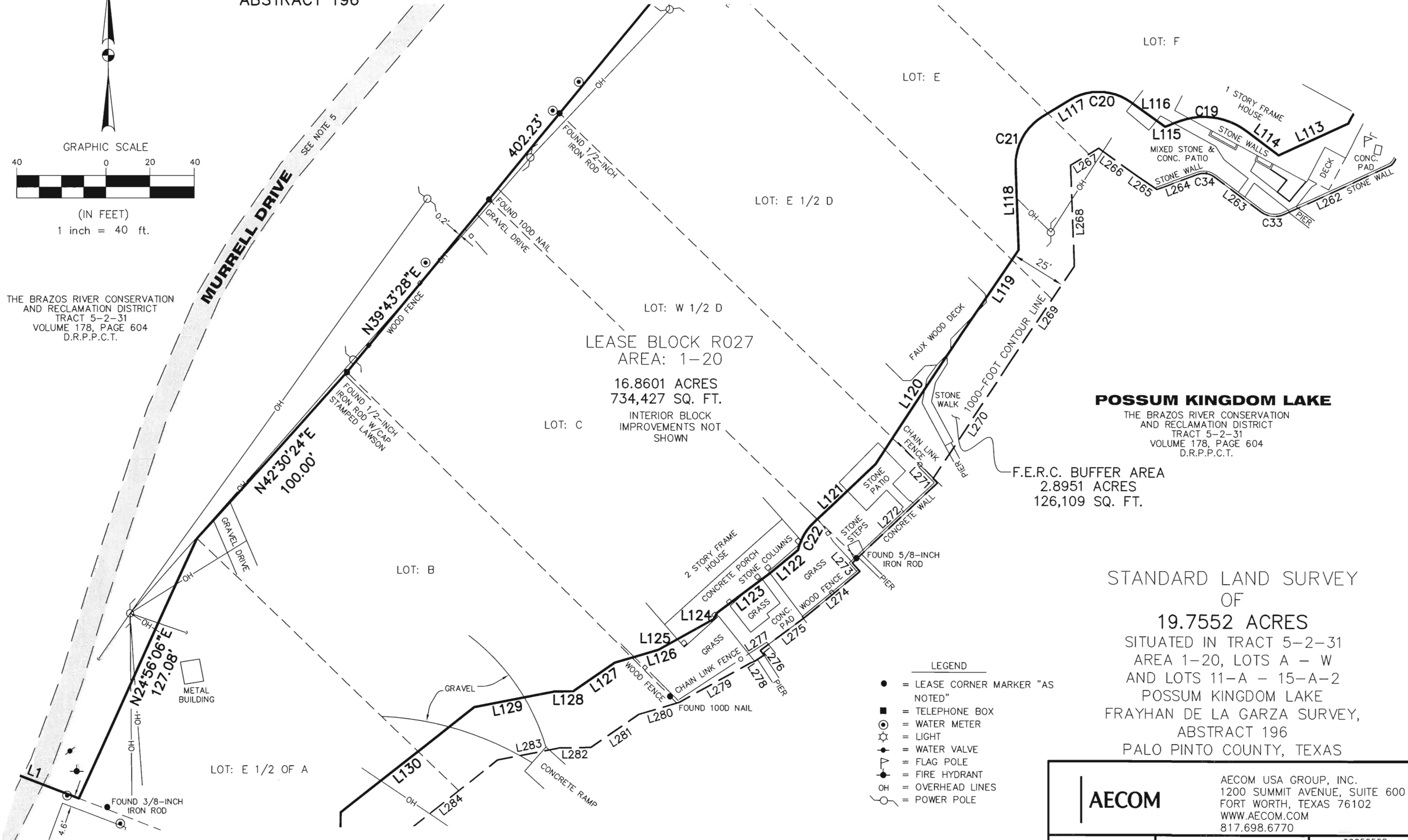
NO PART OR PARTS OF THIS DRAWING MAY BE REPRODUCED OR RETRANSMITTED IN ANY WAY OR FORM (ELECTRONIC, MECHANICAL, PHOTOCOPYING, OR OTHERWISE) WITHOUT THE EXPRESS WRITTEN PERMISSION OF AECOM.

S:\Survey\Projects\60052528\3.0 Ref Docs Drafting\Blocks\R027\60052528 R027By.dwg 2/26/2010 11:02:00 AM CST

FRAYHAN DE LA GARZA SURVEY
ABSTRACT 196



THE BRAZOS RIVER CONSERVATION
AND RECLAMATION DISTRICT
TRACT 5-2-31
VOLUME 178, PAGE 604
D.R.P.P.C.T.



LEASE BLOCK R027
AREA: 1-20

16.8601 ACRES
734,427 SQ. FT.
INTERIOR BLOCK
IMPROVEMENTS NOT
SHOWN

POSSUM KINGDOM LAKE
THE BRAZOS RIVER CONSERVATION
AND RECLAMATION DISTRICT
TRACT 5-2-31
VOLUME 178, PAGE 604
D.R.P.P.C.T.

F.E.R.C. BUFFER AREA
2.8951 ACRES
126,109 SQ. FT.

STANDARD LAND SURVEY
OF
19.7552 ACRES
SITUATED IN TRACT 5-2-31
AREA 1-20, LOTS A - W
AND LOTS 11-A - 15-A-2
POSSUM KINGDOM LAKE
FRAYHAN DE LA GARZA SURVEY,
ABSTRACT 196
PALO PINTO COUNTY, TEXAS

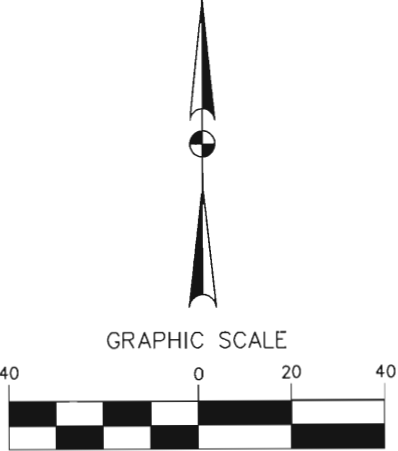
- LEGEND
- = LEASE CORNER MARKER "AS NOTED"
 - = TELEPHONE BOX
 - ⊙ = WATER METER
 - ⊛ = LIGHT
 - ⊕ = WATER VALVE
 - ⚑ = FLAG POLE
 - ⚡ = FIRE HYDRANT
 - OH = OVERHEAD LINES
 - ⊖ = POWER POLE

AECOM	AECOM USA GROUP, INC. 1200 SUMMIT AVENUE, SUITE 600 FORT WORTH, TEXAS 76102 WWW.AECOM.COM 817.698.6770	
	Date: 12/10/09	Project No. 60052528.103

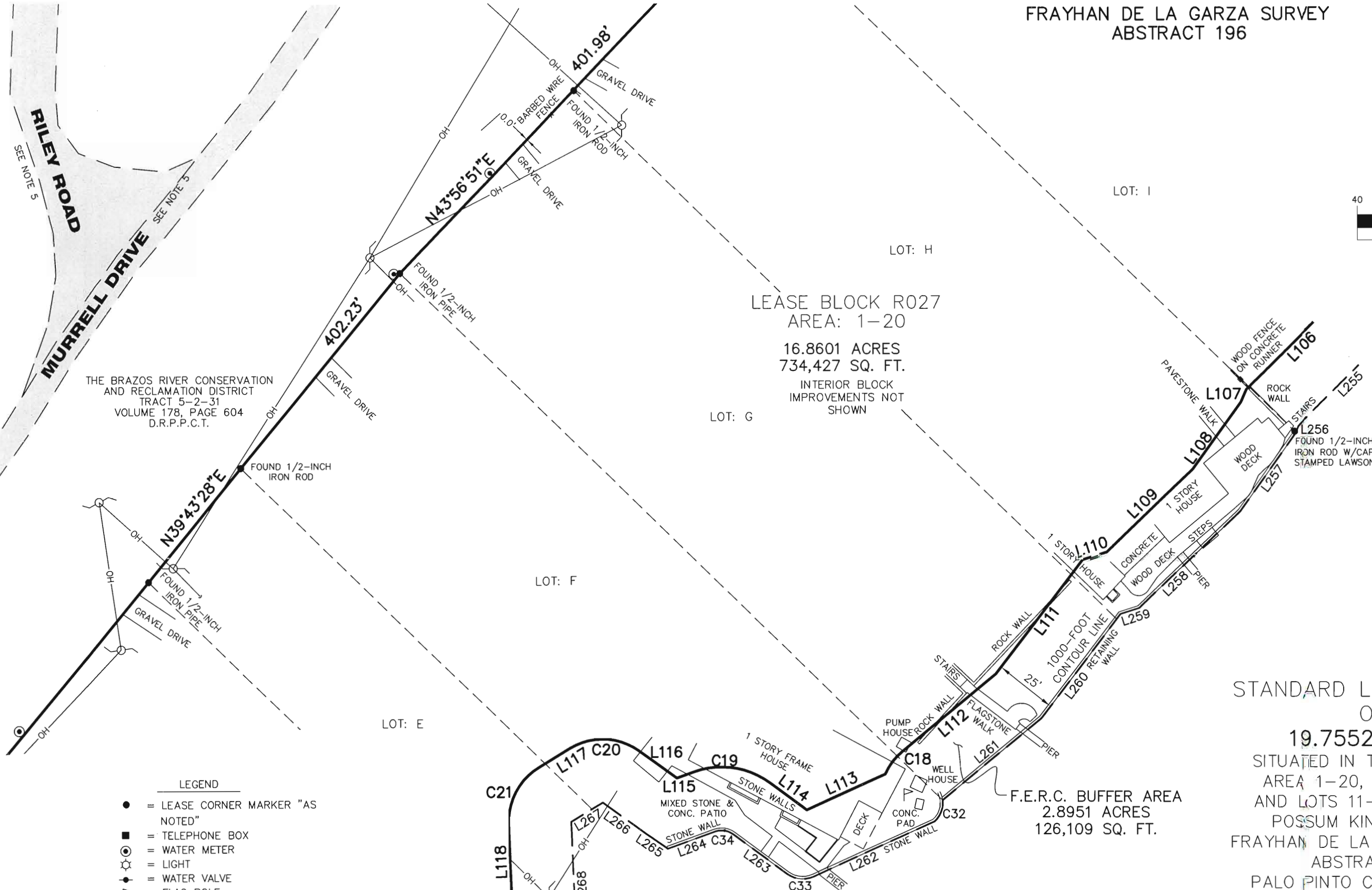
NO PART OR PARTS OF THIS DRAWING MAY BE REPRODUCED OR RE TRANSMITTED IN ANY WAY OR FORM (ELECTRONIC, MECHANICAL, PHOTOCOPYING, OR OTHERWISE) WITHOUT THE EXPRESS WRITTEN PERMISSION OF AECOM.

S:\Survcon\Projects\60052528\3.0 Ref Docs\Drafting\Blocks\R027\60052528 R027By.dwg 2/26/2010 11:02:00 AM CST

FRAYHAN DE LA GARZA SURVEY
ABSTRACT 196



(IN FEET)
1 inch = 40 ft.



THE BRAZOS RIVER CONSERVATION
AND RECLAMATION DISTRICT
TRACT 5-2-31
VOLUME 178, PAGE 604
D.R.P.P.C.T.

LEASE BLOCK R027
AREA: 1-20
16.8601 ACRES
734,427 SQ. FT.
INTERIOR BLOCK
IMPROVEMENTS NOT
SHOWN

STANDARD LAND SURVEY OF
19.7552 ACRES
SITUATED IN TRACT 5-2-31
AREA 1-20, LOTS A - W
AND LOTS 11-A - 15-A-2
POSSUM KINGDOM LAKE
FRAYHAN DE LA GARZA SURVEY,
ABSTRACT 196
PALO PINTO COUNTY, TEXAS

- LEGEND
- = LEASE CORNER MARKER "AS NOTED"
 - = TELEPHONE BOX
 - ⊙ = WATER METER
 - ⊛ = LIGHT
 - ⊙ = WATER VALVE
 - ⊙ = FLAG POLE
 - ⊙ = FIRE HYDRANT
 - OH = OVERHEAD LINES
 - ⊙ = POWER POLE

POSSUM KINGDOM LAKE
THE BRAZOS RIVER CONSERVATION
AND RECLAMATION DISTRICT
TRACT 5-2-31
VOLUME 178, PAGE 604
D.R.P.P.C.T.

AECOM	AECOM USA GROUP, INC. 1200 SUMMIT AVENUE, SUITE 600 FORT WORTH, TEXAS 76102 WWW.AECOM.COM 817.698.6770	
	Date: 12/10/09	Project No. 60052528.103

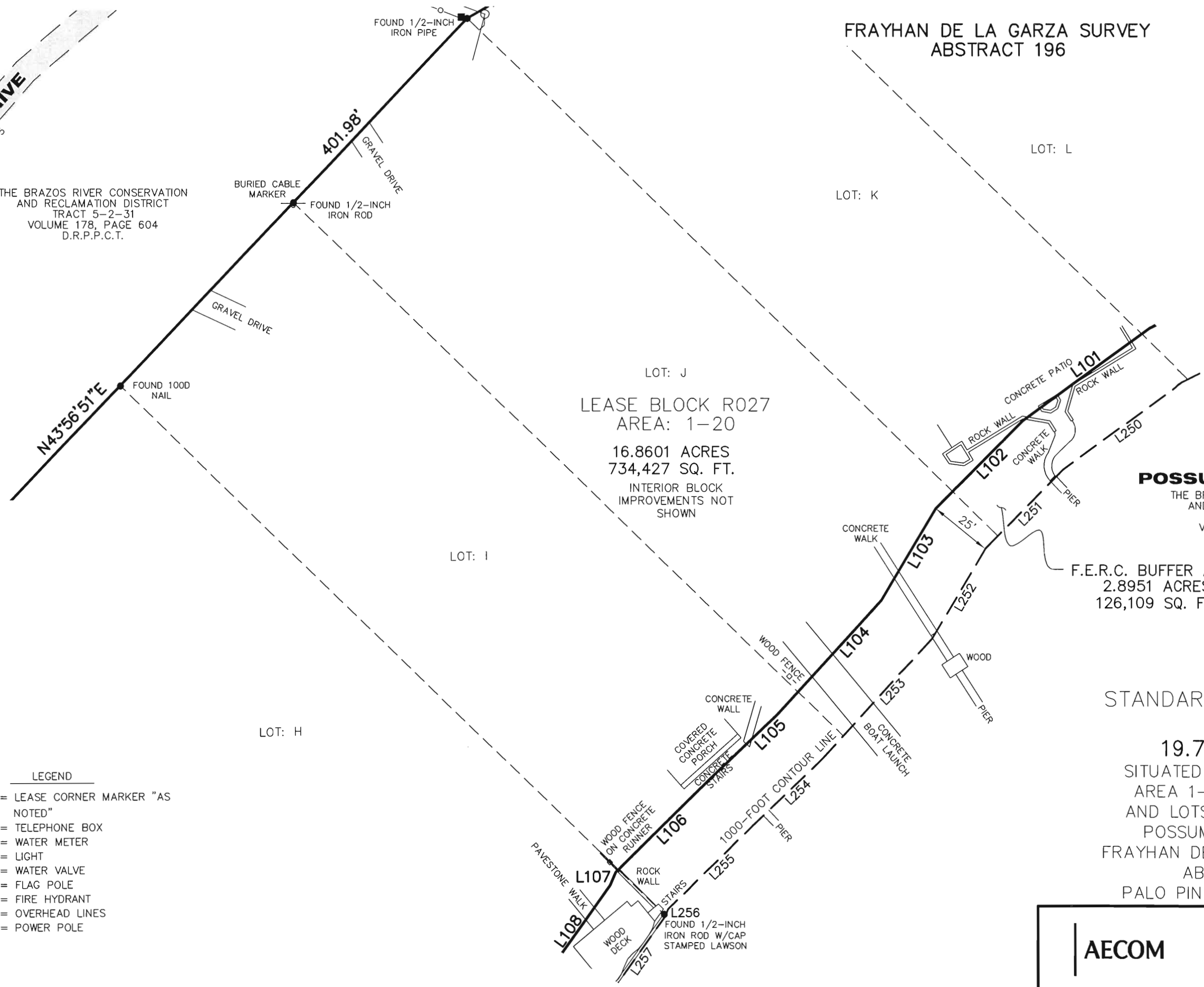
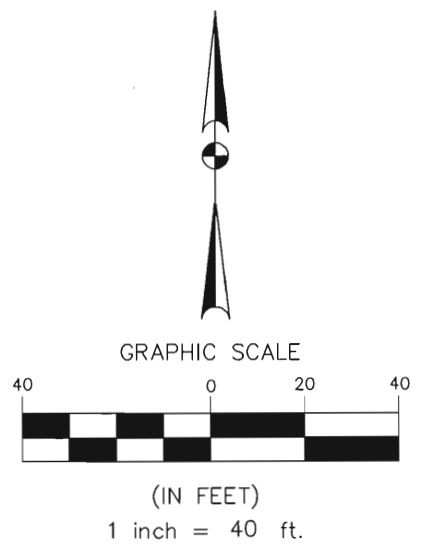
NO PART OR PARTS OF THIS DRAWING MAY BE REPRODUCED OR TRANSMITTED IN ANY WAY OR FORM (ELECTRONIC, MECHANICAL, PHOTOCOPYING, OR OTHERWISE) WITHOUT THE EXPRESS WRITTEN PERMISSION OF AECOM.

S:\Survey\Projects\60052528\3.0 Ref Docs\Drafting\Blocks\R027By.dwg 2/26/2010 11:02:00 AM CST

MURRELL DRIVE
SEE NOTE 5

THE BRAZOS RIVER CONSERVATION
AND RECLAMATION DISTRICT
TRACT 5-2-31
VOLUME 178, PAGE 604
D.R.P.P.C.T.

FRAYHAN DE LA GARZA SURVEY
ABSTRACT 196



LOT: J
LEASE BLOCK R027
AREA: 1-20
16.8601 ACRES
734,427 SQ. FT.
INTERIOR BLOCK
IMPROVEMENTS NOT
SHOWN

POSSUM KINGDOM LAKE
THE BRAZOS RIVER CONSERVATION
AND RECLAMATION DISTRICT
TRACT 5-2-31
VOLUME 178, PAGE 604
D.R.P.P.C.T.

F.E.R.C. BUFFER AREA
2.8951 ACRES
126,109 SQ. FT.

STANDARD LAND SURVEY
OF
19.7552 ACRES
SITUATED IN TRACT 5-2-31
AREA 1-20, LOTS A - W
AND LOTS 11-A - 15-A-2
POSSUM KINGDOM LAKE
FRAYHAN DE LA GARZA SURVEY,
ABSTRACT 196
PALO PINTO COUNTY, TEXAS

- LEGEND**
- = LEASE CORNER MARKER "AS NOTED"
 - = TELEPHONE BOX
 - ⊙ = WATER METER
 - ⊛ = LIGHT
 - ⊕ = WATER VALVE
 - ⚑ = FLAG POLE
 - ⦿ = FIRE HYDRANT
 - OH = OVERHEAD LINES
 - ⚡ = POWER POLE

AECOM	AECOM USA GROUP, INC. 1200 SUMMIT AVENUE, SUITE 600 FORT WORTH, TEXAS 76102 WWW.AECOM.COM 817.698.6770	
	Date: 12/10/09	Project No. 60052528.103

NO PART OR PARTS OF THIS DRAWING MAY BE REPRODUCED OR RETRANSMITTED IN ANY WAY OR FORM (ELECTRONIC, MECHANICAL, PHOTOCOPYING, OR OTHERWISE) WITHOUT THE EXPRESS WRITTEN PERMISSION OF AECOM.

S:\Survey\Projects\60052528\3.0 Ref Docs\Drafting\Blocks\R027\60052528 R027By.dwg 2/26/2010 11:02:00 AM CST

FRAYHAN DE LA GARZA SURVEY
ABSTRACT 196

THE BRAZOS RIVER CONSERVATION
AND RECLAMATION DISTRICT
TRACT 5-2-31
VOLUME 178, PAGE 604
D.R.P.P.C.T.

HIDEAWAY LANE
SEE NOTE 5

LEASE BLOCK R027
AREA: 1-20

16.8601 ACRES
734,427 SQ. FT.

INTERIOR BLOCK
IMPROVEMENTS NOT
SHOWN

LOT: O

LOT: N

LOT: M

LOT: L

LOT: K

POSSUM KINGDOM LAKE

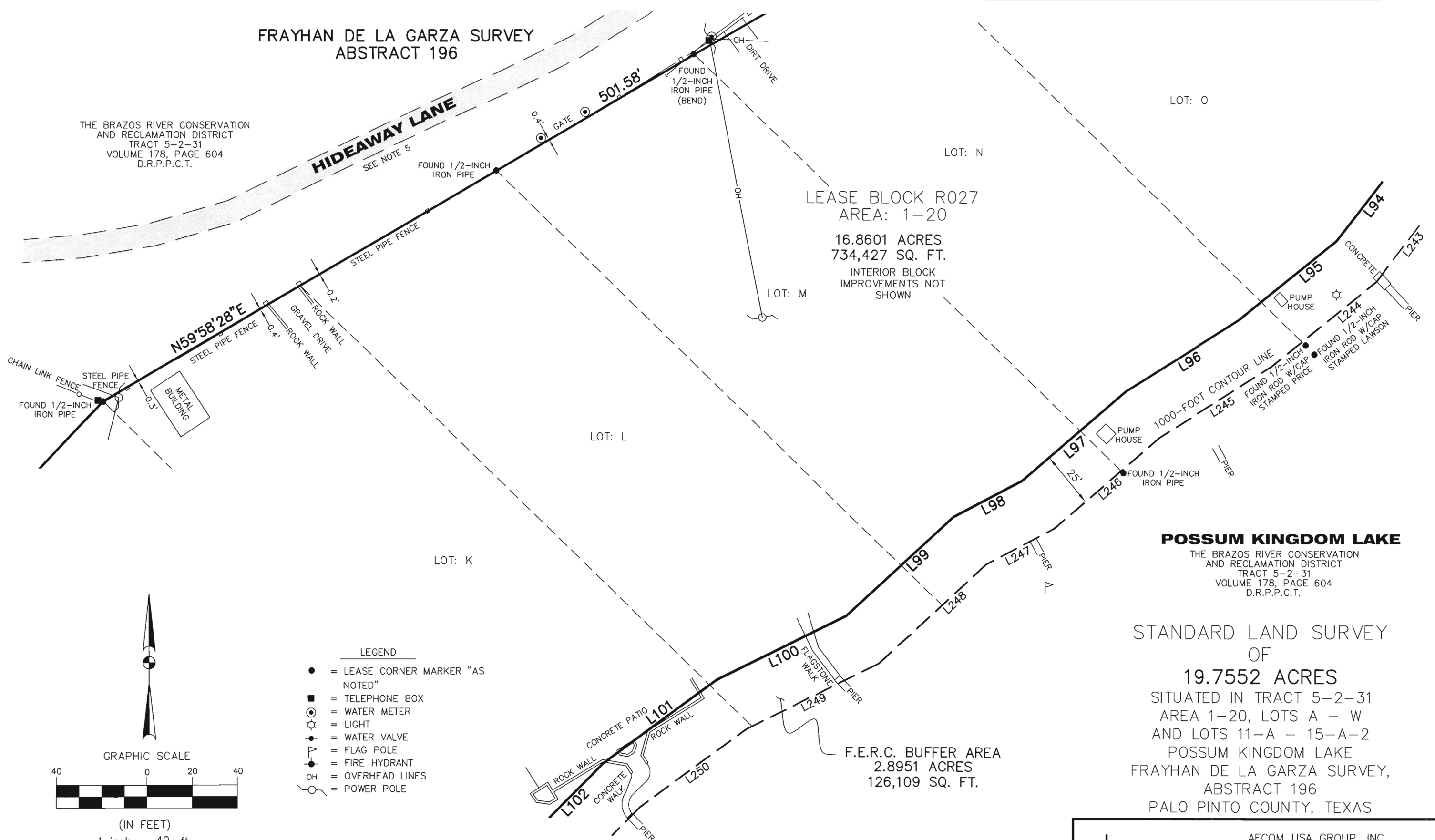
THE BRAZOS RIVER CONSERVATION
AND RECLAMATION DISTRICT
TRACT 5-2-31
VOLUME 178, PAGE 604
D.R.P.P.C.T.

STANDARD LAND SURVEY
OF

19.7552 ACRES

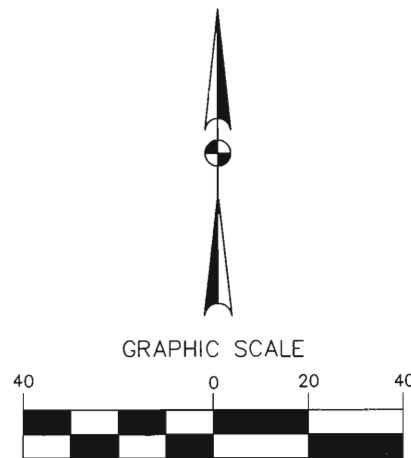
SITUATED IN TRACT 5-2-31
AREA 1-20, LOTS A - W
AND LOTS 11-A - 15-A-2
POSSUM KINGDOM LAKE
FRAYHAN DE LA GARZA SURVEY,
ABSTRACT 196
PALO PINTO COUNTY, TEXAS

F.E.R.C. BUFFER AREA
2.8951 ACRES
126,109 SQ. FT.



LEGEND

- = LEASE CORNER MARKER "AS NOTED"
- = TELEPHONE BOX
- ⊙ = WATER METER
- ⊛ = LIGHT
- ⊙ = WATER VALVE
- ⚑ = FLAG POLE
- ⊙ = FIRE HYDRANT
- OH = OVERHEAD LINES
- ⊙ = POWER POLE

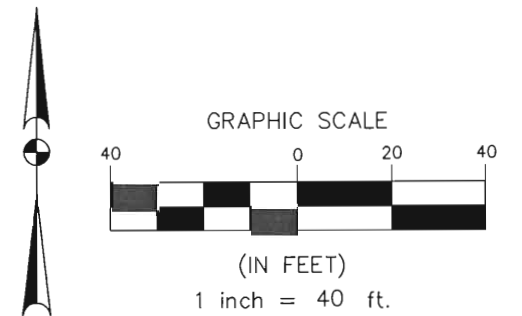


(IN FEET)
1 inch = 40 ft.

AECOM

AECOM USA GROUP, INC.
1200 SUMMIT AVENUE, SUITE 600
FORT WORTH, TEXAS 76102
WWW.AECOM.COM
817.698.6770

FRAYHAN DE LA GARZA SURVEY
ABSTRACT 196



THE BRAZOS RIVER CONSERVATION
AND RECLAMATION DISTRICT
TRACT 5-2-31
VOLUME 178, PAGE 604
D.R.P.P.C.T.

HIDEAWAY LANE

LEASE BLOCK R027
AREA: 1-20
16.8601 ACRES
734,427 SQ. FT.
INTERIOR BLOCK
IMPROVEMENTS NOT
SHOWN

POSSUM KINGDOM LAKE
THE BRAZOS RIVER CONSERVATION
AND RECLAMATION DISTRICT
TRACT 5-2-31
VOLUME 178, PAGE 604
D.R.P.P.C.T.

STANDARD LAND SURVEY
OF
19.7552 ACRES
SITUATED IN TRACT 5-2-31
AREA 1-20, LOTS A - W
AND LOTS 11-A - 15-A-2
POSSUM KINGDOM LAKE
FRAYHAN DE LA GARZA SURVEY,
ABSTRACT 196
PALO PINTO COUNTY, TEXAS

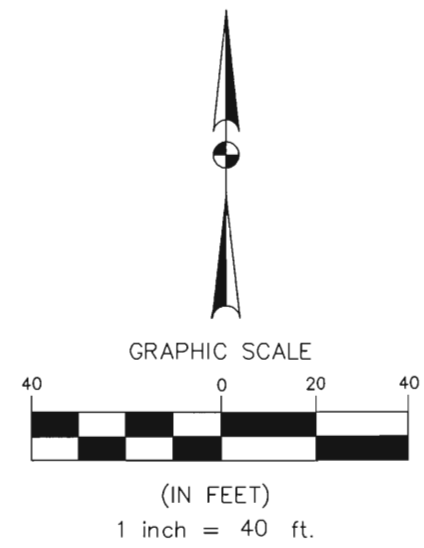
- LEGEND**
- = LEASE CORNER MARKER "AS NOTED"
 - = TELEPHONE BOX
 - ⊙ = WATER METER
 - ⊛ = LIGHT
 - ⊙ = WATER VALVE
 - ▽ = FLAG POLE
 - ⊙ = FIRE HYDRANT
 - OH = OVERHEAD LINES
 - = POWER POLE

AECOM	AECOM USA GROUP, INC. 1200 SUMMIT AVENUE, SUITE 600 FORT WORTH, TEXAS 76102 WWW.AECOM.COM 817.698.6770	
	Date: 12/10/09	Project No. 60052528.103

NO PART OR PARTS OF THIS DRAWING MAY BE REPRODUCED OR RE TRANSMITTED IN ANY WAY OR FORM (ELECTRONIC, MECHANICAL, PHOTOCOPYING, OR OTHERWISE) WITHOUT THE EXPRESS WRITTEN PERMISSION OF AECOM.

FRAYHAN DE LA GARZA SURVEY
ABSTRACT 196

THE BRAZOS RIVER CONSERVATION
AND RECLAMATION DISTRICT
TRACT 5-2-31
VOLUME 178, PAGE 604
D.R.P.P.C.T.



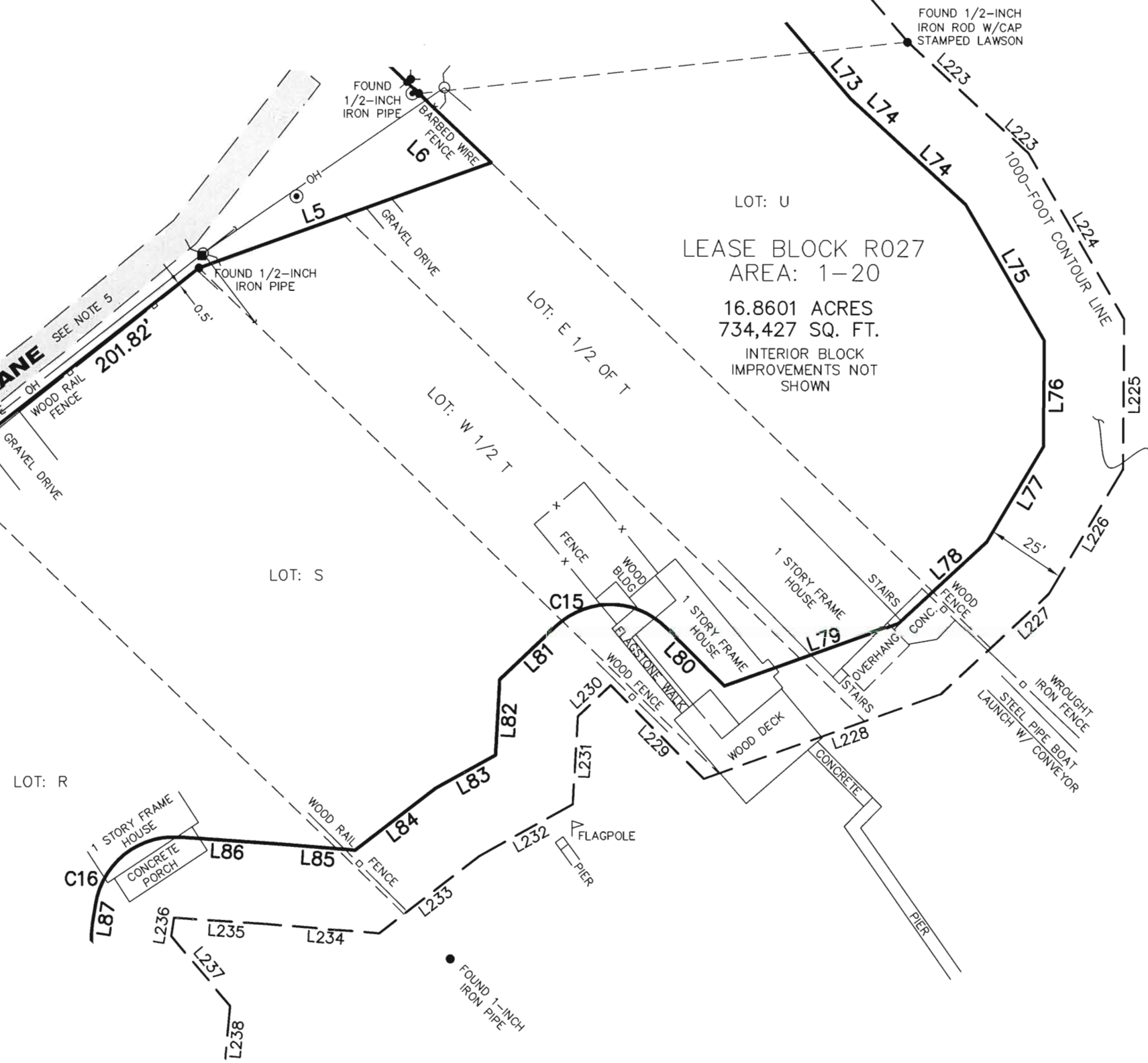
LOT: U
LEASE BLOCK R027
AREA: 1-20
16.8601 ACRES
734,427 SQ. FT.
INTERIOR BLOCK
IMPROVEMENTS NOT
SHOWN

F.E.R.C. BUFFER AREA
2.8951 ACRES
126,109 SQ. FT.

POSSUM KINGDOM LAKE
THE BRAZOS RIVER CONSERVATION
AND RECLAMATION DISTRICT
TRACT 5-2-31
VOLUME 178, PAGE 604
D.R.P.P.C.T.

STANDARD LAND SURVEY
OF
19.7552 ACRES
SITUATED IN TRACT 5-2-31
AREA 1-20, LOTS A - W
AND LOTS 11-A - 15-A-2
POSSUM KINGDOM LAKE
FRAYHAN DE LA GARZA SURVEY,
ABSTRACT 196
PALO PINTO COUNTY, TEXAS

- LEGEND**
- = LEASE CORNER MARKER "AS NOTED"
 - = TELEPHONE BOX
 - ⊙ = WATER METER
 - ⊛ = LIGHT
 - ⊙ = WATER VALVE
 - ▽ = FLAG POLE
 - ⊙ = FIRE HYDRANT
 - OH = OVERHEAD LINES
 - ⊙ = POWER POLE

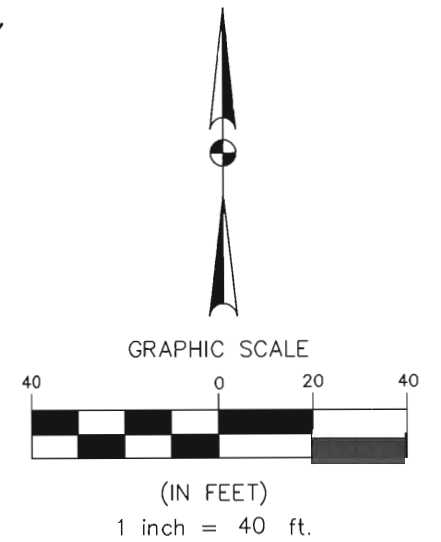


AECOM	AECOM USA GROUP, INC. 1200 SUMMIT AVENUE, SUITE 600 FORT WORTH, TEXAS 76102 WWW.AECOM.COM 817.698.6770	
	Date: 12/10/09	Project No. 60052528.103

NO PART OR PARTS OF THIS DRAWING MAY BE REPRODUCED OR RETRANSMITTED IN ANY WAY OR FORM (ELECTRONIC, MECHANICAL, PHOTOCOPYING, OR OTHERWISE) WITHOUT THE EXPRESS WRITTEN PERMISSION OF AECOM.

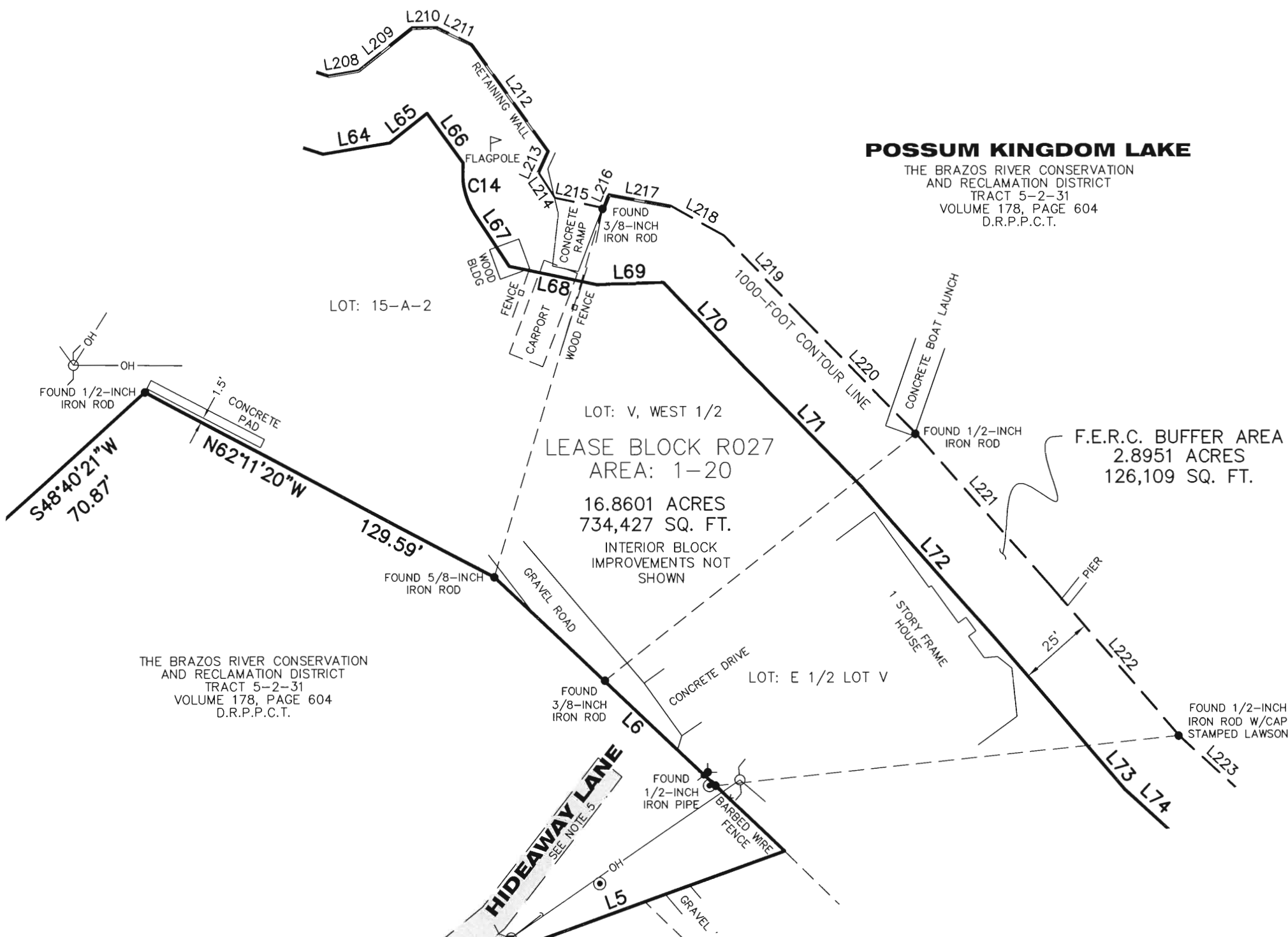
S:\Survcom\Projects\60052528\3.0 Ref Docs\Drafting\Blocks\R027\60052528 R027By.dwg 2/26/2010 11:02:00 AM CST

FRAYHAN DE LA GARZA SURVEY
ABSTRACT 196



POSSUM KINGDOM LAKE

THE BRAZOS RIVER CONSERVATION
AND RECLAMATION DISTRICT
TRACT 5-2-31
VOLUME 178, PAGE 604
D.R.P.P.C.T.



LEGEND

- = LEASE CORNER MARKER "AS NOTED"
- = TELEPHONE BOX
- ⊙ = WATER METER
- ⊛ = LIGHT
- ⊙ = WATER VALVE
- ⊙ = FLAG POLE
- ⊙ = FIRE HYDRANT
- OH = OVERHEAD LINES
- = POWER POLE

STANDARD LAND SURVEY
OF
19.7552 ACRES
SITUATED IN TRACT 5-2-31
AREA 1-20, LOTS A - W
AND LOTS 11-A - 15-A-2
POSSUM KINGDOM LAKE
FRAYHAN DE LA GARZA SURVEY,
ABSTRACT 196
PALO PINTO COUNTY, TEXAS

THE BRAZOS RIVER CONSERVATION
AND RECLAMATION DISTRICT
TRACT 5-2-31
VOLUME 178, PAGE 604
D.R.P.P.C.T.

LEASE BLOCK R027
AREA: 1-20
16.8601 ACRES
734,427 SQ. FT.
INTERIOR BLOCK
IMPROVEMENTS NOT
SHOWN

F.E.R.C. BUFFER AREA
2.8951 ACRES
126,109 SQ. FT.

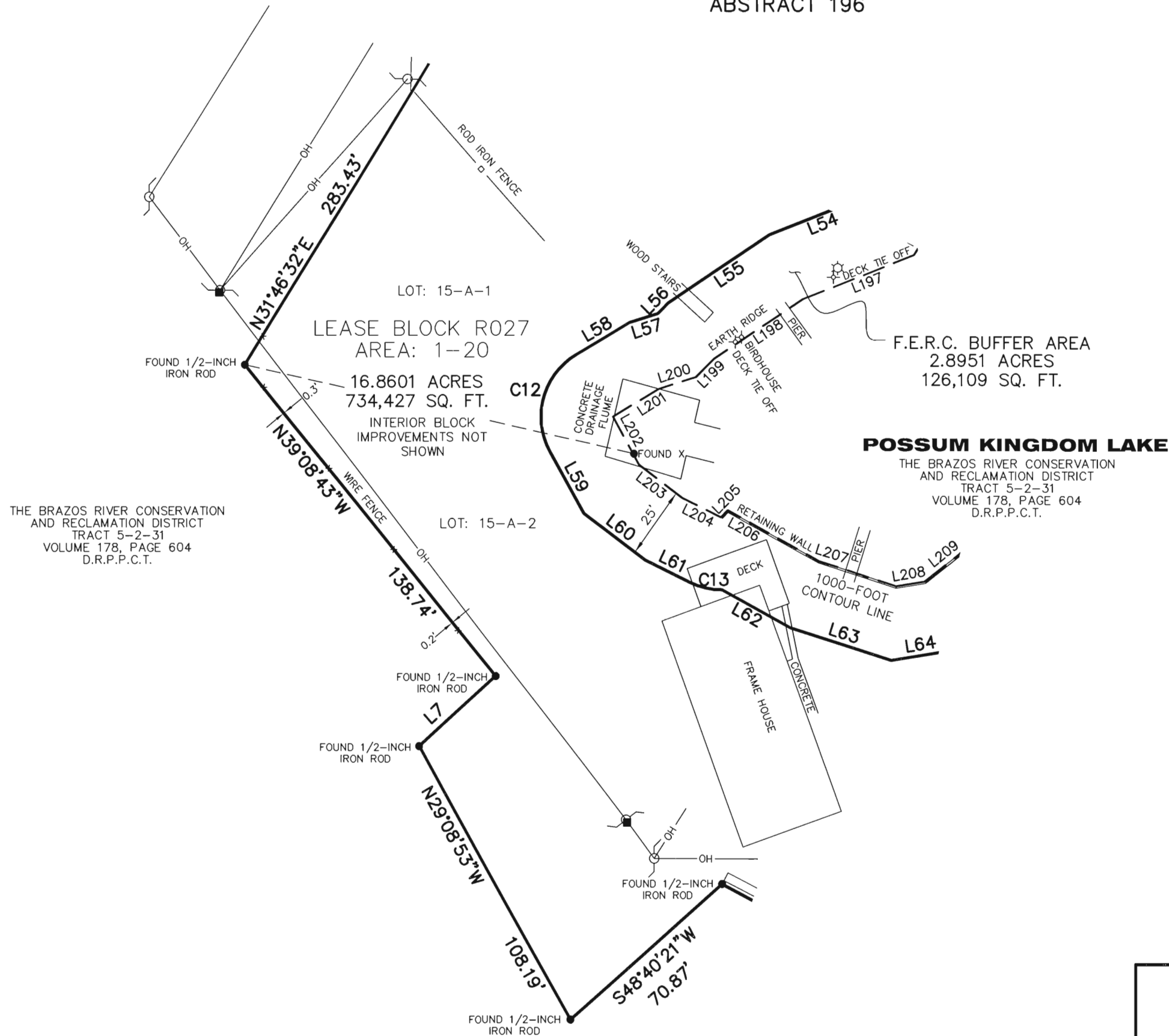
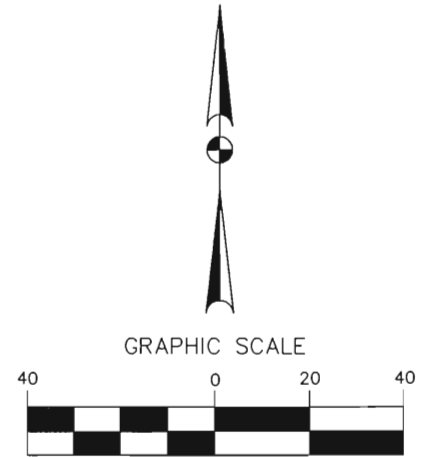
AECOM

AECOM USA GROUP, INC.
1200 SUMMIT AVENUE, SUITE 600
FORT WORTH, TEXAS 76102
WWW.AECOM.COM
817.698.6770

NO PART OR PARTS OF THIS DRAWING MAY BE REPRODUCED OR TRANSMITTED IN ANY WAY OR FORM (ELECTRONIC, MECHANICAL, PHOTOCOPYING, OR OTHERWISE) WITHOUT THE EXPRESS WRITTEN PERMISSION OF AECOM.

S:\Survey\Projects\60052528\3.0 Ref Docs\Drafting\Blocks\R027By.dwg 2/26/2010 11:02:00 AM CST

FRAYHAN DE LA GARZA SURVEY
ABSTRACT 196

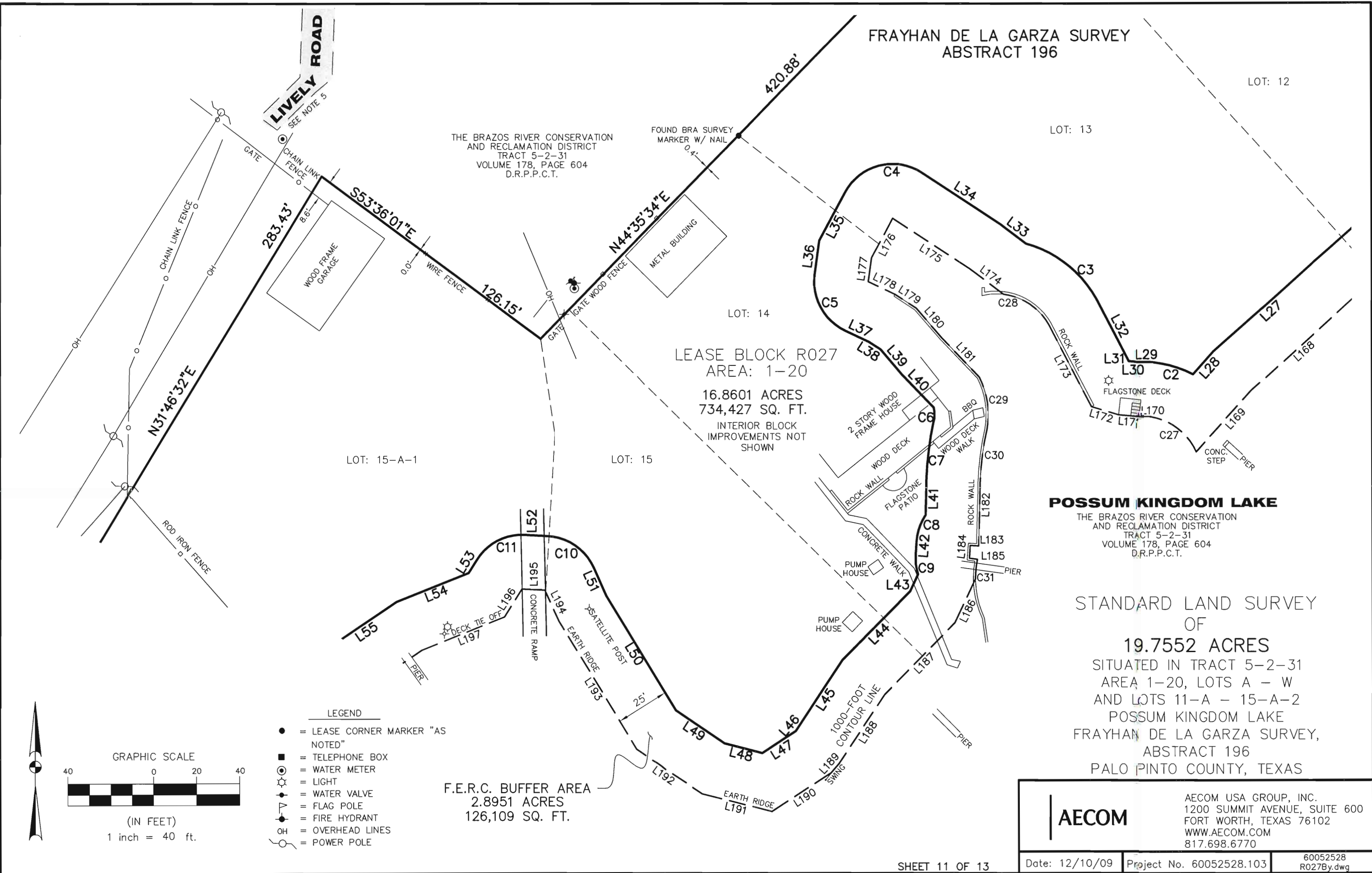


- LEGEND
- = LEASE CORNER MARKER "AS NOTED"
 - = TELEPHONE BOX
 - ⊙ = WATER METER
 - ⊛ = LIGHT
 - ⊕ = WATER VALVE
 - ⊖ = FLAG POLE
 - ⊙ = FIRE HYDRANT
 - OH = OVERHEAD LINES
 - ⊕ = POWER POLE

STANDARD LAND SURVEY
OF
19.7552 ACRES
SITUATED IN TRACT 5-2-31
AREA 1-20, LOTS A - W
AND LOTS 11-A - 15-A-2
POSSUM KINGDOM LAKE
FRAYHAN DE LA GARZA SURVEY,
ABSTRACT 196
PALO PINTO COUNTY, TEXAS

AECOM

AECOM USA GROUP, INC.
1200 SUMMIT AVENUE, SUITE 600
FORT WORTH, TEXAS 76102
WWW.AECOM.COM
817.698.6770



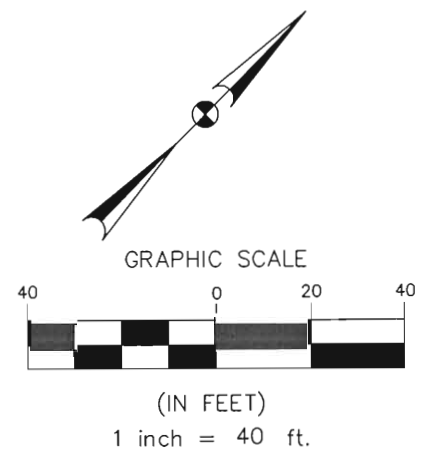
AECOM	AECOM USA GROUP, INC. 1200 SUMMIT AVENUE, SUITE 600 FORT WORTH, TEXAS 76102 WWW.AECOM.COM 817.698.6770	
	Date: 12/10/09	Project No. 60052528.103

NO PART OR PARTS OF THIS DRAWING MAY BE REPRODUCED OR TRANSMITTED IN ANY WAY OR FORM (ELECTRONIC, MECHANICAL, PHOTOCOPYING, OR OTHERWISE) WITHOUT THE EXPRESS WRITTEN PERMISSION OF AECOM.

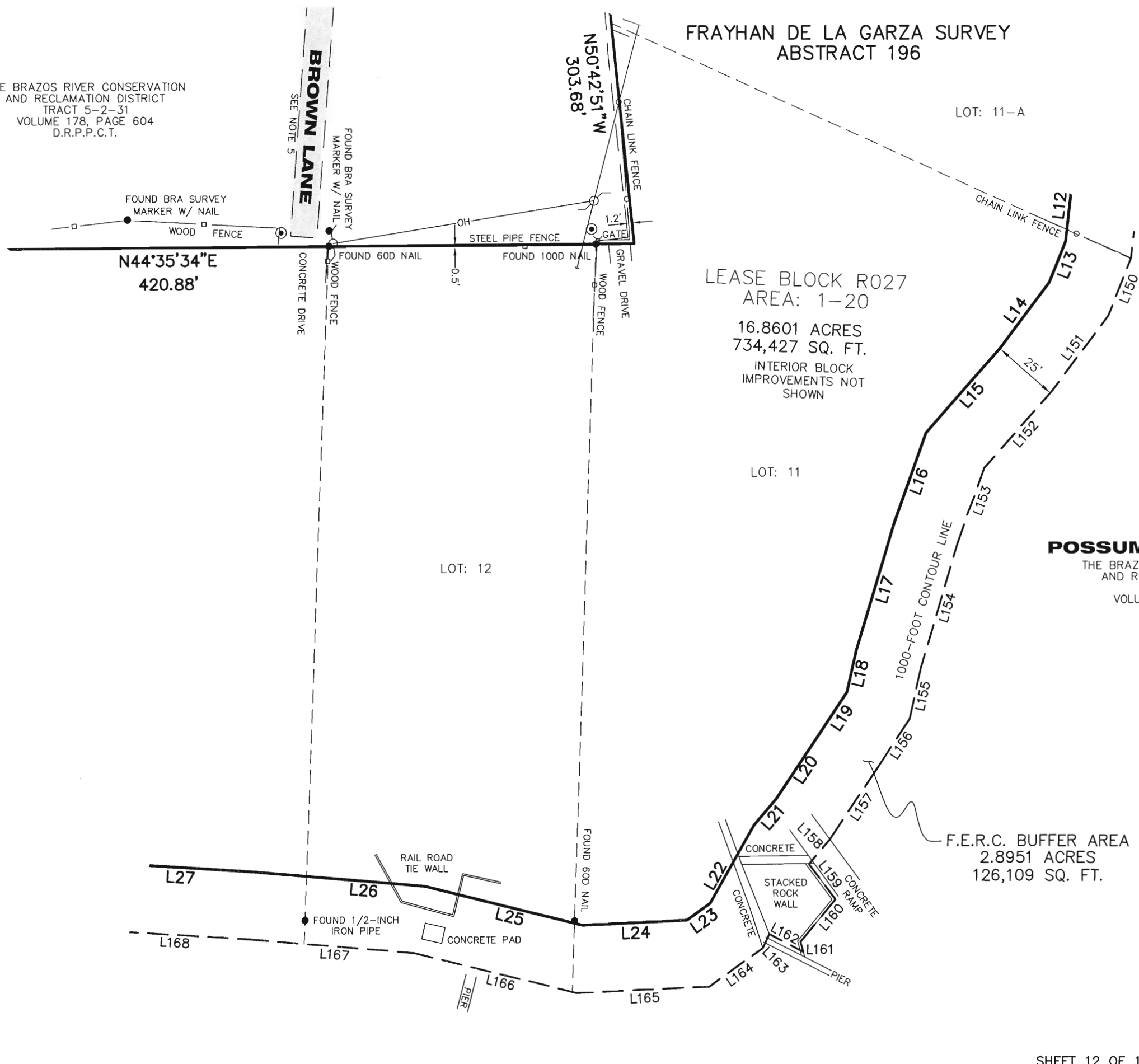
S:\Survey\Projects\60052528\3.0 Ref Docs\Drafting\Blocks\R027\60052528 R027By.dwg 2/26/2010 11:02:00 AM CST

THE BRAZOS RIVER CONSERVATION
AND RECLAMATION DISTRICT
TRACT 5-2-31
VOLUME 178, PAGE 604
D.R.P.P.C.T.

FRAYHAN DE LA GARZA SURVEY
ABSTRACT 196



- LEGEND**
- = LEASE CORNER MARKER "AS NOTED"
 - = TELEPHONE BOX
 - ⊙ = WATER METER
 - ⊛ = LIGHT
 - ⊙ = WATER VALVE
 - ⚑ = FLAG POLE
 - ⊙ = FIRE HYDRANT
 - OH = OVERHEAD LINES
 - ⊙ = POWER POLE



LEASE BLOCK R027
AREA: 1-20
16.8601 ACRES
734,427 SQ. FT.
INTERIOR BLOCK
IMPROVEMENTS NOT
SHOWN

POSSUM KINGDOM LAKE
THE BRAZOS RIVER CONSERVATION
AND RECLAMATION DISTRICT
TRACT 5-2-31
VOLUME 178, PAGE 604
D.R.P.P.C.T.

STANDARD LAND SURVEY
OF
19.7552 ACRES
SITUATED IN TRACT 5-2-31
AREA 1-20, LOTS A - W
AND LOTS 11-A - 15-A-2
POSSUM KINGDOM LAKE
FRAYHAN DE LA GARZA SURVEY,
ABSTRACT 196
PALO PINTO COUNTY, TEXAS

AECOM	AECOM USA GROUP, INC. 1200 SUMMIT AVENUE, SUITE 600 FORT WORTH, TEXAS 76102 WWW.AECOM.COM 817.698.6770	
	Date: 12/10/09	Project No. 60052528.103

NO PART OR PARTS OF THIS DRAWING MAY BE REPRODUCED OR RETRANSMITTED IN ANY WAY OR FORM (ELECTRONIC, MECHANICAL, PHOTOCOPYING, OR OTHERWISE) WITHOUT THE EXPRESS WRITTEN PERMISSION OF AECOM.

S:\Survey\Projects\60052528\3.0 Ref Docs\Drafting\Blocks\R027\60052528 R027By.dwg 2/26/2010 11:02:00 AM CST

