

VICINITY MAP
NOT TO SCALE

LINE	BEARING	DISTANCE
L1	N16°30'57"E	16.17'
L2	N24°12'56"E	27.53'
L3	N00°59'24"E	50.79'
L4	N12°09'07"E	19.15'
L5	N05°46'12"E	29.46'
L6	N47°23'57"E	6.27'
L7	N61°38'01"E	20.09'
L8	N51°06'53"E	77.58'
L9	N55°36'05"E	20.26'
L10	S62°44'26"E	11.99'
L11	S83°52'11"E	15.79'
L12	N48°09'40"E	64.32'
L13	N23°12'16"E	57.64'
L14	N75°15'50"E	45.38'
L15	N47°49'36"E	36.89'
L16	N73°09'22"E	61.30'
L17	N19°21'05"E	62.81'
L18	N44°18'54"E	21.21'
L19	S78°24'08"E	40.45'
L20	N20°25'50"E	81.66'

LINE	BEARING	DISTANCE
L21	N09°23'02"W	52.70'
L22	N22°59'19"E	43.44'
L23	N41°44'55"W	24.17'
L24	N26°06'45"W	48.80'
L25	N36°08'38"E	20.15'
L26	N36°20'44"E	47.93'
L27	N10°00'23"E	65.63'
L28	N38°41'27"E	19.89'
L29	N48°42'03"E	29.47'
L30	N15°21'57"E	40.99'
L31	N34°10'22"E	33.87'
L32	N24°28'01"E	37.75'
L33	N07°44'10"W	36.01'
L34	N21°58'23"W	43.51'
L35	N18°53'58"W	19.50'
L36	N24°05'47"W	22.80'
L37	N13°06'36"W	14.29'
L38	N20°33'33"W	17.31'
L39	N05°19'22"E	17.05'
L40	N19°15'46"E	47.98'
L41	N02°13'00"W	19.28'
L42	N18°21'39"E	0.97'
L43	N39°58'10"E	14.59'
L44	N28°04'00"E	9.37'
L45	N46°12'03"E	4.15'
L46	N40°04'24"E	9.90'
L47	N43°10'46"E	35.12'
L48	N55°58'48"E	32.51'
L49	N74°49'41"E	38.88'
L50	N64°40'07"E	33.85'
L51	N55°06'44"E	37.62'
L52	N29°42'19"E	42.22'
L53	N06°40'37"W	37.10'
L54	N07°39'32"E	19.65'
L55	N27°17'06"E	43.27'

LINE	BEARING	DISTANCE
L56	N17°17'58"E	27.95'
L57	N08°41'45"E	52.31'
L58	N20°47'31"W	32.61'
L59	N23°34'12"E	19.75'
L60	N48°17'15"E	19.94'
L61	N19°36'33"E	5.91'
L62	N66°50'54"E	18.96'
L63	N42°13'52"E	25.15'
L64	N23°26'43"E	31.68'
L65	N02°48'34"W	31.69'
L66	N39°51'31"W	20.05'
L67	N42°41'34"W	1.67'
L68	N08°15'17"W	21.88'
L69	N59°01'28"W	2.80'
L70	N05°31'11"E	7.49'
L71	N24°52'55"W	16.07'
L72	N01°25'20"E	16.33'
L73	N26°19'25"W	9.90'
L74	N25°42'24"E	14.86'
L75	N18°26'06"W	16.09'
L76	N29°39'32"E	17.72'
L77	N33°40'03"E	19.71'
L78	S79°43'13"E	13.36'
L79	N67°33'35"E	19.94'
L80	N86°25'32"E	21.39'
L81	N44°41'11"E	17.51'
L82	N77°37'04"E	13.87'
L83	N55°51'29"E	27.23'
L84	N47°24'19"E	15.21'
L85	N16°48'41"E	16.83'
L86	N00°09'04"W	8.42'
L87	N16°27'46"E	58.07'
L88	N84°09'35"E	5.36'
L89	S54°24'22"E	2.24'
L90	S52°06'45"E	14.61'

LINE	BEARING	DISTANCE
L91	S76°29'20"E	30.20'
L92	N26°28'01"E	38.16'
L93	N05°16'57"E	29.79'
L94	S51°26'41"W	31.90'
L95	N31°37'13"W	1.63'
L96	N10°50'45"W	9.03'
L97	N10°23'54"E	12.85'
L98	N16°30'57"E	22.12'
L99	N24°12'56"E	24.08'
L100	N00°59'24"E	48.09'
L101	N12°09'07"E	20.20'
L102	N05°46'12"E	27.28'
L103	N47°23'57"E	9.61'
L104	N53°47'35"E	19.93'
L105	S51°36'01"E	2.96'
L106	N51°06'53"E	76.25'
L107	N55°36'05"E	23.82'
L108	S62°44'26"E	12.58'
L109	N48°09'40"E	47.66'
L110	N23°12'16"E	64.31'
L111	N75°15'50"E	51.49'
L112	N47°49'36"E	36.41'
L113	N73°09'22"E	54.23'
L114	N19°21'05"E	55.66'
L115	N44°18'54"E	40.40'
L116	S78°24'08"E	32.69'
L117	N20°25'50"E	53.59'
L118	N09°23'02"W	53.30'
L119	N22°59'19"E	34.85'
L120	N41°44'55"W	11.76'
L121	N26°06'45"W	67.33'
L122	N36°08'38"E	35.29'
L123	N36°20'44"E	42.12'
L124	N10°00'23"E	66.17'
L125	N38°41'27"E	28.47'

LINE	BEARING	DISTANCE
L126	N48°42'03"E	24.18'
L127	N15°21'57"E	37.65'
L128	N34°10'22"E	35.88'
L129	N24°28'01"E	28.41'
L130	N07°44'10"W	25.67'
L131	N21°58'23"W	41.06'
L132	N18°53'58"W	19.04'
L133	N24°05'47"W	24.07'
L134	N13°06'36"W	15.06'
L135	N20°33'33"W	21.42'
L136	N05°19'22"E	25.85'
L137	N19°15'46"E	46.30'
L138	N02°13'00"W	14.32'
L139	N40°04'24"E	24.48'
L140	S54°37'29"E	5.62'
L141	N43°10'46"E	37.92'
L142	N55°58'48"E	39.46'
L143	N74°49'41"E	40.81'
L144	N64°40'07"E	29.54'
L145	N55°06'44"E	29.89'
L146	N29°42'19"E	28.37'
L147	N06°40'37"W	32.03'
L148	N07°39'32"E	27.12'
L149	N27°17'06"E	45.41'
L150	N17°17'58"E	23.89'
L151	N08°41'45"E	43.85'
L152	N20°47'31"W	32.93'
L153	N15°58'23"E	2.27'
L154	N23°34'12"E	23.64'
L155	N66°03'27"E	17.45'
L156	N48°17'15"E	13.44'
L157	N19°36'33"E	10.45'
L158	N66°50'54"E	24.43'
L159	N42°13'52"E	15.56'
L160	N23°26'43"E	21.72'

LINE	BEARING	DISTANCE
L161	N02°48'34"W	17.49'
L162	N39°51'31"W	11.05'
L163	N42°41'34"W	8.80'
L164	N08°15'17"W	17.77'
L165	N59°01'28"W	6.73'
L166	N05°31'11"E	16.49'
L167	N24°52'55"W	15.12'
L168	N01°25'20"E	15.99'
L169	N26°19'25"W	15.92'
L170	N25°42'24"E	16.92'
L171	N18°26'06"W	16.18'
L172	N26°03'34"E	16.17'
L173	N08°49'22"W	15.89'
L174	N72°56'50"E	15.89'
L175	N33°40'03"E	16.17'
L176	N57°34'19"E	14.95'
L177	S79°43'13"E	15.85'
L178	N67°33'35"E	16.76'
L179	N86°25'32"E	16.01'
L180	N44°41'11"E	15.37'
L181	N77°37'04"E	16.45'
L182	N55°51'29"E	20.58'
L183	N47°24'19"E	6.52'
L184	N16°48'41"E	6.26'
L185	N00°09'04"W	8.34'
L186	N16°27'46"E	65.49'
L187	N84°09'35"E	16.74'
L188	S54°24'22"E	12.20'
L189	S52°06'45"E	9.71'
L190	S76°29'20"E	4.90'
L191	N26°28'01"E	13.58'
L192	N05°16'57"E	37.23'
L193	S58°51'33"E	27.78'
L194	S57°48'21"W	58.23'
L195	S59°38'41"W	56.91'

LINE	BEARING	DISTANCE
L196	S43°27'01"W	65.68'
L197	S41°43'08"W	73.79'
L198	S16°25'45"W	2.87'

SURVEYORS CERTIFICATE

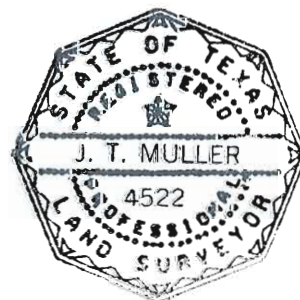
TO: BRAZOS RIVER AUTHORITY, PATTERSON PK LAND PARTNERSHIP, LTD., AND HERITAGE TITLE COMPANY OF AUSTIN, INC.

I, JAMES T. MULLER, A REGISTERED PROFESSIONAL LAND SURVEYOR IN THE STATE OF TEXAS, REGISTRATION NUMBER 4522, HEREBY STATE THAT A SURVEY OF THE REAL PROPERTY DESCRIBED IN SEPARATE LEGAL DESCRIPTION AS NOTED HEREON, WAS ACTUALLY MADE UPON THE GROUND UNDER MY DIRECTION AND SUPERVISION, AND THAT TO THE BEST OF MY PROFESSIONAL KNOWLEDGE AND BELIEF, THE INFORMATION SHOWN HEREON IS CORRECT AS DETERMINED BY SAID SURVEY.

THIS SURVEY SUBSTANTIALLY COMPLIES WITH THE CURRENT TEXAS SOCIETY OF PROFESSIONAL SURVEYORS STANDARDS AND SPECIFICATIONS FOR A CATEGORY 1B, CONDITION II SURVEY.

JAMES T. MULLER
REGISTERED PROFESSIONAL LAND SURVEYOR
TEXAS REGISTRATION NO. 4522

DATE: MAY 21, 2010



NOTES:

- 1) BEARINGS AND COORDINATES SHOWN HEREON ARE BASED ON THE NORTH AMERICAN DATUM OF 1983, TEXAS COORDINATE SYSTEM, NORTH CENTRAL ZONE (4202).
- 2) 1,000-FOOT CONTOUR ELEVATION OF POSSUM KINGDOM LAKE IS DETERMINED BASED ON MEASUREMENTS FROM THE TOP OF THE EXISTING SPILLWAY CREST GATES AT THE MORRIS SHEPPARD DAM BEING AT ELEVATION 1,000- FEET ABOVE MEAN SEA LEVEL AS NOTED IN FEDERAL POWER COMMISSION REPORT PROJECT NO. 1490 - TEXAS ON JUNE 2, 1938.
- 3) SET = 5/8" IRON ROD W/CAP STAMPED "AECOM" SET; D.R.P.P.C.T.= DEED RECORDS, PALO PINTO COUNTY, TEXAS; P.R.P.P.C.T.= PLAT RECORDS, PALO PINTO COUNTY, TEXAS; F.E.R.C.= FEDERAL ENERGY REGULATORY COMMISSION; J.R.P.P.C.T.= JUDGEMENT RECORDS, PALO PINTO COUNTY, TEXAS; LFS = 5/8" IRON ROD W/CAP STAMPED "LINKFIELD RPLS 5087" FOUND.
- 4) METES AND BOUNDS DESCRIPTIONS TO ACCOMPANY THIS SURVEY.
- 5) LOCATION, POSITION AND GEOMETRY OF ROAD RIGHTS-OF-WAY SHOWN AND DESCRIBED HEREON BASED ON SURVEYS PROVIDED BY LINK FIELD SERVICES, NO DEED OF RECORD HAS BEEN RECORDED AT THIS TIME FOR SAME UNLESS NOTED OTHERWISE.
- 6) IMPROVEMENTS SHOWN HEREON TIED FEBRUARY 2010.

ACREAGE TABLE
LEASE BLOCK: 10.9272 ACRES
F.E.R.C. BUFFER AREA: 1.7375 ACRES
SURVEY BLOCK: 12.6647 ACRES TOTAL

STANDARD LAND SURVEY
OF
12.6647 ACRES
SITUATED IN TRACT 5-2-31
AREA 1-16, LOTS 7 TO 24
POSSUM KINGDOM LAKE
FRAYHAN DE LA GARZA SURVEY,
ABSTRACT 196
PALO PINTO COUNTY, TEXAS

AECOM

AECOM USA GROUP, INC.
1200 SUMMIT AVENUE, SUITE 600
FORT WORTH, TEXAS 76102
WWW.AECOM.COM
817.698.6770

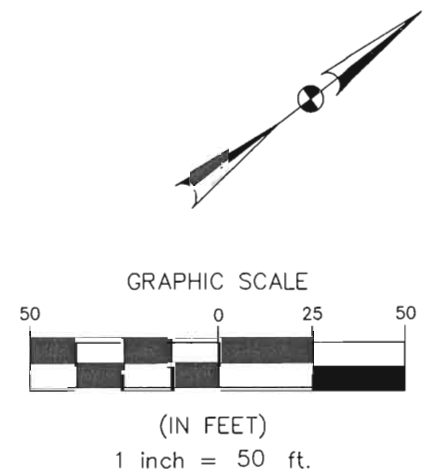
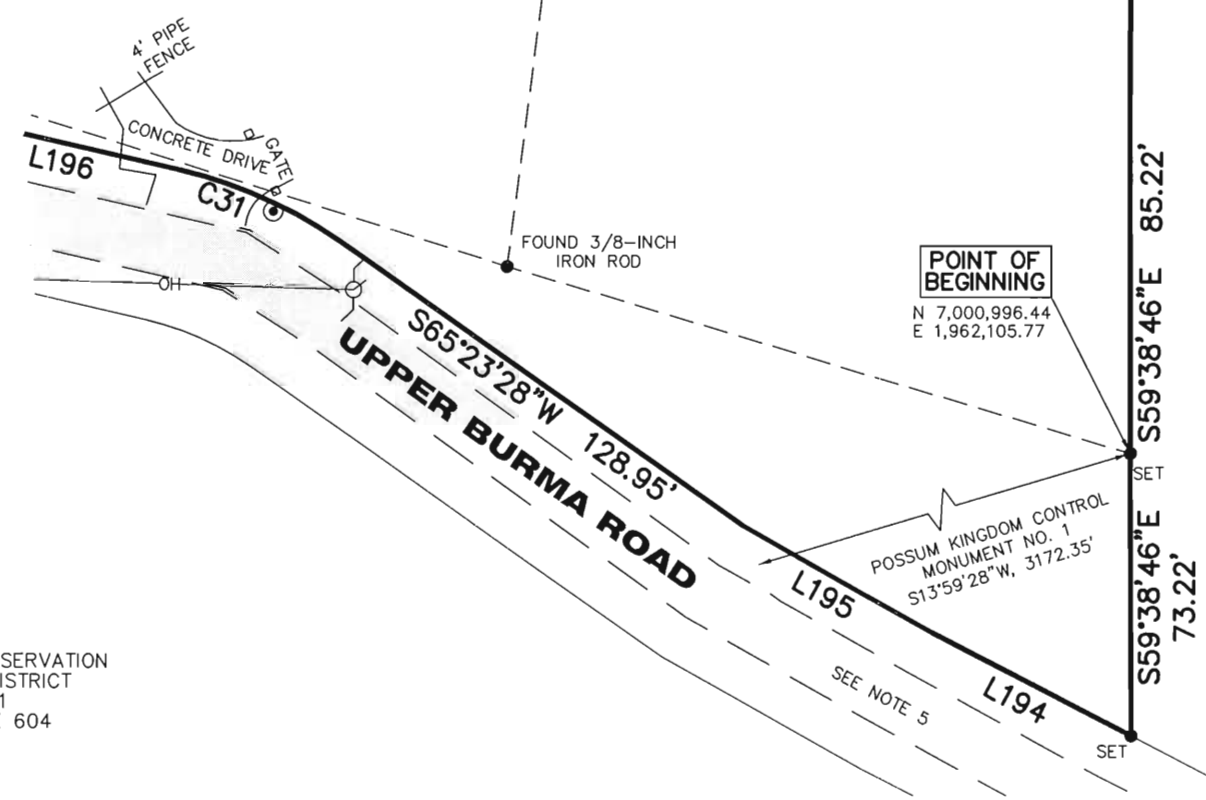
FRAYHAN DE LA GARZA SURVEY
ABSTRACT 196

POSSUM KINGDOM LAKE

THE BRAZOS RIVER CONSERVATION
AND RECLAMATION DISTRICT
TRACT 5-2-31
VOLUME 178, PAGE 604
D.R.P.P.C.T.

LEASE BLOCK R023
AREA: 1-16

CURVE TABLE					
CURVE	LENGTH	DELTA	RADIUS	CHORD BEARING	CHORD
C1	81.48'	44°21'33"	105.25'	N24°09'56"E	79.46'
C2	45.50'	47°27'54"	54.93'	N30°19'48"E	44.21'
C3	15.90'	04°57'54"	183.45'	N04°06'54"E	15.89'
C4	29.65'	05°52'05"	289.51'	N01°18'05"W	29.64'
C5	6.33'	49°29'33"	7.32'	N20°30'39"E	6.13'
C6	15.71'	36°00'03"	25.00'	N61°10'48"E	15.45'
C7	37.28'	28°44'22"	74.32'	N09°04'25"W	36.89'
C8	47.39'	48°48'29"	55.63'	N42°09'54"W	45.97'
C9	34.13'	51°54'59"	37.67'	N56°02'45"E	32.98'
C10	67.99'	101°49'56"	38.26'	N59°56'35"E	59.39'
C11	4.52'	07°10'57"	36.08'	N05°26'09"E	4.52'
C12	22.92'	15°35'46"	84.19'	N42°37'18"E	22.85'
C13	100.21'	44°04'59"	130.25'	S24°24'37"W	97.76'
C14	19.65'	53°21'35"	21.10'	S82°16'53"W	18.95'
C15	3.09'	49°28'18"	3.58'	N15°28'23"W	3.00'
C16	29.17'	43°13'01"	38.68'	N30°52'17"E	28.49'
C17	10.78'	14°57'12"	41.32'	N28°04'00"E	10.75'
C18	10.18'	21°18'55"	27.37'	N46°12'03"E	10.12'
C19	26.25'	50°15'39"	29.93'	N31°43'41"E	25.42'
C20	13.73'	04°57'54"	158.45'	N04°06'54"E	13.73'
C21	27.09'	05°52'05"	264.51'	N01°18'05"W	27.08'
C22	26.39'	46°46'32"	32.32'	N19°09'08"E	25.66'
C23	28.60'	33°13'28"	49.32'	N08°20'28"W	28.20'
C24	29.97'	56°03'20"	30.63'	N43°34'28"W	28.79'
C25	36.93'	107°51'11"	19.62'	N21°18'03"W	31.71'
C26	67.28'	61°30'21"	62.67'	N59°22'31"E	64.09'
C27	27.63'	119°24'54"	13.26'	N68°44'04"E	22.89'
C28	15.52'	80°17'03"	11.08'	N31°06'54"W	14.29'
C29	35.74'	18°45'09"	109.19'	N41°56'44"E	35.58'
C30	11.16'	31°10'44"	20.50'	N66°54'41"E	11.02'
C31	45.95'	21°56'27"	120.00'	S54°25'14"W	45.67'



- LEGEND
- = LEASE CORNER MARKER "AS NOTED"
 - OH = OVERHEAD LINES
 - ⊙ = WATER METER
 - ⚑ = FLAG POLE
 - = TELEPHONE PEDESTAL
 - ⊕ = POWER POLE
 - ⊙ = WATER VALVE
 - ⊕ = IRRIGATION CONTROL VALVE
 - ⊕ = FIRE HYDRANT
 - ⊕ = POST
 - = ELECTRIC PEDESTAL

THE BRAZOS RIVER CONSERVATION
AND RECLAMATION DISTRICT
TRACT 5-2-31
VOLUME 178, PAGE 604
D.R.P.P.C.T.

LOT: 7
LEASE BLOCK R024
AREA: 1-16
10.9272 ACRES
475,991 SQ. FT.
INTERIOR BLOCK
IMPROVEMENTS NOT
SHOWN

STANDARD LAND SURVEY
OF
12.6647 ACRES
SITUATED IN TRACT 5-2-31
AREA 1-16, LOTS 7 TO 24
POSSUM KINGDOM LAKE
FRAYHAN DE LA GARZA SURVEY,
ABSTRACT 196
PALO PINTO COUNTY, TEXAS

THE BRAZOS RIVER CONSERVATION
AND RECLAMATION DISTRICT
TRACT 5-2-31
VOLUME 178, PAGE 604
D.R.P.P.C.T.

AECOM	AECOM USA GROUP, INC. 1200 SUMMIT AVENUE, SUITE 600 FORT WORTH, TEXAS 76102 WWW.AECOM.COM 817.698.6770	
	Date: 11/19/09	Project No. 60102581.02

REVISED: 05/21/10 SHEET 2 OF 6

NO PART OR PARTS OF THIS DRAWING MAY BE REPRODUCED OR RETRANSMITTED IN ANY WAY OR FORM (ELECTRONIC, MECHANICAL, PHOTOCOPYING, OR OTHERWISE) WITHOUT THE EXPRESS WRITTEN PERMISSION OF AECOM.

S:\Survcon\Projects\60102581\3.0 Ref Docs\Drafting\Undeveloped Strips\Blocks\R024\60052528 R024ByR1.dwg 5/18/2010 6:10:53 AM CDT

FRAYHAN DE LA GARZA SURVEY
ABSTRACT 196

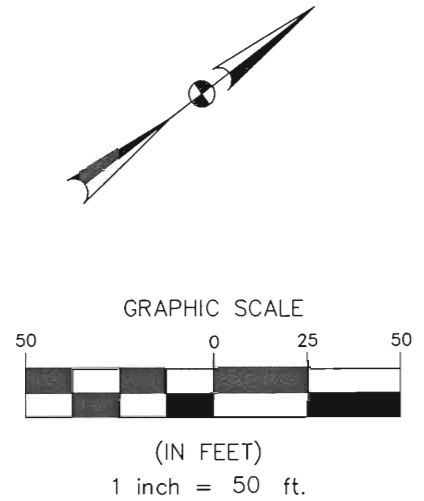
POSSUM KINGDOM LAKE

THE BRAZOS RIVER CONSERVATION
AND RECLAMATION DISTRICT
TRACT 5-2-31
VOLUME 178, PAGE 604
D.R.P.P.C.T.

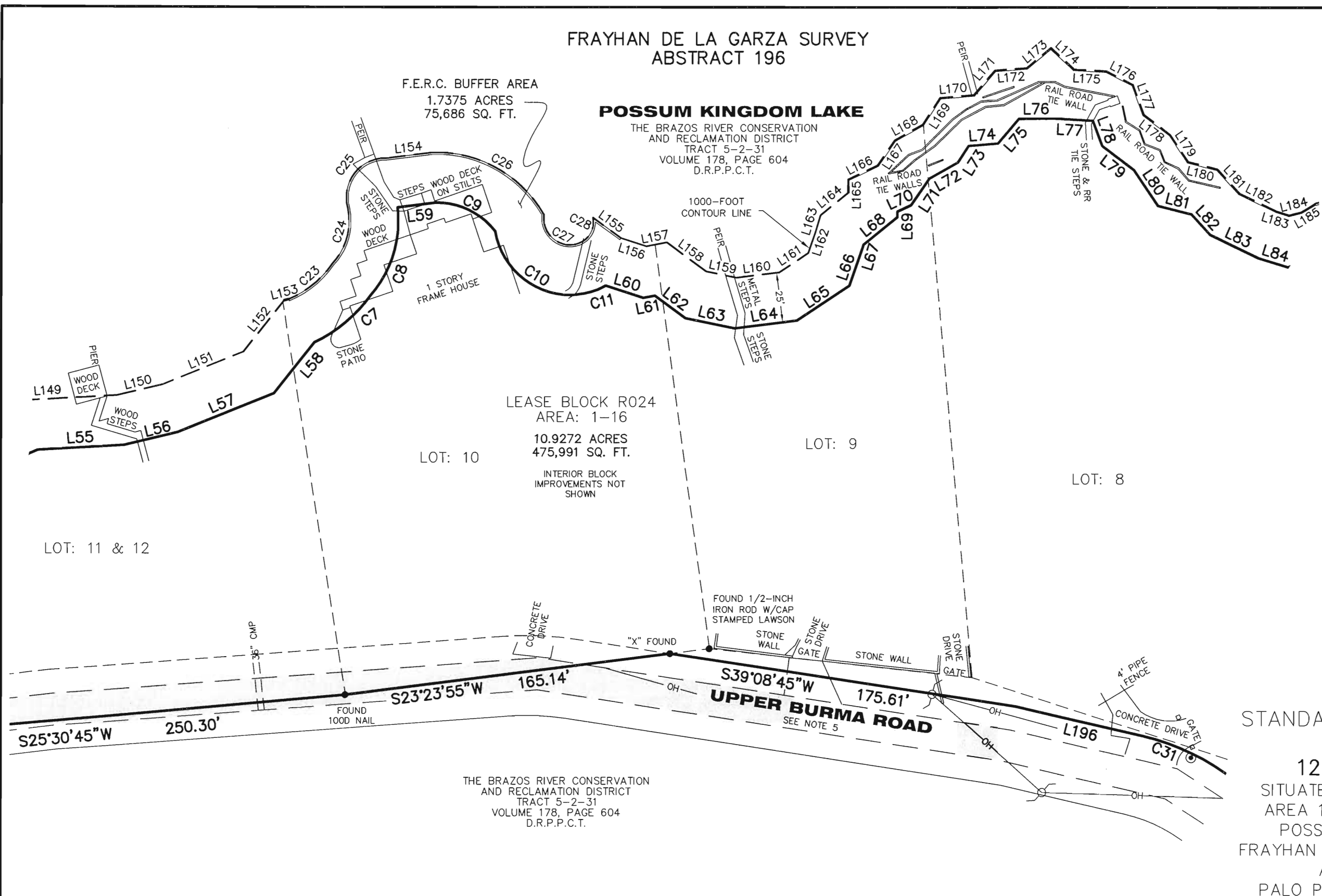
F.E.R.C. BUFFER AREA
1.7375 ACRES
75,686 SQ. FT.

LEASE BLOCK R024
AREA: 1-16
10.9272 ACRES
475,991 SQ. FT.
INTERIOR BLOCK
IMPROVEMENTS NOT
SHOWN

STANDARD LAND SURVEY
OF
12.6647 ACRES
SITUATED IN TRACT 5-2-31
AREA 1-16, LOTS 7 TO 24
POSSUM KINGDOM LAKE
FRAYHAN DE LA GARZA SURVEY,
ABSTRACT 196
PALO PINTO COUNTY, TEXAS



- LEGEND**
- = LEASE CORNER MARKER "AS NOTED"
 - OH = OVERHEAD LINES
 - ⊙ = WATER METER
 - ⌵ = FLAG POLE
 - = TELEPHONE PEDESTAL
 - ⊕ = POWER POLE
 - ⊙ = WATER VALVE
 - ⊗ = IRRIGATION CONTROL VALVE
 - ⊕ = FIRE HYDRANT
 - ⊕ = POST
 - = ELECTRIC PEDESTAL



THE BRAZOS RIVER CONSERVATION
AND RECLAMATION DISTRICT
TRACT 5-2-31
VOLUME 178, PAGE 604
D.R.P.P.C.T.

AECOM	AECOM USA GROUP, INC. 1200 SUMMIT AVENUE, SUITE 600 FORT WORTH, TEXAS 76102 WWW.AECOM.COM 817.698.6770		
	REVISED: 05/21/10 SHEET 3 OF 6	Date: 11/19/09	Project No. 60102581.02

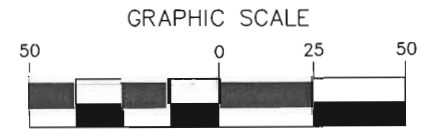
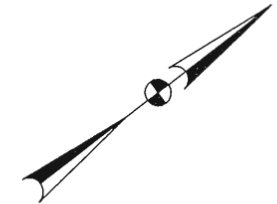
NO PART OR PARTS OF THIS DRAWING MAY BE REPRODUCED OR TRANSMITTED IN ANY WAY OR FORM (ELECTRONIC, MECHANICAL, PHOTOCOPYING, OR OTHERWISE) WITHOUT THE EXPRESS WRITTEN PERMISSION OF AECOM.

S:\Survey\Projects\60102581\3.0 Ref Docs\Drafting\Undeveloped Strips\Blocks\R024\60052528 R024ByR1.dwg 5/18/2010 6:10:53 AM CDT

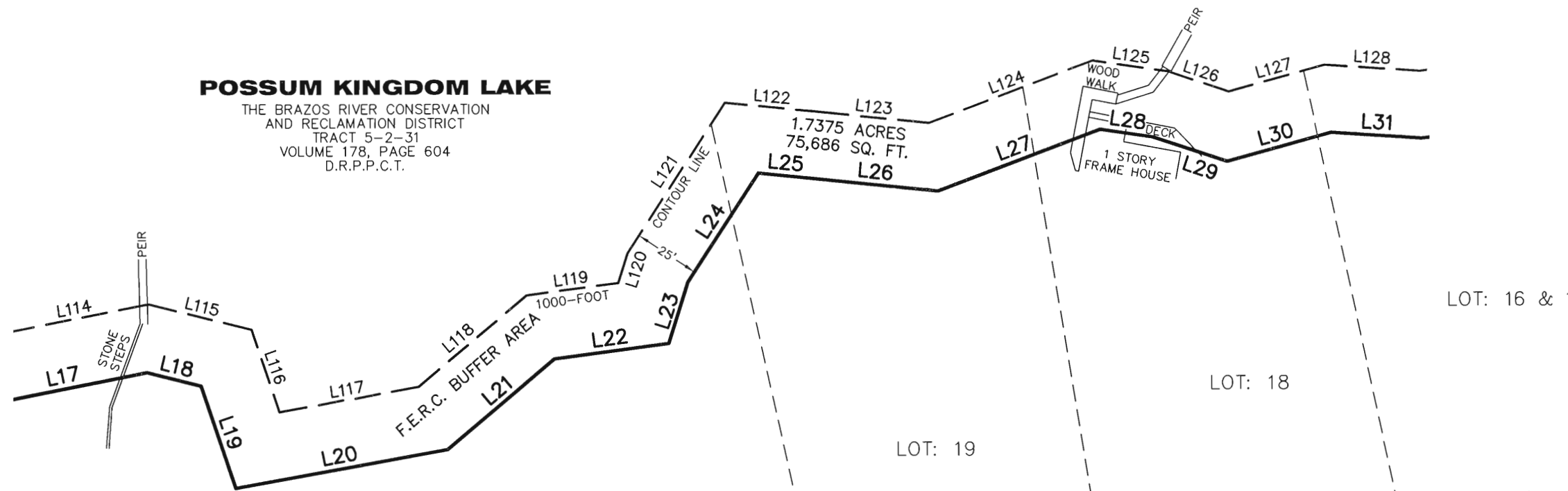
FRAYHAN DE LA GARZA SURVEY
ABSTRACT 196

POSSUM KINGDOM LAKE

THE BRAZOS RIVER CONSERVATION
AND RECLAMATION DISTRICT
TRACT 5-2-31
VOLUME 178, PAGE 604
D.R.P.P.C.T.



(IN FEET)
1 inch = 50 ft.



LOT: 16 & 17

LOT: 18

LOT: 19

LOTS: 20 & 21

LEASE BLOCK R024
AREA: 1-16

10.9272 ACRES
475,991 SQ. FT.

INTERIOR BLOCK
IMPROVEMENTS NOT
SHOWN

- LEGEND**
- = LEASE CORNER MARKER "AS NOTED"
 - OH = OVERHEAD LINES
 - ⊙ = WATER METER
 - ▽ = FLAG POLE
 - = TELEPHONE PEDESTAL
 - = POWER POLE
 - = WATER VALVE
 - ⊙ = IRRIGATION CONTROL VALVE
 - = FIRE HYDRANT
 - ⊙ = POST
 - = ELECTRIC PEDESTAL

STANDARD LAND SURVEY OF
OF
12.6647 ACRES
SITUATED IN TRACT 5-2-31
AREA 1-16, LOTS 7 TO 24
POSSUM KINGDOM LAKE
FRAYHAN DE LA GARZA SURVEY,
ABSTRACT 196
PALO PINTO COUNTY, TEXAS

THE BRAZOS RIVER CONSERVATION
AND RECLAMATION DISTRICT
TRACT 5-2-31
VOLUME 178, PAGE 604
D.R.P.P.C.T.

AECOM

AECOM USA GROUP, INC.
1200 SUMMIT AVENUE, SUITE 600
FORT WORTH, TEXAS 76102
WWW.AECOM.COM
817.698.6770

REVISED: 05/21/10 SHEET 5 OF 6

Date: 11/19/09

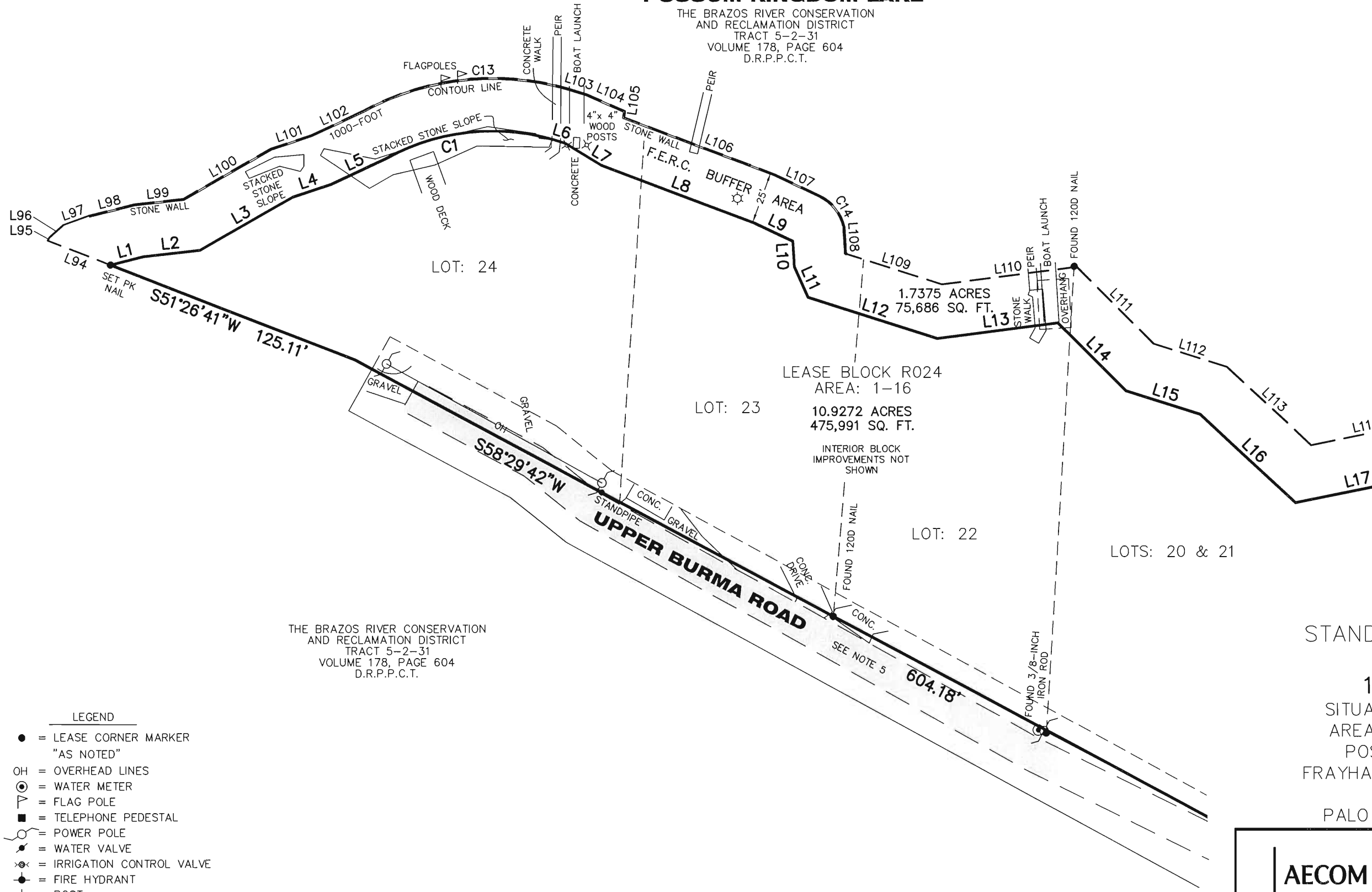
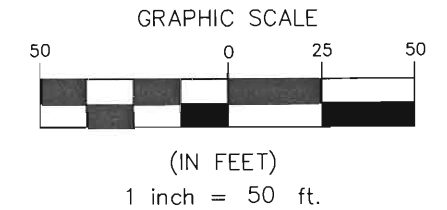
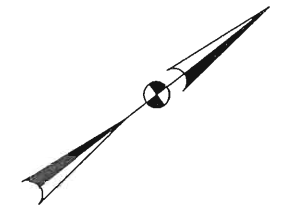
Project No. 60102581.02

60052528
R024ByR1.dwg

FRAYHAN DE LA GARZA SURVEY
ABSTRACT 196

POSSUM KINGDOM LAKE

THE BRAZOS RIVER CONSERVATION
AND RECLAMATION DISTRICT
TRACT 5-2-31
VOLUME 178, PAGE 604
D.R.P.P.C.T.



THE BRAZOS RIVER CONSERVATION
AND RECLAMATION DISTRICT
TRACT 5-2-31
VOLUME 178, PAGE 604
D.R.P.P.C.T.

STANDARD LAND SURVEY
OF
12.6647 ACRES
SITUATED IN TRACT 5-2-31
AREA 1-16, LOTS 7 TO 24
POSSUM KINGDOM LAKE
FRAYHAN DE LA GARZA SURVEY,
ABSTRACT 196
PALO PINTO COUNTY, TEXAS

- LEGEND**
- = LEASE CORNER MARKER
"AS NOTED"
 - OH = OVERHEAD LINES
 - ⊙ = WATER METER
 - ▽ = FLAG POLE
 - = TELEPHONE PEDESTAL
 - ⊕ = POWER POLE
 - ⊙ = WATER VALVE
 - ⊗ = IRRIGATION CONTROL VALVE
 - ⊙ = FIRE HYDRANT
 - ⊕ = POST
 - = ELECTRIC PEDESTAL

AECOM	AECOM USA GROUP, INC. 1200 SUMMIT AVENUE, SUITE 600 FORT WORTH, TEXAS 76102 WWW.AECOM.COM 817.698.6770	
	Date: 11/19/09	Project No. 60102581.02

NO PART OR PARTS OF THIS DRAWING MAY BE REPRODUCED OR TRANSMITTED IN ANY WAY OR FORM (ELECTRONIC, MECHANICAL, PHOTOCOPYING, OR OTHERWISE) WITHOUT THE EXPRESS WRITTEN PERMISSION OF AECOM.

S:\Survey\Projects\60102581\3.0 Ref Docs\Drafting\Undeveloped Strips\Blocks\R024\60052528 R024ByR1.dwg 5/18/2010 6:10:53 AM CDT