

VICINITY MAP
NOT TO SCALE

LINE	BEARING	DISTANCE
L1	N73°41'45"W	34.46'
L2	N65°21'55"W	6.94'
L3	N70°04'58"W	28.29'
L4	N76°10'56"W	24.60'
L5	S84°12'53"W	18.44'
L6	S88°38'59"W	25.40'
L7	N71°00'38"W	32.33'
L8	N24°17'19"W	25.39'
L10	N36°26'45"E	54.32'
L11	N57°11'12"E	10.20'
L12	N62°03'40"E	31.43'
L13	S84°18'49"E	14.13'
L14	N20°51'19"E	51.05'
L15	N15°24'01"E	36.16'
L16	N31°02'18"W	41.54'
L17	N58°21'56"W	22.29'
L18	N54°03'09"W	18.40'
L19	N57°58'05"W	4.17'
L20	N57°41'16"W	15.35'
L21	N34°59'25"W	21.92'
L22	N00°10'53"W	0.51'
L23	N08°18'45"E	5.44'
L24	N16°23'59"E	7.74'
L25	N67°06'25"E	4.37'
L26	N26°26'58"E	13.87'
L27	N78°36'10"E	9.78'
L28	N22°58'17"E	12.08'
L29	S88°17'23"E	4.26'
L30	N82°43'39"E	15.02'
L31	N53°51'32"E	16.02'
L32	N78°24'29"E	1.03'
L33	N46°25'56"E	7.82'
L34	N84°33'58"E	16.66'
L35	N85°47'00"E	21.94'
L36	S88°43'41"E	15.14'
L37	S85°46'32"E	15.30'
L38	N86°49'38"E	15.41'
L39	N36°31'30"E	1.73'
L40	N37°08'35"E	10.32'

LINE	BEARING	DISTANCE
L41	N62°32'27"E	6.35'
L42	N85°50'03"E	22.54'
L43	N11°25'56"E	34.29'
L44	N18°07'09"W	39.33'
L45	N69°14'24"W	35.25'
L46	N75°14'15"W	5.22'
L47	N45°06'08"W	30.48'
L48	N46°09'57"W	35.91'
L49	N54°20'22"W	27.26'
L50	N69°36'12"W	14.71'
L51	N19°23'15"W	4.77'
L52	N49°36'05"W	16.64'
L53	N39°54'12"W	37.18'
L54	N37°03'16"W	18.87'
L55	N34°07'50"W	31.39'
L56	S30°06'05"W	25.74'
L57	N73°41'45"W	30.14'
L58	N65°21'55"W	7.73'
L59	N70°04'58"W	25.93'
L60	N76°10'56"W	18.95'
L61	S10°48'16"W	4.11'
L62	N79°58'09"W	14.46'
L63	S88°38'59"W	30.85'
L64	N71°00'38"W	41.21'
L65	N24°17'19"W	30.48'
L66	N36°26'45"E	68.66'
L67	N57°11'12"E	15.84'
L68	N62°03'40"E	40.05'
L69	N77°52'08"E	10.99'
L70	S67°38'37"E	11.72'
L71	N20°51'19"E	49.86'
L72	N15°24'01"E	24.24'
L73	N31°02'18"W	24.74'
L74	N58°21'56"W	17.16'
L75	N54°03'09"W	18.49'
L76	N57°58'05"W	12.09'
L77	N30°46'04"E	1.60'
L78	N57°41'16"W	29.05'
L79	N18°08'45"E	4.19'

LINE	BEARING	DISTANCE
L80	N16°23'59"E	7.55'
L81	N67°06'25"E	8.60'
L82	N26°26'58"E	16.84'
L83	N78°36'10"E	8.83'
L84	N22°58'17"E	5.87'
L85	N23°17'54"E	8.29'
L86	N50°53'15"E	5.79'
L87	N82°32'49"E	4.09'
L88	S62°03'34"E	6.13'
L89	S88°17'23"E	6.10'
L90	N82°43'39"E	17.02'
L91	N53°30'22"E	4.33'
L92	S46°47'51"E	6.74'
L93	N53°51'32"E	21.46'
L94	N78°24'29"E	12.55'
L95	S46°49'45"E	1.13'
L96	N46°25'56"E	16.46'
L97	N84°33'58"E	25.57'
L98	S85°46'32"E	30.44'
L99	S01°52'56"E	5.05'
L100	N86°49'38"E	3.67'
L101	N36°31'30"E	0.86'
L102	N83°52'40"E	9.24'
L103	N37°08'35"E	22.52'
L104	S82°42'03"E	4.82'
L105	N62°32'27"E	7.39'
L106	N85°50'03"E	8.71'
L107	N11°25'56"E	8.72'
L108	N18°07'09"W	20.78'
L109	N69°14'24"W	23.29'
L110	S85°34'37"W	6.34'
L111	N45°06'08"W	40.86'
L112	N46°09'57"W	33.89'
L113	N85°51'42"W	7.58'
L114	N54°49'35"W	6.44'
L115	N30°48'31"W	10.06'
L116	S86°06'15"W	13.44'
L117	N42°33'11"W	12.16'
L118	N19°23'15"W	9.74'

LINE	BEARING	DISTANCE
L119	N49°36'05"W	12.01'
L120	N39°54'12"W	39.93'
L121	N37°03'16"W	20.13'
L122	N34°07'50"W	36.18'
L123	N39°04'50"W	21.46'
L124	N27°43'11"W	4.04'
L125	S75°55'09"E	39.62'
L126	S57°21'19"W	30.68'
L127	S53°10'16"W	35.97'
L128	S65°58'55"W	49.62'

CURVE	LENGTH	DELTA	RADIUS	CHORD BEARING	CHORD
C1	31.89'	17°16'18"	105.78'	N05°08'02"W	31.77'
C2	16.95'	28°47'30"	33.73'	N08°05'14"E	16.77'
C3	32.65'	74°49'52"	25.00'	N58°16'15"E	30.38'
C4	8.88'	20°21'31"	25.00'	N47°30'30"W	8.84'
C5	25.15'	57°38'32"	25.00'	N82°40'48"E	24.10'
C6	20.77'	47°35'30"	25.00'	N70°13'41"E	20.17'
C7	19.36'	44°21'46"	25.00'	S70°59'29"E	18.88'
C8	28.03'	43°22'20"	37.02'	N58°15'20"E	27.36'
C9	11.63'	44°23'45"	15.01'	N48°32'34"W	11.34'
C10	10.89'	22°20'44"	27.92'	N11°22'13"W	10.82'
C11	25.77'	18°16'31"	80.78'	N04°56'13"W	25.66'
C12	14.84'	47°38'27"	17.85'	N03°47'39"E	14.42'
C13	9.11'	59°47'06"	8.73'	N02°16'40"W	8.71'
C14	6.44'	68°36'58"	5.37'	N02°08'16"E	6.06'
C15	13.91'	50°59'13"	15.63'	N34°59'25"W	13.45'
C16	10.32'	56°31'35"	10.46'	N46°59'33"W	9.90'
C17	6.01'	58°17'33"	5.90'	N10°25'02"E	5.75'
C18	6.97'	62°38'12"	6.38'	N00°10'53"W	6.63'
C19	9.49'	59°40'27"	9.11'	N08°18'45"E	9.07'
C20	14.28'	91°07'35"	8.98'	N10°41'50"E	12.82'
C21	23.64'	27°45'02"	48.80'	N85°47'00"E	23.41'
C22	17.24'	34°02'29"	29.01'	S88°43'41"E	16.98'
C23	9.26'	44°08'01"	12.02'	N58°12'11"E	9.03'
C24	29.27'	13°58'24"	120.00'	S46°11'04"W	29.19'
C25	84.15'	26°47'04"	180.00'	S52°35'23"W	83.38'

ACREAGE TABLE	
LEASE BLOCK:	4.3459 ACRES
F.E.R.C. BUFFER AREA:	0.7420 OF ONE ACRE
SURVEY BLOCK:	5.0879 ACRES TOTAL

STANDARD LAND SURVEY
OF
5.0879 ACRES
SITUATED IN TRACT 5-2-31
AREAS 1-15 AND 1-16, LOTS 3 TO 6
POSSUM KINGDOM LAKE
FRAYHAN DE LA GARZA SURVEY,
ABSTRACT 196
PALO PINTO COUNTY, TEXAS

AECOM

AECOM USA GROUP, INC.
1200 SUMMIT AVENUE, SUITE 600
FORT WORTH, TEXAS 76102
WWW.AECOM.COM
817.698.6770

SURVEYORS CERTIFICATE

TO: BRAZOS RIVER AUTHORITY, PATTERSON PK LAND PARTNERSHIP, LTD., AND HERITAGE TITLE COMPANY OF AUSTIN, INC.

I, JAMES T. MULLER, A REGISTERED PROFESSIONAL LAND SURVEYOR IN THE STATE OF TEXAS, REGISTRATION NUMBER 4522, HEREBY STATE THAT A SURVEY OF THE REAL PROPERTY DESCRIBED IN SEPARATE LEGAL DESCRIPTION AS NOTED HEREON, WAS ACTUALLY MADE UPON THE GROUND UNDER MY DIRECTION AND SUPERVISION, AND THAT TO THE BEST OF MY PROFESSIONAL KNOWLEDGE AND BELIEF, THE INFORMATION SHOWN HEREON IS CORRECT AS DETERMINED BY SAID SURVEY.

THIS SURVEY SUBSTANTIALLY COMPLIES WITH THE CURRENT TEXAS SOCIETY OF PROFESSIONAL SURVEYORS STANDARDS AND SPECIFICATIONS FOR A CATEGORY 1B, CONDITION II SURVEY.

JAMES T. MULLER
REGISTERED PROFESSIONAL LAND SURVEYOR
TEXAS REGISTRATION NO. 4522

DATE: MAY 21, 2010



NOTES:

1) BEARINGS AND COORDINATES SHOWN HEREON ARE BASED ON THE NORTH AMERICAN DATUM OF 1983, TEXAS COORDINATE SYSTEM, NORTH CENTRAL ZONE (4202).

2) 1,000-FOOT CONTOUR ELEVATION OF POSSUM KINGDOM LAKE IS DETERMINED BASED ON MEASUREMENTS FROM THE TOP OF THE EXISTING SPILLWAY CREST GATES AT THE MORRIS SHEPPARD DAM BEING AT ELEVATION 1,000-FEET ABOVE MEAN SEA LEVEL AS NOTED IN FEDERAL POWER COMMISSION REPORT PROJECT NO. 1490 - TEXAS ON JUNE 2, 1938.

3) SET = 5/8" IRON ROD W/CAP STAMPED "AECOM" SET; D.R.P.C.T.= DEED RECORDS, PALO PINTO COUNTY, TEXAS; P.R.P.C.T.= PLAT RECORDS, PALO PINTO COUNTY, TEXAS; F.E.R.C.= FEDERAL ENERGY REGULATORY COMMISSION; J.R.P.C.T.= JUDGEMENT RECORDS, PALO PINTO COUNTY, TEXAS; LFS = 5/8" IRON ROD W/CAP STAMPED "LINKFIELD RPLS 5087" FOUND.

4) METES AND BOUNDS DESCRIPTIONS TO ACCOMPANY THIS SURVEY.

5) LOCATION, POSITION AND GEOMETRY OF ROAD RIGHTS-OF-WAY SHOWN AND DESCRIBED HEREON BASED ON SURVEYS PROVIDED BY LINK FIELD SERVICES, NO DEED OF RECORD HAS BEEN RECORDED AT THIS TIME FOR SAME UNLESS NOTED OTHERWISE.

6) IMPROVEMENTS SHOWN HEREON TIED FEBRUARY 2010.

REVISED: 07/08/10

REVISED: 05/21/10

REVISED: 03/22/10

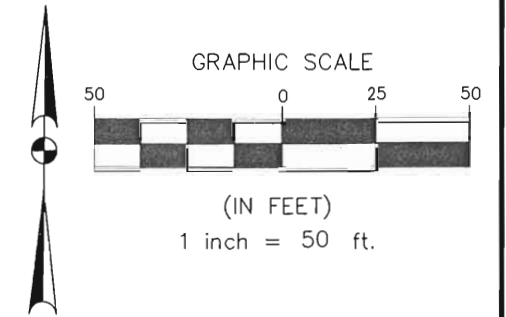
SHEET 1 OF 3

Date: 11/19/09

Project No. 60102581.02

60052528
R023ByR1.dwg

FRAYHAN DE LA GARZA SURVEY
ABSTRACT 196



THE BRAZOS RIVER CONSERVATION
AND RECLAMATION DISTRICT
TRACT 5-2-31
VOLUME 178, PAGE 604
D.R.P.P.C.T.

POINT OF BEGINNING
SET
N 7,001,760.99
E 1,962,236.65

POSSUM KINGDOM CONTROL
MONUMENT NO. 2
N 15°55'02"W
3629.38'

- LEGEND**
- = LEASE CORNER MARKER "AS NOTED"
 - OH = OVERHEAD LINES
 - ⊙ = WATER METER
 - ▽ = FLAG POLE
 - = TELEPHONE PEDESTAL
 - ⊕ = POWER POLE
 - ⊗ = WATER VALVE
 - ⊗ = IRRIGATION CONTROL VALVE
 - ⊕ = FIRE HYDRANT
 - ⊕ = POST
 - ⊕ = ELECTRIC PEDESTAL

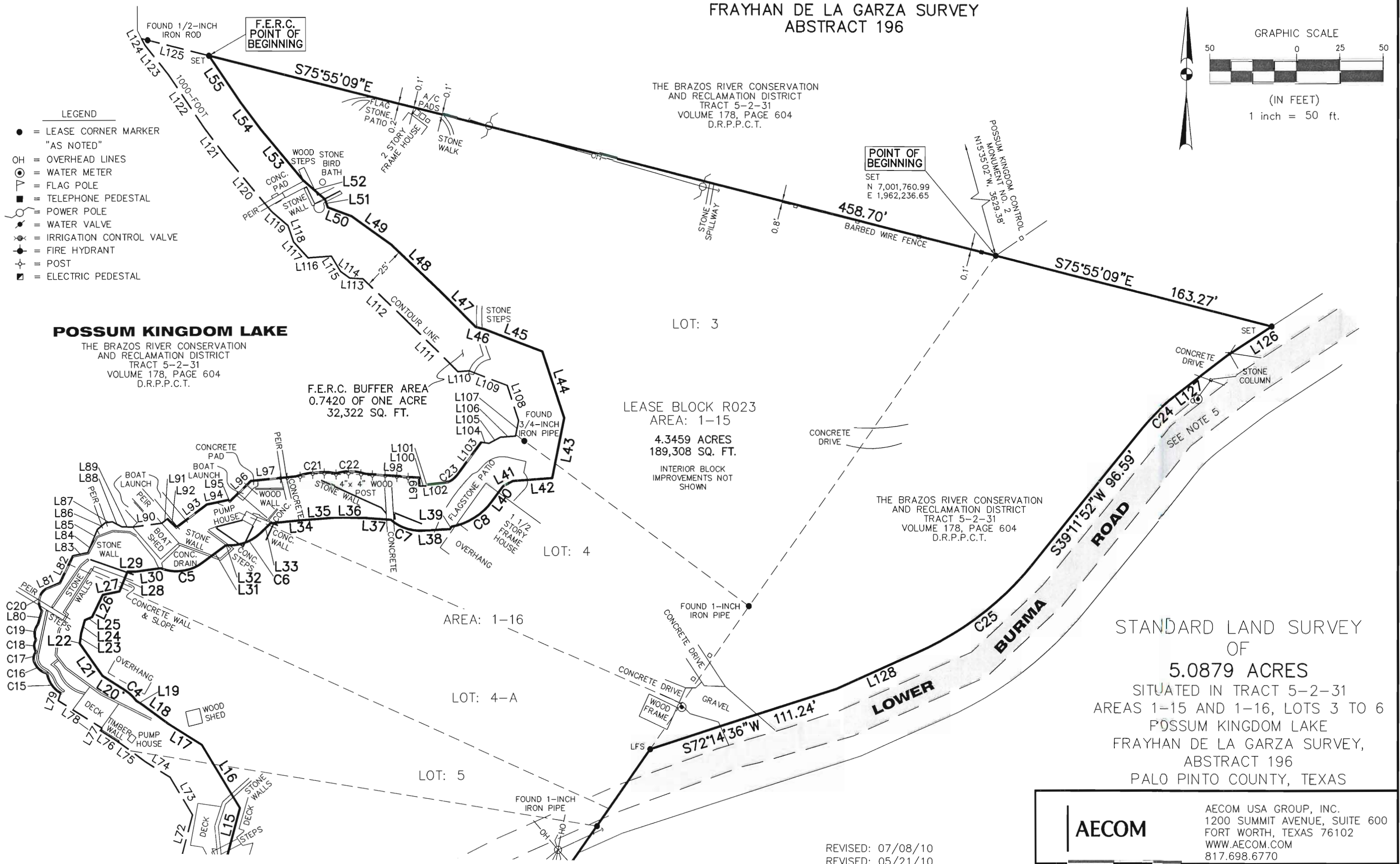
POSSUM KINGDOM LAKE
THE BRAZOS RIVER CONSERVATION
AND RECLAMATION DISTRICT
TRACT 5-2-31
VOLUME 178, PAGE 604
D.R.P.P.C.T.

F.E.R.C. BUFFER AREA
0.7420 OF ONE ACRE
32,322 SQ. FT.

LEASE BLOCK R023
AREA: 1-15
4.3459 ACRES
189,308 SQ. FT.
INTERIOR BLOCK
IMPROVEMENTS NOT
SHOWN

THE BRAZOS RIVER CONSERVATION
AND RECLAMATION DISTRICT
TRACT 5-2-31
VOLUME 178, PAGE 604
D.R.P.P.C.T.

STANDARD LAND SURVEY
OF
5.0879 ACRES
SITUATED IN TRACT 5-2-31
AREAS 1-15 AND 1-16, LOTS 3 TO 6
POSSUM KINGDOM LAKE
FRAYHAN DE LA GARZA SURVEY,
ABSTRACT 196
PALO PINTO COUNTY, TEXAS



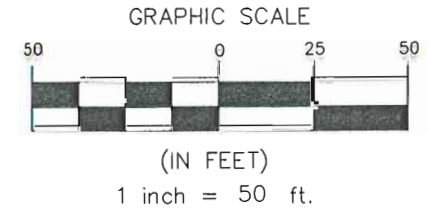
REVISED: 07/08/10
REVISED: 05/21/10
REVISED: 03/22/10 SHEET 2 OF 3

AECOM	AECOM USA GROUP, INC. 1200 SUMMIT AVENUE, SUITE 600 FORT WORTH, TEXAS 76102 WWW.AECOM.COM 817.698.6770
	Date: 11/19/09 Project No. 60102581.02

NO PART OR PARTS OF THIS DRAWING MAY BE REPRODUCED OR RETRANSMITTED IN ANY WAY OR FORM (ELECTRONIC, MECHANICAL, PHOTOCOPYING, OR OTHERWISE) WITHOUT THE EXPRESS WRITTEN PERMISSION OF AECOM.

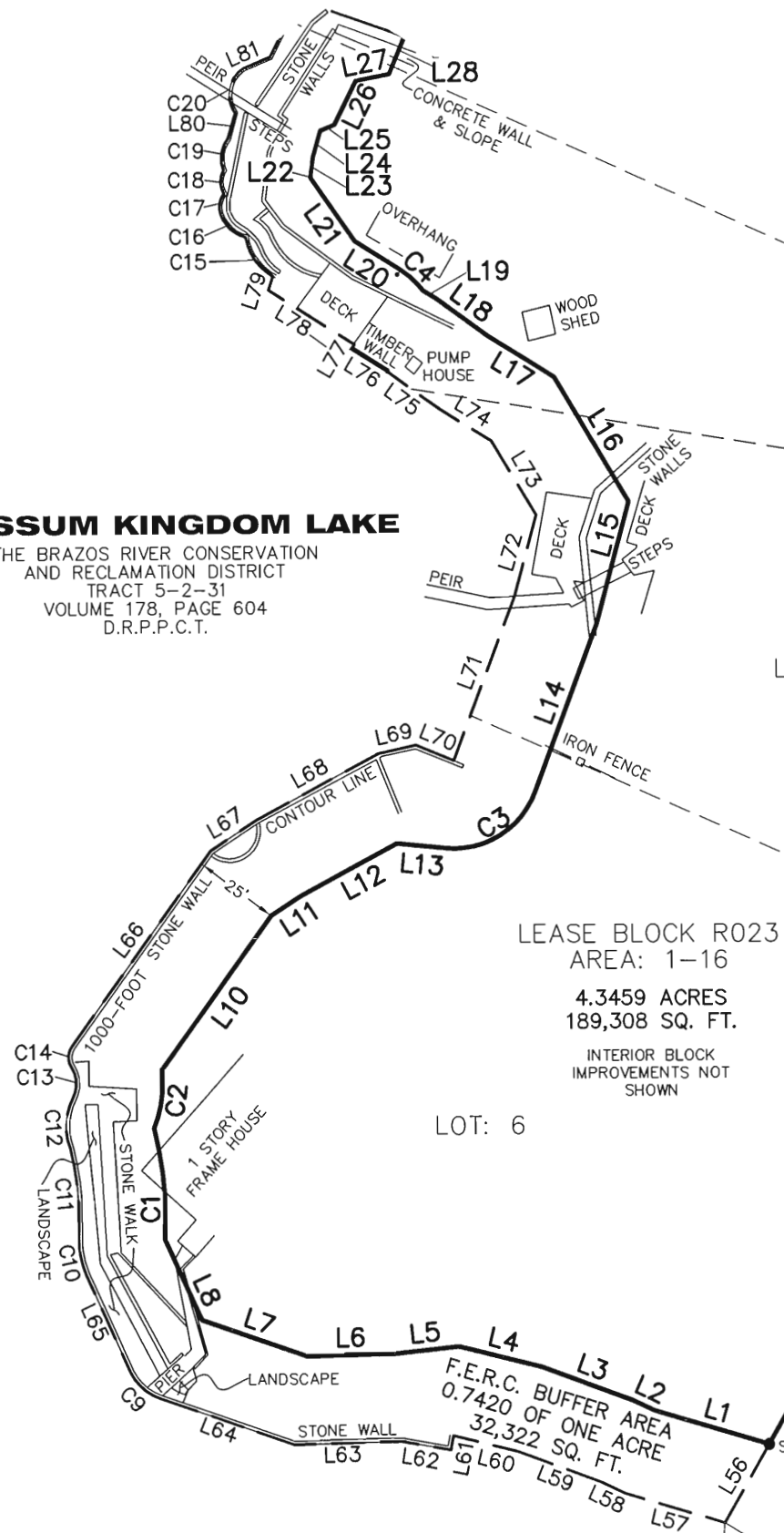
S:\Survey\Projects\60102581\3.0 Ref Docs\Drafting\Undeveloped Strips\Blocks\R023\60052528 R023ByR2.dwg 7/07/2010 04:26:24 PM CDT

FRAYHAN DE LA GARZA SURVEY
ABSTRACT 196



POSSUM KINGDOM LAKE

THE BRAZOS RIVER CONSERVATION
AND RECLAMATION DISTRICT
TRACT 5-2-31
VOLUME 178, PAGE 604
D.R.P.P.C.T.



LEASE BLOCK R023
AREA: 1-16
4.3459 ACRES
189,308 SQ. FT.
INTERIOR BLOCK
IMPROVEMENTS NOT
SHOWN

FOUND 3/8-INCH
IRON ROD BEARS
N55°22'W, 1.0

THE BRAZOS RIVER CONSERVATION
AND RECLAMATION DISTRICT
TRACT 5-2-31
VOLUME 178, PAGE 604
D.R.P.P.C.T.

THE BRAZOS RIVER CONSERVATION
AND RECLAMATION DISTRICT
TRACT 5-2-31
VOLUME 178, PAGE 604
D.R.P.P.C.T.

STANDARD LAND SURVEY
OF
5.0879 ACRES
SITUATED IN TRACT 5-2-31
AREAS 1-15 AND 1-16, LOTS 3 TO 6
POSSUM KINGDOM LAKE
FRAYHAN DE LA GARZA SURVEY,
ABSTRACT 196
PALO PINTO COUNTY, TEXAS

POSSUM KINGDOM LAKE

THE BRAZOS RIVER CONSERVATION
AND RECLAMATION DISTRICT
TRACT 5-2-31
VOLUME 178, PAGE 604
D.R.P.P.C.T.

LOT: 6

LOT: 4-A

LOT: 5

LOT: 5-A

LOWER BURMA ROAD
S72°14'36"W 111.24'
SEE NOTE 5

- LEGEND**
- = LEASE CORNER MARKER "AS NOTED"
 - OH = OVERHEAD LINES
 - ⊙ = WATER METER
 - ▽ = FLAG POLE
 - = TELEPHONE PEDESTAL
 - = POWER POLE
 - ⊙ = WATER VALVE
 - ⊙ = IRRIGATION CONTROL VALVE
 - ⊙ = FIRE HYDRANT
 - ⊙ = POST
 - ⊙ = ELECTRIC PEDESTAL

AECOM

AECOM USA GROUP, INC.
1200 SUMMIT AVENUE, SUITE 600
FORT WORTH, TEXAS 76102
WWW.AECOM.COM
817.698.6770

REVISED: 07/08/10
REVISED: 05/21/10
REVISED: 03/22/10

SHEET 3 OF 3

Date: 11/19/09 Project No. 60102581.02 60052528 R023ByR1.dwg