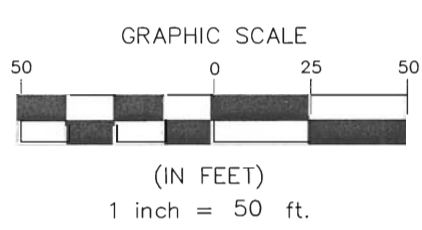
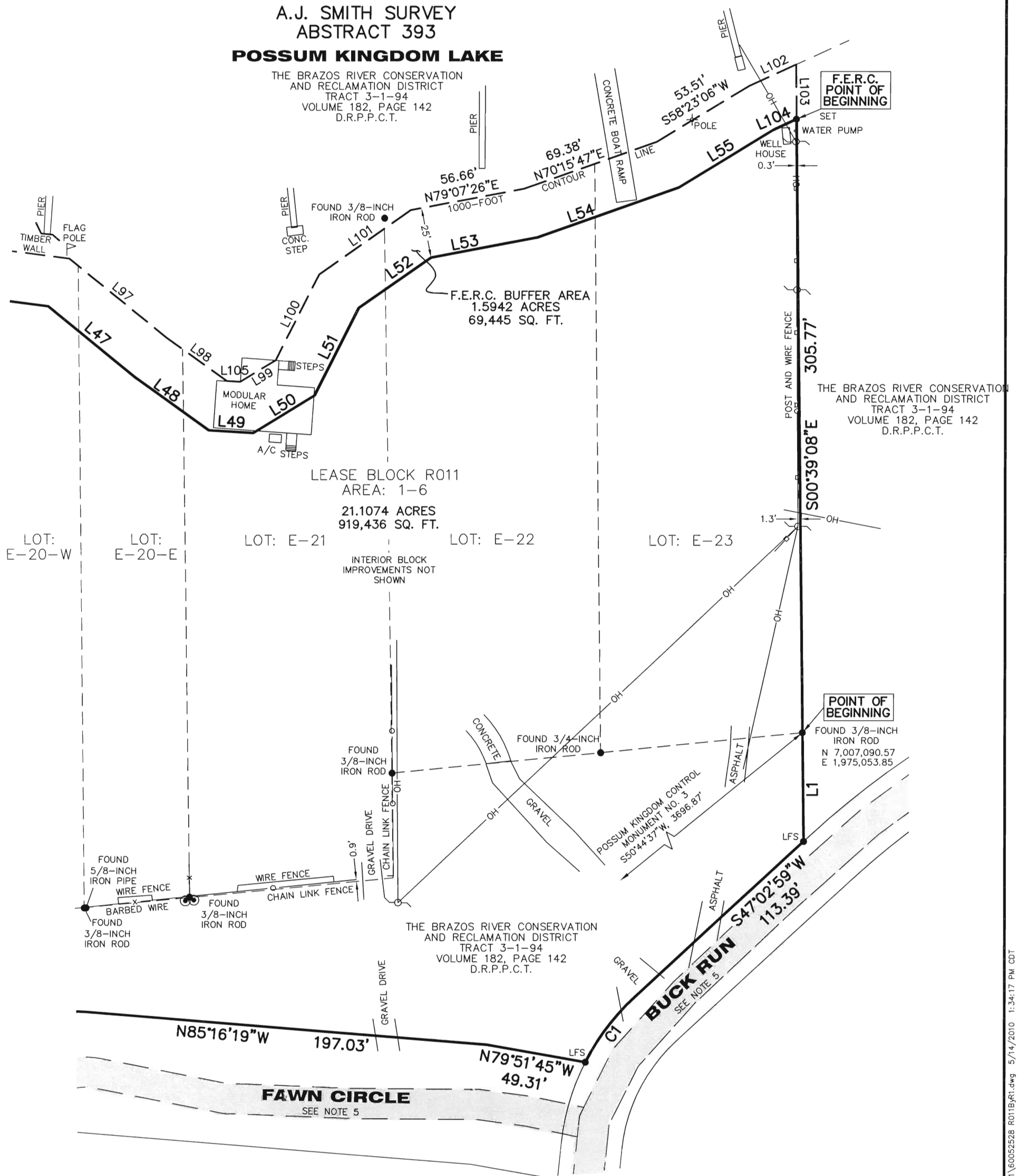


**A.J. SMITH SURVEY
ABSTRACT 393
POSSUM KINGDOM LAKE**

THE BRAZOS RIVER CONSERVATION
AND RECLAMATION DISTRICT
TRACT 3-1-94
VOLUME 182, PAGE 142
D.R.P.P.C.T.



- LEGEND**
- = LEASE CORNER MARKER "AS NOTED"
 - ⊕ = POST
 - OH = OVERHEAD LINES
 - = POWER POLE
 - ⊙ = WATER METER

STANDARD LAND SURVEY
OF
22.7016 ACRES
SITUATED IN TRACT 3-1-94
AREA 1-6, LOTS E-2 TO E-23
POSSUM KINGDOM LAKE
A.J. SMITH SURVEY, ABSTRACT 393
PALO PINTO COUNTY, TEXAS

AECOM	AECOM USA GROUP, INC. 1200 SUMMIT AVENUE, SUITE 600 FORT WORTH, TEXAS 76102 WWW.AECOM.COM 817.698.6770	
	60052528 R011ByR1.dwg	

NO PART OR PARTS OF THIS DRAWING MAY BE REPRODUCED OR TRANSMITTED IN ANY WAY OR FORM (ELECTRONIC, MECHANICAL, PHOTOCOPYING, OR OTHERWISE) WITHOUT THE EXPRESS WRITTEN PERMISSION OF AECOM.

S:\Survey\Projects\60102581\3.0 Ref Docs\Drafting\Undeveloped Strips\Blocks\R011\60052528 R011ByR1.dwg 5/14/2010 1:34:17 PM CDT

A.J. SMITH SURVEY
ABSTRACT 393

POSSUM KINGDOM LAKE

THE BRAZOS RIVER CONSERVATION
AND RECLAMATION DISTRICT
TRACT 3-1-94
VOLUME 182, PAGE 142
D.R.P.P.C.T.

F.E.R.C. BUFFER AREA
1.5942 ACRES
69,445 SQ. FT.

LEASE BLOCK R011
AREA: 1-6
21.1074 ACRES
919,436 SQ. FT.

INTERIOR BLOCK
IMPROVEMENTS NOT
SHOWN

LOT: E-16

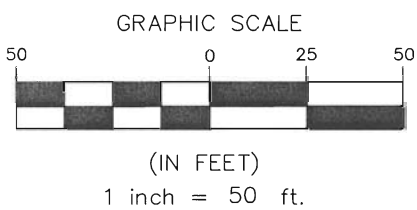
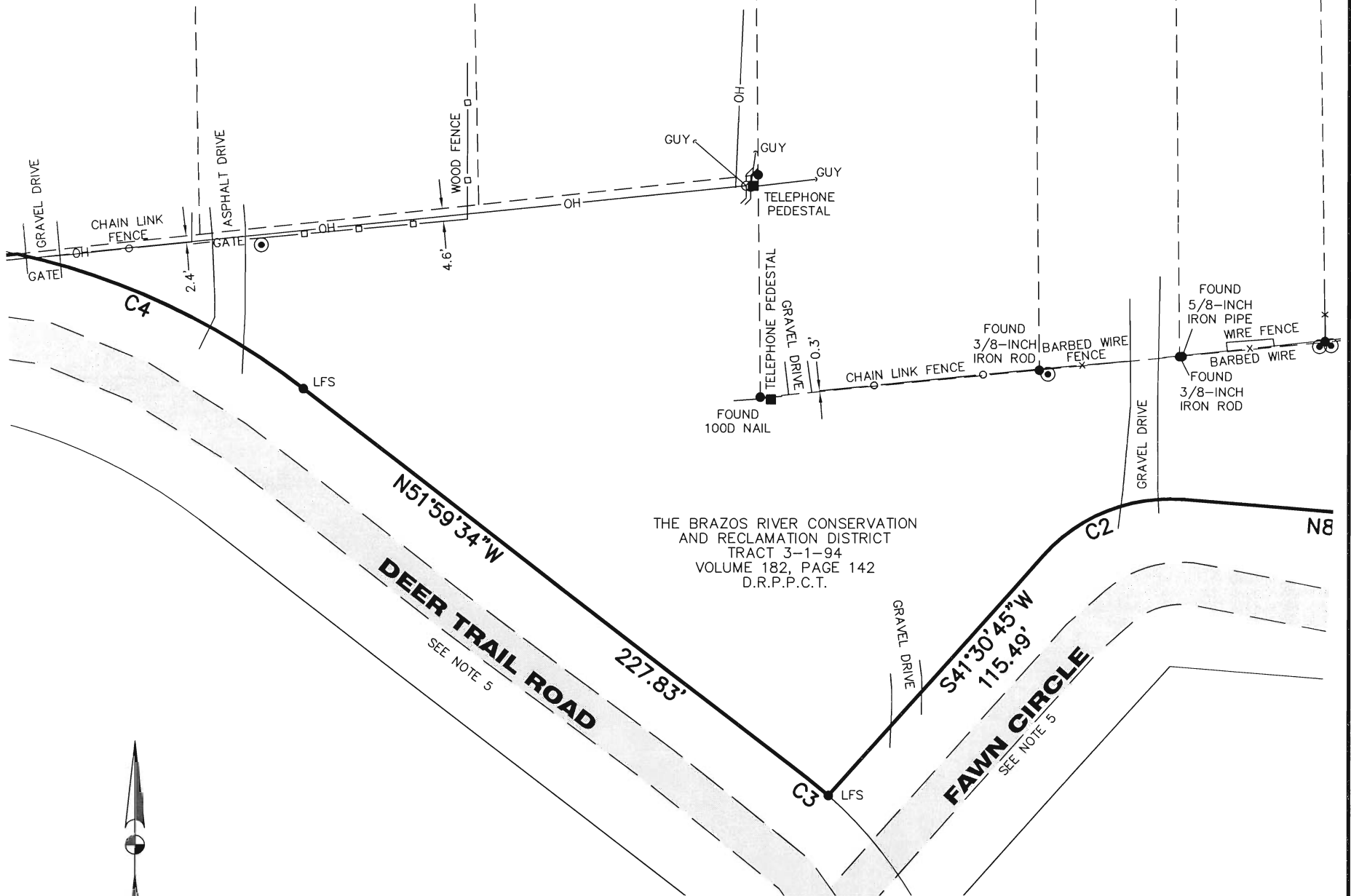
LOT: E-17

LOT: E-18

LOT: E-19

LOT:
E-20-W

LOT:
E-20-E



LEGEND

- = LEASE CORNER MARKER
"AS NOTED"
- ⊕ = POST
- OH = OVERHEAD LINES
- = POWER POLE
- ⊙ = WATER METER

STANDARD LAND SURVEY
OF
22.7016 ACRES

SITUATED IN TRACT 3-1-94
AREA 1-6, LOTS E-2 TO E-23
POSSUM KINGDOM LAKE
A.J. SMITH SURVEY, ABSTRACT 393
PALO PINTO COUNTY, TEXAS

AECOM

AECOM USA GROUP, INC.
1200 SUMMIT AVENUE, SUITE 600
FORT WORTH, TEXAS 76102
WWW.AECOM.COM
817.698.6770

REVISED: 05/21/10 SHEET 3 OF 7

Date: 11/12/09

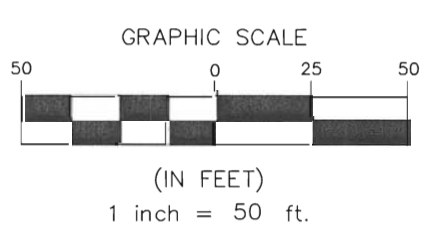
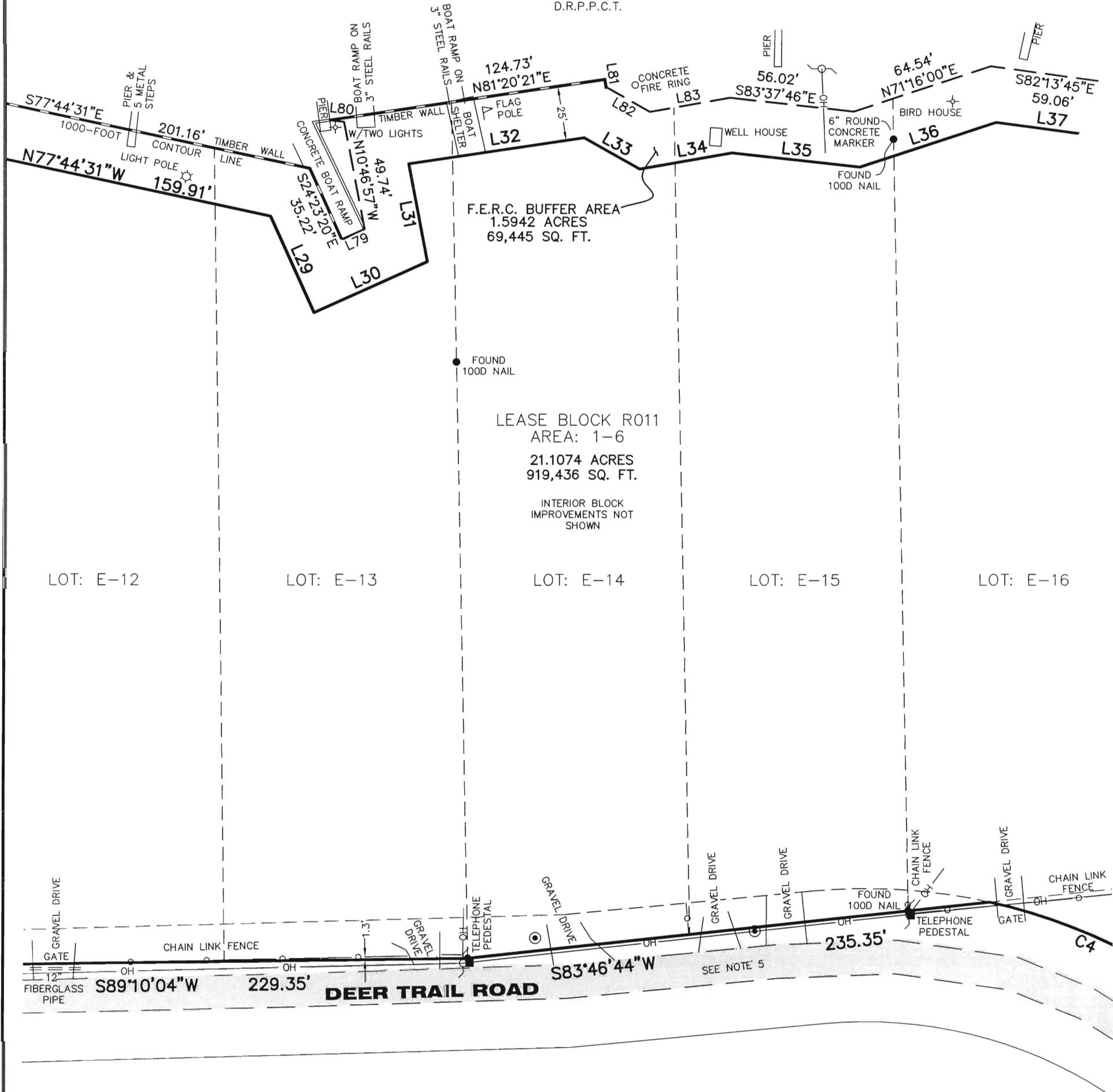
Project No. 60102581.02

60052528
R011ByR1.dwg

A.J. SMITH SURVEY
ABSTRACT 393

POSSUM KINGDOM LAKE

THE BRAZOS RIVER CONSERVATION
AND RECLAMATION DISTRICT
TRACT 3-1-94
VOLUME 182, PAGE 142
D.R.P.P.C.T.



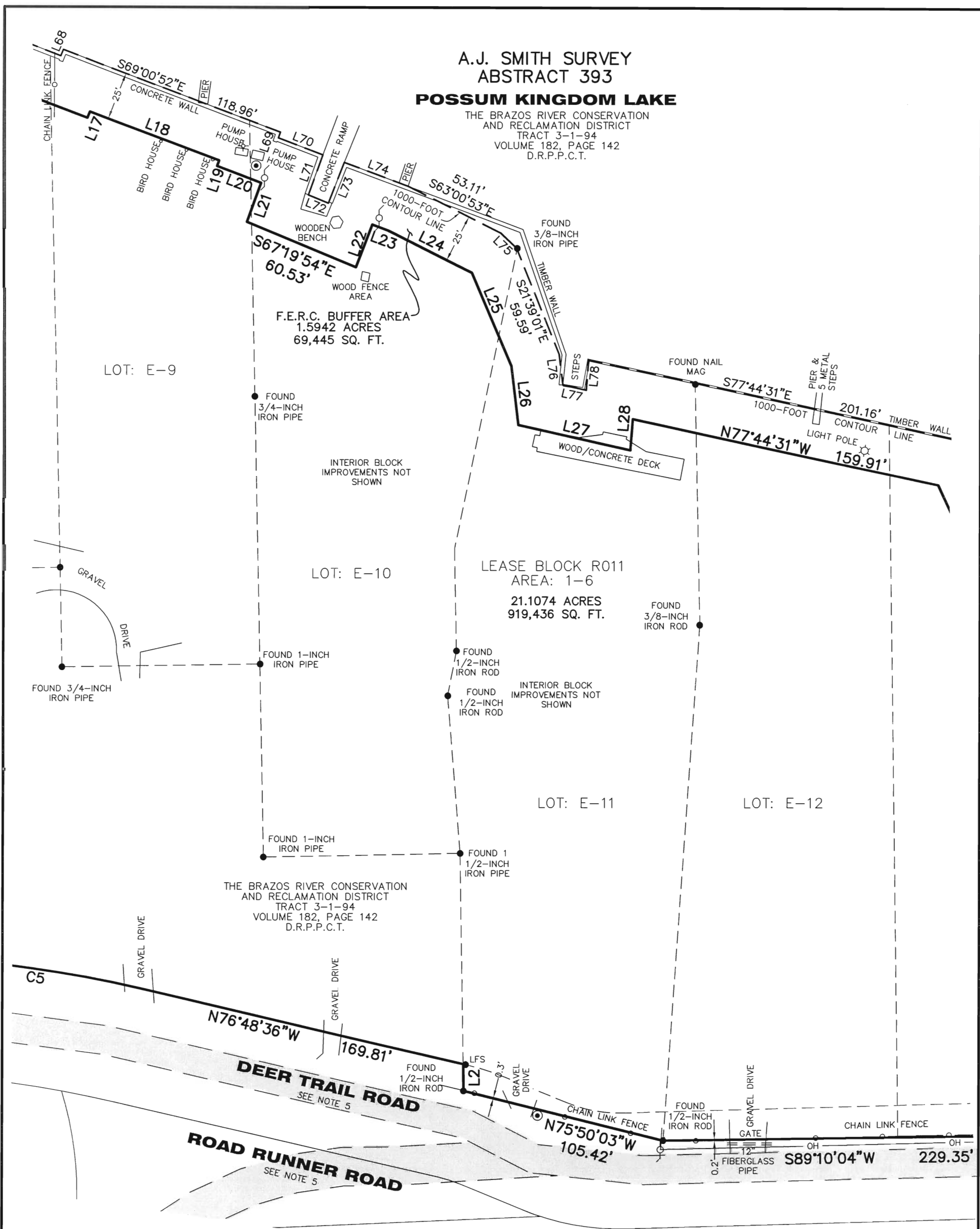
- LEGEND**
- = LEASE CORNER MARKER "AS NOTED"
 - ⊕ = POST
 - OH = OVERHEAD LINES
 - = POWER POLE
 - ⊙ = WATER METER

STANDARD LAND SURVEY
OF
22.7016 ACRES
SITUATED IN TRACT 3-1-94
AREA 1-6, LOTS E-2 TO E-23
POSSUM KINGDOM LAKE
A.J. SMITH SURVEY, ABSTRACT 393
PALO PINTO COUNTY, TEXAS

AECOM	AECOM USA GROUP, INC. 1200 SUMMIT AVENUE, SUITE 600 FORT WORTH, TEXAS 76102 WWW.AECOM.COM 817.698.6770	
	REVISED: 05/21/10 SHEET 4 OF 7	Date: 11/12/09 Project No. 60102581.02

A.J. SMITH SURVEY
 ABSTRACT 393
POSSUM KINGDOM LAKE

THE BRAZOS RIVER CONSERVATION
 AND RECLAMATION DISTRICT
 TRACT 3-1-94
 VOLUME 182, PAGE 142
 D.R.P.P.C.T.



LOT: E-9

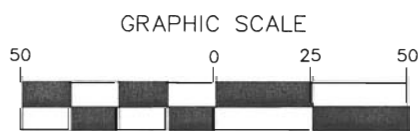
LOT: E-10

LOT: E-11

LOT: E-12

THE BRAZOS RIVER CONSERVATION
 AND RECLAMATION DISTRICT
 TRACT 3-1-94
 VOLUME 182, PAGE 142
 D.R.P.P.C.T.

STANDARD LAND SURVEY
 OF
22.7016 ACRES
 SITUATED IN TRACT 3-1-94
 AREA 1-6, LOTS E-2 TO E-23
 POSSUM KINGDOM LAKE
 A.J. SMITH SURVEY, ABSTRACT 393
 PALO PINTO COUNTY, TEXAS



(IN FEET)
 1 inch = 50 ft.

LEGEND

- = LEASE CORNER MARKER "AS NOTED"
- ⊕ = POST
- OH = OVERHEAD LINES
- = POWER POLE
- ⊙ = WATER METER

AECOM

AECOM USA GROUP, INC.
 1200 SUMMIT AVENUE, SUITE 600
 FORT WORTH, TEXAS 76102
 WWW.AECOM.COM
 817.698.6770

REVISED: 05/21/10 SHEET 5 OF 7

Date: 11/12/09

Project No. 60102581.02

60052528
 R011ByR1.dwg

A.J. SMITH SURVEY
ABSTRACT 393

POSSUM KINGDOM LAKE

THE BRAZOS RIVER CONSERVATION
AND RECLAMATION DISTRICT
TRACT 3-1-94
VOLUME 182, PAGE 142
D.R.P.P.C.T.

F.E.R.C. BUFFER AREA
1.5942 ACRES
69,445 SQ. FT.

LEASE BLOCK R011
AREA: 1-6
21.1074 ACRES
919,436 SQ. FT.

INTERIOR BLOCK
IMPROVEMENTS NOT
SHOWN

LOT: E-5

LOT: E-6

LOT: E-7

LOT: E-8

LOT: E-9

THE BRAZOS RIVER CONSERVATION
AND RECLAMATION DISTRICT
TRACT 3-1-94
VOLUME 182, PAGE 142
D.R.P.P.C.T.

N85°59'53"W

601.67'

C5

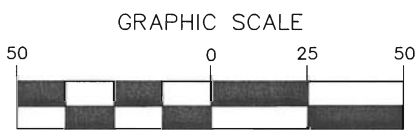
DEER TRAIL ROAD

SEE NOTE 5

STANDARD LAND SURVEY
OF

22.7016 ACRES

SITUATED IN TRACT 3-1-94
AREA 1-6, LOTS E-2 TO E-23
POSSUM KINGDOM LAKE
A.J. SMITH SURVEY, ABSTRACT 393
PALO PINTO COUNTY, TEXAS



(IN FEET)
1 inch = 50 ft.

LEGEND

- = LEASE CORNER MARKER
"AS NOTED"
- ⊕ = POST
- OH = OVERHEAD LINES
- ⊙ = POWER POLE
- ⊗ = WATER METER

AECOM

AECOM USA GROUP, INC.
1200 SUMMIT AVENUE, SUITE 600
FORT WORTH, TEXAS 76102
WWW.AECOM.COM
817.698.6770

REVISED: 05/21/10 SHEET 6 OF 7

Date: 11/12/09

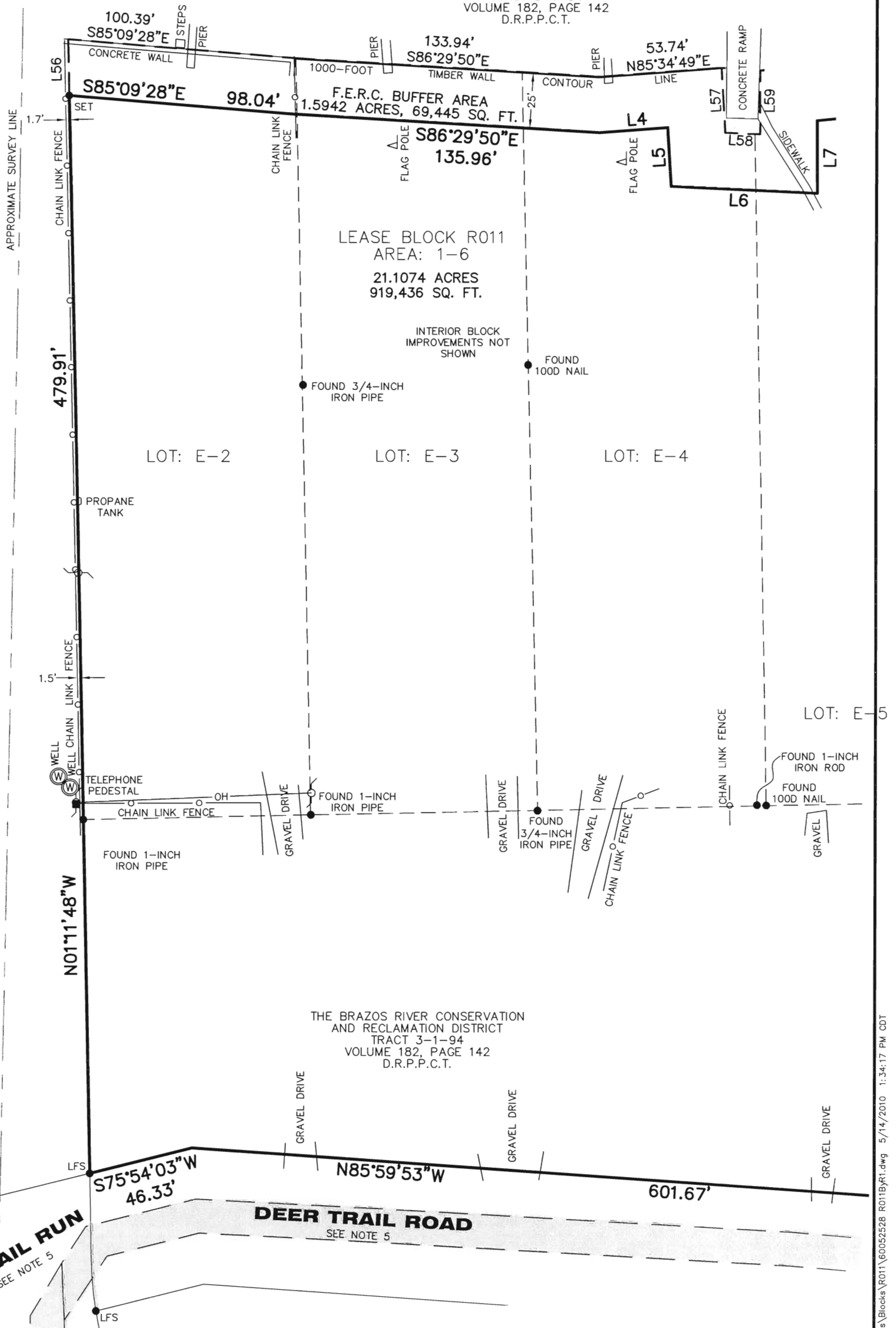
Project No. 60102581.02

60052528
R011ByR1.dwg

FRAYHAN DE LA GARZA SURVEY
ABSTRACT 196

A.J. SMITH SURVEY
ABSTRACT 393
POSSUM KINGDOM LAKE

THE BRAZOS RIVER CONSERVATION
AND RECLAMATION DISTRICT
TRACT 3-1-94
VOLUME 182, PAGE 142
D.R.P.P.C.T.



THE BRAZOS RIVER CONSERVATION
AND RECLAMATION DISTRICT
TRACT 5-2-31
VOLUME 178, PAGES 604 & 605
D.R.P.P.C.T.

THE BRAZOS RIVER CONSERVATION
AND RECLAMATION DISTRICT
TRACT 3-1-94
VOLUME 182, PAGE 142
D.R.P.P.C.T.



(IN FEET)
1 inch = 50 ft.

LEGEND

- = LEASE CORNER MARKER "AS NOTED"
- ⊕ = POST
- OH = OVERHEAD LINES
- ⊙ = POWER POLE
- ⊗ = WATER METER

STANDARD LAND SURVEY
OF

22.7016 ACRES

SITUATED IN TRACT 3-1-94
AREA 1-6, LOTS E-2 TO E-23
POSSUM KINGDOM LAKE
A.J. SMITH SURVEY, ABSTRACT 393
PALO PINTO COUNTY, TEXAS

AECOM

AECOM USA GROUP, INC.
1200 SUMMIT AVENUE, SUITE 600
FORT WORTH, TEXAS 76102
WWW.AECOM.COM
817.698.6770

REVISED: 05/21/10 SHEET 7 OF 7

Date: 11/12/09

Project No. 60102581.02

60052528
R011ByR1.dwg