

VICINITY MAP
NOT TO SCALE

- NOTES:
- 1) BEARINGS AND COORDINATES SHOWN HEREON ARE BASED ON THE NORTH AMERICAN DATUM OF 1983, TEXAS COORDINATE SYSTEM, NORTH CENTRAL ZONE (4202).
 - 2) 1,000-FOOT CONTOUR ELEVATION OF POSSUM KINGDOM LAKE IS DETERMINED BASED ON MEASUREMENTS FROM THE TOP OF THE EXISTING SPILLWAY CREST GATES AT THE MORRIS SHEPPARD DAM BEING AT ELEVATION 1,000- FEET ABOVE MEAN SEA LEVEL AS NOTED IN FEDERAL POWER COMMISSION REPORT PROJECT NO. 1490 - TEXAS ON JUNE 2, 1938.
 - 3) SET = 5/8" IRON ROD W/CAP STAMPED "AECOM" SET; D.R.P.P.C.T.= DEED RECORDS, PALO PINTO COUNTY, TEXAS; P.R.P.P.C.T.= PLAT RECORDS, PALO PINTO COUNTY, TEXAS; F.E.R.C.= FEDERAL ENERGY REGULATORY COMMISSION; J.R.P.P.C.T.= JUDGEMENT RECORDS, PALO PINTO COUNTY, TEXAS; LFS = 5/8" IRON ROD W/CAP STAMPED "LINKFIELD RPLS 5087" FOUND.
 - 4) METES AND BOUNDS DESCRIPTIONS TO ACCOMPANY THIS SURVEY.
 - 5) PARK ROAD 36 RIGHT-OF-WAY EASEMENT RECORDED IN VOLUME 320, PAGE 581 D.R.P.P.C.T. CALLS TO BE A STRIP OF LAND OF VARYING WIDTH. ACCORDING TO GREGG LANE, WITH TxDOT'S WEATHERFORD OFFICE, THE INTENDED WIDTH IS 35- FEET EITHER SIDE OF THE AS BUILT CENTERLINE FOR A TOTAL RIGHT-OF-WAY WIDTH OF 70- FEET.

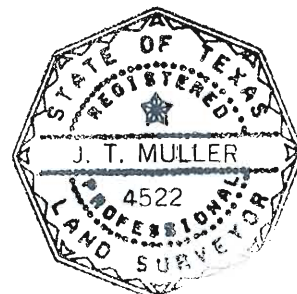
SURVEYORS CERTIFICATE

TO: BRAZOS RIVER AUTHORITY, PATTERSON PK LAND PARTNERSHIP, LTD., AND HERITAGE TITLE COMPANY OF AUSTIN, INC.

I, JAMES T. MULLER, A REGISTERED PROFESSIONAL LAND SURVEYOR IN THE STATE OF TEXAS, REGISTRATION NUMBER 4522, HEREBY STATE THAT A SURVEY OF THE REAL PROPERTY DESCRIBED IN SEPARATE LEGAL DESCRIPTION AS NOTED HEREON, WAS ACTUALLY MADE UPON THE GROUND UNDER MY DIRECTION AND SUPERVISION, AND THAT TO THE BEST OF MY PROFESSIONAL KNOWLEDGE AND BELIEF, THE INFORMATION SHOWN HEREON IS CORRECT AS DETERMINED BY SAID SURVEY.

THIS SURVEY SUBSTANTIALLY COMPLIES WITH THE CURRENT TEXAS SOCIETY OF PROFESSIONAL SURVEYORS STANDARDS AND SPECIFICATIONS FOR A CATEGORY 1B, CONDITION II SURVEY.

JAMES T. MULLER
REGISTERED PROFESSIONAL LAND SURVEYOR
TEXAS REGISTRATION NO. 4522



DATE: JULY 08, 2010

NO PART OR PARTS OF THIS DRAWING MAY BE REPRODUCED OR RETRANSMITTED IN ANY WAY OR FORM (ELECTRONIC, MECHANICAL, PHOTOCOPYING, OR OTHERWISE) WITHOUT THE EXPRESS WRITTEN PERMISSION OF AECOM.

LINE TABLE		
LINE	BEARING	DISTANCE
L1	N60°00'00"W	82.82'
L2	N25°30'23"W	8.92'
L3	S47°20'43"E	7.26'
L4	S59°14'11"E	14.56'
L5	S47°40'41"E	4.53'
L6	S45°34'37"E	5.00'
L7	S36°11'13"E	12.62'
L8	S25°15'47"E	18.73'
L9	S30°01'17"E	18.02'
L10	S26°09'05"W	8.16'
L11	S67°25'54"W	15.30'
L12	S56°31'33"W	25.66'
L13	S68°47'23"W	12.52'
L14	N72°25'44"W	14.01'
L15	S54°55'38"W	20.03'
L16	S48°04'04"W	31.71'
L17	S39°41'58"W	5.64'
L18	S22°21'29"W	7.02'
L19	S50°27'15"W	12.96'
L20	S56°56'43"W	22.57'
L21	S83°01'51"W	8.14'
L22	S39°38'01"W	7.72'
L23	N84°04'02"W	7.43'
L24	S62°30'24"W	19.31'
L25	S57°06'29"W	7.23'
L26	S48°34'05"W	11.49'
L27	S39°11'57"W	21.98'
L28	S20°03'05"W	27.19'
L29	N73°45'11"W	21.67'
L30	S81°55'36"W	27.45'
L31	S46°24'05"W	18.86'
L32	S83°09'25"W	28.88'
L33	S71°05'46"W	34.15'
L34	S00°35'48"W	19.55'
L35	S36°57'46"W	8.62'
L36	S88°54'16"W	19.35'
L37	S48°39'17"W	45.97'
L38	S32°00'08"W	19.29'
L39	S38°05'35"W	28.25'
L40	S55°49'12"W	21.31'
L41	S43°53'03"W	21.84'
L42	S79°07'04"W	11.74'
L43	N80°48'45"W	60.21'
L44	N59°39'54"W	24.36'
L45	N17°58'57"W	3.38'
L46	N56°56'59"W	27.58'
L47	S86°38'01"W	38.94'
L48	N79°01'36"W	3.29'
L49	N57°52'29"W	12.97'
L50	N86°19'04"W	25.60'
L51	N83°20'54"W	17.68'
L52	S75°09'06"W	30.44'
L53	S29°11'30"W	39.35'
L54	S18°31'12"W	34.89'
L55	S05°28'45"W	9.77'
L56	S46°37'10"W	10.31'
L57	S29°23'58"W	25.70'
L58	S21°21'34"E	33.50'
L59	S55°34'41"E	18.87'
L60	S21°06'56"W	7.40'
L61	S09°37'32"W	34.85'
L62	S17°23'21"W	15.93'
L63	S52°45'52"W	10.32'
L64	S60°39'46"W	29.87'
L65	S70°30'51"W	17.03'
L66	S58°08'21"W	40.87'

LINE TABLE		
LINE	BEARING	DISTANCE
L67	S09°53'15"E	16.25'
L68	S55°33'38"W	15.99'
L69	S40°07'54"W	24.81'
L70	S07°17'09"W	10.56'
L71	S36°35'31"W	8.43'
L72	S87°13'46"W	31.08'
L73	N78°24'17"W	18.06'
L74	S49°03'42"W	14.91'
L75	S78°08'09"W	29.92'
L76	N60°24'08"W	23.77'
L77	S47°31'11"W	52.90'
L78	S59°58'44"W	25.91'
L79	S36°19'43"W	24.22'
L80	S21°49'02"W	21.85'
L81	S16°30'30"W	7.07'
L82	S27°15'19"W	8.47'
L83	S54°22'56"W	10.33'
L84	S19°46'19"W	9.10'
L85	S65°47'14"W	30.05'
L86	N72°06'57"W	26.60'
L87	S70°21'28"W	5.53'
L88	S77°17'34"W	18.76'
L89	S33°44'57"W	9.72'
L90	S14°45'00"W	13.17'
L91	S55°00'07"W	34.48'
L92	S66°28'26"W	12.38'
L93	S42°17'29"W	22.95'
L94	S69°54'57"W	20.23'
L95	S51°46'42"W	30.92'
L96	S18°37'29"W	19.60'
L97	N87°21'38"W	5.61'
L98	S46°11'16"W	29.09'
L99	S25°29'45"W	8.19'
L100	S68°11'18"W	23.71'
L101	S18°47'54"W	14.11'
L102	S41°23'26"W	7.18'
L103	S47°53'56"W	24.15'
L104	N88°30'57"W	34.40'
L105	S79°21'53"W	20.56'
L106	N55°00'47"W	7.77'
L107	N52°03'12"W	3.39'
L108	N73°23'28"W	16.09'
L109	N58°08'46"W	11.82'
L110	N61°18'30"W	16.10'
L111	N68°52'55"W	16.17'
L112	S67°38'14"W	26.74'
L113	S53°19'16"W	40.98'
L114	S07°34'57"W	11.42'
L115	S57°25'29"W	31.25'
L116	S36°04'14"W	32.06'
L117	S18°39'16"W	41.13'
L118	S12°05'43"W	11.68'
L119	N88°25'47"W	22.43'
L120	S77°44'05"W	10.96'
L121	S42°33'25"W	10.41'
L122	N77°39'04"W	14.39'
L123	S77°44'05"W	11.91'
L124	S48°47'43"W	14.77'
L125	S70°05'32"W	4.70'
L126	N88°33'36"W	15.06'
L127	S69°32'12"W	37.12'
L128	S62°32'18"W	26.42'
L129	S54°04'27"W	16.22'
L130	S05°41'22"E	28.77'
L131	S39°44'17"W	31.28'
L132	S10°10'29"W	35.25'

LINE TABLE		
LINE	BEARING	DISTANCE
L133	S49°59'02"W	28.33'
L134	S66°28'18"W	12.11'
L135	S89°53'34"W	25.99'
L136	N86°51'02"W	27.55'
L137	S48°11'04"W	80.72'
L138	S68°07'17"W	9.87'
L139	S38°18'09"W	21.42'
L140	S61°51'46"W	27.23'
L141	S43°18'59"W	15.35'
L142	S74°49'41"W	18.44'
L143	S48°53'55"W	37.18'
L144	S64°47'25"W	14.07'
L145	N60°51'03"W	5.50'
L146	S50°33'31"W	1.43'
L147	S74°17'23"W	12.17'
L148	S33°29'12"W	22.72'
L149	S54°38'48"W	6.79'
L150	S42°22'38"W	55.83'
L151	S24°42'04"W	17.04'
L152	S42°07'53"W	9.36'
L153	S15°12'21"W	11.99'
L154	S40°17'23"W	11.02'
L155	S37°08'51"W	40.50'
L156	S41°57'34"W	12.86'
L157	S38°35'10"W	15.41'
L158	S33°21'17"W	10.00'
L159	S42°16'43"W	45.30'
L160	S53°20'56"W	24.97'
L161	S71°36'06"W	7.55'
L162	S41°28'19"W	31.36'
L163	S21°45'07"W	13.35'
L164	S13°31'03"W	21.29'
L165	S36°10'30"W	5.86'
L166	S18°30'46"W	30.01'
L167	S30°26'47"W	40.81'
L168	S26°40'53"W	3.62'
L169	S31°13'29"W	6.49'
L170	S42°29'49"W	5.78'
L171	S05°59'53"W	10.31'
L172	S54°41'14"W	13.74'
L173	S41°53'56"W	16.99'
L174	S52°38'41"W	15.30'
L175	S15°27'24"W	10.19'
L176	S37°23'03"W	1.15'
L177	S46°10'47"W	83.43'
L178	S06°39'47"E	10.91'
L179	N74°30'45"E	26.04'
L180	S50°32'39"E	15.67'
L181	S62°06'16"E	4.35'
L182	S60°54'53"E	2.59'
L183	S00°12'30"W	3.98'
L184	S36°11'13"E	11.35'
L185	S26°40'39"E	28.55'
L186	N19°48'06"E	12.20'
L187	S63°33'21"E	8.53'
L188	S03°12'07"W	5.27'
L189	S26°44'09"E	3.30'
L190	S73°27'04"E	10.11'
L191	S07°23'18"E	12.88'
L192	S08°30'36"W	11.99'
L193	S74°29'37"W	10.61'
L194	S84°38'48"W	6.47'
L195	S37°41'59"W	3.78'
L196	S26°09'05"W	10.05'

REVISED: 07/08/10
 REVISED: 06/11/10
 REVISED: 06/09/10
 REVISED: 05/21/10 SHEET 1 OF 10

LINE TABLE		
LINE	BEARING	DISTANCE
L197	S13°09'53"E	5.84'
L198	S50°03'06"W	9.75'
L199	N31°51'07"W	3.09'
L200	S75°38'01"W	4.04'
L201	S67°25'54"W	13.66'
L202	S35°33'34"E	9.82'
L203	S29°46'30"E	4.68'
L204	S58°18'32"W	6.16'
L205	S59°06'36"W	8.18'
L206	N89°17'36"W	2.85'
L207	N34°19'28"W	7.22'
L208	N69°56'48"W	2.91'
L209	S81°36'06"W	4.75'
L210	S68°59'02"W	3.17'
L211	S17°28'09"E	8.98'
L212	S51°01'43"W	10.64'
L213	S67°30'37"W	6.57'
L214	N72°25'44"W	11.08'
L215	S54°55'38"W	6.17'
L216	S48°04'04"W	28.38'
L217	S22°21'29"W	9.46'
L218	S50°27'15"W	20.63'
L219	S56°56'43"W	13.64'
L220	S60°21'58"E	4.71'
L221	S00°35'39"W	9.13'
L222	N60°45'16"W	8.06'
L223	S83°01'51"W	14.55'
L224	S39°38'01"W	11.15'
L225	N84°04'02"W	13.30'
L226	S62°30'24"W	10.63'
L227	S57°06'29"W	4.19'
L228	S48°34'05"W	7.57'
L229	S39°11'57"W	15.83'
L230	S20°33'51"W	32.07'
L231	S58°38'00"W	21.13'
L232	N62°10'04"W	9.52'
L233	N79°06'49"W	5.18'
L234	S78°19'05"W	9.90'

LINE TABLE		
LINE	BEARING	DISTANCE
L235	N15°02'54"W	5.43'
L236	S81°55'36"W	14.05'
L237	S46°24'05"W	19.16'
L238	S83°09'25"W	34.54'
L239	S71°05'46"W	13.84'
L240	S00°35'48"W	10.09'
L241	S36°10'00"W	16.19'
L242	S40°00'56"W	4.22'
L243	S55°40'55"W	12.37'
L244	S88°54'16"W	17.58'
L245	S32°27'34"E	4.44'
L246	S66°32'47"W	13.76'
L247	S48°39'17"W	19.18'
L248	S11°21'11"W	9.82'
L249	S56°01'44"W	8.51'
L250	S38°05'35"W	23.58'
L251	S26°03'18"E	3.05'
L252	S55°49'12"W	31.60'
L253	S43°53'03"W	27.17'
L254	S79°07'04"W	24.10'
L255	N80°48'45"W	69.30'
L256	N59°39'54"W	38.55'
L257	N17°58'57"W	4.05'
L258	N56°56'59"W	10.51'
L259	S86°38'01"W	33.86'
L260	N79°01'36"W	12.42'
L261	N56°50'25"W	10.60'
L262	S57°56'25"W	15.97'
L263	N78°33'15"W	6.57'
L264	N04°47'53"E	8.44'
L265	N83°20'54"W	13.59'
L266	S75°09'06"W	15.09'
L267	S29°11'30"W	26.42'
L268	S04°13'30"W	18.06'
L269	S13°21'46"W	9.13'
L270	S78°00'21"W	6.13'
L271	S05°28'45"W	20.47'
L272	S55°06'14"W	14.76'

ACREAGE TABLE	
LEASE BLOCK:	10.2604 ACRES
F.E.R.C. BUFFER AREA:	2.2415 ACRES
SURVEY BLOCK:	12.5019 ACRES TOTAL

STANDARD LAND SURVEY
 OF
12.5019 ACRES
 SITUATED IN TRACT 3-1-94
 AREA 1-26, LOTS 1 - 18
 AREA 1-27, LOTS 1 - 6
 POSSUM KINGDOM LAKE
 A.J. SMITH SURVEY, ABSTRACT 393
 PALO PINTO COUNTY, TEXAS

	AECOM USA GROUP, INC. 1200 SUMMIT AVENUE, SUITE 600 FORT WORTH, TEXAS 76102 WWW.AECOM.COM 817.698.6770	
	Date: 12/17/09	Project No. 60102581.02
		60052528 R009By.dwg

LINE TABLE		
LINE	BEARING	DISTANCE
L273	S29°23'58"W	8.14'
L274	S21°21'34"E	13.95'
L275	S55°34'41"E	26.81'
L276	S02°41'41"W	12.73'
L277	S21°06'56"W	13.54'
L278	S09°37'32"W	34.03'
L279	S17°23'21"W	21.75'
L280	S29°45'46"W	5.70'
L281	S52°45'52"W	17.91'
L282	S60°39'46"W	33.75'
L283	S49°51'49"W	11.26'
L284	N75°42'46"W	7.14'
L285	S58°08'21"W	21.29'
L286	S09°53'15"E	13.48'
L287	S49°18'24"W	18.15'
L288	S56°17'39"W	11.60'
L289	S40°07'54"W	13.89'
L290	S07°17'09"W	9.72'
L291	S36°35'31"W	27.36'
L292	S31°02'34"E	6.23'
L293	S44°31'47"W	14.00'
L294	N54°31'15"W	13.16'
L295	N08°12'08"E	7.41'
L296	S87°13'46"W	29.44'
L297	N78°24'17"W	21.21'
L298	S49°03'42"W	21.39'
L299	S78°08'09"W	44.86'
L300	S61°16'05"W	3.69'
L301	S78°50'29"W	3.70'
L302	N04°50'41"E	5.38'
L303	N60°24'08"W	8.81'
L304	S47°31'11"W	37.44'
L305	S59°58'44"W	23.41'
L306	S36°19'43"W	15.80'
L307	S21°49'02"W	17.51'
L308	S16°30'30"W	8.14'
L309	S26°40'29"W	11.41'
L310	S43°49'57"E	5.58'
L311	S73°31'01"W	7.06'
L312	S11°39'31"W	3.85'
L313	N75°09'16"W	4.35'
L314	S54°22'56"W	2.09'
L315	S19°46'19"W	21.81'
L316	S47°42'52"W	4.63'
L317	N06°35'52"W	8.97'
L318	S65°47'14"W	28.08'
L319	S36°47'01"W	5.95'
L320	S68°07'06"W	15.47'
L321	N63°47'17"W	11.76'
L322	N18°31'01"E	4.67'
L323	N72°06'57"W	20.95'
L324	S60°24'43"W	7.36'
L325	S32°31'41"W	6.92'
L326	S70°21'28"W	18.57'
L327	N72°18'06"W	2.05'
L328	S33°44'57"W	6.21'
L329	S63°38'02"W	9.05'
L330	S38°50'17"E	5.83'
L331	S60°50'25"E	10.32'
L332	S57°00'35"W	14.82'
L333	S55°30'35"W	17.76'
L334	S55°00'07"W	35.52'
L335	S66°28'26"W	9.53'
L336	S42°17'29"W	17.79'
L337	S16°22'51"W	8.49'
L338	S42°28'01"W	19.04'

LINE TABLE		
LINE	BEARING	DISTANCE
L339	N44°04'48"W	14.06'
L340	S51°46'42"W	19.48'
L341	S18°37'29"W	22.72'
L342	S41°58'01"E	11.82'
L343	S56°31'25"W	7.62'
L344	N46°44'28"W	7.59'
L345	N87°21'38"W	12.40'
L346	S46°11'16"W	13.80'
L347	S25°29'45"W	16.18'
L348	S52°01'47"W	15.69'
L349	N59°43'48"W	7.93'
L350	S06°50'32"W	5.16'
L351	S41°23'26"W	16.37'
L352	S47°53'56"W	7.15'
L353	S75°13'34"W	7.10'
L354	S24°38'30"W	8.26'
L355	S43°41'40"E	1.54'
L356	S51°52'17"W	21.62'
L357	N42°03'41"W	6.70'
L358	N88°30'57"W	32.08'
L359	S79°21'53"W	14.39'
L360	S57°09'47"W	9.97'
L361	S18°06'09"W	1.96'
L362	N66°15'54"W	7.47'
L363	N74°17'31"W	10.60'
L364	N06°02'07"E	6.90'
L365	N55°00'47"W	4.23'
L366	N52°03'12"W	7.42'
L367	S57°39'27"W	4.08'
L368	N63°34'46"W	2.08'
L369	N59°34'46"W	13.67'
L370	N56°23'37"W	11.18'
L371	N61°18'30"W	13.75'
L372	N68°52'55"W	4.55'
L373	S67°38'14"W	13.63'
L374	S53°19'16"W	27.30'
L375	S07°34'57"W	12.50'
L376	S57°25'29"W	38.16'
L377	S36°04'14"W	23.52'
L378	S08°02'24"E	5.12'
L379	S31°50'17"W	8.80'
L380	S39°36'07"E	14.22'
L381	S28°35'07"W	6.91'
L382	N63°42'03"W	10.19'
L383	S25°04'21"W	9.85'
L384	S48°49'38"E	12.64'
L385	S33°40'35"W	4.08'
L386	N71°02'41"W	9.62'
L387	S07°52'28"W	18.16'
L388	S52°32'36"W	3.77'
L389	S55°57'14"E	3.29'
L390	S25°32'39"W	6.85'
L391	S50°37'40"W	12.91'
L392	N33°15'19"W	7.02'
L393	N20°39'50"W	7.83'
L394	N68°31'42"W	5.96'
L395	N88°25'47"W	16.98'
L396	S42°33'25"W	13.95'
L397	S34°57'14"E	2.89'
L398	S73°50'59"W	8.20'
L399	N44°36'21"W	6.17'
L400	N77°39'04"W	14.53'
L401	S48°47'43"W	13.02'
L402	S70°05'32"W	14.11'
L403	N88°33'36"W	14.94'
L404	S60°15'59"W	14.27'

LINE TABLE		
LINE	BEARING	DISTANCE
L405	S47°42'51"W	6.63'
L406	N86°05'21"W	11.54'
L407	S62°32'18"W	23.04'
L408	S05°41'22"E	23.77'
L409	S20°44'49"W	2.41'
L410	S39°44'17"W	33.65'
L411	S10°10'29"W	33.32'
L412	S40°19'25"W	17.22'
L413	S40°53'35"E	5.19'
L414	S04°25'48"W	11.04'
L415	S68°49'49"W	10.10'
L416	N49°48'24"W	7.36'
L417	N25°10'18"E	3.13'
L418	N67°21'12"W	1.50'
L419	S31°02'46"W	5.43'
L420	S10°04'01"W	9.54'
L421	S25°30'32"W	6.62'
L422	S72°24'28"W	13.94'
L423	N20°58'50"W	4.61'
L424	N50°34'07"W	7.00'
L425	S48°35'18"W	7.02'
L426	S64°11'56"W	4.63'
L427	N84°29'04"W	4.71'
L428	N49°39'25"W	4.90'
L429	N28°37'29"E	1.21'
L430	N53°51'00"W	3.87'
L431	S83°18'29"W	5.89'
L432	N86°51'02"W	23.46'
L433	S40°15'57"W	17.50'
L434	S55°25'18"W	6.18'
L435	S02°45'31"E	3.41'
L436	S40°04'19"W	12.07'
L437	N50°34'31"W	5.78'
L438	S46°04'12"W	16.78'
L439	S50°44'04"W	23.66'
L440	S86°41'33"W	4.03'
L441	S34°19'20"W	10.47'
L442	S49°34'08"W	3.45'
L443	S38°37'23"W	9.57'
L444	S69°41'40"W	10.03'
L445	S27°10'52"W	5.11'
L446	S59°48'11"W	5.42'
L447	N89°30'25"W	6.47'
L448	S40°24'02"W	14.44'
L449	S45°22'02"W	20.52'
L450	N47°56'15"W	10.32'
L451	S48°53'55"W	34.91'
L452	S64°47'25"W	35.13'
L453	N81°43'11"W	11.42'
L454	N28°42'47"E	7.92'
L455	N60°51'03"W	4.84'
L456	S50°33'31"W	6.68'
L457	S74°17'23"W	8.13'
L458	S33°29'12"W	18.09'
L459	S54°38'48"W	8.77'
L460	S35°32'16"W	16.61'
L461	S50°23'39"W	10.31'
L462	S43°44'49"W	22.57'
L463	S24°42'04"W	16.98'
L464	S42°07'53"W	7.21'
L465	S11°47'44"E	1.62'
L466	N59°43'30"E	2.12'
L467	S35°50'02"E	3.00'
L468	S40°17'23"W	26.65'
L469	S37°17'24"W	42.11'
L470	S41°57'34"W	11.93'

LINE TABLE		
LINE	BEARING	DISTANCE
L471	S38°35'10"W	13.54'
L472	S33°21'17"W	10.81'
L473	S42°16'43"W	49.67'
L474	S53°20'56"W	31.40'
L475	S71°36'06"W	11.57'
L476	S27°59'45"E	6.93'
L477	S01°45'56"E	10.95'
L478	S22°17'27"W	9.51'
L479	S41°28'19"W	31.35'
L480	S21°45'07"W	7.20'
L481	S13°31'03"W	24.50'
L482	S36°10'30"W	6.98'
L483	S18°30'46"W	20.33'
L484	S20°24'52"W	9.98'
L485	S30°26'47"W	41.00'
L486	S26°40'53"W	3.79'
L487	S31°13'29"W	9.95'
L488	S05°59'53"W	8.96'
L489	N79°21'45"E	5.89'
L490	S45°07'10"W	26.21'
L491	S76°31'29"W	2.47'
L492	N78°03'07"W	3.50'
L493	S41°53'56"W	23.68'
L494	S83°28'35"W	2.60'
L495	S15°27'24"W	6.62'
L496	S37°23'03"W	7.92'
L497	S46°10'47"W	72.93'
L498	S06°39'47"E	3.23'
L499	S35°38'12"E	6.68'
L500	S05°01'02"E	4.55'
L501	S09°45'30"W	4.95'
L502	N60°00'00"W	33.29'
L503	N28°18'39"E	6.57'
L504	N69°09'18"E	3.79'
L505	S85°33'11"E	74.46'
L506	N74°30'45"E	23.55'

CURVE TABLE					
CURVE	LENGTH	DELTA	RADIUS	CHORD BEARING	CHORD
C1	21.61'	49°31'13"	25.00'	S42°05'22"E	20.94'
C2	26.11'	27°52'32"	53.67'	S39°36'07"W	25.86'
C3	22.92'	52°32'01"	25.00'	S75°19'42"W	22.13'
C4	33.31'	76°19'51"	25.00'	S69°43'07"W	30.90'
C5	23.54'	53°57'20"	25.00'	S41°43'40"W	22.68'
C6	17.36'	39°46'31"	25.00'	N74°54'02"W	17.01'
C7	29.93'	68°35'26"	25.00'	S84°51'14"W	28.17'
C8	44.39'	101°44'36"	25.00'	S20°43'48"W	38.79'
C9	9.06'	42°57'52"	12.08'	S48°23'16"W	8.85'
C10	13.40'	26°46'12"	28.67'	S38°52'10"W	13.27'
C11	14.20'	66°43'54"	12.19'	S47°45'37"E	13.41'
C12	11.31'	72°22'42"	8.96'	S89°04'13"W	10.58'
C13	138.77'	11°53'04"	669.02'	N23°47'27"E	138.52'
C14	48.13'	10°24'20"	265.00'	N23°03'05"E	48.06'
C15	241.51'	16°58'51"	814.87'	N36°44'41"E	240.62'
C16	120.56'	14°51'18"	465.00'	N52°39'46"E	120.22'

STANDARD LAND SURVEY
OF
12.5019 ACRES
SITUATED IN TRACT 3-1-94
AREA 1-26, LOTS 1 - 18
AREA 1-27, LOTS 1 - 6
POSSUM KINGDOM LAKE
A.J. SMITH SURVEY, ABSTRACT 393
PALO PINTO COUNTY, TEXAS

AECOM

AECOM USA GROUP, INC.
1200 SUMMIT AVENUE, SUITE 600
FORT WORTH, TEXAS 76102
WWW.AECOM.COM
817.698.6770

REVISED: 07/08/10
REVISED: 06/11/10
REVISED: 06/09/10
REVISED: 05/21/10

SHEET 2 OF 10

Date: 12/17/09

Project No. 60102581.02

60052528
R009By.dwg

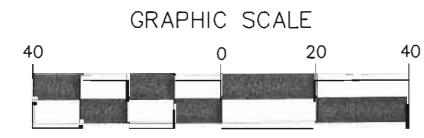
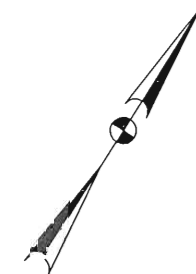
THE BRAZOS RIVER CONSERVATION
AND RECLAMATION DISTRICT
TRACT 3-1-94
VOLUME 182, PAGE 142
D.R.P.P.C.T.

A.J. SMITH SURVEY
ABSTRACT 393

PARK ROAD 36

70-FOOT WIDE RIGHT-OF-WAY
VOLUME 320, PAGE 581
D.R.P.P.C.T.
SEE NOTE 5

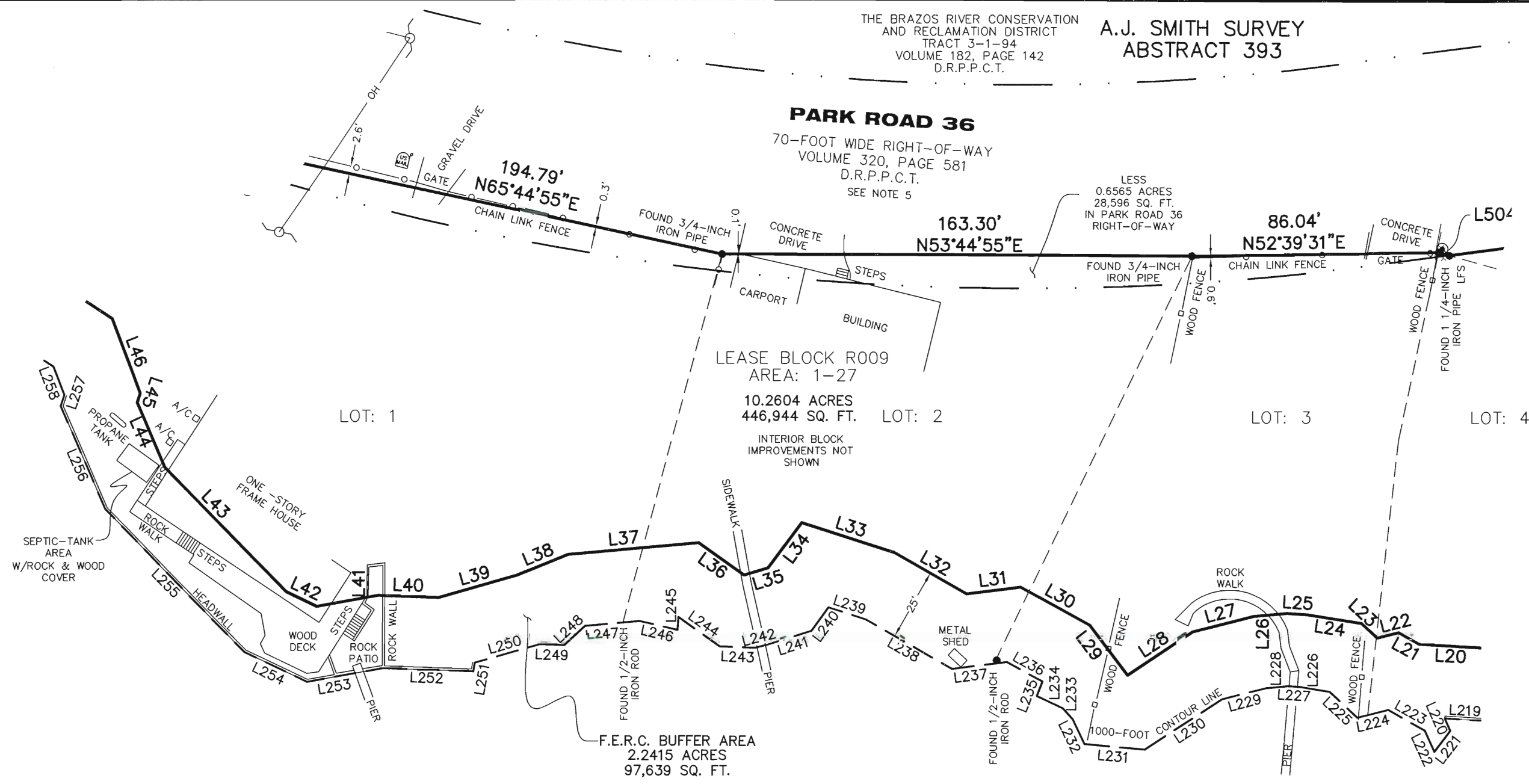
LESS
0.6565 ACRES
28,596 SQ. FT.
IN PARK ROAD 36
RIGHT-OF-WAY



(IN FEET)
1 inch = 40 ft.

LEGEND

- = LEASE CORNER MARKER "AS NOTED"
- ⊕ = POST
- OH = OVERHEAD LINES
- = POWER POLE
- ⊙ = WATER METER
- ⊛ = WATER VALVE
- ⊗ = IRRIGATION VALVE
- ⊠ = ELECTRIC BOX
- = CLEAN OUT



STANDARD LAND SURVEY
OF
12.5019 ACRES
SITUATED IN TRACT 3-1-94
AREA 1-26, LOTS 1 - 18
AREA 1-27, LOTS 1 - 6
POSSUM KINGDOM LAKE
A.J. SMITH SURVEY, ABSTRACT 393
PALO PINTO COUNTY, TEXAS

POSSUM KINGDOM LAKE

THE BRAZOS RIVER CONSERVATION
AND RECLAMATION DISTRICT
TRACT 3-1-94
VOLUME 182, PAGE 142
D.R.P.P.C.T.

AECOM	AECOM USA GROUP, INC. 1200 SUMMIT AVENUE, SUITE 600 FORT WORTH, TEXAS 76102 WWW.AECOM.COM 817.698.6770
	60052528 R009By.dwg

REVISED: 07/08/10
REVISED: 06/11/10
REVISED: 06/09/10
REVISED: 05/21/10

SHEET 4 OF 10

Date: 12/17/09

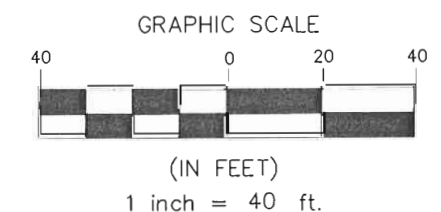
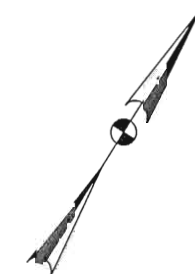
Project No. 60102581.02

60052528
R009By.dwg

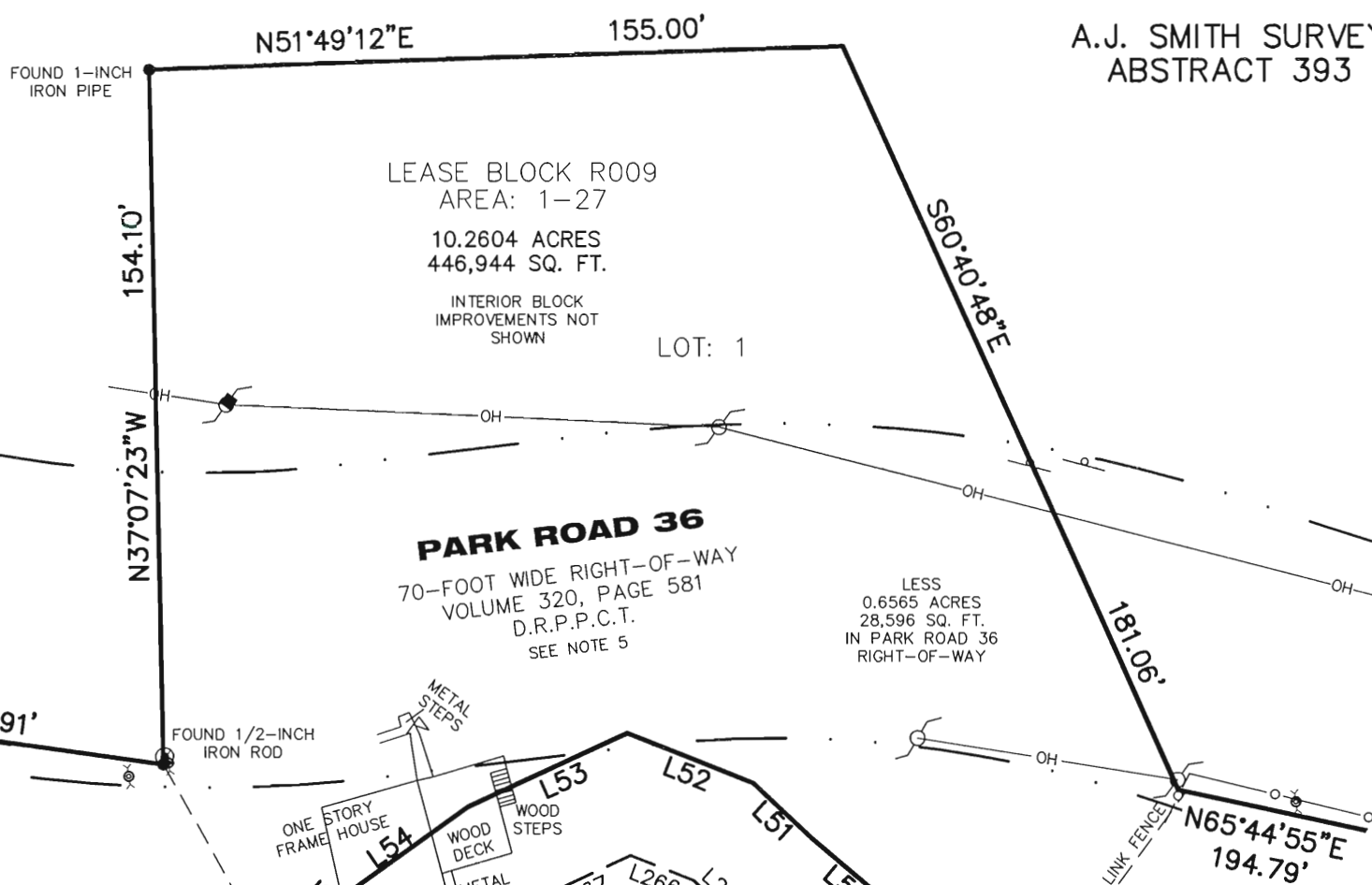
NO PART OR PARTS OF THIS DRAWING MAY BE REPRODUCED OR RETRANSMITTED IN ANY WAY OR FORM (ELECTRONIC, MECHANICAL, PHOTOCOPYING, OR OTHERWISE) WITHOUT THE EXPRESS WRITTEN PERMISSION OF AECOM.

S:\Survcom\Projects\60102581\3.0 Ref Docs\Drafting\Undeveloped Strips\Blocks\R009\60052528 R009By.dwg 7/17/2010 1:17:27 PM CDT

A.J. SMITH SURVEY
ABSTRACT 393



- LEGEND
- = LEASE CORNER MARKER "AS NOTED"
 - ⊕ = POST
 - OH = OVERHEAD LINES
 - = POWER POLE
 - ⊙ = WATER METER
 - ⊖ = WATER VALVE
 - ⊗ = IRRIGATION VALVE
 - ⊠ = ELECTRIC BOX
 - ⊕ = CLEAN OUT



THE BRAZOS RIVER CONSERVATION
AND RECLAMATION DISTRICT
TRACT 3-1-94
VOLUME 182, PAGE 142
D.R.P.P.C.T.

LEASE BLOCK R009
AREA: 1-27
10.2604 ACRES
446,944 SQ. FT.
INTERIOR BLOCK
IMPROVEMENTS NOT
SHOWN

PARK ROAD 36
70-FOOT WIDE RIGHT-OF-WAY
VOLUME 320, PAGE 581
D.R.P.P.C.T.
SEE NOTE 5

LESS
0.6565 ACRES
28,596 SQ. FT.
IN PARK ROAD 36
RIGHT-OF-WAY

F.E.R.C. BUFFER AREA
2.2415 ACRES
97,639 SQ. FT.

STANDARD LAND SURVEY
OF
12.5019 ACRES
SITUATED IN TRACT 3-1-94
AREA 1-26, LOTS 1 - 18
AREA 1-27, LOTS 1 - 6
POSSUM KINGDOM LAKE
A.J. SMITH SURVEY, ABSTRACT 393
PALO PINTO COUNTY, TEXAS

POSSUM KINGDOM LAKE

THE BRAZOS RIVER CONSERVATION
AND RECLAMATION DISTRICT
TRACT 3-1-94
VOLUME 182, PAGE 142
D.R.P.P.C.T.

REVISED: 07/08/10
REVISED: 06/11/10
REVISED: 06/09/10
REVISED: 05/21/10 SHEET 5 OF 10

AECOM	AECOM USA GROUP, INC. 1200 SUMMIT AVENUE, SUITE 600 FORT WORTH, TEXAS 76102 WWW.AECOM.COM 817.698.6770	
	Date: 12/17/09	Project No. 60102581.02

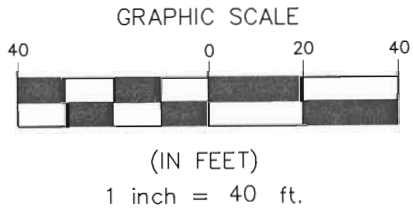
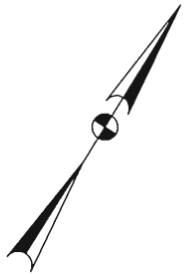
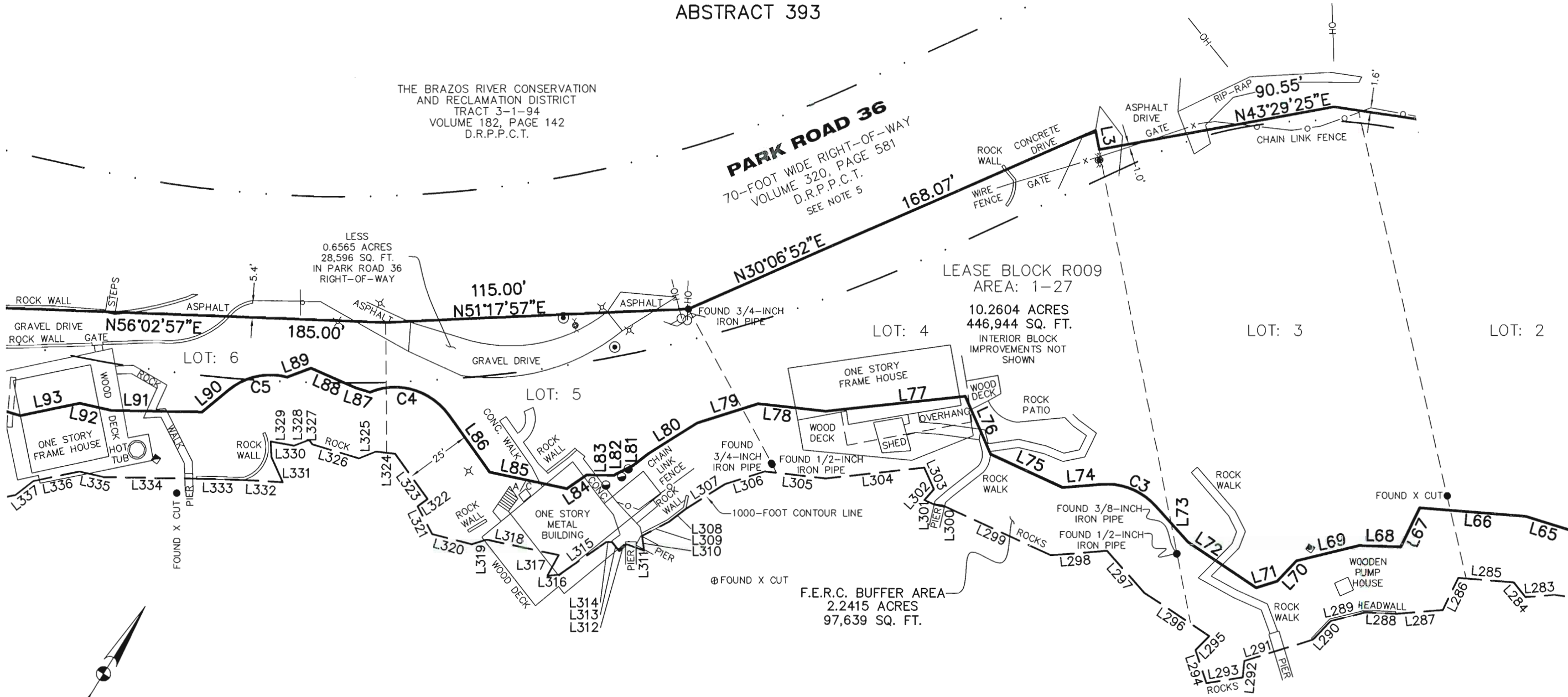
NO PART OR PARTS OF THIS DRAWING MAY BE REPRODUCED OR RETRANSMITTED IN ANY FORM (ELECTRONIC, MECHANICAL, PHOTOCOPYING, OR OTHERWISE) WITHOUT THE EXPRESS WRITTEN PERMISSION OF AECOM.

S:\Survey\Projects\60102581\3.0 Ref Docs\Drafting\Undeveloped Strips\Blocks\R009\60052528 R009ByR2.dwg 7/7/2010 1:17:27 PM CDT

**A.J. SMITH SURVEY
ABSTRACT 393**

THE BRAZOS RIVER CONSERVATION
AND RECLAMATION DISTRICT
TRACT 3-1-94
VOLUME 182, PAGE 142
D.R.P.P.C.T.

PARK ROAD 36
70-FOOT WIDE RIGHT-OF-WAY
VOLUME 320, PAGE 581
D.R.P.P.C.T.
SEE NOTE 5



POSSUM KINGDOM LAKE

THE BRAZOS RIVER CONSERVATION
AND RECLAMATION DISTRICT
TRACT 3-1-94
VOLUME 182, PAGE 142
D.R.P.P.C.T.

- LEGEND**
- = LEASE CORNER MARKER "AS NOTED"
 - ⊕ = POST
 - OH = OVERHEAD LINES
 - = POWER POLE
 - ⊙ = WATER METER
 - ⊙ = WATER VALVE
 - ⊙ = IRRIGATION VALVE
 - ⊙ = ELECTRIC BOX
 - ⊙ = CLEAN OUT

REVISED: 07/08/10
REVISED: 06/11/10
REVISED: 06/09/10
REVISED: 05/21/10 SHEET 6 OF 10

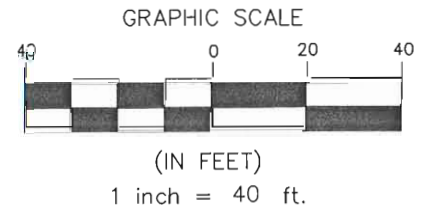
STANDARD LAND SURVEY
OF
12.5019 ACRES
SITUATED IN TRACT 3-1-94
AREA 1-26, LOTS 1 - 18
AREA 1-27, LOTS 1 - 6
POSSUM KINGDOM LAKE
A.J. SMITH SURVEY, ABSTRACT 393
PALO PINTO COUNTY, TEXAS

AECOM	AECOM USA GROUP, INC. 1200 SUMMIT AVENUE, SUITE 600 FORT WORTH, TEXAS 76102 WWW.AECOM.COM 817.698.6770		
	Date: 12/17/09	Project No. 60102581.02	60052528 R009By.dwg

NO PART OR PARTS OF THIS DRAWING MAY BE REPRODUCED OR RETRANSMITTED IN ANY WAY OR FORM (ELECTRONIC, MECHANICAL, PHOTOCOPYING, OR OTHERWISE) WITHOUT THE EXPRESS WRITTEN PERMISSION OF AECOM.

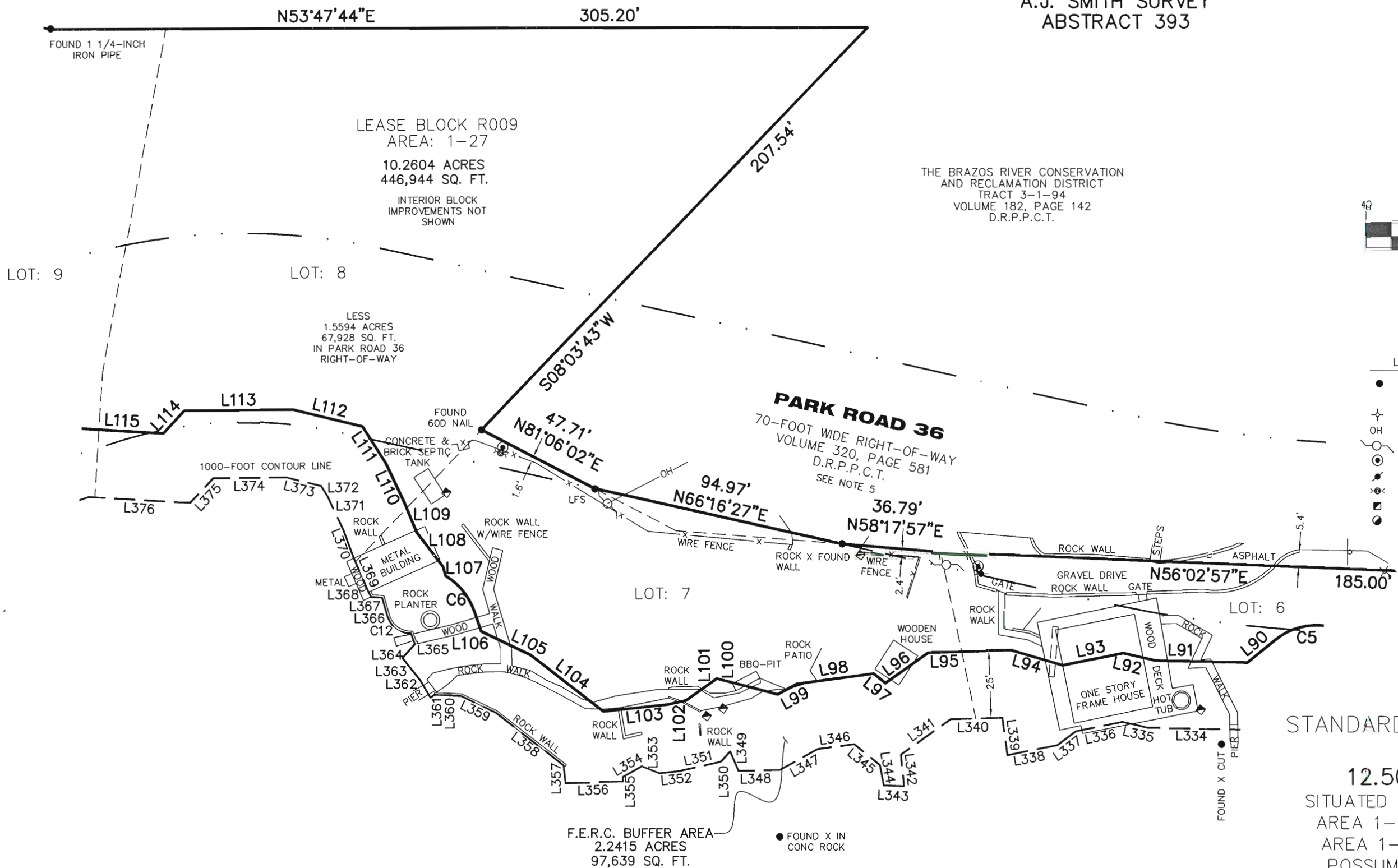
S:\Survcon\Projects\60102581\3.0 Ref Docs\Drafting\Undeveloped Strips\Blocks\R009\60052528 R009ByR2.dwg 7/7/2010 1:17:27 PM CDT

A.J. SMITH SURVEY
ABSTRACT 393



LEGEND

- = LEASE CORNER MARKER "AS NOTED"
- ⊕ = POST
- OH = OVERHEAD LINES
- = POWER POLE
- ⊙ = WATER METER
- ⊕ = WATER VALVE
- ⊗ = IRRIGATION VALVE
- ⊞ = ELECTRIC BOX
- ⊘ = CLEAN OUT



STANDARD LAND SURVEY
OF
12.5019 ACRES
SITUATED IN TRACT 3-1-94
AREA 1-26, LOTS 1 - 18
AREA 1-27, LOTS 1 - 6
POSSUM KINGDOM LAKE
A.J. SMITH SURVEY, ABSTRACT 393
PALO PINTO COUNTY, TEXAS

POSSUM KINGDOM LAKE

THE BRAZOS RIVER CONSERVATION
AND RECLAMATION DISTRICT
TRACT 3-1-94
VOLUME 182, PAGE 142
D.R.P.P.C.T.

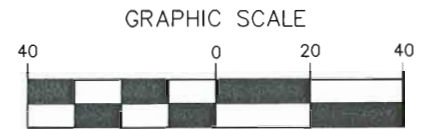
THE BRAZOS RIVER CONSERVATION
AND RECLAMATION DISTRICT
TRACT 3-1-94
VOLUME 182, PAGE 142
D.R.P.P.C.T.

F.E.R.C. BUFFER AREA
2.2415 ACRES
97,639 SQ. FT.

AECOM	AECOM USA GROUP, INC. 1200 SUMMIT AVENUE, SUITE 600 FORT WORTH, TEXAS 76102 WWW.AECOM.COM 817.698.6770		
	REVISOR: 07/08/10 REVISOR: 06/11/10 REVISOR: 06/09/10 REVISOR: 05/21/10	SHEET 7 OF 10	Date: 12/17/09 Project No. 60102581.02

THE BRAZOS RIVER CONSERVATION
AND RECLAMATION DISTRICT
TRACT 3-1-94
VOLUME 182, PAGE 142
D.R.P.P.C.T.

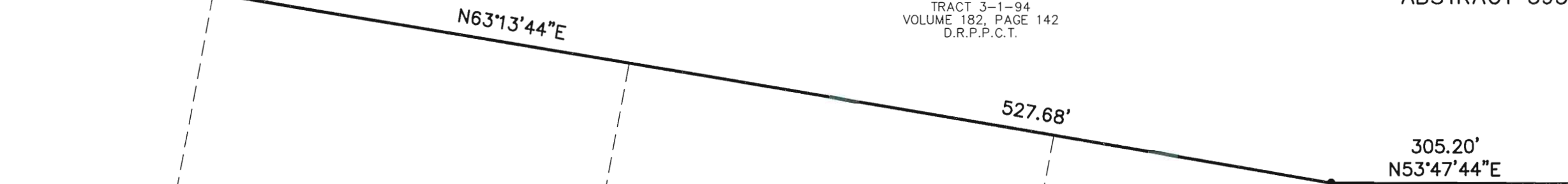
A.J. SMITH SURVEY
ABSTRACT 393



(IN FEET)
1 inch = 40 ft.

LEGEND

- = LEASE CORNER MARKER "AS NOTED"
- ⊕ = POST
- OH = OVERHEAD LINES
- = POWER POLE
- ⊙ = WATER METER
- ⊛ = WATER VALVE
- ⊗ = IRRIGATION VALVE
- ⊠ = ELECTRIC BOX
- ⊙ = CLEAN OUT

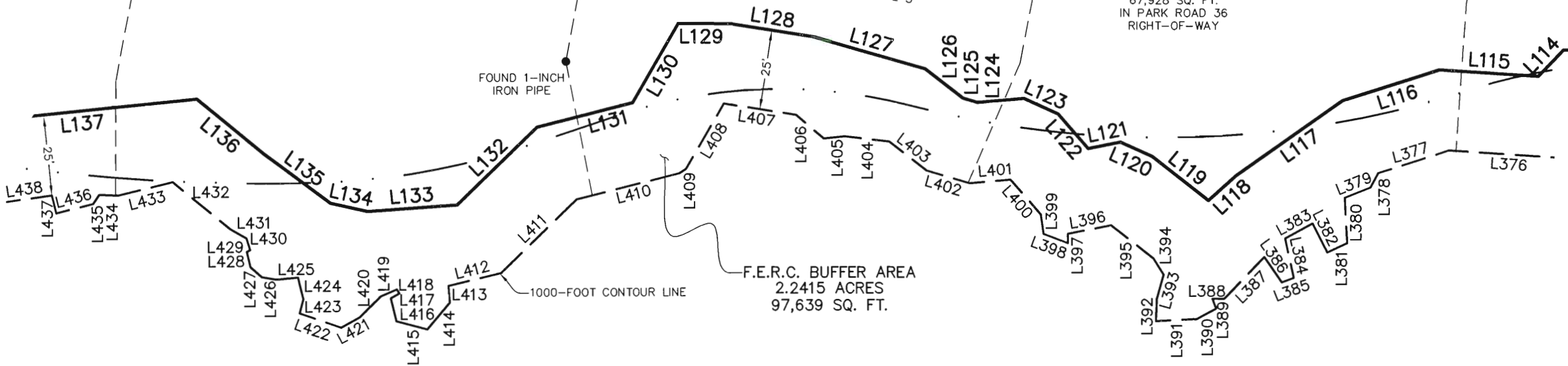


LEASE BLOCK R009
AREA: 1-27
10.2604 ACRES
446,944 SQ. FT.
INTERIOR BLOCK
IMPROVEMENTS NOT
SHOWN

LOT: 12 LOT: 11 LOT: 10 LOT: 9 LOT: 8

PARK ROAD 36
70-FOOT WIDE RIGHT-OF-WAY
VOLUME 320, PAGE 581
D.R.P.P.C.T.
SEE NOTE 5

LESS
1.5594 ACRES
67,928 SQ. FT.
IN PARK ROAD 36
RIGHT-OF-WAY



F.E.R.C. BUFFER AREA
2.2415 ACRES
97,639 SQ. FT.

STANDARD LAND SURVEY
OF
12.5019 ACRES
SITUATED IN TRACT 3-1-94
AREA 1-26, LOTS 1 - 18
AREA 1-27, LOTS 1 - 6
POSSUM KINGDOM LAKE
A.J. SMITH SURVEY, ABSTRACT 393
PALO PINTO COUNTY, TEXAS

POSSUM KINGDOM LAKE

THE BRAZOS RIVER CONSERVATION
AND RECLAMATION DISTRICT
TRACT 3-1-94
VOLUME 182, PAGE 142
D.R.P.P.C.T.

AECOM

AECOM USA GROUP, INC.
1200 SUMMIT AVENUE, SUITE 600
FORT WORTH, TEXAS 76102
WWW.AECOM.COM
817.698.6770

REVISED: 07/08/10
REVISED: 06/11/10
REVISED: 06/09/10
REVISED: 05/21/10 SHEET 8 OF 10

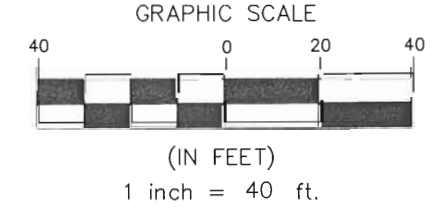
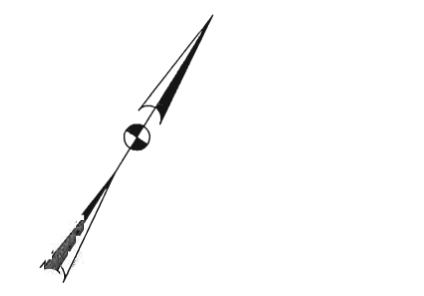
Date: 12/17/09

Project No. 60102581.02

60052528
R009By.dwg

THE BRAZOS RIVER CONSERVATION
AND RECLAMATION DISTRICT
TRACT 3-1-94
VOLUME 182, PAGE 142
D.R.P.P.C.T.

A.J. SMITH SURVEY
ABSTRACT 393



- LEGEND
- = LEASE CORNER MARKER "AS NOTED"
 - ⊕ = POST
 - OH = OVERHEAD LINES
 - ⊙ = POWER POLE
 - ⊙ = WATER METER
 - ⊙ = WATER VALVE
 - ⊙ = IRRIGATION VALVE
 - ⊙ = ELECTRIC BOX
 - ⊙ = CLEAN OUT

FOUND 3/8-INCH IRON ROD
N59°22'37"E 109.71'
FOUND 1/2-INCH IRON ROD
N52°59'37"E 139.25'
L2
FOUND 1 1/4-INCH IRON PIPE
N63°13'44"E 527.68'

LEASE BLOCK R009
AREA: 1-27
10.2604 ACRES
446,944 SQ. FT.
INTERIOR BLOCK
IMPROVEMENTS NOT
SHOWN

LOT: 14

LOT: 13

LOT: 12

LOT: 11

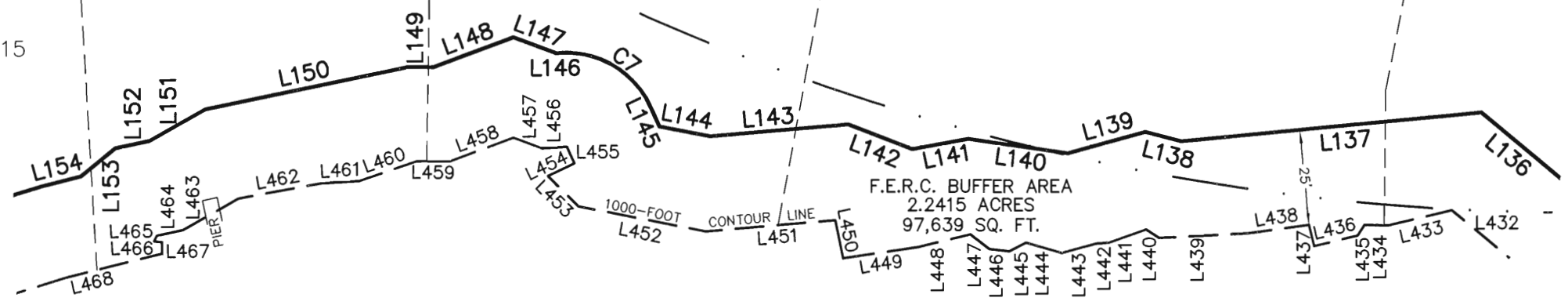
ROCK WALL
CURB & GUTTER

LESS
1.5594 ACRES
67,928 SQ. FT.
IN PARK ROAD 36
RIGHT-OF-WAY

PARK ROAD 36
70-FOOT WIDE RIGHT-OF-WAY
VOLUME 320, PAGE 581
D.R.P.P.C.T.
SEE NOTE 5

ASPHALT
LFS

LOT: 15



F.E.R.C. BUFFER AREA
2.2415 ACRES
97,639 SQ. FT.

STANDARD LAND SURVEY
OF
12.5019 ACRES
SITUATED IN TRACT 3-1-94
AREA 1-26, LOTS 1 - 18
AREA 1-27, LOTS 1 - 6
POSSUM KINGDOM LAKE
A.J. SMITH SURVEY, ABSTRACT 393
PALO FINO COUNTY, TEXAS

POSSUM KINGDOM LAKE

THE BRAZOS RIVER CONSERVATION
AND RECLAMATION DISTRICT
TRACT 3-1-94
VOLUME 182, PAGE 142
D.R.P.P.C.T.

AECOM

AECOM USA GROUP, INC.
1200 SUMMIT AVENUE, SUITE 600
FORT WORTH, TEXAS 76102
WWW.AECOM.COM
817.698.6770

REVISED: 07/08/10
REVISED: 06/11/10
REVISED: 06/09/10
REVISED: 05/21/10 SHEET 9 OF 10

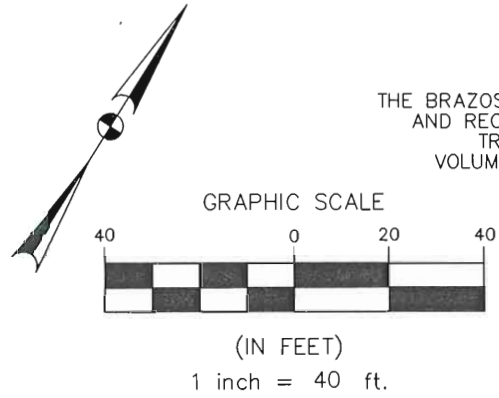
Date: 12/17/09 Project No. 60102581.02 60052528 R009By.dwg

NO PART OR PARTS OF THIS DRAWING MAY BE REPRODUCED OR TRANSMITTED IN ANY WAY OR FORM (ELECTRONIC, MECHANICAL, PHOTOCOPYING, OR OTHERWISE) WITHOUT THE EXPRESS WRITTEN PERMISSION OF AECOM.

S:\Survey\Projects\60102581\3.0 Ref Docs\Drafting\Undeveloped Strips\Blocks\R009\60052528 R009ByR2.dwg 7/7/2010 1:17:27 PM CDT

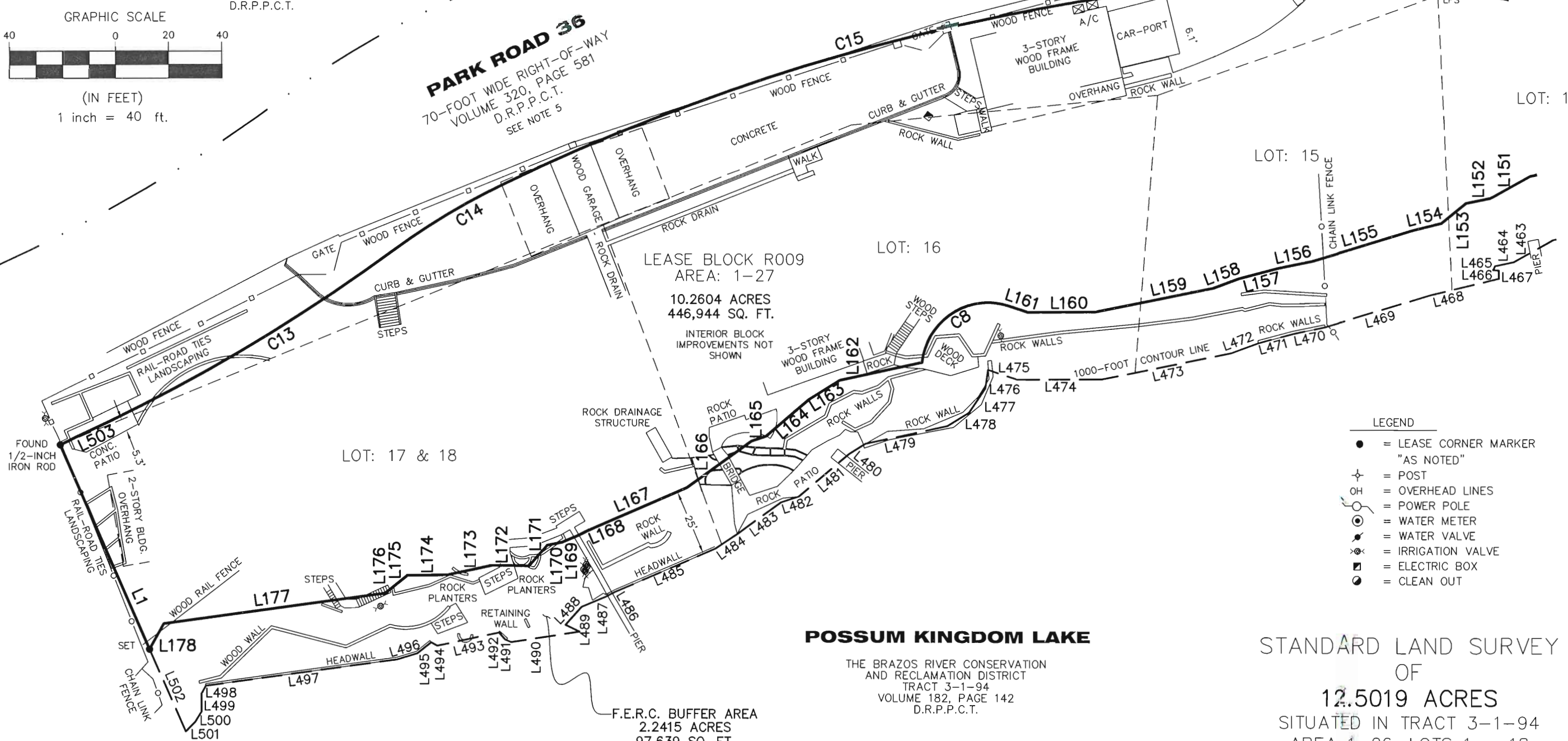
A.J. SMITH SURVEY. ABSTRACT 393

THE BRAZOS RIVER CONSERVATION
AND RECLAMATION DISTRICT
TRACT 3-1-94
VOLUME 182, PAGE 142
D.R.P.P.C.T.



PARK ROAD 36
70-FOOT WIDE RIGHT-OF-WAY
VOLUME 320, PAGE 581
D.R.P.P.C.T.
SEE NOTE 5

LESS
1.5594 ACRES
67,928 SQ. FT.
IN PARK ROAD 36
RIGHT-OF-WAY



- LEGEND
- = LEASE CORNER MARKER "AS NOTED"
 - ⊕ = POST
 - OH = OVERHEAD LINES
 - ⊙ = POWER POLE
 - ⊙ = WATER METER
 - ⊙ = WATER VALVE
 - ⊙ = IRRIGATION VALVE
 - ⊙ = ELECTRIC BOX
 - ⊙ = CLEAN OUT

POSSUM KINGDOM LAKE

THE BRAZOS RIVER CONSERVATION
AND RECLAMATION DISTRICT
TRACT 3-1-94
VOLUME 182, PAGE 142
D.R.P.P.C.T.

F.E.R.C. BUFFER AREA
2.2415 ACRES
97,639 SQ. FT.

STANDARD LAND SURVEY
OF
12.5019 ACRES
SITUATED IN TRACT 3-1-94
AREA 1-26, LOTS 1 - 18
AREA 1-27, LOTS 1 - 6
POSSUM KINGDOM LAKE
A.J. SMITH SURVEY, ABSTRACT 393
PALO PINTO COUNTY, TEXAS

AECOM

AECOM USA GROUP, INC.
1200 SUMMIT AVENUE, SUITE 600
FORT WORTH, TEXAS 76102
WWW.AECOM.COM
817.698.6770

REVISED: 07/08/10
REVISED: 06/11/10
REVISED: 06/09/10
REVISED: 05/21/10

SHEET 10 OF 10

Date: 12/17/09

Project No. 60102581.02

60052528
R009By.dwg

NO PART OR PARTS OF THIS DRAWING MAY BE REPRODUCED OR TRANSMITTED IN ANY WAY OR FORM (ELECTRONIC, MECHANICAL, PHOTOCOPYING, OR OTHERWISE) WITHOUT THE EXPRESS WRITTEN PERMISSION OF AECOM.

S:\Suncon\Projects\60102581\3.0 Ref Docs\Drafting\Undeveloped Strips\Blocks\R009\60052528 R009By.dwg 7/7/2010 1:17:27 PM GDT