

VICINITY MAP NOT TO SCALE

CURVE TABLE					
CURVE	LENGTH	DELTA	RADIUS	CHORD BEARING	CHORD
C1	59.27'	135°50'52"	25.00'	S21°01'05"W	46.33'
C2	12.99'	29°46'46"	25.00'	S24°58'35"E	12.85'
C3	16.95'	38°51'21"	25.00'	S07°32'20"E	16.63'
C4	19.33'	44°18'41"	25.00'	S52°03'07"W	18.86'
C5	58.84'	41°19'05"	81.59'	N34°54'56"E	57.57'
C6	98.29'	07°11'40"	782.79'	N44°10'07"E	98.23'
C7	193.40'	14°09'20"	782.79'	N14°51'39"E	192.90'
C8	40.35'	00°57'18"	2420.71'	N06°12'13"E	40.35'

ACREAGE TABLE	
LEASE BLOCK:	3.4596 ACRES
F.E.R.C. BUFFER AREA:	0.8302 OF ONE ACRE
SURVEY BLOCK:	4.2898 ACRES TOTAL

LINE TABLE		
LINE	BEARING	DISTANCE
L1	S45°43'51"E	13.61'
L2	S46°54'22"E	11.38'
L3	S07°57'14"E	8.74'
L4	S12°26'14"W	16.73'
L5	S06°22'30"W	16.96'
L6	S10°05'12"E	17.84'
L7	S52°52'44"W	9.20'
L8	S81°42'58"W	41.73'
L9	N58°21'05"E	11.73'
L10	S44°28'06"W	15.81'
L11	S16°16'14"W	18.84'
L12	S01°32'35"W	5.30'
L13	S33°29'42"W	22.43'
L14	S36°35'50"W	36.94'
L15	S46°43'06"W	10.45'
L16	S36°57'23"W	8.96'
L17	S48°51'30"W	4.90'
L18	S75°52'53"W	15.38'
L19	S33°24'42"W	33.56'
L20	S25°34'25"W	23.89'
L21	S23°57'24"W	4.88'
L22	S23°09'07"W	15.12'
L23	S11°17'45"W	14.92'
L24	S32°29'24"W	12.73'
L25	S11°53'21"W	12.90'
L26	S19°11'30"W	20.86'
L27	S20°02'27"W	4.72'
L28	S20°20'18"W	17.14'
L29	S29°53'46"W	9.77'
L30	S25°22'24"W	26.67'
L31	S22°29'50"W	22.42'
L32	S15°55'33"W	3.51'
L33	S27°36'30"W	31.73'
L34	S26°49'10"W	18.38'
L35	S14°54'01"W	5.79'

LINE TABLE		
LINE	BEARING	DISTANCE
L36	S26°43'18"W	13.43'
L37	S38°05'30"W	7.45'
L38	S55°38'49"W	3.72'
L39	S62°37'39"W	9.71'
L40	S85°51'09"W	9.78'
L41	S56°43'15"W	37.95'
L42	S10°28'16"E	32.39'
L43	S02°27'28"W	4.86'
L44	S31°14'16"W	0.12'
L45	S24°52'22"W	23.46'
L46	S13°09'28"W	20.36'
L47	S04°14'58"W	39.85'
L48	S05°52'16"W	21.66'
L49	S02°53'00"E	26.42'
L50	S14°21'47"E	21.47'
L51	S22°38'11"E	22.34'
L52	S05°35'16"E	21.97'
L53	S06°11'02"W	5.77'
L54	S08°24'48"E	10.12'
L55	S40°39'11"W	3.93'
L56	S15°32'42"W	3.78'
L57	S77°40'15"W	4.00'
L58	S72°09'07"W	16.14'
L59	S55°09'13"W	25.86'
L60	S78°47'45"W	15.19'
L61	S73°04'48"W	20.95'
L62	S62°14'27"W	8.97'
L63	S86°41'36"W	31.91'
L64	S79°20'31"W	19.78'
L65	N75°01'40"W	5.84'
L66	S86°49'24"W	26.13'
L67	S86°26'43"W	27.57'
L68	S84°18'43"W	24.97'
L69	N75°27'34"W	15.01'
L70	S68°19'10"W	15.92'

LINE TABLE		
LINE	BEARING	DISTANCE
L71	S76°44'02"W	41.56'
L72	S69°11'24"W	19.41'
L73	S76°21'36"W	33.33'
L74	S59°51'52"W	44.38'
L75	S43°52'37"W	21.20'
L76	S84°18'24"W	7.91'
L77	N80°48'59"W	7.38'
L78	N61°15'41"W	15.78'
L79	N80°25'32"W	22.05'
L80	N74°17'06"W	15.46'
L81	S88°56'31"W	21.06'
L82	N24°16'37"E	3.49'
L83	N55°34'28"E	18.83'
L84	N55°34'28"E	28.10'
L85	S12°54'16"E	37.85'
L86	S01°32'35"W	5.60'
L87	S33°29'42"W	30.26'
L88	S36°35'50"W	39.83'
L89	S46°43'06"W	10.53'
L90	S36°57'23"W	3.58'
L91	S11°28'37"W	1.99'
L92	S48°51'30"W	17.65'
L93	S75°52'53"W	11.67'
L94	S33°24'42"W	22.14'
L95	S25°34'25"W	21.82'
L96	S23°57'24"W	4.36'
L97	S23°09'07"W	12.35'
L98	S11°17'45"W	17.00'
L99	S32°29'24"W	12.86'
L100	S11°53'21"W	8.36'
L101	S63°01'29"E	7.75'
L102	S19°11'30"W	38.03'
L103	S20°02'27"W	4.97'
L104	S20°20'18"W	32.52'
L105	S84°54'21"W	11.36'

LINE TABLE		
LINE	BEARING	DISTANCE
L106	S29°53'46"W	8.78'
L107	S25°22'24"W	25.06'
L108	S22°29'50"W	20.35'
L109	S15°55'33"W	4.63'
L110	S27°36'30"W	34.12'
L111	S26°49'10"W	15.59'
L112	S14°54'01"W	5.77'
L113	S26°43'18"W	18.50'
L114	S38°05'30"W	13.80'
L115	S55°38'49"W	9.10'
L116	S62°37'39"W	16.37'
L117	S85°51'09"W	8.43'
L118	S56°43'15"W	14.85'
L119	S10°28'16"E	18.61'
L120	S02°27'28"W	14.11'
L121	S31°14'16"W	5.15'
L122	S24°52'22"W	19.50'
L123	S13°09'28"W	15.85'
L124	S04°14'58"W	38.26'
L125	S05°52'16"W	20.10'
L126	S02°53'00"E	22.06'
L127	S14°21'47"E	17.15'
L128	S22°38'11"E	17.08'
L129	S88°43'53"E	5.59'
L130	S30°53'35"W	5.79'
L131	S05°35'16"E	29.85'
L132	S06°11'02"W	5.14'
L133	S08°24'48"E	18.33'
L134	S40°39'11"W	9.77'
L135	S15°32'42"W	13.28'
L136	S77°40'15"W	17.85'
L137	S72°09'07"W	11.20'
L138	S55°09'13"W	27.36'
L139	S78°47'45"W	19.17'
L140	S73°04'48"W	17.33'

LINE TABLE		
LINE	BEARING	DISTANCE
L141	S62°14'27"W	12.01'
L142	S86°41'36"W	35.72'
L143	S79°20'31"W	23.86'
L144	N75°01'40"W	7.53'
L145	S86°49'24"W	22.06'
L146	S86°26'43"W	20.73'
L147	S56°13'42"W	15.62'
L148	N46°46'48"W	9.82'
L149	S85°19'01"W	15.22'
L150	N75°27'34"W	11.06'
L151	S68°19'10"W	9.58'
L152	S76°44'02"W	41.75'
L153	S69°11'24"W	19.32'
L154	S76°21'36"W	31.28'
L155	S59°51'52"W	37.25'
L156	S43°52'37"W	23.22'
L157	S54°07'53"W	4.74'
L158	S84°18'24"W	19.08'
L159	N80°48'59"W	14.95'
L160	N61°15'41"W	15.87'
L161	N80°25'32"W	19.17'
L162	N74°17'06"W	13.12'
L163	S88°56'31"W	17.38'
L164	S45°45'08"E	13.86'
L165	S46°54'22"E	14.27'
L166	S81°42'52"E	12.59'
L167	S45°21'38"E	4.20'
L168	S27°42'54"W	18.96'
L169	S07°57'14"E	4.26'
L170	S12°26'14"W	19.90'
L171	S06°22'30"W	12.02'
L172	S10°05'12"E	14.22'
L173	N72°40'29"E	3.54'
L174	S52°52'44"W	28.30'
L175	N53°28'20"E	104.02'

NOTES:

- 1) BEARINGS AND COORDINATES SHOWN HEREON ARE BASED ON THE NORTH AMERICAN DATUM OF 1983, TEXAS COORDINATE SYSTEM, NORTH CENTRAL ZONE (4202).
- 2) 1,000-FOOT CONTOUR ELEVATION OF POSSUM KINGDOM LAKE IS DETERMINED BASED ON MEASUREMENTS FROM THE TOP OF THE EXISTING SPILLWAY CREST GATES AT THE MORRIS SHEPPARD DAM BEING AT ELEVATION 1,000- FEET ABOVE MEAN SEA LEVEL AS NOTED IN FEDERAL POWER COMMISSION REPORT PROJECT NO. 1490 - TEXAS ON JUNE 2, 1938.
- 3) SET = 5/8" IRON ROD W/CAP STAMPED "AECOM" SET; D.R.P.P.C.T.= DEED RECORDS, PALO PINTO COUNTY, TEXAS; P.R.P.P.C.T.= PLAT RECORDS, PALO PINTO COUNTY, TEXAS; F.E.R.C.= FEDERAL ENERGY REGULATORY COMMISSION; J.R.P.P.C.T.= JUDGEMENT RECORDS, PALO PINTO COUNTY, TEXAS, LFS = 5/8" IRON ROD W/CAP STAMPED "LINKFIELD RPLS 5087" FOUND.
- 4) METES AND BOUNDS DESCRIPTIONS TO ACCOMPANY THIS SURVEY.
- 5) PARK ROAD 36 RIGHT-OF-WAY EASEMENT RECORDED IN VOLUME 320, PAGE 581 D.R.P.P.C.T. CALLS TO BE A STRIP OF LAND OF OF VARYING WIDTH. ACCORDING TO GREGG LANE, WITH TXDOT'S WEATHERFORD OFFICE, THE INTENDED WIDTH IS 35- FEET EITHER SIDE OF THE AS BUILT CENTERLINE FOR A TOTAL RIGHT-OF-WAY WIDTH OF 70- FEET.
- 6) LOCATION, POSITION AND GEOMETRY OF ROAD RIGHTS-OF-WAY SHOWN AND DESCRIBED HEREON BASED ON SURVEYS PROVIDED BY LINK FIELD SERVICES, NO DEED OF RECORD HAS BEEN RECORDED AT THIS TIME FOR SAME UNLESS NOTED OTHERWISE.
- 7) IMPROVEMENTS SHOWN HEREON TIED FEBRUARY 2010.

REVISED: 06/09/10
REVISED: 05/21/10 SHEET 1 OF 5

STANDARD LAND SURVEY
OF
4.2898 ACRES
SITUATED IN TRACT 3-1-94
AREA 1-27, LOTS 10 TO 24
POSSUM KINGDOM LAKE
A.J. SMITH SURVEY, ABSTRACT 393
PALO PINTO COUNTY, TEXAS

	AECOM USA GROUP, INC. 1200 SUMMIT AVENUE, SUITE 600 FORT WORTH, TEXAS 76102 WWW.AECOM.COM 817.698.6770	
	Date: 11/25/09	Project No. 60102581.02

60052528
R008By.dwg

SURVEYORS CERTIFICATE

TO: BRAZOS RIVER AUTHORITY, PATTERSON PK LAND PARTNERSHIP, LTD., AND HERITAGE TITLE COMPANY OF AUSTIN, INC.

I, JAMES T. MULLER, A REGISTERED PROFESSIONAL LAND SURVEYOR IN THE STATE OF TEXAS, REGISTRATION NUMBER 4522, HEREBY STATE THAT A SURVEY OF THE REAL PROPERTY DESCRIBED IN SEPARATE LEGAL DESCRIPTION AS NOTED HEREON, WAS ACTUALLY MADE UPON THE GROUND UNDER MY DIRECTION AND SUPERVISION, AND THAT TO THE BEST OF MY PROFESSIONAL KNOWLEDGE AND BELIEF, THE INFORMATION SHOWN HEREON IS CORRECT AS DETERMINED BY SAID SURVEY.

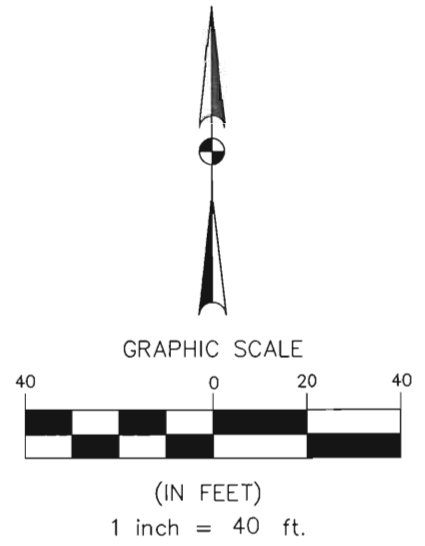
THIS SURVEY SUBSTANTIALLY COMPLIES WITH THE CURRENT TEXAS SOCIETY OF PROFESSIONAL SURVEYORS STANDARDS AND SPECIFICATIONS FOR A CATEGORY 1B, CONDITION II SURVEY.

JAMES T. MULLER
 REGISTERED PROFESSIONAL LAND SURVEYOR
 TEXAS REGISTRATION NO. 4522



DATE: MAY 21, 2010

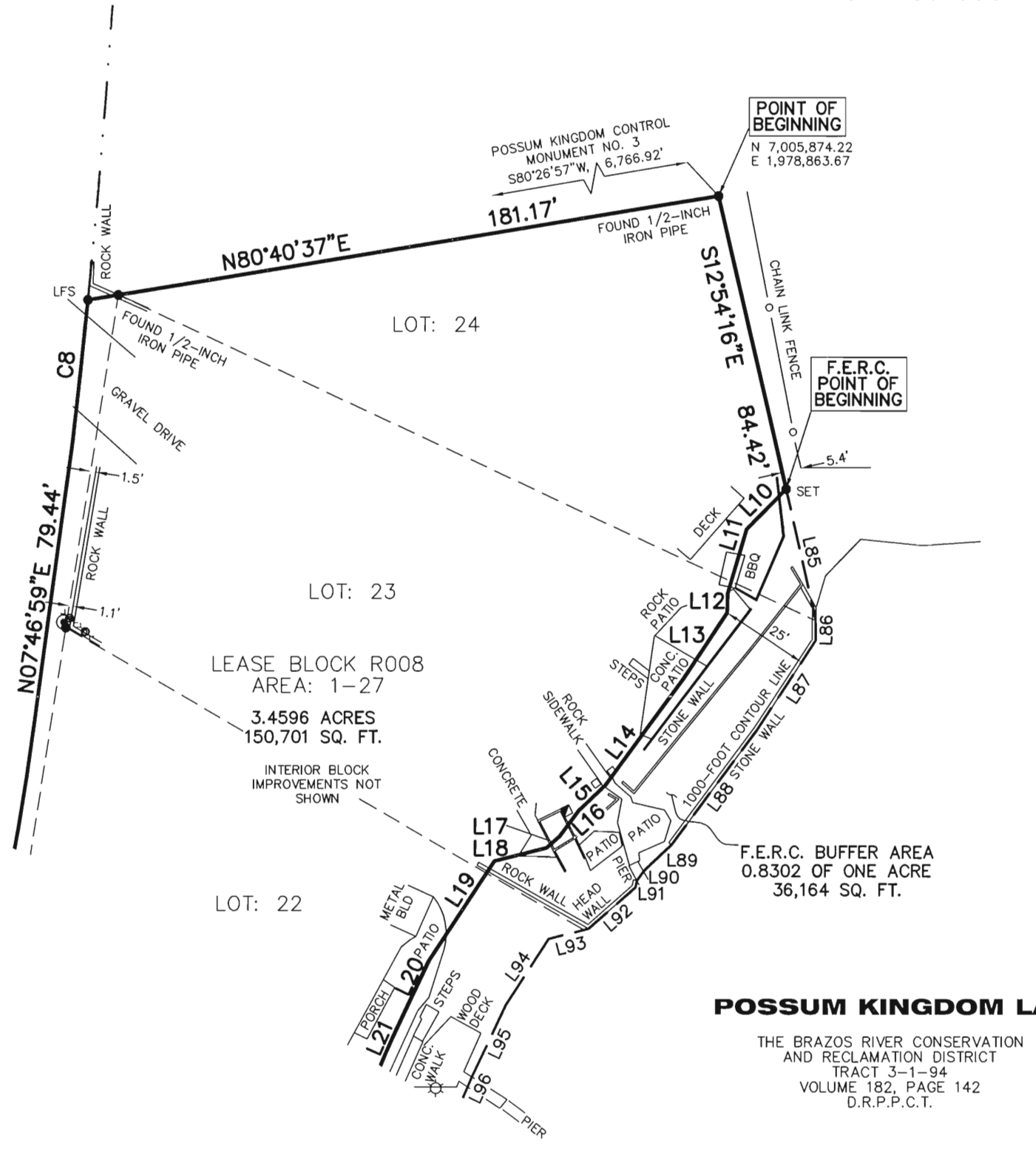
A.J. SMITH SURVEY
ABSTRACT 393



- LEGEND
- = LEASE CORNER MARKER "AS NOTED"
 - ⊕ = POST
 - OH = OVERHEAD LINES
 - ⊙ = POWER POLE
 - ⊙ = WATER METER
 - ⊙ = WATER VALVE
 - ⊙ = IRRIGATION VALVE
 - ⊙ = ELECTRIC BOX
 - ⊙ = CLEAN OUT

PARK ROAD 36
70-FOOT WIDE RIGHT-OF-WAY
VOLUME 320, PAGE 581
D.R.P.P.C.T.
SEE NOTE 5

THE BRAZOS RIVER CONSERVATION
AND RECLAMATION DISTRICT
TRACT 3-1-94
VOLUME 182, PAGE 142
D.R.P.P.C.T.



LEASE BLOCK R008
AREA: 1-27
3.4596 ACRES
150,701 SQ. FT.
INTERIOR BLOCK
IMPROVEMENTS NOT
SHOWN

F.E.R.C. BUFFER AREA
0.8302 OF ONE ACRE
36,164 SQ. FT.

POSSUM KINGDOM LAKE

THE BRAZOS RIVER CONSERVATION
AND RECLAMATION DISTRICT
TRACT 3-1-94
VOLUME 182, PAGE 142
D.R.P.P.C.T.

STANDARD LAND SURVEY
OF
4.2898 ACRES
SITUATED IN TRACT 3-1-94
AREA 1-27, LOTS 10 TO 24
POSSUM KINGDOM LAKE
A.J. SMITH SURVEY, ABSTRACT 393
PALO PINTO COUNTY, TEXAS

AECOM

AECOM USA GROUP, INC.
1200 SUMMIT AVENUE, SUITE 600
FORT WORTH, TEXAS 76102
WWW.AECOM.COM
817.698.6770

REVISED: 06/09/10
REVISED: 05/21/10 SHEET 2 OF 5

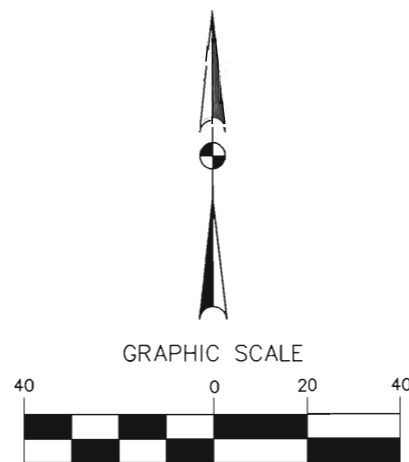
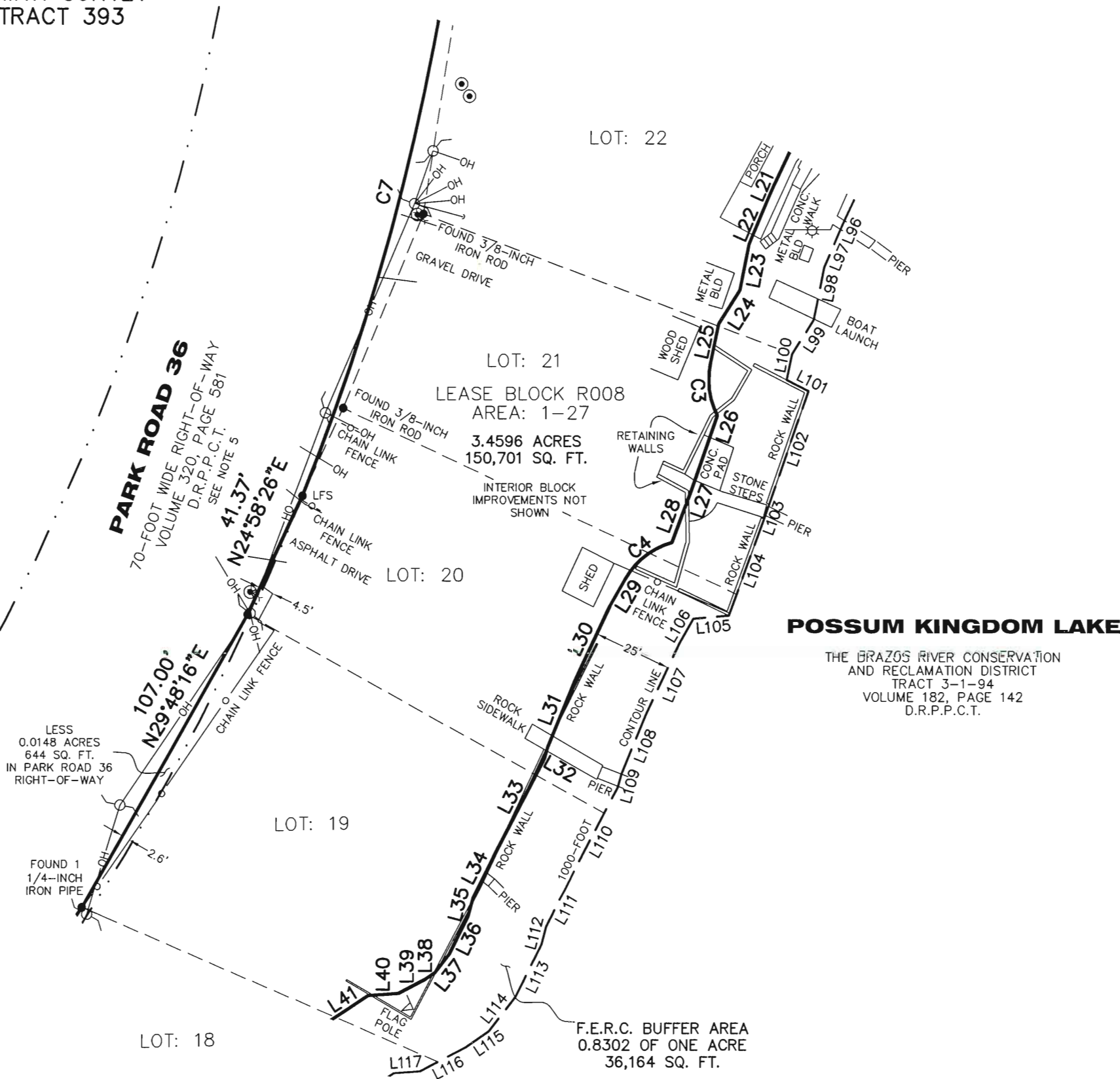
Date: 11/25/09 Project No. 60102581.02 60052528 R008By.dwg

NO PART OR PARTS OF THIS DRAWING MAY BE REPRODUCED OR TRANSMITTED IN ANY WAY OR FORM (ELECTRONIC, MECHANICAL, PHOTOCOPYING, OR OTHERWISE) WITHOUT THE EXPRESS WRITTEN PERMISSION OF AECOM.

S:\Survcom\Projects\60102581\3.0 Ref Does\Drafting\Undeveloped Strips\Blocks\0008\60052528 R008By.dwg 5/14/2010 9:29:30 AM CDT

A.J. SMITH SURVEY
ABSTRACT 393

THE BRAZOS RIVER CONSERVATION
AND RECLAMATION DISTRICT
TRACT 3-1-94
VOLUME 182, PAGE 142
D.R.P.P.C.T.



(IN FEET)
1 inch = 40 ft.

- LEGEND**
- = LEASE CORNER MARKER "AS NOTED"
 - ⊕ = POST
 - OH = OVERHEAD LINES
 - = POWER POLE
 - ⊙ = WATER METER
 - ⊛ = WATER VALVE
 - ⊙ = IRRIGATION VALVE
 - ⊠ = ELECTRIC BOX
 - = CLEAN OUT

POSSUM KINGDOM LAKE

THE BRAZOS RIVER CONSERVATION
AND RECLAMATION DISTRICT
TRACT 3-1-94
VOLUME 182, PAGE 142
D.R.P.P.C.T.

STANDARD LAND SURVEY
OF
4.2898 ACRES
SITUATED IN TRACT 3-1-94
AREA 1-27, LOTS 10 TO 24
POSSUM KINGDOM LAKE
A.J. SMITH SURVEY, ABSTRACT 393
PALO PINTO COUNTY, TEXAS

AECOM	AECOM USA GROUP, INC. 1200 SUMMIT AVENUE, SUITE 600 FORT WORTH, TEXAS 76102 WWW.AECOM.COM 817.698.6770	
	Date: 11/25/09	Project No. 60102581.02

REVISED: 06/09/10
REVISED: 05/21/10 SHEET 3 OF 5

NO PART OR PARTS OF THIS DRAWING MAY BE REPRODUCED OR RETRANSMITTED IN ANY WAY OR FORM (ELECTRONIC, MECHANICAL, PHOTOCOPYING, OR OTHERWISE) WITHOUT THE EXPRESS WRITTEN PERMISSION OF AECOM.

S:\Survey\Projects\60102581\3.0 Ref Docs\Drafting\Undeveloped Strips\Blocks\R008\60052528 R008By.dwg 5/14/2010 9:29:30 AM CDT

A.J. SMITH SURVEY
ABSTRACT 393

THE BRAZOS RIVER CONSERVATION
AND RECLAMATION DISTRICT
TRACT 3-1-94
VOLUME 182, PAGE 142
D.R.P.P.C.T.

PARK ROAD 36
70-FOOT WIDE RIGHT-OF-WAY
VOLUME 320, PAGE 581
D.R.P.P.C.T.
SEE NOTE 5

LOT: 19

LOT: 18

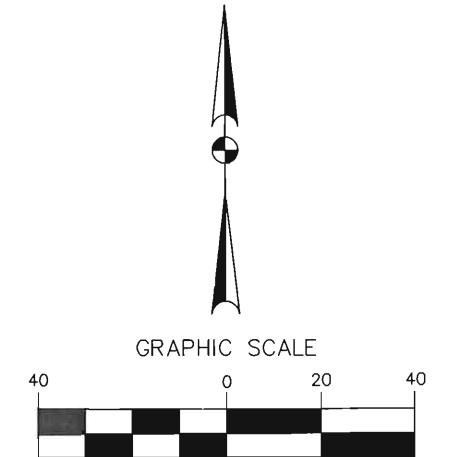
LOT: 17

LEASE BLOCK R008
AREA: 1-27
3.4596 ACRES
150,701 SQ. FT.

LOT: 16

LOT: 15

LOT: 14



(IN FEET)
1 inch = 40 ft.

LEGEND

- = LEASE CORNER MARKER "AS NOTED"
- ⊕ = POST
- OH = OVERHEAD LINES
- = POWER POLE
- ⊙ = WATER METER
- ⊕ = WATER VALVE
- ⊗ = IRRIGATION VALVE
- ⊠ = ELECTRIC BOX
- = CLEAN OUT

POSSUM KINGDOM LAKE

THE BRAZOS RIVER CONSERVATION
AND RECLAMATION DISTRICT
TRACT 3-1-94
VOLUME 182, PAGE 142
D.R.P.P.C.T.

STANDARD LAND SURVEY
OF
4.2898 ACRES
SITUATED IN TRACT 3-1-94
AREA 1-27, LOTS 10 TO 24
POSSUM KINGDOM LAKE
A.J. SMITH SURVEY, ABSTRACT 393
PALO PINTO COUNTY, TEXAS

AECOM

AECOM USA GROUP, INC.
1200 SUMMIT AVENUE, SUITE 600
FORT WORTH, TEXAS 76102
WWW.AECOM.COM
817.698.6770

REVISED: 06/09/10
REVISED: 05/21/10 SHEET 4 OF 5

Date: 11/25/09 Project No. 60102581.02 60052528 R008By.dwg

NO PART OR PARTS OF THIS DRAWING MAY BE REPRODUCED OR TRANSMITTED IN ANY WAY OR FORM (ELECTRONIC, MECHANICAL, PHOTOCOPYING, OR OTHERWISE) WITHOUT THE EXPRESS WRITTEN PERMISSION OF AECOM.

S:\Survey\Projects\60102581\3.0 Ref Docs\Drafting\Undeveloped Strips\Blocks\R008\60052528 R008By.dwg 5/14/2010 9:29:30 AM COT

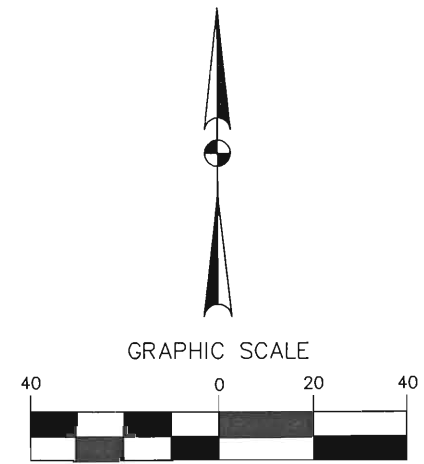
A.J. SMITH SURVEY
ABSTRACT 393

THE BRAZOS RIVER CONSERVATION
AND RECLAMATION DISTRICT
TRACT 3-1-94
VOLUME 182, PAGE 142
D.R.P.P.C.T.

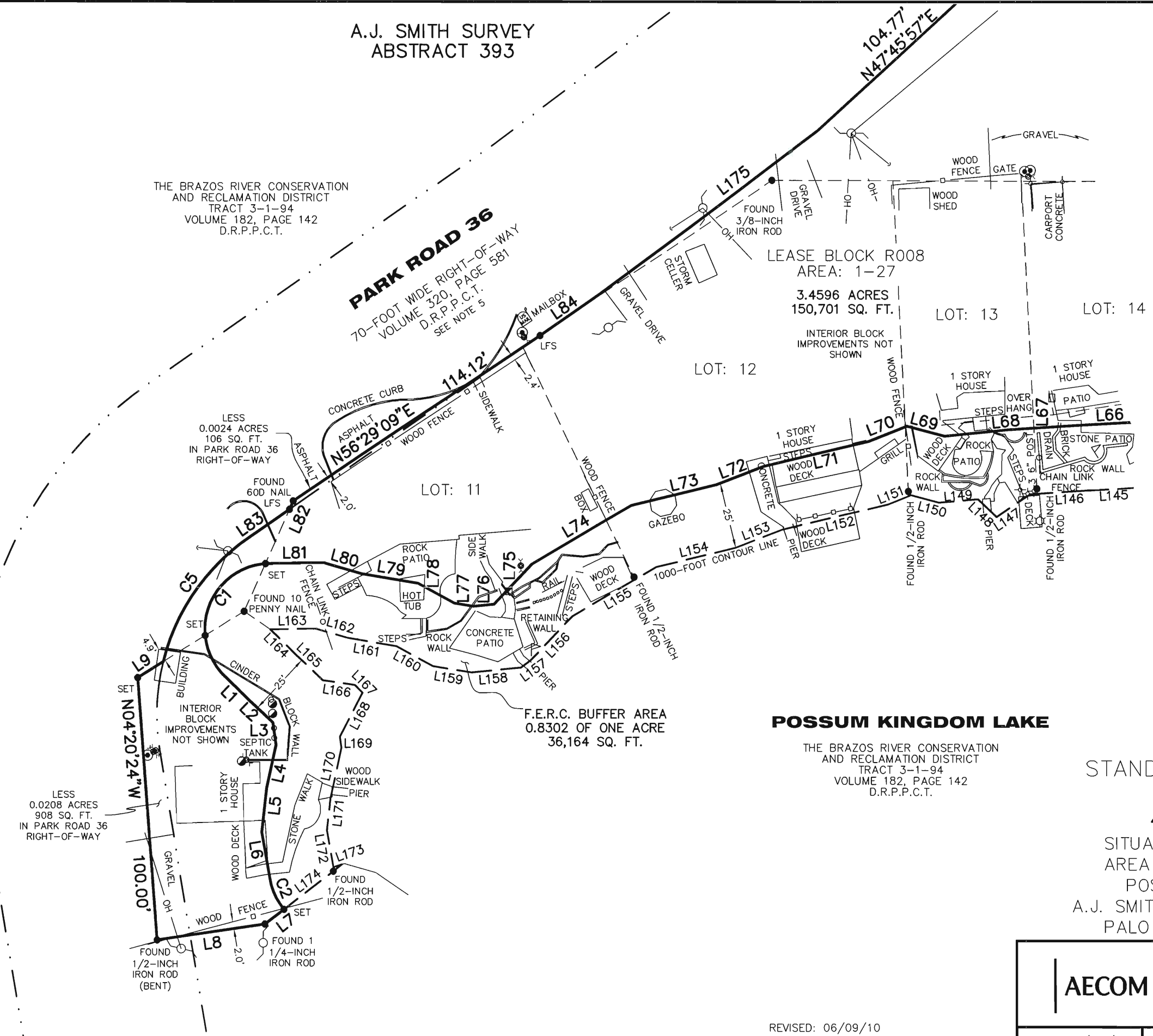
PARK ROAD 36
70-FOOT WIDE RIGHT-OF-WAY
VOLUME 320, PAGE 581
D.R.P.P.C.T.
SEE NOTE 5

LEASE BLOCK R008
AREA: 1-27
3.4596 ACRES
150,701 SQ. FT.

INTERIOR BLOCK
IMPROVEMENTS NOT
SHOWN



- LEGEND
- = LEASE CORNER MARKER "AS NOTED"
 - ⊕ = POST
 - OH = OVERHEAD LINES
 - = POWER POLE
 - ⊙ = WATER METER
 - ⊕ = WATER VALVE
 - ⊕ = IRRIGATION VALVE
 - ⊕ = ELECTRIC BOX
 - = CLEAN OUT



POSSUM KINGDOM LAKE

THE BRAZOS RIVER CONSERVATION
AND RECLAMATION DISTRICT
TRACT 3-1-94
VOLUME 182, PAGE 142
D.R.P.P.C.T.

STANDARD LAND SURVEY
OF
4.2898 ACRES
SITUATED IN TRACT 3-1-94
AREA 1-27, LOTS 10 TO 24
POSSUM KINGDOM LAKE
A.J. SMITH SURVEY, ABSTRACT 393
PALO PINTO COUNTY, TEXAS

AECOM	AECOM USA GROUP, INC. 1200 SUMMIT AVENUE, SUITE 600 FORT WORTH, TEXAS 76102 WWW.AECOM.COM 817.698.6770	
	Date: 11/25/09	Project No. 60102581.02

REVISED: 06/09/10
REVISED: 05/21/10 SHEET 5 OF 5

NO PART OR PARTS OF THIS DRAWING MAY BE REPRODUCED OR TRANSMITTED IN ANY WAY OR FORM (ELECTRONIC, MECHANICAL, PHOTOCOPYING, OR OTHERWISE) WITHOUT THE EXPRESS WRITTEN PERMISSION OF AECOM.

S:\Surcon\Projects\60102581\3.0 Ref Docs\Drafting\Undeveloped Strips\Blocks\R008\60052528 R008B\R1.dwg 5/14/2010 9:29:30 AM COT