

VICINITY MAP  
NOT TO SCALE

NOTES:

- 1) BEARINGS AND COORDINATES SHOWN HEREON ARE BASED ON THE NORTH AMERICAN DATUM OF 1983, TEXAS COORDINATE SYSTEM, NORTH CENTRAL ZONE (4202).
- 2) 1,000-FOOT CONTOUR ELEVATION OF POSSUM KINGDOM LAKE IS DETERMINED BASED ON MEASUREMENTS FROM THE TOP OF THE EXISTING SPILLWAY CREST GATES AT THE MORRIS SHEPPARD DAM BEING AT ELEVATION 1,000- FEET ABOVE MEAN SEA LEVEL AS NOTED IN FEDERAL POWER COMMISSION REPORT PROJECT NO. 1490 - TEXAS ON JUNE 2, 1938.
- 3) SET = 5/8" IRON ROD W/CAP STAMPED "AECOM" SET; D.R.P.P.C.T.= DEED RECORDS, PALO PINTO COUNTY, TEXAS; P.R.P.P.C.T.= PLAT RECORDS, PALO PINTO COUNTY, TEXAS; F.E.R.C.= FEDERAL ENERGY REGULATORY COMMISSION; J.R.P.P.C.T.= JUDGEMENT RECORDS, PALO PINTO COUNTY, TEXAS; LFS = 5/8" IRON ROD W/CAP STAMPED "LINKFIELD RPLS 5087" FOUND.
- 4) METES AND BOUNDS DESCRIPTIONS TO ACCOMPANY THIS SURVEY.
- 5) LOCATION, POSITION AND GEOMETRY OF ROAD RIGHTS-OF-WAY SHOWN AND DESCRIBED HEREON BASED ON SURVEYS PROVIDED BY LINK FIELD SERVICES, NO DEED OF RECORD HAS BEEN RECORDED AT THIS TIME FOR SAME UNLESS NOTED OTHERWISE.

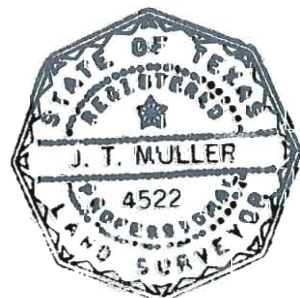
SURVEYORS CERTIFICATE

TO: BRAZOS RIVER AUTHORITY, PATTERSON PK LAND PARTNERSHIP, LTD., AND HERITAGE TITLE COMPANY OF AUSTIN, INC.

I, JAMES T. MULLER, A REGISTERED PROFESSIONAL LAND SURVEYOR IN THE STATE OF TEXAS, REGISTRATION NUMBER 4522, HEREBY STATE THAT A SURVEY OF THE REAL PROPERTY DESCRIBED IN SEPARATE LEGAL DESCRIPTION AS NOTED HEREON, WAS ACTUALLY MADE UPON THE GROUND UNDER MY DIRECTION AND SUPERVISION, AND THAT TO THE BEST OF MY PROFESSIONAL KNOWLEDGE AND BELIEF, THE INFORMATION SHOWN HEREON IS CORRECT AS DETERMINED BY SAID SURVEY.

THIS SURVEY SUBSTANTIALLY COMPLIES WITH THE CURRENT TEXAS SOCIETY OF PROFESSIONAL SURVEYORS STANDARDS AND SPECIFICATIONS FOR A CATEGORY 1B, CONDITION II SURVEY.

  
 JAMES T. MULLER  
 REGISTERED PROFESSIONAL LAND SURVEYOR  
 TEXAS REGISTRATION NO. 4522



DATE: JUNE 11, 2010

CURVE TABLE					
CURVE	LENGTH	DELTA	RADIUS	CHORD BEARING	CHORD
C1	16.80'	38°29'55"	25.00'	N43°56'41"W	16.48'
C2	15.69'	35°57'46"	25.00'	N69°50'09"W	15.44'
C3	12.76'	29°15'11"	25.00'	S77°33'23"W	12.63'
C4	7.03'	16°06'26"	25.00'	N45°04'58"W	7.00'
C5	19.24'	22°12'39"	49.64'	N49°13'16"W	19.12'
C6	43.77'	21°29'29"	116.68'	N67°27'14"W	43.51'
C7	23.43'	53°42'33"	25.00'	N89°21'49"W	22.59'
C8	13.86'	14°37'25"	54.29'	N28°09'48"W	13.82'
C9	39.34'	26°29'26"	85.09'	N75°57'56"W	38.99'
C10	14.64'	22°50'25"	36.74'	N47°17'42"W	14.55'
C11	44.29'	101°30'47"	25.00'	N86°37'53"W	38.72'
C12	41.76'	38°14'24"	62.57'	N80°31'33"W	40.99'
C13	39.94'	21°43'22"	105.34'	N50°04'28"W	39.70'
C14	24.89'	57°02'53"	25.00'	N15°36'41"W	23.88'
C15	15.52'	20°30'19"	43.38'	N80°48'18"W	15.44'
C16	18.29'	32°37'24"	32.12'	S87°50'58"W	18.04'
C17	11.22'	25°42'12"	25.00'	S79°46'13"W	11.12'
C18	4.31'	43°06'11"	5.72'	S88°28'12"W	4.21'
C19	29.04'	18°42'12"	88.96'	N83°19'37"W	28.91'
C20	5.93'	47°33'24"	7.14'	N71°36'53"W	5.76'
C21	0.34'	11°59'36"	1.64'	N41°50'23"W	0.34'
C22	10.58'	13°24'53"	45.17'	N44°07'28"W	10.55'
C23	12.23'	14°34'39"	48.09'	N28°02'24"W	12.20'
C24	13.46'	13°51'15"	55.67'	N41°41'23"W	13.43'
C25	20.45'	46°52'30"	25.00'	N72°15'03"W	19.89'
C26	10.77'	15°34'24"	39.63'	N20°27'52"W	10.74'
C27	7.45'	30°23'07"	14.05'	N50°18'08"W	7.36'
C28	17.25'	23°26'30"	42.16'	N56°08'13"W	17.13'
C29	3.86'	67°28'08"	3.27'	N78°09'02"W	3.64'
C30	25.90'	20°09'50"	73.59'	N76°57'50"W	25.76'
C31	13.96'	12°05'17"	66.17'	S33°00'49"E	13.93'
C32	14.28'	33°11'50"	24.64'	N52°44'32"W	14.08'
C33	40.56'	25°20'58"	91.68'	N63°59'32"W	40.23'
C34	9.76'	19°05'35"	29.29'	N14°36'58"W	9.72'
C35	22.21'	21°10'41"	60.09'	N79°36'41"W	22.09'
C36	16.32'	25°40'41"	36.41'	S78°14'56"W	16.18'
C37	40.28'	40°17'30"	57.28'	N66°24'38"W	39.46'
C38	32.27'	29°57'04"	61.74'	N50°51'01"W	31.91'
C39	46.12'	45°31'13"	58.05'	S80°05'06"W	44.92'
C40	29.54'	45°02'28"	37.57'	N77°20'21"W	28.78'
C41	38.19'	27°14'23"	80.34'	N48°11'55"W	37.83'
C42	10.08'	73°18'06"	7.88'	N15°43'48"W	9.40'
C43	7.34'	22°53'17"	18.38'	N78°24'32"W	7.29'
C44	4.17'	33°30'36"	7.12'	S87°36'20"W	4.11'
C45	21.84'	40°43'19"	30.72'	S87°16'46"W	21.38'
C46	20.07'	17°58'54"	63.96'	N83°23'05"W	19.99'
C47	25.83'	46°02'53"	32.14'	N70°51'37"W	25.14'
C48	4.99'	10°43'35"	26.64'	N42°28'23"W	4.98'
C49	9.57'	27°11'27"	20.17'	N51°17'25"W	9.48'
C50	5.02'	31°54'39"	9.01'	N28°42'56"W	4.95'
C51	9.70'	24°04'02"	23.09'	N23°35'29"W	9.63'
C52	4.87'	9°05'54"	30.67'	N39°04'23"W	4.86'
C53	3.48'	6°30'31"	30.67'	N67°12'46"W	3.48'
C54	15.33'	47°37'56"	18.44'	S80°43'27"W	14.89'
C55	29.94'	07°00'03"	245.00'	S87°09'08"E	29.92'
C56	136.08'	33°53'55"	230.00'	S78°57'37"E	134.10'
C57	199.07'	38°39'54"	295.00'	S81°20'37"E	195.32'
C58	145.59'	21°57'08"	380.00'	S89°41'59"E	144.70'
C59	117.13'	30°30'18"	220.00'	S75°12'31"E	115.75'
C60	11.14'	31°55'26"	20.00'	S74°29'57"E	11.00'
C61	18.42'	04°29'29"	235.00'	S40°15'30"E	18.42'
C62	61.29'	14°56'37"	235.00'	S61°14'26"E	61.12'


LINE TABLE		
LINE	BEARING	DISTANCE
L1	NOT USED	33.97'
L2	NOT USED	45.98'
L3	S00°31'23"E	34.45'
L4	S04°40'42"W	2.49'
L5	NOT USED	56.22'
L6	NOT USED	
L7	N06°30'59"W	14.56'
L8	N36°10'03"W	31.16'
L9	N12°56'48"W	13.67'
L10	N62°49'48"W	17.40'
L11	N60°47'14"W	19.23'
L12	N83°02'30"W	23.66'
L13	N21°37'56"W	26.96'
L14	N62°39'03"W	26.51'
L15	N78°47'15"W	10.29'
L16	N39°06'27"W	31.27'
L17	N81°14'50"W	27.00'
L18	S75°48'15"W	23.73'
L19	S68°36'02"W	21.58'
L20	S53°09'21"W	21.96'
L21	N16°34'51"W	21.62'
L22	N03°35'35"W	16.94'
L23	N39°43'28"W	24.52'
L24	N36°07'17"W	13.56'
L25	N49°29'41"W	11.78'
L26	N07°37'30"W	27.02'
L27	N66°09'56"W	68.80'
L28	S71°51'20"W	30.86'
L29	N63°31'55"W	1.53'
L30	N46°10'22"W	21.43'
L31	N22°05'11"W	23.93'
L32	N25°39'40"W	25.07'
L33	N68°28'02"W	51.07'
L34	N85°40'16"W	14.37'
L35	N41°18'37"W	23.19'
L36	N13°53'41"W	28.11'
L37	N64°10'41"W	23.57'
L38	N59°44'57"W	14.13'
L39	N55°35'26"W	52.53'
L40	S86°39'29"W	37.25'
L41	S60°57'39"W	20.17'
L42	N89°30'23"W	17.42'
L43	N19°17'30"W	10.00'
L44	N25°46'26"W	31.23'
L45	N52°02'27"W	33.89'
L46	N64°16'07"W	7.84'

LINE TABLE		
LINE	BEARING	DISTANCE
L47	N35°23'57"W	11.81'
L48	N55°18'21"W	21.11'
L49	N82°26'18"W	21.13'
L50	S86°38'03"W	25.67'
L51	S50°46'31"W	8.67'
L52	S78°17'20"W	4.57'
L53	N67°41'33"W	22.53'
L54	N48°19'03"W	18.58'
L55	N83°48'08"W	32.23'
L56	N06°57'59"E	15.23'
L57	N46°22'57"W	32.56'
L58	N62°11'05"W	9.75'
L59	N47°47'22"W	21.33'
L60	N87°26'28"W	3.03'
L61	N88°39'16"W	16.64'
L62	N77°58'30"W	20.97'
L63	N79°36'55"W	7.36'
L64	N49°57'41"W	20.76'
L65	N57°16'12"W	89.69'
L66	N11°20'39"E	2.85'
L67	N24°41'44"W	22.49'
L68	N63°11'38"W	8.02'
L69	N51°51'16"W	8.12'
L70	N87°49'02"W	5.89'
L71	S62°55'48"W	7.68'
L72	N80°10'38"W	2.85'
L73	N76°45'06"W	5.10'
L74	N37°01'45"W	8.25'
L75	N53°08'11"W	24.66'
L76	S83°26'31"W	15.16'
L77	N70°48'49"W	9.73'
L78	N62°35'08"W	14.57'
L79	S86°57'09"W	17.97'
L80	N56°00'50"W	13.89'
L81	N11°01'52"E	12.85'
L82	N47°19'40"W	31.05'
L83	N58°54'55"W	28.96'
L84	N64°48'49"W	19.02'
L85	N70°36'06"W	24.45'
L86	N75°31'33"W	26.49'
L87	S88°45'10"W	3.95'
L88	N41°44'36"W	5.33'
L89	N63°15'30"W	26.91'
L90	S66°22'18"W	12.26'
L91	N64°16'40"W	13.50'
L92	S61°16'52"W	13.36'

LINE TABLE		
LINE	BEARING	DISTANCE
L93	N39°49'39"W	13.26'
L94	N66°30'13"W	22.96'
L95	S83°39'11"W	13.07'
L96	N19°23'54"W	22.73'
L97	N61°18'49"W	50.66'
L98	N50°58'53"W	36.10'
L99	N66°03'40"W	37.75'
L100	N61°27'04"W	21.32'
L101	S88°47'32"W	38.76'
L102	S61°05'16"W	8.47'
L103	S89°00'30"W	13.20'
L104	N65°24'38"W	21.34'
L105	S71°40'45"W	13.97'
L106	N60°57'33"W	6.60'
L107	N67°04'25"W	27.04'
L108	N51°38'01"W	12.79'
L109	N79°24'43"W	27.77'
L110	N59°26'53"W	14.91'
L111	N77°30'14"W	10.82'
L112	N11°25'51"W	11.31'
L113	N49°55'44"W	18.33'
L114	N42°48'51"W	7.35'
L115	N40°16'22"W	21.45'
L116	N51°48'15"W	13.63'
L117	N81°00'27"W	19.89'
L118	S89°53'28"W	9.01'
L119	S61°51'10"W	11.39'
L120	N85°36'11"W	4.07'
L121	N62°30'32"W	10.01'
L122	S63°46'55"W	5.77'
L123	N87°27'48"W	18.58'
L124	N62°48'28"W	18.61'
L125	S80°46'34"W	16.56'
L126	S71°38'03"W	15.43'
L127	N48°13'50"W	17.46'
L128	N60°32'39"W	29.50'
L129	N89°16'33"W	25.65'
L130	N46°38'59"W	10.99'
L131	N58°48'40"W	29.59'
L132	S82°48'47"W	41.28'
L133	S70°04'26"W	17.82'
L134	S88°44'39"W	3.20'
L135	N89°18'58"W	18.23'
L136	S42°36'43"W	35.91'
L137	N54°51'30"W	10.68'
L138	N44°08'08"W	24.53'

ACREAGE TABLE	
LEASE BLOCK:	27.7721 ACRES
F.E.R.C. BUFFER AREA:	2.8186 ACRES
SURVEY BLOCK:	30.5907 ACRES TOTAL

STANDARD LAND SURVEY  
 OF  
**30.5907 ACRES**  
 SITUATED IN TRACT 3-1-94  
 AREA 1-28, LOTS 2 - 38  
 POSSUM KINGDOM LAKE  
 A.J. SMITH SURVEY, ABSTRACT 393  
 PALO PINTO COUNTY, TEXAS

	AECOM USA GROUP, INC. 1200 SUMMIT AVENUE, SUITE 600 FORT WORTH, TEXAS 76102 WWW.AECOM.COM 817.698.6770	
	Date: 12/17/09	Project No. 60102581.02

REVISED: 06/11/10  
 REVISED: 05/21/10 SHEET 1 OF 17

LINE TABLE		
LINE	BEARING	DISTANCE
L139	N61°45'59"W	39.47'
L140	S73°35'29"W	27.97'
L141	S61°45'25"W	26.74'
L142	S38°12'00"W	3.23'
L143	S84°45'49"W	1.53'
L144	N72°36'52"W	11.89'
L145	S83°45'55"W	7.12'
L146	N61°05'31"W	17.87'
L147	S89°14'44"W	16.82'
L148	N87°12'52"W	18.18'
L149	N70°39'14"W	16.96'
L150	S70°36'37"W	17.62'
L151	N62°33'45"W	0.60'
L152	N60°54'30"W	41.52'
L153	S83°43'51"W	20.90'
L154	N22°42'55"W	19.29'
L155	N60°02'26"W	18.91'
L156	N50°23'46"W	15.00'
L157	N47°40'31"W	10.28'
L158	N49°16'00"W	14.39'
L159	N49°40'58"W	19.73'
L160	N73°09'07"W	29.18'
L161	S68°21'58"W	32.04'
L162	N85°31'58"W	17.35'
L163	S63°18'47"W	19.32'
L164	S67°32'02"W	40.31'
L165	S55°10'55"W	11.93'
L166	S72°39'16"W	9.91'
L167	S54°55'52"W	21.25'
L168	S75°03'13"W	15.48'
L169	S68°17'45"W	36.06'
L170	S41°37'19"W	14.89'
L171	S48°10'22"W	7.71'
L172	N85°35'25"W	30.36'
L173	S35°19'08"W	21.73'
L174	N69°10'29"W	8.65'
L175	N62°09'30"W	16.80'
L176	N45°38'30"W	14.81'
L177	N88°05'45"W	11.67'
L178	N54°42'06"W	19.98'
L179	S86°12'04"W	39.34'
L180	N61°10'06"W	19.08'
L181	N75°52'04"W	37.46'
L182	N76°24'53"W	25.52'
L183	N74°52'57"W	0.38'
L184	N33°25'47"W	19.87'
L185	N87°00'17"W	7.69'
L186	N53°18'20"W	25.37'
L187	N73°42'31"W	31.58'
L188	S77°29'15"W	41.51'
L189	S19°44'18"W	4.08'
L190	S88°50'01"W	51.07'
L191	N86°52'55"W	8.40'
L192	S70°30'11"W	18.63'
L193	N75°09'59"W	14.24'
L194	S84°20'40"W	40.72'
L195	S37°52'43"W	24.59'
L196	S51°14'41"W	1.64'
L197	S78°58'08"W	12.07'
L198	S89°02'06"W	11.18'
L199	S81°29'44"W	28.94'
L200	S42°34'48"W	15.41'
L201	S70°02'26"W	7.61'
L202	S86°41'49"W	9.28'
L203	N76°00'59"W	1.71'
L204	S72°08'57"W	1.13'

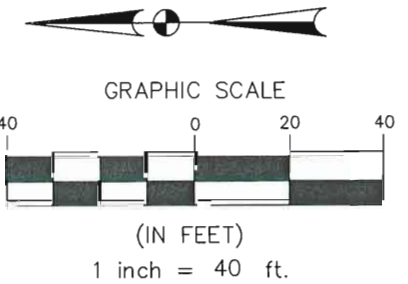
LINE TABLE		
LINE	BEARING	DISTANCE
L205	N48°36'59"W	25.78'
L206	S84°18'42"W	30.98'
L207	N83°45'13"W	21.49'
L208	S73°45'46"W	29.69'
L209	S71°04'07"W	33.25'
L210	S65°40'40"W	17.92'
L211	S72°56'21"W	10.93'
L212	S19°44'43"W	22.46'
L213	S47°01'53"W	6.98'
L214	N82°08'07"W	23.19'
L215	S57°30'00"W	7.34'
L216	S79°24'31"W	27.96'
L217	S68°36'34"W	47.35'
L218	S85°14'52"W	19.42'
L219	S33°49'24"W	34.50'
L220	S79°46'54"W	18.09'
L221	N73°42'50"W	12.24'
L222	N34°40'42"W	5.66'
L223	N78°20'49"W	3.05'
L224	S76°16'15"W	6.73'
L225	N05°06'46"E	3.73'
L226	N85°21'02"E	11.18'
L227	S79°39'38"E	7.69'
L228	N62°33'46"E	14.28'
L229	N24°47'19"E	12.09'
L230	N06°30'59"W	9.09'
L231	N36°10'03"W	29.68'
L232	N12°56'48"W	7.18'
L233	N62°49'48"W	6.22'
L234	N60°47'14"W	14.76'
L235	N83°02'30"W	19.76'
L236	S81°00'39"W	9.28'
L237	S50°22'53"W	10.92'
L238	S47°00'39"W	9.21'
L239	S77°16'59"W	2.33'
L240	N31°01'49"W	3.36'
L241	N18°10'29"E	15.08'
L242	N20°54'24"E	13.42'
L243	N21°37'56"W	18.61'
L244	N62°39'03"W	13.61'
L245	S71°00'17"W	5.82'
L246	S45°35'48"W	13.34'
L247	S35°49'42"W	4.27'
L248	S38°33'50"W	17.26'
L249	N68°28'18"W	3.11'
L250	N24°16'46"E	23.21'
L251	N19°20'33"W	9.54'
L252	N01°13'58"W	11.75'
L253	N39°06'27"W	15.47'
L254	N81°14'50"W	12.29'
L255	S75°48'15"W	17.08'
L256	S68°36'02"W	16.62'
L257	S53°09'21"W	23.41'
L258	S56°13'55"W	12.57'
L259	N69°00'24"W	11.59'
L260	N43°06'14"W	19.07'
L261	N15°24'26"W	6.44'
L262	N78°33'42"W	7.81'
L263	N17°57'22"E	13.11'
L264	N17°29'57"W	8.07'
L265	N13°50'57"W	10.71'
L266	N52°08'33"E	2.31'
L267	N39°43'28"W	17.16'
L268	N36°07'17"W	11.42'
L269	N49°29'41"W	18.41'
L270	N07°37'30"W	22.57'

LINE TABLE		
LINE	BEARING	DISTANCE
L271	N66°09'56"W	45.20'
L272	S71°51'20"W	31.53'
L273	N63°31'55"W	15.61'
L274	N46°10'22"W	30.58'
L275	N22°05'11"W	28.48'
L276	N25°39'40"W	14.49'
L277	N68°28'02"W	37.49'
L278	N85°40'16"W	16.00'
L279	S84°34'26"W	8.86'
L280	N17°15'05"W	9.41'
L281	N41°18'37"W	29.12'
L282	N13°53'41"W	22.47'
L283	N64°10'41"W	12.80'
L284	N59°44'57"W	16.00'
L285	N55°35'26"W	44.89'
L286	S86°39'29"W	23.00'
L287	S60°57'39"W	21.06'
L288	N89°30'23"W	41.58'
L289	N19°17'30"W	26.16'
L290	N25°46'26"W	23.98'
L291	N52°02'27"W	25.38'
L292	N64°16'07"W	11.60'
L293	N35°23'57"W	13.86'
L294	N55°18'21"W	10.69'
L295	N82°26'18"W	12.70'
L296	S86°38'03"W	15.19'
L297	S50°46'31"W	6.70'
L298	S78°17'20"W	18.34'
L299	N67°41'33"W	34.45'
L300	N48°19'03"W	14.85'
L301	N83°48'08"W	45.25'
L302	S72°12'33"W	9.85'
L303	N16°56'47"W	15.29'
L304	N85°01'52"E	11.07'
L305	N06°57'59"E	15.81'
L306	N46°22'57"W	16.53'
L307	N62°11'05"W	11.42'
L308	N82°01'05"W	10.47'
L309	N01°52'26"E	7.90'
L310	N88°39'16"W	2.73'
L311	S87°28'01"W	5.01'
L312	N83°39'22"W	4.75'
L313	S13°14'13"E	5.71'
L314	S81°49'13"W	6.32'
L315	N64°14'52"W	13.44'
L316	N43°12'39"W	7.29'
L317	N79°36'55"W	13.56'
L318	N49°57'41"W	25.78'
L319	N58°15'05"W	45.12'
L320	N56°23'45"W	50.63'
L321	N36°23'06"W	15.11'
L322	N36°59'46"E	5.61'
L323	S64°46'11"W	8.14'
L324	S66°22'55"W	10.68'
L325	N83°38'40"W	2.16'
L326	N51°07'44"W	16.01'
L327	S84°49'51"W	11.39'
L328	N70°48'49"W	17.24'
L329	N62°35'08"W	9.56'
L330	S49°30'17"W	10.96'
L331	N83°47'11"W	13.51'
L332	N07°54'41"E	5.66'
L333	N87°38'44"W	12.97'
L334	N20°20'58"W	11.66'
L335	N51°52'13"W	17.10'
L336	N11°01'52"E	14.11'

LINE TABLE		
LINE	BEARING	DISTANCE
L337	S63°58'26"W	17.54'
L338	N07°54'01"E	19.20'
L339	N58°54'55"W	22.30'
L340	N64°48'49"W	16.47'
L341	N70°36'06"W	22.11'
L342	N75°31'33"W	21.96'
L343	S88°45'10"W	12.02'
L344	N41°44'36"W	12.11'
L345	N63°15'30"W	10.40'
L346	S66°22'18"W	11.98'
L347	N64°16'40"W	12.13'
L348	S61°16'52"W	7.63'
L349	S11°55'03"E	3.22'
L350	N75°23'55"W	17.80'
L351	N49°29'09"W	7.90'
L352	N39°49'39"W	11.07'
L353	N66°30'13"W	10.37'
L354	S83°39'11"W	0.67'
L355	S14°18'25"W	4.36'
L356	S63°27'44"W	3.53'
L357	S27°05'11"W	3.49'
L358	N60°54'16"W	3.50'
L359	S70°23'26"W	1.19'
L360	S85°57'56"W	9.83'
L361	N58°34'41"W	5.54'
L362	N19°23'54"W	25.19'
L363	S68°20'21"W	11.06'
L364	N43°24'26"W	17.01'
L365	N52°26'39"E	11.31'
L366	N61°18'49"W	32.53'
L367	N50°58'53"W	35.06'
L368	N66°03'40"W	35.45'
L369	N61°27'04"W	15.69'
L370	S88°47'32"W	14.53'
L371	S05°43'59"E	6.48'
L372	N77°29'42"W	8.62'
L373	N44°58'42"W	5.79'
L374	S61°05'16"W	8.01'
L375	S89°00'30"W	18.00'
L376	S79°23'46"W	5.32'
L377	N65°24'38"W	19.25'
L378	S71°40'45"W	12.51'
L379	S82°20'15"W	4.29'
L380	N57°25'42"W	7.91'
L381	N59°50'36"W	6.90'
L382	N67°04'25"W	13.61'
L383	S32°49'29"W	6.91'
L384	S88°28'32"W	8.40'
L385	N20°10'42"E	8.64'
L386	N51°38'01"W	16.21'
L387	N79°24'43"W	25.99'
L388	N59°26'53"W	15.34'
L389	S71°52'05"W	5.99'
L390	S55°58'38"W	7.04'
L391	S89°17'02"W	8.83'
L392	N11°25'05"W	29.97'
L393	N49°55'44"W	11.16'
L394	N42°48'51"W	10.11'
L395	N66°38'33"W	12.29'
L396	N59°13'15"W	11.26'
L397	N35°35'31"E	9.49'
L398	N51°48'15"W	4.59'
L399	S39°52'13"W	9.42'
L400	N51°11'36"W	12.85'
L401	S61°51'10"W	9.89'
L402	S03°19'03"W	1.37'

LINE TABLE		
LINE	BEARING	DISTANCE
L403	N85°36'11"W	18.65'
L404	N62°30'32"W	15.11'
L405	S63°46'55"W	12.18'
L406	N87°27'48"W	52.53'
L407	N45°09'48"E	9.96'
L408	N17°40'29"W	11.33'
L409	S80°46'34"W	6.34'
L410	S15°07'23"W	13.29'
L411	N49°18'35"W	12.63'
L412	N60°32'39"W	19.36'
L413	N89°16'33"W	29.00'
L414	N46°38'59"W	18.08'
L415	N58°48'40"W	18.22'
L416	S82°48'47"W	29.56'
L417	S10°04'40"W	6.27'
L418	S88°44'39"W	24.86'
L419	N89°18'58"W	24.56'
L420	S42°36'43"W	18.18'
L421	S23°42'31"E	13.78'
L422	S64°03'48"W	12.22'
L423	N43°24'07"W	12.41'
L424	N54°51'30"W	19.77'
L425	N72°06'37"W	5.57'
L426	N20°55'15"E	11.62'
L427	N44°08'08"W	20.65'
L428	N61°45'59"W	25.33'
L429	S73°35'29"W	15.11'
L430	S61°45'25"W	18.93'
L431	S38°12'00"W	8.77'
L432	S84°45'49"W	17.29'
L433	N72°36'52"W	11.67'
L434	S83°45'55"W	24.24'
L435	N12°38'59"W	11.10'
L436	S89°14'44"W	10.98'
L437	N87°12'52"W	22.59'
L438	N70°39'14"W	11.81'
L439	S31°42'49"W	14.37'
L440	N62°33'45"W	24.16'
L441	N60°54'30"W	33.91'
L442	S83°43'51"W	31.62'
L443	N22°42'55"W	29.53'
L444	N60°02'26"W	12.58'
L445	N50°23'46"W	17.70'
L446	N47°40'31"W	10.53'
L447	N49°16'00"W	13.95'
L448	N49°40'58"W	14.44'
L449	N73°09'07"W	15.26'
L450	S68°21'58"W	29.11'
L451	N85°31'58"W	16.17'
L452	S10°44'16"W	13.02'
L453	S79°14'23"W	24.69'
L454	N24°21'26"E	7.17'
L455	S67°32'02"W	25.68'
L456	S55°10'55"W	13.07'
L457	S72°39'16"W	9.86'
L458	S54°55'52"W	21.78'
L459	S75°03'13"W	18.44'
L460	S68°17'45"W	28.66'
L461	S41°37'19"W	10.39'
L462	S48°10'22"W	

A.J. SMITH SURVEY  
ABSTRACT 393



**POSSUM KINGDOM LAKE**

THE BRAZOS RIVER CONSERVATION  
AND RECLAMATION DISTRICT  
TRACT 3-1-94  
VOLUME 182, PAGE 142  
D.R.P.P.C.T.

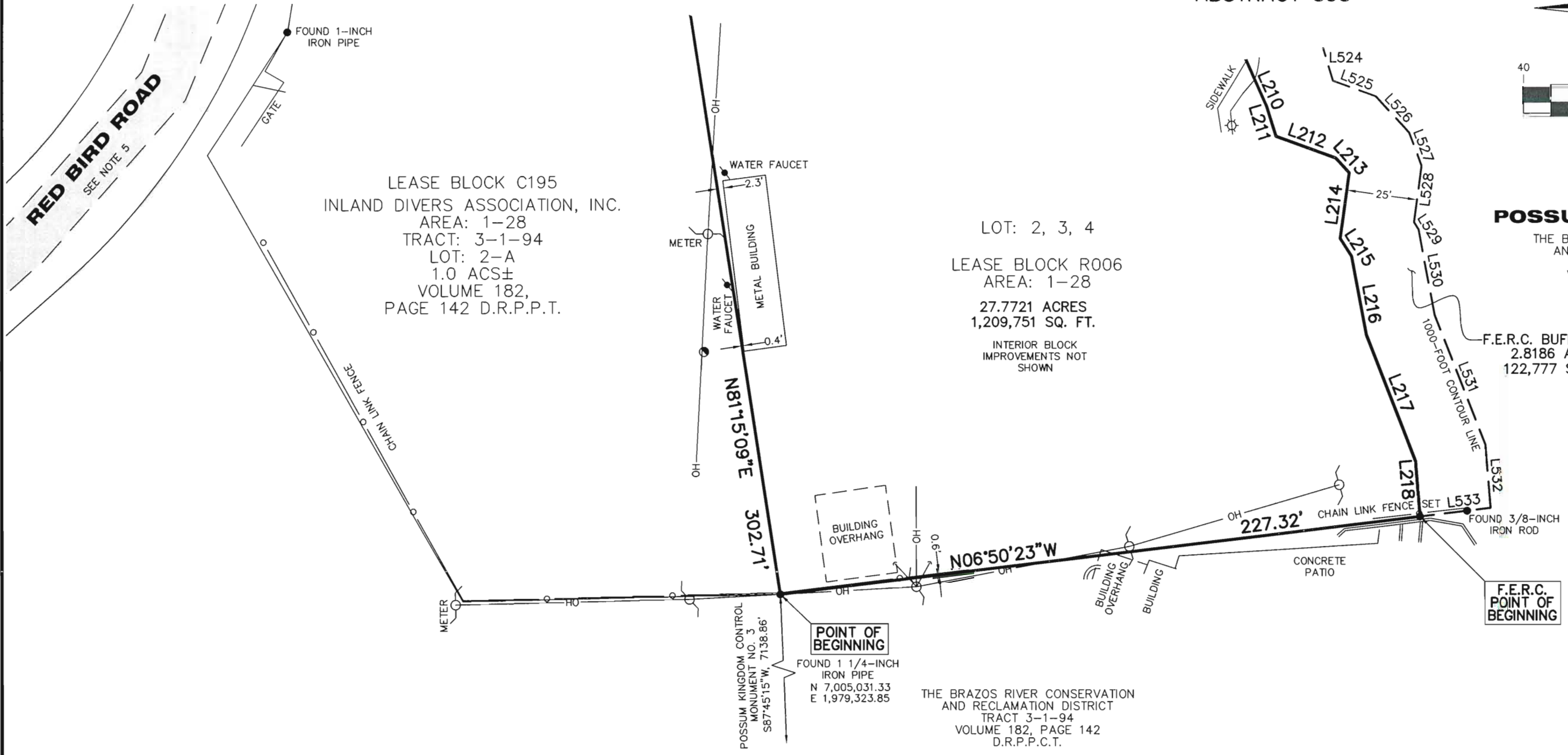
F.E.R.C. BUFFER AREA  
2.8186 ACRES  
122,777 SQ. FT.

LEASE BLOCK C195  
INLAND DIVERS ASSOCIATION, INC.  
AREA: 1-28  
TRACT: 3-1-94  
LOT: 2-A  
1.0 ACS±  
VOLUME 182,  
PAGE 142 D.R.P.P.T.

LOT: 2, 3, 4  
LEASE BLOCK R006  
AREA: 1-28  
27.7721 ACRES  
1,209,751 SQ. FT.  
INTERIOR BLOCK  
IMPROVEMENTS NOT  
SHOWN

THE BRAZOS RIVER CONSERVATION  
AND RECLAMATION DISTRICT  
TRACT 3-1-94  
VOLUME 182, PAGE 142  
D.R.P.P.C.T.

STANDARD LAND SURVEY  
OF  
**30.5907 ACRES**  
SITUATED IN TRACT 3-1-94  
AREA 1-28, LOTS 2 - 38  
POSSUM KINGDOM LAKE  
A.J. SMITH SURVEY, ABSTRACT 393  
PALO PINTO COUNTY, TEXAS



- LEGEND**
- = LEASE CORNER MARKER "AS NOTED"
  - = TELEPHONE BOX
  - ⊙ = WATER METER
  - ☼ = LIGHT
  - ⊙ = WATER VALVE
  - ⚓ = FLAG POLE
  - ⊙ = FIRE HYDRANT
  - OH = OVERHEAD LINES
  - ⊙ = POWER POLE
  - ⊙ = POST
  - ⊙ = IRRIGATION CONTROL VALVE
  - ⊙ = SIGN
  - ⊙ = ELECTRIC BOX
  - ⊙ = CLEANOUT
  - ⊙ = MAIL BOX

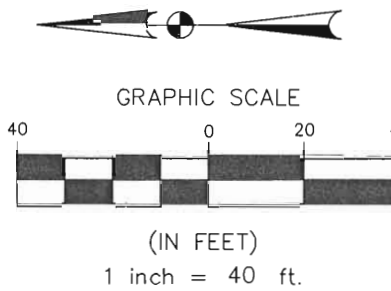
REVISED: 06/11/10  
REVISED: 05/21/10 SHEET 3 OF 17

<b>AECOM</b>	AECOM USA GROUP, INC. 1200 SUMMIT AVENUE, SUITE 600 FORT WORTH, TEXAS 76102 WWW.AECOM.COM 817.698.6770	
	Date: 12/17/09	Project No. 60102581.02

NO PART OR PARTS OF THIS DRAWING MAY BE REPRODUCED OR TRANSMITTED IN ANY WAY OR FORM (ELECTRONIC, MECHANICAL, PHOTOCOPYING, OR OTHERWISE) WITHOUT THE EXPRESS WRITTEN PERMISSION OF AECOM.

S:\Survey\Projects\60102581\3.0 Ref Docs\Drafting\Undeveloped Strips\Blocks\R006\60052528 R006ByR2a.dwg 5/21/2010 12:38:06 PM CDT

A.J. SMITH SURVEY  
ABSTRACT 393



- LEGEND
- = LEASE CORNER MARKER "AS NOTED"
  - = TELEPHONE BOX
  - ⊙ = WATER METER
  - ⊛ = LIGHT
  - ⊙ = WATER VALVE
  - ⊙ = FLAG POLE
  - ⊙ = FIRE HYDRANT
  - OH = OVERHEAD LINES
  - ⊙ = POWER POLE
  - ⊙ = POST
  - ⊙ = IRRIGATION CONTROL VALVE
  - ⊙ = SIGN
  - ⊙ = ELECTRIC BOX
  - ⊙ = CLEANOUT
  - ⊙ = MAIL BOX

LOT: 6

LOT: 5

LEASE BLOCK R006  
AREA: 1-28  
27.7721 ACRES  
1,209,751 SQ. FT.

LOT: 2, 3, 4

THE BRAZOS RIVER CONSERVATION  
AND RECLAMATION DISTRICT  
TRACT 3-1-94  
VOLUME 182, PAGE 142  
D.R.P.P.C.T.

INLAND DIVERS ASSOCIATION, INC.  
AREA: 1-28  
TRACT: 3-1-94  
LOT: 2-A  
1.0 ACS±  
VOLUME 182,  
PAGE 142 D.R.P.P.T.

LEASE BLOCK C195

**POSSUM KINGDOM LAKE**

THE BRAZOS RIVER CONSERVATION  
AND RECLAMATION DISTRICT  
TRACT 3-1-94  
VOLUME 182, PAGE 142  
D.R.P.P.C.T.

STANDARD LAND SURVEY  
OF

**30.5907 ACRES**

SITUATED IN TRACT 3-1-94  
AREA 1-28, LOTS 2 - 38  
POSSUM KINGDOM LAKE  
A.J. SMITH SURVEY, ABSTRACT 393  
PALO PINTO COUNTY, TEXAS

**AECOM**

AECOM USA GROUP, INC.  
1200 SUMMIT AVENUE, SUITE 600  
FORT WORTH, TEXAS 76102  
WWW.AECOM.COM  
817.698.6770

REVISED: 06/11/10  
REVISED: 05/21/10 SHEET 4 OF 17

Date: 12/17/09

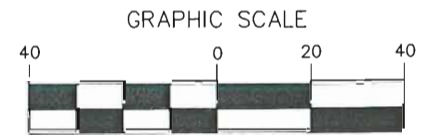
Project No. 60102581.02

60052528  
R006ByR2a.dwg

NO PART OR PARTS OF THIS DRAWING MAY BE REPRODUCED OR TRANSMITTED IN ANY WAY OR FORM (ELECTRONIC, MECHANICAL, PHOTOCOPYING, OR OTHERWISE) WITHOUT THE EXPRESS WRITTEN PERMISSION OF AECOM.

S:\Surveycon\Projects\60102581\3.0 Ref Docs\Drafting\Undeveloped Strips\Blocks\R006\60052528 R006ByR2a.dwg 5/21/2010 12:38:06 PM CDT

A.J. SMITH SURVEY  
ABSTRACT 393



(IN FEET)  
1 inch = 40 ft.

LEGEND

- = LEASE CORNER MARKER "AS NOTED"
- = TELEPHONE BOX
- ⊙ = WATER METER
- ⊛ = LIGHT
- ⊙ = WATER VALVE
- ⊙ = FLAG POLE
- ⊙ = FIRE HYDRANT
- ⊙ = OVERHEAD LINES
- ⊙ = POWER POLE
- ⊙ = POST
- ⊙ = IRRIGATION CONTROL VALVE
- ⊙ = SIGN
- ⊙ = ELECTRIC BOX
- ⊙ = CLEANOUT
- ⊙ = MAIL BOX

**POSSUM KINGDOM LAKE**

THE BRAZOS RIVER CONSERVATION  
AND RECLAMATION DISTRICT  
TRACT 3-1-94  
VOLUME 182, PAGE 142  
D.R.P.P.C.T.

STANDARD LAND SURVEY  
OF

**30.5907 ACRES**

SITUATED IN TRACT 3-1-94  
AREA 1-28, LOTS 2 - 38  
POSSUM KINGDOM LAKE  
A.J. SMITH SURVEY, ABSTRACT 393  
PALO PINTO COUNTY, TEXAS

**AECOM**

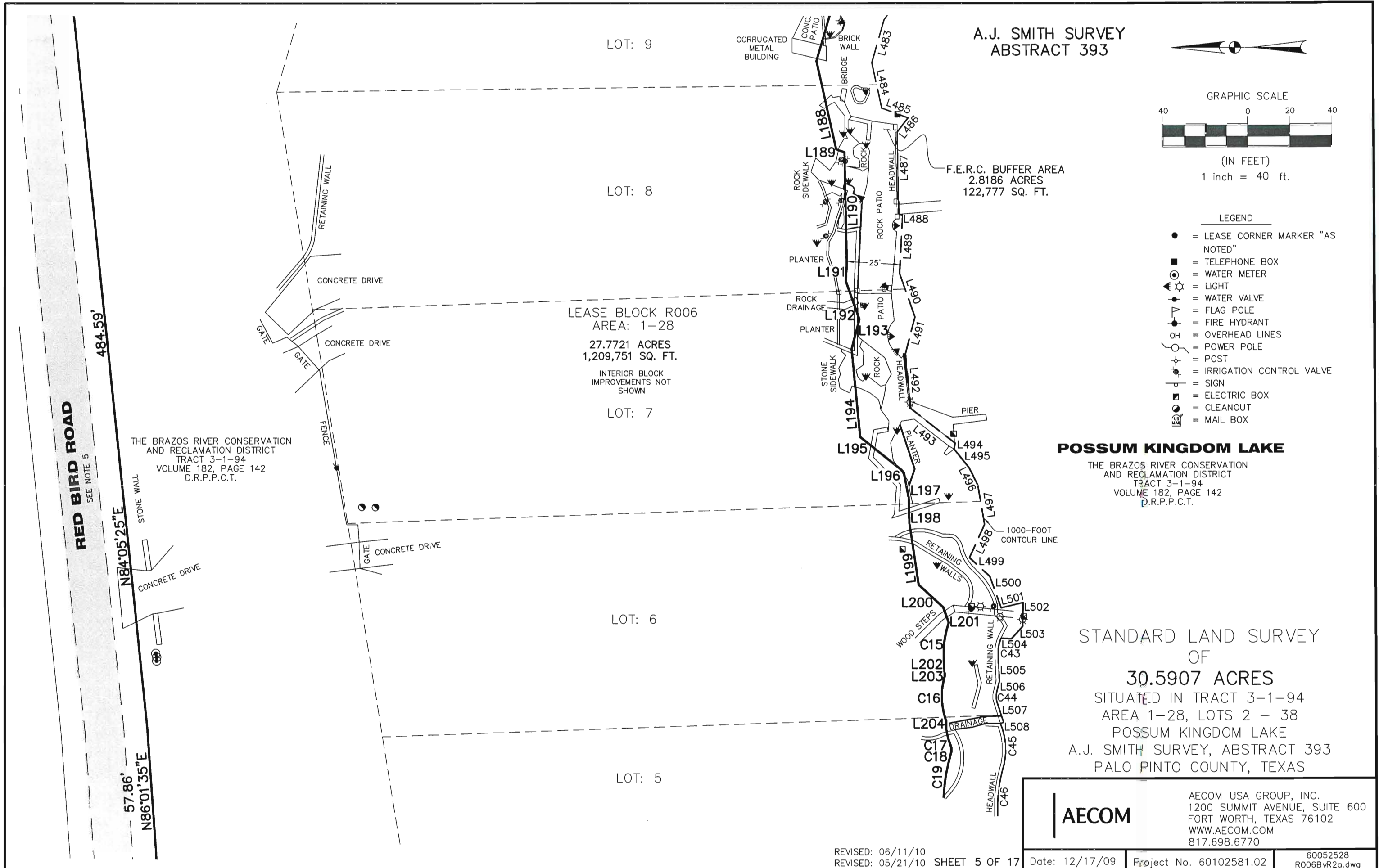
AECOM USA GROUP, INC.  
1200 SUMMIT AVENUE, SUITE 600  
FORT WORTH, TEXAS 76102  
WWW.AECOM.COM  
817.698.6770

REVISED: 06/11/10  
REVISED: 05/21/10 SHEET 5 OF 17

Date: 12/17/09

Project No. 60102581.02

60052528  
R006ByR2a.dwg



NO PART OR PARTS OF THIS DRAWING MAY BE REPRODUCED OR TRANSMITTED IN ANY WAY OR FORM (ELECTRONIC, MECHANICAL, PHOTOCOPYING, OR OTHERWISE) WITHOUT THE EXPRESS WRITTEN PERMISSION OF AECOM.

A.J. SMITH SURVEY  
ABSTRACT 393

LOT: 12

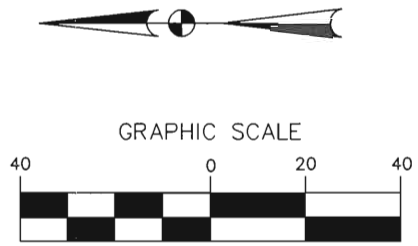
LOT: 11

LEASE BLOCK R006  
AREA: 1-28  
27.7721 ACRES  
1,209,751 SQ. FT.

LOT: 10

LOT: 9

LOT: 8



(IN FEET)  
1 inch = 40 ft.

LEGEND

- = LEASE CORNER MARKER "AS NOTED"
- = TELEPHONE BOX
- ⊙ = WATER METER
- ⊛ = LIGHT
- ⊕ = WATER VALVE
- ⊖ = FLAG POLE
- ⊙ = FIRE HYDRANT
- OH = OVERHEAD LINES
- ⊙ = POWER POLE
- ⊙ = POST
- ⊕ = IRRIGATION CONTROL VALVE
- ⊖ = SIGN
- ⊙ = ELECTRIC BOX
- ⊙ = CLEANOUT
- ⊙ = MAIL BOX

THE BRAZOS RIVER CONSERVATION  
AND RECLAMATION DISTRICT  
TRACT 3-1-94  
VOLUME 182, PAGE 142  
D.R.P.P.C.T.

FOUND 5/8-INCH  
IRON ROD

18" CMP

GRAVEL DRIVE

GRAVEL DRIVE

OH  
CHAIN LINK FENCE

WOOD FENCE

WATER FAUCET

CORRUGATED  
METAL  
BUILDING

CONC.  
PATIO

BRICK  
WALL

BRIDGE

STEPS

STONE  
SIDEWALK

PIER

WOOD  
DECK

FLAG  
STONE

ROCK  
SIDEWALK

PATIO

ROCK  
WALL

BRICK

ROCK  
RETAINING  
WALL

PUMP  
HOUSE

PIER

SIDEWALK

PIER

ROCK  
WALL

PUMP  
HOUSE

BRICK

ROCK  
SIDEWALK

ROCK  
WALL

PUMP  
HOUSE

PIER

ROCK  
WALL

PUMP  
HOUSE

PIER

ROCK  
WALL

PUMP  
HOUSE

PIER

ROCK  
WALL

PUMP  
HOUSE

PIER

ROCK  
WALL

PUMP  
HOUSE

PIER

ROCK  
WALL

PUMP  
HOUSE

PIER

ROCK  
WALL

PUMP  
HOUSE

PIER

ROCK  
WALL

PUMP  
HOUSE

PIER

ROCK  
WALL

PUMP  
HOUSE

PIER

ROCK  
WALL

PUMP  
HOUSE

PIER

ROCK  
WALL

PUMP  
HOUSE

PIER

ROCK  
WALL

PUMP  
HOUSE

PIER

ROCK  
WALL

PUMP  
HOUSE

PIER

ROCK  
WALL

PUMP  
HOUSE

PIER

ROCK  
WALL

PUMP  
HOUSE

PIER

ROCK  
WALL

PUMP  
HOUSE

PIER

ROCK  
WALL

PUMP  
HOUSE

PIER

ROCK  
WALL

PUMP  
HOUSE

PIER

F.E.R.C. BUFFER AREA  
2.8186 ACRES  
122,777 SQ. FT.

**POSSUM KINGDOM LAKE**

THE BRAZOS RIVER CONSERVATION  
AND RECLAMATION DISTRICT  
TRACT 3-1-94  
VOLUME 182, PAGE 142  
D.R.P.P.C.T.

STANDARD LAND SURVEY  
OF

**30.5907 ACRES**

SITUATED IN TRACT 3-1-94  
AREA 1-28, LOTS 2 - 38  
POSSUM KINGDOM LAKE  
A.J. SMITH SURVEY, ABSTRACT 393  
PALO PINTO COUNTY, TEXAS

**AECOM**

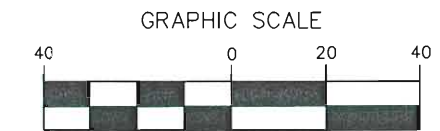
AECOM USA GROUP, INC.  
1200 SUMMIT AVENUE, SUITE 600  
FORT WORTH, TEXAS 76102  
WWW.AECOM.COM  
817.698.6770

REVISED: 06/11/10  
REVISED: 05/21/10 SHEET 6 OF 17

Date: 12/17/09 Project No. 60102581.02 60052528 R006ByR2a.dwg

NO PART OR PARTS OF THIS DRAWING MAY BE REPRODUCED OR TRANSMITTED IN ANY WAY OR FORM (ELECTRONIC, MECHANICAL, PHOTOCOPYING, OR OTHERWISE) WITHOUT THE EXPRESS WRITTEN PERMISSION OF AECOM.

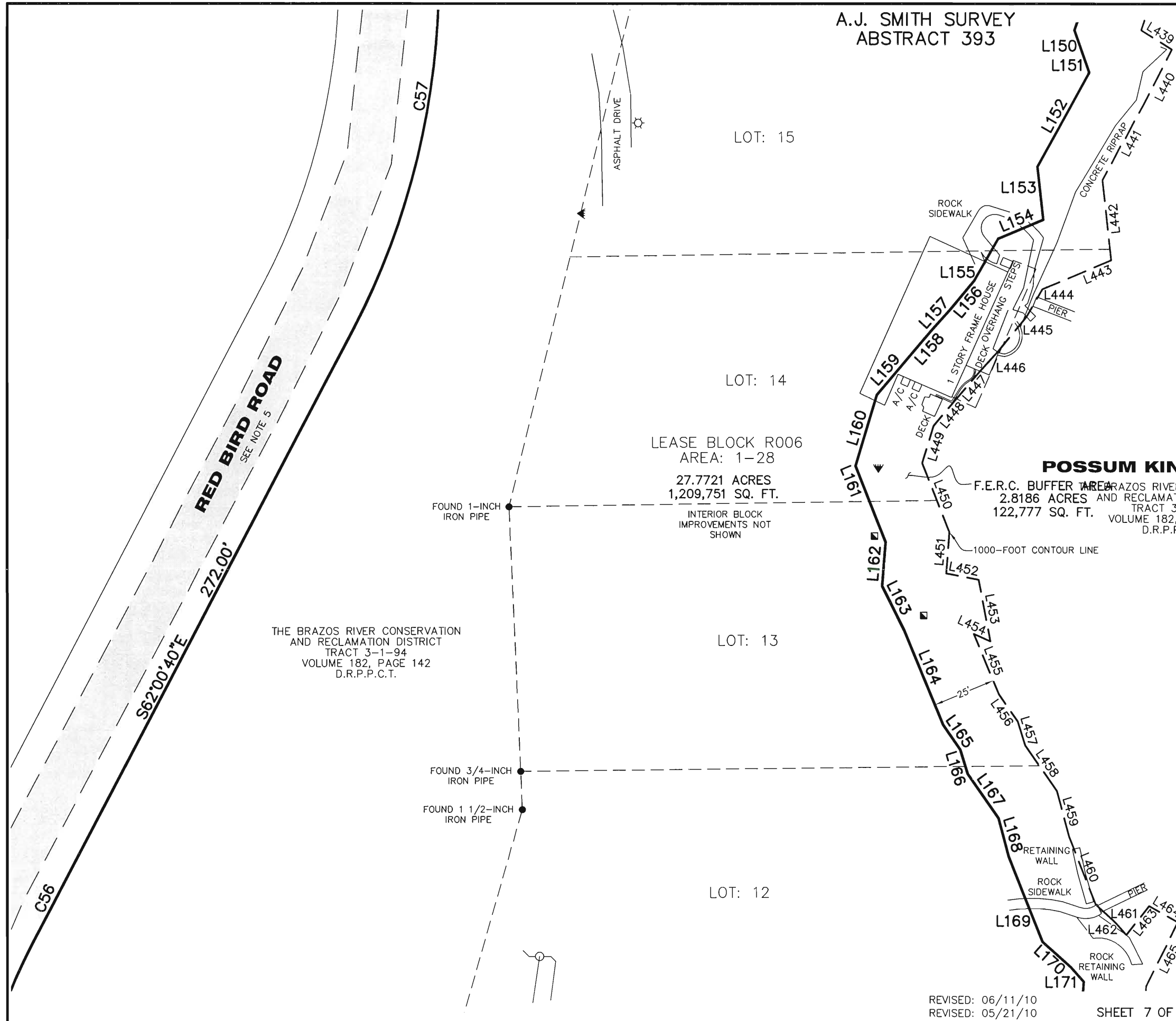
A.J. SMITH SURVEY  
ABSTRACT 393



(IN FEET)  
1 inch = 40 ft.

LEGEND

- = LEASE CORNER MARKER "AS NOTED"
- = TELEPHONE BOX
- ⊙ = WATER METER
- ⊙ = LIGHT
- ⊙ = WATER VALVE
- ⊙ = FLAG POLE
- ⊙ = FIRE HYDRANT
- OH = OVERHEAD LINES
- ⊙ = POWER POLE
- ⊙ = POST
- ⊙ = IRRIGATION CONTROL VALVE
- ⊙ = SIGN
- ⊙ = ELECTRIC BOX
- ⊙ = CLEANOUT
- ⊙ = MAIL BOX



**POSSUM KINGDOM LAKE**

F.E.R.C. BUFFER AREA BRAZOS RIVER CONSERVATION  
AND RECLAMATION DISTRICT  
TRACT 3-1-94  
2.8186 ACRES AND RECLAMATION DISTRICT  
122,777 SQ. FT. VOLUME 182, PAGE 142  
D.R.P.P.C.T.

THE BRAZOS RIVER CONSERVATION  
AND RECLAMATION DISTRICT  
TRACT 3-1-94  
VOLUME 182, PAGE 142  
D.R.P.P.C.T.

STANDARD LAND SURVEY  
OF  
**30.5907 ACRES**  
SITUATED IN TRACT 3-1-94  
AREA 1-28, LOTS 2 - 38  
POSSUM KINGDOM LAKE  
A.J. SMITH SURVEY, ABSTRACT 393  
PALO PINTO COUNTY, TEXAS

**AECOM**

AECOM USA GROUP, INC.  
1200 SUMMIT AVENUE, SUITE 600  
FORT WORTH, TEXAS 76102  
WWW.AECOM.COM  
817.698.6770

REVISED: 06/11/10  
REVISED: 05/21/10

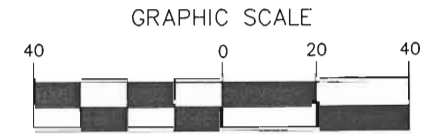
SHEET 7 OF 17

Date: 12/17/09 Project No. 60102581.02 60052528 R006ByR2a.dwg

NO PART OR PARTS OF THIS DRAWING MAY BE REPRODUCED OR TRANSMITTED IN ANY WAY OR FORM (ELECTRONIC, MECHANICAL, PHOTOCOPYING, OR OTHERWISE) WITHOUT THE EXPRESS WRITTEN PERMISSION OF AECOM.

S:\Survcon\Projects\60102581\3.0 Ref Docs\Drafting\Undeveloped Strips\Blocks\06052528 R006ByR2.dwg 5/21/2010 12:38:06 PM CDT

A.J. SMITH SURVEY  
ABSTRACT 393



(IN FEET)  
1 inch = 40 ft.

LEGEND

- = LEASE CORNER MARKER "AS NOTED"
- = TELEPHONE BOX
- ⊙ = WATER METER
- ⊙ = LIGHT
- ⊙ = WATER VALVE
- ⊙ = FLAG POLE
- ⊙ = FIRE HYDRANT
- OH = OVERHEAD LINES
- ⊙ = POWER POLE
- ⊙ = POST
- ⊙ = IRRIGATION CONTROL VALVE
- ⊙ = SIGN
- ⊙ = ELECTRIC BOX
- ⊙ = CLEANOUT
- ⊙ = MAIL BOX

LOT: 19

LOT: 18

LOT: 17

LOT: 16

LOT: 15

THE BRAZOS RIVER CONSERVATION  
AND RECLAMATION DISTRICT  
TRACT 3-1-94  
VOLUME 182, PAGE 142  
D.R.P.P.C.T.

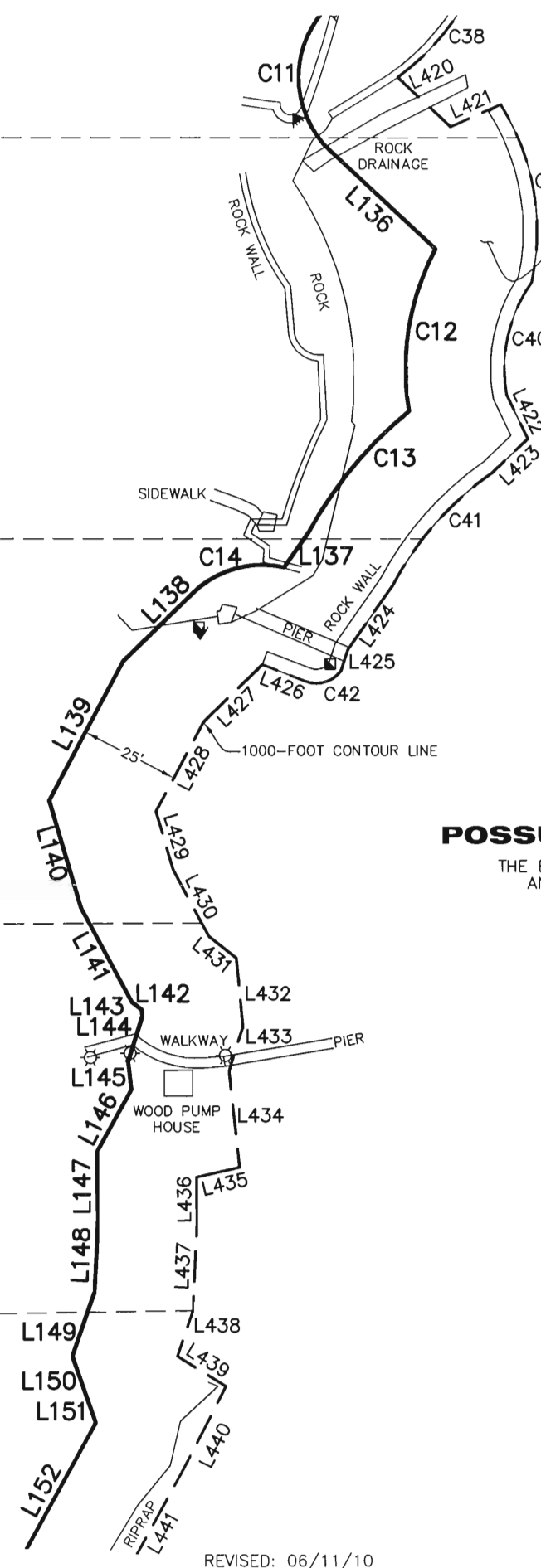
LEASE BLOCK R006  
AREA: 1-28  
27.7721 ACRES  
1,209,751 SQ. FT.  
INTERIOR BLOCK  
IMPROVEMENTS NOT  
SHOWN

F.E.R.C. BUFFER AREA  
2.8186 ACRES  
122,777 SQ. FT.

**POSSUM KINGDOM LAKE**  
THE BRAZOS RIVER CONSERVATION  
AND RECLAMATION DISTRICT  
TRACT 3-1-94  
VOLUME 182, PAGE 142  
D.R.P.P.C.T.

STANDARD LAND SURVEY  
OF  
30.5907 ACRES  
SITUATED IN TRACT 3-1-94  
AREA 1-28, LOTS 2 - 38  
POSSUM KINGDOM LAKE  
A.J. SMITH SURVEY, ABSTRACT 393  
PALO PINTO COUNTY, TEXAS

<b>AECOM</b>	AECOM USA GROUP, INC. 1200 SUMMIT AVENUE, SUITE 600 FORT WORTH, TEXAS 76102 WWW.AECOM.COM 817.698.6770	
	Date: 12/17/09	Project No. 60102581.02
	60052528	R006ByR2a.dwg



**RED BIRD ROAD**  
SEE NOTE 5

S78°43'25"E  
233.59'

C58

65.51'

N79°19'27"E

C57

FOUND 1/2-INCH  
IRON ROD

FOUND 1-INCH  
IRON PIPE BENT

FOUND 1-INCH  
IRON PIPE BENT

ASPHALT DRIVE

REVISED: 06/11/10  
REVISED: 05/21/10 SHEET 8 OF 17

NO PART OR PARTS OF THIS DRAWING MAY BE REPRODUCED OR TRANSMITTED IN ANY WAY OR FORM (ELECTRONIC, MECHANICAL, PHOTOCOPYING, OR OTHERWISE) WITHOUT THE EXPRESS WRITTEN PERMISSION OF AECOM.

S:\Survey\Projects\60102581\3.0 Ref Does\Drafting\Undeveloped Strips\Blocks\R006\60052528 R006ByR2.dwg 5/21/2010 12:38:06 PM CDT

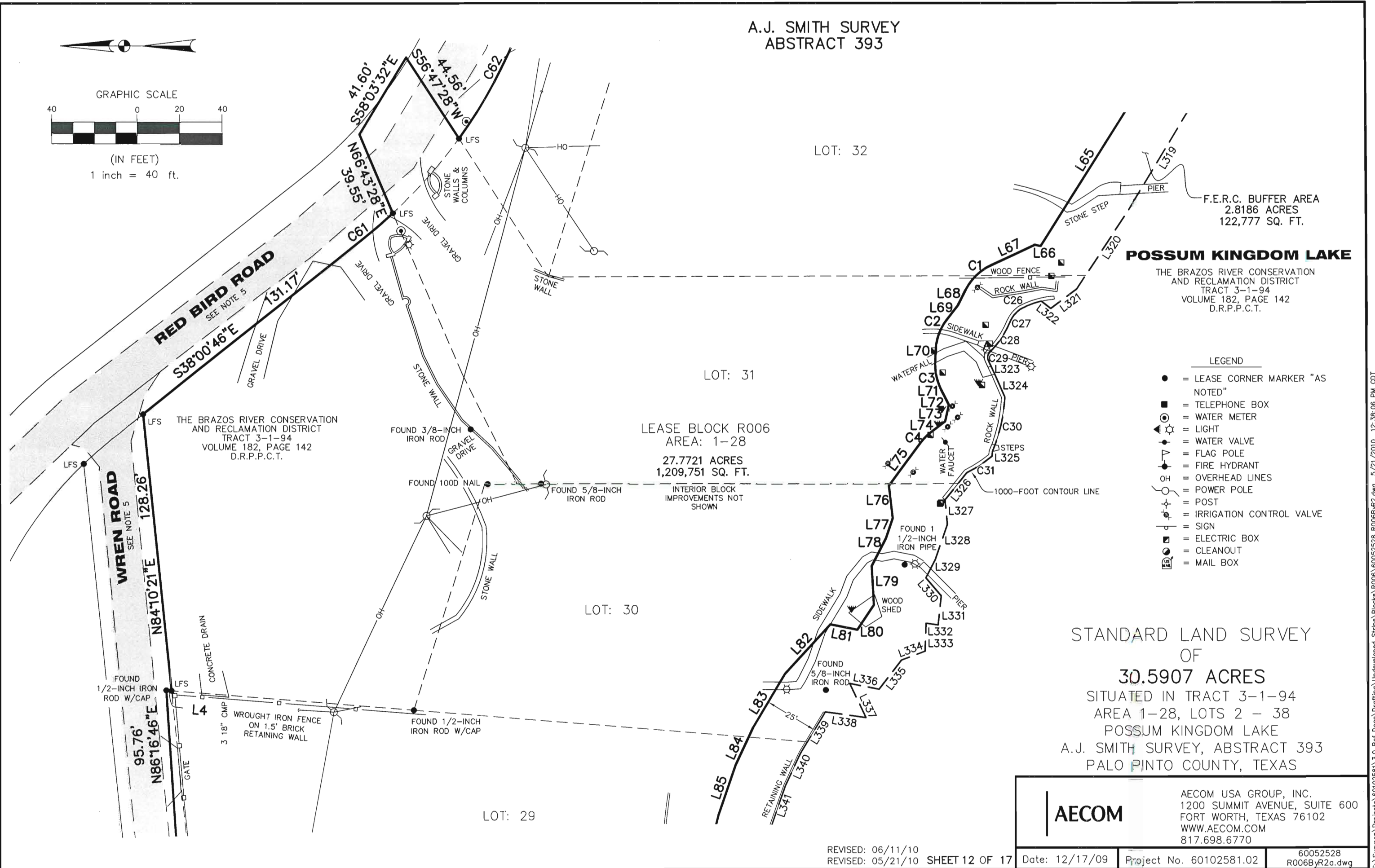
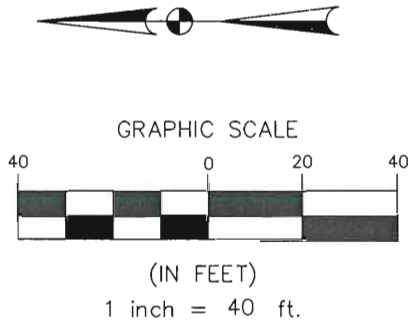








A.J. SMITH SURVEY  
ABSTRACT 393



**RED BIRD ROAD**  
SEE NOTE 5

**WREN ROAD**  
SEE NOTE 5

THE BRAZOS RIVER CONSERVATION  
AND RECLAMATION DISTRICT  
TRACT 3-1-94  
VOLUME 182, PAGE 142  
D.R.P.P.C.T.

LEASE BLOCK R006  
AREA: 1-28  
27.7721 ACRES  
1,209,751 SQ. FT.

INTERIOR BLOCK  
IMPROVEMENTS NOT  
SHOWN

**POSSUM KINGDOM LAKE**

THE BRAZOS RIVER CONSERVATION  
AND RECLAMATION DISTRICT  
TRACT 3-1-94  
VOLUME 182, PAGE 142  
D.R.P.P.C.T.

**LEGEND**

- = LEASE CORNER MARKER "AS NOTED"
- = TELEPHONE BOX
- ⊙ = WATER METER
- ⊙ = LIGHT
- ⊙ = WATER VALVE
- ⊙ = FLAG POLE
- ⊙ = FIRE HYDRANT
- OH = OVERHEAD LINES
- ⊙ = POWER POLE
- ⊙ = POST
- ⊙ = IRRIGATION CONTROL VALVE
- ⊙ = SIGN
- ⊙ = ELECTRIC BOX
- ⊙ = CLEANOUT
- ⊙ = MAIL BOX

STANDARD LAND SURVEY  
OF  
**30.5907 ACRES**  
SITUATED IN TRACT 3-1-94  
AREA 1-28, LOTS 2 - 38  
POSSUM KINGDOM LAKE  
A.J. SMITH SURVEY, ABSTRACT 393  
PALO PINTO COUNTY, TEXAS

<b>AECOM</b>	AECOM USA GROUP, INC. 1200 SUMMIT AVENUE, SUITE 600 FORT WORTH, TEXAS 76102 WWW.AECOM.COM 817.698.6770	
	Date: 12/17/09	Project No. 60102581.02

REVISED: 06/11/10  
REVISED: 05/21/10 SHEET 12 OF 17

NO PART OR PARTS OF THIS DRAWING MAY BE REPRODUCED OR TRANSMITTED IN ANY WAY OR FORM (ELECTRONIC, MECHANICAL, PHOTOCOPYING, OR OTHERWISE) WITHOUT THE EXPRESS WRITTEN PERMISSION OF AECOM.

S:\Survey\Projects\60102581\3.0 Ref Docs\Drafting\Undeveloped Strips\Blocks\R006\60052528 R006ByR2a.dwg 5/21/2010 12:38:06 PM CDT

A.J. SMITH SURVEY  
ABSTRACT 393

THE BRAZOS RIVER CONSERVATION  
AND RECLAMATION DISTRICT  
TRACT 3-1-94  
VOLUME 182, PAGE 142  
D.R.P.P.C.T.

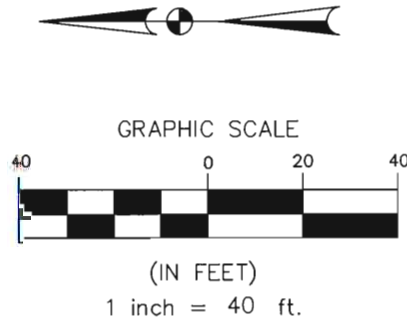
LOT: 32-A-2

LOT: 32-A-1

THE BRAZOS RIVER CONSERVATION  
AND RECLAMATION DISTRICT  
TRACT 3-1-94  
VOLUME 182, PAGE 142  
D.R.P.P.C.T.

LEASE BLOCK R006  
AREA: 1-28  
27.7721 ACRES  
1,209,751 SQ. FT.  
INTERIOR BLOCK  
IMPROVEMENTS NOT  
SHOWN

STANDARD LAND SURVEY  
OF  
30.5907 ACRES  
SITUATED IN TRACT 3-1-94  
AREA 1-28, LOTS 2 - 38  
POSSUM KINGDOM LAKE  
A.J. SMITH SURVEY, ABSTRACT 393  
PALO PINTO COUNTY, TEXAS



- LEGEND
- = LEASE CORNER MARKER "AS NOTED"
  - = TELEPHONE BOX
  - ⊙ = WATER METER
  - ⊙ = LIGHT
  - ⊙ = WATER VALVE
  - ⊙ = FLAG POLE
  - ⊙ = FIRE HYDRANT
  - OH = OVERHEAD LINES
  - ⊙ = POWER POLE
  - ⊙ = POST
  - ⊙ = IRRIGATION CONTROL VALVE
  - ⊙ = SIGN
  - ⊙ = ELECTRIC BOX
  - ⊙ = CLEANOUT
  - ⊙ = MAIL BOX

<b>AECOM</b>	AECOM USA GROUP, INC. 1200 SUMMIT AVENUE, SUITE 600 FORT WORTH, TEXAS 76102 WWW.AECOM.COM 817.698.6770	
	Date: 12/17/09	Project No. 60102581.02

REVISED: 06/11/10  
REVISED: 05/21/10 SHEET 13 OF 17

S:\Surcon\Projects\60102581\3.0 Ref Docs\Drafting\Undeveloped Strips\Blocks\R006\60052528 R006ByR2.dwg 5/21/2010 12:38:06 PM CDT

NO PART OR PARTS OF THIS DRAWING MAY BE REPRODUCED OR TRANSMITTED IN ANY WAY OR FORM (ELECTRONIC, MECHANICAL, PHOTOCOPYING, OR OTHERWISE) WITHOUT THE EXPRESS WRITTEN PERMISSION OF AECOM.



A.J. SMITH SURVEY  
ABSTRACT 393

LOTS: 34, 35, 35A & 36

LEASE BLOCK R006  
AREA: 1-28  
27.7721 ACRES  
1,209,751 SQ. FT.

INTERIOR BLOCK  
IMPROVEMENTS NOT  
SHOWN

LOT: 33 & 34A

**POSSUM KINGDOM LAKE**

THE BRAZOS RIVER CONSERVATION  
AND RECLAMATION DISTRICT  
TRACT 3-1-94  
VOLUME 182, PAGE 142  
D.R.P.P.C.T.

LEGEND

- = LEASE CORNER MARKER "AS NOTED"
- = TELEPHONE BOX
- ⊙ = WATER METER
- ⊛ = LIGHT
- ⊙ = WATER VALVE
- ⊙ = FLAG POLE
- ⊙ = FIRE HYDRANT
- OH = OVERHEAD LINES
- ⊙ = POWER POLE
- ⊙ = POST
- ⊙ = IRRIGATION CONTROL VALVE
- ⊙ = SIGN
- ⊙ = ELECTRIC BOX
- ⊙ = CLEANOUT
- ⊙ = MAIL BOX

F.E.R.C. BUFFER AREA  
2.8186 ACRES  
122,777 SQ. FT.

STANDARD LAND SURVEY  
OF

30.5907 ACRES

SITUATED IN TRACT 3-1-94  
AREA 1-28, LOTS 2 - 38

POSSUM KINGDOM LAKE

A.J. SMITH SURVEY, ABSTRACT 393  
PALO PINTO COUNTY, TEXAS

**AECOM**

AECOM USA GROUP, INC.  
1200 SUMMIT AVENUE, SUITE 600  
FORT WORTH, TEXAS 76102  
WWW.AECOM.COM  
817.698.6770

REVISED: 06/11/10  
REVISED: 05/21/10 SHEET 15 OF 17

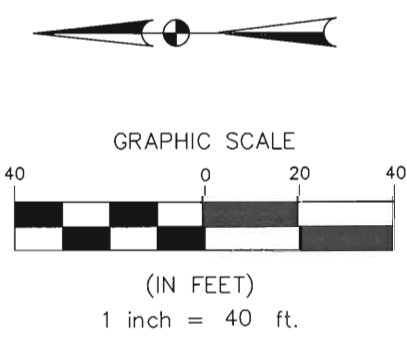
Date: 12/17/09

Project No. 60102581.02

60052528  
R006ByR2a.dwg

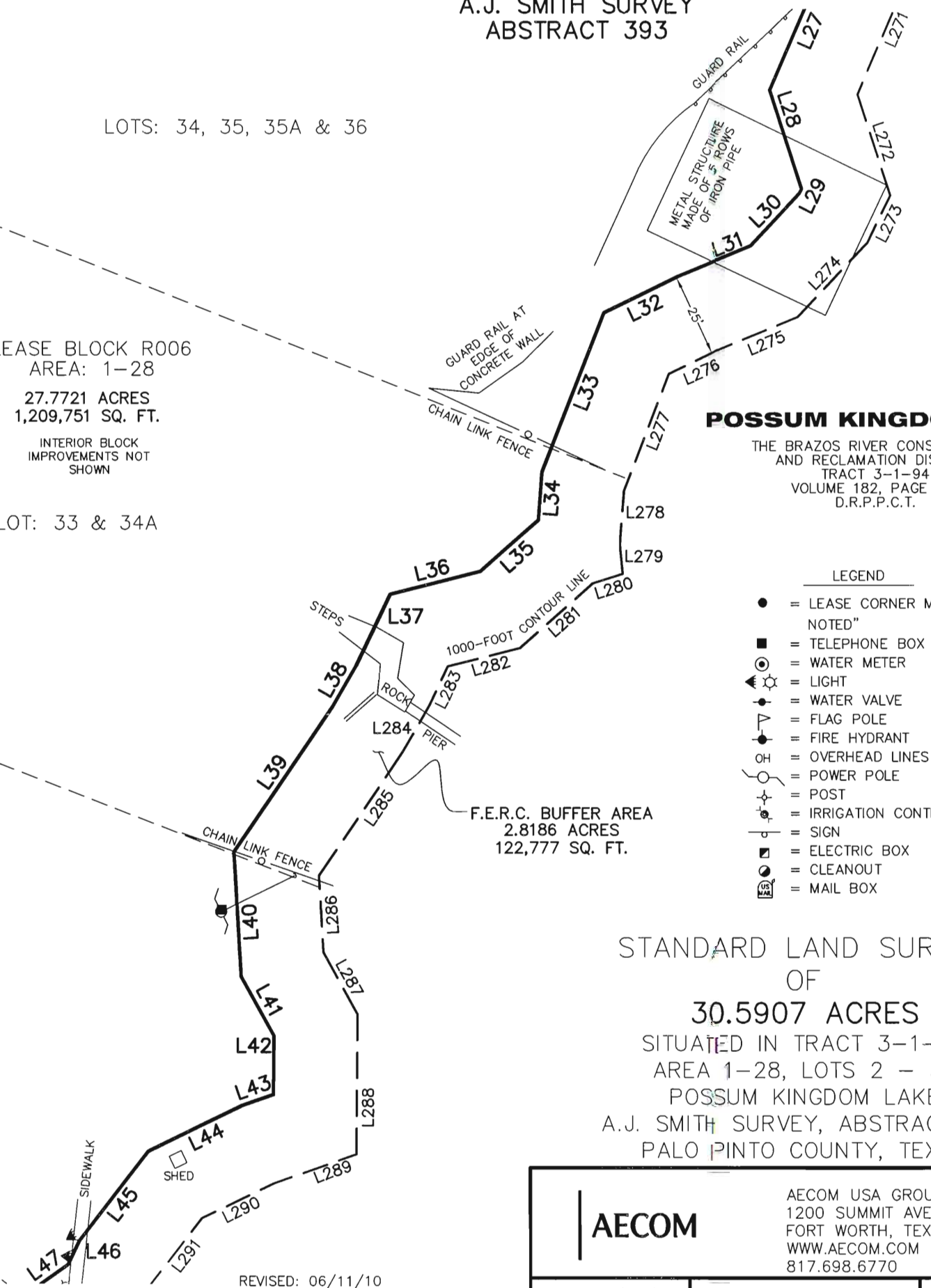
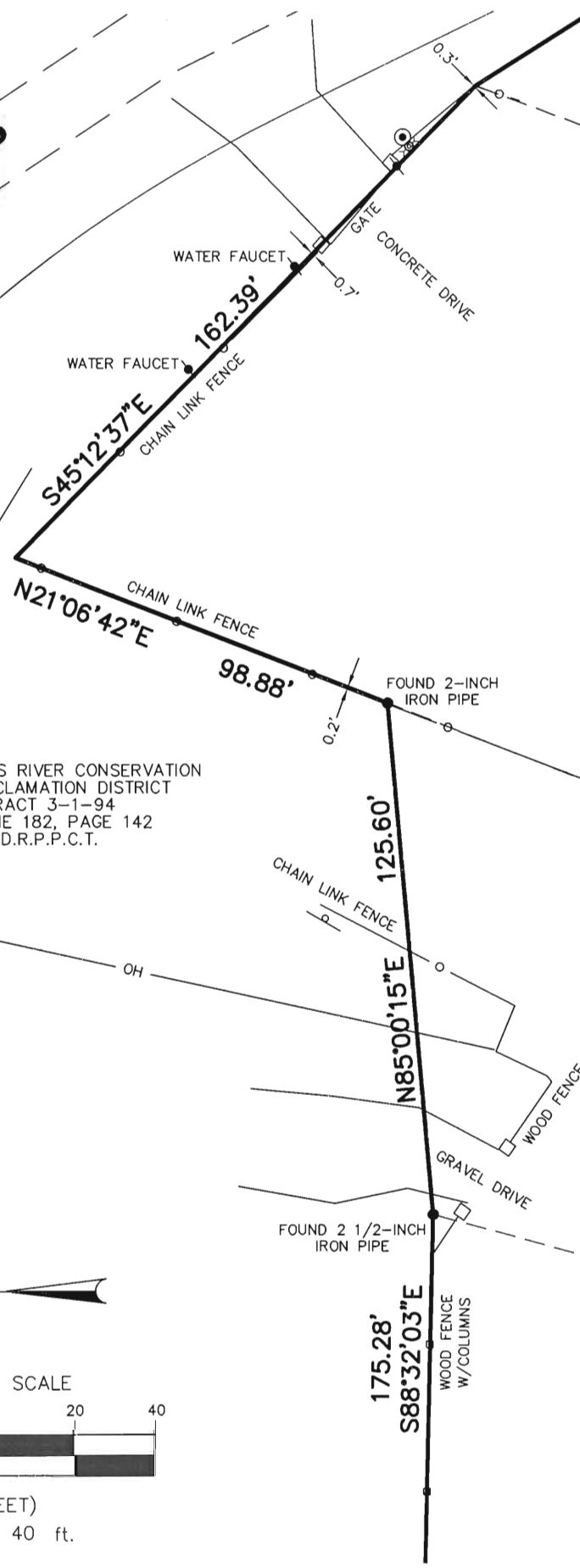
**LAVILLA ROAD**  
SEE NOTE 5

THE BRAZOS RIVER CONSERVATION  
AND RECLAMATION DISTRICT  
TRACT 3-1-94  
VOLUME 182, PAGE 142  
D.R.P.P.C.T.



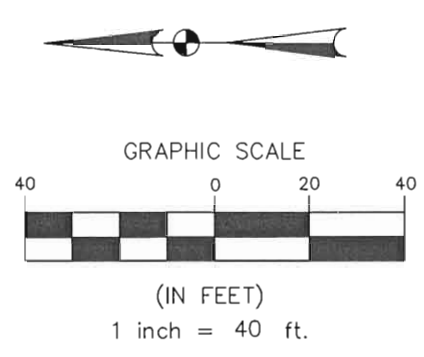
LOT: 32-A-1

LOT: 32-B



NO PART OR PARTS OF THIS DRAWING MAY BE REPRODUCED OR TRANSMITTED IN ANY WAY OR FORM (ELECTRONIC, MECHANICAL, PHOTOCOPYING, OR OTHERWISE) WITHOUT THE EXPRESS WRITTEN PERMISSION OF AECOM.

S:\Survcon\Projects\60102581\3.0 Ref Docs\Drafting\Undeveloped Strips\Blocks\R006\60052528 R006ByR2a.dwg 5/21/2010 12:38:06 PM CDT



THE BRAZOS RIVER CONSERVATION AND RECLAMATION DISTRICT TRACT 3-1-94 VOLUME 182, PAGE 142 D.R.P.P.C.T.

A.J. SMITH SURVEY ABSTRACT 393

LOT: 38

LOT: 37

LEASE BLOCK R006 AREA: 1-28  
27.7721 ACRES  
1,209,751 SQ. FT.  
INTERIOR BLOCK IMPROVEMENTS NOT SHOWN

LOTS: 34, 35, 35A & 36

LOT: 33 & 34A

LAVILLA ROAD  
SEE NOTE 5

POSSUM KINGDOM LAKE

THE BRAZOS RIVER CONSERVATION AND RECLAMATION DISTRICT TRACT 3-1-94 VOLUME 182, PAGE 142 D.R.P.P.C.T.

STANDARD LAND SURVEY OF

30.5907 ACRES

SITUATED IN TRACT 3-1-94  
AREA 1-28, LOTS 2 - 38  
POSSUM KINGDOM LAKE  
A.J. SMITH SURVEY, ABSTRACT 393  
PALO PINTO COUNTY, TEXAS

- LEGEND
- = LEASE CORNER MARKER "AS NOTED"
  - = TELEPHONE BOX
  - ⊙ = WATER METER
  - ☼ = LIGHT
  - ⊕ = WATER VALVE
  - ⚑ = FLAG POLE
  - ⚡ = FIRE HYDRANT
  - OH = OVERHEAD LINES
  - ⊖ = POWER POLE
  - ⊙ = POST
  - ⊕ = IRRIGATION CONTROL VALVE
  - ⊙ = SIGN
  - ⊙ = ELECTRIC BOX
  - ⊙ = CLEANOUT
  - ⊙ = MAIL BOX

REVISED: 06/11/10  
REVISED: 05/21/10 SHEET 16 OF 17

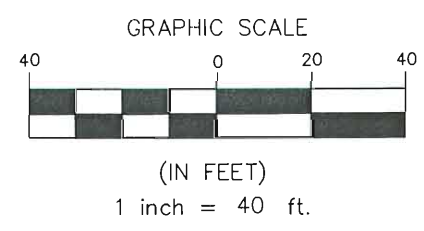
<b>AECOM</b>	AECOM USA GROUP, INC. 1200 SUMMIT AVENUE, SUITE 600 FORT WORTH, TEXAS 76102 WWW.AECOM.COM 817.698.6770	
	Date: 12/17/09	Project No. 60102581.02
		60052528 R006ByR2a.dwg

NO PART OR PARTS OF THIS DRAWING MAY BE REPRODUCED OR RETRANSMITTED IN ANY WAY OR FORM (ELECTRONIC, MECHANICAL, PHOTOCOPYING, OR OTHERWISE) WITHOUT THE EXPRESS WRITTEN PERMISSION OF AECOM.

C:\Survcon\Projects\60102581\3.0 Ref Docs\Drafting\Undeveloped Strips\Blocks\R006\60052528 R006ByR2a.dwg 5/21/2010 12:38:06 PM CDT



A.J. SMITH SURVEY  
ABSTRACT 393



THE BRAZOS RIVER CONSERVATION  
AND RECLAMATION DISTRICT  
TRACT 3-1-94  
VOLUME 182, PAGE 142  
D.R.P.P.C.T.

**LAVILLA ROAD**  
SEE NOTE 5

LEASE BLOCK R006  
AREA: 1-28  
27.7721 ACRES  
1,209,751 SQ. FT.  
INTERIOR BLOCK  
IMPROVEMENTS NOT  
SHOWN  
LOT: 38

F.E.R.C. BUFFER AREA  
2.8186 ACRES  
122,777 SQ. FT.

**POSSUM KINGDOM LAKE**

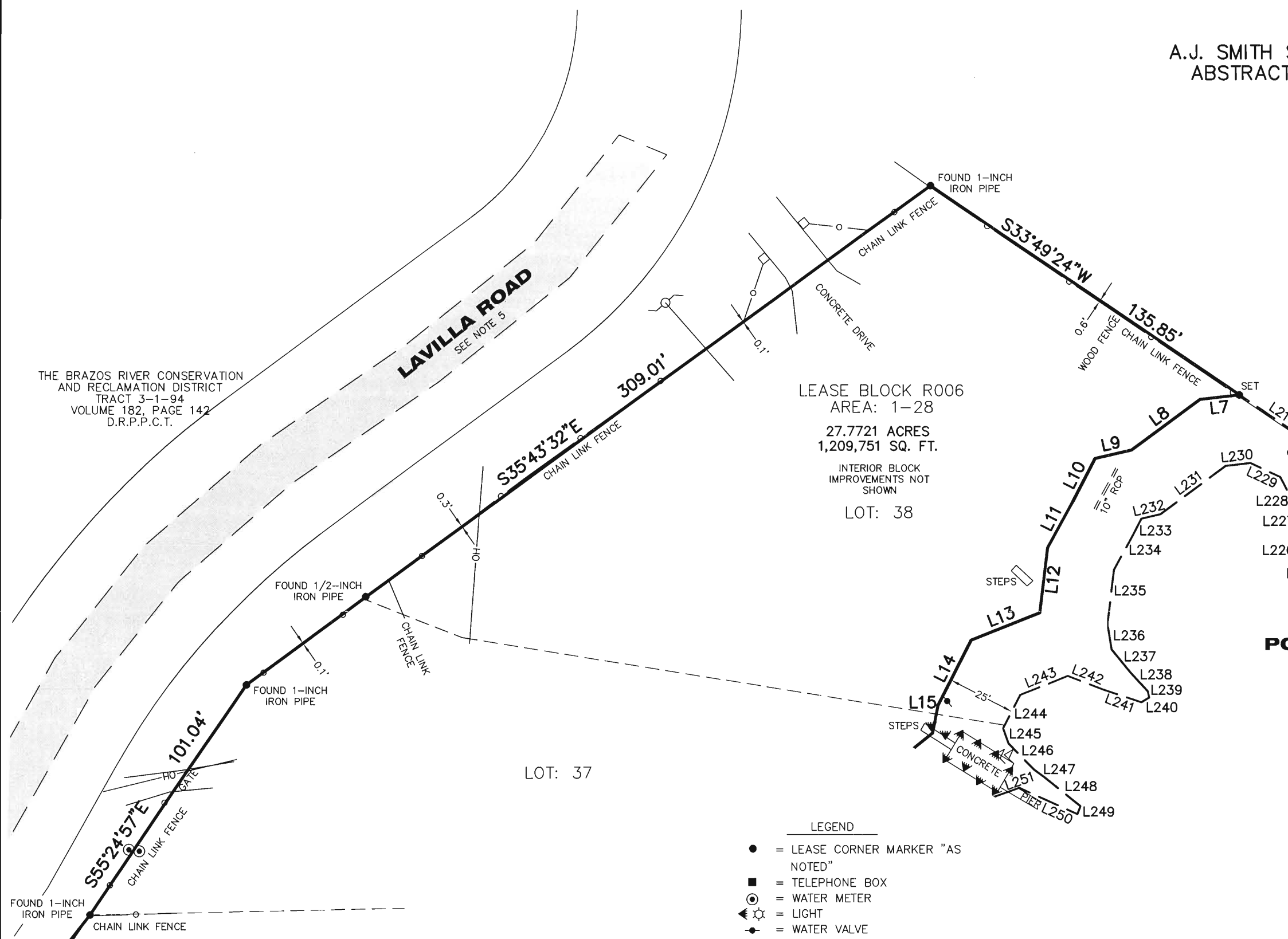
THE BRAZOS RIVER CONSERVATION  
AND RECLAMATION DISTRICT  
TRACT 3-1-94  
VOLUME 182, PAGE 142  
D.R.P.P.C.T.

STANDARD LAND SURVEY  
OF

**30.5907 ACRES**

SITUATED IN TRACT 3-1-94  
AREA 1-28, LOTS 2 - 38

POSSUM KINGDOM LAKE  
A.J. SMITH SURVEY, ABSTRACT 393  
PALO PINTO COUNTY, TEXAS



LOT: 37

- LEGEND**
- = LEASE CORNER MARKER "AS NOTED"
  - = TELEPHONE BOX
  - ⊙ = WATER METER
  - ⚡ = LIGHT
  - ⊕ = WATER VALVE
  - ⚓ = FLAG POLE
  - ⚡ = FIRE HYDRANT
  - OH = OVERHEAD LINES
  - ⚡ = POWER POLE
  - ⊕ = POST
  - ⊕ = IRRIGATION CONTROL VALVE
  - ⊕ = SIGN
  - ⊕ = ELECTRIC BOX
  - ⊕ = CLEANOUT
  - ⊕ = MAIL BOX

REVISED: 06/11/10  
REVISED: 05/21/10 SHEET 17 OF 17

<b>AECOM</b>	AECOM USA GROUP, INC. 1200 SUMMIT AVENUE, SUITE 600 FORT WORTH, TEXAS 76102 WWW.AECOM.COM 817.698.6770		
	Date: 12/17/09	Project No. 60102581.02	60052528 R006ByR2a.dwg

NO PART OR PARTS OF THIS DRAWING MAY BE REPRODUCED OR TRANSMITTED IN ANY WAY OR FORM (ELECTRONIC, MECHANICAL, PHOTOCOPYING, OR OTHERWISE) WITHOUT THE EXPRESS WRITTEN PERMISSION OF AECOM.

S:\Survey\Projects\60102581\3.0 Ref Docs\Drafting\Undeveloped Strips\Blocks\R006\60052528 R006ByR2.dwg 5/21/2010 12:38:06 PM CDT