

LINE	BEARING	DISTANCE
L1	S00°31'2"E	11.71'
L2	NOT USED	
L3	NOT USED	
L4	NOT USED	
L5	N26°59'15"W	95.52'
L6	N33°09'36"E	14.42'
L7	N26°47'35"E	12.55'
L8	N07°06'38"E	53.78'
L9	N04°06'27"E	60.90'
L10	N09°24'53"W	23.57'
L11	N00°44'01"W	14.11'
L12	N04°28'03"W	5.95'
L13	N22°54'38"E	8.09'
L14	N00°51'32"W	23.74'
L15	N09°20'26"E	15.37'
L16	N09°20'26"E	12.29'
L17	N04°45'31"W	11.59'
L18	N17°44'33"E	12.90'
L19	N05°37'54"E	14.03'
L20	N11°45'42"E	18.83'
L21	N33°01'01"E	13.83'
L22	N51°15'48"E	11.70'
L23	N31°08'04"E	16.70'
L24	N39°50'08"E	10.73'
L25	N54°58'08"E	21.49'
L26	N33°07'35"E	2.59'
L27	N75°47'26"E	9.37'
L28	S27°31'46"E	11.14'
L29	N86°31'57"E	24.90'
L30	S54°57'50"E	5.64'
L31	S77°28'08"E	5.60'
L32	S69°34'03"E	15.28'
L33	N80°44'27"E	16.00'
L34	S74°01'48"E	11.13'
L35	S54°56'46"E	9.36'
L36	N88°55'25"E	17.53'
L37	N86°06'56"E	17.16'
L38	S81°07'40"E	19.93'
L39	N50°42'56"E	3.55'
L40	S80°58'43"E	8.89'
L41	S88°28'54"E	17.07'
L42	S87°06'00"E	11.76'
L43	S53°29'31"E	16.00'
L44	S49°22'01"E	28.02'
L45	N86°36'41"E	10.28'
L46	S29°38'26"E	8.29'
L47	S75°33'08"E	24.65'
L48	S78°39'49"E	13.35'
L49	S62°49'42"E	14.07'
L50	N79°11'46"E	27.42'
L51	N89°37'39"E	7.05'
L52	N68°02'23"E	21.19'
L53	S77°01'44"E	13.70'
L54	N54°34'04"E	2.69'
L55	S80°03'43"E	13.02'
L56	N82°23'10"E	11.14'
L57	S69°29'28"E	5.54'
L58	S14°57'34"E	5.00'
L59	S76°40'54"E	31.82'
L60	S78°14'25"E	26.08'
L61	N89°14'48"E	16.12'
L62	N62°27'33"E	14.32'
L63	S50°59'11"E	24.46'
L64	S57°41'27"E	12.31'
L65	S62°00'56"E	10.07'
L66	S31°27'47"E	20.99'
L67	S37°39'04"E	22.42'

LINE	BEARING	DISTANCE
L68	S79°37'45"E	2.44'
L69	S29°46'20"E	8.31'
L70	S71°53'37"E	13.31'
L71	S57°45'30"E	26.24'
L72	S02°48'31"W	10.14'
L73	S10°08'42"E	25.76'
L74	S71°09'12"E	32.69'
L75	S69°53'34"E	7.13'
L76	S38°17'34"E	5.16'
L77	S74°19'01"E	26.73'
L78	S89°33'54"E	9.16'
L79	N88°02'07"E	21.03'
L80	S70°35'22"E	14.24'
L81	S21°39'03"E	7.92'
L82	S47°19'37"E	26.47'
L83	N86°36'50"E	5.92'
L84	S38°32'52"E	4.15'
L85	S56°23'40"E	12.32'
L86	S56°34'38"E	11.94'
L87	S84°07'20"E	10.56'
L88	S76°52'55"E	11.41'
L89	S85°10'45"E	10.52'
L90	S45°44'48"E	2.37'
L91	N80°26'59"E	20.59'
L92	N67°52'03"E	7.30'
L93	S72°53'13"E	17.81'
L94	N66°54'02"E	4.99'
L95	S63°16'33"E	24.85'
L96	S77°10'34"E	11.24'
L97	S39°30'09"E	5.29'
L98	S59°24'37"E	12.00'
L99	S87°19'40"E	5.52'
L100	S78°14'02"E	4.37'
L101	S79°43'21"E	5.38'
L102	S62°47'56"E	18.53'
L103	S71°26'31"E	10.30'
L104	S73°34'41"E	12.88'
L105	S62°47'04"E	21.77'
L106	S88°46'56"E	26.95'
L107	S68°24'12"E	16.17'
L108	S58°41'44"E	6.08'
L109	S59°57'27"E	10.04'
L110	S29°55'28"E	5.10'
L111	S58°40'51"E	20.99'
L112	S78°59'26"E	26.34'
L113	N85°43'38"E	18.64'
L114	S64°06'08"E	9.00'
L115	S69°38'16"E	15.16'
L116	S54°50'21"E	21.42'
L117	S88°43'37"E	21.89'
L118	N85°02'23"E	27.07'
L119	S46°31'40"E	2.05'
L120	N81°52'55"E	13.03'
L121	S64°40'09"E	5.32'
L122	S33°39'49"E	5.66'
L123	S54°52'32"E	14.58'
L124	S52°09'11"E	15.77'
L125	S70°21'07"E	14.35'
L126	S51°11'28"E	7.34'
L127	S88°31'37"E	23.04'
L128	N52°35'00"E	16.36'
L129	N77°26'10"E	18.74'
L130	S81°22'33"E	14.01'
L131	N65°34'23"E	7.41'
L132	S89°48'10"E	4.37'
L133	S61°40'24"E	14.24'
L134	S77°40'13"E	13.95'

LINE	BEARING	DISTANCE
L135	S71°47'48"E	14.48'
L136	N86°02'48"E	10.50'
L137	S71°56'06"E	19.12'
L138	N77°05'27"E	15.79'
L139	S86°09'22"E	9.75'
L140	S75°16'53"E	16.67'
L141	N88°35'46"E	16.10'
L142	N45°11'20"E	15.13'
L143	N68°17'51"E	2.49'
L144	S43°52'07"E	1.76'
L145	N75°04'06"E	27.44'
L146	S70°28'19"E	7.25'
L147	N87°30'38"E	19.19'
L148	S60°21'37"E	8.99'
L149	S72°27'10"E	13.49'
L150	S74°15'39"E	21.51'
L151	S82°46'26"E	20.34'
L152	S79°39'07"E	17.99'
L153	N82°22'42"E	7.73'
L154	S48°17'02"E	7.34'
L155	N86°38'28"E	3.14'
L156	S36°36'50"E	9.91'
L157	S30°04'18"E	15.20'
L158	S46°27'34"E	15.72'
L159	S35°15'19"E	11.49'
L160	S42°05'19"E	26.75'
L161	S77°19'42"E	14.75'
L162	S47°52'19"E	21.10'
L163	N66°42'35"E	38.02'
L164	N75°10'55"E	16.91'
L165	S81°54'23"E	35.09'
L166	N82°07'44"E	29.36'
L167	N57°25'13"E	18.45'
L168	N59°07'04"E	8.22'
L169	N29°20'21"E	8.69'
L170	N68°41'31"E	14.10'
L171	S36°08'26"E	15.71'
L172	S31°50'50"E	12.10'
L173	S88°29'29"E	29.36'
L174	S56°56'35"E	8.33'
L175	N67°31'25"E	9.22'
L176	S75°41'07"E	2.97'
L177	S42°58'25"E	11.67'
L178	N77°57'44"E	28.09'
L179	N69°03'46"E	4.39'
L180	S51°31'55"E	4.94'
L181	S66°12'38"E	30.74'
L182	N44°44'06"E	5.47'
L183	S43°47'17"E	10.36'
L184	S72°20'31"E	20.57'
L185	S78°28'27"E	31.41'
L186	N81°58'45"E	34.51'
L187	N70°58'36"E	14.11'
L188	S67°53'43"E	5.10'
L189	N75°47'49"E	17.32'
L191	S72°05'35"E	21.99'
L192	N65°20'15"E	4.34'
L193	S65°32'11"E	6.12'
L194	S25°23'06"E	8.72'
L195	S50°24'31"E	24.53'
L196	S69°07'00"E	14.35'
L197	S61°48'28"E	19.77'
L198	N76°00'23"E	7.97'
L199	N83°40'53"E	14.82'
L200	S85°28'50"E	3.62'
L201	N67°32'51"E	28.09'
L202	N75°26'44"E	4.38'

LINE	BEARING	DISTANCE
L203	N47°59'13"E	30.72'
L204	N26°28'02"E	18.40'
L205	N89°04'03"E	32.78'
L206	N67°20'22"E	19.89'
L207	N87°39'56"E	3.76'
L208	N88°44'54"E	21.99'
L209	S85°41'25"E	7.66'
L210	N84°16'58"E	18.72'
L211	N65°56'19"E	7.90'
L212	N64°11'12"E	5.41'
L213	S69°19'08"E	1.54'
L214	S47°03'32"E	13.75'
L215	N80°39'33"E	33.98'
L216	N30°12'15"E	12.63'
L217	N78°31'50"E	5.85'
L218	N87°57'24"E	19.90'
L219	S83°30'40"E	7.59'
L220	N89°54'37"E	12.79'
L221	N78°33'25"E	12.55'
L222	S69°56'33"E	8.19'
L223	S87°06'54"E	23.55'
L224	N65°00'23"E	21.00'
L225	N19°05'49"E	4.65'
L226	N83°44'39"E	10.87'
L227	S72°21'32"E	12.61'
L228	N78°46'45"E	46.23'
L229	N76°41'44"E	41.79'
L230	N49°01'16"E	13.82'
L231	S43°06'40"E	5.62'
L232	N86°19'29"E	23.09'
L233	N57°12'33"E	4.85'
L234	S89°14'28"E	6.89'
L235	N80°34'56"E	7.31'
L236	N54°12'14"E	15.55'
L237	N48°38'48"E	1.04'
L238	N79°37'30"E	0.71'
L239	N72°15'02"E	4.09'
L240	S69°43'27"E	6.16'
L241	N87°51'51"E	32.95'
L242	S78°49'49"E	12.53'
L243	S58°33'22"E	18.14'
L244	N79°41'10"E	21.95'
L245	N53°08'18"E	8.91'
L246	S64°55'55"E	11.89'
L247	S89°04'25"E	20.49'
L248	N89°26'01"E	13.35'
L249	S78°52'36"E	33.09'
L250	N53°24'08"E	20.91'
L251	N85°50'12"E	3.39'
L252	N81°05'02"E	8.77'
L253	S58°12'11"E	20.42'
L254	S76°16'33"E	33.02'
L255	N67°29'05"E	21.96'
L256	N72°01'40"E	11.79'
L257	N63°11'20"E	8.02'
L258	N55°32'39"E	10.39'
L259	N35°44'35"E	14.20'
L260	N84°19'24"E	8.31'
L261	N70°37'32"E	16.11'
L262	N55°07'39"E	22.72'
L263	N82°12'43"E	33.01'
L264	N80°19'09"E	18.52'
L265	N85°23'09"E	13.41'
L266	N79°55'39"E	22.05'
L267	N88°19'29"E	41.56'
L268	N63°42'58"E	3.19'
L269	S71°41'50"E	24.12'

LINE	BEARING	DISTANCE
L270	N67°42'06"E	27.11'
L271	N53°45'40"E	20.87'
L272	N62°09'38"E	17.85'
L273	N49°59'46"E	16.30'
L274	S87°13'37"E	21.30'
L275	N61°24'33"E	15.81'
L276	S60°34'13"E	7.64'
L277	S87°10'26"E	30.82'
L278	N75°22'24"E	19.25'
L279	N54°01'13"E	21.76'
L280	N30°31'23"E	6.32'
L281	N48°42'22"E	48.40'
L282	S88°03'26"E	16.43'
L283	S83°56'19"E	12.89'
L284	N74°50'23"E	17.45'
L285	N66°21'11"E	28.77'
L286	N48°35'35"E	6.57'
L287	N61°14'24"E	2.23'
L288	S61°41'56"E	3.82'
L289	N69°58'48"E	12.28'
L290	N87°06'58"E	14.97'
L291	N72°17'26"E	13.43'
L292	N86°10'16"E	10.82'
L293	N87°14'8"E	48.93'
L294	N46°48'50"E	22.11'
L295	N80°10'50"E	4.25'
L296	N72°19'55"E	17.95'
L297	N51°07'03"E	9.47'
L298	N59°24'31"E	11.99'
L299	N67°14'41"E	11.37'
L300	N34°46'45"E	12.41'
L301	N73°19'20"E	58.14'
L302	N67°54'26"E	6.45'
L303	S72°30'04"E	8.00'
L304	N72°16'44"E	22.40'
L305	N78°38'47"E	23.03'
L306	N30°48'31"E	14.01'
L307	S75°50'50"E	6.99'
L308	N60°24'12"E	18.70'
L309	N36°22'13"E	5.77'
L310	N83°10'08"E	9.42'
L311	N57°45'14"E	9.87'
L312	N55°42'03"E	38.54'
L313	N41°03'00"E	2.54'
L314	S85°15'32"E	36.77'
L315	N77°24'51"E	113.08'
L316	N51°02'28"E	41.66'
L317	N44°21'44"E	21.50'
L318	N10°56'34"E	5.84'
L319	N63°31'38"E	14.22'
L320	N69°20'02"E	61.80'
L321	N31°29'27"E	15.55'
L322	N36°39'49"E	3.58'
L323	N54°23'12"E	8.18'
L324	N26°59'15"W	29.01'
L325	N26°47'35"E	5.40'
L326	N07°06'38"E	48.78'
L327	N04°06'27"E	57.28'
L328	N09°24'53"W	22.50'
L329	N00°44'01"W	15.19'
L330	N04°28'03"W	11.22'
L331	N22°54'38"E	8.92'
L332	N00°	

LINE	BEARING	DISTANCE
L815	N56°10'11"E	13.47'
L816	N36°22'13"E	12.23'
L817	N83°10'08"E	14.60'
L818	N57°45'14"E	2.88'
L819	N55°42'03"E	30.53'
L820	N41°03'00"E	5.12'
L821	N51°25'58"E	5.60'
L822	N73°30'07"E	5.77'
L823	N88°15'32"E	4.65'
L824	N77°24'51"E	103.42'
L825	N51°02'28"E	34.35'
L826	N44°21'44"E	12.53'
L827	N10°56'34"E	7.46'
L828	N46°28'31"E	7.34'
L829	N61°23'21"E	8.95'
L830	N63°57'56"E	13.27'
L831	N69°20'02"E	54.48'
L832	N31°29'27"E	8.11'
L833	N56°39'49"E	8.60'
L834	N54°23'12"E	23.19'
L835	N77°45'58"E	5.54'
L836	S00°13'12"E	27.97'

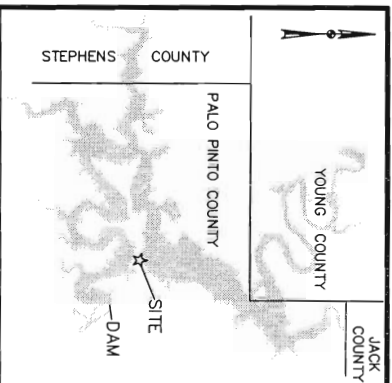
LINE	BEARING	DISTANCE
L768	N19°07'01"E	15.79'
L769	N60°29'56"E	8.30'
L770	S64°25'04"E	9.34'
L771	S12°42'55"W	14.60'
L772	S60°34'13"E	5.60'
L773	S87°10'26"E	21.08'
L774	N75°22'24"E	10.70'
L775	N54°01'13"E	11.85'
L776	N30°31'23"E	5.12'
L777	N48°42'22"E	62.79'
L778	N46°41'20"E	6.77'
L779	S32°50'09"E	3.93'
L780	N68°12'20"E	10.41'
L781	S07°02'29"E	6.17'
L782	S88°03'26"E	9.39'
L783	S83°56'19"E	9.10'
L784	N74°50'23"E	10.91'
L785	N11°40'06"E	10.61'
L786	N60°50'36"E	6.28'
L787	S73°34'10"E	14.10'
L788	N48°35'35"E	5.44'
L789	N61°14'24"E	18.59'
L790	S61°41'56"E	6.20'
L791	N69°58'48"E	12.94'
L792	S64°51'12"E	5.09'
L793	N87°06'58"E	3.24'
L794	N72°17'26"E	13.22'
L795	N86°10'16"E	14.11'
L796	N87°17'43"E	39.96'
L797	N46°48'50"E	20.38'
L798	N80°10'50"E	10.03'
L799	N72°19'55"E	11.56'
L800	N51°07'03"E	6.60'
L801	N59°24'31"E	15.52'
L802	N67°14'41"E	5.80'
L803	N34°46'45"E	14.73'
L804	S49°49'50"E	0.64'
L805	N73°15'20"E	64.60'
L806	NOT USED	
L807	N67°54'26"E	14.27'
L808	S72°30'04"E	9.06'
L809	N72°16'47"E	16.86'
L810	N78°38'44"E	12.33'
L811	N30°48'31"E	11.65'
L812	N49°09'02"E	11.57'
L813	S75°50'50"E	11.33'
L814	N60°24'12"E	7.74'

LINE	BEARING	DISTANCE
L701	N38°42'59"E	8.82'
L702	N88°40'38"E	14.26'
L703	S43°06'40"E	10.37'
L704	N86°19'29"E	4.79'
L705	N57°12'23"E	5.89'
L706	S89°14'28"E	12.11'
L707	N39°41'41"W	11.50'
L708	N58°37'33"E	10.16'
L709	N52°19'49"E	8.65'
L710	N80°34'56"E	14.13'
L711	N64°12'44"E	8.48'
L712	N48°38'48"E	6.75'
L713	N79°37'30"E	6.03'
L714	N72°15'02"E	4.54'
L715	N69°28'01"E	5.48'
L716	S72°46'52"E	8.64'
L717	S69°43'27"E	4.24'
L718	N87°51'51"E	30.91'
L719	S78°49'49"E	5.69'
L720	N58°33'22"E	20.75'
L721	S77°45'57"E	7.24'
L722	N79°41'10"E	6.85'
L723	N53°08'18"E	15.96'
L724	S73°52'26"E	11.65'
L725	S64°55'55"E	11.00'
L726	S89°04'25"E	14.81'
L727	N89°26'01"E	15.59'
L728	S78°52'36"E	24.59'
L729	N53°24'08"E	17.12'
L730	N85°50'12"E	9.62'
L731	N81°25'18"E	20.65'
L732	S76°34'26"E	9.74'
L733	S00°16'07"E	6.42'
L734	S58°12'11"E	10.31'
L735	N80°05'09"E	13.31'
L736	S89°34'39"E	4.15'
L737	S22°37'28"E	7.81'
L738	N58°02'36"E	12.71'
L739	S69°35'07"E	3.06'
L740	N41°48'02"E	7.87'
L741	N65°48'05"E	3.27'
L742	S28°28'08"E	4.39'
L743	N63°11'20"E	4.42'
L744	N55°32'39"E	4.35'
L745	N35°44'35"E	13.02'
L746	N47°01'16"W	8.83'
L747	N73°21'29"E	6.64'
L748	S73°02'52"E	7.08'
L749	N84°19'24"E	13.66'
L750	N70°37'32"E	9.71'
L751	N55°07'39"E	25.33'
L752	N82°12'43"E	38.62'
L753	N80°19'09"E	19.21'
L754	N85°23'09"E	13.32'
L755	N79°55'39"E	22.70'
L756	N88°19'29"E	37.95'
L757	N63°42'58"E	12.54'
L758	S83°51'12"E	5.27'
L759	S33°07'59"E	6.91'
L760	S71°41'50"E	11.32'
L761	N67°42'06"E	14.80'
L762	N53°45'40"E	17.02'
L763	N62°09'38"E	19.65'
L764	N49°59'46"E	15.77'
L765	N35°31'21"E	6.96'
L766	N59°18'18"E	4.98'
L767	S87°13'37"E	20.44'

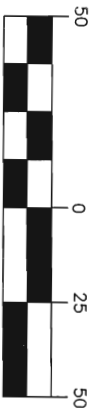
LINE	BEARING	DISTANCE
L634	N81°58'45"E	27.79'
L635	N70°58'36"E	15.62'
L636	N80°22'33"E	6.83'
L637	N67°53'43"E	4.79'
L638	S75°47'49"E	10.75'
L639	S80°36'37"E	4.64'
L640	S85°51'50"E	17.86'
L641	S48°30'36"E	4.07'
L642	S75°41'08"E	5.33'
L643	N65°20'15"E	11.49'
L644	S44°17'32"E	11.39'
L645	N89°18'53"E	5.95'
L646	S56°06'39"E	9.08'
L647	S15°36'36"E	11.74'
L648	S50°24'31"E	14.86'
L649	S69°10'00"E	11.83'
L650	S61°48'28"E	11.73'
L651	N76°00'23"E	11.17'
L652	S85°28'50"E	7.94'
L653	N45°19'31"E	11.38'
L654	N32°19'14"E	7.96'
L655	N40°14'45"E	5.92'
L656	S09°54'27"E	7.17'
L657	S56°11'28"E	5.55'
L658	N47°59'13"E	19.86'
L659	N26°28'02"E	17.38'
L660	N14°58'18"E	8.01'
L661	N32°09'47"E	3.61'
L662	N60°30'27"E	8.13'
L663	N84°31'07"E	31.68'
L664	S01°25'18"E	6.03'
L665	N88°07'40"E	4.21'
L666	N00°21'06"E	5.79'
L667	N87°39'56"E	27.85'
L668	N88°44'54"E	23.44'
L669	N85°41'25"E	6.68'
L670	N84°16'58"E	12.49'
L671	N63°56'19"E	3.48'
L672	N64°11'12"E	7.36'
L673	N73°48'42"E	10.17'
L674	S47°03'32"E	14.85'
L675	S67°03'32"E	6.40'
L676	N80°39'33"E	9.93'
L677	N30°12'15"E	12.09'
L678	N78°37'50"E	22.58'
L679	S86°23'07"E	5.68'
L680	N87°57'24"E	14.75'
L681	S83°30'40"E	8.02'
L682	N89°54'37"E	8.87'
L683	N78°33'25"E	17.12'
L684	S69°56'33"E	11.47'
L685	S87°06'54"E	13.57'
L686	N65°00'23"E	4.20'
L687	N19°05'49"E	14.33'
L688	N59°21'07"E	8.76'
L689	N73°43'03"E	10.24'
L690	S08°38'22"E	9.43'
L691	N83°44'39"E	11.62'
L692	S72°21'32"E	11.46'
L693	N12°20'16"W	11.15'
L694	N48°52'37"E	9.38'
L695	S51°31'55"E	13.20'
L696	N26°09'46"E	11.87'
L697	N62°55'41"E	5.66'
L698	N85°40'07"E	8.03'
L699	N76°41'44"E	19.15'
L700	N49°01'16"E	12.37'

LINE	BEARING	DISTANCE
L567	N14°33'56"E	13.01'
L568	S65°02'07"E	9.48'
L569	S51°31'50"E	12.31'
L570	N55°52'49"E	5.37'
L571	S67°03'30"E	2.64'
L572	S46°20'44"E	8.92'
L573	S03°47'44"W	3.87'
L574	S72°27'10"E	18.47'
L575	N19°30'42"E	5.64'
L576	N87°09'33"E	7.83'
L577	S07°13'37"E	8.82'
L578	S82°46'26"E	19.16'
L579	S79°39'07"E	14.71'
L580	N82°22'42"E	14.18'
L581	S66°13'31"E	5.91'
L582	S48°17'06"E	13.67'
L583	N40°34'45"E	7.73'
L584	N16°05'14"W	4.09'
L585	N74°46'53"E	5.77'
L586	S79°08'34"E	11.80'
L587	S36°36'50"E	31.13'
L588	S30°04'18"E	13.03'
L589	S46°27'34"E	14.59'
L590	S35°13'10"E	12.45'
L591	S42°05'19"E	17.31'
L592	S77°19'42"E	13.38'
L593	S47°52'19"E	11.62'
L594	N66°42'35"E	23.82'
L595	N75°10'55"E	10.04'
L596	N50°47'56"E	12.60'
L597	N89°49'48"E	8.66'
L598	N59°02'04"E	4.69'
L599	S85°32'49"E	12.71'
L600	S12°37'38"E	9.51'
L601	S81°54'23"E	12.54'
L602	N82°07'14"E	20.38'
L603	N57°25'13"E	4.94'
L604	N21°47'41"E	6.86'
L605	N73°56'32"E	8.29'
L606	N29°20'21"E	7.37'
L607	N68°41'31"E	35.41'
L608	N37°44'40"E	8.48'
L609	S78°06'48"E	19.69'
L610	S38°54'46"W	15.19'
L611	S36°08'26"E	13.94'
L612	N49°03'03"E	6.70'
L613	S71°46'33"E	8.69'
L614	S30°46'24"W	6.01'
L615	N83°41'07"W	5.19'
L616	S14°27'31"E	7.43'
L617	S68°29'29"E	12.87'
L618	S86°33'12"E	4.35'
L619	S56°56'35"E	4.43'
L620	N67°31'25"E	7.57'
L621	S26°59'54"E	2.55'
L622	S75°41'07"E	14.37'
L623	S42°58'25"E	4.85'
L624	N77°57'44"E	11.98'
L625	N69°03'46"E	9.16'
L626	N84°01'21"E	9.29'
L627	S51°31'55"E	13.20'
L628	S66°12'38"E	10.32'
L629	N44°44'06"E	11.34'
L630	S63°26'27"E	7.68'
L631	S43°47'17"E	22.36'
L632	S72°20'31"E	12.87'
L633	S78°28'27"E	25.77'

LINE	BEARING	DISTANCE
L500	S66°48'23"E	4.91'
L501	S07°02'20"E	7.47'
L502	S64°06'08"E	2.84'
L503	S69°38'16"E	5.70'
L504	S83°38'13"E	10.64'
L505	S45°07'33"E	5.30'
L506	S37°55'15"E	4.45'
L507	S54°50'21"E	9.36'
L508	S88°43'37"E	12.91'
L509	N85°02'23"E	13.13'
L510	N38°33'39"E	4.38'
L511	N79°18'42"E	4.78'
L512	N44°39'36"E	6.09'
L513	S68°23'05"E	4.89'
L514	S66°54'41"E	4.77'
L515	S46°31'40"E	5.46'
L516	N81°52'55"E	5.54'
L517	S80°22'53"E	5.93'
L518	S64°40'09"E	10.19'
L519	S66°50'20"E	5.93'
L520	S33°39'49"E	8.34'
L521	S54°52'32"E	10.49'
L522	S52°09'11"E	12.36'
L523	S70°21'07"E	14.56'
L524	S51°11'28"E	3.12'
L525	S88°31'37"E	5.77'
L526	N19°02'23"E	7.41'
L527	N29°28'44"W	8.55'
L528	N53°53'32"E	11.90'
L529	S80°22'34"E	5.08'
L530	S22°28'01"W	8.46'
L531	S89°04'09"E	8.71'
L532	N86°43'18"E	6.11'
L533	S62°12'12"E	2.92'
L534	N77°26'10"E	7.04'
L535	N49°03'26"E	8.02'
L536	S51°10'50"E	8.67'
L537	S81°22'33"E	3.09'
L538	N65°34'23"E	4.74'
L539	N85°52'07"E	3.88'
L540	S89°48'10"E	10.49'
L541	S82°52'24"E	6.74'
L542	S42°04'08"E	3.92'
L543	S61°40'24"E	9.11'
L544	S77°40'13"E	11.72'
L545	N20°08'13"E	1.91'
L546	S79°00'59"E	9.20'
L547	S10°29'53"E	3.49'
L548	N86°02'48"E	10.47'
L549	S71°56'06"E	17.06'
L550	N43°24'32"E	6.28'
L551	S76°12'19"E	10.20'
L552	N57°51'25"E	5.55'
L553	S53°28'01"E	6.04'
L554	N87°31'54"E	10.70'
L555	S85°04'32"E	8.14'
L55		



VICINITY MAP
NOT TO SCALE

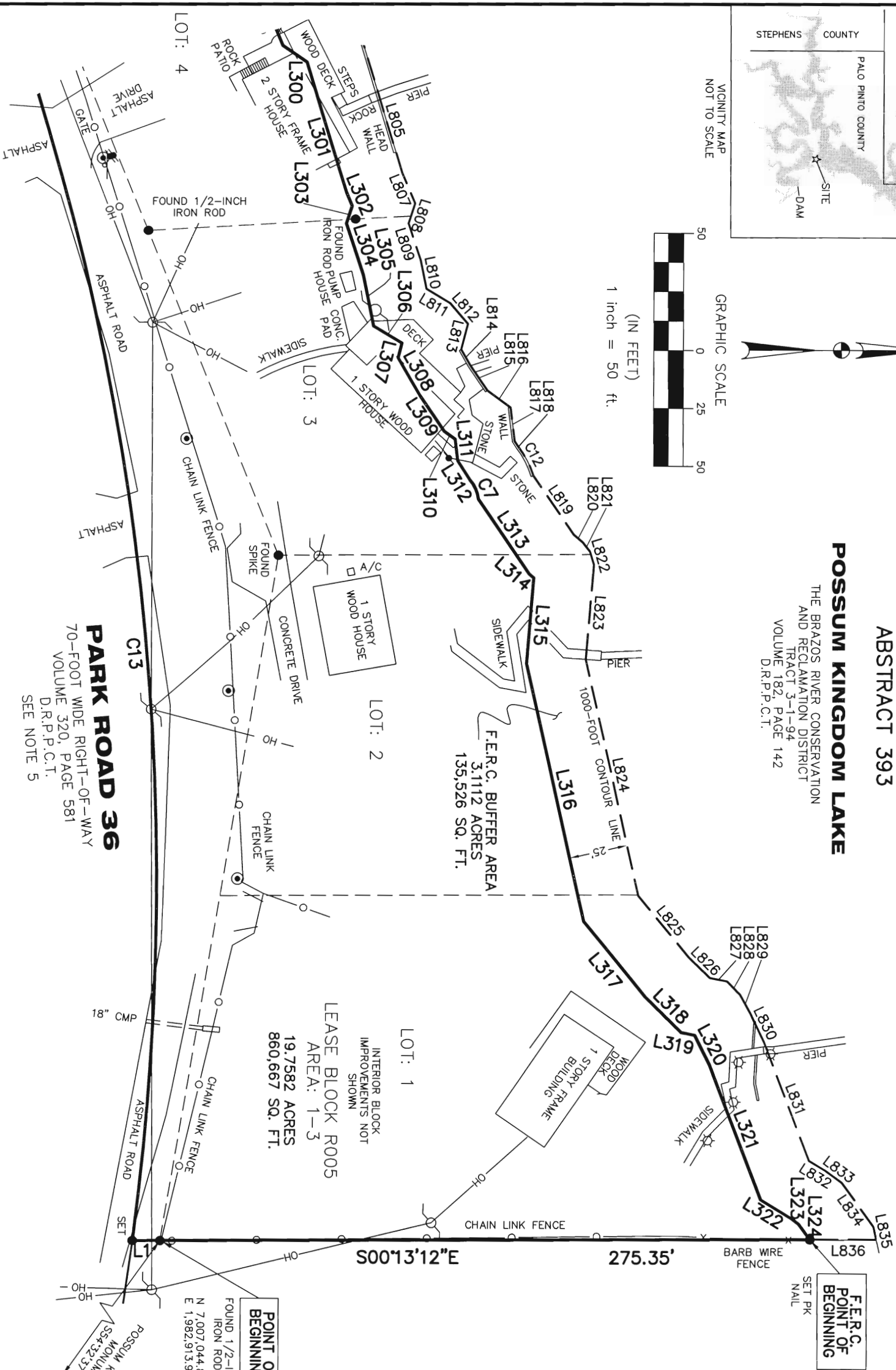


(IN FEET)
1 inch = 50 ft.

A.J. SMITH SURVEY ABSTRACT 393

POSSUM KINGDOM LAKE

THE BRAZOS RIVER CONSERVATION
AND RECLAMATION DISTRICT
TRACT 3-1-94
VOLUME 182, PAGE 142
D.R.P.C.T.



PARK ROAD 36
70-FOOT WIDE RIGHT-OF-WAY
VOLUME 320, PAGE 581
D.R.P.C.T.
SEE NOTE 5

CURVE TABLE					
CURVE	LENGTH	DELTA	RADIUS	CHORD BEARING	CHORD
C7	9.12'	34°45'42"	15.02'	N66°59'15"E	8.98'
C12	14.24'	20°23'05"	40.02'	S62°57'26"W	14.16'
C13	561.20'	27°13'42"	1180.92'	S83°41'14"W	555.93'

LOT: 1
INTERIOR BLOCK
IMPROVEMENTS NOT
SHOWN
LEASE BLOCK R005
AREA: 1-3
19,7582 ACRES
860,667 SQ. FT.

- LEGEND
- = LEASE CORNER MARKER
 - "AS NOTED"
 - + = POST
 - OH = OVERHEAD LINES
 - = POWER POLE
 - ⊙ = WATER METER
 - ⊕ = WATER VALVE
 - ⊖ = IRRIGATION VALVE
 - ⊙ = SIGN
 - ⊙ = LIGHT POLE

ACREAGE TABLE	
LEASE BLOCK:	19,7582 ACRES
F.E.R.C. BUFFER AREA:	3,1112 ACRES
SURVEY BLOCK:	22,8694 ACRES TOTAL

STANDARD LAND SURVEY
OF
22.8694 ACRES
SITUATED IN TRACT 3-1-94
AREA 1-3, LOTS 1 - 30
POSSUM KINGDOM LAKE
A.J. SMITH SURVEY, ABSTRACT 393
PALO PINTO COUNTY, TEXAS

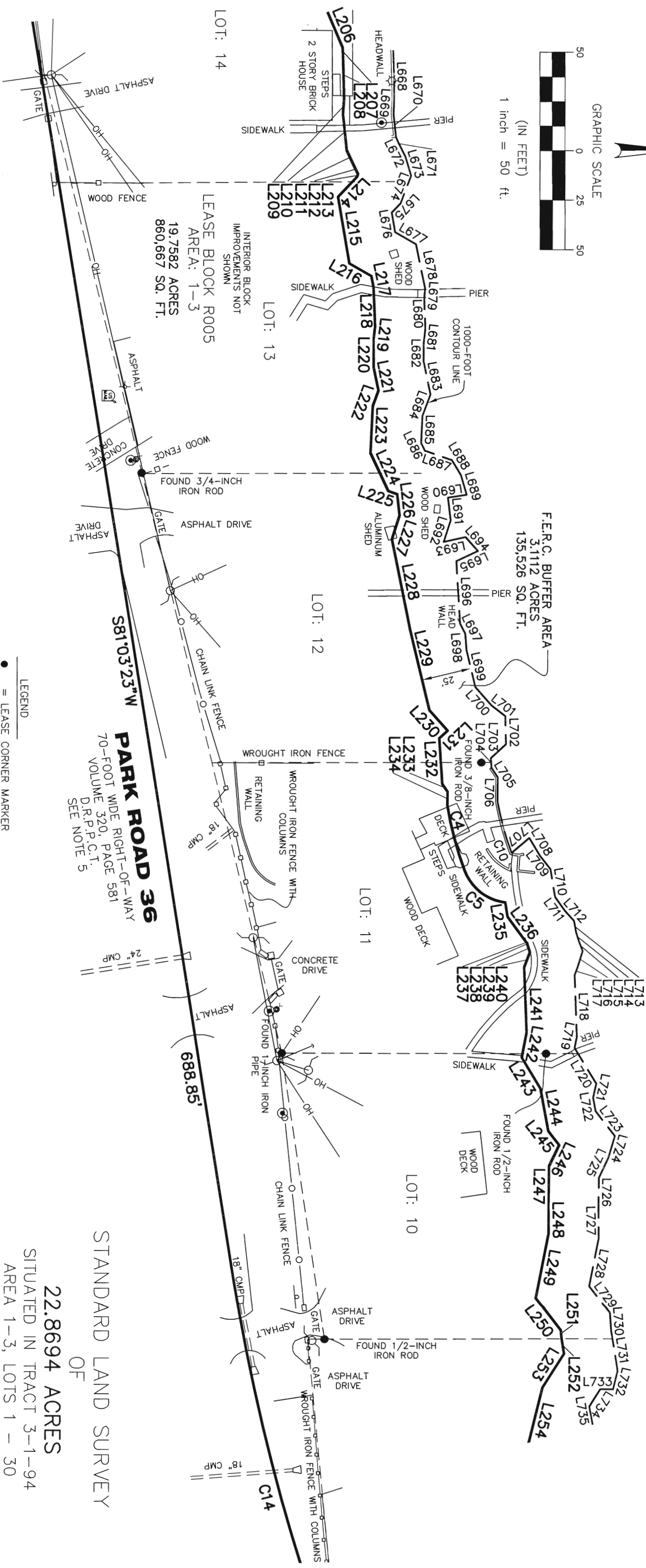
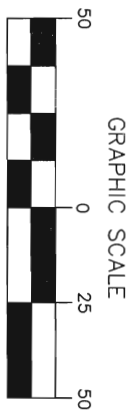
AECOM
AECOM USA GROUP, INC.
1200 SUMMIT AVENUE, SUITE 600
FORT WORTH, TEXAS 76102
WWW.AECOM.COM
817.698.6770

NO PART OF THIS DRAWING MAY BE REPRODUCED OR TRANSMITTED IN ANY WAY OR FORM (ELECTRONIC, MECHANICAL, PHOTOCOPYING, OR OTHERWISE) WITHOUT THE EXPRESS WRITTEN PERMISSION OF AECOM.

A.J. SMITH SURVEY
ABSTRACT 393

POSSUM KINGDOM LAKE

THE BRAZOS RIVER CONSERVATION
AND RECLAMATION DISTRICT
TRACT 3-1-94
VOLUME 182, PAGE 142
D.R.P.C.T.



CURVE TABLE					
CURVE	LENGTH	DELTA	RADIUS	CHORD BEARING	CHORD
C4	33.61'	10°58'50"	175.39'	N75°03'14"E	33.56'
C5	27.20'	62°19'36"	25.00'	N38°24'01"E	25.87'
C10	26.67'	10°09'42"	150.39'	N74°38'40"E	26.64'
C14	212.96'	10°59'00"	1110.92'	S75°33'53"W	212.63'

- LEGEND
- = LEASE CORNER MARKER
"AS NOTED"
 - + = POST
 - OH = OVERHEAD LINES
 - = POWER POLE
 - = WATER METER
 - = WATER VALVE
 - = IRRIGATION VALVE
 - = SIGN
 - = LIGHT POLE

PARK ROAD 36
70-FOOT WIDE RIGHT-OF-WAY
VOLUME 320, PAGE 581
D.R.P.C.T.
SEE NOTE 5

STANDARD LAND SURVEY
OF
22.8694 ACRES
SITUATED IN TRACT 3-1-94
AREA 1-3, LOTS 1 - 30
POSSUM KINGDOM LAKE
PALO PINTO COUNTY, TEXAS

AECOM

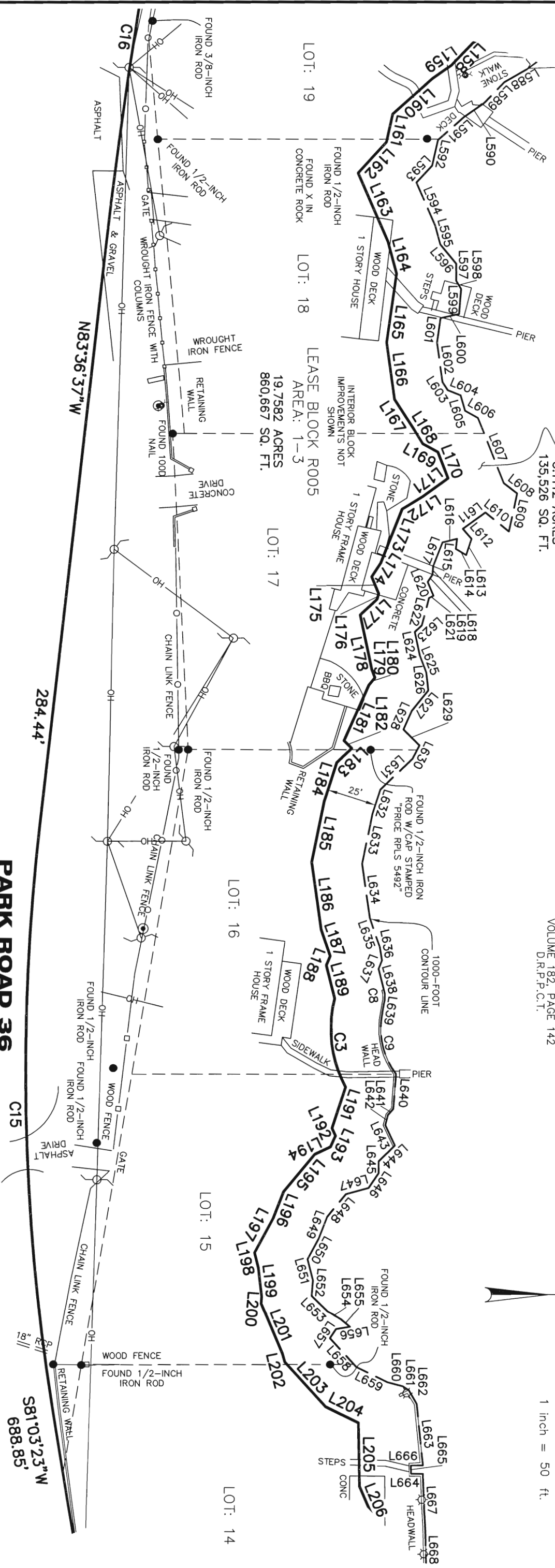
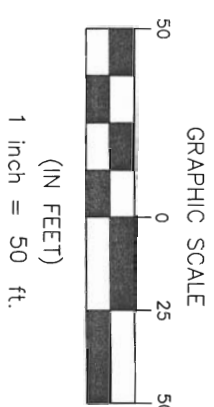
AECOM USA GROUP, INC.
1200 SUMMIT AVENUE, SUITE 600
FORT WORTH, TEXAS 76102
WWW.AECOM.COM
817.698.6770

NO PART OR PARTS OF THIS DRAWING MAY BE REPRODUCED OR TRANSMITTED IN ANY WAY OR FORM (ELECTRONIC, MECHANICAL, PHOTOCOPIING, OR OTHERWISE) WITHOUT THE EXPRESS WRITTEN PERMISSION OF AECOM.

**A.J. SMITH SURVEY
ABSTRACT 393**

POSSUM KINGDOM LAKE
THE BRAZOS RIVER CONSERVATION
AND RECLAMATION DISTRICT
TRACT 3-1-94
VOLUME 182, PAGE 142
D.R.P.C.T.

F.R.C. BUFFER AREA
3.1112 ACRES
135,526 SQ. FT.



CURVE TABLE					
CURVE	LENGTH	DELTA	RADIUS	CHORD BEARING	CHORD
C3	46.12'	42°01'27"	62.88'	N82°52'59"E	45.09'
C8	7.39'	33°52'23"	12.50'	S89°24'19"W	7.28'
C9	32.47'	49°07'17"	37.88'	N77°15'10"E	31.49'
C15	297.30'	15°20'00"	1110.92'	S88°43'23"W	296.41'
C16	226.37'	04°35'00"	2829.79'	N81°19'07"W	226.31'

PARK ROAD 36
70-FOOT WIDE RIGHT-OF-WAY
VOLUME 320, PAGE 581
D.R.P.C.T.
SEE NOTE 5

STANDARD LAND SURVEY
OF

22.8694 ACRES
SITUATED IN TRACT 3-1-94
AREA 1-3, LOTS 1 - 30
POSSUM KINGDOM LAKE
A.J. SMITH SURVEY, ABSTRACT 393
PALO PINTO COUNTY, TEXAS

AECOM
AECOM USA GROUP, INC.
1200 SUMMIT AVENUE, SUITE 600
FORT WORTH, TEXAS 76102
WWW.AECOM.COM
817.698.6770

- LEGEND**
- = LEASE CORNER MARKER "AS NOTED"
 - ⊕ = POST
 - OH = OVERHEAD LINES
 - ⊙ = POWER POLE
 - ⊖ = WATER METER
 - ⊕ = WATER VALVE
 - ⊖ = IRRIGATION VALVE
 - ⊕ = SIGN
 - ⊖ = LIGHT POLE

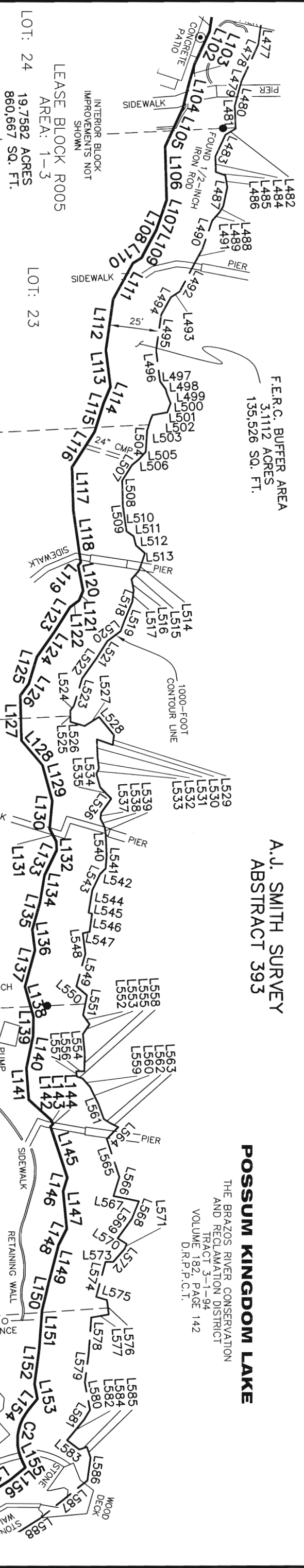
NO PART OR PARTS OF THIS DRAWING MAY BE REPRODUCED OR TRANSMITTED IN ANY WAY OR FORM (ELECTRONIC, MECHANICAL, PHOTOCOPYING, OR OTHERWISE) WITHOUT THE EXPRESS WRITTEN PERMISSION OF AECOM.

F.E.R.C. BUFFER AREA
3,111.2 ACRES
135,526 SQ. FT.

A.J. SMITH SURVEY
ABSTRACT 393

POSSUM KINGDOM LAKE

THE BRAZOS RIVER CONSERVATION
AND RECLAMATION DISTRICT
TRACT 3-1-94
VOLUME 182, PAGE 142
D.R.P.C.T.

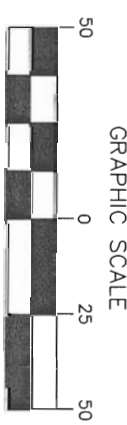
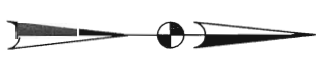


PARK ROAD 36
70-FOOT WIDE RIGHT-OF-WAY
VOLUME 320, PAGE 581
D.R.P.C.T.
SEE NOTE 5

LEGEND

- = LEASE CORNER MARKER "AS NOTED"
- = POST
- = OVERHEAD LINES
- ⊙ = POWER POLE
- ⊙ = WATER METER
- ⊙ = WATER VALVE
- ⊙ = IRRIGATION VALVE
- ⊙ = SIGN
- ⊙ = LIGHT POLE

STANDARD LAND SURVEY
OF
22.8694 ACRES
SITUATED IN TRACT 3-1-94
AREA 1-3, LOTS 1 - 30
POSSUM KINGDOM LAKE
A.J. SMITH SURVEY, ABSTRACT 393
PALO PINTO COUNTY, TEXAS



(IN FEET)
1 inch = 50 ft.

CURVE TABLE					
CURVE	LENGTH	DELTA	RADIUS	CHORD BEARING	CHORD
C2	28.39'	65.04°26"	25.00'	S80°49'19"E	26.89'
C16	226.37'	04°35'00"	2829.79'	N81°19'07"W	226.31'
C17	455.87'	22°07'05"	1180.92'	S89°54'51"W	453.05'

- NOTES:
- 1) BEARINGS AND COORDINATES SHOWN HEREON ARE BASED ON THE NORTH AMERICAN DATUM OF 1983, TEXAS COORDINATE SYSTEM, NORTH CENTRAL ZONE (4202).
 - 2) 1,000-FOOT CONTOUR ELEVATION OF POSSUM KINGDOM LAKE IS DETERMINED BASED ON MEASUREMENTS FROM THE TOP OF THE EXISTING SPILLWAY CREST GATES AT THE MORRIS SHEPPARD DAM BEING AT ELEVATION 1,000- FEET ABOVE MEAN SEA LEVEL AS NOTED IN FEDERAL POWER COMMISSION REPORT PROJECT NO. 1490 - TEXAS ON JUNE 2, 1938.
 - 3) SET = 5/8" IRON ROD W/CAP STAMPED "AECOM" SET; D.R.P.C.T. = DEED RECORDS, PALO PINTO COUNTY, TEXAS; P.R.P.C.T. = PLAT RECORDS, PALO PINTO COUNTY, TEXAS; F.E.R.C. = FEDERAL ENERGY REGULATORY COMMISSION; J.R.P.C.T. = JUDGEMENT RECORDS, PALO PINTO COUNTY, TEXAS; LFS = 5/8" IRON ROD W/CAP STAMPED "LINKFIELD RPLS 5087" FOUND
 - 4) METES AND BOUNDS DESCRIPTIONS TO ACCOMPANY THIS SURVEY.
 - 5) PARK ROAD 36 RIGHT-OF-WAY EASEMENT RECORDED IN VOLUME 320, PAGE 581 D.R.P.C.T. CALLS TO BE A STRIP OF LAND OF VARYING WIDTH, ACCORDING TO GREGG LANE, WITH TxDOT'S WEATHERFORD OFFICE, THE INTENDED WIDTH IS 35- FEET EITHER SIDE OF THE AS BUILT CENTERLINE FOR A TOTAL RIGHT-OF-WAY WIDTH OF 70- FEET.

REVISED: 05/21/10 SHEET 7 OF 10

Date: 11/19/09 Project No. 60102581.02

AECOM

AECOM USA GROUP, INC.
1200 SUMMIT AVENUE, SUITE 600
FORT WORTH, TEXAS 76102
WWW.AECOM.COM
817.698.6770

60052528
R005ByR.dwg

**A.J. SMITH SURVEY
ABSTRACT 393**

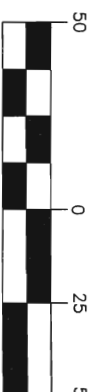
POSSUM KINGDOM LAKE

THE BRAZOS RIVER CONSERVATION
AND RECLAMATION DISTRICT
TRACT 3-1-94
VOLUME 182, PAGE 142
D.R.P.C.T.

CURVE TABLE					
CURVE	LENGTH	DELTA	RADIUS	CHORD BEARING	CHORD
C1	12.18'	27°55'03"	25.00'	S73°22'08"E	12.06'
C17	455.87'	22°07'05"	1180.92'	S89°54'51"W	453.05'



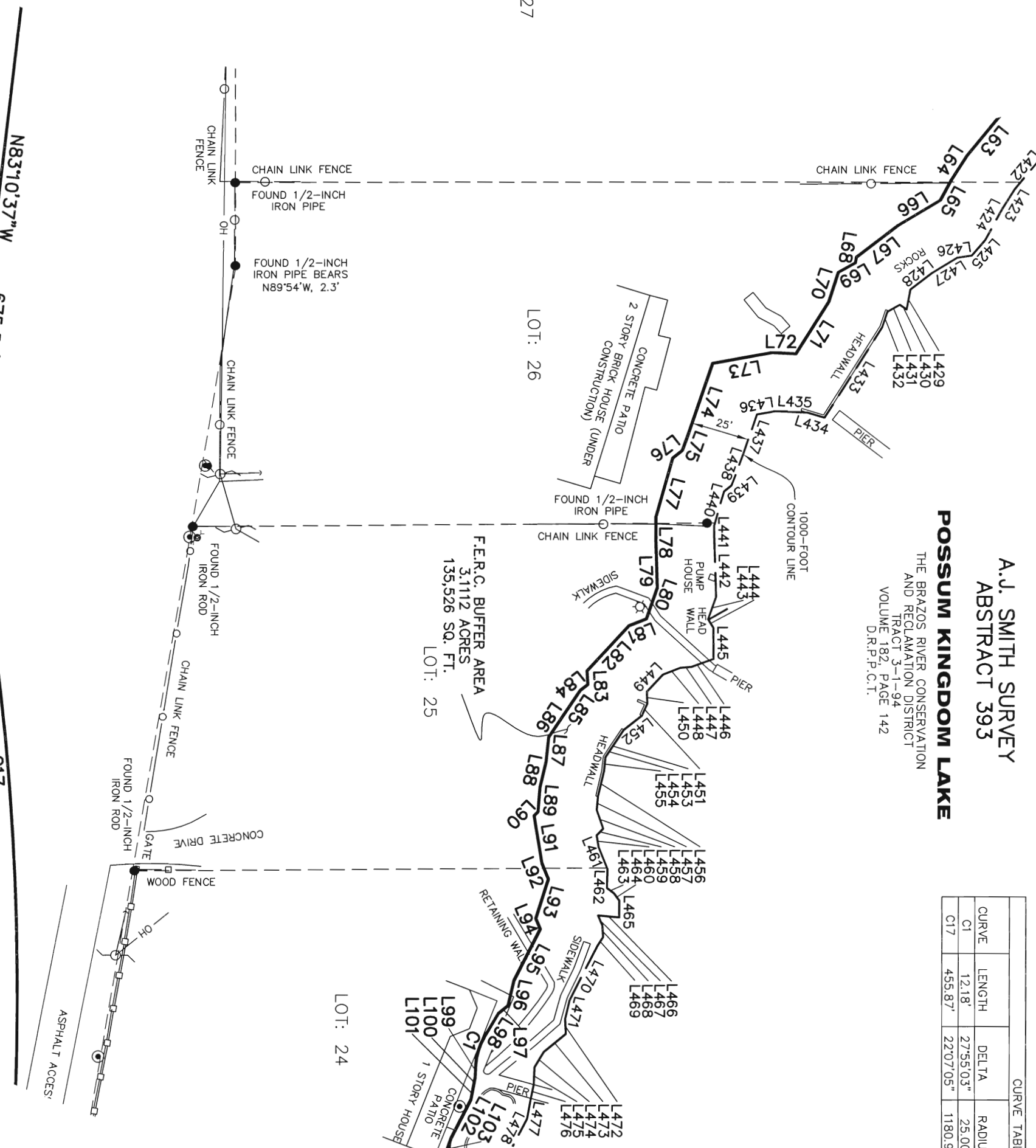
GRAPHIC SCALE



(IN FEET)
1 inch = 50 ft.

LEGEND

- = LEASE CORNER MARKER
"AS NOTED"
- ⊕ = POST
- OH = OVERHEAD LINES
- ⊙ = POWER POLE
- ⊖ = WATER METER
- ⊕ = WATER VALVE
- ⊖ = IRRIGATION VALVE
- ⊙ = SIGN
- ⊕ = LIGHT POLE



LOT: 27

LOT: 26

F.E.R.C. BUFFER AREA
3,112 ACRES
135,526 SQ. FT.
LOT: 25

LOT: 24

N83°10'37"W
675.52'

F.M. 2951

100-FOOT WIDE RIGHT-OF-WAY
VOLUME 330, PAGE 271
D.R.P.C.T.

PARK ROAD 36

70-FOOT WIDE RIGHT-OF-WAY
VOLUME 320, PAGE 581
D.R.P.C.T.
SEE NOTE 5

STANDARD LAND SURVEY

OF 22.8694 ACRES

SITUATED IN TRACT 3-1-94
AREA 1-3, LOTS 1 - 30
POSSUM KINGDOM LAKE
A.J. SMITH SURVEY, ABSTRACT 393
PALO PINTO COUNTY, TEXAS

AECOM

AECOM USA GROUP, INC.
1200 SUMMIT AVENUE, SUITE 600
FORT WORTH, TEXAS 76102
WWW.AECOM.COM
817.698.6770

REVISED: 05/21/10 SHEET 8 OF 10

Date: 11/19/09

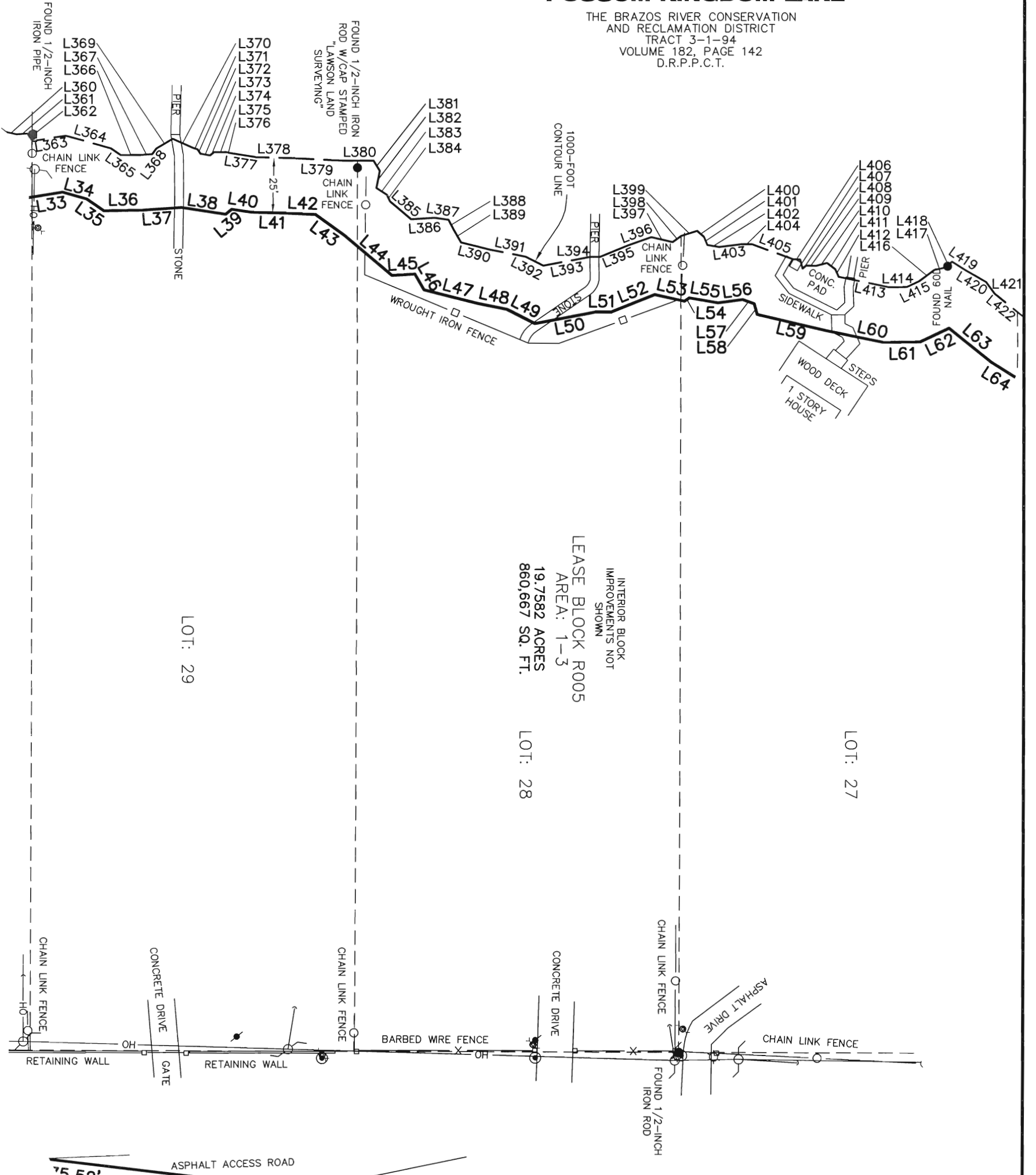
Project No. 60102581.02

60052528
R005By.dwg

A.J. SMITH SURVEY
ABSTRACT 393

POSSUM KINGDOM LAKE

THE BRAZOS RIVER CONSERVATION
AND RECLAMATION DISTRICT
TRACT 3-1-94
VOLUME 182, PAGE 142
D.R.P.P.C.T.



LEASE BLOCK R005
AREA: 1-3
19,7582 ACRES
860,667 SQ. FT.

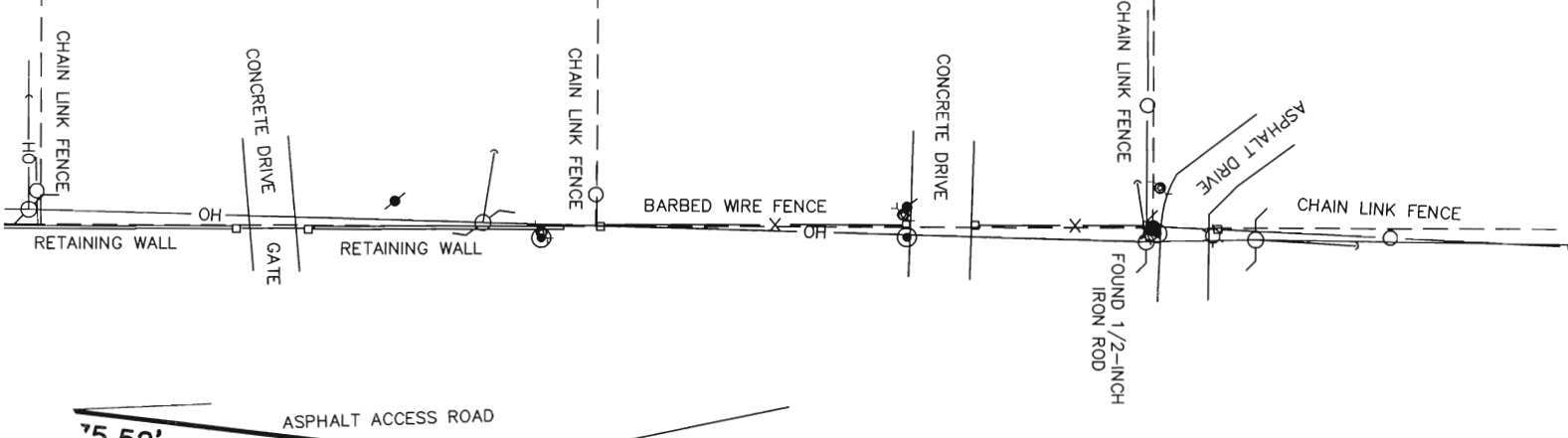
INTERIOR BLOCK
IMPROVEMENTS NOT
SHOWN

LOT: 30

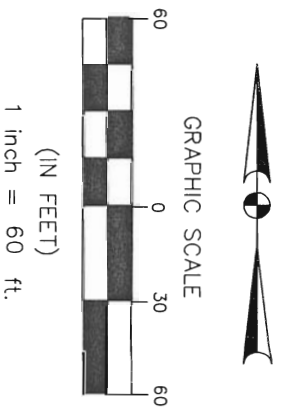
LOT: 29

LOT: 28

LOT: 27



F.M. 2951
100-FOOT WIDE RIGHT-OF-WAY
VOLUME 330, PAGE 271
D.R.P.P.C.T.



- LEGEND**
- = LEASE CORNER MARKER
 - = POST
 - H = OVERHEAD LINES
 - P = POWER POLE
 - M = WATER METER
 - V = WATER VALVE
 - I = IRRIGATION VALVE
 - S = SIGN
 - L = LIGHT POLE

STANDARD LAND SURVEY
OF
22.8694 ACRES
SITUATED IN TRACT 3-1-94
AREA 1-3, LOTS 1 - 30
POSSUM KINGDOM LAKE
A.J. SMITH SURVEY, ABSTRACT 393
PALO PINTO COUNTY, TEXAS

AECOM

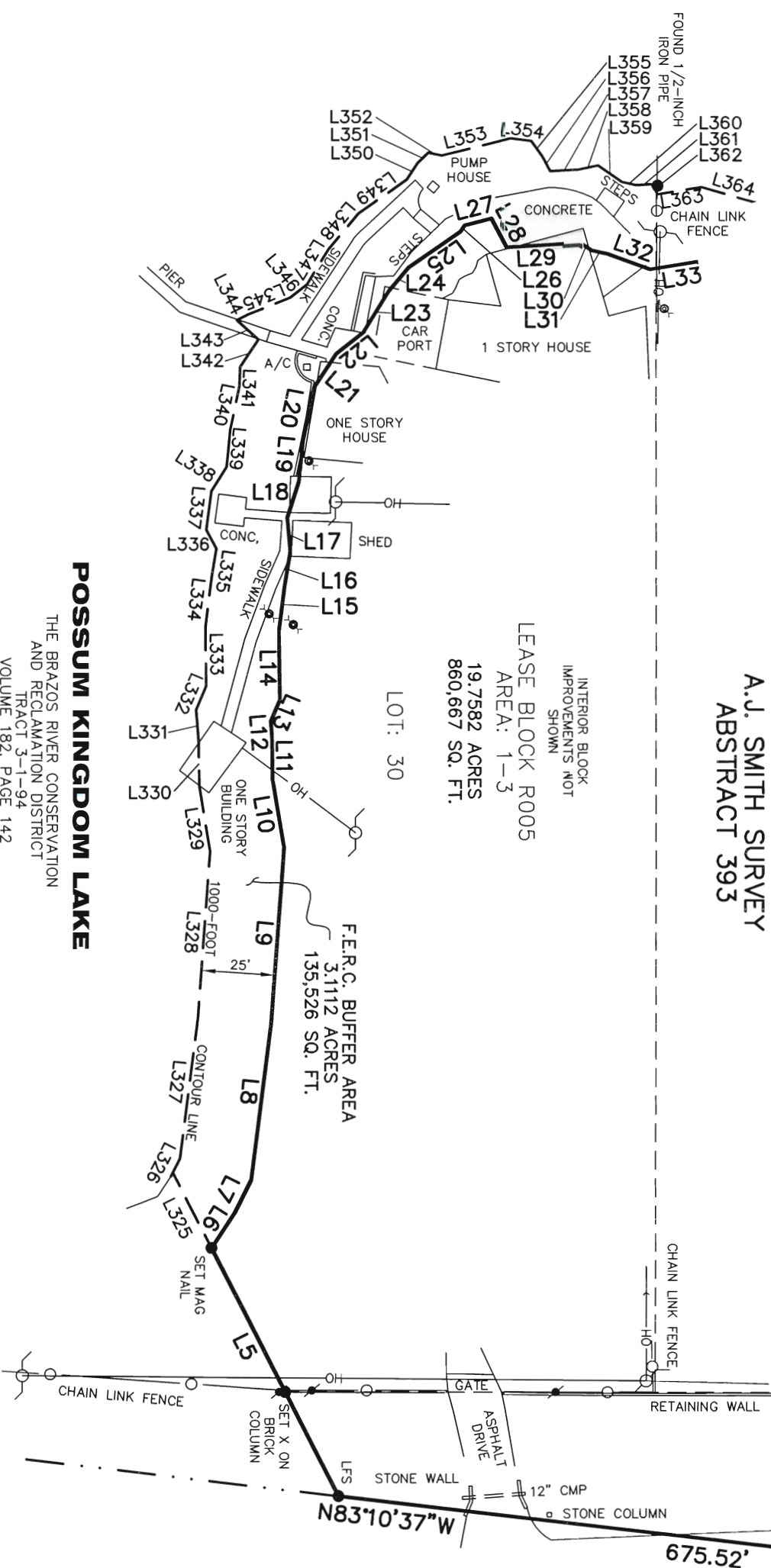
AECOM USA GROUP, INC.
1200 SUMMIT AVENUE, SUITE 600
FORT WORTH, TEXAS 76102
WWW.AECOM.COM
817.698.6770

REVISED: 05/21/10 SHEET 9 OF 10

Date: 11/19/09 Project No. 60102581.02 60052528 R005ByR.dwg

NO PART OF THIS DRAWING MAY BE REPRODUCED OR TRANSMITTED IN ANY WAY OR FORM (ELECTRONIC, MECHANICAL, PHOTOCOPYING, OR OTHERWISE) WITHOUT THE EXPRESS WRITTEN PERMISSION OF AECOM.

**A.J. SMITH SURVEY
ABSTRACT 393**

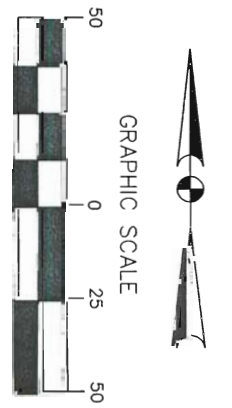


LEASE BLOCK R005
AREA: 1-3
19,7582 ACRES
860,667 SQ. FT.

LOT: 30

POSSUM KINGDOM LAKE
THE BRAZOS RIVER CONSERVATION
AND RECLAMATION DISTRICT
TRACT 3-1-94
VOLUME 182, PAGE 142
D.R.P.P.C.T.

F.M. 2951
100-FOOT WIDE RIGHT-OF-WAY
VOLUME 330, PAGE 271
D.R.P.P.C.T.



- LEGEND**
- = LEASE CORNER MARKER
 - "AS NOTED"
 - + = POST
 - = OVERHEAD LINES
 - = POWER POLE
 - ⊙ = WATER METER
 - ⊙ = WATER VALVE
 - ⊙ = IRRIGATION VALVE
 - ⊙ = SIGN
 - ⊙ = LIGHT POLE

SURVEYORS CERTIFICATE

TO: BRAZOS RIVER AUTHORITY, PATTERSON PK LAND PARTNERSHIP, LTD., AND HERITAGE TITLE COMPANY OF AUSTIN, INC.

I, JAMES T. MULLER, A REGISTERED PROFESSIONAL LAND SURVEYOR IN THE STATE OF TEXAS, REGISTRATION NUMBER 4522, HEREBY STATE THAT A SURVEY OF THE REAL PROPERTY DESCRIBED IN SEPARATE LEGAL DESCRIPTION AS NOTED HEREON, WAS ACTUALLY MADE UPON THE GROUND UNDER MY DIRECTION AND SUPERVISION, AND THAT TO THE BEST OF MY PROFESSIONAL KNOWLEDGE AND BELIEF, THE INFORMATION SHOWN HEREON IS CORRECT AS DETERMINED BY SAID SURVEY.

THIS SURVEY SUBSTANTIALLY COMPLIES WITH THE CURRENT TEXAS SOCIETY OF PROFESSIONAL SURVEYORS STANDARDS AND SPECIFICATIONS FOR A CATEGORY 1B, CONDITION II SURVEY.

[Handwritten Signature]

JAMES T. MULLER
REGISTERED PROFESSIONAL LAND SURVEYOR
TEXAS REGISTRATION NO. 4522



DATE: MAY 21, 2010

STANDARD LAND SURVEY
OF
22.8694 ACRES
SITUATED IN TRACT 3-1-94
AREA 1-3, LOTS 1 - 30
POSSUM KINGDOM LAKE
A.J. SMITH SURVEY, ABSTRACT 393
PALO PINTO COUNTY, TEXAS

AECOM
AECOM USA GROUP, INC.
1200 SUMMIT AVENUE, SUITE 600
FORT WORTH, TEXAS 76102
WWW.AECOM.COM
817.698.6770

REVISED: 05/21/10 SHEET 10 OF 10

Date: 11/19/09 Project No. 60102581.02 60052528 R005By.dwg

NO PART OR PARTS OF THIS DRAWING MAY BE REPRODUCED OR TRANSMITTED IN ANY WAY OR FORM (ELECTRONIC, MECHANICAL, PHOTOCOPIING, OR OTHERWISE) WITHOUT THE EXPRESS WRITTEN PERMISSION OF AECOM.