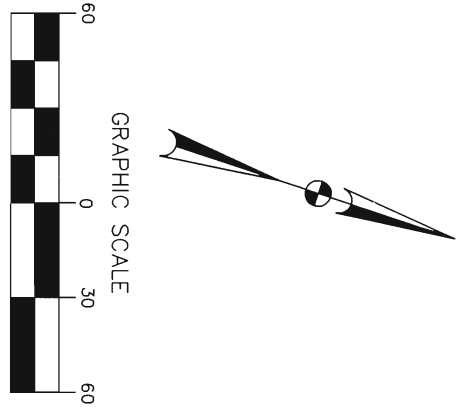


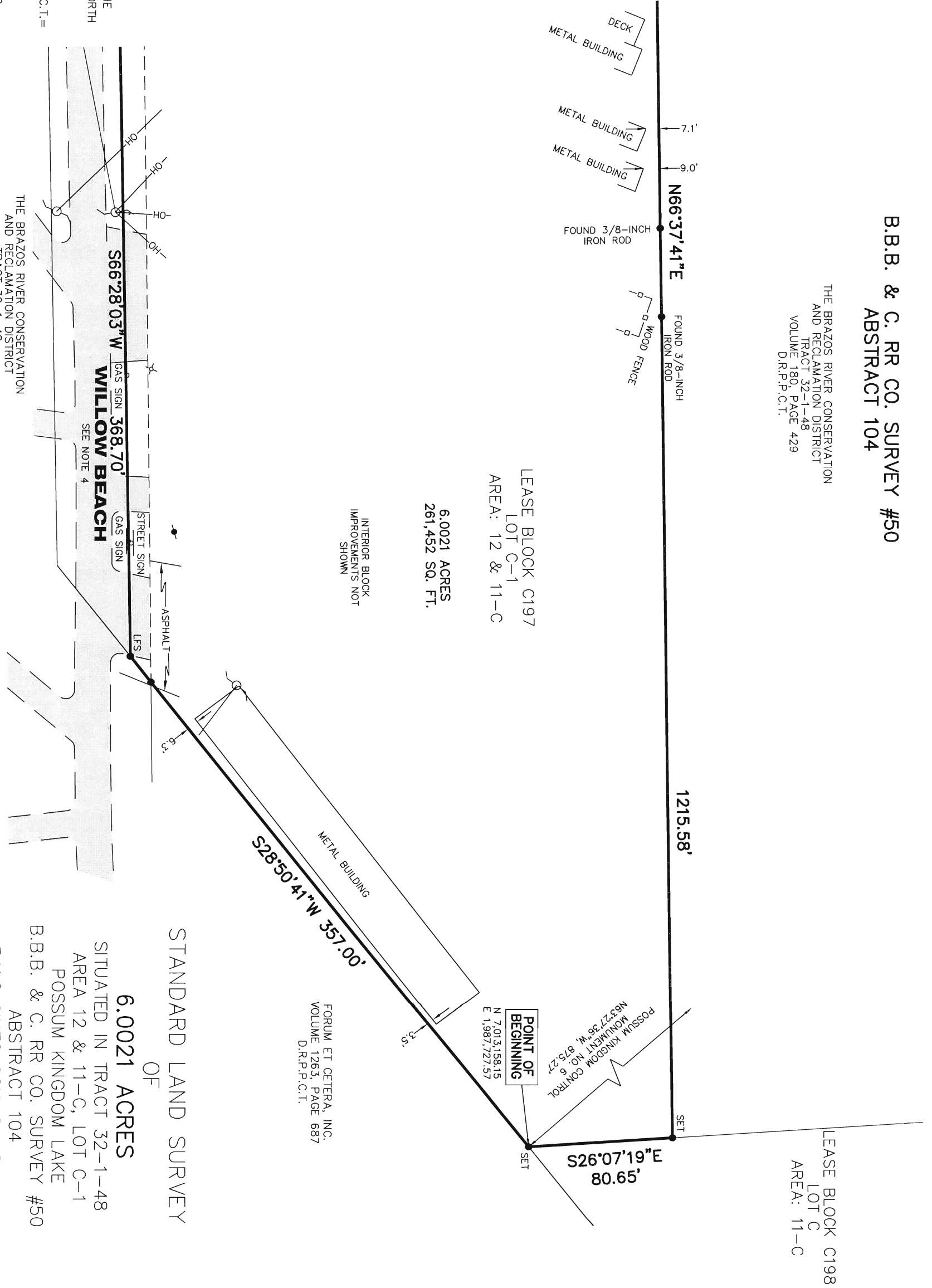
B.B.B. & C. RR CO. SURVEY #50
ABSTRACT 104

THE BRAZOS RIVER CONSERVATION
 AND RECLAMATION DISTRICT
 TRACT 32-1-48
 VOLUME 180, PAGE 429
 D.R.P.P.C.T.



- LEGEND**
- = LEASE CORNER MARKER "AS NOTED"
 - OH = OVERHEAD LINES
 - = POWER POLE
 - ⊕ = WATER VALVE
 - ⊞ = VALVE
 - = SIGN

- NOTES:**
- 1) BEARINGS AND COORDINATES SHOWN HEREON ARE BASED ON THE NORTH AMERICAN DATUM OF 1983, TEXAS COORDINATE SYSTEM, NORTH CENTRAL ZONE (4202).
 - 2) SET = 5/8" IRON ROD W/CAP STAMPED "AECOM" SET; D.R.P.P.C.T.= DEED RECORDS, PALO PINTO COUNTY, TEXAS; P.R.P.P.C.T.= PLAT RECORDS, PALO PINTO COUNTY, TEXAS; F.E.R.C.= FEDERAL ENERGY REGULATORY COMMISSION; J.R.P.P.C.T.= JUDGEMENT RECORDS, PALO PINTO COUNTY, TEXAS.
 - 3) METES AND BOUNDS DESCRIPTION TO ACCOMPANY THIS SURVEY.
 - 4) LOCATION OF ROAD PROVIDED BY LINK FIELD SERVICES, DATED OCTOBER 20 2009, AS SHOWN SHADED HEREON.



LEASE BLOCK C197
 LOT C-1
 AREA: 12 & 11-C

6.0021 ACRES
 261,452 SQ. FT.

INTERIOR BLOCK
 IMPROVEMENTS NOT
 SHOWN

THE BRAZOS RIVER CONSERVATION
 AND RECLAMATION DISTRICT
 TRACT 32-1-48
 VOLUME 180, PAGE 429
 D.R.P.P.C.T.

STANDARD LAND SURVEY
 OF
6.0021 ACRES
 SITUATED IN TRACT 32-1-48
 AREA 12 & 11-C, LOT C-1
 POSSUM KINGDOM LAKE
 B.B.B. & C. RR CO. SURVEY #50
 ABSTRACT 104
 PALO PINTO COUNTY, TEXAS

FORUM ET CETERA, INC.
 VOLUME 1263, PAGE 687
 D.R.P.P.C.T.

AECOM	Date: 11/05/09	Project No. 60102581.02	60052528
	AECOM USA GROUP, INC. 1200 SUMMIT AVENUE, SUITE 600 FORT WORTH, TEXAS 76102 WWW.AECOM.COM 817.698.6770		C197BYR.dwg

NO PART OF THIS DRAWING MAY BE REPRODUCED OR TRANSMITTED IN ANY WAY OR FORM (ELECTRONIC, MECHANICAL, PHOTOCOPYING, OR OTHERWISE) WITHOUT THE EXPRESS WRITTEN PERMISSION OF AECOM.

**B.B.B. & C. RR CO. SURVEY #50
ABSTRACT 104**

THE BRAZOS RIVER CONSERVATION
AND RECLAMATION DISTRICT
TRACT 32-1-48
VOLUME 180, PAGE 429
D.R.P.C.T.

1215.58'

N66°37'41"E

FOUND 1/2-INCH
IRON PIPE

92.24'
N14°05'41"E

FOUND 80D NAIL

OH

OH

OH

OH

OH

OH

OH

OH

OH

OH

OH

OH

OH

OH

OH

OH

FOUND 1/2-INCH
IRON PIPE

OH

OH

OH

OH

OH

OH

OH

OH

OH

OH

OH

OH

OH

OH

OH

OH

LEASE BLOCK R168
LOT C
AREA: 12

LEASE BLOCK R168
LOT D
AREA: 12

LEASE BLOCK R168
LOT E
AREA: 12

LEASE BLOCK C197
LOT C-1
AREA: 12 & 11-C

6.0021 ACRES
261,452 SQ. FT.

INTERIOR BLOCK
IMPROVEMENTS NOT
SHOWN

261.64'

N65°54'25"W

142.69'

S61°54'25"W

112.00'

N65°52'29"W

S26°25'26"W

N65°46'19"W

58.16'

OVERHANG
POLE BARN
WITH TRAILER'S
UNDERNEATH

DECK
METAL BUILDING

METAL
BUILDING

OH

OH

OH

OH

OH

OH

OH

OH

OH

OH

OH

OH

OH

OH

OH

OH

OH

OH

OH

OH

OH

OH

OH

OH

OH

OH

OH

OH

OH

OH

OH

OH

OH

OH

OH

OH

OH

OH

OH

OH

OH

OH

OH

OH

OH

OH

OH

OH

OH

OH

OH

OH

OH

OH

OH

OH

OH

OH

OH

OH

OH

OH

OH

OH

OH

OH

OH

OH

OH

OH

OH

OH

OH

OH

OH

OH

OH

OH

OH

OH

OH

OH

OH

OH

OH

OH

OH

OH

OH

OH

OH

OH

OH

OH

OH

OH

OH

OH

OH

OH

OH

OH

OH

OH

OH

OH

OH

OH

OH

OH

OH

OH

OH

OH

OH

OH

OH

OH

OH

OH

OH

OH

OH

OH

OH

OH

OH

OH

OH

OH

OH

OH

OH

OH

OH

OH

OH

OH

OH

OH

OH

OH

OH

OH

OH

OH

OH

OH

OH

OH

OH

OH

OH

OH

OH

OH

OH

OH

OH

OH

OH

OH

OH

OH

OH

OH

OH

OH

OH

OH

OH

OH

OH

OH

OH

OH

OH

OH

OH

OH

OH

OH

OH

OH

OH

OH

OH

OH

OH

OH

OH

OH

OH

OH

OH

OH

OH

OH

OH

OH

OH

OH

OH

OH

OH

OH

OH

OH

OH

OH

OH

OH

OH

OH

OH

OH

OH

OH

OH

OH

OH

OH

OH

OH

OH

OH

OH

OH

OH

OH

OH

OH

OH

OH

OH

OH

OH

OH

OH

OH

OH

OH

OH

OH

OH

OH

OH

OH

OH

OH

OH

OH

OH

OH

OH

OH

OH

OH

OH